

Dialogue Flybook V33i Series

User's Guide

Dialogue Technology Corporation.

Copyright © 2005 - 2006 . All Rights Reserved.

Revision: 1.0 Oct. 2005

Service website: <http://www.dialogue.com.tw>

Announcement

Dialogue Technology Corporation is a registered trademark.

Flybook is a trademark of Dialogue Technology Corporation.

All trade names referred to in this document are the service mark, trademark, or registered trademark of the respective manufactures or companies.

Disclaimer

Specifications and information in this document are subject to change without notice. Please visit our web site or contact us to get the latest information.

With regards to the accuracy of this document, no warranty is made or implied.

Copyright

No part of this document may be copied or reproduced in any form or by any means without the express written permission of Dialogue Technology Corporation.

About this user's guide

This user's guide includes essential information for the users who need to use and manage the computer. The content covers all V33i series of Flybook computer. Please refer to the information pertaining to your model and disregard unrelated material.

Windows® XP Home Edition or Professional Edition is the default operating system of the computer. All descriptions in this guide imply any of these two editions.

3 in-text logos are used in this document. They will help you to have more understanding on reading this user's guide and using the computer.



Caution or warning: Behavior or things that are forbidden or not allowed, or need your attention.



Tips: Hints or prompts to remind you of something.



Notes: Further descriptions of something.

Table of Contents

Dialogue Flybook V33i Series	i
Announcement.....	ii
Disclaimer.....	ii
Copyright.....	ii
About this user's guide.....	ii
Table of Contents	iv
Before you start	1
Important cautions.....	1
Warranty.....	1
How to get help.....	1
Guides.....	1
Online-helps.....	1
Service websites.....	2
Local service centers.....	2
How to request service.....	2
Care tips.....	3
Taking care of your AC adapter and power cord.....	3
Taking care of your computer.....	3
Taking care of your battery pack.....	4
A glance at your Flybook computer	5
Front view.....	5
Rear view.....	6
Left view.....	7
Right view.....	7
Bottom view.....	8
Features	10
Processor.....	10
Memory.....	10
Storage.....	10
Power.....	10
Display.....	10
Audio.....	10
Input devices.....	11
I/O ports.....	11
Connectivity.....	11
Convertible lid and working mode	13
Turning to tablet mode.....	13
Turning to clamshell mode.....	14
LED indicators	15
Prompt-to-play user's interface	16
Keyboard.....	16
Windows keys.....	16
Lock keys.....	17
Hot keys.....	18
Pointing device.....	19
Track-point.....	19
Pan button.....	20
Touch-panel.....	21
Calibrating touch-panel.....	22
Using touch-panel.....	22
Touch mode.....	22
Changing touch mode.....	22
Touch operation in general touch mode.....	23
Touch operation in Mouse right-click button mode.....	23
Display and audio.....	23
Outputting display to a VGA display device.....	24
Outputting display to a video display device.....	24
Outputting sound or voice to an earphone or external speaker.....	24
Inputting sound or voice from an external microphone.....	24
Connection through options	26
High-speed link.....	26
USB link.....	26
FireWire (IEEE 1394) link.....	26
Network and Internet connection.....	27
Local area network connection.....	27
Wireless LAN connection.....	28
Modem dial-up connection.....	29
Wireless WAN connection.....	29
Bluetooth wireless connection.....	30
Faxing.....	31
PC card connection.....	32

Power management	33
System utilities	34
Flybook Control Center	34
Doing what the hot keys do	34
Changing display orientation	35
PenMount utility	36
Calibrating the touch-panel	36
Checking the positioning of touch-panel	37
Flybook System Recovery utility	38
BIOS setup utility	38
Securing your computer	39
Securing your computer against unauthorized access	39
BIOS password	39
Operating system passwords	39
Securing your computer against damage	39
Making frequent backups	39
Attaching a strap	40
Restoring your system	41
From the hidden partition of hard disk	41
From Recovery CDs	41
Calibrating the battery	43
Changing parts	44
Changing system memory	44
Changing hard disk	45
Removing keyboard	45
Taking hard disk set out of the computer	46
Disassembling and reassembling hard disk set	47
Installing hard disk set back into the computer	47
Installing keyboard back to the computer	48
Troubleshooting	50
Basic identifying procedure for your problems	50
Solutions for the problems most likely to encounter	50
The computer does not start or boot up	50
Hard drive or external boot-up device is inaccessible	50
The screen is blank or the display is abnormal	50
No audio output	51
The keyboard, track-point or Mouse does not work properly	51
The PC card does not work properly	51
The Modem does not receive or transmit properly	52
The wireless WAN module does not work properly	52
Can not connect to a wireless LAN	52
The touch-panel does not work properly	52
The battery can not be charged or loses power quickly	52

Before you start

Important cautions

- The computer has been designed to allow users to change its system memory and hard disk drive. If you need to change any of them, thoroughly read “Changing parts” section on page 44 in advance and do as the section say. The standard warranty does not cover any damage due to the improper operation.
- Wireless communication is prohibited in the aircraft. Make sure all modules are turned off while using the computer during your flight.
- Wireless LAN and wireless WAN modules can not be functioned in a computer at the same time.
- Risk of explosion if battery is replaced by an incorrect type.
- Dispose of the used batteries according to the instructions.

Warranty

The warranties provided by Dialogue Technology Corporation are varied from countries to countries. Please see the statements in your warranty card.

How to get help

The computer includes the following resources to help you.

Guides

In addition to this user’s guide, you can find the following in your computer’s package.

- **Flybook Quick Start Guide:** Helps you ready your computer for use quickly. Read it first of all.
- **Windows XP start here:** Guides you to start, use and troubleshoot your computer’s Windows XP operating system.
- **Guides of built-in utilities:** Some built-in utilities have guides to help you start, use and troubleshoot them.

Online-helps

Online-helps always include complete and plentiful help information. Your computer, Windows XP operating system and built-in utilities have their own online-helps. Visit them anytime to get help when the computer is running.

- **Flybook Online Help:** Helps you to use and troubleshoot your computer.



When your computer is ready for use and running, click [Flybook Control Center] icon in taskbar notification area. A pop-up menu appears. Click [Flybook Help] in the pop-up menu to open Flybook Online Help.



- **Help and Support Center of Windows XP:** Helps you to use and troubleshoot Windows XP operating system and your computer.



When the computer is ready for use and running, click [Start] in taskbar and then click [Help and Support] to open Help and Support Center of Window XP.

- **Online-helps of built-in utilities:** Helps you to use and troubleshoot built-in utilities. In general, you can find help entries in the menu bar of utility. Click the entries to open help windows and view help information.

Service websites

The service websites always keep the latest help information. Directly visit the sites to retrieve help information or link them from help entries or online-helps. The service website of Flybook is <http://www.dialogue.com.tw>.

Local service centers

Please retrieve Flybook's service website to get contact information of worldwide service centers; for Windows XP or others, get information from their warranty cards, help documents or service websites.

How to request service

If the computer can not function properly, please contact service centers or authorized resellers to request service.

Basically, you must show information or evidence as stated on the warranty card to the service center when you request service. Also, provide the following information:

- Summary of your problems.
- What steps you have taken to try and resolve the problems.
- Sufficient, free, and safe access rights to your computer to fulfill its obligations.



- Remember to backup or secure your personal data before delivering the computer to a service center. There is no guarantee that your data can be safely reserved during the service and maintenance period.
- Service procedures are varied from countries to countries or regions to regions. Please see your warranty card to get further information about service in your area.

Care tips

Knowing basic care tips can avoid your computer from improper use and accidental damage. Read following instructions carefully:

Taking care of your AC adapter and power cord

- Read through the specifications and cautions on the AC adapter.
- Make sure the power source is within safe operating range and the power is stable before connecting the AC adapter to the source.
- Do not connect the AC adapter to any other devices.
- Do not put heavy objects on top of the AC adapter or power cord.
- Do not put the AC adapter or power cord in the place where people can step on them.
- When unplugging the power cord, do not pull power cord itself; pull plug.
- Disconnect the AC adapter from the power source when it is not in use.

Taking care of your computer

- Note all cautions and warnings on the computer.
- Do not expose the computer to temperatures above 50°C or below 0°C.
- Keep the computer away from direct sunlight or heat.
- Do not expose the computer to rain or moisture.
- Do not spill water or any liquid on the computer.
- Do not place the computer near magnetic fields.
- Avoid heavy shock or vibration to the computer.
- Do not expose the computer to dusty or dirty environment.
- Do not put any objects on the top of the computer.
- Do not press on the back of the display.
- Do not place the computer on uneven surfaces.
- Do not turn the hinge in the wrong direction or bend the lid over their allowed

Before you start

operational positions.

- Make sure the convertible hinge is at exact close position before closing the lid.
- Do not slam the lid when closing it.
- Only the stylus pen comes along with the computer can be used to operate the touch-panel.
- Do not obstruct the ventilation slots with anything. If air convection is blocked, the computer could be damaged.
- Do not use any other AC adapters except those specified for the computer.
- Make sure the computer is turned off and the AC adapter is unplugged before changing the system parts.

Taking care of your battery pack

- Read cautions on the battery.
- Keep the battery away from direct sunlight or heat. The best temperature to store the battery when not in use is between 0°C and 30°C.
- Do not expose the battery to rain or moisture.
- Do not spill water or any liquid on the battery.
- Avoid heavy shock to the battery.
- Do not put any heavy objects on the battery.
- Keep the battery away from children.
- Periodically calibrate the battery.

A glance at your Flybook computer

Front view

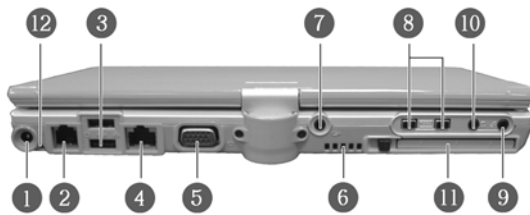


#	Item	Note
1	Battery bay	Houses a battery pack.
2	Keyboard	Inputs data and controls the computer.
3	Track-point	Moves Mouse cursor or pans display.
4	Mouse left-click and right-click buttons (x2)	Functions like left-click button and right-click button of Mouse.
5	Pan button	Toggles on/off the panning function.
6	Speakers (x2)	Plays sound or voice.
7	Convertible hinge	Supports lid and enables you to turn the computer to tablet mode or clamshell mode.
8	Magnetic latch (hidden inside)	Latches lid in both tablet mode and clamshell mode.

A glance at your Flybook computer

#	Item	Note
9	Magnetic lid switch (hidden inside)	Automatically turns off the display screen while the lid is closed in clamshell mode.
10	LCD display screen and touch-panel	The computer's display screen and touch input device.
11	Microphone	Inputs sound and voice.
12	LED indicators	Shows lock status of keyboard's caps lock and number lock functions, and running status of key parts and subsystems.

Rear view



#	Item	Note
1	Power jack	Connects to an AC adapter.
2	Fax/data modem jack (RJ-11)	Connects to a telephone line.
3	USB port (x2)	Connects to USB devices.
4	Ethernet port (RJ-45)	Connects to an Ethernet cable.
5	D-sub15 VGA display port	Connects to a VGA display device.
6	Ventilation opening	Enables hot air out to keep system cool.

A glance at your Flybook computer

#	Item	Note
7	Video output port	Connects to a video display device. Supports NTSC/PAL format.
8	FireWire(IEEE 1394) port (x2)	Connects to devices that have FireWire interfaces.
9	Microphone-in port	Connects to an external microphone.
10	Earphone/line-out port	Connects to an earphone or external speaker.
11	PC card slot	Accepts type-I or type-II CardBus PC cards.
12	Strap hole	Attaches a carrying strap.

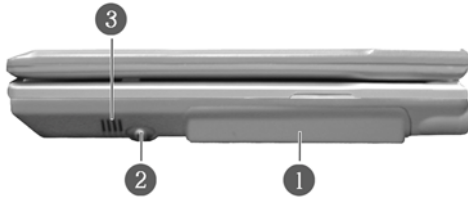
Left view



#	Item	Note
1	Power button	Turns on/off the computer.
2	SIM card slot	Accepts a SIM card for wireless WAN communication.

Right view

A glance at your Flybook computer



#	Item	Note
1	Hard disk bay	Houses a hard disk.
2	Stylus pen compartment	Houses a stylus pen.
3	Ventilation opening	Enables cool air in to keep system cool.

Bottom view



#	Item	Note
1	System memory compartment	Houses system memory.

#	Item	Note
2	Reset switch button	Resets main board to its factory default value (use a paper clip or similar object to press the recessed reset switch).
3	Battery latches (x2)	Secures battery pack.
4	Ventilation opening	Enables cool air in to keep system cool.

Features

Processor

- Intel Pentium M / Celeron M; the frequency of processor applied on FlyBook V33i series may vary and the user is recommended to check it by looking at the label on the bottom of unit.

Memory

- System Memory: one SO-DIMM DDR, 256MB/512MB/1GB
- Video RAM: 64MB shared memory
- BIOS ROM: 512 KB flash ROM with boot block

Storage

- Hard disk: 30/40/60/80/100 GB, 2.5-inch, ATA/IDE
- Memory card: CardBus PC card
- Optional CD/DVD-ROM and other storage devices: External connections via USB/FireWire(IEEE 1394) ports

Power

- High-performance power management system with ACPI (Advanced Configuration Power Interface) support
- DC-in power supply (through DC-in power jack); input rating: 15 -19Vdc, 2.64 3.34A, 50W; maximum operating temperature (ambient): 40 degree C
- AC adapter model no.: ADP-50HH Rev. A; input rating: 100-240Vac, 50-60Hz, 1.5A; output rating: 19Vdc, 2.64A, Class II, marked LPS
- Battery: 3 cell 18650 Li-Ion rechargeable battery pack; charging: direct DC charging

Display

- Screen: 8.9-inch LTPS wide-XVGA TFT LCD; displays true color at resolution 1024*600
- 3D display capability
- Display output support (to a LCD/CRT monitor or TV)

Audio

- Integrated RealTek ALC202 audio, compliant with AC97

- Built-in stereo speakers and microphone
- Audio input (from an external microphone) and output (to an earphone or speaker) support

Input devices

- 80-key (or 86-key in some countries) mini-size Windows enhanced keyboard with hot keys support
- One track-point, two sets of Mouse click buttons (left-click and right-click)
- Display panning support (pan button)
- Built-in pressure-sensitive, palm-rejected touch-panel

I/O ports

- D-sub15 VGA output port
- Video output port
- Earphone/line-out (stereo) port
- Microphone-in port
- Two Universal Serial Bus (USB) 2.0 ports
- Two FireWire(IEEE 1394) ports
- Ethernet port(RJ-45, Giga LAN)
- Fax/data modem port (RJ-11)
- SIM card slot (for wireless WAN communication)
- Type II CardBus PC card slot

Connectivity

- USB high-speed link (Through USB 2.0 controller and two ports)
- FireWire high-speed link (Through FireWire (IEEE 1394) controller and two ports)
- LAN connection (Through 10/100/1000 Mbps-integrated Ethernet controller and Ethernet port)
- Modem dial-up connection (Through built-in V.92 fax/data modem module and fax/data modem port)
- Wireless LAN connection (By using built-in 802.11 b/g wireless LAN module)
- Bluetooth wireless connection (By using built-in Bluetooth 2.0 module (optional))
- Wireless WAN dial-up connection (By using built-in wireless WAN module (optional))

Features

- Voice communication (By using built-in wireless WAN module (optional))
- Fax (Through built-in V.92 fax/data modem and fax/data modem port)



Wireless WAN module is also called 3G module. It could be an EDGE, CDMA2000, WCDMA or other module. Only the select model could have the module installed inside. What the computer will have depends on your option and what the manufacture may supply.

Convertible lid and working mode

The computer's lid can be turned 180 degrees clockwise and counterclockwise. This smart design makes the computer capable of working in 2 modes, clamshell mode and tablet mode. In clamshell mode, the lid is not turned and the computer is used just like a notebook computer; when the lid is turned 180 degrees clockwise and latched, the computer is in tablet mode. It is used just like a tablet PC.



Turning to tablet mode

When the computer is in clamshell mode:

- 1 Open the lid to an angle between 85 to 95 degrees.



- 2 Turn the lid 180 degrees clockwise until it clicks into place and carefully press the lid down.



Turning to clamshell mode

When the computer is in tablet mode:









- 3** Lift the lid up at an angle between 85 to 95 degrees.
- 4** Turn the lid 180 degrees counterclockwise until it clicks into place.



- Do not bend lid beyond its allowed positions.
- Do not turn lid if it has not been opened at the right angle (between 85° to 95°).
- Do not close lid when it has not been clicked into place.
- Do not slam lid when closing it.

LED indicators

The computer has several LED indicators that show system status.

#	Item	Description
1	 Power	Steady On: The computer is powered on. Flashing: The system is in Suspend to RAM mode. Off: The system is in Suspend to Disk mode or turned off.
2	 Battery	Steady On: The battery (1), supplies its power to computer. (2), is fully charged when DC-in power is supplied. Off: The computer (1), is powered off. (2), can not find the battery when DC-in power is supplied. Slow Flash: The battery is charging. Fast Double Flash: The power of battery is low. Fast Flash: The battery does not function.
3	 Hard drive	Lights when hard disk is being accessed.
4	 Wireless LAN module	Lights when wireless LAN module is turned on.
5	 wireless WAN module	Lights when wireless WAN module is turned on.
6	 Bluetooth module	Lights when Bluetooth module is turned on.
7	 Caps Lock	Lights when keyboard is set to type in all capital letters.
8	 Num Lock	Lights when number lock mode is on.

Prompt-to-play user's interface

Multiple input devices are available in your computer. All make the computer easy for use. Combined with 2 working modes, the computer can be used in almost all operational conditions, no matter what posture you are in—sitting, standing or walking.

Keyboard

The computer's mini-size keyboard is a multi-functional keyboard which complies with the definition of Windows enhanced keyboard and has 12 hot keys (combination keys) to access most of the computer's controls.




Windows keys

The keyboard has two keys to perform Windows-specific functions.



Key	Description
	Windows logo key. Opens the Start menu. Some keys combined with this key can perform Windows shortcuts: <ul style="list-style-type: none"> • <F1> : Opens "Help and Support Center" • <Tab>: Activates next task button on taskbar.



Key	Description
+ < E >	: Explores "My Computer".
+ < F >	: Explores "Search Results".
+ < M >	: Minimizes all tasks. Only shows buttons on taskbar.
+ < Shift > + < M >	: Undoes minimizing all tasks.
+ < R >	: Opens "Run" dialogue box.
	Application key. Functions as Mouse right-click button.

Lock keys

The keyboard has 3 lock functions. Press the dedicated key or key combinations to toggle on/off the functions.



Key	Description
CapsLock	When caps-lock LED indicator lights on, the caps-lock is on. All alphabetic characters entered are in uppercase.
Fn + NumLK	When number-lock LED indicator lights on, the number-lock is on. The embedded numeric keypad is functioning.



Prompt-to-play user's interface

Key	Description
Fn + ScrLK	When scroll-lock is on, pressing up or down arrow keys will scroll display one line up or down respectively.

Hot keys



Key	Description
Fn + Esc	Turns on/off the backlight of display screen
Fn + ~	Repeatedly presses the keys to output display to: <ul style="list-style-type: none"> ▪ An connected VGA display device only ▪ An connected video display device only ▪ The built-in LCD display screen and the connected display device both ▪ The built-in LCD display screen and the connected video display device both. ▪ The built-in LCD display screen only
Fn + F1	Decreases display brightness.
Fn + F2	Increases display brightness.
Fn + F3	Enters into Suspend to RAM mode (depends on the settings in Power Options).
Fn + F4	Enters into Suspend to Disk mode (depends on the settings in Power Options).
Fn + F5	Decreases the volume of audio system.

Key	Description
Fn + F6	Increases the volume of audio system.
Fn + F7	Opens/closes audio system.
Fn + F8	Turns on/off wireless LAN module.
Fn + F9	Turns on/off wireless WAN module.
Fn + F10	Turns on/off Bluetooth module.
Double pressed Fn	Wakes up system from suspend mode.



The functions that hot keys can perform can also use icons in Flybook Control Center (See page 34) to perform them.



The computer supports **OSD** (On-Screen Display) to display its settings on the screen. For example, when Fn + F2 are pressed, the screen displays "Brightness Up", and the brightness of the display screen is increased to a set value.



Pointing device

The track-point, along with two sets of Mouse click buttons and pan button, functions like a 2 button Mouse with pan. It is a substitute for Mouse in your operation.



Track-point

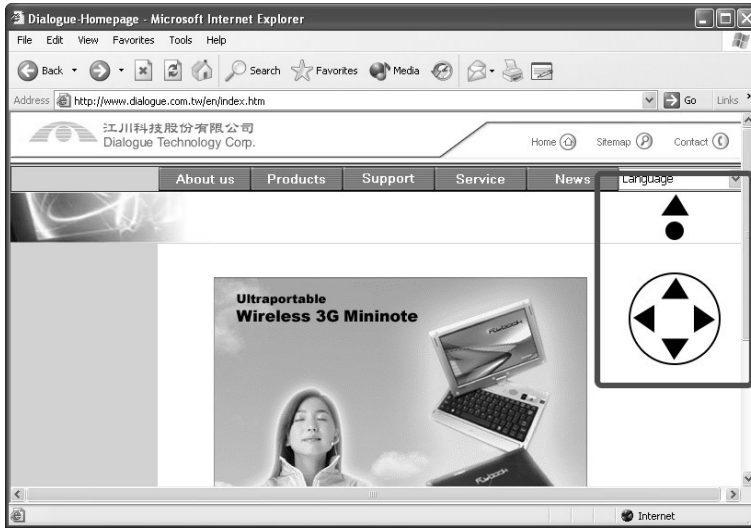
The track-point is a capacitive pointing device which moves Mouse cursor. When you put force on the top of the track-point with your fingertip, the Mouse cursor will move. The direction and speed of cursor movement depends on the direction you push and the amount of force you use. Using more force causes the cursor to move faster.

Besides, the track-point supports:

- Double-pressing operation: Functions like double-click operation of Mouse left-click button.
- Panning operation: See "Pan button" section below.

**Pan button**

Panning function can pan the display. It will help you to view documents quickly and easily. The pan button is a toggle button which toggles on/off the panning function. When a document shown on the display screen gets Mouse focus and the panning function is on, push track-point forward and backward will scroll the document content upward and downward respectively; and push the track-point left and right will scroll the document content left and right respectively.



Touch-panel

Touch-panel is a pen-based input and pointing device, which is mainly used in tablet mode to operate your computer. The touch-panel embedded in your computer is a pressure-sensitive but palm-rejected type. You can use a stylus pen to point, draw or write on it, but it is not easy to react on the press of your palm.



To clean touch-panel, use any non-ammonia glass cleaner. Spray some cleaner on a cloth or towel and then wipe the surface of panel softly.

Calibrating touch-panel

Calibration is a procedure to adjust the cursor position on the screen relative to the pen tip position.

You need to calibrate your touch-panel when:

- The touch-panel is used for the first time.
- The cursor position does not correctly match the pen tip position.
- The system image is restored again.

To calibrate your touch-panel, see "PenMount utility" section on page 36.

Using touch-panel

Touch mode

The touch-panel can be used in 2 touch modes, general touch mode and Mouse right-click button mode. You must change touch mode to meet different operational requirement. When in general touch mode, the stylus pen acts as a Mouse with left-click button and move; when in Mouse right-click button mode, the stylus pen acts as a Mouse right-click button.

Changing touch mode

To change touch mode:

- 5 Touch [PenMount] icon in taskbar notification area. A pop-up menu appears.



- 6 Select [Right Button] in the pop-up menu to open Touch Mode Selection window.

- 7 Click on the Mouse icon in Touch Mode Selection window to switch the touch mode.



When Touch Mode Selection window is closed, the touch mode will be automatically switched to general touch mode.

Touch operation in general touch mode

The following is a brief introduction:

- Pointing touch panel will move Mouse cursor to the touched point.
- When the pointed place is an entry, the entry will get keyboard cursor focus.
- When an icon or item is pointed, it will get Mouse focus.
- Single or double pointing a task icon or item will run the task.
- Pen dragging functions like Mouse dragging.

Touch operation in Mouse right-click button mode

The touch operation is the same as the click operation of Mouse right-click button.



A hand writing and recognition application such as Microsoft PenNote could have been installed in your computer. You can use it to input data, especially when using the computer in tablet mode.

Display and audio

A high-performance display system and a stereo audio system are both ready in your computer. Through the built-in high-quality display screen, stereo speakers and microphone, your computer is already capable of playing the multimedia applications alone well.



Besides, the multimedia function can be expanded to enrich your computer's application. You can do the following.

Outputting display to a VGA display device

8 Connect a VGA display device such as VGA monitor, digital projector to your computer through the VGA output port (D-sub15).

9 Use hot key Fn + (see "Hot keys" section on page 18) or "LCD" icon in Flybook Control Center (see "Flybook Control Center" section on page 34) to output display.

Outputting display to a video display device

10 Connect a video display device such as TV to your computer through the video output port.

11 Use hot key Fn + (see "Hot keys" section on page 18) or "TV" icon in Flybook Control Center (see "Flybook Control Center" section on page 34) to output display.



- When connecting a video display device to your computer, you need a conversion adapter. Find it in your computer's package.



- Before outputting the display to a video display device, check the device's input signal type and change your computer's output signal type to meet the device's input need. Your computer can output NTSC or PAL video signal. Change type in BIOS Setup Utility (See page 38). The default type is NTSC.

Outputting sound or voice to an earphone or external speaker

Connect an earphone or external speaker to your computer through the earphone/line-out port. The computer automatically switches the output of sound or voice to the connected device and mutes the built-in speakers.

Inputting sound or voice from an external microphone

Connect an external microphone to your computer through the microphone-in port. The computer automatically switches the input of sound or voice to the connected microphone and mutes the built-in microphone.

Connection through options

Several powerful built-in communication devices are available in your computer. By using Windows XP's plug and play components or connection components, or other connection utilities, you can connect your computer to peripheral devices, computers, networks or the Internet, to gain access to resources and functionality, or to communicate with your friends, co-workers and the rest of the world, no matter where you are physically located.



Plug and Play

Connect and disconnect devices without shutting down or restarting the computer.

High-speed link

USB link

USB is an external bus that supports Plug and Play installation. You can use a single USB port to connect up to 127 peripheral devices, including keyboards, Mouses, disk drives, CD/DVD-ROM drives, etc. Your computer has two USB 2.0 ports which transfer data at speed up to 480 Mbps and are backward compatible with USB 1.1 which transfers data at up to 12 Mbps.

Connect an USB peripheral device to any of your computer's USB ports. The Plug and Play installation feature makes an USB connection automatically.

FireWire (IEEE 1394) link

FireWire (IEEE 1394) is a serial bus interface standard offering high-speed communications and isochronous real-time data services and is commonly used for connection of data storage devices and digital video. But it's also popular in industrial systems for machine vision and professional audio systems. Your computer has two 4-pin FireWire400 ports which transfer data at speed up to 400 Mbps and also supports Plug and Play installation.

Connect a FireWire-equipped device to any of your computer's FireWire ports. The Plug and Play installation feature makes a FireWire connection automatically.

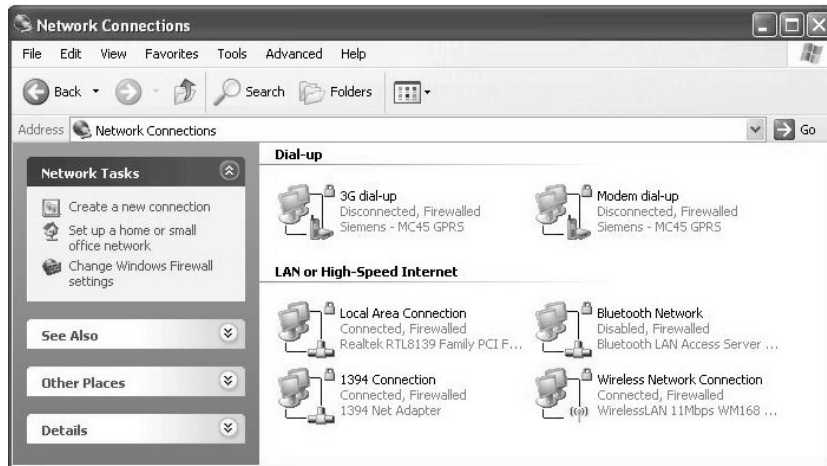


The computer's FireWire ports do not provide power. The devices which will be used to connect with the computer must have their own power.

Network and Internet connection

Windows XP already has a network and Internet connection suite installed for you to create connection components on the built-in devices and make connections. This suite has a Network Connections panel to control all connection activities. You can create, configure, store, use, and monitor components from within it. To get into Network Connections panel:

- 12** Click [Start][Settings][Control Panel] to explore Control Panel.
- 13** Click [Switch to Classic View] to switch Control Panel to classic view.
- 14** Double-click [Network Connections] icon to explore Network Connections panel.



Besides, for some connection types, Windows XP allows you to use other connection utilities to make connections.

Local area network connection

Through the Ethernet controller and Ethernet port (RJ-45), you can connect your computer to a local area network.

To make a local area network connection:

- 15** Connect an Ethernet cable from the jack or hub of a local area network to your computer's Ethernet port.
- 16** The local area connection component of Ethernet controller will be automatically enabled to make a connection.

The local area connection component of Ethernet controller was created and

Connection through options

configured at the time that the system was installing. And it's always active for making connection while the computer is running.

Once a connection is established, you will find the icon of the component shows "connected" in Network Connections panel. You can click the icon to open its connection status window to check connection status, enable and disable the connection or open its connection properties window to configure this connection component.



Wireless LAN connection

By using the built-in 802.11 b/g wireless LAN module, you can connect your computer to an infrastructure network or an ad hoc network.



Infrastructure network

A local area network that uses access points to connect computers and devices on the network.

Ad hoc network

A computer to computer local area network.

To make a wireless network connection:

17

Turn on wireless LAN module.

18

The connection component of the module will be started by the driver program and seek the networks in wireless range automatically, and then connects your computer to the most preferred network listed in Preferred Networks.

Once a connection is established, you will find the icon of the component shows "connected" in Network Connections panel. You can click the icon to open its connection status window to check connection status, stop and start the connection or open its connection properties window to configure this connection component.

For the first time use, a setup wizard will guide you to create and configure a connection component on the module.

If the preferred networks can not be found, you can click the message icon shown in taskbar notification area to see the list of wireless LANs found and then select one to connect to.

Modem dial-up connection

By using the built-in fax/data modem module, you can connect your computer to a remote computer, a remote network or the Internet.

Before making a dial-up connection, you must create a connection component on the fax/data modem module and on your dialing profile for your connection. More than one component can be created for different connection purpose.

To create modem dial-up connection components:

19 Enter into Network Connections panel.

20 Use "Create A New Connection" wizard to create dial-up connection components. When a component is created, an icon of the component will be shown in the panel.

To make a modem dial-up connection:

21 Connect a telephone line from an analog telephone jack to your computer's fax/data modem port (RJ-11).



22 In Network Connections panel, double-click the icon of the component you wish to use it to make connection to start connection.

Once the connection is established, you can find the icon shows "connected" in the panel. You can click the icon to open its connection status window to check connection status, stop the connection or open its connection properties window to configure this connection component.

Windows XP allows you to use other modem dial-up connection utilities to make connections. If you have such utilities installed, see their guides or on-line helps to learn how to create and make connections.

Wireless WAN connection

By using the built-in wireless WAN module (optional), you can connect your computer to the Internet.

To making a wireless WAN connection, also use a Windows XP's dial-up connection component.

Before use, you must apply for an access account, and get a SIM card and dialing profile from your wireless WAN service provider. SIM card is an access permission key of your account.

Before making a connection, you must create a connection component on the wireless WAN module and on your dialing profile for your connection.

Connection through options

To create a wireless WAN dial-up connection component:

23 Enter into Network Connections panel.

24 Use "Create A New Connection" wizard to create a wireless WAN connection component. When a component is created, an icon of the component will be shown in the panel.

To make a wireless WAN connection:

25 Insert a SIM card to SIM card slot

26 Turn on the wireless WAN module. When the module is turned on, it will seek your operator's network and register to it. If your operator's network is inaccessible, it will search for the networks available for use and guide you to select one to register.

27 In Network Connections panel, double-click the icon of the component to start connection.

Once the connection is established, you can find the icon shows "connected" in the panel. You can click the icon to open its connection status window to check connection status, stop the connection or open its connection properties window to configure this connection component.



The SIM card slot is a push-insert and push-reject type. When installing your SIM card:

- Make sure the gold finger side is put upside down.
- Check whether the card is fully inserted after inserting.

Windows XP also allows you to use other wireless WAN connection utilities to make connections. If you have such installed utilities, see their guides or on-line helps to learn how to create and make connections.



The built-in wireless WAN module is also capable of voice communication. A communication utility dedicated for wireless WAN communication, such as BVRP Mobile Phone Tool, could be available in your computer to make data or voice communication.

Bluetooth wireless connection

By using the built-in Bluetooth module (optional), your computer is capable of communicating with Bluetooth-equipped devices, such as computers, cellular phones, printers, faxes, keyboards, Mouses and so on, and could have the following versatile Bluetooth services:

- Personal area networking
- Dial-up networking
- Serial port connection
- File transfer

- LAN access
- Synchronization and PIM data exchange
- Printing
- Human interface device (Keyboard, Mouse) connection
- Faxing
- Connecting a headset
- Audio distribution
-

A Bluetooth utility, such as IVT BlueSoleil, has been installed in your computer. When the Bluetooth module is turned on, the device driver program starts the application automatically. A blue Bluetooth icon with white Bluetooth logo inside will appear in taskbar notification area.



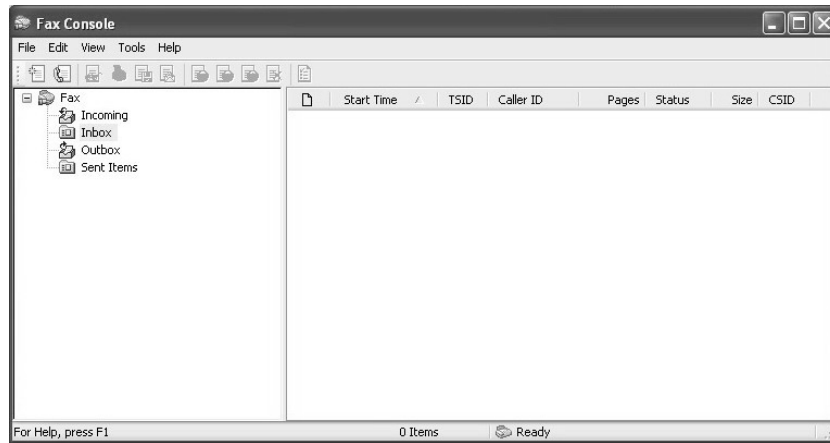
Double-click the icon to open the main window of the utility, or right-click the icon and then select service items to start services.

For the first time use, a setup wizard will guide you to configure the connection services.

Refer to the online-help of Bluetooth utility to see the details.

Faxing

The built-in fax/data modem module also supports faxing. You can use Windows XP's Fax or other fax applications to send and receive faxes. Windows XP also has a fax printer service to send faxes from any program that can print documents. Refer to Help and Support Center of Window XP to see fax.



To use other fax applications, see their guides or on-line helps.

PC card connection

The PC card slot accepts any CardBus type I and type II data and device cards, including memory cards, CF disks, modem cards, wireless LAN module cards, etc.

Windows XP also supports Plug and Play installation for PC card connections.

To install a PC card, insert a card into the PC card slot until it clicks into place.



To eject a PC card, push on the tip of the rod with your fingertip to eject the rod, and then push the rod to eject the card.



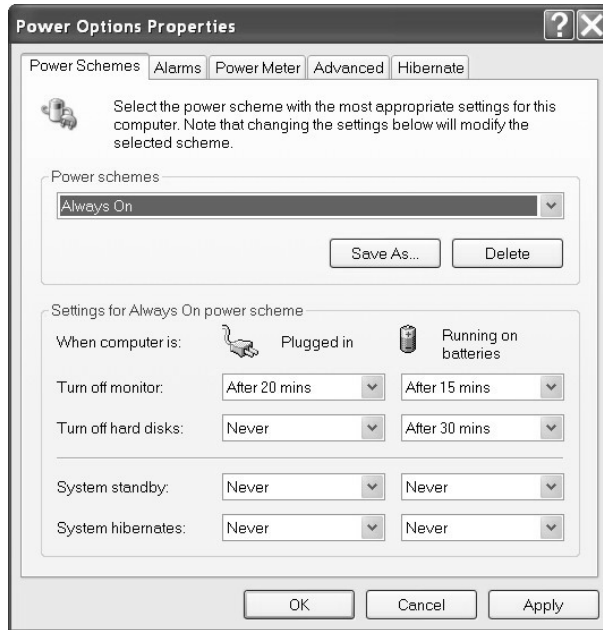
Power management

The computer controls its power activities through an **ACPI** power management unit. The unit employs a set of power management schemes to maximize power conservation and optimize system performance. Windows XP manages all power-saving features and provides you a Power Options utility to customize the computer's power system.

To start Power Options utility, follow the steps below:

28 Click [Start][Settings][Control panel] to explore Control Panel.

29 Double-click [Power Options] and a Power Options Properties window appears.



Customize your computer's power system in this window. Refer to Help and Support Center of Window XP to see ACPI and Power Options.

System utilities

Flybook Control Center

Flybook Control Center is a system utility that allows you to do the following:










- Perform the same functions as the hot keys do: It benefits you to use these specific system functions in tablet mode.
- Change display orientation: While using the computer in tablet mode, it can easily help you to change the display orientation.
- Start PenMount utility: Do things with your touch operation.
- View health information of your system.

To start Flybook Control Center, double-click [Flybook Control Center] icon in taskbar notification area. A Flybook Control Center window appears. Click “<<” and “>>” to open/close the extended window.



Doing what the hot keys do

Icon	Description
	Click the icon to turn on/off the wireless LAN module.
	Click the icon to turn on/off Bluetooth module.

Icon	Description
	Click the icon to turn on/off the wireless WAN module.
	Click the icon to start/stop outputting the display to the built-in screen.
	Click the icon to start/stop outputting the display to a connected VGA display device.
	Click the icon to start/stop outputting the display to a connected video display device.
	Click the icon to enter into Suspend to RAM mode (Depending on the settings in Power Options).
	Click the icon to enter into Suspend to Disk mode (Depending on the settings in Power Options).
	Click the icons to increase/decrease brightness. The bar in the center shows the level.
	Click the icons to increase/decrease the volume of audio system. The bar in the center shows the level.
	Click the icon to open/close audio system.

Changing display orientation

There are 4 orientations the display can be changed to. Click the relative orientation icon to start the change.



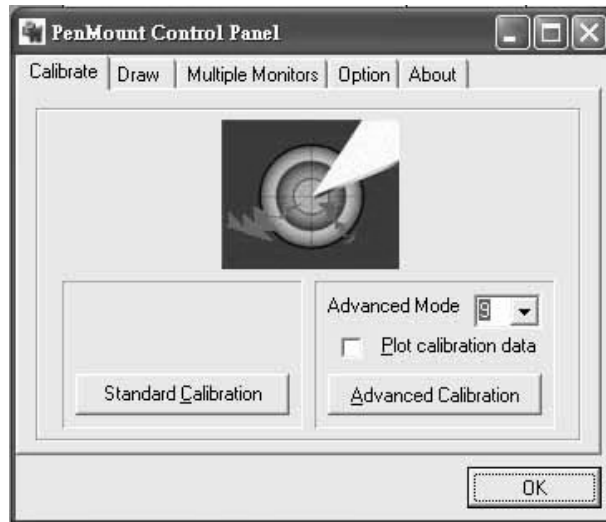
PenMount utility

PenMount utility is mainly used to calibrate the touch-panel and to check the positioning of touch-panel is correct or not. Click [PenMount] icon in Flybook Control Center to start PenMount utility.

Once the PenMount utility is started, a PenMount Control Panel window appears to allow you to do things with your touch operation.

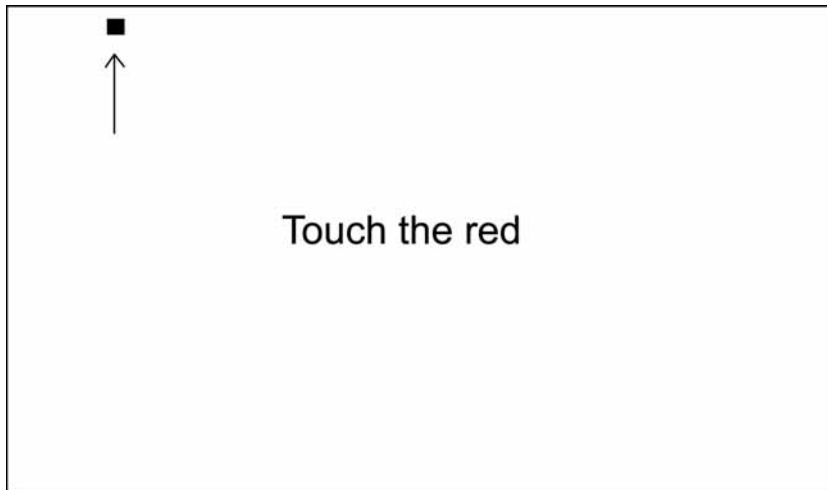
Calibrating the touch-panel

Under Calibrate tab, choose standard or advanced calibration procedure to calibrate your touch-panel.



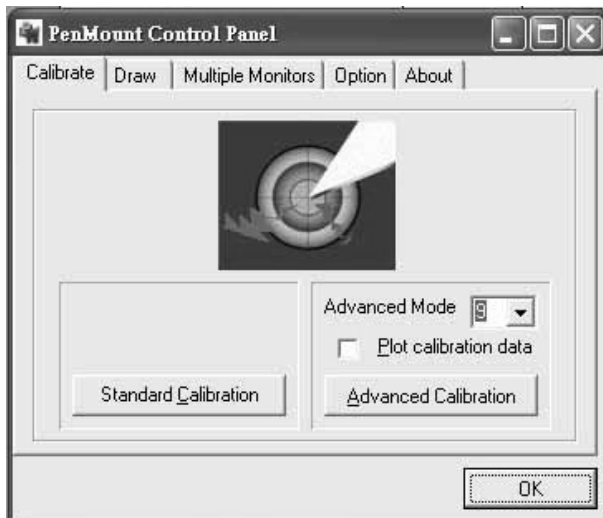
Follow the steps below to calibrate your touch-panel:

- 30** Click [Standard Calibration] to start a standard calibration procedure or select 4, 9, 15, or 25 points in Advanced Mode selection box, and then click [Advanced Calibration] to start an advanced calibration procedure. The screen then becomes clean with the first guide-point shown on certain location.
- 31** Use the stylus pen to touch the guide points one by one precisely until the last check point appears.
- 32** Touch the last check point to complete the procedure.



Checking the positioning of touch-panel

Under Draw tab, click [Draw] to open a draw panel in full screen, and then draw on the panel to check the positioning of your touch-panel is correct or not.



Flybook System Recovery utility

Flybook System Recovery utility can help you to do the following:

- Restore system to factory default one from the hidden partition of hard disk.
- Restore MBR (Master Boot Record).
- Calibrate batteries.

Follow the steps below to start the utility:

33 Turn on your computer.

34 In the beginning of boot sequence, when the screen shows "Hit F9,", press function key F9 to start the utility. A Flybook System Recovery window appears for your further operation.

BIOS setup utility

The Phoenix BIOS (**B**asic **I**nput **O**utput **S**ystem) controls the basic input/output activities of your computer. Check or modify BIOS settings in PhoenixBIOS Setup Utility.

Follow the steps below to start the utility:

35 Turn on your computer.

36 In the beginning of boot sequence, when the screen shows "Click mouse or press <Enter> for System Utilities.", click mouse button or press Enter key. A selection list appears.

37 Select [Launch System Setup] to start PhoenixBIOS Setup Utility. A PhoenixBIOS Setup Utility window appears for your further operation.

Securing your computer

Securing your computer against unauthorized access

There are two protections that you can apply to secure your computer against unauthorized access.

BIOS password

BIOS password prevents unauthorized boot-up and access to the BIOS setup utility. Once the password is set, you must enter the password in the beginning of boot sequence.

Follow the steps below to configure BIOS password:

- 38** Turn on your computer.
- 39** In the beginning of boot sequence, when the screen shows "Click mouse or press <Enter> for System Utilities.", click mouse button or press Enter key. A selection list appears.
- 40** Select [Password Options] to open a Password window.
- 41** Configure password in this window.

Operating system passwords

Operating system passwords prevent unauthorized access to your system. Windows XP allows more than one account to login. Every account has name and access right and could have password to prevent unauthorized access. Create and manage accounts in User Accounts utility.

To start the utility:

- 42** Click [Start][Settings][Control panel] to explore Control Panel.
- 43** Double-click [User Accounts] to start User Accounts utility. An User Accounts window appears for you to create and configure accounts.

Securing your computer against damage

Making frequent backups

Make frequent backups to secure your personal data. You can backup your data to the following media:

- Second logical disk drive (D drive).
- CF cards or CF disks.
- Recordable compact disks.
- External hard disks.
- Networked drives that you have access permissions.

Attaching a strap

The strap hole, which is on the right rear side of your computer, is used to attach a strap to prevent the computer from accidental drop. While using the computer in tablet mode, the attached strap becomes much more helpful.



To catch the computer only by dragging the strap is improper. It is very dangerous.

Restoring your system

You have two ways to restore your computer's system. Restoration is required when:

- The system becomes corrupt.
- The computer has a new hard disk installed.



After restoring, your system will become manufacture's default settings.

From the hidden partition of hard disk

If the internal hard disk is still a factory default one or it has ever been fully restored from the Recovery CD, the hidden partition contains a copy of default system image. Follow the steps below to restore your system from it:

- 44** Supply the computer with AC power (Strongly recommended. Steady power supply is necessary).
- 45** Turn on the computer.
- 46** Enter into Flybook System Recovery window (see page 38).
- 47** Under Basic tab, move cursor to Restore System Partition button and then press Enter key to start restoration procedure.
- 48** Follow the guide to complete the restoration.
- 49** If finished, exit from Flybook System Recovery utility to reboot your computer into Windows XP.

From Recovery CDs

The Recovery CDs can be found in your computer's package. They also contain a copy of default system image. By using the CDs, you can choose to restore your system only or also include copying the default system image to the hidden partition.

Follow the steps below to restore your system from the CDs:

- 50** Supply the computer with AC power (Strongly recommended. Steady power supply is necessary).
- 51** Connect an external USB CD/DVD-ROM drive to your computer.
- 52** Turn on the computer.
- 53** Enter into PhoenixBIOS Setup Utility window (see page 38).
- 54** Under Boot tab, change the boot priority and select "USB CD-ROM..." to be the first one.
- 55** Insert Recovery CD # 1 to the CD/DVD-ROM drive and then exit from the utility with saving to reboot your computer. The computer will boot from the connected USB CD/DVD-ROM drive.
- 56** Follow the guide to complete the restoration.

Restoring your system

57 When finished, reboot your computer and enter into BIOS setup utility again to change the boot priority. Select "IDE Hard Drive..." to be the first one.

58 Disconnect CD/DVD-ROM drive.

59 Exit from the utility with saving to reboot your computer into Windows.



Not every kind of external CD/DVD-ROM drive can support boot function. Before use, check whether your CD/DVD-ROM is a bootable one or not.

Calibrating the battery

Periodically calibrate battery can prolong battery life. Follow the steps below to calibrate your batteries:

- 60** Supply the computer with AC power.
- 61** Turn on the computer.
- 62** Enter into Flybook System Recovery window (see page 38).
- 63** Under Utilities tab, use Battery Calibration button to start calibration procedure.
- 64** If finished, exit from Flybook System Recovery utility and reboot your computer into Windows XP.

Changing parts

The computer has been designed to allow users to change its system memory and hard disk drive. If you need to change any of them, follow the respective procedures below.



The standard warranty does not cover any damage due to the improper operation.



Please refer to "Features" section on page 10 to see the specifications of system memory and hard disk drive.

Changing system memory

65 Disconnect AC adapter and remove battery pack.

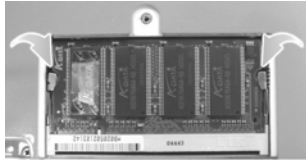
66 On the bottom of computer, release the screw fix on the cover of memory compartment and then pull the cover out.



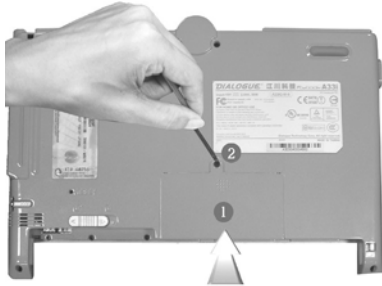
67 Slightly release two fasteners on SO-DIMM DDR module with your fingertip and take the module out.



- 68** Insert your SO-DIMM DDR module into SO-DIMM socket and push the module down until two fasteners click into place.



- 69** Replace the cover of memory compartment and then fix the screw back.



Changing hard disk

Removing keyboard

- 70** Disconnect AC adapter and remove battery pack.
- 71** Take out the keyboard by gently pushing in the three latches along the top side of keyboard and using a thin flat object to slowly lift it up.

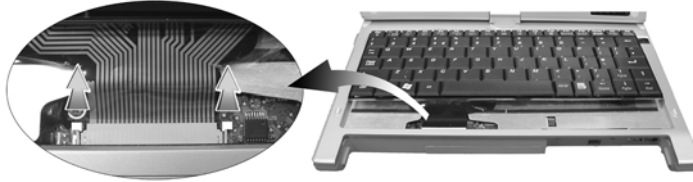


- 72** Gently move the keyboard forwards until the flat cable of keyboard is fully stretched, and then put the keyboard down on the top cover.

Changing parts

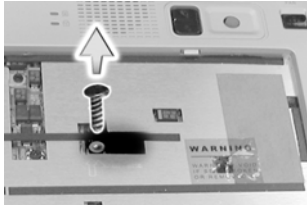


- 73** Gently release the lock mechanism of flat cable connector with your fingertips and then take the keyboard out.

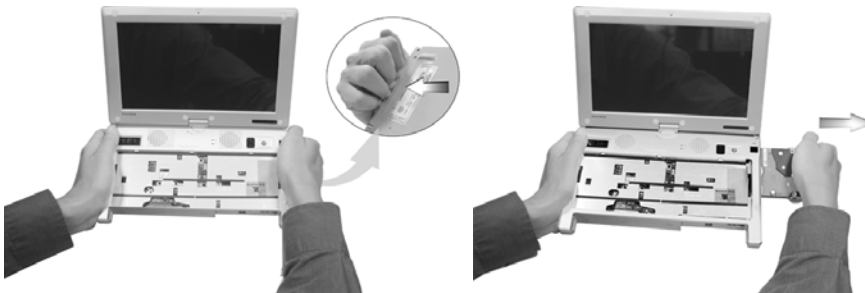


Taking hard disk set out of the computer

- 74** Find out the hard disk's fixing screw located on the keyboard frame (pointed by an arrow) and then take the screw out.



- 75** Hold the base of computer with your hands, gently tilt the computer's back side upwards slightly, clasp the hard cover with your right hand's fingertips, and then pull the hard disk set out with your right hand gently.



- 76** Place your computer down on the table.

Disassembling and reassembling hard disk set

- 77** Take out the two screws fixed on the hard disk set and then separate the hard disk and hard disk cover.



- 78** Replace the hard disks. Put the replaced hard disk and hard disk cover together and then fix two screws back.

Installing hard disk set back into the computer

- 79** Again, hold the base's left side of the computer with your left hand and gently tilt the computer towards.

- 80** Hold the hard disk set with your right hand and then insert the set into the hard disk bay gently until it is fully mated.



- 81** Place your computer down on the table.

- 82** On the location of keyboard frame, fix the hard disk screw back.



Installing keyboard back to the computer

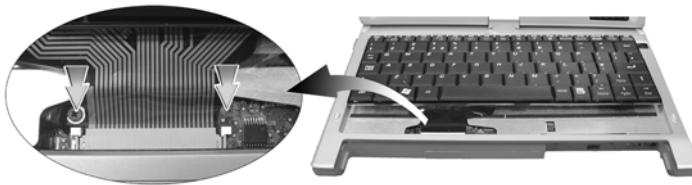
- 83** Put the keyboard down on the top cover, move it forwards until the top side stopped by the lid, and then adjust its location until the flat cable and flat cable connector are aligned.



- 84** Check and adjust the lock mechanism of flat cable connector. Make sure it is in fully released condition.



- 85** Insert the flat cable into flat cable connector, make sure it is fully inserted, and then push the lock mechanism with your fingertips to lock it.



- 86** Hold the keyboard with your two hands, tilt its top side slightly upwards, and then slip it slowly forwards into 3 fix holes in the bottom inner side of keyboard compartment. Place the keyboard down and gently and evenly click it into 3 latches along the top side with your fingers.



Troubleshooting

The information listed below will help you to isolate and resolve your computer's problems that you are most likely to encounter. If you have tried out the suggested solutions, please retrieve the service website to get service information or contact your local service center.

Basic identifying procedure for your problems

Follow the steps below to identify your problems:

- 87** Turn off the computer.
- 88** Make sure that the AC adapter is properly connected to your computer and the power source is active.
- 89** To avoid a possible cause of failure, remove the card in the PC Card slot and devices connected.
- 90** Leave the computer off for approximately 10 seconds, and then switch it on again. The computer should enter the boot sequence and start normally.
- 91** If the computer doesn't start up normally, look for the screen message or other clues as to the malfunction, and go through the troubleshooting tips below to try the suggested solutions.

Solutions for the problems most likely to encounter

The computer does not start or boot up

- If the Power indicator is not lit, the computer is without power. Make sure you have properly attached the AC adapter and power cord, or have installed a charged battery.
- If the computer is running on battery power, ensure that the battery charge is not low. If the battery appears to be charged, it may be faulty.
- If the computer is using the AC adapter, ensure that the AC outlet, airplane seat jack, or car cigarette lighter are working. If the AC outlet power is working, the AC adapter may be faulty.

Hard drive or external boot-up device is inaccessible

- If the hard disk indicator is lit, BIOS may be incorrectly set for your internal hard drive. Revise the BIOS settings for the Primary Master.
- Security may be set so that your operating system cannot be started.
- If you choose to boot up your system from an external device through USB or 1394 ports, make sure it is on and bootable media has been inserted.

The screen is blank or the display is abnormal

- The computer may be set to output the display to an external display device only. Press Fn and ~ simultaneously to stop the output.

- The power management system might have automatically blanked the screen to save power, and has gone into video time-out, standby mode, or hibernation mode. Press any key, move the track-point or Mouse, or push the power button to turn on the display.
- The angle of the display and the brightness level may not be adequate for the ambient lighting. Adjust the display angle and press Fn+F1 or Fn+F2 to adjust the brightness level until you have visibility.
- The LCD screen has a native resolution of 1024 x 600 (XVGA). If you set the resolution lower than this, the screen expands to fill the display. When the system can not expand its display to full screen on the LCD screen or on an external display device, you can right click on Windows desktop and select [Properties] to open Display Properties window. Then click [Settings] tab and set the resolution to an appropriate value.

No audio output

- The audio system is closed or the volume of audio system is set too low. Use hot keys or Flybook Control Center to open the audio system and adjust the volume.
- The audio output is disabled or set too low in your audio application. Open the audio output and adjust the volume in your application.
- When an earphone or external speaker is plugged into the earphone/line-out jack, the built-in speakers will be disabled automatically. If you can not hear sound from the built-in speakers, ensure that nothing is plugged into the jack.

The keyboard, track-point or Mouse does not work properly

- The system may have entered Suspend to RAM mode. Push the power button to resume the system.
- An application may have locked out your input device. Restart your system.
- If the keyboard or Mouse does not respond on USB or IEEE 1394 devices, ensure that the devices are installed properly and that the driver programs are also installed.

The PC card does not work properly

- The card may not be properly installed. Remove and re-insert the card.
- Your system may not have the correct driver program for the card. Re-install correct driver program.
- The card may have been installed while the system is busy and the system was not able to detect the card. Close all applications, restart the computer, and try to use the PC card again.

The Modem does not receive or transmit properly

- Make sure the telephone line is firmly connected and there is a dial tone.
- Check the port setting and the communication parameters (baud rate, parity, data length and stop bits) specified in the communication program.

The wireless WAN module does not work properly

- Make sure the wireless WAN module is available in your computer. You must apply for a wireless WAN account and get a SIM card from your network service provider for the module to operate.
- Make sure the SIM card is properly inserted into the SIM card slot.
- Make sure that the correct driver program is installed and an initialization command has been input in the extra initialization commands input box.

Can not connect to a wireless LAN

- An incorrect network name (SSID) or network key may be used. Make sure you have set the network name (SSID) and network key to the same values as the access point (infrastructure connection) or the computers to be connected with (Ad Hoc connection).
- The computer may be placed too far from other communication devices. Retry the connection after moving your computer closer to the computers to be connected with (Ad Hoc connection) or to the access point (infrastructure connection). Also, check the wave condition in the Wireless Network Connection Status window.
- Check if the wireless LAN module is turned on. Verify that Disable Radio is not checked in the Network setting window.
- Make sure you have access rights or network authentication to the network you want to connect to.
- Try to change channels to avoid active channel duplication.
- Check the setting of the protocol, work group, shared setting, and IP address.

The touch-panel does not work properly

- If the cursor position does not correctly match the pen tip position or this is the first time to use the touch-panel, you must calibrate it.
- Make sure that nothing else is pressing the touch-panel.

The battery can not be charged or loses power quickly

- Verify that the battery is properly installed and is not too hot or too cold.
- Calibrate battery.
- The installed battery may be dead or faulty. Replace it with a new one.

V series

Input: 15-19 Vdc \equiv 3.34-2.64A, 50W

FC Tested to comply with FCC standards
 FCC ID: JYV-V331G-W-B
 FCC ID: JYV-V331-W-B

FOR HOME OR OFFICE USE

Complies with Part 15 and 68 of the FCC Rules.

Operation is subject to the following two conditions:

- (1) this device may not cause harmful interference, and
- (2) this device must accept any interference received, including interference that may cause undesired operation.

This class B digital apparatus complies with Canadian ICES-003

IC: 4947A-V331G-W-B IC: 4947A-V331-W-B

- Outdoor wireless LAN is restricted between channel (1~7) in France.
- The unit is intended for connection with PSTN, GPRS and GSM.

Complies with Canada RSS-210
 Adapter Source see User's Manual

Patent: U.S. Des. 499725 China ZL 2003 3 0102222.7
 EU 00105093-0001 Taiwan D 102369

Dialogue Technology Corp. All right reserved.

MADE IN TAIWAN



AT	EE	HU	LU	SK	IS
BE	FI	IE	MT	SI	LI
CY	FR	IT	NL	ES	NO
CZ	DE	LV	PL	SE	CH
DK	GR	LT	PT	GB	

RF Exposure:

SAR compliance for specific co-located transmitter conditions of the WLAN and BT, and of the GPRS and BT was evaluated for near-body configurations; as shown in the composite filing under FCCID JYV-V331G-W-B and FCCID JYV-V331-W-B, other co-located configurations are not authorized and require separate evaluation. The highest SAR value for this device as reported to the FCC when tested for placed next to body, as described in the user guide, is 0.00318 W/kg for GSM Body SAR, 0.023 W/kg for PCS Body SAR and 0.038 W/kg for WLAN Body SAR.

Note: The manufacturer is not responsible for any radio or TV interference caused by unauthorized modifications to this equipment. Such modifications could void the user's authority to operate the equipment.

AUS:

The user need to switch off the device when exposed to areas with potentially explosive atmospheres such as petrol stations, chemical storage depots and blasting operations.