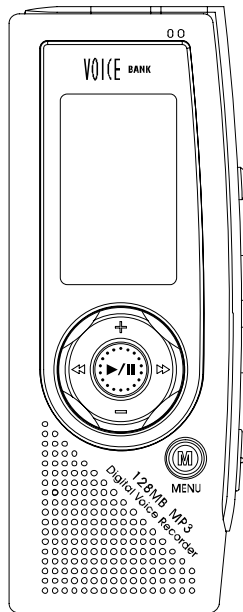




DIGITAL VOICE RECORDER

MODEL : DDR-5000

## User Guide manual



Thank you for purchasing PORTABLE DIGITAL AUDIO PLAYER from DIASONIC TECHNOLOGY Co. Please carefully read the Instruction manual for safe use of the product. We recommend that you to keep this instruction manual for future reference.

# Preface

Thank you for purchasing Diasonic MP3 Player.

Please read this instruction manual carefully before use.

If you find any defect during the use of this unit, please contact A/S Center [Tel 031-474-0852; Head Office].

## Precautions:

- Do not repair, disassemble or modify the unit at your own discretion.
- The memory content may be changed or lost due to misuse, static electricity or electric shock during the repair or battery change. **Be sure to make a note of important content.**
- Diasonic assumes no responsibility for any damage caused by change or loss of memory content.
- Do not drop the unit in the water or keep it in any damp environment.
- This instruction manual is subject to change without notice for the purpose of product improvement.

## Copyright

- The MP3 files created for MP3 conversion shall not be used for any commercial or public purposes. Any violation of the prohibition may be a breach of copyright laws.
- Any unauthorized reproduction of recorded files for any other purposes than personal use is strictly prohibited by the relevant laws and regulations.

## Note

This instruction manual is required for the effective use of Diasonic MP3 Player. Pay special attention not to lose the manual as it is not provided separately from the unit.

# Safety Precautions

## Warning

- Keep the batteries out of reach of the children. If a child swallowed a battery, please consult a doctor immediately.
- Do not have the battery shorted, disassembled, heated or put in fire. This may cause leakage, heat, explosion or fire.
- If the battery leakage gets in your eyes, wash it off with clean water, and seek immediate medical treatment. If not, you may lose your sight.
- If the LCD is damaged, do not touch the liquid. If the liquid contacts your eyes or skin, wash it off with clean water, and seek immediate medical treatment.
- If you use the rechargeable batteries, read the user's manuals for batteries and chargers carefully before use.
- Read this instruction manual carefully before use.

### Using earphones

#### Road safety

- Do not use earphones while driving, cycling or operating any motorized vehicle. It may cause a traffic hazard and is illegal in some areas. It can also be dangerous to play your earphones at high volume while walking, especially at pedestrian crossings.

#### Preventing hearing damage

- Avoid using earphones at high volume.  
Hearing experts advise against continuous, loud and extended play.
- If you experience a ringing in your ears, reduce the volume or discontinue use.

## **FCC Information**

This device complies with Part 15 of the FCC Rules. Operation is subject to the following two conditions:

- (1) This Device may not cause harmful interface, and
- (2) This device must accept any interference received, including interference that may cause undesired operation.

Note: This equipment has been tested and found to comply with the limits for CLASS B digital device, pursuant to Part 15 of FCC Rules. These limits are designed to provide reasonable protection against harmful interference when the equipment is operated in a commercial environment. This equipment generates, uses and can radiate radio frequency energy and, if not installed and used in accordance with the instructions, may cause harmful interference to radio communications. However, there is no guarantee that interference will not occur in a particular installation. If this equipment does cause harmful interference to radio or television reception, which can be determined by turning the equipment off and on, the user is encouraged to try correct the interference by one or more of the following measures:

- 1.1. Reorient or relocate the receiving antenna.
- 1.2. Increase the separation between the equipment and receiver.
- 1.3. Connect the equipment into an outlet on a circuit different from that to which receiver is connected.
- 1.4. Consult the dealer or experienced radio/TV technician for help.

## **WARNING**

Changes or modifications not expressly approved by the manufacturer could void the user's authority operate the equipment.

# Contents

## **Precautions**

1. Functions and Features
2. Parts and Components
3. Basic Operation Guide
4. Button
5. Receiving FM Radio
6. Mode Menu
7. Main Menu
8. Recording in Recording mODE
9. Connecting to external audio device
10. Installation of Win98SE driver & removing device
11. USB Driver Auto Removing Program
12. Management of folder and file
13. Downloading the file
14. Erasing file
15. Format file
16. Upgrading Firmware
17. ICON

## **Specifications**

## **Warranty**

# Functions and Features

## ■ DIGITAL VOICE RECORDER

- UP TO 16,960 MIN RECORDING TIME(SP MODE AND 1GB)
- 8FOLDERS TO ORGANIZE FILES
- STORE UP TO 128 FILES FOR EACH FOLDER
- CONTINUE FOLDER FUNCTION: AUTOMATICALLY MOVE TO NEXT FOLDER IF INDEX IS FULL.
- VARIABLE RECORDING MODE (SHQ/HQ/SP IN MP3 FORMAT AND USER MODE IN MPEG1 LAYER3)
- MIC SENSITIVITY ADJUSTABLE IN RECORDING.
- PLAY BACK OPTION IN SLOW/STANDARD/FAST WITHOUT SOUND DISTORTION.
- RECORDING INDICATOR WITH RED LED
- TIMER RECORDER UP TO 3 DAILY, WEEKLY AND SPECIFIC DATE
- 2 MODES OF ARS(AUTOMATIC RECORDING SYSTEM)  
MODE A: ALL MESSAGES ARE RECORDED INTO 1 INDEX FILE.  
MODE B: EACH MESSAGE HAS ITS OWN INDEX FILE IN SEQUENCE AFTER 5 SECONDS WITH NO SOUND BETWEEN PREVIOUS AND NEXT FILE.
- PAUSE AND RESUME
- MONITORING: MONITORING THE RECORDING BY EARPHONE ON RECORDING.

## ■ MASS STORAGE

- SIMPLY CONNECT IT TO PC. NO REQUIRED OPERATING PROGRAM & DRIVER CD(EXCEPTING WIN98SE)
- PC AND MAC COMPATIBLE
- EASY DRAG AND DROP FILE TRANSFERENCE

## ■ FM RADIO

- ENCODING FM BROADCASTING
- 10 FREQUENCY PRESET

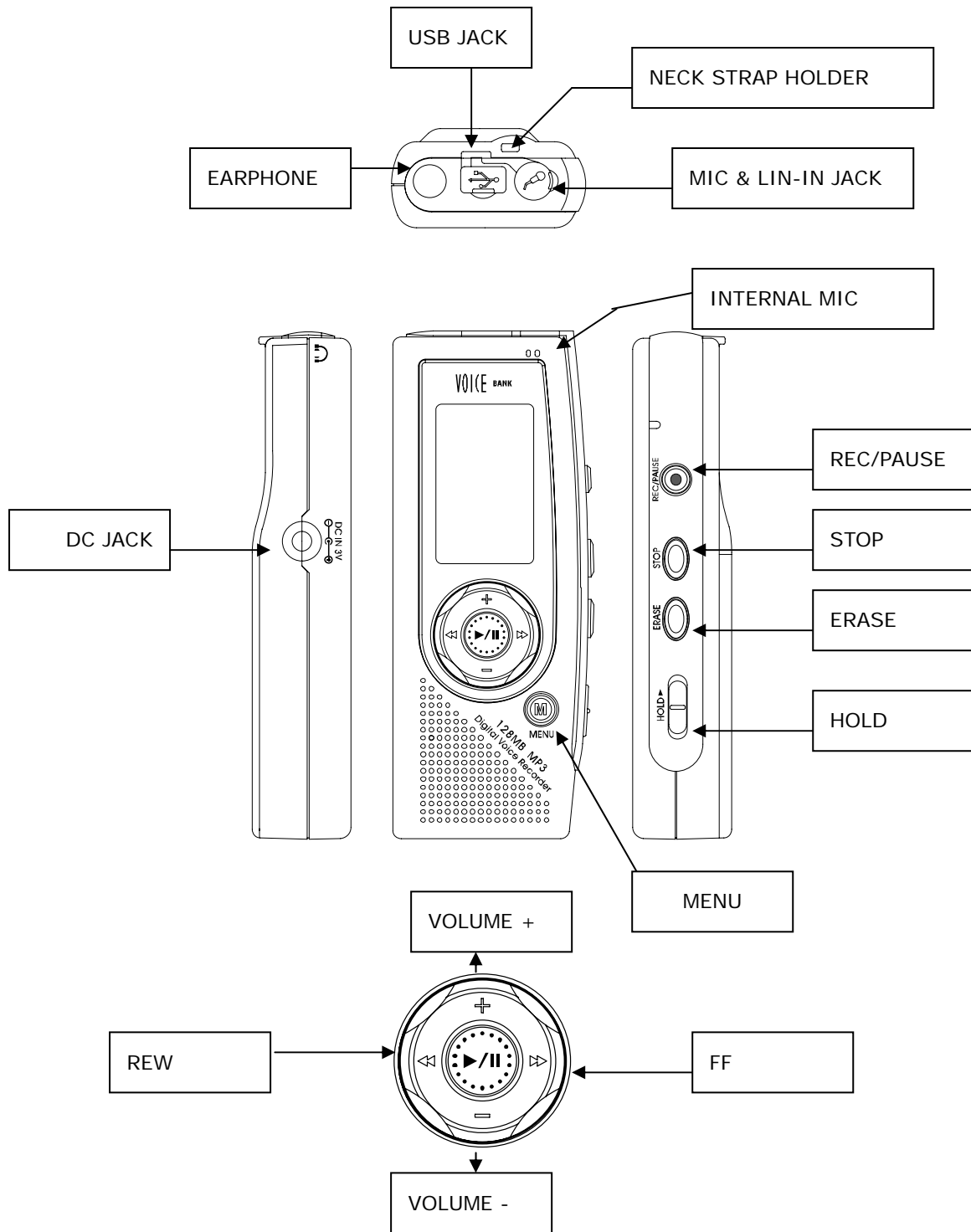
## ■ MP3/WMA PLAYER & ENCODER

- ID3 TAG SUPPORT(ARTIST/TITLE/FREQUENCY/BIT RATE)
- SCROLL SPEED CONTROLLING
- MULTI LANGUAGE SUPPORT
- 5EQ (NORMAL/CLASSIC/LIVE/POP/ROCK)
- SYNC FUNCTION: AUTOMATICALLY RECOGNIZE THE END AND BEGINNING OF THE MUSIC FROM EXTERNAL AUDIO DEVICE IN RECORDING THRU CONNECTING AUDIO CABLE AND RECORD.

USER EASILY UPGRADES NEW FIRMWARE PROVIDED BY MAKER  
EASY-TO-USE BUTTON FOR QUICK NAVIGATION THROUGH FOLDERS AND OPTIONS  
SET UP THE ALARM TO PLAY AUTOMATICALLY AS A REMINDER TO MEETING,  
BIRTHDAY AND MORE.  
EASY-TO-READ ALL STATUS ON THE LARGE BACKLIGHT LCD DISPLAY WITH DOT  
MATRIX  
VARIABLE FLASH MEMORY UP TO 1G(64MB/128MB/256MB/512MB/1GB)  
25HOURS PLAY BACK WITH 2 AAA BATTERIES

# Parts and Components

## (1) Main set





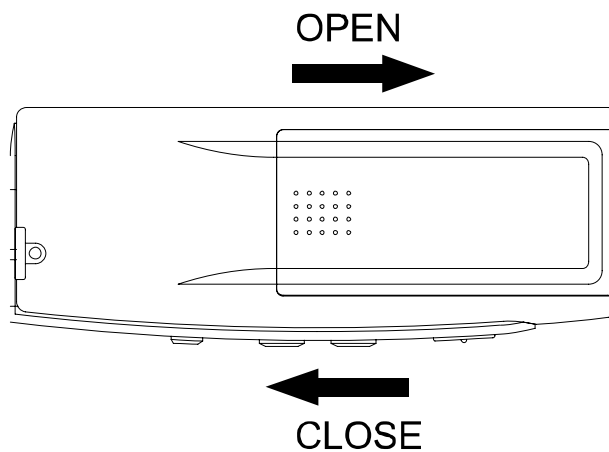
(1) LCD

	MODE
	INDEX INFORMATION
	FILE INFORMATION SYNC/BIT RATE/EQ/SPEED    KEY/REPEAT
	TIME ALRAM ON/OFF    ARS INTRO PLAY    REPEAT    3D SOUND EFFECT VOLUME LEFT/RIGHT    HOLD    BATTERY STATUS




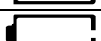
	TIMER ON/OFF		ALARM ON/OFF
	ARS ON/OFF		3D SOUND ON/OFF
	REPEAT		INTRUDUCTION PLAY BACK
	L/R SPECTRUM		
	BATTERY STATUS		

(3) BATTERY

1) PUT BATTERIES (LR03 TYPE)



2) BATTERY POWER STATUS INDICATOR

	FULL CHARGED
	SOME POWER CUSTOMED
	THINKING OF CHANGING BATTERY
	CHANGE BATTERY

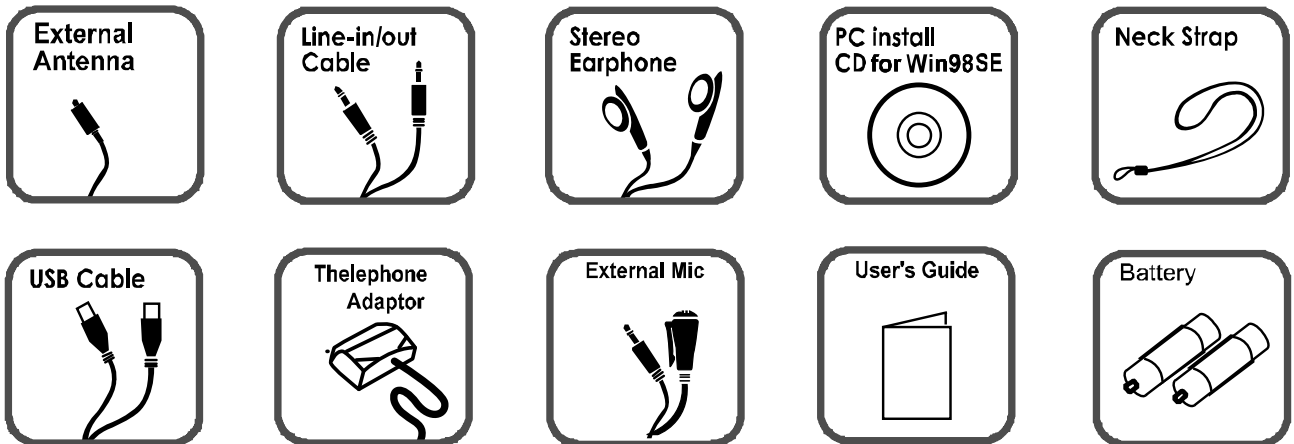
☞ CHECK THE POLARITIES OF THE BATTERIES IF LCD DISPLAY DOESN'T TURN ON AFTER INSERTING NEW BATTERIES.

3) TYPICAL BATTERY LIFE TIME

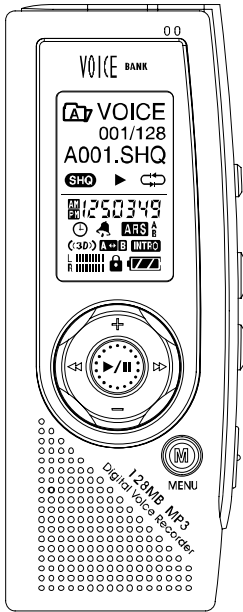
BATTERY TYPE	RECORDING (VOLUME:MEDIUM)	PLAYBACK VIA SPEAKER (VOLUME:MEDIUM)	PLAYBACK VIA EARPHONE (VOLUME:MEDIUM)
2 AAA LR03	APPROX. 13HRS	APPROX. 13HRS	APPROX.25HRS

- ☞ BATTERY LIFE MAY BE DIFFERENT FROM ABOVE MENTIONED TIME ACCORDING TO BATTERY BRAND & CONDITION.
- ☞ DO NOT USE DIFFERENT TYPE AND BRAND BATTERY TOGETHER.
- ☞ WHEN THE DEVICE IS LEFT UNUSED FOR A LONG TIME, REMOVE BATTERIES.




(4) ACCESSARY



# BASIC FUNCTION

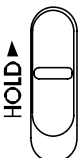

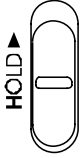


## (1) TURN ON/OFF

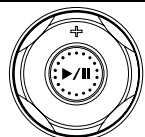

TO TURN ON, HOLD THE  OR  KEY FOR 2-3 SECONDS.  
 TO TURN OFF, HOLD THE  KEY AGAIN WITH LONG KEY.

- ☞ IF USB CABLE IS CONNECTED, AUTOMATICALLY POWER IS ON.
- ☞ IF YOU PUT THE BATTERY TO SET, "A" FOLDER IN THE VOICE MODE WILL DISPLAY. BEFORE USING IT, WE RECOMMAND TO SET UP THE TIME AND DATE FOR ALRAM & RESERVED RECORDING FUNCTIONS.

## (2) HOLD KEY

	HOLD ON	ALL KEYS WON'T WORK.  WILL DISPLAY ON THE LCD.
	HOLD OFF	ALL KEYS WORK PROPERLY.

## (3) VOLUME

	VOLUME UP BY PRESSING "+" KEY.
	VOLUME DOWN BY PRESSING "-" KEY.

- ☞ VOLUME CAN BE ADJUSTABLE WITHIN 30 LEVEL(0-30).
- ☞ IF TURN ON, DEFAULT VOLUME IS SET UP AUTOMATICALLY.

#### (4) CHANGING MODE



BY PRESSING MENU BUTTON FOR 1-2 SECONDS, MODE MENU WILL DISPLAY.  
FOR MOVING TO THE MODE WANTED, PRESS "+/-" BUTTON.  
SELECT THE MODE BY PRESSING "PLAY/PAUSE" BUTTON.

VOICE	MUSIC	L-IN ENC	FM ENC	FM	B-MARK	FOLDER PLAY
-------	-------	----------	--------	----	--------	-------------

#### (5) INTRO PLAY

THIS IS FOR PLAYING THE FIRST FEW SECONDS OF EVERY TRACK FOR QUICK REVIEW OF VOICE FILES OR MUSIC. PRESS "PLAY AND PAUSE" BUTTON DURING PLAYING BACK. THE **INTRO** ICON APPEARS ON THE LCD AND THE FIRST 5, 10 OR 15SECONDS OF EVERY TRACK PLAY, DEPENDING ON THE SELECTED TIME.

MENE BUTTON WITH LONG KEY -> TIME -> INTRO TIME(5, 10 OR 15 SECONDS)

#### (6) A<->B REPEAT PLAY

TO DESIGNATE A SPECIFIC SECTION TO PLAY REPEATEDLY, PRESS THE "REC/PAUSE" BUTTON AT THE BEGINNING OF THE DESIRED SECTION FOR 1SECOND DURING PAYING BACK.THE **A↔** IS BLINKING AND TO DESIGNATE THE END OF THE SECTION YOU WISH TO REPEAT, PRESS "REC/PAUSE" BUTTON AGAIN AT THE ENDING POINT. THE **A↔B** ICON APPEARS AND THE SELECTED SECTION REPEATEDLY PLAYS. TO END THE A<->B PLAY, PRESS "REC/PAUSE" BUTTON AGAIN.

#### (7) PLAYBACK SPEED CONTROL

A CURRENT SPEED DISPLAYS ON THE LCD BY PRESSING "REC/PAUSE" BUTTON FOR 2-3SECONDS DURING PALLYBACK. TO SELECT DESIRED SPEED (STANDARD, FAST OR SLOW) BY PRESSING "REW OR FF" BUTTON. IF STOP, SPEED IS BACK TO STANDARD.

#### (8) REPEAT

WHEN FILE PLAYS BACK, REPEAT MODE CAHNGES BY PRESSING "ERASE" BUTTON FOR 2-3SECONDS.

## (9) BOOKMARK SETTING

TO BOOKMARK A SELECTED MUSIC FILE, PRESS "STOP" BUTTON IN STOP FOR 1SECOND. BOOKMARK IS AVAILABLE IN THE MUSIC MODE.

## (10) PC CONNECTION

WHEN THE UNIT IS CONNECTED TO A PC VIA USB CABLE, USB ICON APPEARS ON THE LCD. IN THIS CASE, PLAYBACK IS NOT AVAILABLE.

## FM Radio

### (1) TURN ON FM



TURN ON THE SET AND SELECT FM IN THE MENU.

### (2) AUTOMATIC TUNEING



The AUTOMATIC TUNEING IN THE STATION WITH STRONG SIGNAL. PRESS AND HOLD FORWARD OR REWIND BUTTON FOR ONE SECOND. THE TUNNER AUTOMATICALLY SCAN AND STOP ON THE NEXT STATION WITH A STRONG SIGNAL. IN AREA WITH WEAK RECEPTION, PRESS THE FAST FORWARD OR REWIND BUTTON TO FIND TUNE A CLEAR STATION.

### (3) PRESET STATION

THE UNIT CAN STORE UP TO 10 FM STATIONS IN PRESET MEMORY.

TUNE IN THE STATION YOU WOULD LIKE TO STORE IN MEMORY.

PRESS "ERASE" BUTTON FOR 1 SECOND FOR ENTERING PRESET MODE.

WHEN BLINKING CHANNEL 1, SELECT THE PRESET NO. YOU WOULD LIKE TO STORE AND THEN PRESS "PALLY/PAUSE" BUTTON ONCE AGAIN FOR STORE THE STATION.

☞ YOU CAN CHECK THE PRESET STATION BY PRESSING "ERASE" BUTTON AT THE FREQUESNCY MODE AND MOVE TO ANOTHER STATION BY "REW/FF" BUTTON.

### (4) RECORDING FM

IF YOU WOULD LIKE TO RECORD THE PRESENT STATION, PRESS "REC" BUTTON.

THE RECORDED FILE IS STORED TO FM ENC FOLDER WITH F001-48KBPS\_20040101\_010101.MP3 AND THE FILE NAME IS SEQUENTLY ADDED ACCORDING TO RECORDED ORDER.

☞ NOISE MAY OCCUR WHEN RECORDING FM IN WEAK COVERAGE OR INSIDE OF THE BUILDING. IF SO, MOVE TO STRONG COVERAGE TO RECEIVE BETTER FM QUALITY.

THE EARPHONE CAN BE USED AS AN ANTENNA, SO EXTEND AS LONG AS IT CAN.

FOR BETTER QUALITY IN LISTING TO FM, USE EARPHONE AND IN LISTING TO FM THRU EXTERNAL SPEAKER, PULG PROVIDED EXTERNAL ANETNNA.

# BUTTONS

## (1) VOICE RECORDING MODE

BUTTON	OPERATION	THE STATUS OF SET		
		STOP	PALYBACK	RECORDING
PLAY	SHORT	PLAYBACK	PAUSE	REMAINING TIME
	LONG	TURN OFF	INTRO PLAY	-
FF	SHORT	GO TO NEXT FILE	GO TO NEXT FILE AND PLAY	INCREASE INDEX(AFTER 5SECONDS)
	LONG	GO TO NEXT FILE SEQUENTLY	S-FORWARD CURRENT FILE	-
REW	SHORT	GO TO PREVIOUS FILE	GO TO BEGANNING OF THE FILE, IF PLAY CURRENT FILE OVER 5SECONDS. PLAY PREVIOUS FILE, IF PLAY FILE UNDER 5 SECONDSD	-
	LONG	GO TO PREVIOUS FILE	S-BACKWARD SURRENT FILE	-
MENU		MENU	MENU	-
VOLUME+		VOLUME UP	VOLUME UP	VOLUME UP
VOLUME-		VOLUME DOWN	VOLUME DOWN	VOLUME DOWN
REC	SHORT	RECORDING	CHANGING REPEAT	PAUSE
	LONG	RECORDING	PLAYBACK SPEED CONTROL	-
ERASE	SHORT	ERASE 1 FILE	-	-
	LONG	ERASE 1 FOLDER (HOLD 1SECOND) ERASE ALL FOLDER (HOLD 2SECOND)	-	-
STOP		-	STOP	STOP RECORDING
HOLD		HOLD	HOLD	HOLD

## (2) FM RADIO MODE

BUTTON	OPERATION	MODE		
		FREQUENCY MODE	PRESET MODE	SET UP THE STATION
PLAY/PAUSE	SHORT	ENTERING SETTING STATION	-	SETTING STATION
	LONG	POWER OFF	POWER OFF	POWER OFF
FF	SHORT	TUNE FM FREQ. SLIGHTLY	FORWARD NEXT PRESET CH.	CHANNEL UP
	LONG	AUTO SEEK +	AUTO CHANEL UP	-
REW	SHORT	TUNE FM FREQ. SLIGHTLY	FORWARD PREVIOUS PRESET CH.	CHANNEL DOWN
	LONG	AUTO SEEK	AUTO CHANEL DOWN	-
VOLUME+	SHORT	VOLUME UP	VOLUME UP	VOLUME UP
	LONG	VOLUME UP AUTOMATICALLY	VOLUME UP AUTOMATICALLY	VOLUME UP AUTOMATICALLY
VOLUME-	SHORT	VOLUME DOWN	VOLUME DOWN	VOLUME DOWN
	LONG	VOLUME DOWM AUTOMATICALLY	VOLUME DOWM AUTOMATICALLY	VOLUME DOWM AUTOMATICALLY
REC		RECORDING	RECORDING	RECORDING
ERASE		PRESET	FREQ. MODE	-
STOP		-	-	-
HOLD		HOLD	HOLD	HOLD



### (3) MP3/WMA MODE

BUTTON	OPERATION	THE STATUS OF SET	
		STOP	PLAY
PLAY/PAUSE	SHORT	PALY	PAUSE
	LONG	TURN OFF	INTRO PLAY
FF	SHORT	GO TO NEXT FILE	GO TO NEXT FILE AND PLAY
	LONG	GO TO NEXT FILE SEQUENTLY	S-FORWARD CURRENT FILE
REW	SHORT	GO TO PREVIOUS FILE	GO TO BEGANNING OF THE FILE, IF PLAY CURRENT FILE OVER 5SECONDS. PLAY PREVIOUS FILE, IF PLAY FILE UNDER 5 SECONDSD
	LONG	GO TO PREVIOUS FILE SEQUENTLY	S-BACKWARD CURRENT FILE
MENU/MODE	SHORT	MODE	MODE
	LONG	MENU	MENU
VOLUME +		VOLUME UP	VOLUME UP
VOLUME -		VOLUME DOWN	VOLUME DOWN
REC/PAUSE	SHORT	REC	PLAY SPEED CONTROL
	LONG	X	CHANGING REPEAT(A↔B)
ERASE	SHORT	ERASE 1 FILE	EQUALIZER
	LONG	ERASE 1 FOLDER PRESSING OVER 1SECOND. ERASE ALL FOLDER PRESSING OVER 2SECONDS	REPEAT
STOP		BOOKMARK	STOP
HOLD		STOP	STOP

## MODE MENU

YOU CAN GO TO "MODE MENU" BY PRESSING "MENU" BUTTON FOR 1 SECOND. MODE MENU IS CONSIST OF BELOW MODE. TO MOVE TO ANOTHER MODE, USE "VOLUME +/-" BUTTON.

VOICE

MUSIC

L-IN ENC

FM ENC

FM

B-MARK

FOLDER PLAY



### (1) VOICE

PLAY BACK VOICE FILE RECORDED IN VA001-8KBPS\_20040101\_010101.MP3 TYPE. FILE NAME IS STAMPED IN SEQUENCE.

VOICE MODE HAS 8 SUBORDINATE FOLDERS AND WITHOUT APPOINTING THE SPECIFIC FOLDER, FILE RECORDS FROM A FOLDER. EACH FOLDER CAN HAVE 128FILES.

### (2) MUSIC

MP3 AND WMA PLAY IN THE SET, BUT FILE IN VOICE, L-IN ENC AND EM ENC FOLDER IS NOT PLAYED.

BOOKMARK ON PLAYING FILE IS AVAILABLE.

999 FILES CAN BE RECORDER AS MUCH AS MEMORY IS AVAILABLE.

### (3) L-IN ENC

PLAY THE FILE IN L-IN ENC FOLDER.

FILE IS STAMPED IN L001-48KBPS\_20040101\_010101.MP3. IN SEQUENCE.

256FILES CAN BE RECORDED AS MUCH AS MEMORY IS AVAILABLE.

### (4) FM ENC

PLAY THE FILE IN FM ENC FOLDER.

FILE IS STAMPED IN F001-48KBPS\_20040101\_010101.MP3. IN SEQUENCE.

256FILES CAN BE RECORDED AS MUCH AS MEMORY IS AVAILABLE.

### (5) FM

RECEIVING RADIO STATION.

## (6) B-MARK

STORE FAVORITE SONGS.(20FILES ARE AVAILABLE.)

BOOKMARK IS SET BY PRESSING STOP BUTTON ON THE MUSIC MODE.

BOOKMARK IS DISPLAYED ON THE FILE INFORMATION.

INITIALLY PLAYLIST FOLDER EXISTS AND M3U FORMAT FILE CAN BE SAVED AND PLAYED.

32 FILES CAN BE STORED.

## (7) FOLDER PLAY

IF SET THIS MENU, ALL FOLDERS ARE DISPLAYED EXCEPTING VOICE, RADIO, LINE FOLDER.

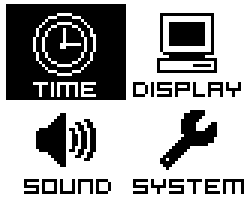
IN SETTING THE FOLDER, YOU CAN SEE FILE INFORMATION AND PLAY MP3/WMA FILE IN THE APPOINTED FOLDER.

 FOLDER SUPPORT SPEC.

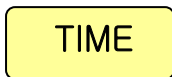
- ROOT:256ENTRY(FOLDER+FILE)
- SUB DIRECTORY DEPT: 10DEPT INCLUDING ROOT
- LIMITATION OF SUB DIRECTORY: 512( EXCLUDING ROOT AND RECORD FOLDER)

# MAIN MENU

TO ENTER INTO “MAIN MENU”, PRESS “MENU” BUTTON FOR 2–3SECONDS.  
 VOLUME +/- WORKS AS A MOVING BUTTON TO ANOTHER FUNCTION AND PRESS  
 “PLAY/PAUSE” BUTTON FOR SELECTION OF THE FUNCTION YOU WANT. BY  
 PRESSING MENU BUTTON AGAIN, YOU CAN GO OUT OF SUBORDINATE MENU. IF YOU  
 DO NOT OPERATE ANY BUTTON AFTER ENTERING INTO MENU FOR 5SECONDS,  
 AUTOMATICALLY MENU FUNCTION WILL BE RELEASED.

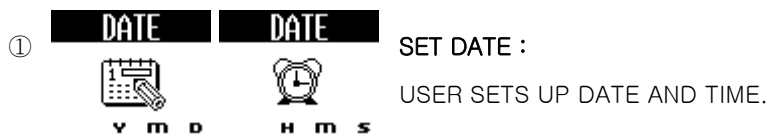


1.



YOU CAN SET UP THE TIME RELATED TO PLAYER’S SYSTEM ON THIS MENU.

THIS MENU CONSISTS OF SET DATE, TIMER REC, ALARM PLAY, POWER OFF TIME, SLEEP TIME, INTRO TIME.



### ※ SET UP DATE

- ENTER INTO TIME MENU AND SELECT “SET DATE”.
- SET UP THE YEAR, MONTH, DAY WHEN YOU WANT BY PRESSING “REW/FF” BUTTON FOR MOVEMENT AND “PLAY/PAUSE” BUTTON FOR SELECTION.



☞ YOU MUST SET UP “SET DATE” FIRST.

- ON THE SETTING DISPLAY, NO. 1 CHANNEL WILL BE BLINKING.
- MOVE TO THE SPECIFIC NO. YOU WANT TO SET UP BY PRESSING “REW/FF” BUTTON AND PRESS “PLAY/PAUSE” BUTTON FOR SELECTION.

**※ SETTING UP TIMER REC**

- THE FUNCTION HAS DATE/DAILY/WEEKLY, 3 MODES.

1. DATE (1 TIME)

a. ENTER INTO DATE.

SET UP YEAR, MONTH, DAY BY PRESSING “REW/FF” FOR MOVING AND “PLAY/PAUSE” FOR SELECTION.

b. IF IT IS COMPLETED, AUTOMATICALLY DISPLAY TRANSFERS TO TIME SETTING DISPLAY.

TIME SETTING IS SAME AS THE PROCEDURE OF DATE.

2. DAILY (PLAYBACK AT THE SAME TIME EVERYDAY)

a. ENTER INTO DAILY.

SET UP HOUR, MINUTE AND SECOND BY PRESSING “REW/FF” FOR MOVING AND “PLAY/PAUSE” FOR SELECTION.

3. WEEKLY (PLAYBACK AT THE SAME TIME PER WEEK)

a. ENTER INTO WEEKLY.

SET UP HOUR, MINUTE AND SECOND BY PRESSING “REW/FF” FOR MOVING AND “PLAY/PAUSE” FOR SELECTION AND THEN SET UP AS SAME AS PROCEDURE OF DAILY.

- AFTER COMPLETING, “ALRAM” MARK WILL DISPLAY AND THEN IT WILL BE TRANSFERED TO INITIAL DISPLAY AND BLINKING NO.2 OR THE CHANNEL WHICH DOES NOT SET.

YOU CAN SET UP TO SAME FILE UP TO 10.

IF YOU WANT DELETE THE CHANNEL SET, PRESS “ERASE” BUTTON ON THE CHANNEL SETTING DISPLAY.

**※ CAUTION**

- RESEVATION MODE IS OPERATED IN VOICE AND FM MODES.
- IF DO NOT SETTING UP “SET DATE”, THIS MENU IS NOT DISPALYED.
- THE PASSED TIME CAN NOT BE SET UP.
- CHECK THE TIME AVAILABLE FOR RECORDING BEFORE DOEN THIS.
- IF THE SELECTED FOLDER IS FULL OR MEMORY FULL, IT WON’T WORK.  
(VOICE MODE: 128PCS EACH FOLDER / FM ENC: 256PCS)
- RESERVATION RECORDING IS FIRST THAN OTHER FUNCTIONS EXCEPTING RECORDING.



**ALARM PLAY** : THE FILE SELECTED PLAYS BACK ON TIME  
WHEN IS SET UP IN ADVANCE.  
(10PCS AVAILABLE)

**※ SET UP THE ALARM PLAY**

- THIS FUNCTION HAS DATE/DAILY/WEEKLY MODE.

1. DATE (1 TIME)

a. ENTER INTO DATE.

SET UP YEAR, MONTH, DAY BY PRESSING "REW/FF" FOR MOVING AND "PLAY/PAUSE" FOR SELECTION.

b. IF IT IS COMPLETED, AUTOMATICALLY DISPLAY TRANSFERS TO TIME SETTING DISPLAY.

TIME SETTING IS SAME AS THE PROCEDURE OF DATE.

2. DAILY (PLAYBACK AT THE SAME TIME EVERYDAY)

a. ENTER INTO DAILY.

SET UP HOUR, MINUTE AND SECOND BY PRESSING "REW/FF" FOR MOVING AND "PLAY/PAUSE" FOR SELECTION.

3. WEEKLY (PLAYBACK AT THE SAME TIME PER WEEK)

a. ENTER INTO WEEKLY.

SET UP HOUR, MINUTE AND SECOND BY PRESSING "REW/FF" FOR MOVING AND "PLAY/PAUSE" FOR SELECTION AND THEN SET UP AS SAME AS PROCEDURE OF DAILY.

- AFTER COMPLETING, "ALRAM" MARK WILL DISPLAY AND THEN IT WILL BE TRANSFERED TO INITIAL DISPLAY AND BLINKING NO.2 OR THE CHANNEL WHICH DOES NOT SET.

YOU CAN SET UP TO SAME FILE UP TO 10.

IF YOU WANT DELETE THE CHANNEL SET, PRESS "ERASE" BUTTON ON THE CHANNEL SETTING DISPLAY.

**※ CAUTION**

- IN ALRAM PLAY, ONLY THE FILE WHICH IS SET PLAYS AND THEN STOPS.

IN CASE OF FM MODE, THE STATION WHICH IS SET IS ON AIR WITH BLINKING ALRAM MARK.

- SETTING UP THE ALRAM PLAY CAN BE DONE UNDER ALL MODES IS STOPPED.

- IF DO NOT SET UP "SET DATE", IT WON'T WORK.

- IF YOU WANT TO SET UP THE PASSED TIME, IT WON'T WORK.


- IF IT IS TIME FOR RESERVATION RECORDING IN ALRAM PLAY, ALRAM PLAY WILL BE STOPPED.


- ALRAM PLAY IS OPERATED FIRST THAN OTHER FUNCTIONS EXCEPTING RECORDING.

④ **POWER OFF T** POWER OFF TIME : 1MIN, 3MIN, 5MIN, ALWAYS ON

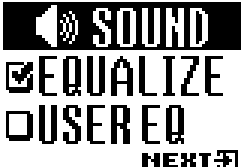


AUTOMATIC POWER OFF TIME

- ⑤ **SLEEP TIME** SLEEP TIME : OFF, 15MIN, 30MIN, 45MIN, 60MIN,  
 75MIN, 90MIN, 105MIN, 120MIN  
 AUTOMATICALLY TURN OFF AFTER THE TIME YOU SET UP.

- ⑥ **INTRO TIME** INTRO TIME : 5SEC, 10SEC, 15SEC  
 PLAYING FILE BACK FOR THE TIME YOU SET UP.

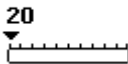
2. **SOUND**




THIS MENU HAS EQUALIZER, 3DS USER SETTING, DEFAULT VOLUME.

- ① **EQUALIZER** EQUALIZER : NORMAL, CLASSIC, POP, ROCK, JAZZ, LIVE  
 NORMAL  
 CLASSIC  
 YOU CAN SELECT THE EQUALIZER YOU WANT.

- ② **3DS USER SE** 3DS USER SETTING :  
 ON  
 OFF  
 BASS/TREBLE AT 1,3,5,7,9,11,13,15 STEP PER EACH  
 ADJUST THE 3D-SOUND EFFECT LEVEL.

- ③ **DEFAULT VO** DEFAULT VOLUME : 20~29, OFF  
 IF SET UP THIS FUNCTION, THE DEFAULT VOLUME IS ON AT THE  
 LEVEL AFTER TURN ON.

3. **DISPLAY**



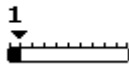
THIS MENU IS FOR SETTING UP DISPLAY AND CONSISTS OF FONT, ID3 TAG, SCROLL SPEED, BACKLIGHT TIME, LCD CONTRAST.

- ① **FONT** FONT: KOREAN, ENGLISH, JAPANESE, CHINESE(SIMPLIFY + TRADITIONAL),  
 KOREAN  
 ENGLISH  
 EUROPE  
 YOU CAN SELECT THE LANGUAGE YOU WANT FOR ID3 TAG ON.

- ② **ID3 TAG** ID3 TAG : ON, OFF  
 ON  
 OFF  
 DISPLAY FILE INFORMATION

1. ON : DISPLAY Title, Artist, Bit Rate, Frequency
2. OFF : DISPLAY NAME ONLY

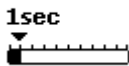
③ **SCROLL SPE** SCROLL SPEED : 0~10



SPEED CONTROL FOR FLOWING FILE INFORMATION ON THE LCD UP TO 10LEVEL.

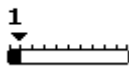
☞ EVEN IF SCROLL SPEED IS SET UP, FULL FILE INFORMATION IS ABLE TO DISPLAYED ON THE LCD, INFORMATION IS NOT FLOWING.

④ **BACKLIGHT** BACKLIGHT TIME : 0~10



TIME FOR BACKLIGHT ON AND OFF(OFF-9SEC)

⑤ **LCD CONTRA** LCD CONTRAST : 0~10



LEVEL FOR BRIGHTNESS OF LCD(1-10LEVEL)

4. **SYSTEM**



THIS IS FOR PLAYER'S SYSTEM CONTROL.

THIS CONSISTS OF REPEAT, SYNC, ARS, INPUT SELECTOR, MIC SENSITIVITY, RESUME, BITRATE, FM BAND, CONTINUE FOLDER, FORMAT, DEFAULT.

① **REPEAT** REPEAT : NORMAL, REPEAT ONE, REPEAT ONE ALL, REPEAT ALL, SHUFFLE



NORMAL: ALL FILES PLAY BACK IN SEQUENCE.

REPEAT ONE: ONLY CURRENT FILE PLAYS BACK ONE TIME.

REPEAT ONE ALL: ONLY CURRENT FILE PLAYS BACK REPEATEDLY

REPEAT ALL: ALL FILES PAY BACK REPEATEDLY

SHUFFLE: PLAY BACK RANDOMLY

② **SYNC** SYNC (ONLY IN LINE-IN RECORDING) : AUTO SYNC, OFF



- AUTO SYNC : IN RECORDING THE SOUND FROM EXTERNAL DEVICE THRU LINE-IN, CREATING NEW FILE WITH STAMPING FILE NAME BY RECOGNIZING AUTOMATICALLY THE END AND BEGINNING OF THE SONG.



- OFF : IN RECORDING THE SOUND FROM EXTERNAL DEVICE THRU LINE-IN, ALL SOUNDS OR SONGS ARE RECORDED INTO ONE FILE, IF YOU SEPARATE.

- ③ **ARS**  
**ON**  
**OFF** ARS : A, B, OFF
- IN RECORDING, IF THERE IS SOUND AT A WEAK SOUND FOR A CERTAIN TIME, RECORDING PAUSES AUTOMATICALLY FOR SAVING MEMORY, BUT IF THERE IS SOUND AT SPECIFIC LEVEL AGAIN, START RECORDING AGAIN.  
(AUTOMATIC RECORDING SYSTEM)
- A : ALL SOUNDS ARE RECORDED INTO ONE FILE.
  - B : THE SOUND AFTER PAUSING FOR 5 SECONDS, AUTOMATICALLY IT HAS ITS OWN INDEX.

- ④ **INPUT SELE**  
 **LINE-IN**  
 **INTERNAL**  
NEXT INPUT SELECTOR : LINE-IN / INTERNAL-MIC / EXTERNAL-MIC
- IN RECORDING, SELECT THE RECORDING METHOD.

- MIC SENSIT**
- ⑤ **Low**  
**High** MIC SENSITIVITY : LOW, HIGH
- SET UP THE SENSITIVENESS OF MICROPHONE.

- ⑥ **RESUME**  
**ON**  
**OFF** RESUME : ON, OFF
- WHEN TURNNING ON AGAIN, THE SET RETURNS TO ITS CONDITION BEFORE TURNNING OFF.
- FOR SETTING, PRESS "PAUSE" BUTTON IN PLAYING BACK AND THEN PRESS "PLAY/PAUSE" FOR 2-3SECONDS.

- ON : PALYING BACK FROM THE COUNTER WHERE IT STOPPED AT THE LAST.
- OFF : PALYING BACK FROM THE INDEX WHERE IT STOPPED AT THE LAST.

- ⑦ **BIT RATE**  
**VOICE**  
**MP3** BIT RATE : VOICE BITRATE, MP3 BITRATE
- SET UP THE BIT RATE IN VOICE RECORDING, LINE IN AND FM RECORDING.
- VOICE RECORDING : SHQ(32Kbps), HQ(16Kbps), SP(8Kbps)
  - MP3 ENCODE : 48Kbps, 64Kbps, 96Kbps, 128Kbps, 192Kbps, 256Kbps

- ⑧ **FM BAND**  
 **WORLD**  
 **JAPAN**  
NEXT FM BAND : WORLD, JAPAN, EUROPE
- YOU CAN SELECT FM BAND YOU WANT.

1. WORLD: 87.50MHz ~ 108.00MHz, 100KHz STEP
  2. JAPAN: 76.00MHz ~ 108.00MHz, 100KHz STEP
  3. EUR: 87.50MHz ~ 108.00MHz, 50KHz STEP
- (DEFAULT: 87.50MHz)

⑨ **CONTINUE F**  
**ON**  
**OFF** CONTINUE FOLDER : ON, OFF  
IT WORKS IN VOICE MODE RECORDING.

- ON : IF INDEX RECORDED(128PCS) IS FULL FOR A FOLDER, AUTOMATICALLY MOVE TO NEXT FOLDER AND RECORDING CONTINUOUSLY.
- OFF : IF INDEX RECORDED(128PCS) IS FULL FOR A FOLDER, STOP RECORDING AND DISPLAY "INDEX FULL" ON THE LCD.

⑩ **FORMAT**  
**YES**  
**NO** FORMAT : YES, NO  
FORMAT ALL DATA RECORDED ON MEMORY.

⑪ **DEFAULT**  
**YES**  
**NO** DEFAULT : YES, NO  
INITIALIZE ALL SETTING AND RETURN TO DEFAULT.

# Setting PC Environment

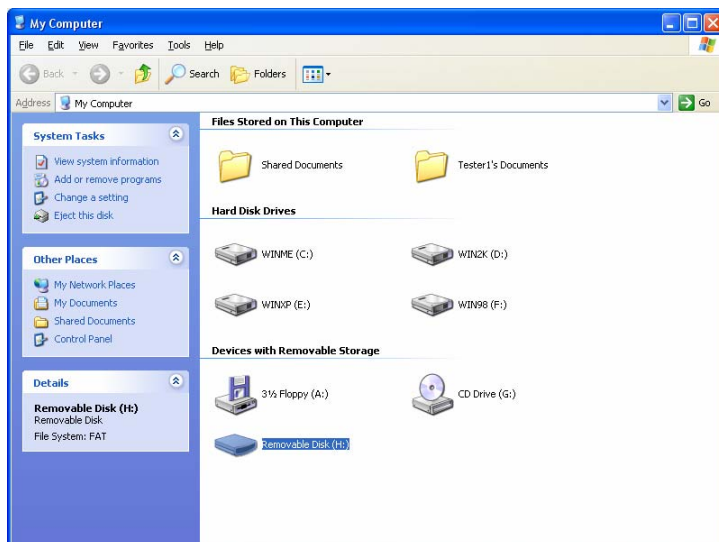
It supports USB Mass Storage and it can be used as hard drive. It can be connected to PC directly without any application by Plug & play method on Window Me, 2000, XP except for Windows 98SE.

☞ How to install Drive

(1) In case of WIDOWS ME, 2000, XP

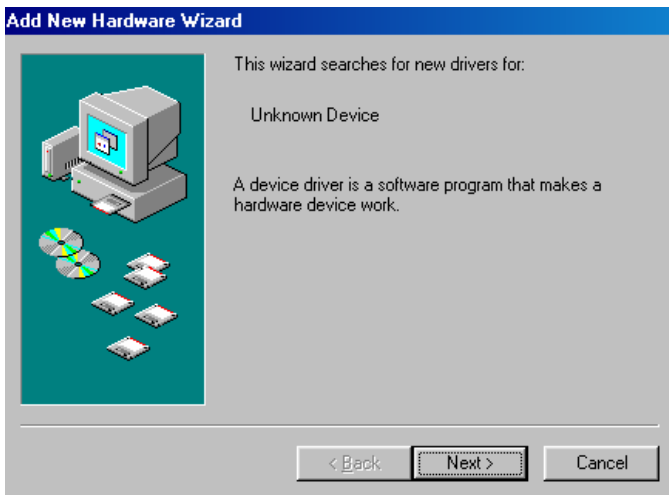
When connecting device to PC by USB port, “new hardware detected” is shown and installation begins automatically.

\* If you click [My Computer], the set is recognized as a portable disk (F:) on [My Computer] window. (\*WINDOWS XP).

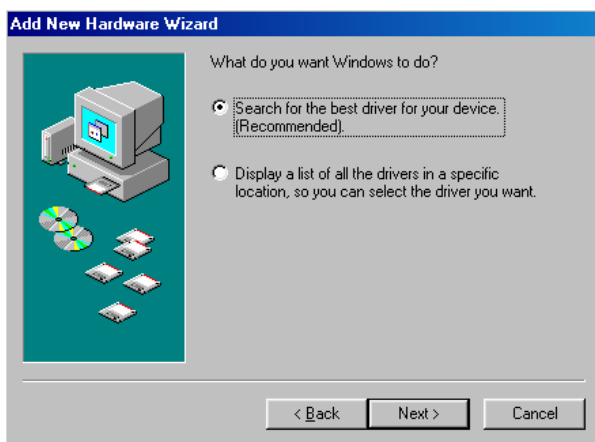


(2) In case of WINDOW 98 SE

① Connect device to USB port. Click 'next'.



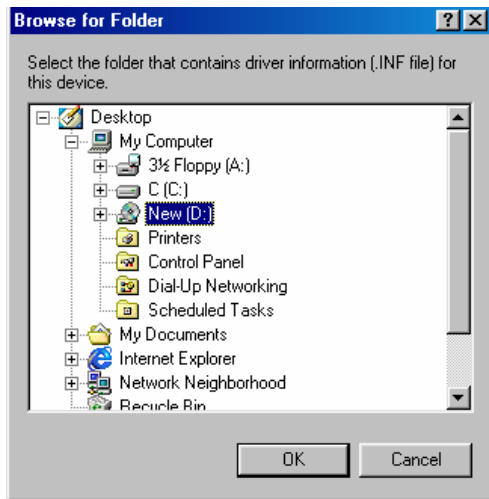
② Check 'Find appropriate driver ' and click 'next'.



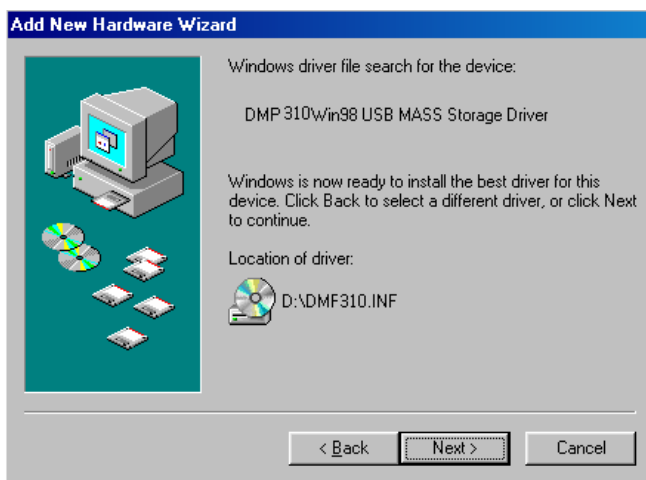
③ Check 'designating location' and click [Retrieval] button.



④ Find installation program on [Folder Retrieval] window.



⑤ Click 'next' on [New hardware wizard] window.

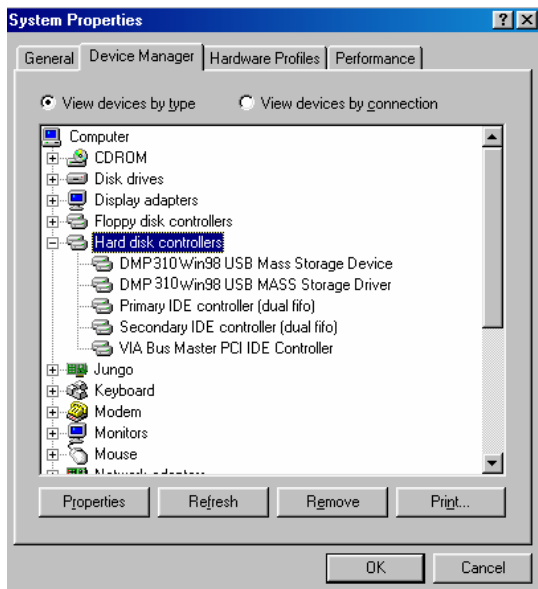


⑥ Below window is shown when installation is completed.



⑦ Check finally whether installation has been completed successfully.

[My Computer]-[Control Panel]-[System]-[Device Manager]-[Hard Disk Controller]



- When installation is completed successfully, it is recognized as USB Mass Storage on Device Manager of My computer.  
( In case of WINDOWS ME, it is normal even though '?' mark is shown.)

## Recording in RECORD Mode

### (1) RECORDING METHOD

THE SET HAS 4 WAYS TO RECORD AS BELOW.

- 1) RECORDING THRU INTERNAL MIC: PRESS "MENU" BUTTON  
SELECT "INTERNAL-MIC" ON SYSTEM/INPUT SELECTOR.  
PRESS "REC"
- 2) RECORDING THRU EXTERNAL MIC: PLUG EXTERNAL MIC INTO LINE IN JACK.  
SELECT EXTERNAL MIC ON SYSTEM/INPUT SELECTOR.  
PRESS "REC"
- 3) RECORDING THRU LINE IN FROM EXTERNAL DEVICE: REFER TO "CONNECTING EXTERNAL DEVICE"
- 4) RECORDING FM RADIO: REFER TO "FM RECORDING".

### (2) MAIN FEATURES

- 1) MONITORING RECORDING STATUS  
IN RECORDING, YOU CAN CHECK WHAT IS RECORDING THRU EARPHONE.
  - 2) CHECK REMAINING TIME TO BE ABLE TO RECORD  
YOU CAN CHECK THE REMAINING TIME BY PRESSING "MENU" BUTTON IN RECORDING.
  - 3) SEPARATING FILE IN RECORDING  
YOU CAN SEPARATE FROM THE CURRENT RECORDING FILE RECORDED OVER 5 SECONDS BY PRESSING "FF" BUTTON IN RECORDING AND CREATING NEW INDEX.
- ☞ IF THERE IS NO ENOUGH SPACE FOR RECORDING, THE FUNCTION WON'T WORK.  
IF RECORDING TIME IS FULL, "MEMORY FULL" IS DISPLAYED.  
UP TO 256PCS AVAIABLE FOR RECORDING.  
IN RECORDING, BACKLIGHT WON'T WORK.

## CONNECTING EXTERNAL DEVICE

### (1) RECORDING FROM EXTERNAL DEVICE OR SET

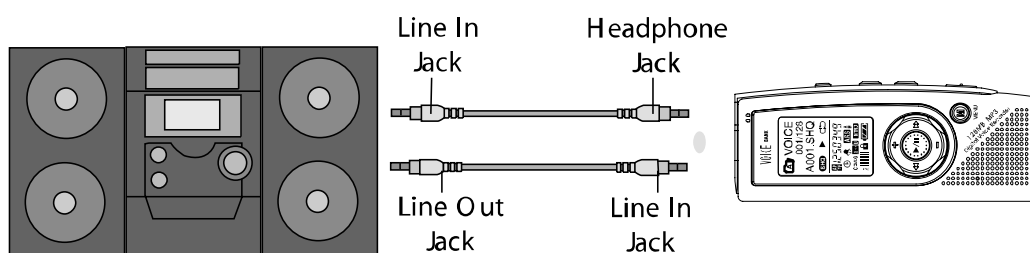
WHEN CONNECT EXTERNAL DEVICE TO SET, AUTOMATICALLY MODE TRANSFERS TO "LINE IN".

#### 1) RECORDING EXTERNAL DEVICE TO DDR-5000

CONNECT THE PROVIDED AUDIO CABLE TO LINE IN JACK ON THE SET.

#### 2) RECORDING DDR-5000 TO EXTERNAL DEVICE

CONNECT THE PROVIDED AUDIO CABLE TO EARPHONE JACK ON THE SET AND MICROPHONE OR LINE IN ON THE EXTERNAL DEVICE.



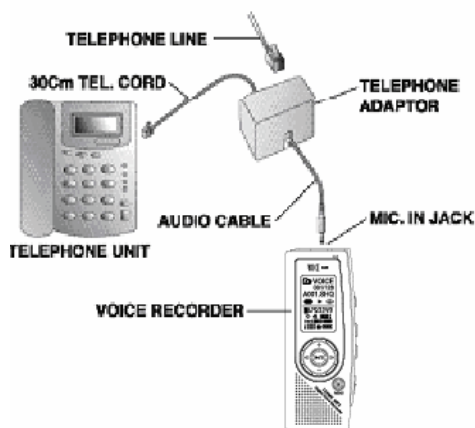
☞ WHEN CONNECTING EXTERNAL DEVICE, TURN OFF THE DEVICE AND SET.

READ AN EXTERNAL DEVICE'S MANUAL YOU WOULD LIKE TO CONNECT WITH ENOUGH TIME AND CAREFUL.

WHEN RECORDING FROM EXTERNLA DEVICE TO SET, VOLUME DOWN THE EXTERNAL DEVICE.

WHEN RECORDING FROM SET TO EXTERNAL DEVICE, SET THE VOLUME OF THE SET AT THE MIDDLE.

### (2) RECORDING FROM TELEPHONE AND MOBILE PHONE



CONNECT LINE-IN CABLE TO THE MICROPHONE JACK ON THE VOICE RECORDER AND TELEPHONE ADAPTOR. CONNECT TELEPHONE CABLE TO TELEPHONE ADAPTOR. PRESS "REC" BUTTON FOR RECORDING. IF YOU SET UP THE "ARS", AUTOMATICALLY START RECORDING AND PAUSING ACCORDING TO THE SOUND LEVEL.





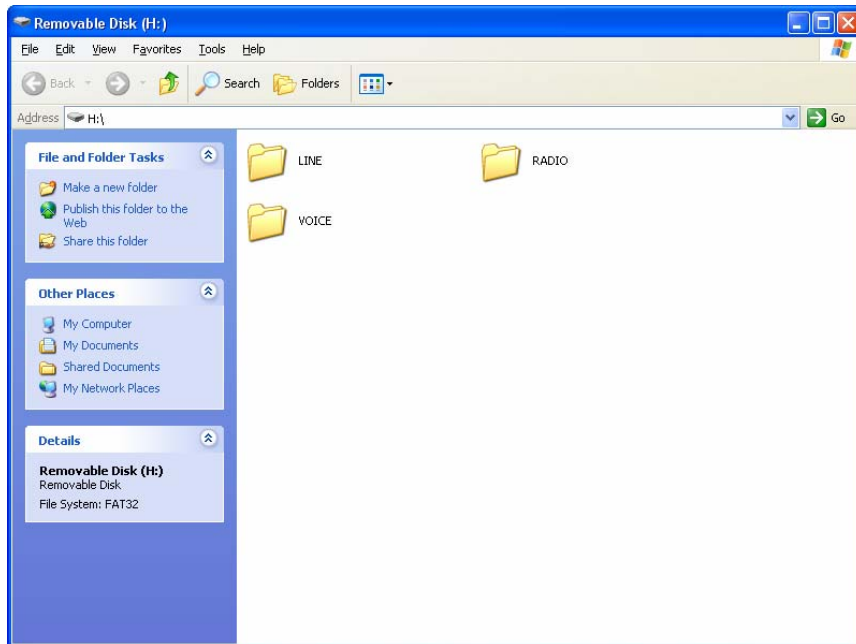
CONNECT “CELLULAR EAR MICROPHONE” ONTO EXTERNAL MICROPHONE ON THE SET AND EARPHONE JACK ON THE MOBILE PHONE.

☞ CELLULAR EAR MICROPHONE IS OPTIONAL ITEM AND YOU MAY ASK RETAILER THAT YOU CAN PURCHASE.

IF YOU CELLULAR IS NOKIA BRAND, YOU MUST CHECK “CELLULAR EAR MICROPHONE” IS COMPATIBLE OR NOT.

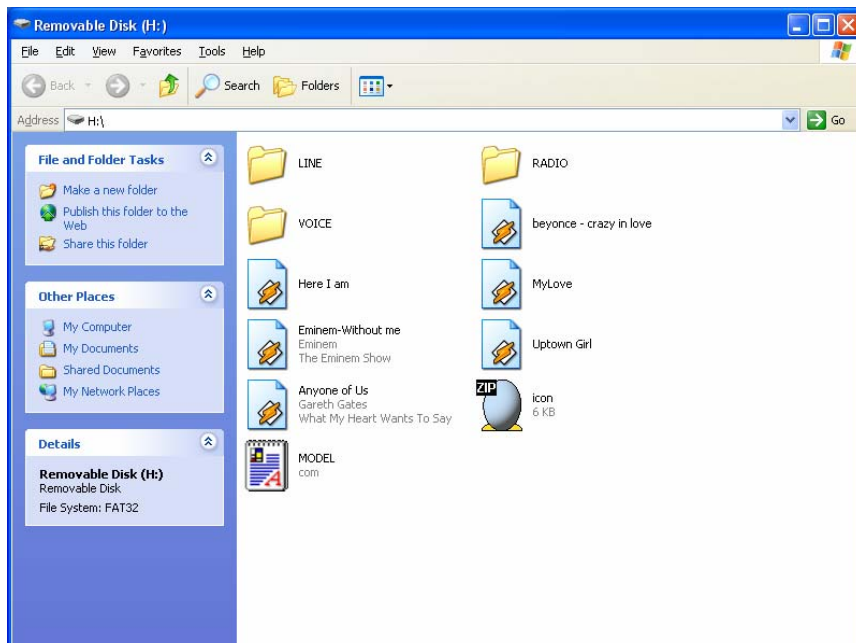
# Managing Folders and Files

## (1) Default folders



- ◆ When you connect the unit to PC, you can find that the LINE, RADIO and VOICE folders are created by default.

## (2) AUDIO MODE

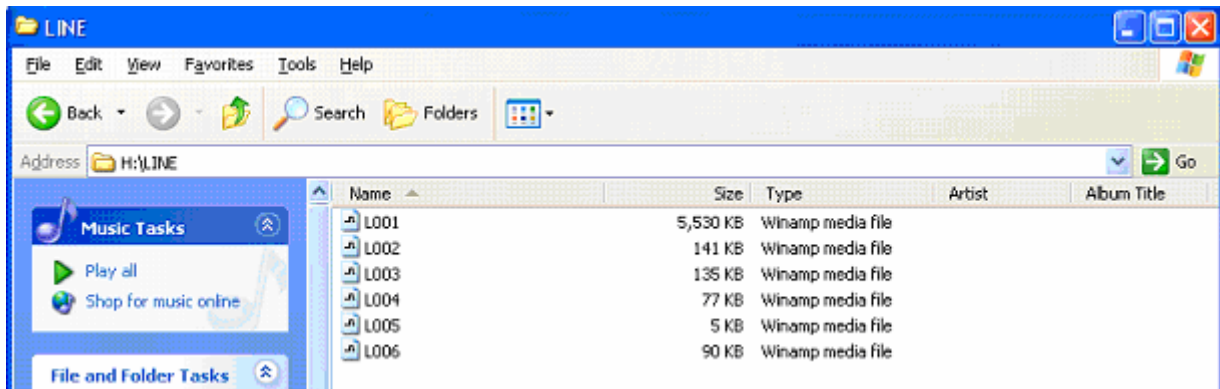


- ◆ No folder is created by default for AUDIO MODE.  
You can create the audio folders on the PC, and check the folders with FOLDER PLAY and MUSIC PLAY on the MP3 Player.
- ◆ You can create up to 999 music files (MP3 or WMA files) on MUSIC PLAY, and up to 512 folders on

FOLDER PLAY.

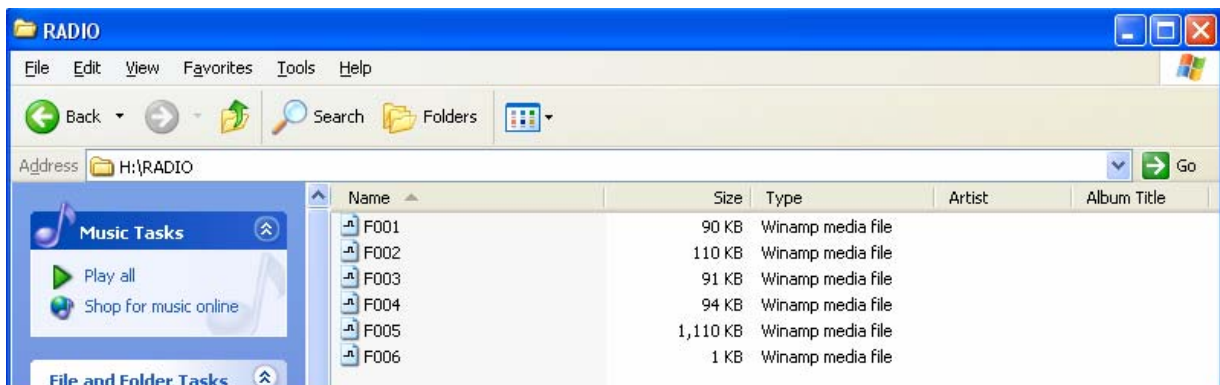
\*\* FOLDER PLAY in the MODE menu shows the folders you created, and MUSIC PLAY shows the music files within the folder.

(3) LINE IN MODE



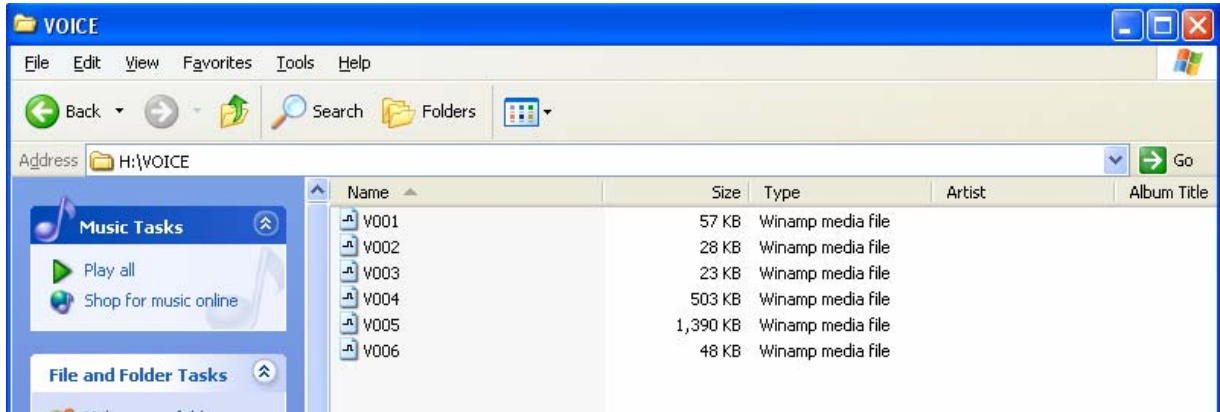
- ◆ LINE IN MODE contains the files recorded from external devices through the line-in cable.
- ◆ When recording data, up to 256 files can be created in sequence. If the number of files exceeds 256, the “INDEX FULL” message is displayed.

(4) RADIO MODE



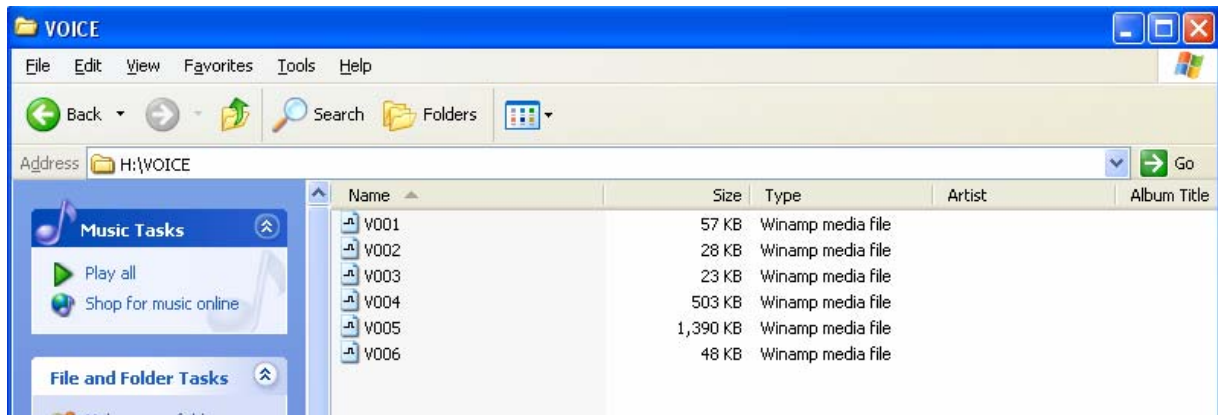
- ◆ RADIO MODE contains the files recorded from the radio.
- ◆ When recording data, up to 256 files can be created in sequence. If the number of files exceeds 256, the “INDEX FULL” message is displayed.

(5) VOICE MODE

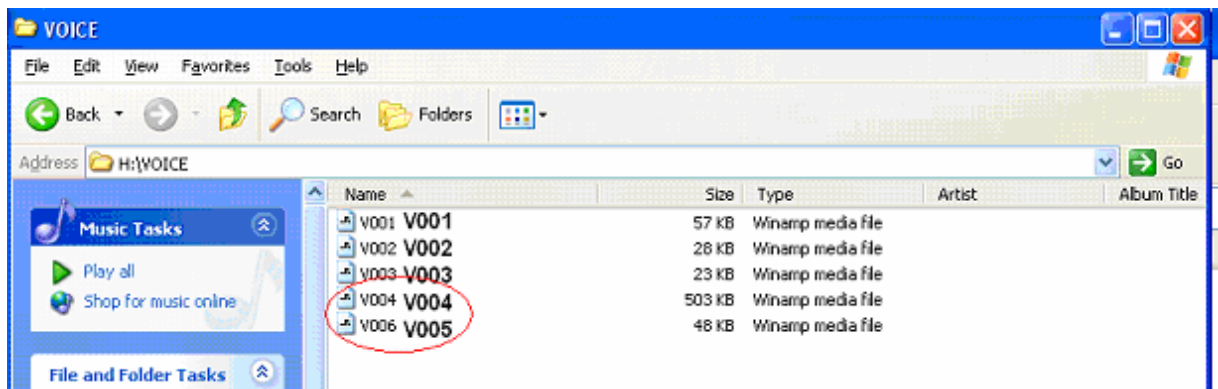


- ◆ VOICE MODE contains the voice recording files.
- ◆ When recording data, up to 256 files can be created in sequence. If the number of files exceeds 256, the "INDEX FULL" message is displayed.

♠ Deleting files in the LINE, RADIO and VOICE MODE ♠



- ◆ Deleting VOICE005.



As V005 is deleted, V006 is renamed to "V005".

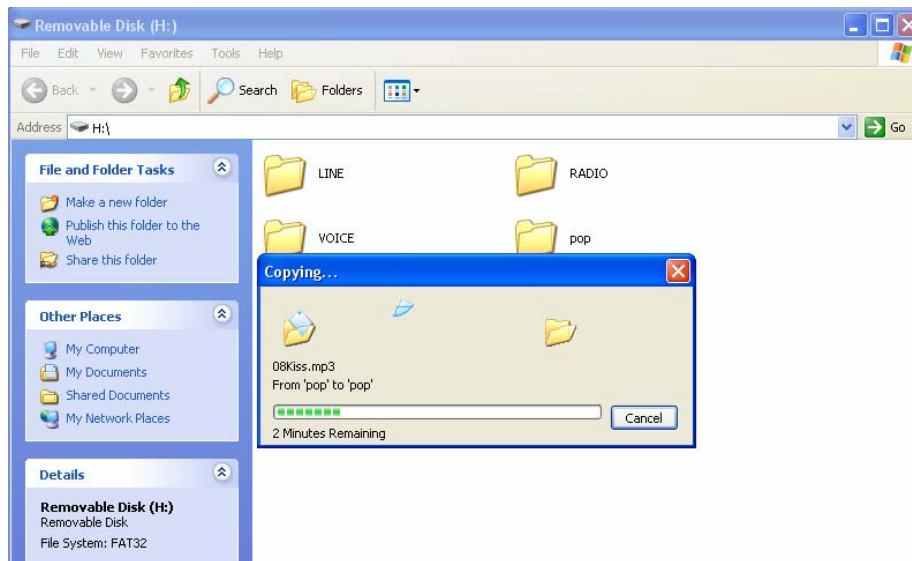
# Downloading Files

- (1) Wait until 'new hardware detect' and 'it is ready to operate' appears after connecting device to USB port.

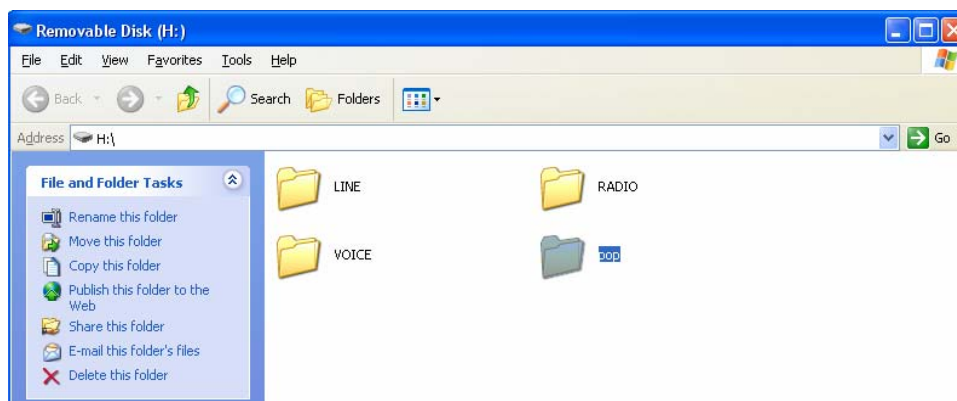


- (2) Click **Removable Disk (E:)** on My Computer.

- (3) Copy music files or data from PC folder and download them to device.



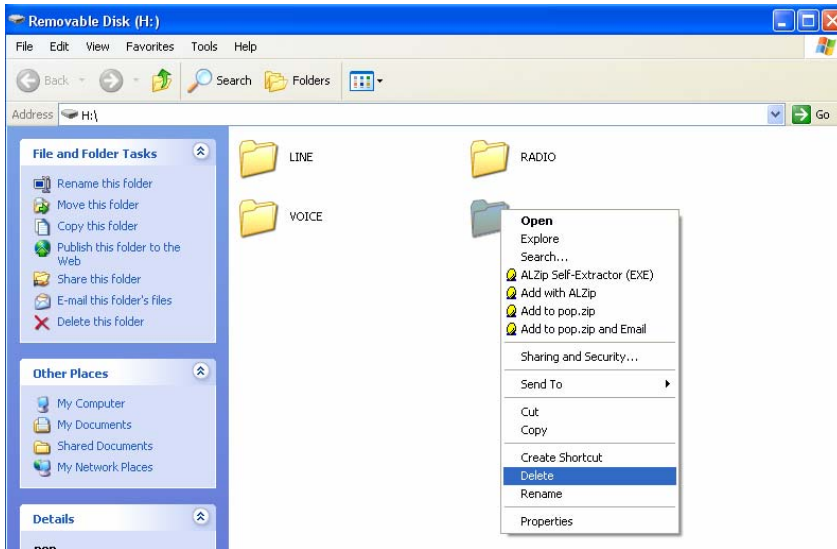
- (4) Following folder is created.



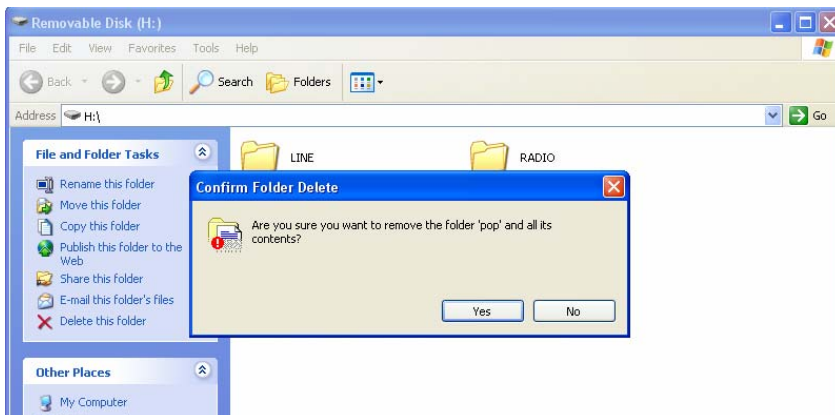
# Deleting Files

## (1) Deleting on PC

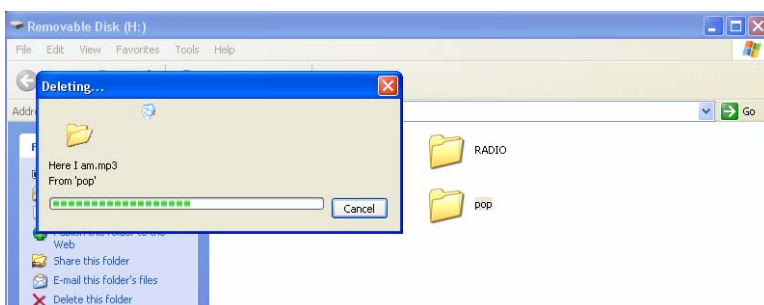
① Click file which you try to delete and click right button of mouse. Then following toolbar appears.



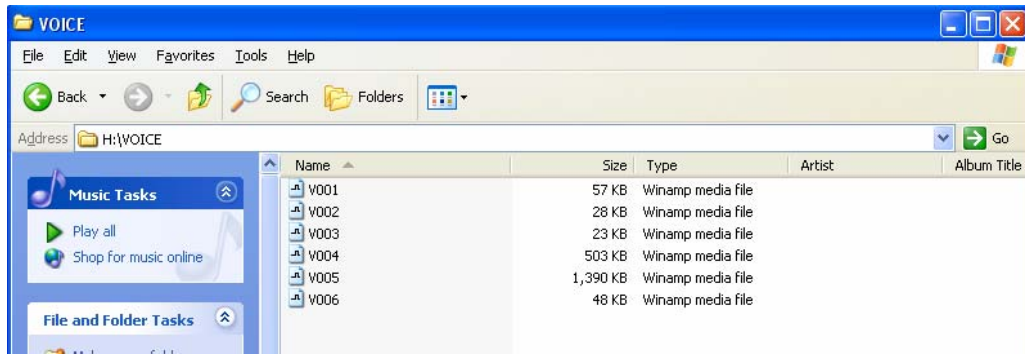
② Click 'Yes'.



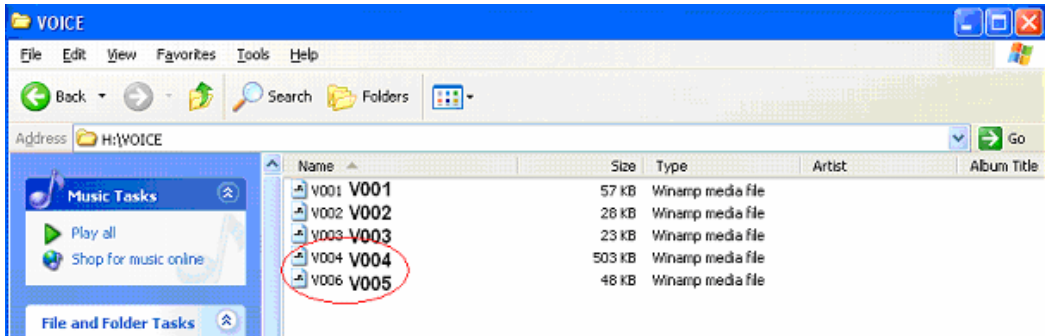
③ It indicates the status of deleting.



 Deleting on LINE, RADIO, VOICE MODE



◆ In case of deleting VOICE005

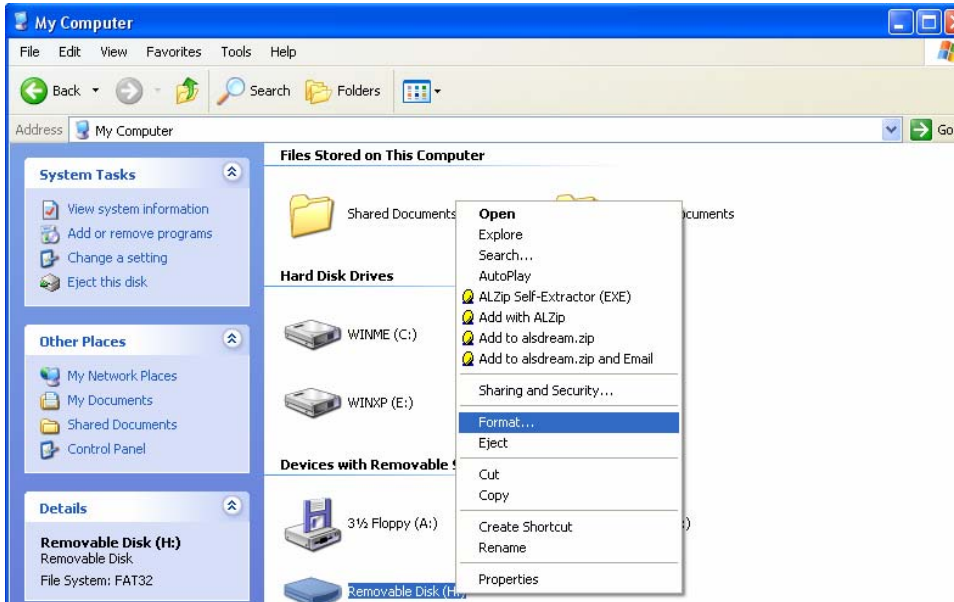


V005 is deleted, V006 is renamed to "V005".

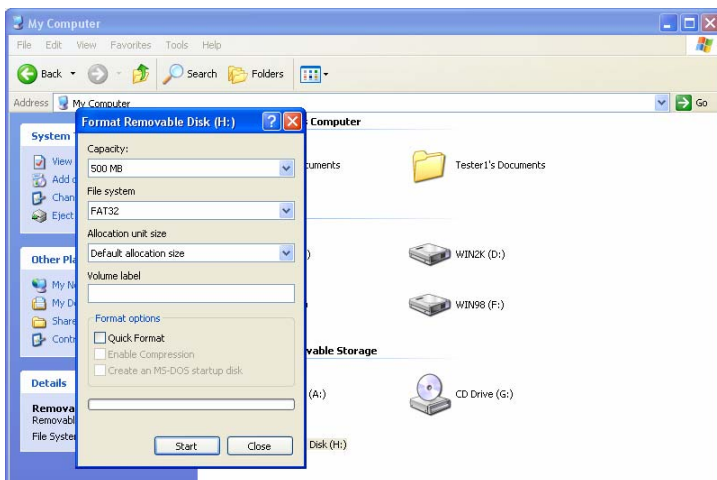
# FORMATTING File

(1) FORMAT on PC

① Go to [My Computer], choose portable disk(F:) and click right button of mouse. Following toolbar appears. At the time, click format.

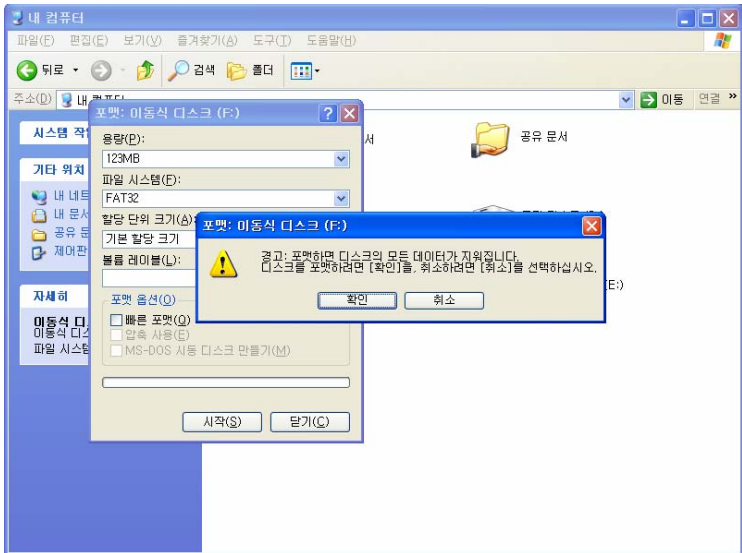


② Click 'start' when following window appears.

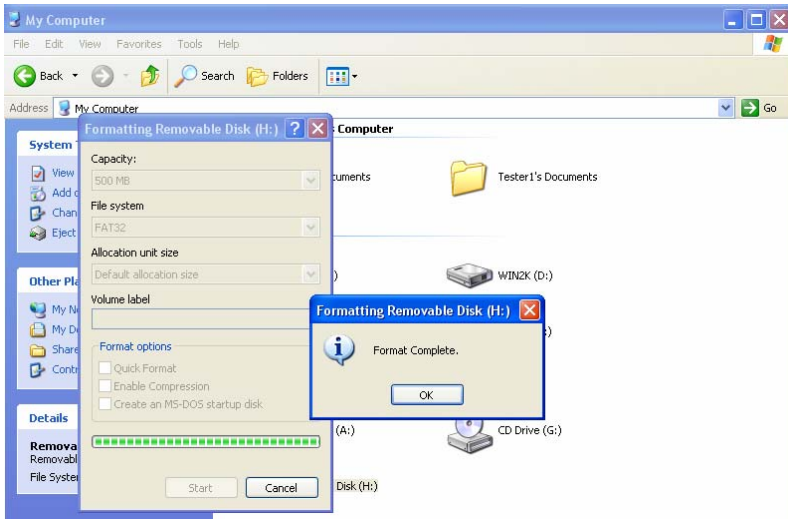


③ Click 'confirm'.



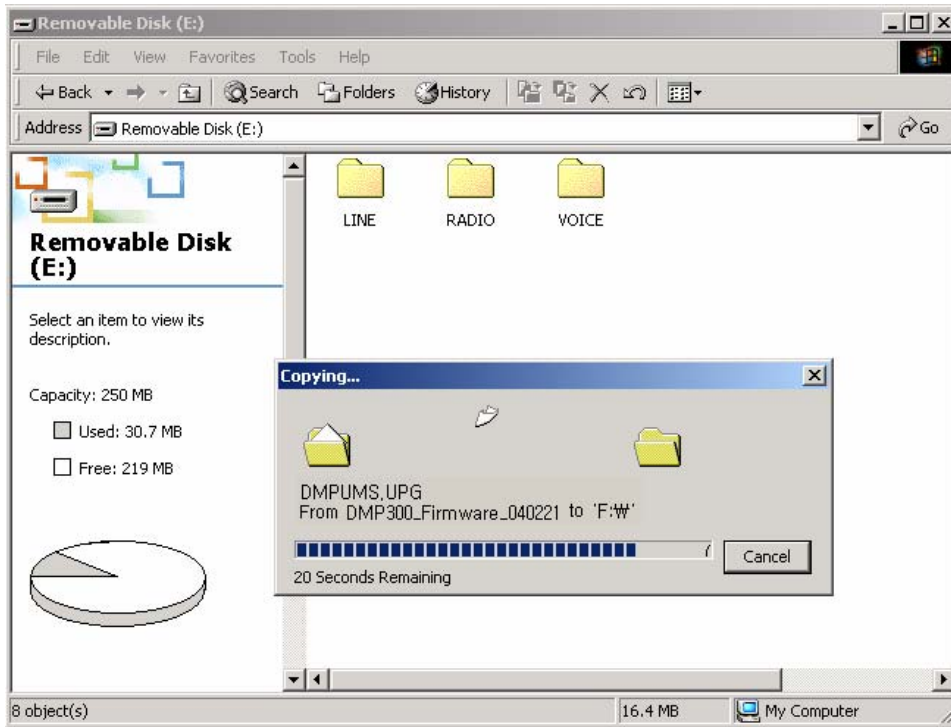


④ Format is completed.



# FIRMWARE

This device has the feature which is to improve function and correct error by upgrading firmware. You can download upgrade file by connecting to website. Firmware upgrade can be operated when you copy firmware file to root of device which is connected to PC.



After completed upgrading, set turn off automatically.

# ICON

## 1. POWER ON

### 1) DISPLAY

#### ① ANIMATION



#### ② MEMORY INFORMATION

**TOTAL MEM:  
128MB  
USED MEM:  
19MB**

#### ③ FIRMWARE VERSION

**F/W VER:  
1.0.0.8**

### 2) ETC

#### ① HOLD ON



#### ② NEED TO CHARGE BATTERY



#### ③ CONNECTING USB



## 2. POWER OFF

### 1) DISPLAY

#### ① ANIMATION



### 3. USB CONNECTION

#### 1) FIRMWARE UPGRADE

**S/W UPGRADE  
WRITING %**

#### 2) DISPLAY

##### ① USB DOWNLOAD






##### ② USB UPLOAD



### 4. OTHER ICONS

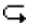
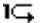
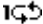
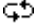

#### ① BIT RATE

##### (1) VOICE




- a. SP 
- b. HQ 
- c. SHQ 

- (2) MP3      

#### ② REPEAT

- (1) NORMAL 
- (2) REPEAT ONE 
- (3) REPEAT ONE ALL 
- (4) REPEAT ALL 
- (5) SHUFFLE 

#### ③ PLAY SPEED

- (1) STANDARD 
- (2) SLOW 
- (3) FAST 

#### ④ VOLUME

VOLUME 0 ~ 30



⑤ EQUALIZER

- (1) NORMAL **NOR**
- (2) CLASSIC **CLA**
- (3) POP **POP**
- (4) ROCK **ROCK**
- (5) JAZZ **JAZ**
- (6) LIVE **LIV**

⑥ KEY

- (1) PLAY ▶
- (2) PAUSE ||
- (3) REW (REWIND) ◀◀
- (4) FF (FAST FORWARD) ▶▶
- (5) REC (RECORD) ● REC
- (6) STOP ■

⑦ SYNC **SYNC**

⑧ POP-UP

- (1) PAUSE **PAUSE**
- (2) INDEX FULL **INDEX FULL**
- (3) MEMORY FULL **MEMORY FULL**
- (4) ERASE **1 FILE ERASE** **1 FOLDER ERASE** **ALL FOLDER ERASE**

## General Specification

MODEL		DDR-5000R with 256MB
VOICE RECORD	RECORDING TIME	SHQ(1060min)/HQ(2120min)/SP(4240min)
	RECORDING MODE	MP3 FORMAT : SHQ(32Kbps) / HQ(16Kbps) / SP(8Kbps)
	FOLDER	A/B/C/D/E/F/G/H (8 FOLDER) Total 1024 Messages with 8 Separate Folder (128 Messages in Each Folder)
	ARS	Automatic Recording System (A-TYPE: ONE INDEX, B-TYPE: +INDEX)
	FM RECORDING	World Wide FM band / Japen FM band / Europe FM band
	EX-MIC	Pin Mic
	MEMORY TYPE	Built-in Flash Memory (64MB/128MB/256MB/512MB/1GB)
	S/N	60dB (62dB input 1Khz, speaker output 50mW: SHQ mode)
	DISTORTION	1.5%±0.2 (62dB input 1KHz , speaker output 50mW : SHQ mode )
	REQUENCY RESPONSE	300Hz ~ 4.0KHz (-6dB)
	OUTPUT	Max 80mW(speaker 8ohm)
	REPEAT MODE	Normal/ One/One repeat/All/Shurff/A↔B repeat
	RECODING MDOE	One messages / all messages in file
	INTRO PLAY	5/10/15 sec in each messages
	SEARCHING	Easy file search & messages search
	ALRAM PLAY	10 program (Date / weekly(sun/mon/tue/wed/thu/fri/sat) / daily)
TIMER RECORDING	10 program (Date / weekly(sun/mon/tue/wed/thu/fri/sat) / daily)	
FM RADIO	S/N	60dB at 1mv 98.1MHz
	DISTORTION	0.8%(max) at 1mv 98.1MHz Δf=22.5KHz
	FREQUENCY RESPONSE	350Hz±30Hz, 3KHz±0.25KHz(100Hz~10KHz, 60dBuV)
	OUTPUT	Max 80mW (speaker 8ohm)
	FREQUENCY RANGE	World Standards : 87.5 ~ 108MHz(100Hz step) Europe Standards : 87.5 ~ 108MHz(50Hz step) Japan Standards : 76 ~ 108MHz(100Hz step)
MP3	BIT RATE	MP3 FORMAT : (256/192/128/96/64/48Kbps)
	S/N	70dB up (1KHz input 0dB)
	DISTORTION	0.3%±0.05 (1KHz input 0dB)
	FREQUENCY RESPONSE	20Hz~20KHz
	OUTPUT EARPHONE	Max 5mW (16ohm)
	EQ	EQ : Normal / Classic / Live / Pop / Rock / Jazz
	INTRO PLAY	5/10/15 sec in each track