



User Manual

Hard Disk-type MP3 Player

DHD-1000

Thank you for purchasing Hard disk-type MP3 Player of
DIASONIC Technology.

- **Please read this manual before using the product.**

Preface

Thank you for purchasing DIASONIC DHD-1000.

Please read this manual before using the product.

In case a breakdown occurs, contact the service center at (82)-31-4740852.

Notes:

- Do not repair, disassemble, or remodel the product.
- Incorrect use of the product by the user or a third party or static electricity or electric shock loaded on the product may cause loss or change of the data saved in the product during repair services or replacement of the battery.
We recommend you to write down important information on paper.
- DIASONIC Technology is not responsible for damage caused by change or loss of the data in the product.
- Do not heat up or short the main body or the battery.
- Do not put the battery on a hot item or disassemble the battery in a high-temperature place.
Toxic contents of the battery may harm user's eyes or skin.
- In case the contents of the battery leaks and is exposed to the user, wash the exposed body part with clean water and see the doctor.
- Do not soak the device in water or leave it in a humid place.
- Contents of the user manual are subject to change without prior notice for performance improvement.

Copyrights

- DIASONIC Technology has all copyrights of this user manual.
- Reproduction, distribution, and commercial use of a part of or the entire user manual without prior consent of DIASONIC Technology are strictly prohibited by laws.
- All information contained in this manual has been carefully studied and written and is subject to change without prior notice for functional and performance improvement. DIASONIC Technology will not take any responsibility for matters arising due to differences between the product and information contained user manual.
- Use of MP3 files is prohibited for other than personal purposes like commercial or service purposes. Servicing MP3 files or providing MP3 files for commercial purposes will be against the copyright law of Korea.
- Reproduction of files is prohibited for other than personal purposes by law.

MIC User Notice for Level B Device (IT Device for Home Users)

This device has been developed for home users and passed the electromagnetic interference test. This device can be used in residential areas and other places.

Safety Notes

Warning

- When the LCD is broken, do not touch liquid from the LCD.
If your eyes have contacted the liquid, wash your eyes with clean water and see the doctor.
- Before charging the product, please thoroughly read the user manual.
- Before using the product, please thoroughly read the user manual.

Earphone-related Warning

For Traffic Safety

- Do not wear earphones while riding bicycle or motor cycle or driving a car.
It may cause dangerous situation and can be illegal in some countries.
Listening to music at a loud volume while crossing the road is especially dangerous.

For Protection of Hearing Ability

- Do not use earphones at a loud volume.
Doctors say listening to music at a loud volume for a long time is harmful for your hearing ability.
- When you hear echo sound in your ears while using earphones, immediately lower the volume or stop using the earphones.

FCC Information

This device complies with Part 15 of the FCC Rules. Operation is subject to the following two conditions:

- (1) This Device may not cause harmful interface, and
- (2) This device must accept any interference received, including interference that may cause undesired operation.

Note: This equipment has been tested and found to comply with the limits for CLASS B digital device, pursuant to Part 15 of FCC Rules. These limits are designed to provide reasonable protection against harmful interference when the equipment is operated in a commercial environment. This equipment generates, uses and can radiate radio frequency energy and, if not installed and used in accordance with the instructions, may cause harmful interference to radio communications. However, there is no guarantee that interference will not occur in a particular installation. If this equipment does cause harmful interference to radio or television reception, which can be determined by turning the equipment off and on, the user is encouraged to try correct the interference by one or more of the following measures:

- 1.1. Reorient or relocate the receiving antenna.
- 1.2. Increase the separation between the equipment and receiver.
- 1.3. Connect the equipment into an outlet on a circuit different from that to which receiver is connected.
- 1.4. Consult the dealer or experienced radio/TV technician for help.

WARNING

Changes or modifications not expressly approved by the manufacturer could void the user's authority operate the equipment.

Table of Contents

6	Operational Notes
8	Functions and Features
9	Parts and Components
12	Basic Operation
14	Button Manipulation
18	FM Radio Reception
19	Mode Menu
22	Main Menu
29	Recording
30	Connecting External Devices
31	Installing Drivers and Uninstalling Devices
33	Connecting to the PC
34	Management of Folder and File
36	Firmware Upgrade
37	Troubleshooting
38	Specification

TTS, Media SYNC

Operational Notes

General Operational Notes

Do not leave the device under direct sun rays or near a heating device. This product is equipped with **Li-polymer** battery and the product may explode when exposed to heat.

Do not leave the device in a humid, dusty place such as a bathroom.

When over-heating is suspected during charging, remove the device from the charger. Leaving the device in the charger for a long time can cause overheating that will result in fire.

Do not drop the device or give strong shock to the device. Otherwise, a breakdown may occur.

Keep the device away from a place with severe vibration or a strong magnet. (Music-playing might be interfered.)

Incorrect use of the device by the user or a third-party, or static electricity and electric shock loaded to the device may cause change or loss of the data during repair or replacement of the battery.

Do not repair, disassemble, or remodel the product. In this case, the product will not be subject to free repair services.

Do not forcefully bend the power cord or put a heavy item on the power cord.

Touch the power plug only with dry hands. (Otherwise, an electric shock may occur.)

Disconnect the power plug during thunder and lightning. (Otherwise, a fire may occur.)

- Do not put excessive load on LCD. Otherwise, the LCD may be damaged or display defects may occur.
- Do not put an item with liquid contents such as cups, cosmetic bottles, or medicines on the player. (Otherwise, a breakdown may occur.)
- Do not spray water in each part of the player when cleaning the player. Use dry cloth when cleaning the player.
- Chemicals and detergent will damage and discolor the surface of the player. Never use these agents.
- Do not use the player in a place where use of electronic devices is banned.
- Do not use the player while driving.
- Do not connect several power plugs to the same outlet.
- For safety, use the adapter provided with the player.

Notes on Using HDD

We recommend users to back up important data. DIASONIC Technology will not be responsible for data loss during repair services

Shocks given to the player while the player is being connected to the PC or the reading the HDD can severely damage the HDD. Free repair service may be provided depending on the damage degree.

Keep the player away from objects with a strong magnetic field like magnets. Otherwise, the HDD may malfunction or data loss may occur..

When disconnecting the player from the PC, use "Safely Remove Hardware" or "Remove or Eject Hardware" function.

- Sudden disconnection of the player from the PC while the HDD of the player is operating may cause malfunctioning of the HDD or data loss. Please check that the HDD is not running before disconnecting the player from the PC.

Notes on Using Host Function



Functions and Features

- **Excellent sound quality**

Provides the best sound quality with **10mW** of high output, less than 0.1% of distortion rate, and -90dB of minimum noise.

- **1.8" color LCD supporting 65,000 colors**

- **USB host function to copy data without passing through the PC**

Supports USB Host function to transmit data from other USB devices and back up data saved in the digital camera or portable storage.

- **Supporting UMS-type USB 2.0 and USB 1.1**

Connects to the PC without installation of special driver.

Supports USB 2.0 interface and 480Mbps of the maximum rate.

Perfectly compatible with USB 1.1.

- **High-capacity HDD**

Supports high-capacity HDD so that the user can save large-sized data, photos, documents, and music files.

- **Media SYNC function (with lyrics)**

MP3 player displaying lyrics

When an LRC file with lyrics is played, the lyrics are also displayed.

- **Image and text viewer**

The user can view images and text on the player.

The user can receive data from the digital camera through USB Host function and view received images and photos on the player.

The user can view any text file such as lyrics or novels on the player in any place at any time.

- **3D sound**

High-quality magnificent sound effect thanks to SRS WOW effects

SRS and TruBass feature that is to complement middle and low tones are provided so that the player can provide the best-quality sound.

- **FM radio**

Convenient features – automatic FM radio channel selection, FM radio recording, and frequency memory.

The user can listen to FM radio at the best quality thanks to the advanced setting features in any place at any time.

- **Voice recording and direct encoding**

The player is equipped with high-performance microphone and provides bitrate-adjusting feature so that the user can record the voice at the best quality.

The user can also encode data saved in an external device into an MP3 file through the line-in cable.

With SYNC, the user can encode each title.

- **Supporting various formats**

The player supports not only MP3 format but also other formats – WMA and OGG.

- **Bookmark and WINAMP play list**

The user can produce and edit his/her own play list with Bookmark function.

The user can quickly replay songs contained in the play list edited in WINAMP (**M3U**).

- **USB charging**

The user only needs to connect the USB port for charging.

- **Wireless/Wired Remote Controller**

The user can control the player with wired/wireless remote controllers in any place.

- **Various features**

Various features are supported – Repeat, Adjust Playing Speed, Intro, Multi-language, and ID3 Tag.

Supports Repeat, Equalizer, Firmware Upgrade features.

Parts and Components

Main Body

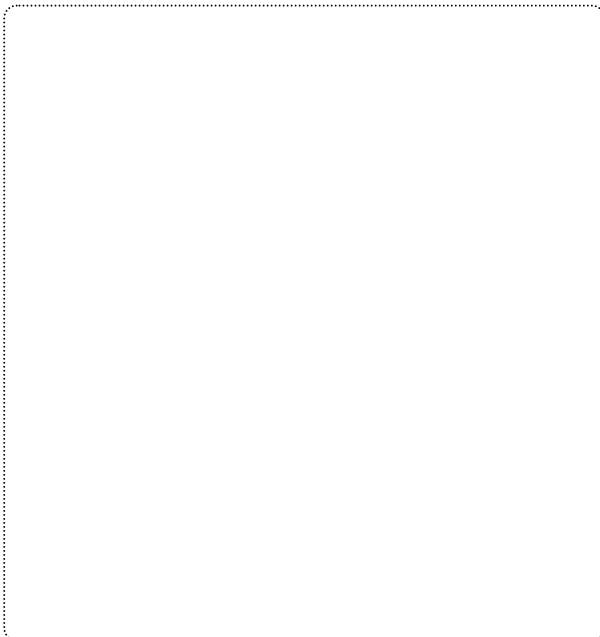
Earphone jack (for wire remote controller) DC 5.0V port

Play Stop A↔B Menu
VOL + VOL - FF REW
HDD Charge LED

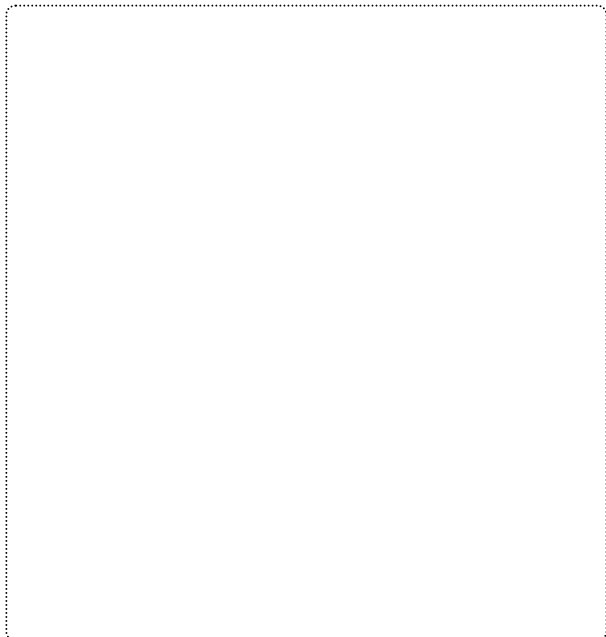
Hold Switch MIC
REC SRS Line-in jack.

USB 2.0 Port USB 1.1 Host Port

Wire Remote Controller



IR Remote Controller



Package Components

MP3 Player

Infrared Remote
Controller

Wire Remote
Controller

USB 2.0 Cable

USB 1.1 Host Cable

AC Adapter

Stereo Earphone

Line-in Cable

User Manual

Neck Strap

Installation CD

LCD

• MP3 Player



Battery status Playing status
HDD operation status icon
Repeat Replaying order
Repeat ID3Tag
Number of folders
Number of files
Title Playing Time
EQ Bitrate Sampling Rate
SRS Sleep Level Mater Volume
Icon
List: Next songs

• Record



Recording status
Recorded file
Recording time
Recording bitrate
Recoding
Sampling Frequency
Progress bar

• FM



Preset Channel FM Frequency
Stereo Volume

• LED

Charging



HDD Active



Basic Operation

1. Turning On/Off Power

Press Play button for a second to turn on the power. After the power is turned on, press Stop button for a while to turn off the power.

After power is supplied from an [external power source (USB or adapter)], the charging status will be indicated by the LED. Then, press Play button to enter into Charging mode. If charging is being made, the battery level symbol will blink.

Press Play button again to enter into normal operation status.

2. Lock Switch

When the lock switch is on (or on the right side), the switch will not function.

3. Main Menu

Press Menu button for a while, and select the main menu by pressing VOL+, VOL-, FF, and REW buttons. After selecting the menu, press Play button. To cancel menu selection, press Menu button, and to exist Mode menu, press Stop button.

Play List	Music Box	Search Play	FM Radio	Text	Record	USB Data	User Folder
-----------	-----------	-------------	----------	------	--------	----------	-------------

4. Adjusting Volume

The user can adjust the volume by pressing VOL+ or VOL- button, and continuously adjust the volume by pressing each button for one second or more.

- | |
|---|
| <ul style="list-style-type: none">* Volume levels are from 0 to 30.* When the player is turned on, the volume level will be at 10. |
|---|

5. Repeat

While playing a song, shortly press A↔B button. Then, the starting point (A) will be defined, and Repeat icon (A↔) will blink on the LCD. Press A↔B again to define the ending point (B). Repeat icon (A↔B) will be displayed on the LCD. The user can turn off Repeat function by pressing A↔B button again.

6. Adjusting Playing Speed

7. Selecting SRS

The user can select SRS by pressing SRS button while a song is played in Music Box, Search Play, or Record (Encode or Voice Record) mode.

8. Setting Bookmark

To bookmark an MP3 or WMA file, press **SRS** button shortly in **Stop** mode. Bookmark function is available only in Music Box mode.

9. Recording

Recorded file will be saved under different folders depending on the mode when the user presses Recording button. If the user **connects** line-in cable while recording voice, **voice will be recorded till the user presses Stop button.**

While the line-in cable is connected, the user cannot enter into FM mode. Although the user disconnects the cable during line-in recording, **line-in recording will not stop.**

The player provides a monitoring function with which the user can listen to the recorded contents through the earphone while recording voice. The memory space (Total time : Remaining time) will be **displayed** in %.

* Encode

- When the line-in cable is connected to the player, line-in recording will be automatically made and the recorded file will be saved under Encode **folder.**
- The user can record radio broadcasting by pressing REC button while listening to radio, and the recorded **file** will be saved in Encode mode.

* Voice Encode

When the user records voice without a line-in cable connected, the recording will be made by the built-in microphone and the recorded file will be saved under Voice folder.

The recorded file can be replayed under Voice folder in Record mode, and maximum 1,000 files can be recorded and saved.

10. Host Function

The user can copy data from an external device to the player with Host function.

Connect the USB 1.1 host port to the external device through the USB host cable.

The data saved in the external device will be displayed.

Button Manipulation

- Music Box Mode

Button	Key Function	When Stopped	While Playing
Play/Pause	Short	Plays the current track.	Pauses playing the current track.
	Long	Plays the previous part. (Intro scan)	Plays the previous part. (Intro scan)
FF	Short	Goes to the lower folder .	Plays the next track.
	Long	Automatically goes to the next-lower folder .	Fast-forward the current track.
REW	Short	Goes to the upper folder .	After 5 seconds: Plays the track from the beginning. Before 5 seconds: plays the previous track.
	Long	Automatically goes to next-upper folder .	Rewinds the current track.
Menu	Short	Enters into Mode menu.	Starts navigation.
	Long	Enters into Main menu.	Enters into Main menu.
Volume +	Short	Converts to the previous track.	Increase the volume.
	Long	Automatically converts to the previous track.	Automatically increases the volume.
Volume -	Short	Converts to the next track.	Lowers the volume.
	Long	Automatically converts to the next track.	Automatically lowers the volume.
A↔B	Short	×	Activate/Deactivate Repeat function.
	Long	×	Adjusts the playing speed.
SRS	Short	Change SRS.	Change SRS.
REC	Long	Starts recording.	×
Stop	Short	×	Stops playing the current track.
	Long	Turns off the power.	Stops playing and turns off the power.

- FM Radio Mode

Button	Key Function	Frequency Mode	Preset Mode	Preset Mode
FF	Short	Adjusts the FM frequency.	Converts to the next preset channel.	Increases the channel.
	Long	Automatically seeks FM channels (+).	Automatically increases the channel .	-
REW	Short	Adjusts the FM frequency.	Converts to the previous channel.	Lowers the channels.
	Long	Automatically seeks FM channels (-).	Automatically lower the channel .	-
Volume+	Short	Increases the volume.	Increases the volume.	Increases the volume.
	Long	Automatically increases the volume.	Automatically increases the volume.	Automatically increases the volume.
Volume-	Short	Reduces the volume.	Reduces the volume.	Reduces the volume.
	Long	Automatically reduces the volume.	Automatically reduces the volume.	Automatically reduces the volume.
SRS	Short	Enters into Preset menu.	Saves the frequency.	×
	Long	Enters into Preset mode.	×	Calls the frequency.
A↔B		Automatically searches frequencies and preset the searched frequency.	×	×
REC	Long	Starts recording.	Starts recording.	Starts recording.
Stop	Long	Turns off the power.	Turns off the power.	Turns off the power.

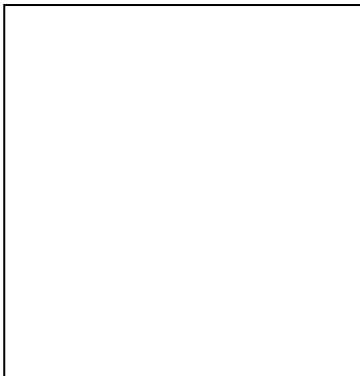
● Record Mode

Button	Key Function	When Stopped	While Playing	During Recording
Play/Pause	Short	Starts to play the current file.	Stops playing the current track. (Pause)	×
	Long	Plays the previous part. (Intro scan)	Plays the previous part. (Intro scan)	×
FF	Short	Converts to the lower folder .	Converts to and plays the next file.	×
	Long	Automatically converts to the lower folder .	Fast-forward the current track.	×
REW	Short	Converts to the upper folder .	After 5 seconds: Plays the track from the beginning. Before 5 seconds: Converts to and plays the previous file.	×
	Long	Automatically converts to the upper folder .	Rewinds the current track.	×
Menu	Short	Enters into in Mode menu.	Starts navigation.	×
	Long	Enters into in Main menu.	×	×
Volume +	Short	Converts to the previous file.	Increases the volume.	Increases the volume.
	Long	Automatically converts to the previous file.	Automatically increases the volume.	Automatically increases the volume.
Volume -	Short	Converts to the next file.	Reduces the volume.	Reduces the volume.
	Long	Automatically converts to the next file.	Automatically reduces the volume.	Automatically reduces the volume.
A↔B	Short	×	Activates/Deactivates Repeat function.	×
	Long	×	Sets the playing speed.	×
SRS	Short	-	Changes SRS.	×
REC	Short	-	×	REC Pause
	Long	Starts recording.	×	×
Stop	Short	×	Stops playing the current track.	Stops recording.
	Long	Turns off the power.	Stops and turns off the power.	Saves and turns off the power.

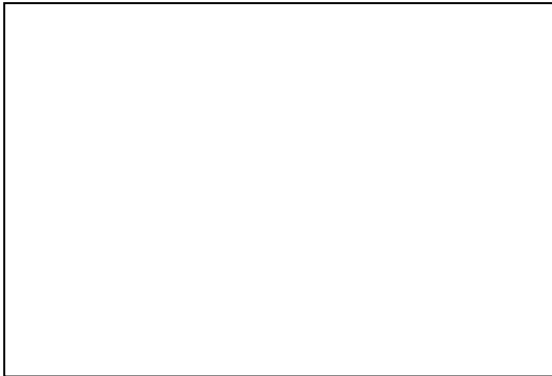
- Search Play

Button	Key Function	Upon File Selection
Play/Pause	Short	Starts to play the current track.
FF	Short	Searches the next character string.
REW	Short	Searches the previous character string.
Menu	Short	Enters into Mode menu.
	Long	-
Volume +	Short	Goes to the previous track.
Volume -	Short	Goes to the next track.
REC	Long	-
Stop	Long	Turns off the power.

FM Radio Reception



- Turn on the power, and select RM Radio from Mode menu.
- Auto Seek is a very useful function for listening to FM radio. Press **FF/REW** button for a few seconds. Then the channel will be automatically tuned in. The user can manually tune in the channel by shortly pressing FF/REW buttons. (When using Auto Seek function in an area with low signal reception, the user needs to manually tune in the channel by pressing **FF/REW** buttons. The user can set the environment to listen to the radio – Mute, Mono, or Stereo function.)



- Saving Channels

Select the broadcasting channel to listen to by pressing **FF/REW** buttons, and shortly press SRS button. Then, the channel will be preset, and “Channel 01” message will be displayed. At this time, press **FF/REW** button and select the channel number (1 ~ 20). Then, press SRS button again to save the channel.

(The user can check the channels by pressing SRS button for a few seconds in Frequency mode. Then, Frequency mode will be changed into Preset mode, and all channels

and frequencies will be displayed. By pressing **FF/REW** buttons, the user can search all channels.)

- Recording

The user can record radio by simply pressing REC button while listening to FM radio.

The recorded file will be named **ENC001** and saved under **Encode** folder in **Record mode**. According to the recording order, the index will be saved.

* **Notes**

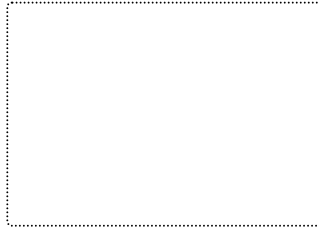
Noise might be included in recording in a place with low reception or when recording is made indoors. When this happens, move to another place with better reception.

The earphone line functions as an antenna. We recommend users to unfold the line as long as possible for best reception.

Mode Menu

Press Menu button to enter into Mode menu. Mode menu is for replaying music and includes following sub menus. The user can select sub menus by pressing +, -, REW, and FF buttons.

Mode Menu



Play List



Music Box



Search



Record



User Folder



User Data



FM



Text



PLAY LIST

The user can create his/her own play list with the bookmark and M3U files. The user can **save** maximum 100 songs in the bookmark.

M3U files support maximum **100** songs with each M3U file saving 50 songs.



Play List created by bookmark (*.BMK)

Play list edited in WINAMP (*.M3U)

The user can edit the bookmark file on the device and M3U files in WINAMP.



* Creating M3U File

1. Run WINAMP program.
2. Open the music file.
3. Save the list.
4. Define the M3U file path.
5. Saving is completed.



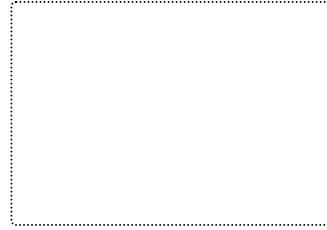
MUSIC BOX

All MP3, WMA, OGG, and WAV files in the HDD will be played. The player can support maximum 1,000 folders and 5,000 titles.



◆ SEARCH

The user can quickly and easily find the song that he/she wants using Search function.



◆ RECORD

* Encode

The user can replay files recorded by Line-in feature or during user's listening to the FM radio.

* Voice Record

The user can replay files recorded with the microphone.



◆ USB FOLDER

The user can open photos and pictures saved as image file format – JPG, JPEG, or BMP.



◆ USB DATA

The user can replay files copied from external devices using Host function.



◆ FM

Auto Seek function is very useful for listening to FM radio. When user presses FF/REW key for a second, the channel will be automatically tuned in. In an area with low signal reception, the user may be required to manually tune in the channel using FF/REW keys.



* Saving Channels

Select the **frequency** of the channel using FF/REW buttons and shortly press SRS button. Then, the selected frequency will be preset, and "Channel 01" message will be displayed. At this time, select the channel number (1 ~ 20) and press SRS button to save the selected frequency. (To check the channel numbers, press SRS button for a few seconds in Frequency mode. Then, the mode will be changed into Preset mode, and the saved channels and frequencies will be displayed. At this time, the user can search any channel by pressing FF/REW buttons.)

* Recording

The user can record the radio by pressing REC button while listening to FM radio. The recorded file will be named **ENC001** and saved under **Encode** folder in **Record mode**. According to the recording order, the file index will be saved.

Notes

(Noise might be included in recording a place with low reception or when recording is made indoors.

When this happens, move to another place with better reception.

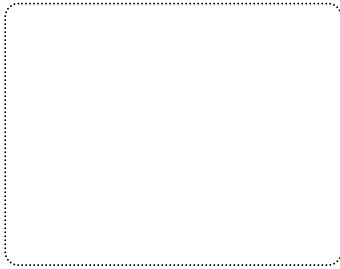
(The earphone line functions as an antenna. We recommend users to unfold the line as long as possible for best reception.

**TEXT**

The user can open text data saved under Text folder.



Main Mode



MAIN MENU

SYSTEM

AUTO PLAY
POWER OFF TIME
FAST Charge
AUTO SCAN LEVEL
FM BAND MODE
SYNCHRONOUS
VOICE
ENCODE
SLEEP TIME
INTRO TIME
RESUME
DEFAULT

DISPLAY

LANGUAGE
BACKLIGHT TIME
SCROLL SPEED
LCD CONTRAST
ID3 TAG
PLAY TIME
SYSTEM
LYRICS
JPEG

REPEAT

PLAY MODE
PLAY DATA MODE

SOUND

EQUALIZER
USER EQ
SRS LEVEL
TRUBASS LEVEL
FOCUS LEVEL
DEFAULT VOLUME

SRS

NORMAL
WOW EFFECT
SRS EFFECT
TRUBASS EFFECT

DELETE

DELETE ON
DELETE FOLDER

1. SYSTEM

AUTO PLAY ON, OFF

The user can set automatic playing of the selected file.

POWER OFF TIME

1 MINUTE, 3 MINUTES, 5 MINUTES, ALWAYS ON

The user can set the player to be automatically turned after a certain time of player's not functioning.

FAST CHARGE ON, OFF

The user can set to rapidly charge the battery using the adapter.

ON: Three hours of rapid charging using the adapter

OFF: **Four** hours of normal charging using the adapter

- When the Ac adapter and the USB are connected to the player, the player will be automatically charged.
- While the battery is being charged by the AC adapter, the green LED is on, and after charging is completed, the green LED will be turned off.
- If the user turns off the player while the AC adapter is connected to the player, the player will enter into Charging mode (with the corresponding LED turned on.)

Normal Charging	Rapid Charging	USB Charging
4 hours	3 hours	4 hours

※ When the player is set to be charged through the USB in Main menu, the player will not be connected to the PC but will be only charged.

AUTO SCAN LEVEL LOW, MID, HIGH


The user can set the FM sensitivity level.

FM BAND MODE WORLD, JAPAN, EUROPE


World: 87.5 ~ 108MHz, 100KHz Step
Japan: 76.0 ~ 108MHz, 100KHz Step
Europe: 87.5 ~ 108MHz, 50KHz Step

 **SYNCHRONOUS** ON, OFF

On: The start and the end of the song are automatically detected, and separate files are created for each track.
Off: The user can define the start and the end of the track.

 **VOICE** 32 Kbps, 48 Kbps, 64 Kbps, 96 Kbps, 128 Kbps

The user can set the sound quality for voice recording:
32Kbps, 48Kbps, 64Kbps, 96Kbps, or 128Kbps

 **ENCODE** 32 Kbps, 48 Kbps, 64 Kbps, 96, Kbps 128 Kbps

The user can set the sound quality for line-in recording and FM recording:
64Kbps, 96Kbps, 128Kbps, 256Kbps, or 320Kbps

 **SLEEP TIME** OFF, 15 ~ 120

The player will be turned off after a certain time preset by the user:
Off and nine steps every 15 minutes from 15 minutes to 120 minutes

 **INTRO TIME** 5, 10, 15

The user can decide to play only the beginning part of the track:
5, 10, or 15 seconds.
The track will be played only for the time preset by the user.

 **RESUME** ON, OFF

On: Playing of the track will be resumed from the point where playing stopped previously.
Off: The track will be played from the beginning.

◆ **DEFAULT** NO, YES

If the user activates Default (by selecting Yes), the setting of the player will be reset into default setting made in the factory.

2. **DISPLAY**

◆ **LANGUAGE** KOREAN, ENGLISH, JAPANESE, CHINESE

The player supports Korean, Japanese, (traditional) Chinese, and (simplified) Chinese.

* **Notes**

- ID3 Tag, file names, folder names, and text are decided by the OS in which they are created.
- For example, files created in a Korean-version OS, the file names will be properly displayed in proper Korean setting only.

◆ **BACK LIGHT TIME** 0 ~ 10

The user can set the backlight time from 0 to 10 seconds.

◆ **SCROLL SPEED** X1, X2, X4, X8, X16

The user can set the scroll speed on the LCD - X1, X2, X4, X8, or X16.

◆ **LCD CONTRAST** 0 ~ 10

The user can adjust the LCD contrast from 0 to 10.

◆ **ID3 TAG** ON, OFF

On: The singer, the title, and the album title of the MP3 file will be displayed.

If there is no ID3 tag information, only the file name will be displayed.

Off: Only the file name will be displayed.

◆ **PLAY TIME** NORMAL, REVERSE

Normal: The played time of the track will be displayed.

Reverse: The remaining time of the track will be displayed.

◆ **SYSTEM**

The user can set to display system information:

Firmware version, HDD space, used space, and number of saved files.



◆ **LYRICS** ON, OFF

When there is an LCR file names same as the title of the song currently played, the lyrics will be displayed on the LCD.

On: To displays lyrics

Off: Not to display lyrics



※ If there is no LCR file, lyrics will not be displayed although Lyrics function is on. For more information about creating an LRC file, see the corresponding part in the manual.



◆ **JPEG** ON, OFF

On: To display JPG and JPEG files under User folder on the initial screen

Off: To use the default initial screen design

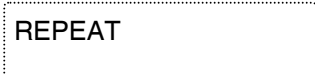


◆ **TEXT** NORMAL, REVERSE

Normal: To display dark characters on the bright background

Reverse: To display bright characters on the dark background

3. REPEAT



◆ **PLAY MODE** NORMAL, REPEAT, SHUFFLE

NORMAL: To play all tracks in order once

REPEAT: To repeat the current track

SHUFFLE: To continuously play all tracks in a random order





PLAY DATA MODE

ALL FILE, ONE FILE, ALL FOLDER,
ONE FOLDER

ALL FILE: To set all files
ONE FILE: To set on file
ALL FOLDER: To set all folders
ONE FOLDER: To set one folder



4.

SOUND



EQUALIZER

NORMAL, CLASSIC, ROCK, JAZZ,
U-BASS, USER EQ

The user can select a suitable equalizer for the current track.



USER EQ

The user can set the equalizer by himself/herself.



SRS LEVEL

1 ~ 10 LEVEL

The user can set SRS effect from 1 to 10.



TRUBASS LEVEL

1 ~ 10 LEVEL

To user can set TruBass effect from 1 to 10.



FOCAS LEVEL

LOW, HIGH

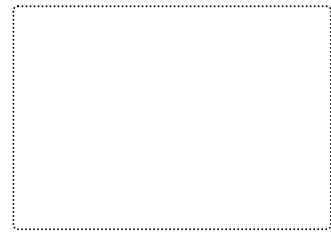
Te user can select the FOCAS effect – Low or High.




 **DEFAULT VOLUME** 20 ~ 30 LEVEL

When the user turns on the player, the user can set the volume level.

When the user sets high volume, loud sound may do harm to user's hearing ability. We recommend the user to set a proper level of volume sound.



5. 

 **SRS** Normal, WOW, SRS, TruBass

With the SRW Wow function, the user can enjoy music to the maximum. .



※ **SRS WOW Effects**

SRS WOW is the most widely used 3D sound technology developed by SRS Institute in the USA. SRS WOW technology realizes 3D sound effect only with two speakers as if using multi-channel speakers. This technology consists of SRS for surround effect, TruBass to complement low-tone sound, and Focus to increase the clarity of sound. The user can select the sub features to get the best sound effect.

6. 

 **DELETE ON**

The user can delete voice, line-in, and FM radio recording files and related folders.

Recording

This player supports three kinds of recording – recording with the built-in microphone, recording from an external device through Line-in port, and FM radio recording.

- ① Recording with the built-in microphone: Press REC button shortly in any mode except **FM, Text, or Search** mode. Then, the player will automatically enter into Voice mode and start to record voice next to the final recording file.
- ② Recording from an external device through Line-in port: Connect the line-in cable to the output port of an external device and the line-in input port of the player. Then, press REC button **for a while** in any mode except **FM, Text, or Search** mode. Then, the player will automatically enter into Line In **Record** mode and start recording next to the final recording file.
- ③ FM radio recording: The user can record FM radio broadcasting by pressing Recording button while listening to FM radio.

- **Recording Monitoring**

The user can listen to the recorded contents by connecting the earphones while recording.

- **Checking Remaining Recording Time**

The remaining memory space is **displayed** during recording for the user's reference..

<Caution>

- Recording is made only there is available space for recording (**32KB**).
After the available space is used up, "Memory Full" message will be displayed.
- The user can record maximum **2, 000 files**.

※ Notes

- About Memory Full
"Total" displayed on the LCD of the player while the player is on shows the capacity of the memory, and "Used" shows the used space in the memory.

Connecting External Devices

- Connecting External Devices

When the line-in cable is connected, the player will automatically enter into **Record** mode and opens **Encode folder**.

The user can copy the voice files recorded with the audio cable to external devices such as cassette tapes and MDs.

- Connecting to an audio device

- ① When recording to the player from an external source

Connect the audio cable to Line In Input port of the player.

- ② When recording to an external source from the player

Connect the audio cable to the earphone port of the player and the microphone port or an input port the external device.

※ Notes

- **When connecting the player to an external device, turn off the device first.**
- Please read the manual of the external device before connecting the player to an external device.
- The player does not internally provide power for the external microphone. Therefore, the user cannot record voice by connecting an external microphone to Line-in port.

- When recording to the player from an external device

When recording from an external device, lower the volume of the source device and connect the cable to the player before starting recording.

- When recording to an external device from the player

Start recording as soon as turning on the player.

(However, this timing may differ depending on each device. Therefore, we recommend users to make tests before starting recording.)

When recording, set the volume the player at the mid level and do not change the volume level during recording.

Installing Drivers and Uninstalling

The player provides USB mass storage function so that the player itself can function as a single hard drive. The user can connect the player to the PC in which Windows ME, 2000, or XP, not Windows 98, is installed by plug-and-play method without installing special software.

Installing Driver

(1) For Windows ME, 2000, or XP

When connecting the player to the PC through the USB cable, "Detect New Hardware" message will be displayed and the driver will be automatically connected.

* Click on [My PC], and check if the player is detected as a portable disk.

* After the USB driver is normally installed, click on Manager and Device Manager tab. Then, check if the player is displayed as a large-capacity USB storage. (In Windows ME, "?" may be displayed, which is not an error.)

(2) Disconnecting the Cable from the USB Port

Before removing the player, disconnect the cable first.

Otherwise, the data may be lost or broken.

① Close all files.

When a file or folder is open, the device will not be properly removed from the PC.

② Click on the icon displayed on the lower-right part of the screen. Then, the toolbar shown below will appear. Delete the device.

③ Click on the toolbar. Then, the following window will appear.

④ When a toolbar shown below appears, physically disconnect the player from the PC.

Connecting to the PC

The player provides USB mass storage function so that the player itself can function as a single hard drive. The user can connect the player to the PC in which Windows ME, 2000, or XP, not Windows 98, is installed by plug-and-play method without installing special software.


◆ Connecting to the PC

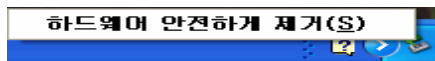
If the user connects the USB cable while the device is off or being charged, the device will function by USB power and software connection will be automatically made. (While recording with the device, the user cannot connect the device to the PC.)

If the user's PC uses Windows 98, the user will need to install a separate driver.

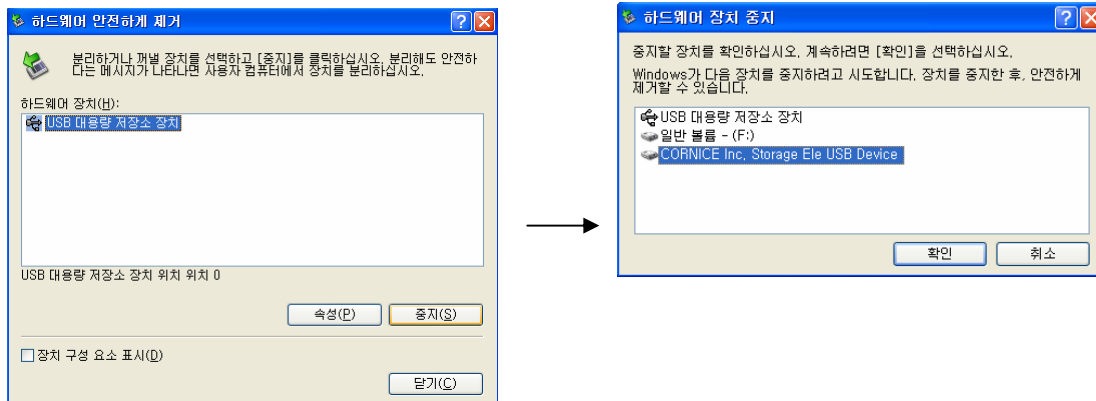
◆ Disconnecting from the PC

Before removing the player, disconnect the cable first. Otherwise, the data may be lost or broken.

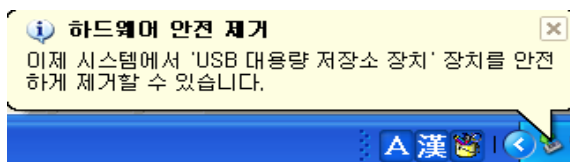
① Close all files and click on icon at the lower-right part of the screen. (If there is a file or folder open, the device will not be properly removed from the PC.) Then, the following toolbar will be created:



② Click on the tool bar. Then, the following window will appear. Delete the device.



③ When the following toolbar is displayed, physically disconnect the player from the PC.

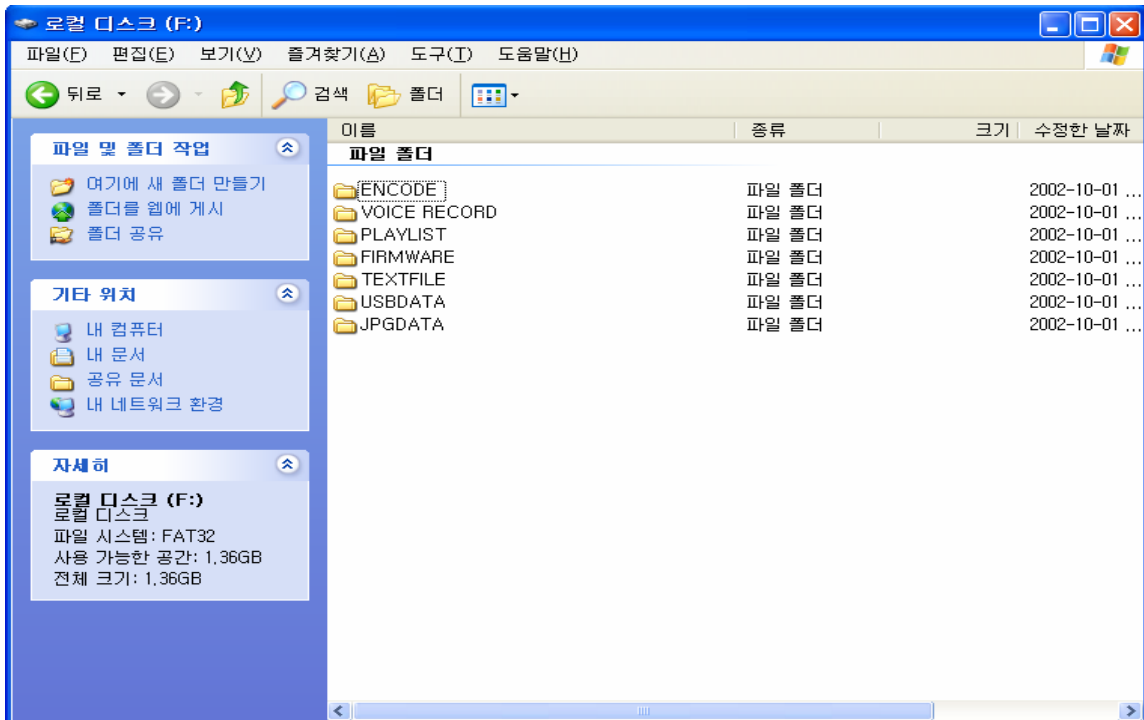


※ If the PC supports only USB 1.1, a message that says that the device cannot be removed may be displayed. When this happens, check the HDD is not operating and disconnect the USB cable.

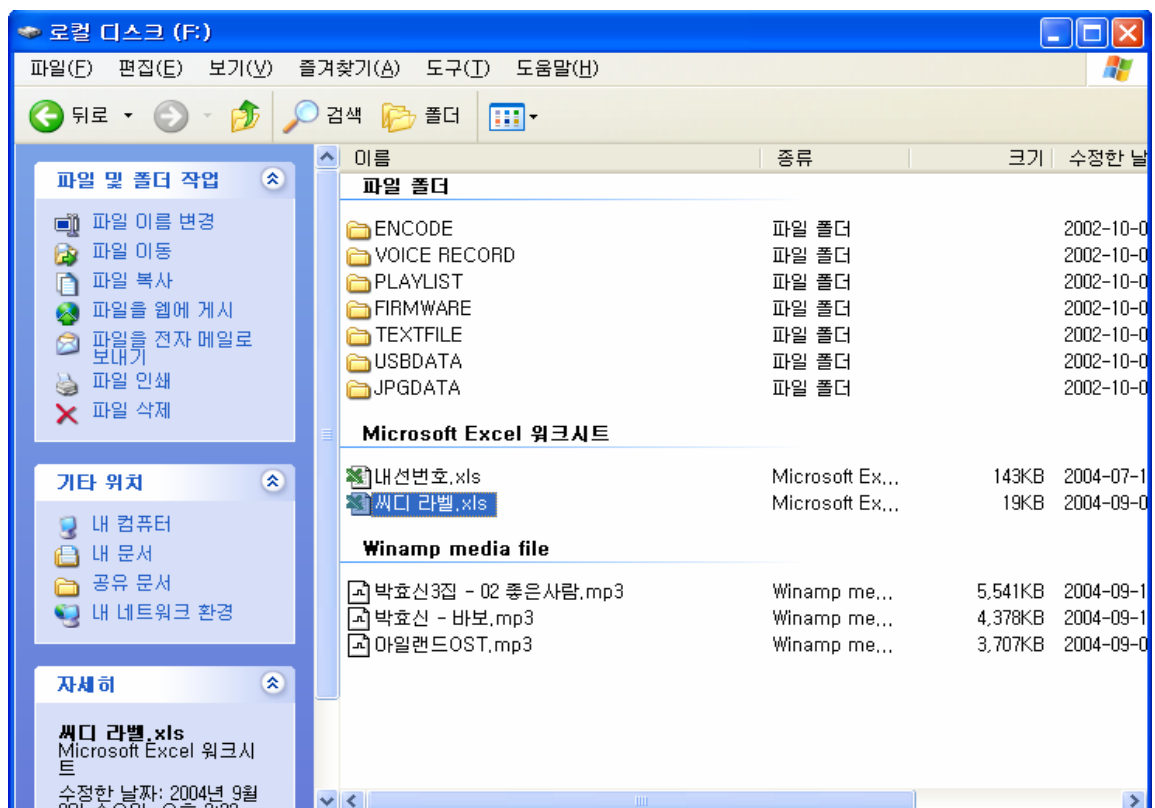
Supporting FAT32 File System

Management of Folders and Files

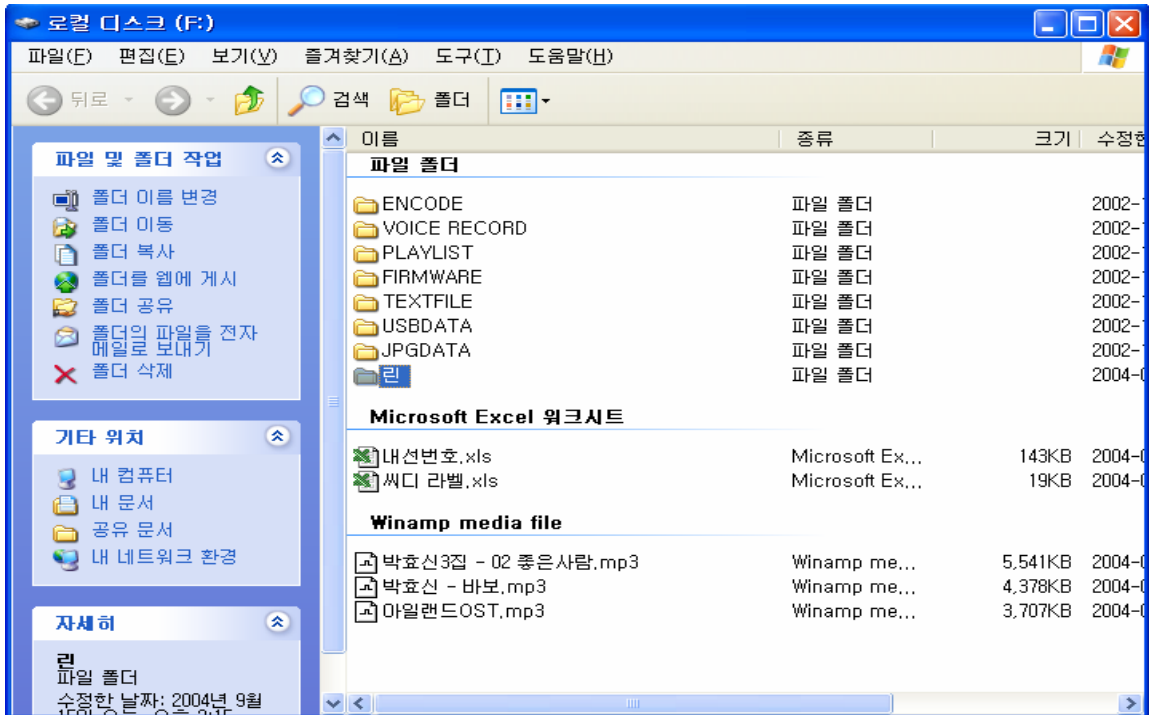
(1) When the user connects the player to the PC for the first time, the following window will appear in which Encode, Voice Record, Play List, Firmware, Text File, USB Data, and JPG Data folders are included.



(2) The user can save not only MP3 music files but other data files, and read, write, and delete them on the player just as in the hard disk of the computer.

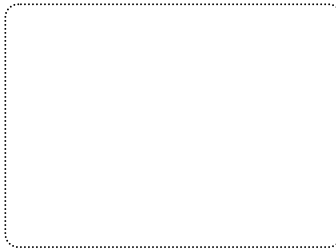


(3) No separate folder will be created when the player is connected to the PC in Music Box mode. The user can create folders on the PC as shown below and check them on the player in Music mode.



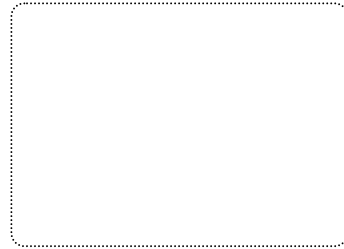
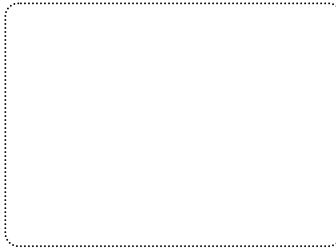
* The user can check music folders and files in the folder in Music **Box** mode.

Firmware Upgrade

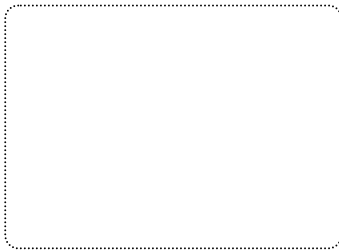
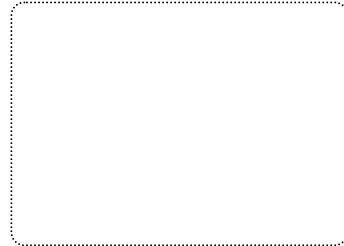


Receiving Firmware File
Connecting to the PC

Firmware File Set Drive
Copying Firmware Folder
Remove from PC



Set On
Upgrading



Rebooting
Upgrading Completed

Troubleshooting

 When a breakdown is suspected, please check the following:

Trouble	Things to Check	Measures
The power is off.	Check if the hold switch is in On position.	Move the hold switch to Off position.
	Connect the adapter and check if the Player functions.	Check if the battery is charged. Charge the battery, if necessary.
The sound is off or noise is generated.	Check if the volume level is 0.	Increase the volume. (VOL 20 is recommended.)
	Check if there is a playable file saved in the player.	Copy a playable file from the PC.
	Check if the file has been damaged.	Copy the file again from the PC.
	Copy the corresponding file to the PC, and check if the file is normally played in the PC.	This problem might occur when the bitrate is too low.
The AC adapter does not function.	Check if the adapter is correctly connected to the outlet.	Correctly connect the adapter to the outlet.
	Check if the suitable input power is supplied.	Connect the adapter to an outlet with designated voltage.
	Check if DC port is correctly connected.	Correctly connect the DC port to the outlet.
Characters are not normally displayed on the LCD. The lyrics are not displayed.	Check the file to be played and O/S where ID3 Tag data was created.	Set Multi-language submenu in Main menu.
	Check if Lyrics menu is on in Main menu.	Set Lyrics menu on in Main menu.
	Check if there is an LCR file with same name as the file to be played under the same folder.	Copy the same-named LCR file to the same folder.
The noise is detected when the user listens to the radio, and it is difficult to tune in the channel.	FM radio reception is difficult in frequency-shadow areas such as buildings, subways, moving vehicles.	The player and the earphones function as an antenna. Adjust directions of the player and the earphones to better receive signals.
Automatic connection is not made to the PC.	Automatic connection is not made in Windows 98 OS.	Check the OS. If the OS is Windows 98, install Windows 98 driver.
	Check if the USB cable is correctly connected to the player.	Correctly connect the USB cable to the player.
Connection is not established with an external USB device.	Check if the cable is correctly connected to the USB 1.1 host port.	Correctly connect the cable to the USB 1.1 host port.
	Check if the external USB device is a UMS type.	If the connection is not automatically established when the device is physically connected to the PC, the host function cannot be used for the device.
The playing time is different from described from the manual.	The shorter the track time, the shorter the playing time.	
	The higher the sampling frequency and the bitrate of the track, the shorter the playing time.	
	The more key manipulations and the shorter the LCD backlight time, the shorter the playing time.	

Specifications

Part	Item	Specification
HDD Disk	Capacity	2GB
	Size	1 inch
	File System	FAT32
Audio	Frequency Range	20Hz ~ 20KHz
	Earphone Output	10mW(L) + 10mW(R): 16Ω, Maximum volume
	Signal to Noise Ratio	90db (1KHz input 0db at USE LPF 30KHz)
	Frequency Respond	±2dB
	Distortion	0.1%±0.05 (1KHz input 0db)
	Number of Files	Maximum 5000EA (MP3 + WMA)
	Channel	Stereo
Recording	MP3 Bitrate	64 Kbps, 96 Kbps, 128 Kbps, 256Kbps, 320 Kbps
	Voice Bitrate	32 Kbps, 48 Kbps, 64 Kbps, 96 Kbps, 128Kbps
FM Radio	World	87.5 ~ 108.0MHz Step 100KHz
	Japan	76.0 ~ 108.0MHz Step 100KHz
	Europe	87.5 ~ 108.0MHz Step 50KHz
	Earphone Output	10mW(L) + 10mW(R): 16Ω, Maximum volume
	Signal to Noise Ratio	55dB at 1mV
	Reception Type	Earphone Code Antenna
PC Interface	Communication	Built-in USB 2.0, USB 1.1(USB Mass Storage)
	System Specification	CPU 200MHz, RAM 64MB, 20MB or Higher Capacity of Hard Disk
	O/S	Windows98SE, Windows2000, Windows ME, Windows XP
	Sound Card	Compatible with Sound Blaster 16
	Display	640X480 or higher resolution
	USB Jack	USB 'B' Type Plug
File Support	File Format	MPEG 1/2 LAYER 3, WMA, OGG, WAV
	MP3 Bitrate	8Kbps ~ 320Kbps
	WMA Bitrate	5Kbps ~ 192Kbps
	OGG Bitrate	32Kbps ~ 500Kbps
	Tag	ID3 Tag V1, ID3 Tag V2 2.0, ID3 Tag V2 3.0
LCD	Resolution	1.8 inch Color LCD
Playing Time	MP3 Playing	Approximately 12 hours
Power	AC Adapter	DC 5V 1.5A
	Battery	3.7V LI-Polymer
Charging Time	AC Adapter	Approximately 180 minutes for rapid charging or 240 minutes for normal charging
	USB	Approximately 240 minutes
General	Dimensions	
	Weight	
	LCD	1.8 inch CSTN LCD
	Operating Temperature	5°C ~ 35°C
	Supported Languages	Korean, English, Japanese, Chinese (Traditional/Simplified)

Repair Service

- When a breakdown occurs, stop using the product and contact the sales agency or the service center of DIASONIC Technology at 82-031-474-0852 for repair services.

Warranty (Service Policy)

- Free repair services will be provided in compliance with the free repair policy of DIASONIC Technology.
If a breakdown occurs during the warranty period, bring the product with the warranty card to the sales agency or the service center of DIASONIC Technology.

Free repair service will be provided only when the purchase date and the name of the sales agency appear on the warranty card.

Please check all information is written when purchasing the product from the sale agency.

The warranty card is not reissuable so we recommend you keep it safely.

<Free Repair Policy>

1. This product has passed strict quality control and inspection.
2. Breakdowns occurring under normal operating conditions described in the user manual within the warranty period will be subject to free repair services:
3. For the following cases, some service fees will be charged:
 - 1) When the customer fails to submit the warranty card
 - 2) When information is missing in the warranty card – purchase date or the name of the sales agency
 - 3) When the product is damaged or broken down due to user's mishandling
 - 4) When the product is damaged or broken down due to user's repair or remodeling
 - 5) When the product is damaged or broken down due to fires, pollution, earthquakes, and other natural disasters
 - 6) When the product is damaged or broken down due to leakage of the battery
 - 7) When the consumable parts such as a battery need to be replaced
4. This warranty card is only valid for service in Korea.
(This warranty card is only valid for service in Korea.)

(Request When Mailing)

Please beware of the following when sending a mail:

1. Please enclose the warranty card with the product when mailing during the warranty period.
2. Please wrap in shock-absorbing materials and put the product in a box to prevent damage during transportation.
Mailing fees and wrapping fees should be born by customers.
3. To prevent loss, please send the product for repair services by registered mail.

Warranty Card

Product: HDD MP3 Player

Model: DHD-1000

Warranty Period: One Year

Purchase Date: _____, _____

Purchaser	Name	
	Address	
	Telephone	
Seller	Name	
	Address	
	Telephone	

- Please contact the sales agency of DIASONIC Technology Co., Ltd. for breakdown of the product.
- Exchange, (charged or free) repair services, refund, and part-keeping periods comply with regulations of customer protection.
- For questions or more information about the product, contact DIASONIC Technology Co., Ltd.

DIASONIC Technology Co., Ltd.

- Address: 321-43, Seoksu-dong, Manan-gu, Anyang-si, Gyeonggi-do (430-806), South Korea
 - Telephone Number
 - Representative Number: 82-31-474-0852
- Website: <http://www.diasonic.com>

The warranty card is only valid in Korea. Please keep this card for free repair services.

&TTS, Media SYNC