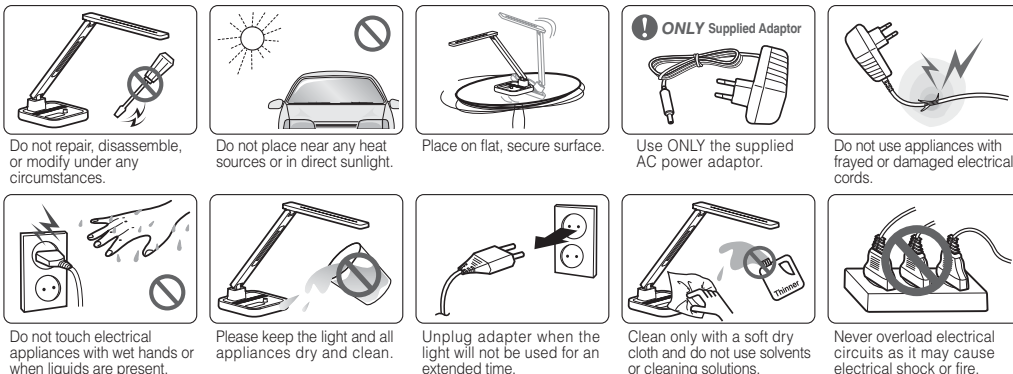


CAUTION



SPECIFICATION

| MODEL | DL-70iSH | DL-70iS | DL-90 | DL-70 |
|-------------------------|---|----------------------------------|---|------------------|
| iPod® & iPhone® Docking | Audio Play & Charging(5V/1A) | | | - |
| USB Power Port | Charge only (700mA) | - | Charge only (700mA) | - |
| USB 2.0 | iPod® & iPhone® Charging, Connection to the computer | | | - |
| Speaker | L1.2W + R1.2W, Rotary Volume Control, Line in(3.5Ø Stereo Jack) | | | - |
| Color Temp. (K) | Study 6,000~7,000K Reading 4,500~5,500K Relaxation/Bedtime 2,300~3,300K | - | Study 6,000~7,000K Reading 4,500~5,500K Relaxation/Bedtime 2,300~3,300K | - |
| CRI | Over 90 | Over 75 | Over 90 | Over 75 |
| Brightness | 1,100/1,000/900/750/ 600Lux ±100Lux | Approx 1,100Lux ±100Lux | 1,100/1,000/900/750/600Lux ±100Lux | |
| Life Time | Longer than 40,000Hour | | Longer than 40,000Hour | |
| Power | AC 100~240V to DC 12V/2A | AC 100~240V to DC 12V/1.5A | AC 100~240V to DC 12V/1.5A | |
| Power Consumption | 11W for Lighting, 4W for Charging | 9W for Lighting, 4W for Charging | 11W for Lighting, 3W for Charging | 10W for Lighting |
| Dimension | 180(W:Base) x 172(D:Base) x 455(H) x 328(L) | | 180(W:Base) x 172(D:Base) x 450(H) x 352(L) | |
| Weight | 1,160g | | 1,100g | |
| Operating Temp. | -10~40℃ | | -10~40℃ | |

WARRANTY CARD

- Product : LED Desk Lamp
- Model : DL-70iSH/DL-70iS/
DL-90/DL-70
- Warranty Period : 1year
- Purchase Date:

| | | |
|-----------|-----------|--|
| Purchaser | Name | |
| | Address | |
| | Telephone | |
| Seller | Name | |
| | Address | |
| | Telephone | |

▶ For Repair or Service

If the product stops working correctly, discontinue its use and contact the listed service center in the manual or **DIASONIC Technology at 82-31-474-0852**.

▶ Repair Policy

1. This product has passed strict quality control and testing process.
2. Failure of the product under normal operating conditions, during the warranty period may be repaired by Disonic or our authorized service organization free of charge. Some shipping or handling charges may be involved.
3. For the following cases, some service fees will be charged.
 - 1) When the product is damaged due to user's mishandling, abuse, or improper operation.
 - 2) When the product is damaged due to user's modification, attempted repair, or otherwise access to sealed/non-user serviceable items.
 - 3) When the product is damaged due to fires, pollution, earthquakes and any other natural or unnatural conditions, accidents, etc.
4. It will be at the sole discretion of Disonic or the authorized service center to determine the qualification of the warranty service. Original purchase invoice and other documentation may be required to verify qualification of service.



LED DESK LAMP

DL-70iSH/DL-70iS/DL-90/DL-70

USER MANUAL

Made for
iPod iPhone

iPad, iPhone, iPod, iPod classic, iPod nano, iPod shuffle, and iPod touch are trademarks of Apple Inc., registered in the U.S. and other countries.



Thank you for purchasing DL-70iSH/DL-70iS/DL-90/DL-70. Please read instructions with care and operate DL-70iSH/DL-70iS/DL-90/DL-70 safely before use. We'd like to recommend you to keep instructions to use DL-70iSH/DL-70iS/DL-90/DL-70 well.

FCC (Federal Communications Commission)

- **Caution** : Any changes or modifications in construction of this device which are not expressly approved by the party responsible for compliance could void the user's authority to operate the equipment.
- **Note** : This equipment has been tested and found to comply with the limits for a Class B digital device, pursuant to part 15 of the FCC Rules. These limits are designed to provide reasonable protection against harmful interference in a residential installation. This equipment generates, uses and can radiate radio frequency energy and, if not installed and used in accordance with the instructions, may cause harmful interference to radio communications. However, there is no guarantee that interference will not occur in a particular installation. If this equipment does cause harmful interference to radio or television reception, which can be determined by turning the equipment off and on, the user is encouraged to try to correct the interference by one or more of the following measures:
 - Reorient or relocate the receiving antenna.
 - Increase the separation between the equipment and receiver.
 - Connect the equipment into an outlet on a circuit different from that to which the receiver is connected.
 - Consult the dealer or an experienced radio / TV technician for help.

DL-70iSH/DL-70iS



▶ Built in docking interface for Charging & Audio Play

▶ Brightness control feature. (DL-70iSH model only)

- 5 Step Brightness Control Function.

▶ Operational Modes. (DL-70iSH model only)

Reading Mode (4,300~5,300K)
It stimulates concentration and reduces eye strain with the choice of mid-range color temperature.

Study Mode (6,000~7,000K)
Increases attention and concentration with the choice of high-range color temperature.

Relaxation Mode (2,500~3,300K)
Promotes relaxation along with improved mood with the choice of low-range color temperature.

Bedtime Mode (2,500~3,300K)
Encourages a deep sleep with the comfortable soft light.

▶ Timer Control Feature. (DL-70iSH model only)

- Automatically turns off the light off in one (1) hour while in any mode of operation.

▶ One touch control function.

- Convenient to control functions of ON/OFF on various situations by simple touch method.

▶ USB Port

- Possible to recharge various digital devices such as MP3 & Mobile phone through USB port supplying 5V(700mA) power. (DL-70iSH model only)

- Possible to recharge and communicate with computer when iPod® & iPhone® located on LED desk lamp.

Brightness at 40Cm

| DL-70iSH | Unit : Lux, ±50Lux | | | | |
|-----------------|--------------------|--------|--------|--------|--------|
| Step | Step 1 | Step 2 | Step 3 | Step 4 | Step 5 |
| Reading mode | 500 | 650 | 800 | 900 | 1000 |
| Study mode | 600 | 750 | 900 | 1000 | 1100 |
| Relaxation mode | 300 | 350 | 400 | 450 | 500 |
| Bedtime mode | 50 | 100 | 150 | 200 | 250 |

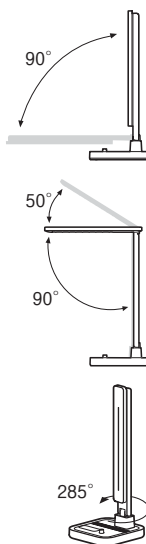
Brightness at 40Cm



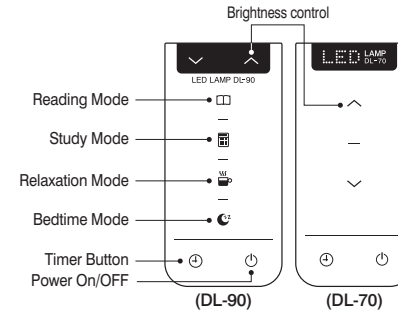
DL-70iSH
- Operational Modes.
- USB Power Port

DL-70iS
- Onetouch ON/OFF
- USB Port

Multi-Pivot-Flexible Positioning



DL-90/DL-70



▶ Brightness control feature. (DL-70iSH model only)
- 5 Step Brightness Control Function.

▶ Operational Modes. (DL-90 model only)

Reading Mode (4,300~5,300K)
It stimulates concentration and reduces eye strain with the choice of mid-range color temperature.

Study Mode (6,000~7,000K)
Increases attention and concentration with the choice of high-range color temperature.

Relaxation Mode (2,500~3,300K)
Promotes relaxation along with improved mood with the choice of low-range color temperature.

Bedtime Mode (2,500~3,300K)
Encourages a deep sleep with the comfortable soft light.

▶ Timer Control Feature. (DL-70iSH model only)

- Automatically turns off the light off in one (1) hour while in any mode of operation.

▶ One touch control function.

- Convenient to control functions of ON/OFF on various situations by simple touch method.

▶ USB Port

- Possible to recharge various digital devices such as MP3 & Mobile phone through USB port supplying 5V(700mA) power. (DL-70iSH model only)

Brightness at 40Cm

| DL-90 | Unit : Lux, ±50Lux | | | | |
|-----------------|--------------------|--------|--------|--------|--------|
| Step | Step 1 | Step 2 | Step 3 | Step 4 | Step 5 |
| Reading mode | 500 | 650 | 800 | 900 | 1000 |
| Study mode | 600 | 750 | 900 | 1000 | 1100 |
| Relaxation mode | 300 | 350 | 400 | 450 | 500 |
| Bedtime mode | 50 | 100 | 150 | 200 | 250 |

| DL-70 | 단위 : Lux, ±50Lux | | | | |
|-------|------------------|-----|-----|------|------|
| Step | 1단계 | 2단계 | 3단계 | 4단계 | 5단계 |
| 독서모드 | 600 | 750 | 900 | 1000 | 1100 |

Easy to Assemble - Instructions

- 1) Unscrew and remove the attachment nut from the light stand as shown.
- 2) Assemble the light stand to the light base as shown.
- 3) Replace the attachment nut to the light stand from where it originally came and hand tighten. (do not over-tighten).
- 4) Adjust the position of the light as desired.

Multi-Pivot-Flexible Positioning

