

DIASONIC

MODEL
DMP-200EN

User's Manual



WARRANTY CARD INCLUDED

Thank you for your purchasing the DIASONIC MP3 player! If you use DIASONIC MP3 player for the first time, please read this manual carefully before use.

FCC Information

This device complies with Part 15 of the FCC Rules. Operation is subject to the following two conditions:

- (1) This Device may not cause harmful interface, and
- (2) This device must accept any interference received, including interference that may cause undesired operation.

Note: This equipment has been tested and found to comply with the limits for CLASS B digital device, pursuant to Part 15 of FCC Rules. These limits are designed to provide reasonable protection against harmful interference when the equipment is operated in a commercial environment. This equipment generates, uses and can radiate radio frequency energy and, if not installed and used in accordance with the instructions, may cause harmful interference to radio communications. However, there is no guarantee that interference will not occur in a particular installation. If this equipment does cause harmful interference to radio or television reception, which can be determined by turning the equipment off and on, the user is encouraged to try correct the interference by one or more of the following measures:

- 1.1. Reorient or relocate the receiving antenna.
- 1.2. Increase the separation between the equipment and receiver.
- 1.3. Connect the equipment into an outlet on a circuit different from that to which receiver is connected.
- 1.4. Consult the dealer or experienced radio/TV technician for help.

WARNING

Changes or modifications not expressly approved by the manufacturer could void the user's authority to operate the equipment.

Introduction

Thank you for purchasing the DIASONIC MP3 player.

Please read this manual carefully before use.

When the device is broken or has a problem, please contact us or a dealer.

Caution:

- Never attempt to repair, disassemble or modify the device by yourself.
- If a user or others misuse the device, or if the device is exposed to an electrical shock, you may find any change or loss of the saved data when it is repaired or battery is changed

You better do memo for the important items on memo pad, note book or PC.

- Please be precautious that we do not take any responsibility for any changes or losses of data.
- Do not drop the device into water or put it in a humid place.
- This manual may be changed for the improvement of performance without notice.

Precaution on copyright

- You are cautioned that MP3 files created by MP3 conversion function can not be used for commercial use or service other than personal use. If you do not follow this, you may break the copyright.
- Copy for commercial use other than personal use is prohibited by law

Notice

Please be cautious not to lose this manual which is essentially needed for using the device. You are cautioned that this manual can not be delivered again.

Caution for safety

Alarm

- Please keep the battery out of reach of small children as it is dangerous for them. If a child accidentally swallows the battery, seek medical advice immediately.
- Do not short, disassemble, apply heat or pressure and put the battery into a fire. It may cause leakage, heat emission, breakage, a fire, etc.
- If the battery leaks and fluid gets into your eyes, wipe out it with water and seek medical treatment immediately. If you do not this, it can cause injury or loss of eyesight.
- When LCD is broken, do not touch the leaked fluid. If the fluid gets into your eyes or comes into contact with your skin, wipe out it with clean water and seek medical treatment immediately.
- When you drive a bicycle, automobile or motorcycle, do not use earphone.
It is very dangerous and you may break the law according to the area.
- Do not turn up the sound volume too high.
If your ears are exposed to high sound level for a long time, it may cause ear problems.
- When ringing in your ear happens, lower the volume or stop using.
- You must use Alkaline battery (1.5V, LR03, AAA Size or UM-4). If you use rechargeable one, it may cause malfunction or severe noise which make your hearing damaged.
- Please read this manual through before use.

Index

Caution

MP3 Player

1. Function and feature
2. Part name and LCD display
3. Battery use and its package contents
4. How to use
5. How to use button
6. How to control menu dial
7. Table of the menu in stop mode of audio and record mode
8. Description of items of each mode
9. How to connect the device to external devices
10. FM radio receiving function

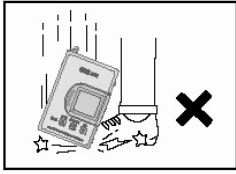
DIASONIC MP3 Explorer II

1. What is DIASONIC MP3 Explorer II?
2. How to install DIASONIC MP3 Explorer II
3. How to install USB DRIVER
4. Configuration of DIASONIC MP3 Explorer II
5. MP3 file sending
6. Sending DMP file through PC
7. Erasing MP3 file and DMP file
9. How to upgrade Firmware

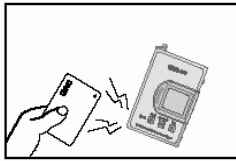
Dimension

Warranty card

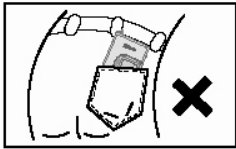
Caution



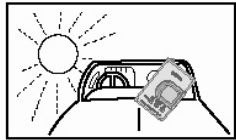
● Do not drop or apply a strong impact. It may cause a malfunction.



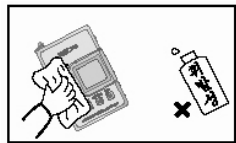
● Be cautious not to put the device near magnetic card like cash card, transportation pass, etc, as it may cause the malfunction of the cards.



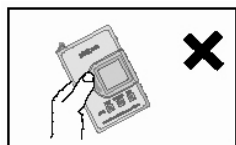
● Do not put it into the back pocket. LCD may be damaged.



● Escape from sunlight. Avoid from a heater or a hot place.



● Please use smooth cloth other than liquid solvent (thinner, benzene, etc.) or wet cloth for removing dust.



● Do not apply strong pressure on LCD as it made of glass, The LCD may be damaged.

● Do not control the key with a solid material or strong power. The key may be damaged.

Function and feature

● As DIASONIC MP3 player is the high performance mobile digital audio player, it plays MP3 and WMA(64Kbps or more), which are compressed digital music files, into various modes, and it is the multi-functional mobile digital audio player of the next generation, allowing high quality voice recording and recording through an external device.

● **Sophisticated and luxurious ultra compact design and secured exterior**

Escaped from the current design, sophisticated ultra compact design and adopting front aluminum case make it more luxurious and mobile.

● **High sound quality MP3 PLAYER**

It is equipped with all the merits of MP3 by adopting various function of MP3 player and has superior sound quality that gives you rich and delicate feeling.

● **Direct encoded recording function**

As it adopt various function of voice recorder into those of MP3 player, voice recording and direct MP3 encoded recording through an external device are available, and it can be used as a mobile data saving device, a mobile hard disk.

● **Bit rate setting**

You can use memory efficiently, as recording sound quality can be controlled by setting bit rate of voice recording or line in recording according to the time and the place.

● **Speed control function**

As you can control the playing speed, you may use it even for linguistic study.

● **LCD monitor of multi-language support graphic and back-light function**

As it adopt graphic LCD supporting Korean, English, Chinese, Japanese, European languages, special characters, etc, you can easily see the name of the song and playing time, and as dark blue back-light of back side of the LCD makes you check LCD display and set menu with buttons even at night.

● Adopting USB interface function which easily connects it to PC.

● Hold function that prohibits misoperation.

● Repeat play function(normal, 1 track, all, random, block repeat)

● Play/pause/intro play, stop/power off, record

● Next track/former track/fast forward/fast rewind

● Volume up/down(digital volume: 30steps)

● Saving/management for each folder(audio folder, record folder)

- Various equalizer mode(normal, classic, live, pop, rock)
- Auto power off function
- Control time of back-light on, scroll speed control function
- File deleting function(one, all)
- **Firmware upgrade**

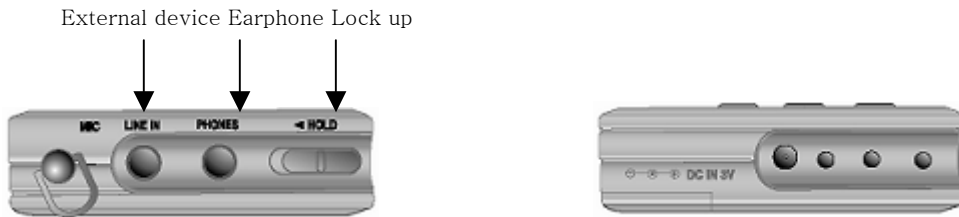
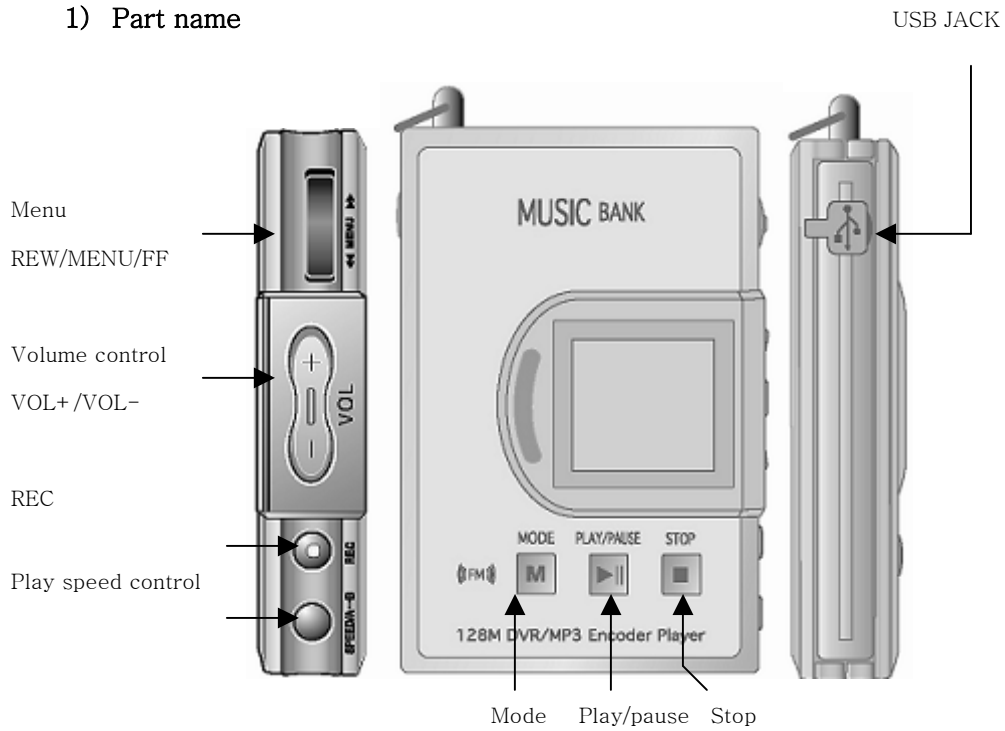
As you can upgrade the function of the device with firmware download function, you can enjoy the latest function. (Refer to chapter 9 of DIASONIC MP3 Explorer)

- Software: DIASONIC MP3 Explorer II

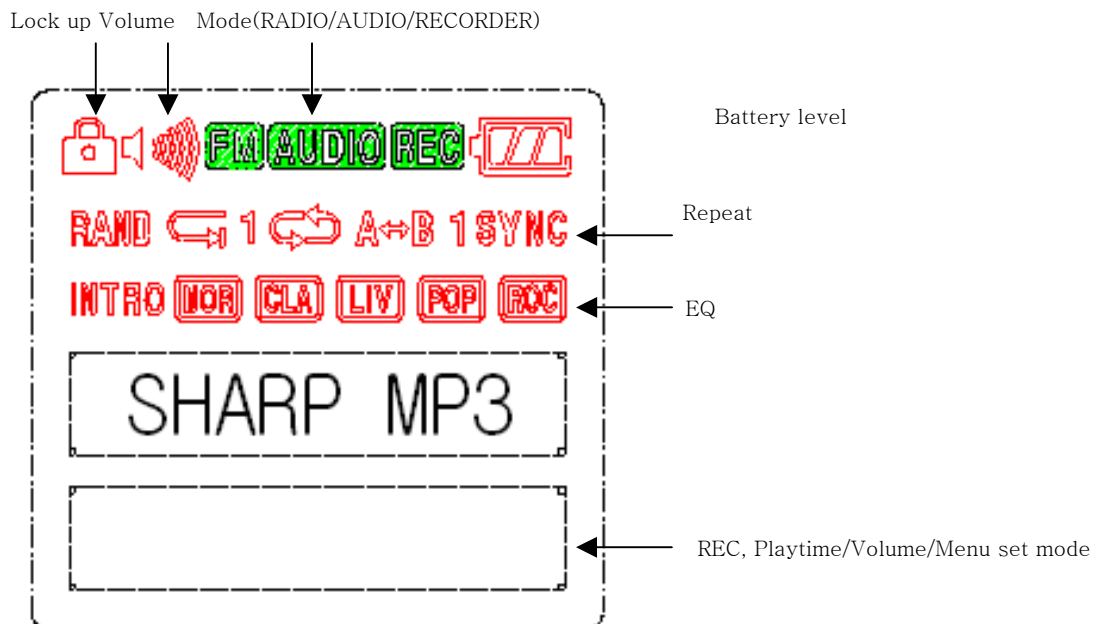
(File transmission, playing MP3/WAV/DMP and voice mail)

Part name and LCD display

1) Part name

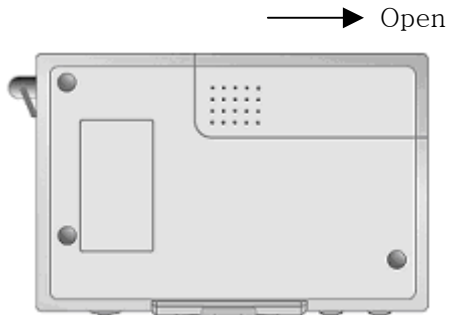


2) LCD display



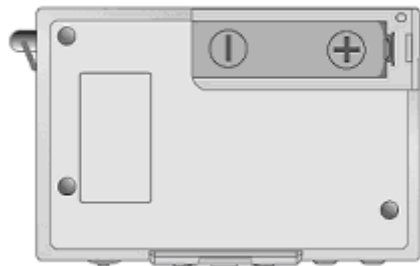
Battery use and its package contents

1. Open battery cover.

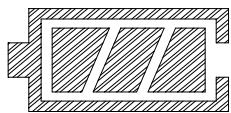


2. Load 1 ea of LR 03 type battery according to the guide of (+) (-) and close the cover.

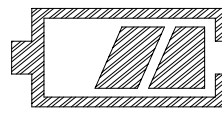
[Battery: LR 03 or compatible one (Size "AAA" or UM-4)]



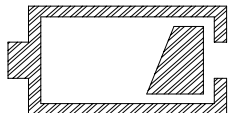
3. After turning on power by pushing play/pause button for a few seconds, check the battery level.



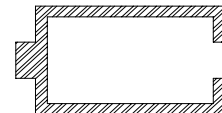
Battery level is high.



Battery level is in middle.



Battery level is low.



It is time to replace the battery.

※ Caution

If LCD display does not show the battery level though you loaded a new battery, please check the polarity of the battery. If it still does not show the battery level when you loaded the battery properly, remove the battery immediately and apply for service.

※ Reference

If you keep the device in a place for a long period loading the battery in it, the battery may be consumed.

4. Duration of battery

Using battery	Play through earphone (Vol.: middle)	Recording (Record mode:32Kbps)
Alkaline battery Size “AAA” LR03	About 7hours	About 7hours

5. Caution for battery

● When you do not use the device for a long time, as there may be a leakage, so, please store it after removing the battery.

● You must use alkaline battery. The device has no recharging function and you must refrain from using rechargeable battery.

Accessories

1. Stereo earphone
2. Line in cable
3. USB Cable
4. Install CD
5. User’s manual
6. Battery (1ea)
7. Neck strap
8. Adaptor (3V 180 mA)

How to use

● How to turn on/off power



When you push play/pause button for more than 1 second, power is turned on. Then, pushing play/pause button for more than 1 second, power is turned off. If you do not any control after turning on power, power is automatically turned off.

● How to use hold switch

When hold switch is set to hold on, switch control won't be done. When you do not use the device or want to keep the current status, please set the switch to hold on.

Before use, check hold switch is set to hold off, turn on power and use it.



Hold off



Hold on

Switch control won't be done.

※ If you turn on power when the hold key is set to hold on, LCD displays "Hold on" and then power is off, so, turn on power after setting the key to hold off.

● Conversion of mode

The device has audio, record and FM radio mode. In pause mode, you can select

each mode with mode button

- **Play, pause and stop**

If you want to play in pause mode, push play/pause button, and if you push play/pause button in play mode, play is paused.

If you push play/pause button at this moment, pause is cancelled and play starts again from then on.

If you push stop button in play mode, it stops at the starting portion of the file being played.

- **Erase**

If you want to erase only the file displayed on LCD, push menu button in pause mode to display menu on LCD, select erase by using FF or REW button and select “ ERS ONE “, yes, then the file is erased.

※ When you erase all the files in audio mode or record mode, select ERS ALL by pushing FF button or REW button in erase menu, select yes and then push menu button.

- **Selecting file and moving**

If you push FF button or REW button in pause mode, you can select the next track and previous track, if you keep pushing the button, you can select them quickly. When you push FF button in play mode, the next track is played, and if you keep pushing the button, the counter of the current track proceeds quickly. If you push REW button, when it is played within 5 seconds, former track is played. If you keep pushing the button, it rewinds quickly to the start of the current track.

- **Volume control**

Control the volume by pushing VOLUME + and VOLUME button. If you keep pushing them, it is continuously controlled.

※ Volume can be controlled with the range of 0~30 steps

※ Volume can be controlled when earphone is plugged, and when you plug out earphone, the device automatically sense “earphone plugged out” and volume is automatically returned to 20 level.

● Intro play

This function is to check quickly what kinds of songs or voice files are in memory by playing front portion for just about 10 seconds. If you push play/pause button in play mode for more than 1 second, LCD displays “Intro” icon, and the front portion of all the tracks is played. If you want to keep the current track played in intro play mode, undo the intro play by pushing play/pause button.

● Block repeat

The device has the function which makes you set a block and hear it. If you push SPEED/A↔B button more than 1 second in play mode, A spot, which is the start point of the block repeat, is set and block repeat icon(A↔B) starts flashing. And if you push SPEED/A↔B button when the ending section of block repeat is played, B spot, which is the end of the block repeat, is set and block repeat icon(A↔B) is also set up, then block repeat starts. To undo the block repeat function, push SPEED/A↔B button again.

● Play speed control

The device has the function which makes you control play speed to normal, fast or slow.

If you push SPEED/A↔B button on play mode, LCD displays the current mode (Normal Spd, Fast Spd, Slow Spd) once and then the set mode is played.

Speed mode being set is not changed unless the mode is changed.

● Record function

Recording in audio mode as well as record mode is available. There are two methods to record; first is to record with the built in microphone, second is to record the output

signal from the external device through line in cable. If the line in cable is not plugged to the set, the built in microphone is automatically selected on recording, and if the line in cable is plugged to the set, line in is automatically selected on recording. **Recording starts by pushing REC button in stop position. To stop the recording, push stop button, then MP3 file is made in audio mode and DMP file in record mode.**

※ As though high quality sound recording in audio mode is possible, but uploading the file through PC connection is prohibited by Copyright.

※ Uploading the file, which is recorded in record mode, through PC connection is legal.

● PC Connection

When you download file by connecting the device to PC through USB cable, LCD displays “USB Connection “and the device comes into PC connection mode. When the device is connected to PC, play is not available, so you must detach the PC connecting cable from the device for play.

Without battery, connection with PC is available by connecting USB jack. When you plug out USB jack, power is turned off, so turn on power and use the device.

※ Ref.: If font size on LCD is too big to show properly, set the basic font size of OS of PC to 96 DPI or normal size. The font size shown on the device is depending on the basic font size of OS of PC.

How to use button

● Audio mode (Short means pushing shortly and long more than 1 second)

Button	Key operation	On stop	In play mode	In record mode
MODE	SHORT	Converted to REC Mode	Remain Time	Remain Time
PALY/PAUSE	SHORT	Current track play starts	PAUSE	-
	LONG	Current track play starts	INTRO play	-
STOP	SHORT	-	Stop play	Stop recording
	LONG	Power off	Stop play	Stop recording
MENU	SHORT	Menu display	Menu display	-
FF	SHORT	Move to next track	Move to next track & play	Index increased only when more than 5 seconds
	LONG	Moving to next track auto increase	FF current track	-
REW	SHORT	Move to previous track	When after 5 Sec, to first of track, When before 5 Sec, move to previous track	-
	LONG	Moving to previous track auto decrease	F REW current track	-
VOLUME+	SHORT	Volume up	Volume up	Volume up
	LONG	Auto volume up	Auto volume up	Auto volume up
VOLUME-	SHORT	Volume down	Volume down	Volume down
	LONG	Auto volume down	Auto volume down	Auto volume down
REC	SHORT	Start recording	-	Pause recording
SPEED/A↔B	SHORT	-	Play speed mode control	-
	LONG	-	Set & undo block repeat	-

※ Ref.: Volume can be controlled only when earphone is plugged.

● Record mode (Short means pushing shortly and long more than 1 second)

Button	Key operation	On stop	In play mode	In record mode
MODE	SHORT	Convert to FM MODE	Remain Time	Remain Time
PALY/PAUSE	SHORT	Current track play starts	PAUSE	-
	LONG	Current track play starts	INTRO play	-
STOP	SHORT	-	Stop play	Stop recording
	LONG	Power off	Stop play	Stop recording
MENU	SHORT	Menu display	Menu display	-
FF	SHORT	Move to next track	Move to next track & play	Index increased only when more than 5 seconds
	LONG	Moving to next track auto increase	FF current track	-
REW	SHORT	Move to previous track	When after 5 Sec, to first of track, When before 5 Sec, move to previous track	-
	LONG	Moving to previous track auto decrease	F REW current track	-
VOLUME+	SHORT	Volume up	Volume up	Volume up
	LONG	Auto volume up	Auto volume up	Auto volume up
VOLUME-	SHORT	Volume down	Volume down	Volume down
	LONG	Auto volume down	Auto volume down	Auto volume down
REC	SHORT	Start recording	-	Pause recording
SPEED/A↔B	SHORT	-	Play speed mode control	-
	LONG	-	Set & undo block repeat	-

※ Ref.: Volume can be controlled only when earphone is plugged.

● FM radio mode

Button	Key operation	FREQUENCY MODE	PRESET MODE	STATION mode
MODE	SHORT	Convert to AUDIO MODE	Convert to AUDIO MODE	-
PALY/PAUSE	SHORT	STATION set up	-	Station set up
	LONG	STATION set up	-	-
STOP	SHORT	-	-	Undo set up
	LONG	Power off	Power off	Power off
MENU	SHORT	PRESET mode	FREQ. mode	-
FF	SHORT	FM FREQ. fine increasing control	Convert to next PRESET CH.	CHANNEL UP
	LONG	FM AUTO SEEK +	Auto Channel Up	-
REW	SHORT	FM FREQ. fine decreasing control	Convert to previous PRESET CH.	CHANNEL DOWN
	LONG	FM AUTO SEEK -	Auto Channel Down	-
VOLUME+	SHORT	Volume up	Volume up	Volume up
	LONG	Auto volume up	Auto volume up	Auto volume up
VOLUME-	SHORT	Volume down	Volume down	Volume down
	LONG	Auto volume down	Auto volume down	Auto volume down
REC	SHORT	Start recording	Start recording	-
SPEED/A↔B	SHORT	-	-	-
	LONG	-	-	-

※ Ref: Volume can be controlled only when earphone is plugged.

※ When station is set, if no any key operation, it is automatically undone.

※ Earphone play a role as an antenna. The longer the earphone line the better the receive sensitivity.

How to control menu dial

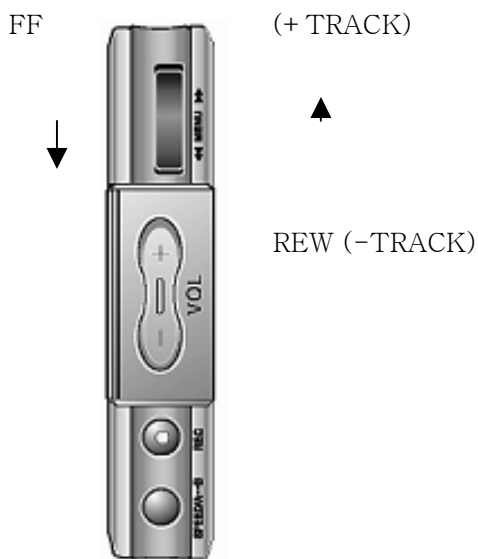
Menu dial moves (1) up and down, and 2 kinds of control are available by pushing it like (2).

Please control it according to the guide as below;

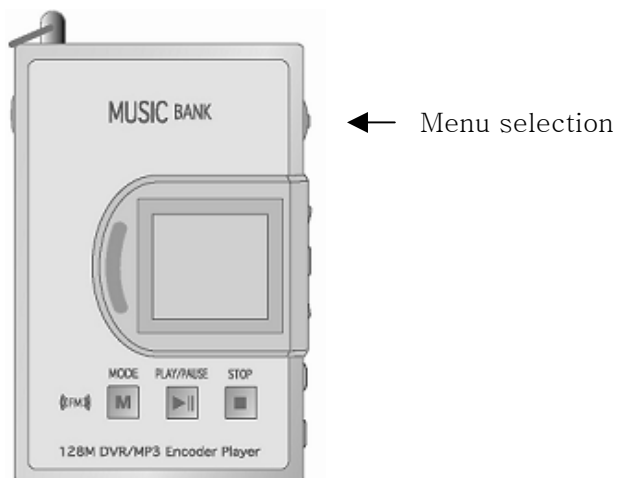
For searching menu, etc, follow (1), and then (2) for the next control.

Thus, the relevant menu is set.

(1) Move it up and down.

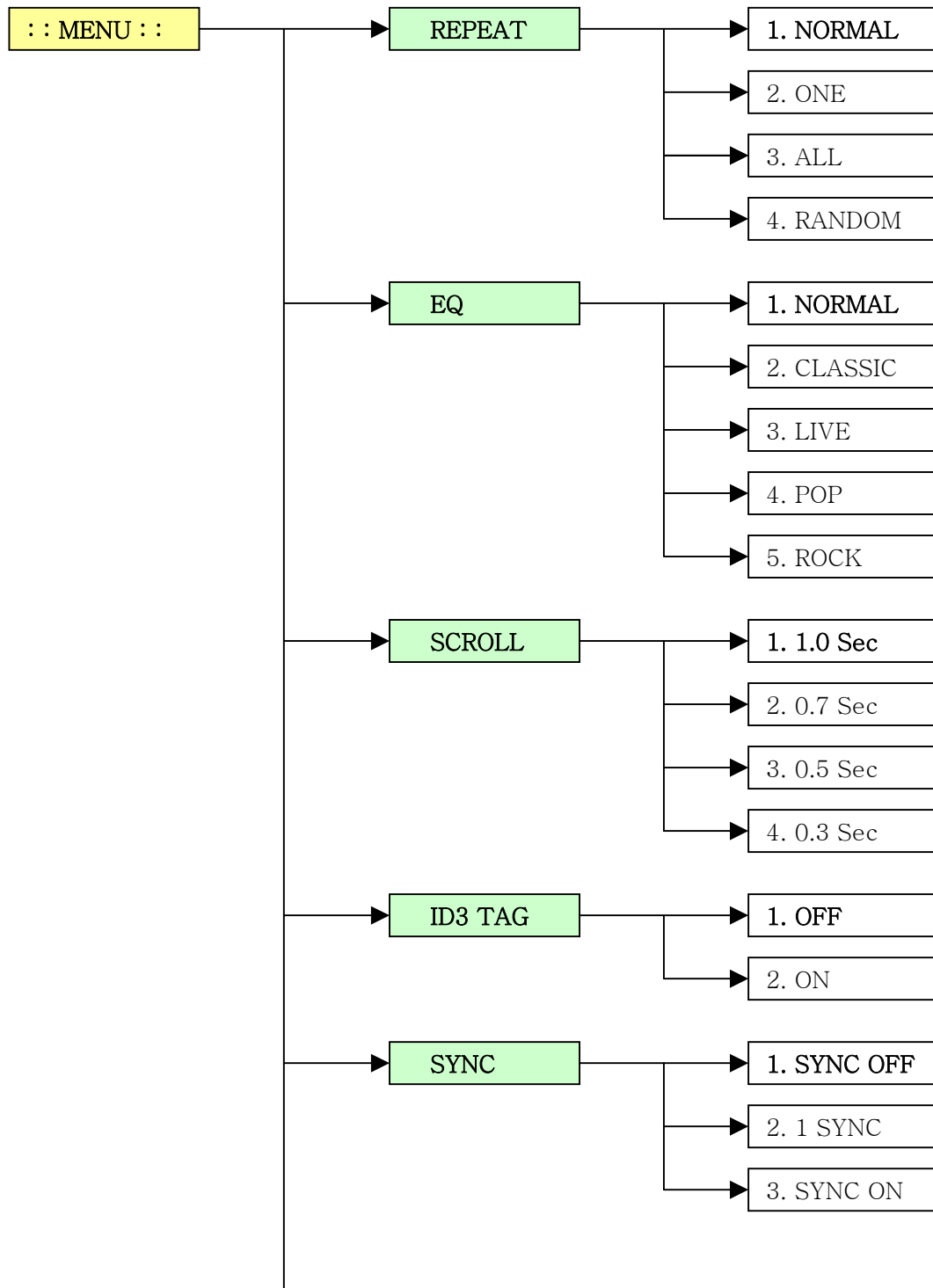


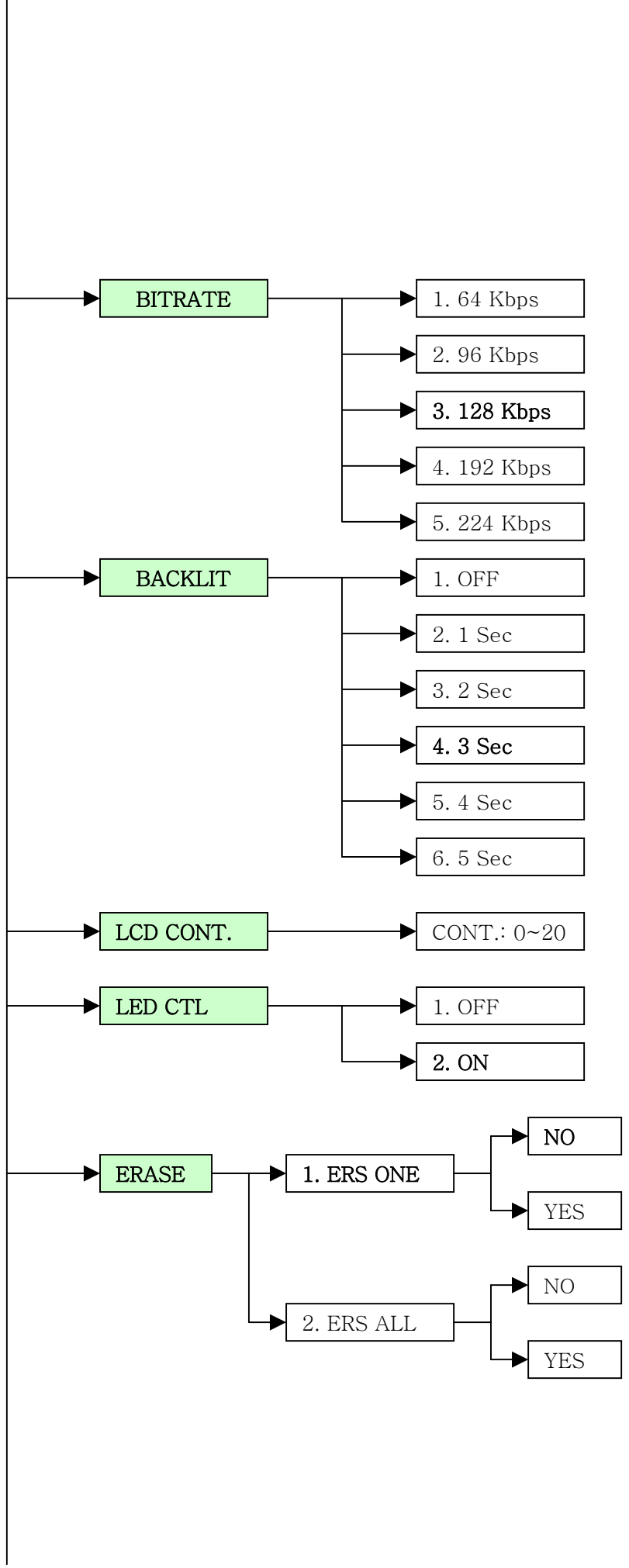
(2) Push it.

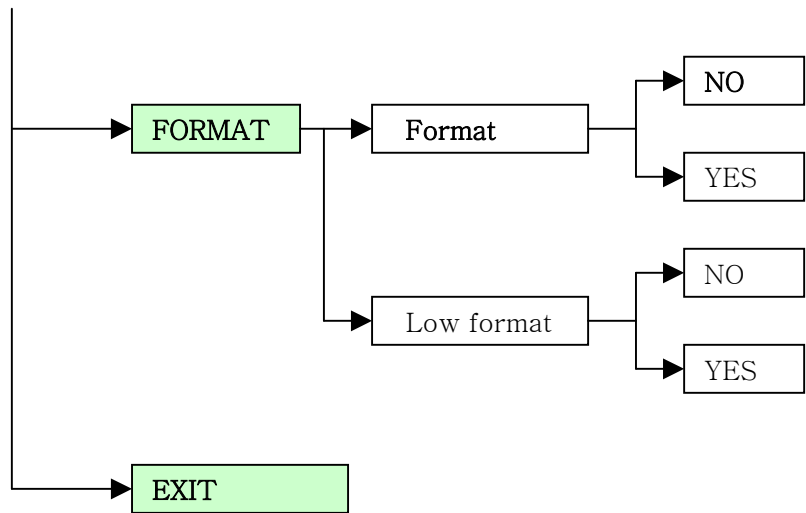


Menu table on stop position in audio and record mode

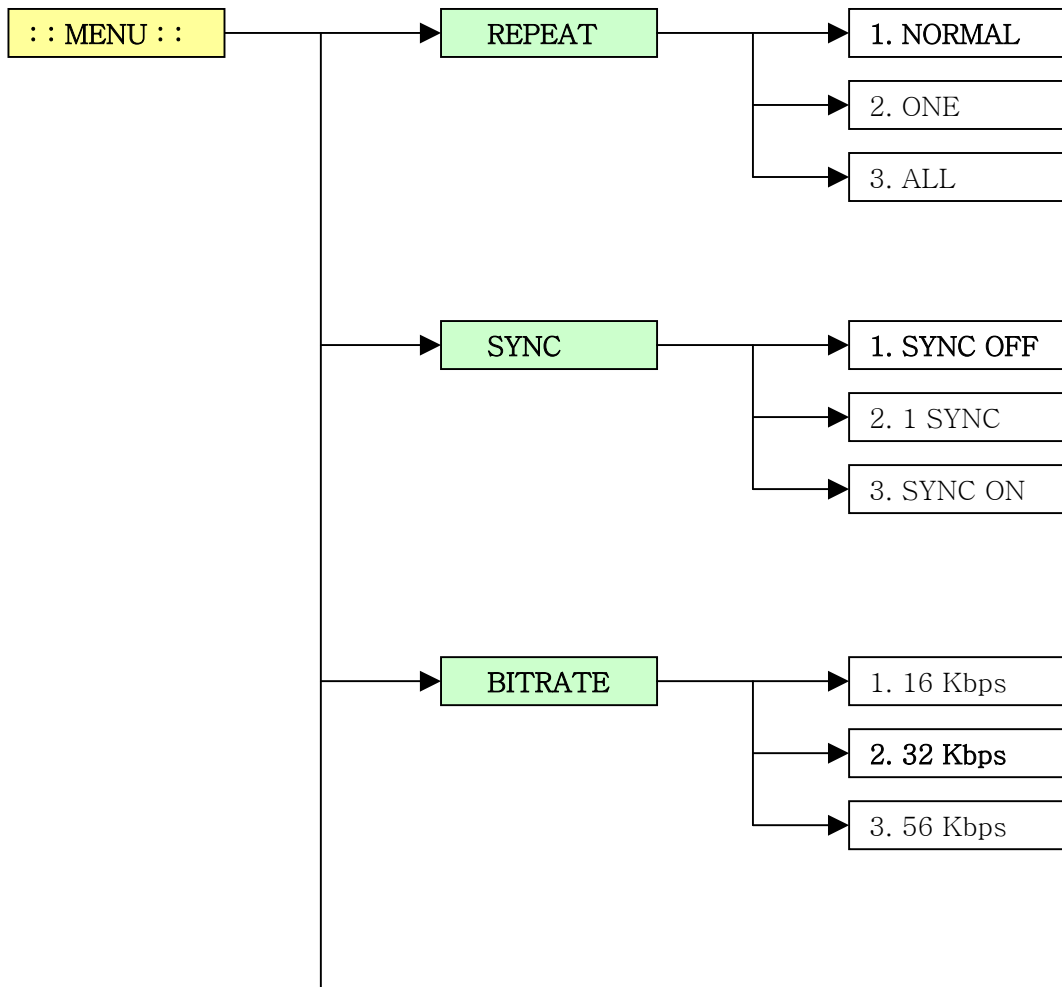
① Menu table on stop position in audio mode

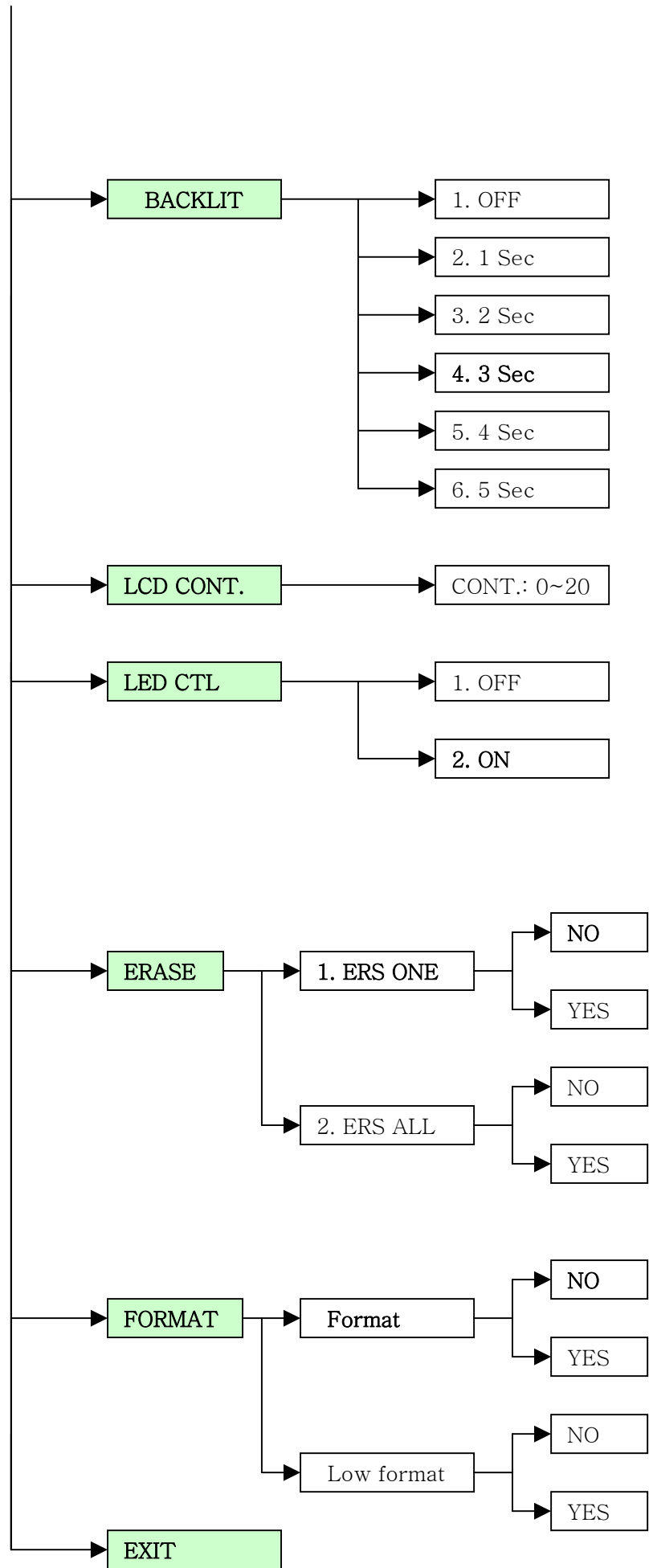






② Menu table on stop position in record mode





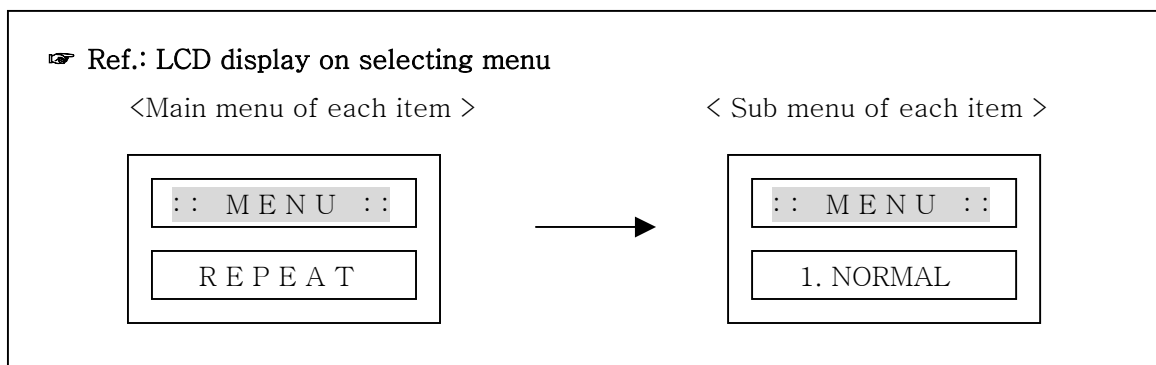
Description of items of each mode

◆ Main menu items of audio mode

REPEAT EQ SCROLL ID3 TAG SYNC BITRATE BACKLIT

LCD CONT. LED CTL ERASE FORMAT EXIT

For each menu selection and set up, use menu button, and for main menu move, move for sub menu selection and set up after selecting main menu, use FF and REW button.



1) REPEAT: To set repeat play of file

1. NORMAL: Play all the files in order and stop
2. ONE: Repeat play only selected file
3. ALL: Play all the files continuously in order
4. RANDOM: Play all the files continuously in random order

2) EQ

As it is the mode that equalizer can be selected, user can select wanted mode (1. NORMAL, 2. CLASSIC, 3. LIVE, 4. POP, 5. ROCK).

3) SCROLL

Display of file information on LCD can be set to 4 steps from 1SEC ~ 0.3SEC.
(speed: 1 SEC < 0.7 SEC < 0.5 SEC < 0.3 SEC)

4) ID3 TAG: To set up the method to display the information of the song on LCD.

1. OFF: To display the information of the song only as file name format
2. ON: To display the information of the song as ID3 TAG information when the song having tag information is played

5) SYNC: To set up recording method on external data input recording

1. SYNC OFF: To record all the songs, which are being inputted from external source until pushing stop button from the start of external data input, as 1 file
2. 1 SYNC: To record only the first song being input from external source and then stop
- 3. SYNC ON: To record and automatically classify all the songs being input from external source to each file**

6) BITRATE

1. As it is the function to control bit rate of recorded file for each use If you set the bit rate low, recording time increases, but sound quality is down, and If you set the bit rate high, recording time decreases, but sound quality is up. The set up in audio mode is 5 steps in range of 64Kbps ~ 224Kbps.

7) BACKLIT (BACK LIGHT): To set up back light on/off duration

1. OFF: Back light off even during key operation
2. 1 Sec: 1 SEC of Back light on during key operation
3. 2 Sec: 2 SEC of Back light on during key operation
4. 3 Sec: 3 SEC of Back light on during key operation
5. 4 Sec: 4 SEC of Back light on during key operation
6. 5 Sec: 5 SEC of Back light on during key operation

8) LCD CONT. (LCD CONTRAST)

1. As it is the function to control contrast of icon, control by 1 step in range of 01 ~ 20 is possible. (It is set to 10 steps on ex-factory)

9) LED CTL (LED CONTROL): ON/OFF of LED (flashing light in various colors) in play or record mode

1. OFF: LED OFF
2. ON: LED ON

10) ERASE: To erase files stored in memory

1. ERS ONE: To erase only 1 song shown on LCD before menu display
2. ERS ALL: To erase all the files of selected mode

11) FORMAT: To format the memory stored in the set

1. FORMAT: To reset memory fast
2. LOW FORMAT: To format memory while checking memory block for a longer time

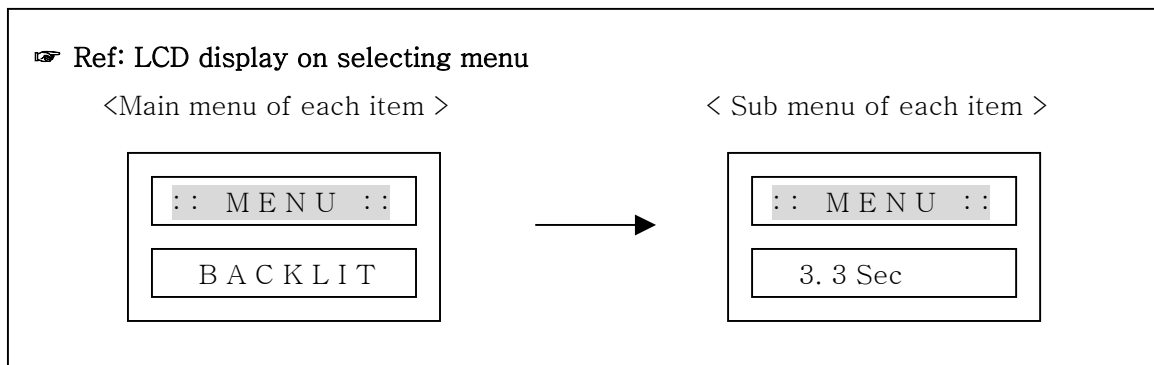
12) EXIT: To exit from menu

◆ Main menu items of record mode

REPEAT SYNC BITRATE BACKLIT LCD CONT. LED CTL

ERASE FORMAT EXIT

For each menu selection and set up, use menu button, and for main menu move, move for sub menu selection and set up after selecting main menu, use FF and REW button.



1) REPEAT: To set repeat play of file

1. NORMAL: Play all the files in order and stop
2. ONE: Repeat play only selected file
3. ALL: Play all the files continuously in order

2) SYNC: To set up recording method on external data input recording

1. SYNC OFF: To record all the songs, which are being inputted from external source until pushing stop button from the start of external data input, as 1 file
2. 1 SYNC: To record only the first song being input from external source and then stop
3. SYNC ON: To record and automatically classify all the songs being input

3) BITRATE

1. As it is the function to control bit rate of recorded file for each use. If you set the bit rate low, recording time increases, but sound quality is down, and if you set the bit rate high, recording time decreases, but sound quality is up. The set up in record mode is 3

steps, 16Kbps/32Kbps/ 56Kbps.

4) BACKLIT (BACK LIGHT): To set up back light on/off duration

1. OFF: Back light off even during key operation
2. 1 Sec: 1 SEC of Back light on during key operation
3. 2 Sec: 2 SEC of Back light on during key operation
4. 3 Sec: 3 SEC of Back light on during key operation
5. 4 Sec: 4 SEC of Back light on during key operation
6. 5 Sec: 5 SEC of Back light on during key operation

5) LCD CONT. (LCD CONTRAST)

1. As it is the function to control contrast of icon, control by 1 step in range of 01 ~ 20 is possible. (It is set to 10 steps on ex-factory)

6) LED CTL (LED CONTROL): ON/OFF of LED (flashing light in various colors) in play or record mode

1. OFF : LED OFF
2. ON : LED ON

7) ERASE: To erase files stored in memory

1. To erase only 1 song shown on LCD before menu display
2. ERS ALL: To erase all the files of selected mode

8) FORMAT: To format the memory stored in the set

1. FORMAT: To format memory fast
2. LOW FORMAT: To format memory while checking memory block for a longer time

9) EXIT: To exit from menu

How to connect the device to external device

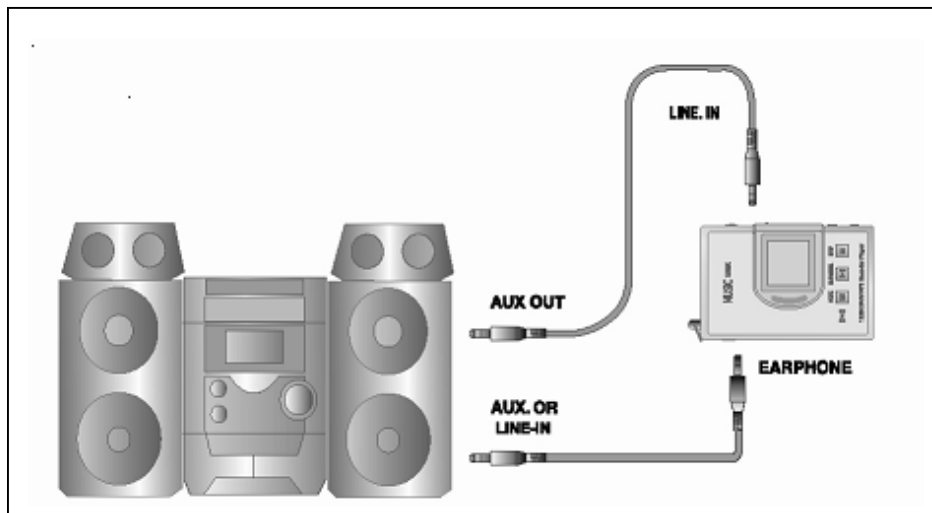
● Connecting to external device

Using audio cable you can record voice record stored in the device to a cassette, MD, etc.

● How to connect to audio

① In case of recording from external device to the device;
Plug in the audio cable to line in input terminal of the device.

② In case of recording from the device to external device;
Plug in the audio cable to line in input terminal of the device and mic or input terminal of external device.



How to connect to audio

※ Caution

- ★ In case of connecting to external device, please turn off power before hand.
- ★ Please read through this manual carefully before connecting to external device.

● In case of recording from external device

In case of recording from external device, please turn down volume and then, record

by connecting audio cable to the device.

On recording, set the volume in middle and do not change it.

● **In case of recording to external device**

Start recording of external device and playing the device simultaneously.

(As this timing is depending on the kinds of each device, do pretest for the operation of device.)

FM radio receiving function

* Having AUTO SEEK function, it is easy to control the device.

After selecting radio, if you push FF KEY or REW KEY for about 1 second, it stops at receivable channel.

When you use AUTO SEEK function, correct tuning may not be done, when you use fine tuning with REW or FF KEY.

● Radio tuning method

- ① By pushing mode button, select radio mode.
- ② LCD displays frequency. Select wanted frequency with FF/REW KEY.

● Channel storing method

- ① By pushing mode button, select radio mode.
- ② LCD displays frequency. Select wanted frequency with FF/REW KEY.
- ③ If you push play/pause button, channel 01 shown on frequency is out, when select wanted channel (01-10) with FF/REW KEY and push play button, selected channel is stored to channel 01 and frequency is displayed.

You can store up to CH10 with the same manner.

☞ Checking stored channel

If you push menu button in frequency mode, it changes to preset mode, and channel and frequency that are stored are displayed, when you select the stored channel with FF/REW KEY. If you push menu button again in frequency mode, it changes to preset mode and you can select frequency.

● How to record radio broadcast

Select the wanted channel with the same manner of ①~② of radio channel set up method.

Record it by pushing REC button. The message recorded at this time is stored to the next of the latest file recorded in audio mode.

You can not check the data of the file being recorded, but after stop in audio mode.

What is DIASONIC MP3 Explorer II ?

DIASONIC MP3 Explorer II send MP3 file of PC to the device or play MP3 file and is the manager program for DIASONIC MP3 player that manages recorded file (DMP) in the device. It has the features as below;

- To download/upload files to MP3 player - MP3, DMP and normal data files
- The same file managing function having the same structure with window search.
- To play MP3, WAV, DMP file
- WAV -> DMP mutual conversion
- DMP -> MP3 mutual conversion
- Mail sending function
- Easy Firmware upgrade function
- Convenient using method

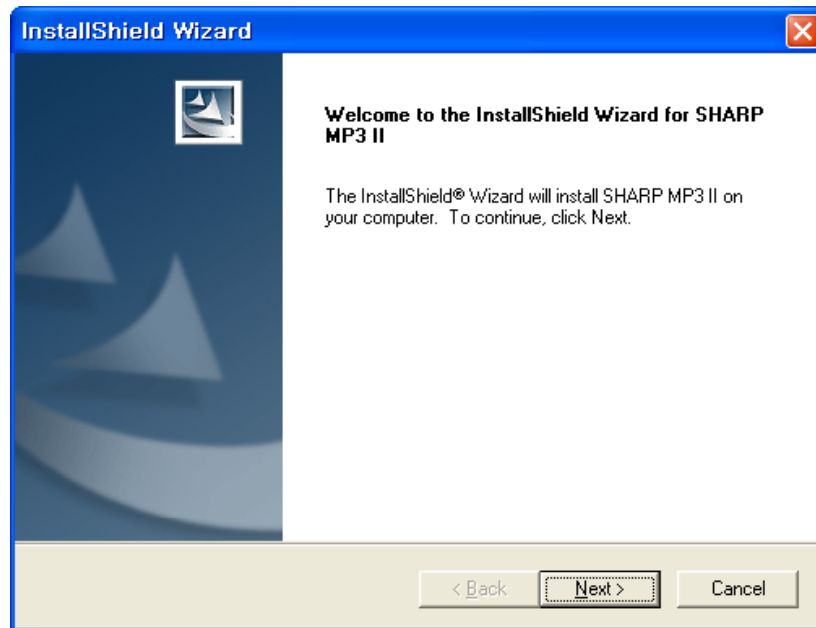
System requirement for DIASONIC MP3 Explorer II is as follow;

- Pentium 200MHz or more, IBM compatible
- 128MB memory or more
- 100MB or more of hard disk space
- 256bit color or more
- Win 98/ME/2000/XP(NT is not supported)
- USB port support
- CD-ROM drive
- Sound card, speaker or headphone

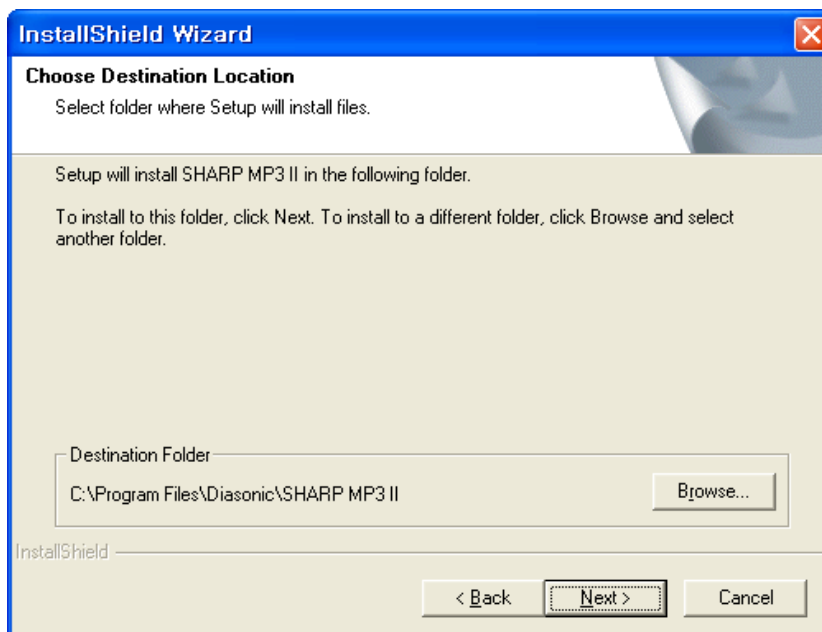
How to install DIASONIC MP3 Explorer II

1. If you load install CD into CD-ROM drive, install program is automatically executed. If not, please execute the execute file, "CD-ROM:WSetup.exe". Install is automatically executed and if you just click in order as shown in the pictures as below, install is completed.

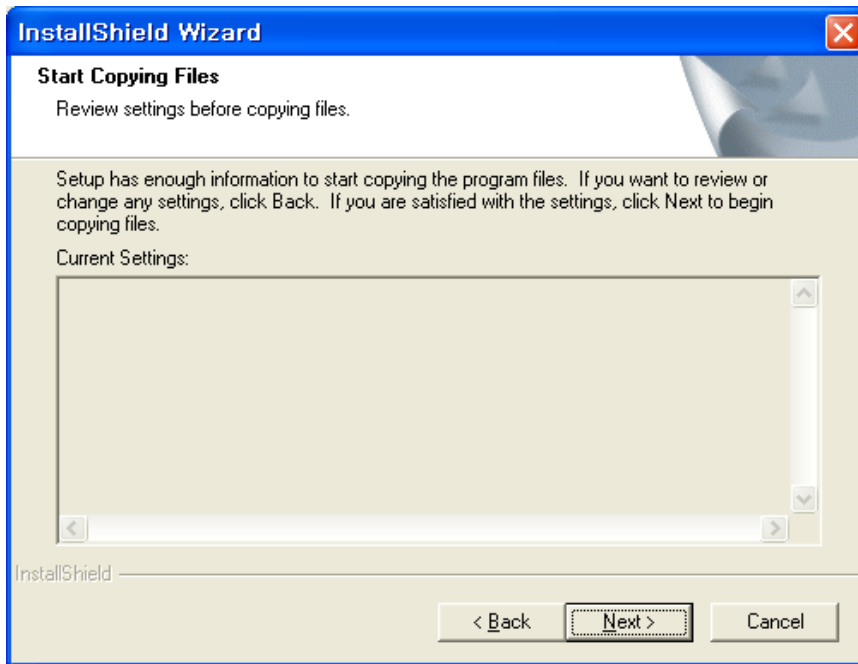
①



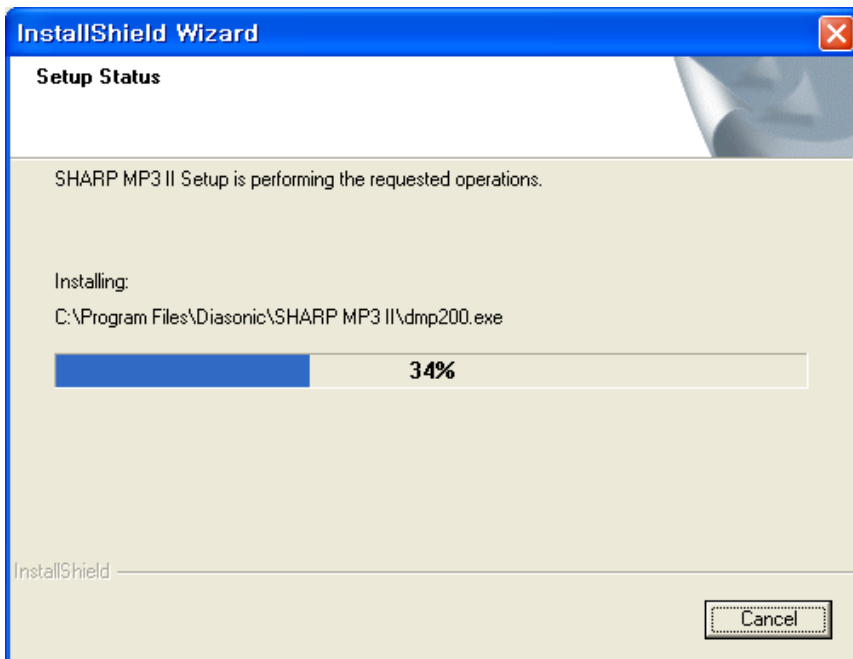
②



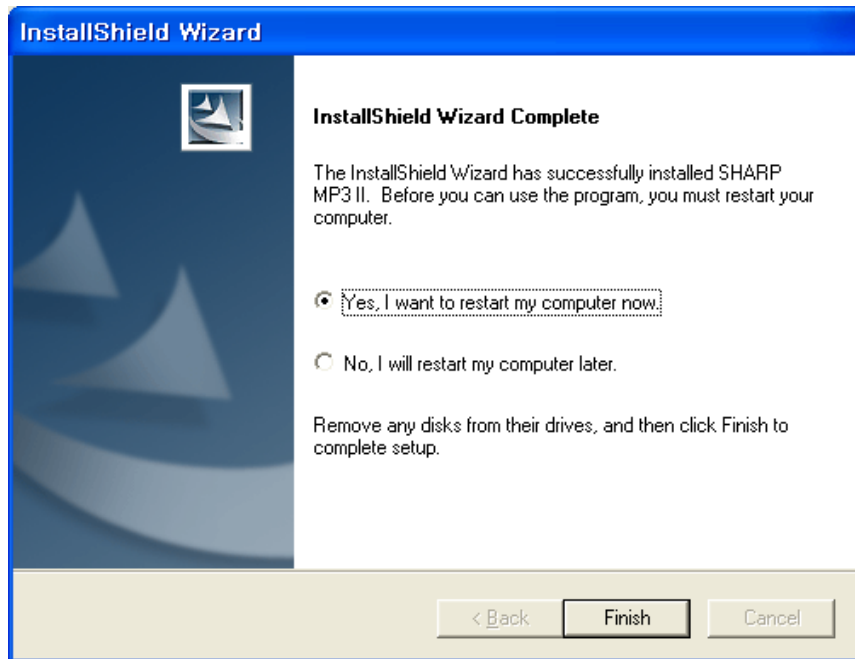
③



④



⑤

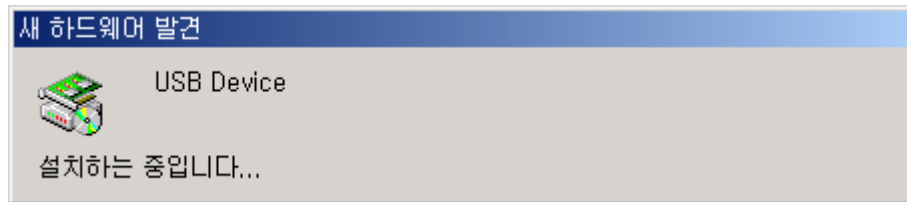


⑥ If you click [Finish] and restart PC, install is completed.

☞ To erase DIASONIC MP3 II, you can do it by selecting [Start]-[Settings]-[Control Panel]-[Add/Remove Programs]- [DIASONIC MP3 II].

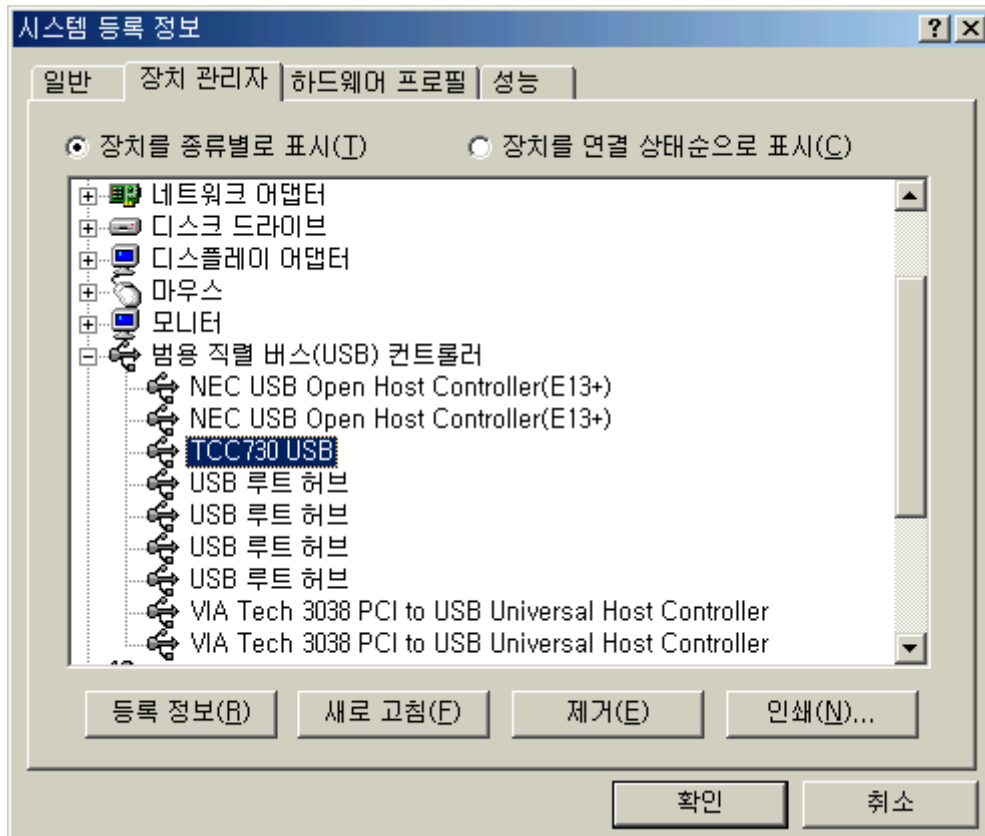
HOW TO INSTALL USB DRIVER

1. If you connect MP3 PLAYER to PC using USB cable enclosed with the set after completion of program install, picture as below is shown and USB driver is automatically installed.



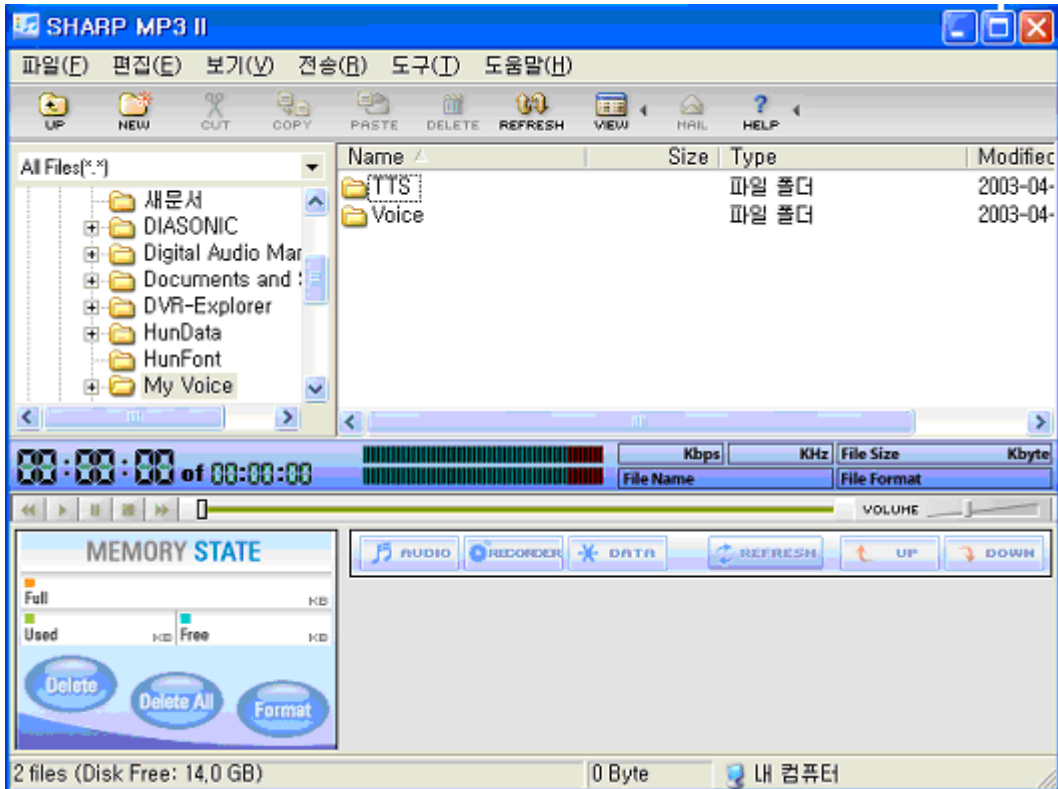
☞ If USB driver is once installed through the procedure above, you need not install it next time as it is automatically recognized.

2. You can check installed status in Device Manager of My Computer after completion of USB driver install



Configuration of DIASONICMP3Explorer II

Screen of DIASONIC MP3 II



1) Description for basic function



- ①
- ②
- ③
- ④
- ⑤
- ⑥
- ⑦
- ⑧
- ⑨
- ⑩

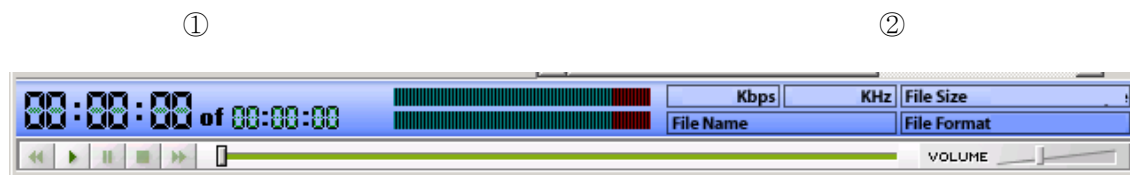
- ① To go back to the latest executing position on Search Screen
- ② To make a new folder (Working directory) on Search File Screen
- ③ To cut and store a folder or a file into Clip Board
- ④ To copy and store a folder or a file into Clip Board
- ⑤ To paste a folder or a file copied or cut by user to designated position
- ⑥ To delete a folder or a file. A folder or a file deleted move to Recycle Bin.
- ⑦ To rearrange the contents of Search Screen

⑧ To change a folder or a file displayed on Search Screen to Big Icon, Small Icon and Detail View

⑨ To send a file or other file of record mode being attached to e-mail

⑩ To display Help Dialogue Box for the main menu of **DIASONIC MP3 II**

2) Description for play



① To display play time/recording time of selected file

② To display information of selected file

③ To move fast to previous portion of the file currently being played. It moves 1/10 of the length of the file per a click.

④ To play the selected file

⑤ To pause the file currently being played

⑥ To stop the file currently being played

⑦ To move fast to next portion of the file currently being played. It moves 1/10 of the length of the file per a click.

⑧ Playing position is displayed as a bar. If you move cursor to a position and click, the bar moves to the position. You can play as you move a position with mouse.

⑨ Volume control button

3) Description for file converting function

① Conversion A (*.WAV -> *.DMP)

It converts *.WAV format file to *.DMP format file.

Select a file to be converted and push file converting button in file menu, then, the selected file is converted to *.DMP format file and stored in the current folder.

② Conversion B (*.DMP -> *.MP3)

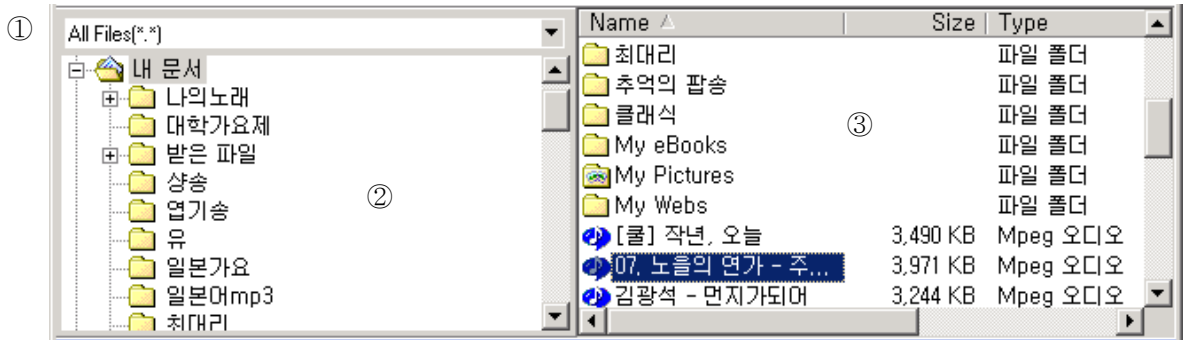
It converts *.DMP format file to *.MP3 format file.

Select a file to be converted and push file converting button in file menu, then, the selected file is converted to *.MP3 format file and stored in the current folder.

As due to compression loss, 2 times or more of conversion lower the sharpness of

original sound, please escape from frequent conversion, and if it inescapable, you better store original file.

4) Description of other management screen



- ① Define the file to be displayed.
- ② Computer information and the contents of the folder are displayed.
- ③ **File management screen:** It shows computer information and the sub contents of the folder.



- ④ It shows the full size of memory of MP3 player.
- ⑤ It shows the size of memory of MP3 player currently being used.
- ⑥ It shows the size of memory available in MP3 player.
- ⑦ **Flash memory management screen:** It shows the files stored in the selected folder (audio, recorder, data) including name, order, file size and type.



⑧ **Folder management screen:** It shows the contents (*.MP3) stored in audio mode of MP3 player.

⑨ **Folder management screen:** It shows the contents (*.DMP) stored in record mode of MP3 player.



⑩ **Folder management screen:** It shows the general data stored in MP3 player.

⑪ It moves *.DMP stored in MP3 player to PC (upload).

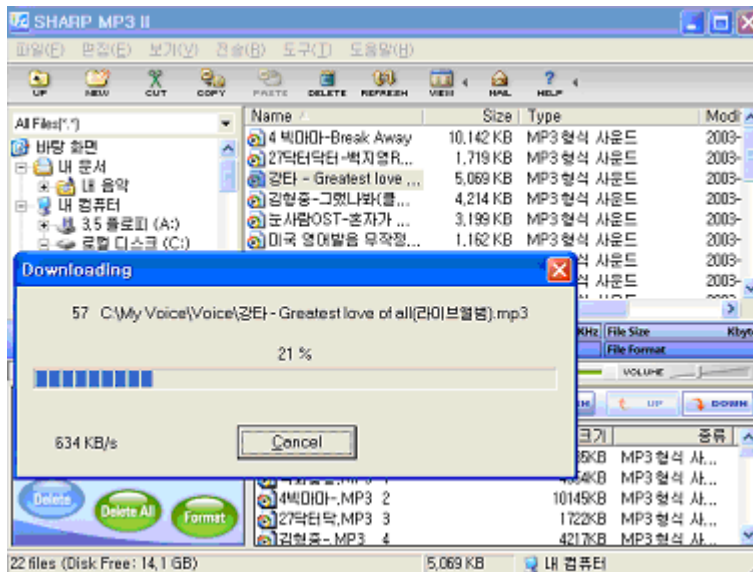
⑫ It moves files stored in PC to MP3 player (upload).

👁 **MP3 file shall not be uploaded in accordance with Copyright.**

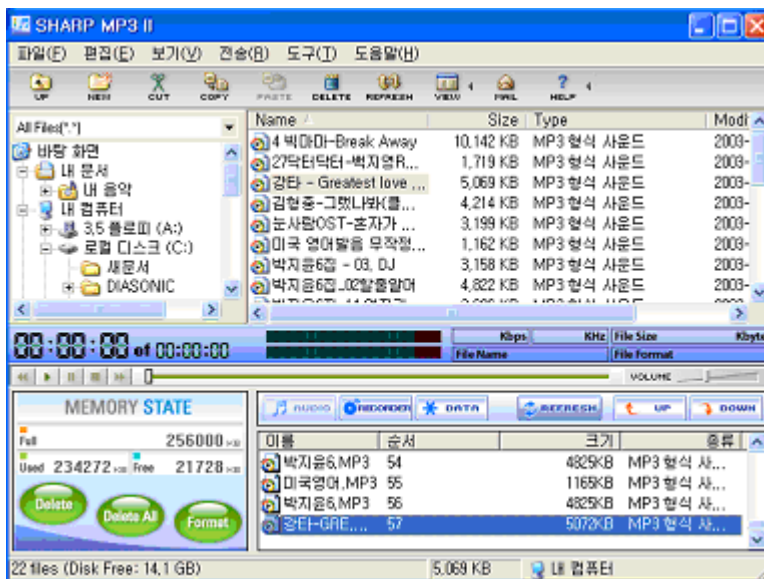
Sending MP3 file

It is very simple. Select MP3 file and then  in file management window above. After that, click  icon in flash memory management window and then it is completed as below;

1. Select MP3 file to be sent and  icon, the file is sent to flash memory as below;





2. When sending is completed, sent file is displayed on flash memory management window.




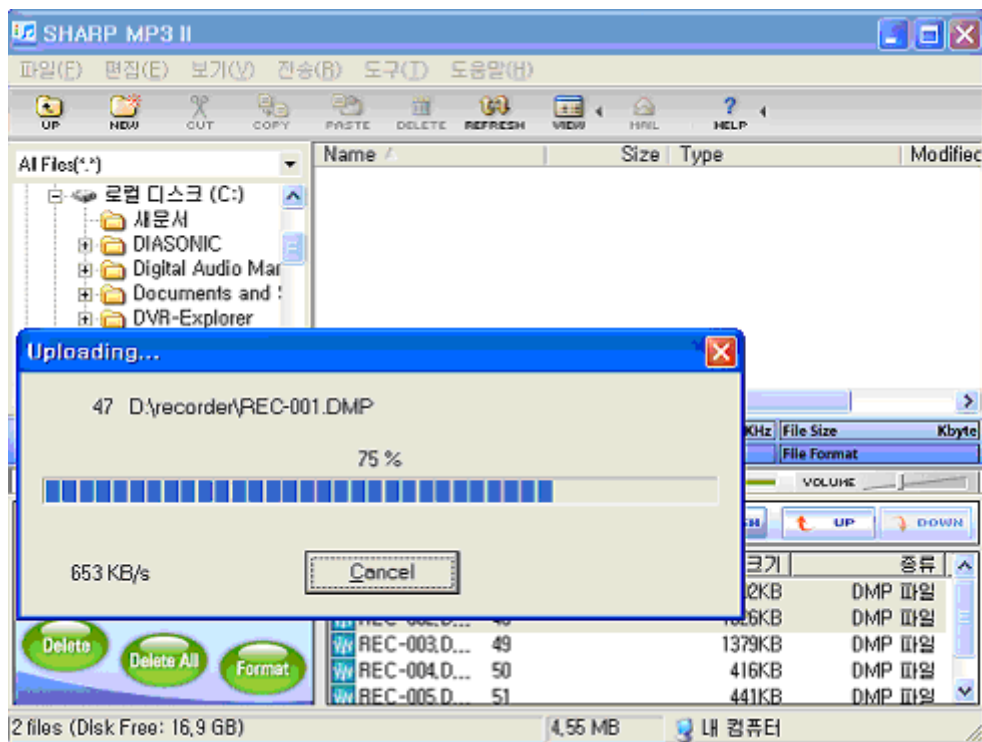
👁 Only *.MP3 and *.WMA file can be sent to music folder of MP3 player and *.DMP to voice folder. And various files with various kinds of extender can be stored in data folder.

👁 Caution: Do not disconnect USB cable during sending file.

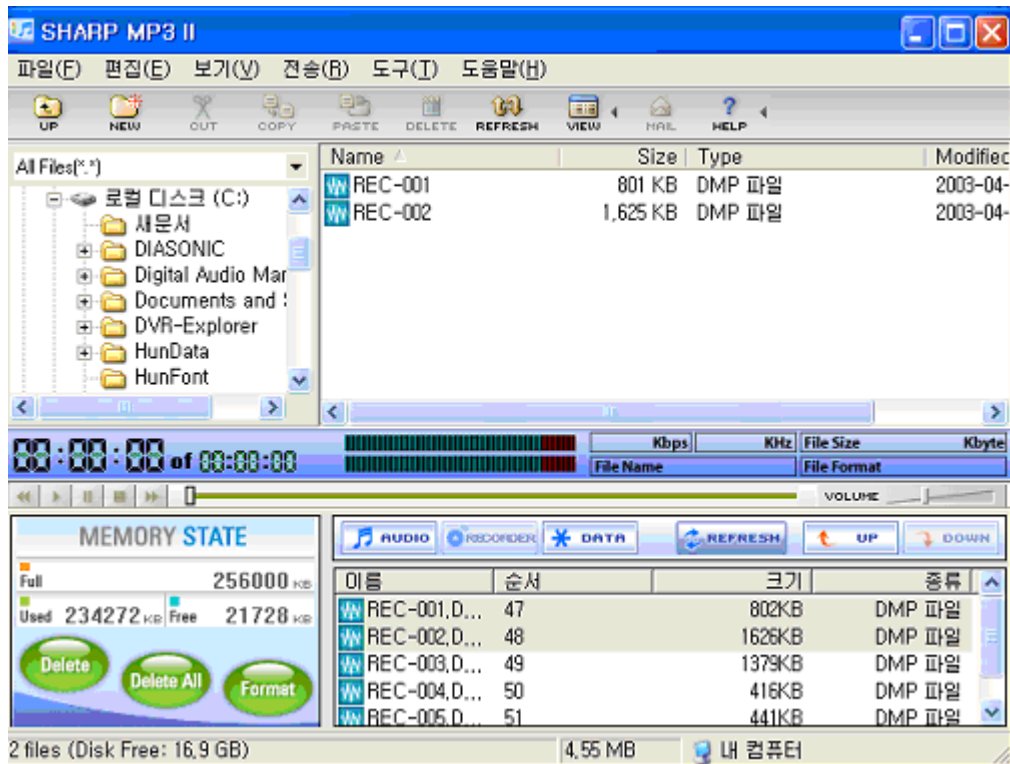
Sending DMP file through PC

It is very simple. Select  in folder management window above, DMP file to be sent in flash memory management window and click  icon in flash memory management window, then it is completed.

1. Select DMP file in flash memory management window and click  icon, then the file is sent to designated directory of file management window.



2. When sending is completed, sent file is displayed on file management window.



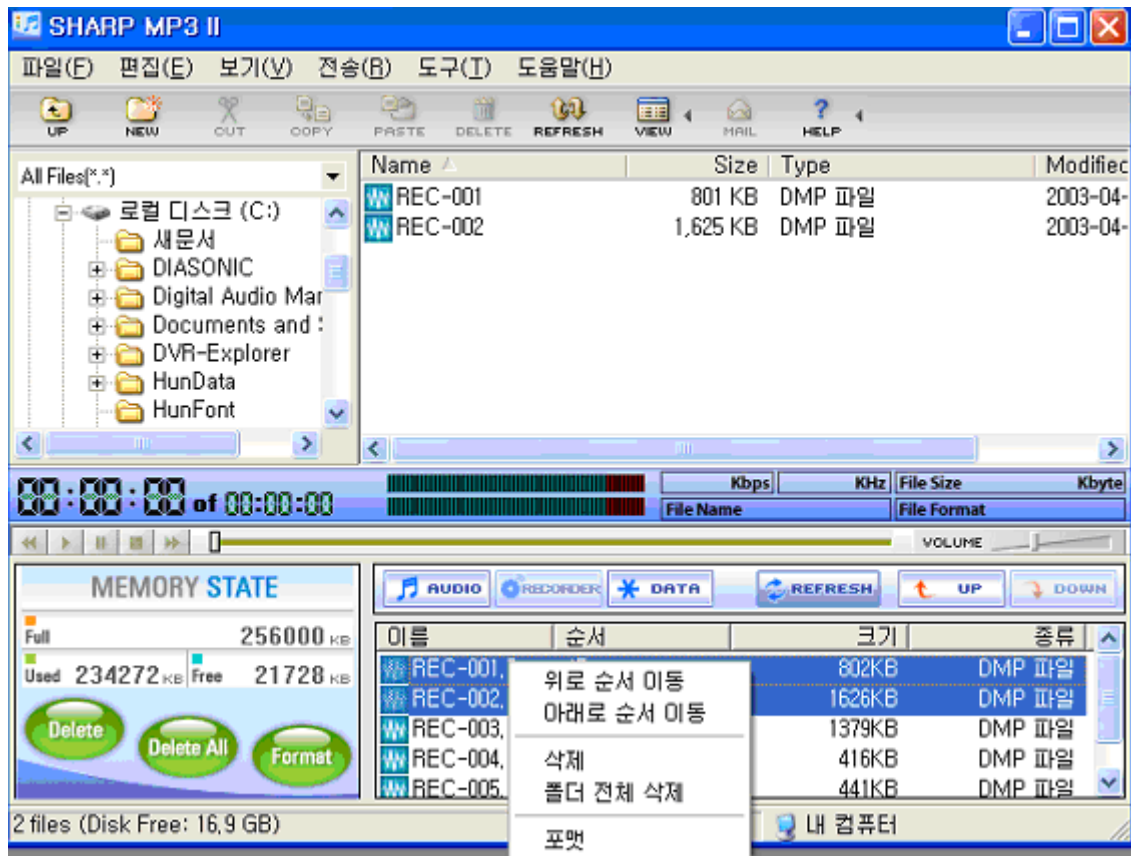
MP3 file shall not be uploaded in accordance with Copyright.

Caution: Do not disconnect USB cable during sending file.

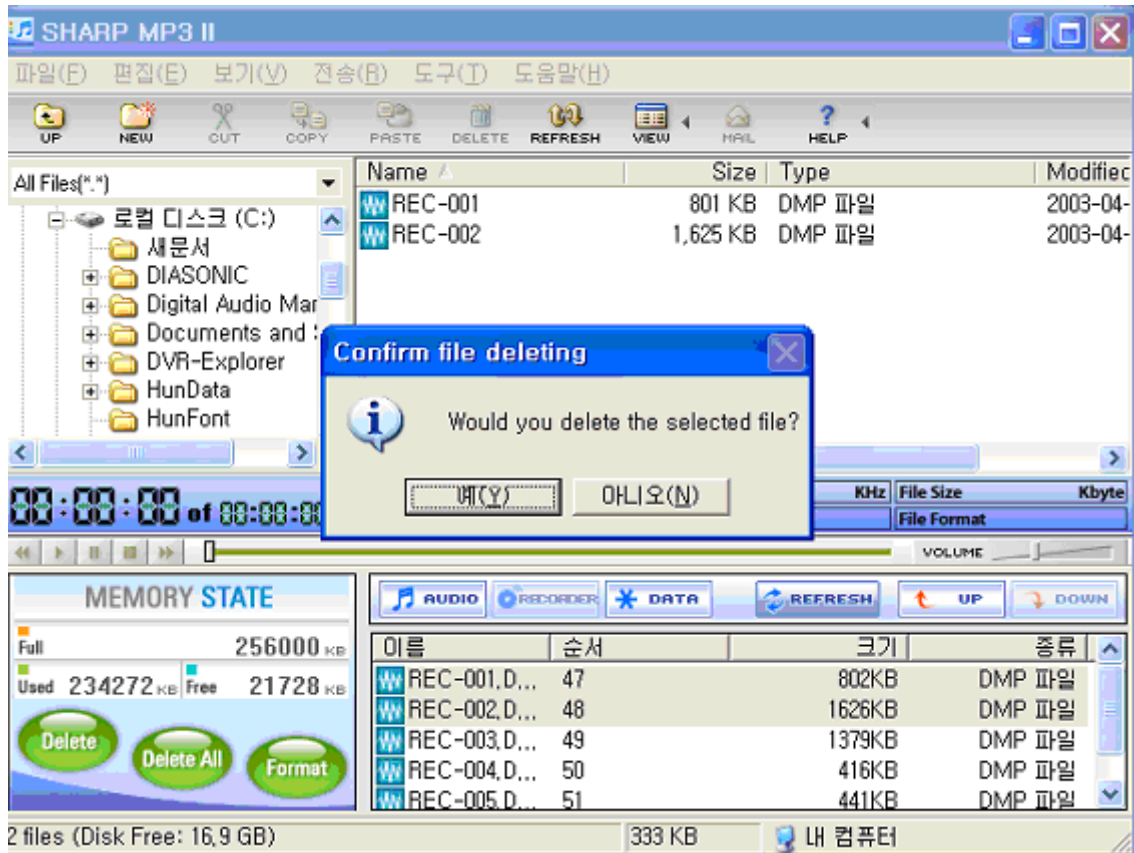
Erasing MP3 file and DMP file

The method to erase MP3 file and DMP file stored in flash memory of MP3 player is the same with the one of erasing method in the searcher. Select one or more file stored flash memory with the left button of mouse and click, when if you select to erase the file, the file is erased from flash memory management window and the file stored flash memory is erased.

1. If you select the file to be erased and push the right button of mouse, then it is displayed as below;



2. Confirmation for the erase is checked again. To erase the file, click 'Yes'.



3. After for a while, the file selected from flash memory is erased

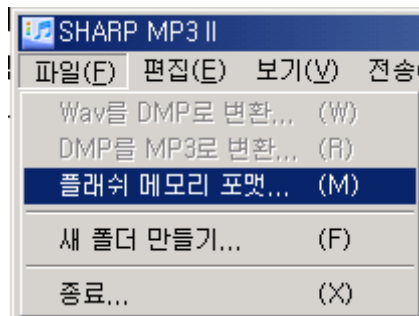
☞ Caution) 1. Deleted file can not be recovered. Be careful for the deletion.

2. Caution: Do not disconnect USB cable during sending file.

Flash memory format

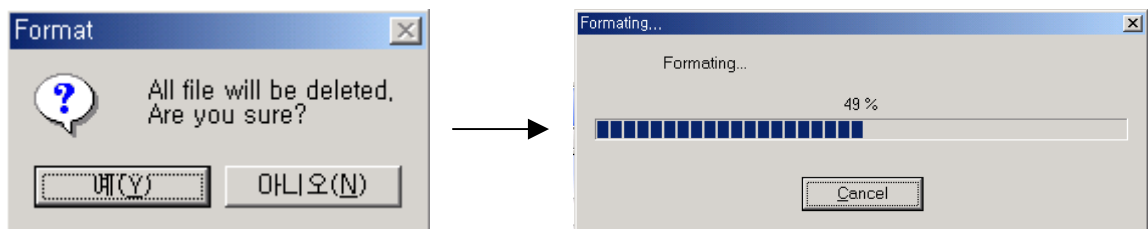
As like hard disk formatting, flash memory used in the device is also formatted. If you do format flash memory, all the data stored in memory disappears.

1. Select [file] – [flash memory format] in the menu of DIASONIC MP3 II.



Select vacant space in flash memory management screen and click the right button of mouse, then popup menu appears. You can do format in the menu too.

2. Format box appears as below and when you click 'Yes', format starts.



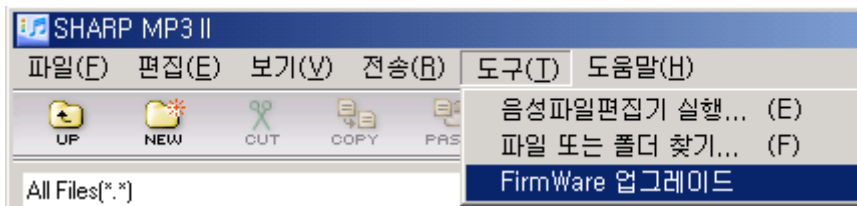
- Caution) 1. Deleted file can not be recovered. Be careful for the deletion.
2. Caution: Do not disconnect USB cable during sending file.

FirmWare Upgrade

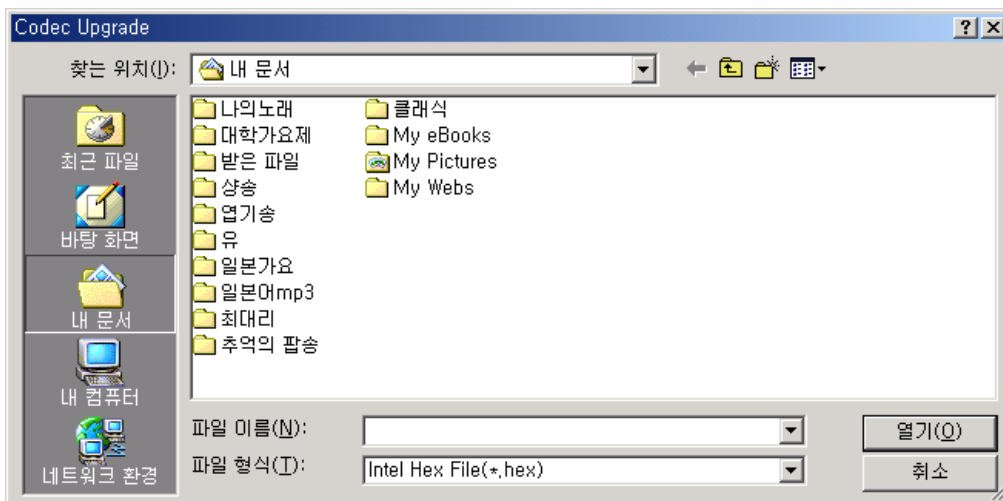
It is simple to upgrade FirmWare.

Upgrade order is as below;

1. Select [tool] – [FirmWare Upgrade] in the menu of DIASONIC MP3 II.

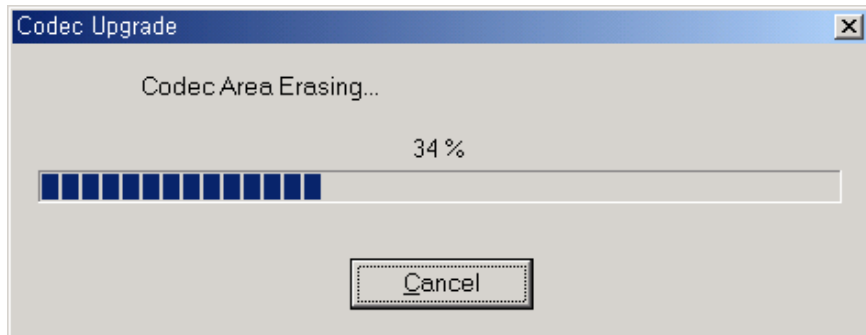


2. When the window as below shows, define pass of the relevant FirmWare Upgrade File(*.hex) and click [open].

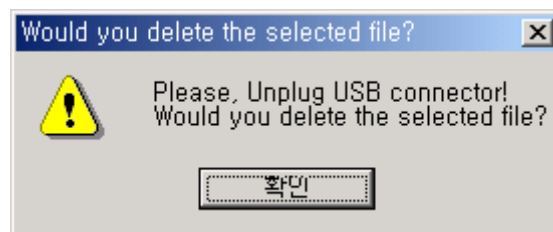


3. When you click [open] button, the window as below displayed and FirmWare

Upgrade proceeds.



4. When FirmWare Upgrade is completed, the dialogue box as below appears. Click 'Yes', disconnect USB cable and restart the device, then upgrade is completed.



Specification

Classification	Item		Specification	
MP3	Model name		SMP-200EN	
	Play file format	MPEG 1/2/2.5 layers	32 ~ 320 Kbps	
		WMA	64 ~ 192 Kbps	
	Media		128M or 256M	
	File Q'TY		256ea (MP3 + WMA)	
	Channel		Stereo	
	Frequency response		20Hz ~ 20KHz	
	Distortion		0.3 ± 0.05 (1KHz 0dB input)	
	Signal to noise ratio		80dB (1KHz 0dB input at use LPF 30KHz)	
	Earphone output		5mW (L) + 5mW(R): 16Ω Max. volume	
	Download speed		Max. 4Mbps (500Kbyte)	
	EQ		Normal, Classic, Live, POP, Rock	
	Searching play (Intro function)		Play 10 SEC per each track	
	Repeat play		1 song play, all song play, all song repeat play, block repeat play, random play	
	Play speed		Fast (115%), normal (100%), slow (80%)	
Recording	Recording method		Built in Mic or stereo line in cable	
	File Q'ty		256EA	
	CD SYNC. Function (when use line in)		SYNC, 1 SYNC, SYNC off (normal)	
	Time	128M	Audio mode	Max. 260min. (64Kbps), 70 Max. min. (224Kbps)
			Record mode	Max. 1060min. (16Kbps), 300 Max. min. (56Kbps)

	256M	Audio mode	Max. 520min. (64Kbps), 140 Max. min. (224Kbps)
		Record mode	Max. 2120min. (16Kbps), 600 Max. min. (56Kbps)
	Sound quality	Audio mode	44.1 KHz sampling 64Kbps ~ 224Kbps
		Record mode	16 KHz sampling 16Kbps/32Kbps/56Kbps
FM radio mode		16 KHz 56Kbps	
	Frequency range		International standard 87.5 ~ 108 MHz
FM radio (stereo)	Earphone output		5mW (L) + 5mW(R): 16Ω Max. volume
	Signal to noise ratio		55dB at 1mV 98.1MHz
	Receiving type		Earphone cord antenna
LCD	Panel		FSTN, 0.45T (total 1.5m/m Max)
	Resolution		80 X 16 2 line with icon
	Back light		Blue
	Language		Korean, English, Japanese, Chinese, etc
PC interface	Communication		USB V 1.1
	System configuration		CUP 200Mhz or more, RAM 64M or more
			20M or more of hard disk space available
			CD-ROM drive, USB port (1 type)
	Sound card		Sound blaster 16 compatible
	Earphone		Φ5.5 earphone stereo IMP less than 16Ω
	Display		Resolution 640 x 480 or more
	OS		Win 98/98SE/2000/ME/XP

Classification	Item	Specification
FirmWare upgrade	USB port	Support
Power supply	Power: 1.5V	LR03 Alkaline battery 1EA (“AAA” size or UM-4)
		DC adaptor (DC 3V 200mA)
Battery duration	MP3 play	7Hours (128Kbps, middle volume)
General items	Volume	Digital volume (30 steps)
	LED	2 color LED X 3EA
	Key spec.	Mode, play/pause, stop, menu, FF, hold
		REW, volume+ /-, record, play speed/block repeat
	Accessories	External device connecting cable (1EA)/install CD (1EA)/neck strap (1EA)/stereo earphone (1EA)/battery (1EA)/USB cable (1EA)/manual 1EA
	Dimension	44.4 (W)X 68 (H) X 12.9 (D) mm
	Weight	(g) excluding battery

A/S

When there is a malfunction of the device during use

Please contact a dealer or Diasonic.

Phone: 82-31-474-0852 / Fax: 82-31-474-0856 / E-mail: diasonic@diasonic.com

Warranty Card (rule)

- You can have free service repair in accordance with the rule as below,

When there is a malfunction of the device during use within validity, please apply for repair service to the service center or the dealer with this warranty card.

If purchasing date, the name of the dealer, etc, are missed on the warranty card, it is not valid. You must check the contents and when there are missed items, ask the dealer for that.

This card is not delivered again, so please keep it carefully.

<Rules on free A/S service>

1. The device is made under the strict quality control and test procedure.
2. When malfunction of the device happens as though you use it properly within validity, the dealer or the manufacturer provides you free A/S service.
3. The cases below are charged even in validity;
 - 1) No warranty card
 - 2) When purchasing date, the name of the dealer, etc, are missed on the card or the contents are corrected randomly
 - 3) For any damage arising from misuse
 - 4) For any damage arising from repair or modification done by user
 - 5) For any damage arising from a fire, environmental pollution, earthquake, storm and flood and other natural disaster.
 - 6) For any damage arising from battery leakage
 - 7) When battery is exhausted and battery exchange is needed
4. This warranty card is valid within Korea

(Caution on shipping)

When shipping, please care the items below;

1. If warranty card is within the validity, please envelop it into the product box.
2. Please do care to protect the product from any damage arising from shipping by wrapping the product with shock-absorbing material. Postage, wrapping cost, etc, are on customer.
3. To prohibit loss, please use registered mail.

WARRANTY CARD

Product name: MP3 PLAYER

MODEL: DMP-200EN

Validity: 1year

Purchasing date:

Purchaser	Name	
	Address	
	Phone	
Dealer	Name	
	Address	
	Phone	

- For any malfunction of the device, please contact a dealer or Diasonic.
 - Compensation rule for exchange, repair (charge/free), refund and part exchange is in accordance with that of the Consumer Protection Law.

DIASONIC Co., Ltd.

- Address: 321-43, Seoksoo-dong, Manan-gu, Anyang-si, Gyeonggi-do
 - Contact:
 - Phone: 82-31-474-0852
 - Fax: 82-31-474-0852
 - E-MAIL: diasonic@diasonic.com
- Homepage : <http://www.diasonic.com>

This warranty card is valid within Korea and as it is essentially needed for repair service, please keep it properly.