

Appendix C - User's Manual

FCC NOTICE

THIS DEVICE COMPLIES WITH PART 15 OF THE FCC RULES.
OPERATION IS SUBJECT TO THE FOLLOWING TWO CONDITIONS:
(1) THIS DEVICE MAY NOT CAUSE HARMFUL INTERFERENCE, AND
(2) THIS DEVICE MUST ACCEPT ANY INTERFERENCE RECEIVED,
INCLUDING INTERFERENCE THAT MAY CAUSE UNDERSIRED
OPERATION.

This equipment has been tested and found to comply with the limits for a Class B digital device, pursuant to part 15 of the FCC Rules. These limits are designed to provide reasonable protection against harmful interference in a residential installation. This equipment generates, uses and can radiate radio frequency energy and, if not installed and used in accordance with the instructions, may cause harmful interference to radio communication. However, there is no guarantee that interference will not occur in a particular installation. If this equipment does cause harmful interference to radio or television reception, which can be determined by turning the equipment off and on, the user is encouraged to try to correct the interference by one or more of the following measures :

- Reorient or relocate the receiving antenna.
- Increase the separation between the equipment and receiver.
- Connect the equipment into an outlet on a circuit different from that to which the receiver is connected.
- Consult the dealer or an experienced radio/TV technician for help.

NOTE : The manufacturer is not responsible for any radio or TV interference caused by unauthorized modifications to this equipment. Such modifications could void the user's authority to operate the equipment.



Digitech Systems co.,Ltd

673-17 Seonggok-dong, Ansan, Kyunggido, Korea

Tel : (031) 319-8076~8

Fax : (031) 319-8079

Website : www.digitechsys.co.kr

POWER OF ATTORNEY

DATE : September 10, 2002 .

**Federal Communications Commission
Authorization and Evaluation Division
7435 Oskland Mills Road
Columbia, MD 21046**

To Whom It May Concern :

We the undersigned, hereby authorize TIMCO ENGINEERING, INC. on our behalf, to apply to the FEDERAL COMMUNICATIONS COMMISSION on our equipment. Any and all acts carried out by TIMCO ENGINEERING, INC. on our behalf shall have the same effect as acts of our own. This authorization expires on September 10, 2003.

This is to advise that we are in full compliance with the Anti-Drug Abuse Act. We, the applicant, are not subject to a denial of federal benefits pursuant to Section 5301 of the Anti-Drug Act of 1988, 21 USC853a, and no party to the application is subject to a denial of federal benefits pursuant to that section.

DigiTech Systems co.,Ltd

Chong Bo Shim / Chief Engineer / R&D center

(Authorized signature)



Digitech Systems co.,Ltd

673-17 Seonggok-dong, Ansan, Kyunggi-do, Korea

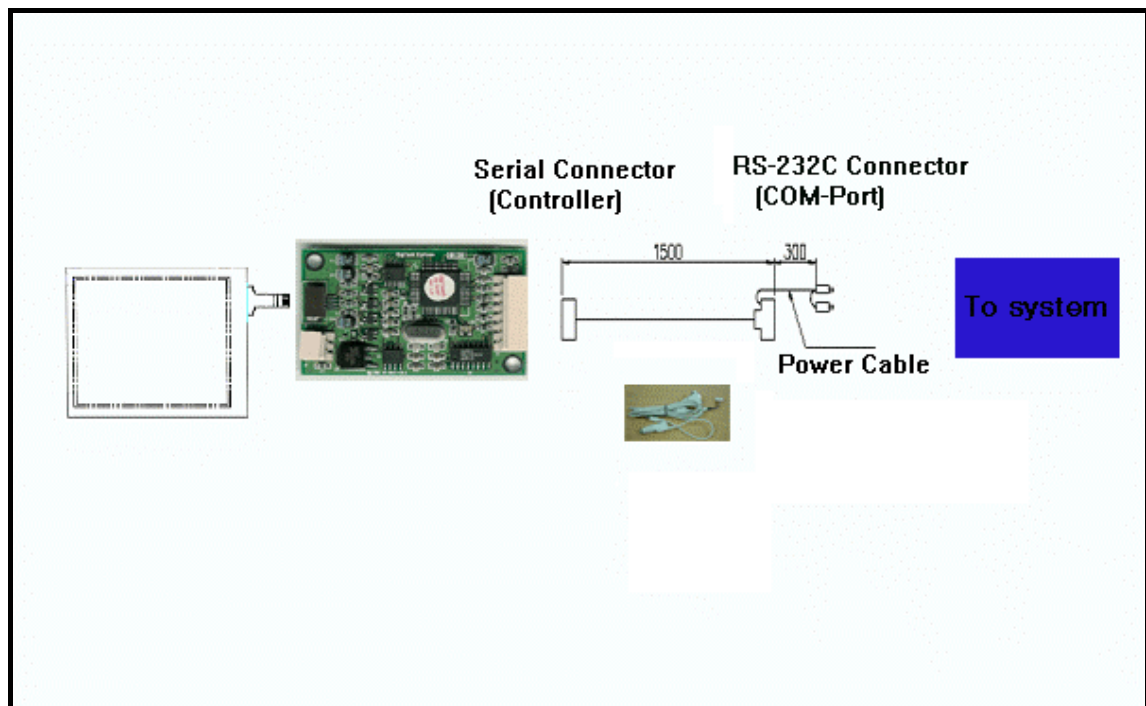
Tel : (031) 319-8076 8

Fax : (031) 319-8079

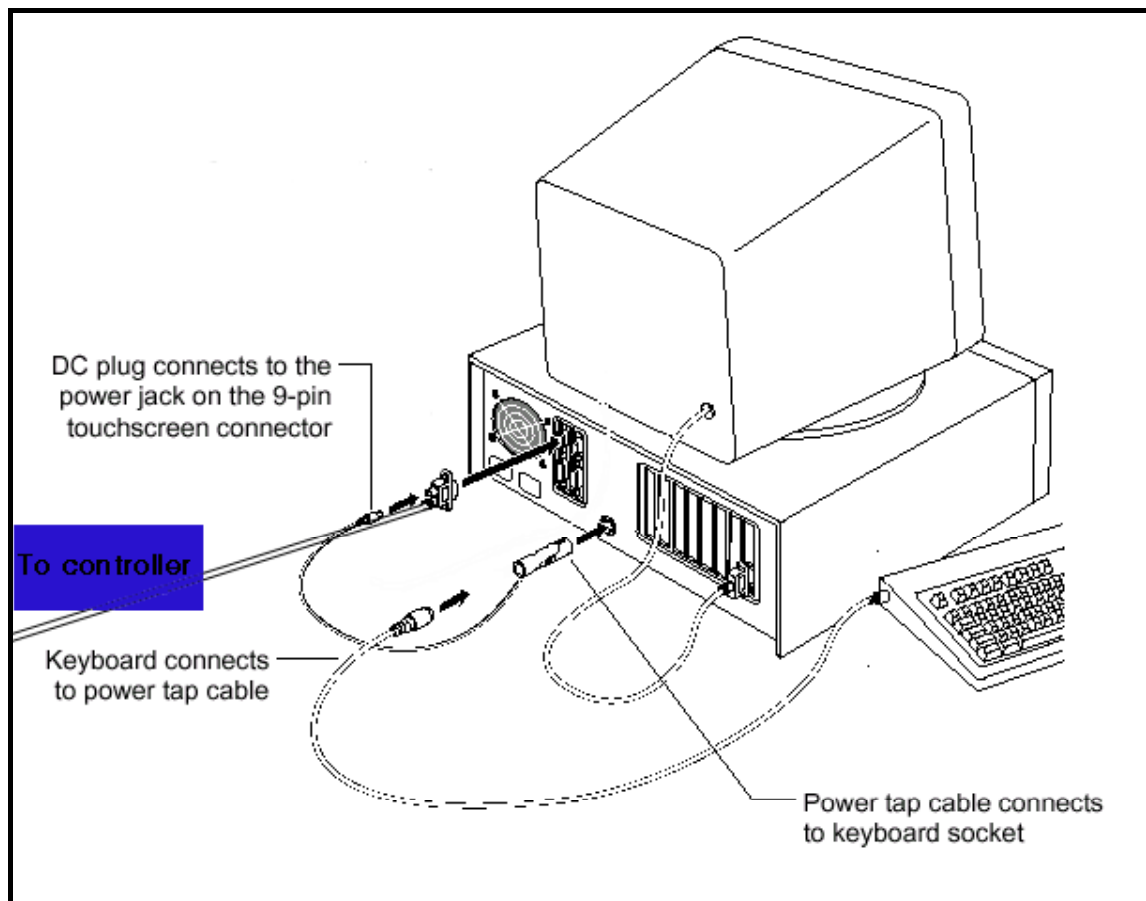
Website : www.digitechsys.co.kr

DTR-01S Touch Screen controller instruction manual

1. Connect controller to touch panel & cable



2. Connect cable to system



TOUCH DRIVER USER'S MANUAL

JUNE. 2002

DigiTech Systems co.,Ltd
www.digitechsys.co.kr
Copyright ©2001

Information in this document is subjects to change without notice and Does not represent a commitment on the part of Digitech Systems co.,Ltd. No reproduction or translation of any part of this guide by any means may be obtained, without prior written permission from Digitech Systems co., Ltd Request for permission and inquiries for further information should be e-mail To mail@digitechsys.co.kr .You are welcome to visit us at the address <http://www.digitechsys.co.kr>

Copyright© 2001 By Digitech Systems co., Ltd.
All Rights Reserved

Contents

INTRODUCTION

Chapter 1: Installing DigiTouch

Chapter 2: How to use DigiTouch

■ Introduction

Touch screen can be the simplest way to apply in entertainment, amusement and gaming and POS, PDA. The interface should be durable, reliable, precise and stable. The users don't have to know a lot about technical knowledge, but know how to point what they want directly.

Digitech Systems Co.,Ltd has been operating as a professional support solutions provider with experienced manpower in fast growing Touch Screen market since establishment in September 6.2000. Digitech Systems is the major touch screen manufacturer in Korea as well as in the world who provides the best input device solution to the end users.

We are young but more than 10 years of experience for developing and manufacturing Touch Screen.

Digitech Systems started the mass production for resistive Touch Screen for various business application market as well as consumer device market such as PDA, HPC, and mobile communicator.

To be the reading supplier of touch screen in Korea as well as world class touch screen in terms of Quality and Quantity.

Digitech Systems Touch Screen Kits Include three items

■ Panel

Panel is consisted of Glass and Film that transparent conducting Film is evaporated . Film and Glass is contacted at position that user selects and position signal get through controller.

■ Controller

Controller is device that make analog signal from panel change to digital signal.

■ Driver

Driver is optimized software to embody for any operating system.

(DOS, Windows 9X/Me/NT/2000/XP and Windows CE)

Chapter 1. Installing Digitouch

Digitouch drivers support DOS, Windows 9X/Me/NT/2000/XP and Windows CE operating systems under PC environment. The update drivers are available in our website, address is <http://www.digitechsys.co.kr> and users could download the new driver from our homepage.

[To install Digitouch]

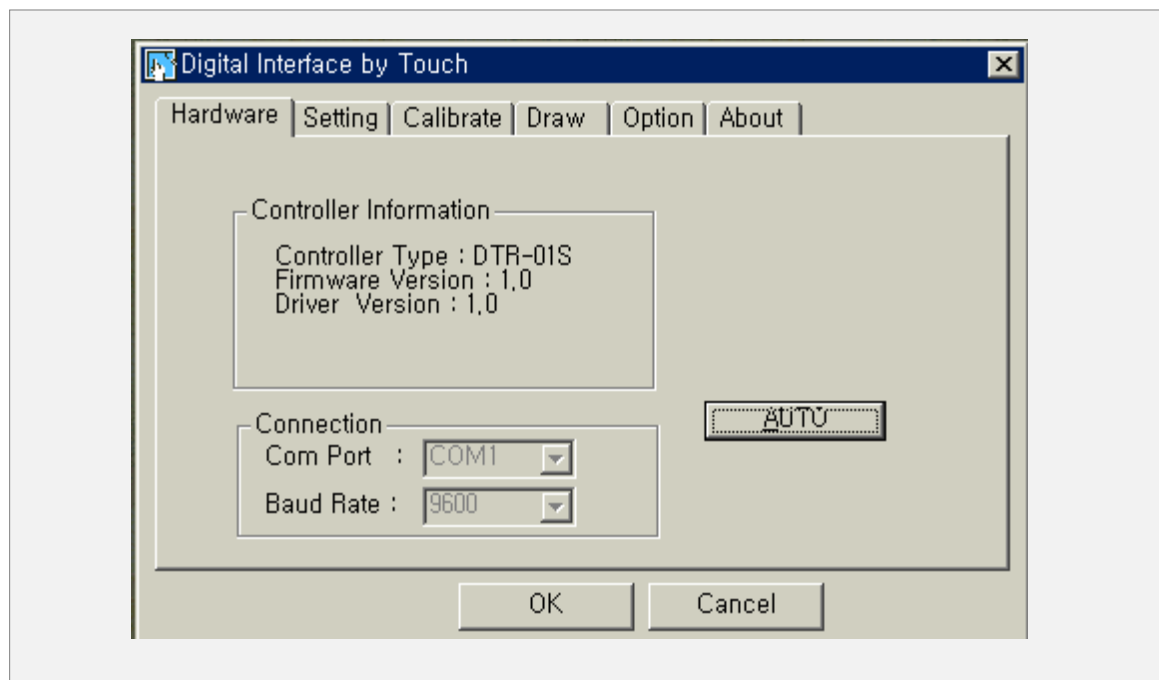
1. Make sure you have completed the appropriate connections
2. Power on your systems Make sure no other applications are open
3. Insert the Digitouch CD
4. Browse to folder and double click the setup.exe file
5. Follow the onscreen instructions to begin the installation
6. Once installation is complete, restart the system and Windows loads driver

[To uninstall Digitouch]

1. Make sure the Digitouch are closed
2. Click on start → Programs → Digitech → Uninstall
3. Follow the onscreen instructions to remove Digitouch

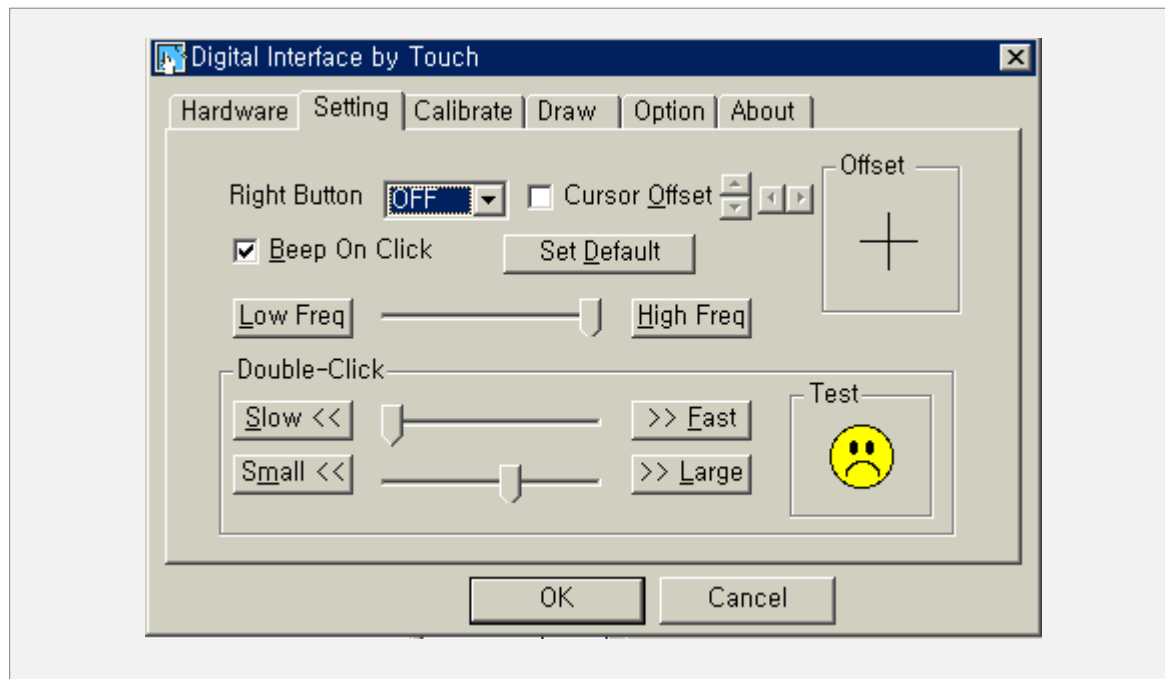
Chapter 2. How to use Digtouch

1. Hardware Tab



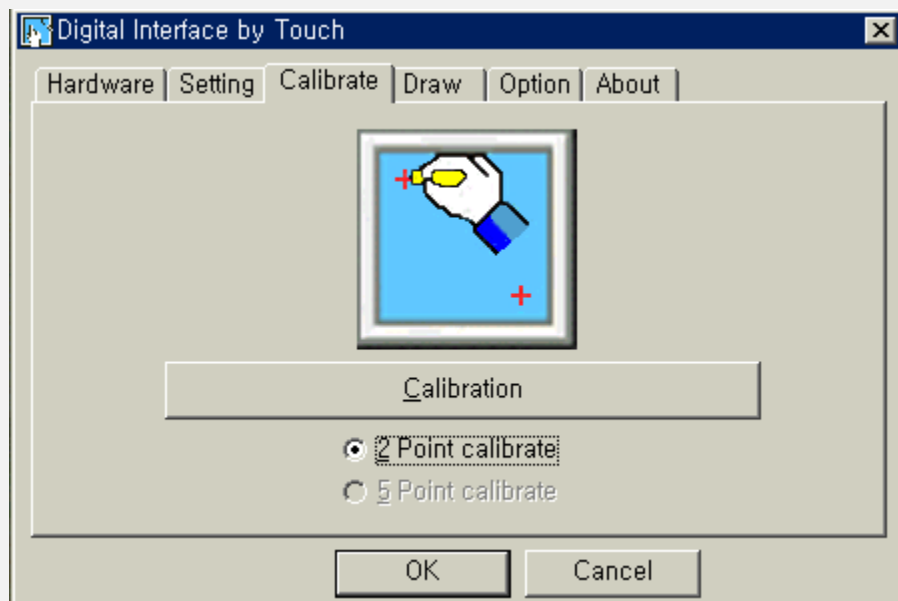
Controller type	It shows the digitech systems controller type. DTR-01S is serial controller.
Firmware version	This digits represents the version number and the revision level of the firmware.
Driver Version	This digits represents the version number and The revision level of the driver.
COM Port	Display the Com Port used the controller connection
Baud Rate	The standard baudrate is 9600 Which is generally acceptable for most applications.
Auto	When you select auto OK Touchscreen found and operational Not found The system could not detect the touchscreen.

2. Setting Tab




Right Button	<p>Right button function has two option.</p> <ol style="list-style-type: none"> 1. icon when select this option, there is a mouse icon shown in the right-lower place of screen. it shows 'left button' being as default for normal use, touch this mouse icon to change the next touch to be 'Right Button' function 2. time when select this option, long touch (about two second) will be the right function.
Cursor Offset	When select this function, mouse cursor will be offset as per setting.
Beep on click	When select this function, On or Off beep sound at touchdown
Double click	This area is for double click adjustment and test area. Move the button of "slow", "fast" and "small", "large" to have good performance of double click.

3. Calibrate Tab



Calibration

Calibration aligns the touchscreen with the underlying video. Once calibrated, the touchscreen is saved by the touchscreen for each video resolution. Therefore, you need to recalibrate the touchscreen the first time you change to a particular video resolution (Example: 800×600 , 1024×768)

1. Select 2-point or 5-point
2. Click the Calibration
3. Calibration targets  appear the screen
4. Touch the targets within 3 seconds.
5. success message appear the screen.

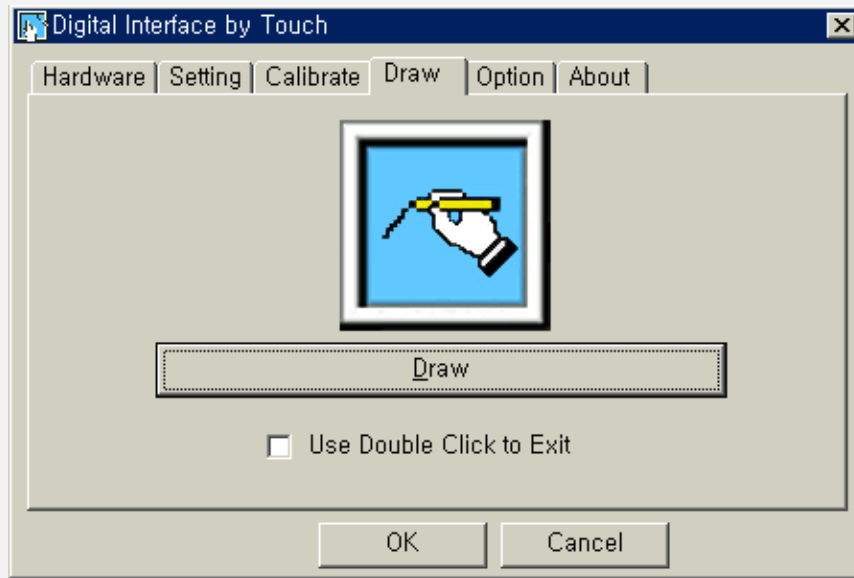
Calibration First Point Success

6. Touch the next targets and success message appear the screen.

Calibration Second Point Success

7. Repeat these instruction the additional calibration targets

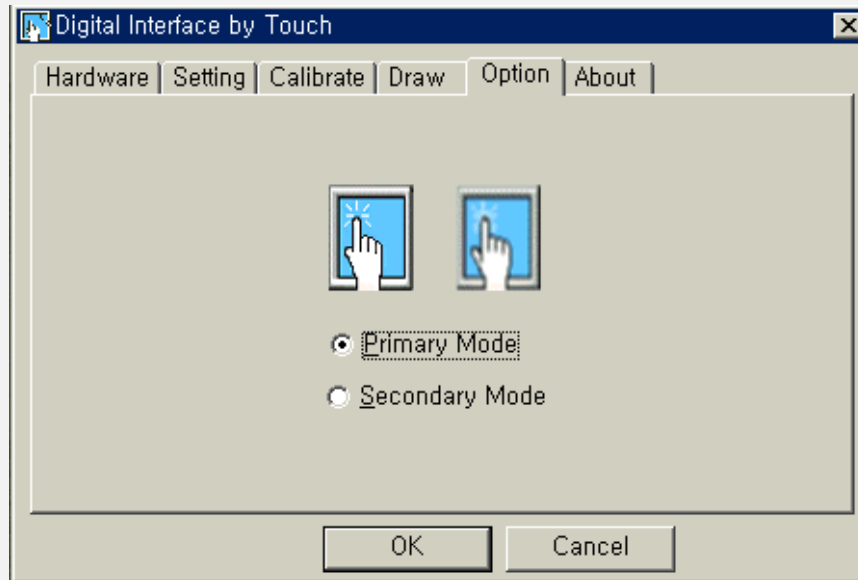
4. Draw Tab



Draw

The Draw program lets you test the operation Touchscreen and pen by checking the accuracy and speed with which the system responds to your touch. this program includes the option (Use double click to exit)

5. Option Tab



Dual screen

This option confines touch to a single screen in two Monitor configuration.

This enables you to use a single touchscreen

With an image split horizontally across two screens you need only

Select which side is the touch screen (Primary or Secondary).