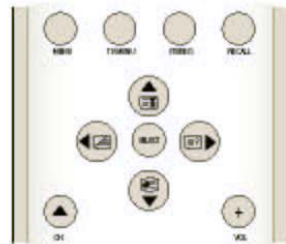


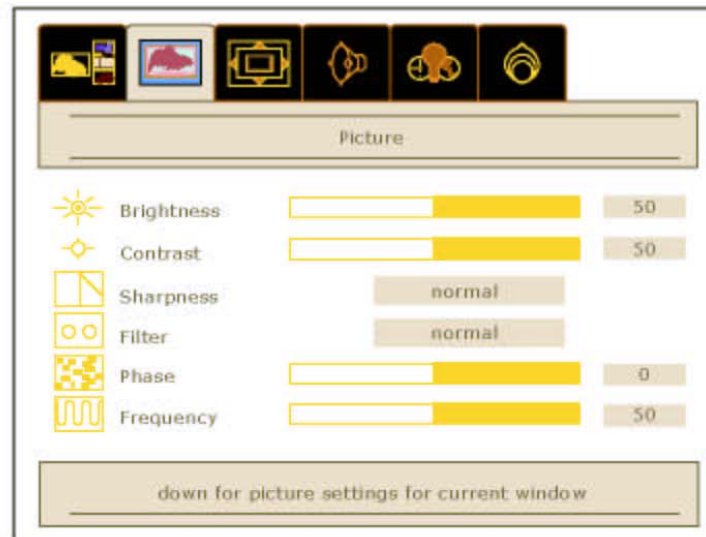
## Picture

### Picture Adjustment Mode

Follow these steps below to set Picture Menu :



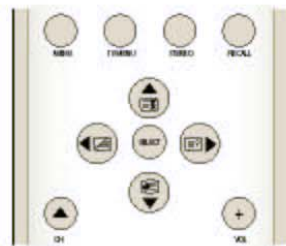
- ① Press the [MENU] button.
- ② Select the desired mode using the [◀▶]/[▲▼] buttons.
- ③ Move to the desired Mode by pressing the [▲▼] button.
- ④ Press the [▲▼] button to select the desired mode.
- ⑤ Press the [◀▶] button to select the desired mode.
- ⑥ Press the [MENU] button to exit the adjustment menu.



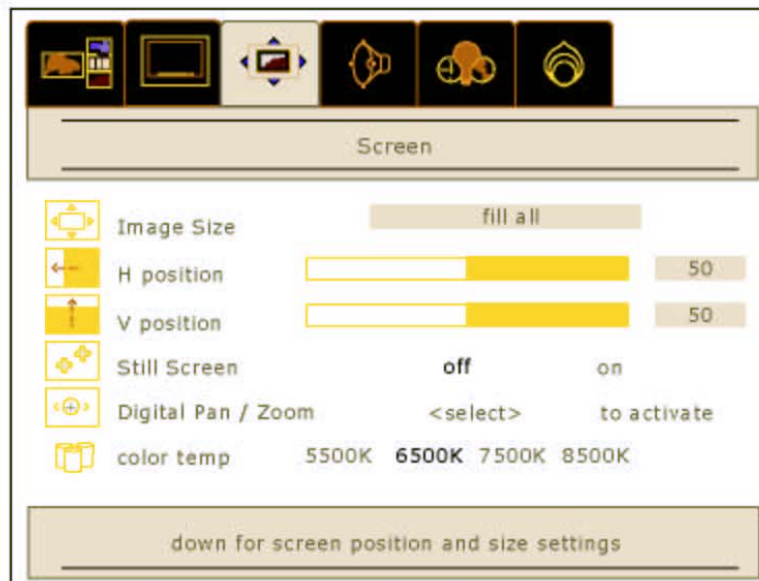
## Screen

### Screen setting

Follow these steps below to set Screen Menu :



- ① Press the [MENU] button.
- ② Select the desired Mode by using the [◀▶]/[▲▼] buttons.
- ③ Press the [▲▼] button to select the desired mode.
- ④ Press the [◀▶] button to select the desired mode.
- ⑤ Press the [MENU] button to exit the adjustment menu.

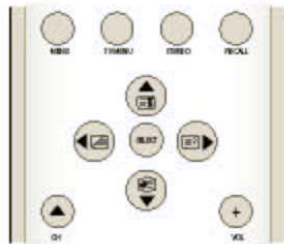


\* Color Temperature : The higher temperature, the cooler image is displayed.  
The lower temperature, the warmer image is displayed.

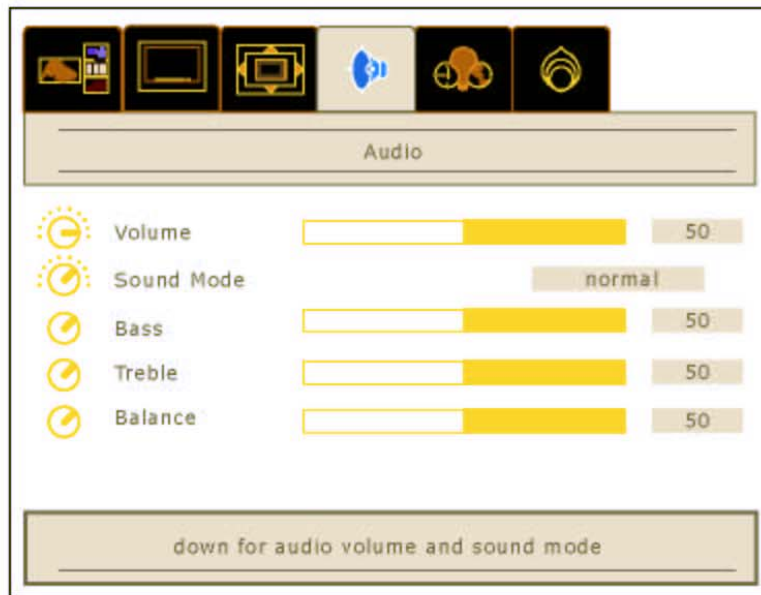
## Audio

### Audio Mode setting

Follow these steps for setting Sound Mode :



- ① Press the [MENU] button.
- ② Select the Audio by using the [◀▶]/[▲▼] buttons.
- ③ Move to the desired Mode by pressing the [▲▼] button.
- ④ Press the [◀▶] button to make the adjustment for Sound.
- ⑤ Press the [MENU] button to exit the adjustment menu.



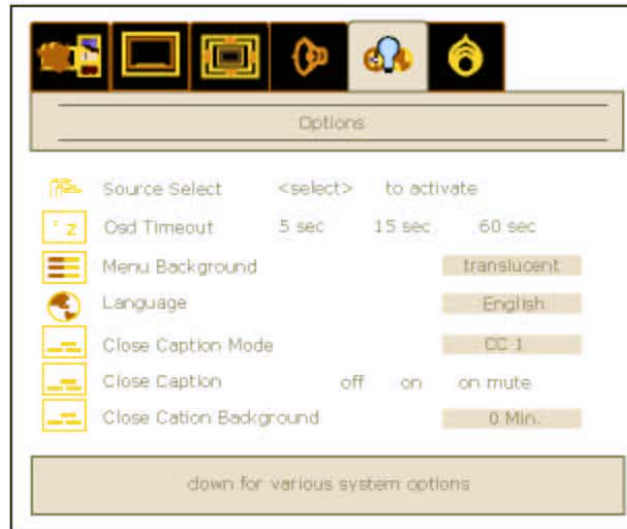
## Options

### Closed Caption Setting(NTSC only)

Follow these steps for setting the Option Menu :



- ① Press the [MENU] button.
- ② Select the Closed Caption by using the [◀▶]/[▲▼] buttons.
- ③ Move to the desired Mode by pressing the [▲▼] button.
- ④ Press the [◀▶] button to select the desired mode.
- ⑤ Press the [MENU] button to exit the adjustment menu.



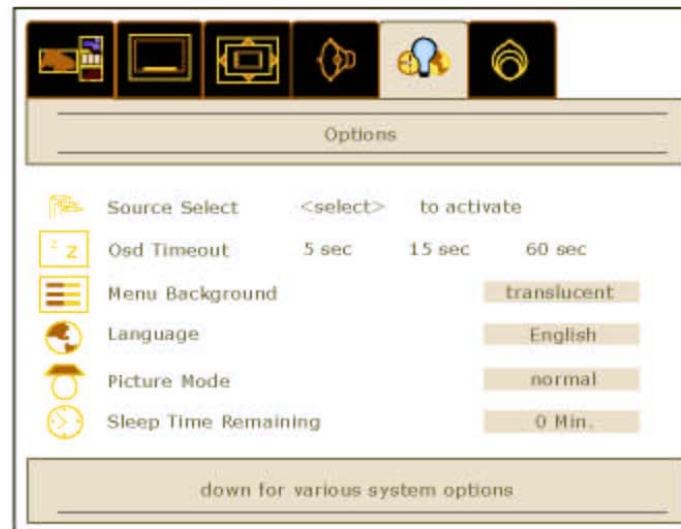
## Options

### Closed Caption Setting(NTSC only)

Follow these steps for setting the closed Caption :



- ① Press the [MENU] button.
- ② Select the Closed Captions Mode by using the [◀▶]/[▲▼] buttons.
- ③ Move to the desired Mode by pressing the [▲▼] button.
- ④ Press the [◀▶] button to select the desired mode.
- ⑤ Press the [MENU] button to exit the adjustment menu.



# Options

## Teletext Setting

Follow these steps for setting the Teletext :



### Switching Teletext On / Off

- ① Press the [MENU] button to enter the Teletext mode.
- ② Press the [MENU] button to return the TV mode.

### Selecting Pages

- ① The Number button 0 ~ 9 are used to enter page number. (The selected Page number appears at the top of the screen and page appears after a short time.)
- ② The [PAGE UP] / [PAGE DOWN] buttons increase or decrease the current page number by 1.

### Index Page

- ① You can switch directly to the programmed preview or the overview page of the station you are currently viewing by pressing the INDEX [INDEX] button.

### Page Hold [HOLD]

- ① Some Teletext pages contain more information than can be displayed simultaneously and are therefore sub-divided into a series of two or more pages.
- ② The first sub-page of a series of four sub-pages will, for example, be indicated by a 1/4 displayed on the top right hand side of the text page.
- ③ These sub-pages are automatically rotated, each page being displayed for a set time before being replaced by the next page. If you need to read a certain page for longer than is allowed, or retain a particular sub-page, then the HOLD button should be pressed. The HOLD symbol will be displayed on the top left hand side instead of the page number and page acquisition will be stopped.
- ④ Normal operation is restored by pressing the HOLD button again or by entering a new page number.

### Subcode [SUBCODE]

- ① For Teletext information that is longer than one page, it may take some time for the automatically changing of sub-pages to reach the sub-page you require. It is possible, however, to enter the sub-page you require and continue watching a normal TV program until the correct sub-page has been reached.
- ② Press SUBCODE button.
- ③ Enter the desired sub-page number.
- ④ When the requested sub-page is reached, the main page number will be superimposed on the normal TV picture.
- ⑤ Press the Teletext button to display the stored sub-page.

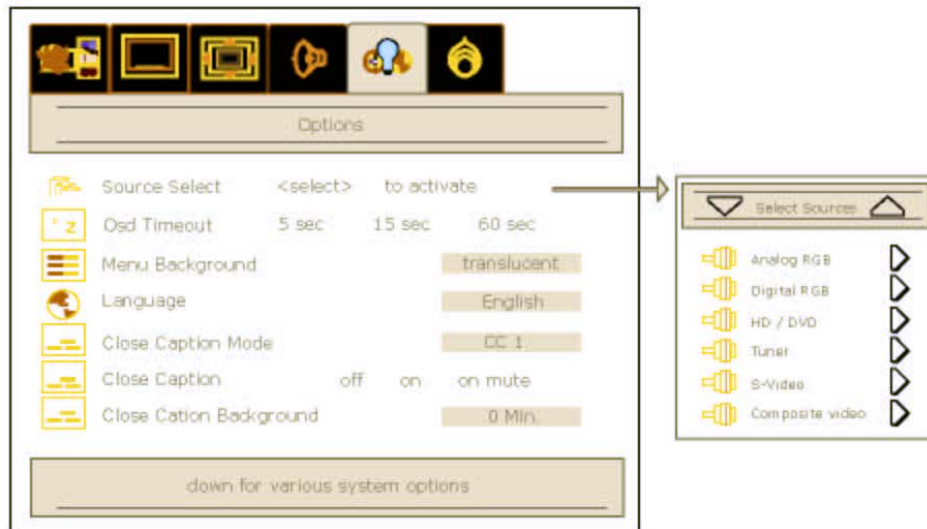
## Options

### Source Select

Follow these steps for setting the Source Select mode :



- ① Press the [MENU] button.
- ② Select the Source Select by using the [SEL] buttons.
- ③ Press the [SEL]/[◀▶] button to Select the desired source.
- ④ Press the [MENU] button to exit the adjustment menu.



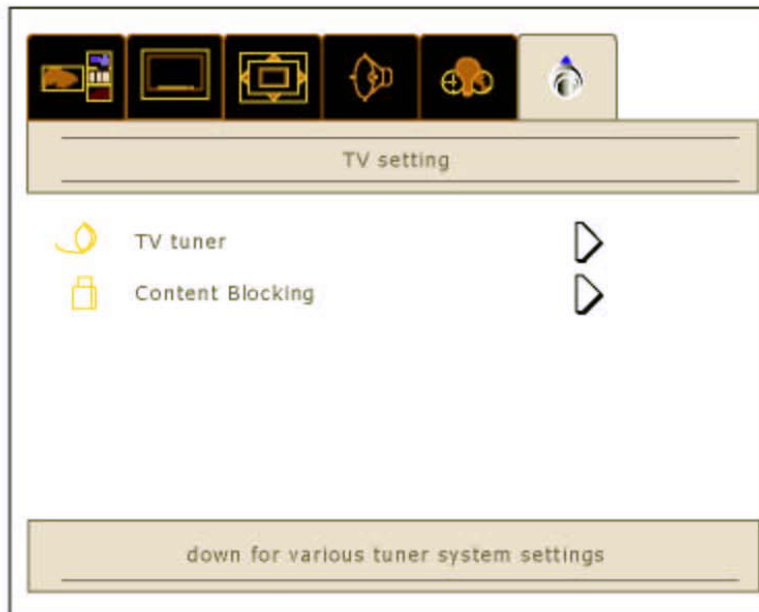
# TV setting

## TV setting

Follow these steps for TV setting :



- ① Press the [MENU] button.
- ② Select the desired Mode by using the [◀▶] button.
- ③ Press the [▲▼] button to Select the desired mode.
- ④ Press the [◀▶] button to Select the desired mode.
- ⑤ Press the [MENU] button to exit the adjustment menu.



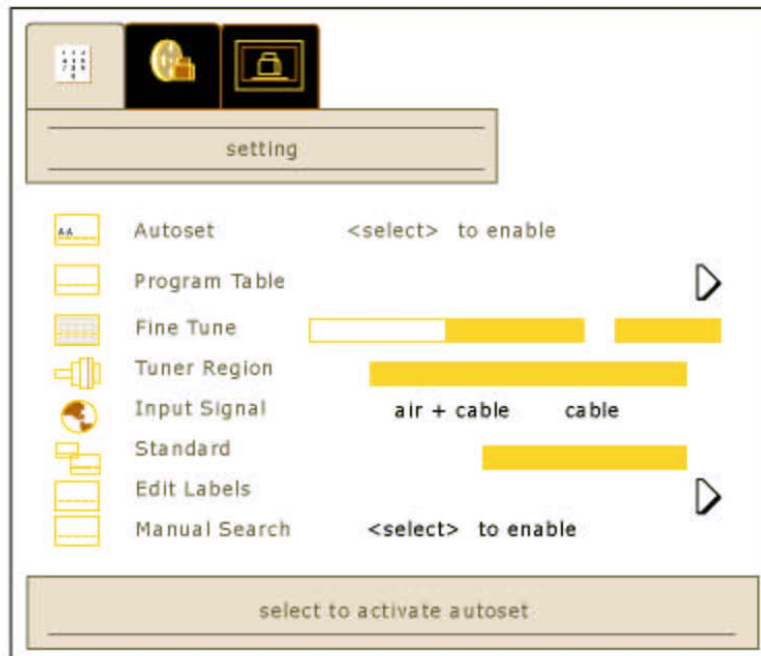


## TV setting

### Settings(PAL only)



- ① Press the [TV MENU] button.
- ② Select the desired mode by using the [◀▶]/[▲▼] button.
- ③ Press the [▲▼] button to Select the desired mode.
- ④ Press the [▶◀] button to Select the desired mode.
- ⑤ Press the [MENU] button to exit the adjustment menu.

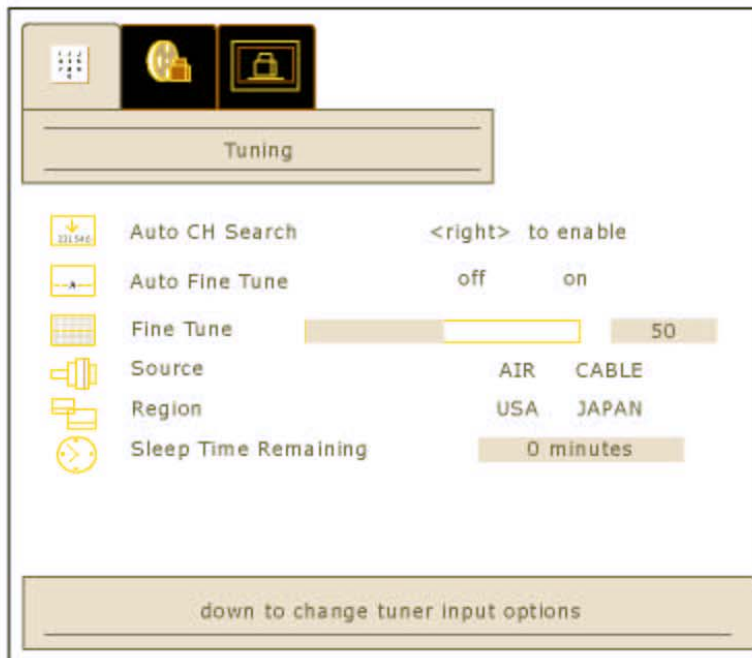


## TV setting

### TV setting (NTSC only)



- ① Press the [TV MENU] button.
- ② Select the desired mode by using the [▲▼]/[◀▶] buttons.
- ③ Press the [▲▼] button to Select the desired mode.
- ④ Press the [◀▶] button to Select the desired mode.
- ⑤ Press the [MENU] button to exit the adjustment menu.



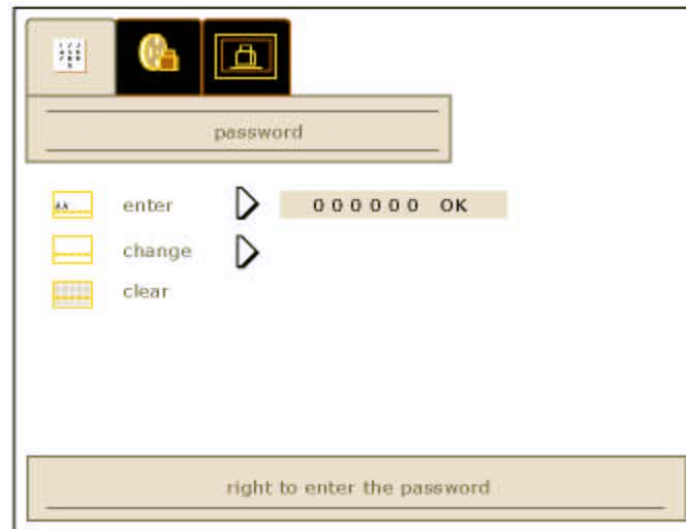
## TV setting

### Content Blocking

Follow these steps for setting the Content Blocking:



- ① Press the [MENU] button.
- ② Select the desired mode by using the [◀▶]/[▲▼] button.
- ③ Press the [▲▼] button to select the desired menu.
- ④ Press the [◀▶] button to select the desired menu.
- ⑤ Press the [MENU] button to exit the adjustment menu.



\* Initial Password Number : 0 0 0 0 0 0 and Press the [SELECT] button at OK.

## Trouble shooting

Symptom	Cause	Possible solution
The power does not turn on.	Power to the TV is not plugged in.	Check source of power to the TV.
The remote control does not work.	Sensor is blocked. Batteries in remote control are weak.	Clear path for sensors. Clean sensor lens. Rplace batteries.
No signal is displayed.	Video source incorrect.	Check video source connection. Make sure TV is set to correct video source.
Picture scrolls or is fuzzy.	Antenna type or location.	Change antenna. Try antenna in different location.
Picture appears but No sound.	Volume set at the minimum. Speakers aren't connected. Audio input set incorrectly.	Increase the volume. Connect the speakers properly. Check audio input connection.
Part of picture is cut off or picture is not centered.	Improper position setting. The signal is unstable.	Adjust the position properly. When RGB, DTV/HD mode, Set to the proper resolution and Adjust the Freq. and phase setting.
Picture is too large or too small.	Improper the screen size setting.	Adjust the screen size setting.
The brightness is reduced gradually.	Fixed patterns are displayed for a long time.	Image sticking minimization mode.

## **FCC Compliance Statements**

Note: This equipment has been tested and found to comply with the limits for a Class B digital device, pursuant to part 15 of the FCC Rules. These limits are designed to provide reasonable protection against harmful interference in a residential installation. This equipment generates, uses and can radiate radio frequency energy and, if not installed and used in accordance with the instructions, may cause harmful interference to radio communications. However, there is no guarantee that interference will not occur in a particular installation. If this equipment does cause harmful interference to radio or television reception, which can be determined by turning the equipment off and on, the user is encouraged to try to correct the interference by one or more of the following measures:

- Reorient or relocate the receiving antenna
- Increase the separation between the equipment and receiver.
- Connect the equipment into an outlet on a circuit different from that to which the receiver is connected.
- Consult the dealer or an experienced radio / TV technician for help.

Warning : You are cautioned that any change or modifications to the equipment not expressly approved by the party responsible for compliance could void your authority to operate such equipment.