

2017.02.02

Manual

DMK940 Series
Professional Wireless
Ultimate Choice Frequency Agile System



www.rsqaudio.com
Made In Korea

d'com®

TABLE OF CONTENTS

1. NOTES FOR SAFETY	3
2. HANDLING AND IMPORTANT CAUTION DURING INSTALLATION	3
3. OVERVIEW OF DEVICE	3
4. BASIC INFORMATION OF DEVICE	3
5. COMPOSITION OF PRODUCTS	4
6. NAME OF EACH PART	5~7
6-1 NAME AND FUNCTION OF TRANSMITTER (DMK940TF)	5
6-2 NAME AND FUNCTION OF CHARGER (DMK940CF)	6
6-3 NAME AND FUNCTION OF RECEIVER (DMK940RF)	7
7. OPERATION	8~12
7-1 CONNECT EXTERNAL DEVICES	8
7-2 SET UP CHANNELS	9~10
7-3 FIXING ON THE WALL	11
7-4 CHANGE UNIT AND BATTERY (DMK940TF)	12
8. CAUTIONS	13
9. TECHNICAL SPECIFICATION	14
9-1 TRANSMITTER (DMK940TF)	14
9-2 RECEIVER (DMK940RF)	14
10. USER INFORMATION / LIMITED WARRANTY STATEMENT	

1. NOTES FOR SAFETY

- For safety, and to prevent any loss of customer's property, please read below this manual and use properly according to it.
- Use designated microphone

2. HANDLING AND IMPORTANT CAUTION DURING INSTALLATION

- Never dismantle and remodel the device. For any services or requests, please contact the sales shop.
- Remove dust with the soft cloth. Do not use benzene, acetone, or lacquer thinner for cleaning

3. OVERVIEW OF DEVICE

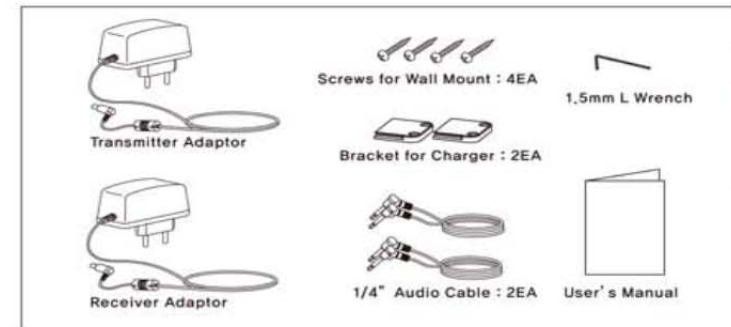
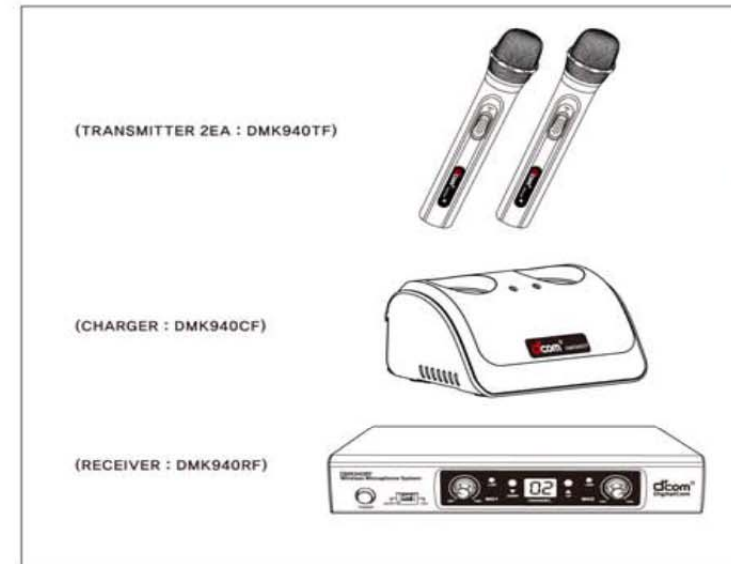
- This device is wireless microphone transmitter which has 900Mhz band. It could be installed with receiver on AUDIO SYSTEM at karaoke.
- It has a high-quality sound.
- It could be applied on various channel condition due to PLL type. Applied multi-tone system on each channel prevents noise and line crossing.

4. BASIC INFORMATION OF DEVICE

- NAME OF DEVICE : Transmission wireless device for voice and sound signal
- MODEL NAME :DMK940 Series
(Transmitter : DMK940TF, Charger : DMK940CF, Receiver : DMK940RF)
- MANUFACTURER : DigitalCom Co.,Ltd.
- MADE IN KOREA

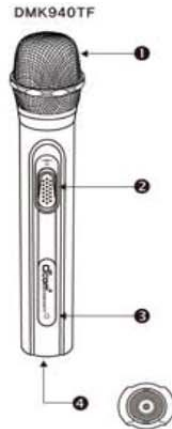
5. COMPOSITION OF PRODUCTS

5. DMK940 Series



6. NAME OF EACH PART

6-1. NAME AND FUNCTION OF TRANSMITTER (DMK940TF)



- ❶ BALL : Guard net to protect unit which is a component to transform voice to electrical digital tone.
- ❷ POWER SWITCH : Power On/Off switch
- ❸ POWER LED : It shows power supply condition. Red is normal state.
If the light keeps blinking, please recharge it before using.
- ❹ CHARGE TERMINAL : Terminal to recharge microphone.

6. NAME OF EACH PART

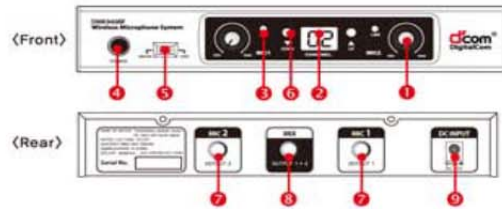
6-2. NAME AND FUNCTION OF CHARGER (DMK940CF)



- ❶ Connection/Recharge : It shows wireless connection of microphone and recharge condition. Green light will appear under normal connection with transmitter/receiver. Lamp will be turned off before recharging microphone. Red light will turn on during recharging. When the recharging is complete, red light will blink.
(It will take around 4hours to complete charging it from complete discharged state)
- ❷ Mode Selection Switch : It should be selected based on purpose by priority – changing channel or charging.
- ❸ Channel Selection Switch : Use to select desired channel of microphone
- ❹ Power Socket : Push supplied adaptor into this socket, (DC12V 1A)
- ❺ Charging Door : Hole to charge microphone.

6. NAME OF EACH PART

6-3. NAME AND FUNCTION OF RECEIVER (DMK940RF)



- 1 Volume Knob (VOL1, VOL2)**
Adjust volume for audio.
- 2 Channel Display**
Display current channel, that is being used.
- 3 Link Display**
Display connecting (working) condition between microphone and receiver.
Shows green light under normal state.
- 4 Power**
Power On/Off switch for receiver.
- 5 Lock Switch**
To change the channel, 'Lock Switch' should be sited on UNLOCK.
To prevent voluntary changing of set up channel, place 'Lock Switch' on LOCK.
- 6 Channel Selection Switch (MIC1, MIC2)**
Select desired channel as adjusting top and bottom of switch while changing the MIC 1 and MIC2 channel.
- 7 Microphone Output Port(Output1, Output2)**
Audio signal output port which is connected by each 1/4 inch audio cable of microphone 1 and 2.
- 8 Microphone Output(Output1+2)**
Audio signal output port which is connected by 1/4 inch audio cable for combined audio signal of each microphone 1 and 2.
- 9 Power Socket**
Power supply socket (DC 12V).

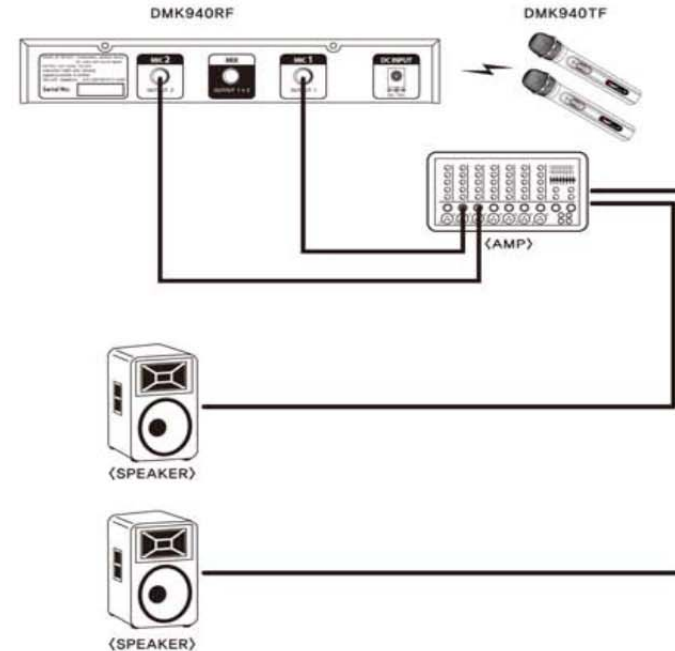
7. OPERATION

7-1. CONNECT EXTERNAL DEVICES

Connect tip of audio cable to 'Microphone Output Port', Then, connect the other tip of audio cable to 'Microphone port' on amplifier.

2 channels can be separately connected with each 'Microphone Output Port' of MIC 1 and MIC 2 or 1 combined port can be connected, MIC1 and MIC2 can be used at the same time.

Please, place receiver far from other devices to prevent mutual interference like noise.



7. OPERATION

7-2. SET UP CHANNELS

- 1) Prepare charger to set up channel.
Place mode switch on UNLOCK

Ex) No. 1
 MODE
 LOCK < > UNLOCK

- 2) Set up channel like channel change list,
MIC 1 and MIC2 will be set up
through one time switch operation
(Set up channel in order based on room number)

Ex) No. 1

 ^ ON < CHANGE CHANNEL >
 v OFF
 1 2 3 4 5

- 3) Place mode switch on UNLOCK at the front of receiver.

Ex) 
 UNLOCK LOCK

- 4) Match channel value with channel
of charger using UP and DOWN button on receiver

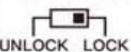
Ex) 
 CHANNEL
 DOWN UP

- 5) When receiver(Microphone) is
inserted into established charger,
red will blink twice on the lamp and receiver
(Microphone) will automatically set up channel
with established channel value.
(2 microphones could be set up at total 21 rooms)

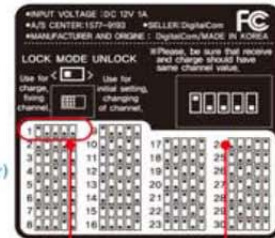
- 6) When you complete setting up channels,
place mode switch on 'LOCK'
at the bottom of charger.

Ex) MODE
 LOCK < > UNLOCK

- 7) Place mode switch on LOCK at the front of receiver

Ex) 
 UNLOCK LOCK

(Bottom of DMK940CF)



Mode switch Channel change switch

CHANNEL CHANGE TABLE	
NO / channel	NO / channel
1	16
2	17
3	18
4	19
5	20
6	21
7	22
8	23
9	24
10	25
11	26
12	27
13	28
14	29
15	30



7. OPERATION

※ If a microphone has broken at any room and replace that microphone with new one.

1. Place mode switch on UNLOCK at the bottom of charger at room
where the failure microphone is located.

MODE
 LOCK < > UNLOCK

2. When new receiver(Microphone) is inserted into charger,
red will blink twice on the lamp and receiver(Microphone) will automatically set up channel
with established channel value.

MODE
 LOCK < > UNLOCK

3. Place mode switch on CHARGE after completing set up channel

CHANNEL NO.	FREQUENCY(MHz)			
	MIC 1		MIC 2	
01	CH1	903,00	CH2	918,60
02	CH3	904,60	CH4	917,40
03	CH5	906,60	CH6	915,40
04	CH7	907,80	CH8	913,80
05	CH9	903,40	CH10	907,00
06	CH11	904,20	CH12	919,00
07	CH13	908,20	CH14	917,80
08	CH15	914,20	CH16	915,00
09	CH17	903,80	CH18	907,40
10	CH19	918,20	CH20	919,80
11	CH21	905,00	CH22	916,20
12	CH23	908,60	CH24	921,00
13	CH25	909,00	CH26	914,60
14	CH27	905,40	CH28	910,20
15	CH29	915,80	CH30	919,40
16	CH31	905,80	CH32	909,40
17	CH33	911,00	CH34	916,60
18	CH35	906,20	CH36	920,20
19	CH37	911,80	CH38	921,80
20	CH39	909,80	CH40	923,40
21	CH41	917,00	CH42	920,60
22	CH43	910,60	CH44	913,00
23	CH45	911,40	CH46	924,20
24	CH47	912,60	CH48	921,40
25	CH49	922,20	CH50	924,60
26	CH51	925,80	CH52	926,60
27	CH53	912,20	CH54	913,40
28	CH55	923,80	CH56	925,00
29	CH57	925,40	CH58	927,40
30	CH59	926,20	CH60	927,00

※ Both MIC 1 and MIC 2 set up channel simultaneously through one operation.

7. OPERATION

7-3. FIXING ON THE WALL

- 1) DMK940CF, charger, can be fixed not only on the wall but also on the floor trough bracket assemble/disassemble. When it fixed on the floor, insert bracket into bracket groove at the bottom of charge and tighten screws at selected are like below picture.

(In case of fixing on the wall)



(In case of fixing on the floor)



Caution : Screws should be tightened completely.
Please, Do not tighten screws by force to prevent screws from spinning with no traction.
Supplied screws can not be used for fixing on the concrete wall.

7. OPERATION

7-4. CHANGE UNIT AND BATTERY (DMK940TF)



- ① Loosen a ball screw with supplied L wrench and turn the ball to disassemble.
- ② Please, pull out cartridge by arrow direction like picture
- ③ Disassemble connected unit wire by hand



- ④ Remove knob like picture
- ⑤ "+" Remove screw with phillips screwdriver and remove guide with same direction of picture
- ⑥ "+" Remove screw with phillips screwdriver and remove cover



- ⑦ When you push bottom part, case and holder will be detached.
- ⑧ Pull out battery connecting wire from detached holder body to detach battery.
(Caution : Changing battery is only allowed with battery pack supplied by RSQ Audio. Imitation or remodeled battery could be caused of device' s damage. In this case, Warranty is not available)
- ⑨ Assemble replaced battery pack in reverse order.
(Caution : Insert battery connecting wire completely)

Contact agency or call to head office (TEL : 032-624-1980) to purchase battery or cartridge

8. MATTERS THAT REQUIRE ATTENTION

- 8-1. Changing battery is only allowed with battery pack supplied by Digitalcom Audio. Open market or remodeled battery could be caused of device's damage. In this case, warranty is not available.
- 8-2. In case of incomplete operation
Check if battery is dead. Life time of supplied chargeable battery is around 6~12 months. If it is ok, please check cartridge (unit).
- 8-3. In case of silent or tuneless
1) If you can't hear sound or face strange sound, please, check battery. If it is ok, please, change cartridge (unit), supplied by Digitalcom Audio. If you meet same issue after cartridge replacement, please, ask for warranty.
2) In case of running out of battery, LED lamp on transmitter will blink. At that time, sound will not be heard. Please, charge it before using.
- 8-4. In case of heavy howling
Location of speaker or other external condition could affect on this. Please, discuss with acoustician. If other microphones have no problem but some microphones have this problem, please, ask for warranty.
- 8-5. In case of noise.
EMI caused by amplifier or some devices could make noises. Please, place receiver far from them, it is not available, lay booklet between devices or wrap up device with foil and place it as far as possible.
- 8-6. In case of heavy noise / tray breaking sound / hear voice from other rooms.
Frequency overlap, frequency influence from external could make this. First, change channel with others'.
Our wireless microphone has 900Mhz band width.
Total 42 channels are available in near distance.
We minimize the distance to prevent line crossing but, sometimes, microphone at neighbor makes interference. If you can't solve this issue, please, ask for warranty.
- 8-7. In case of one side channel not working.
Need to check microphone and receiver. Please, ask for Warranty.
- 8-8. Caution for using charger.
1) Avoiding coating foreign substance at charge terminal on microphone and charge area where the bottom of insert hole on charger

In case of coating foreign substance : Remove it with the soft cloth. Do not use benzene, acetone, or lacquer thinner for cleaning.
2) Avoid humid area to place charger and don't touch it with wet hand,
3) Don't operate channel set up switch except for setting up the microphones' channels.

9. TECHNICAL SPECIFICATION

9-1 TRANSMITTER (DMK940TF)

ITEM	UNIT	SPECIFICATION
Frequency	MHz	902~928
RF Power	dBm	Max,8
NO.of Channel	CH	60
Channel Bandwidth	KHz	400
Channel Spacing	KHz	400
Modulation Method	-	FM
Oscillation Method	-	PLL
Current	mA	Max, 60
Power	-	+3.6V Battery Pack

9-2 RECEIVER (DMK940RF)

ITEM	UNIT	SPECIFICATION
Frequency Range	MHz	902~928
Sensitivity	dBm	-85 Min
T,H,D	%	1% Max
S/N	dB	70 Min
NO.of Channel	ch.	60
Channel Spacing	KHz	400
Band Width	KHz	< 400
Frequency Stability	ppm	±15(-5°C ~ +50°C)
OSC,Method	-	PLL
Current Consumption	mA	400 Max.
Ant	-	λ /4 Helical
Operation Temperature	-	-5°C ~ +50°C

User Information

Operation is subject to the following two conditions.

- (1) This device may not cause harmful interference and
- (2) This device must accept any interference received, including interference that may cause undesired operation.

This device complies Part 15 of the FCC Rules.

NOTE:

This equipment has been tested and found to comply with the limits for a Class B digital device, pursuant to part 15 of the FCC Rules. These limits are designed to provide reasonable protection against harmful interference in a residential installation. This equipment generates, uses and can radiate radio frequency energy and, if not installed and used in accordance with the instructions, may cause harmful interference to radio communications. However, there is no guarantee that interference will not occur in a particular installation. If this equipment does cause harmful interference to radio or television reception, which can be determined by turning the equipment off and on, the user is encouraged to try to correct the interference by one or more of the following measures:

- 1.1 Reorient or relocate the receiving antenna.
- 1.2 Increase the separation between the equipment and receiver.
- 1.3 Connect the equipment into an outlet on a circuit different from that to which the receiver is connected.
- 1.4 Consult the dealer or an experienced radio/TV technician for help.

Warning

Changes or modifications not expressly approved by the party responsible for compliance could void the user's authority to operate the equipment.

CAUTION: Exposure to Radio Frequency Radiation. Antenna shall be mounted in such a manner to minimize the potential for human contact during normal operation. The antenna should not be contacted during operation to avoid the possibility of exceeding the FCC radio frequency exposure limit."

Limited Warranty Statement

LIMITED WARRANTY

DigitalCom Corporation hereafter referred to as DigitalCom, warrants to the original consumer of a d'com product that the product will be free of defects in materials and/or workmanship for the periods indicated. This warranty is applicable to all d'com models and only in the fifty (50) United States.

LABOR : 1 year PARTS : 1 year

LIMITED WARRANTY

If during the first 1 year that immediately follows the purchase date, your new d'com product is covered by this warranty and DigitalCom and/or its authorized service center will repair or replace the defective part without charge for parts or labor.

DigitalCom reserves the right to utilize reconditioned parts in repairing these products and/or to use reconditioned units as warranty replacements.

THIS WARRANTY IS THE ONLY EXPRESS WARRANTY WHICH DIGITALCOM MAKES IN CONNECTION WITH THESE PRODUCTS. ANY IMPLIED WARRANTY APPLICABLE TO THE PRODUCT, INCLUDING THE WARRANTY OF MERCHANTABILITY IS LIMITED TO THE DURATION OF THE EXPRESS WARRANTY. DigitalCom EXCLUDES AND SHALL NOT BE LIABLE IN ANY EVENT FOR INCIDENTAL OR CONSEQUENTIAL DAMAGES.

Some states do not allow limitations that relate to implied warranties and/or the exclusion of incidental or consequential damages. Therefore, these limitations and exclusions may not apply to you. This warranty gives you specific legal rights. You may also have other rights which vary from state to state.

CONSUMER RESPONSIBILITIES

If warranty service should be required, it is necessary that the consumer assume certain responsibilities.

1. You must complete and return warranty registration card to DigitalCom customer service department.
2. Contact DigitalCom Customer Service (82-32-624-1980) for a Return Authorization Number (RA#).
3. Return your product to DigitalCom or an authorized service center with proof of purchase (sales receipt, etc.), RA# and detail description of the problem(s).
4. Shipping and/or insurance costs are the consumer's responsibility. DigitalCom is NOT responsible for shipping costs either from or to the consumer.
5. Units shipped for service should be packed securely. It is recommended to use the original box for the product and double box it to avoid shipping damage. DigitalCom is NOT responsible for any damage during shipping.
6. Your owner's manual contains important safety and operating instructions. It is your responsibility to be aware of the contents of the manual and to follow all safety precautions.

EXCLUSIONS

This limited warranty provided by DigitalCom does not cover:

1. Products which have been subject to abuse, accident, alteration, modification, tampering, negligence, misuse, faulty installation, lack of reasonable care, or if repaired or serviced by anyone other than a service facility authorized by DigitalCom to render such service, or if affixed any attachment not provided with the products, or if the model number or serial number has been altered, tampered with, defaced or removed.
2. Initial installation and removal for repair.
3. Shipping costs to Mediasync or authorized service center for repair service.
4. Shipping costs to return the repaired product to customer.
5. Operational adjustments covered in the Owner's Manual, normal maintenance, video and audio head cleaning.
6. Damage that occurs in shipment, due to act of God, and cosmetic damage.
7. Accessories and batteries

CUSTOMER SERVICE

DigitalCom Corp.
Rm.B01, Bucheon Technopark III 36-1Samjeong-dong, Ojeong-gu, Bucheon-city, Gyeonggi-do, Korea
Tel : 82-32-624-1980(Ext.638) Fax:82-32-624-1986
Homepage: <http://www.digitalcoms.net> / <http://www.mic4u.co.kr>

Keep sales receipt and owner's manual with this document. Do not mail.