

USERS MANUAL

WIRELESS MICROPHONE

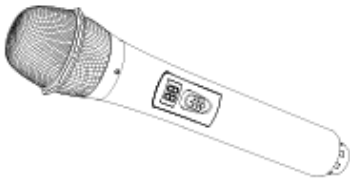
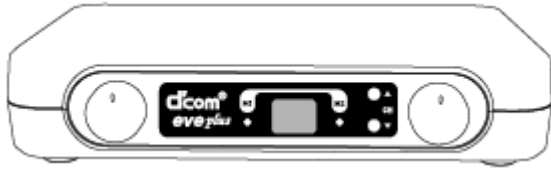
EVE PLUS T

DigitalCom Co., Ltd.

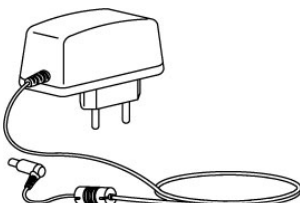
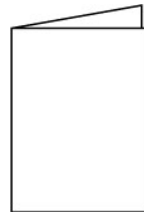
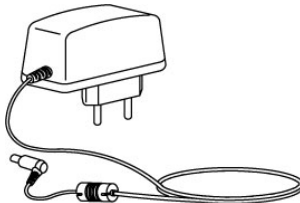
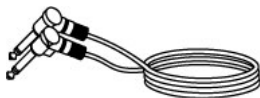
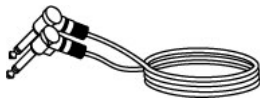
1 Packing List and Optional Accessories

* Check that your package contains all the components listed for your system below. If anything is missing, please contact the shop you purchased.

Systems and Components



Accessories



2 General

Introduction

WIRELESS MICROPHONE Series dual channel microphone set, gives you freedom to perform up to 12 hours once fully charged. It delivers superior durability against abuse use, and gives an extreme convenience to installers because of pre-tuned crystal clear sound quality with minimal and tiny mechanics.

The battery level & channel in use indicating on FND give users a high-level usability, and also the multi-colored LED alerts enable to distinguish low battery & proper channel pairing. It works with the less-crowded UHF frequency band, giving you clearer interference-free sound.

WIRELESS MICROPHONE Series channel allocation makes sure of superior sound quality, operating up to 12 channels simultaneously in case of 12 MHz bandwidth. Both mic channels have their own volume control and you can either output both channels independently or together using the "mixed output". An auto mute circuit eliminates the popping noise when switching the unit on or off.

Our system is designed and manufactured to be dependable, problem free, versatile and easy to use.

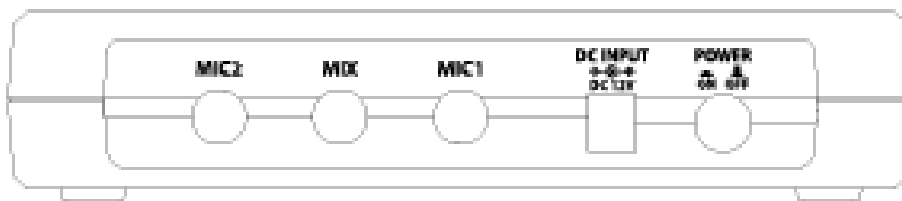
- > Field proven durable design against abuse use
- > CONIC patented multi-tone decoding function for anti-interference
- > CONIC patented pop noise reduction when power on or off
- > Displaying channel in use & battery level
- > Link status indicating
- > Easy to fix out a channel by digital buttons
- > Automatic channel sync between charger and handheld transmitter
- > Semi-automatic frequency lock-out function
- > Easy to install with fixtures

EVE PLUS Dual Channel Receiver with Charger

- Front Panel



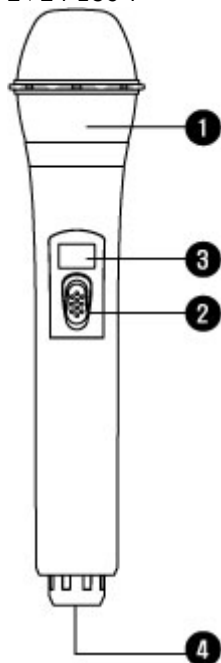
- Rear Panel



- ① Volume Knobs (VOL1, VOL2) - Adjust volume for audio
- ② Channel Display - Display current channel that is being used
- ③ Link Display - Display connecting (working) condition between microphone and receiver (Shows green light under normal state)
- ④ Power - Power On/Off switch for receiver
- ⑤ Lock Switch - To change the channel, 'Lock Switch' should be sited on UNLOCK.
To prevent unwanted channel change, place 'Lock Switch' on LOCK.
- ⑥ Channel UP/DOWN Switch (MIC1, MIC2)
- ⑦ Microphone Output Port (Output1, Output2) - Audio signal output port which is connected by each 1/4 inch audio cable of microphone 1 and 2
- ⑧ Microphone Output(Output1+2) - Audio signal output port which is connected by 1/4 inch audio cable for combined audio signal of each microphone 1 and 2
- ⑨ Power Socket - Power supply socket (DC 12V)
- ⑩ Gain Adjustment
- ⑪ Antenna terminal

Handheld Transmitter

EVE PLUS T



1. Sound Inlet Basket

The guard net to protect unit which is a component to transform voice to electrical digital tone.

2. Power Switch

Power On/Off switch

3. Power LED

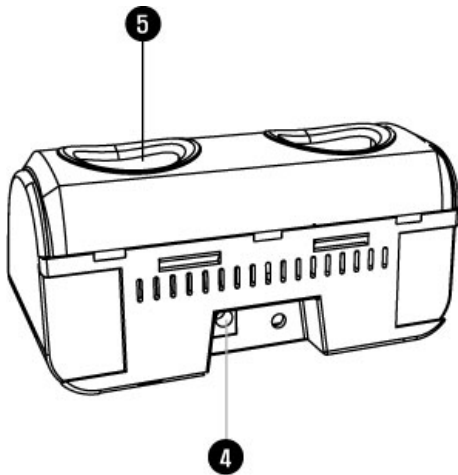
It shows power supply condition. Red is normal state. If the light keeps blinking, please recharge it before using.

4. Charging Terminals

CHARGE TERMINAL : Terminal to recharge microphone.

Charger

EVE PLUS C



4. Adaptor Jack
Push supplied adaptor into this socket. (DC12V 1A)
5. Charging Door
Holes to charge microphone.

3 Setting Up

- Prior to setting up your WIRELESS SYSTEM, check that the transmitter and receiver are tuned to the same frequency, referring to sections 3.8 and 3.9.

Receiver



Single Receiver

1. Unscrew the four rubber feet (1) from the receiver bottom panel.
2. Unscrew the two fixing screws (2) from each side panel.
3. Use the fixing screws (2) to screw the short bracket 3 to one side panel and the long bracket (4) to the other side panel. The brackets are contained in the supplied rack mounting kit.
4. Install the receiver in your rack.

Two Receivers Side by Side

1. Unscrew the four rubber feet (1) from each receiver's bottom panel and remove the screws (5) from the rubber feet (1).
2. Unscrew the two fixing screws (2) from the right-hand side panel of one receiver and from the left-hand side panel of the other receiver.
3. Fix the connecting strips (4) on the first receiver using the screws (5) you removed from the rubber feet.
4. To join the two receivers, slide the connecting strips (4) on the first receiver through the free slots in the side panel of the second receiver. Make sure to align the hole in each connecting strip (4) with the appropriate threaded hole in the bottom panel of the second receiver.
5. Fix the connecting strips (4) on the second receiver using the screws (5) you removed from the rubber feet (1).
6. Screw a short bracket (6) to the outer side panel of each receiver using for each bracket two of the screws (2) you removed from the receiver side panels.
7. Install the receivers in your rack.

Positioning the Receiver

Reflections off metal parts, walls, ceilings, etc. or the shadow effects of musicians and other people may weaken or cancel the direct transmitter signal.

For best results, place the receiver or remote antennas as follows:

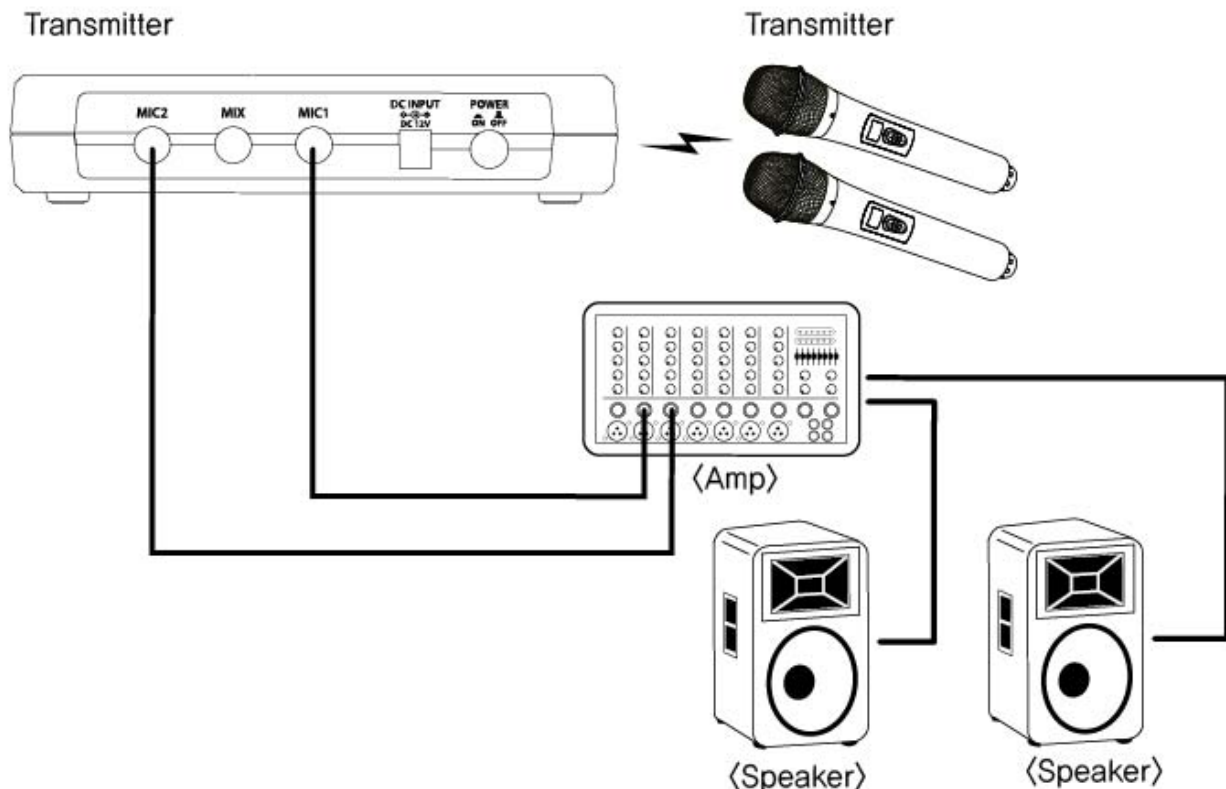
- Place the receiver/antennas near the performance area (stage). Make sure, though, that the transmitter will never get any closer to the receiver than 10 ft (3 m).
- Check that you can see the receiver from where you will be using the transmitter.
- Place the receiver at least 5 ft. (1.5 m) away from any big metal objects, walls, scaffolding, ceilings, etc.
- You can either use the receiver freestanding or mount it in a 19" rack using the supplied Rack Mount Kit.
- If you install one or more receivers into a 19" rack, either mount the supplied antennas on the

receiver front panel(s) or use remote antennas. This is the only way to ensure optimum reception quality.

Connecting the Receiver to a Mixer / Amplifier

You can use both the XLR and 1/4" jack outputs to connect the receiver to your mixer or amp. Use the receiver's AUDIO Menu to adjust the output level as required.

- Connect the audio output to the desired input:
 - XLR output -> XLR Cable -> XLR input
 - 1/4" output -> unbalanced cable -> 1/4" input



Connecting the Receiver to Power

1. CAUTION: Check that the AC mains voltage stated on the included power supply is identical to the AC mains voltage available where you will use your system. Using the power supply with a different AC voltage may cause damage to the unit.
2. Plug the feeder cable (1) on the included power supply into the DC IN socket (2) on the receiver rear panel.
3. Plug the power supply into a convenient power outlet.

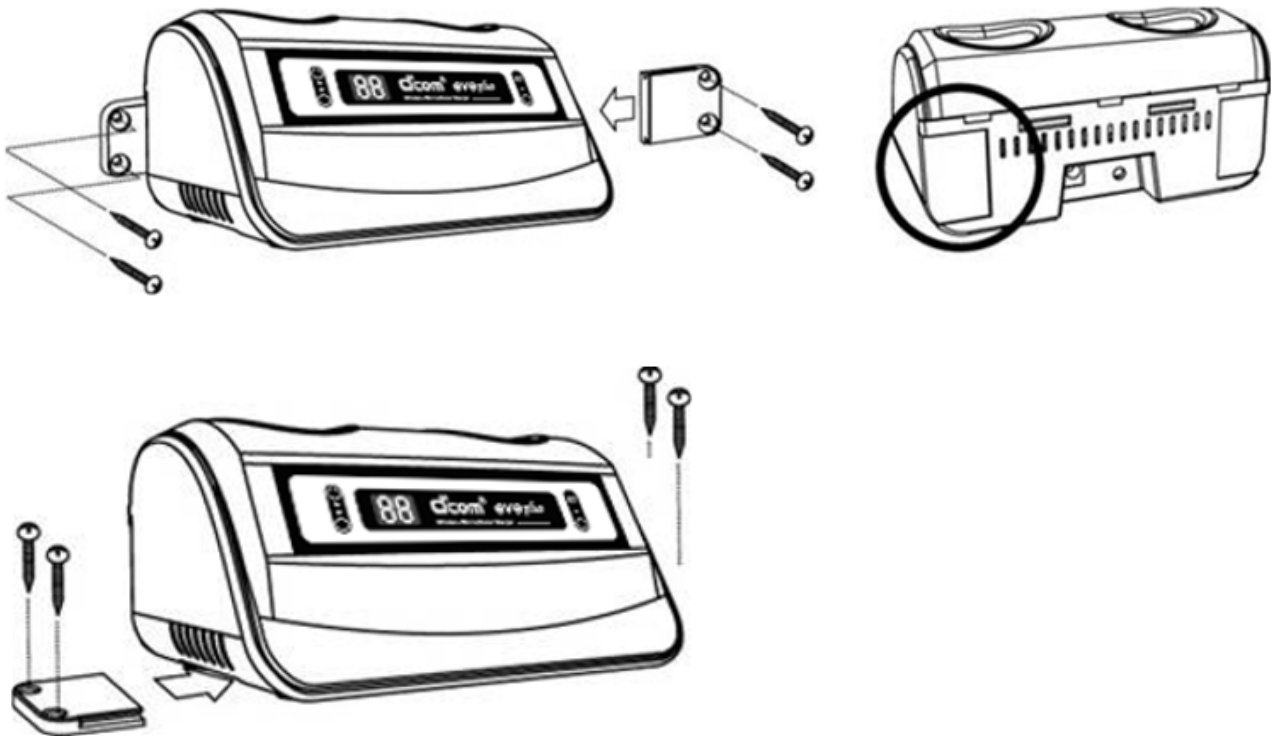
LOCK Mode

The receiver is electronically locked so that you cannot make any unintended adjustments. The "LOCK/UNLOCK" switch is placed on the bottom of the receiver or in the front panel.

- To enter SETUP mode, slide it left or right to "UNLOCK"

Charger

Mounting on/in the wall or shelf.



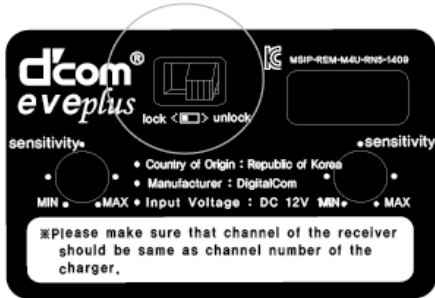
1. Slide the fixtures into the charger to mount on/in a shelf or wall.
2. CAUTION: Check that the AC mains voltage stated on the included power supply is identical to the AC mains voltage available where you will use your system. Using the power supply with a different AC voltage may cause damage to the unit.
3. Plug the feeder cable (1) on the included power supply into the DC IN socket (2) on the charger rear panel.
4. Plug the power supply into a convenient power outlet.

4 Operating Notes


Setting Up a Channel in Use

* Wireless Microphones have an innovative function that is the automatic sync between charger and handheld's.

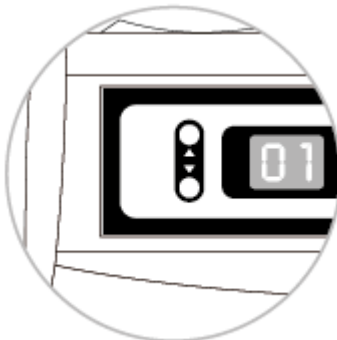
1. Find out the 5-digit piano and the slide switch at the bottom of the charger.




2. Slide right or left to unlock.

EX.) **MODE**
UNLOCK <  > LOCK

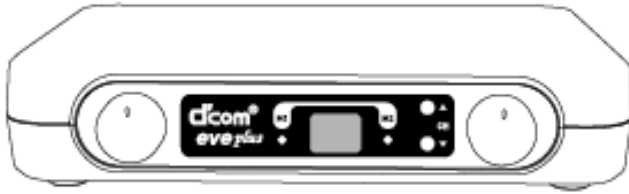
3. Put the 5-digit piano switch properly according to the "CHANNEL ALLOCATION TABLE" label. 30 pair of frequencies will be available by different combination of the 5-digit piano switch. each MIC will be synced up automatically when it is inserted into the charger only when the "LOCK/UNLOCK" switch is positioned to "UNLOCK".



4. Slide right or left to LOCK in the charger once each MIC has been synced up. Otherwise it could make an unwanted interference that two handheld's could have same channel in use.

EX.) **MODE**
UNLOCK <  > LOCK

5. Press the front panel POWER key to switch power to the receiver ON.



6. The display will indicate the currently active channel.

7. Please make sure the receiver is in the LOCK mode. And slide left or right to UNLOCK to change a pair of channels in use.

EX.) **MODE**
UNLOCK < ☐ > LOCK → EX.) **MODE**
UNLOCK < ☒ > LOCK

8. Press the keys, "DOWN" and "UP" to match a pair of channels on the front panel of the receiver.



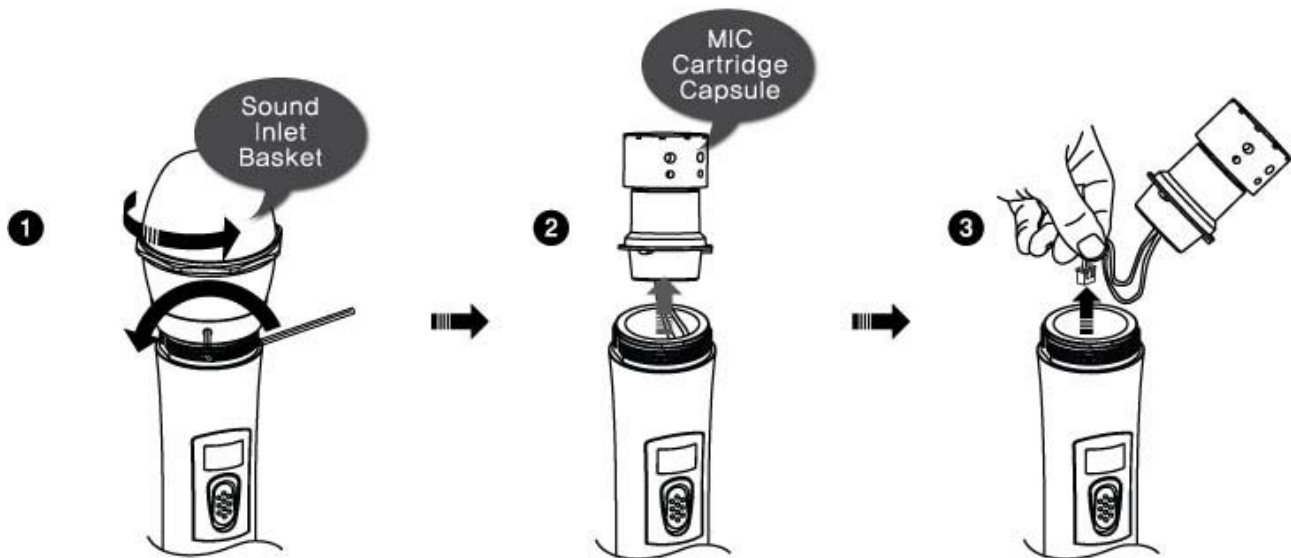
9. Slide right or left to LOCK in the receiver after channel setting-up.

EX.) **MODE**
UNLOCK < ☐ > LOCK

* Please follow up the above procedures even in case a MIC should be replaced to new one or a channel in use must be changed.

Maintenance of MIC Cartridge Capsule and Battery in Handheld

- ① Loosen the hexagon head bolt with using the built-in L wrench in the right below the sound inlet basket and unscrew the sound inlet basket up
- ② Pull up the microphone cartridge smoothly with turning left
- ③ Separate the friction / positive lock from the wire connector



- ④ Screw out the battery compartment bolt and remove the battery compartment
- ⑤ Pull out the battery connector from the internal holder and remove the battery pack
- ⑥ Insert new battery pack and do same job in the reverse sequence.

5 Microphone Technique

Handheld Transmitter A handheld vocal microphone provides many ways of shaping the sound of your voice as it is heard over the sound system. The following sections contain useful hints on how to use your handheld transmitter for best results.

Working Distance and Proximity Effect Basically, your voice will sound the bigger and mellower, the closer you hold the microphone to your lips. Moving away from the microphone will produce a more reverberant, more distant sound, as the microphone will pick more of the room's reverberation. You can use this effect to make your voice sound aggressive, neutral, insinuating, etc. simply by changing your working distance. Proximity effect is a more or less dramatic boost of low frequencies that occurs when you sing into the microphone from less than 2 inches. It gives more "body" to your voice and an intimate, bass-heavy sound.

Angle of Incidence	<p>Sing to one side of the microphone or above and across the microphone's top. This provides a well-balanced, natural sound. If you sing directly into the microphone, it will not only pick up excessive breath noise but also overemphasize "sss", "sh", "tch", "p", and "t" sounds.</p>
Feedback	<p>Feedback is the result of part of the sound projected by a speaker being picked up by a microphone, fed to the amplifier, and projected again by the speaker. Above a specific volume or "system gain" setting called the feedback threshold, the signal starts being regenerated indefinitely, making the sound system howl and the sound engineer desperately dive for the master fader to reduce the volume and stop the howling. To increase usable gain before feedback, place the main ("FOH") speakers in front of the microphones (along the front edge of the stage). If you use monitor speakers, be sure never to point any microphone directly at the monitors.</p> <p>Feedback may also be triggered by resonances depending on the acoustics of the room or hall. With resonances at low frequencies, proximity effect may cause feedback. In this case, it is often enough to move away from the microphone a little to stop the feedback.</p>
Backing Choir	<ol style="list-style-type: none"> 1. Never let more than two persons share a microphone. 2. Ask your backing vocalists never to sing more than 35 degrees off the microphone axis. <p>The microphone is very insensitive to off-axis sounds. If the two vocalists were to sing into the microphone from a wider angle than 35 degrees, you may end up bringing up the fader of the microphone channel far enough to create a feedback problem.</p>

6 Troubleshooting

Problem	Possible Cause	Remedy
No sound.	<ol style="list-style-type: none"> 1. AC adapter is not connected to receiver and/or power outlet. 2. Receiver is OFF. 3. Receiver is not connected to mixer or amplifier. 4. Microphone or instrument is not connected to bodypack transmitter. 5. Transmitter is tuned to different frequency than receiver. 6. Transmitter is "OFF" or transmitter MUTE switch at "MUTE". 7. Transmitter batteries are not inserted properly. 8. Transmitter batteries/battery pack dead. 9. Transmitter is too far away from receiver or squelch threshold setting is too high. 10. Obstructions between transmitter and receiver. 11. Receiver is invisible from transmitter location. 12. Receiver too close to metal objects. 13. Transmitter and receiver Preset versions are not identical. 	<ol style="list-style-type: none"> 1. Connect AC adapter to receiver and/or power outlet. 2. Push POWER switch to switch receiver ON. 3. Connect receiver output to mixer or amplifier input. 4. Connect microphone or instrument to audio input on bodypack. 5. Tune transmitter and receiver to the same frequency. 6. Switch transmitter "ON" or set MUTE switch to "ON" position. 7. Insert batteries conforming to "+" and "-" marks. 8. Replace batteries/charge battery pack. 9. Move closer to receiver or choose lower squelch threshold setting. 10. Remove obstructions. 11. Avoid spots where you cannot see receiver. 12. Remove offending objects or move receiver away. 13. Check Preset versions on transmitter and receiver.
Noise, crackling, unwanted signals.	<ol style="list-style-type: none"> 1. Antenna location. 2. Interference from other wireless systems, TV, radio, CB radios, or defective electrical appliances or installations. 	<ol style="list-style-type: none"> 1. Relocate receiver or antennas. 2. Switch off interference sources or defective appliances or tune transmitter and receiver to a different frequency; have electrical installation checked.
Distortion.	<ol style="list-style-type: none"> 1. GAIN control on transmitter is set too high or too low. 2. Interference from other wireless systems, TV, radio, CB radios, or defective electrical appliances or installations. 	<ol style="list-style-type: none"> 1. Decrease or increase GAIN setting just enough to stop the distortion. 2. Switch off interference sources or defective appliances or tune transmitter and receiver to a different frequency; have electrical installation checked.
Momentary loss of sound ("dropouts") at some points within performance area.	* Antenna location.	* Relocate receiver or antennas. If dead spots persist, mark and avoid them.

7 Specifications

Receiver

Overall Dimensions	40 mm H x 234 mm W x 160 mm D (1.57 x 9.21 x 6.3 i
Net Weight	813 g (28.68 oz)
Audio Output Level	¼ in.: -8 ~ +0 dBu (1 kHz, @+/-50 kHz)
Output Impedance	600 Ω (600 Ω, 6.3 mm / ¼ in. connector)
RF Sensitivity	-88 dBm for 40 dB SINAD
Adjacent Channel Rejection	> 60 dB
Intermodulation	> 70 dB
Image Rejection	110 dB typical
Spurious Rejection	90 dB typical
Antenna	λ/4 Herical
Power Requirements	12 V DC / 1 A [with DC power adapter]
Power Consumption	< 10 W

Transmitter

Gain Adjustment Range	n/a
Deviation	+/- 50 kHz max.
Input Impedance	n/a
Output Impedance	50 Ω
Antenna	Intenna
RF Power Output	10 mW
Connector Types	n/a
Power Requirements	Rechargeable Lithuim Polymer battery, 3.7 V / 850 mA
Battery Life	12 hours typical
Overall Dimensions	246 mm H x 55 mm Upper π x 34 mm Bottom π (9.68 x 2.2 x 1.34 .i)n
Net Weight	Upper π x 34 mm Bottom π (9.68 x 2.2 x 1.34 .i)n 235 g (8.29 oz)

Charger

Power Requirements	5 V DC / 1 A [with DC power adapter]
Current Consumption	< 700 mA
Channel Configuration	Digital buttons 10 mW or 50 mW (region dependent)
Overall Dimensions	75 mm H x 157 mm W x 99 mm D (2.95 x 6.18 x 3.89 in.)
Net Weight	240 g (8.45 oz)

9 Limited Warranty

DigitalCom warrants to the original consumer of Conic products that the product will be free of defects in materials and/or workmanship for the periods indicated. This warranty is applicable to all Conic models and only in the fifty (50) United States;

Warranty : 1 year / Spare parts : 1 year

LIMITED WARRANTY

If during the first 1 year that immediately follows the purchase date, your new Conic products are covered by this warranty and Conic and/or its authorized service center will repair or replace the defective part without charge for parts or labor.

DigitalCom reserves the right to utilize reconditioned parts in repairing these products and/or to use reconditioned units as warranty replacements.

THIS WARRANTY IS THE ONLY EXPRESS WARRANTY WHICH DIGITALCOM MAKES IN CONNECTION WITH THESE PRODUCTS. ANY IMPLIED WARRANTY APPLICABLE TO THE PRODUCT, INCLUDING THE WARRANTY OF MERCHANT ABILITY IS LIMITED TO THE DURATION OF THE EXPRESS WARRANTY. DIGITALCOM EXCLUDES AND SHALL NOT BE LIABLE IN ANY EVENTS FOR INCIDENTAL OR CONSEQUENTIAL DAMAGES.

Some states do not allow limitations that relate to implied warranties and/or the exclusion of incidental or consequential damages. Therefore, these limitations and exclusions may not apply to you. This warranty gives you specific legal rights. You may also have other rights which vary from state to state.

CONSUMER RESPONSIBILITIES

If warranty service should be required, it is necessary that the consumer assume certain responsibilities.

1. You must complete and return warranty registration card to DigitalCom customer service department.
2. Contact DigitalCom Customer Service (82-32-624-1980) for a Return Authorization Number (RA#).
3. Return your product to DigitalCom or an authorized service center with proof of purchase (sales receipt, etc.), RA# and detail description of the problem(s).
4. Shipping and/or insurance costs are the consumer's responsibility. DigitalCom is NOT responsible for shipping costs either from or to the consumer.
5. Units shipped for service should be packed securely. It is recommended to use the original box for the product and double box it to avoid shipping damage. DigitalCom is NOT responsible for any damage during shipping.
6. Your owner's manual contains important safety and operating instructions. It is your responsibility to be aware of the contents of the manual and to follow all safety precautions.

EXCLUSIONS

This limited warranty provided by DigitalCom does not cover;

1. Products which have been subject to abuse, accident, alteration, modification, tampering, negligence, misuse, faulty installation, lack of reasonable care, or if repaired or serviced by anyone other than a service facility authorized by DigitalCom to render such service, or if affixed any attachment not provided with the products, or if the model number or serial number has been altered, tampered with, defaced or removed.
2. Initial installation and removal for repair.
3. Shipping costs to Mediasync or authorized service center for repair service.
4. Shipping costs to return the repaired product to customer.
5. Operational adjustments covered in the Owner's Manual, normal maintenance, video and audio head cleaning.
6. Damage that occurs in shipment, due to act of God, and cosmetic damage.
7. Accessories and batteries

FCC Information to User

This equipment has been tested and found to comply with the limits for a Class B digital device, pursuant to Part 15 of the FCC Rules. These limits are designed to provide reasonable protection against harmful interference in a residential installation. This equipment generates, uses and can radiate radio frequency energy and, if not installed and used in accordance with the instructions, may cause harmful interference to radio communications. However, there is no guarantee that interference will not occur in a particular installation. If this equipment does cause harmful interference to radio or television reception, which can be determined by turning the equipment off and on, the user is encouraged to try to correct the interference by one of the following measures:

- Reorient or relocate the receiving antenna.
- Increase the separation between the equipment and receiver.
- Connect the equipment into an outlet on a circuit different from that to which the receiver is connected.
- Consult the dealer or an experienced radio/TV technician for help.

Caution

Modifications not expressly approved by the party responsible for compliance could void the user's authority to operate the equipment.

FCC Compliance Information : This device complies with Part 15 of the FCC Rules. Operation is subject to the following two conditions: (1) This device may not cause harmful interference, and (2) this device must accept any interference received, including interference that may cause undesired operation

Information to user.

The users manual or instruction manual for an intentional or unintentional radiator shall caution the user that changes or modifications not expressly approved by the party responsible for compliance could void the user's authority to operate the equipment. In cases where the manual is provided only in a form other than paper, such as on a computer disk or over the Internet, the information required by this section may be included in the manual in that alternative form, provided the user can reasonably be expected to have the capability to access information in that form.

IMPORTANT NOTE:

IMPORTANT Safety Instruction:

CAUTION

To reduce the risk of electric shock, do not remove the top cover (or the rear section).
No user serviceable parts inside, refer servicing to qualified personnel.



This symbol, wherever it appears, alerts you to the presence of uninsulated dangerous voltage inside the enclosure-voltage that may be sufficient to constitute a risk of shock.



This symbol, wherever it appears, alerts you to the important operating and maintenance instructions in the accompanying literature. Please read the manual.

- 1) Read these instructions.
- 2) Keep these instructions.
- 3) Heed all warnings.
- 4) Follow all instructions.
- 5) Do not use this equipment near water.
- 6) Do not use near any heat sources such as radiators, heat resistors, stove, or other equipment that produce heat.

CAUTION

**RISK OF EXPLOSION IF BATTERY IS REPLACED
BY AN INCORRECT TYPE.
DISPOSE OF USED BATTERIES ACCORDING
TO THE INSTRUCTIONS**

European CE notice to users and product statements

This product is CE marked according to the provisions of the R&TTE Directive(99/5/EC). Hereby, Digitalcom Co., Ltd. declares that this product is in compliance with the essential requirements and other relevant provisions of Directive 1999/5/EC.

For further information, please contact [http:// www.digitalcoms.net](http://www.digitalcoms.net)

CE1177

Digitalcom Co., Ltd.

303-801 Bucheon Techno Park Ssangyong 3 Cha Apt, 397, Seokcheon-ro,
Ojeong-gu, Bucheon-si 421-742, Korea

Tel: +82-32-624-1980 / Fax: +82-32-624-1985

URL: www.digitalcoms.net

CONTACT INFORMATION

Manufacturer Address : 303-801 Bucheon Techno Park Ssangyong 3 Cha Apt, 397, Seokcheon-ro, Ojeong-gu, Bucheon-si 421-742, Korea

To locate in-country Digitalcom Co., Ltd., distributors of the Wireless Microphone please refer to the Digitalcom Co., Ltd. Website <http://www.digitalcoms.net>

These distributor(s) represent local contacts for this product.

CORPORATE HEADQUARTERS:

Digitalcom Co., Ltd.

303-801 Bucheon Techno Park Ssangyong 3 Cha Apt, 397, Seokcheon-ro, Ojeong-gu,

Bucheon-si 421-742, Korea

Tel: +82-32-624-1980

Fax: +82-32-624-1985

Web: [http:// www.digitalcoms.net](http://www.digitalcoms.net)

This device complies with Industry Canada license-exempt RSS standard(s).

Operation is Subject to the following two condition: (1) this device may not cause interference ,and (2) this device must accept any interference, including interference that may cause undesired operation of the device.

EUROPEAN UNION “DECLARATION OF CONFORMITY”

DECLARATION OF CONFORMITY

Digitalcom Co., Ltd.

303-801 Bucheon Techno Park Ssangyong 3 Cha Apt, 397, Seokcheon-ro, Ojeong-gu,
Bucheon-si 421-742, Korea

declare under our sole responsibility that the product(s)

Wireless Microphone – EVE PLUS T

to which this declaration relate(s) is in conformance with the following standards:

EN 301 489-1 V1.9.2:2011

EN 301 489-3 V1.5.1:2012

EN60950-1:2006+A12:2012

EN 300 220-1 V2.4.11:2012

EN 300 220-2 V2.4.11:2012

following the provisions of the 1999/5/EC Directives.

CUSTOMER SERVICE

DigitalCom

#801, 303-dong, Bucheon Technopark, SSANGYONG III, 36-1, Samjeong-dong, Ojeong-gu, Bucheon-city,
Gyeonggi-do, Korea

Tel : 82-32-624-1980 (Ext.680)

Fax:82-32-624-1986

Email : sales@digitalcoms.net

Homepage: <http://www.conics.co.kr/en.html>

Please keep the sales receipt and owner's manual with this document.