

Appendix 6. User Manual

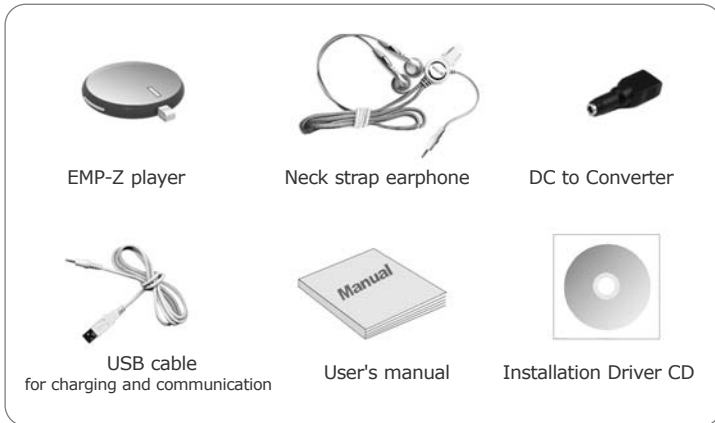
Refer to the following pages

Before operation

» Features

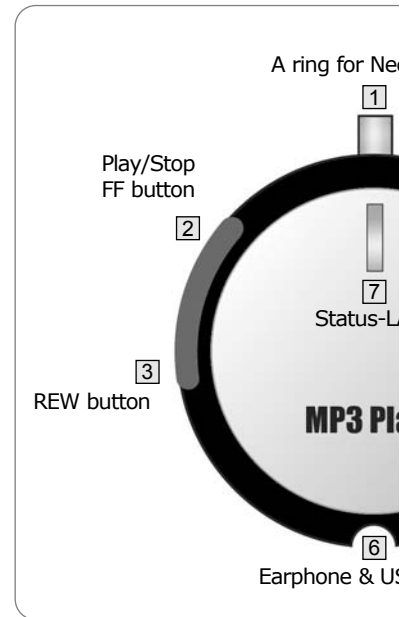
This product playbacks compressed music files such as MP3 files. The player is designed with super-light neck strap style and embedded with battery, which gives you the best ease-of-use and portability.

» Package Contents



** Rechargeable DC adaptor (DC 6v) - optional

» Displays



NOTICES TO USER

This device complies with Part 15 of the FCC Rules. Operation is subject to the following two conditions:

(1) this device may not cause harmful interference, and (2) this device must accept any interference received, including interference that may cause undesired operation.

FCC WARNING

This equipment generates or uses radio frequency energy. Changes or modifications to this equipment may cause harmful interference unless the modifications are expressly approved in the instruction manual. The user could lose the authority to operate this equipment if an unauthorized change or modification is made.

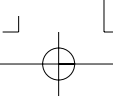
INFORMATION TO THE USER

This equipment has been tested and found to comply with the limits for a Class B digital device, pursuant to Part 15 of the FCC Rules.

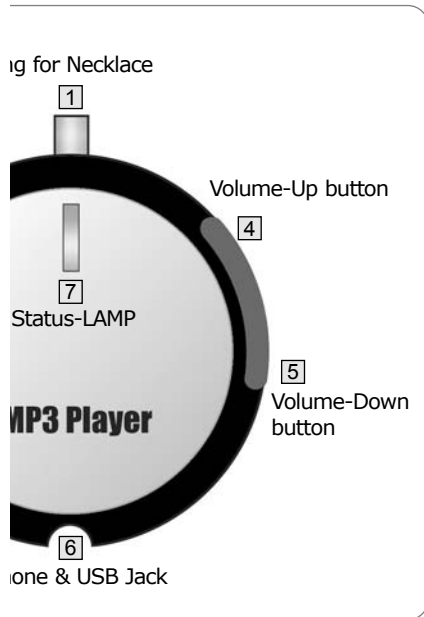
These limits are designed to provide reasonable protection against harmful interference in a residential installation.

This equipment generates, uses and can generate radio frequency energy and, if not installed and used in accordance with the instructions, may cause harmful interference to radio communications. However, there is no guarantee that the interference will not occur in a particular installation. If this equipment does cause harmful interference to radio or television reception, which can be determined by turning the equipment off and on, the user is encouraged to try to correct the interference by one or more of the following measures:

- Reorient or relocate the receiving antenna.*
- Increase the separation between the equipment and receiver.*
- Connect the equipment to an outlet on a circuit different from that to which the receiver is connected.*
- Consult the dealer for technical assistance.*



How to use EMP-Z player



▶▶ Listening to music

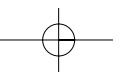
- Power On : Press the [Play] button for one second. Then, the power will be turned on and music will be played back with the beep sound.
- Playback : Press the [Play] button in the stop mode. If the power is off, press the [Play] button for a few seconds. Music will be played back with the beep sound and the status display lamp will flash every one seconds.
- Stop : Press the [Play] or [Stop] button longer than one second during playback. Then, playback will be stopped with the beep sound. Or, if the earphone is taken out, playback will be stopped automatically.

While the music stops, Status Lamps flashes every 1.5 seconds.
At the moment, you can playback from the stopped track if you press Play button.

- Next Track : If you press the [Play] or [Forward] button during playback, next track will be played back from its beginning with the beep sound.
- Previous Track : If you press the [REW] button within two seconds after playback, previous track will be played back from its beginning with the beep sound.
- To the beginning : If you press the [REW] button for two seconds after playback, current track will be played back from its beginning with the beep sound.

▶▶ Adjusting volume

- Up : Press Volume-Up button during playback.
- Down : Press Volume-Down button during playback.



Installing Device D

» Precautions

*** Avoid the unit from the following places/conditions for the good performance.**

- Excessive heat (more than 60 °C)
- Direct sunlight and heating devices
- Humid places such as bathrooms
- Dusty places

*** Be careful about the treatment for the safety of the unit**

- Do not drop or give a shock to the unit.
- Do not break up the unit.
- Do not put pins or something into the unit.
- Do not put it in the mouth.

*** Take care when you use the headphone.**

- Do not make the volume too high because your ears might hurt.
- Do not use the headphone while driving a car or riding a bicycle because you might be involved in an accident.
- Do not use the headphone in dangerous places while walking or jogging.

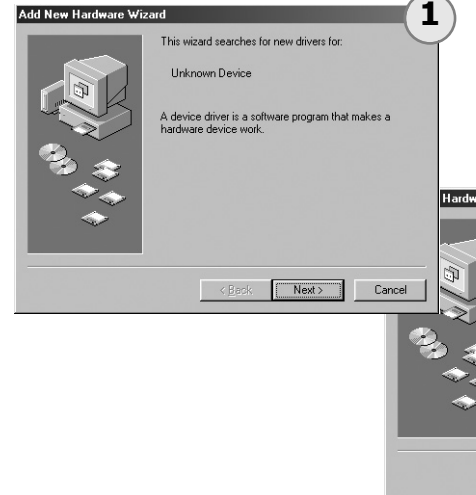
*** MP3 file(s) that is played back once in the unit can't be uploaded to the PC.**

If you run defragment or scan disk process to solve these uploading failures, a disc error can be occurred.

» Installing device driver

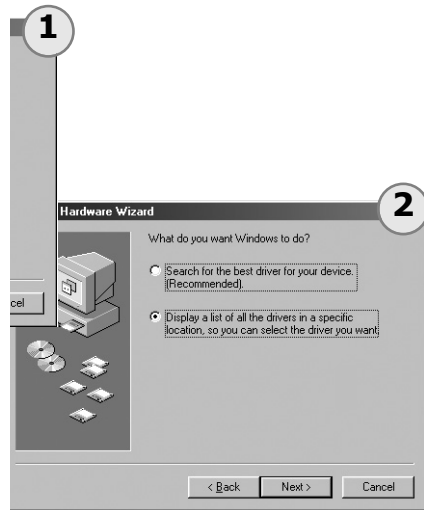
The product doesn't require separate device drivers in Windows ME / Windows 2000 or higher and MAC OS.

*** Installing Windows98 driver**



Driver

the drivers in the computer running on
and MAC OS/9 or higher.



Product Warranty

Portable MP3 Player (EMP-Z)

Assured for one year		Serial NO. :	
Customer	Name :	Sales Agent	Name :
	Phone :		Phone :
	Address :		Address :

This player was manufactured through strict quality control and examination process at home and abroad. If the product is out of order while using it, contact the sales agent you bought it or headquarters or service center. Please don't forget to carry the warranty when you want to repair it.

1. We will provide the repair service during the free warranty period of 1-year if used under the normal condition.
2. But you have to pay actual expense in the following cases even during the warranty period.
 - When you don't carry the warranty or change the reporting items
 - When the product is out of order because of your careless treatment
 - If the malfunction or damage is caused by the natural disaster such as fire, earthquake or flooding, pollution or over-voltage power supply.
 - When you have it repaired at an unauthorized service center, or if you break up or change the product
 - Note that embedded battery and all kinds of accessories are not subject to the warranty.
3. After the warranty period expires, you can receive the chargeable service.
4. Integrity of MP3 and other data files stored in EMP-Z player is not assured. So you keep from storing and moving important data and programs.
5. Unless you filled in the warranty form at the purchase time, you make sure that you carry the warranty and purchase receipt.
6. This warranty is valid only in the Republic of Korea.

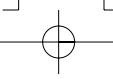
Connecting to PC

▶ Connecting the USB cable to PC

If you connect the USB cable between EMP-Z and other files to EMP-Z or copy those



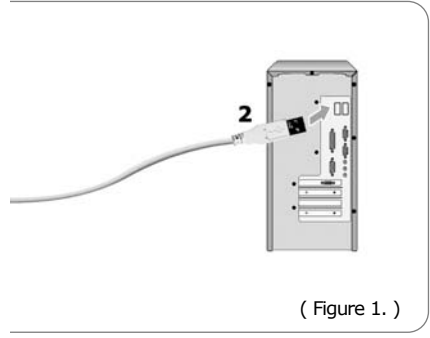
1. Connect the end of USB cable to the earp
2. Connect the other end of USB cable to th



PC

to PC

Between EMP-Z and your PC, you can either copy files from EMP-Z to your PC or copy those files saved in EMP-Z to your PC.



(Figure 1.)

Connect the earphone jack of EMP-Z to the earphone jack of your computer. Connect the USB port of your computer.

▶▶ Copy the music files into EMP-Z

You can conveniently manage the files by classifying the files into the folders by genre or singer.

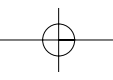
(Note) Only music files having a MPEG 1/2 audio layer 3 format can be played back. (***.mp3)



▶▶ Copying data file to EMP-Z

Copy file(s) other than MP3 file to the EMP-Z in order to use it as a removable disc.

* Music file or text file can be damaged.



Charging EMP-Z

▶▶ Charging EMP-Z with USB

1. Connect the factory-installed USB cable to your computer. (See Figure 1.)
2. Connect the other end of the USB cable to EMP-Z. Then charging will begin with connection to a new disk driver in "My Computer" on PC.

When do I recharge the battery? When the red lamp flashes during playback, it indicates that the battery is flat. So you have to recharge it quickly before using the player.

Status Lamp When you recharge the player, Status Lamp becomes red. When the recharging is finished, the lamp turns green.

Charging disorder When Status Lamp becomes neither red nor green while charging, you have to stop charging immediately and later you try it again. If it continues to happen, you contact the service center.

* **When you first charge the player after it is purchased, you have to charge it until the Status Lamp is green.**

▶▶ Charging EMP-Z with USB



1. Connect the USB cable to the USB jack in the rechargeable conversion jack.
2. Connect the rechargeable DC adaptor (optional) to the DC jack in the rechargeable conversion jack.
3. Connect the power to the rechargeable DC adaptor (optional).

Check Points for Product

When it falls into the water

Stop using immediately ▶ Disconnect the earphone
Face the earphone inlet down and then draw water

When it doesn't playback music

Check the battery status ▶ Check if music files are
Check if the volume is too low

When the charging fails

Check if the unit is connected to the USB port on the

When the lamp becomes neither red nor green

Stop charging the player immediately and later try
If that happens over and over again, you contact the

Specifications

- Output frequency range : 20~20,000Hz	- Output Power
- Maximum output power: 12mW + 12mW (16Ω)	- Voltage : 3.0V
- Weight : 16g	- Supporting file format
- Dimensions: 42(W) X 42(H) X 10(D)	- Continuous