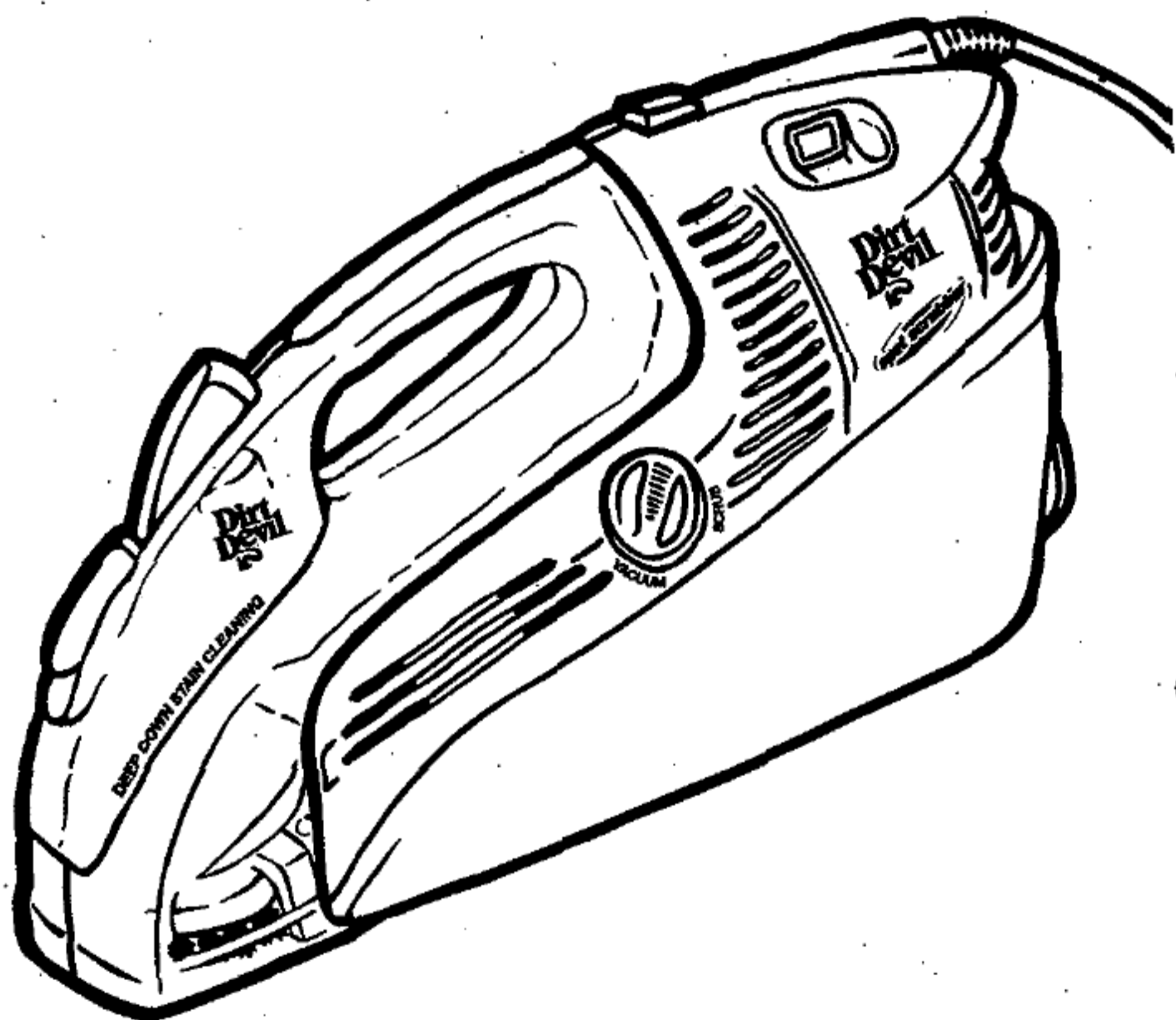


AUG. 30 2001



OWNER'S MANUAL
Operating and Servicing
Instructions



- Please read these instructions carefully before using your Spot Scrubber™.
- Let us help you put your cleaner together or answer any questions, call:

1-800-321-1134 (USA & Canada)
website: www.dirtdevil.com

For quick reference, please record your vacuum information below.

Model #: _____

Mfg. Code: _____

(Mfg. code located on the lower backside of cleaner)

©2000 All rights reserved #1-280922-033

4/01

CONGRATULATIONS

You are now the proud owner of the Dirt Devil® Spot Scrubber™. We trust your new purchase will bring you many years of satisfaction.

Our company designed and developed this product with you in mind. The Dirt Devil® Spot Scrubber™ was designed to quickly and powerfully remove tough spots and stains from carpet and upholstery. The rotating brush agitates and lifts deep down dirt while the powerful vacuum pulls up water and stains.

We are very proud of our products and hope that you are equally satisfied with their quality and performance.

Thank you for your support of Dirt Devil® products.

Visit our website at www.dirtdevil.com

TABLE OF CONTENTS

Safety Instructions	Page 3
Feature Descriptions	Page 4
Preparing Carpet/Upholstery	Page 5
How To Operate	Page 6
Remove and Replace Clean Solution Reservoir	Page 6
Carpet Cleaning	Page 6
Emptying and Cleaning Dirty Water Tank	Page 7
How To Clean Filter	Page 7
How To Store Cleaner	Page 7
Troubleshooting Guide	Page 8

LIMITED WARRANTY

To the consumer, Royal Appliance Mfg. Co. warrants this product to be free of defects in material or workmanship commencing upon the date of the original purchase. Refer to your vacuum cleaner carton for the length of warranty and save your original sales receipt to validate start of warranty period.

If the vacuum cleaner should become defective within the warranty period, we will repair or replace any defective parts free of charge. The complete machine must be delivered prepaid to any ROYAL® Authorized Sales & Warranty Service Station. Please include complete description of the problem, date of purchase, copy of original sales receipt and your name, address and telephone number. If you are not near a Warranty Station, call the factory for assistance in the USA and Canada: 1-800-321-1134. Use only genuine Royal® replacement parts.

The warranty does not include unusual wear, damage resulting from accident or unreasonable use of the vacuum cleaner. This warranty does not cover belts, brushes, bags, bulbs or fan damage. This warranty does not cover unauthorized repairs. This warranty gives you specific legal rights and you may also have other rights. (Other rights may vary from state to state in the USA).

THIS CLEANER IS INTENDED FOR HOUSEHOLD USE ONLY

IMPORTANT SAFETY INSTRUCTIONS

When you use an appliance, basic precautions should be followed, including the following:

- **READ ALL INSTRUCTIONS BEFORE USING THE APPLIANCE.**
- **ALWAYS FOLLOW THESE SAFETY INSTRUCTIONS.**
- **DO NOT LEAVE CLEANER UNATTENDED WHEN PLUGGED IN.**
- **WARNING: DO NOT USE SHARP OBJECTS TO CLEAN OUT THE UNIT SINCE THEY COULD CAUSE DAMAGE.**

READ ALL INSTRUCTIONS BEFORE USING THE APPLIANCE.

WARNING: TO REDUCE THE RISK OF FIRE, ELECTRIC SHOCK OR INJURY:

- Do not leave appliance when plugged in. Unplug from outlet when not in use and before servicing.
- Do not use outdoors. Electrical shock could occur.
- Do not immerse. To reduce the risk of electric shock - use indoors only, and use only on surface moistened by cleaning process.
- Do not allow to be used as a toy. Close attention is necessary when used by or near children.
- Use only as described in this manual.
- Do not use with damaged cord or plug. If appliance is not working as it should, has been dropped, damaged, left outdoors, or dropped into water, return it to a service center for inspection. Call 1-800-321-1134 for the nearest service center.
- Do not pull or carry by cord, use cord as handle, close a door on cord, or pull cord around sharp edges or corners. Do not run appliance over cord. Keep cord away from heated surfaces.
- Do not unplug by pulling on cord. To unplug, grasp the plug, not the cord.
- Do not handle plug or appliance with wet hands.
- Do not put any objects into openings. Do not use with any opening blocked; keep free of dust, lint, hair, and anything that may reduce air flow.
- Keep hair, loose clothing, fingers, and all parts of body away from openings and moving parts.
- Do not pick up anything that is burning or smoking, such as cigarettes, matches, or hot ashes.
- Use the Spot Scrubber™ only to clean floors and upholstery. Do not use to clean ceilings, walls, or other vertical surfaces.
- Do not use without dirty water reservoir in place.
- To prevent dirty water from running into motor, do not hold the Spot Scrubber™ upside-down or lay on its side. Use Spot Scrubber™ in a normal vacuuming position.
- Turn off all controls before unplugging.
- Use extra care when cleaning on stairs.
- Do not use to pick up flammable or combustible liquids, such as gasoline, or use in areas where they may be present.
- Do not use an extension cord with this Spot Scrubber™.
- Store the Spot Scrubber™ indoors. Put the Spot Scrubber™ away after use to prevent tripping accidents.
- Using improper voltage may result in damage to the motor and possible injury to the user. Proper voltage is listed on the cleaner plate.
- Connect to a properly grounded outlet only. See Grounding Instructions.
- Use only Dirt Devil® Carpet Shampoo.

SAVE THESE INSTRUCTIONS

GROUNDING INSTRUCTIONS

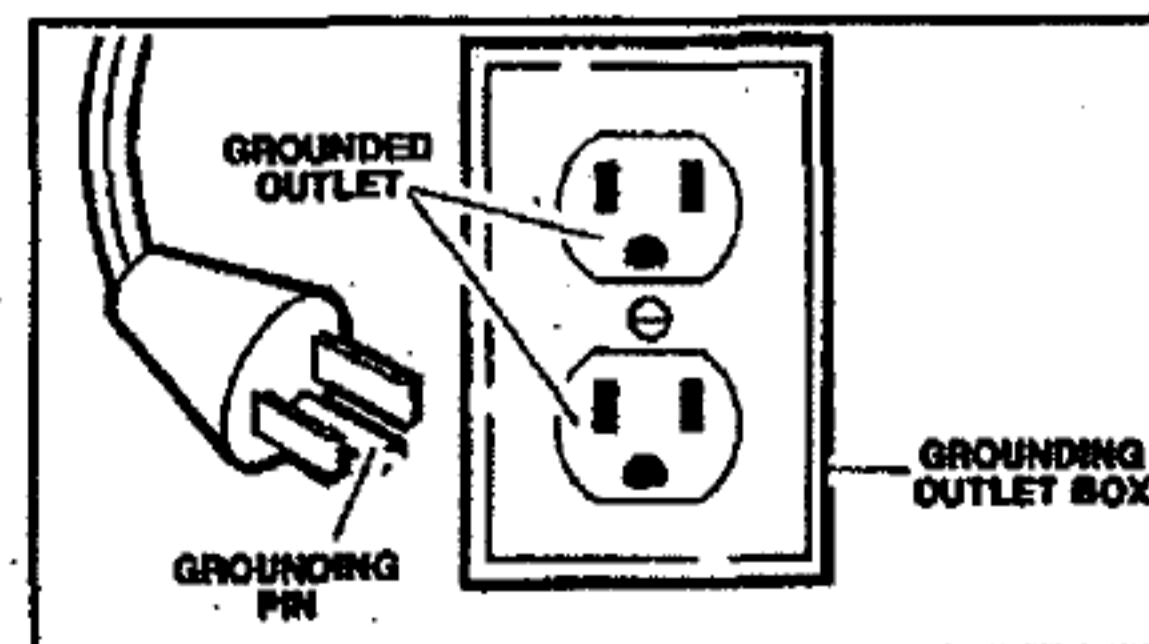
This appliance must be grounded. If it should malfunction or breakdown, grounding provides a path of least resistance for electric current to reduce the risk of electric shock. This appliance is equipped with a cord having an equipment-grounding conductor and grounding plug. The plug must be inserted into an appropriate outlet that is properly installed and grounded in accordance with all local codes and ordinances.

WARNING

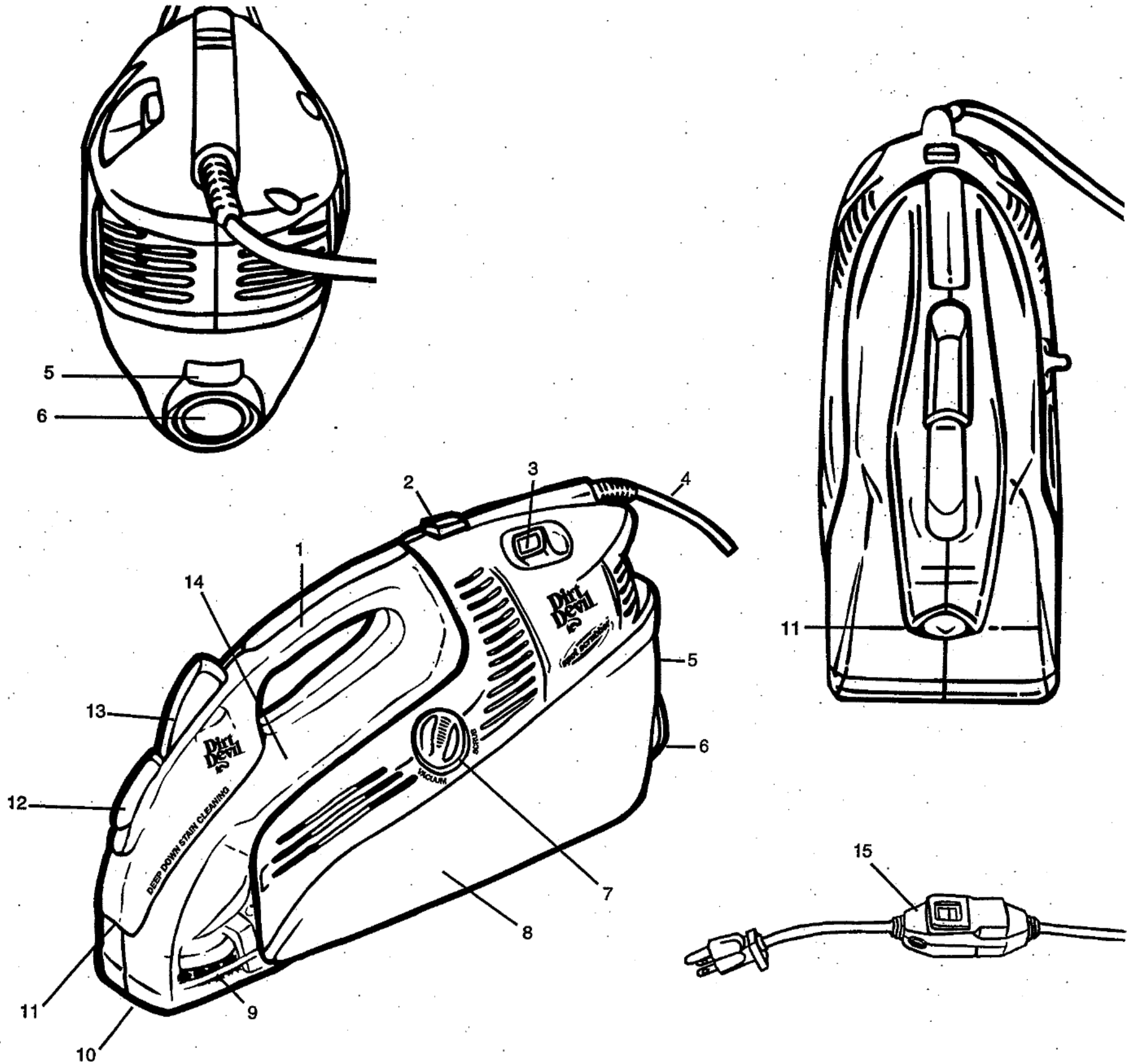
Improper connection of the equipment-grounding conductor can result in a risk of electric shock. Check with a qualified electrician or service person if you are in doubt as to whether the outlet is properly grounded. Do not modify the plug provided with the appliance - if it will not fit the outlet, have a proper outlet installed by a qualified electrician.

This appliance is for use on a nominal 120-volt circuit and has a grounding attachment plug that looks like the plug illustrated in the sketch.

Make sure that the appliance is connected to an outlet having the same configuration as the plug. No adapter should be used with this appliance.



FEATURE DESCRIPTIONS



FEATURES

- | | |
|-----------------------------------|------------------------------|
| 1. Handle | 9. Rotating Brush |
| 2. Clean Solution Reservoir Latch | 10. Vacuum Nozzle |
| 3. On/Off Switch | 11. Spray Nozzle |
| 4. Power Cord | 12. Cord Wrap |
| 5. Dirty Water Tank Latch | 13. Solution Spray Pump |
| 6. Drain Cap | 14. Clean Solution Reservoir |
| 7. Cleaning Mode Selector | 15. ALCI |
| 8. Dirty Water Tank | |

PREPARING THE CARPET/UPHOLSTERY

PREPARING THE CARPET/UPHOLSTERY:

IMPORTANT: Do not use the Spot Scrubber™ as a dry vacuum.

For existing stains or spots:

1. Vacuum carpet/upholstery thoroughly. Use a Dirt Devil® vacuum cleaner with a revolving brushroll for best results.

CHECK FOR COLOR FASTNESS:

Before cleaning carpet/upholstery, test for color fastness. Dampen a white cloth with dirt devil cleaning solution. Test a small area in a closet or under a cushion. Gently rub the cloth over the area. Check each color for color bleeding. If the cloth remains clean, it should be safe to clean the carpet/upholstery.

CHECK CLEANING CODE ON UPHOLSTERY:

NOTE: *If upholstery is not marked, seek professional assistance.*

- Use only on upholstery/fabric marked:
 - W (wet clean)
 - S/W (solvent/dry or wet clean)
- Do NOT clean upholstery/fabric marked
 - S (solvent/dry clean only).
- Check the cushion foam color. If the foam is a dark color, it may bleed through and discolor the fabric.

FOR QUICK SPILLS:

1. Make sure cleaning mode selector knob is set to "vacuum".
2. Vacuum up as much of the spill as possible.
3. Spray cleaning solution on the spot using spray pump. Allow cleaning solution to penetrate stain for approximately 2 minutes.
4. Switch cleaning mode selector to "scrub" (see pg. 6 for location and operation of the cleaning mode selector).
5. Scrub with rotating brush.
6. Return cleaning mode selector to "vacuum" to vacuum up remaining moisture.

HELPFUL HINTS FOR CLEANING CARPET/UPHOLSTERY:

1. Do not oversaturate carpet/upholstery with cleaning solution while using the Spot Scrubber™.
2. Allow cleaning solution to penetrate stain for approximately 2 minutes.
3. For heavily soiled areas, additional applications may be necessary.
4. Allow plenty of time to dry carpet/upholstery thoroughly.
5. Wipe cleaning solution from woodwork and wood to prevent any damage.
6. Try not to walk on carpet until it is completely dry.
7. After carpet is thoroughly dry, vacuum the carpet using a cleaner with a revolving brushroll.

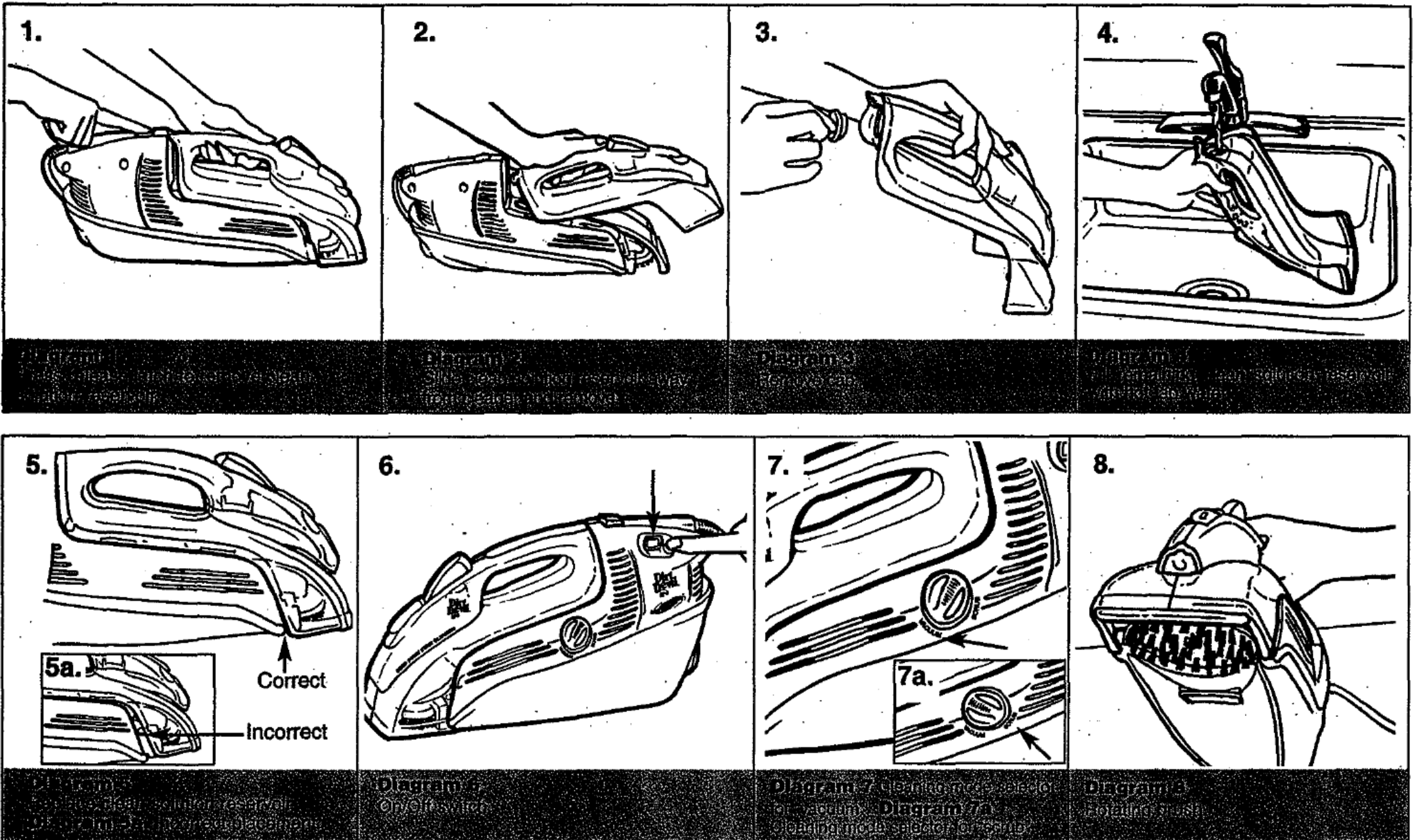
AFTER CLEANING:

- Allow carpet to dry completely. Try not to walk on the carpet until it is dry.
- If you need to walk on the carpet, place white towels on the areas you want to walk.
- If the carpet is not dry and the furniture must be placed back in the room, use plastic or foil under the furniture to prevent staining the carpet.
- Thoroughly clean the dirty water tank with hot tap water. See page 7.

WARNING:

DO NOT STORE SPOT SCRUBBER™ IN GARAGE OR AREA WHERE UNIT COULD FREEZE.

HOW TO OPERATE



HOW TO OPERATE

REMOVE AND REPLACE CLEAN SOLUTION RESERVOIR:

1. Grasp clean solution reservoir under handle and press handle release latch down (Diagram 1).
2. Slide clean solution reservoir away from cleaner and remove (Diagram 2).
3. Unscrew cap from back of clean solution reservoir (Diagram 3). Fill reservoir with approximately 1/2 oz. of solution. Fill remaining clean solution reservoir with hot tap water (Diagram 4). Replace cap.

NOTE: Use only *Dirt Devil® Carpet & Rug Shampoo*. Using other cleaning solutions may cause excessive foaming. Excessive foam will cause the float to shut off the vacuum prematurely. Using other cleaners will void your warranty.

4. Line up tabs on clean solution reservoir with slots on cleaner and slide reservoir toward cleaner (Diagram 5). Make sure the clean solution reservoir is not misaligned (Diagram 5a).

NOTE: Failure to install the clean solution reservoir correctly will result in poor dirty water pickup.

CARPET/UPHOLSTERY CLEANING:

NOTE: Never leave unit unattended with power on. Turn OFF when emptying and filling reservoir. Do NOT oversaturate the carpet.

IMPORTANT: For best cleaning results use steady, moderate forward and backward motion.

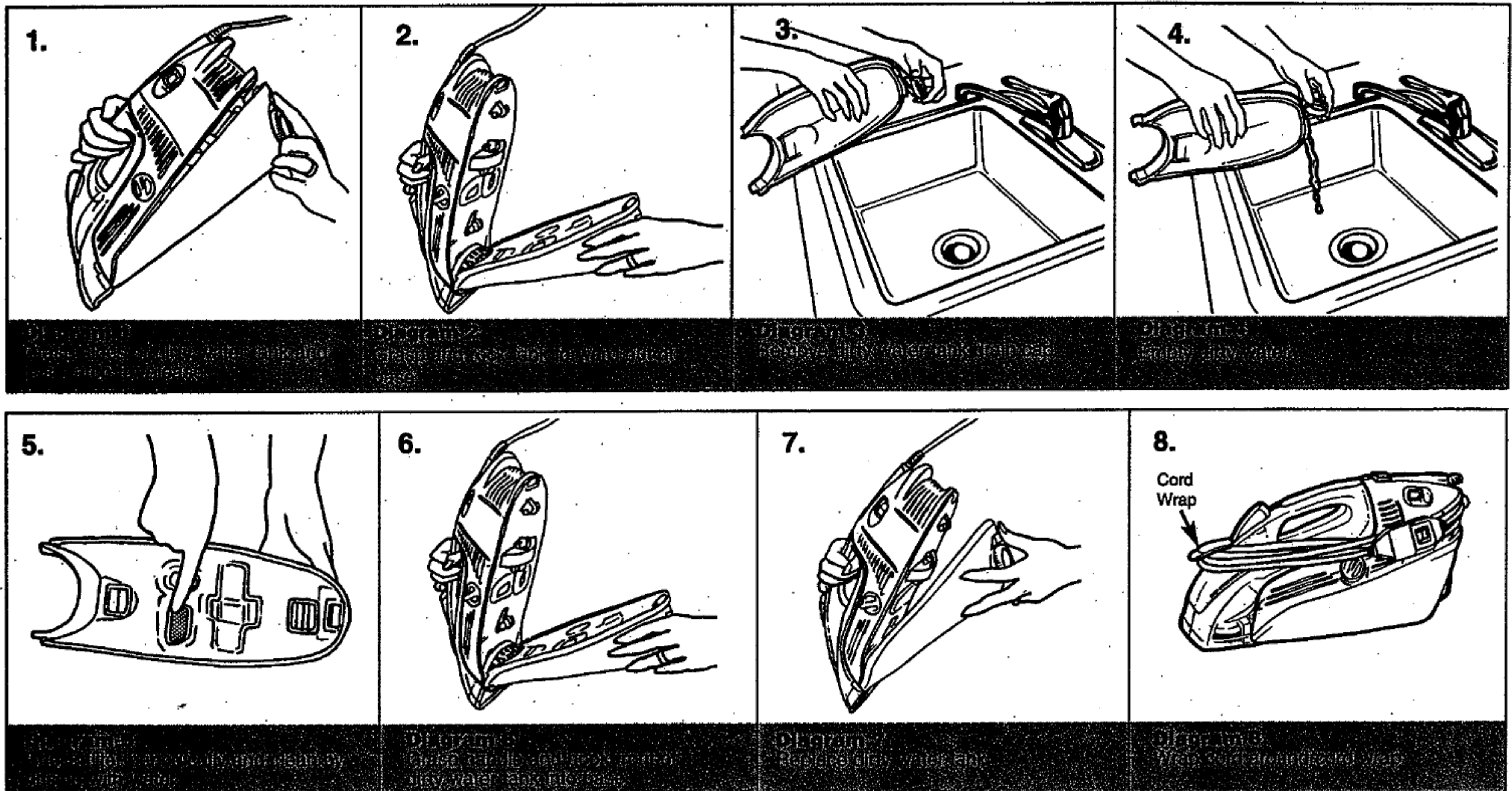
1. Plug cord into electrical outlet.
2. Turn power switch "on". Switch is located on rear left side of cleaner (Diagram 6).
3. The cleaning mode selector will switch power to either the "vacuum" (Diagram 7) or the "scrub" (Diagram 7a). For very wet areas, first try to vacuum the majority of the stain, removing as much liquid as possible. Then turn the cleaning mode selector to "scrub" (before spraying) and spray solution onto the stain. Allow the cleaning solution to penetrate stain for 2 minutes. Use rotating brush to agitate in a forward and backward motion using smooth steady strokes (Diagram 8). Next, change the cleaning mode selector to "vacuum" to pick up remaining moisture.

Empty the dirty water tank when:

- Dirty water reaches the "FULL" line on dirty water tank OR
- Float shuts off airflow, indicated by a change in pitch of the motor and reduced suction.

NOTE: Float may activate when unit is used vertically or turned on its side.

EMPTYING AND CLEANING DIRTY WATER TANK



EMPTYING AND CLEANING DIRTY WATER TANK:

WARNING: TO REDUCE THE RISK OF INJURY FROM MOVING PARTS - UNPLUG BEFORE SERVICING.

EMPTYING DIRTY WATER TANK:

WARNING: ALWAYS REMOVE DIRTY WATER TANK BEFORE EMPTYING.

NOTE: Do NOT remove dirty water tank with unit in upright position.

1. Grasp sides of dirty water tank and push latch to release (Diagram 1).
2. Grasp and rock tank forward out of base (Diagram 2).
3. Unscrew dirty water tank drain cap (Diagram 3).
4. Empty dirty water into sink (Diagram 4).
5. Replace dirty water tank drain cap.

CLEANING DIRTY WATER TANK:

1. Rinse dirty water tank with hot tap water.
2. Let dry thoroughly before storing to prevent mildew from forming.

NOTE: Do not use any chemicals when cleaning.

HOW TO CLEAN FILTER:

1. Check filter located on top of dirty water tank periodically and clean by rinsing with water when dirty (Diagram 5).

NOTE: Make sure to replace filter after cleaning.

PLACING DIRTY WATER TANK IN BASE OF CLEANER:

1. Grasp handle and hook front of dirty water tank into base of cleaner, making sure front of dirty water tank is hooked securely into the base (Diagram 6). The dirty water tank has 2 tabs on the underside which **MUST** latch into the underside of the base of the cleaner.
2. While making sure the front of the dirty water tank is hooked on the base, rock the rear of the tank into the base of the cleaner. Push down until it latches (Diagram 7). The dirty water tank will need to be emptied once or twice per fill up of the clean solution reservoir.

NOTE: Failure to install the dirty water tank correctly, will result in poor dirty water pickup.

NOTE: Do not store cleaner with solution in reservoir or dirty water in dirty water tank. Mineral deposits and mildew can form which will affect the performance of your Spot Scrubber™.

HOW TO STORE CLEANER:

1. Flip up cord wrap located on top of cleaner just below solution trigger. Wrap cord around cleaner using the cord wrap (Diagram 8).

WARNING: DO NOT STORE SPOT SCRUBBER™ IN GARAGE OR AREA WHERE UNIT COULD FREEZE.

TROUBLESHOOTING GUIDE

WARNING: TO REDUCE RISK OF PERSONAL INJURY - UNPLUG CLEANER BEFORE SERVICING

Problem	Possible Reasons	Possible Solutions
Cleaner won't run	<ol style="list-style-type: none"> 1. Power cord not firmly plugged into outlet. 2. ALCI needs to be reset. 3. Blown fuse or tripped breaker. 4. Needs service. 	<ol style="list-style-type: none"> 1. Plug unit in firmly. 2. Press reset button on ALCI. 3. Check fuse or breaker. Replace fuse/reset breaker. 4. Take to service center or call 1-800-321-1134.
Cleaner won't pick-up or low suction	<ol style="list-style-type: none"> 1. Dirty water tank is not installed correctly. 2. Dirty water tank is full. 	<ol style="list-style-type: none"> 1. Review Dirty Water Tank Removal and Replacement-Pg. 7. 2. Empty Dirty Water Tank-Pg. 7.
Water escaping from cleaner	<ol style="list-style-type: none"> 1. Dirty water tank is full. 2. Dirty water tank is not installed correctly. 3. Solution reservoir not installed properly. 	<ol style="list-style-type: none"> 1. Empty Dirty Water Tank-Pg. 7. 2. Review Dirty Water Tank Removal and Replacement-Pg. 7. 3. Review Solution Reservoir Installation-Pg. 6.
Cleaner won't dispense solution	<ol style="list-style-type: none"> 1. Spray nozzle clogged. 2. Solution reservoir not installed properly. 	<ol style="list-style-type: none"> 1. Clean thoroughly. 2. Review Solution Reservoir Installation-Pg. 6.

**ANY OTHER SERVICING SHOULD BE DONE BY AN AUTHORIZED SERVICE REPRESENTATIVE
CUSTOMER SERVICE (1-800-321-1134)**

In the event that further assistance is required, see your Yellow Pages for an authorized Royal® Dealer. Costs of any transportation to and from any place of repair are to be paid by the owner. The service parts used in this unit are easily replaced and readily available from an authorized Royal® Dealer or retailer. Always identify your cleaner by the model number and manufacturing code when requesting information or ordering replacement parts. (The model number appears on the back of the cleaner.)