



Work Instructions

Tesco Basestation Setup Instruction

Abstract

This document defines the setup to be used for the Tesco Basestation.

| | | |
|----------------------------|---------|---------------------|
| Prepared by: Shiv Sidar | Signed: | Date: 11/09/2006 |
| Authorised by: D.Dix | Signed: | Date: 11/09/2006 |

Amendment Record

| Amendment Number | Date | Amended by | Sections / Pages affected |
|------------------|----------|------------|---------------------------|
| 1 | 11/09/06 | S.Sidar | Initial Release |
| | | | |
| | | | |
| | | | |
| | | | |
| | | | |
| | | | |
| | | | |

Document Control

The distribution of this document is controlled in accordance with the ZBD Quality management system. The ZBD DCC is the responsible Control Centre.

The information disclosed herein is the exclusive property of ZBD Displays Ltd. and is not to be disclosed without the written consent of ZBD Displays Ltd. No part of this publication may be reproduced or transmitted in any form or by any means including electronic storage, reproduction, execution or transmission without the prior written consent of ZBD Displays Ltd.

This document is intended for limited circulation.

The information contained in this document is subject to change without written notice and should not be construed as a commitment by ZBD Displays Ltd. unless such commitment is expressly given in a covering document.

© Copyright ZBD Displays Ltd. (2006)



TABLE OF CONTENTS

| | | |
|----------|---|----------|
| 1 | INTRODUCTION..... | 1 |
| 2 | APPLICABLE DOCUMENTS..... | 1 |
| 3 | TESCO BASESTATION SETUP INSTRUCTION..... | 1 |



1 INTRODUCTION

Below are some notes on how to install the Tesco Basestation.

2 APPLICABLE DOCUMENTS

A. BOM – 120-0003-01.

3 TESCO BASESTATION SETUP INSTRUCTION

Firstly the following programs below need to be download and installed.

MSDE (Rel A)

.Net Framework 1.0 – dotnetredist.exe

Hot Fix .Net Framework 1.0 SPK 3

EMS – SQL Manager – SQL Manager 2005 for SQL Server Lite

Installing .Net Framework 1.0

Double click the executable file and following the on screen instructions, once completed restart machine.

Installing Hot Fix .Net Framework

Run the executable file and follow the on screen instructions and once completed restart machine.

Installing MSDE

Creating and installing an Instance for both databases – **Counters \ ZBDCounters**

Command:

C:\[Location of extracted MSDE]\[Setup InstanceName=[Name of Instance] SecurityMode=SQL BLANKSAPWD=1

eg. c:\MSDERelA\Setup InstanceName=Counters SecurityMode=SQL BLANKSAPWD=1

Counters Instance Setup

Setup InstanceName=Counters SecurityMode=SQL BLANKSAPWD=1

ZBDCounters Instance Setup

Setup InstanceName=ZBDCounters SecurityMode=SQL BLANKSAPWD=1

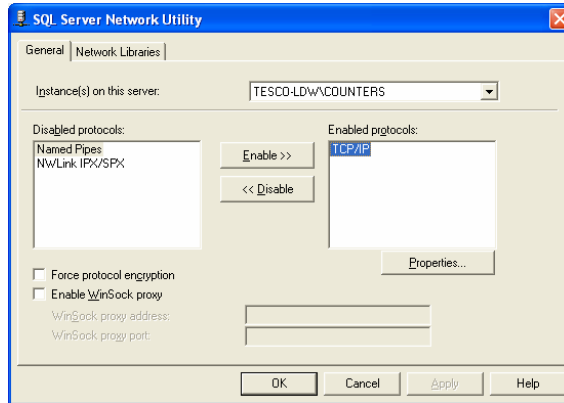
Configuring Network Access to the database (MSDE)

After installing and creating SQL Instances, it is necessary to configure the 'Instance' of the basestation which runs the database.

eg. [Basestation name]\[Database name].

This is done with svrnetcn:

C:\Program Files\Microsoft SQL Server\80\Tools\Binn\svrnetcn



Select the correct instance and enable TCP, as above. This need to be configured on both Instances. Once configured reboot machine.

Copy Folders

From P:\Customer\Tesco\TescoBasestationInstall
Folder Name: **ScalesClientInstall**
Folder Name: **ZBDApps**
To: Local Hard Disk C:\

Using OSQL - Location - c:\Program Files\Microsoft SQL Server\80\tools\binn>

From the local machine: type
osql -Usa -S(local)\Counters -P
or
Remotely: type
osql -Usa -S([basestation name])\Counters -P

Installing database –Tesco Counters

From osql, run the following command:

```
>osql
>1
```

Command:

```
restore database dxCountersClient
from disk='c:\ScalesClientInstall\TescoCountersDB\dxCountersClient'
with move 'dxCountersClient_data' to
'c:\ScalesClientInstall\dxCountersClient_data.mdf',
move 'dxCountersClient_log' to
'c:\ScalesClientInstall\dxCountersClient_log.ldf'
go
```

Installing database – ZBD Counters

From osql run the following command:

```
>osql
>1
```

Command:

```
Restore database TescoCountersDB
from disk='c:\ScalesClientInstall\ZBDCountersDB\TecometersDB.dat'
go
```



Example test command:

```
use dxCountersClient
go
select count(*) from txProduct
go
```

Installing Weighscale S/W

Add the 'Message Queueing' component from the Add/Remove components control panel section.

Copy TescoCounters folder from c:\ScalesClientInstall directory to c:\Program Files.

The following config options may need to be changed:

In file "**CountersClient.exe.config**":

```
<appSettings>
<add key="ConfigurationFile" value="CounterConfiguration.xml" />
  <add key="scaleattached" value="V" />
  <add key="printerenabled" value="N" />
  <add key="comport" value="3" />
  <add key="baudrate" value="38400" />
  <add key="databits" value="8" />
  <add key="stopbits" value="0" />
  <add key="parity" value="2" />
  <add key="flowcontrol" value="0" />
  <add key="readtimeout" value="500" />
  <add key="printerip" value="192.168.0.1" />
  <add key="printerport" value="2001" />
  <add key="shutdowncmd" value="shutdown.exe" />
  <add key="shutdownprms" value="-s -t 0 -f" />
  <add key="restartprms" value="-r -t 0 -f" />
  <add key="logfile" value="c:\CountersLog" />
```

Check that the following settings have been configured – example as above

scale attached = v
printer Enabled = N

V = Virtual
N = None

logfile – change drive letter depending on local drive – **eg.**
d:\Counterlog to c:\Counterlog

In file "**CounterConfiguration.xml**":

```
<appSettings>
  <add key="SqlXmlConnectionString"
  value="Provider=SQLOLEDB; data source=(local)\counters; initial
  catalog=dxCountersClient;uid=sa;pwd=" />
```



```
<add key="SqlConnectionString" value="data  
source=(local)\counters; initial  
catalog=dxCountersClient; uid=sa;pwd=" />
```

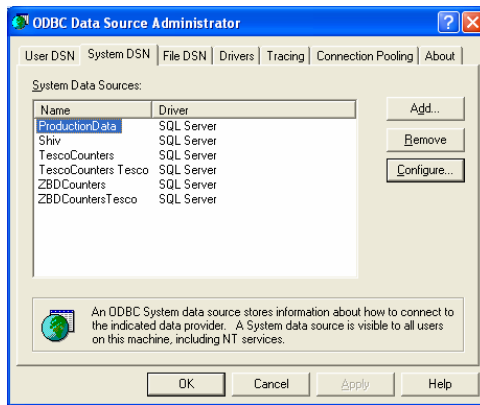
Check that both passwords have been set to null.

To run the weigh scale s/w, run CountersClient.exe

ODBC Setup – Tesco Basestation Databases

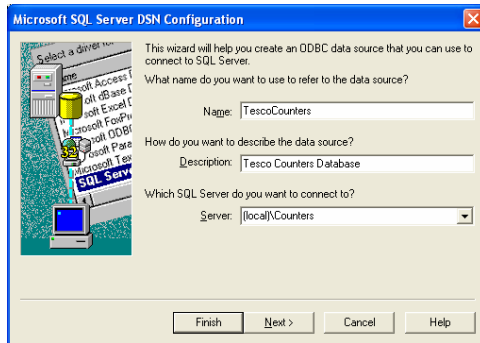
Configure ODBC Data Source – System DSN

Click Add – Create New Data Source – Use SQL Server

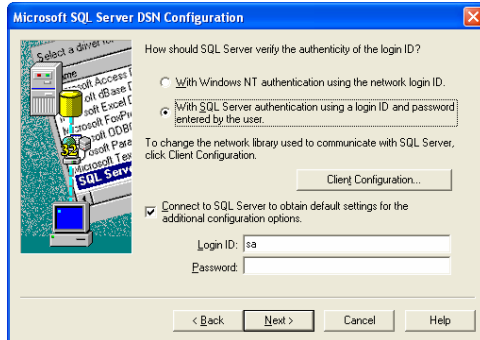


TescoCounters Database Setup – Settings

Enter the following details as below

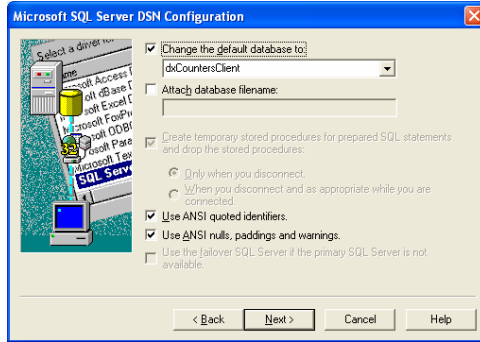


Click next >



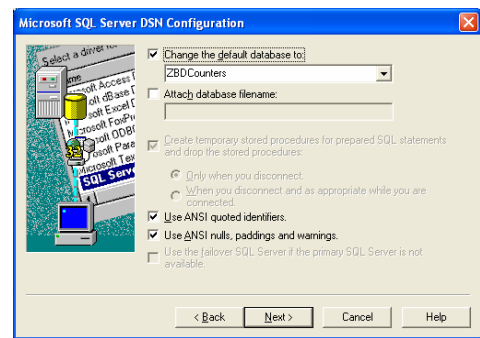
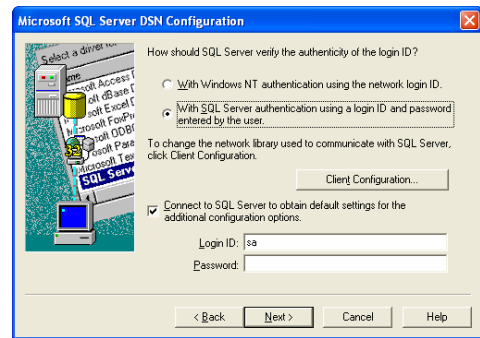
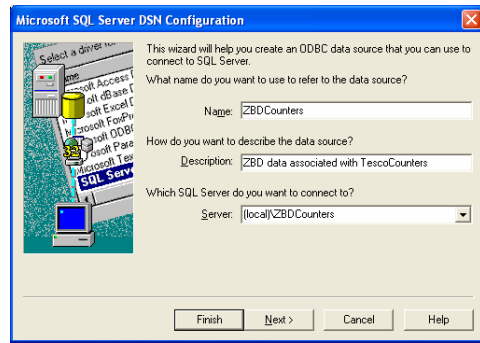


Configure the SQL authentication with Login ID – sa and select next >



Select the default database and click Next>

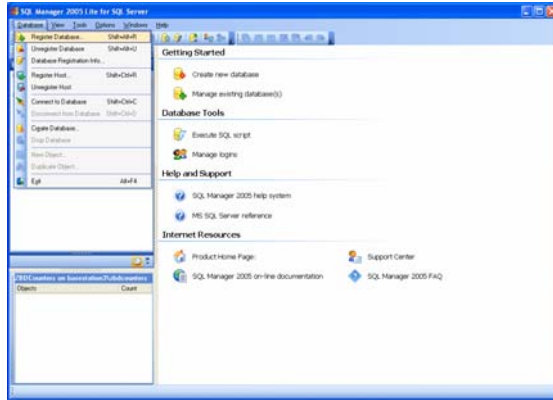
ZBDCounters Database Setup - Settings





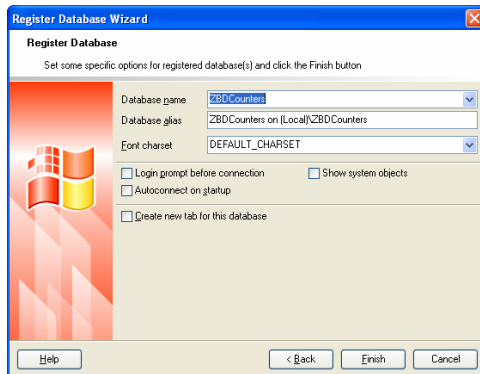
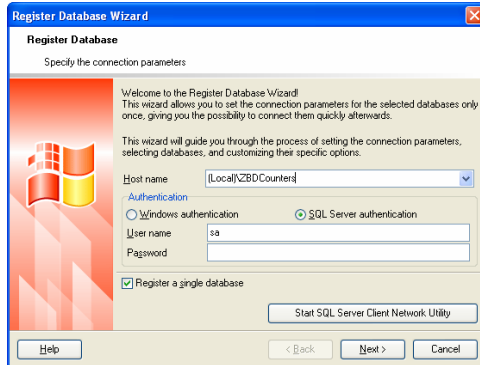
Install and configure SQL Manager 2005

Once installed, you need to register the two databases – ZBDCounters / Counters



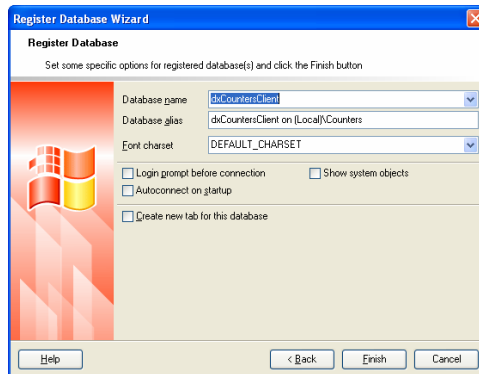
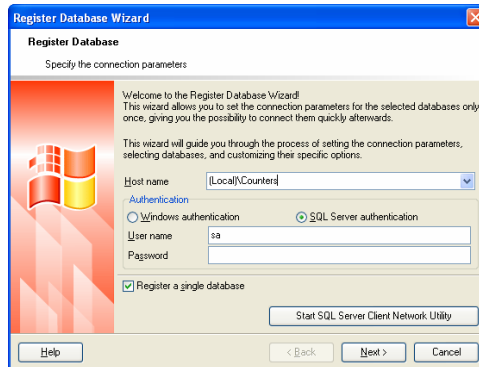
Register Database – ZBDCounters- Settings

Use the current screen shots configuration below for each database registration





Register Database – Counters- Settings



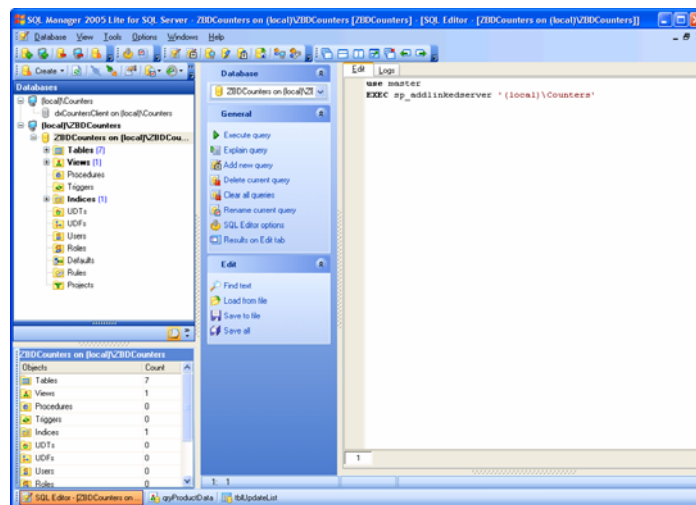
Link – Tesco Counters Database to ZBD Counters Database

In SQL Manager – connect the ZBDCounters instance and run the following command to link Counters to ZBDCounters databases

Command: -Using SQL Editor – ZBDCounters Instance

use master

Exec sp_addlinkedserver '(local)\Counters'



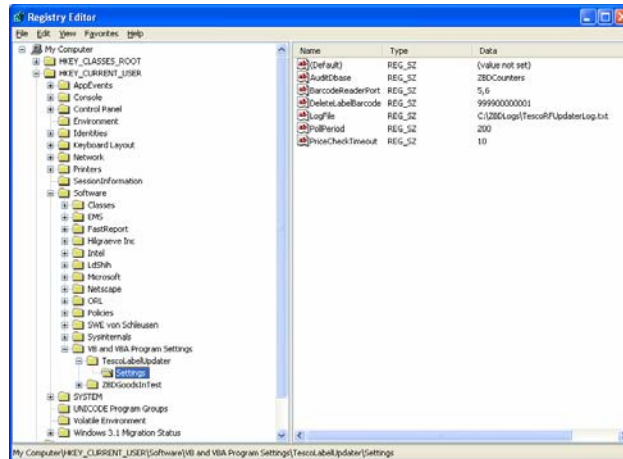


Registry Configuration

Import the following Reg Key – RF_REG.reg from location c:\ZBDApps\

Check reg key location in regedit

HKEY_CURRENT_USER\Software\VB and VBA Program
Settings\TescoLabel Updater



Batch Files

Create shortcuts to the following batch file to location
c:\Documents and Settings\ESEL\Start Menu\Programs\Startup
from c:\ZBDApps

Shortcut to startScales
Shortcut to startTescoAdmin
Shortcut to startTescoRFUpdater

BIOS – Settings

Power Management Setup
- AC Loss Auto Restart – On

Standard CMOS
- Halt on [All, but Keyboard]

Important .dll & .ocx

Check that the following DLL & OCX files are available in
c:\windows\system32 folder

MSCOMCTL.ocx
MSRDO20.dll
COMDLG32.ocx
MSCOMM32.ocx

You may be required to register MSRDO20.dll
Register .dll

**Command:**

```
regsvr32 c:\windows\system32\[.dll name]
```

eg. regsvr32 c:\windows\system32\MSRDO20.dll

Windows Firewall Settings

Exceptions – Add Program

Add all three sqlserver program executables to the exceptions list

c:\Program Files\Microsoft SQL
Server\MSSQL\$ZBDCounters\Binn\Sqlserver.exe

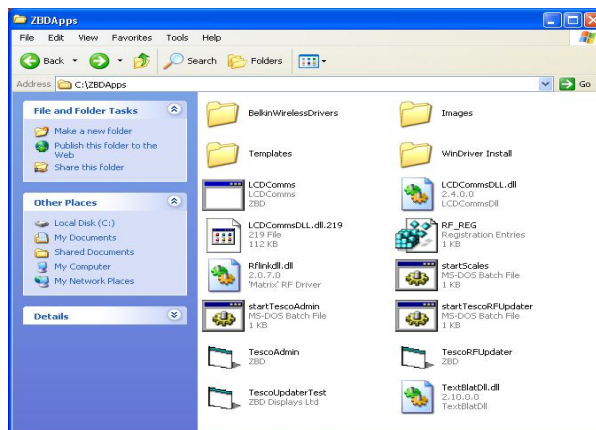
c:\Program Files\Microsoft SQL
Server\MSSQL\$Counters\Binn\Sqlserver.exe

c:\Program Files\Microsoft SQL Server\MSSQL\Binn\Sqlserver.exe

Attaching RF Dongle – (Matrix Dongle)

Go to the following folder location as below

c:\ZBDApps\WinDriver Install



Double click on the Install batch file (install.bat) to install drivers for dongle.

Next install the RF Dongle to any available USB port

On the “Welcome to the found new Hardware wizard” box
- Can windows connect to windows update to search for software

Select – No, not at this time and click **Next >**

Leave default – Install the software automatically (Recommended)
and click **Next >** This will now install the appropriate drivers required.

Once completed on the “Completing the found Hardware wizard” click
Finish >