

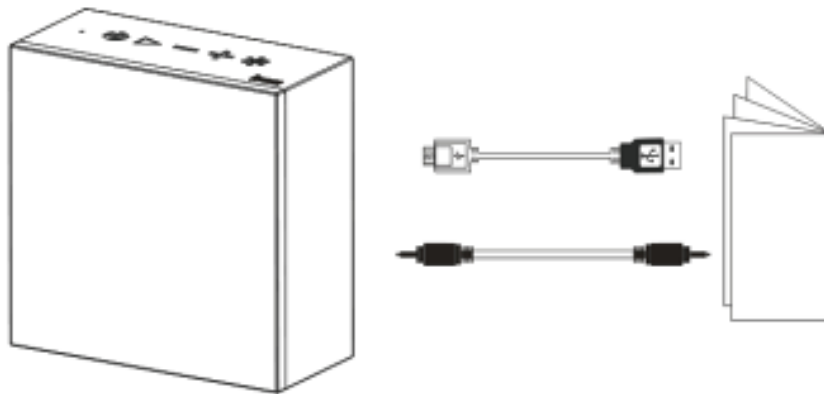
# User Manual

## Welcome:

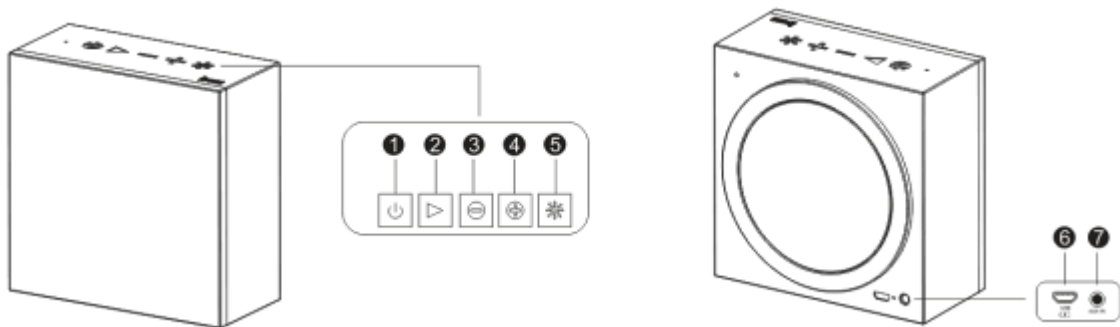
Thank you for purchasing this Divoom® product. AuraBox is a smart music gadget beyond your imagination. It is a Bluetooth speaker, a lamp, a digital palette, a thermometer, an alarm clock, all in one which await for your exploration. To be inspired by sound and light, try this box of wonder and fun.

## 1. What's in the box?

- 1 pc of Aurabox speaker
- 1 pc of USB recharging cable
- 1 pc of 3.5mm audio cable
- 1 pc of User Manual

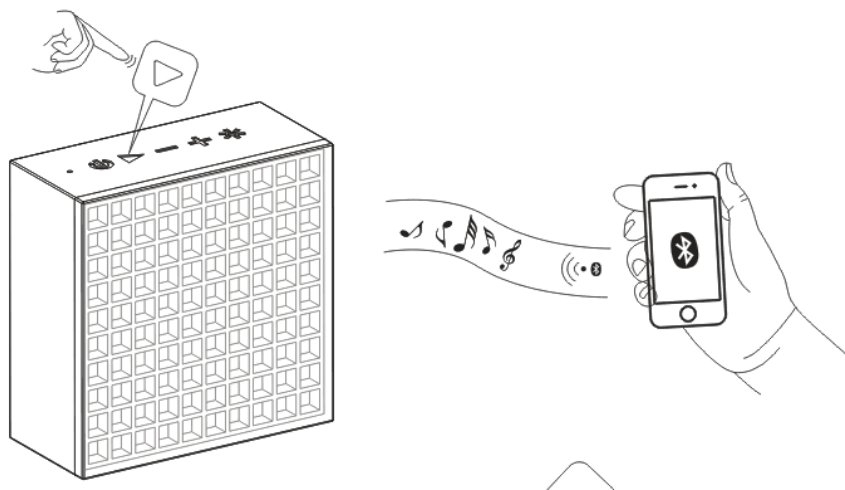


## 2. Buttons



1. ON/OFF button
2. Play / Pause / Hands free / Stop alarm
3. Short press: lower volume  
Long press: previous song
4. Short press: raise volume  
Long press: Next song
5. LED display effects changing button
6. Micro USB charging port
7. Aux in

### 3. Connecting and Using AuraBox



1) Download the Divoom AuraBox free App from App Store® or Google Play®  
2) Please connect/pair with the “AuraBox” in the device’s Settings/Bluetooth. For iOS, the process will require an extra pairing (Please launch the AuraBox App, click “connect” and select “AuraBox” to pair).

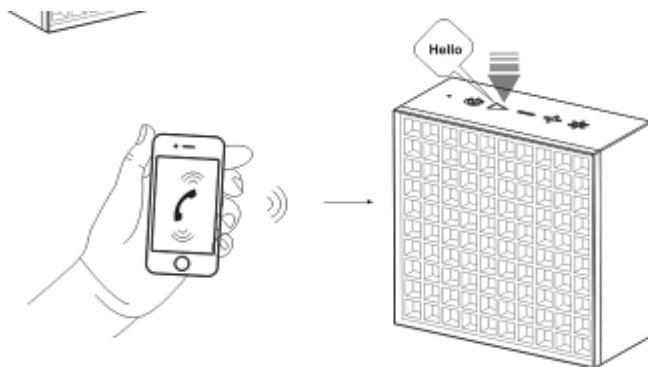
3) You can use AuraBox App to do the following:

- stream music from your mobile device to the AuraBox via Bluetooth
- Select songs from your iTunes library and adjust the speaker volume
- Choose different drawing patterns from the Gallery or create your own in Design.
- Set your custom sleep or wake up timer with your favorite music and lighting
- Customize the notification settings to alert a social media update

※ To switch your current connected device to another Bluetooth device, please follow these steps

- 1: Press and hold hands free button
- 2: The panel blue LED will blink rapidly with Bluetooth icon
- 3: Search and pair the speaker on your other Bluetooth device

### 5. Hands-free



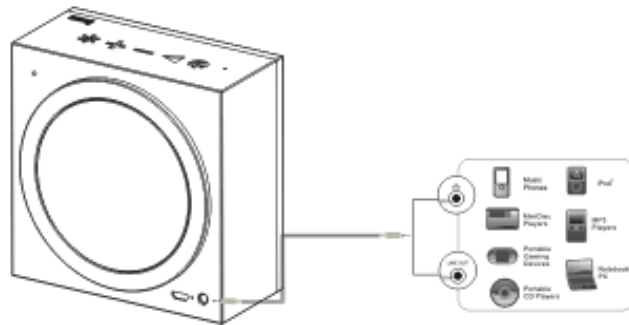
Press the Hands free button to pick up an incoming call.

**OR**

Press and hold the Hands free button for 2 seconds to reject an incoming call

## 6. Non-Bluetooth devices

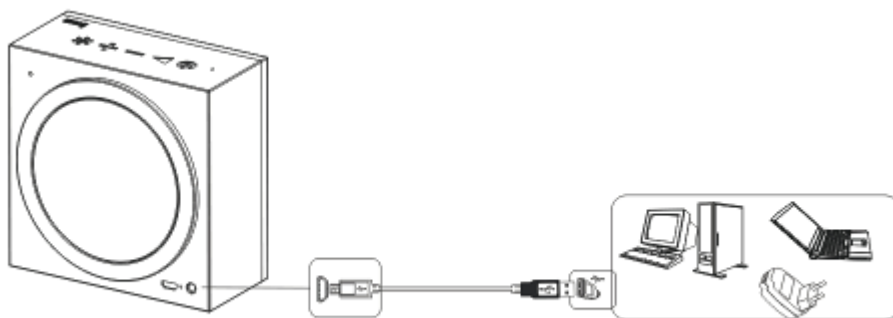
Please connect the two devices via the 3.5mm Auxiliary cable (provided)



## 7. How to charge the speaker?

This speaker can be charge by most computer USB port and AC adaptor. The charging time may vary by the specification of the charging port/adaptor. A full charge will usually take 3~4 hours.

※ **To access the current battery level:** Please press the power button, and the LED screen will display the current battery level.



## 8. LED display effect

Press the lighting button to switch between the different light effects.

※ **Search and install “Divoom AuraBox” App onto your mobile device to access the additional features on your AuraBox.**



## 9. Features

- It's a Smart Alarm Clock, wake up and sleep with your favorite music and lighting
- It's a Brilliant LED lamp, create the most relaxing environment with your favorite tune.
- It's a Smart Gadget that will bring the social events notification to your attention.
- It's a World-class Bluetooth Speaker with a built-in MIC, experience the rich details of your music and never miss a call.
- It's a Creative Digital Palette, select our fun templates in the gallery or create yours with your own inspiration and attitude.

### **FCC Certification Requirements**

**Caution: Any changes or modifications in construction of this device which are not expressly approved by the party responsible for compliance could void the user's authority to operate the equipment.**

**This device complies with part 15 of the FCC Rules. Operation is subject to the following two conditions: (1) This device may not cause harmful interference, and (2) This device must accept any interference received, including interference that may cause undesired operation.**

**The manufacturer is not responsible for any radio or TV interference caused by unauthorized modifications to this equipment. Such modifications could void the user's authority to operate the equipment.**

**This equipment has been tested and found to comply with the limits for a Class B digital device, pursuant to Part 15 of the FCC Rules. These limits are designed to provide reasonable protection against harmful interference in a residential installation. This equipment generates, uses and can radiate radio frequency energy and, if not installed and used in accordance with the instructions, may cause harmful interference to radio communications. However, there is no guarantee that interference will not occur in a particular installation. If this equipment does cause harmful interference to radio or television reception, which can be determined by turning the equipment off and on, the user is encouraged to try to correct the interference by one or more of the following measures:**

- Reorient or relocate the receiving antenna.
- Increase the separation between the equipment and receiver.
- Connect the equipment into an outlet on a circuit different from that to which the receiver is connected.
- Consult the dealer or an experienced radio/TV technician for help.