












Remote Control Motorized TV Wall Mount


• LEARN MODE instructions as shown below:

- STEP1:** Press and hold  for 5 seconds until LED light on the matched remote control stays on, and then press . The buzzer will sound once, the red LED light on the IR receiver will stay on, then the **LEARN MODE** will be entered.
- STEP2:** If **LEARN** , please press  on the matched remote control until the buzzer sounds twice, the red LED light on the IR receiver will change from being steady to a slow flash.
- STEP3:** Aim the TV remote at the IR receiver, and press the button on the TV remote that you need to set as the function of  button until the buzzer sounds three times. the red LED light on the IR receiver will change from slow flash to a fast flash.
- STEP4:** Press  button on the matched remote control until the buzzer sounds four times. The red LED light on the IR receiver will turn off.  Button will be **LEARNED** successfully. If the buzzer only sounds once, then a **LEARN** failure.(The TV remote won't support the **LEARNING** function).

(Please follow step1 through step4 in turn if the user need to **LEARN** more buttons)

Learn "Power" button on the TV remote:

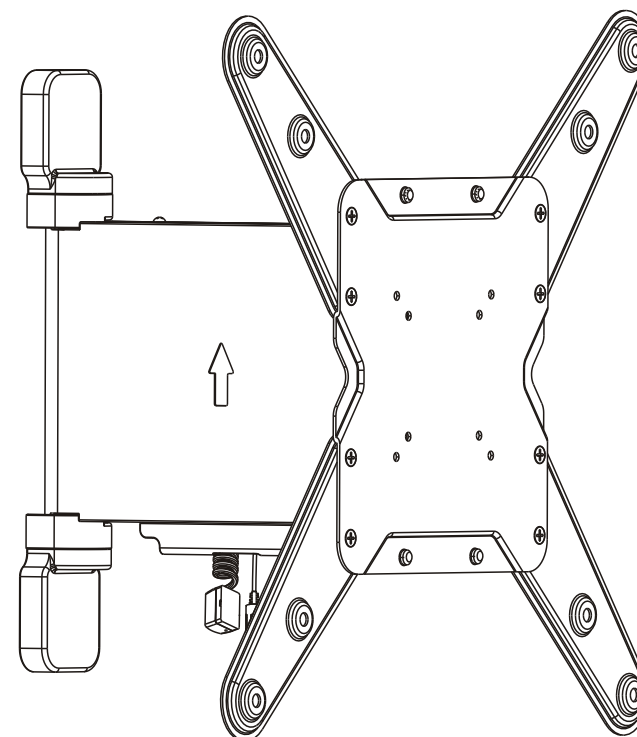
Press and hold  for 5 seconds until LED light on the matched remote control stays on, and then press . The buzzer will sound once, the red LED light on the IR receiver will stay on, then press and hold  button on the matched remote control until the buzzer sounds twice, then release the  button. The red LED light on the IR receiver will change from being steady to a slow flash.

Aim the TV remote at the IR receiver, and press "Power" button. The buzzer will sound three times. The red LED light on the IR receiver will change from slow flash to a fast flash. Press  button on the matched remote control until the buzzer sounds four times. The red LED light on the IR receiver will turn off. "Power" button will be **LEARNED** successfully. If press "power" button, the TV wall mount will automatically reset.

Note: When there is no activity for over 20 seconds in any step .TV remote will automatically exit from the **LEARN MODE**.

Maintenance

- Check that the bracket is secure and safe to use at regular intervals(at least every three months).
- Please contact your distributor if you have any questions.



CAUTION: DO NOT EXCEED
RATED LISTED WEIGHT. SERIOUS
INJURY OR PROPERTY DAMAGE
MAY OCCUR!

PLB-M04-441



75x75/100x100
200x100/200x200
300x300/400x200
400x400



55"
MAX



35kg
(77lbs)
RATED

ISSUED: JUNE. 2013

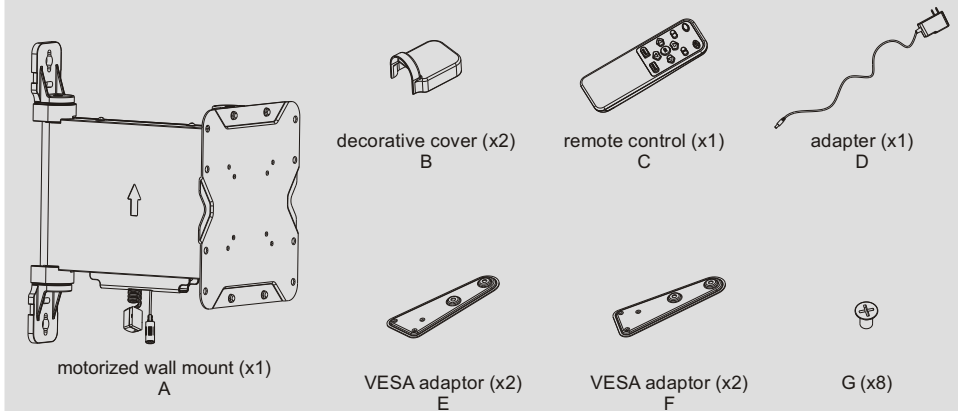
NOTE: Read the entire instruction manual before you start installation and assembly.

⚠ WARNING

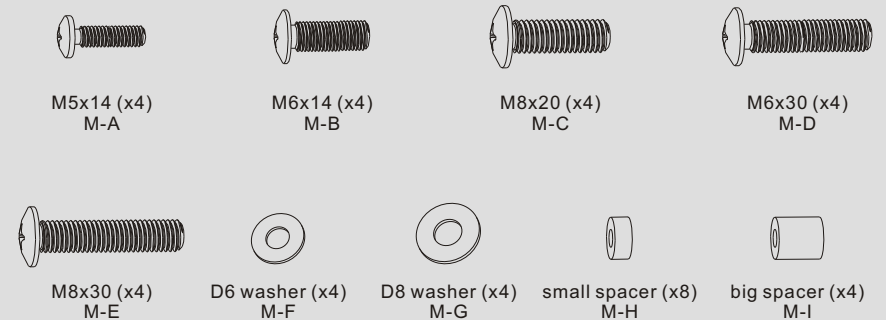
- Do not begin the installation until you have read and understood all the instructions and warnings contained in this installation sheet. If you have any questions regarding any of the instructions or warnings, please contact your local distributor.
- This mounting bracket was designed to be installed and utilised **ONLY** as specified in this manual. Improper installation of this product may cause damage or serious injury.
- This product should only be installed by someone with good mechanical ability who has basic building experience and fully understands this manual.
- Make sure that the supporting surface will safely support the combined weight of the equipment and all attached hardware and components.
- If mounting to wood wall studs, make sure that mounting screws are anchored into the center of the studs. The use of a stud finder is highly recommended.
- Always use an assistant or mechanical lifting equipment to safely lift and position the equipment.
- Tighten screws firmly, but do not over tighten. Over tightening can cause damage to the items, This greatly reduces their holding power.
- This product is intended for indoor use only. Using this product outdoors could lead to product failure and personal injury.

Component Checklist

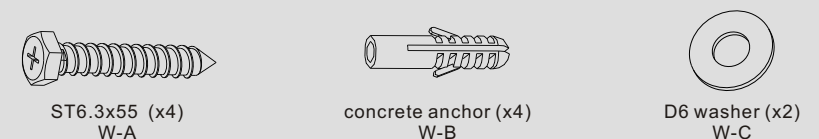
IMPORTANT: Ensure that you have received all parts according to the component checklist prior to installation. If any parts are missing or faulty, telephone your local distributor for a replacement.



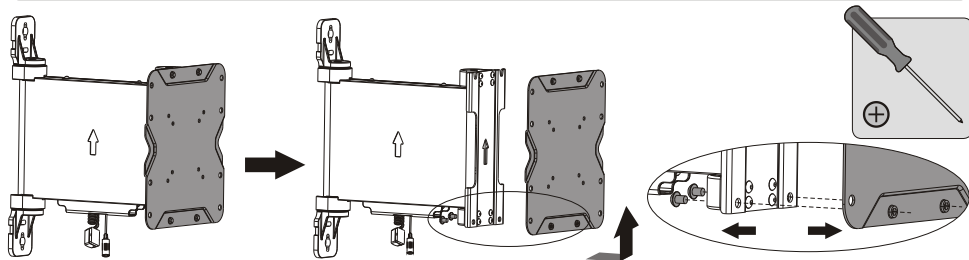
Package M



Package W

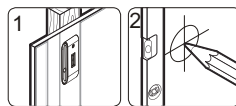
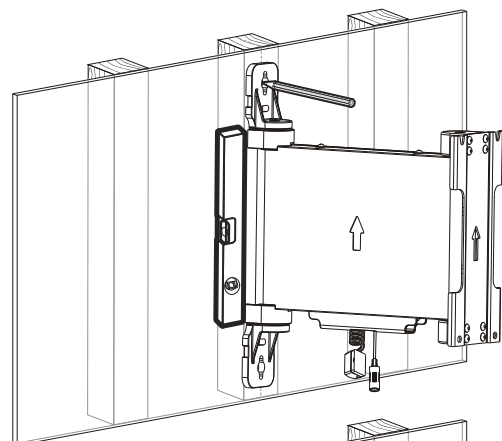
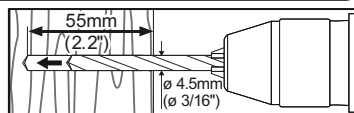
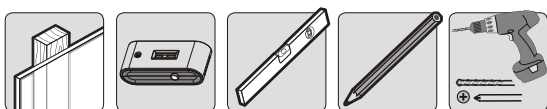


1. Removing the VESA Plate

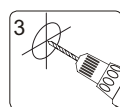


Use a phillips screwdriver to remove the both bottom screws in order to separate the VESA plate from the wall mount.

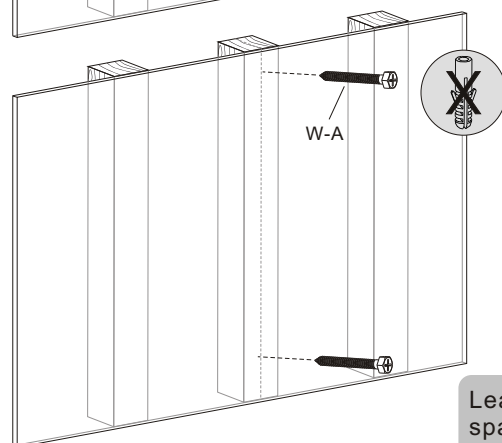
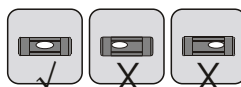
2a. For Wood Stud Wall Mounting



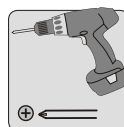
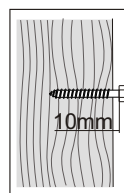
Find and mark the exact location of mounting holes



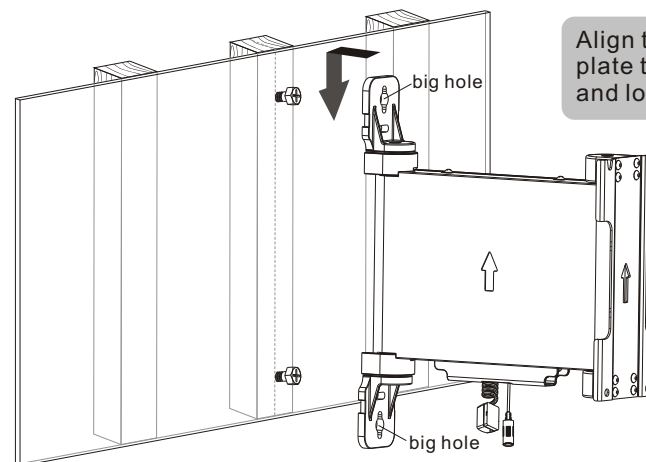
Drill pilot holes



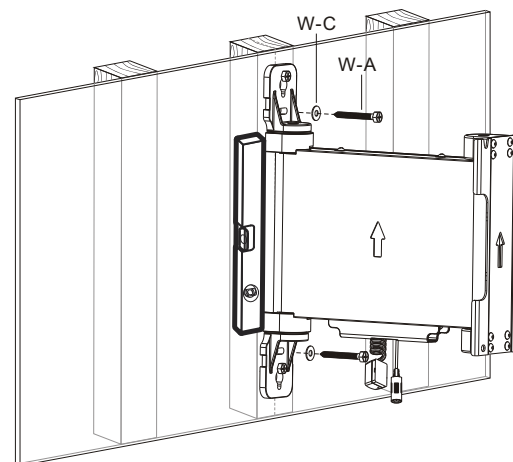
Leave the screw head with 10mm space from the wall.



Screw the wall mount onto the wall



Align the big holes on the wall plate to the screws in the wall and lower the wall plate.



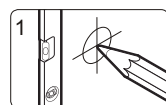
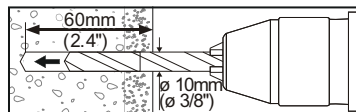
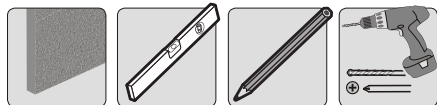
Install the other two screws and level the wall plate, then tighten all screws for security.

With the arrow pointing up.

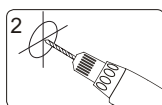
⚠ WARNING

- Make sure that mounting screws are anchored into the center of the studs. The use of a stud finder is highly recommended.
- Installers are responsible to provide hardware for other types of mounting situations.
- Installers must verify that the supporting surface will safely support the combined weight of the equipment and all attached hardware and components.

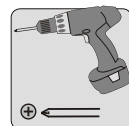
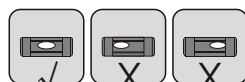
2b. For Solid Brick and Concrete Mounting



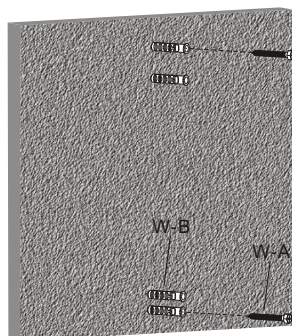
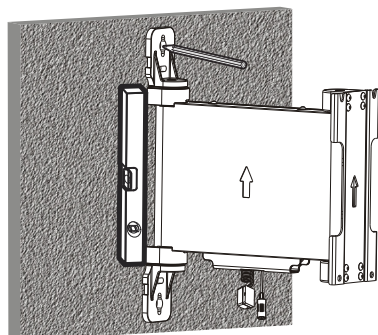
1
Mark the exact location of mounting holes



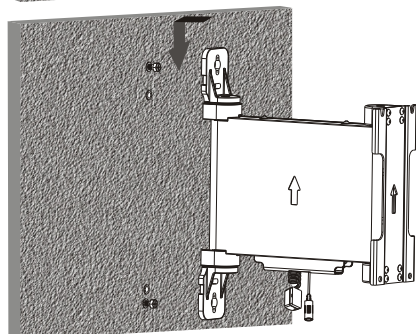
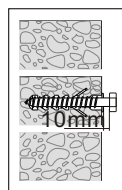
2
Drill pilot holes



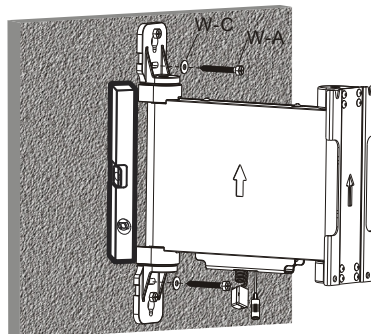
Screw the wall mount onto the wall



Leave the screw head with 10mm space from the wall.



Align the big holes on the wall plate to the screws in the wall and lower the wall plate.



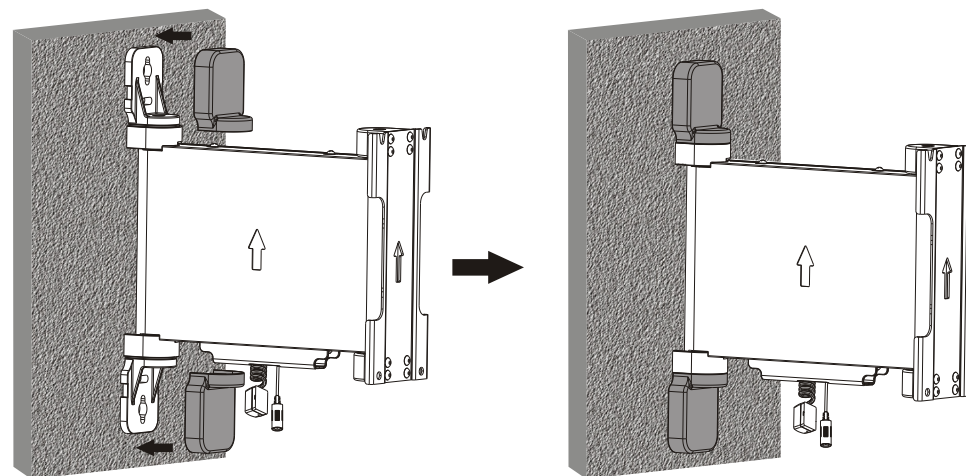
With the arrow pointing up.



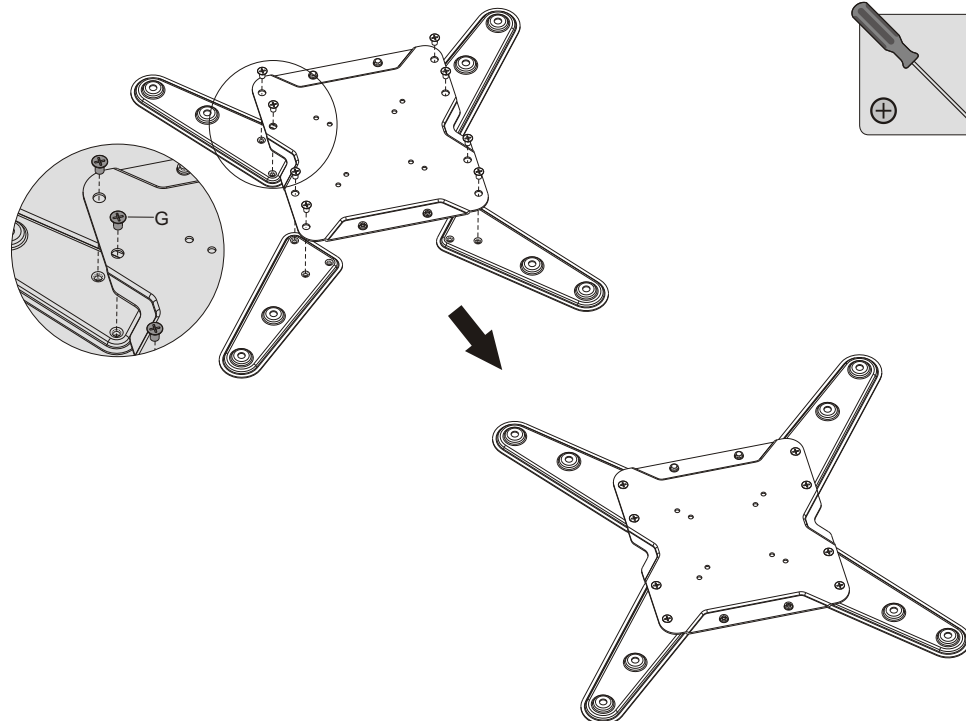
WARNING

Installers must verify that the supporting surface will safely support the combined weight of the equipment and all attached hardware and components.

3. Installing the Decorative Covers

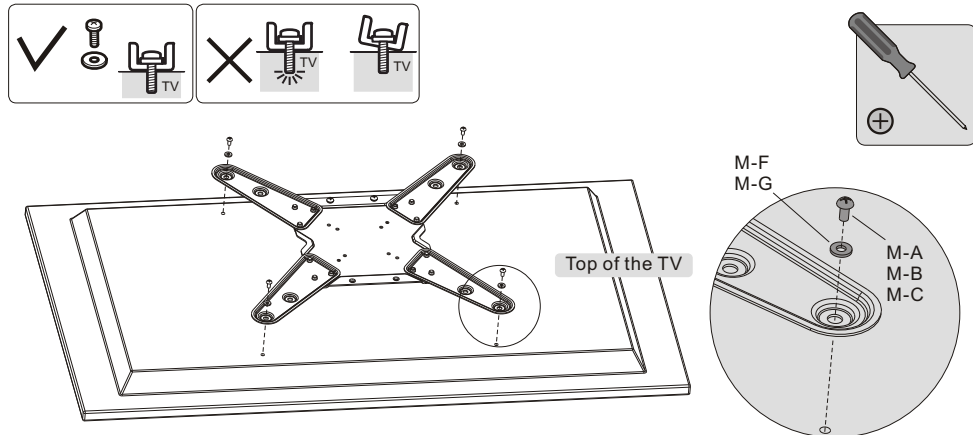


4. Assembling the VESA Adapters

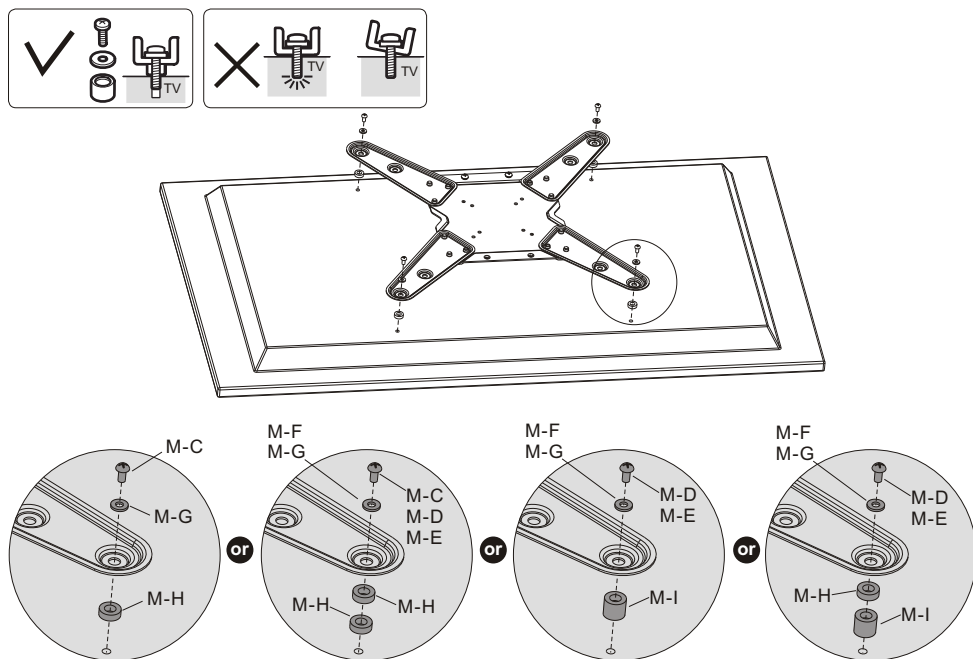


5. Installing the VESA Plate

5-1. For Flat Back Screens



5-2. For Recessed Back Screens or to Access A/V Inputs

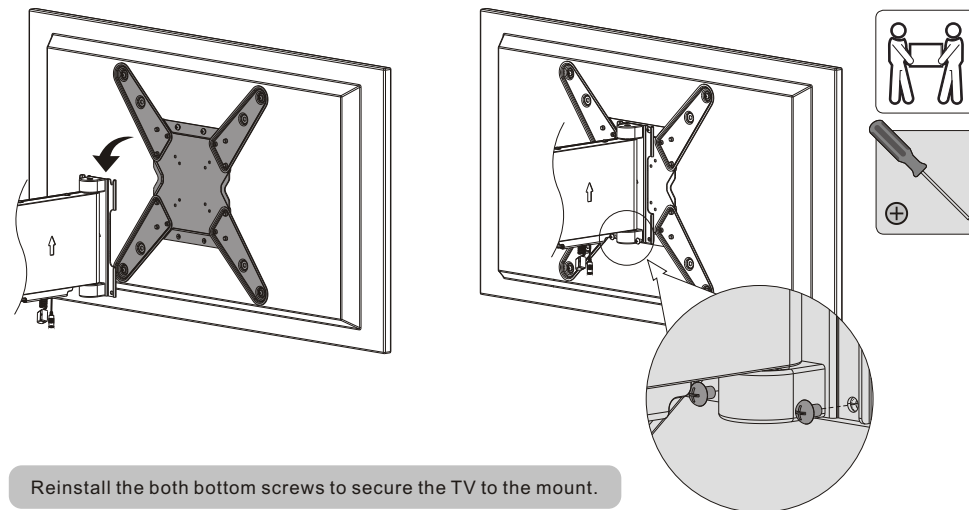


Note: Choose the appropriate screws, washers and spacers (if necessary) according to the type of screen.

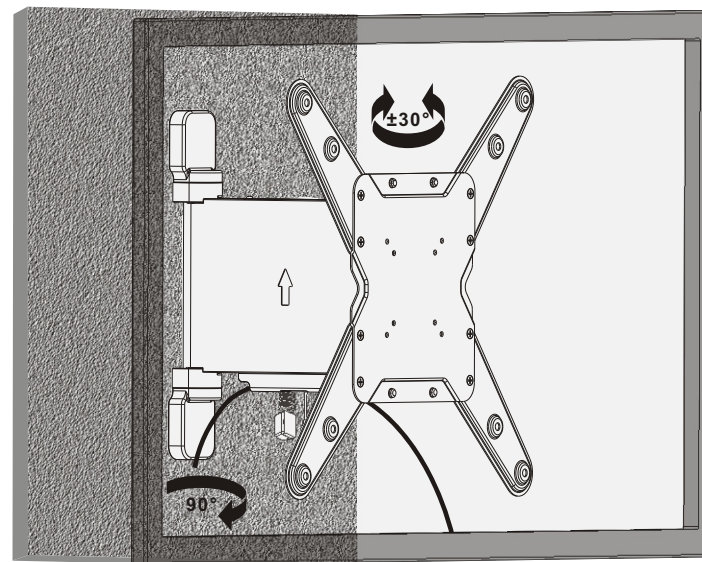
• Screw the VESA plate onto the TV.

⚠ Tighten all screws but do not over tighten.

6. Hooking the TV onto the Wall Mount



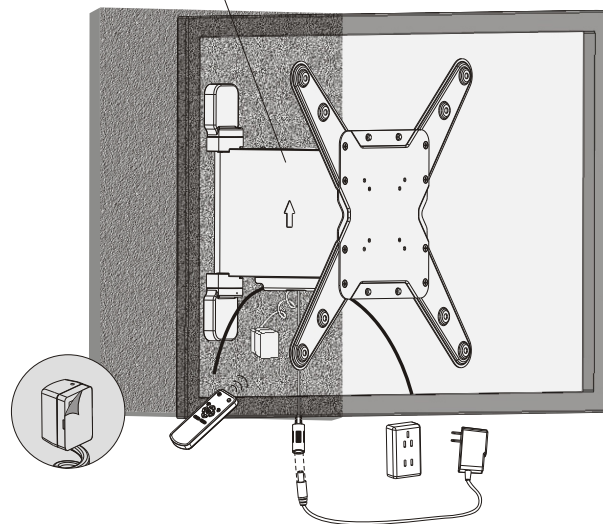
7. Cable Management



Connect the cables to your TV and route through the cable clips.
Note: Leave slack in the cables for arm movement.

8. Placing the IR Receiver

 Do not open the electrical cover please.

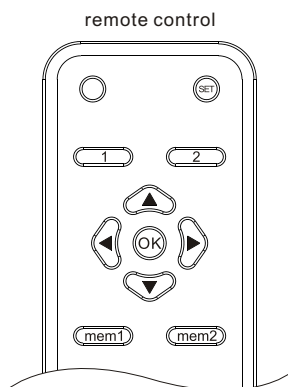


 Do not plug into the power outlet until it is ready to be operated.


Peel the backing paper. Place the IR receiver into desired position.
Make sure nothing will obstruct the transmission from where the TV will be viewed.

9. The Remote Control Operating Instructions

Remote control operation instructions




STEP 1: When powered, the buzzer sounds once beep, TV wall mount will be in standby state.

STEP 2: Press  to return the TV wall mount flat against the wall and hear one beep from the buzzer, the system will then enter a working condition.



STEP 3: Follow the Key function instructions below to operate.

Note: • If TV wall mount encounters an obstacle or has some damage of machinery part in the process, TV wall mount will stop automatically and sound three times beep beep beep.



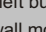
• When the wall mount meets with an obstacle in the process. Please remove the obstacle and push the wall mount by hand until returns it flat against the wall. The wall mount can normal use after press  button.



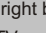
Buttons function instructions

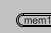
 Out button. Press and release . The TV wall mount will fully unfold.


 In button. Press and release . The TV wall mount will automatically return to rest against the wall.


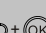
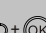

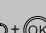
 Stop button

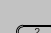
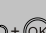
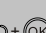
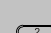
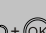
 The left button. Press and release , the TV wall mount will swivel to the left until  is pressed or the TV wall mount swing to -30 degrees to stop. (Note : Using this button is valid only when the wall mount fully unfolds.)

 The right button. Press and release , the TV wall mount will swivel to the right until  is pressed or the TV wall mount swing to 30 degrees to stop. (Note : Using this button is valid only when the wall mount fully unfolds.)

 Memory button1. Press and hold for 5 seconds, the buzzer will sound twice beep beep, LED light will turn on for 1second, The memory is saved as location 1.

 Memory button2. Press and hold for 5 seconds, the buzzer will sound twice beep beep, LED light turn on for 1second, The memory is saved as location 2.

 +  To recall the  button(location 1). Press and release  button, and then press  button, The TV wall mount will automatically swivel to the location1 after the buzzer sounds once.




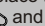

 +  To recall the  button(location 2). Press and release  button, and then press  button, The TV wall mount will automatically swivel to the location2 after the buzzer sounds once.

 +  Learning button, Please read the instructions below for more info.

LEARN MODE operation instructions

The loss of matched remote control would result in TV wall mount being unusable. The **LEARN MODE** is used to learn how to use TV remote (ONLY suitable for the TV remote of popular brands.) to control TV wall mount.

Note:

• TV remote can't replace the all functions of matched remote control. Only **LEARNING** the five buttons functions. With , , ,  and  respectively.

• The user must follow the rules below when using the TV remote to control TV wall mount.

Select the alternate buttons from the TV remote, and the button that can't direct control the TV .