

Recliners

**Mobile Recumbent Chairs
IH6065 and IH6074 Series**

**Clinical Treatment Chairs
IH6077 Series**



Yes, you can.

Parts Catalog Usage Guide

The information contained in this document is subject to change without notice. This catalog contains service parts for Form No. 04-047. If you have any questions regarding this catalog, please contact one of our Customer Service Representatives.

For Customer Service Support Call:

1-800-333-6900

For Faxed In Orders Call:

1-800-678-4682 or

1-440-366-0709

For Technical Service Call:

1-800-832-4707

Literature Can Be Found at:

www.invacare.com or

1-800-828-6272

SYMBOL DEFINITION

Throughout this catalog you will notice letters to draw your attention to specific footnotes which are located at the bottom of the page or below specified charts.

Examples:

A,B,C etc. = Special Comments

NOTE: = General information pertaining to that specific page

NLA = No Longer Available

HARDWARE MEASUREMENTS

The measurements for the hardware will be listed as follows:

Screws, Bolts Diameter X Thread Count/Pitch X Length

Washers Inside Diameter X Outside Diameter X Thickness

Spacers Inside Diameter X Outside Diameter X Length

For your convenience, we have supplied an area for you to list your Invacare Representatives.

Name	Phone Numbers

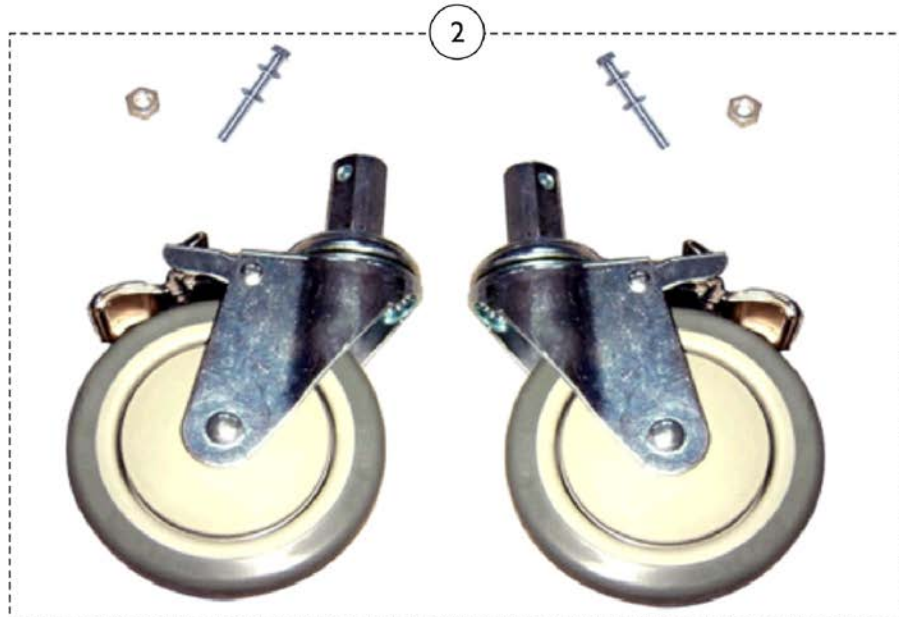
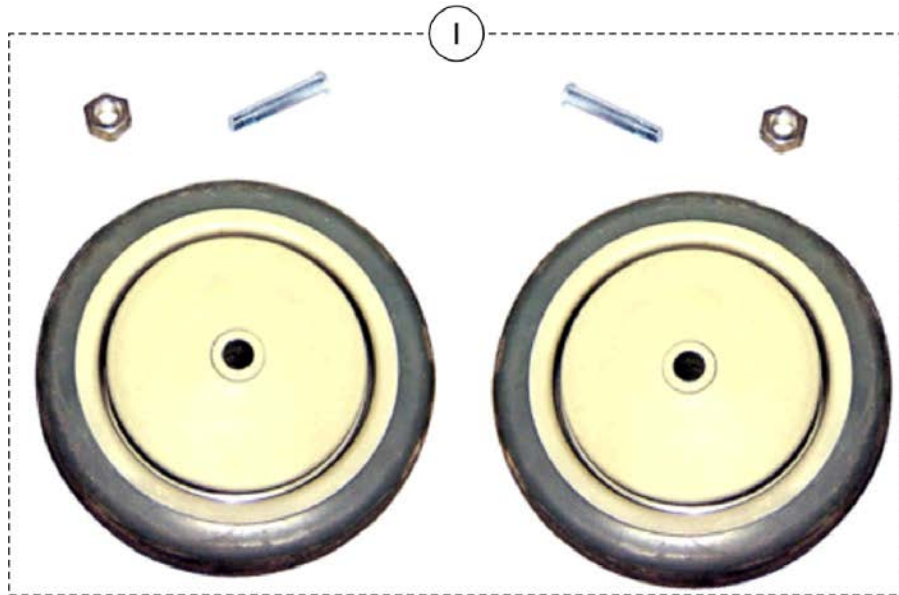
© 2014 Invacare Corporation, Elyria, Ohio. Invacare, the Medallion Design and Yes, you can. are registered trademarks of the Invacare Corporation. Information is subject to change without notification.

TABLE of CONTENTS

Description	Page Number
Caster Kits - IH6065 Series	3
Caster Kits - IH6074 Series	12
Caster Kits - IH6077 Series	20
Mechanical Hardware Kits - IH6065 Series	5
Mechanical Hardware Kits - IH6074 Series	13
Mechanical Hardware Kits - IH6077 Series	24
Tray and Side Panel Kits - IH6065 Series	7
Tray and Side Panel Kits - IH6074 Series	15
Tray and Side Panel Kits - IH6077 Series	22
Upholstery Kits - IH6065 Series	9
Upholstery Kits - IH6074 Series	17
Upholstery Kits - IH6077 Series	26

Caster Kits - IH6065 Series

Models 6065A, 6065DA, 6065PT & 6065WD



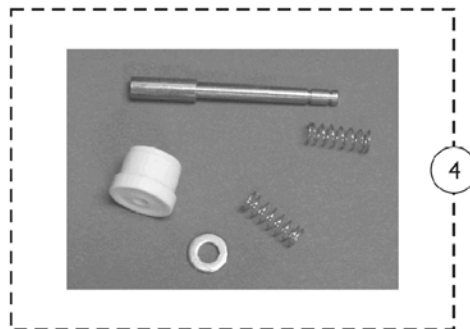
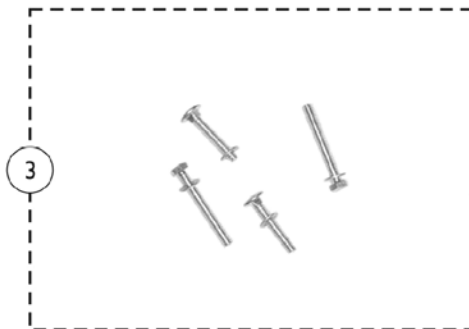
Caster Kits - IH6065 Series

Models 6065A, 6065DA, 6065PT & 6065WD

Item Number	Note	Part Number	Description	Quantity Per	
				Package	Assembly
1	A	1126605	Kit, Casters - Front	1	1
2	B	1126606	Kit, Casters - Rear	1	1
NOTE: A - Kit includes: (2) Casters, (2) Pan Head Stem Bolts (10M x 16) and (2) Nylock Nuts (10mm). B - Kit includes: (2) Locking Casters, (2) Hex Head Stem Bolts (M6 x 43), (4) Washers (6mm) and (2) Hex Nuts (6mm).					

Mechanical Hardware Kits - IH6065 Series

Models 6065A, 6065DA, 6065PT & 6065WD



Mechanical Hardware Kits - IH6065 Series

Models 6065A, 6065DA, 6065PT & 6065WD

Item Number	Note	Part Number	Description	Quantity Per	
				Package	Assembly
1	A,J	1126608	Bar, Push, Back	1	1
2	B	1126609	Reclining Mechanism Assembly w/ Hardware	1	1
3	C	1126607	Kit, Hardware	1	1
4	G	1163840	Pin, Plunger w/ Hardware	1	1
	F,H	1165494	Bar, Push w/ Attaching Hardware	1	1
	D,E	1163960	Ratchet Assembly, Grey - 6065A, 6074A	1	1
	D,F	1162517	Ratchet Assembly, Grey - 6065WD	1	1
<p>NOTE: A - Includes (2) Hex Head Screws (M6 x 55). B - Kit includes: (2) Reclining Mechanisms, (2) Finger Guards, (8) Phillips Head Screws (M6 x 40) and (8) Hex Nuts (6mm). C - Kit includes: (2) Phillips Head Screws (M6 x 35) with (2) Washers (6mm) and (2) Hex Head Bolts (M6.35 x 50) with (2) Washers (6.35mm). D - Not Shown. E - Use only with IH6065A model. F - Use only with IH6065WD model. G - Kit includes Plunger Pin (1), Plunger Cap (1), Spring (2) and Washer (1). H - Kit includes Hex Head Screw (2), Washers (2) and Handle. J - Used with the IH6065A and IH6065DA only.</p>					

Tray and Side Panel Kits - IH6065 Series

Models 6065A, 6065DA, 6065PT & 6065WD



Tray and Side Panel Kits - IH6065 Series

Models 6065A, 6065DA, 6065PT & 6065WD

Item Number	Note	Part Number	Description	Quantity Per	
				Package	Assembly
1	A	1126611-NLA	NLA - Kit, Side Panels - Plastic (31.8" x 16.8")	1	1
			Panel, Side - Vacuum Formed - Right	1	1
			Panel, Side - Vacuum Formed - Left	1	1
1	A	1164310	Kit, Side Panels - Plastic (32.33" x 17.24")	1	1
			Panel, Side - Vacuum Formed - Right	1	1
			Panel, Side - Vacuum Formed - Left	1	1
2	B,C	1126610	Tray Assembly (For Model IH6065A ONLY)	1	1
3		1134780	Kit, Tray Maintenance	1	1
4	D,E	See Chart	Side Panel Kit	1	1

NOTE: A - To determine which part number to use, measure the outside dimension (length and width) to match part number to order.
 B - Tray Assembly is only available on Model IH6065A.
 C - Includes: Tray, (2) Mounting Tubes and Socket Screws (M5 x 15).
 D - Includes: (2) Upholstery Side Panels and (6) Phillips Head Screws (M5 x 40). Available for Model IH6065DA only. See Chart for colors.
 E - Not Shown.

Side Panel Kits

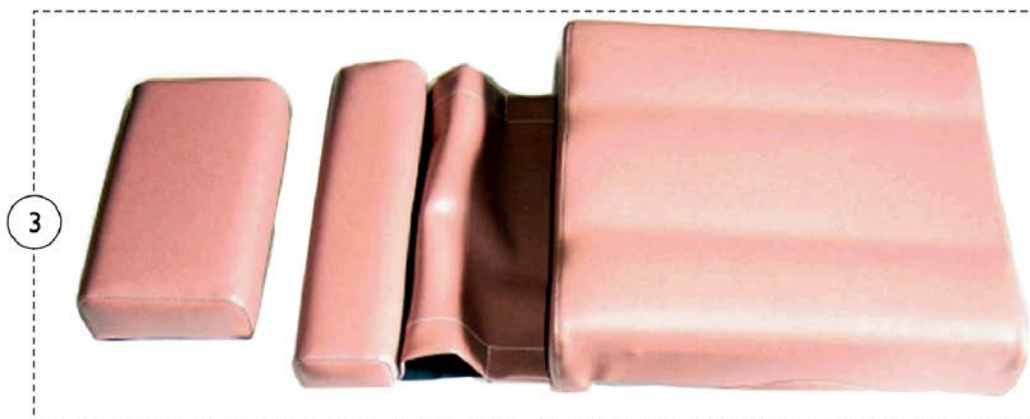
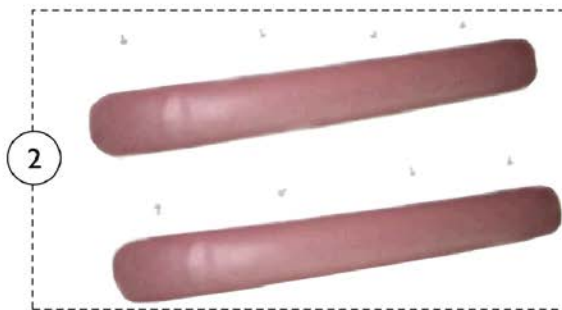
Model - IH6065DA Only

Model Number/ Upholstery Color	IH60 Rosewood	IH61 Blue Ridge	IH68 Jade
Kit Number	1126628-NLA	1126629-NLA	1126630-NLA

Upholstery Kits - IH6065 Series

Models 6065A, 6065DA, 6065PT & 6065WD

Upholstery Kits shown with Rosewood upholstery. See Charts for other Colors.



Upholstery Kits - IH6065 Series

Models 6065A, 6065DA, 6065PT & 6065WD

Item Number	Note	Part Number	Description	Quantity Per	
				Package	Assembly
1	A	See Chart	Back and Headrest Upholstery Kits	1	1
2	B	See Chart	Arm Rest Upholstery Kits	1	1
3	C	See Chart	Seats with Footrest Pad and Skirt Upholstery Kits	1	1
NOTE: A - Kit includes: Back, Headrest, (4) Hex Head Screws (M6 x 55) and (4) Angle Brackets. B - Kit includes: (2) Arm Rests and (8) Phillips Head Screws (M6 x 16). C - Kit includes: Seat with Foot Rest, Skirt and (8) Phillips Head Screws (M6 x 27).					

Upholstery Kits - IH6065 Series

Models 6065A, 6065DA, 6065PT & 6065WD

Chart 1 - Back and Headrest

Color	IH6065A	IH6065DA	IH6065PT	IH6065WD
IH60 - Rosewood	1126589	1126612-NLA	1126636-NLA	1126652-NLA
IH61 - Blue Ridge	1126590	1126613	1126637-NLA	1126653
IH68 - Jade	1126591-NLA	1126614	1126638-NLA	1126654-NLA

Chart 2 - Arm Rest

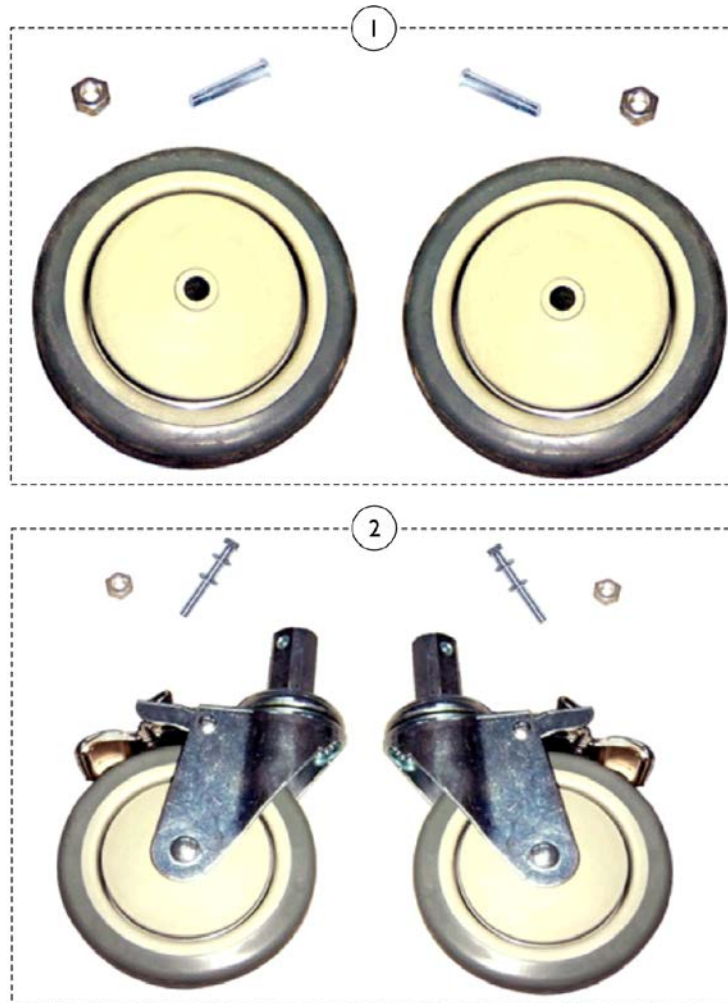
Color	IH6065A, IH6065DA, IH6065PT, IH6065WD
IH60 - Rosewood	1126581
IH61 - Blue Ridge	1126582
IH68 - Jade	1126583

Chart 3 - Seat with Footrest Pad and Skirt

Color	IH6065A	IH6065DA	IH6065PT	IH6065WD
IH60 - Rosewood	1126597	1126620-NLA	1126644-NLA	1126660
IH61 - Blue Ridge	1126598	1126621-NLA	1126645-NLA	1126661
IH68 - Jade	1126599	1126622-NLA	1126646-NLA	1126662

Caster Kits - IH6074 Series

Models 6074A

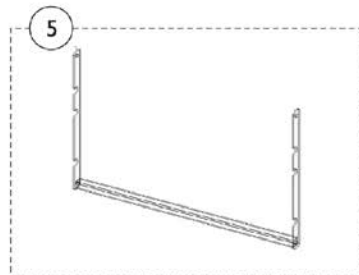
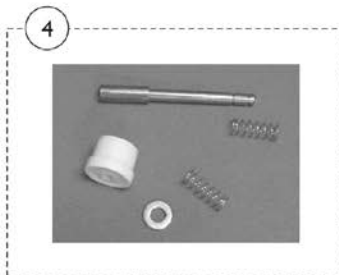


Item Number	Note	Part Number	Description	Quantity Per	
				Package	Assembly
1	A	1126605	Kit, Casters - Front	1	1
2	B	1126606	Kit, Casters - Rear	1	1

NOTE: A - Kit includes: (2) Casters, (2) Pan Head Stem Bolts (10M x 16) and (2) Nylock Nuts (10mm).
 B - Kit includes: (2) Locking Casters, (2) Hex Head Stem Bolts (M6 x 43), (4) Washers (6mm) and (2) Hex Nuts (6mm).

Mechanical Hardware Kits - IH6074 Series

Models 6074A



Mechanical Hardware Kits - IH6074 Series Models 6074A

Item Number	Note	Part Number	Description	Quantity Per	
				Package	Assembly
1	A	1126608	Bar, Push, Back	1	1
2	B	1126609	Reclining Mechanism Assembly w/ Hardware	1	1
3	C	1126607	Kit, Hardware	1	1
4	D	1163840	Pin, Plunger w/ Hardware	1	1
5		1163960	Ratchet Assembly, Grey - 6065A, 6074A	1	1
NOTE: A - Includes (2) Hex Head Screws (M6 x 55). B - Kit includes: (2) Reclining Mechanisms, (2) Finger Guards, (8) Phillips Head Screws (M6 x 40) and (8) Hex Nuts (6mm). C - Kit includes: (2) Phillips Head Screws (M6 x 35) with (2) Washers (6mm) and (2) Hex Head Bolts (M6.35 x 50) with (2) Washers (6.35mm). D - Kit includes Plunger Pin (1), Plunger Cap (1), Spring (2) and Washer (1).					

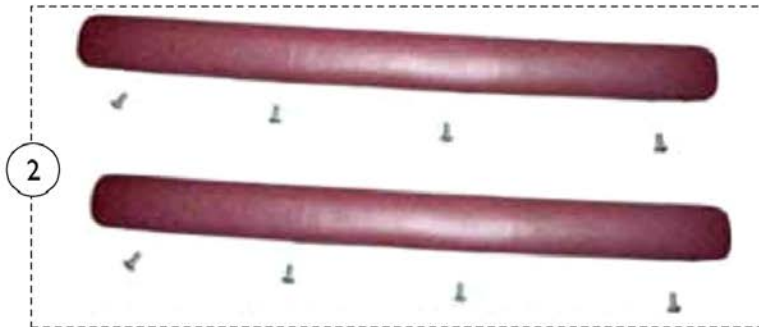
Tray and Side Panel Kits - IH6074 Series Models 6074A

Item Number	Note	Part Number	Description	Quantity Per	
				Package	Assembly
1	A	1126692	Tray Assembly	1	1
2	B	1126611-NLA	NLA - Kit, Side Panels - Plastic (31.8" x 16.8")	1	1
			Panel, Side - Vacuum Formed - Right	1	1
			Panel, Side - Vacuum Formed - Left	1	1
2	B	1164310	Kit, Side Panels - Plastic (32.33" x 17.24")	1	1
			Panel, Side - Vacuum Formed - Right	1	1
			Panel, Side - Vacuum Formed - Left	1	1
3		1134780	Kit, Tray Maintenance	1	1

NOTE: A - Includes: Tray Assembly with (2) Mounting Tubes and (2) Phillips Head Screws (M6 x 34).
 B - To determine which part number to use, measure the outside dimension (length and width) to match part number to order.

Upholstery Kits - IH6074 Series

Models 6074A



Upholstery Kits - IH6074 Series Models 6074A

Item Number	Note	Part Number	Description	Quantity Per	
				Package	Assembly
1	A	See Chart	Back and Headrest Upholstery Kits	1	1
2	B	See Chart	Arm Rest Upholstery Kits	1	1
3	C	See Chart	Seat with Footrest Upholstery Kits	1	1
NOTE: A - Kit includes: Back, Headrest, (4) Hex Head Screws (M6 x 55) and (4) Angle Brackets. B - Kit includes: (2) Arm Rests and (8) Phillips Head Screws (M6 x 16). C - Kit includes: Seat with Foot Rest, Skirt and (8) Phillips Head Screws (M6 x 27).					

Upholstery Kits - IH6074 Series

Models 6074A

Chart 1 - Back and Headrest Upholstery Kits

Color	Kit Number
IH60 - Rosewood	1126676
IH61 - Blue Ridge	1126677
IH68 - Jade	1126678

Chart 2 - Arm Rest Upholstery Kits

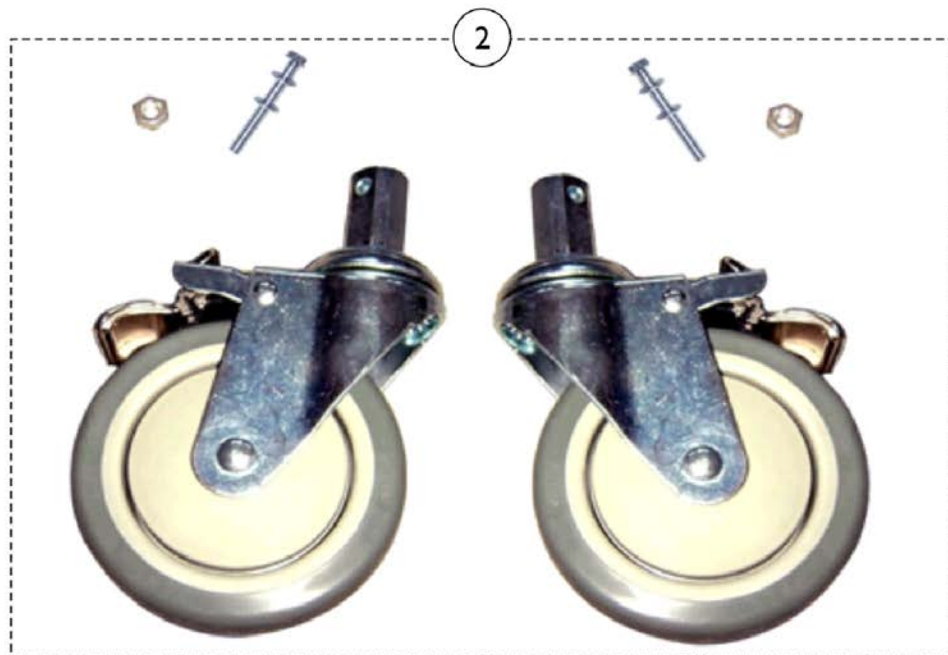
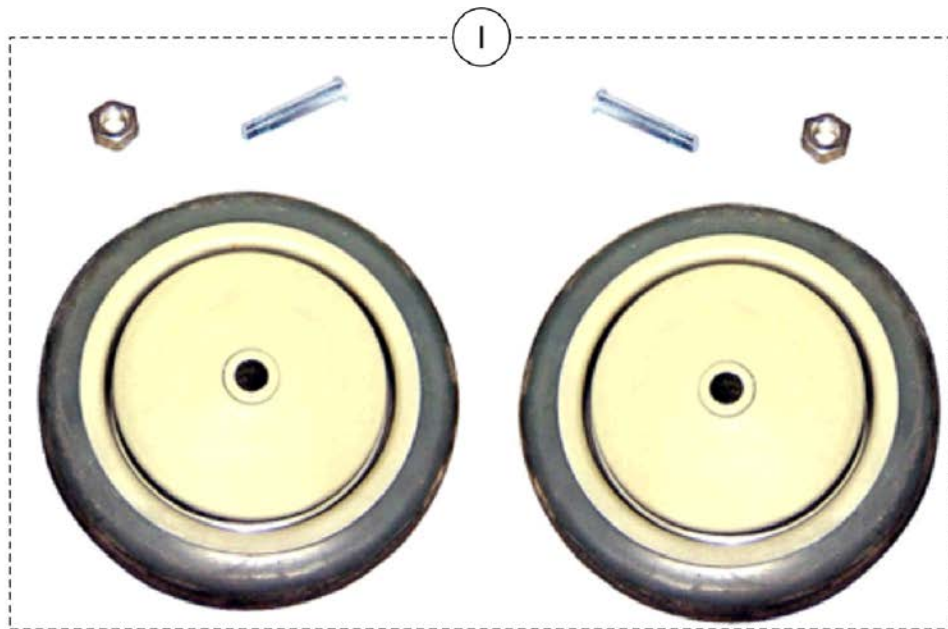
Color	Kit Number
IH60 - Rosewood	1126668
IH61 - Blue Ridge	1126669
IH68 - Jade	1126670

Chart 3 - Seat with Footrests Upholstery Kits

Color	Kit Number
IH60 - Rosewood	1126684
IH61 - Blue Ridge	1126685
IH68 - Jade	1126686-NLA

Caster Kits - IH6077 Series

Models 6077A



Caster Kits - IH6077 Series Models 6077A

Item Number	Note	Part Number	Description	Quantity Per	
				Package	Assembly
1	A	1126605	Kit, Casters - Front	1	1
2	B	1126606	Kit, Casters - Rear	1	1
NOTE: A - Kit includes: (2) Casters, (2) Pan Head Stem Bolts (10M x 16) and (2) Nylock Nuts (10mm). B - Kit includes: (2) Locking Casters, (2) Hex Head Stem Bolts (M6 x 43), (4) Washers (6mm) and (2) Hex Nuts (6mm).					

Tray and Side Panel Kits - IH6077 Series Models 6077A

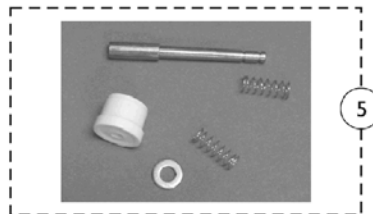
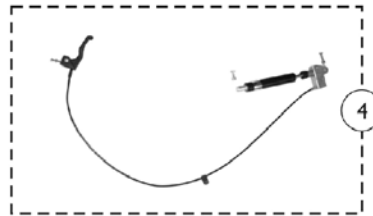
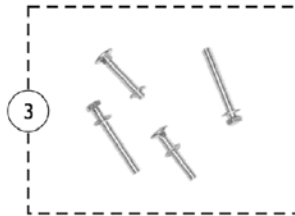
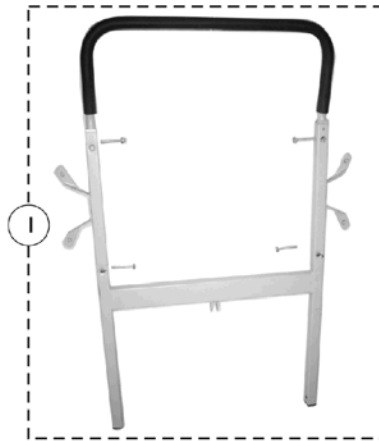


Tray and Side Panel Kits - IH6077 Series Models 6077A

Item Number	Note	Part Number	Description	Quantity Per	
				Package	Assembly
1	A,C,D	1126728	Kit, Side Panels - Plastic (32-1/2" x 18-1/4")	1	1
1	E,F	1165090	Kit, Side Panels, Right/Left (IH6077A)	1	1
			Panel, Side, Vacuum Formed - Right	1	1
			Panel, Side, Vacuum Formed - Left	1	1
2	B	1126727	Tray Assemblies with Mounting Tubes	1	1
3		1134780	Kit, Tray Maintenance	1	1
<p>NOTE: A - Kit includes: (2) Side Panels. B - Kit includes: (2) Tray Assemblies with Mounting Tubes. C - To determine which part number to use, measure the outside dimension (length and width) to match part number to order. D - Used on Recliner Models built before October 2008. E - Used on Recliner Models built after October 2008. F - Kit includes Left and Right Side Panels.</p>					

Mechanical Hardware Kits - IH6077 Series

Models 6077A



Mechanical Hardware Kits - IH6077 Series Models 6077A

Item Number	Note	Part Number	Description	Quantity Per	
				Package	Assembly
1	A	1126730	Bar, Push, Back	1	1
2	B	1126729	Kit, Recliner Mechanism with Finger Guards	1	1
3	C	1126607	Kit, Hardware	1	1
4	D,H	1126731	Kit, Gas Spring w/ Handle	1	1
	E	1163960	Ratchet Assembly, Grey - 6065A, 6074A	1	1
5	G	1163840	Pin, Plunger w/ Hardware	1	1

NOTE: A - Includes: Push Bar with Screws and Back.
 B - Kit includes: (2) Recliner Mechanism with Finger Guards.
 C - Kit includes: (2) Phillips Head Screws (M6 x 35), (2) Washers (6mm), (2) Hex Head Bolts (M6.35 x 50) and (2) Washers (6.35mm).
 D - Kit includes: Gas Spring with Handle, Cable Bracket and Lock Pin.
 E - Not Shown.
 G - Kit includes Plunger Pin (1), Plunger Cap (1), Spring (2) and Washer (1).
 H - Part is no longer available for recliners built before 12/1/08. For use on recliners built after 11/30/08 only.

Upholstery Kits - IH6077 Series

Models 6077A



Upholstery Kits - IH6077 Series Models 6077A

Item Number	Note	Part Number	Description	Quantity Per	
				Package	Assembly
1	A	See Chart	Back and Headrest Upholstery Kits	1	1
2	B	See Chart	Arm Rest Upholstery Kits	1	1
3	C	See Chart	Seat with Footrest Upholstery Kits	1	1
4	D	See Chart	Wing Pad Kits	1	1
NOTE: A - Kit includes: Back, Headrest, (4) Hex Head Screws (M6 x 55) and (4) Angle Brackets. B - Kit includes: (2) Arm Rests and (8) Phillips Head Screws (M6 x 16). C - Kit includes: Seat with Foot Rest, Skirt and (8) Phillips Head Screws (M6 x 27). D - Kit includes: (2) Wing Pads with Backs and (4) Phillips Head Screws (M6 x 27).					

Upholstery Kits - IH6077 Series

Models 6077A

Chart 1 - Back and Headrest Upholstery Kits

Upholstery Color	Kit Number
IH60 - Rosewood	1126701
IH61 - Blue Ridge	1126702
IH68 - Jade	1126703-NLA

Chart 2 - Arm Rest Upholstery Kits

Upholstery Color	Kit Number
IH60 - Rosewood	1126693
IH61 - Blue Ridge	1126694
IH68 - Jade	1126695

Upholstery Kits - IH6077 Series

Models 6077A

Chart 3 - Seat with Footrests Upholstery Kits

Upholstery Color	Kit Number
IH60 - Rosewood	1126709-NLA
IH61 - Blue Ridge	1126710
IH68 - Jade	1126711-NLA

Chart 4 - Wing Pads Upholstery Kits

Upholstery Color	Kit Number
IH60 - Rosewood	1126717
IH61 - Blue Ridge	1126718
IH68 - Jade	1126719

Invacare Corporation

www.invacare.com



Yes, you can.

One Invacare Way
Elyria, Oh USA
44036-2125
800-333-6900

Technical Support
800-832-4707
Customer Service
800-333-6900

Customer Service
800-333-6900

© 2014 Invacare Corporation, Elyria, Ohio.
All rights reserved. Trademarks are
identified by the symbols TM and ©. All
trademarks are owned by or licensed to
Invacare Corporation unless otherwise
noted. Information is subject to change
without notification.
(Revised 09/30/12)

Form No. 04-047