

## Table of contents

<b>Introduction</b>	<b>2</b>
<b>SVT Focus Specific Features</b>	<b>4</b>
<b>Engine/Transmission/Drivetrain</b>	<b>9</b>
<b>Chassis</b>	<b>11</b>
<b>Maintenance</b>	<b>14</b>
<b>A word about warranty coverage</b>	<b>16</b>

All rights reserved. Reproduction by any means, electronic or mechanical including photocopying, recording or by any information storage and retrieval system or translation in whole or part is not permitted without written authorization from Ford Motor Company. Ford may change the contents without notice and without incurring obligation.

Copyright © 2003 Ford Motor Company

## Introduction

### INTRODUCTION

Welcome to the Ford Special Vehicle Team family and thank you for purchasing the Ford SVT Focus. We trust that our tremendous dedication to the automotive enthusiast's total ownership experience will provide you with many miles of exhilarating, safe, and comfortable driving in your new SVT Focus.

SVT strives for balance between powertrain and chassis, cornering prowess and long-distance comfort, always working to build vehicles in which no one system overwhelms or overshadows any other. In the SVT Focus, that philosophy is carried forward through a sophisticated powertrain as well as significant interior, exterior, suspension, and braking system components.

This supplement complements your Focus Owner's Guide and provides information specific to SVT and the SVT Focus. By referring to the pages listed in this supplement, you can identify those features, recommendations, and specifications unique to your new SVT Focus.

If you have any questions, please call us at the Ford Special Vehicle Team hotline from 8:30 a.m. to 6:00 p.m. EST at 1-800-FORD-SVT (1-800-367-3788).

### SVT HISTORY

The Ford Special Vehicle Team (SVT) was established in 1991. SVT was commissioned to create factory-produced driver's vehicles; vehicles that possess a balance between engine and chassis, roadholding and a supple ride, refinement and performance capability. These qualities are the core of the SVT product development philosophy.

To support SVT, Ford Motor Company created a dedicated product development group, Ford Special Vehicle Engineering (SVE). In October 2001, Special Vehicle Engineering (SVE) was renamed Special Vehicle Team/Engineering (SVT/Engineering). The nucleus of Ford SVT is a small, cross-functional group of engineers, product planners, and marketing people who meet on a weekly basis to ensure SVT vehicles and their mission remain focused. SVT draws heavily on the talents and knowledge of other driving enthusiasts at Ford who work in the key disciplines of design, product development, manufacturing, and marketing. The heart of the SVT philosophy is a deep commitment to skillful and enthusiastic driving. The ultimate goal of everyone at SVT is to create vehicles that speak to the needs and desires of the knowledgeable driving enthusiast.

Every SVT vehicle produced has been designed and developed with four key virtues in mind: Performance, Substance, Exclusivity, and Value.

## Introduction

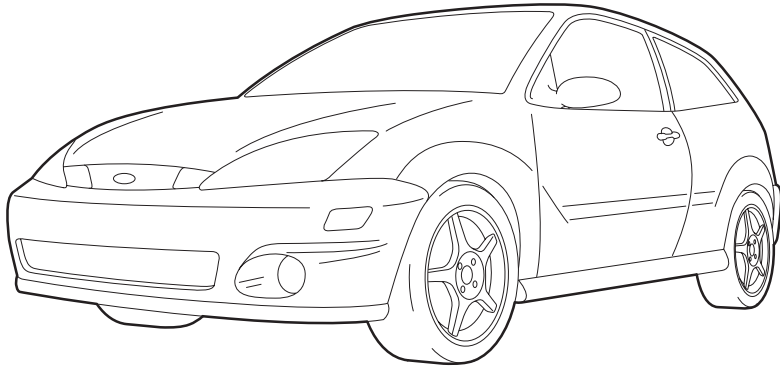
These hallmarks have driven the SVT Mustang Cobra since 1993, the original SVT Lightning from 1993 to 1995, the SVT Contour introduced in early 1997 as a 1998 model, and the 1999–2001 SVT F-150 Lightning and the 2002–2003 SVT Focus.

### SVT OWNERSHIP BENEFITS

- **SVT Focus Authorized Dealer:** A group of approximately 1,400 specially trained and certified SVT Focus dealers who are dedicated to a culture within their dealership that is friendly to the knowledgeable driving enthusiast.
- **SVT Premium Service:** Owners and lessees of 2004 model year SVT vehicles will be provided with a complimentary loaner vehicle when their 2004 SVT vehicle is in for service (includes warranty work and routine maintenance, other than oil changes). The dealership will also wash and vacuum the customer's vehicle, unless requested otherwise.
- **SVT Owner's Association One Year Membership:** The SVT Owner's Association is a club designed to enhance the experience of owning an SVT vehicle through events and learning activities, as well as the camaraderie of spending time with other SVT enthusiasts. Your new vehicle purchase or lease entitles you to a **free** one year membership.
- **Team Ford Racing One Year Membership:** Team Ford Racing provides inside access to news about Ford racing teams and drivers, exclusive race-day hospitality programs, access to test sessions and other benefits.
- **Certificate of Authenticity:** In recognition of your vehicle's exclusivity, the certificate documents your vehicle's date of production, vehicle identification number, final assembly plant and production sequence number. Certificates are printed 60 to 90 days after production is complete, and will be mailed to you automatically.
- **SVT Info Center:** Have a question or want information about your SVT vehicle, or any of our new products? Please call the SVT Info Center at 1-800-FORD-SVT. We'll handle your request or get you in touch with someone who can.
- **SVT Website:** The official SVT site, [www.svt.ford.com](http://www.svt.ford.com), will provide you with frequently updated information on products, events and many other areas of interest for SVT owners.
- **Official SVT Merchandise:** Let the world know you are an SVT fan, and look sharp at the same time. We have completely updated the SVT apparel lineup for 2004, with higher quality, brand name merchandise. Visit [www.fordcollection.com](http://www.fordcollection.com).

## SVT Focus Specific Features

### SVT FOCUS SPECIFIC FEATURES



- 2.0 L SVT Zetec engine with 170 horsepower
- Getrag<sup>™</sup> 6-speed transmission
- Unique rear spoiler
- Tuned tubular stainless steel exhaust manifold
- Unique mesh grilles and fog lamps built into the front fascia
- Unique rear hatch cargo net
- Aluminum gearshift knob with leather accent
- Leather park brake handle
- Audiophile audio system
- 17" wheels and 215/45R17 tires
- 300 mm vented front disc brakes/280 mm solid rear disc brakes
- Unique front and rear fascias
- Break away, power, heated body-color mirrors
- Black leather seats with blue or red cloth inserts

## SVT Focus Specific Features

### OPTIONS

- Audiophile audio system (6 disc, 8" subwoofer, front speakers)
- Cold weather package (traction control, heated front seats, engine block heater)
- European Appearance Package (EAP) (black leather seats with perforated black leather inserts, matching Recaro front seats, unique 'dark argent' multi-spoke wheels, audiophile audio system, cold weather package)

### EXTERIOR:

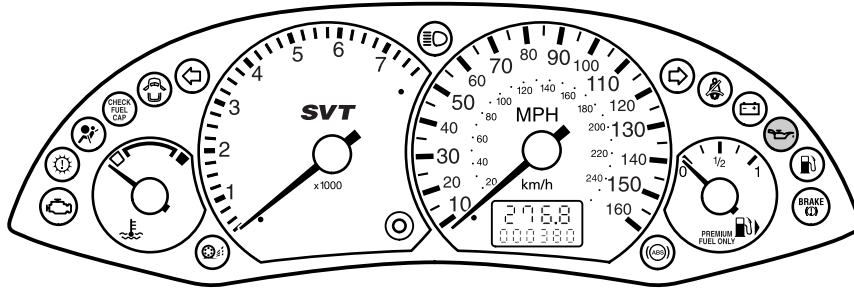
- Infra-Red, CD-Silver, Pitch Black, Sonic Blue, Competition Orange or Screaming Yellow (Competition Orange and Screaming Yellow available with EAP only).

### INTERIOR:

- Leather sport seats with blue cloth, red cloth or perforated black leather (available with EAP only) inserts
- Black leather Recaro front seats with perforated black leather inserts (available with EAP only)
- Unique black center stack
- Silver climate control bezels
- Aluminum gearshift knob with leather accent
- Leather park brake handle
- Floor mats
- Tip/fold 60/40 split rear seats with headrests

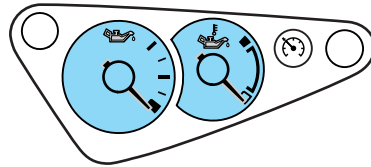
## SVT Focus Specific Features

### SVT INSTRUMENT CLUSTER

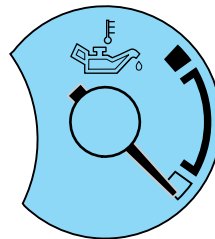


For information on the warning and indicator lights in the clusters, refer to the **Focus Owner's Guide**.

### SVT AUXILIARY INSTRUMENT CLUSTER

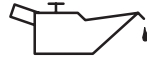


Indicates the temperature of the engine oil. At normal operating temperature, the needle remains within the normal area. If it enters the red section, the engine is overheating. Stop the vehicle as soon as safely possible, switch off the engine immediately and let the engine cool. Refer to *Engine oil* in the **Focus Owner's Guide**.



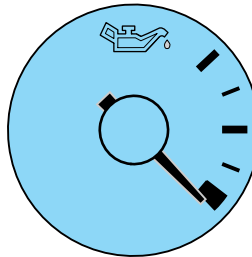
## SVT Focus Specific Features

This gauge indicates the temperature of the engine oil, not the oil level. If the oil pressure falls below the normal range due to low oil level, the engine oil pressure warning light in the main instrument cluster will illuminate. Stop the vehicle as soon as safely possible and switch off the engine immediately. Check the oil level and add oil if needed. Refer to *Engine oil* in the **Focus Owner's Guide**.



### OIL PRESSURE GAUGE

This gauge indicates engine oil pressure up to a recommended safe maximum value. During normal driving the indicated oil pressure will vary with engine speed, the pressure rising as engine speed rises and dropping as engine speed drops.



Driving with your oil pressure gauge pointer continuously at the top of the scale may damage the engine.

If the engine oil pressure drops below the normal range, the oil pressure gauge pointer will drop to the bottom of the gauge scale and the engine oil pressure warning light in the main instrument cluster will illuminate. Stop the vehicle as soon as safely possible and switch off the engine immediately. Check the oil level and add oil if needed. Refer to *Engine oil* in the **Focus Owner's Guide**.

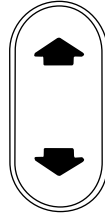


## SVT Focus Specific Features

### Driver's power seat adjustment

Press the upper portion of the rocker switch to raise the height of the seat.

Press the lower portion of the rocker switch to lower the height of the seat.



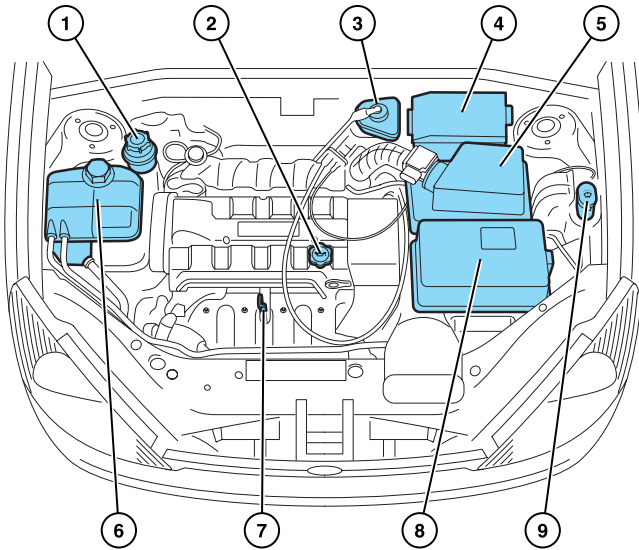
### Aiming the headlamps

The SVT Focus is equipped with VOL (HID) headlamps. For information on aiming the headlamps, refer to the **Focus Owner's Guide**.



## Engine/Transmission/Drivetrain

### 2.0L SVT ZETEC ENGINE



1. Power steering fluid reservoir
2. Engine oil filler cap
3. Brake/Clutch fluid reservoir
4. Power distribution box
5. Air filter assembly
6. Engine coolant reservoir
7. Engine oil dipstick
8. Battery
9. Windshield washer fluid reservoir

## Engine/Transmission/Drivetrain

### Engine Data

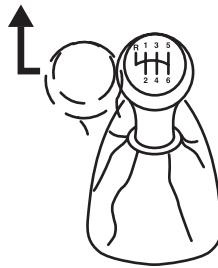
Engine	2.0L SVT Zetec engine
Cubic inches	121
Horsepower	170@7000
Torque	145 lb-ft @5500 rpm
Required fuel	91 octane
Firing order	1-3-4-2
Spark plug gap	1.3 mm (0.051 inch)
Ignition system	Electronic Ignition
Compression ratio	10:2:1

### 6-SPEED TRANSMISSION

#### Shift pattern

The shift pattern is shown opposite.

To select reverse gear, shift the lever into neutral position and then move the lever fully to the left-hand side of the gate against the spring pressure. Once the lever is fully to the left, push it forward into the reverse gear position.



#### Drivetrain

Item	Description		
Transaxle	Getrag <sup>®</sup> Twin layshaft 6-speed manual		
Gear Ratios	Gear	Overall ratio	Speed (mph)
	1st	12.7:1	15
	2nd	7.7:1	25
	3rd	5.7:1	35
	4th	4.6:1	45
	5th	3.8:1	55
	6th	3.1:1	60
	Reverse	12.0:1	—

## Chassis

### SUSPENSION

- Front suspension: MacPherson strut, retuned struts, 22 N/mm springs, 21 mm Stabilizer Bar
- Rear suspension: multilink, retuned shocks, 27.5 N/mm springs, 21 mm Stabilizer Bar

### STEERING

<b>Type</b>	Power assist, rack and pinion
<b>Turns, lock to lock</b>	2.6
<b>Turning diameter</b>	39.1

### BRAKES

- The braking on the SVT Focus provides improved performance and fade resistance to meet the demands of the driving enthusiast.
- Swept area is 18% larger on front rotors.

<b>Front</b>	300 mm (11.8 in.) vented disc, single-piston caliper
<b>Rear</b>	280 mm (11.0 in.) solid disc, single-piston caliper
<b>ABS</b>	Four-channel, four-sensor system

### TIRE INFORMATION

#### Important tire information

Your SVT vehicle is equipped with unique wheels and tires designed to enhance performance and appearance. To continue providing this performance, extra care must be taken when operating and maintaining your vehicle.

#### **Tires**

Your SVT vehicle is equipped with low profile, high performance tires that are designed to optimize handling, steering and braking to provide the performance you expect in a SVT vehicle. These tires are not optimized for off-road or winter performance, and their ride, noise and wear characteristics are different than other tires. Also, because of their lower profile, the tires are more susceptible to damage due to potholes and rough or unpaved roads. To ensure that your tires perform as designed, it is important that you maintain your tires properly:

- Always maintain your tire pressures according to the tire information placard in the doorjamb or inside the fuel filler door, using an accurate gauge.

## Chassis

- Tire pressures are specified “cold” and should be checked after the vehicle has been parked for at least 3 hours. Do not reduce pressure of warm tires.
- Check your tire pressure often to maintain it properly. Tire pressure can diminish over time and fluctuate with temperature.
- Do not overload your vehicle. Maximum vehicle and axle weights are listed on the tire information placard.
- Extra caution should be taken when operating the vehicle near its maximum load, including assuring proper tire pressure and reducing speeds.
- Extra caution should be taken when operating on rough roads to avoid impacts that could cause tire damage.
- In the event that you encounter an abnormally harsh impact, inspect your tires for damage.
- Inspect your tires for damage on a regular basis. If a tire is damaged, replace it immediately.
- Proper suspension alignment is critical for maximum performance and optimal tire wear. If you notice uneven tire wear, have your alignment checked.
- Rotate tires as recommended in your Owner’s Guide or SVT Owner’s Guide Supplement.
- When replacing tires, the only way to assure original performance is to use the original equipment tire. If a different tire is used, it should be the same size, speed rating and load rating.

### **Wheels**

Your SVT vehicle is equipped with unique wheels matched to the tires. These wheels are more susceptible to damage due to their diameter, width and low profile tires. To reduce the risk of damage to your wheels:

- Maintain proper tire pressure (see “Tires” previously listed).
- Extra caution should be taken when using automatic car washes. Although your vehicle is capable of being washed in an automatic car wash, equipment may vary and wheel damage is possible.
- When installing wheels, always torque lug nuts to specification with a torque wrench.
- Inspect your wheels for damage on a regular basis. If a wheel is damaged, replace it immediately.
- In the event that you encounter an abnormally harsh impact, inspect the outer diameter of your wheels, both inside and out, for damage

## Chassis

### ***Operating a performance vehicle at higher than normal speeds***

Your SVT vehicle is capable of operating at higher than normal speeds and is equipped with tires rated for the vehicles' maximum speed. However, it is important to remember to always drive safely, obey all traffic laws, and only operate your SVT vehicle at higher than normal speeds at locations and under conditions where such can be done safely. Also, before operating your vehicle at higher than normal speeds:

- Assure correct tire pressures (see "Tires" previously listed).
- Inspect wheels and tires for wear and damage. Replace any damaged wheels or tires.

### ***Winter driving***

The original equipment tires on your SVT vehicle are designed for maximum performance in dry and wet conditions. They are not designed for winter use on ice or snow and cannot be used with snow chains. If you will be operating your vehicle in these conditions, winter or all-season tires must be used. Contact the Ford SVT Hotline at 1-800-FORD-SVT for information on SVT recommended winter tires for your vehicle. When using winter or all-season tires:

- Always use winter tires on all 4 wheels and use 4 of the same size, brand and model.
- Be aware that winter or all-season tires will not perform as well as the original equipment tire in dry and wet conditions. Expect handling, steering and braking to be degraded.
- Do not use a winter tire with less than a "T" rating, and even with clear, dry driving conditions do not operate your vehicle above posted speed limits while using winter tires. Never perform high-speed driving with winter tires.

## Maintenance

### MOTORCRAFT PART NUMBERS

Component	2.0L SVT Zetec engine
Air filter	FA-1688
Battery	BXT-96R
Oil filter	FL-2005 W

### Refill capacities

Fluid	Ford Part Name	Capacity
Brake fluid	Motorcraft High Performance DOT 3 Motor Vehicle Brake Fluid	Fill to line on reservoir
Engine oil (includes filter change)	Motorcraft 5W30 Super Premium Motor Oil meeting Ford specification WSS-M2C205-A	4.25L (4.5 quarts)
Engine coolant *	Motorcraft Premium Gold Engine Coolant (yellow-colored)	5.75L (6.1 quarts)
Fuel tank	N/A	50L (13.2 gallons)
Power steering fluid	Motorcraft MERCON® ATF	Fill to line on reservoir 0.9L (0.95 quarts)
Transaxle fluid **	Motorcraft Full Synthetic Manual Transmission Fluid Motorcraft MERCON® V ATF	2.0L (2.1 quarts)
Windshield washer fluid	Motorcraft Premium Windshield Washer Concentrate	4.0L (4.2 quarts)

\* Add the coolant type originally equipped in your vehicle.

\*\* Service refill capacity is determined by filling the transmission to the bottom of the filler hole with the vehicle on a level surface

## Maintenance

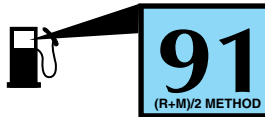
### Lubricant specifications

Item	Ford Part Name or Equivalent	Ford Part Number	Ford Specification
Engine oil	Motorcraft SAE 5W-30 Super Premium Motor Oil	XO-5W30-QSP	WSS-M2C205-A with API Certification Mark

For all other lubricant specifications, refer to the **Focus Owner's Guide**

### Octane recommendations

Your vehicle is designed to use "Premium" unleaded gasoline with an (R+M)/2 octane rating of 91 or higher. The use of gasoline with lower octane ratings may damage the engine. Gasoline labeled as "Premium" in high altitude areas that are sold with octane ratings of less than 91 are not recommended.



If your engine knocks under any driving conditions while you are using fuel with the recommended octane rating, see your dealer or a qualified service technician to prevent any engine damage.

### Synthetic fluids

There are no synthetic fluids or break-in fluids in your SVT Focus engine when it leaves the factory. Note that SVT does not make recommendations about the use of synthetic oils in your engine. should you decide to use synthetic engine oil, we recommend you allow 4,000 to 6,000 (6,500 km to 9,600 km) in order to assure complete break-in before switching to synthetic oil.

### Maintenance and break-in

For complete maintenance and break-in procedure information, please refer to your **Focus Owner's Guide**.

## **A word about warranty coverage**

### **A WORD ABOUT WARRANTY COVERAGE**

The SVT Focus carries the same warranty coverage as other Ford Focus models. This information is covered in its entirety in the Ford Motor Company Warranty Guide/Owner Information Guide.

The SVT Focus or any SVT vehicle can be serviced under warranty at any Ford-Lincoln-Mercury dealer nationwide.

SVT does not recommend modifying or racing your vehicles, as they are designed and built to be driven as delivered from the factory. The Ford Motor Company Warranty Guide/Owner Information Guide discusses the installation of aftermarket parts and their effect on warranty coverage as follows:

Repairs are not reimbursable under warranty when:

- “The repairs are required because of abuse, misuse, racing, fire, negligence, accident, modification or a natural disaster.”
- “The repairs are required due to installation of a non-Ford part.”