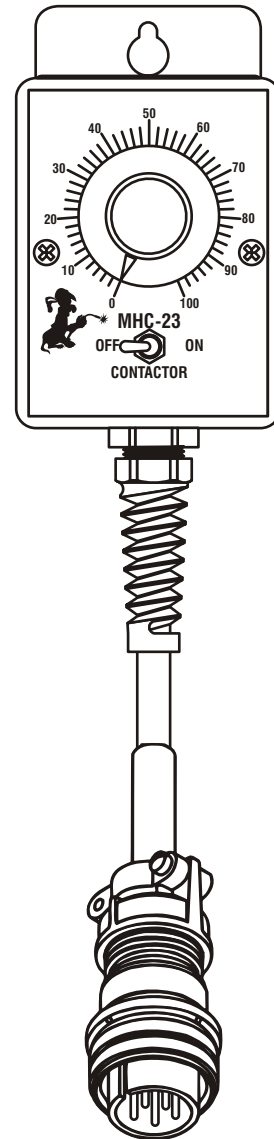
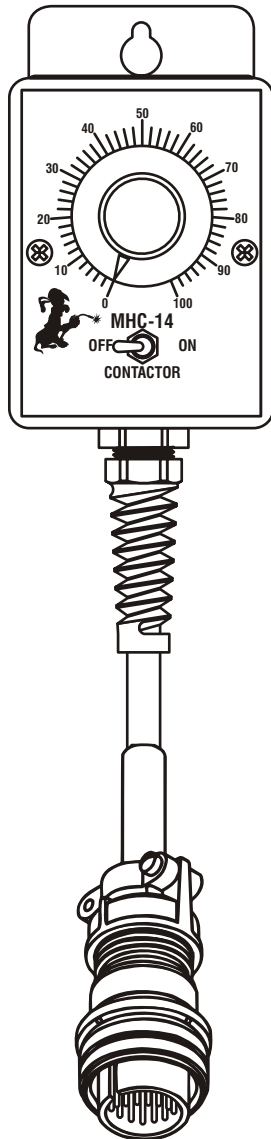




PROFAK[®]

Owner's Manual



MHC-14 & MHC-23 REMOTE AMPERAGE & VOLTAGE CONTROLS FOR MILLER[®] WELDING POWER SOURCES

Note: Please read and understand the entire contents of this manual, with direct attention on the safety material throughout this manual. This manual was intended for use by trained and qualified persons to install, operate and/or service this unit. **DO NOT** allow untrained personnel to install, operate or service this unit. Call your welding supply distributor if you do not fully understand these instructions.



SAFETY

WARNING! Read and understand all safety messages in this and the welding power source owner's manual.



ELECTRIC SHOCK can kill.

- Do not touch live electrical parts
- Keep all panels in place.
- Keep yourself insulated from the work



WELDING can cause fire and explosion.

- Do not weld on closed containers.
- Watch for fire



SMOKE, FUMES AND GASES can be hazardous to your health.

- Keep head away from fumes and smoke.
- Ventilate work area



ARC RAYS can burn eyes and skin.

- Wear correct body protection
- Wear welding helmet with filter.

WARRANTY

LIMITED WARRANTY - Subject to the terms and conditions hereof, **PROFAX**, Pearland, TX warrants its products to be free from defects in workmanship and material at the time of delivery by **PROFAX**.

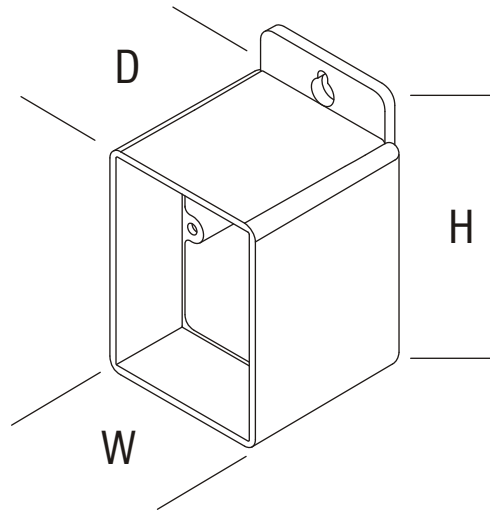
PROFAX will honor warranty claims on products as a result of failure from a defect for a time period as listed below for the particular product line, from date of sale to the original user.

Consumable products manufactured by PROFAX	30 Days
Resale consumable products.....	Original Manufacturer's Warranty
Mig Guns, Flux Cored Guns, Spool Guns.....	90 Days
Arc Gouging Torches, Plasma, Tig Torches & CO ₂ Heaters.....	90 Days
Remote Fingertip, Hand/Foot Controls.....	90 Days
Voltage Controls & Spool Guns.....	90 Days
Spool Gun Controls.....	1 Year
Welding Power Sources & Wire Feeders.....	3 Year
Shelf Life Before WARRANTY Starts	1 Year

Upon return of the merchandise at user's expense, **PROFAX** reserves the right to either repair or replace as necessary.

This is the only warranty either expressed or implied covering **PROFAX** products.

DIMENSIONS



HEIGHT 4.50 in. (114.30 mm)
WIDTH 2.80 in. (71.12 mm)
DEPTH 2.95 in. (74.93 mm)
WEIGHT 7 oz. (Box only)

INSTALLATION

WARNING! Electric Shock can kill.

- Do not touch live electrical parts.
- Shut off welding power source and disconnect all electrical power.
- Shut off engine before making electrical connections.
- Keep all panels securely in place.

CAUTION! Incorrect installation can damage unit.

- Double check installation instructions
1. Turn off welding power source or stop engine on welding generator.
 2. **AMPHENOL PLUG:**
 - Make connection by aligning keyway to mating receptacle on power source, inserting plug and tighten by threading collar clockwise onto receptacle.
 3. If the power source has a Contactor Switch - place it into the **STANDARD** or **PANEL** position.
 4. If the power source has a Current or Voltage control switch - place it in the **REMOTE** position.

MAINTENANCE

1. Turn off engine and/or disconnect all electrical power before performing maintenance.
2. **EVERYDAY:**
 - Turn control fully from 0 to 100 taking care not to force the control past it's stopping points.
3. **EVERY 3 MONTHS:**
 - Inspect repair and/or replace any cracked parts or frayed cords.
 - Replace any unreadable labels.

TROUBLESHOOTING

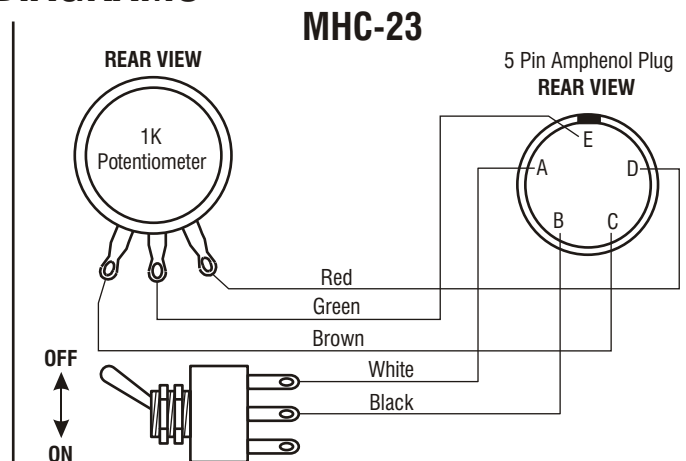
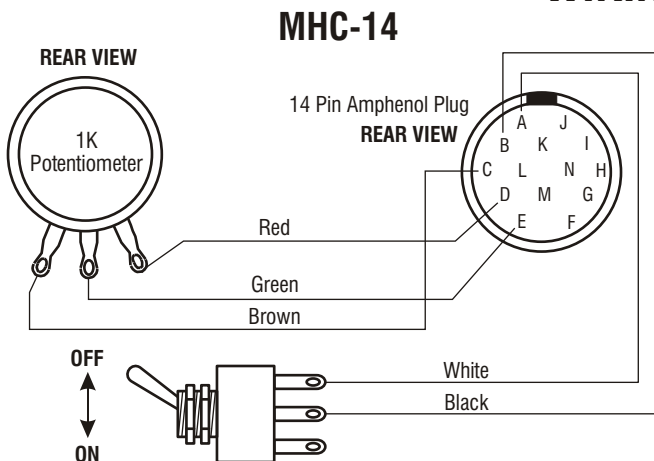
1. **NO AMPERAGE OR VOLTAGE CONTROL**
 - Check switches & controls on power source for proper position.
Remote Contactor Switch --- Standard position (contactor on)
Remote Current or Voltage Switch --- Remote position
 - Check plug on hand control to see if it is connected properly to receptacle on power source.
 - Check control, cord and plug for broken wires or parts.
2. **NO OUTPUT**
 - Check weld output on welding power source or generator.
(see power source owners manual)

REMOTE HAND CONTROL SELECTION GUIDE

MODEL	PART NO.	LENGTH	COMPATIBLE EQUIPMENT
MHC-23	MHC-23 MHC-23-25 MHC-23-50 MHC-23-100	No Cord 25ft. Cord 50ft. Cord 100ft. Cord	Used on MILLER® equipment that has the 5 pin remote control receptacle. 330ST AIRCRAFTER®, BIG 30 DIESEL®, BIG 30A DIESEL®, BIG 40G®, BIG 40 DIESEL®, BIG 50 DIESEL®, CS450 DELTAWELD® 450, 451, 650 & 651, DIMENSION® 400, GOLDSTAR® 300SS, 400SS, 500SS & 600SS, MAXSTAR® 150, SQUAREWAVE® 1000, SYNCROWAVE® 250, 300, 350 & 500
MHC-14	MHC-14 MHC-14-25 MHC-14-50 MHC-14-100	No Cord 25ft. Cord 50ft. Cord 100ft. Cord	Used on MILLER® equipment that has the 14 pin remote control receptacle. BIG 30A DIESEL®, BIG 40G®, BIG 40 DIESEL®, BIG 50 DIESEL®, BIG BLUE® 600D, CP/CC1500, DELTAWELD® 300, 302, 402, 451, 452, 602, 651, 652 & 852, DIMENSION® 302, 372, 400, 452, 562, 650, 652 & 812, GOLDSTAR® 300SS, 400SS, 500SS & 600SS, MK VI MAXSTAR® 91, 152 & 175, MAXTRON® 300 & 450, METRO® 250D & 300DXQ, MILLER AIRPAK®, SHOPMASTER® 300, SYNCROWAVE® 250, 351, 500 & 500P, TRAILBLAZER® 250G & 250D, XMT® 200, 300 & 304 AEROWAVE®, ALT 304, BIG BLUE® 302, 402, 502, BIG BLUE® TURBO, CST 250, CST400, DIMENSION® 1000, DYNASTY® 200SD, 200DX, 300SD & 300DX GOLDSTAR® 302, 452, 652, DELTA® FAB, INVISION® 354MP, 456MP, INVISION® 456P, LEGEND® 301G, MAXSTAR® 200SD, 200DX & 200STR, MILLER® DU-OP, PIPE PRO 304, PRO 350, SYNCROWAVE® 180SD, 250DX & 350 LX, TRAIL BLAZER® 301G & 301D, XMT 456

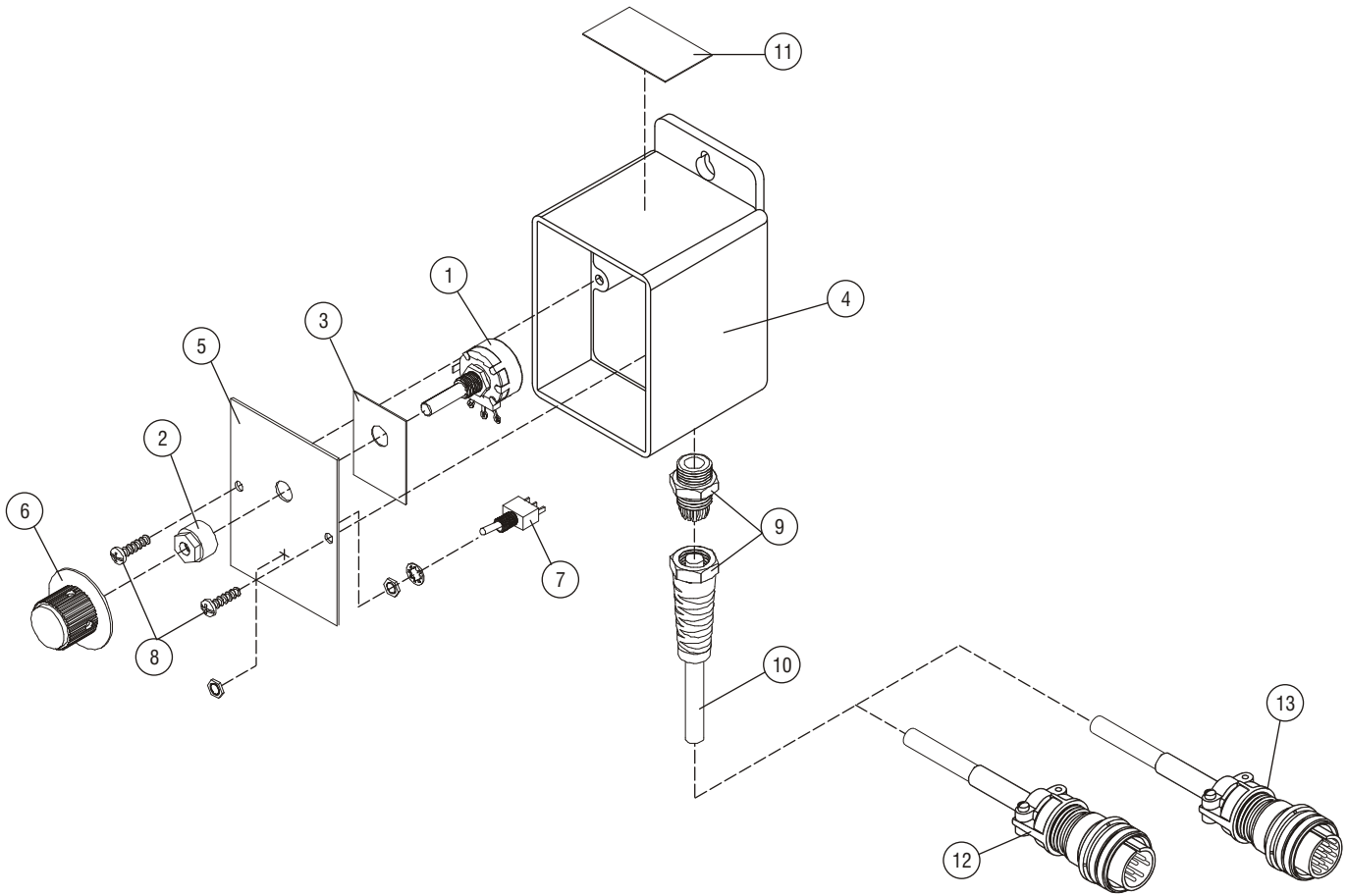
Miller® is the trademark of Miller Electric Mfg. Co.®

WIRING DIAGRAMS





ISOMETRIC EXPLODED PARTS VIEW & REPLACEMENT PARTS LIST



ITEM	PART NO.	DESCRIPTION	MHC-14	MHC-23
1	9813	Potentiometer - 1K - 1T - 2W	1	1
2	9327	Tension Nut	1	1
3	9029	Potentiometer Insulator	1	1
4	9812	Base	1	1
5	9825	Dial Plate		1
	9826	Dial Plate	1	
6	9814	Knob	1	1
7	9816	Contacting Switch	1	1
8	R185SC	Screw	2	2
9	9815	Strain Relief	1	1
10	9820	Cord - Size 18/5 (order by ft.)	1	1
11	9830	Label - CAUTION!	1	2
12	PX039273	Plug - 5 Pin		1
13	PX136961	Plug - 14 Pin	1	

**AVAILABLE THROUGH YOUR
WELDING SUPPLY DISTRIBUTOR**