

CES#1100- Waukesha F18GL

Ariel JGA/4 Compressor



General Configuration

Manufactured	: Enerflex 2004
Location	: Southern Alberta
Availability	: 1 Week for Disconnection
Service	: Sweet
Driver Model	: Waukesha F18GL
RPM	: 1800
HP Rating	: 400
Compressor Model	: Ariel JGA/4
Compressor Stage	: 3
Cooler	: Air-X-Changer Model 93AVI
Control Panel	: RC2000 PLC
CRN Registration	: AB

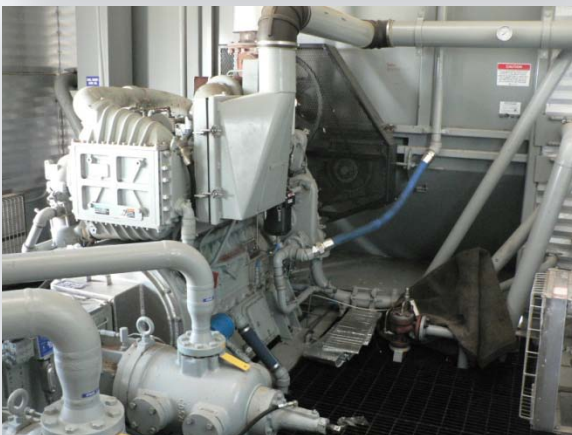
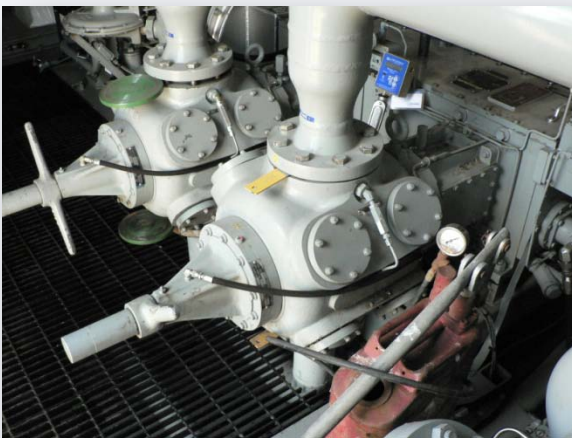
Stage Configuration

Stage / Throw	Cylinder Size	Cylinder Pressure	VVCP
Stage 1	7.5" (2 throws) JG	600psig	Yes
Stage 2	5.125" JG	865psig	Yes
Stage 3	3.375" JG	1320psig	Yes

Sample Performance

Suction Pressure: 170psig	Discharge Pressure: 950psig	3.2 MMSCFD @ 360HP
Suction Pressure: 30psig	Discharge Pressure: 950psig	1.4 MMSCFD @ 296HP

*To evaluate performance scenarios specific to your site conditions, please contact us.



Package Features

- Ariel Pro-Flo Lubrication Monitoring System
- Cooler Air-X-Changer Model 93AVI
 - IC1 – 645psig @ 350°F
 - IC2 – 1292psig @ 350°F
 - AC – 1315psig @ 300°F
- Inlet Separator: 24" OD x 72" S/S x 272psig c/w 10" x 8" 740psig Boot
- Fisher Inlet Controller (Mounted Outside of Building)
- Inter Stage Scrubber: 12" OD x 75" S/S x 727psig
- Skid/Building:
 - 31' Length x 14' Wide & 14' High
 - Catadyne Heaters
 - Lights
 - Net-Safety Gas Detection
 - Fire Loop
 - Super Critical Grade Muffler
- 1st stage, throw 2 is set up to blank/dummy the throw if needed.





Other Notes

- This package was manufactured in 2004 and brought in to supplement the existing compressor on site due to increased drilling. This unit ran for less than 2 years and was then shut down when the new wells tapered off and all gas could once again be handled by the main compressor.
- Fully Serviced by Toromont
- Drawings & Manuals Available
- Unit will be disconnected from all foundational, electrical, and piping connections
- Loading and Hauling by Purchaser