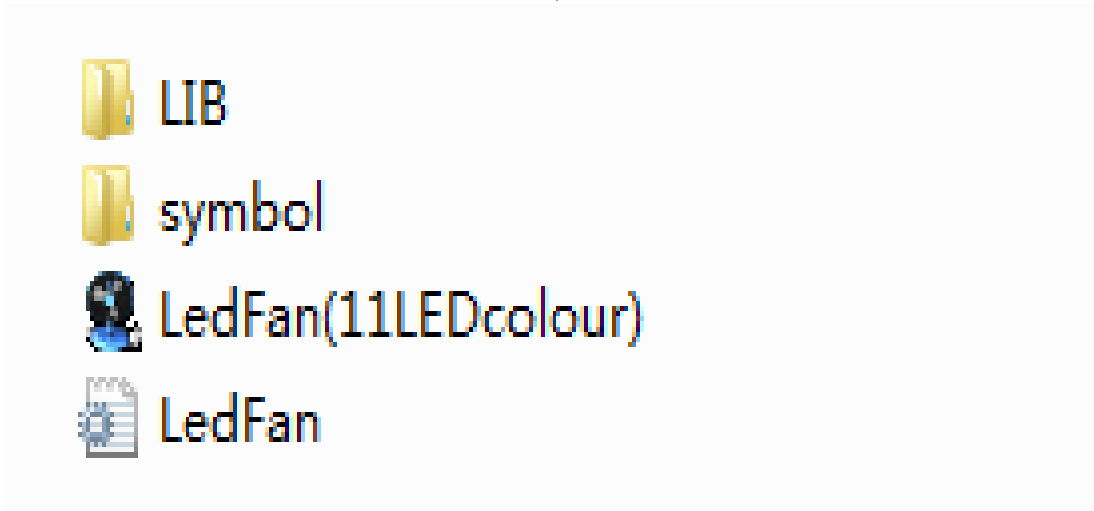



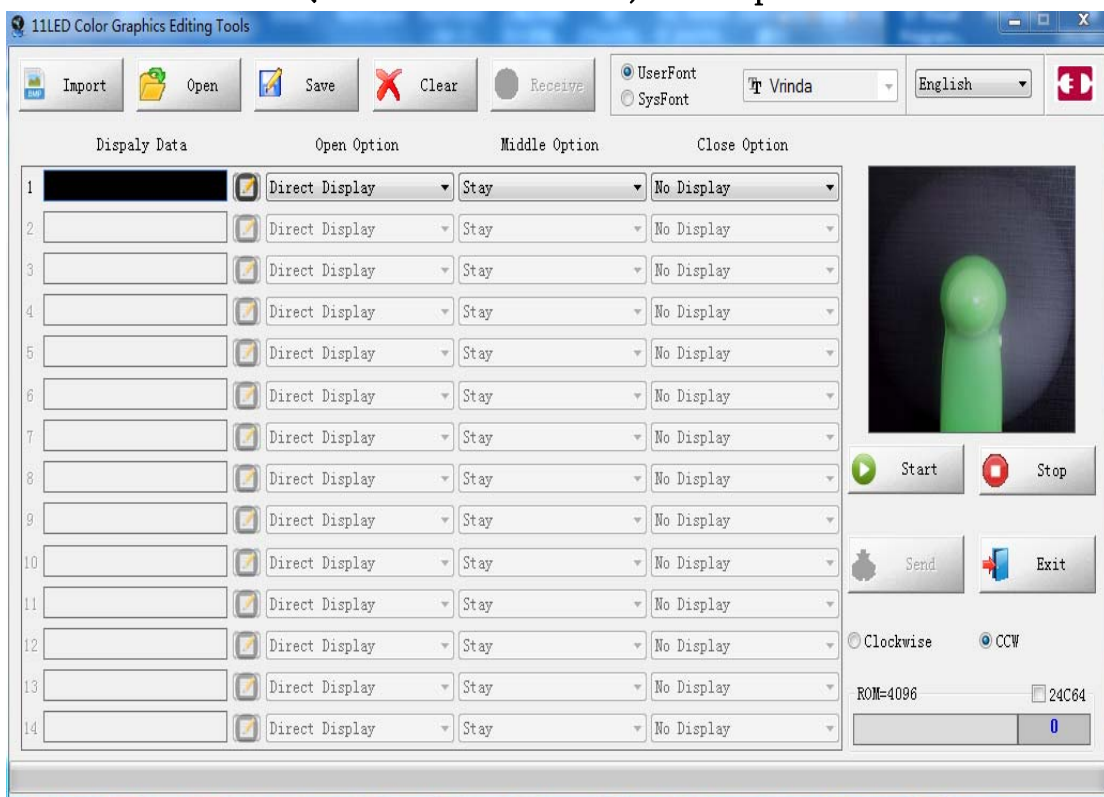
11LED color copying software instructions

Any software installation

Windows system open to use directly, after unzip the software

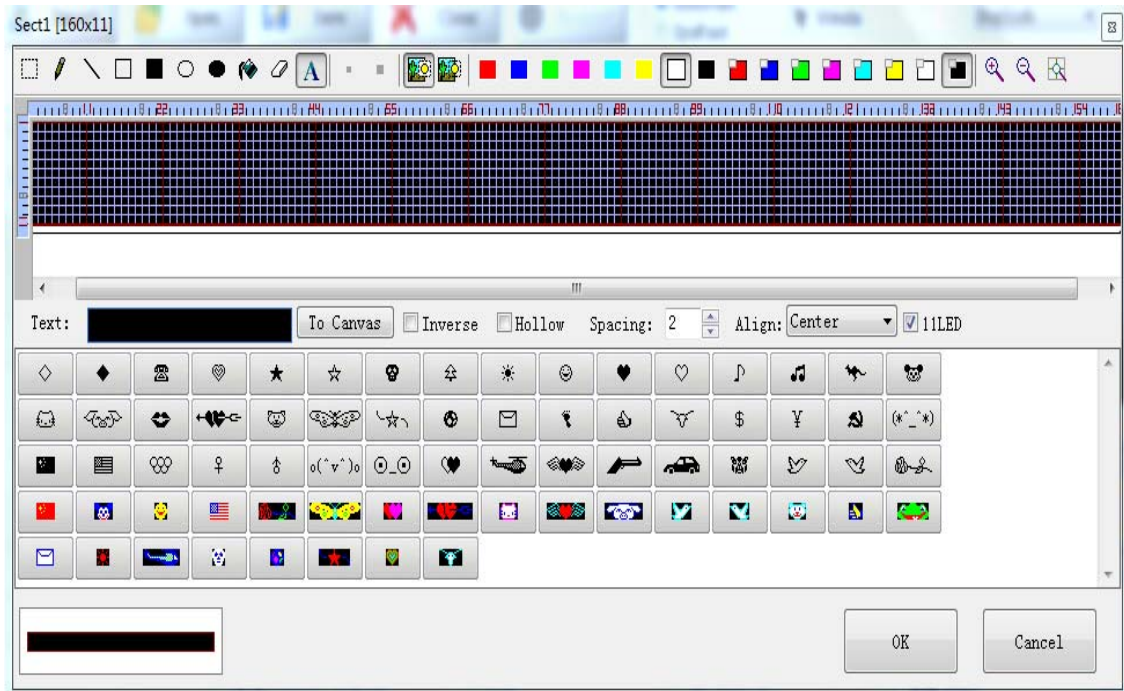


double-click ( LedFan(11LEDcolour)) to open the software

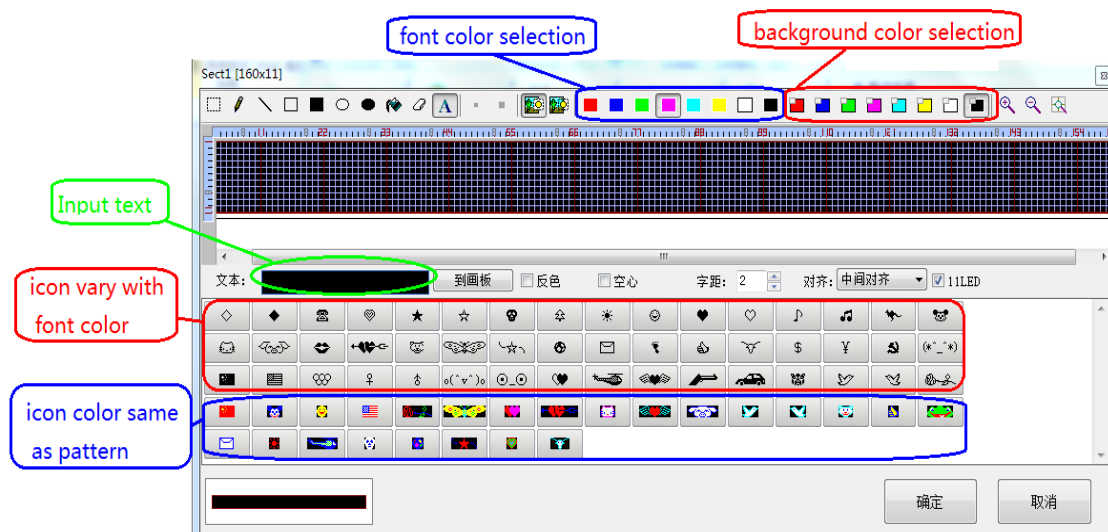


1. Operation:

Click “1  Direct Display” then appear as bellowed



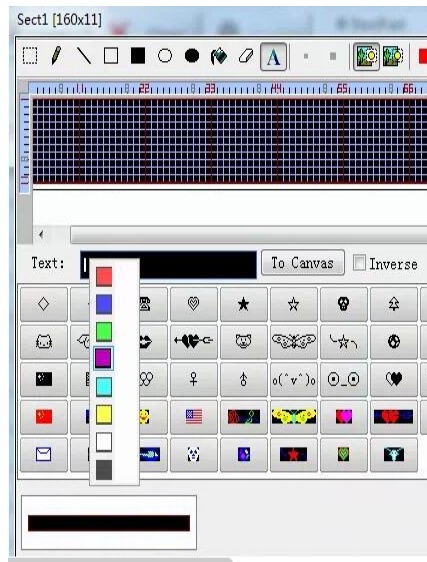
2. Interface function description as below:



3. you can use the keyboard to select the font color when enter the text Operation method as shown below:

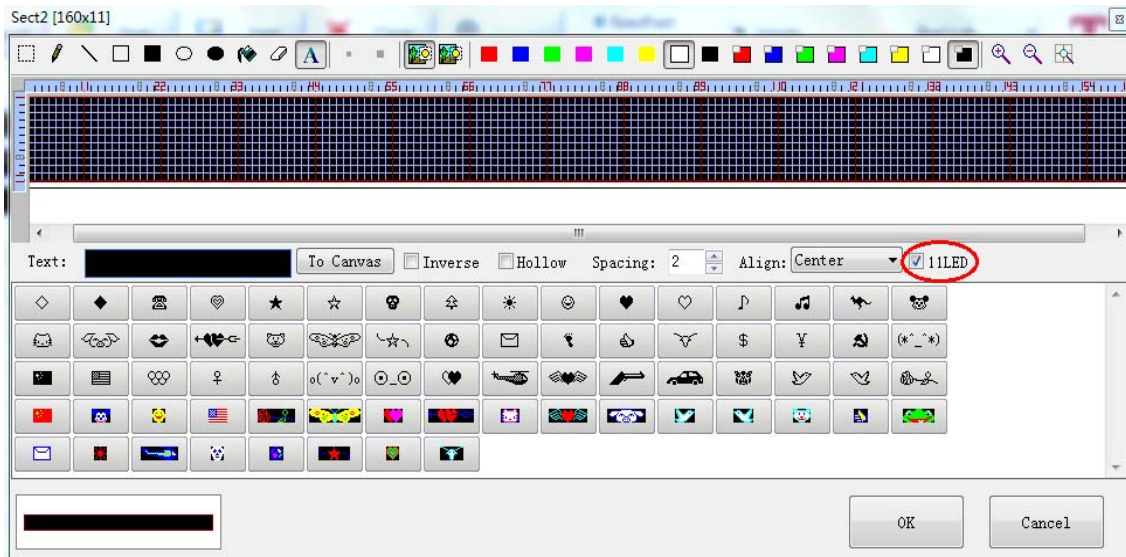



click the drop down



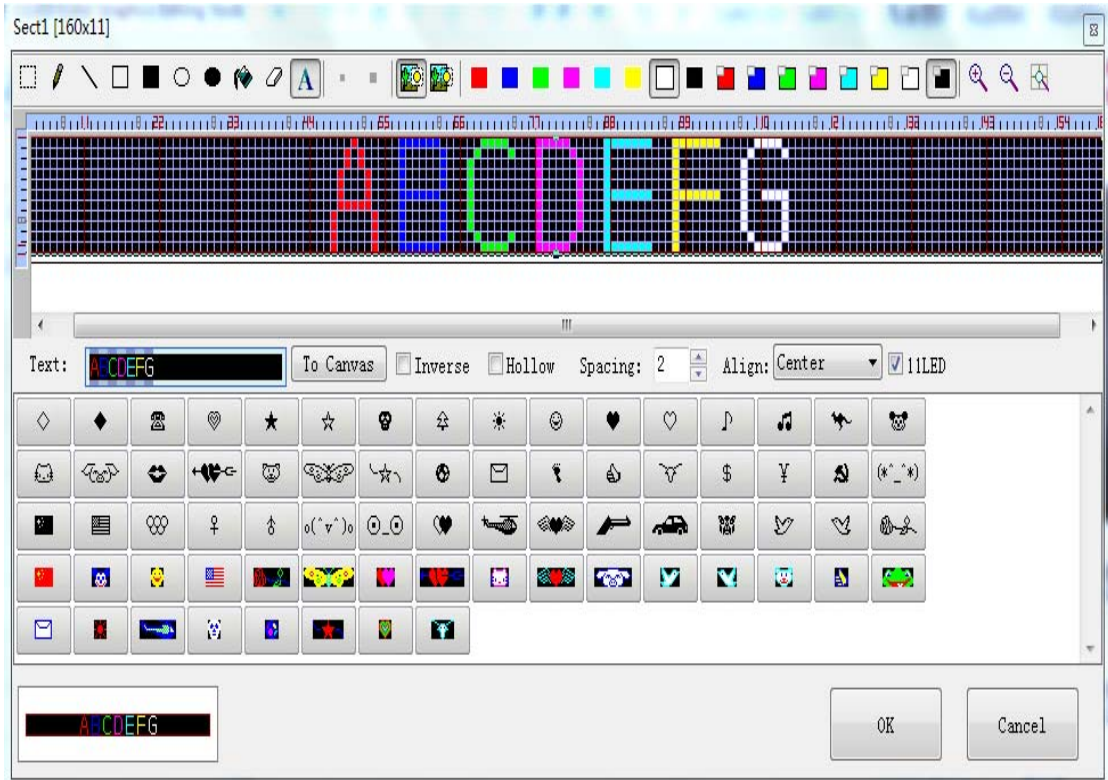
Show the color selection box, click the drop down to select the color, select the desired color and click Enter key

4. English font size selection:

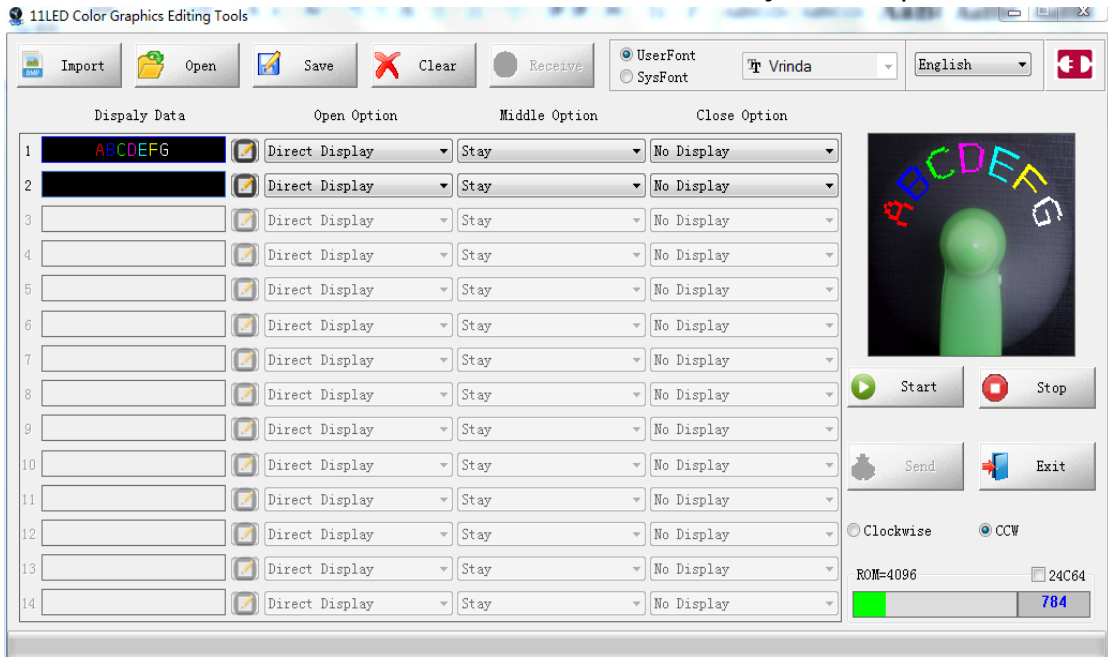


Here  is to select the font size (tick 11 LED height, not tick 9 LED height)

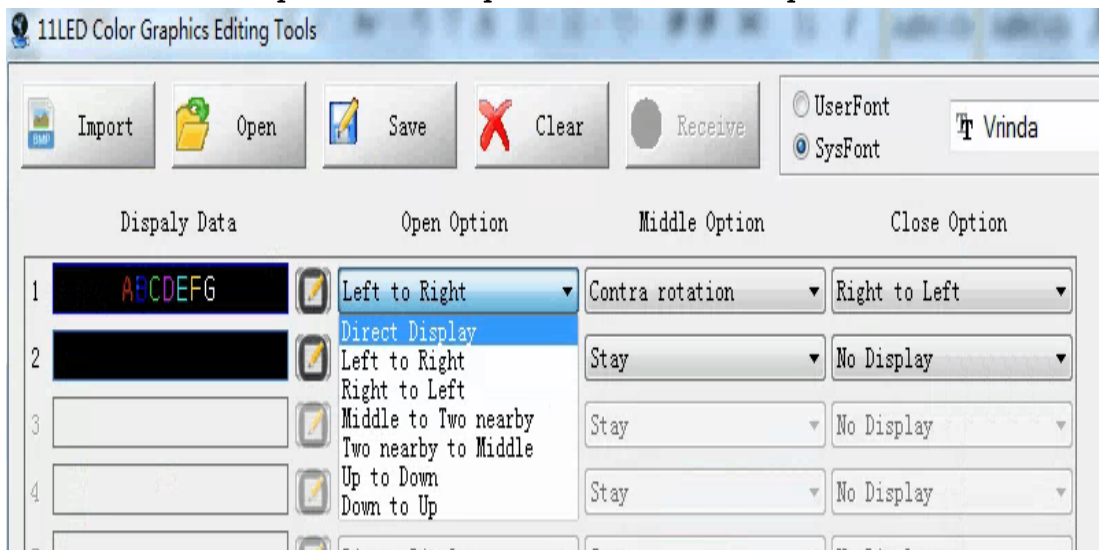
5. Input the word you want, eg. ABCDEFG or Company's Logo. As belowed:



6. Go back to main interface after create your required words.



7. Select the pattern required for each pattern:



Import: import 11*160 picture(bmp, jpg)

Open:open the saved design from the computer.

Save:save the operated design in the computer.

Reception:read the design through the USB

The software support multiple languages, choose the language you need.

Edit your required designs and words at the same,insert the USB,then click send, can send the designs and words to the products.

Tips:

1. Pay attention the link state after insert the USB
2. Pull out the USB after download.
3. If you have any question pls contact your dealer to solve.