

**3  
DAYS**

# AVIATION AUCTION

**3  
DAYS**

Auction is being conducted in conjunction with

## CENTURY SERVICES INC.

## ABSOLUTE AUCTION

**Friday, Saturday & Sunday  
July 11<sup>th</sup>, 12<sup>th</sup> & 13<sup>th</sup>, 2014**

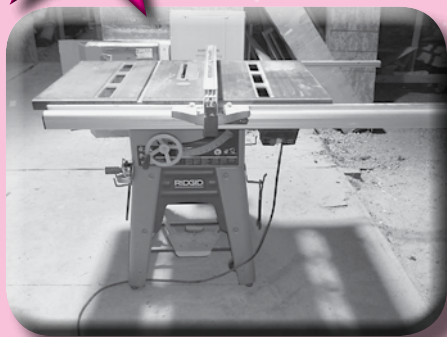
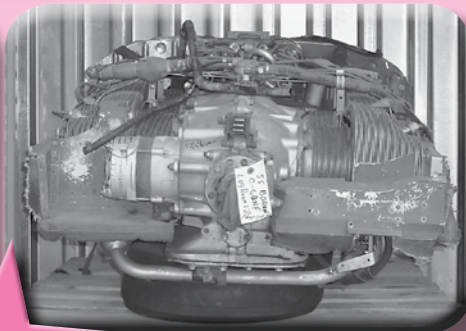
**Starting at 9:00 A.M. LOCAL TIME ALL THREE DAYS!**

**GLOBAL AIRCRAFT INDUSTRIES, LTD**

**80-27018 SH 633**

**Sturgeon County, AB ~ CANADA T8T0E3**

*On the Villeneuve Airport (CZVL) and Located Just to the Northwest Side of Edmonton Alberta, Canada*



**OPEN HOUSE: Friday ~ July 11th from 9:00 A.M. to 5:30 P.M.**

**SALE SITE PHONE: (780) 458-2801**

**AIRLINE CONNECTIONS:** Most major airlines service into Edmonton Int'l Airport. It is Approx. a 50-Minute Drive from Edmonton Int'l Airport. Private Aircraft Can Land at Villeneuve Airport (CZVL).

### HOTELS:

Best Western Plus the Inn  
At St. Albert  
460 St Albert Trail, St Albert,  
AB T8N 5J9  
(780) 470-3800

St. Albert Inn & Suites  
156 St Albert Trail, St Albert, AB  
T8N 0P5  
(780) 459-5551

Horizon Motel  
440 St Albert Trail, St Albert,  
AB T8N 5J9  
(780) 459-2965

Note: These Hotels are the closest to the auction site. There are several other Hotels listed in this vicinity and are available on our website.

**AUCTIONEER'S NOTE:** After 30-Years in the Aircraft Salvage Business, Abe Silverman is retiring and has contracted Starman Bros. Auctions, Inc. to sell ALL his Aircraft Inventory and Shop Equipment. This Sale will have a Large Selection of nice Control Surfaces and Wings along with a good mixture of Single and Twin Aircraft Inventory, Shop Equipment, Etc. 90% of this Inventory will be traceable.

For all U.S. Buyers, all of these parts will be U.S. Goods being returned. So there is no problem transporting them across the border. There will be names of Trucking Companies & Brokers available for your needs. There are NO SALES TAX due on any goods being exported out of Canada.

Everything sells "AS IS, WHERE IS" with no warranties implied or expressed. Neither the auctioneer nor owners shall be liable for any incorrect description, fault, or defect. Everything positively sells to the highest bidder. Payment must be made in full day of sale. No property removed until settled for. Auctioneer is not responsible for accidents or stolen property. All counts are approximate. Announcements made day of sale takes precedence over all printed material.

**PAYMENT TERMS:** Cash, Certified Funds, or Company Check ONLY if accompanied by Bank Letter of Guarantee!! NO EXCEPTIONS! Wire Transfers will be accepted with a 20% non-refundable deposit day of sale in one of the forms listed above. We also accept MasterCard and Visa with an additional 3% Buyers Premium applicable.

**PROXY BIDS:** If you are unable to attend this auction we will bid on your behalf. For more info visit our web site at [www.starmanauctions.com](http://www.starmanauctions.com) and click on Upcoming Auctions and scroll down to the Proxy Bid Section. Complete form and fax to (402) 592-2327 or call Steve at (402) 681-6456.

**LOADING & REMOVAL:** Once an item is sold the winning bidder is responsible for its removal. Any cost responsibility and risk of removal of purchases remain with the buyer. Removal may begin after payment in full and must be completed by the posted deadlines. NO EXCEPTIONS OR EXTENSIONS! There may be various trucking companies on site to arrange for transportation. However, it will be the buyer's responsibility to arrange their own trucking.

## STARMAN BROS. AUCTIONS INC.

1240 Royal Drive ~ Papillion, NE 68046  
(402) 592-1933

Check Out Our Web Site...  
[www.starmanauctions.com](http://www.starmanauctions.com)

PUBLICATION PRINTING • WATERLOO, NE 68069 • (402) 779-4696

PRSR FIRST CLASS  
U.S. POSTAGE  
**PAID**  
MAIL U.S.A.

**First Class**

# STARMAN BROS. AUCTIONS INC.

1240 Royal Drive • Papillion, NE 68046  
(402) 592-1933

[www.starmanauctions.com](http://www.starmanauctions.com)

Return Service Requested

## FORKLIFTS & TRAILERS



Mitsubishi FG25 Forklift, 5000 Lb Capacity, Propane



International 5614 Forklift, 4-Cyl Gas Engine, Manual Transmission  
18' Tandem Axle Car Trailer  
18' Tandem Axle Trailer w/Sides  
15' Single Axle Trailer w/Sides  
15' Single Axle Covered Trailer

## TRUCKS, CLASSIC CARS & GOLF CARTS

- 1956 Packard Clipper 4-Door, To Be Restored
- 1958 Edsel Villager 9-Passenger Wagon, To Be Restored
- 1942 Nash 4-Door Sedan, To Be Restored
- 1985 Dodge Power Ram 150, Automatic Trans, 4x4, Gas Engine
- 1999 GMC 6500 Recovery Truck, 10' Deck, Gun Poles, No Engine or Rear End
- (4) 2009 Club Car Electric Golf Carts

## LANDING GEAR

- PA46-310P Nose Gear Assy
- (2) PA46-310P Main Gear Assys
- (2) PA24-250 Nose Gear Strut Assy
- (3) PA24-250 MLG Assys
- Piper PA23-250 MLG Assy
- Beech A60 Nose Gear Assy
- A-36 Nose Gear Assy
- (6) Early & Late Style Bonanza NLG Assys
- C-172N Nose Gear Assy
- C-172 NLG Assy
- (3) C-337 Nose Gear Assys
- T-310R Nose Gear Assy, Damaged
- C-310R Nose Gear Assy
- C-310 MLG Assy
- C-150H Nose Gear Assy
- C-185 L/H Main Gear
- C-185 Tail Spring Tube
- (13) PA-31 Navajo MLG Assys
- Navajo NLG Trunnion P/N 40273-00, Repaired w/8130
- (7) Navajo Lower Gear Legs
- Navajo NLG Upper Trunnion
- Navajo MLG Upper Trunnions
- (3) Cherokee MLG Upper Trunnions
- PA-34 NLG Upper Trunnion
- Cherokee Nose Forks
- Cherokee Nose Gear Struts
- PA-32 Upper Trunnion
- Piper L/G Fork & Barrel Assys
- (9) PA-24 & 32 Upper MLG Trunnions
- (2) Late Mdl Baron & Bonanza MLG Assys
- (4) Musketeer MLG Assys
- (3) Sierra MLG Assys
- (3) Beech King Air 100 MLG Assy 115- Series
- (4) King Air MLG Upper Trunnion
- King Air Lower Gear Legs
- Beech L/G Barrels & Chromes
- Beech Lower Gear Legs & Trunnions
- B-55/76 & 60 Upper L/G Trunnions
- Aero Commander Nose & Main Gear Assys
- (3) Bonanza /Baron MLG Upper Trunnions
- Bonanza L/G Retract Braces
- Several King Air L/G Axle & Barrel Assys.
- (3) C-421B MLG Assys
- C-402 Fork & Tube Assy
- Several Cessna 300/400 Series Trunnions
- (2) C-340 MLG Assy & Trunnions
- C-300/400 Series Lower Gear Legs
- Caravan MLG, Damaged
- C-310 Upper Trunnions
- Bellanca MLG Assys
- Rockwell 681 MLG Assy
- Diamond DA20 Main & Nose Gear
- (2) Mooney Nose Gears
- Mooney MLG Assys
- MU-2 Shock Struts
- C-150 & 172 Tube Gears
- Cessna Gear Box Fittings
- C-210 Nose Trunnion
- Cessna 150/172/182 & 210 Nose Forks
- Cessna Nose Barrels & Chrome Tubes
- Various Cessna Tube Gears
- Pitts Main L/G
- (100+) Pieces of Spring Gear to Include C-150, C-172, C-170, C-140, C-188, C-210, C-182, C-206 & Grumman
- C-210 Main L/G Gear Boxes
- (4) King Air L/G Motors
- (6) Cessna 300/400 Series L/G Boxes
- King Air Gear Box Assy 115- Series
- Cessna 300/400 Series L/G Motors



- (2) Beech L/G Boxes
- Aerostar Trunnion
- Tail Wheel Forks
- L/G Squat Switches
- Bonanza/Baron MLG Braces
- Good Selection of Navajo & King Air L/G Drag Braces
- Good Selection of Cessna RG L/G Actuators
- Gear Door Actuators
- Piper L/G Actuators
- Landing Gear Inventory to Include Shimmy Dampners, Steering Bungees, Scissors, Emergency Pump Handles, Cessna & Piper Pivot Mounts, Cessna Right Gear Firewall Mount, Gear Box Fittings, Gear Box Gears & Inv., Steering Bellcranks, Axle Nuts, Springs, Tubes & Bearings, Sequence Valves, Gear Selector Valves, Etc.
- (21) L/G Power Paks
- L/G Retract & Steering Rods

## WHEEL, BRAKE & EXHAUST

- (70+) Wheel Assys to Include 5", 6" & 8", Cleveland, McCauley & Goodyear Brands, Also Includes Wheel Halves
- King Air Brake Assys
- (2) New Beaver Brake Calipers & Disc Assys
- Multi Disc Brake Assys
- Large Selection of Master Cylinders
- Brake Reservoirs
- Single & Multi Piston Brake Calipers
- Brake Discs
- Brake Backing Plates
- New 6.00-6 & 8.50-10 Tire Tubes
- Good Selection of Parking Brake Valves
- Good Selection of Mufflers & Exhaust Inv

## SHOP EQUIPMENT



- Millermatic 200 DC Arc Welding Power Source w/Mig Attachment
- Pneumatic Strut Pump
- Pedestal Anvil
- (2) Engine Hoists
- Engine Build Stand
- Garrett 331 Engine Sling
- Miller Roughneck Arc Welder/AC Generator, 12 HP Kohler Engine
- Miller Thunderbolt AC/DC Arc Welder
- Oxy/Acetylene Torch w/Cart
- OHause 1,600 LB Digital Platform Shipping Scale
- NCI 150 Lb Digital Shipping Scale



- Big Red Parts Washer
- Instapak Foam Packaging System
- Black & Decker 14" Metal Chop Saw
- 16-Speed Bench Top Drill Press
- 12-Ton H-Frame Press
- 20-Gallon Portable Air Compressor w/5-HP Briggs & Stratton Engine
- Simoniz Electric Power Washer
- Coleman 1500 Watt Portable Generator
- Automotive Engine Stand
- Banding Machine
- Schumacher 6/12/24 Volt Battery Charger
- Shop Built Cessna 100 Series Wing Jig
- BE 3" Water Transfer Pump, Gas Motor



- Rigid TS3650 10" Table Saw
- Rigid 12" Miter Saw
- Hangar Lights
- White 8-25 Snow Blower, 8-HP Gas Engine, Electric Start, Lights
- Hahn 26" Gas Powered Snow Blower
- Stihl FS55 Weedeater
- Homelite Weedeater
- Toro 5-HP Lawn Mower
- Weedeater Gas Powered Leaf Blower
- Pallet Jack
- 2-Wheel Dollies
- Bench Vices
- Several Extension & Step Ladders, Various Sizes
- Air Tanks
- Shop Lights

## TOOL BOXES & HAND TOOLS

- Craftsman 30-Drawer Roll-A-Round Tool Cabinet
- 12-Drawer Tool Box
- Wagner 404 Plus Electric Paint Sprayer
- Portable Propane Heater
- (2) Portable 220-Volt Electric Heaters
- (2) Eastern Differential Cylinder Pressure Testers
- Eastern Mag Synchronizer
- US Tools TP-102 Timing Indicator
- Good Selection of Cylinder Base Wrenches
- Beechcraft Wing Bolt Wrenches
- Pneumatic Impact Gun
- Pneumatic Drills & Rivet Hammer
- Pneumatic Sheet Metal Sheer
- Dial Indicator Magnet Base
- Central Dial Indicator Set
- Mdl 200 Rivnut Install Kit

- Snap-On Re-Threading Kit
- (2) Dremel Tools
- Black & Decker Hammer Drill
- Sawzall
- Pneumatic Box Stapler
- Saw Horses
- Gas Cans
- (2) Dolmar Hot Saws
- Timing Indicator
- Recovery Slings
- Large Selection of Tie Down Straps

- Good Selection of Air Hose & Extension Cords
- Hand Tools to include Allen Wrenches, Chisels, Craftsman Combination Wrenches, Socket Sets (Various Drive Sizes), Pop Rivet Guns, Pipe Wrenches, Ratchets, Drill Bits, Pliers, Snips, Wire Strippers, Tubing Cutter, Screwdrivers, Crescent Wrenches, Vice Grips, Hammers, Grease Guns, Lifting Eyes, Engine Tools, Hole Saws, Etc.

## WINGS



- (10) Piper PA24-250 Comanche Wings, Some w/Very Light Damage
- (2) C-182P Wings w/Control Surfaces, No Damage
- PA28-161 Wing
- C-207 R/H Wing
- (2) Cessna 207 Wings, Heavy Damage
- R/H Cessna 172 Wing, New Skins
- (21) Cessna 172 Wings
- (2) Cessna Long Range Wings
- (7) Cessna 182 Wings
- Cessna 170 Metal Wings
- (2) Cessna 170 Fabric Wings
- Cessna 208 Caravan Wing, Heavy Damage
- (5) Cessna 120 Fabric Wings
- (3) Cessna 180 Wings
- (4) Cessna 210 Wings
- (6) Cessna 150 Wings
- Cessna 188 Wings
- C-337 Wings
- Cirrus SR22-GTS Wing
- (2) Mooney 201 Wings w/Gear
- Mooney Cabin Section & Wing Assy
- Mooney Wing
- (2) Beech B-24R Sierra Wings
- (5) Bonanza Wings
- Cherokee Wing
- Musketeer Wing

- (2) PA-44 Wings
- Duchess Wings
- (33) Navajo Wings
- (9) PA-23 Wings, Some w/Gear
- Aztec Wings
- Travel Air Wing
- (6) Duke Wings
- (10) Baron Wings
- King Air 200 R/H Wing
- (3) King Air E90 Wings
- Beech 99 Wing
- (6) King Air Wings
- Queen Air Wing
- (5) C-421 Wings
- (5) C-401 & 402 Wings
- (2) C-414 Wings
- (18) C-310 Wings
- (9) C-320/340 Wings
- (2) Aero Commander Wings
- Islander Wing
- Bellanca Viking Wings, No Damage
- (20+) Cessna Wings for C-180, 188, 172, 210, 206, Etc w/Very Heavy Damage, Parts Only

*Note This is only a partial listing of the wings there are more counts to most wings that are listed.*



## WING TIPS & WHEEL PANTS



- (300+) Wing Tips for Cessna, Piper, Beech, Etc.

Navajo Winglets

- (100+) Wheel Pants, Mains & Nose for Various Aircraft

Good Selection of Control Surface Tips & Fairings

## CONTROL SURFACES



(800+) Control Surfaces, Most with Light to No Damage To Include  
Comanche Rudders  
Comanche Vertical Stabilizers  
Comanche Ailerons  
Comanche Flaps  
Comanche & Aztec Horizontal Stabilizers  
PA-46 Vertical Stabilizer  
PA-46 Rudder  
PA34-200T Horizontal Stabilizers  
PA34-200T Vertical Stabilizer  
PA32RT-300 Horizontal Stabilizer  
PA-44 Horizontal Stabilizer  
Navajo Rudders  
Navajo Ailerons  
Navajo Elevators

Navajo Flaps  
Several PA-31P Vertical Stabilizers  
Chieftain Control Surfaces  
PA-23 Vertical & Horizontal Stabilizers  
PA-23 Rudders  
PA-23 Elevators  
PA-28-161 Flaps  
Cherokee Ailerons  
PA-22 Aileron  
Cherokee Flaps  
Cherokee Vertical Stabilizers  
Piper Rudders  
Piper Horizontal Stabilizers  
Beaver Rudder  
Otter Rudder  
C-180 Vertical Stabilizers  
C-185 Elevators  
C-140 Elevators & Rudder

C-140 Horizontal Stabilizers  
C-140 & 170 Horizontal Stabilizers  
C-188 Rudders  
C-188 Flap  
C-206 Flap  
C-172/182 Rudders  
C-150/152 Rudders  
C-182 Vertical Stabilizers  
C-182 Elevators  
C-175 Elevator  
C-210 Vertical Stabilizer  
C-210 Horizontal Stabilizer  
C-421B Vertical Stabilizers  
Cessna 300/400 Series Rudders  
Cessna 300-Series Vertical Stabilizer  
C-310R Vertical Stabilizer  
C-300/400 Series Horizontal Stabilizers  
C-310 Ailerons  
C-300 & 400-Series Flaps  
C-310 STOL Flaps

C-172 Horizontal Stabilizers  
C-172 Vertical Stabilizers  
C-172 Elevators  
C-172S Elevator  
Cessna 172/182 Flaps  
Cessna 150/172 Ailerons  
C-172 Horizontal Stabilizers  
C-150 Horizontal Stabilizer w/ Elevators  
C-150/152 Flaps  
2007 Cessna 172 Control Surfaces  
King Air Rudders  
King Air Vertical Stabilizers  
King Air Flaps  
King Air Horizontal Stabilizers  
King Air Elevators  
King Air Horizontal Stabilizer Assys  
King Air Ailerons  
Baron Rudders  
Duke Control Surfaces

Baron & Bonanza Horizontal Stabilizers  
Bonanza & Baron Ailerons  
Bonanza & Baron Flaps  
Bonanza Elevators  
Travel Air Horizontal Stabilizers  
Travel Air Flaps  
King Air 100 Horizontal Stabilizer Assys  
T-34 Ailerons  
B-76 Rudders  
Musketeer Ailerons  
Musketeer Stabilizers  
Beech 18 Flaps & Ailerons  
C-337 Vertical & Horizontal Tail Boom Assy  
337 Tail Booms  
337 Aileron  
C-337 Rudders  
C-337 Tail Boom & Vertical Stabilizers  
C-337 Horizontal Stabilizers  
500S Rudder

MU-2 Vertical Stabilizer  
Misc MU-2 Control Surfaces  
MU-2 Vertical Stabilizers  
Grumman Control Surfaces  
Mooney Rudders  
Mooney Elevators  
Cirrus Ailerons & Elevators  
Cirrus Rudder  
Various Aero Commander Control Surfaces  
Diamond Flaps & Ailerons  
Diamond Rudder  
Bellanca Elevators & Ailerons  
Bellanca Horizontal Stabilizers  
Pitts Control Surfaces & Wing Strut  
B-24R Horizontal Stabilizer  
Bonanza Flaps  
(200+) Damaged Control Surfaces for Various Aircraft  
C-208 Flap

## LANDING GEAR DOORS



(200+) Main & Nose Gear Doors for Bonanza & Duke, Cessna 300-Series, Mooney, PA-46, Navajo, Cessna 400-Series, C-337, C-210, Baron, King Air, B-60, C-90, Twin Comanche, Comanche, PA-34, MU-2, PA-23, Aero Commander, DC-3, Etc.

## FUSELAGES



2007 C-182 Cabin Section, Very Heavy Damage  
1987 Cessna 208B Super Charger Master Caravan Fuselage  
Cessna 208 Grand Caravan Fuselage Section  
Cessna 182 Fuselages  
Cessna 185E Cabin Section, Very Heavy Damage  
(2) Cessna 120 Fuselages  
1948 Cessna 170 Fuselage  
2001 Cessna 172S Fuselage  
(8) Cessna 172 Fuselages  
Cessna 172XP Fuselage  
Several C-150 Fuselages, Various Years  
C-150 Aerobat Fuselage  
(2) Cessna 210 Fuselages  
1959 to 1963 Piper Comanche Fuselages  
1964 Piper Twin Comanche Fuselage  
1980 Piper PA28-161 Warrior Fuselage  
Piper PA28-160 Fuselage  
Piper PA28-180 Fuselage  
Piper PA28-140 Fuselages  
T-28 Salvage

1977 Piper PA34-300R Lance Fuselage  
1962 Piper PA22-150 Tri Pacer Fuselage  
1974 Citabria 7ECA Fuselage  
1975 Bellanca Super Viking Fuselage  
Beech E55, C55, D55 & A56TC Fuselages  
(10+) Navajo Fuselages 1968 thru 1979, Various Models, Some w/Crew Access Door Frames  
Beech Bonanza Fuselages  
Navajo Panther Fuselage  
1977 Beech C-24R Sierra Fuselage  
(4) 1972 to 1975 Piper Seneca I & II Fuselages  
Musketeer Fuselages  
(3) 1979 Piper Seminole Fuselages  
Piper PA32-260 Fuselage  
King Air Super E90 Fuselage  
(3) Piper Aztec Fuselages  
1969 & 1970 King Air 100 Fuselages  
1975 Piper Turbo Aztec E Fuselage

Several Other King Air Fuselages & Cabin Sections  
1977 Cessna 421C Fuselage  
(4) 1978 to 1980 Beech Duke Fuselages  
(3) Cessna 421 Fuselages  
1979 & 1980 Beech B76 Duchess Fuselages  
1979 Cessna 414 Fuselage  
Cessna 401 Fuselages  
1979 & 1981 Cessna 402 Fuselages  
Several Cessna 340 Fuselages  
Cessna 310R & 310Q Fuselages  
(5) Cessna 337 Fuselages, Various Years  
Aerostar 600 Fuselage  
MU-2 Fuselages  
Islander Fuselage  
Aero Commander 681 Fuselage  
Christian Eagle II Tail Section  
Navion Fuselage  
(4) Cessna 188 Fuselages  
(2) Air Tractor AT-301 Cabin Sections  
PZL M18A Fuselage

**NOTE: THE MAJORITY OF THE FUSELAGES LISTED HAVE BILLS OF SALE AND LOGS. THIS IS ONLY A PARTIAL LISTING OF THE FUSELAGES AND MORE WILL BE AVAILABLE SALE DAY**

## TRIM TABS

Trim Tabs for C-172, C-170, C-421C, MU-2, C-337, Various Models of King Air, Navajo, Twin Bonanza, Merlin, Bonanza, Aero Commander, Baron, PA-42, Apache, C-210, DC-3, Seneca, CC-402, Cherokee, Etc

## CABIN & BAGGAGE DOORS

(200) Cabin Doors to Include Cessna 150, 172, 182, 310, 180, 188, 337, 152, 170B, 206, Piper PA-34, PA-24, PA-32, PA-23, PA-31, Cherokee, PA-30, PA-22, Travel Air, Bellanca, Bonanza, B-76, Citabria, Lance Air Musketeer, Baron, Robinson R-22, Etc.  
(2) Cirrus Cabin Doors  
(3) Navajo Crew Door Frames  
Navajo Crew Doors  
Air Stair, Escape & Cargo Doors for E-90, C-340, PA-32RT, PA-31, PA-46, King Air, Baron, PA-34, T-310, PA-23, B-60, C-206 & Cessna 400-Series  
Various Baggage Doors for Single Engine Aircraft  
Good Selection of Wing Locker & Nose Baggage Doors for Cessna & Piper Twins

## AIRFRAME INVENTORY

Airframe Inventory for Twin & Single Engine Aircraft to Include Strut Cuffs, Doublers, Ribs, Stingers, Bulkheads, Dorsal Fins, Wing Doubler Plates, Bellcranks, Inspection Panels, Braces, Tie Down Rings, Control Surface Bellcranks & Weights, Push/Pull Rods, Torque Tubes, Control Surface Tips, Baggage Door Hinges, Steps, Gust Locks, Springs, Pulleys, Sprockets, Chains, Trim Wheels, Clamps, Throttle Quadrant Handles & Knobs, Heater Vents, Fresh Air Vents, Lord Mounts, Fuel Selector Covers, Scat Hose, Glove Boxes, Air Boxes, Inlet Scoops, Door Bungees, Windshields Wipers, Silencers, Ducting, Lines, Flap Handles, Mirrors, Fire Extinguishers, Oxygen Bottles, Door Latches & Hinges, Wing Vent Windows, Aircraft Covers & Plugs, Throttle & Mixture Cables, Accumulators, Tach Cables, Battery Boxes, Door Latches, Etc.

(18+) Cessna 300-Series Flap Gear Boxes & Motors  
Navajo Flap Transmission Assys  
Several Cessna Flap Actuator Assys  
(12) Beech Flap Actuators  
(30+) Pitot Tubes  
Venturis  
Several De-Ice Valves  
De-Ice Boots  
Vac Filter & Valve Assys

Cessna, Piper & Beech Control Yokes  
Beech Rams Horn Control Yokes  
DA-20, Citabria, Pawnee, C-188 & Misc Control Sticks  
Good Selection of Fuel Selector Valves  
Fuel Shut-Off Valves  
Primers  
Large Selection of Fuel Transmitters  
Header Tanks

Good Selection of Trim Actuators  
New Push/Pull Rods P/N 7001668-063  
Windshields & Side Glass  
King Air Wing Leading Edges  
Ag Truck Wing Root Fairings  
Several Throttle & Mixture Quadrants  
Cirrus Parachutes

## SEATS & INTERIOR

Large Selection of Seats for R-22B, C-402B, C-310R, C-340, C-172K, C-172E, C-182P, C-172N, C-185, DA-20, C-320, C-185E, B-90, C-421B, Musketeer, Navajo, PA-32R-300, PA-31-350, Baron, Comanche, Tri-Pacer, C-337, Citabria, C-172L, C-172M, T-310R, PA-28-140, PA-44-180, Aztec, SR-22, C-182T, C-206H, Bonanza, A-23, C-182, R-44, PA-34-200T, Twin Comanche, PA-28-180, King Air, C-150, Duke, Etc., Some are Sets & Several are Articulating

(2) Piper Center Seats/Children Seats  
(3) C-421B Toilet/Auxiliary Seat  
King Air E90 Toilet  
(14) Card Tables  
King Air Couch

King Air E90 Aisle Seat  
King Air Cabinets  
Good Selection of Interior Cabinetry & Refreshment Centers for Various Aircraft  
Heated Beverage Dispenser

Divider Panels  
Headliners  
Center Consoles  
Seat Rail  
Good Selection of Seatbelts & Reels

Interior Inventory to Include Ball Vents, Headliners, Side Panels, Window Panels, Center Consoles, Door Pulls, Door Panels, Speaker Covers, Interior Lights, Arm Rests, Glare Shields, Defrost Ducts, Window Shades, Sun Visors, Head Rests, Knobs, Exit Signs, Throttle Quadrant Covers, Placards, Etc.

## FLOATS & SKI'S

(4) Wipline 3730 Damaged Amphibious Floats  
Wipline 3000 Damaged Amphibious Float Sections w/Gear  
Wipline 3000 Front Landing Gear Assy for C-182  
Wipline 3900 Float Tail Sections, Damaged  
Wipline 3450 Damaged Floats  
(12) Damaged Partial Floats  
Damaged Beaver Retractable MLG Skis C2-US-613  
Beaver & C-185 Tail Skis  
Several Float Water Rudders  
(9) Spreader Bars for Amphibious & Standard Floats  
(2) Sets of 180 Snow Skis w/Runway Gear  
L/G Ski Wheels



New Ski Tube  
Float Fins & Rudders

## FUEL TANKS & ENGINE MOUNTS

Fuel Tanks to Include C-337, C-120, C-172, DA-20, Piper Wing Tanks, C-185 Auxiliary Tank, DC-3, PA-31-350, C-170, C-150, C-172 Baggage Tanks, Bellanca, Etc.

(20) Cessna 300/400 Series Tip Tanks

(7) MU-2 Under Wing Tip Tanks

Several Fuel Bladders

Engine Mounts for Travel Air, C-185, Musketeer, Bellanca, Comanche, C-182, PA-22, PA-34-200, 7ECA, PA-32R-300, King Air 90, King Air 100, Duke, Baron TC, Etc.

## ROBINSON & BELL HELICOPTER INVENTORY



- 1995 Robinson R-44 Fuselage
- (3) Robinson R-22 Cabin Sections
- (2) Robinson Tail Booms
- R-44 Tail Rotor Gear Box & Hub Assy, Damaged Blades
- R-22 & R-44 Collective Motor Assys
- R-44 Cyclic Trim Motors
- R-22 & R-44 Jack Shafts
- Robinson R-44 Crossover Tube
- R-44 Stick Assy
- (4) R-22 & R-44 Instrument Consoles
- R-44 Bellcranks
- R-22 Blade Grips
- R-44 Snow Shoes
- (4) R-22 Tanks, Some Damaged
- R-22 Pulley Covers
- 206B Tail Rotor Gear Box 206-040-400-105, Damaged
- Bell 206B Actuators
- Misc Bell 206 Bellcranks & Fittings
- Bell 206 Cargo Hook Mount w/1,500 Lb Cargo Hook
- Onboard Systems Cargo Hook Mdl 528-010-04

## SPINNERS, LIFT STRUTS & MISC.

- 100+ 2 & 3-Blade Spinners
- Beaver Spinner w/Backing Plate & Mounts, Damaged
- Spinner Backing Plates for 2 & 3-Blade Props
- (60) Lift Struts for C-150, 172, 182, 337, PA-22, DHC-3, C-206, Etc.
- Strut Cuffs
- Good Selection of Cowl Flaps
- C-185 Air Box
- Tail Sections for C-180, C-172RG, C-210, C-172, Etc.
- Mooney Tail Section
- Various Tail Stingers
- Several King Air Engine Nacelle Sections, Various Models
- King Air Firewall/Bulkhead Assys
- (2) Merlin Nacelles, (1) w/Gear
- Good Selection of Rudder Peddle Assys
- Twin Otter Heater Duct
- Dornier L/G Fairings
- Large Selection of Fairings & Panels for Twins & Singles, Various
- Makes & Models
- Cheyenne Cargo Pods
- (4) Cold Water Suits
- Life Raft

## COWLING & NOSE CONES

- Good Selection of Top & Bottom Cowling to Include C-310, C-340, A-60, PA-31, E-90 King Air, C-90, B-60, B-76, Comanche, C-206/210, PA-23, C-337 Front & Rear, Baron, Musketeer, C-172, PA-32, C-182 & Various Other Models
- Cowling Nose Bowls for Cessna, Piper & Beech Twins & Single Engine Aircraft
- Good Selection of Cowl Panels for Various Twins & Singles
- Radoms & Nose Cones
- Several Cessna Damaged Bottom Cowls

## PROPELLERS & INVENTORY



- McCauley D3A32088 3-Blade Prop, No Damage
- McCauley 3AF32C75 3-Blade Prop, No Damage
- McCauley 3AF32C75-NR 3-Blade Prop, No Damage
- McCauley B3D32C412-C 3-Blade Damaged Prop
- Misc Prop Hubs
- Propeller Accumulators
- Propeller Brush Blocks

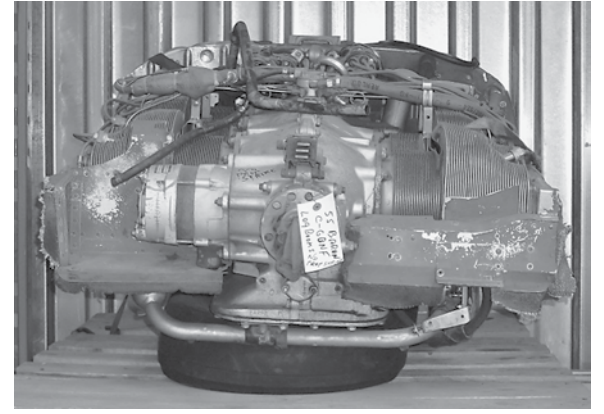
## ACCESSORIES

- (2) MA4-5 Carburetors
- (4) RSA-5 Fuel Injection Servos
- Continental Fuel Injection Throttle Bodies
- Several Continental Fuel Injection Controllers & Flow Dividers
- (7) Continental Fuel Injection Pumps
- (19) Bendix & Slick Magnetos
- (18) Starter Ring Gears
- (18) Tach Generators
- (3) Turbo Chargers
- (5) Turbo Charger Poppet Valves & Controllers
- (30+) Airborne, Weldon & Dukes Fuel Boost Pumps
- (13) Prop Governors
- (20+) Submergible Boost Pumps
- (50) Electric Fuel Pumps
- (60+) Oil Coolers & Intercoolers
- Baron Inter-Cooler Assys
- (12) Vac Pumps
- 13" Radial Engine Oil Cooler
- (10) Starters
- (4) Radial Engine Starters
- (8) Generators
- Misc Alternators
- Janitrol B3500 Heater
- (2) CD45K Aircraft Heaters
- Misc King Air & Southwind Heaters
- Janitrol Igniter Coils
- (44) Outflow Valves
- Slide & Shut-Off Valves of Various Makes
- Regulator & Solenoid Valves
- New Air Conditioner Install Kit
- Several Air Conditioner Pumps
- Air Conditioning Evaporators
- Lucas Starter/Generator 23032-027
- Starter Generator 150SG117Q
- (2) PT-6 Burner Cans
- (7) PT-6 Flow Paks

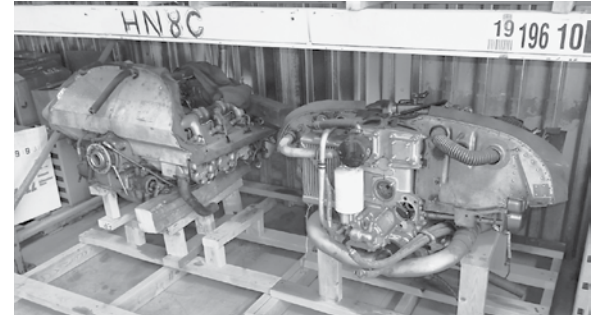
## CYLINDERS & ENGINE INVENTORY

- O/H TSIO-360 Cylinder
- (30) Continental 65/85 & 520 Cylinders
- Lycoming 235 Cylinders
- (7) Lycoming J2BD Cylinders
- O/H GTSIO-520 Prop Shaft
- Lycoming T10-541-E1C4 Crankshaft, 1,204 Hrs S.M.O.H.
- (3) Continental Sumps & Oil Pans
- Continental Accessory Cases
- (2) Lycoming Accessory Cases
- Misc Engine Gears, Lord Mounts, Rocker Box Covers, Mag Harnesses, Connecting Rods, Engine Legs, Lord Mounts, Dipsticks, Intake Tubes, Etc.

## ENGINES



Continental IO-520-C Engine, 1,731 Hrs. S.M.O.H., No Prop Strike, Has Logs



- Continental IO-360-G Engine w/Accessories, 1,225 Hrs. S.M.O.H., Normal Pull-off, No Prop Strike, Non Var Crank, Has Logs
- Continental IO-520BA Engine, 1,475 Hrs. S.M.O.H., Hole in Case, Has Logs
- Continental TSIO-520-AF Crash Damaged Engine
- Lycoming IO-320-B1A Crash Damaged Engine, 1,445 Hrs. S.M.O.H., Has Logs
- Lycoming IO-320-B1A Crash Damaged Engine w/Accessories, 1,445 Hrs. S.M.O.H., Has Logs
- PZL Mdl AS-621R118 Crash Damaged Radial Engine w/Prop
- Continental 7-Stud Engine Case w/Cylinders & Crankshaft

## ELECTRICAL & LIGHTING

- Large Selection of Electrical Inventory to Include Solenoids, Voltage Regulators, Over Voltage Relays, Windshield Temp Controllers, Toggle Switches, Circuit Breakers & Circuit Breaker Panels, Hamilton Standard Temp Controllers, Signal Conditioning Units, Power Supplies, DC Converters, Mag Switches, Fuse Holders, Rheostats, Terminal Blocks, Rocker Switches & Panels, Fans, Key Switches, Push Button Switches, Fire Detection Inv., Taxi Light Inv., Nav Lights & Bases, Landing Lights, Interior Lights, APU Plugs, Indicator Lights, Stall Horns, Resistors, Under Wing Lights, Micro Switches, Control Boxes, Carbon Pile Regulators, Reverse Current Relays, Lights, Beacons, Windshield Wiper Motors
- (50+) Strobe Power Supplies
- Good Selection of De-Ice Timers
- (6) Air Conditioning Motors
- King Air Flap Motor
- Cessna & Beech Flap Motors
- Trim Motors
- (70) Axial Float Misc Fans
- New Sealed Beam Lights
- Post Lights
- Propeller Synchronphaser Boxes
- Linear Actuators
- (30+) Static Inverters to Include P-20 & P-21, PC 14A, B & C, PC-15, 9910293, PC-50, PC-6B, King Air OECO SPS-306B-3, Etc.



## AVIONICS & INSTRUMENTS

- (2) King KX-155 Nav/Comm
- King KY-196 Comm
- King 165 Digital Nav/Comm
- King KX-170 Nav/Comms
- (2) Narco MK-12D Nav/Comm
- Collins Nav & Comms
- Several Cessna Nav/Comms & ADF's
- Good Selection of Older ADF's & Nav/Comms
- Narco 810 Comm
- (3) King KT-76 Transponder
- (3) King KT-76A Transponder
- (3) Garmin GPS 150XL
- Narco AT-50 Transponders
- GPS 196
- GPS 295
- King KLN-90B GPS
- Garmin GPS 155
- King 89B GPS
- Garmin GMA-1347 Audio Panel, Damaged



- Garmin GLD-49 Control Box
- Damaged Garmin GDU-1044B
- Damaged Garmin GDL69A
- Ryan ATS-8000 TCAD
- TCAD Processor
- Avidyne 700-00004-008 Multi-Function Display
- Avidyne 9900BX Processor
- (10) King KMA-20 Audio Panels
- MVP-50 Display Panel
- (3) King KA-134 Audio Panels
- King KMA-24 Audio Panel
- AMR-350 Audio Panel
- Several Misc Audio Panels
- King KNS-80 Nav Computer
- Honeywell C-14 Directional Gyro
- King KG-102A Directional Gyro
- General Design Gyro P/N 4305-150
- STEC-6444 Directional Gyro
- Several Other Directional Gyros
- Several Stormscope Processors & Indicators
- Primus 20 WXD
- WXR-300 Radar Indicators
- King KWX-56 Radar Indicator
- Apollo MX-20 Radar Indicator
- Several King & RCA Radar
- Antennas
- Narco 141 ADF
- Collins ADF 650
- Narco 841 ADF
- King KDM-705A DME
- Autopilot Control Panels
- Large Selection of Intercom Panels
- Good Selection of Digitizers & Encoders
- Several Collins & King DME Indicators
- King Voltage Converters
- Misc Lorans
- Good Selection of Flux Valves
- Annunciator Panels
- ELT's
- VHF-20 Transceivers
- VIR-30 Transceivers
- NAV Converters
- CHT & EGT Probes
- Radio Racks
- Microphones
- King KNC-667 Nav Computer
- King KTR-9100A Comm Transceivers
- Several Avionics Cooling Fans
- (30+) Altimeters
- (70+) Turn & Banks

- (500+) Instruments to Include Dual & Single Manifold Pressure, Gyro Suction, Flap indicators, Engine Oil Pressure & Temp, Pneumatic Pressure, Dual & Single Tachometers, Differential Pressure, Cabin Altimeters, Compasses, OAT Indicators, Oxygen, 3-N-1 Gauges, Cylinder Temp, EGT, Oil Pressure, Oil Temp, Inlet Temp, Air Speed & Knot Indicators, Vertical Speed & Climb, Fuel Flow, Fuel Pressure, Gallon Per Hour, Battery Temp, ITT, Hobbs Meters, Amp, Clocks, Etc.
- Baron C55 Panel w/Gauges
- Large Selection of Antennas
- Several Instrument Panels
- Several King, Collins, Arc & Misc Avionics Receivers, Controllers & Avionics Boxes
- (60+) Attitude Gyros
- (4) Flight Directors
- (100+) ADF & Course Indicators
- Several Collins Corporate Aircraft Course Indicators
- Shadin, Hoskins & JPI Fuel Computers
- Good Selection of Cluster Gauges
- Good Selection of Garmin, King, STEC & Edo Autopilot Servos

## RACKING & HARDWARE

- (100) Sections of 16' Pallet Racking, 36" to 53"
- (40) Sections of EZ Rect Bolt Together Shelving
- Assorted Wood Racks
- Numerous Shop Benches
- Prop Racks
- Wing Racks
- Hardware Kits to Include Electrical Connectors, Cap Plugs, O-Rings & Gaskets, Snap Rings, Rivets, AN Fittings
- Hardware Cabinet
- Wood Power Poles

## MANUALS & OFFICE EQUIPMENT

- (50+) Manuals to Include DHC-2 Beaver, DHC-3 Otter, Beech Duke, Cirrus, Aerostar, Grumman, Bell 206, Robinson R-22 & R-44, T-33, PT-6, Bell 47, Hiller, MU-2, Beech Baron, Lear Jet, Rockwell, Cessna 310
- Bell & Howell Microfiche Reader
- Microfiche Library
- 10' Conference Table w/Chairs
- High Back & Secretarial Chairs
- Side Chairs
- Office Desks & Cabinets
- Printers
- Various File Cabinets

# STARMAN BROS. AUCTIONS INC.

1240 Royal Drive ~ Papillion, NE 68046  
(402) 592-1933