

Dell PowerVault MD Series vCenter Plug-in for VMware vSphere Installation and Configuration Guide (Web Client)



Notes, cautions, and warnings

 **NOTE:** A NOTE indicates important information that helps you make better use of your computer.

 **CAUTION:** A CAUTION indicates either potential damage to hardware or loss of data and tells you how to avoid the problem.

 **WARNING:** A WARNING indicates a potential for property damage, personal injury, or death.

Copyright © 2015 Dell Inc. All rights reserved. This product is protected by U.S. and international copyright and intellectual property laws. Dell™ and the Dell logo are trademarks of Dell Inc. in the United States and/or other jurisdictions. All other marks and names mentioned herein may be trademarks of their respective companies.

2015 - 09

Rev. A01

Contents

1 Overview of the Modular Disk Storage Manager Plug-in for VMware vCenter Web Client.....	7
MD vCenter Plug-in features.....	8
Installation prerequisites.....	8
2 Installing the MD vCenter Plug-in for VMware vCenter web client.....	9
Downloading the MD vCenter Plug-in for VMware vCenter.....	9
Installing the application server.....	9
Upgrading from previous versions.....	9
Installing the MD vCenter Plug-in.....	10
3 Configuring the application server and plug-in	12
Configuring application server memory.....	12
Configuring storage administrator roles.....	13
Creating a role.....	13
Adding a user ID to a role.....	15
No access.....	16
MD vCenter Plug-in security.....	16
Mozilla firefox.....	17
Google Chrome.....	17
Microsoft Internet Explorer.....	18
Application server certificate management.....	19
Import signed application server certificate.....	19
Register vCenter server to application server.....	20
Import - export configuration file.....	20
Export.....	21
Import.....	21
Application server user management.....	21
4 Configuring VMware ESXi hosts.....	23
Configuring ALUA SUPPORT.....	23
Adding ALUA SATP claim rule.....	23
Configuring iSCSI storage.....	24
Additional information.....	25
Configuring SAS support on ESXi hosts.....	25
Upgrading the SAS SMI-S provider.....	25
Enabling root login from a console login on ESXi hosts.....	26
Creating a new user login.....	26

Installing the SAS provider upgrade of ESXi	26
Configuring ESXi hosts to Storage Arrays.....	26
Configure ESXi Host to Storage Array wizard.....	27
5 MD vCenter Plug-in manager.....	31
MD vCenter Plug-in features.....	31
6 Storage Arrays Objects view.....	33
Storage Arrays Objects view.....	33
Add Storage Array.....	34
Discover Storage Arrays.....	34
Collect Support Bundle.....	35
Edit Storage Array.....	36
Remove Storage Arrays.....	36
Saving the storage array configuration.....	37
Enabling automatic save configuration backups.....	38
Manually Save Configuration.....	38
View Event Log.....	39
7 Selected Storage Array Summary tab.....	40
Summary view general information.....	40
Recovery Guru information.....	41
8 Selected storage array Manage tab.....	43
Virtual Disks view features	43
Create Disk Group.....	44
Create Disk Pool.....	45
Create Virtual Disks.....	45
Legacy Snapshots.....	47
Redistribute Virtual Disk.....	48
Rename.....	49
Disable Data Assurance.....	49
Delete.....	49
Delete Multiple Virtual Disks.....	49
Mappings view features.....	50
Add Mapping.....	51
Rescan Storage Adapters.....	52
Add Host.....	53
Add Host Group.....	54
Rename.....	55
Remove.....	55
Virtual Disk Copy view features.....	55


Create Virtual Disk Copy.....	56
Stop Virtual Disk Copy.....	58
Recopy.....	58
Change Settings.....	58
Remove Copy Pair.....	59
Snapshots view features.....	59
Create Snapshot Group.....	60
Create Snapshot Image.....	61
Create Snapshot Virtual Disk.....	62
Delete.....	63
Remote Replication view features.....	64
Asynchronous remote replication (legacy) details.....	65
Create Replication Group.....	66
Create Asynchronous Remote Replication Pair.....	66
Suspend Replication.....	67
Resume Replication.....	68
Manual resync	68
Test Replication Communication.....	68
Change Roles.....	69
Delete Replication Group.....	70
Remote Replication Group.....	70
Remote Replication (Legacy) view features.....	70
Create Remote Replication (legacy).....	71
Suspend remote replication (legacy).....	72
Resume remote replication (legacy).....	72
Change Replication Settings.....	73
Change Replicated Roles.....	73
Test Replicated Communication.....	73
Remove Replicated Pairs.....	74
9 MD storage Manager Datastore Summary information.....	75
10 Best practices.....	77
Defining virtual disks for vsphere.....	77
Virtual disk decision-making schemes.....	77
Using the predictive scheme to make virtual disk decisions.....	77
Using the adaptive scheme to make virtual disk decisions.....	78
VMware ESXi host fibre channel configuration.....	78
11 Appendices.....	82
Current restrictions.....	82
ID: 200627833 – multiple item delete restricted to less than 80 objects.....	82

ID: 200702748 – ESXi host to storage array wizard usability issues.....	82
ID: 200716368 – vSphere 6.0 SAS datastore view.....	82
Configuration worksheet.....	82

Overview of the Modular Disk Storage Manager Plug-in for VMware vCenter Web Client

The Dell PowerVault Modular Disk Storage Array vCenter Plug-in (MD vCenter Plug-in) is a VMware vCenter Server Plug-in that provides integrated management of Dell MD Storage Arrays from in a VMware Web Client session. The Web Client is a single management interface that you can use to manage the VMware infrastructure and all of your day-to-day storage requirements. Instead of learning another management application, you can focus on the entire virtual infrastructure.

Unless otherwise noted, later references to "MD Storage Array vCenter Plug-in" or "MD vCenter Plug-in" in this document are used interchangeably to represent the MD VMware vCenter Plug-in.

 **NOTE:** The MD vCenter Plug-in is not a direct replacement for the MD Storage Manager software, which is still required for performing certain storage administration tasks.

The MD vCenter Plug-in enables you to perform the following tasks:

- Configure ESXi hosts to MD storage arrays.
- Create and delete virtual disks.
- Map virtual disks from the MD storage arrays to the ESXi host.
- View the vCenter Datastores available to MD Storage Arrays virtual disks.

You can create hardware snapshots, virtual disk copies, synchronous, and remote replication when these premium features are enabled on the storage array. The MD vCenter Plug-in uses an application server to facilitate the interface between the Web Client and the MD Storage arrays are based on the authenticated logged-in user and the privileges assigned to that user's role.

The MD vCenter Plug-in requires that a VMware vCenter server is installed in the environment. The MD vCenter Plug-in does not function in a configuration with only a Web Client and an ESXi host configuration.

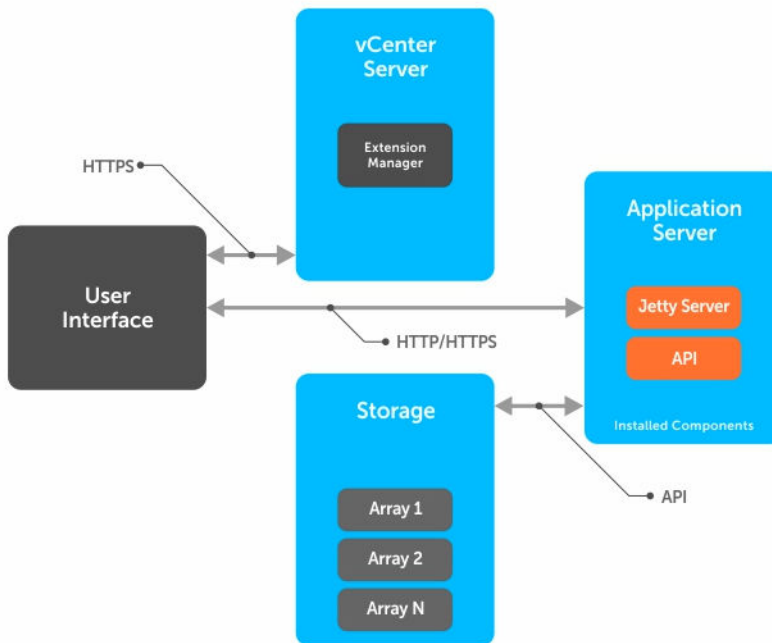


Figure 1. Communication details

MD vCenter Plug-in features

The following MD vCenter Plug-in features enable the integrated management of MD storage arrays:

- Storage array information
- Storage array organization
- Automatic and manual storage array configuration backup
- Storage provisioning and virtual disk mapping
- Copy services management
- Remote Replication (Legacy)
- Asynchronous Remove Replication
- Datastores to virtual disk details
- ESXi host configuration


Installation prerequisites

To install and use the MD vCenter Plug-in, see the latest *Support Matrix* available at Dell.com/support for information about the prerequisites.

Installing the MD vCenter Plug-in for VMware vCenter web client


Downloading the MD vCenter Plug-in for VMware vCenter

Download the latest version of the MD vCenter Plug-in from the Dell website. See the support matrix available at the Dell website for the most current web client versions. Copy the file to the host that you are going to use as an application server.

 **NOTE:** After downloading the Linux binary, add the execute attribute to the binary file to enable execution of the installer (`chmod +x vCenterInstaller-xx.xx.xxxx.xxxx.bin`).

Installing the application server


Install the application server on a different Windows server than the VMware vCenter Server is installed on.

 **NOTE:** When adequate resources are available on the VMware vCenter Server system, you can install the application server on the same host that the VMware vCenter Server is installed on, but this is not recommended.

After you have downloaded the MD vCenter Plug-in software, copy the file to the system that is the application server. Run the MD vCenter Plug-in installer to open the installation wizard. The installation wizard installs an application server and the associated .jar files. After the installation is complete, the installation wizard registers the MD vCenter Plug-in with the VMware vCenter Server.

Upgrading from previous versions

If upgrading from a previous version of the MD vCenter Plug-in and you want to use the same host for the application server, copy the new installation file to the existing application server, and then run the installer executable. This process automatically upgrades the previous MD vCenter Plug-in version to this release.

 **NOTE:** This version of the MD vCenter Plug-in supports only the VMware Web Client and does not function with the VMware vSphere Client. If you still use the vSphere Client, you must use the previous version of the MD vCenter Plug-in, release 2.7, to manage MD Storage Arrays in the vSphere Client.

During the installation process, you must provide information about the system components, such as the storage array names, the IP addresses, and the DNS names that are used during the installation. Table 1

shows the information required for each component. See [Configuration worksheet](#) for a printable worksheet.

Table 1. Configuration worksheet example

	Example Information	Required Information	Example Information
vCenter Server Name:	VC-01	DNS name:IP Address:	vc-01.domain.com192.168.51.217
vCenter Administrator Name:	administrator	Password:	Password
Application Server Name:	APP-01	DNS name:IP Address:	app-01.domain.com192.168.51.225
Storage Array 1 Name:	E5400	IP Addresses: Password:	192.168.51.89/90None
Storage Array 2 Name:	E2600	IP Addresses: Password:	192.168.51.91/92None
Storage Array 3 Name:		IP Addresses: Password:	
Storage Administrator User ID:	User1	The user's level of storage administrator rights (See figure for examples)	Read-Only
Storage Administrator User ID:	User2	The user's level of storage administrator rights (See figure for examples)	Read-Write

Installing the MD vCenter Plug-in


Open the MD Storage Manager MD vCenter Plug-in for VMware vCenter installer binary file on the target host system that will be used as the application server.

1. Read the introduction screen, and then click **Next**.
2. Read the license agreement, accept the terms, and then click **Next**.
3. Select the local installation directory for the MD vCenter Plug-in manager or click **Next** for the default.
4. Review the installation details and then click **Install** if the details are correct.
5. Change the port number of the application server or accept the default number of either 8084 or 8081, and then click **Next**.



NOTE: If the MD vCenter Plug-in is installed on the same system as an active vCenter Server, and VMware Update Manager is also installed, the default port number 8084 for the plug-in must be changed to an unused port number.

6. Change the IP address of the application server when necessary. The IP address that is displayed by default is the IP address of the system the installer is running on. Click **Next**.
7. When you are asked to enter the IP address of the vCenter server on which you want to install MD vCenter Plug-in, type the IP address of the vCenter server, and then click **Next**.
8. Enter the administrator's email address for alerts, and then click **Next**.
9. Enter the vCenter administrator's user ID, and then click **Next**.

 **NOTE:** If the Plug-in will be installed into a vSphere 5.5 or 6.0 environment with Single Sign-on (SSO), you must change the default user ID have to match the vSphere 5.5 or 6.0 or later domain configuration (For example, administrator@ vsphere.local).

10. Enter the vCenter administrator's password, and then click **Next**.
11. The installation is now completed. Click **Done** to close the installation wizard.
12. Windows: To ensure that the application server was installed successfully, run the **services.msc** command, and verify that the Application Server service was installed and the service started.
13. Linux: To ensure that the application server is started, run service Application-Server-vCP status.
root@ictm-linux-01:/# service Application-Server-vCP status Application-Server-vCP process is running *root@ictm-linux-01:/#

Configuring the application server and plug-in

After the application server and the MD vCenter Plug-in are installed, verify that the MD vCenter Plug-in was successfully registered with the vCenter server.

1. Open the vSphere Client to the vCenter Server.
2. On the menu, select **Plug-ins** → **Manage Plug-ins**.
The MD vCenter Plug-in for VMware vCenter is displayed as **Enabled**.

If the MD vCenter Plug-in is listed as disabled with an error message stating that it cannot communicate with the application server, ensure that the port number defined for the application server is enabled to pass through any firewalls that might be in use. The default application server Transmission Control Protocol (TCP) port numbers are 8084 and 8081.

After the application server and VMware vCenter Server are configured, the **MD vCenter Plug-in** icon appears in the **Solution and Application** section of the vSphere Web Client home page.

Configuring application server memory

If more than 250 storage arrays are managed from the MD vCenter Plug-in, you must modify the application server configuration file. By default, the application server is configured for 1024 MB of RAM usage. To adjust the settings to support more than 250 arrays, modify the `appserver64.ini` file located on the application server in the `C:\Program Files\Dell\MD Storage Manager Plug-in for VMware vCenter\jetty` directory.

1. Open the `appserver64.ini` file in a text editor.

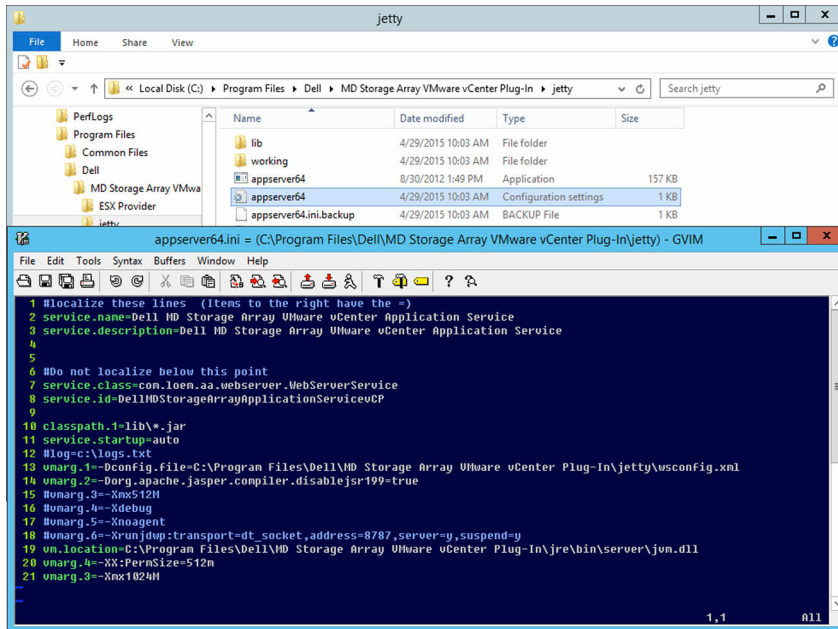




Figure 2. Application server memory settings

2. Locate the `vmarg.3=-Xmx1024M` line.
3. Change 1024 to the number associated with the number of storage arrays.
4. Save the configuration file.
5. Restart the Application Server (vCP) service.

 **NOTE:** If the application server is reinstalled, this setting is reverted to the original setting of 1024 MB. You must edit it again to adjust the application server memory for your environment.

Configuring storage administrator roles

By default, all defined VMware vCenter user IDs have no user rights to MD storage arrays. When a user requires either *read* permissions or *read-write* permissions to access the MD vCenter Plug-in, you must modify the user's role to give user rights access to the MD vCenter Plug-in.

 **NOTE:** If attempting to access the client and you encounter a Not Authorized message, you must restart the vSphere Client after defining the new Storage Administrator role before access is provided. Only privileges are granted.

Creating a role

1. In the **Administration** area on the vSphere Client Home page, click the **Roles** icon. The list of roles and usages is displayed.

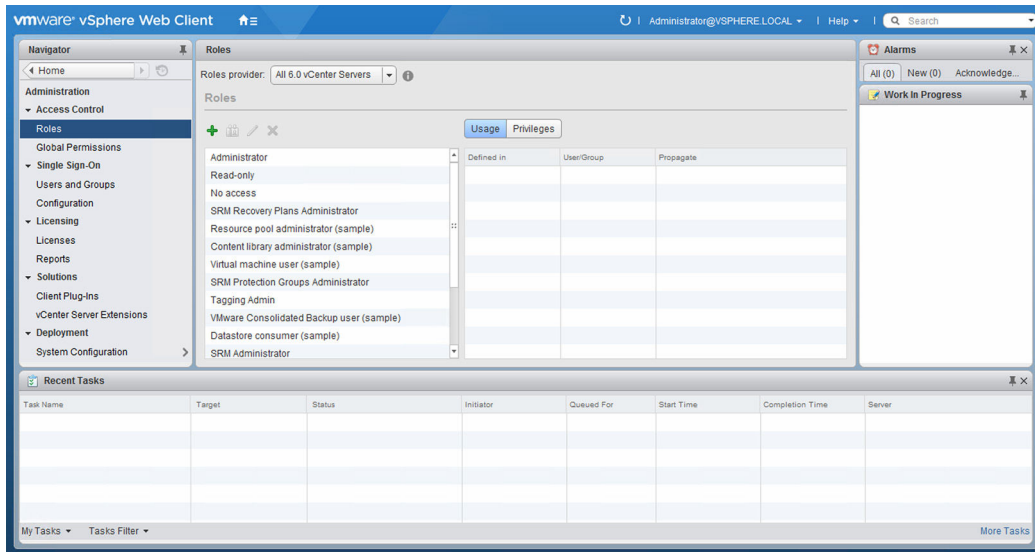


Figure 3. vCenter server roles list

2. Click the green-color plus icon (+) to add a new role.

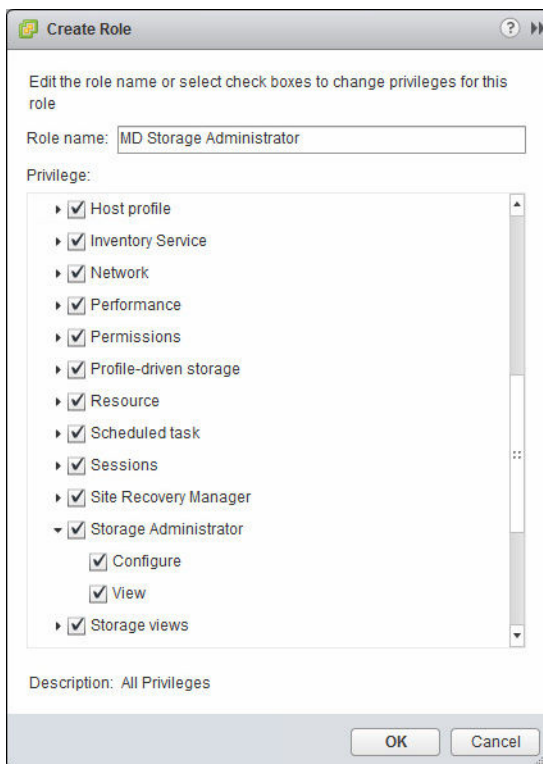




Figure 4. Create role window

3. In the **Role** box, type the name of the new role.
4. In the **Privileges** list, select the access permissions to assign to this role.

 **NOTE:** The administrator role is not editable; therefore, if the administrator user is to manage storage, you must create a new role that has all of the privileges added to it. You must add the administrator to this role by using the following procedure.

5. To allow **Read-Only** (View) or **Read-Write** (Configure) access permissions to the storage arrays, select the appropriate permission from the **Storage Administrator** group.
6. Click **OK**.

 **NOTE:** You can modify existing roles to include the storage administrator privileges, except for the Administrator role, which you cannot modify.

Adding a user ID to a role

1. Click the **VMware Home** icon, select **vCenter Inventory List**, and then click **vCenter Servers** under **Resources Lists**.
2. Select the **vCenter server** element to manage, and then select the **Manage** tab.

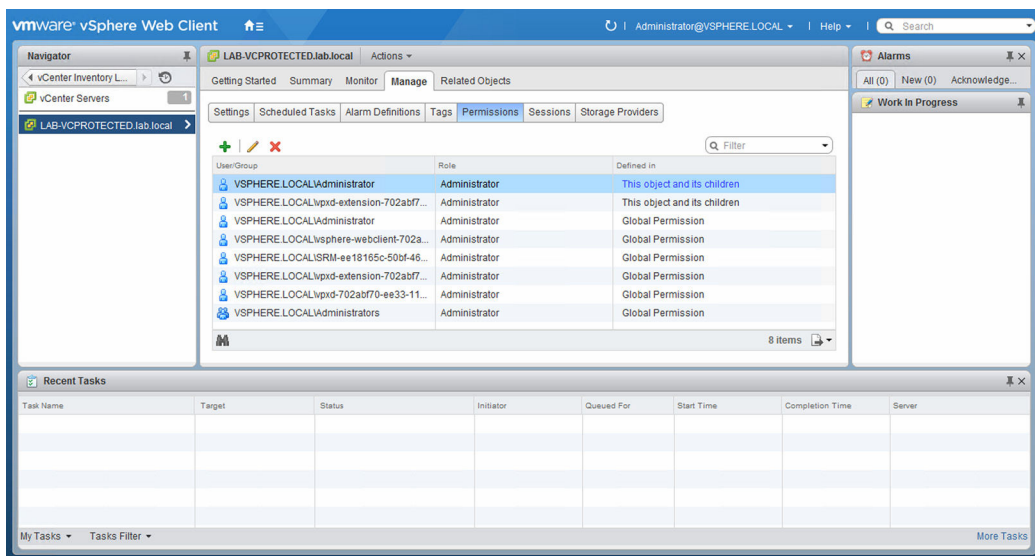


Figure 5. Add permission

3. Click the **green plus** icon to define the users who are members of the Role.

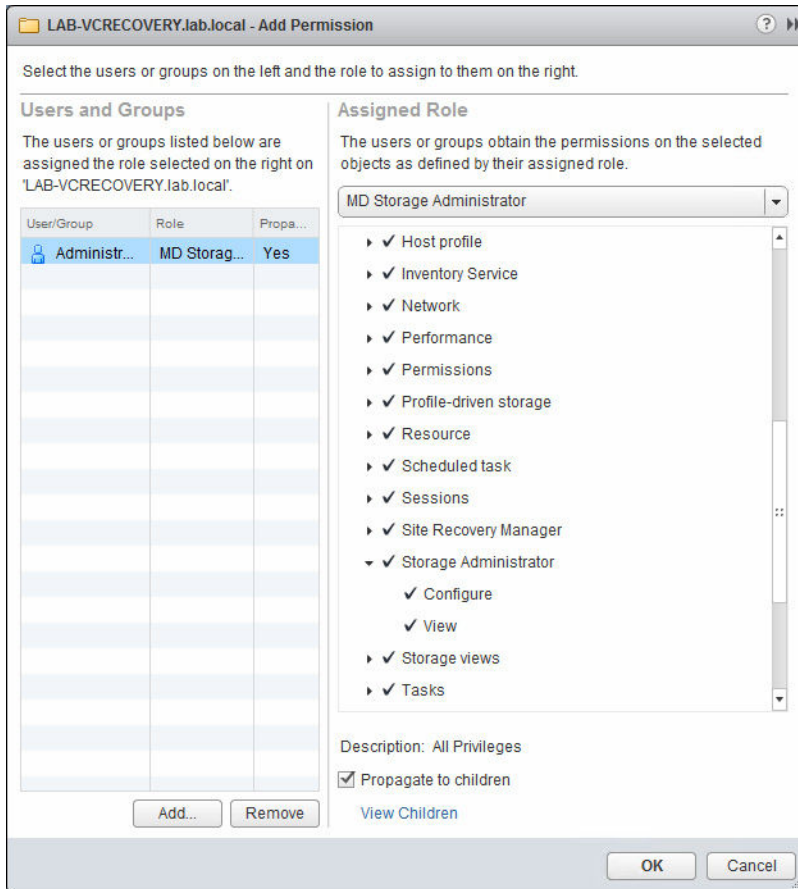


Figure 6. Add permission wizard

4. In the wizard, click **Add**, and select the User IDs that requires access to the storage arrays.
5. Select the assigned role from the drop-down menu, and then click **OK** to apply changes.
6. Click **OK** to apply permissions to the role.

No access

If you are not member of a role that has either the View or Configure MD Storage Administrator permission, you cannot view any statistics from the MD vCenter Plug-in. If you attempt to access a MD vCenter Plug-in feature, you receive the User is not authorized to use this plug-in message.

MD vCenter Plug-in security

The MD vCenter Plug-in uses TLS 1.2 for secure HTTPS communication between the Web Client and MD Storage Manager application server, which necessitates the need for SSL certificate management to establish communication between the client and the application server. The client browser used to communicate with the Web Client dictates the needed procedures to establish communication with the application server. If your environment uses trusted CA-signed SSL certificates, after the application server certificate is signed and reimported, the following procedures are not needed.

Mozilla firefox

For Mozilla Firefox, you can currently accept the self-signed SSL certificate by using the Getting Started pages and permanently store the certificate in Firefox's truststore, which is remembered for future connections between the Web Client and the application server.

Google Chrome

For Google Chrome,

1. Enter the URL for the vCenter Server to connect, and then select the **Advanced** option.
2. Click **Proceed** to advance to the VMware vCenter Server link, and then proceed to log in to the vCenter Server as normal.
3. Click the **MD vCenter Plug-in** icon from the home page, and then select the **How to configure browser security** link in the **Getting Started** tab.
4. Follow the procedures documented on the SSL Certificate Setup page to establish communication to the application server. After communication has been established, the MD vCenter Plug-in should function as normal.

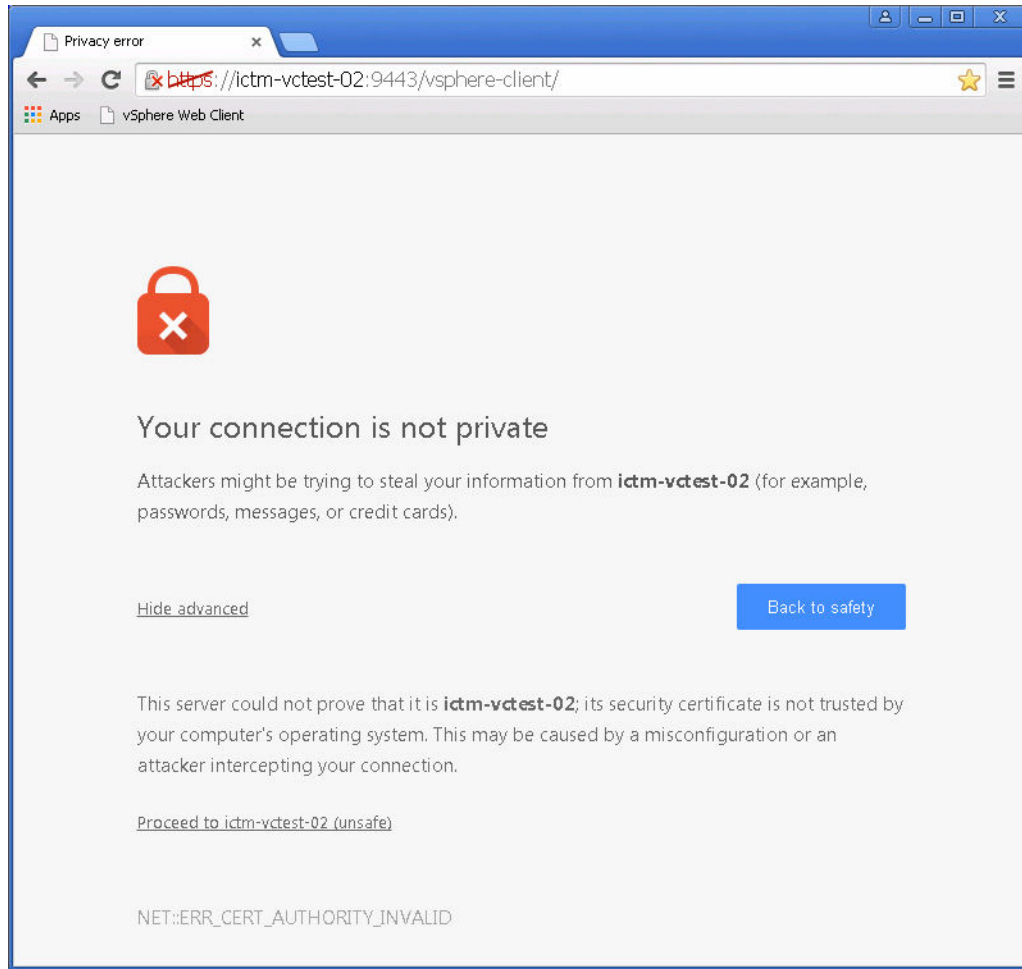



Figure 7. Chrome security page

Microsoft Internet Explorer

For Internet Explorer,

1. Enter the URL for the vCenter Server to connect to, and then click the **Continue to this website (not recommended)** link. You may also have to install the vCenter Server SSL certificate to establish connection.
2. After connected to the vCenter Server, click the **MD vCenter Plug-in** icon from the home page, and then click the **How to configure browser security** link and follow the procedures on the **SSL Certificate Setup** page.

 **NOTE:** After communication has been established with the application server, it may take a couple of minutes for the **Summary** tab information to display.

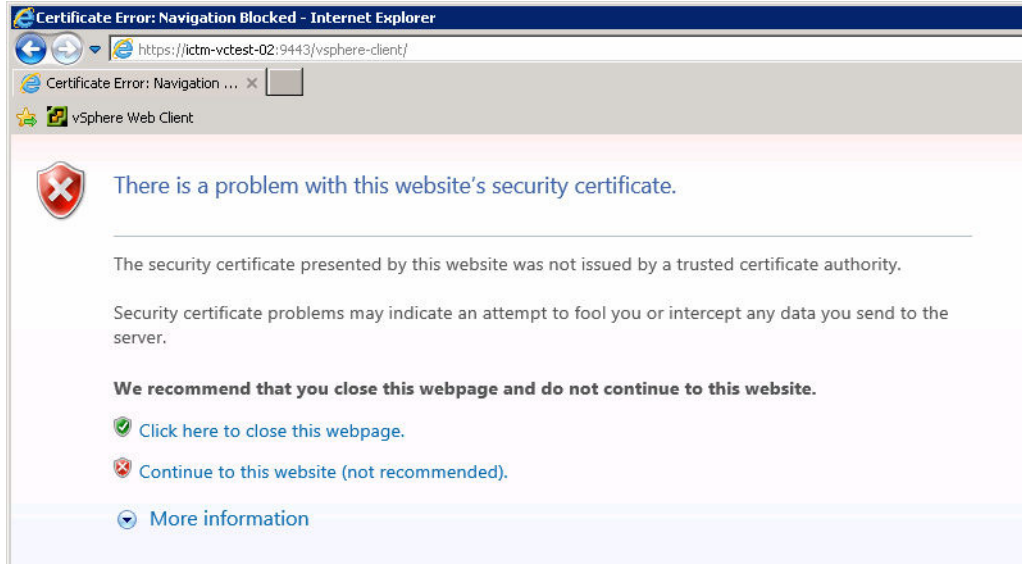


Figure 8. Internet Explorer certificate error page

Application server certificate management

To resolve the self-signed certificate errors with latest browsers, you must have the application server certificate signed by a trusted Certification Authority (CA). During the installation of the MD vCenter Plug-in, an SSL certificate was generated for the application server along with a certificate signing request (CSR) that is specific to that application server. A trusted CA must sign the CSR and then reimported into the Java keystore to implement a fully trusted certificate chain. The following steps describe the process of importing the application server certificate after it is signed by a trusted CA.


NOTE: The CSR is typically located on the application server host directory `C:\Program Files\MD Storage Manager\ MD Storage Manager Plug-in for VMware vCenter\jetty\working`. The file is named `<host_name>.csr`. After the CSR has been signed by a trusted CA, copy the signed certificate and the CA certificate to the same directory.

Import signed application server certificate

On the application server host system, start a command line interface (CLI) or terminal.

1. Change directory to `C:\Program Files\Dell\MD Storage Manager Plug-in for VMware vCenter\jetty\working` directory
It is assumed that both the signed certificate and the CA certificate are copied to the working directory.
2. Import the CA certificate into the Java keystore (if not already in `trustedcacerts` keystore) by running the following at the command line interface (CLI): `..\..\jre\bin\keytool -import -trustcacerts -alias root -file <ca_cert> -keystore keystore -storepass changeit`
3. Import the signed application server certificate into the Java keystore with the following at the CLI: `..\..\jre\bin\keytool -import -trustcacerts -alias jetty -file <signed_cert> -keystore keystore -storepass changeit`
4. Restart the MD Storage Manager Application Server (vCP) service and allow a minute or two for the service to initialize.

5. Ensure that the certificate is working by accessing the following URL (Assumed default port number for https connection.): `https://<application_server_address>:8084/vcenter2/About.html`

 **NOTE:** Mozilla Firefox users also need to ensure the CA certificate has been imported into the browser's authorities' truststore (**Options** → **Advanced** → **Certificates** → **View CertificatesAuthorities**).

Register vCenter server to application server

If the jetty SSL certificate is recreated, you must register the vCenter Server with the application server to detect the new certificate ID. To reregister the vCenter Server, navigate to the MD vCenter Plug-in Getting Started page, click the **Manage vCenter Server Access** link, and log in to the **Manage vCenter Server Access** page.

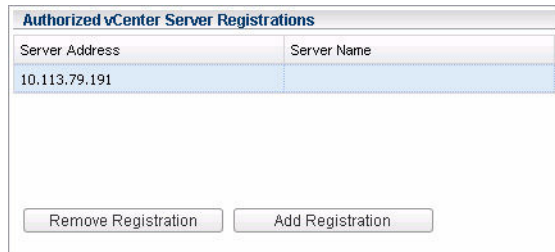


Figure 9. Authorized vCenter server registrations dialog box

1. Select the vCenter Server IP address of the vCenter Server to reconfigure.
2. Click the **Remove Registration** button to remove the old registration.
3. Click the **Add Registration** button and enter the vCenter Server Address, DNS Name, User ID, and Password.
4. Click the **Add** button.

Import - export configuration file

The MD vCenter Plug-in supports the ability to import or export the storage array manager configuration file that maintains the list of configured storage arrays and metadata information. This feature is useful for backing up array configurations or deployment of new application server by using an existing configuration file. To access this functionality, navigate to the **MD vCenter Plug-in Getting Started** page and click the **Manage Arraydata.xml Data** link. Follow the procedures documented on the **Manage Arraydata.xml File** page to log in to the application server.

After you log in to the application server, the **Import or Export a Configuration File** page is displayed.

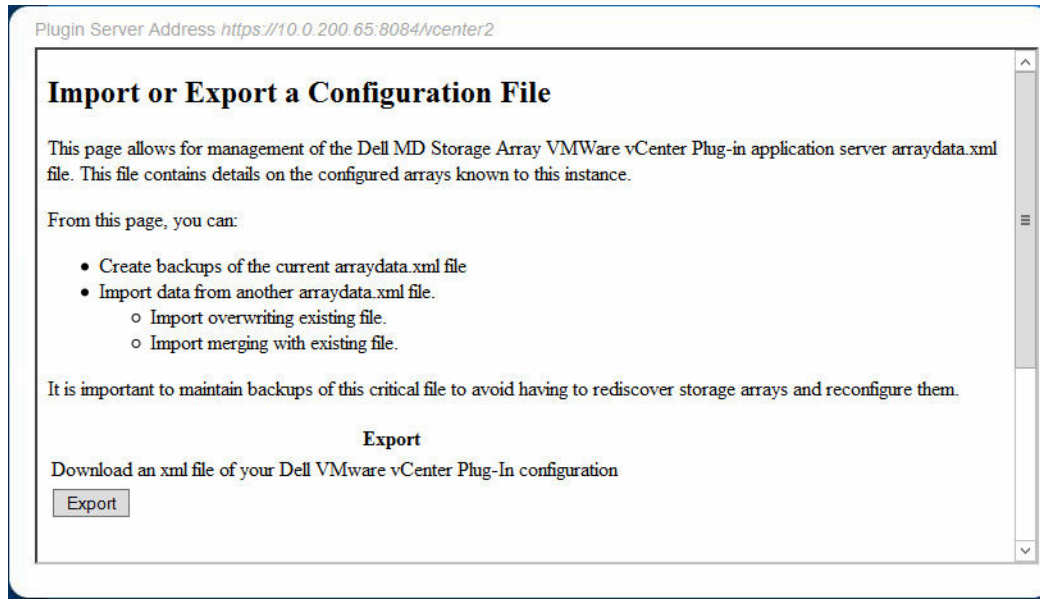


Figure 10. Import or export a configuration file page

Export

To export the current configuration file, click the **Export** button and select the location to which to save the file.

Import

To import a previously saved configuration file, perform the following task:

1. Click the **Browse** button.
2. Navigate to the configuration file to import and click **Open**.
3. Select the import option button to use (**Merge** or **Overwrite**).
4. Click the **Import** button.

Application server user management

The application server user management is controlled using the users.properties file located in C:\Program Files\MD Storage Manager\MD Storage Manager Plug-in for VMWare vCenter\jetty\working\config directory.

The format of the users.properties file is ID name, MD5 password hash, user ID.

```
# #Thu Apr 11 18:02:33 PDT 2013 admin=MD5\:  
21232f297a57a5a743894a0e4a801fc3,admin ro=MD5\:  
3605c251087b88216c9bca890e07ad9c,storage.ro #rw=MD5\:  
038c0dc8a958ffeal7af047244fb6960,storage.rw vcenter=MD5\:  
736849783cb137f97c4e535c246afd4b,storage.rw
```

Dell does not recommend that you store your passwords in clear text. A MD5 password hash may be generated from the following site: <http://md5hashgenerator.com/index.php>. Enter the password to be

hashed in the **String** box, and then click **Generate MD5 Hash**. Copy the hashed results to the `users.properties` file in place of the existing user password hash (#).

Alternatively, you may use `md5sum` on a UNIX system to generate the MD5 has by using the following (substitute your password for `YOUR_PASSWORD_HERE`):

```
$ echo -n "YOUR_PASSWORD_HERE" | md5sum | awk '{print $1}'  
635893277b6b217e327565d3427ee5e8
```

Copy and replace the MD5 hash, in the `users.properties` file for the specific user, with the output of the above command.



NOTE: You must specify the `'-n'` option to avoid passing carriage return from `echo` to `md5sum` utility.

Configuring VMware ESXi hosts

Configuring ALUA SUPPORT

Firmware versions 7.84 and later allows for support of an Asymmetric Logical Unit Access (ALUA) configuration when the Target Port Group Support (TPGS) flag is set to 'on' (default for 7.84). This support allows for active-active I/O throughput between all paths to the current owning RAID controller module and LUN transfer to the alternate RAID controller module in failure scenarios. On the basis of your environment, you may be able to achieve higher performance by switching the default multipath policy from MRU to Round Robin (RR). This performance is accomplished by performing the following task:

1. Identify current SATP claim rule in use for your storage.

```

~ # esxcli storage nmp device list
naa.600a0b8000264e2a00007ed24f1c1b33
Device Display Name: LSI Fibre Channel Disk (naa.600a0b8000264e2a00007ed24f1c1b33)
Storage Array Type: VMW_SATP_LSI
Storage Array Type Device Config: SATP VMW_SATP_LSI does not support device configuration.
Path Selection Policy: VMW_PSP_MRU
Path Selection Policy Device Config: Current Path=vmhba5:C0:T1:L0
Path Selection Policy Device Custom Config:
Working Paths: vmhba5:C0:T1:L0
  
```

Figure 11. esxcli storage nmp device list

2. Identify default PSP rule for SATP in use.

(Optional) Change default PSP rule to VMware RR.

Adding ALUA SATP claim rule


1. To create a new claim rule, enter the following at the CLI:

```
#esxcli storage nmp satp rule add -s VMW_SATP_ALUA -V LSI -M INF-01-00 -c
tpgs_on -P VMW_PSP_RR -e "LSI ALUA Claim Rule"
```

This command creates a new claim rule for the VMW_SATP_ALUA satp rule to claim any LUNs matching the following:

```
Vendor ID = LSI
Model ID = INF-01-00
TPGS Flag = on
```

2. Assign the default path selection policy to round robin (VMW_PSP_RR).

 **NOTE:** There are different methods to manage SATP claim rules; and your environment may require different parameters to enable ALUA support. Consult the VMware Knowledge Base for additional information.

```

~ # esxcli storage nmp device list
naa.60080e50001f61e400000fbc4fd87d46
Device Display Name: LSI Fibre Channel Disk (naa.60080e50001f61e400000fbc4fd87d46)
Storage Array Type: VMW_SATP_ALUA ← New SATP Claim Rule
Storage Array Type Device Config: {implicit_support=on;explicit_support=on; explicit_allow=on;al
ua_followover=on;(TPG_id=1,TPG_state=AO){TPG_id=0,TPG_state=ANO}}
Path Selection Policy: VMW_PSP_RR ← New PSP Policy
Path Selection Policy Device Config: {policy=rr,iops=1000,bytes=10485760,useANO=0,lastPathIndex=
1: NumIOsPending=0,numBytesPending=0}
Path Selection Policy Device Custom Config:
Working Paths: vmhba5:C0:T1:L0, vmhba7:C0:T1:L0

```

Figure 12. ALUA configured storage

Configuring iSCSI storage

To configure the network for software iSCSI storage, create an iSCSI VM kernel port, and map it to a physical network interface card (NIC) that handles iSCSI traffic. On the basis of number of physical NICs that you use for iSCSI network traffic, the networking setup can be different.

To configure iSCSI adapters with this wizard, iSCSI HBAs must already be defined in vSphere. This task is accomplished by configuring an iSCSI network and adding iSCSI software initiator under storage adapters.

To configure iSCSI storage, read the [VMware Best Practices for Running VMware vSphere on iSCSI](#) or search for videos on implementing iSCSI with vSphere.

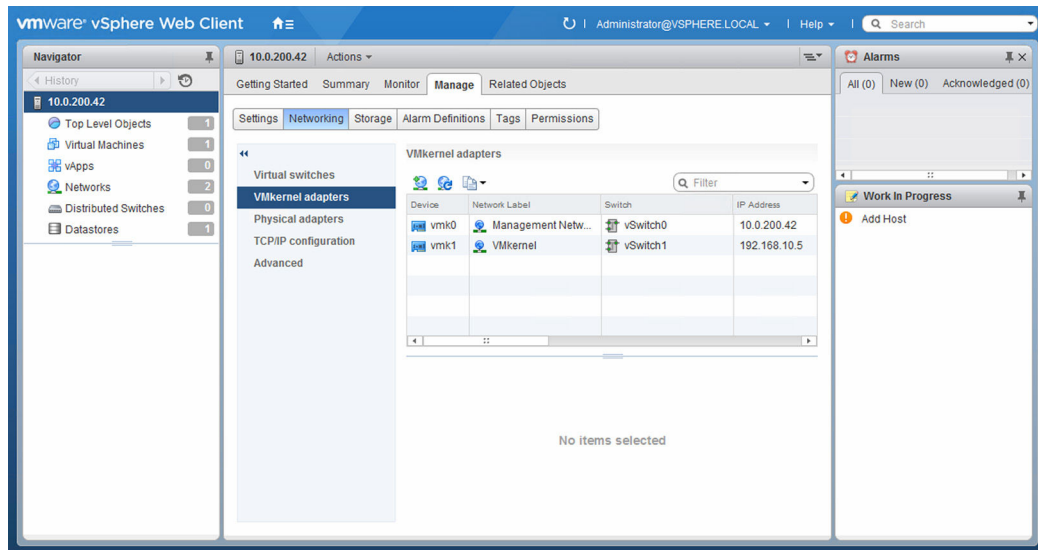


Figure 13. Networking configuration view

1. Add a VMkernel network for iSCSI communication.
2. Select NICs to use for iSCSI and configure.
3. In the **Storage Adapters** view, click **Add**, and then select **Add Software iSCSI Adapter**.

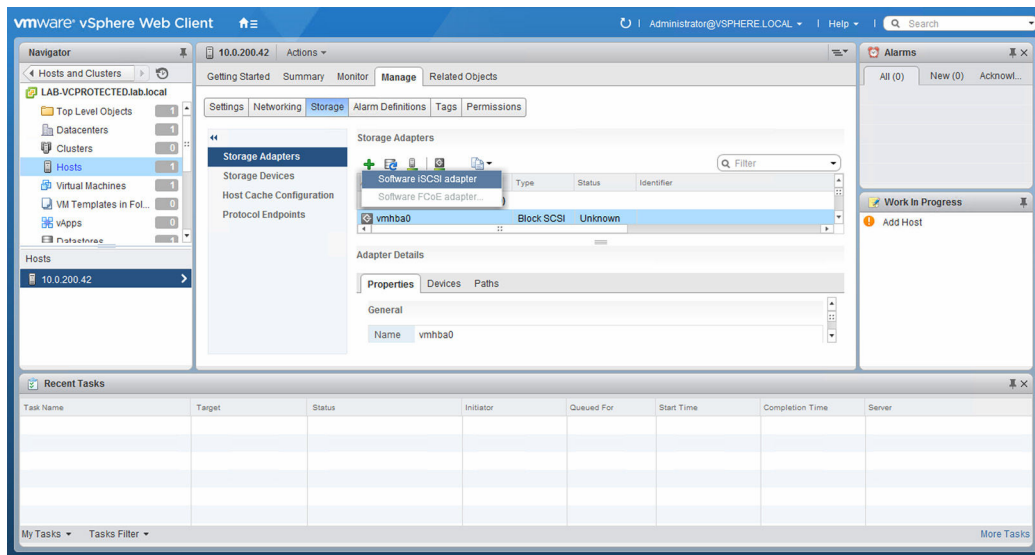


Figure 14. Add software iSCSI adapter

Additional information

For more information about network configuration for software iSCSI storage, refer to the following sections in the *iSCSI SAN Configuration Guide* in the VMware vSphere Online Library:

- Configuring iSCSI Initiators and Storage
- Setting Up Software iSCSI Initiators
- Networking Configuration for Software iSCSI Storage

Configuring SAS support on ESXi hosts

For the MD vCenter Plug-in to configure ESXi hosts to the MD storage arrays, with SAS connections, an updated version of the LSI SAS SMI-S provider must be installed on the ESXi hosts.

Upgrading the SAS SMI-S provider

NOTE: SAS support is available only for ESXi version 5.1 and later host versions. Previous versions of ESX and ESXi are not supported.

NOTE: This upgrade is required only to allow the Host to Storage Configuration option to configure SAS connected storage arrays. When the storage arrays are already configured, or the storage arrays are not SAS-connected, you do not need to upgrade the in-box provider.

To use the SAS provider, you must first deploy it on the ESXi servers to be configured. This deployment requires that either Secure File Transfer Protocol (SFTP) or Secure Copy (SCP) is enabled on the ESXi host. To install the SAS SMI-S Provider upgrade package, you must have root access. To install the package by remote login, either create a new user with host login privileges, or enable remote logins for the root user.

Enabling root login from a console login on ESXi hosts


1. Press F2 to switch to the diagnostic console.
2. Select **Troubleshooting Options**.
3. Select **Enable Remote Tech Support**.
4. Select **Restart Management Agents**.
5. Press Esc to close the **Configuration** menu.

Creating a new user login

1. Connect the Web Client directly to the ESXi host to be configured.
2. Select the **User & Groups** tab in the **Home** → **Inventory** → **Inventory window**.
3. Right-click, and then click **Add**.
4. Type or select the relevant information for the new user, and ensure to select **Grant shell access to this user**.
5. Click **OK** to save changes.
6. After logging in as this new user, use the su command to assume the 'super user' role.

Installing the SAS provider upgrade of ESXi

1. Use scp (or a utility like FileZilla) to copy the `vmware-esx-provider-lsiprovider.vib` file to the target ESXi host.
2. Log in to the ESXi server as `root`.

 **NOTE:** If root is not enabled, enable it temporarily for this install.

3. Run `esxcli software vib install -v /tmp/vmware-esx-provider-lsiprovider.vib` all on same line (This step assumes the `.vib` file is located in the `/tmp` directory).


The following message appears:

```
~ # esxcli software vib install -v /tmp/vmware-esx-provider-lsiprovider.vib
Installation Result Message: The update completed successfully, but the
system needs to be rebooted for the changes to be effective. Reboot
Required: true VIBs Installed: LSI_bootbank_lsiprovider_500.04.V0.54-0004
VIBs Removed: VIBs Skipped:Reboot the host after stopping any running VMs.
```

4. After the host reboots, run `esxcli software vib list |grep LSI` to ensure that the update was applied.

```
~ # esxcli software vib list |grep LSI lsiprovider 500.04.V0.54-0004 LSI
VMwareAccepted 2015-02-05
```

Configuring ESXi hosts to Storage Arrays

 **NOTE:** Before configuring ESXi hosts to storage arrays, you must already have added or discovered storage arrays in your environment. For more information, see [Add Storage Array](#) and [Discover Storage Arrays](#).

To use the Automatic Host Configuration utility, go to **Hosts** in the Web Client, and select the ESXi host that you want to configure. Right-click the ESXi host, and select **Configure ESXi host to Storage Array** from the drop-down menu under **All MD vCenter Plug-in**.

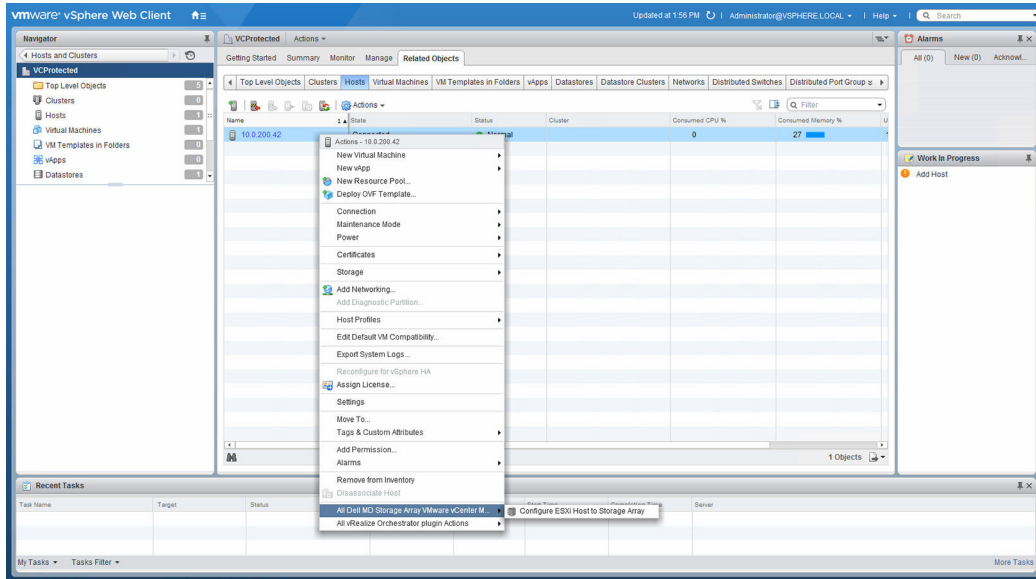


Figure 15. Configure ESXi host to storage array configuration wizard menu

The **Configure ESXi host to Storage Array** wizard is displayed. From this wizard, you can see how the current ESXi host is configured to the storage array (if it is already configured). You can also add a host or host group, rename a host or host group, remove a host or host group, and automatically configure the ESXi host to another storage array.

Configure ESXi Host to Storage Array wizard

The wizard guides you through the process of configuring the HBAs on the selected ESXi host to the storage arrays configured in the Array Manager. The wizard also provides information required to detect and configure SAS HBAs in the ESXi hosts.

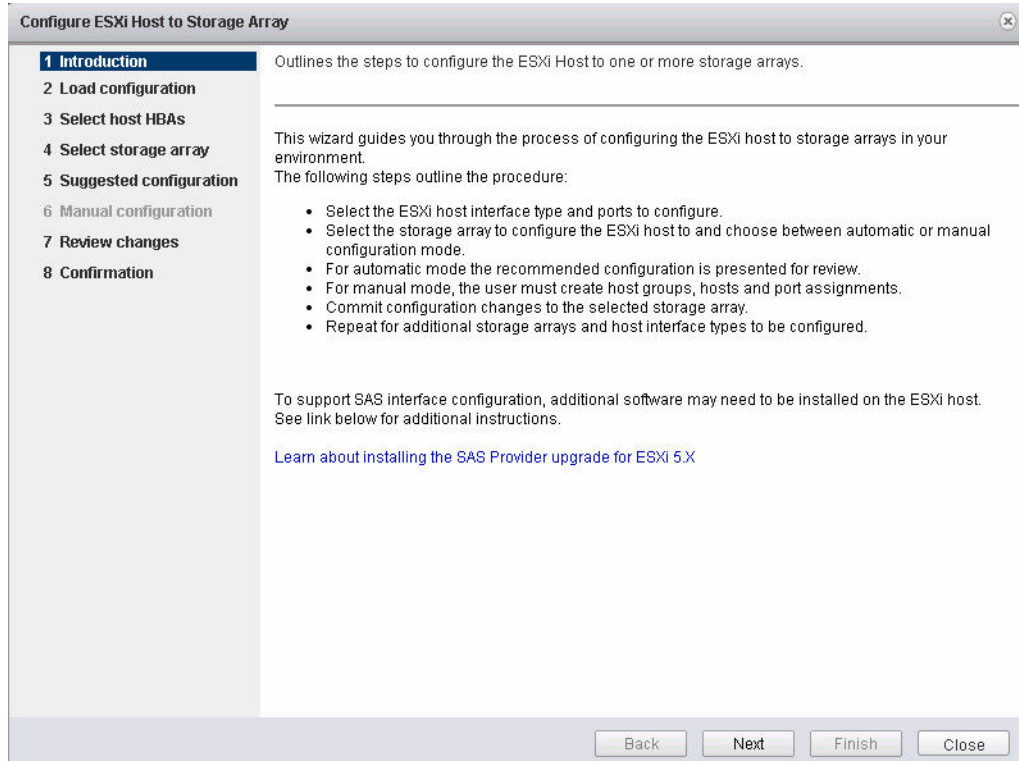


Figure 16. Configure ESXi Host to Storage Array wizard

1. Click **Next** after reading through the Introduction page.
The **Inspect Configuration** page is then initiated which verifies user privileges, gathers information about the selected ESXi host, and gathers information on the configured storage arrays. This process may take a few minutes depending on the number of HBAs, and storage arrays configured in the system.
2. Click **Next** after all three discovery processes complete and three green check marks are displayed.
The **Select Host HBAs** page allows for selection of the HBAs that you want to configure from the ESXi host. Select the option button next to the interface type to be configured. Select all of the HBA ports that will be configured for the target storage array.
3. Click **Next** after selecting the HBA you want to configure.
The **Select Storage Array** page is displayed.
4. Select the storage array that will be used by the ESXi host being configured. Click **Next** after selection.
The **Suggested Configuration** page is displayed showing the recommended HBA port configuration, host configuration, and host group configuration. The suggested changes are displayed in blue italics font.
5. To accept the suggest configuration, click **Next**; or, to manually configure the ESXi host, select the **Use manual configuration** option, and then click **Next**.
 - a. If the **manual configuration** option is selected, the **Manual Configuration** page is displayed.
 - b. If the ESXi host will be participating in a cluster configuration with other ESXi hosts, and no existing host group exists for the cluster configuration, select the storage array name and click the **Add Host Group** button. Enter the name for the new host group, and then click **OK**.

- c. If the host group for the cluster already exists, select the host group name to add this host to. Click **Add Host** button and enter the name for this ESXi host and select the check boxes next to the HBAs to be used for the host definition.

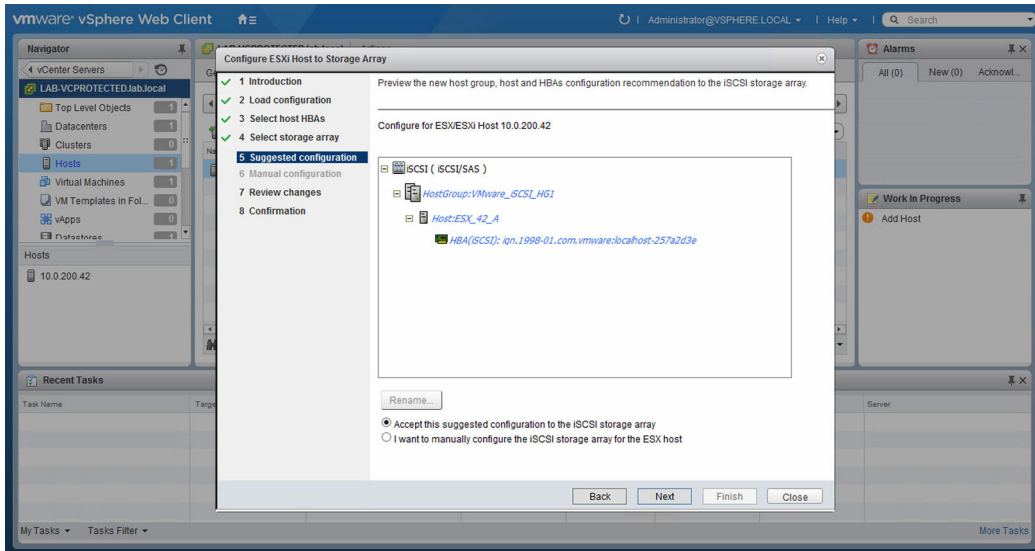



Figure 17. Suggested ESXi host configuration

6. Select **Next** after completing manual configuration.

 **NOTE:** Additional host configurations in a different host group from the previously defined host.

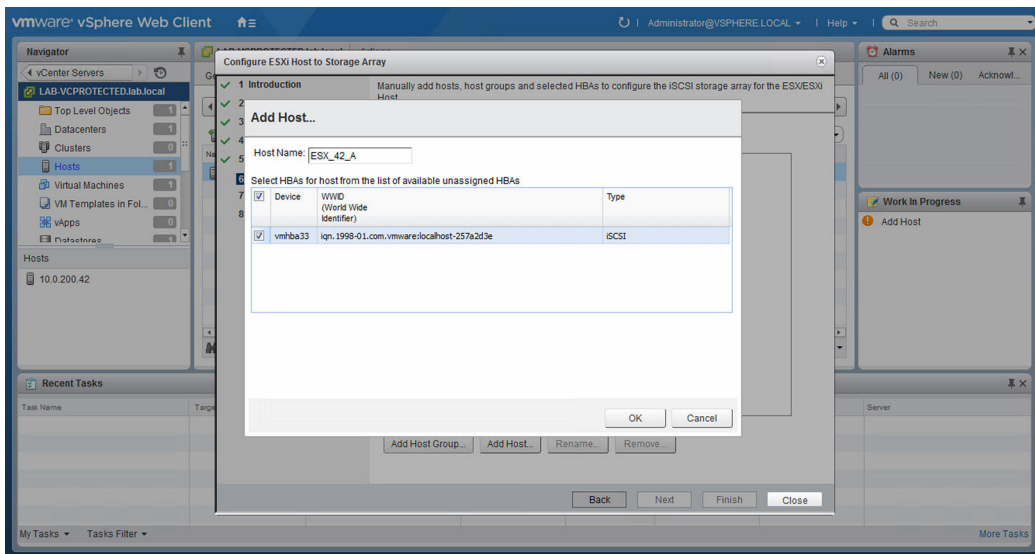




Figure 18. Manual add host dialog box

 **NOTE:** The **Configure ESXi Host to Storage Array** wizard does not detect how the switch fabric is zoned and suggested configurations are based on how the HBA ports are detected. The suggested configuration may require the FC fabric to be rezoned based on the environment's cabling.

You cannot rename or remove existing configured hosts or host groups. Existing host and host group configuration changes must be performed from the MD storage management software. Click **Next** after all host groups and hosts have been defined.

7. The **Review Changes** page is then displayed showing the changes that are applied to the storage array. If you accept the changes, click the **Next** button.
8. A real-time summary page is then displayed showing the status of the changes being applied to the selected storage array. After the changes have been applied, click the **Re run** button to repeat the configuration process on another storage array or click **Close** to close the configuration wizard. You must manually close the progress window after the changes are complete.

 **NOTE:** To use multiple host groups as described, the storage array must have the Storage Partitioning premium feature enabled.

 **NOTE:** By default, the wizard displays only hosts that are prefixed with 'ESX_' and host groups prefixed with 'VMware_'. Other hosts or host groups configured on the storage array are not displayed in the wizard unless the **Show all host groups** check box is selected.

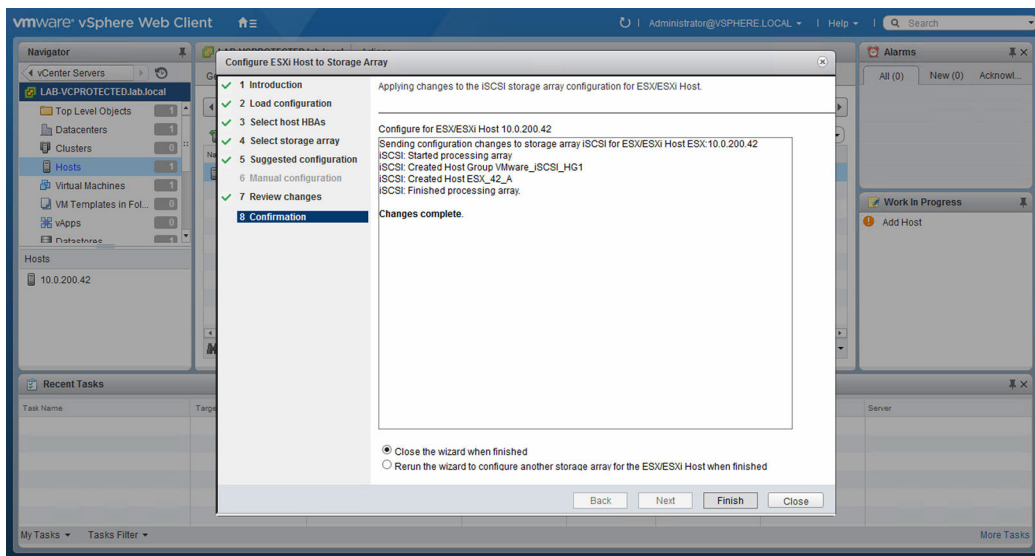


Figure 19. Apply changes message box

MD vCenter Plug-in manager

MD vCenter Plug-in features

To use the MD vCenter Plug-in to manage MD storage arrays, click the **MD vCenter Plug-in** icon on the Web Client home page in the Inventories section.

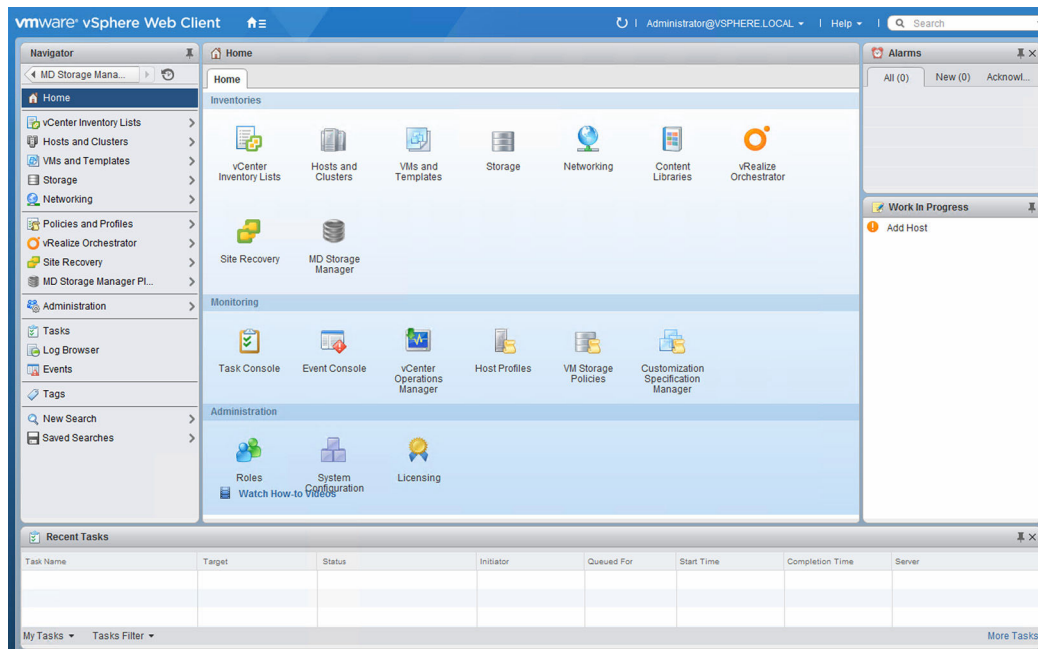


Figure 20. MD vCenter Plug-in for VMware vCenter icon

The Storage Arrays container displays in the upper-left corner and the **Getting Started** page in the main window. The Storage Arrays container provides direct access to management of the configured storage arrays in the plug-in. The **Getting Started** pages provide help tips to set up and configure the MD vCenter Plug-in. The **Summary** tab displays summary information for all storage arrays known to the plug-in.



Figure 21. Getting started page

The MD vCenter Plug-in **Summary** tab provides summary information about all of the storage arrays configured in the plug-in including:

- Plug-in version and copyright
- Aggregate storage capacity
- Storage array status breakdown
- Storage array objects
- Storage array hardware details

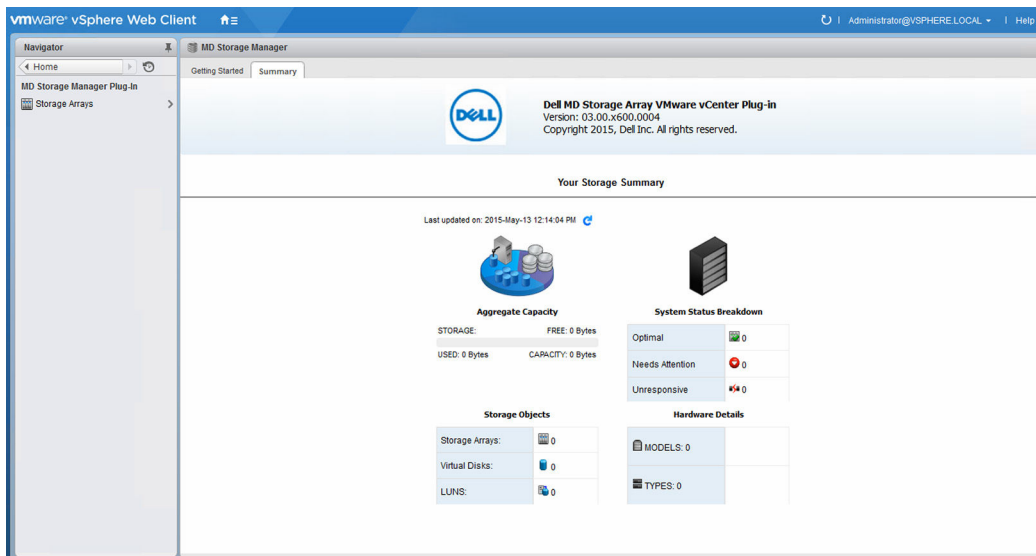


Figure 22. Storage array summary

Storage Arrays Objects view

Storage Arrays Objects view

The Storage Arrays Objects view displays all of the known storage arrays in a list view that you can customize by clicking the arrow symbol in the column header and selecting which columns to display. You can also sort the columns.

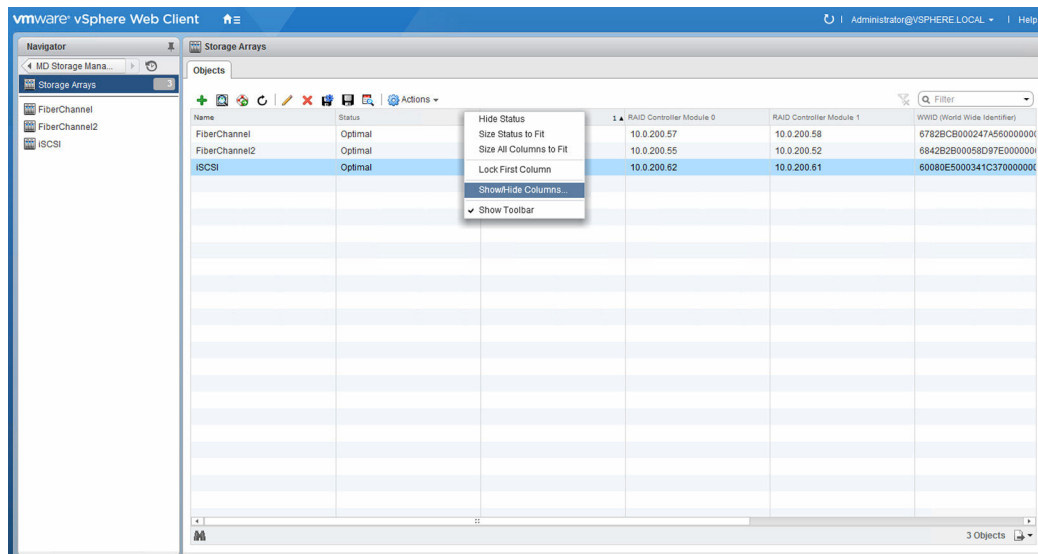


Figure 23. All Storage Arrays Table view

The Storage Arrays container view shows a list of known storage arrays and allows you add or remove storage arrays. The following options are available from the storage array manager view:

- [Add Storage Array](#)
- [Discover Storage Arrays](#)
- [Collect Support Bundle](#)
- [Edit Storage Array](#)
- [Remove Storage Arrays](#)
- [Enabling automatic save configuration backups](#)
- [Manually Save Configuration](#)
- [View Event Log](#)

Add Storage Array

The Add Storage Array enables you to add a single storage array to the array manager view and type storage array password, if necessary. The Add Array also provides the ability to assign asset tags to the new storage array. If you need to add multiple arrays, see [Discover Storage Arrays](#).

1. In the **Commands** area of the **MD vCenter Plug-in Array Manager** view, click **Add Storage Array**. The **Add Storage Array** dialog box is displayed.

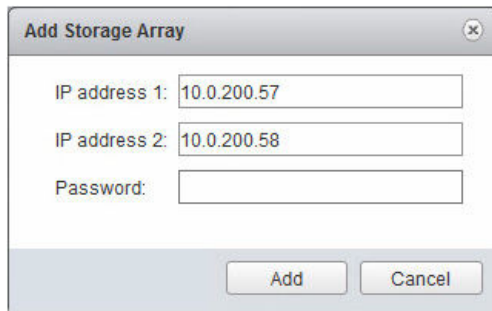


Figure 24. Add Storage Array window

2. In the **RAID Controller Module 0** box, type the IP address or DNS name of the storage array's RAID controller module 0.
3. In the **RAID Controller Module 1** box, type the IP address or DNS name of the storage array's RAID controller module 1.
4. In the **Password** box, type the password for the storage array that you are adding to the MD vCenter Plug-in.
5. Click **Add**.
The storage array is added.

Discover Storage Arrays

The MD vCenter Plug-in enables you to auto discover storage arrays in a subnet to add to the Storage Arrays container. To perform an auto discovery, perform the following task:

1. In the **Commands** area, click **Discover Storage Arrays**.
The **Discover Storage Arrays** dialog box is displayed. (Figure 25 with **IP Start** and **IP End** along with the global array **Password** settings box.)

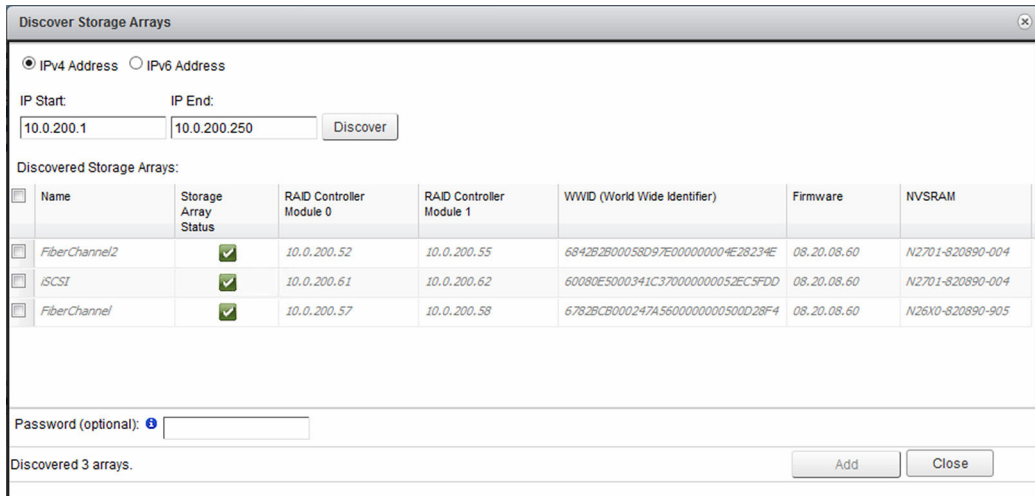



Figure 25. Discover Storage Arrays window

2. Enter the starting TCP/IP address of the IP range to discover storage arrays on.
3. Enter the ending TCP/IP address of the IP range to discover storage arrays on.
4. Click the **Discover** button to start the scan.
 -  **NOTE:** This process may take several minutes depending on the scope of discovery.
5. (Optional) If the same array password is used for all the arrays to be added, you can specify it now in the **Password** box.
6. Click **Add** to add all selected storage arrays to the MD vCenter Plug-in Array Manager.
7. Click the **Close** button to close the **Discover Storage Arrays** window when finished adding arrays.

Collect Support Bundle

The collect support bundle option performs an automatic collection of logs and configuration information on your environment to be used by technical support to assist in problem resolution. To generate a support bundle, perform the following task:

1. Select the target storage array in the right pane (table list).
2. Click the **Collect Support Bundle** icon. (This step may take some time.)
3. Your default browser should open a file save dialog.
4. Accept and complete the file download on the basis of your browser's settings.
5. Click **Close** to finish the operation.

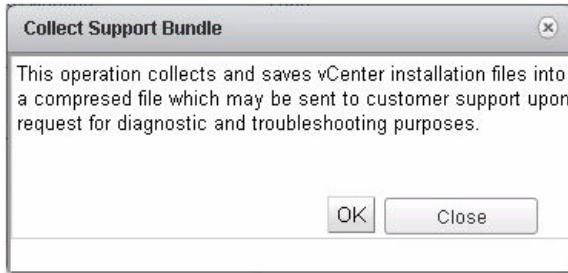


Figure 26. Collect Support Bundle dialog box

After the file `vcpsupport_<date>.zip` is downloaded to your system, you may then send it to Dell technical support upon request.

Edit Storage Array

The Edit Storage Array option provides the ability to modify the selected storage array. Select the storage array to modify, and then click the **Edit Storage Array** icon. You have the option to modify the settings for the selected array.

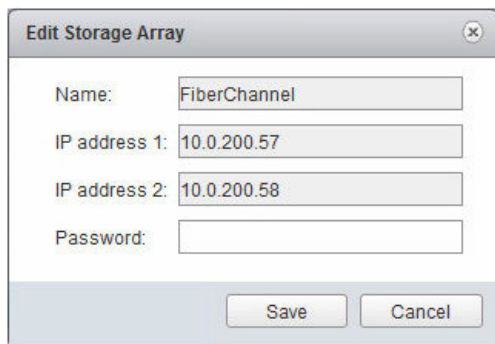


Figure 27. Edit Storage Array dialog box

Remove Storage Arrays

You can remove storage arrays by either selecting an individual storage array in the **Objects** view or by selecting multiple storage arrays.

1. On the **Web Client Storage Arrays Objects** tab, select the Storage Arrays you want to remove.
2. Click the **Remove Storage Arrays** icon.

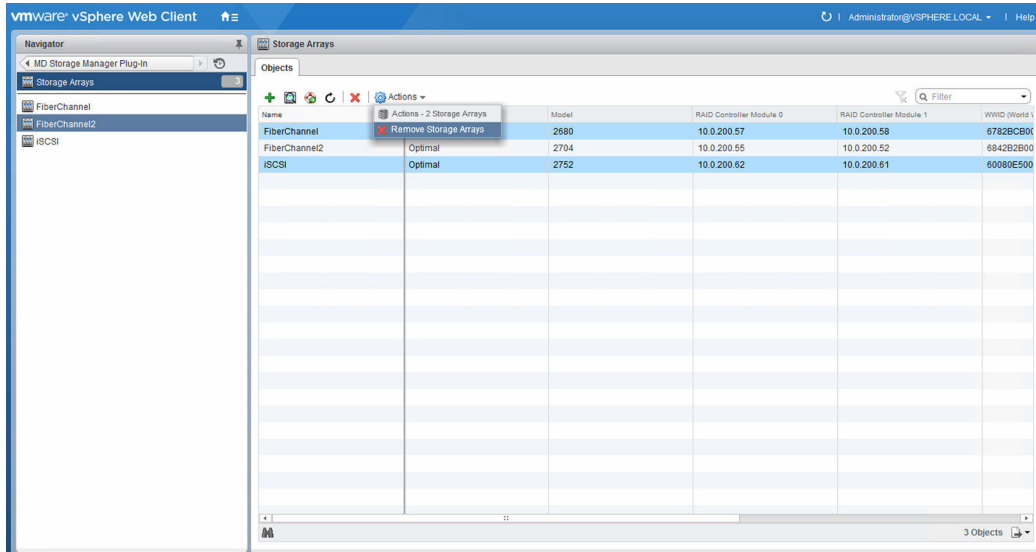


Figure 28. Remove Multiple Storage Arrays window

A message is displayed asking whether or not you want to remove storage arrays.

3. Click **Yes**.

Saving the storage array configuration

The MD vCenter Plug-in supports storage array configuration backups to script files that can be applied to a storage array from the MD Storage Manager software. These script files facilitate the restoration of the storage array configuration, such as storage array name, disk group configurations, virtual disk names, and virtual disk capacities.

The MD vCenter Plug-in does not back up data that is stored on the storage array. You must use a standard backup strategy to recover user data that is saved on the virtual disks.

The MD vCenter Plug-in Automatic Save Configuration feature performs a save configuration of the storage array after a configuration event has occurred on the storage array, either from the MD vCenter Plug-in or from the MD storage management software application.

Only the configuration information for the storage array is saved during a save configuration operation. Data stored on the virtual disks is not saved.

NOTE: Only the base storage array configuration information is saved. Objects such as snapshots, virtual disk copies, and remote replications are not saved to the script file.

A storage array modification event starts a four-minute timer, on the application server, at the time of the event on the storage array. If in that four-minute time frame, no other configuration events have occurred on the storage array, a save configuration occurs. If another modification event occurs in the four-minute time window, the timer is reset to four minutes. When no modification events are detected on the storage array in the four-minute time window, a save configuration is performed. Automatic Save Configuration maintains the last 15 save-configuration script files.

Enabling automatic save configuration backups

You can set these backups to automatic or manually initiated. To enable automatic backups of the storage array base configuration, perform the following task:

1. Select the target storage array from the list of managed storage arrays.
2. Click the **Auto Save Configuration** icon.

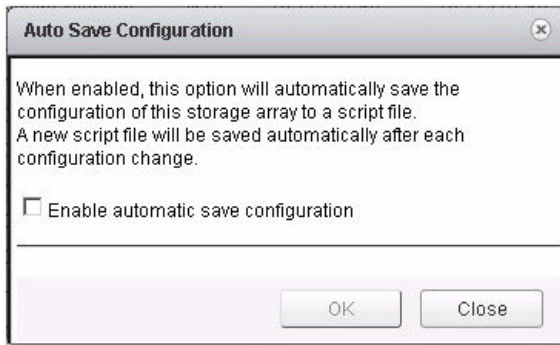




Figure 29. Auto Save Configuration dialog box

3. Select the **Enable automatic save configuration** check box.
4. Click **OK**.
5. Click **Close**.


 **NOTE:** After automatic configuration backups are enabled, they are persisted between restarts of the MD Storage Manager application server and vCenter Server. To disable automatic save configuration, clear the check box in the **Automatically Save Configuration** dialog box.


 **NOTE:** The automatic backup script files are located in the following directory: C:\Program Files\Dell\ MD Storage Manager Plug-in for VMware vCenter\jetty\working\savecfg. The files are named <storage_array_name>_<date_time_stamp>.cfg.

Manually Save Configuration

To manually save a configuration, perform the following task from the **Storage Arrays Objects** tab:

1. In the right pane, click the name of the storage array.
2. Click the **Manually Save Configuration** icon.
The **Manual Save Configuration** dialog box is displayed.
3. Click **OK**.

 **NOTE:** You may receive a security alert informing you are about to leave a secure Internet connection. Select **Yes**.

 **NOTE:** If you see an error message stating your current security settings, do not download this file. you must add the secured HTTP address for your application server to the trusted sites list inside of Internet Explorer.

The **File Download** dialog box is displayed.

4. Click **Save**.
5. Click **Close**.

View Event Log

The View Event Log utility provides access to the selected storage array's major event log. To access a storage array's major event log, perform the following task:

1. Select a storage array from the list of managed arrays.
2. Click the **View Event Log** icon or the **View Event Log** option, from the **Actions** drop-down menu.

Index	Sequence	Date/Time	Priority	Component Type	Component Location	Description
0	21255	5/4/15 10:36:30 AM	🚫		0	Unknown
1	21254	5/4/15 10:36:29 AM	🚫		0	Unknown
2	21253	5/4/15 10:08:06 AM	🚫		0	Unknown
3	21252	5/4/15 10:08:06 AM	🚫		0	Unknown
4	21251	5/4/15 9:52:22 AM	🚫		0	Unknown
5	21250	5/4/15 9:52:22 AM	🚫		0	Unknown
6	21249	5/4/15 5:45:25 AM	🚫		0	Unknown
7	21248	5/4/15 5:45:25 AM	🚫		0	Unknown
8	21247	5/4/15 1:38:29 AM	🚫		0	Unknown
9	21246	5/4/15 1:38:29 AM	🚫		0	Unknown
10	21245	5/4/15 12:28:20 AM	🚫		0	Unknown

Sequence number: 21250
Date/Time: May 4, 2015 9:52:22 AM
Event type: 5023
Event category:
Priority:
Description: Unknown
Event specific codes: 1/0/0
Component type:
Component location: 0
Logged by:

Loaded 100 of 2749 total events.

Figure 30. View Event Log display

Selected Storage Array Summary tab

When you click a storage array from the Storage Arrays list, a summary of the selected storage array is displayed on the page. This summary includes information about the status of the storage array, the number of RAID controller module, their status, their IP addresses, the storage array WWN, the chassis serial number, firmware and NVSRAM versions, and physical disk information. The storage array Summary tab also provides access to the Recovery Guru information. If the storage array is non-optimal, the **Needs Attention** link is activated describing the issues with the current storage array.

The screenshot displays the VMware vSphere Web Client interface for the 'FiberChannel2' storage array. The main content area is divided into several sections:

- Summary:** Shows the storage array name 'FiberChannel2', model '2704', and status 'Optimal'. Storage usage is shown as 200.29 GB used out of 2.98 TB capacity, with 2.78 TB free.
- Storage Array Information:**

RAID Controller Modules:	2
RAID Controller Module 0 IP address:	10.0.200.55
Status:	Online
RAID Controller Module 1 IP address:	10.0.200.52
Status:	Online
Storage Array WWN:	6842B2B00058D97E000000004E28234E
Chassis Serial No.:	1234567
Firmware:	08.20.08.60
NVSRAM:	N2701-820890-004
- Hardware:**

Enclosures:	1
Physical Disks:	12
Physical Disk Type:	SAS
Hot Spares:	0
In Use:	0
Stand by:	0

The bottom of the interface features a 'Recent Tasks' table with columns for Task Name, Target, Status, Initiator, Queued For, Start Time, Completion Time, and Server. The table is currently empty.

Figure 31. Storage Array Summary tab

Summary view general information

The **Summary view** tab provides general information about the select storage array in the Storage Array Information portlet. The details displayed in this area include:

- Number of RAID controller modules
- RAID controller module IP addresses
- RAID controller module status

- Storage array WWN
- Storage array chassis serial number
- Storage array firmware version
- Storage array NVSRAM version


The Summary view tab also provides general information on the selected storage array's physical disk configuration under the Hardware portlet, which include:

- Number of expansion enclosures
- Number of physical disks
- Type of physical disks used
- Number of hot-spares defined
- Number of hot spares in-use
- Number of hot spares in stand-by

Recovery Guru information

The Recovery Guru information displays information about issues that are currently affecting the selected storage array. This information includes the following:

- Summary of issues
- Detail of issues
- Recovery Procedures

 **NOTE:** The recovery procedures are written to be applied from in MD Storage Manager and may not be available in the MD vCenter Plug-in. You can resolve some issues from in the plug-in, but most you have to apply from the MD Storage Manager.

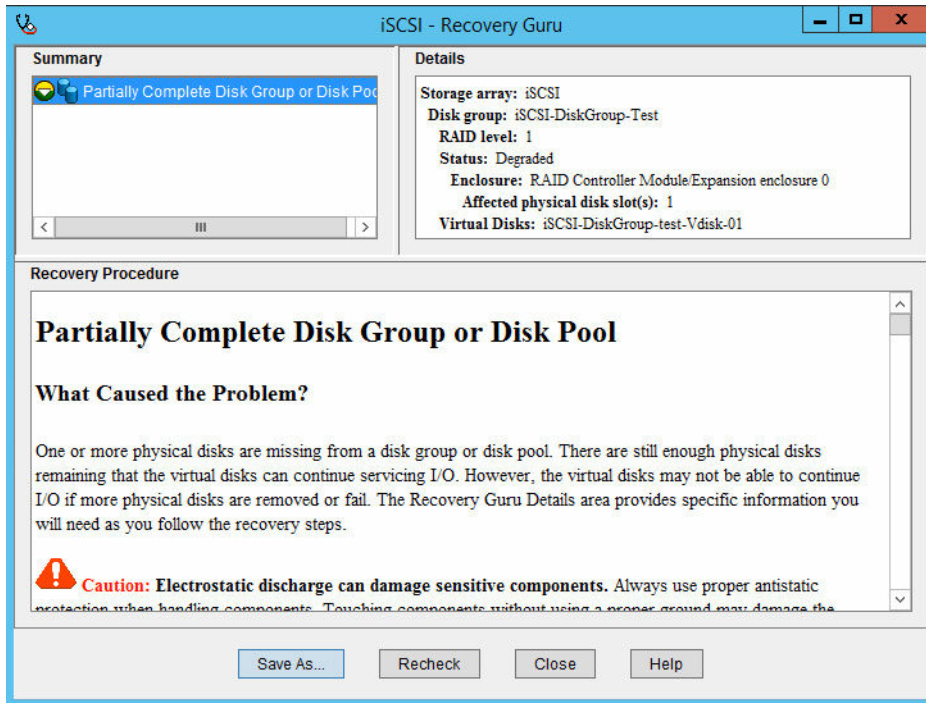


Figure 32. Recovery Guru information window

Selected storage array Manage tab

The Manage tab provides for management of the selected storage array. In this tab, you can select one of the following views:

- [Virtual Disks view features](#)
- [Mappings view features](#)
- [Virtual Disk Copy view features](#)
- [Snapshots view features](#)
- [Remote Replication view features](#)
- [Remote Replication \(Legacy\) view features](#)

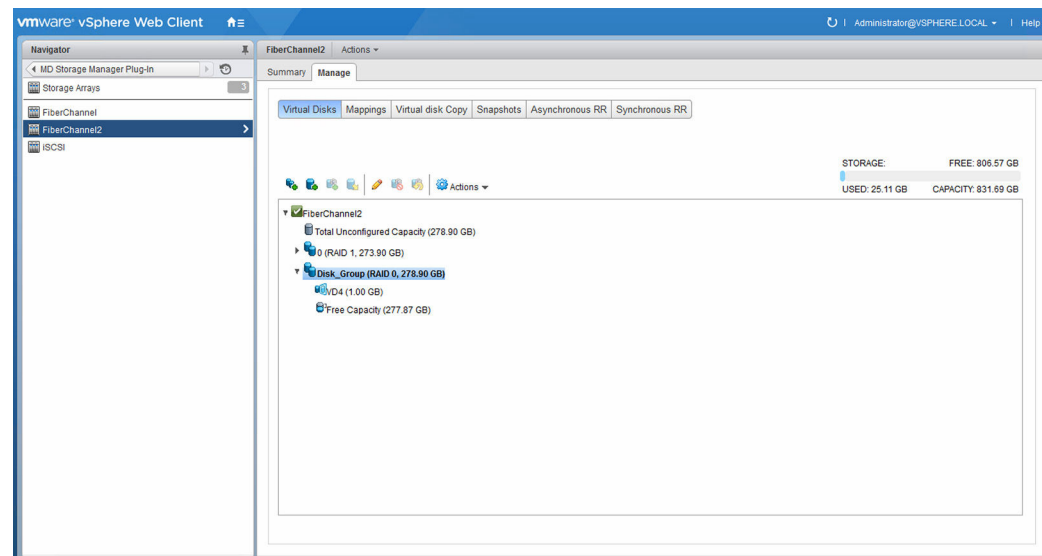


Figure 33. Manage view tab

Virtual Disks view features

When you click the **Virtual Disks** button, a page displays logical view of the storage array showing how storage capacity is allocated. This view allows you to create dynamic disk pools, legacy disk groups, and virtual disks. This view also provides the ability to manage existing disk pools, disk groups, and virtual disks along with creating legacy snapshots of virtual disks. You can create new virtual disk on either a dynamic disk pool or on a disk group.

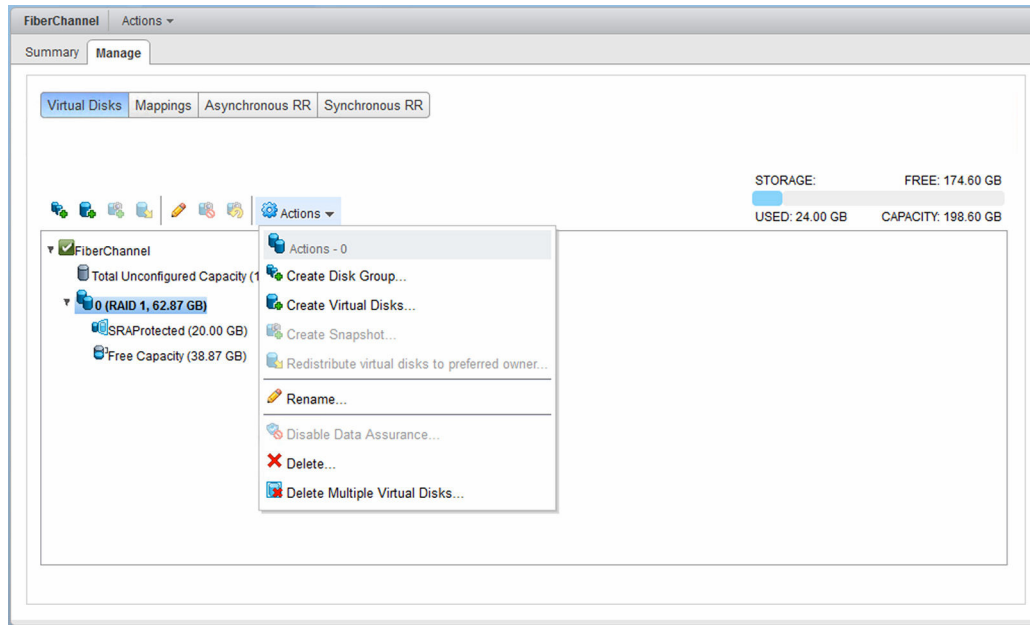


Figure 34. Storage array virtual disks view

- [Create Disk Group](#)
- [Create Virtual Disks](#)
- [Create Snapshot](#)
- [Redistribute Virtual Disk](#)
- [Rename](#)
- [Disable Snapshot](#)
- [Recreate Snapshot](#)

Additional options available from the **Actions** drop-down menu include:

- [Disable Data Assurance](#)
- [Delete](#)
- [Delete Multiple Virtual Disks](#)

Create Disk Group

The Create Disk Group command opens a wizard to help you in creating a new disk group. During this process, you must select the available free physical disks, the physical disks that make up the new disk group, and the RAID level.

The disk group wizard has five filtering options to help guide the creation of a new disk group. The first filter allows filtering physical disks by capacity. This drop-down menu displays a list of all physical disk capacities in the storage array. Select the size of the physical disk by which to filter. The second filter option is to filter by physical disk speed (RPM). This drop-down menu displays a list of all physical disk speeds detected in the storage array. Select the physical disk speed of the new disk group to apply filter.

The other three filter options allow for enforcement of tray loss protection (TLP), drawer loss protection (DLP), and Data Assurance (DA). By selecting these options, the list of available physical disks is reduced to allow for TLP, DLP, or DA during the disk group creation process. TLP and DLP allow for a complete

physical disk enclosure or complete drawer failure without failing the virtual disk(s) in the disk group. DA provides data integrity checking between the RAID controller module to the physical disk, ensuring data is written to disk correctly.

Create Disk Group/Disk Pool

Name:

RAID Level: Select at least 1 physical disk.

Physical Disk Type: Physical Disk Size: Physical Disk Speed:

Filter for TLP Filter for Data Assurance

Capacity: 67.87 GB
Physical Disk Count: 1
Enclosure Loss Protection: No
Data Assurance capable: No

<input type="checkbox"/>	Enclosure	Slot	RAID 1/10/10 Partner	Capacity	Speed (rpm)	Security Capable/Enabled	Data Assurance Capable
<input type="checkbox"/>	0	2	-	67.87 GB	15,000	No / No	No
<input checked="" type="checkbox"/>	0	3	-	67.87 GB	15,000	No / No	No

OK Cancel

Figure 35. Create Disk Group dialog box

Selecting physical disk in the table view updates the Capacity information in the upper right corner of the page showing the final capacity for the new disk group or disk pool.

NOTE: Review [Defining virtual disks for vsphere](#) and [Virtual disk decision-making schemes](#) to best configure the MD Storage Manager for VMware vSphere environments.

Create Disk Pool

Dynamic Disk Pools (DDPs) are a feature of firmware versions 7.83 and later that provide for highly redundant and scalable RAID architecture, also known as Controlled, Scalable, Decentralized Placement of Replicated Data (CRUSH). This technology is used in place of traditional disk groups. Release 3.0 supports creation, management, and deletion of DDPs on the MD Storage Manager storage arrays.

To create a new DDP, click the **Create Disk Group** icon and select **Disk Pool** from the RAID level drop-down menu. Select the physical disks to include in the disk pool.

NOTE: You must select a minimum of 11 physical disks to create a Dynamic Disk Pool.

Create Virtual Disks

Before creating a virtual disks that can be used by vSphere, you must select an existing disk pool with free disk space, select an existing disk group with free disk space, create a new disk group from unconfigured disk space, or create a new disk pool from unconfigured disk space.

To create a new virtual disk or virtual disks, click the **Create Virtual Disk** icon and perform the following task:

New virtual disk on a disk group

1. Click the **Create Virtual Disk** icon.
The **Create Virtual Disks** wizard is displayed.

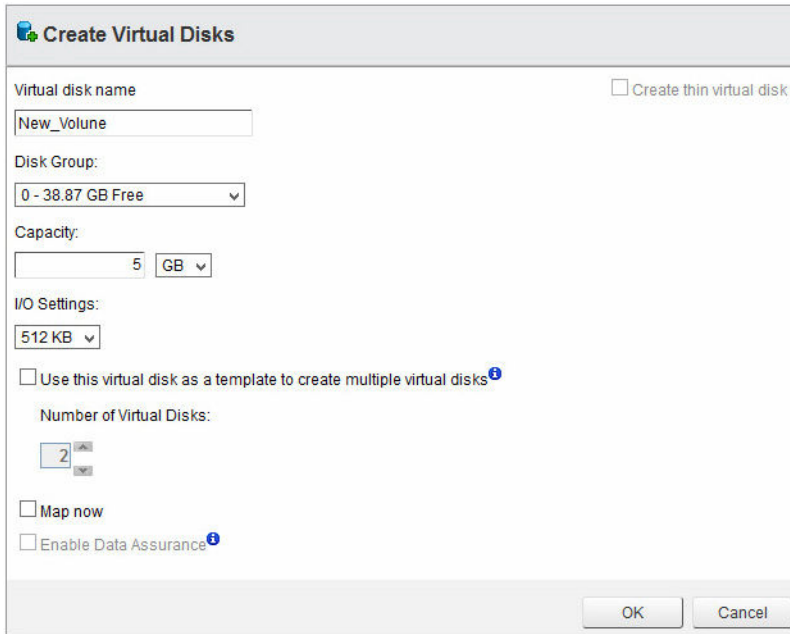


Figure 36. Create Virtual Disk dialog box

2. In the **Name** box, type the disk name.
3. From the disk space drop-down menu, select a disk group to use for the new virtual disk.
4. In the **Capacity** box, type the disk space of the new disk, and select the modifier from the drop-down menu.
5. In the **I/O Settings** area, select the segment size for the new disk.
6. (Optional) Select the check box if multiple disks are required, and then select the number of disks to create.
7. (Optional) Select the **Map now** check box if the new virtual disks must be mapped immediately to a host or host group.
8. (Optional) Select the **Enable Data Assurance** check box to enable DA for the new virtual disks.
9. Click **OK**.

New virtual disk on a disk pool

Creating virtual disks on a disk pool is similar to creating on a legacy disk group, except I/O settings are dictated by the DDP. Also, creation of thin provisioned virtual disks is allowed on DDPs. To create a fat provisioned virtual disk, repeat steps for New Virtual Disk on a Disk Group, skipping I/O settings. To create a thin provisioned virtual disk, perform the following task:

1. Click the **Create Virtual Disk** icon.
2. In the **Name** box, type the virtual disk name.
3. From the **Disk Group or Disk Pool** drop-down menu, select a disk pool to use for the new virtual disk.



4. In the **Size** box, type the size of the new virtual disk, and select the rate from the drop-down menu.
5. Select the **Create thin virtual disk** check box.
6. (Optional) Select the **Map now** check box if the new virtual disks must be mapped immediately to a host or host group.
7. (Optional) Select the **Enable Data Assurance** check box to enable DA for the new virtual disks.
8. Click **Next**.

Figure 37. Create Virtual Disk - Thin virtual disk Capacity Settings

9. In the **Physical Capacity** box, type the initial disk space for the thin provisioned virtual disks (multiple of 4 GB).
10. In the **Maximum Expansion Capacity** box, type the maximum disk space required for the thin provisioned virtual disks.
11. Click **Finish**, or **Next** if **Map now** option was selected.

Legacy Snapshots

When the Snapshot premium feature is enabled on the storage array and a valid base virtual disk is selected, the **Create Snapshot** option is enabled. This feature allows you to create a legacy snapshot of the base virtual disk that is selected. To create a new version snapshot by using point-in-time copy, see [Snapshots view features](#).

-  **NOTE:** Legacy snapshots are not allowed on thin provisioned virtual disks.
-  **NOTE:** Legacy snapshots are not supported on virtual disks residing on a DDP. To create a point-in-time snapshot of these virtual disks, see [Snapshots view features](#).

Create Snapshot

The Snapshot commands in the **Virtual Disks** view allow for management of the legacy snapshot feature. To create a legacy snapshot, perform the following task:

1. Highlight the base virtual disk and click **Create Snapshot**.

The **Create Snapshot** wizard is displayed.

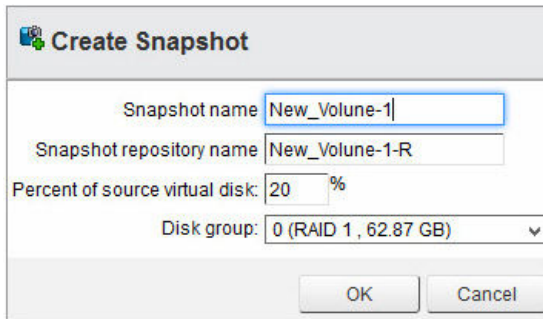



Figure 38. Create a snapshot dialog box

- **Snapshot name:** the name of the new snapshot virtual disk.
 - **Snapshot repository name:** the name of the new repository virtual disk.
 - **Percent of base virtual disk:** the percentage of the base virtual disk to use for the repository.
 - **Disk group:** the name of the disk group in which to place the repository virtual disk.
2. Enter the parameters to be used for the snapshot in the **Create a snapshot** wizard.
 3. Select the disk group that you want to use for the snapshot repository from the drop-down menu.
 4. Click **OK**.

 **NOTE:** When the size of the snapshot exceeds the percentage of the base virtual disk, the snapshot fails. The snapshot is no longer available for use until it is reestablished by recreating it (see [Recreate Snapshot](#)).

Disable Snapshot

To temporarily deactivate a snapshot so that you can use it again later, highlight the snapshot virtual disk in the virtual disks tree, and click the **Disable Snapshot** icon. The snapshot process stops, but the relationship remains between the snapshot, the base virtual disks, and the repository virtual disks.

Recreate Snapshot

To reestablish a deactivated snapshot or refresh an existing snapshot, click **Recreate Snapshot**, and then click the **OK** button to confirm the operation. A new snapshot of the base virtual disk is created.

 **NOTE:** Recreating a snapshot disables the original snapshot before the new snapshot is created.

Redistribute Virtual Disk

The MD vCenter Plug-in supports redistribution of storage array virtual disks based on their preferred RAID controller module ownership. Typically during ESXi rescan operations, virtual disk ownership is transferred to the non-preferred RAID controller module causing the storage array to become non-optimal. By redistributing the virtual disks to their preferred RAID controller module owner, resolves the non-optimal condition and balance the I/O loads across the storage array RAID controller module. If all the storage array virtual disks are already located on their preferred RAID controller module, the **Redistribute Virtual Disk** icon is unavailable.


Rename


The Rename feature allows for renaming the selected object from the **VirtualDisk** tree view.

1. Select the object to be renamed, and then click the **Rename** icon.
2. Type new name for the object.
3. Click **OK** to apply the change.

Disable Data Assurance

The Disable Data Assurance allows for disabling data assurance (T10 PI) on the selected virtual disk. You can only disable Data Assurance (DA) on virtual disks residing in a virtual disk group and not on virtual disks residing in a disk pool. Select the virtual disk to deactivate DA on, and then click the **Disable Data Assurance** icon from the **Actions** drop-down menu. No confirmation window is displayed during this operation.


 **NOTE:** After DA has been deactivated on a virtual disk, it cannot be reenabled. The virtual disks must be recreated to enable DA.

 **NOTE:** You can only disable DA on a virtual disk without dependencies such as legacy snapshots or remote replication relationships.

Delete

The Delete command provides the ability to delete the selected object (virtual disk, disk group, disk pool, or snapshot). You can only delete objects that are not participating in remote replication groups, snapshot groups, or remote replications.

1. Select the object that you want to delete, and then click the **Delete** command from the **Actions** drop-down menu.
2. Click **OK** to confirm deletion of the object (click **Cancel** to cancel deletion of object).

 **NOTE:** You cannot delete some objects until all child objects are deleted first; such as DDPs or virtual disks in a replicated relationship. Delete or remove member objects before deleting base virtual disk, disk group, or disk pool.

Delete Multiple Virtual Disks

The Delete Multiple Virtual Disks command allows for deleting multiple virtual disks at one time. To use this feature, perform the following task:

1. Select the storage array object from the virtual disks tree view.
2. Select the **Delete Multiple Virtual Disks** command from the **Actions** drop-down menu. The **Delete Multiple Virtual Disks** wizard is displayed.

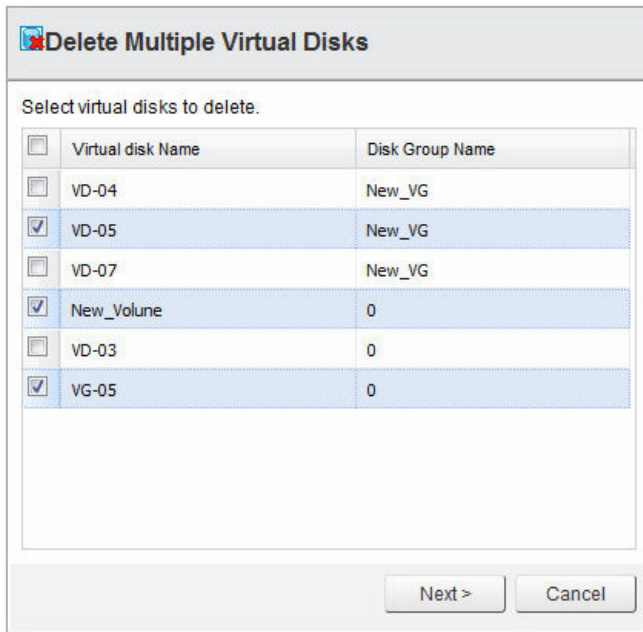




Figure 39. Delete Multiple Virtual Disks wizard

3. Select the virtual disks that you want to delete by selecting the check box next to the virtual disk name.
4. Click **Next** after all virtual disks are selected.
A confirmation message dialog box is displayed.
5. If the information about the virtual disks you want to delete is correct, click **Finish** to delete the selected virtual disks.

 **NOTE:** Because of SDK limitation, you can delete a maximum of 80 virtual disks at a time by using this command.

 **NOTE:** You must remove virtual disks participating in a remote replication relationship from the Remote Replication Group (RRG) before you can delete them.

Mappings view features

The Mappings view enables you to manage how storage array virtual disks are presented to the ESXi hosts. This view also provides the ability to manage hosts and host groups on the selected storage array. The following commands are available from this view:

- [Add Host](#)
- [Add Host Group](#)
- [Add Mapping](#)
- [Rename](#)
- [Remove](#) (Only available from the **Actions** drop-down menu.)

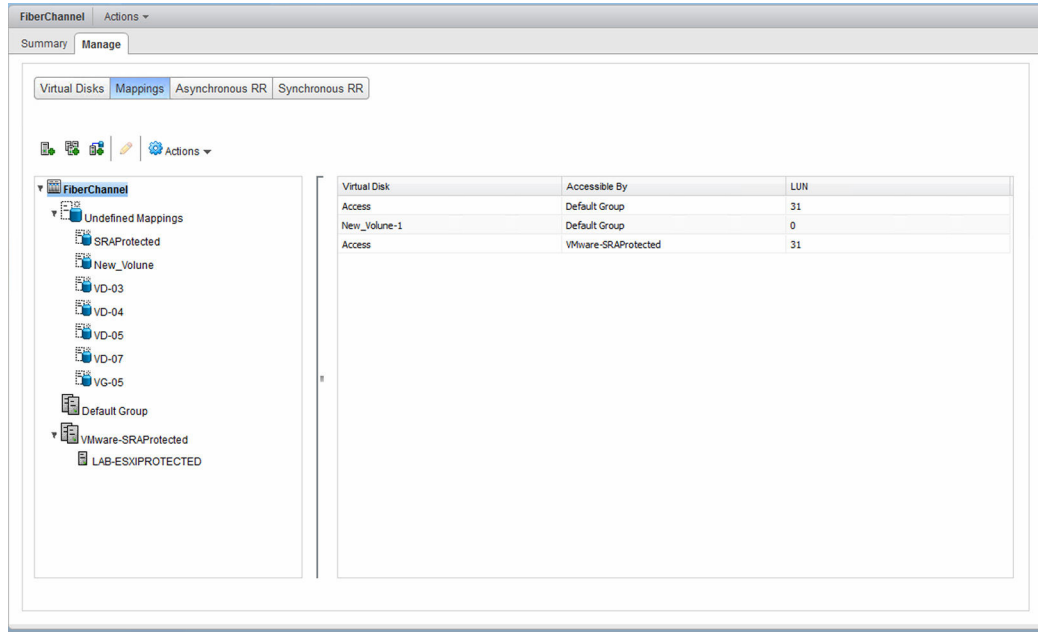


Figure 40. Storage array mappings view

Add Mapping

To present a virtual disks to an ESXi host or host group, perform the following task:

1. Click the **Add Mapping** icon.

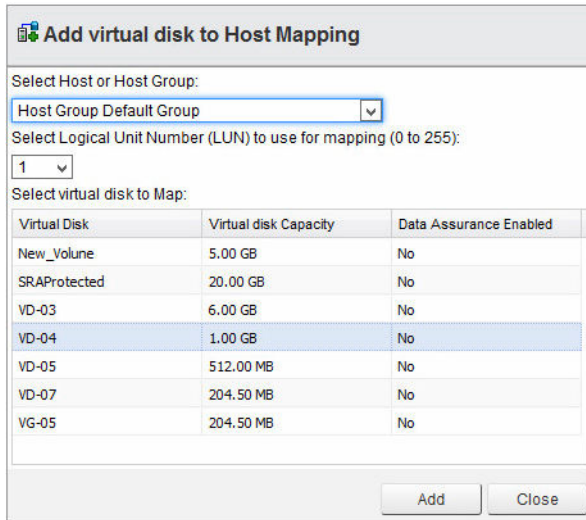



Figure 41. Add virtual disk to Host Mapping


2. Select host or host group. The virtual disk is displayed from the drop-down menu.
3. Accept the default logical unit number (LUN) or change to required LUN number for the new mapping.
4. Select the virtual disk to be mapped.
5. Click **Add**.

- Repeat steps 3–5 for additional virtual disks to present or click **Close**.

 **NOTE:** When your storage array uses multiple groups of HBAs per ESXi host, balance the new virtual disks across all hosts or host groups. Do not add all the virtual disks to a single host or host group because I/O balancing cannot occur if you do.

Rescan Storage Adapters

After you map the virtual disks to the ESXi hosts, you must rescan the storage adapters on the ESXi host to detect the new storage virtual disks. This action is accomplished under the **Manage** tab in the **Hosts and Clusters** view. Select **Storage** for the ESXi host that you want to configure, and then click the **Rescan all Storage Adapters** icon.

 **NOTE:** You may need to run the Rescan, from vCenter, twice to detect all of the new storage virtual disks that have been mapped to the ESXi host.

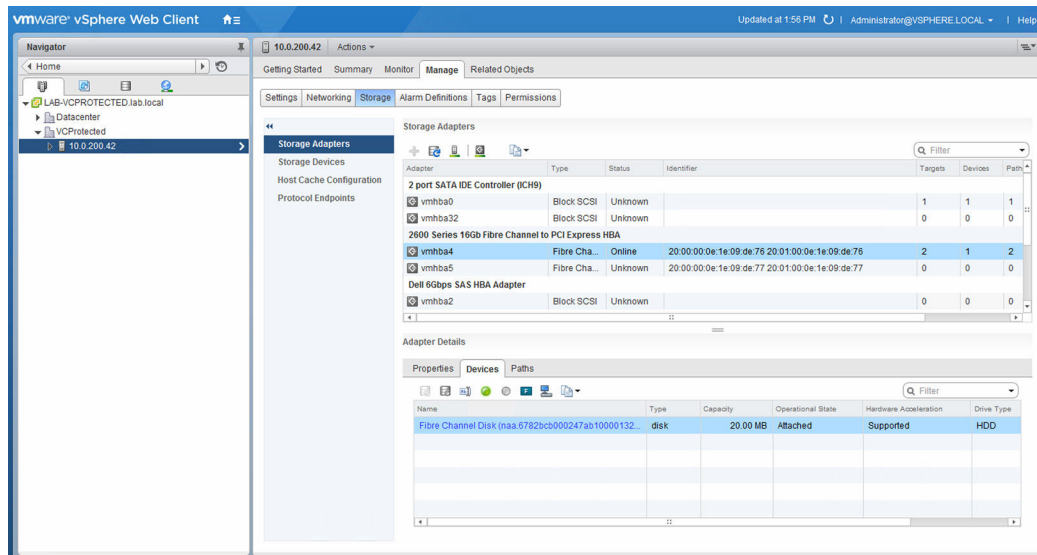


Figure 42. Storage Storage Adapters

- From this view, you can also verify that the correct number of paths have been configured by clicking one of the devices listed under the storage adapter.
- Select the **Paths** tab to view the details of the selected device. For round robin PSP, you must see four active connections with two denoting I/O. For most recently used PSP, you must see either four active connections with one channel showing I/O or two active connections and two standby connections and one of the active channels showing I/O.
- To change the PSP method for a device, select the **Properties** tab under **Device Details** pane, scroll down to the **Edit Multipathing** button. Click the button and select **path selection policy** to apply to the device from the drop-down menu. Click **OK**.

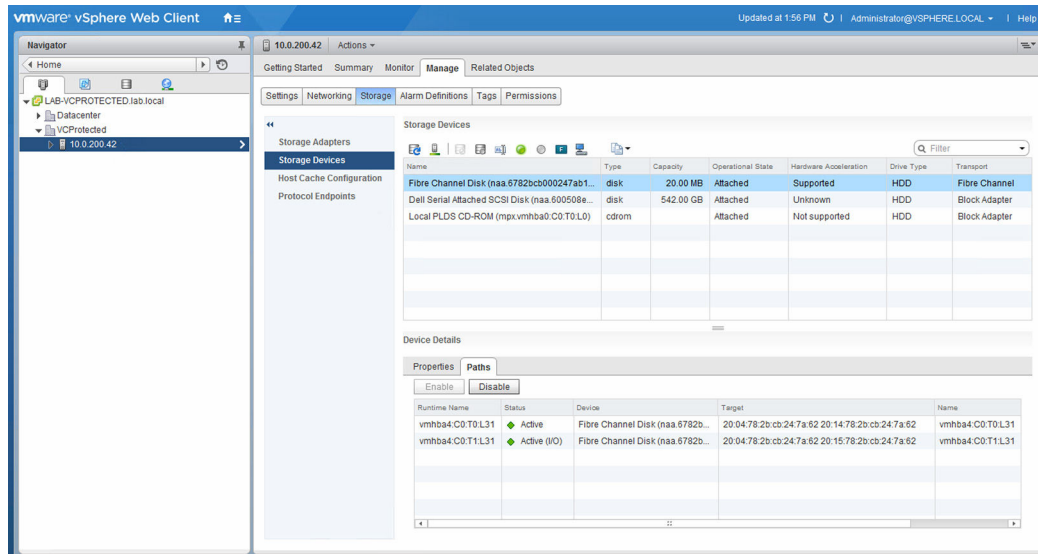



Figure 43. Storage Details path view

Add Host

The Add Host command enables you to define hosts that are used to present virtual disks. To add a new host, perform the following task:

1. Select a host group to add a new host to and click the **Add Host** icon.
2. Enter the name for the new host.
3. Select the host type (VmwTPGSALUA for ESXi host) from the drop-down menu.
4. Select the interface type, and then click **Next**.
5. Select the available host port adapters' identifiers for the new host that you want to add.
6. Click the down arrow to move the host port identifier to the lower window. (Repeat for dual port configuration).

 **NOTE:** Only unconfigured host port identifiers are displayed in the upper pane of the **Add Host** wizard.

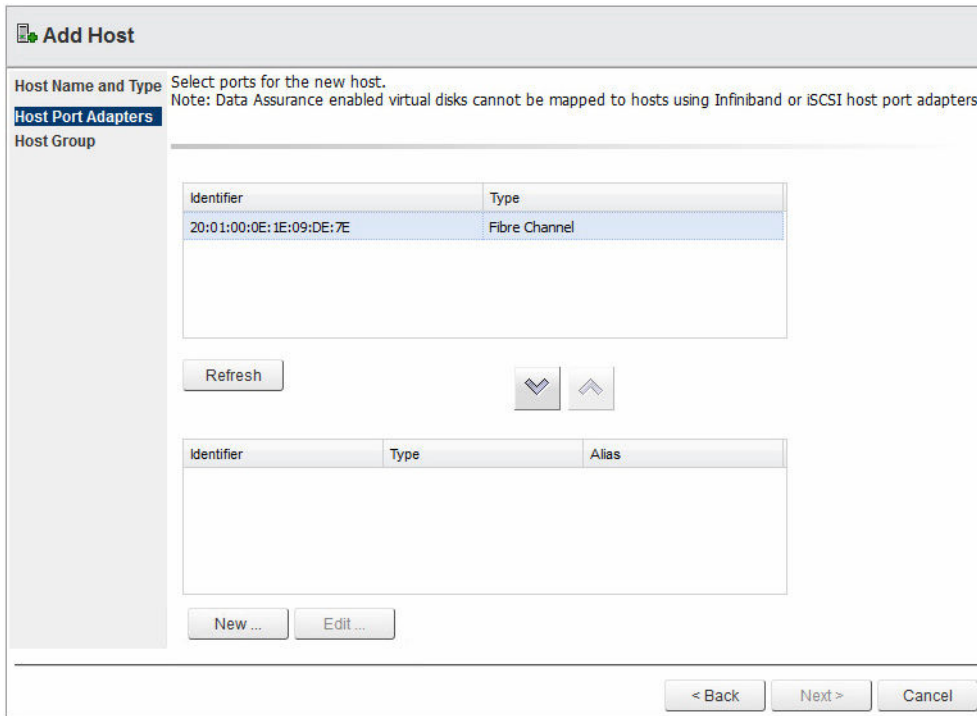


Figure 44. Host Port Adapters wizard

7. Click **Next**.
8. Select the option button to indicate if this host will be added to a host group (shared virtual disk mappings).
9. If the host will be added to a host group, indicate the option button for either a new host group or existing host group.
10. Enter a new host group name or select an existing host group from the drop-down menu.
11. Click **Finish**.

Add Host Group

To create a new host group and to share LUN mappings between hosts, perform the following task:

1. Click **Add Host Group**.

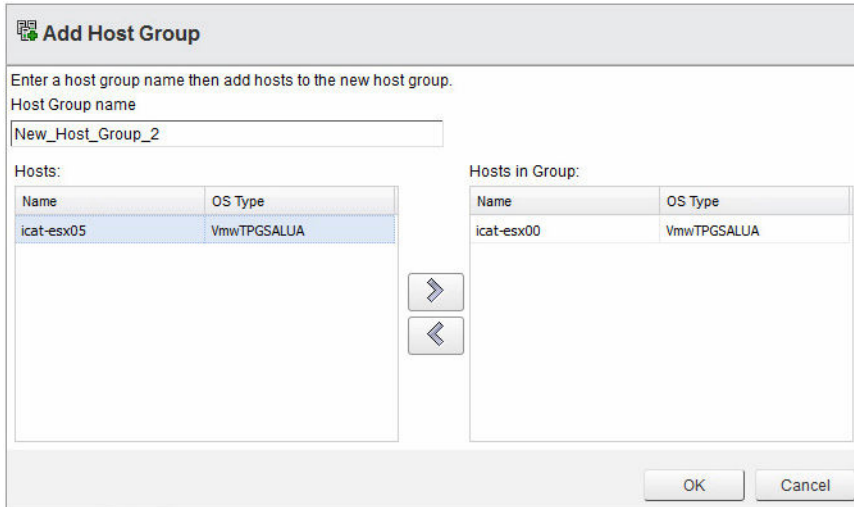



Figure 45. Add Host Group wizard

2. Type the name for the new host group.
3. Select the names of the hosts that you want to add to the new host group.
 -  **NOTE:** Only hosts that are currently in the default host group are listed in the available hosts list.
4. Click the right arrow to add the hosts to the new host group.
5. (Optional) Repeat steps 3 and 4 for adding more hosts.
6. Click **OK** after you add all hosts to the new host group.

Rename

The Rename command allows you to rename a host or host group. Select the host or host group that you want to rename, and then click the **Rename** icon. Type the new name for the object, and then click **OK**.

Remove

The Remove command allows you to remove the selected object (host or host group) from the storage array. Select the host or host group that you want to remove, and then click the **Remove** icon from the **Actions** drop-down menu.

Virtual Disk Copy view features

The **Virtual Disk Copy** view enables you to manage virtual disk copies on the selected storage array. This tab also displays existing virtual disk copy pairs along with their current status. Virtual disk copy provides a method to copy all existing data from a source virtual disk to a target virtual disk. Unlike snapshot, the target virtual disk, after completion, does not rely on data from the source virtual disk; it contains all data from the original virtual disk and may be mapped to alternate host(s) for data mining or recovery purposes without affecting the source virtual disk data. The following commands are available from this view:

- [Create Virtual Disk Copy](#)

- [Stop Virtual Disk Copy](#)
- [Recopy](#)
- [Change Settings](#)
- [Remove Copy Pair](#)

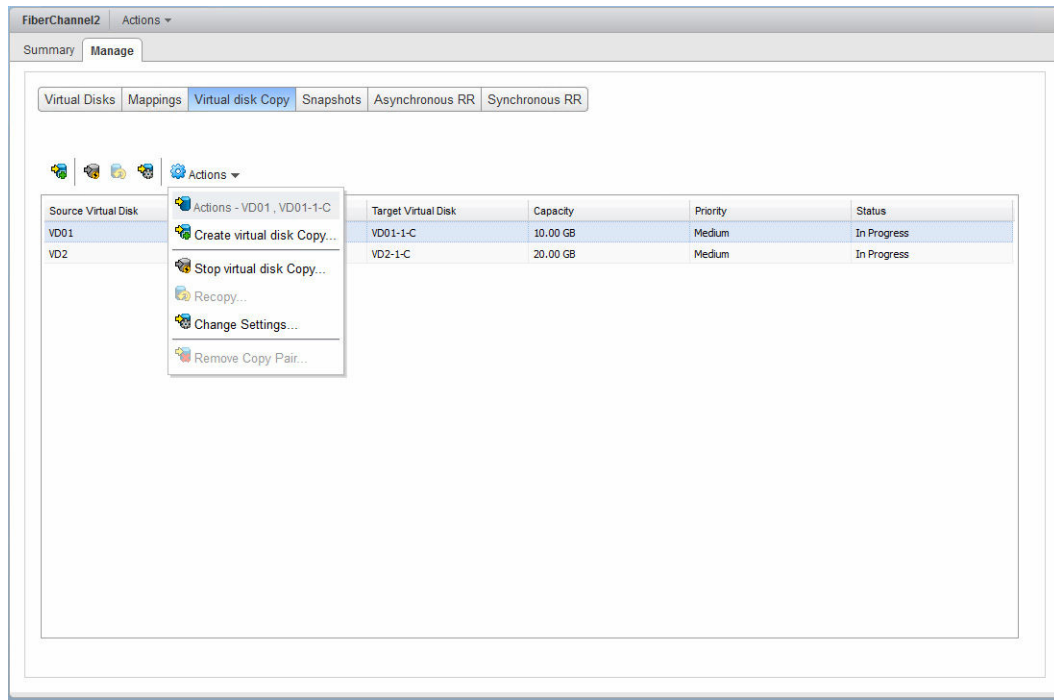


Figure 46. Virtual Disk Copy view tab

Create Virtual Disk Copy

1. To create a new virtual disk copy, click **Create Virtual Disk Copy** .
The **Create Virtual Disk Copy** wizard is displayed.

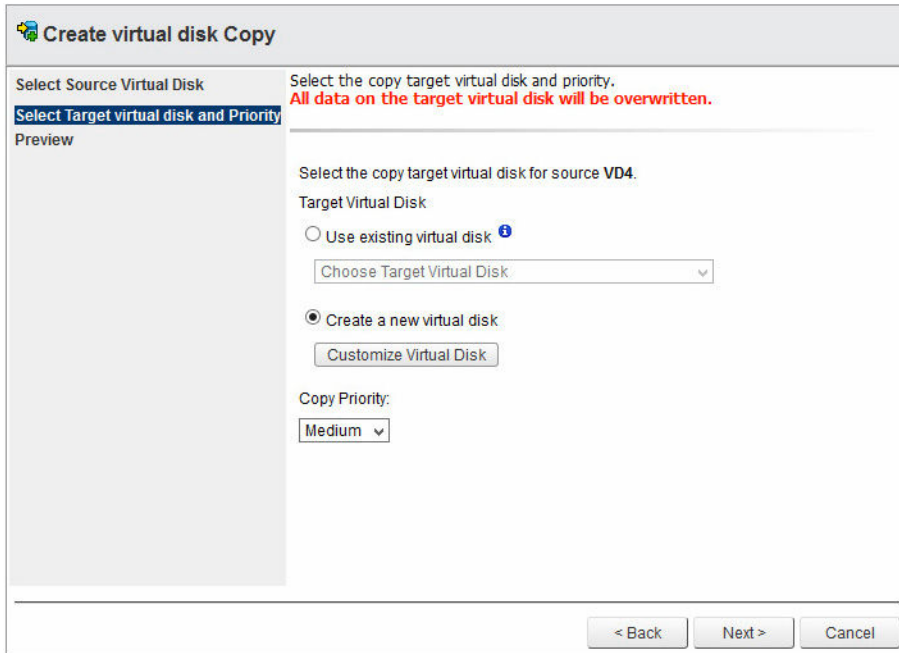




Figure 47. Select source Virtual Disk

-  **NOTE:** While the virtual disk copy is being established, a snapshot of the source virtual disk is created which is used to create the virtual disk copy from. This ensures that the data is consistent at the time the virtual disk copy was initiated and continued read-write access to the source virtual disk during the copy operation.
-  **NOTE:** Snapshots for virtual disks residing on a disk pool are not supported in this release. Any virtual disk copy using virtual disks on a disk pool is read-only to the host until the 'copy' process is completed.

2. Select the source virtual disk and click **Next**.
3. Click either **Use existing virtual disk** or **Create a new virtual disk**.

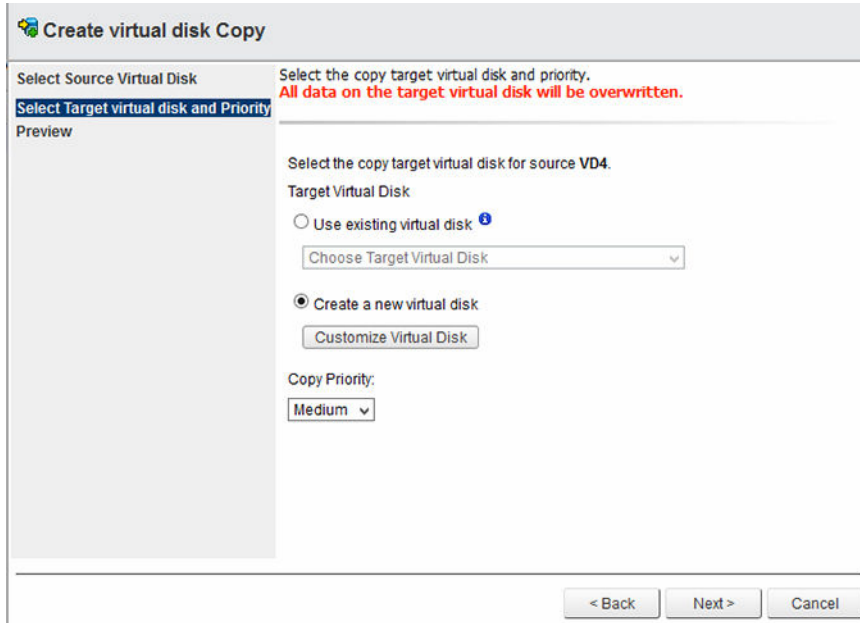


Figure 48. Select target virtual disk and priority

4. Select the copy priority to use while establishing the new virtual disk copy.
5. Click **Next**.
6. Review and verify the virtual disk copy settings and click **Finish** to start the virtual disk copy.

Stop Virtual Disk Copy

The Stop Virtual Disk Copy command stops the current virtual disk copy operation for the selected copy pair. Select a copy pair that is in progress, and then click the **Stop Virtual Disk Copy** icon. A confirmation message is displayed. Click **OK**.

Recopy

The Recopy command recopies all data from the source virtual disk to the target virtual disk, overwriting any existing data on the target virtual disk, for the selected virtual disk copy pair.

All data available on the target virtual disk is overwritten with this option.

1. Select the virtual disk copy pair to use for the recopy.
2. Click **Recopy**.
3. Verify the information in the **Recopy** dialog box, and then click **OK**.

Change Settings

To change the target virtual disk to read-write or change the modification priority, perform the following task:

1. Select an existing virtual disk copy pair from the list.
2. Click the **Change Settings** icon.

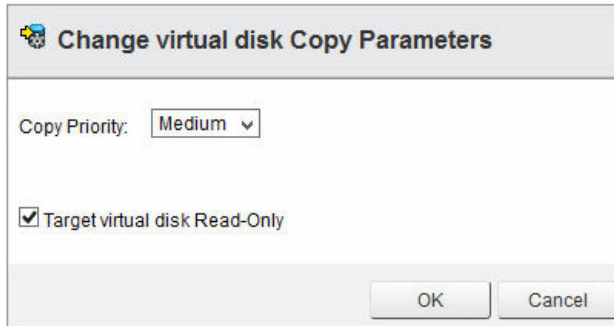


Figure 49. Change virtual disk Copy Parameters

3. From the **Copy Priority** drop-down menu, select the new priority for the virtual disk copy.
4. Clear the **Target virtual disk Read-Only** check box to allow for read-write of the target virtual disk copy.
5. Click **OK**.

Remove Copy Pair

The Remove Copy Pair command removes the relationship of the source and target of a virtual disk copy pair. This command does not remove the target virtual disk or the data residing on the target virtual disk. To remove a virtual disk copy pair relationship, perform the following task:

1. Select the virtual disk copy pair to be removed.
2. Click **Remove Copy Pair** icon from the **Actions** drop-down menu.
3. Click **OK** to remove the virtual disk copy pair or **Cancel**.

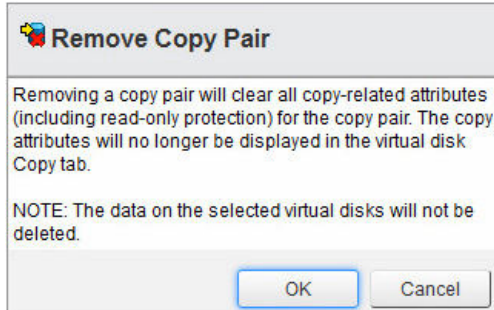


Figure 50. Remove Copy Pair

Snapshots view features

MD storage arrays with controller firmware 7.84 and later support Point-in-Time (PiT) based snapshots. These snapshots provide a PiT image of the base virtual disk that may be used to revert to, or presented to an alternate host as read-only or read-write virtual disk. The following commands are available from this view:

- [Create Snapshot Group](#)
- [Create Snapshot Image](#)
- [Create Snapshot Virtual Disk](#)

- [Delete](#)

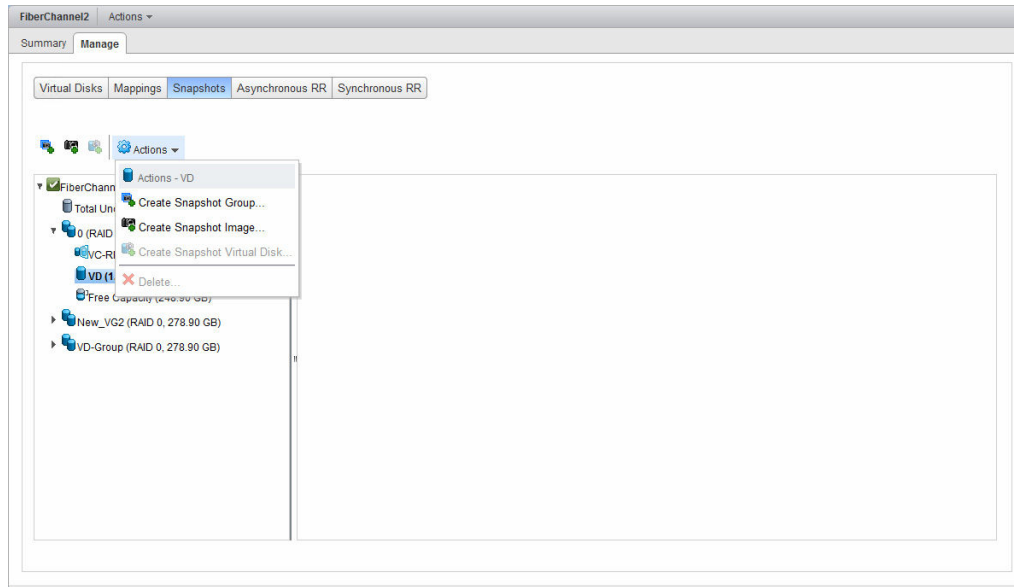



Figure 51. Snapshot view

 **NOTE:** To rollback a snapshot image to the base virtual disk, you must use MD Storage Manager. Image rollback is not currently supported in the MD vCenter Plug-in. You can also use MD Storage Manager to set up scheduled snapshot images automatically.

Create Snapshot Group

A snapshot group is used to hold snapshot images of a storage array virtual disk. To create a new snapshot group, perform the following task:

1. Select the base virtual disk from the **Virtual Disk** tree.
2. Click **Create Snapshot Group**.

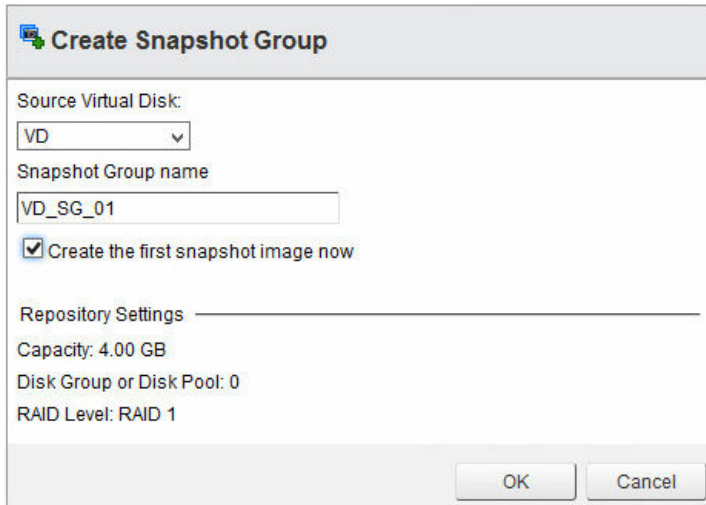


Figure 52. Create snapshot group dialog box

3. Modify the displayed parameters as necessary.
4. Click **OK**.

Create Snapshot Image

A snapshot image is a point-in-time copy of the base virtual disk. After an image is created, you can use it to roll back the base virtual disk to, or you can use it to create a virtual disk from. To create an image, perform the following task:

1. Select the base virtual disk from the virtual disk tree window.
2. Click **Create Snapshot Image**.

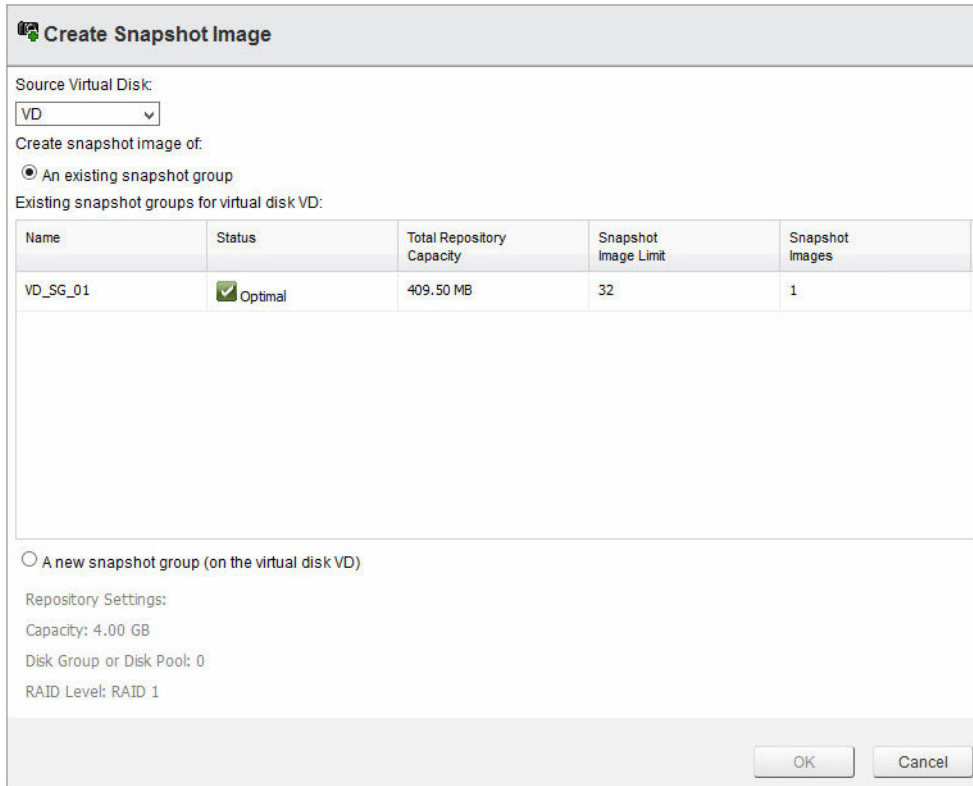



Figure 53. Create Snapshot Image dialog box

3. From the Base virtual disk drop-down menu, select the base virtual disk of the snapshot image.
4. Select an existing snapshot group to use for the new image.
 -  **NOTE:** If this is the first snapshot image for the base virtual disk, a new snapshot group is created if not already manually created.
5. Click **OK**.

Create Snapshot Virtual Disk

A snapshot virtual disk allows for a snapshot image to be mapped to a host or host group for data access. To create a snapshot virtual disk, perform the following task:

1. Select a base virtual disk in the virtual disk tree window that has an existing snapshot group.
2. Click **Create Snapshot Virtual Disk**.

Create Snapshot Virtual Disk

Source Virtual Disk:

Create Snapshot virtual disk of:
 An existing snapshot image

Existing Snapshot Images for virtual disk VD:

Timestamp	Status	Snapshot Group
5/7/15 1:32:45 PM GMT-600	<input checked="" type="checkbox"/> Optimal	VD_SG_01

A new snapshot image (on an existing snapshot group)

Existing snapshot groups for virtual disk VD:

Name	Status	Total Repository Capacity	Snapshot Image Limit	Snapshot Images
VD_SG_01	<input checked="" type="checkbox"/> Optimal	409.50 MB	32	1

Figure 54. Create Snapshot Virtual Disk dialog box

3. Select a snapshot image from the available list of images or select the **A new snapshot image** option, and then click **Next**.
4. In the **Snapshot virtual disk name** box, enter a name for the new snapshot virtual disk.
5. Select the access mode for the snapshot virtual disk.
6. Click **Finish**.

Delete

The Delete command allows for removal of snapshot virtual disks, snapshot images, or snapshot groups depending on the object select. The delete option opens a dialog box of the selected object displaying the leafs of that object. To delete a snapshot object, perform the following task:

1. Expand the base virtual disk from the virtual disks tree window.
2. Select the Snapshot Groups, Snapshot Images, or Snapshot Virtual Disks object.
3. Click **Delete**.

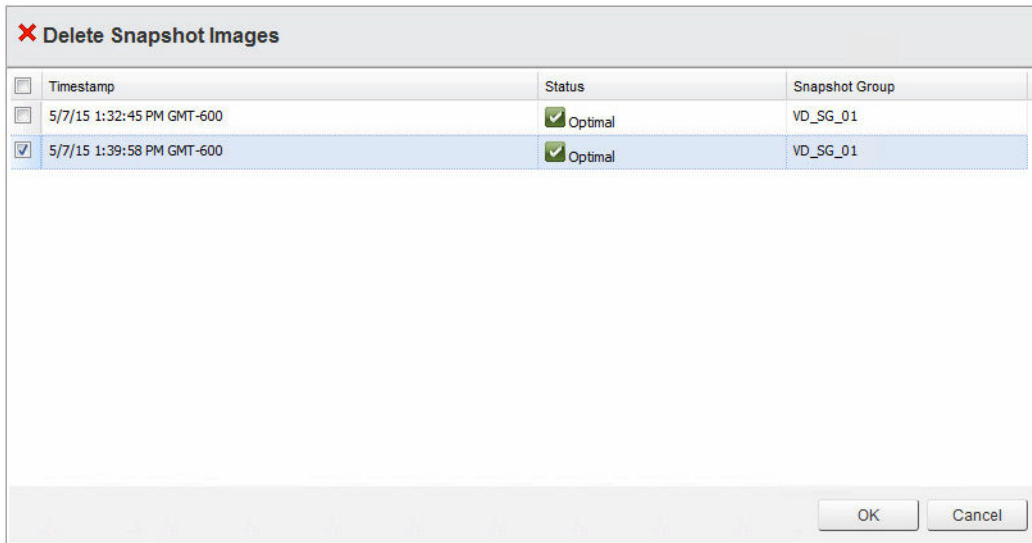


Figure 55. Delete snapshot images

4. Select the check box next to the leaf objects to be deleted.
5. Click **OK**.
6. In the message displayed, click **OK** to delete the object, or click **Cancel** to cancel the operation.

Remote Replication view features

The Remote Replication view feature allows for management of Asynchronous Remote Replication (aRR). aRRs are available on MD storage arrays with controller firmware 7.84 and later. The following commands are available in the **Remote Replication view** tab:

- [Create Replication Group](#)
- [Create Asynchronous Remote Replication Pair](#)
- [Suspend Replication](#)
- [Resume Replication](#)
- [Manual resync](#)
- [Test Replication Communication](#)
- [Change Roles](#)
- [Delete Replication Group](#)
- [Remote Replication Group](#)

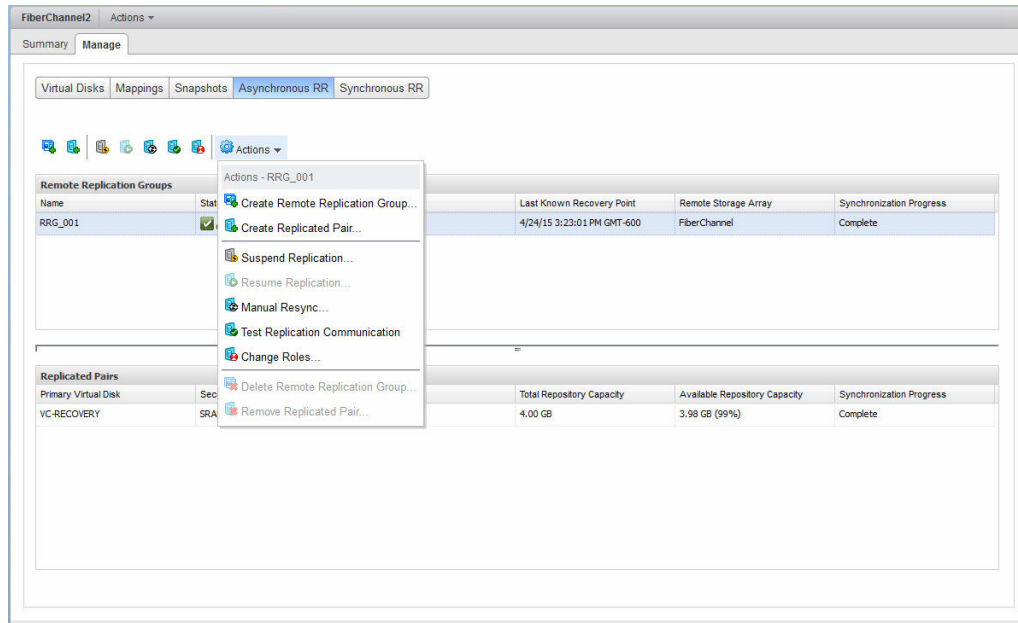


Figure 56. Asynchronous Remote Replication

Asynchronous remote replication (legacy) details

The aRR feature is similar to Remote Replication (RR) by allowing source virtual disks from a primary storage array to be replicated to a target virtual disk on a remote storage array. However, aRR supports both iSCSI and fibre channel connections between the storage arrays and uses point-in-time replication strategy. aRR enables you to manage the synchronization process of creating a consistent data set on a remote storage array.

A remote replication group may contain several replicated pairs that you can manage as one entity. A replicated pair consists of a primary virtual disk and a secondary virtual disk. Both virtual disks contain identical copies of the same data. Write operations are performed to the primary virtual disk and then replicated to the secondary virtual disk based on the RRG synchronization settings.


An RRG defines the synchronization settings for all replicated pairs in the group. Each replicated pair in an RRG shares the same synchronization settings, primary and secondary role, and write mode. You can synchronize all replicated pairs in the RRG at the same time.

A remote replication group is associated with the local storage array and remote storage array in the replicated pair.

- The local storage array performs the primary role in the remote replication group. All virtual disks added to the remote replication group on the local storage array perform the primary role in the replication relationship.
- The remote storage array performs the secondary role in the remote replication group. All virtual disks added to the remote replication group on the remote storage array perform the secondary role in the replication relationship.

Create Replication Group

An RRG is used to group replicated pairs as a single entity and control replication settings for all members of the RRG. A replicated pair may only reside in a single RRG. There is a limit of 4 RRGs per storage array. To create a new RRG, perform the following task:

 **NOTE:** To configure remote replication in the MD vCenter Plug-in, both arrays (local array and remote array) must be added to the MD Storage Manager Plug-in Array Manager. If either array is removed from the Array Manager, any RRGs configured between the two arrays are displayed in the plug-in.

1. Click **Create Replication Group**.

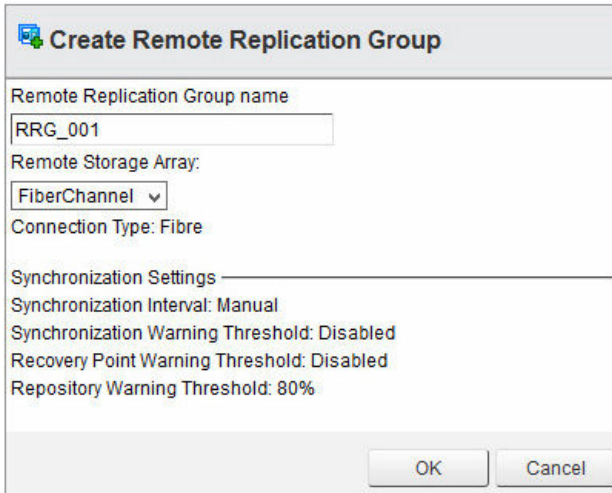



Figure 57. Create Remote Replication Group dialog box

2. In the **Remote Replication Group Name** box, type a unique name of the RRG.
3. Select the remote storage array for the RRG from the **Remote Storage Array** drop-down menu.

 **NOTE:** The **Remote Storage Array** drop-down menu lists only the storage arrays that support selection as the remote storage array.

4. Click **OK**.

Create Asynchronous Remote Replication Pair

The **Create Asynchronous Replication Pair** feature allows for creating an asynchronous replicated pair relationship between a primary virtual disk on the primary array and a secondary virtual disk on the secondary array. To create a new asynchronous replicated pair, perform the following task:

1. In the Remote Replication group table, select an RRG (with primary role) in which to create a replicated pair.
2. Click **Create Asynchronous Replicated Pair**.

The **Create Asynchronous Remote Replicated Pair** dialog box is displayed.

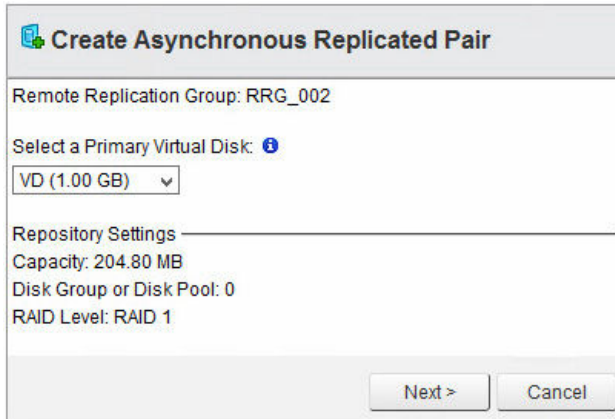


Figure 58. Create Asynchronous Replicated Pair dialog box

3. From the **Select a Primary Virtual Disk** drop-down menu, select the primary virtual disk for the replicated pair.
4. Click **Next**.
5. From the **Select a Secondary Virtual Disk** drop-down menu, select the secondary virtual disk for the replicated pair.
6. Click **Finish**.

Remote Replication Groups					
Name	Status	Role	Last Known Recovery Point	Remote Storage Array	Synchronization Progress
RRG_001	Optimal	Primary	None	FiberChannel	Complete
RRG_002	Initial Sync	Primary	None	FiberChannel	45% Complete

Replicated Pairs					
Primary Virtual Disk	Secondary Virtual Disk	Status	Total Repository Capacity	Available Repository Capacity	Synchronization Progress
VD-03	VD	Optimal	0 Bytes	30.11 MB (Infinity%)	Complete

Figure 59. Initial sync status remote replication groups table and replicated pairs table

Suspend Replication

When replication is suspended, the virtual disks in the replicated pairs cannot synchronize data. The suspend-replication operation must be performed by the storage array in the primary role for the RRG. To suspend replication, perform the following task:

1. Select the RRG in the **Remote Replication Groups** window.
2. Click **Suspend Replication**.
3. Select **Yes, I wish to perform the operation**.
4. Click **OK**.


Resume Replication

You can resume the replication only when all members of the remote replication group are in the **Optimal** status. You can perform the resume operation only by the storage array that has the primary role for the RRG. To resume replication, perform the following task:

1. Select the suspend RRG in the **Remote Replication Group** window.
2. Click **Resume Replication**.
3. Select **Yes, I wish to perform the operation**.
4. Click **OK**.

Manual resync

The Manual resync command forces the immediate resynchronization of the data on all replicated pairs in the RRG. A manual resynchronization must be performed by the storage array that has the primary role for the RRG.

 **NOTE:** You cannot perform a manual resynchronization until the minimum wait time (10 minutes) between synchronizations has elapsed.

To manually synchronize an RRG, perform the following task:

1. Select an RRG in the **Remote Replication Group** window.
2. Click **Manual resync**.
3. Select **Yes, I wish to perform the operation**.
4. Click **OK**.

Test Replication Communication

The Test Replication Communication feature displays statistics between the two storage arrays configured for the RRG. Select the RRG to obtain information, and then click the **Test Replication Communication** icon. The **Test Communication Link** results are displayed.

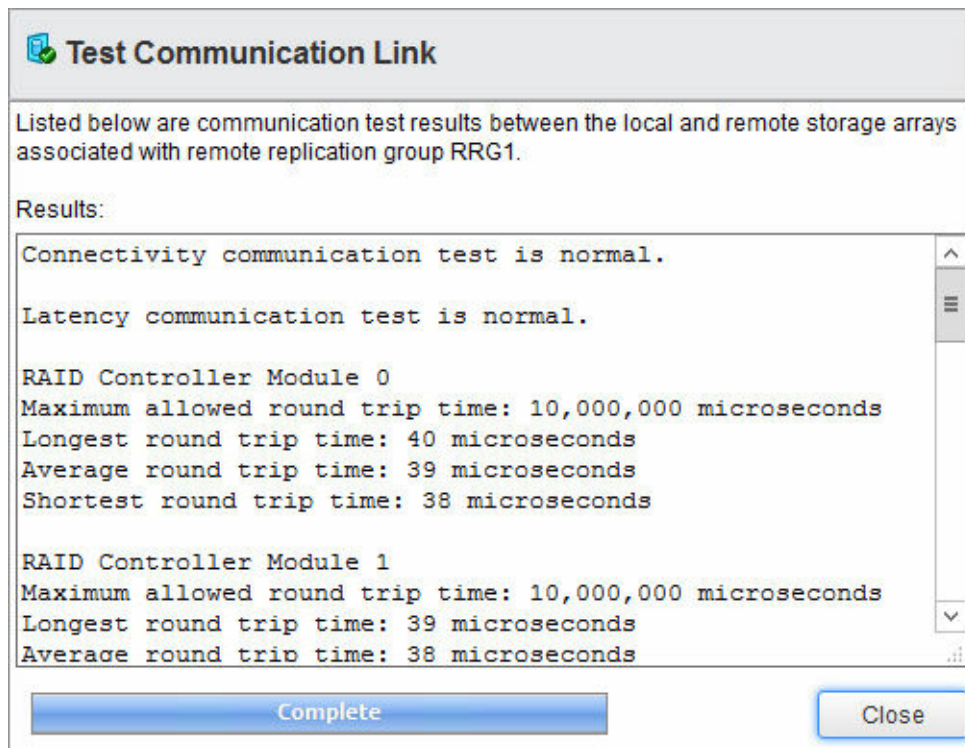



Figure 60. Test Replication Communication results

Change Roles

A Change Roles feature promotes the current secondary replication group to the primary role and demotes the current primary replication group to the secondary role. After roles are changed, hosts mapped to the former primary virtual disks in the RRG no longer have write access to the replicated virtual disks. Hosts in the RRG that was promoted to the primary role now have write access to the replicated virtual disks.

 **NOTE:** If the RRG is not resynchronized, data written to primary virtual disks after the last synchronization is lost and cannot be recovered.

To change roles, perform the following task:

1. Select the RRG in the **Remote Replication Group** window.
2. Click **Change Roles**.
The **Confirm Change** dialog box is displayed. The **Resynchronize replication group now** check box is selected by default. To prevent the resynchronization, clear the check box.
3. Select **Yes, I wish to perform this operation**. Click **OK**.
The **Remote Replication Group** window shows the role change for the RRG. In the **Remote Replicated Pairs** window, the primary and secondary virtual disks in the RRG have switched roles.

Delete Replication Group

You can also delete Remote Replication Groups after all replicated pairs have been removed from the RRG. After you remove all of the replicated pairs, select the **Delete Replication Group** option from the **Actions** drop-down menu.

Remote Replication Group

Removing a replicated pair breaks the relationship between the primary virtual disk and the secondary virtual disk. Both virtual disks are return to standard virtual disk status. No data is deleted from either the source virtual disk or the target virtual disk. To remove a replicated pair, perform the following task:

1. In the **Remote Replication Group** table, select the remote replication group from which to remove the replicated pair.
2. Select the replicated pair to be removed from the **Replicated Pairs** table.
3. Select **Remove Replicated Pair** command from the **Actions** drop-down menu.

The **Remove Remote Replicated Pair** dialog box is displayed.

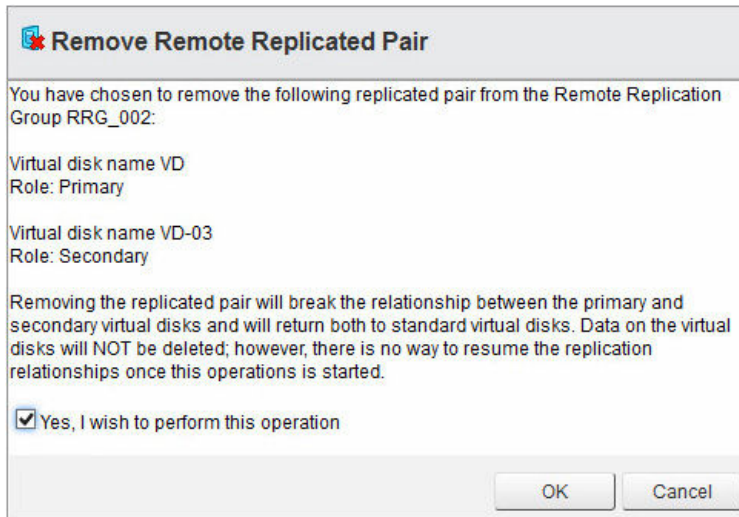


Figure 61. Remote Replication Group pair dialog box

4. Select **Yes, I wish to perform the operation**.
5. Click **OK**.
The replicated pair is removed from the **Replicated Pairs** table.

Remote Replication (Legacy) view features

When the Remote Replication (Legacy) premium feature is enabled on the storage array, the **Remote Replication (Legacy)** tab appears in the MD vCenter Plug-in. From this tab, existing remote replication (Legacy) pairs are displayed along with the Commands area, which allows the following commands:

- [Create Remote Replication \(legacy\)](#)
- [Suspend remote replication \(legacy\)](#)
- [Resume remote replication \(legacy\)](#)

- [Change Replication Settings](#)
- [Change Replicated Roles](#)
- [Test Replication Communication](#)
- [Remove Replicated Pairs](#)

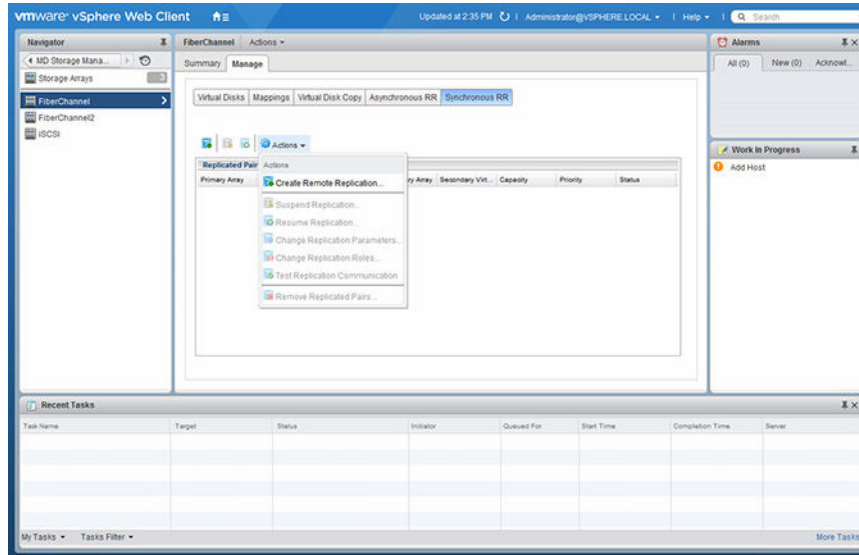



Figure 62. Remote Replication (Legacy) view

Create Remote Replication (legacy)

The Remote Replication (Legacy) command is used to establish a remote replication (legacy) between two storage arrays connected using fibre channel. To establish a new remote replication, perform the following task:

 **NOTE:** To create a remote replication (legacy), both the local and the remote storage arrays must be added to the Array Manager view.

1. Select the **Create Remote Replication (Legacy)** command.
2. Review the **Introduction** wizard instructions, and then click **Next**.
3. Select the primary virtual disk for the replication relationship, and then click **Next**.
4. From the drop-down menu, select the remote storage array for the replication.
5. From the drop-down menu, select the secondary virtual disk to be the target of the primary virtual disk.
6. Select the write mode for the remote replication, and then click **Next**.
7. Select resynchronization method to use.
8. From the drop-down menu, select the synchronization priority for the replication, and then click **Next**.
9. Review the **Confirmation** page, and then click **Finish** to establish the replicated relationship.

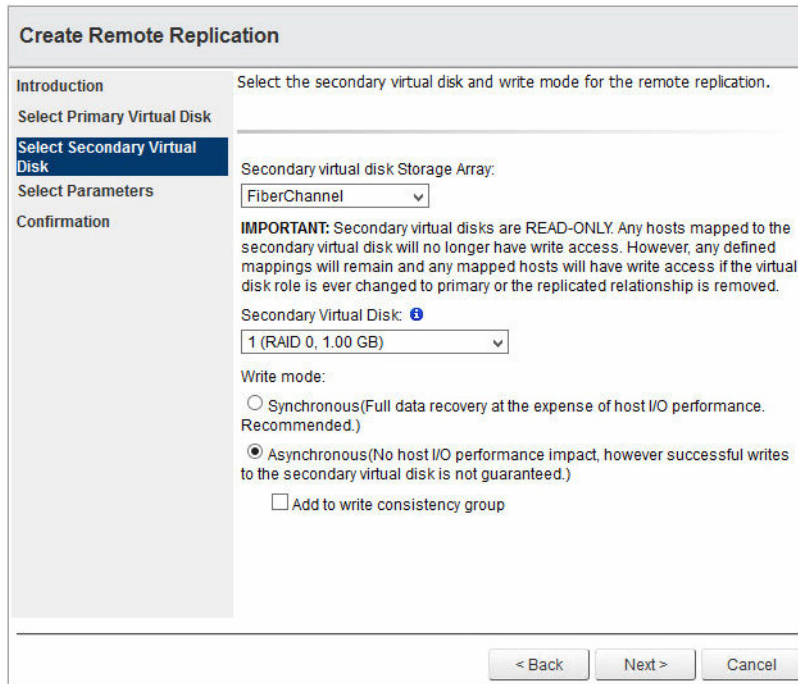


Figure 63. Create Remote Replication (Legacy) dialog box

Suspend remote replication (legacy)

To suspend remote replication (legacy) of a replicated pair, perform the following task:

1. Select the replicated pair in the **Replicated Pairs** window.
2. Click **Suspend Replicating**.
3. Click **OK** to suspend the selected replicated pair or **Cancel** to cancel the operation.


The I/O between the replicated pairs is suspended, but the replicated association is maintained.

Resume remote replication (legacy)

To resume remote replication (legacy) of a suspended replicated pair, perform the following task:

1. Select the suspended replicated pair in the **Replicated Pairs** window.
2. Click **Resume Replication (Legacy)**.
3. Click **OK** to resume replication (legacy) of the selected replicated pair or **Cancel** to cancel the operation.

The I/O between the replicated pairs resumes, and out-of-sync data is resynchronized.

 **NOTE:** This option is available only for replicated pairs that have been suspended.

Change Replication Settings

To modify the parameters of a replicated pair, such as the synchronization priority, the resynchronization method, or the write mode, perform the following task:

1. Select the replicated pair to modify.
2. Select **Change Replication (Legacy) Settings** command from the **Actions** drop-down menu.

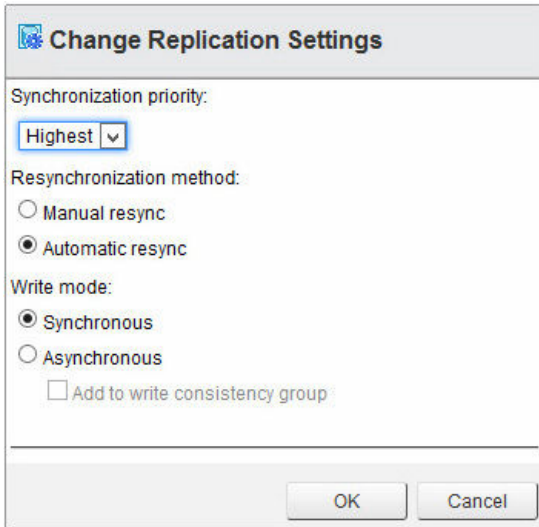


Figure 64. Change virtual disk copy parameters

3. Modify the displayed parameters as needed.
4. Click **OK**.

Change Replicated Roles

Changing replication roles makes the following role changes in the replicated pair:

- Promotes the secondary virtual disk to the primary virtual disk and allows read-write access to the virtual disk from the remote location.
- Demotes the primary virtual disk to the secondary virtual disk and disables writes to the virtual disk from the primary site.

To change replication roles, perform the following task:

1. Select the replicated pair in the **Replicated Pairs** window.
2. Select **Change Replicated Roles** from the **Actions** drop-down menu.
3. Click **OK** to change the replication roles or click **Cancel** to cancel the operation.

Test Replicated Communication

Testing replicated communication displays the round-trip times between the virtual disks in the replicated pair. The times are displayed as average round-trip times, shortest round-trip times, and longest round-trip times.

To test replicated communication, perform the following task:

1. Select **Test Replicated Communication** from the **Actions** drop-down menu.
2. Click **OK** to close the dialog box after reviewing the information display.

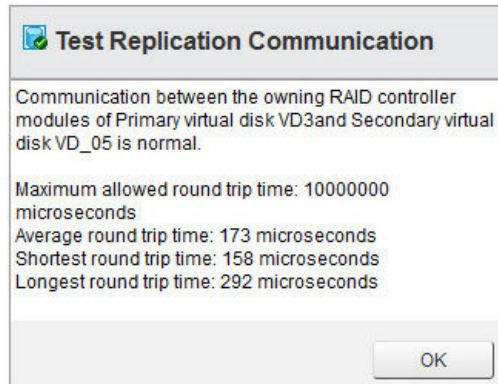



Figure 65. Test Replicated Communication results

Remove Replicated Pairs

Removing a replicated pair breaks the replication association between the virtual disk at the primary site and the virtual disk at the secondary site. After the operation completes, the replication status between the virtual disks is lost. For replication to be re-established between the virtual disks, a full resynchronization must occur. To remove a replicated pair relationship, perform the following task:

1. Select an existing replicated pair in the **Replicated Pairs** window.
2. Select **Remove Replicated Pairs** command from the **Actions** drop-down menu.
3. Click **OK** to remove the replicated pair or **Cancel** to cancel the process in the **Remove Replicated Pairs** dialog box.

 **NOTE:** The remove action will not remove the secondary virtual disk from the remote array or remove the existing data on the secondary virtual disk.

MD storage Manager Datastore Summary information

Datastore summary information may also be displayed by performing the following task:

1. Go to the **Storage** view from the home button.
2. Select the **Datastore** to view from the Navigator list.
3. Click the **MD Storage Manager Datastore Summary** link.

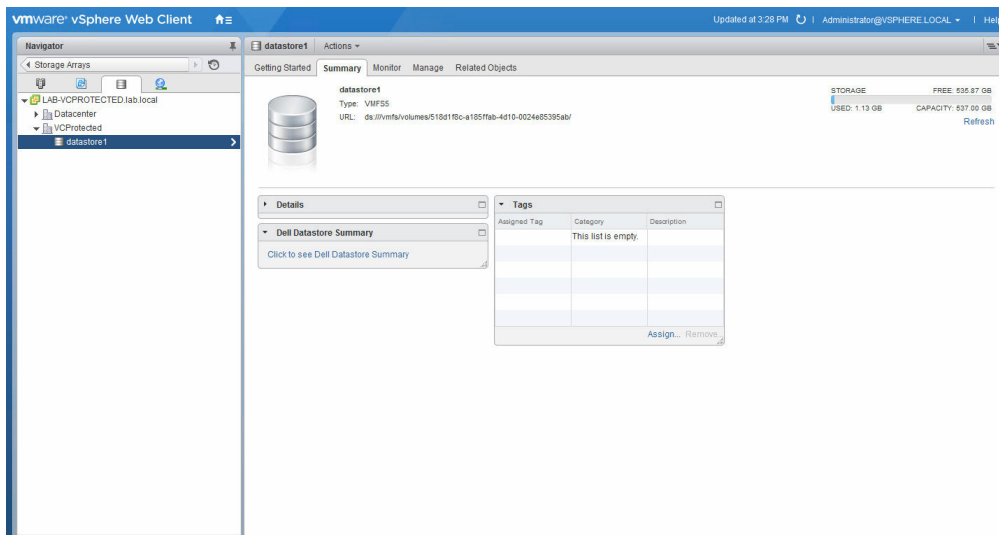
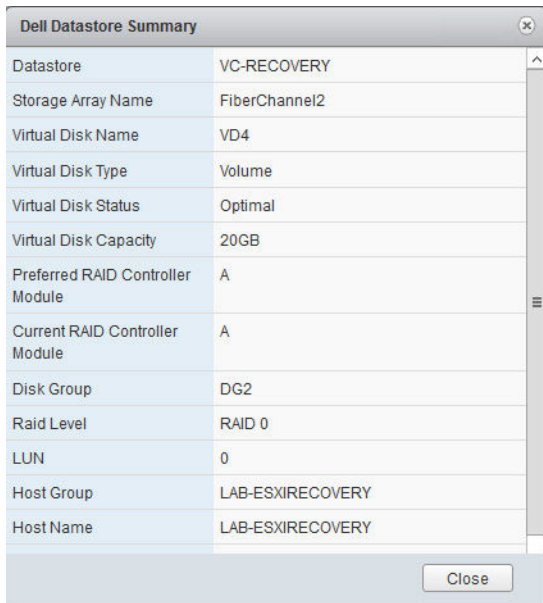


Figure 66. VMware vCenter storage Summary view

The summary information for the selected datastore is displayed. This information includes storage array specific information on the underlying virtual disks servicing the selected datastore.



The screenshot shows a dialog box titled "Dell Datastore Summary" with a close button in the top right corner. The dialog contains a table with 15 rows of information. The table has a light blue header for the first column and a light gray header for the second column. The data is as follows:

Datastore	VC-RECOVERY
Storage Array Name	FiberChannel2
Virtual Disk Name	VD4
Virtual Disk Type	Volume
Virtual Disk Status	Optimal
Virtual Disk Capacity	20GB
Preferred RAID Controller Module	A
Current RAID Controller Module	A
Disk Group	DG2
Raid Level	RAID 0
LUN	0
Host Group	LAB-ESXIRECOVERY
Host Name	LAB-ESXIRECOVERY

At the bottom right of the dialog box, there is a "Close" button.


Figure 67. Dell Datastore Summary

Best practices

This section provides best practices for using MD storage arrays in VMware vSphere environments.

Defining virtual disks for vsphere

Before you provision virtual disks for VMFS datastores, you must plan how to set up storage for the ESXi systems, including deciding on the number of virtual disks to use and the size of the virtual disks.

 **NOTE:** For more information about making virtual disk decisions, including predictive schemes, adaptive schemes, and disk shares, refer to the following sections of iSCSI SAN Configuration Guide:

- Using ESXi with an iSCSI Storage Area Network
- Making LUN Decisions in the VMware vSphere Online Library

When you are deciding how to format the virtual disks, keep in mind the following considerations:

- Ensure that each virtual disk has the correct RAID level and storage characteristics for applications in the virtual machines (VMs) that use that virtual disk. Ensure that each virtual disk contains only one VMFS datastore.
- When multiple VMs access the same VMFS datastore, use disk shares to prioritize virtual machines.

Fewer, larger virtual disks are appropriate for the following reasons:

- More flexibility to create VMs without asking the storage administrator for more space. More flexibility for resizing virtual disks, doing snapshots, and so on. Fewer VMFS datastores to manage.
- More, smaller virtual disks are appropriate for the following reasons: Less wasted storage space. Different applications might need different RAID characteristics.
- More flexibility, as the multipathing policy and disk shares are set per virtual disk.
- Use of Microsoft Cluster Service requires that each cluster disk resource is in its own virtual disk.
- Better performance because there is less contention for a single virtual disk.


Virtual disk decision-making schemes

When the storage characterization for a VM is not available, you can use either the predictive scheme or the adaptive scheme to decide on the virtual disk size and number of virtual disks to use.

Using the predictive scheme to make virtual disk decisions

1. Create several virtual disks with different storage characteristics.
2. Build a VMFS Datastore on each virtual disk. Label each datastore according to its characteristics.
3. Allocate virtual disks to contain the data for VM applications in the VMFS datastores built on virtual disks with the appropriate RAID level for the applications' requirements.

4. Use disk shares to distinguish high-priority VMs from low-priority VMs.

 **NOTE:** Disk shares are relevant only in a given host. The shares assigned to VMs on one host have no effect on VMs on other hosts.

5. Run the applications to determine whether or not VM performance is acceptable.

Using the adaptive scheme to make virtual disk decisions

1. Create a large virtual disk, such as RAID 1+0 or RAID 5, and enable write caching.
2. Build a VMFS datastore on that virtual disk.
3. Place four or five virtual disks on the VMFS datastore.
4. Run the applications to determine whether disk performance is acceptable.

If performance is acceptable, you can place additional virtual disks on the VMFS datastore. If performance is not acceptable, create a new, larger virtual disk, and repeat the process. You can use a different RAID level. Use migration so that you do not lose VMs when you recreate the virtual disk.

VMware ESXi host fibre channel configuration

The MD vCenter Plug-in allows an ESXi host to be automatically configured to use a MD storage array by detecting the installed host bus adapters (HBAs) in the ESXi host and configuring new hosts on the storage array with the World Wide Names (WWNs) of the HBAs from the ESXi host. The default ESXi multipathing mode for MD Fibre Channel storage arrays is Most Recently Used (MRU). To ensure optimum performance for the ESXi host with more than two HBAs, you must configure ESXi host to use the storage array in pairs of HBAs. This method allows for the maximum I/O throughput from the ESXi host to the storage array. Using this method requires proper SAN configuration and balancing of LUNs between hosts/host groups. Figure 70 shows a properly configured two-HBA port, ESXi host, SAN configuration utilizing two fabric switches and a dual-controller storage array.

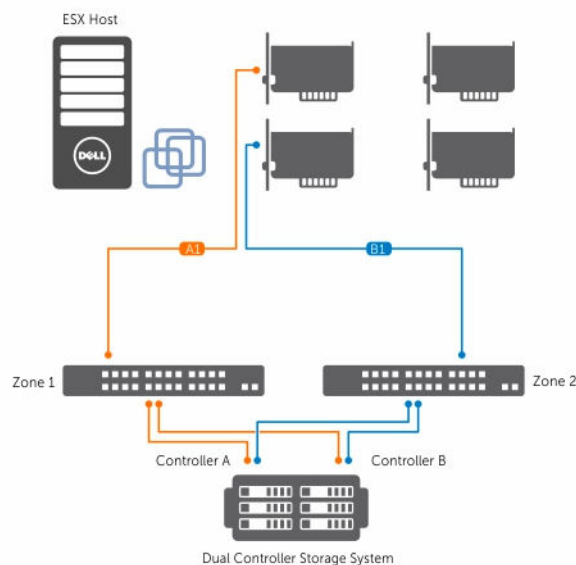


Figure 68. Dual port HBA configuration

This example shows a fully redundant fabric configuration. If a Fibre Channel (FC) switch or HBA fails, the alternate switch still connects to both storage RAID Controller Modules in the storage array. If a storage RAID Controller Module also fails, the ESXi host can still access the remaining RAID Controller Module, and all virtual disks fail over to that RAID Controller Module. A complete loss of access to storage occurs if any other element fails.

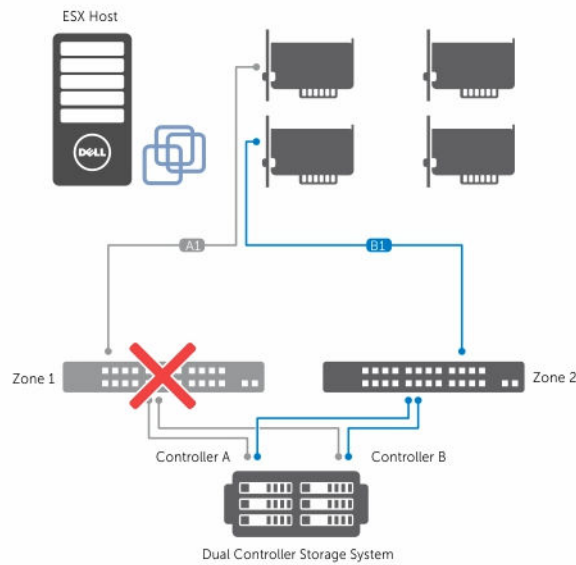


Figure 69. Single failure

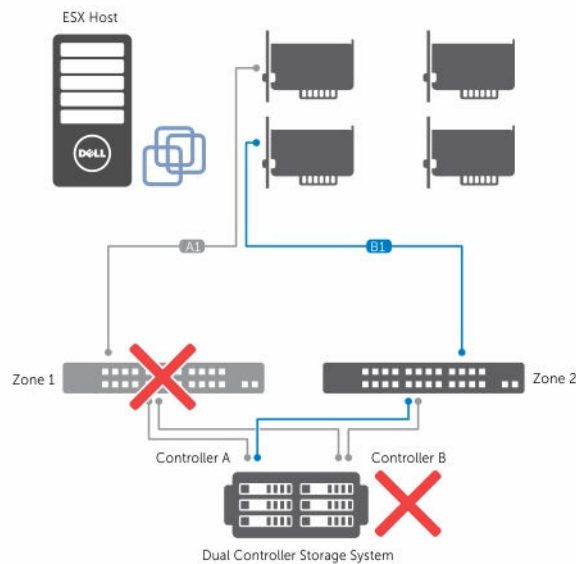


Figure 70. Double failure

This method works well to maintain access to the data in case of a hardware failure; however, MRU only maintains one active path for each HBA group. Therefore, if you have an ESXi host with four HBAs, only

one HBA is active at a time. To achieve higher I/O throughput from the ESXi host to the storage array, group the HBAs in pairs, and create virtual hosts for each pair of HBAs. This allows for a fully redundant configuration, but also allows for two of the HBAs to be active at the same time versus a single HBA. From the storage array, the second pair of HBAs is defined as a separate host, and then you can map virtual disks directly to the new host or host group. You can use this same methodology to group additional HBAs in the same manner. This method does require additional management to balance the LUNs between the hosts/host groups to fully use the FC bandwidth between all HBA groups. When this method is used in the array, the Automatic ESXi Host Configuration utility cannot determine which HBAs are configured to each zone in the fabric, and the user must verify that a single HBA is connected to both fabric zones for each HBA pair group.

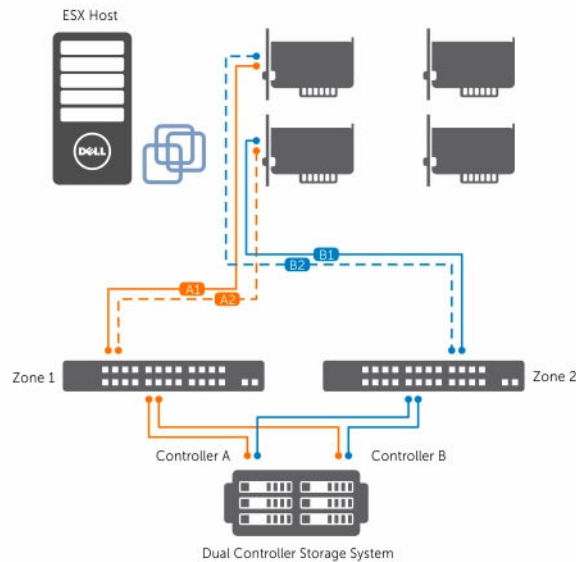


Figure 71. Quad port configuration

NOTE: The intent of this configuration is to pair the HBAs so that no group of HBA ports are contained on a single HBA card (if you are using dual port cards).

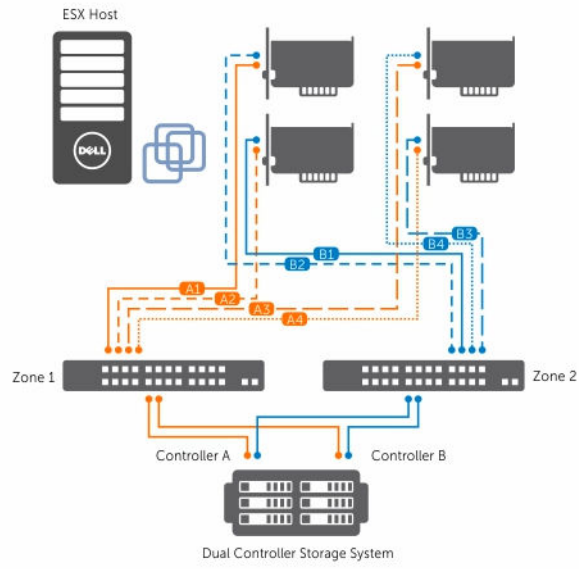


Figure 72. Eight HBA port configuration

Appendices


Current restrictions

This section describes known issues and available workarounds with MD vCenter Plug-in.

ID: 200627833 – multiple item delete restricted to less than 80 objects

Issue: When using multiple array delete or multiple virtual disk delete, you must limit the number of selected objects to less than 80 per invocation of the command. This is due to the addressing space allowed by the SDK.

Work Around: Run the multiple delete action repeatedly selecting less than 80 objects per invocation.

 **NOTE:** Microsoft Internet Explorer browsers are limited to less than 40 objects per invocation.

ID: 200702748 – ESXi host to storage array wizard usability issues

Issue:

1. The **Add Host Group** button should be greyed-out on the initial loading of the manual configuration page.
2. After creating an object under the parent item in the tree of the manual configuration page, the visual representation of being selected (blue background on the label) on the parent is not displayed. The font of the label stays bold.
3. The Rename dialogs for the Host Group and Host do not have titles.
4. After staging the objects to be created and you are on the **Review Changes** page, if you click on the back button your items that were staged are no longer displayed.

Work Around: There is no real workaround for these issues.

ID: 200716368 – vSphere 6.0 SAS datastore view

Issue: When using vSphere 6.0, SAS Datastore virtual disks are not displayed in the Plug-in Datastores view portlet.

Work Around: There is no workaround for this issue at this time.

Configuration worksheet

vCenter server Name: _____

DNS Name: _____

IP Address: _____

vCenter server Administrator Name: _____

Password: _____

Application Server Name: _____

DNS Name: _____

IP Address: _____

Storage Administrator User ID: _____

Security Level: Read-Only _____ or read-Write _____

Storage Administrator User ID: _____

Security Level: Read-Only _____ or Read-Write _____

Storage Array 1 Name: _____

IP Address(es): _____/_____

Password: _____

Storage Array 2 Name: _____

IP Address(es): _____/_____

Password: _____

Storage Array 3 Name: _____

IP Address(es): _____/_____

Password: _____

Storage Array 4 Name: _____

IP Address(es): _____/_____

Password: _____