

**ABSOLUTE
AUCTION**

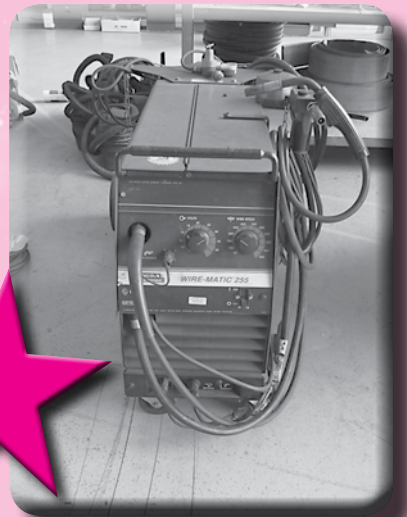
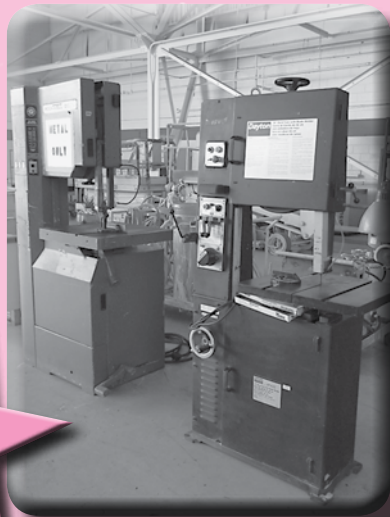
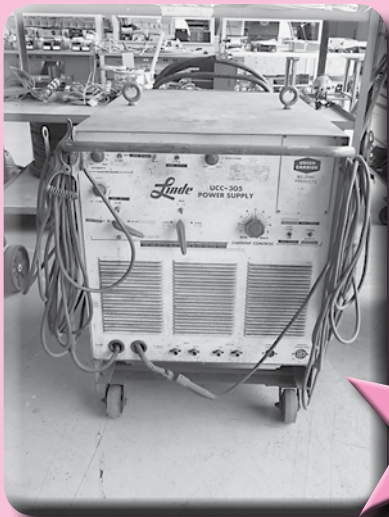
TWO DAY

**AIRCRAFT
AUCTION**

**FRIDAY & SATURDAY,
JUNE 19th & 20th, 2015**
Starting at 9:30 A.M.
Local Time Both Days

KNH AVIATION SERVICES, INC. dba AVCRAFT TECHNICAL SERVICES
By Order of U.S. Bankruptcy Court District of South Carolina Case #15-01641-dd
3301 Mustang Street, Hangar #352 ~ Myrtle Beach, South Carolina 29577
Located on the General Aviation Side of the Myrtle Beach Int'l Airport

OPEN HOUSE & PRE-REGISTRATION: Thursday ~ June 18th from 8:30 A.M. to 5:00 P.M.



PRSRT FIRST CLASS
U.S. POSTAGE
PAID
MAIL U.S.A.

First Class

SALE SITE NUMBER:
Steve Starman - (402) 681-6456



AIRLINE CONNECTIONS:

Several major airlines have service into Myrtle Beach, SC including Spirit Airlines & Allegiant. Private aircraft can land at Myrtle Beach Int'l Airport.

HOTELS:

Crown Reef Resort
2913 So. Ocean Blvd.
Myrtle Beach, SC
(843) 626-8077

Compass Cove
2311 So. Ocean Blvd.
Myrtle Beach, SC
(843) 448-8373

Paradise Resort
2201 So. Ocean Blvd.
Myrtle Beach, SC
(888) 341-7169

NOTE: There are several other Resorts and Hotels surrounding the beachfront area and within 1-2 miles from the airport.

STARARMAN BROS. AUCTIONS INC.
1240 Royal Drive ~ Papillion, NE 68046
(402) 592-1933 FAX: (402) 592-2327
www.starmanauctions.com

STARARMAN BROS. AUCTIONS INC.

1240 Royal Drive • Papillion, NE 68046
(402) 592-1933
www.starmanauctions.com

Return Service Requested

Check Out Our Web Site...
www.starmanauctions.com



ATR 42/72 & DORNIER EXPENDABLES

Placards, Spacers, Window Rollers, Screens, Sealing Profile, Track Cover, Brackets, Cable Assys., Control Cables, Tube Assys., Covers, Control Rods, Slush Frames, Tubes, Fittings, Supports, Spacers, Shims, Hinge Halves, Non Skid, Floor Beams, Angles, Floor Panels, Strips, Fittings, Locking Strips & Plates, Seal, Retainers, Jumper Harness, Lenses, Safety Walk, Window Panes, Plates, Guide



Rails, Lamps, Stringer Splice, Profile Seal, Bearing Races, Plugs, Blind Roller, Covers, Shims, Armrests, Guide Straps, Various P&W Expendables, Fasteners, Life Vests, Guide Blocks, Roller Carriers, Shrouds, Bushings, Bearing Seals, Seatbelts, Hoses, Profile, Duct Assys., LAMPS & Lamp Bulbs, Antenna Gaskets, Fairings, Bumpers, L Angle Extrusions, BAC Bushings, Mounting & Cable Brackets, Circuit Breakers, Back Shells, Seat Track Extrusions, Connectors, Lower Fitting Assys., Doorway Extrusions, Panel Assys., Brackets, Fittings, Supports, Links, Pin Assys., Pipes, Attach Angles, Bushings, Hinge Halves, Diaphragms, Retainers, Stringers, Floor Beams, Fitting Assys., Members, Seal Retainers, Doublers, Angles, Clips, Cannels, Splice Plates, Cords, Stiffeners, Straps, Gussets, Ribs, Flap Hinges, Stop Ribs, Manifolds, Etc.

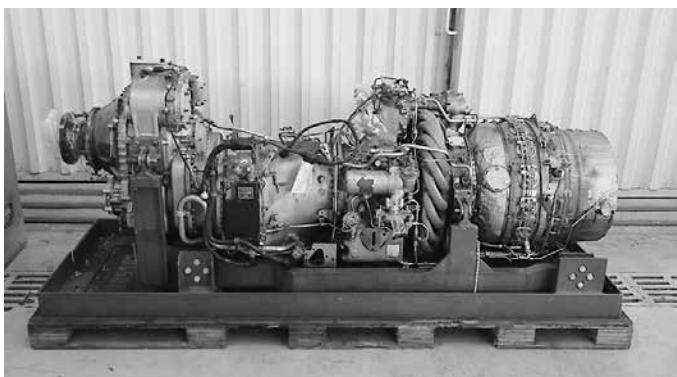
NOTE: There is a Very Good Selection of NEW Expendables for ATR 42/72 & Dornier. For a complete list by Part Number go to www.starmanauctions.com and click on KNH Aviation Services dba AvCraft under Upcoming Auctions. This Inventory has the Trace Documents Attached to it.

ATR 42/72 & DORNIER ROTABLES

Good Selection Includes O/H, Inspected and As Removed Yoke Trim Actuators, Alternator, Ducts, Signal Processor, Temp Sensor, Hyd Pump Motor, Motor Converters, Ventral Fin, Floor Panels, Relay Supports, Leading Edges, Wing Tips, Lower Cowling, Fuel Pump Harness, Air Stair Door, Pressure Switches, Isolators, Anti-Collision Lights, Strobe Power Supply, KCU-951 HF Controller Panel, Ice Detector, Circuit Breakers, Ground Spoiler Actuators, Guide Wheels, DC GCU's, PBE Hoods, Emergency Exit Doors, Cargo Door, Pressure Switches, Air Stair Door, Oxygen Masks, Digital Flight Data Recorder, CPCS Panel, Uplock Assy., Landing Gear Assist Actuators, NWS ECU, Outflow Valve Filter, Fuel Waste Injector, Motive Flow Valves, Flap Actuator, Fuel Transmitters, Torque Speed Signal Conditioner, Oil Cooler Valve, Emergency Power Supply, Ice/Fuel Hyd Control Panel, APU Control Panel, Oxygen/ECS Control Panel, Flight Attendant Panel, Cargo Fire Control Panel, Distribution & Relay Boxes, Cable Tension Regulators, Wind Screen Heat Control Unit, APU Fire Bottles, Fire Extinguisher Bottles, Fuel Control Unit, Temp Controller, Non Return Valve, Hyd Pump & Motor, Auxiliary Pump, Aileron Disconnect Units, Oxygen Cylinders, ELT-110, Temp Control Valves, Pneumatic Isolator Valve, Pneumatic Temp Sensors, Trompe Jet Pumps, Flight Guidance Computer, VHF Transceiver, CD-810 Control Display Unit, DU-870 Display Units, Micro Air Data Computers, RNZ-851 Navigation Units, RCZ-851 Communication Unit, CDC Head, Fuel Probes, Dukane Battery Kit, 4-Blade Prop Hub, Yoke Trim Actuators, Pitch Trim Actuators, Rudder Trim Actuators, Stick Pusher Actuators, AOA Sensors, L/H & R/H Cockpit Windows, Isolators, Mark IV Warning Computers, Actuators, Wheel Speed Transducer & Sensor Kits, Parking Brake Valves, Ground Cooling Fans, Squibs, AC Contactors, Engine Feed Jet Pumps, Rudder Assy. Dampers, Thermal Element Retrofit Kits, Flap Assy. R/H, Static Inverter, Cowling, GPS Antennas, Press Dump & Relief Valves, Etc.

NOTE: Rotables will come with Trace. For complete description go to www.starmanauctions.com and click on KNH Aviation Services, Inc. dba AvCraft Technical under Upcoming Auctions.

PRATT & WHITNEY ENGINE CORE



P&W 121A Engine Cores S/N PCE-121394

NOTE: We have not located the Log Books on this Engine at this time. If we do not find them, it will be sold without Log Books.

NEW HARDWARE INVENTORY

Very Large Selection of New Hardware. All Inventory has the Trace Paperwork Attached to it.

ABS Hardware: Bolts, Screws, Clamps

AN Hardware: Bolts, Nuts, Screws, Clamps, Plugs, Adapters, Unions, Washers, Large Selection of O-Rings & Packings

ASN Hardware: Clamps, Washers, Bonding Strips, Screws, Nuts, Receptacles

BAC: Bushings, Bolts, Nuts, Nut Plates, Washers

Cap Plug Inventory: Very Large Selection of Cherry Rivets & Cherry Max Rivets

Large Selection of Solid Rivets, Studs, Nut Clips

Hi Lock Inventory: Large Selection

Several Bushings & Bearings

NAS & MS Hardware: Bearings, Nuts, Lock Plate Nuts, Washers, Pins, Rivets,

Bolts, Unions, Plugs, Caps, Adel Clamps, Cotter Pins, Screws, Rivets, Rivnut,

Nut Plate, Insert, Spacers, Bushings, Inserts, Studs, Etc.

ATR 42/72 & DORNIER 328 AS REMOVED INVENTORY

Good Selection of ATR & Dornier As Removed Inventory to Include Galley Dividers, Closet, Ducting, Wing Rest Fairings, Overhead Bins, Side Wall Panels, Overhead Panels, Electrical Junction Boxes, Passenger Seats, NiCad Batteries, Antennas, Pitot Tubes, Electrical Annunciator Panels, Oxygen Control Panels, Honeywell GP-300 Guidance Control Panel, Breaker Panels, Jet Battery, Emergency Power Supplies, CPCS Control Panels, Oxygen Masks, David Clark Headsets, Floor Board Panels, Lines, Life Vests, Solenoids, Rectifiers, Canon Plug Inv., Hardware Kits, Control Surface Tips, Airframe Panels, Antennas, Etc.

NOTE: This As Removed Inventory will not have trace and is in various degrees of tear-down and as removed condition. This Inventory is an addition to the lists posted on our website and will be sold as is.

SHOP EQUIPMENT



Sullair Mdl ES-8 Rotary Screen Compressor, 25-HP Motor



Jet Mdl BP-1648 48" Sheet Metal Finger Brake, 16 Gauge Capacity
Berkroy Mdl B-936 36" Sheet Metal Finger Brake



Craftsman Mdl 101-077403 Bench Top Lathe, 13" Swing, 3-1/4 Hollow Spindle, 3 & 4 Jaw Chucks, 36" Between Centers w/Various Tooling
12" Metal Cutoff Saw



Jet Mdl CTAS-12H-3LFR 12" Tilting Arbor Table Saw, 5-HP, 3-Phase Motor, 34" x 42" Table
Porter-Cable Mdl 3802 12" Compound Miter Saw on Cart



Delta Mdl 31-390 6" Edge Sander, 38" Sanding Area, 6" x 132" Belt, 2-HP, 1-Phase Motor
8" Disc Sander, 1-HP Motor
Dayton Mdl 12773A 4" Belt Sander
Delta Rockwell Mdl 101-6402 6" Belt Sander, 3/4 HP Motor
Jet Mdl JDS-20-1 20" Disc Sander, 2-HP, 1-Phase Motor



Kingsley Mdl E-302 Electronic Wire Marking Machine, Marks Wire Size .040-.250 w/Extra Dies & Eraser
Mdl WMI Accessory
Omega Mdl DS-12E Paint Recycler, 12-Liter Capacity



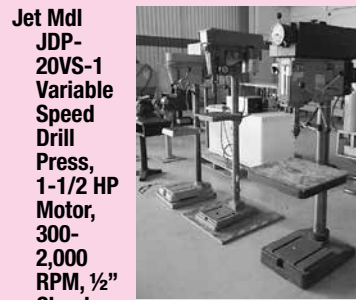
Herkules Paint Gun Wash & Recycler Station
Red Devil Mdl 5400 Twin Arm, 1-Gallon Paint Shaker, 110 AC Power
1-Gallon Pneumatic Paint Shaker
Binks Paint Pot Cart, 15-Gallon Pot, Air Regulators & Gun
(2) Magnaflux Mdl ZB-100 Black Lights
Spotcheck Die Penetrant Kit
(6) Sheet Metal Roller Stands
Power Products Mdl 1550CML Aircraft Battery Charger/Analyzer
(2) Christie Mdl RF80H NiCad Battery Charger/Analyzers
Christie CASP/2500 Digital Battery Charger/Analyzer
Aero Quality Mdl A & C Battery Charger/Analyzer
Gill Mdl TDMC Dual Mode Battery Charger
Battery Charger/Analyzer Shunts & Inv
(2) Aircraft Jumper Cables
Rigid 14-Gallon, 6-HP Shop Vac



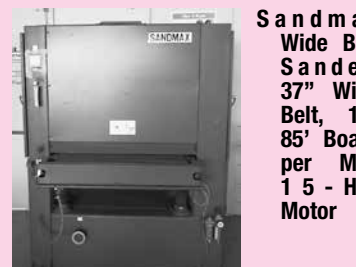
Sullair SR-250 Compressor Refrigerant Dryer



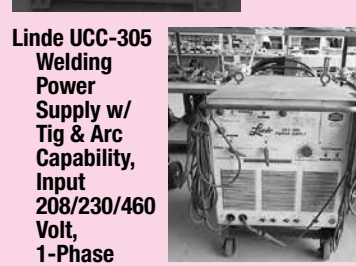
Jet Mdl FS-1652 52" Sheet Metal Shear, 16 Gauge Capacity



Jet Mdl JDP-20VS-1 Variable Speed Drill Press, 1-1/2 HP Motor, 300-2,000 RPM, 1/2" Chuck, 20" x 22" Table
Craftsman Mdl 113-21370 Variable Speed Drill Press, 1/2 HP Motor, 380-8,550 RPM, 12" x 12" Table
Variable Speed Drill Press



S and m x Wide Belt Sander, 37" Wide Belt, 19-85' Board per Min, 1 5 - H P Motor



Linde UCC-305 Welding Power Supply w/ Tig & Arc Capability, Input 208/230/460 Volt, 1-Phase Output 100 Amps, AC/DC



Sentro Tech ST-1200-7812-AG High Temp Heat Treat Furnace, 1,200° C Max Temp, Chamber Size 7" x 8" x 12", Digital Temp Controller



Devilbiss 10-Gallon Paint Pot w/ Cart & Gun
(4) 1-1/2 Gallon Paint Pots w/ Guns
(2) Graco Pneumatic Barrel Pumps
Aerovee 800 Vers-A-Stripper Line Marker
Cardinal Detecto Mdl 854F100P Platform Scale, 1,000-Lb Capacity
(4) Dayton 125,000 BTU Portable Kerosene Heaters
Window Air Conditioner on Cart
(5) Air Pigs
Branson 5210 Ultrasonic Cleaner
(2) Grease Pots
Tronair Lifting Sling 08-126-4000 Engine Sling HS125-700
(4) Misc Lifting Fixtures & Slings
(5) 3/4-Ton Chain Hoists
(2) Magnaflux Mdl 23 Black Light Kits w/Chemicals
Dayton Mdl 42663E Shop Vac
Shop Vac, 6-Gallon, 3-HP
(7) Dayton 1-Gallon Shop Vacs
Large Selection of Drop Lights & Extension Cords
Snap-On 2-Ton Floor Jack
Automotive Jack Stands
New Hi-Lift Pumper Jack



Chicago 8' Sheet Metal Brake



Tennsmith Mdl SR-42 42" Sheet Metal Roller, 24 Gauge Capacity
31" Sheet Metal Slip Roller

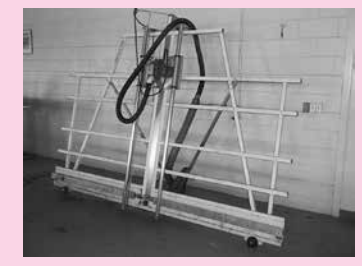


Dayton Mdl 4TK02 18" Band Saw w/ Blade Welder, 18" Throat, 20" x 22" Tilt Table

Rockwell-Delta Series 28-3X5 Band Saw, 20" Throat, 24" x 24" Tilt Table

(3) Pedestal Grinders/Buffers, Jet, Delta & Baldor Models

Jet Mdl JTAS-10-1 10" Tilting Arbor Table Saw, 3-HP Motor, 27" x 72" Table



Safety Speed Mdl H-5 Vertical Panel Saw, Milwaukee 8" Saw, 10' x 6' Frame



Jet Mdl JWP-15HO 15" Wood Planer, 3-HP, 1-Phase Motor

Jet Mdl JJ-6CS 6" Long Bed Woodworking Joints, 3/4 HP, 1-Phase Motor, 45' Bed

Excalibur Mdl EX30VS Precision Scroll Saw, 30" Throat, Variable Speed 1/8 HP Motor

Craftsman Professional Dust Collector, 1-1/2 HP Motor

Workshop Tools Dual Bag Dust Collector Mdl SF-003FG, 3-HP Motor

36" x 42" Router Table w/Porter-Cable Router

55-Lb Anvil on Stand

Famco No. 3 Arbor Press

(2) 40,000-Lb H-Frame Presses

Lincoln Wirematic 255 Mig Welder w/ Lincoln Spool Type Gun

Hypertherm Power Max 45 Plasma Cutter

Oxygen/Acetylene Cart w/Torch & Regulators

(2) Cox & Stevens Mdl CS-7 Aircraft Weight Scales, 150,000-Lb Capacity, 3 Load Cells

Set of (3) Aircraft Loadmeter Mechanical Aircraft Scales, Type C, 20,000-Lb Capacity

Econoline Mdl 36-0 Bead Blast Cabinet 36" Long x 24" Deep x 23" Tall

Zep Dyna-Brite Mdl 906201 Parts Washer

(2) Goodyear & Pittsburgh Wheel Balancers

Tronair Tire Bead Breaker 14-4039-0000

Fatigue Technology Mdl LB-20 Cold Working Kit w/Little Brote Puller Unit/Power Supply w/Inv

(8) 42" Commercial Drum Fans
Dayton 48" Box Fan

(6) Pedestal Fans

Electrical Extension Cord Power Point Stands

Rolls of Heavy Duty Extension Cords (15+)

Maintenance/Inventory Ladders, 3' thru 11' Height

(3) 12' Fiberglass Step Ladders

(4) 10' Step Ladders

(7) 6' & 8' Step Ladders

(9) 2' thru 4' Step Ladders

24' Fiberglass Extension Ladder
Large Selection of Brooms & Dust Pans

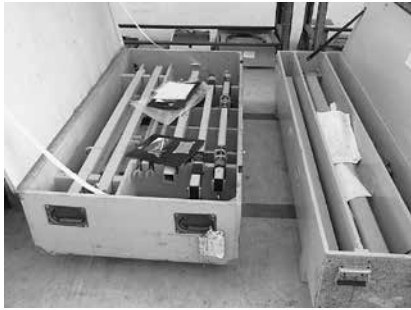
HAND TOOLS

(4) Cherry Pneumatic Rivet Pullers Mdl G704A, G704B, & G784, Etc.
 Huck Rivet Puller
 Cherry & Huck Rivet Pulling Heads
 (5) Pneumatic Rivet Squeezers, Most are Chicago
 Cherry Mdl G749 Hydraulic Rivet Puller
 Hand Rivet Squeezer
 (13) Pneumatic DA Sanders
 (4) Orbital & Straight Line Sanders
 (5) Pneumatic Drills
 (8) Pneumatic Rivet Shavers, Right Angle Drills, Etc.
 (2) Electric Routers
 Sealant Removal Kit
 (4) Pneumatic Polishers
 (11) IN/LB Torque Wrenches, Snap On & Misc
 (7) FT/LB Torque Wrenches, Snap On & Misc
 Proto 6202A Torque Multiplier
 (4) Veneer Calipers
 (10) Micrometers, Various Sizes
 Gauge Block Set
 Depth Gauges
 Dial Indicators
 Burroughs Aircraft Cable Gauge Set 8159
 T-5 Cable Tensiometer
 Prop Protractor
 Heli Coils
 Letter & Number Stamps
 Bushing Drivers
 Hole Saw Kits
 (4) Tronair High Pressure Tire & Strut Gauges
 US Tool Hand Operated Sheet Metal Shrinker/Stretching
 Large Selection of Pressure Gauges
 (10) Bench & Wood Vices
 Tubing Benders & Flaring Kit



Heat Guns
 Soldering Stations & Guns
 Micro Press Tools
 Battery Cable Crimper
 Electrical Wire Strippers & Pin Insertion Tools
 Riv-Nut Tools
 Cherry Hand Operated Rivet Pullers
 Clecos
 Bucking Bars
 Several Electronic Digital Scales
 Crows Feet Wrenches
 Sealant Guns
 Drill Sharpener
 Dewalt Pneumatic Nail Gun
 Cordless Drills
 10-Ton Portable Hydraulic Power Kit
 Furniture Clamps
 Electric Grinder & Buffer
 Paint Guns
 Cable Swedgers

DORNIER SPECIALTY TOOLING



Hydro Bootstrap-System Mdl HG-15
 Hydro Wing Hoisting Sling P/N DOT070001
 Rudder Rigging Board & Pins, Also has Prop Rigging Board in Same Set
 Dornier Horizontal Stabilizer Hoist
 (2) Dornier Aileron Rigging Boards
 Dornier Elevator Rigging Board
 Dornier 328 AOA Sensor Protractor Set P/N 001U274A1900000



Dornier 328 Jack Adapters
 Dornier 328-300 Proximity Switch Simulation Plates
 Dornier 328-100 Ground Spoiler Rigging Boards
 Brake Bleed Connector Kit
 Dornier Rigging Pins
 (2) Dornier Brake Master Cylinder Bleeding Kit
 Various Other Smaller Dornier Specialty Tools

ATR 42/72 SPECIALTY TOOLS

Complete Set of ATR Dummy Gears, Shop Built
 ATR Aileron Checking Jigs R/H & L/H
 ATR Rudder Trim Jig
 ATR Inner Flap Checking Jig
 ATR Outer Flap Checking Jig
 ATR Elevator Rigging Boards
 Angle Position Jig
 ATR 42/72 Wing Access Panel Router Tool

Spinner Pullers
 Wing Flap Control Box
 Landing Gear Sockets
 Wing Load Resting Pads
 ATR Jack Pads
 Fuselage Jack Adapters
 Several Other Smaller ATR Specialty Tools

MISC PRATT & WHITNEY PT-6 TOOLS

Miscellaneous Selection of P&W PT-6 Tooling

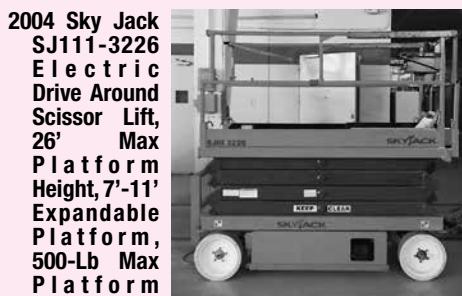
FORKLIFT & SCISSOR LIFTS



Hyster S70B Forklift, 5,600-Lb Capacity, Triple Stage Mast, Side Shift, Auto Trans., Propane Engine, Solid Rubber Tires



(3) Genie GS-2632 Electric Drive Around Scissor Lifts, 26' Max Platform Height, Extendable Platform 8'-11', 500-Lb Max Platform Capacity



2004 Sky Jack SJ111-3226 Electric Drive Around Scissor Lift, 26' Max Platform Height, 7'-11' Expandable Platform, 500-Lb Max Platform Capacity
 2001 Stratolift SA25 Electric Drive Around Scissor Lift, 25' Max Platform Height, 11'-15' Expandable Platform, 750-Lb Max Platform Capacity
 Forklift Personnel Work Platform
 (2) 5,000-Lb Pallet Jacks



Upright X26N Electric Drive Around Scissor Lift, 26' Max Platform Height, 7'-11' Expandable Platform, 1,000-Lb Max Platform Capacity
 Pac Craft 125EMPRC Pull Around Electric Scissor Lift, 19' Max Platform Height, 6-1/2' Work Platform, 500-Lb Max Platform Capacity
 Forklift Extensions

AVIONICS & MISC. TEST SETS



Barfield Air Data Test Set P/N 101-00167
 Barfield Digital Turbine Test Set P/N 101-00901
 Barfield Digital Fuel Quantity Test Set P/N 101-00850
 Barfield Fuel Quantity Test Set P/N 101-00420
 Stormscope WX-PA Portable Analyzer 78-8060-57104
 JC Air HWX-650/870 Test Panel
 Master & Sight Compasses
 Optical Comparators
 Various Nav-Aids Adapters
 (3) Astron Mdl VLS-25M DC Power Supplies
 (2) Vector Vid Mdl WP-718 Regulated DC Power Supplies

GW Mdl GPR-1820HD Supplies DC Power Supply
 (2) Fluke 45 Dual Display Multimeters
 (3) HP Multimeters Mdl 34401A, 3435A & 3466A
 (4) Fluke Hand Held Multimeters Mdl 233, 179, 79 & 111
 Fluke 1507 Insulation Tester
 Kroy K5100 Shrink Tube Labeler
 BK Precision 3011B 2MHz Function Generator
 Clamp Meter
 Instek Mdl FC-8131 Intelligent Counter
 Panametrics Mdl 22 Ultrasonic Thickness Gauge
 Dakota Mdl PVX Precision Visual Thickness Gauge
 (16) Various Breakout Boxes Including JC Air CBM-100, JC Air C5M-100, Engine/APU Fire Extinguisher Test Box & Others
 Dukane 42A12D Ultrasonic Test Set
 General Radio RF Adapter Set
 Various Other Avionics Test Pieces
 Dresser Mdl EMH-150 Hand Torque Tool Analyzer
 CAS Corp Mdl NC-1 Digital Dynamometer, Capacity 500 x 0.2 Lb
 Various Boroscope Equipment
 Various NDT Equipment Probes, Masters, Etc.
 Vacuum Pumps

VEHICLES & GROUND SUPPORT EQUIPMENT



GMC Sierra 2,000-Gallon Jet A Fuel Truck, Overwing & Single Point Nozzles, Dual Pumps & Meters, Top & Bottom Load, Velcon Filter System, Brown Epoxy Steel Tank, 7,000 V-8 Gas Engine, Auto Transmission
 Snyder Fuel Sump Trailer, 300-Gallon Plastic Tank



1985 Chevrolet Step Maintenance Van, V-8 Gas Engine, Auto Trans. w/Cabinets



1988 Tug Mdl MA50-4 Aircraft Tug, 5,000-Lb DBP, 4-Cyl Perkins Diesel Engine, Auto Trans. w/Cab
 Northwest Aircraft Tug Mdl 1008DP, Dual Rear Wheels, Perkins Straight 6-Cyl Diesel Engine, Auto Trans.



Tennant 528 Drive Around Floor Scrubber/Sweeper, Ford 4-Cyl Gas Engine



Toro Zero Turn Mower 25035, 50" Deck, 24-HP Kawasaki Motor



Jetmac Skydrol Hydraulic Mule P/N 1006-SA-4-34, 3,000 PSI Max, 0-9.5 GPM
 Tronair Mdl 06-4035-3600 Hydraulic Service Unit, 8-Gallon Tank, 4,000 PSI Max Pressure



1995 Toyota Corolla 4-Door Car, 4-Cyl Motor, Auto Trans., A/C, AM/FM/Cassette Stereo, Power Windows & Door Locks



(5) Jetmac & Malabar 6-Gallon Hydraulic Servicing Carts
 (2) 2-Gallon Hydraulic Fluid Dispensers
 (3) Skydrol Servicing Pumps
 Tronair Nitrogen Booster 99-9003-0100
 Tronair Universal Tow Bar 01-1200-000
 (2) Tronair Dornier -328 Tow Bar Heads 01-0576-0000
 Astra Tow Bar Head
 Misc Tow Bar Heads
 Wheel & Brake Jack
 Tire Inflation Cage
 12' Flatbed Utility Trailer
 6' Utility Trailer
 Karcher Heated Pressure Washer, Honda Electric Start Motor, 365,000 BTU Kerosene Heater, 3,000 PSI Pump



Hobart GPU-600 Ground Power Cart Mdl 6T28-600CL, Output 28.5 Volts, 600 Amps
 Hobart GPU-600 Ground Power Cart Mdl 6T28-600CL, Needs Work

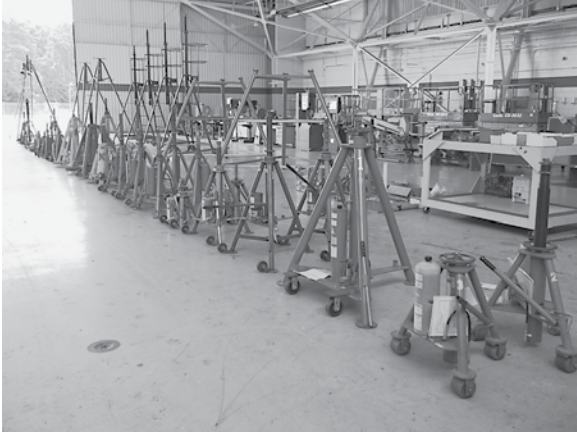


(3) Davco Air Conditioning/Heater Carts, Cummins 4-Cyl Diesel Engines, 240 Volt, 40 KW Generator, Trane R-22 A/C Unit, May Need Work
 UNI-Flex 20' Seagoing/Storage Container
 2000 46' Semi Flatbed Trailer, Aluminum Deck, Diamond Deck Storage Boxes
 1995 International 46' Semi Flatbed Trailer, Under Dock Storage Boxes & Air Conditioner
 Large Selection of Aircraft Chocks
 Aircraft Grounding Straps
 Aircraft Wheel Shipping Covers
 Aircraft Intake Plugs & Covers for Various Models



Tronair 5606, 3000 Series Hydraulic Mule Mdl 05-3005-1100, 3,000 PSI Max, 0-6 GPM
 (7) Ramp Fire Extinguishers

AIRCRAFT JACKS & STANDS



- (2) Tronair Mdl 02-7822-0110 26", 5-Ton Dual Stage Aircraft Jacks
- Tronair Mdl 02-1256-0111 56", 12-Ton Single Stage Aircraft Jack
- (2) Danair Mdl 0544-10 44", 5-Ton Aircraft Jacks
- Tronair Mdl 02-536-0100 36", 5-Ton Aircraft Jacks
- Tronair Mdl 02-536-0100 36", 5-Ton Aircraft Jack
- Tronair Mdl 02-7828-0110 28", 5-Ton Aircraft Jack
- Tronair Mdl 02-0520-0100 20", 5-Ton Aircraft Jack
- (5) 36" Aircraft Jacks
- (2) Military 2396A 32", 17-Ton Aircraft Jacks
- Mdl 3936 48", 25-Ton Aircraft Jack
- Mdl 972CT 50", 12-Ton Aircraft Jack
- Jetmac 3001-98 54" Aircraft Jack
- (2) Jetmac 3011M1 32" Aircraft Jacks
- (3) Jetmac 3001 24" Aircraft Jacks
- Meyers 24" Aircraft Jack
- (2) Airborne 20" Aircraft Jacks, Missing Pumps
- (2) Shop Built 24" & 32" Aircraft Jacks
- (2) Tronair Mdl 02-0522-0132, 22" 5-Ton Aircraft Jacks on 9-1/2' Extension Stands
- (2) Jetmac 3008 36", 20-Ton Aircraft Jacks on 8-1/2' Extension Stands
- Jetmac Mdl 3110 8", 17-Ton Axle Jack
- Amco Mdl 53D22020, 5-1/2" Axle Jack
- Regent Mdl 8117 8", 17-Ton Axle Jack
- (2) 2-Stage 5" Axle Jacks
- (2) Dash 8/ATR Wing Jack/Shoring Stands, 12' Tall, 24,000-Lb Capacity

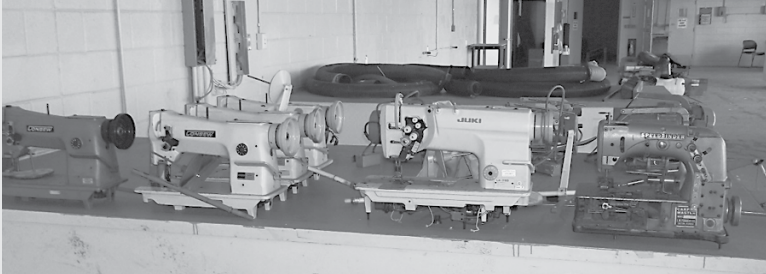
- (2) Dash 8/ATR Wing Jack/Shoring Stands, 12' Tall, 2,000-Lb Capacity
- (3) Dash 8/ATR Nose Jack/Shoring Stands, 36" Tall, 24,000-Lb Max Capacity
- Jack/Shoring Stand, 66" Tall, 24,000-Lb Capacity
- (2) Tronair 03-4026-0018 Tripod Jack Extension Stands
- (2) Aircraft Jack Extension Stands, 7-1/2' Tall
- Various Tronair & Various Other Makes of Tripod Jack Extensions, Rebuild Kit & Pumps
- Good Selection of Jackpoints for Various Aircraft
- Tronair Tail Stand
- Various Tail Stand Extensions
- Good Selection of Wood & Metal Shop Built Aircraft Shoring Stands for ATR, Dornier & Various Other Aircraft
- (3) Roll-A-Round 2-Place Prop Stands
- (4) P&W 100 Engine & Module Shipping Stands
- (3) Engine Transport Carts



UPHOLSTERY SHOP EQUIPMENT & COMPOSITE SHOP INVENTORY

Karpet King HD Mdl 812K Serging Machine

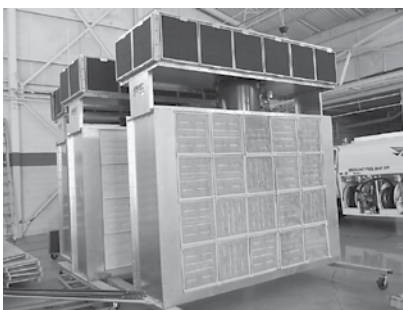
Carpet Master Mdl CTB600 Speed Binder



- Juki LH-3188 Industrial Sewing Machine
- (4) Consew 206RB-3 Industrial Sewing Machines
- Treadles & Misc Sewing Machine Parts
- Oster Clipmaster Electric Foam/Fabric Trimmer
- Jiffy Mdl J-4000 Proline Steamer

- Various Partial Rolls of Carbon Fiber, Kevlar, Fiberglass, AeroStrike & Aluminum Screen, PTFE Foil, Aluminum Foil, Breather Fabric, Bagging Film & Sheets of Honeycomb

PORTABLE PAINT FILTER SYSTEMS



- (3) 2014 Mannix Paint Finishing Systems Mdl MAX-EC-10-7-30 Portable Paint Filter Systems, 11-1/2' Tall x 10' Long, 1.5-HP Fan Motor

FIREPROOF CABINETS



- (10) Eagle 45-Gallon 2-Door Fireproof Cabinets
- (5) 60-Gallon 2-Door Fireproof Cabinets
- Eagle 90-Gallon 2-Door Fireproof Cabinet
- (5) 4 & 30-Gallon Fireproof Cabinets
- Several 1 & 5-Gallon Chemical Safety Cans
- (10) Overnight Rag Cans

CHEMICALS & SHOP SUPPLIES

Good Selection of Chemicals to Include Mobil Synthetic Wheel Bearing Grease, Aeroshell Grease, Resin & Epoxy Grease, Araldite Adhesive, Araldite Hardener, Loctite, Paint Hardener, Aircraft Paint, LPS Lubricant, Ardrex, Corrosion Inhibitor, Spray Paint & Zinc Primer, Sky Kleen Aviation Solvent, Aircraft Detergent, Silica Gel, Methanol, Various Cleaning Supplies, Spray Bottles, Sealant, Plasti Weld, Etc.

(5) Cases of 2380 Turbo Oil & Mobil Jet Oil

Very Large Selection of Plastic & Cardboard Bins/Parts Boxes

Large Selection of Shop Supplies to Include Drill Bits, Reamers, Safety Wire, Nylon & Brass Brushes, Foam Brushes, Paint Scrapers, Parts Bags, Static Shield Bags, Zip Ties, Ear Plugs, Safety Wipes, Paper Mixing Cups, Sanding Discs, Buffing Discs, Sandpaper Discs of Various Grit, Grinding Wheels, Cleaning Cloths, Scotch Brite Pads, Disinfectants, Eye Wash Station Kits, Foil Tape, Masking Tape, Foam Tape, Box Tape, Paint Suits, Latex Gloves, Respirator Masks, Rain Gear, Plastic Paint Cups, Rolls of Plastic Sheeting, Oil Dry, First Aid Kits, Bubble Wrap, Etc.

BENCHES & SHELVING

(4) 6' X 36" Wood Top Avionics Repair Benches w/Outlets

(50+) Shop Tables, Various Lengths, Wood & Metal

Down Draft Tables

(15+) Roll Around Shop Tables 4' x 6"

Several 100 Feet of 24" Rivet Rack Parts Shelving

(250+) Feed of Grey Metal Shelving 12" to 20" Depths

100's of Feet of 36" & 42" Deep Pallet Racking, Various Heights

Good Selection of Rubbermaid Shelving, Various Sizes

(20+) Rubbermaid & Steel Parts Carts

PVC Control Surface Racks

Shop Built Cantilever Style Rack/Carts

Good Selection of Wood Shelving

6' Folding Tables

Dock Carts

(20+) 2-Door Metal Cabinets

RAW STOCK & HANGAR MAINTENANCE SUPPLIES

Full & Partial Sheets of Stainless Steel, 7075 Aluminum, 6061-T6, 2024-T3, Steel Screen, Lexan Plexiglass, Plate Steel, 6061-T4, Mild Steel, Etc.

Steel Tubing, Angle, Flat & Square Box Stock, 4' to 24' Lengths

Spools of Cable

2' x 4' Wood Framers, 16' Long

4' x 8' Sheets of Plywood, Various Widths

Pallets of 7/16 OSB Plywood

Spools of Electrical Wire

Rubber Wall Base

Exit Signs

Saw Horses

Good Selection of Railroad Ties, 4' Lengths

Rubber Caution Cones

Sign Pedestals

Airline Fittings

Hardware

Electrical Plugs

Very Large Selection of Wood Crates

Metal & Plastic Aircraft Component Shipping Boxes

DESKS, OFFICE EQUIPMENT & COMPUTERS



(10) Executive Desk Sets w>Returns & Credenzas

13' Wood Conference Table

10' Wood Conference Table

Large Selection of Metal & Wood Office Desks, Some w>Returns

Bookshelves

Several 42" Round Pedestal Desks

Leather Love Seat & Couch

Wicker Rockers & End Tables

Glass Top Coffee Table & End Tables

High Speed Color Copier

(3) Bar Stools

Cherry Dining Table w/4 Chairs

Proscan 32" Flat Screen TV w/DVD Player

End Table Lamps

(2) Queen Bed Sets w/Frames

Vacuum Cleaners

HP Intel Core 2 Computer

Dell Power Edge 1750 Server

Acer Power Series Computer

(3) Dell Optiplex 760 Computer

Dell Optiplex GX620 Computer

(2) Dell Optiplex GX400 Computers

(11) IBM/Lenovo Think Center Computer

(3) Server Stands

Behringer 45 Watt PA System

Xerox Work Center 5150 High Speed Color Copier

Minolta Dialta Super G3 High Speed Copier

Xerox Work Center 7515 High Speed Color Copier

HP 220 Inkjet Printer

Brother MFC-7840W 3-N-1 Machine

HP Laserjet 1022N Printer

HP Office Jet KX80X 3-N-1 Machine

Dell 2335dn 3-N-1 Machine

Computer Battery Backups

Epson PowerLite 73C Portable Overhead Projector

Laptop Bags

Ice-O-matic Commercial Ice Maker

(3) Refrigerator Freezers

(6) Microwaves

(2) Bunn Commercial Coffee Makers

Hot Plates

Toaster Ovens

Electric Space Heaters

GE Side-by-Side Refrigerator/Freezer

Break Room Supplies

Good Selection of Aircraft Pictures & Artwork

Office Supplies, Staplers, Files, Pens, Etc.

Stacking Files

(40+) Leather High Back Office Chairs

Very Large Selection of Secretarial Chairs & Side Chairs

Folding Chairs

Shop Stools

(5) 48" Round Break Room Tables

Metal Stacking Chairs

Grease Boards

3 & 4-Drawer Fireproof File Cabinets

(15+) 5-Drawer Lateral File Cabinets

(40+) 2 & 4-Drawer File Cabinets

Very Large Selection of 3-Ring Binders

Trade Show Display Set

MANUALS

(200+) Manuals for Dornier 328, ATR42 & Cessna 208 to Include NDT, Component Maintenance, Maintenance Requirements, Structural Repair, Wiring Diagrams, Service Bulletins, Parts Catalogs, Course Training, Ground Ops, Vendor Documents, Maintenance Planning Documents, P&W & Honeywell Manuals, Etc.

AUCTIONEER'S NOTE: KNH Aviation Services, Inc. dba AvCraft Technical Services has filed Bankruptcy. Therefore, Starman Bros. Auctions, Inc. has been contracted by the Bankruptcy Trustee to liquidate all assets at Public Auction. This Auction will include a very good selection of Inventory for ATR 42/72 & Dornier Aircraft as well as a large selection of Tools, Equipment, Vehicles and very good Office Equipment.

Everything sells "AS IS, WHERE IS" with no warranties implied or expressed. Neither the auctioneer nor owners shall be liable for any incorrect description, fault, or defect. Everything positively sells to the highest bidder. Payment must be made in full day of sale. No property removed until settled for. Auctioneer is not responsible for accidents or stolen property. All counts are approximate. Announcements made day of sale takes precedence over all printed material.

PAYMENT TERMS: Cash, Certified Funds, or Company Check ONLY if accompanied by Bank Letter of Guarantee!! NO EXCEPTIONS! Wire Transfers will be accepted with a 20% non-refundable deposit day of sale in one of the forms listed above. We also accept MasterCard and Visa with an additional 3% Buyers Premium applicable.

PROXY BIDS: If you are unable to attend this auction we will bid on your behalf. For more info visit our web site at www.starmanauctions.com and click on Upcoming Auctions and scroll down to the Proxy Bid Section. Complete form and fax to (402) 592-2327 or call Steve at (402) 681-6456.

LOADING & REMOVAL: Once an item is sold the winning bidder is responsible for its removal. Any cost responsibility and risk of removal of purchases remain with the buyer. Removal may begin after payment in full and must be completed by the posted deadlines. NO EXCEPTIONS OR EXTENSIONS! There may be various trucking companies on site to arrange for transportation. However, it will be the buyer's responsibility to arrange their own trucking.

GO TO WWW.STARMANAUCTIONS.COM FOR PHOTOS ON EQUIPMENT & INVENTORY LISTINGS

STARMAN BROS. AUCTIONS INC.

1240 Royal Drive ~ Papillion, NE 68046
(402) 592-1933 FAX: (402) 592-2327
www.starmanauctions.com