



The Professional Video

SourceBook

Section 1c

CAMERA ACCESSORIES

SageMAX.....201

Electrophysics.....202-203

DSC Labs.....204-209

Production Accessories.....210

Datavideo, nNova211

Focus Enhancements.....212-215

Transvideo.....216

IDX216

Ewa-Marine.....217

Amphibico218-221

Equinox.....222

Gates223-229

Light & Motion229

Obtaining information and ordering from B&H is quick and easy. When you call us, just punch in the corresponding Quick Dial number anytime during our welcome message. The Quick Dial code then directs you to the specific professional sales associates in our order department.

 For Section 1C, Camera Accessories
use Quick Dial #: 821

SAGEMAX

Extended Warranties

There are warranties, and then there are warranties. The SAGEMAX Protection Plan, from NEW, is more than a repair service; it is peace of mind. The SAGEMAX Protection Plan covers your optics, pro audio, pro video, & lighting equipment from failures due to normal wear-and-tear, defect in material and/or workmanship, mechanical and/or electrical breakdowns, power surges, as well as accidental damage from handling. Other benefits include free 2-way shipping to NEW's service facilities, free 24/7 toll-free phone support, price protection, and zero out-of-pocket expenses.



FEATURES

Free 2-Way Shipping

It's simple and easy: call NEW, get a call number, call UPS, and UPS will come to you to pick up the item.

Free 'Lemon' Protection

If your item is sent for repair three times, NEW will not attempt to fix it a fourth time; they will replace it!

Free In-House Repair Service

If the original manufacturer warranty covers in-house repair service, NEW will honor it for the 5-year duration of this warranty.

3-Year Plans

For Equipment Valued at...

\$2750 - \$2999.99 (Mfr # SCS3-2750 • B&H # NESCS32750)	364.99
\$3000 - \$3999.99 (Mfr # SCS3-3000 • B&H # NESCS33000)	414.99
\$4000 - \$4999.99 (Mfr # SCS3-4000 • B&H # NESCS34000)	464.99
\$5000 - \$5999.99 (Mfr # SCS3-5000 • B&H # NESCS35000)	514.99
\$6000 - \$6999.99 (Mfr # SCS3-6000 • B&H # NESCS36000)	564.99
\$7000 - \$7999.99 (Mfr # SCS3-7000 • B&H # NESCS37000)	614.99
\$8000 - \$8999.99 (Mfr # SCS3-8000 • B&H # NESCS38000)	664.99
\$9000 - \$9999.99 (Mfr # SCS3-9000 • B&H # NESCS39000)	714.99
\$10000 - \$14999.99 (Mfr # SCS3-10000 • B&H # NESCS310000)	879.99
\$15000 - \$19999.99 (Mfr # SCS3-15000 • B&H # NESCS315000)	1199.99
\$20000 - \$24999.99 (Mfr # SCS3-20000 • B&H # NESCS320000)	1599.99
\$25000 - \$29999.99 (Mfr # SCS3-25000 • B&H # NESCS325000)	1999.99
\$30000 - \$34999.99 (Mfr # SCS3-30000 • B&H # NESCS330000)	2399.99
\$35000 - \$39999.99 (Mfr # SCS3-35000 • B&H # NESCS335000)	2799.99
\$40000 - \$44999.99 (Mfr # SCS3-40000 • B&H # NESCS340000)	3199.99
\$45000 - \$49999.99 (Mfr # SCS3-45000 • B&H # NESCS345000)	3599.99

5-Year Plans

For Equipment Valued at...

\$2750 - \$2999.99 (Mfr # SCS5-2750 • B&H # NESCS52750)	729.98
\$3000 - \$3999.99 (Mfr # SCS5-3000 • B&H # NESCS53000)	829.98
\$4000 - \$4999.99 (Mfr # SCS5-4000 • B&H # NESCS54000)	929.98
\$5000 - \$5999.99 (Mfr # SCS5-5000 • B&H # NESCS55000)	1029.98
\$6000 - \$6999.99 (Mfr # SCS5-6000 • B&H # NESCS56000)	1129.98
\$7000 - \$7999.99 (Mfr # SCS5-7000 • B&H # NESCS57000)	1229.98
\$8000 - \$8999.99 (Mfr # SCS5-8000 • B&H # NESCS58000)	1329.98
\$9000 - \$9999.99 (Mfr # SCS5-9000 • B&H # NESCS59000)	1429.98
\$10000 - \$14999.99 (Mfr # SCS5-10000 • B&H # NESCS510000)	1759.98
\$15000 - \$19999.99 (Mfr # SCS5-15000 • B&H # NESCS515000)	2399.98
\$20000 - \$24999.99 (Mfr # SCS5-20000 • B&H # NESCS520000)	3199.98
\$25000 - \$29999.99 (Mfr # SCS5-25000 • B&H # NESCS525000)	3999.98
\$30000 - \$34999.99 (Mfr # SCS5-30000 • B&H # NESCS530000)	4799.99
\$35000 - \$39999.99 (Mfr # SCS5-35000 • B&H # NESCS535000)	5599.99
\$40000 - \$44999.99 (Mfr # SCS5-40000 • B&H # NESCS540000)	6399.99
\$45000 - \$49999.99 (Mfr # SCS5-45000 • B&H # NESCS545000)	7199.99

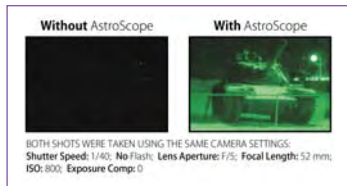
ASTROSCOPE

Night Vision Videography

"Night Vision" is the technology that provides the miracle of vision in total darkness and the improvement of vision in low light environments. Today, the most popular and well known method of performing night vision is based on the use of image intensifiers. Image intensifiers are commonly used in night vision goggles and night scopes.

HOW THEY WORK:

This method of night vision amplifies the available light to achieve better vision. An objective lens focuses available light (photons) on the photocathode of an image intensifier. The light energy causes electrons to be released from the cathode which are accelerated by an electric field to increase their speed (energy level). These electrons enter holes in a microchannel plate and bounce off the internal specially-coated walls which generate more electrons as the electrons bounce through. This creates a denser "cloud" of electrons representing an intensified version of the original image.



The final stage of the image intensifier involves electrons hitting a phosphor screen. The energy of the electrons makes the phosphor glow. The visual light shows the desired view to the user or to an attached photographic camera or video device. A green phosphor is used in these applications because the human eye can

differentiate more shades of green than any other color, allowing for greater differentiation of objects in the picture.

All image intensifiers operate in the above fashion. Technological differences over the past 40 years have been commonly identified by distinct generations of image intensifiers. Intensified camera systems usually incorporate an image intensifier to create a brighter image of the low-light scene which is then viewed by a traditional camera.

Advantages

- Excellent low-light level sensitivity
- Enhanced visibility yields the best possible recognition and identification performance.
- High resolution; Low power and cost
- Ability to identify people

Disadvantages

- Some light is required. This method is not useful when there is essentially no light.
- Inferior daytime performance when compared to daylight-only methods
- Possibility of blooming when observing bright sources under low-light conditions.

AstroScope 9323B-3N

The ultimate night vision module. At its heart is the image intensifier, transforming dark, moonlit or starlit nights (below 10^{-4} lux) into bright, high-resolution scenes that can be seen through the viewfinder and easily recorded. Mounted between the camera and the lens, it dramatically extends the camera's usable light range by 8 to 10 f-stops, turning any 2/3" bayonet-mount ENG/EFP, it requires no set-up, calibration or training. The module maintains full electronic control of the lens iris and zoom and draws minimal power from the camera battery via the lens cable connection. The sturdy design of the AstroScope 9323B-3N enables it to support the weight of the heaviest objective lenses.



Easy-to-Use

- 1) Remove the objective lens and disconnect the lens cable from the camera body.
- 2) Attach the 93B-Series to the camera's B4 lens mount and plug the module's lens/power cable into the camera's lens jack.
- 3) Re-attach the objective lens to the front of the AstroScope 93B and plug the lens cable into the module's lens jack. You are ready for nighttime or low-light video recording!

9323B: Gen 3 PRO Night Vision Adapter for 2/3" ENG/EFP cameras with B-4 bayonet mount. Weighs 23 oz. (Mfr # 914415 • B&H # ASNVAENG)**8798.95**

ASTROSCOPE 9350BRAC

Night Vision Lens for Sony, Panasonic and Canon Camcorders with Fixed Lens

The AstroScope 9350BRAC is a high-performance night vision module that incorporates a state-of-the-art image intensifier to transform dark scenes below 10^{-4} lux into bright, high-resolution imagery. Specifically designed for Sony, Panasonic and Canon camcorders to produce high quality, high resolution video under very demanding conditions, the heart of the 9350BRAC is the Central Intensifier Unit (CIU). AstroScope's modular design enables you to expand your capabilities by allowing you to easily transfer the image intensifier to other platforms including Canon and Nikon SLR cameras, removable-lens camcorders like the Canon XL2 and the Canon XL-H1 high definition video camera, C-mount CCTV cameras, and a versatile handheld scope.



For Canon XH-G1 (Mfr # 914762 • B&H # ASNVBCXHG1), Panasonic AG-HVX200 (Mfr # 914784 • B&H # ASNVBPAGHVX2), AG-DVX100/A/B (Mfr # 914759 • B&H # ASNVBPAGDVX1), Sony HVR-SR1 (Mfr # 999912 • B&H # ASNVBSHDRSR1), HVR-A1U (Mfr # 914769 • B&H # ASNVBSHVRA1U)**5800.00**

For Sony PD-170 (Mfr # 9350BRAC-PD-3PRO • B&H # ASNVBSPD150), HVR-Z1U (Mfr # 9350BRACZ1U3PRO • B&H # ASNVBSHVRZ1U), Canon GL2 (Mfr # 9350BRAC-GL2-3PRO • B&H # ASNVBCGL2).....**5399.95**

9350XL-3 Night Vision Lens for Canon

Electrophysics combines Canon's XL-1/s and XL2 MiniDV camcorder featuring a optically stabilized 20x zoom lens and the 9300-XL Astroscope into a highly versatile evidence capture system designed to enable long range surveillance 24 hours a day. The kit incorporates state-of-the-art Gen III Pinnacle intensifier for the highest performance with reduced halos and increased contrast. Using the 16x zoom lens and 2x digital magnification will yield an easily identifiable image at 300 yards – day or night. The entire system is supplied in a Pelican case for security and safety. For missions where range is critical, the XL2 can use any EOS SLR photo lens using the XL-EOS adapter. The effect is to increase the focal length of any lens by 7.2x. Using the 100-400mm lens on the XL2 gives an effective focal length of 720-2880mm (35mm equivalent) allowing you to record identifiable images more than a 1/2 mile away.



- ◆ Retains IS (image stabilization) function
- ◆ Minimal or no vignetting
- ◆ Power derived from camera's power source
- ◆ No backfocus adjustments needed (lenses focus normally)
- ◆ Speedy installation
- ◆ Brightness increase of 10 to 12 stops

AstroScope 9350XL-3PRO (Mfr # 914657 • B&H # ASNVACXL): Gen 3 PRO Night Vision adapter for Canon XL Series camcorders**5849.95**

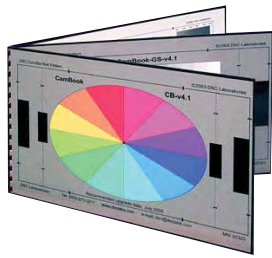
B.E. Meyers Prowler 4300i

Prowler 4300i: The multi-purpose 4300i Prowler scope uses Gen III light amplification tubes within an aluminum body. It incorporates an internal "flood light illuminator" that allows night viewing up to 200'. The Prowler 745A supplies the necessary relay and camcorder bracket required to mount the Prowler vision scope to your camcorder. (Mfr # 4300i • B&H # BE4300i).....**2995.00**

Relay and Bracket for Camcorders

For HVR-Z1U (Mfr # 745AZ1U • B&H # BE745AZ1U)**779.95**
 For HVR-V1U (Mfr # 745AV1U • B&H # BE745AV1U)**779.95**
 For HVR-A1U (Mfr # 745AA1U • B&H # BE745AA1U)**779.95**

CAMBOOK



The Economical and Versatile Book of Charts

CamBook is DSC Lab's economical and versatile book of charts that fit in your briefcase. If you're on-the-go and involved in HD, SD or film production, you'll find CamBook invaluable. CamBook offers many of the benefits of regular CamAlign charts, at a price that makes it affordable for even the smallest productions. Like regular CamAligns, CamBook charts are wide dynamic range and washable. While regular CamAligns are mounted on aircraft aluminum, light weight CamBook charts are mounted on environmentally-friendly composite material.

All charts offer 16:9 and 4:3 framing and include a vinyl folder. Manufactured to slightly wider tolerances than regular CamAligns, CamBooks are batch— not individually calibrated.

CamBook 4 (Four Charts):

- ◆ 6 primary colors and 11 step spectrophotometrically neutral grayscale on one chart makes lining up/matching cameras to a waveform monitor and vectorscope a breeze. Shooting this pattern at the head of each take will expedite customization and correction in post.
- ◆ Multiburst lens resolution testing pattern up to 800 TV LPPH helps maximize your lens options. Use to test existing lenses for chromatic aberration and other issues.
- ◆ Set critical back focus using DSC's unique Backfocus Star— an enhanced Siemens star pattern. Temperature changes are known to affect back focus - stay sharp by using the BackFocus Star on set and in testing.
- ◆ CamWhite (spectrophotometrically neutral white reference). This accurate white balance card should be the only source you ever use to white balance your cameras.

CamBook 4 (Mfr # CK4 • B&H # DSCK4).....**489.95**

CamBook 5 (Five Charts):

- ◆ Same as CamBook 4 except it offer DSC's 12 primary colors and 11 step spectrophotometrically neutral grayscale on two separate charts.

(Mfr # CK5 • B&H # DSCK5)**589.95**

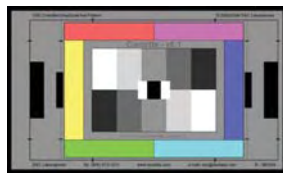
CamBook 6 (Six Charts):

- ◆ Same as CamBook 5 except it adds a sixth chart which includes a photo reference of the "CamBelles", a group of women with varying skin tones for use with skin-tone calibration on your camera.

(Mfr # CK6 • B&H # DSCK6)**649.95**

CamFocus

Use CamFocus to critically focus HD/SD video cameras, and to white balance accurately. Diminutive versions of DSC's regular CamAligns, CamFocus is the perfect accessory for video shooters, producers and DPs on the go - as well as for camera operators and engineers! Use CamFocus for critical focusing on the set and to white balance any television, video and digital camera. CamFocus cards consist of two surfaces of chart material laminated together back-to-back; DSC's unique extended "bow-tie" star and a "TrueWhite" white balance chip. The BackFocus star helps you "pop" cameras into focus, quickly and easily. Simply position the star next to the subject/talent's face, and adjust the camera to optimal sharpness. The "TrueWhite" chip helps you to make the most of a camera's alignment - and to reproduce skin tones and colors with accuracy.



Camette Handy, front and back



CamFocus Pocket: 6.25 x 3.75" active area, includes lanyard and protective pouch (Mfr # PCF • B&H # DSPCF)**64.95**

CamFocus Handy: 10 x 6" active area, includes lanyard and protective pouch (Mfr # HCF • B&H # DSHCF).....**79.95**

Camettes

Camettes feature a five step crossed grayscale to help optimize tonal reproduction and create richer-looking images, and six CamAlign primary colors with instructions on how to use the chart. There is also a CamWhite on the back for true white balancing.

Camette Pocket: 6.25 x 3.75" active area, includes lanyard and protective pouch (Mfr # PCE • B&H # DSPCE)**89.95**

Camette Handy: 10 x 6" active area, includes lanyard and protective pouch (Mfr # HCE • B&H # DSHCE)**149.95**

CAMALIGN FAMILY

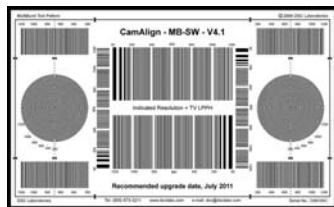
CamAlign is designed to optimize the performance of today's HD/SD cameras. Developed 10 years ago for the space program, CamAligns are now widely used in broadcasting and digital cinematography, both in camera alignment and as an on-the-set test targets. CamAligns are extremely accurate, high dynamic range, test charts that combine precision with practicality. Multi-purpose tool, they can be used in the lab to evaluate cameras; in the studio - to set-up and match cameras; on-the-set as a production test standard; in post production to optimize image quality.

CamAlign's unique smooth surface and wide dynamic range illuminates more consistently and provides true black levels typical of those in a scene. Reproduce grays faithfully through the entire tonal range, using "color-true" grayscale. Made using DSC technology, CamAlign grays are as close to spectrophotometrically neutral as possible. Match cameras quickly and easily to current ITU-R 709/SMPTE 274M colorimetry. All CamAligns (except FrontBox) include calibrations, simulations and instructions. Use the charts for quantitative evaluation using vectorscopes and waveform monitors. Ideal for the shop, studio, stadium and truck, CamAligns are available in combined HD/SD (16:9/4:3) or SD format in Maxi, Senior, Standard and Junior. Tough, easy-care charts go everywhere you go. Mounted on 1.6mm thick aircraft aluminum, they have protective flexible edging. Dust and fingerprints wipe off quickly with a damp cloth. Treated with a clear protective laminate, they are virtually weather proof - ideal for location shooting.

Patterns include crossed grayscales, ITU-R BT.709 vector colors, skin tones, multibursts, hyperbolics, flare and monitor registration and backfocus - in various combinations. All include operating instructions and except FrontBox Series include individual calibration sheets.

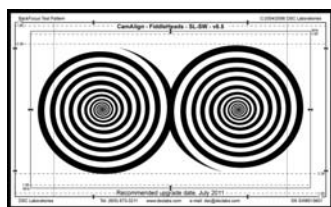
MultiBurst Focus Pattern Chart with Resolution

These charts are designed for calibrating the focus and resolution on your video camera. They feature resolution gratings up to 1200 TV LPPH (15MHz) for testing camera frequency response. Moreover, they offer zone plates up to 1200 TV LPPH (15MHz) for checking resolution characteristics and anti-aliasing.



10 x 17" Junior (Mfr # MBJ • B&H # DSMBJ)	399.95
13 x 21.3" Standard (Mfr # MBST • B&H # DSMBST)	444.95
14.7 x 24" Senior (Mfr # MBS • B&H # DSMBS)	529.95
24 x 40" Maxi (Mfr # MBM • B&H # DSMBM)	999.95
30.5 x 51.5" Super Maxi (Mfr # MBSM • B&H # DSMBSM)	1379.95

Fiddlehead Focus Pattern Charts



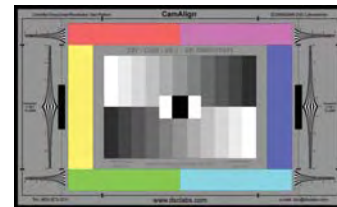
Designed for calibrating camera focus, the Fiddlehead (FH) was created in collaboration with Stephen Lucas. It features a decreasing radii spiral pattern that provides a visual "pop" at the precise point of optimum focus. Fiddlehead/Backfocus (FHR) adds

corner resolution wedges up to 1600 TV LPPH. Both FiddleHead patterns include motion picture framing lines for 2.35, 1.85 and 90% of 1.85.

FH 10 x 17" Junior (Mfr # FHJ • B&H # DSFHJ)	269.95
FH 13 x 21.3" Standard (Mfr # FHST • B&H # DSFHST)	294.95
FH 14.7 x 24" Senior (Mfr # FHS • B&H # DSFHS)	354.95
FH 30.5 x 51.5" Super Maxi (Mfr # FHSM • B&H # DSFHSM)	1099.95
FHR 14.7 x 24" Senior (Mfr # FHRS • B&H # DSFHRS)	429.95
FHR 24 x 40" Maxi (Mfr # FHSM • B&H # DSFHSM)	899.95
FHR 30.5 x 51.5" Super Maxi (Mfr # FHRS • B&H # DSFHRS)	1239.95

ColorBar/GrayScale CamAlign Chip Charts

These charts are designed for calibrating the color on your video camera—almost a necessity for optimizing camera performance and the production value of images. They include 6 vector primary colors, DSC 11-step crossed grayscales, and 100 IRE white and true black chips. Models with Resolution, include hyperbolic resolution wedges up to 1200 TV LPPH.



10 x 17" Junior (Mfr # CBGSJ • B&H # DSCBGSJ)	624.95
10 x 17" Junior with Resolution (Mfr # CGRJ • B&H # DSCGRJ)	689.95
13 x 21.3" Standard (Mfr # CBGSST • B&H # DSCBGSST)	689.95
13 x 21.3" Standard with Resolution (Mfr # CGRST • B&H # DSCGRST)	759.95
14.7 x 24" Senior (Mfr # CBGSS • B&H # DSCBGS)	829.95
14.7 x 24" Senior with Resolution (Mfr # CGRS • B&H # DSCGRS)	909.95
24 x 40" Maxi (Mfr # CBGSM • B&H # DSCBGS)	1249.95
24 x 40" Maxi with Resolution (Mfr # CGRM • B&H # DSCGRM)	1359.95
30.5 x 51.5" Super Maxi (Mfr # CBGSSM • B&H # DSCBGS)	1719.95
30.5 x 51.5" Super Maxi w/Resolution (Mfr # CGRSM • B&H # DSCGRSM) ..	1889.95

GrayScale CamAlign Chip Charts

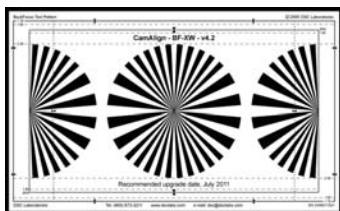
These charts include 11-step crossed grayscales and true black assist to attain optimal tonal reproduction and richer looking images. They also feature center true black with adjacent 100 IRE white chips.

10 x 17" Junior (Mfr # GSJ • B&H # DSGSJ)	439.95
13 x 21.3" Standard (Mfr # GSST • B&H # DSGSST)	499.95
14.7 x 24" Senior (Mfr # GSS • B&H # DSGSS)	599.95
24 x 40" Maxi (Mfr # GSM • B&H # DSGSM)	889.95
30.5 x 51.5" Super Maxi (Mfr # GSSM • B&H # DSGSSM)	1199.95

CAMALIGN FAMILY

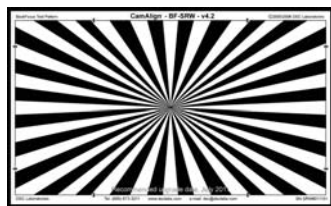
BackFocus (BF)

Invaluable for HDTV and digital film production, these charts feature an exceedingly high dynamic range with brilliant white and dense black shades. Unique bow-tie stars and demi-stars are also included to help set critical center and edge focus parameters.



10 x 17" Junior (Mfr # BFJ • B&H # DSBFJ)	239.95
13 x 21.3" Standard (Mfr # BFST • B&H # DSBFST)	269.95
14.7 x 24" Senior (Mfr # BFRS • B&H # DSBFRS)	319.95
24 x 40" Maxi (Mfr # BFM • B&H # DSBFM)	714.95
30.5 x 51.5" Super Maxi (Mfr # BFSM • B&H # DSBFSM)	989.95

BackFocus Expanded (BFX)

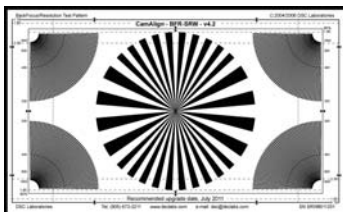


These charts feature an oversized and expanded bow-tie star with (56) crisp and sharp wedges for setting critical focus. It also offers an exceedingly high dynamic range with brilliant white and dense black shades.

10 x 17" Junior (Mfr # BFXJ • B&H # DSBFXJ)	239.95
13 x 21.3" Standard (Mfr # BFXST • B&H # DSBFXST)	269.95
14.7 x 24" Senior (Mfr # BFXS • B&H # DSBFXS)	319.95
24 x 40" Maxi (Mfr # BFXM • B&H # DSBFXM)	719.95
30.5 x 51.5" Super Maxi (Mfr # BFXSM • B&H # DSBFXSM)	989.95

BackFocus and Resolution (BFR)

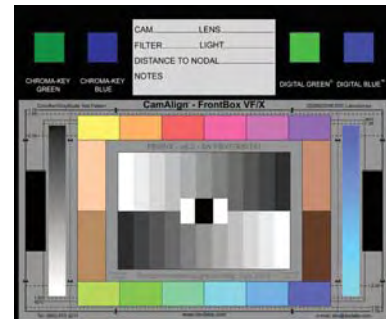
Invaluable HD tool, these charts features an exceedingly high dynamic range with brilliant white and dense black shades. Unique bow-tie stars and demi-stars are also included to help set critical center and edge focus parameters. It also offers corner resolution wedges up to 1600 TV LPPH (20MHz) for checking camera frequency response and lens quality. Moreover, a frame and focus chart is included for projector alignment



10 x 17" Junior (Mfr # BFRJ • B&H # DSBFRJ)	289.95
13 x 21.3" Standard (Mfr # BFRST • B&H # DSBFRST)	319.95
14.7 x 24" Senior (Mfr # BFRS • B&H # DSBFRS)	389.95
24 x 40" Maxi (Mfr # BFRM • B&H # DSBFRM)	819.95
30.5 x 51.5" Super Maxi (Mfr # BFRSM • B&H # DSBFRSM)	1,124.95

FrontBox CamAligns

Easy to use, instructions and on-chart checklists for suggested use enable many kinds of users to enjoy the full benefit of DSC's FB charts. Chart output is easily interpreted on familiar waveform and vectorscope displays, both in camera set-up and post. These compact double-sided charts save time and storage space, and are economically priced for tight budgets.



Essential tools for HD, use FrontBox charts to match your camera's set-up with your project's distribution mechanism. Wide dynamic range grayscale on FB charts generate consistent signals more representative of those found in real-life. Reproduce grays faithfully through the entire tonal range, using "color-true" grayscale. Made with DSC unique technology grayscale steps are spectrophotometrically neutral. Match and "paint" cameras, they use the latest ITU-R BT.709/SMPTE 274M reference primaries in all its test products. All FB models feature DSC's extended BackFocus pattern. This unique "bowtie" star is an ideal tool for checking/setting camera BackFocus. When captured on tape or film, DSC's BackFocus pattern also functions as a convenient "frame and focus" chart for HD.

Like regular CamAligns, FB Series Charts are wide dynamic range and washable. While regular CamAligns are mounted on aircraft aluminum, light weight FrontBox charts are plastic-mounted. Manufactured to slightly wider tolerances than regular CamAligns, production-oriented FB charts do not include individual calibrations.

FB College: 11-step DSC grayscale and true blacks for optimal tonal reproduction, richer-looking images. Center 100 IRE chip with adjacent true blacks. Framing aperture for 16:9 and 4:3 (Mfr # FBC • B&H # DSFBC)

119.95

FB Standard: Six vector colors and 11-step DSC grayscale. Framing apertures for 16:9 (1.77, 90 and 100%), and widescreen film formats 1.85 (90 and 100%) and 2.35 (100%) (Mfr # FBS • B&H # DSFBS)

269.95

FB Professional: Six vector colors, 11-step DSC grayscale and four skin tones, for improved skin reproduction. Framing apertures for 16:9 (1.77, 90 and 100%), and widescreen film formats 1.85 (90 and 100%) and 2.35 (100%) (Mfr # FBP • B&H # DSFBP)

299.95

FB 12+4: Six vector colors plus six intermediate, plus four skin tones and 11-step DSC grayscale. Framing apertures for 16:9 (1.77, 90 and 100%), and widescreen film formats 1.85 (90 and 100%) and 2.35 (100%) (Mfr # FB12+4 • B&H # DSFB12P4)

429.95

FB VF/X Visual Effects FrontBox

Most of the features in FB 12+4 plus, Skyblue and Grayscale ramp to test for banding. Four popular keying test colors - ChromaKey Green and Blue also Digital Green and Digital Blue

(Mfr # FBVFX • B&H # DSFBVFX)

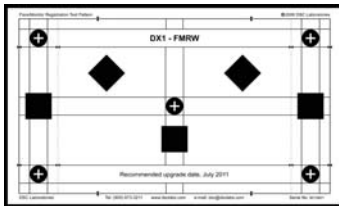
514.95

COMBI DX-1

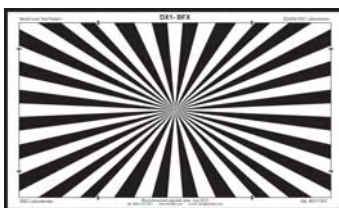
Combination of Test Elements



Combi MultiBurst DX-1 Window Calibration Chart: Features a white aperture square on a black background. It can be used to troubleshoot over-shooting and under-shooting issues, streaking and smearing, and chromatic aberrations. (B&H# DSCDX1WC) **119.95**



Combi DX-1 Flare/Monitor Registration Chart: This model is designed for use with flare and monitor registration. It features strategically placed black-on-white patches of different shapes to help identify flare problems. A registration grid and white crosses on black buttons is included to help calibrate monitor linearity. (B&H# DSCDX1FMR)..... **239.95**



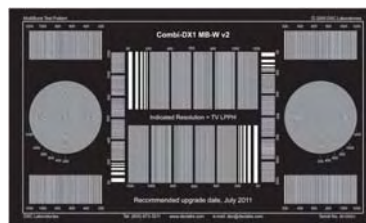
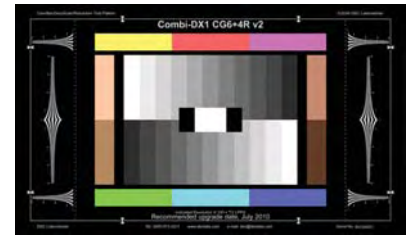
Combi DX-1 BackFocus: Designed for use with HDTV and digital film production and features an updated version of the Siemens star pattern. It offers exceedingly high dynamic range with unique bow-tie stars. Stars and demi-stars are also included for setting critical center and edge focus on your camera. (B&H# DSCDX1BF) **289.95**

Combi DX-1 Gray Calibration Chart: This model is designed for use with grayscale calibration. It features an 18% gray field. (B&H# DSCDX1G) **299.95**

Featuring a "Combi" nation of test elements, Combis save time and are easier on the budget. Combis are easier to use because they are precision "Optical Signal Generators" (OSGs) that produce waveform and vectorscope displays designed to mimic standard electronic test signals. Designed for HD, Combis can also be used in aligning older cameras using the include 4:3 framing "bowties". When recorded to tape or film, Combis provide the ultimate on-scene-reference for optimizing image quality in post.

Customizing a state-of-the-art electronic printing process Combi-DX1 provide Improved color stability, spectrophotometrically neutral grayscales, and selected color pigments with spectral characteristics that complement real life colors, and modern camera colorimetry.

Note: These charts are designed for use with the Ambi Illuminator, although separately available CombiMattes may be purchased to ensure your Combi chart fits a light box or spherical illuminator from another manufacturer.

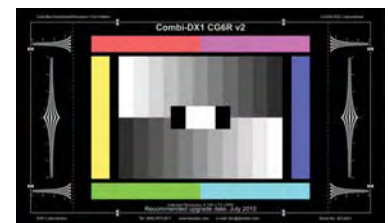


MultiBurst DX-1 White on Black Calibration Chart: This model features ramped resolution gratings up to 1200 TV LPPH (15MHz) for testing camera frequency response. Zone plates up to 1200 TV LPPH (15MHz) allow you to check resolution characteristics and anti-aliasing. Patterns are white on a black background. (B&H# DSCDX1MBWB) **424.95**

MultiBurst DX-1 Black on White Calibration Chart: Same as above, except patterns are black on a white background. (B&H# DSCDX1MBBW) **424.95**

Combi ColorBar/GrayScale (DX-1 CGR): This chart features 6 vector colors, 11-step crossed grayscales, 100 IRE white, and 2 SuperWhites with true black chips. Hyperbolic resolution wedges up to 1200 TV LPPH (15MHz) are also included. (B&H# DSCDX1CGR)..... **999.95**

Combi ColorBar/GrayScale (DX-1 CGR-4R): Same as above, plus 4 skin tone patches. (B&H# DSCDX1CGRS4R) **1,049.95**



ChromaDuMonde (DX-1 CDM 12R): This model features 12 color chips to create a distinctive hexagonal vectorscope display. It offers 11-step crossed grayscales, 100 IRE white, and 2 SuperWhites with true black chips. Hyperbolic resolution wedges up to 1200 TV LPPH (15MHz) are also included. (B&H# DSCDX1CDM12R) **1129.95**

ChromaDuMonde (DX-1 CDM 12+4R): Same as above, plus 4 skin tone patches. (B&H# DSCDX1CDM124) **1224.95**

ChromaDuMonde (DX-1 CDM 24R): This model features 24 color chips to create a distinctive hexagonal vectorscope display. It offers 11-step crossed grayscales, 100 IRE white, and 2 SuperWhites with true black chips. Hyperbolic resolution wedges up to 1200 TV LPPH (15MHz) are also included. (B&H# DSCDX1CDM24R) **1369.95**

ChromaDuMonde (DX-1 CDM 24+4R): Same as above, plus 4 skin tone patches. (B&H# DSCDX1CDM244) **1439.95**

CHROMADUMONDE

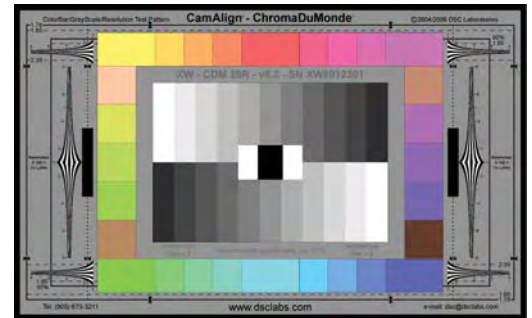
The "Impossible" Color Chip Chart

Many video professionals consider calibration charts a necessity for optimizing camera performance and the production value of images. All DCS Labs' charts are designed with that philosophy in mind and work equally well in engineering or production work. They can be used to evaluate a camera's color matrix and gamma with a waveform/vectorscope. A chart can be particularly useful in reproducing skin tones, as well as custom or difficult colors, such as turquoise, purple, and other colors which occur at prism crossovers. It can also be used to check and adjust cameras on the fly and immediately gauge the effect of any hue changes on surrounding colors. This feature can be especially useful when using "green screens" or other digital special effects.

Designed for calibrating color with virtually any video camera throughout the world, ChromaDuMonde (Colors of the World) are high performance charts made to the latest SMPTE 274M (ITU-R BT.709) international colorimetry standards. Whether used in production or in post, ChromaDuMonde charts generate precise hexagonal-shaped displays for HD, SD and NTSC television images. After gamma is set using the charts' precise crossed grayscale, colorimetry can be set by positioning the charts' 24 color signals in their HD vectorscope boxes and intermediate positions. While designed primarily for HD TV calibrated offsets are provided for the purists who want to know the theoretical colorimetric differences between HD and NTSC for example.

They provide precise information about how camera hue adjustments are affecting the full gamut of color reproduction. Image quality and consistency can be enhanced by recording chart information to tape or film, and using it in post as a baseline production reference. For scene-to-scene consistency, record a few chart frames with every lighting change - to facilitate/accelerate color-correcting, matching footage, and digital/special effects. Chart information provides a foundation for users' creativity and innovation.

All ColorDuMonde charts feature separation between the grayscale and color bars suggested by Steve Lucas, as well as DSC Labs' exclusive watermarked title and serial bar.



Junior Charts — 10 x 17"

ChromaDuMonde 12 Junior:

Includes 6 vector colors and 6 intermediate between-vector colors. It also features 11-step crossed grayscale and 100 IRE white and true-black chips.

(Mfr # CDM12J • B&H # DSCDM12J)**689.95**

ChromaDuMonde 12+ 4 Junior:

Sames as above, plus 4 skin-tone patches.

(Mfr # CDM12+4J • B&H # DSCDM124J)**754.95**

ChromaDuMonde 12-R Junior:

Includes 6 vector colors and 6 intermediate between-vector colors. It offers 11-step crossed grayscales and 100 IRE white and true-black chips. It also offers hyperbolic resolution trumpets.

(Mfr # CDM12RJ • B&H # DSCDM12RJ)**759.95**

ChromaDuMonde 12+ 4R Junior:

Sames as above, plus 4 skin-tone patches.

(Mfr # CDM12+4RJ • B&H # DSCDM124RJ)**829.95**

ChromaDuMonde 24 Junior:

Includes 6 vector colors and 18 evenly spaced intermediate colors. It also features 11-step crossed grayscales and 100 IRE white and true-black chips.

(Mfr # CDM24J • B&H # DSCDM24J)**799.95**

ChromaDuMonde 24-R Junior:

Same as above, plus it offers hyperbolic resolution trumpets.

(Mfr # CDM24RJ • B&H # DSCDM24RJ)**879.95**

ChromaDuMonde 28 Junior:

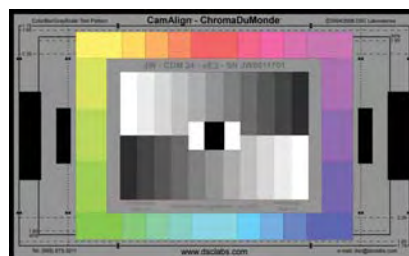
Includes 6 vector colors and 18 evenly spaced intermediate colors. It also features 11-step crossed grayscales and 100 IRE white and true-black chips. Additionally, it offers 4 skin-tone patches.

(Mfr # CDM28J • B&H # DSCDM28J)**844.95**

ChromaDuMonde 28-R Junior:

Same as above, plus it offers hyperbolic resolution trumpets.

(Mfr # CDM28RJ • B&H # DSCDM28RJ)**929.95**



Standard Charts — 13 x 21.3"

ChromaDuMonde 12 Standard:

Includes 6 vector colors and 6 intermediate between-vector colors. It also features 11-step crossed grayscales and 100 IRE white and true-black chips.

(Mfr # CDM12 • B&H # DSCDM12ST)**764.95**

ChromaDuMonde 12+4 Standard:

Sames as above, plus 4 skin-tone patches.

(Mfr # CDM12+4ST • B&H # DSCDM124ST)**839.95**

ChromaDuMonde 24 Standard:

Includes 6 vector colors and 18 evenly spaced intermediate colors. It also features 11-step crossed grayscales and 100 IRE white and true-black chips.

(Mfr # CDM24ST • B&H # DSCDM24ST)**889.95**

ChromaDuMonde 24 -R Standard:

Same as above, plus hyperbolic resolution trumpets.

(Mfr # CDM24RST • B&H # DSCDM24RST)**979.95**

ChromaDuMonde 28 Standard:

Same as ChromaDuMonde 24 Standard, plus offers 4 skin-tone patches.

(Mfr # CDM28ST • B&H # DSCDM28ST)**929.95**

ChromaDuMonde 28 -R Standard:

Same as above, plus it offers hyperbolic resolution trumpets.

(Mfr # CDM28RST • B&H # DSCDM28RST)**1029.95**

CHROMADUMONDE

Senior Charts — 14.7 x 24"

ChromaDuMonde 12 Senior:

Includes 6 vector colors and 6 intermediate between-vector colors. It also features 11-step crossed grayscale and 100 IRE white and true-black chips.

(Mfr # CDM12S • B&H # DSCDM12S) **919.95**

ChromaDuMonde 12+ 4 Senior :

Sames as above, plus 4 skin-tone patches.

(Mfr # CDM12+4S • B&H # DSCDM124S) **999.95**

ChromaDuMonde 12-R Senior:

Includes 6 vector colors and 6 intermediate between-vector colors. It offers 11-step crossed grayscale and 100 IRE white and true-black chips. It also offers hyperbolic resolution trumpets.

(Mfr # CDM12RS • B&H # DSCDM12RS) **1009.95**

ChromaDuMonde 12+ 4R Senior:

Same as above, plus 4 skin-tone patches.

(Mfr # CDM12+4RS • B&H # DSCDM124RS) **1099.95**

ChromaDuMonde 24 Senior:

Includes 6 vector colors and 18 evenly spaced intermediate colors. It also features 11-step crossed grayscale and 100 IRE white and true-black chips.

(Mfr # CDM24S • B&H # DSCDM24S) **1064.95**

ChromaDuMonde 24 -R Senior:

Same as above, plus it offers hyperbolic resolution trumpets.

(Mfr # CDM24RS • B&H # DSCDM24RS) **1169.95**

ChromaDuMonde 28 Senior:

Includes 6 vector colors and 18 evenly spaced intermediate colors. It also features 11-step crossed grayscale and 100 IRE white and true-black chips. Additionally, it offers 4 skin-tone patches.

(Mfr # CDM28S • B&H # DSCDM28S) **1099.95**

ChromaDuMonde 28-R Senior:

Same as above, plus it offers hyperbolic resolution trumpets.

(Mfr # CDM28RS • B&H # DSCDM28RS) **1239.95**

Maxi Charts — 24 x 40"

ChromaDuMonde 12 Maxi:

Includes 6 vector colors and 6 intermediate between-vector colors. It also features 11-step crossed grayscale and 100 IRE white and true-black chips.

(Mfr # CDM12M • B&H # DSCDM12M) **1366.95**

ChromaDuMonde 12+4 Maxi:

Same as above, plus 4 skin-tone patches.

(Mfr # CDM12+4M • B&H # DSCDM124M) **1499.95**

ChromaDuMonde 12-R Maxi:

Includes 6 vector colors and 6 intermediate between-vector colors. It also features 11-step crossed grayscale and 100 IRE white and true-black chips as well as hyperbolic resolution trumpets.

(Mfr # CDM12RM • B&H # DSCDM12RM) **1499.95**

ChromaDuMonde 12+4R Maxi:

Same as above, plus 4 skin-tone patches.

(Mfr # CDM12+4RM • B&H # DSCDM124RM) **1649.95**

ChromaDuMonde 24 Maxi:

Includes 6 vector colors and 18 evenly spaced intermediate colors. It also features 11-step crossed grayscale and 100 IRE white and true-black chips.

(Mfr # CDM24M • B&H # DSCDM24M) **1589.95**

ChromaDuMonde 24 -R Maxi:

Same as above, plus it offers hyperbolic resolution trumpets.

(Mfr # CDM24RM • B&H # DSCDM24RM) **1749.95**

ChromaDuMonde 28 Maxi: Sames as above, plus 4 skin-tone patches.

(Mfr # CDM28M • B&H # DSCDM28M) **1634.95**

ChromaDuMonde 28 -R Maxi:

Same as above, plus it offers hyperbolic resolution trumpets.

(Mfr # CDM28R • B&H # DSCDM28R) **1844.95**

Super Maxi Charts —
30.5 x 51.5"**ChromaDuMonde 12 Super Maxi:**

Includes 6 vector colors and 6 intermediate between-vector colors. It also features 11-step crossed grayscale and 100 IRE white and true-black chips.

(Mfr # CDM12SM • B&H # DSCDM12SM) **1899.95**

ChromaDuMonde 12+ 4 Super Maxi:

Same as above, plus 4 skin-tone patches.

(Mfr # CDM12+4SM • B&H # DSCDM124SM) **2084.95**

ChromaDuMonde 12-R Super Maxi:

Includes 6 vector colors and 6 intermediate between-vector colors. It offers 11-step crossed grayscale and 100 IRE white and true-black chips. It also offers hyperbolic resolution trumpets.

(Mfr # CDM12RSM • B&H # DSCDM12RSM) **2089.95**

ChromaDuMonde 12+ 4R Super Maxi:

Same as above, plus 4 skin-tone patches.

(Mfr # CDM12+4RSM • B&H # DSCDM124RSM) **2299.95**

ChromaDuMonde 24 Super Maxi:

Includes 6 vector colors and 18 evenly spaced intermediate colors. It also features 11-step crossed grayscale and 100 IRE white and true-black chips.

(Mfr # CDM24SM • B&H # DSCDM24SM) **2214.95**

ChromaDuMonde 24 -R Super Maxi:

Same as above, plus it offers hyperbolic resolution trumpets.

(Mfr # CDM24RSM • B&H # DSCDM24RSM) **2329.95**

ChromaDuMonde 28 Super Maxi:

Includes 6 vector colors and 18 evenly spaced intermediate colors. It also features 11-step crossed grayscale and 100 IRE white and true-black chips. Additionally, it offers 4 skin-tone patches.

(Mfr # CDM28SM • B&H # DSCDM28SM) **2274.95**

ChromaDuMonde 28 -R Super Maxi:

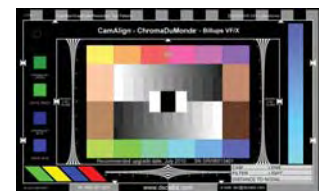
Same as above, plus it offers hyperbolic resolution trumpets.

(Mfr # CDM28RSM • B&H # DSCDM28RSM) **2569.95**

Billups VF/X Chart

This unit features ChromaDuMonde color and grayscale references charts, as well as other task specific charts. Grayscale and sky-blue ramps are included to identify banding introduced in image processing. A digital green and blue chart is featured for special effect chips. Composite components and Rosco's chroma key green and blue high chroma slashes offer a useful reference for checking and tracking chroma aliasing through post data information panels. This tracking reference includes nodal to chart distance with inch and centimeter scales, allowing you to calculate the camera viewing angle.

Black reflectance spheres show the number, position, and type of lighting (spot or flood), as well as hue or color filtration of individual lights. A white sphere also shows integrated level and color temperature. A black background provides cleaner histograms.



BIRNS & SAWYER

Director's Viewfinders



Micro Viewfinder (Mfr # 162128 • B&H # BIMVFQ)
The Micro Viewfinder covers focal lengths from 8mm to 80mm for 2/3" chip standard and high definition digital cameras, 16mm focal lengths 8.5mm to 94mm, and 35mm focal lengths 18mm to 200mm. Aspect ratios are 1.33 (TV), 1.66, 1.78 (HDTV), 1.85, and 2.35. Comes with a nylon neck cord**259.95**

Universal Mini Viewfinder (Mfr # 162129 • B&H # BIMVF): This viewfinder has digital scales for Canon, Sony, and other 1/3" chip cameras. It also covers the standard 16 and 35mm film formats as well as 1/2" DV and 2/3" HD cameras. Focal lengths are 4mm to 35mm for 1/3" CCD cameras like the Canon XL1s, Sony PD-170 and Panasonic DVX-100.....**389.95**

Professional Production Slates

Birns and Sawyer offers professional scene-marking production slates with inlaid color or greyscale clapping sticks. The slates measure 7 1/2 x 11" (HxW). They have durable engraved sections/text, work with dry-erase markers and fits into a standard front-box.

Color (Mfr # 425011 • B&H # BISACC)**89.95**
Greyscale (Mfr # 425003 • B&H # BISAGC)**89.95**

HOODMAN

Camcorder Hoods

Hoodman's Camcorder Hoods are available to fit camcorders with a 2" to 4" LCD monitor. The hood will provide glare free viewing when attached. It is constructed from plastic inserts wrapped in water resistant nylon and attaches with elastic straps. Elastic straps are used to mount hoods to cameras. Hood folds for quick and easy storage.

For 2" Screens (Mfr # H200 • B&H # HOH200)**10.95**
For 3" Screens (Mfr # H300 • B&H # HOH300)**19.95**
For 3.5"-4" (Mfr # H400 • B&H # HOH400)**19.95**

VORTEX MEDIA

WarmCards White Balance Reference System

Why should you settle for an ordinary white balance when it's easy to get the warmer and richer images that clients and audiences prefer? For professional cameramen, videographers, and digital photographers a "true" white balance is rarely acceptable any more. This system is a sophisticated set of white balance cards that make it easy to get a warmer white balance, and keep the "warm balance" consistent throughout the shoot — with exact precision. They are the fastest, easiest, and most consistent way of manipulating your camera's white balance to improve skin tones and eliminate the cold electronic look that CCDs provide.

- ◆ Work with all professional TV/video cameras and all lenses. With several different grades of warming to select from, you can get exacting control over your camera's color balance.
- ◆ WarmCards are used regularly on just about every network news magazine, nightly news program, and all the major cable channels.
- ◆ Saves video editors time color correcting and enhancing footage in post

WarmCards Camera Pack: Includes 6 cards in a pouch. (Mfr # DCP • B&H # VOWCDC)**39.95**

WarmCards White Balance Reference System: Includes three 3x4" and three 6x10" cards with marker, lanyard and case. (Mfr # WC • B&H # VOWC)**59.95**



EasySLATE

Successful professionals know that slating is an essential production element for scene identification, production notes, or matching shots to a script in post-production. Making it a habit to slate and log your shots while shooting will save you hours in the edit suite. EasySLATE system is the fastest, easiest, and most convenient way to incorporate slating into your production workflow. It comes complete with three slates designed to meet all of your shooting needs and includes a handy back focus chart. (Mfr # ESLATE • B&H # VOES)**49.95**

NOGA HoldIt Articulating Arms

Noga HoldIt Arms are perfect for mounting on-board video monitors to film and video cameras. The heart of the arms is their single locking knob that tightens the friction on both ball ends, the swiveling collars that the ball-ends are in, and the central pivot point.

DG1105: Main arm terminates in a 1/4-20 thread and is 5" long. The other arm terminates in a 1/4-20 thread and is 4.5" long. Weighs 8 oz. (Mfr # DG1105 • B&H # NODG1105)**109.95**

DG11043: The main arm terminates in a 3/8-16 thread and is 4.25" long. The other arm terminates in a 1/4-20 thread and is 4" long. Weighing only 8 oz., Lindcraft CNC milled and fluted barrel connector allows you the freedom to mount or remove it without tools, saving valuable production time. (Mfr # DG11043 • B&H # NODG11043)**119.95**

MG11043: For mounting accessories on video cameras or anywhere a 3/8-16 screw receptacle exists. The accessory side of this locking arm also has a 1/4-20 mated to a ball-joint for complete freedom of placement. As with all HoldIt variable arms, a single central knob locks all the articulation in place solidly. With an overall length of 9.7", it supports gear up to about 17.5 lbs. Ideal for holding large on-board monitors. (Mfr # MG11043 • B&H # NOMG11043)**139.95**



DN-300

Native DV and HDV Portable Hard Disk Recorder

The DN-300 makes capturing a thing of the past by allowing confident native DV & HDV recording while monitoring on a standard video monitor. The DN-300 takes advantage of tapeless acquisition in even the roughest conditions, while allowing users to reduce costs with continuous recording of up to 18 hours without tape.

After recording simply connect the DN-300 to a computer based editing system via Firewire and start editing immediately – no time wasted on capture – simply drag-and-drop files direct to the timeline, or take advantage of Firewire's 16x realtime transfer speed, and move your recording to your PC or Mac-based editing system. The recorder supports most non-linear editors, including Apple Final Cut Pro, Adobe Premiere Pro and Avid.



- ◆ Massive 250GB capacity offers up to 18 hours recording; Native file format includes .avi and M2T.
 - ◆ Recordings can be played back from the DN-300 to a video monitor or on camcorder's viewfinder. For easy navigation and playback the DN-300 allow users to record in to up to 99 tracks.
 - ◆ Supports DV Time Code and includes a RS-422 and GPI control interfaces.
 - ◆ Allows connection to DV as well as analog equipment including; DV25, component, composite and S-Video, each input with a convenient loop through for easy integration with existing equipment.
 - ◆ Features also include seamless repeat loop playback ideal for presentation (e.g. tradeshow or in-shop promotion with instant access to files, and time shift, where you can record and playback at the same time.
 - ◆ Powered by 12v DC, perfect for field use or with Datavideo's Mobile Video Studio.
- DN-300:** DV/HDV Recorder/Player (Mfr # DN-300 • B&H # DADN300) **1374.95**



nNovia Quick-Capture A2D2 Hard Disk Recorder Base System

The nNovia Quick-Capture A2D2 Hard Disk Recorder is a professional, portable device for digital recording either DV or HDV format, recording "edit-ready" clips for use with a variety of non-linear editing (NLE) systems. The A2D2 eliminates the need for the intermediary capture process while also allowing playback immediately through an analog monitor, making it convenient to check footage in the field.

This cost-efficient solution has an integrated 120GB hard disk drive that allows you to record up to 9 hours, making it ideal both event coverage and sporting events. Whether you are shooting standard or high definition, the A2D2 makes sure you never miss the action.

- ◆ The A2D2 features complete .M2T file compatibility, the file format used for the increasingly popular HDV format. This provides high definition videographers to reap the benefits previously only afforded to those shooting standard definition video. Bravo!
- ◆ Video footage is stored as Apple MOV, AVI, MXF, or M2T formats. The footage is edit-ready and render-free, ready for your NLE system! It's 100% compatible with most major Apple and PC NLE systems including Avid, Canopus, Matrox, Premiere and Final Cut Pro.
- ◆ Mark clips on the fly during shooting for quick clip retrieval. A searchable clip index allows faster location of footage for edits. Access to up to 99 numbered bins, storing up to 97 video clips per bin. Supports drop-frame timecode for easy access to marked tape locations.
- ◆ The compact and lightweight unit has a tough and durable housing that will protect the A2D2 while in use.

Quick-Capture A2D2 Hard Disk Recorder Base System (Mfr # QC-DECKA2D • B&H # NNQCDECKA2D) **1499.00**

FS-4 HD • FS-4Pro HD

Portable DTE Recorders

Weighing less than a pound and only 1.5" thick, the Focus FS-4 HD and FS-4Pro HD bring Direct To Edit (DTE) technology to your DV or HDV handheld camcorder. Featuring a comprehensive backlit display, an easy-to-use menu system, a hard drive, and a removable, rechargeable battery, the FS-4 is the perfect DTE companion for DV and HDV handheld shoots. Designed for use in even the roughest conditions, they include 6- and 10-second electronic shock cache to ensure that you never lose footage. Audio, video, timecode, and control information is passed through a single FireWire cable, allowing you to record to disk and tape simultaneously. And when recording is complete, your footage is ready to edit instantly—no capturing, file transfer, or file conversion is required—they are compatible with a wide range of nonlinear editing systems. Whether mounted directly to a camcorder or clipped to a belt, the FS-4 is designed to excel in the field.



FEATURES

- ◆ With a removable, rechargeable battery and advanced features such as time lapse, retro disk recording, and scene marking, they are the perfect companion for handheld shoots.
- ◆ They interface with your camcorder using a single FireWire cable that passes audio, video, timecode, and control information, allowing you to simultaneously record to disk and tape in HDV or DV mode. They also provide a comprehensive backlit display, menu system, and buttons to give you easy control and management.
- ◆ The FS-4Pro HD comes in a 60GB hard drive for 4.5 hours of HDV 1080i (6 hours of 720p) recording time; with 80GB for 6 hours of HDV 1080i (8 hours of 720p); and 100GB for 7.5 hours HDV 1080i (10 hours of 720p).
- ◆ No matter which nonlinear editing (NLE) system you have, the FS-4 HD and FS-4 Pro HD have you covered. When in DV mode, files are recorded to disk as RawDV, AVI Type 1, AVI Type 2, AVI Type 2 24p, Matrox AVI, Canopus AVI, QuickTime, QuickTime 24p. The FS-4 Pro HD is also compatible with Avid OMF, Pinnacle AVI or MXF.
- ◆ When working with DV clips, simply connect the FS-4 to a Mac or PC editing system in the same way you would connect a FireWire hard disk drive and you are instantly ready to edit. No capturing, no file transfer, no file conversion. Just shoot and edit. When working in HD mode, you're able to work with a growing list of compatible NLE systems.

FS-4 Pro HD Only

- ◆ In HD mode, 720p clips are recorded as M2T (720p 24, 25, 30, 50 or 60) files or QuickTime HDV (720p 30).
- ◆ Record 1080i-50/60 and 720p/30 clips in the native QuickTime HDV file format. The FS-4Pro HD extracts and decodes the audio from the incoming HDV stream, combines it with the video stream, and wraps it as a QuickTime HDV file. The file can then be imported directly into Final Cut Pro—no capture or conversion is required.
- ◆ Select a particular reel for clip placement, and all subsequent clips recorded will automatically be placed in the same reel until you select a different reel or set the function off.
- ◆ Recording time can also be extended by linking multiple units together, and a 10-second electronic shock cache ensures you never lose footage, even in the roughest of conditions. Clips are placed in prenamed folders while you shoot.

Model	FS-4 HD	FS-4Pro HD
Inputs/Outputs	DV25 or HDV video I/O (1 x 6-pin IEEE-1394) FireWire computer I/F—up to 400 Mbps (1 x 6-pin IEEE-1394) GPI and RS-232C control (1 x 3.5mm minijack)	
Audio	DV embedded 2-channel (16-bit, 48 kHz) or 4-channel (12-bit, 32 kHz) (RawDV only); HDV embedded MPEG-1 Audio Layer II	
Video (DV)	25 Mbps; 8-bit 4:1:1 (NTSC-DV) or 4:2:0 (PAL-DV) (model dependent)	
Video (HDV)	MPEG-2 (MP@H-14) 720p (8-bit, 19.7 Mbps) or 1080i (8-bit, 25 Mbps)	
Timecode	DV embedded timecode (drop or nondrop)	
Disk	40GB	60GB, 80GB, or 100GB
Disk Speed	5400 RPM; 8MB cache	
Disk Format	FAT32	
OS Compatibility	Windows 98SE, ME, 2000, XP; Mac OS 9, Mac OS X	
Battery	Custom removable Li-ion rechargeable battery	
Battery Capacity (included with model)	Standard-capacity battery (90 minutes)	60GB: Std-capacity battery (90 min.) 80GB and 100GB configuration: High-capacity battery (180 min.)
Dimensions (HWD)	1.59" x 5.6" x 3.74" (40mm x 142mm x 95mm)	
Warranty	1 year	2 years

FOCUS ENHANCEMENTS

FS-4 HD • FS-4Pro HD

FS-4Pro HD 100GB: Includes belt clip, 4' FireWire cable, Power supply with cable and connector and removable Li-Ion battery pack (Mfr # ASYF-1170-01LF • B&H # FOF54PHD100).....**1549.95**

FS-4Pro HD 80GB
(Mfr # ASYF-1166-01LF • B&H # FOF54PHD80Q).....**1349.95**

FS-4Pro HD 60GB
(Mfr # ASYF-1162-01LF • B&H # FOF54PHD60).....**999.95**

FS-4Pro HD 40GB
(Mfr # ASYF-1158-01LF • B&H # FOF54HD40Q).....**649.95**

2-Hour Battery for FS-4
(Mfr # ASYF-1039-01 • B&H # FOBFS490).....**124.95**

3-Hour Battery for FS-4
(Mfr # ASYF-10409-01 • B&H # FOBFS4).....**189.95**

External FS-4 Battery Charger
(Mfr # ASYF-0940-01LF • B&H # FOBFS4).....**169.95**

Cradle for FS-4: Fits with both 2- and 3-hour batteries. (Mfr # ASYF-1043-01 • B&H # FOCFS4).....**39.95**

Wired Remote Control:
Features standard playback and recording control as well as a numeric keypad. (Mfr # ACSS001901D • B&H # FORCFS2).....**49.95**

Switronix NP-L168FS

An NP battery handle mount with a swivel ball and a hard drive holder to mount a FireStore unit to a camera handle. You can continuously power an FS unit for up to 5 hours when using the NP-L60 NP battery. The swivel ball head rotates 360° to position the FS unit. The hard drive holder is fabricated from an aluminum alloy, lined with felt, to securely hold the unit while eliminating surface scratching. Requires a power-tap cable for use.

NPL-168FS: NP Battery and FireStore Holder (Mfr # NP-L168FS • B&H # SWNPL168FS).....**189.95**

12" Power-Tap Cable (SWPTFS12).....**29.95**

24" Power-Tap Cable (SWPTFS24).....**29.95**

B.E.C. BECFS4

The BECFS4 is a mounting box specifically designed to hold the FS-4 series of DTE recorders. This provides convenient mounting for a variety of applications, such as field recording. The box mounts on all cameras with the Sony screw configuration that is most commonly found on the NP/1 battery holder, the IDX NP/1 battery system and Anton Bauer Gold Mount system.

(Mfr # BECFS4 • B&H # BEFS4).....**74.95**

MODEL	FS-4 HD 40GB	FS-4Pro HD 60GB	FS-4Pro HD 80GB	FS-4Pro HD 100GB
Recording Time				
DV	3 hours	4.5 hours	6 hours	7.5 hours
HDV 1080i	3 hours	4.5 hours	6 hours	7.5 hours
HDV 720p	4 hours	6 hours	8 hours	10 hours
HDV Recording Mode				
.m2t 1080i 50/60	■	■	■	■
.m2t 720p 24/25/30/50/60				
QuickTime 1080i 50/60		■	■	■
QuickTime 720p 30		■	■	■
DV Recording Mode				
AVI Type 1	■	■	■	■
AVI Type 2	■	■	■	■
AVI Type 2 24p	■	■	■	■
Avid OMF		■	■	■
Canopus AVI		■	■	■
Matrox AVI	■	■	■	■
MXF		■	■	■
Pinnacle AVI		■	■	■
QuickTime	■	■	■	■
QuickTime 24p	■	■	■	■
RawDV	■	■	■	■

Bebob

Box-FS Holder for FireStore FS-4 Series



Manufactured from aluminum/synthetic material and therefore very lightweight, the Box-FS is an ideal solution to attach the FireStore below the camera. The camera, together with the FireStore holder can still be used handheld or fastened to the tripod. Should you want to work without a tripod, the Box-FS serves as an additional brace surface and provides protection for the

camera. The FireStore fits in the drawer both with the small and with the large battery. Even though the fan slots are vacant, sound recordings are in no way interfered, because the FireStore holder is under the camera.

- ◆ The Box-FS mounts underneath your camera allowing you to keep your FireStore protected when shooting. You'll still be able to use the camera on a tripod with a pin and 1/4" screw.
- ◆ The cage features a sliding drawer for easy access to the FireStore. It features a locking mechanism to ensure that the DTE remains in place during recording.
- ◆ The Box-FS is designed to work with any camcorder. It connects via a standard tripod mount.

Box-FS: Holder for FireStore FS-4 and FS-100 (Mfr # BEBOXFS • B&H # BEFSHDVC).....**379.95**

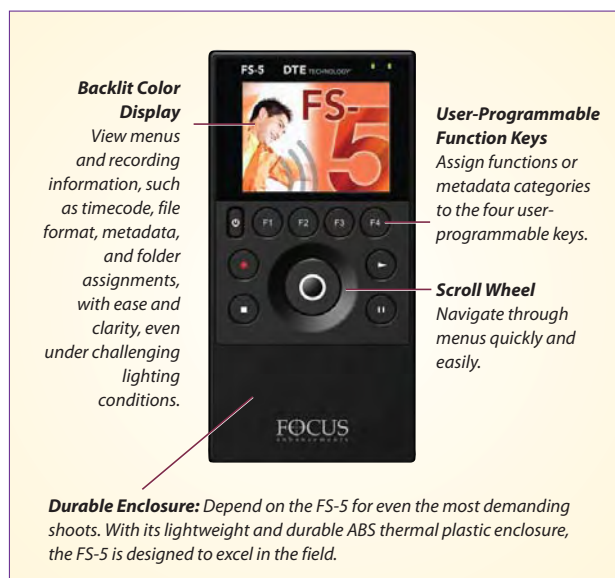
FS-5

Portable DTE Recorder

Defining a new class of DTE recording, the FS-5 Portable DTE Recorder weighs only eight ounces, brings Direct To Edit recording technology to your HDV or DV handheld camcorder, and enables you to add custom metadata while you're recording. Featuring a backlit color display, an easy-to-use menu system, a 100GB hard drive, and a removable, rechargeable battery, the Focus FS-5 is the perfect DTE companion for your HDV or DV camcorder. Audio, video, timecode, and control information is passed through a single FireWire cable, allowing you to record to disk or to disk and tape simultaneously.

Designed for use in even the roughest conditions, the FS-5 includes a 10-second electronic shock cache to ensure that you never lose footage. Advanced features such as time lapse (DV mode only), retro disk recording, scene marking, and clip categorization make the FS-5 Portable DTE Recorder the perfect companion for handheld shoots. When recording is complete, your footage is ready to edit instantly—no capturing, file transfer, or file conversion is required.

With the FS-5, you can personalize and optimize workflow—while you shoot. With your wireless handheld device or laptop, you can access the FS-5 through a browser, define metadata, and assign it to video while you're recording, eliminating the need to tag footage when the shoot is over. During postproduction, simply transfer clips—complete with metadata—from the FS-5 to your NLE system or PX Media Server. All of the information that you assigned during the shoot goes with the clips, saving you hours or even days of logging time.



FEATURES

DTE Advantage

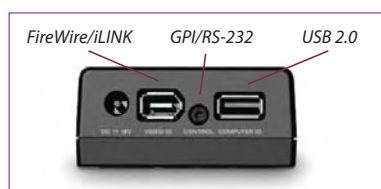
With the FS-5 DTE portable recorder, you'll go from acquisition to editing with unparalleled speed, efficiency, and reliability. By combining DTE Technology with advanced caching, the FS-5 ensures you never miss an important shot or lose critical footage. And best of all, your footage is ready to edit instantly.

High Capacity Hard Drive

Rugged, shock resistant, and extremely power efficient, the FS-5 features a 100GB hard disk. Using the Universal Disk Format (UDF) to write files, the FS-5 saves long recordings (up to 1.5 hours) as a single clip (instead of a series of individual clips), making it much faster and easier to manage clips in postproduction.

Hard Drive	100GB
DV	7.5 hours
HDV 1080i	7.5 hours
HDV 720p	10 hours

- ◆ Record a wide range of HDV and DV formats.
- ◆ Navigate quickly and easily using the intuitive menu structure.
- ◆ Record up to 10 hours of HDV video at a time. You can also record up to 1.5 hours of HDV or DV video as a single clip; a new clip is automatically created when the end of the current clip is reached.
- ◆ Up to 3 hours of recording time from the standard-capacity battery.
- ◆ Connect to a wired or wireless network via the USB 2.0 port and transfer clips from the FS-5 to your NLE system or PX Media Server.
- ◆ Assign metadata to footage while recording using the FS-5 browser-based interface and a wireless handheld device or laptop.
- ◆ Enjoy the quiet operation of the FS-5, made possible by its energy-efficient hard drive that does not require a fan.
- ◆ Only 2.75 x 5.4 x 1.25" (WHD), the FS-5 packs a wealth of functionality into a sleek and durable package that weighs only 8 oz. Crafted from the inside out to meet the reliability and quality standards that video professionals demand, the FS-5 is designed to deliver great results under even the most challenging shooting conditions.



With its FireWire/iLINK, GPI/RS-232, and USB 2.0 ports, the FS-5 easily connects to your camera, a remote control unit, or your wired network. For wireless connectivity, simply plug the optional 802.11 dongle into the USB 2.0 port and use your wireless PDA or laptop to send custom metadata to the FS-5 while your footage is recording.

FOCUS ENHANCEMENTS

FS-5

Recording Modes

HDV Recording Modes:

.m2t 720p 24/25/30/50/60

.m2t 1080i 50/60

MXF HDV (720p 30)

MXF HDV (1080i 50/60)

QuickTime 1080i 50/60

QuickTime 720p 30

DV Recording Modes:

AVI Type 1 Matrox AVI

AVI Type 2 Pinnacle AVI

AVI Type 2 24p Canopus AVI

QuickTime MXF

QuickTime 24p RawDV

Native MXF HDV Support

With the FS-5, you can record native MXF HDV 720p 30 and 1080i 50/60 clips and import them into Avid Xpress Pro, Avid Media Composer, or Avid NewsCutter for editing.

Native QuickTime HDV Support

Record 1080i 50/60 or 720p 30 clips as native QuickTime HDV. The FS-5 extracts and decodes the audio from the incoming HDV stream, combines it with the video stream, and wraps it as a QuickTime HDV file. When recording is complete, your QuickTime HDV file can be imported directly into Final Cut Pro—no capture or conversion is required.

NLE System Compatibility

Because the FS-5 is capable of recording video in a wide range of formats, it's compatible with a large number of nonlinear editing systems.

Control Modes:

External AV/C
Local GPI/External Remote

Timecode Modes:

External (Camera) Record Run
Free Run Regen

Special Recording Modes:

Retro-Cache Snap
Retro-Disk Time Lapse

Transform Workflow at the Recording Stage

Not only does the FS-5 enable you to go straight from shooting to editing by recording video in the NLE-compatible file format of your choice, but it allows you to add custom metadata to footage while you're recording. With three simple steps, you can define metadata fields for your shoot, add metadata tags to footage while its recording, and transfer edit-ready clips to your NLE system or PX Media Server, complete with camera-generated and custom-defined metadata. This simple three-step process dramatically streamlines workflow and saves numerous hours typically spent reviewing, logging, and tagging footage after it's shot.

Create Meta Data Template: With your wired or wireless laptop or handheld device, access the FS-5 through its browser-based interface, define metadata categories and fields, and save them as a template on the FS-5.

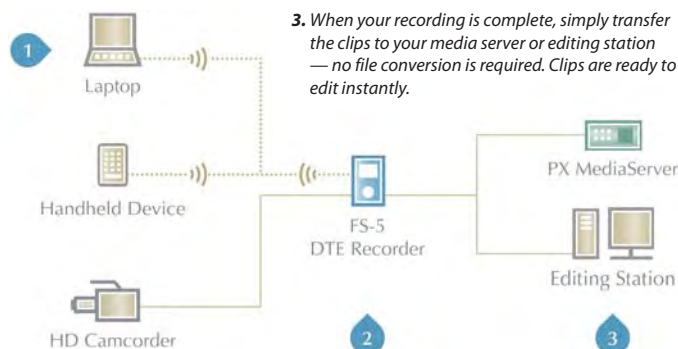
Tag Media on the Fly: When you're ready to shoot, access the metadata template on the FS-5 from the browser on your laptop or handheld device and assign metadata as you record. Use the metadata fields in your template or create new metadata tags on the fly.

Transfer and Organize: After the shoot, transfer clips from the FS-5 to your NLE system or to the PX Media Server. Custom metadata is transferred with your footage, making it simple to search for and organize clips.

FS-5 SPECIFICATIONS

Display	2.5" (diagonal) color TFT LCD display; 320- by 240-pixel resolution
Input/Outputs	DV I/O: 25 Mbps; HDV I/O: MPEG-2 transport stream (19.8 or 25 Mbps) Computer I/F: USB 2.0 (up to 480 Mbps) (1x USB-A female); Video I/O: 1x 6-pin IEEE-1394 (FireWire/i.LINK); GPI and RS-232C control (1x 3.5mm minijack)
Audio	DV INPUT: Embedded 2-channel (48 kHz, 16-bit) or 4-channel (32 kHz, 12-bit) HDV Input: Embedded MPEG-1 Audio Layer II
Video (DV)	25 Mbps; 8-bit 4:1:1 (NTSC-DV) or 4:2:0 (PAL-DV) (model dependent)
Video (HDV)	MPEG-2 (MP@H-14) 720p (8-bit, 19.7 Mbps) or 1080i (8-bit, 25 Mbps)
Timecode	DV embedded timecode (drop or nondrop)
DTE Formats (SD)	AVI Type 1 & 2, AVI Type 2 24p, Canopus AVI, Matrox AVI, MXF, QuickTime, QuickTime 24p, RawDV
DTE Formats (HD)	.m2t HDV (720p 24/25/30/50/60, 1080i 50/60), MXF HDV (720p 30, 1080i 50/60), QuickTime HDV (720p 30, 1080i 50/60)
Disk	1.8" 100GB, 4200 RPM; 8MB cache, UDF (Universal Disk Format)
Networking	USB 802.11 dongle (optional) or USB Ethernet adapter (optional)
OS Compatibility	Windows XP, Vista; Mac OS X
Power	Adapter 11-18v DC; Custom removable Li-ion battery (180 min capacity)
Dimensions / Weight	2.75" x 5.4" x 1.25" (WHD) / 8 oz.

1. With a wireless laptop or handheld device, you can access the FS-5 through a browser, define metadata, and assign it to video while you're recording.
2. Record video, complete with camera-generated metadata and user-defined metadata received through a wireless connection (optional 802.11 dongle required).



TITAN

Microwave Wireless Transmitter & Receiver System

A multi-directional microwave wireless transmitter and receiver system, the Titan can broadcast through obstacles without desynchronization of the video picture. Titan transmits/receives NTSC, PAL and SECAM color signals as well B&W signals through residential walls, floors, ceilings or crowds without picture interruption. Line of sight, the range is 1000'. The Titan system features selection of four pre-dialed channels that are accessible with a flip of a switch. It operates on 9-36v DC via Lemo 2 or Hirose 6 connectors. The Hirose 6 connector carries video out (receiver) or video in (transmitter) and accepts DC in.

Compact and lightweight (transmitter and receiver weigh only 7 oz. each), they can be easily velcroed to any camera or monitor, and used in conjunction with any monitor. Titan is also ideal for body-rig operators as the signal remains stable even both the transmitter and the receiver are in motion.



- Titan Wireless Transmitter Set** (Mfr # 95TITANSET • B&H # TRTTS).....**2749.95**
- Titan Wireless Video Duo Set 1:** Two Receivers, One Transmitter (Mfr # 95TITANDUO • B&H # TRTDS).....**4019.95**
- Titan Wireless Video Transmitter Only:** One Antenna, Microwave, Hirose and Lemo Connectors (Mfr # 95TITANTX • B&H # TRTT)**1724.95**
- Titan Wireless Video Receiver Only:** Two Antennas, Microwave, Hirose and Lemo Connectors (Mfr # 95TITANTX • B&H # TRTR).....**1224.95**
- Support Bracket for C-Stand** (Mfr # 97SUPTITCSTD • B&H # TRTSBCS).....**49.95** **Support Bracket for Camera Handle** (Mfr # 97SUPTIT • B&H # TRTSBCH).....**49.95**



IDX

CAM~WAVE HD HD Wireless Transmitter and Receiver

CAM~WAVE HD is a mobile transmission system that eliminates the need for cables in many remote situations, even when shooting in high definition. It produces wireless full-bandwidth uncompressed HD-SDI and SD-SDI pictures, live and in real time, with virtually no latency: less than 1 millisecond delay. Crystal-clear, artifact-free images are delivered wirelessly up to 150' in line-of-sight shooting, or 100' through walls. Transmissions from a film or video camera to a receiving station—a news truck or producer's monitor, for example—are sent via encrypted MIMO/OFDM. Sleek and lightweight, CAM~WAVE HD weighs under 2 lbs. and has no visible antennas.

- ◆ Uncompressed wireless system for both HD-SDI and SD-SDI video.
- ◆ Wireless transmission via MIMO/OFDM (Orthogonal Frequency Division Multiplexing), operating between the 5.1-5.8 GHz frequencies. No special license is required.
- ◆ Conservative 11w power consumption.
- ◆ Multiple formats of video with two channels of embedded audio.
- ◆ Transmission of up to 100' through walls and up to 150' in line-of-sight conditions.



- ◆ Conformance to major international engineering standards including FCC, CE and RoHS specifications
- ◆ Ships with an IDX V-mount, allowing a direct attachment to an IDX battery for rear mounting on a camera. Can also be powered by DC.
- ◆ Selection of four manual or auto-select frequencies with 256-bit encryption.

CAM~WAVE HD (B&H # IDCW5HD)
Includes the CW-5HD TX transmitter and the CW-5HD RX receiver**5499.95**

EWA MARINE

UNDERWATER HOUSINGS

Flexible Waterproof Housings

Want to take your camcorder underwater to film beautiful coral fish or make an exciting film of your rafting trip? The problems associated with such adventures are readily appreciated but quickly overcome with an Ewa-Marine video housing. Each housing is individually tested for use to a depth of 33' remarkably light and still robust, they provide effective protection against sand, dust, rain, seawater, mud, humidity as well as all other adverse conditions. Camcorder buttons are controlled through the flexible skin from the outside. Autofocus works above water. Underwater, the manual focus setting allows sharp pictures within the operating range.



FEATURES

- ◆ Unlike hard housings which are sealed with sensitive O-rings, require careful maintenance and can leak without warning, EWA Marine housings require no such rings and their waterproofness is virtually independent of depth.
- ◆ The housings are ultra-sonic welded, UV resistant and feature their own carry strap.
- ◆ All underwater housings are sealed via a triple stainless steel, non-corrosive screw closing rail.
- ◆ EWA Marine flexible housing are extremely easy to maintain. There are no "O"-rings to maintain as found in hard housing that may contain as many as 12-18 rings (a hard housing is only as good as its "O"-ring seals). These rings must be constantly inspected, greased, and many times - replaced.
- ◆ EWA Marine housings only require a quick rinse in fresh water, towel dry, keep them away from sharp objects, and do not allow them to bake in the sun.
- ◆ They have a pair of non-corrosive and seawater resistant clamping rails which fit together for perfect sealing. They tighten by means of knurled thumb screw knobs.
- ◆ Straps at the bottom allow weights to be attached for perfect buoyancy under water.
- ◆ Perfect for snorkeling or shallow diving, sandy, dusty, humid or foul weather conditions these housings will give your camera the best possible protection while being fully operable.

Going Deeper

Although they have a practical operating depth of 30', these flexible housings can be successfully taken much lower with no damage to the housing. The depth limitation is due to the design of the actual camcorder. For example, water pressure exerted on a flexible housing causes the housing to compress. This compression effects various protruding camera controls such as a shutter button, on/off switch, or zoom button. Those designed with greater protruding controls will be even more adversely effected with "sticking" control buttons in less depths of water. Depth operation is dependent upon the construction of the camera and not the housing.

- ◆ Many of the EWA Marine flexible housings weigh less than 2 lbs as compared to housings weighing in at 10-20 lbs. They also serve as durable protection above water in rain and snow conditions. Housings fold for easy storage in a camera bag.
- ◆ EWA Marine housings are manufactured from double laminated PVC and have an optical glass port. They are rated to 33' underwater. They are supplied in a handy yellow carry-case which has a water-proof interior and zippered side-pocket.

For Canon GL-2 (Mfr # VXM2 • B&H # EWVXM2)	434.95
For Canon XL-2 (Mfr # VXL2 • B&H # EWWXL2)	949.95
For Canon XH-A1 and XH-G1 (Mfr # VXA • B&H # EWVXA)	499.50
For JVC GY-DV500 (Mfr # TV170 • B&H # EWTV170)	1995.00
For Panasonic AG-DVC30 (Mfr # VHH • B&H # EWWHH)	494.95
For Panasonic AG-DVX-100B (Mfr # V1000 • B&H # EWW1000)	449.95
For Panasonic AG-HVX200 (Mfr # VP2 • B&H # EWWP2)	5599.5
For Sony DCR-VX2100, DSR-PD170 (Mfr # V2000 • B&H # EWW2000)	479.95
For Sony HDR-FX7 and HVR-V1 (Mfr # VF7 • B&H # EWWF7)	524.95
For Sony HDR-FX1 (Mfr # VFX • B&H # EWWFX)	499.95
For Sony PMW-EX1 (Mfr # VEX-1 • B&H # EWWEX1)	874.95
For Sony DSR-250 (Mfr # TV170 • B&H # EWTV170)	1995.00

AMPHIBICO

EVO HD



Dive Buddy Elite for Sony HDR-V1

Compact and ergonomic, the Dive Buddy EVO HD Elite is an electronic underwater housing for the Sony HVR-A1U HDV camcorder. Built with marine grade aluminum construction, marine grade brass and stainless steel hardware, it operates at depths up to 330'. It features easy electronic push button controls on a newly designed marine grip to access all key camcorder functions to create outstanding HD imaging. It also includes a large 3.5" color LCD viewfinder on the rear of the housing angled at 10° for enhanced viewing at arms length. Makes framing, focus and other settings easy to see.

- ◆ Record/Standby
- ◆ Variable Speed Telephoto
- ◆ Variable Zoom Speed
- ◆ Photo (onto Memory Stick)
- ◆ Includes rear mounted, large 3.5" color LCD viewfinder angled at 10° for easy viewing at arms length. Powered by AA batteries.
- ◆ White Balance Button
- ◆ Toggle between manual to Auto Focus Lock
- ◆ Mode Change (Camera/Photo/Playback)
- ◆ Fully anodized with a hard coat of polyurethane paint
- ◆ Bayonet mounted 0.55x, 70° coverage hard coated amphibious conversion lens system.
- ◆ Tally light flashes green while recording
- ◆ Electronic moisture sensor flashes red if there is any water leaking into the housing.
- ◆ Internal flip filter with a 52mm UR Pro Blue Water filter installed.
- ◆ External hydrophone picks up high frequency sounds, such as whales and dolphins.

Dive Buddy EVO HD Elite for HVR-A1U:

Includes Camera Saddle, Internal flip filter with a 52mm UR Pro Blue Water, O-ring kit (Mfr # VHA1EL01 • B&H # AMDBSHVRA1U)**2,269.95**

PHENOM Digital Marine Housing for Sony HDR-FX1 and HVR-Z1

The Phenom is an electronic and mechanical combined housing which gives a complete control of your camcorder while filming your underwater scenes. All important features such as White Balance, Gain, Shutter Speed, Iris and manual focus can be accessed from the housing. Other features include a moisture sensor alarm, flashing green tally light when recording and a internal filter ring. Available with standard Dome/Flat port lens with full zoom-through capability or 0.68x, 94° Wide Angle lens with full zoom-through capability—with or without a 3.5" LCD monitor.



- ◆ 14 electronic push button controls on both the left and right hand grip provide access to over 25 functions. Along with 3 mechanical push button controls, you have access to every important camera function.
- ◆ Electronic moisture sensor flashes red if there is any water leaking into the housing.
- ◆ 2.5x magnified viewfinder with adjustable dioptic control
- ◆ Tally light flashes green while recording
- ◆ 3 Auxiliary ports
- ◆ 2x flip filters capability
- ◆ Proportional Manual Focus, Manual Zoom
- ◆ Manual Iris, Gain and Shutter Speeds
- ◆ VCR Mode (Play, REW, FF, Stop, Pause)
- ◆ Index Markers, Menu Control Panel
- ◆ Sensitive Dual Hydrophones

Left Hand Grip Controls

- ◆ Proportional manual focus wheel
- ◆ Video Lights on/off - for left and right light arms
- ◆ Review, Screen Display ◆ Index Markers

Right Hand Grip Controls

- ◆ Record/Standby ◆ Wide Angle/Telephoto
- ◆ Proportional variable zoom
- ◆ White Balance ◆ VCR functions
- ◆ Manual/Momentary Auto Focus

Phenom FXZ1 Electronic Underwater Housing for Sony HDR-FX1 and HVR-Z1U HD Camcorders (Mfr # VHFZX105 • B&H # AMVSHDRFX1)**6,749.95**

AMPHIBICO

ENDEAVOR CLASS



Digital Marine Housings for Sony HDR-V1

Designed for the Sony HDR-V1 (as well as the HDR-FX7 consumer version) 3-CMOS HDV camcorder, the Endeavor Class housings feature access to full camcorder controls, outstanding optics and superior balance, allowing you to record underwater broadcast HD quality imaging. Built with marine grade aluminum and marine grade brass with stainless steel hardware that allows use of the camcorder to depths up to 330'.

The Endeavor Class allows accessing from the housing important features such as White Balance, Gain, Shutter Speed, Iris and manual focus. Available with 3.5" Standard Definition or 4.3" High Definition 16:9 LCD rear viewfinder

with either wide angle lens adapter with full-zoom through capability, a bayonet-mounted dome port that corrects for underwater size distortion, or a standard flat port lens with full-zoom through capability.

FEATURES

- ◆ Pressure tested to 330' (100m)
- ◆ Aluminum marine grade housing coated with two coats of polyurethane and marine grade brass with stainless steel hardware provides corrosion resistance and ideal protection in any environment.
- ◆ 14 electronic push button controls on both the left and right hand grip provides access over 25 functions. Along with the six mechanical push button controls you have access to every important camera function.
- ◆ Electronic controlled manual focus
- ◆ Electronic variable zoom
- ◆ Manual Iris, Gain and shutter speeds
- ◆ Expanded Focus
- ◆ VCR Mode (Play, REW, FF, Stop, Pause)
- ◆ Photo Mode (directly onto memory stick)
- ◆ Index Markers
- ◆ Menu control panel
- ◆ Sensitive dual hydrophones
- ◆ Electronic moisture sensor flashes a red light notifying you if there is any water leaking into the housing.
- ◆ Tally light flashes green while recording
- ◆ Secure lockable safety latches
- ◆ 2 Auxiliary ports
- ◆ Internal flip filter arm with blue water color correction filter installed (second flip filter is optional)

Left Hand Grip Controls

- ◆ Electronic Manual Focus +, -
- ◆ Video Lights on/off - for left/right light arms
- ◆ Screen Display

Right Hand Grip Controls

- ◆ Record/Standby
- ◆ Wide-Angle/Telephoto
- ◆ Variable speed zoom
- ◆ White Balance
- ◆ Manual/Momentary Auto Focus
- ◆ VCR functions

Endeavor and Phenom Electronic Underwater Housings

Each includes camera saddle, internal flip filter with a 67mm UR Pro Blue Water installed, carry handle and O-ring kit.

Endeavor: With 4.3" HD 16:9 LCD rear viewfinder and 94° wide angle lens adapter with full zoom-through capability
(Mfr # VHENLAHD • B&H # AMVHSFX7WAQ) ...**8253.95**

Endeavor: With 4.3" HD 16:9 LCD rear viewfinder and standard dome port lens with full zoom-through capability
(Mfr # VHENDPHD • B&H # AMVHSFX7DPQ) ..**6244.95**

Endeavor: With 3.5" standard definition LCD rear viewfinder and 94° wide angle lens adapter with full zoom-through capability.
(Mfr # VHENLASD • B&H # AMVHSFX7WA).....**6187.95**

Phenom: With standard dome/flat port lens with full zoom-through capability.
(Mfr # VHFZX106 • B&H # AMVHSFX1)**5,089.95**

Phenom: Same as above, plus 3.5" LCD rear viewfinder.
(Mfr # VH106ACFM • B&H # AMPFXZ1BK)**5,693.50**

Endeavor: With 4.3" HD 16:9 LCD rear viewfinder and standard flat port lens with full zoom-through capability.
(Mfr # VHENFPHD • B&H # AMVHSFX7FPQ) ..**5,899.95**

Endeavor: With 3.5" standard definition LCD rear viewfinder and standard dome port lens with full zoom-through capability.
(Mfr # VHENDPSD • B&H # AMVHSFX7DP)**4,241.95**

Endeavor: With 3.5" standard definition LCD rear viewfinder and standard flat port lens with full zoom-through capability.
(Mfr # VHENFPSD • B&H # AMVHSFX7FP)**4,123.95**

Phenom: With 94° wide angle lens adapter with full zoom-through capability.
(Mfr # VHFZX105 • B&H # AMVHSHDRFX1)**6,749.95**

Phenom: Same as above, plus 3.5" LCD rear viewfinder.
(Mfr # VH105ACFM • B&H # AMPFXZ1PK)**7,214.95**

AMPHIBICO

DISCOVERY 10 ARC LIGHT

Ultra Compact Video Arc Light with 10-watt HID Metal Halide Bulb

The preferred source for underwater video, the output of a High-Intensity Discharge (HID) lamp has a color temperature of 6000°- 7500° Kelvin which is daylight condition temperature—needed to bring out the true natural colors of the underwater world. This is significantly higher and much whiter than that of a typical quartz-halogen light whose color temperature is 3000° Kelvin.

Quartz halogen bulbs, which are normally yellow in color, have the tendency of decreasing in brightness as the battery voltage drops. HID light combined with its electronic ballast will keep the output light temperature constant even though the batteries voltage drops. The ballast is capable of drawing less current and keeping lamp at it highest brightness. Due to the large difference in color temperature between the 10w HID Lamp and a 30w Halogen bulb, the perceived output and penetration of the 10-watt HID light is greatly noticeable.

Featuring a compact all-in-one design, this lightweight light is rated up to 330' and is compatible with all Amphibico housings. It comes with a 15" adjustable ball joint extension arm, dual O-ring seal, and video glass reflector with diffused glass (no hot spots, wide angle, and is compatible with 52mm screw-on filters such as neutral density or color correction to control the light). Up to 2 hours continuous burn time on two fully-charged NP-F550 or NP-F570 batteries. (Batteries and charger not included)

Discovery 10 Arc Light with 10-watt HID Lamp (Mfr# VLDL0010 • B&H# AMVLDL0010)**819.50**



Discovery II 35/50-watt HID Arc Light with 20" Aluminum Extension Arm

A 12-volt, 35/50 watt HID light with electronic ballast mounted on a 20" adjustable aluminum arm, the Discovery II is the ultimate professional video light. has been designed for the professional camcorder operator. Made of Marine Grade aluminum construction and fully anodized with a hard coat of polyurethane paint, the Discovery II is tested to a depth of 330'. It features switchable 35/50 Watt HID lamp allowing divers to change the light output from 35w (5200°K) to 50w (4300°K). Has a detachable video diffuser and wet-mateable

connector cable for use with Amphibico's Ultra Pro Power Pack (required).

Discovery II 35/50 Watt HID Arc Light (Mfr # VLALHIDB • B&H # AMVLAHIDB)**1754.95**

Ultra Power Pack Power Pack for Discovery II Lights

Designed to be mounted underneath the Phenom and Endeavor housings, the Ultra Pro Power Pack can power two Discovery II 35/50-watt HID Arc Lights. In addition, it includes two 10-watt LED safety pilot lights. Powered by two Sony NP-1B style batteries (not included), the Ultra Power Pack can power a Discover II for 75 minutes at 35-watts and for 60 minutes at 50-watts.

- ◆ Powered by two NP-1B style batteries (Nicad, NiMH or Lithium-Ion)
- ◆ Infrared LED remote allows you to control the on/off with Phenom and Endeavor.
- ◆ Built-in dual independent smart battery charger (for NP-1B style Nicad, NiMH and Lithium-Ion batteries)
- ◆ Automatic shutdown when battery is depleted to avoid battery discharge
- ◆ Dual 10-watt LED safety pilot lights
- ◆ User interface console with LED to indicate battery and charging status
- ◆ Dual independent ON / OFF switches
- ◆ Wet-mateable connectors for Discovery II

Ultra Power Pack (Mfr # LAPPHIDB • B&H # AMLAPPHIDB)**1399.95**

Discovery Arc Lamp Travel Kits

Discovery Arc Lamp Travel Kit: With one Discovery II HID Switchable 35/50 watt Arc light, 12v Arc lamp and arm, one Ultra Pro power pack, two Swit NP 14.4v batteries and tailored carry case. (Mfr # ALKT001B • B&H # AMALKT001B) ... **3,743.50**



Arc Lamps with Ultra Pro Power Pack mounted under housing

Discovery Arc Lamp Travel Kit: With two Discovery II HID Switchable 35/50 watt arc lights, 12v Arc lamps and arms, one Ultra Pro power pack, two Swit NP 14.4v batteries and tailored carry case. (Mfr # ALKT002B • B&H # AMALKT002B) ..**5,289.95**

AMPHIBICO

DIVE ACCESSORIES

3.5" LCD Color Monitor

High-resolution (140,000 pixels) aluminum constructed external monitor for use with all Amphibico and other brand housings, the monitor comes complete with mounting bracket, sun shade, spare o-ring kit and underwater cable connectors for easy installation. Uses one or two Sony NP-F550/570 or NP-F770 batteries. (not included).



- ◆ Designed for under or above water use
- ◆ Large screen allows easy viewing at arms length
- ◆ Quick disconnect underwater cable system
- ◆ NTSC or PAL compatible (selectable)
- ◆ Display camcorder functions on the monitor
- ◆ High Brightness with built-in CCFL backlight
- ◆ Underwater contrast & brightness controls
- ◆ Underwater color/ B&W switchable
- ◆ Runs up to 12 hours on two Sony NP-F770 batteries
- ◆ Measures 6" x 3 3/4" x 4" (LxWxH)

ACFM0350 (Mfr # ACFM0350 • B&H # AMACFM0350)**699.00**

4.3" HD 16:9 LCD Color Monitor

A fully machined, aluminum constructed external monitor for use with all Amphibico and other brand HD housings, the 16:9 high definition 4.3" color LCD monitor comes complete with mounting bracket, sun shade, spare O-ring kit and underwater cable connectors for easy installation. Runs on 4 AA (Alkaline, Nicad, NiMH or Lithium-ion rechargeable) batteries.



- ◆ Designed for under or above water use.
- ◆ Easily mounts on top of all Amphibico or other brand HD housings.
- ◆ Large 4.3" widescreen (16:9) for easy viewing at arms length.
- ◆ Quick disconnect 5-pin (HD) underwater cable system.
- ◆ NTSC or PAL compatible (auto-detection)
- ◆ Display camera information on monitor.
- ◆ High Resolution (392,000 pixels).
- ◆ True 24-bit digital.
- ◆ True 1080i/720p component video signal directly from camcorder.
- ◆ High brightness with built-in adjustable LED backlight.
- ◆ 4 button access to on screen display functions.
- ◆ Runs of 4 AAA (Alkaline, Nicad, NiMH or Lithium-ion rechargeable) batteries.
- ◆ Runs up to 4.5 hours with Amphibico's 2500 Mwh NiMH rechargeable batteries.
- ◆ Measures 5 1/2" x 5" x 7 1/4" including sunshade and mounting bracket.

ACHDM043 4.3" High-Definition 16:9 Monitor (Mfr # ACHDM043 • B&H # AMACHDM043).....**2169.95**

Optics and Filters



Phenom 94° Dome Port: 0.68x, 94° wide angle lens with full zoom-through capability for the Phenom FXZ1 and Endeavor. (Mfr # OAWA0094 • B&H # AMOAWA0094)**2758.95**

Dome Port Assembly: A great back up lens, fully zoomable which keeps the same field of view as the camcorder. For the Phenom and Endeavor. (Mfr # OADP0001 • B&H # AMOADP0001)**673.95**

Flat Port Assembly: Contains a single, flat, uncorrected element. For the Phenom and Endeavor. (Mfr # OAFP0001 • B&H # AMOAFP0001)**444.95**

7" x 11" Aluminum White Balance & Color Chart

Allows you to calibrate your camera for true color balance when shooting video underwater. (Mfr # ACWB0711 • B&H # AMACWB0711)**84.95**



Phenom Extra Large Rolling Case



Custom Tailored Carry Case for Phenom & Endeavor Housings

Amphibico's Extra Large Rolling Case is a waterproof case that has a telescoping handle for easy carrying of an Endeavor or Phenom underwater system. It features a tongue in groove continuous "O" ring system that makes the case water, moisture and dust

tight. Four press and pull lockable latches (two in front, one on each side) maintains closure while submerged. The closed cell foam interior is water resistant and custom cut for the housing.

- ◆ High impact lightweight HPX resin
- ◆ Two padlockable hasps
- ◆ 3 double-layered, soft-grip handles
- ◆ In-line wheels
- ◆ Vortex valve

ACCX0202 Extra Large Rolling Waterproof Case
For Phenom FXZ1 (Mfr # ACCX0202 • B&H # AMACCX0202)**399.95**

ACCX0203 Extra-Large Rolling Waterproof Case
For Endeavor FXV1 (Mfr # ACCX0203 • B&H # AMACCX0203)**394.95**

UNDERWATER HOUSINGS

Equinox Pro 8 and Pro 10 Series are mechanical underwater housings constructed with rugged and durable PVC material, one-inch cast-acrylic face-plates and stainless-steel hardware. These materials help prevent corrosion in a salt water environment. They feature up to 10 mechanical controls (depending on the model) including power-on/off, record-start/stop, zoom-tele/wide, ND filter, autofocus/manual focus switch, push-button autofocus and auto white balance. The housings are rated to a depth of up to 250' and they are close to neutral buoyancy at approximately 33'. All Pro 8 and Pro 10 housings include a 3-year warranty as well as a BRS (Ballast Release System) for easy travel. Or if trouble occurs on a dive, simply pull the quick release pin on one, of the wings, the wing and handle (ballast) release, the housing now becomes positive and shoots to the surface.



Pro 8 Housings

They include, wide angle lens (for cameras up to 62mm, external color correction filter, internal adjustable ballast, spare parts kit, carrying strap dome port protector, rubber feet for stability on boat decks and D-ring on rear plate for easy hookup to an lanyard.

For Canon GL-2 (Mfr # PP8GL2 • B&H # EQPP8GL2) **1199.95**

For Panasonic AG-DVX100B (Mfr # PP8DVX100 • B&H # EQPP8DVX100) **1149.95**

For Sony DCR-VX2100/DSR-PD170
(Mfr # PP8VX2100 • B&H # EQPP8VX2100) **1249.95**

For Sony HDR-FX7/HVR-V1U (Mfr # PP8FX7V1 • B&H # EQPP8FX7) **1399.95**

Pro 10 Housings

They include EO waterproof bulk head for video out (to surface), spare parts kit, 2.5" color LCD monitor with battery and charger, and a carrying strap.

For Canon XH-A1 (Mfr # XHA1PRO • B&H # EQPCXHA1) **2454.95**

For Canon XG-H1 (Mfr # XHG1PRO • B&H # EQPCXHGI) **2499.95**

For Panasonic HVX-200
(Mfr # HVX200PRO • B&H # EQHVX200PRO) **2749.95**

For Sony HDR-FX1/HVR-Z1U
(Mfr # FX1PRO • B&H # EQFX1PRO) **2249.00**

UNDERWATER LIGHTS



Mini Aqualight

Rated to 175', the Mini Aqualight is a rugged, compact and easily serviced light, designed for the underwater cinematographer. The Aqualight has a 50-watt flood lamp capable of emitting light without hot spots. It produces a beautiful soft, even 120° light that has the appearance of ambient light.

Mini Aqualight Light System: Consists of a 50w quartz-halogen light, battery, charger and control arm. (Mfr # MAL • B&H # EQMAL) **789.95**

Mini Dual Aqualight Light System: Same as above, except it includes two 50w quartz-halogen lights and two control arms. (Mfr # MAL02 • B&H # EQMAL02) **1079.95**



Aqualight

A rugged, compact, and easily serviced light, designed for the underwater cinematographer. The Aqualight has a 100-watt flood lamp capable of emitting light without hot spots. To achieve this, the Aqualight high-impact plastic reflector and glass globe housing the bulb were engineered in tandem. Utilizing refraction and dome port technology, it emits beautiful, soft, even, 180° light that has the appearance of ambient. The light head works with a wide range of bulbs that are easily changed (no tools required).

Large Aqualight Light System: Includes 100w quartz-halogen light with actuating control arm, and 12-volt/12-amp rechargeable battery and charger. (Mfr # AL01 • B&H # EQAL01) **1149.00**

Large Aqualight Light Dual System: Includes two 100w quartz-halogen light with actuating control arm, and two 12-volt/12-amp rechargeable batteries and charger. (Mfr # AL02 • B&H # EQAL02) **1995.00**

UNDERWATER HOUSINGS

For over 38 years Gates has designed and manufactured the world's most durable, reliable and dependable underwater housings. They use 'bulletproof' machined aluminum, 100% mechanical controls, time-proven design methods, and state-of-the-art manufacturing. Built to satisfy the most demanding requirements of commercial divers, marine researchers, professional videographers, salvage operators, military divers, film and TV producers, recreational divers and imaging professionals—Gates housings deliver results 24 hours a day, 365 days a year.



THEY ALL FEATURE

- ◆ All housings are depth rated to 450' (137 meters)
- ◆ "Bulletproof" machined aluminum and black type III 'hard' anodize finish imparts a robust, military-grade finish on the housings. They will withstand abusive handling, scratches, and impacts – just about anything you can reasonably throw at it and still look great. Nickel acetate seals the aluminum pores and makes the housing impervious to attack by salt water or other corrosive elements.
- ◆ Bayonet mounted ports allow quick and easy switching among Flat, Dome, Wide and Super Wide Angle ports, enabling the clearest, sharpest images possible.
- ◆ Housings are born of the same technical expertise that won an Emmy for Technical Achievement.
- ◆ Reliable fingertip controls are 100% mechanical — no sticky buttons, faulty electronics or dead batteries.
- ◆ Quality optics means clarity, sharpness and no vignetting (cutoff dark corners) to spoil your images.
- ◆ Positive lock stainless steel latches confirm the housing is sealed and secure.
- ◆ 2-year renewable warranty on all housings.

HC9 Housing for the Sony DCR-HC9

The HC9 underwater housing sports a big 2 x 3" (51 x 76mm) viewfinder window making the camera LCD easy to see, even from wide viewing angles. Small and compact, it is easy for traveling yet it can accommodate camcorder battery sizes up to the NP-FH70 for maximum shooting between recharges. The housing provides total control of camera functions with reliable mechanical controls, crystal-clear optics and internal color-correcting flip-filter. Gates premium line of distortion-free ports provides the clearest, sharpest images possible; a no-compromises requisite for any HD endeavor. Measures 7.5" x 5.5" x 9.8" with removable handles.



Controls (All Mechanical)

- ◆ Mode (On/Off/Memory) ◆ Photo ◆ Zoom
- ◆ Record/Standby ◆ Assignable Button and Roller
- ◆ Internal Flip Color Correction Filter
- ◆ White Balance (optional, via touch screen)

HC9 Housing without Port (Mfr # 10-10-965 • B&H # GAHHC7)	2125.95
HC9 Housing with WP25 Wide Angle Port (Mfr # 10-10-965C • B&H # GAHHC7WP25)	3015.95
HC9 Housing with GP25A Wide Angle Port (Mfr # 10-10-965B • B&H # GAHHC7GP25A)	2705.00
HC9 Housing with SP25 Standard Port (Mfr # 10-10-965A • B&H # GAHHC7SP25)	2240.95
HC9 Housing with GP25A Wide Angle Port with NightRider HID Pro 20 Video Light (Mfr # 10-15-006A • B&H # GAHHC7K1)	4420.00

UNDERWATER HOUSINGS

FX1

Housing for the Sony HDR-FX1 and HVR-Z1U HDV Camcorders

The FX1 mechanical underwater housing is designed for the Sony HDR-FX1 and HVR-Z1U HDV camcorders. The housing is constructed of bulletproof aluminum, and an anodized and urethane sealed finish with stainless steel positive locking safety latches for strength and durability. The housing provides total control of camera functions with reliable mechanical controls, crystal-clear optics, built-in magnified viewfinder for framing and critical focus, and internal color correcting flip filter.

FX1 Mechanical Underwater Housing (Mfr # 7510101 • B&H # GAHSHDRFX1)
For Sony HDR-FX1 and HVR-Z1U camcorders, no port - rated up to 300'**3990.00**

FX1 Mechanical Underwater Housing (Mfr # 7510103 • B&H # GAHSHDRFX1K2)
With FP44 Flat Port for Sony HDR-FX1 and HVR-Z1U camcorders, rated up to 300'**4439.50**

FX1 Mechanical Underwater Housing (Mfr # 7510105 • B&H # GAHSHDRFX1K4)
With SWP44 wide-angle port for HDR-FX1 and HVR-Z1U camcorders, rated up to 300'**8472.00**



Controls (All Mechanical)

- ◆ Power On/Off ◆ Record/Standby
- ◆ Zoom ◆ Manual Focus
- ◆ Auto / Manual Focus
- ◆ Internal "Flip" Color Correction Filter
- ◆ Neutral Density Filter ◆ Iris
- ◆ White Balance Mode/Set
- ◆ Optional Controls ◆ Gain / WB Presets
- ◆ Shutter Speed ◆ Expanded Focus



FX7/V1

Housing for the Sony HDR-FX7 and HVR-V1U HDV Camcorders

The FX7/V1 housing offers tough, 'bulletproof' construction, reliable mechanical controls and a 2-year renewable warranty. It also offers pro capability with access to 14 camera functions such as manual focus, iris, ND filter and white balance controls. It also features adjustable handle grips allowing you to find the perfect position over fingertip mechanical controls. Use with the optional EM43 (4") high resolution color monitor for easier framing and focus, and Gates premium ports for the sharpest, clearest HD images. Travel lighter by leaving the ballast weight behind. A standard 4 lb. scuba weight can be used at your dive destination. For further convenience, the FX7/V1 with SP44 port and 1620 Pelican rolling case weighs in under the 50 lbs. (23 kg.) airline baggage limit. Accommodates all camcorder battery sizes up to the NPF-970.

Controls (All Mechanical)

- ◆ Power ◆ Record/Standby ◆ Zoom
- ◆ Manual Focus ◆ Exposure / Iris ◆ Menu / WB
- ◆ Internal "Flip" Color Filter ◆ Shutter / Gain
- ◆ Push Auto Focus ◆ Pict Profile/Status Check
- ◆ Assign (#2 & 3) ◆ Expanded Focus / A/M Focus
- ◆ Sel/Push Execute Roller ◆ Neutral Density Filter
- ◆ Internal 'Flip' Macro (optional)

FX7 Mechanical Underwater Housing (Mfr # 75-10-301 • B&H # GAHSHDRFX7): For Sony HDR-FX7 and HVR-V1 camcorders, no port - rated up to 450'**3990.00**

FX7 Mechanical Underwater Housing (Mfr # 75-10-301B • B&H # GAHSHDRFX7KB): With FP44 flat port for Sony HDR-FX7 and HVR-V1 camcorders - rated up to 450'**4440.00**

FX7 Mechanical Underwater Housing (Mfr # 75-10-301A • B&H # GAHSHDRFX7KA): With SP44 standard port for Sony HDR-FX7 and HVR-V1 camcorders - rated up to 450'**4440.00**

FX7 Mechanical Underwater Housing (Mfr # 75-10-301C • B&H # GAHSHDRFX7KC): With SWP44B super wide angle port for HDR-FX7 and HVR-V1 camcorders - rated up to 450'**7955.00**

UNDERWATER HOUSINGS

Housing for the Canon XH-A1 and XH-G1 HDV Camcorders

Like its bigger XL-H1 cousin, the Gates XHA1/G1 housing is designed for the discriminating diver. Legendary Canon optics paired with Gates reliability return underwater images of unmatched caliber. Iris, focus, white balance, custom key and custom preset controls, adjustable handle grips, optional EM43 high resolution color monitor and Gates premium ports are available in this feature-rich design. The XHA1/G1 is also classically Gates: tough, 'bulletproof' construction, reliable fingertip mechanical controls and a two year renewable warranty. Reliability, durability, dependability – the Gates hallmark for over 38 years.



- ◆ Adjustable handle grips let you find the perfect position for comfort and control.
- ◆ Advanced Controls such as manual focus, iris and white balance, custom keys and custom presets are standard
- ◆ Internal Flip Filter provides quick, effortless use of the color correction filter. Blue or Green water versions available.
- ◆ With the optional EM43 high-resolution external color monitor, HD framing and focus is easy.
- ◆ Travel lighter by leaving the ballast weight behind. A standard 4 lb. scuba weight can be used at your dive destination.

XHA1/G1 Housing for Canon XH-A1 & XH-G1: Without ports, mechanical controls, rated up to 450' (Mfr # 20-10-301 • B&H # GAHCXHA1)..... **5745.00**

XHA1/G1 Housing for Canon XH-A1 & XH-G1: With SP44 standard port (Mfr # 20-10-301A • B&H # GAHCXHA1SP44)**6159.00**

XHA1/G1 Housing for Canon XH-A1 & XH-G1: With SWP44 super wide-angle port (Mfr # 20-10-301C • B&H # GAHCXHA1SWP4)**CALL**



Housing for the Canon XL-H1

The XL-H1 housing is the choice of professionals for serious underwater HD imaging. Standard is the 2.5" color monitor with an optional upgrade to a huge 4.1" monitor. Bayonet mounted ports allow quick change amongst Flat, Dome and Super Wide enabling the clearest, sharpest images possible – a necessary requisite for any HD endeavor. Adjustable handles provide perfect grip and easy access to critical functions like white balance, iris, manual focus and ND filter. The housing comes with Gates 2-year renewable warranty and legendary customer service.

- ◆ Accommodates all camcorder battery sizes for maximum shooting between re-charges.
- ◆ Included EM253 monitor gives you big 2.5" subject framing.

Controls (All Mechanical)

- ◆ Power On/Off ◆ Record/Standby ◆ Zoom
- ◆ Auto / Manual Focus ◆ Neutral Density Filter
- ◆ Internal "Flip" Color Correction Filter
- ◆ Manual Focus, Manual Iris
- ◆ White Balance Mode/Set

XLH1 Mechanical Underwater Housing: For Canon XL-H1 HD camcorder, no port - rated up to 350'. (Mfr # 2010201 • B&H # GAHCXLH1)**7990.00**

XLH1 Mechanical Underwater Housing: With FP44 flat port for Canon XL-H1 HD camcorder - rated up to 350'. (Mfr # 2010201B • B&H # GAHCXLH1FP44)**8440.00**

XLH1 Mechanical Underwater Housing: With SP44 standard port for Canon XL-H1 HD camcorder - rated up to 350'. (Mfr # 2010201A • B&H # GAHCXLH1SP44)**8440.00**

XLH1 Mechanical Underwater Housing: With SWP44 wide angle port for Canon XL-H1 HD camcorder - rated up to 350'. (Mfr # 2010201C • B&H # GAHCXLH1SWP4)**12,472.00**

UNDERWATER HOUSINGS

Housing for the Panasonic HVX-200

Engineered for the working professional, the HVX200 housing is a comprehensive inventory of features for serious underwater imaging. Adjustable handles provide perfect grip and easy access to critical functions like white balance, iris, manual focus and user presets. Bayonet mounted ports allow quick change amongst Flat, Dome and Super Wide angle, enabling the clearest, sharpest images possible – a necessary requisite for HD endeavors. Of course the HVX200 is classic Gates construction: durable ‘bulletproof’ machined aluminum and 100% reliable mechanical controls.



- HVX200 Mechanical UW Housing:** For Panasonic AG-HVX200 camcorder, no port - rated up to 450'. (Mfr # 7510201 • B&H # GAHPAGHVX200)**6860.00**
- HVX200 Mechanical UW Housing:** With SP44 standard port for Panasonic AG-HVX200 camcorder. (Mfr # 7510201A • B&H # GAHPAGHVX20Q)**7310.00**
- HVX200 Mechanical UW Housing:** With FP44 flat port for Panasonic AG-HVX200 camcorder. (Mfr # 7510201B • B&H # GAHPAGHVX20Y).....**7310.00**
- HVX200 Mechanical UW Housing:** With SWP44 wide angle port for Panasonic AG-HVX200 camcorder. (Mfr # 7510201C • B&H # GAHPAGHVX20Z)**11,342.00**



Gates Underwater Ports

The best camera in the world can't make up for poor optics. This mantra is the driving force behind the Gates family of ports. The finest underwater images simply require the finest optics. While this may seem obvious, poor optical design and materials introduce compromises -- distortions, low resolution, and ultimately inferior images. With Gates standard and precision ports, there are no compromises. They are superior optical products, and won't limit the capabilities of your camera. High-resolution and distortion-free, they represent the finest optics available for

underwater imaging. Professional to amateur, super wide to macro, the Gates family of ports represent a variety of features and optical designs to suit a wide range of needs, conditions and experience.

Port Types - A Selection Guide

When selecting a port for use with your Gates housing, the most important questions relate to the subject and purpose of your images. Consider the following questions to help simplify your choice:

Subject –

What subject(s) are you imaging? Are they small or large? Or both? Will they let you close or must you be at a distance?

Purpose –

How will the images be used? Broadcast TV? Trip memories? DVD Publication? Entertain friends/family?

Feature	Gates Ports	Gates Precision Ports
Design for Underwater Use	No. Optics designed for air use and adapted for underwater.	Yes. Optic designed specifically for underwater use.
Resilience	Excellent. Optical polycarbonate dome has anti-scratch coating and inherent resilience.	Moderate. Glass elements with anti-reflective coating are susceptible to scratches and abrasions.
Field Serviceable	Yes. Optical polycarbonate dome is field replaceable.	No. Precision ports must be returned to Gates for service.
Resolution	Very Good. Premium AR coated glass elements utilized.	Exceptional – always exceeds that of camera.
Distortion	Minor. Optical polycarbonate dome has slight inherent edge distortions.	None. Precision ports are distortion free edge to edge – no compromises.

UNDERWATER PORTS

**Flat (Macro) Port**

Capturing the world of 'small' requires a macro port, which can reveal amazing colors and behaviors of tiny underwater critters. Macro imaging starts at subjects about 1.5" and smaller.

The Flat (Macro) Port – contain a single, flat, uncorrected element. The field of

view becomes narrowed underwater, subject to the same refraction as a diver looking through a facemask. It allows full camera zoom capability, and accommodates diopters to increase the magnification of a macro subject. The Flat Port contains a single optical acrylic element that is forgiving to minor bumps and handling, and it is field replaceable.

FP-25: Flat port for HC9 housing (Mfr # 1025003 • B&H # GAFPSPC101)..... **115.00**

FP-35: Flat port for GL-2 housing (Mfr # 3525003 • B&H # GAFPSVX2000)... **158.00**

FP-44: Flat port for FX7/V1, FX1/Z1, XHA1/G1, XLH1, HVX200 housings. (Mfr # 7525003 • B&H # GAFPSHDFX1)..... **449.95**

Replacement Flat Port Element: For FP25 (Mfr # 1025006 • B&H # GAFPEPC101), for FP35 (Mfr # 3525004 • B&H # GAFPEVX2000) **69.00**

Replacement Acrylic Element: For FP44 flat port. (Mfr # 7525005 • B&H # GARAFEP44) **169.95**

Standard (Dome) Ports

Standard Ports (sometimes called a dome port) are optically corrected to provide a normalized view of the underwater world. That is, they compensate for distortions or magnifications inherent to the underwater realm so the camera view below water is almost exactly that above water. A

Standard Port is made of optical polycarbonate, acrylic or glass and allows little or no zoom-through capability. Resilient field replaceable dome is forgiving to bumps and handling.

The Standard Port is only recommended as a budget option, or for use with third party lenses such as the Century Optics or Sony adapter lenses. An A/R coated glass dome rated to 150' is also available.

SP25: Standard Port for HC9 (Mfr # 1025001 • B&H # GASPDSPC101)..... **115.00**

SP44: Standard Port with Acrylic Dome for FX7/V1, FX1/Z1, XHA1/G1, XLH1, HVX200 housings (Mfr # 7525002 • B&H # GASPSHDFX1)..... **449.95**

SP44: Standard Port with Glass Dome for FX7/V1, FX1/Z1, XHA1/G1, XLH1, HVX200 housings (Mfr # 7525002B • B&H # GASPSDPAGHVX) **789.95**

SP45X3: For XL2 with 3x lens (Mfr # 2025101 • B&H # GAPCXL23X) **200.00**

SP45X16: For XL2 with 16x lens (Mfr # 2025102 • B&H # GAPCXL216X) **200.00**

SP45X20: For XL2 with 20x lens (Mfr # 2025103 • B&H # GAPCXL220X) **200.00**

Replacement Acrylic Dome: For SP45x20, SP45x16, SP45x3 Ports (Mfr # 2025104 • B&H # GADR)..... **69.95**

Replacement Acrylic Dome: For SP44 (Mfr # 7525004 • B&H # GARADSP44) .. **169.95**

Replacement Glass Dome: For SP44 (Mfr # 7525010 • B&H # GARGDSP44) **399.95**

**Wide Angle Ports**

Contain several lens elements to encompass a larger underwater view. It is the most commonly used port as it affords a very broad field of view and large depth-of-field. Vignette free, they have little or no zoom capability (that capability is available on the Super Wide Angle port). Gates offers two

versions of Wide Angle ports, the GP Series and Precision Series.

GP Series ports have a tough aluminum shell and a field-replaceable optical polycarbonate dome. They feature anti-reflective coating for very good image resolution, and their field of view is approximately 70° depending on the camera/port combination. They can be used in the air and water and for air/water split shots. Ideal choice for extreme use conditions or when field replacement of a damaged dome is necessary.

Precision Series wide angle ports are made of BK-7 optical-grade glass, are coated with a proprietary anti-reflective coating, and then nitrogen purged/vacuum-sealed into an aluminum shell to provide the sharpest, clearest underwater images possible. The field-of-view is 70° to 90° depending on the camera/port combination. They are free of distortion and are very high resolution – the ideal choice for TV / DVD production. The front dome element has a hard coating and is protected by a shade, it is not field replaceable, so care must be exercised to avoid contact with sharp objects (like coral).

GP-25 (Mfr # 1025016 • B&H # GAWAP): Wide angle port for TRV950/TRV900, PDX10/PD100, PC and MC Series Housings **580.00**

WP-25 (Mfr # 1025014 • B&H # GAPWAPC110): Precision Series wide angle port for TRV950/TRV900, PDX10/PD100, PC and MC Series housings **890.00**

Super Wide Ports

One of world's finest underwater optics, Super Wide Ports provide a super wide 110° with full zoom-through capability. Now you can capture big creatures at 110° super wide field of view, then zoom to maximum telephoto and fill the frame with a mere 1.5" subject. Furthermore, they can be used in both air and water, as well as "split" air/water images.

The ports are constructed entirely of BK-7 optical glass elements and coated with a proprietary High Efficiency Broad Band Anti-Reflective (HEBBAR) coating for maximum light transmission. They are then nitrogen purged/vacuum sealed in a dust-free environment, ensuring no foreign matter or condensation to spoil your image. The optics are analyzed and tested for compatibility with HD cameras to ensure no degradation of image quality.

While the front dome element has a hard AR coating and protected by a shade, it is not field replaceable. Care must be exercised to avoid contact with sharp objects (like coral).

SWP25 Precision Series 110° super wide-angle port for PC/MC and TRV housings (Mfr # 2525006 • B&H # GAPSWAPC110) **2695.00**



NITERIDER UNDERWATER LIGHTING

HID Pro 20

Flexible, Powerful 20-watt HID Illumination

NiteRider lighting systems are recognized worldwide as the most robust and reliable hands free lighting systems, able to stand up to the punishing demands of technical, military, cave and commercial divers. For imaging applications, NiteRider HID Pro is a compact yet powerful 20-watt dual head light system (equivalent to 80w halogen), with an extended 1.9 hour burn time and a big 90° beam angle. It comes with a 13.2v 4 Amp-hour NiMH battery, a fast 3.5-hour international smart charger, and an incredible lifetime warranty.

NightRider HID Pro 20 Video Light Pak with Housing Bracket - Rated up to 500'. (Mfr # 5025059 • B&H # GAHIDP20B)**1,715.00**



HID Pro 40

Switchable 10/20/30 or 40-watt HID Lighting System

The HID Pro 40 sets a new standard in underwater lighting. With dual beams in two light heads, the HID Pro 40 changes on demand between 10, 20, 30 and 40 watts of powerful HID illumination. Adjust the output to suit your specific needs: extra long burn times at 10 watts, or penetrating power at 40 watts (equivalent to 160w halogen). It offers a wide 90° beam angle and daylight-balanced 6000°K color temperature. It comes complete with a 13.2v 4 Amp-hour NiMH battery and fast 3.5-hour international smart charger. Run time is 3.5 hours at 10 watts and 50 minutes at 40 watts. Inheriting the robust and reliable reputation of the NiteRider brand— allowing it to stand up to the punishing demands of technical, military, cave and commercial divers— it comes with an incredible lifetime warranty.

NightRider HID Pro 40 video light pak with housing bracket - Rated up to 500'. (Mfr # 5025096 • B&H # GAHIDP40B)**2,715.00**

Green Force HID 50

Light System

The compact Green Force HID 50 system offers sturdy and flexible underwater illumination that is easy to use and lightweight for travel. The small light heads burn 10 watts each for a full 2 hours on an FI battery or 4 hours on a FII (fast, international 3-hour smart charger included). It provides daylight-balanced 6200°K color temperature, while a wide 110° diffuser provides gentle, even light coverage. Well suited to the recreational videographer, the HID 50 system is durable and robust, and fully integrated to Gates housings.

Green Force HID 50 video light pak with FIII battery, rated up to 300'. (Mfr# 5025097 • B&H# GAGFHIDL50)**2,374.95**

Green Force HID 250

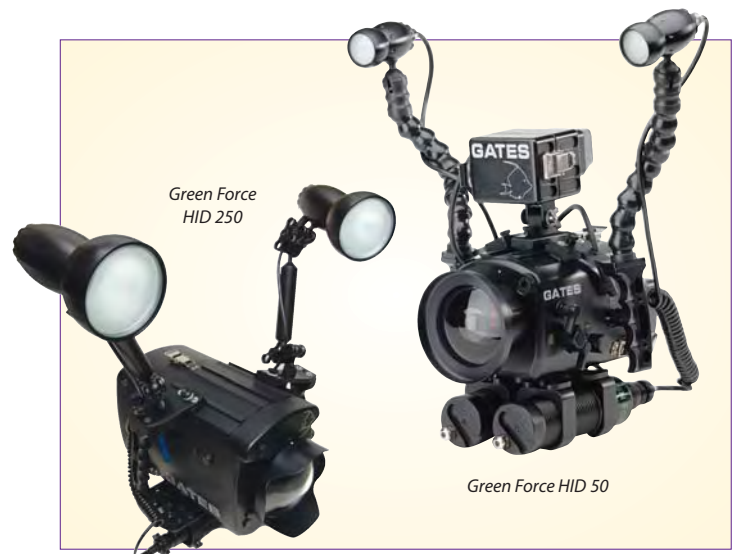
Light System

With two powerful 50W HID light heads providing an impressive 100 watts and 6000 lumens, the Green Force HID 250 system is the most powerful battery-driven video lighting system available anywhere. Suitable for daytime fill, it casts a warm 3800°K color temperature, returning much of the reds and yellows otherwise lost to the water for richer, more colorful underwater images. The beam spread is a wide 110° and evenly distributed by a glass diffuser. With robust, high-impact bulbs and long burn times, the HID 250 is an unequalled system.

- ◆ Available with 55 minute FII battery or 100 minute FIII battery
- ◆ Includes international, fast 3-hour smart charger.
- ◆ Reliable on/off power switching
- ◆ Integrated mounting to Gates housings

Green Force HID 250 video light pak with FII battery, rated up to 500'. (Mfr # 5025100A • B&H # GAGFHIDL250A)**3,825.00**

Green Force HID 250 video light pak with FIII battery, rated up to 500'. (Mfr# 5025100B • B&H# GAGFHIDL250B)**4,275.00**



UNDERWATER ACCESSORIES

**Underwater Tripod**

The hallmark of any professional underwater sequence is camera stability. With the Gates Tripod, shaky shots are now history. Featuring widely spaced and fully articulating legs, the Gates Tripod provides a stable platform for any Gates housing. Each leg is extendible from 7 to 18" for flexibility in rough rocky to flat sandy bottom terrain. Point each front leg

forward and the Gates Tripod adds stability for tricky wall subjects, too.

The tripod is also designed for compactness when not in use. Each leg quickly and neatly folds up underneath the housing around the integrated Green Force battery mounts. No more cradling a big bulky tripod dangling from your housing. Construction is 100% stainless steel and anodized aluminum, so you know it will withstand even the toughest use.

Tripod for Small Gates Housings (Mfr# 5025101A • B&H# GATS)**569.95**

Tripod for Large Gates Housings (Mfr# 5025101B • B&H# GATL)**569.95**

**Gates Pole III
Versatile Pole Cam
with Articulating Control**

Your ticket to capturing underwater images without getting wet! It mounts directly to your Gates housing, and has an articulating head for viewing in all directions, including up and down pivot. Video can be viewed above water too, with an optional video out connector, cable and a Gates external color monitor mounted to the handle for easy viewing. The Pole III

is 8' and separates into two sections for easier travel. (Mfr # 5025072)

White Balance Slate

The WB slate is like having a third arm to hold a white card in front of the lens while setting the white balance. Use the other side for taking notes and camera settings. Integrates seamlessly with NiteRider light heads and arms. (Mfr# 5025081 • B&H# GAWBSBA).....**77.00**



LIGHT & MOTION

**BLUEFIN HD****Underwater Housing for the
Sony HDR-FX1 and HVR-Z1U**

The Bluefin HD is an electronic underwater housing constructed from industrial grade aluminum, machined and anodized with a depth rating of 400'. All primary camera controls are accessed by infrared through the housing body. This prevents the need for mechanical controls to penetrate the housing, greatly decreasing the chance of a

flood. The housing has an advanced feature set that is laid out in a compact, easy to use design.

Controls include power on/off, record start/stop, double tap variable zoom control, electronic manual focus, momentary auto focus on/off, manual iris and gain, shutter speed, manual push white balance and neutral density filter. The Smart Grip Handles provide access to VTR playback for instant footage review. Flip Down Color Correction Filter provides easy transitions between ambient and artificial light. There is also a Flip Macro Lens that can be engaged or disengaged at any time during your dive. The housing comes with the standard flat port. This allows you to capture a variety of subject matter from medium wide, to macro. With the Flip Macro Lens in place the flat port will give you the capability for super macro footage.

Bluefin HD (Mfr # 852-0096 • B&H # LIBHSFX1): For HDR-FX1**5999.95**

Bluefin HD (Mfr # 852-0097 • B&H # LIBHSZ1U): For HDR-Z1U**5999.95**

Sunray 1000 LED Light

More reliable and efficient than HID lights, this solid state 1000 lumens LED lights consumes less than 12 watts of power, while delivering the output as a 22 watt HID. Solid state construction means extremely rugged, nothing to break—no need to open the light head. Completely reliable with 9 separate LED's in each light head (18 total per system). Rated for 50,000 hours service life. 1000 lumen output (per light head); three power settings; 6500K color temperature; charge time of 1.5 hours; 65 minutes of burn time on high, 130 on low; Multi-Chem charger accepts 110v-220v range; memory-free NiMH batteries; self-switching 110/240v Multi-Chem charger.

(Mfr # 850-0061 • B&H # LISR1000)**2299.00**

