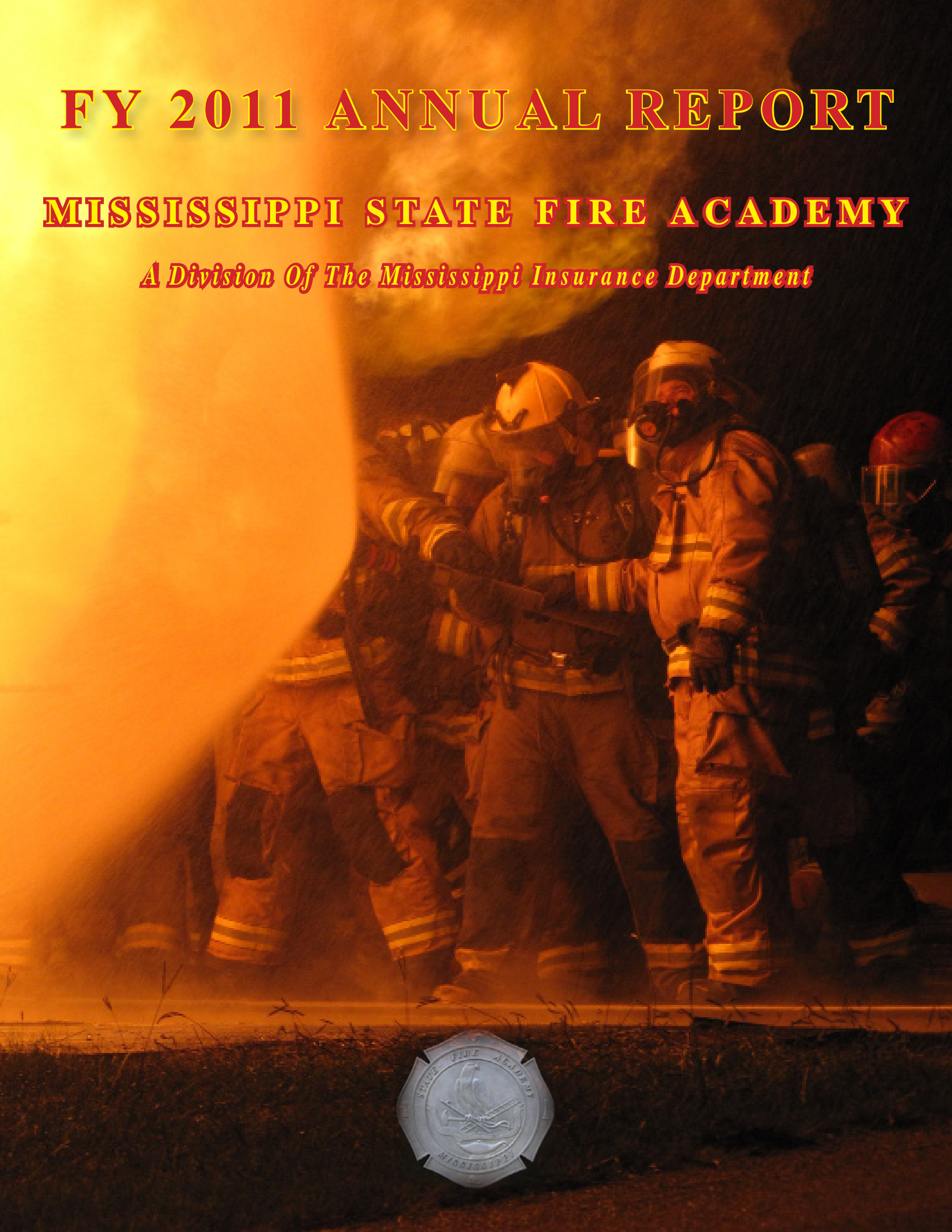


FY 2011 ANNUAL REPORT

MISSISSIPPI STATE FIRE ACADEMY

A Division Of The Mississippi Insurance Department





Mississippi State Fire Academy Advisory Board

President of the
Mississippi Fire Chiefs Association
Chief Rob Martin

President of the
Mississippi Fire Fighters Association
Mr. Brad Smith

State Fire Marshal's Office
Chief Deputy Ricky Davis

President of the
Mississippi Association of Supervisors
Mr. Larry Havard

President of the
Mississippi Municipal Association
Mayor Charley Dumas

Manager of the
State Rating Bureau
Mr. Joe Shumaker



Index

Advisory Board.....	2
Index.....	3
Executive Summary.....	4
From Executive Director Reggie Bell.....	5
Introduction.....	6
Organizational Chart.....	7
State Fire Academy of Mississippi Financial Statement.....	8
Grant Information.....	9
Statistics.....	10
Students Trained by County of Sending Organization.....	11
Certification Bureau.....	12-13
Extension Services Bureau.....	14-15
Special/Industrial Bureau.....	16-17
Other Training & Services.....	18-19
Associate Instructors.....	20
Organizational Affiliates.....	21
FY 2011 Participation Report by Type of Program.....	22-27
FY 2011 Participation Report by Organization.....	28-47



It is with great pleasure that I present to you the 2011 Annual Report of the Mississippi State Fire Academy. Two thousand eleven was a tremendous year for the Academy, marked by major accomplishments that promote our commitment to excellence and our dedication to service.

We would like to thank you for your continued support of the fire service in the State of Mississippi and the State Fire Academy as we continue to be one of the nation's best fire and emergency response training centers.

Executive Director



From Executive Director Reggie Bell

The Mississippi State Fire Academy continues to assist you in all of your fire and emergency response training needs. The Academy is dedicated to providing cutting edge technology training to emergency responders from municipal, volunteer, and industrial fire departments within the state, the nation, and the world. We currently offer eighty-six courses taught on-campus or in a field delivery format. We utilize twenty-nine full time staff instructors and fifty-seven associate instructors to deliver these courses. For the first time in the history of the Academy, student numbers exceeded 17,000 in FY 2009. 2011 saw a slight decrease in student numbers.

During the 2010 session, the Mississippi Legislature and Governor Barbour approved \$2.4 million dollars in general obligation bonds for the purpose of constructing four (4) new, state of the art classrooms on our campus. With the completion of these additional classrooms, scheduled for March 2012, future courses will be developed and delivered. Also, current existing classes can be added to meet the fire service needs. The repairs and renovation to the Fire Safety Education Building began in May 2011 with a projected completion date of May 2012. We are currently working with our congressional members in Washington to secure additional funds to enlarge our on-campus dormitory.

Our goals are to improve the Academy's infrastructure and curriculum to be more conducive to the learning environment. In 2009, the Academy added a trench rescue & emergency shoring training prop, a 2009 custom pumper, and three (3) Katrina Cottages that will be used for fire code inspection and fire safety training. Development and revisions of current and new programs continue to insure current national standards are met and exceeded. The Academy, having accreditation with 10 NFPA standards consisting of 22 levels by the International Fire Service Accreditation Congress (IFSAC), completed the process of obtaining accreditation on 11 NFPA standards consisting of 25 levels accredited by National Board on Fire Service Professional Qualifications (ProBoard) in 2009 for dual accreditation. The Academy continues to secure grants on a state and federal level to upgrade our facilities and provide low cost and the highest levels of emergency response training available anywhere.

A program that has gained tremendous attention is our Fire Academy for Elected/Public Officials. This program is designed to be a fun day. It familiarizes the elected/public officials with the basic duties and operations of their local fire department. Elected/Public Officials from state, municipal, and county governments have attended this one day course. Fire departments have benefited from the experience gained in this course from their government leaders.

Tours of our training facility have become quite popular with local schools for field trips. We also welcome daycares, senior citizen groups and church groups, as well as both public and private schools. A brief education/information program is included along with the tour of the Academy's 85 acre facility explaining all aspects of fire fighter training. Information and scheduling is provided by the Academy's Public Relations Department. There is no charge for these tours.

“MAKING A DIFFERENCE WHEN IT MATTERS THE MOST”



Introduction

Mississippi Code Annotated 1972, Section 45-11-7 (1) creates the State Fire Academy for the purpose of training and education of persons engaged in municipal, county, and industrial fire protection and designates it as a division of the Mississippi Insurance Department. Section 45-11-7 (4) officially designates the Academy as the agency of the state to conduct training for fire personnel on a statewide basis in which members of all duly constituted fire departments may participate. Section 45-11-203 references that the uniform training standards for all paid fire fighters shall consist of the satisfactory completion of a training program administered by the State Fire Academy. Section 83-1-39 requires one member of the sheriff's department be the county fire investigator and to attend training at the State Fire Academy in arson investigation.

Constructed in 1975, the Academy campus is located on approximately 85 acres with nineteen buildings. Student course length varies from one day to six weeks. Students stay on campus in the dormitory, which has seventy-five beds, and are provided two meals a day in the cafeteria. Being a self-contained facility, our staff is responsible for all routine maintenance to the facility grounds, buildings, vehicles, and repairs to any equipment used for this upkeep and equipment/props used for student training.

The Academy is currently one hundred percent (100%) special funded through a tax of one half of one percent (1/2 of 1%) of the gross premium receipts of fire insurance policies sold in the state, and course collection fees. Personnel Services account for approximately 68% of the overall Academy budget, and that is an area that will continue to grow in order to keep the current level of professional staff for training and to maintain the status as the number one training facility.

The Academy began receiving federal grant funds during fiscal year 2001, and it is anticipated that this funding should continue. The grants are for specialized training in Terrorism Response, Hazardous Materials Incidents, National Incident Management Systems (NIMS) and National Fire Academy courses. The grants are one-hundred percent reimbursable in federal grant or sub-grant funds. Classes are taught on and off campus on a request basis at low or no cost to the departments around the state. The Academy continues to secure grants on a state and federal level to upgrade our facilities and provide the highest levels of emergency response training available anywhere.

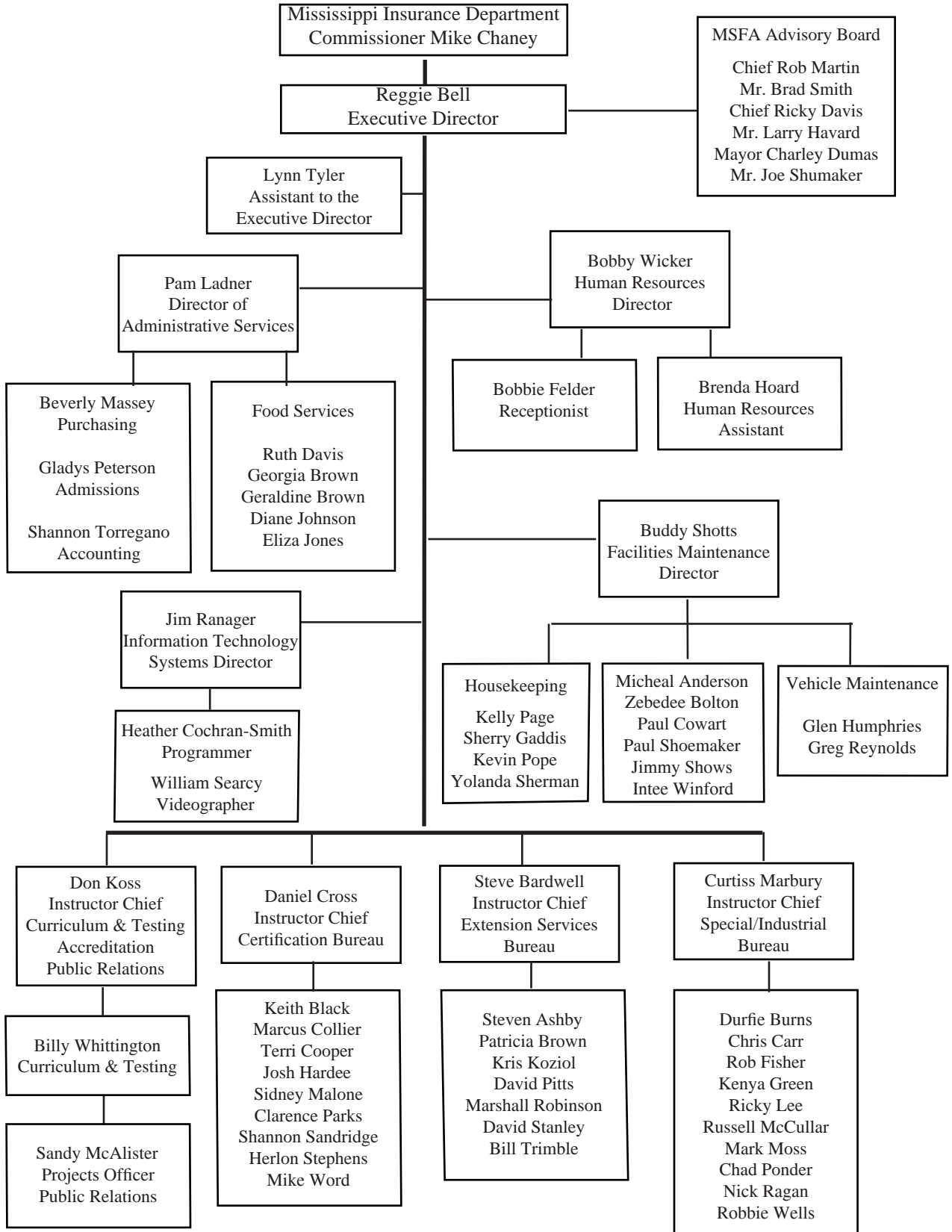
The Academy continues to be one of the nation's most outstanding fire protection training centers and carries out its duties of serving and protecting Mississippians and visitors to our great state with tremendous skill and dedication. The innovative thinking, policy and procedures have resulted in many lives saved and safer communities, serving over 16,000 fire fighters from across the state. Mississippi fire service personnel represent some of the best-trained fire fighters in the nation. The training programs delivered at the Academy are dynamic in nature in order to provide technological support and to meet changing standards for all Mississippi fire fighters.

**OUR MISSION IS
"TO SERVE THE MISSISSIPPI FIRE SERVICE COMMUNITY AND THE WORLD
BY PROVIDING QUALITY EDUCATION AND TRAINING IN FUNDAMENTAL AND ADVANCED SKILLS
TO SAVE LIFE AND PROPERTY."**

OUR GOAL IS TO "MAKE A DIFFERENCE!"



Organizational Chart





**State Fire Academy of Mississippi
Fund Balance Financial Statement
July 1, 2010 to June 30, 2011**

Beginning Fund Balance July 1, 2010:	\$3,017,156.05
Income/Revenue Collections:	
Fire Tax (1/2 of 1% of the gross premium receipts of fire insurance premiums levied)	\$4,101,250.40
Course Fees and Memorabilia Sales	\$1,024,242.64
Sub Grant Funds-Passed through other State Agencies	\$ 427,368.30
Federal Grant Funds-Direct	\$ 25,524.09
Other Miscellaneous Income	<u>\$ 1,297.92</u>
TOTAL Income/Revenue Collections:	\$5,579,683.35
Expenses:	
Salaries, Wages, Fringe Benefits	\$3,619,570.84
Travel	\$ 33,195.82
Contractual Services	\$ 542,460.14
Commodities	\$ 634,697.52
Campus Improvements	\$ 450,905.59
Equipment Purchases	\$ 149,939.73
Resale Merchandise	<u>\$ 47,028.50</u>
TOTAL Expenses:	\$5,477,798.14
 Ending Fund Balance June 30, 2011:	 \$3,119,041.26

MS Code Annotated Section 45-11-5:

Creation of a separate account known as the "State Fire Academy Fund" for the deposit of a tax of one-half of one percent (1/2 of 1%) of the gross premium receipts of fire insurance policies levied in the state.

MS Code Annotated Section 45-11-7 (1):

The State Fire Academy was created for the purpose of training and education of persons engaged in municipal, county and industrial fire protection.

The Academy is officially designated as the agency of this state to conduct training for fire personnel on a statewide basis to all duly constituted fire departments.

The Commissioner of Insurance may establish and charge reasonable fees for the training programs and other services provided by the Academy.



Grant Information

The Academy was able to receive grant funds directly from the Federal Emergency Management Agency/National Fire Academy. This grant was utilized to pay for statewide deliveries of programs offered by the National Fire Academy.

Grant Funds Received: \$24,092.07
Deliveries Offered: 101
Students Participating: 1,437

The Mississippi Office of Homeland Security under the MS Department of Public Safety, awarded grant funds from the State Homeland Security Program. This grant was utilized for on campus and field delivery programs that have been approved through the Office of Domestic Preparedness. Course offerings include Rope Rescue, Confined Space Rescue, Hazardous Materials Awareness/Operations, Hazardous Materials Technician, Trench Rescue, and NIMS courses.

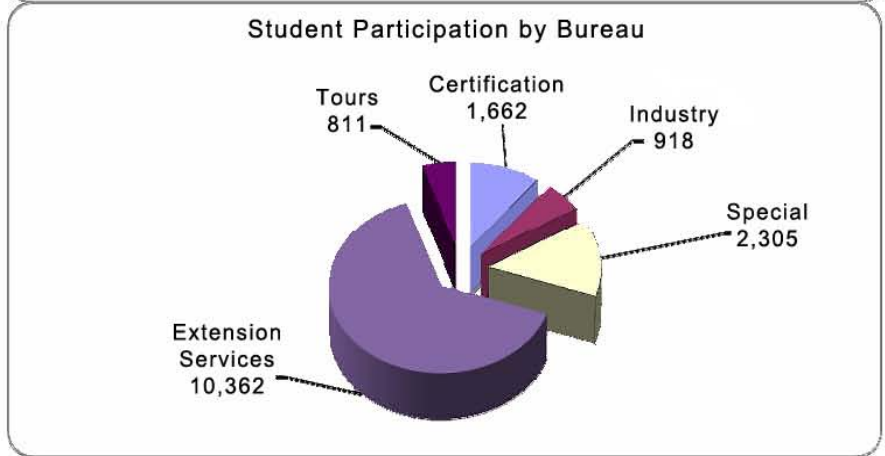
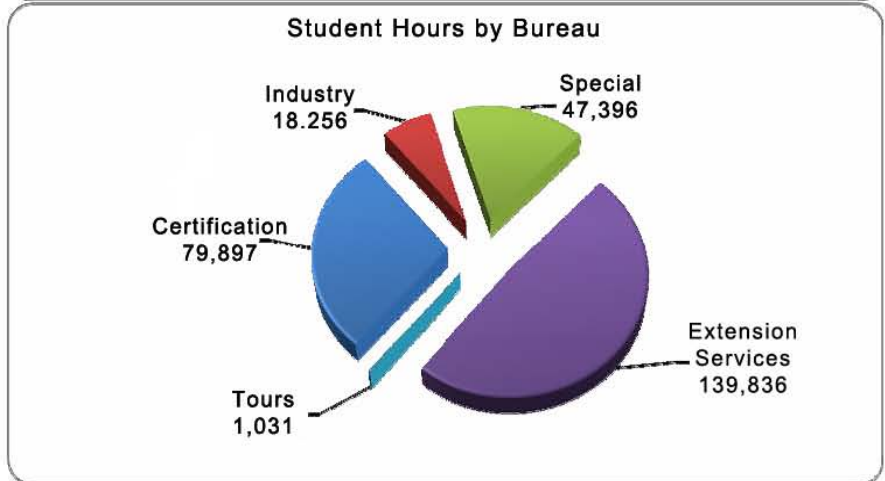
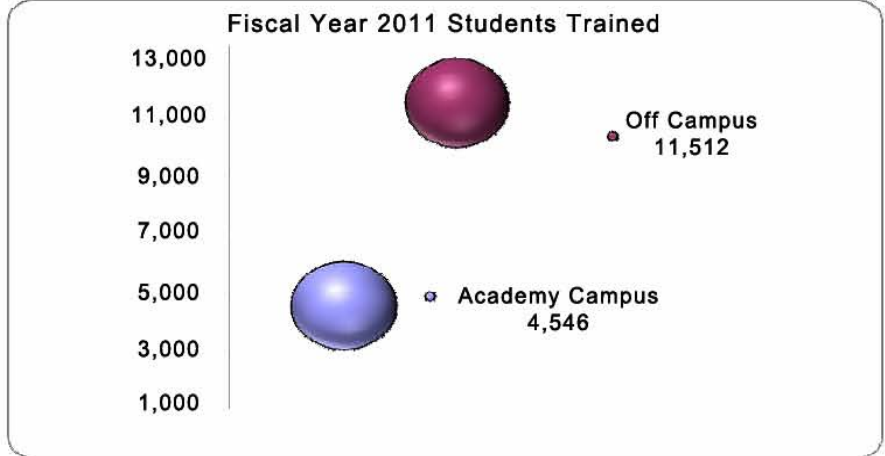
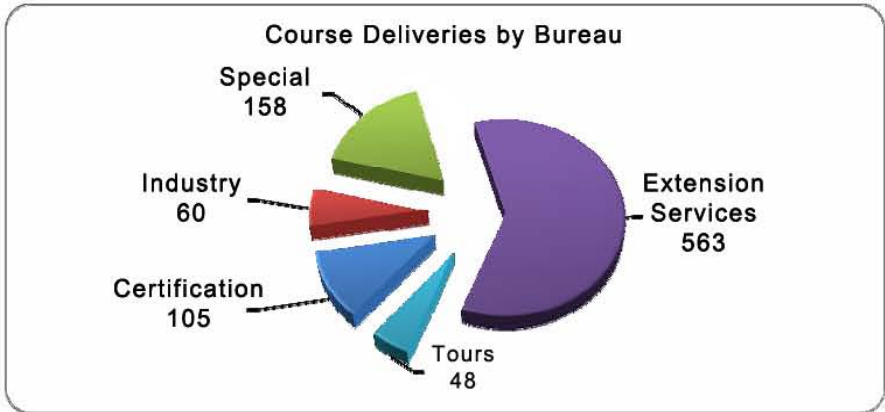
Grant Funds Received: \$192,143.66
Deliveries Offered: 102
Students Participating: 1,543

The Mississippi Emergency Management Agency awarded grant funds from the Hazardous Materials Emergency Preparedness, under the U. S. Department of Transportation. This grant was utilized for the delivery of Hazardous Materials Technician I, Hazardous Materials Technician II, Hazardous Materials Awareness/Operations, and Fire Chemistry.

Grant Funds Received: \$171,259.09
Deliveries Offered: 62
Students Participating: 975

The Mississippi Liquefied Compressed Gas (LC Gas) Board of the Mississippi Insurance Department provided PERC grant funds for classes statewide to help emergency responders better understand the hazards of LP gases and prepare for the response to uncontrolled release of LP gas or fire.


Grant Funds Received: \$40,000.00
Deliveries Offered: 14
Students Participating: 743



A photograph of four firefighters in full protective gear, including helmets and jackets with reflective stripes, standing in front of a large, intense fire. The scene is dimly lit, with the primary light source being the fire itself, which creates a hazy, orange glow. The firefighters are positioned in a line, facing away from the camera towards the fire. The text 'CERTIFICATION SERVICES BUREAU' is overlaid in the center of the image.

CERTIFICATION SERVICES BUREAU

- Courses are designed to provide career, combination, and volunteer fire departments a wide range of programs that conform to National Fire Protection Association (NFPA) standards.
- Most courses have obtained International Fire Service Accreditation Congress (IFSAC) and National Board on Fire Service Professional Qualifications (PROBOARD) designation.
- Course deliveries consist of campus, field, contract programs, and distant learning programs.
- Administers the Candidate Physical Ability Test (CPAT) examination for the Mississippi Fire Personnel Minimum Standards and Certification Board (MSCB).



Candidate Physical Ability Test (CPAT)
Candidate Physical Ability Test (CPAT) Orientation
Emergency Medical Care
Emergency Medical Care: Train-The-Trainer
Fire Department Safety Officer 1521
Fire Department Safety Officer 1521: Field Delivery

Fire Fighter 1001-I-II

Fire Fighter 1001-I-II: Field Evaluation

Fire Inspector 1031-I

Fire Inspector 1031-II

Fire Investigator 1033

Fire Officer 1021-I-II

Fire Officer 1021-I-II: Field Evaluation

Fire Officer 1021-I-II: Train-The-Trainer

Fire Service Chaplain

Fire Service Instructor 1041-I-II

Fire Service Instructor 1041-III

Fire Service Instructor 1041-I-II: Field Evaluation

Fire Service Instructor: Train-The-Trainer

Fire Service Instructor 1041-I: Distant Learning

Fire Service Instructor 1041-II: Distant Learning

Fires In Single Family Dwellings: Tactics And Strategy Module I

How To Develop And Assist In Fire Fighter Physical Fitness Programs

Interior Structural Fire Attack And Rescue

Mississippi County Fire Investigator

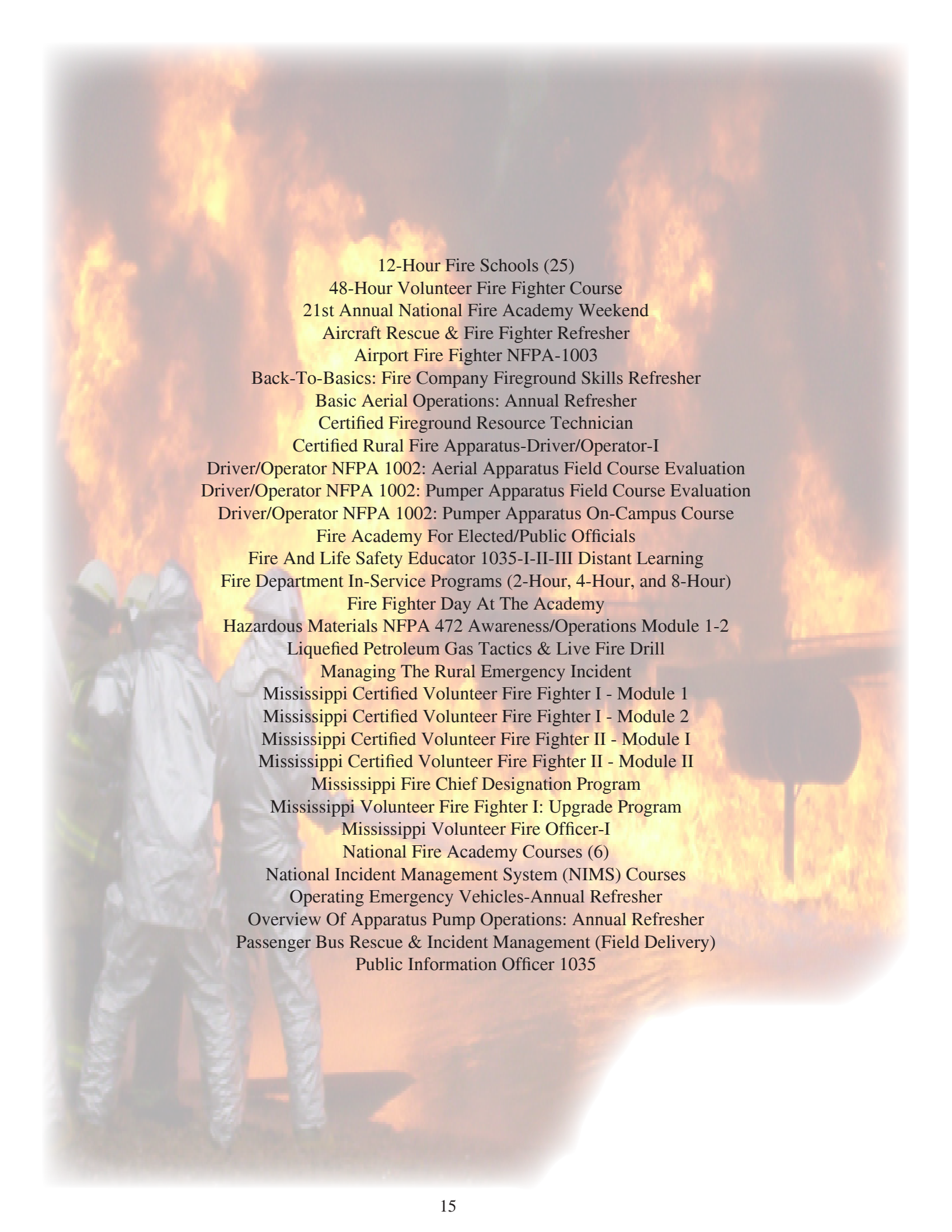
Mississippi County Fire Investigator: Annual-In-Service

Mississippi Executive Fire Officer Program/Fire Officer 1021-III-IV



EXTENSION SERVICES BUREAU

- Most courses are designed to be presented to the volunteer fire fighter.
- Utilizes a cadre' of associates to present training programs across the state.
- Administers the National Fire Protection Association (NFPA) 1002 Driver/Operator and National Fire Protection Association (NFPA) 1003 Airport Fire Fighter which hold International Fire Service Accreditation Congress (IFSAC) and National Board on Fire Service Professional Qualifications (PROBOARD) Accreditation.
- Liaison between the Mississippi State Fire Academy and the National Fire Academy.



12-Hour Fire Schools (25)
48-Hour Volunteer Fire Fighter Course
21st Annual National Fire Academy Weekend
Aircraft Rescue & Fire Fighter Refresher
Airport Fire Fighter NFPA-1003
Back-To-Basics: Fire Company Fireground Skills Refresher
Basic Aerial Operations: Annual Refresher
Certified Fireground Resource Technician
Certified Rural Fire Apparatus-Driver/Operator-I
Driver/Operator NFPA 1002: Aerial Apparatus Field Course Evaluation
Driver/Operator NFPA 1002: Pumper Apparatus Field Course Evaluation
Driver/Operator NFPA 1002: Pumper Apparatus On-Campus Course
Fire Academy For Elected/Public Officials
Fire And Life Safety Educator 1035-I-II-III Distant Learning
Fire Department In-Service Programs (2-Hour, 4-Hour, and 8-Hour)
Fire Fighter Day At The Academy
Hazardous Materials NFPA 472 Awareness/Operations Module 1-2
Liquefied Petroleum Gas Tactics & Live Fire Drill
Managing The Rural Emergency Incident
Mississippi Certified Volunteer Fire Fighter I - Module 1
Mississippi Certified Volunteer Fire Fighter I - Module 2
Mississippi Certified Volunteer Fire Fighter II - Module I
Mississippi Certified Volunteer Fire Fighter II - Module II
Mississippi Fire Chief Designation Program
Mississippi Volunteer Fire Fighter I: Upgrade Program
Mississippi Volunteer Fire Officer-I
National Fire Academy Courses (6)
National Incident Management System (NIMS) Courses
Operating Emergency Vehicles-Annual Refresher
Overview Of Apparatus Pump Operations: Annual Refresher
Passenger Bus Rescue & Incident Management (Field Delivery)
Public Information Officer 1035



SPECIAL/INDUSTRIAL SERVICES BUREAU

- Programs are generally formatted around the subject of industrial incipient firefighting, technical rescue, and hazardous materials response.
- Most courses have obtained International Fire Service Accreditation Congress (IFSAC) and National Board on Fire Service Professional Qualifications (PROBOARD) designation.
- Most special course student fees are supported with Federal grant funds.
- Specializes in special technical programs geared towards fire department training.
- Program delivery consists of on-campus and on-site programs.



Certified Advanced Rescue Specialist (CARS)

Confined Space Rescue

Confined Space Rescue: Modules 1-4

Emergency Response To Terrorism: Basic Concepts

Fire Service Management-101

Firefighter Intervention Rescue Survival Techniques (FIRST)

Fireground Leadership

Hazardous Materials Awareness And Operations

Hazardous Materials Technician Field Training

Hazardous Materials Technician-I

Hazardous Materials Technician-II

Incipient And Structural Fire Brigade Training Programs: Modules I-V

Industrial Fire Fighter Refresher Training

Industrial On-Site Training Programs

NFA Chemistry Of Hazardous Materials: Fire Chem I

Rescue Refresher

Rope Rescue I: Modules 1-4

Rope Rescue Technician-I

Rope Rescue Technician-II

Smoke Diver

Trench Rescue & Emergency Shoring



OTHER EXTENSION SERVICES

- **Scott SCBA Technician Training - Specialist Level (Module I)**
- **Scott SCBA Technician Training - Airpack Fifty Technician (Module II)**
- **Scott SCBA Technician Training - NXG2 (Module III)**
- **Hale Fire Pump Rebuilding Class**

MISSISSIPPI STATE FIRE ACADEMY TOURS



AGE APPROPRIATE PRESENTATIONS
FOR ALL SIZE GROUPS



FIRE SAFETY EDUCATION & CAREER DEVELOPMENT





Associate Instructor Affiliations Fiscal Year 2011

The Academy contracted with the following individuals for course deliveries during the fiscal year.

Glenn Babb	James Littlejohn
Matt Bailey	Tommy Malone
Jonathan Blakenship	Jeffrey Mattison
Edwin Blue	James McCullar
Justin Bouler	Stephen Moore
Byran Brown	Craig Nash
James Bryant	Mark Nixon
James Bunyard	Daniel Owens
Robert Bush	Robert Parker
David Campbell	Bobby Poe
David Chance	John Pope III
Pierce Clark	Danny Prather
Michelle Crowley	John Riggs
Byran Cunningham	Michael Rutherford
Michael Devore	Kerry Scott
Mike Doss	Jason Sheldon
Lyman Fite	Herman Simpson
Kendall Golden	Jeffrey Sims
John Grimes	Darryl Smith
Robert Hinkle	Joseph Stapleton
Kenneth Holbrook	Steven Thomas
Charlene Holliman	Lisa Valadie
Cowles Horton	Karl VanHorn
Jerry Johnson	Terry Wages
Terry Johnson	Gregory Ward
Kris Koziol	Tommy Wardlaw
Tom Lariviere	Chris Watkins
Derrick Layton	Michael Watts
Ricky Leister	Charles Yarbrough



Organizational Affiliations

Much of the development and improvement of a successful training program comes as the direct result of dialogue established with other persons in the business. The members of the State Fire Academy staff are affiliated with many related organizations and thus have opportunities to share ideas. Following is a list of organizations staff members are involved in.

- ARFF (Aircraft Rescue and Fire Fighting) Working Group
- International Association of Arson Investigators
- International Association of Fire Chiefs
- International Code Council
- International Fire Service Accreditation Congress (IFSAC)
- Mississippi Administrative Assistants Association
- Mississippi Association of Governmental Purchasing and Property Agents
- Mississippi Association of Personnel Administrators
- Mississippi Association of Public Fire Safety Educators
- Mississippi Chapter of International Association of Arson Investigators
- Mississippi Fire Chiefs Association
- Mississippi Fire Fighters Association
- Mississippi Fire Service Instructors Association
- Mississippi Society of Certified Public Managers
- National Association of Fire Investigators
- National Fire Protection Association
- North American Fire Training Directors Association
- The ProBoard (National Professional Qualifications Board)



2011 PARTICIPATION REPORT BY TYPE OF PROGRAM

Certification Services Bureau

Course Name	Student Count
CPAT EXAM	220
CPAT ORIENTATION	1
EMERGENCY MEDICAL CARE	3
EMERGENCY MEDICAL CARE TRAIN-THE-TRAINER	3
FIRE DEPARTMENT SAFETY OFFICER 1521	48
FIRE DEPARTMENT SAFETY OFFICER STATE CERTIFICATE	10
FIRE FIGHTER 1001-I-II	183
FIRE FIGHTER REFRESHER	4
FIRE INSPECTOR 1031-1	30
FIRE INSPECTOR 1031-II	20
FIRE INVESTIGATOR 1033	44
FIRE OFFICER 1021-I-II	50
FIRE OFFICER I & II STATE CERTIFIED	31
FIRE SERVICE INSTRUCTOR 1041-I	49
FIRE SERVICE INSTRUCTOR 1041-II	6
FIRE SERVICE INSTRUCTOR 1041-III	8
FIRE SERVICE INSTRUCTOR 1041-I-II	108
FIRE SERVICE INSTRUCTOR: TRAIN-THE-TRAINER	5
FIRES IN SINGLE FAMILY DWELLINGS: TACTICS & STRATEGY	14
HAZARDOUS MATERIALS NFPA 472 AWARENESS /OPERATIONS (40 HRS)	85
HAZARDOUS MATERIALS FOR FIRST RESPONDERS - NFPA 472 (32 HRS)	91
HOW TO DEVELOP/ASSIST IN FF PHYSICAL FITNESS PROGRAMS	10
INTERIOR STRUCTURAL FIRE ATTACK AND RESCUE	17
MISSISSIPPI COUNTY FIRE INVESTIGATOR	4
MISSISSIPPI COUNTY FIRE INVESTIGATOR: ANNUAL IN-SERVICE	66
MISSISSIPPI EXECUTIVE FIRE OFFICER 1021-III-IV	15
VEHICLE ARSON TRAINING BY GEICO INSURANCE	116



2011 PARTICIPATION REPORT BY TYPE OF PROGRAM

Extension Services Bureau

Course Name	Student Count
10 COMMANDMENTS OF EFFECTIVE & SAFE FIREGROUND MANAGEMENT	24
2 IN - 2 OUT	80
2010 TRAINING CHIEFS/OFFICERS CONFERENCE	52
48 HOUR VOLUNTEER FIRE FIGHTER-MODULE 1	88
48 HOUR VOLUNTEER FIRE FIGHTER-MODULE 2	44
AIRCRAFT RESCUE FIRE FIGHTER REFRESHER TRAINING (3, 6, 8, & 24 HRS)	284
AIRPORT FIRE FIGHTER	55
AND THE BEAT GOES ON	62
ARSON DETECTION FOR FIRST RESPONDERS	56
AUTOMOBILE EXTRICATION	323
BASIC FIRE COMPANY FIREGROUND SKILLS REFRESHER	50
BASIC RESCUE OPERATIONS	14
CALLING THE MAYDAY I	574
CALLING THE MAYDAY II	517
CALLING THE MAYDAY TRAIN THE TRAINER	44
CAREER LONG CHANGE	40
CERTIFIED FIREGROUND RESOURCE TECHNICIAN	4
CERTIFIED RURAL FIRE APPARATUS - DRIVER/OPERATOR- I	93
COMMUNICATION: REMOVING BARRIERS, GENDERS/GENERATIONS	52
COMMUNITY EMERGENCY RESPONSE TEAM	52
COURTROOM PREPARATION AND TESTIMONY FOR FIRST RESPONDER	20
DEALING WITH MEDIA/PRESS RELEASE	52
DISASTER DOCUMENTATION	52
DRIVER/OPERATOR NFPA 1002: AERIAL APPARATUS	29
DRIVER/OPERATOR NFPA 1002: PUMPER APPARATUS	168
EFFECTIVE WRITING/COMMUNICATION SKILLS	52
ELECTRICAL HAZARDS ON THE EMERGENCY SCENE	42
EMPLOYMENT LAW NEWS (YOU CAN USE)	52
ENGINE COMPANY OPERATIONS - PART 1	168
ENGINE COMPANY OPERATIONS - PART 2	118
ETHICS IN PUBLIC EMPLOYMENT	52
EVERYDAY FIRE	73
EXECUTIVE SKILL SERIES: MANAGING & LEADING CHANGE	38
FIRE ACADEMY FOR ELECTED/PUBLIC OFFICIALS	30
FIRE AND LIFE SAFETY EDUCATOR-I	13
FIRE AND LIFE SAFETY EDUCATOR-I-II-III	6
FIRE FIGHTER DAY AT THE ACADEMY	101
FIRE FIGHTER ESSENTIAL SKILLS - I	151
FIRE FIGHTER ESSENTIAL SKILLS - II	72
FIRE FIGHTER ESSENTIAL SKILLS - III	111
FIRE FIGHTER SELF RESCUE	34
FIRE SERVICE RESCUE 101	20
FIREGROUND SUPPORT OPERATIONS	46



2011 PARTICIPATION REPORT BY TYPE OF PROGRAM

Extension Services Bureau (Cont.)

Course Name	Student Count
HALE PUMP	10
HAZARDOUS MATERIALS AWARENESS/OPERATIONS-MODULE 1	87
HAZARDOUS MATERIALS NFPA 472 AWARENESS/OPERATIONS-MODULE 2	66
HAZARDOUS MATERIALS: INITIAL RESPONSE	116
HIPPA - KEEPING INFORMATION CONFIDENTIAL	52
INCIDENT COMMAND FOR HIGHRISE OPERATIONS	32
INTRO TO STRUCTURAL FIRE ATTACK & RESCUE FOR 911 PERSONNEL	14
IS 100: INTRODUCTION TO ICS	21
IS 200: ICS FOR SINGLE RESOURCE AND INITIAL ACTIONS	20
JUVENILE FIRESETTER INTERVENTION SPECIALIST I	17
LEADERSHIP III: STRATEGIES FOR SUPERVISORY SUCCESS	9
LEADING CHANGE IN THE 911 PROFESSION	40
LP-GAS TACTICS & LIVE FIRE DRILL	490
MANAGING THE RURAL EMERGENCY INCIDENT	181
MICROSOFT & EXCEL BUDGET TRACK	52
MISSISSIPPI CERTIFIED VOLUNTEER FIRE FIGHTER I-MODULE 2	404
MISSISSIPPI CERTIFIED VOLUNTEER FIRE FIGHTER II-MODULE 2	160
MISSISSIPPI CERTIFIED VOLUNTEER FIRE FIGHTER II MODULE I	150
MISSISSIPPI CERTIFIED VOLUNTEER FIRE FIGHTER NFPA 1001 BASED	5
MISSISSIPPI FIRE FIGHTER SAFETY 2004	47
MISSISSIPPI VOLUNTEER FIRE FIGHTER 1-MODULE 1 CLASSROOM	721
MISSISSIPPI VOLUNTEER FIRE FIGHTER I UP-GRADE	462
MISSISSIPPI VOLUNTEER FIRE OFFICER-I	9
MS FIRE CHIEF/OFFICERS DESIGNATION PROGRAM	8
MS FIRE PREVENTION AND PUBLIC FIRE SAFETY EDUCATION	1147
NATIONAL INCIDENT MANAGEMENT SYSTEM-INTRODUCTION	9
NFPA 1403 CLASSROOM REQUIREMENTS	4
NIMS ICS 300 (INTERMEDIATE ICS)	319
NIMS ICS 400 (ADVANCED ICS)	269
NIMS ICS-800: NATIONAL RESPONSE PLAN-INTRODUCTION	7
NIMS COMMAND SYSTEM 300 & 400: FACILITATOR	9
NIMS INCIDENT COMMAND SYSTEM FOR THE FIRE SERVICE	52
NIMS: COMMUNICATIONS AND INFORMATION MANAGEMENT	83
NIMS: MULTIAGENCY COORDINATION SYSTEM (MACS)	64
NIMS: PUBLIC INFORMATION SYSTEMS	82
NIMS: RESOURCE MANAGEMENT	81
OPERATING EMERGENCY VEHICLES - ANNUAL REFRESHER	167
OVERVIEW OF APPARATUS PUMP OPERATIONS	19
OVERVIEW OF FIRE DEPARTMENT SUCCESSION PLANNING	11
PRINCIPLES OF AIRPORT FIRE FIGHTING	4
PRINCIPLES OF DRIVER/OPERATOR	6
PUBLIC INFORMATION OFFICER 1035	13
RAPID INTERVENTION TEAMS	66



2011 PARTICIPATION REPORT BY TYPE OF PROGRAM

Extension Services Bureau (Cont.)

Course Name	Student Count
RESPONDING TO FIRE/RESCUE INCIDENTS: 911 PERSONNEL	14
RESPONSE TO DRUG LABS, RADIATION, & PESTICIDE EMERGENCY	20
RESPONSE TO NEW VEHICLE FIRES	47
RURAL FIREFIGHTING: THE WATER SUPPLY CHALLENGE	31
STRATEGIES FOR FIRE FIGHTER PERSONAL SUCCESS	58
STRUCTURAL FIRE ATTACK	64
THE FIRE APPARATUS DRIVER	61
TRAINING, RESPONDING AND RETURNING HOME ALIVE	368
TRAINING, RESPONDING AND RETURNING HOME ALIVE: TRAIN-THE-TRAINER	2
UNDERSTANDING THE ROLE OF THE INCIDENT SAFETY OFFICER	73
VOLUNTEER FIRE FIGHTER I - MODULE 1 - 2ND ATTEMPT	46
VOLUNTEER FIRE FIGHTER INSTRUCTOR ORIENTATION	22



2011 PARTICIPATION REPORT BY TYPE OF PROGRAM

Industrial Services Bureau

Course Name	Student Count
CHLOREP ADVANCED TECHNIQUES	49
CHLORINE RESPONSE TRAINING	122
CONFINED SPACE RESCUE TECHNICIAN	13
FIRE & PUMP	7
HAZ MAT OPERATIONAL TRAINING	8
HAZ MAT TECHNICIAN TRAINING	8
INCIDENT COMMAND SYSTEM	27
INDUSTRIAL FIRE BRIGADE TRAINING	14
INDUSTRIAL REFRESHER FIRE FIGHTER TRAINING (4, 8, 16, 24, & 40 HRS)	534
INDUSTRIAL RESCUE REFRESHER (8, 16, & 24 HRS)	30
REFRESHER HAZ MAT TRAINING (8 & 24 HRS)	77
RESCUE REFRESHER	14
ROPE RESCUE I	6



2011 PARTICIPATION REPORT BY TYPE OF PROGRAM

Special Services Bureau

Course Name	Student Count
CERTIFIED ADVANCED RESCUE TECHNICIAN	22
CHEMISTRY OF HAZARDOUS MATERIALS: FIRE CHEM I	27
CHLORINE/COMMUNICATIONS WITH THE MEDIA (HAZ MAT MOD. 1)	66
CONFINED SPACE RESCUE MODULE 1	87
CONFINED SPACE RESCUE MODULE 2	83
CONFINED SPACE RESCUE MODULE 3	84
CONFINED SPACE RESCUE MODULE 4	83
CONFINED SPACE RESCUE TECHNICIAN	92
DECONTAMINATION/CHEMICAL PROTECTIVE CLOTHING (HAZ MAT MOD. 3)	65
FIRE SERVICE MANAGEMENT 101	21
FIREFIGHTER INTERVENTION RESCUE SURVIVAL TECHNIQUES	78
FIREGROUND LEADERSHIP	36
HAZARDOUS MATERIALS AWARENESS AND OPERATIONS (32 HR)	14
HAZARDOUS MATERIALS FOR FIRST RESPONDERS (20 HR)	67
HAZARDOUS MATERIALS TECHNICIAN (MODULE FORMAT)	65
HAZARDOUS MATERIALS TECHNICIAN - I	77
HAZARDOUS MATERIALS TECHNICIAN-II	28
NON-BULK CONTAINERS/HIGHWAY CARRIERS/RAIL CARS (HAZ MAT MOD. 5)	66
RESPONDING TO HAZARDOUS MATERIALS INCIDENTS (HAZ MAT MOD. 6)	65
ROPE RESCUE I - MODULE 1	157
ROPE RESCUE I - MODULE 2	155
ROPE RESCUE I - MODULE 3	150
ROPE RESCUE I - MODULE 4	150
ROPE RESCUE II	84
ROPE RESCUE REFRESHER	5
ROPE RESCUE TECHNICIAN - I	71
SMOKE DIVER	67
SOURCES OF ASSISTANCE/HAZ MAT ICS/CHEM. TERMS & DEFINITIONS (HAZ MAT MOD. 1)	65
TOXICOLOGY/MONITORING DEVICES/WEAPONS OF MASS DESTRUCTION (HAZ MAT MOD. 2)	65
TRENCH RESCUE AND EMERGENCY SHORING TECHNICIAN	77



2011 PARTICIPATION REPORT BY ORGANIZATION

Organization Name	Student Count
ABEL'S STORE VOLUNTEER FIRE DEPARTMENT	5
ABERDEEN FIRE DEPARTMENT	3
ACKERMAN FIRE DEPARTMENT	15
ADAMS COUNTY EMERGENCY MANAGEMENT	10
ADAMS COUNTY FIRE COORDINATOR	1
ADAMS COUNTY SHERIFF'S DEPARTMENT	1
ADATON/SELF CREEK FIRE DEPARTMENT	10
AGRICOLA VOLUNTEER FIRE DEPARTMENT	2
ALAMUCHA VOLUNTEER FIRE DEPARTMENT	4
ALCORN COUNTY FIRE COORDINATOR	1
ALCORN COUNTY SHERIFF'S DEPARTMENT	2
ALGOMA VOLUNTEER FIRE DEPARTMENT	5
ALLEN VOLUNTEER FIRE DEPARTMENT	26
ALPHABA/COCKRUM/INGRAMS FIRE DEPARTMENT	14
ALPINE VOLUNTEER FIRE DEPARTMENT	18
ALTITUDE VOLUNTEER FIRE DEPARTMENT	6
AMITE COUNTY SHERIFF'S DEPARTMENT	3
AMORY FIRE DEPARTMENT	12
ANGUILLA VOLUNTEER FIRE DEPARTMENT	1
ARCOLA VOLUNTEER FIRE DEPARTMENT	10
ARKEMA	3
ARLINGTON VOLUNTEER FIRE DEPARTMENT/NESHOPA COUNTY	4
ARLINGTON VOLUNTEER FIRE DEPARTMENT/PERRY COUNTY	1
ARM VOLUNTEER FIRE DEPARTMENT	6
ASHLAND VOLUNTEER FIRE DEPARTMENT	17
ATTALA COUNTY BEAT 2/MCCOOL FIRE DEPARTMENT	2
ATTALA COUNTY CENTRAL FIRE DEPARTMENT	44
ATTALA COUNTY CIVIL DEFENSE	3
ATTALA COUNTY EMS	4
ATTALA COUNTY FRIENDSHIP VOLUNTEER FIRE DEPARTMENT	8
BAILEY VOLUNTEER FIRE DEPARTMENT	9
BALDWIN VOLUNTEER FIRE DEPARTMENT	5
BALTIMORE CITY FIRE DEPARTMENT	1
BANNER VOLUNTEER FIRE DEPARTMENT/CALHOUN COUNTY	9
BARLOW VOLUNTEER FIRE DEPARTMENT	1
BARNES VOLUNTEER FIRE DEPARTMENT	10
BARTON VOLUNTEER FIRE DEPARTMENT/MARSHALL COUNTY	10
BASIN VOLUNTEER FIRE DEPARTMENT	10
BASSFIELD VOLUNTEER FIRE DEPARTMENT	8
BATESVILLE FIRE DEPARTMENT	93
BAY COUNTY FLORIDA FIRE SERVICES	1
BAY SPRINGS VOLUNTEER FIRE DEPARTMENT	11
BAY ST. LOUIS FIRE DEPARTMENT	94



2011 PARTICIPATION REPORT BY ORGANIZATION (Cont.)

Organization Name	Student Count
BEAUMONT VOLUNTEER FIRE DEPARTMENT	2
BEAVER LAKE VOLUNTEER FIRE DEPARTMENT	10
BEAVER MEADOWS VOLUNTEER FIRE DEPARTMENT	6
BEAVERDAM VOLUNTEER FIRE DEPARTMENT	13
BELDEN VOLUNTEER FIRE DEPARTMENT	7
BELL SCHOOL HOUSE FIRE DEPARTMENT	6
BELMONT FIRE DEPARTMENT	11
BELZONI FIRE DEPARTMENT	25
BENNDALE VOLUNTEER FIRE DEPARTMENT	5
BENTON COUNTY SHERIFF'S DEPARTMENT	1
BENTON VOLUNTEER FIRE DEPARTMENT	20
BENTONIA VOLUNTEER FIRE DEPARTMENT	54
BETHEDEN VOLUNTEER FIRE DEPARTMENT	29
BETHEL VOLUNTEER FIRE DEPARTMENT	5
BEULAH HUBBARD VOLUNTEER FIRE DEPARTMENT/NEWTON CO.	6
BEXLEY VOLUNTEER FIRE DEPARTMENT	1
BIG CREEK VOLUNTEER FIRE DEPARTMENT	3
BIG LEVEL VOLUNTEER FIRE DEPARTMENT	22
BIGGERSVILLE VOLUNTEER FIRE DEPARTMENT	5
BILOXI FIRE DEPARTMENT	181
BLACKHAWK VOLUNTEER FIRE DEPARTMENT	4
BLACKLAND VOLUNTEER FIRE DEPARTMENT	6
BLYTHEVILLE FIRE DEPARTMENT	18
BOGGY VOLUNTEER FIRE DEPARTMENT	8
BOLIVAR COUNTY FIRE DEPARTMENT	18
BOLIVAR COUNTY SHERIFF'S DEPARTMENT	1
BOLTON VOLUNTEER FIRE DEPARTMENT	4
BOONEVILLE FIRE DEPARTMENT	97
BOUNDS VOLUNTEER FIRE DEPARTMENT	2
BOVINA VOLUNTEER FIRE DEPARTMENT	19
BRANDON FIRE DEPARTMENT	104
BRANDON POLICE DEPARTMENT	27
BRAXTON VOLUNTEER FIRE DEPARTMENT	3
BRIDGETOWN VOLUNTEER FIRE DEPARTMENT	2
BROOKHAVEN FIRE DEPARTMENT	12
BROOKLYN VOLUNTEER FIRE DEPARTMENT	12
BROOKSVILLE VOLUNTEER FIRE DEPARTMENT	8
BROWNSVILLE VOLUNTEER FIRE DEPARTMENT	4
BRUCE VOLUNTEER FIRE DEPARTMENT	35
BUDE VOLUNTEER FIRE DEPARTMENT	10
BURNSVILLE VOLUNTEER FIRE DEPARTMENT	1
BYHALIA VOLUNTEER FIRE DEPARTMENT	12
BYNUM VOLUNTEER FIRE DEPARTMENT	20



2011 PARTICIPATION REPORT BY ORGANIZATION (Cont.)

Organization Name	Student Count
BYRAM VOLUNTEER FIRE DEPARTMENT	15
BYWY VOLUNTEER FIRE DEPARTMENT/CHOCTAW COUNTY	24
CAIRO VOLUNTEER FIRE DEPARTMENT	2
CALEDONIA FIRE DEPARTMENT/LOWNDES COUNTY DISTRICT 1	7
CALHOUN CITY VOLUNTEER FIRE DEPARTMENT	32
CALHOUN COUNTY SHERIFF'S DEPARTMENT	1
CALHOUN VOLUNTEER FIRE DEPARTMENT	16
CAMDEN FIRE & RESCUE	5
CAMP SHELBY-MS MILITARY FIRE DEPARTMENT	1
CANNONSBURG/CHURCH HILL VOLUNTEER FIRE DEPARTMENT	6
CANTON FIRE DEPARTMENT	72
CARMICHAEL VOLUNTEER FIRE DEPARTMENT	5
CARNES VOLUNTEER FIRE DEPARTMENT	41
CARRIERE VOLUNTEER FIRE DEPARTMENT	15
CARROLL COUNTY BEAT 4 VOLUNTEER FIRE DEPARTMENT	1
CARROLL COUNTY SHERIFF'S DEPARTMENT	1
CARTER'S BRANCH FIRE DEPARTMENT	5
CARTHAGE FIRE DEPARTMENT	19
CARY VOLUNTEER FIRE DEPARTMENT	4
CASON VOLUNTEER FIRE DEPARTMENT	8
CATO VOLUNTEER FIRE DEPARTMENT	2
CAYCE VOLUNTEER FIRE DEPARTMENT	15
CEDAR CREEK VOLUNTEER FIRE DEPARTMENT	46
CEDAR HILL FIRE DEPARTMENT	2
CENTER RIDGE VOLUNTEER FIRE DEPARTMENT	9
CENTER VOLUNTEER FIRE DEPARTMENT/UNION CITY	22
CENTRAL GEORGE COUNTY VOLUNTEER FIRE DEPARTMENT	5
CENTRAL JASPER COUNTY VOLUNTEER FIRE DEPARTMENT	8
CENTRAL LAMAR COUNTY FIRE DEPARTMENT	4
CENTRAL MS CORRECTIONAL FACILITY	5
CENTRAL OKTIBBEHA /LONGVIEW FIRE DEPARTMENT	20
CHAULK BLUFF VOLUNTEER FIRE DEPARTMENT	4
CHARLESTON VOLUNTEER FIRE DEPARTMENT	23
CHATTANOOGA FIRE DEPARTMENT	12
CHEVRON U.S.A., INC.	1
CHICKEN BONE FIRE DEPARTMENT	5
CHLORINE INSTITUTE	144
CHOCTAW COUNTY FIRE COORDINATOR	2
CHOCTAW COUNTY SHERIFF'S DEPARTMENT	1
CHOCTAW FIRE DEPARTMENT	21
CHUNKY VOLUNTEER FIRE DEPARTMENT	8
CLAIBORNE COUNTY FIRE DEPARTMENT	33
CLARKDALE VOLUNTEER FIRE DEPARTMENT	9



2011 PARTICIPATION REPORT BY ORGANIZATION (Cont.)

Organization Name	Student Count
CLARKSDALE FIRE DEPARTMENT	2
CLEAR SPRINGS VOLUNTEER FIRE DEPARTMENT	1
CLEARY VOLUNTEER FIRE DEPARTMENT	2
CLEM VOLUNTEER FIRE DEPARTMENT	2
CLERMONT HARBOR VOLUNTEER FIRE DEPARTMENT	18
CLEVELAND FIRE DEPARTMENT	113
CLEVELAND UNIT FIRE DEPARTMENT/BOLIVAR COUNTY	21
CLINTON FIRE DEPARTMENT	27
COAHOMA COUNTY FIRE DEPARTMENT	19
COAHOMA COUNTY SHERIFF'S DEPARTMENT	2
COFFEEVILLE VOLUNTEER FIRE DEPARTMENT	1
COLDWATER VOLUNTEER FIRE DEPARTMENT	5
COLES POINT VOLUNTEER FIRE DEPARTMENT	5
COLLINS FIRE DEPARTMENT	24
COLLINSVILLE VOLUNTEER FIRE DEPARTMENT	4
COLUMBIA FIRE DEPARTMENT	21
COLUMBUS FIRE DEPARTMENT	70
CONEHATTA VOLUNTEER FIRE DEPARTMENT	2
COPIAH COUNTY EMERGENCY MANAGEMENT	1
CORINTH FIRE DEPARTMENT	57
COURTLAND VOLUNTEER FIRE DEPARTMENT	2
CRAFCO, INC.	3
CRENSHAW VOLUNTEER FIRE DEPARTMENT	4
CROWDER VOLUNTEER FIRE DEPARTMENT	5
CRYSTAL SPRINGS FIRE DEPARTMENT	2
CULKIN VOLUNTEER FIRE DEPARTMENT	37
DAMASCUS VOLUNTEER FIRE DEPARTMENT	24
DECATUR VOLUNTEER FIRE DEPARTMENT	1
DEKALB VOLUNTEER FIRE DEPARTMENT	6
DENNIS VOLUNTEER FIRE DEPARTMENT	3
DENTVILLE VOLUNTEER FIRE DEPARTMENT	2
DEPARTMENT OF INSURANCE	1
DEPARTMENT OF PUBLIC SAFETY	8
DERBY-WHITESANDS VOLUNTEER FIRE DEPARTMENT	5
DERMA VOLUNTEER FIRE DEPARTMENT	16
DESOTO COUNTY SHERIFF'S DEPARTMENT	8
DESOTO COUNTY EMERGENCY SERVICES	2
DESOTO VOLUNTEER FIRE DEPARTMENT/CLARKE COUNTY	3
DIAMONDHEAD FIRE DEPARTMENT	31
D'IBERVILLE FIRE DEPARTMENT	80
DIXIE VOLUNTEER FIRE DEPARTMENT	24
DIXON VOLUNTEER FIRE DEPARTMENT	14
DORSEY / FRIENDSHIP FIRE DEPARTMENT	12



2011 PARTICIPATION REPORT BY ORGANIZATION (Cont.)

Organization Name	Student Count
DOTHAN REGIONAL AIRPORT FIRE DEPARTMENT	7
DREW VOLUNTEER FIRE DEPARTMENT	36
DRY CREEK VOLUNTEER FIRE DEPARTMENT	1
DUCK HILL VOLUNTEER FIRE DEPARTMENT	30
DUFFEE VOLUNTEER FIRE DEPARTMENT	8
DUMAS VOLUNTEER FIRE DEPARTMENT	8
DUNCAN FIRE DEPARTMENT/BOLIVAR COUNTY DISTRICT 2	2
DUPONT HUMAN SERVICES-BELLE PLANT	1
DUPONT SPECIALTY CHEMICALS	162
DURANT VOLUNTEER FIRE DEPARTMENT	5
E. CENTRAL VOLUNTEER FIRE DEPARTMENT	29
E. HARRISON VOLUNTEER FIRE DEPARTMENT	1
E. LINCOLN VOLUNTEER FIRE DEPARTMENT	8
E. NESHOPA VOLUNTEER FIRE DEPARTMENT	1
E. OKTIBBEHA COUNTY FIRE DEPARTMENT	35
E. UNION VOLUNTEER FIRE DEPARTMENT	12
E. WINSTON COUNTY VOLUNTEER FIRE DEPARTMENT	7
EASTPORT/MILLCREEK FIRE DEPARTMENT	9
ECRU VOLUNTEER FIRE DEPARTMENT	15
EDEN VOLUNTEER FIRE DEPARTMENT	13
EDINBURG VOLUNTEER FIRE DEPARTMENT	1
EKA CHEMICALS, INC.	21
ELLIOTT VOLUNTEER FIRE DEPARTMENT	33
ELLISVILLE FIRE DEPARTMENT	7
ENID VOLUNTEER FIRE DEPARTMENT	2
ENON VOLUNTEER FIRE DEPARTMENT	9
ENTERPRISE VOLUNTEER FIRE DEPARTMENT	2
ERGON REFINING, INC.	89
ESCATAWPA VOLUNTEER FIRE DEPARTMENT	6
ETHEL VOLUNTEER FIRE DEPARTMENT	2
EUDORA VOLUNTEER FIRE DEPARTMENT	73
EUPORA VOLUNTEER FIRE DEPARTMENT	1
EVERGREEN FIRE PROTECTION DIST	17
EVERGREEN/-CAROLINA VOLUNTEER FIRE DEPARTMENT	12
EXXON-BATON ROUGE REFINERY	34
EXXONMOBIL-BTEC	7
FAIRHAVEN VOLUNTEER FIRE DEPARTMENT	28
FAIRVIEW VOLUNTEER FIRE DEPARTMENT	7
FALKNER VOLUNTEER FIRE DEPARTMENT	20
FARMHAVEN VOLUNTEER FIRE DEPARTMENT	15
FARMINGTON VOLUNTEER FIRE DEPARTMENT	6
FAYETTE VOLUNTEER FIRE DEPARTMENT	4
FEDERAL AVIATION ADMINISTRATION-SOUTHERN	8



2011 PARTICIPATION REPORT BY ORGANIZATION (Cont.)

Organization Name	Student Count
FELLOWSHIP VOLUNTEER FIRE DEPARTMENT	11
FERNWOOD VOLUNTEER FIRE DEPARTMENT	20
FIREFOX/HINDS COUNTY PENAL FARM	69
FIRST CHEMICAL CORPORATION	50
FISHER FERRY VOLUNTEER FIRE DEPARTMENT	21
FLORA FIRE DEPARTMENT	20
FLORENCE VOLUNTEER FIRE DEPARTMENT	13
FLORENCE-CITY OF	9
FLOWOOD FIRE DEPARTMENT	269
FLOWOOD POLICE DEPARTMENT	9
FONTAINEBLEAU VOLUNTEER FIRE DEPARTMENT	21
FOREST FIRE DEPARTMENT	2
FORREST COUNTY SHERIFF'S DEPARTMENT	1
FORT BAYOU VOLUNTEER FIRE DEPARTMENT	47
FORT POLK FIRE & EMERGENCY SERVICE	2
FORTS LAKE/FRANKLIN CREEK VOLUNTEER FIRE DEPARTMENT	23
FOSTER MOUND VOLUNTEER FIRE DEPARTMENT	11
FOXWORTH VOLUNTEER FIRE DEPARTMENT	28
FRANKLIN COUNTY DISTRICT 5 / VOLUNTEER FIRE DEPARTMENT	13
FRANKLIN COUNTY SHERIFF'S DEPARTMENT	1
FRENCH CAMP VOLUNTEER FIRE DEPARTMENT	7
FRIENDSHIP VOLUNTEER FIRE DEPARTMENT	6
FULTON FIRE DEPARTMENT	10
FURRS VOLUNTEER FIRE DEPARTMENT	3
GAUTIER FIRE DEPARTMENT	60
GAUTIER POLICE DEPARTMENT	6
GEESLIN CORNER VOLUNTEER FIRE DEPARTMENT	4
GEORGE COUNTY EMERGENCY MANAGEMENT	2
GEORGE COUNTY SHERIFF'S DEPARTMENT	2
GEORGETOWN VOLUNTEER FIRE DEPARTMENT	3
GEORGIA GULF	48
GEORGIA PACIFIC LEAF RIVER CELLULOSE FIRE DEPARTMENT	14
GLADE VOLUNTEER FIRE DEPARTMENT	17
GLEN VOLUNTEER FIRE DEPARTMENT	8
GLUCKSTADT FIRE PROTECTION DISTRICT	42
GOLDEN TRIANGLE REGIONAL AIRPORT/BAPTIST MEMORIAL	7
GOLDEN VOLUNTEER FIRE DEPARTMENT	5
GOOD HOPE VOLUNTEER FIRE DEPARTMENT	4
GOODMAN VOLUNTEER FIRE DEPARTMENT	2
GORE SPRINGS VOLUNTEER FIRE DEPARTMENT	41
GRACE VOLUNTEER FIRE DEPARTMENT	2
GRANBY VOLUNTEER FIRE DEPARTMENT	1
GRAND CASINO	1



2011 PARTICIPATION REPORT BY ORGANIZATION (Cont.)

Organization Name	Student Count
GRAND GULF NUCLEAR STATION	92
GRAVEL HILL VOLUNTEER FIRE DEPARTMENT	12
GRAVESTOWN VOLUNTEER FIRE DEPARTMENT	5
GREENE COUNTY CIVIL DEFENSE	1
GREENE COUNTY SHERIFF'S DEPARTMENT	1
GREENFIELD FIRE DEPARTMENT	1
GREENVILLE FIRE DEPARTMENT	109
GREENWOOD FIRE DEPARTMENT	283
GRENADA COUNTY CIVIL DEFENSE	2
GRENADA COUNTY SHERIFF'S DEPARTMENT	7
GRENADA FIRE DEPARTMENT	109
GRENADA POLICE DEPARTMENT	16
GULF PARK ESTATES/ST. ANDREWS FIRE DIST	17
GULFPORT-CITY OF	2
GULFPORT FIRE DEPARTMENT	38
GUNTOWN VOLUNTEER FIRE DEPARTMENT	2
H.A.L. VOLUNTEER FIRE DEPARTMENT	1
HAMILTON VOLUNTEER FIRE DEPARTMENT/MONROE CTY	15
HANCOCK COUNTY EMERGENCY MANAGEMENT	11
HARRISON COUNTY CIVIL DEFENSE	16
HARRISON COUNTY FIRE SERVICE	48
HARRISON COUNTY SHERIFF'S DEPARTMENT	1
HATLEY VOLUNTEER FIRE DEPARTMENT	42
HATTIESBURG FIRE DEPARTMENT	88
HATTIESBURG/LAUREL REGIONAL AIRPORT	4
HAZLEHURST FIRE DEPARTMENT	12
HAZLEHURST VOLUNTEER FIRE DEPARTMENT	2
HEBRON VOLUNTEER FIRE DEPARTMENT	1
HEIDELBERG VOLUNTEER FIRE DEPARTMENT	11
HERNANDO FIRE DEPARTMENT	7
HERNANDO POLICE DEPARTMENT	2
HEUCKS RETREAT VOLUNTEER FIRE DEPARTMENT	3
HICKORY FLAT VOLUNTEER FIRE DEPARTMENT	17
HICKORY GROVE VOLUNTEER FIRE DEPARTMENT/LAMAR COUNTY	8
HICKORY VOLUNTEER FIRE DEPARTMENT/NEWTON COUNTY	5
HIGH POINT VOLUNTEER FIRE DEPARTMENT	2
HILLSBORO VOLUNTEER FIRE DEPARTMENT	4
HINDS COUNTY EMERGENCY MANAGEMENT	20
HINDS COUNTY SHERIFF'S DEPARTMENT	8
HIWANNEE VOLUNTEER FIRE DEPARTMENT/WAYNE COUNTY	3
HOBO-BIG V VOLUNTEER FIRE DEPARTMENT	1
HOG CHAIN VOLUNTEER FIRE DEPARTMENT	5
HOLLANDALE POLICE DEPARTMENT	4



2011 PARTICIPATION REPORT BY ORGANIZATION (Cont.)

Organization Name	Student Count
HOLLANDALE VOLUNTEER FIRE DEPARTMENT	19
HOLLY BLUFF VOLUNTEER FIRE DEPARTMENT	20
HOLLY SPRINGS FIRE DEPARTMENT	98
HOLMES COMMUNITY COLLEGE	14
HOLMES COUNTY FIRE COORDINATOR	2
HOLMES COUNTY SHERIFF'S DEPARTMENT	1
HOLMES COUNTY E-911	5
HOLTSPUR VOLUNTEER FIRE DEPARTMENT	25
HOPE VOLUNTEER FIRE DEPARTMENT	6
HOPEWELL VOLUNTEER FIRE DEPARTMENT/COPIAH CTY	10
HORN LAKE FIRE DEPARTMENT	74
HOT COFFEE VOLUNTEER FIRE DEPARTMENT	2
HOULKA VOLUNTEER FIRE DEPARTMENT	15
HOUSTON FIRE DEPARTMENT	36
HOWELL VOLUNTEER FIRE DEPARTMENT	4
HUMPHREYS COUNTY SHERIFF'S DEPARTMENT	1
HUNTSVILLE AIRPORT	21
HURRICANE VOLUNTEER FIRE DEPARTMENT	13
HIGHWAY 84 WEST VOLUNTEER FIRE DEPARTMENT	1
HYDROVAC INDUSTRIAL SERVICES	3
INDEPENDENCE VOLUNTEER FIRE DEPARTMENT	1
INDIAN MOUND VOLUNTEER FIRE DEPARTMENT	1
INDIANOLA FIRE DEPARTMENT	69
INDUSTRIAL DEPARTMENTS	8
INDUSTRIAL EMERGENCY SERVICES	21
INGOMAR VOLUNTEER FIRE DEPARTMENT	20
INGRAM VOLUNTEER FIRE DEPARTMENT	7
INTERNATIONAL PAPER COMPANY-VICKSBURG	20
INVERNESS VOLUNTEER FIRE DEPARTMENT	16
ISOLA VOLUNTEER FIRE DEPARTMENT	2
ISSAQUENA COUNTY SHERIFF'S DEPARTMENT	1
ITAWAMBA COUNTY SHERIFF'S DEPARTMENT	2
ITTA BENA POLICE DEPARTMENT	1
ITTA BENA VOLUNTEER FIRE DEPARTMENT	29
IUKA FIRE DEPARTMENT	36
JACKSON COUNTY EMA	3
JACKSON COUNTY FIRE DISTRICT	50
JACKSON COUNTY SHERIFF'S DEPARTMENT	7
JACKSON FIRE DEPARTMENT	334
JACKSON POLICE DEPARTMENT	13
JACKSON-CITY OF-MAYOR'S OFFICE	36
JACKSON-CITY OF-PUBLIC SAFETY DISPATCH	5
JACKSON-CITY OF-PUBLIC WORKS	9



2011 PARTICIPATION REPORT BY ORGANIZATION (Cont.)

Organization Name	Student Count
JANICE VOLUNTEER FIRE DEPARTMENT	10
JASPER COUNTY SHERIFF'S DEPARTMENT	1
JEFF DAVIS COUNTY SHERIFF'S DEPARTMENT	1
JEFFERSON DAVIS COUNTY FIRE COORDINATOR	2
JOHNSON VOLUNTEER FIRE DEPARTMENT	1
JONATHAN VOLUNTEER FIRE DEPARTMENT	1
JONES COUNTY FIRE TRAINING OFFICER	2
JUMPERTOWN VOLUNTEER FIRE DEPARTMENT	2
KEARNEY PARK VOLUNTEER FIRE DEPARTMENT	8
KEESLER AFB/403RD CIVIL ENGINEER SQUAD	2
KEMPER COUNTY DISTRICT 3 VOLUNTEER FIRE DEPARTMENT	5
KEMPER COUNTY FIRE COORDINATOR	5
KEMPER COUNTY SHERIFF'S DEPARTMENT	1
KEMPER SPRINGS VOLUNTEER FIRE DEPARTMENT	13
KENOSHA WISCONSIN FIRE DEPARTMENT	1
KILMICHAEL VOLUNTEER FIRE DEPARTMENT	3
KILN VOLUNTEER FIRE DEPARTMENT	1
KINGSTON VOLUNTEER FIRE DEPARTMENT	2
KOSCIUSKO FIRE DEPARTMENT	6
KOSSUTH VOLUNTEER FIRE DEPARTMENT	5
LAFAYETTE COUNTY CIVIL DEFENSE	2
LAFAYETTE COUNTY FIRE DEPARTMENT	174
LAFAYETTE COUNTY SHERIFF'S DEPARTMENT	1
LAKE EDDINS VOLUNTEER FIRE DEPARTMENT	13
LAKE HARBOR VOLUNTEER FIRE DEPARTMENT	18
LAKE MONTROSE VOLUNTEER FIRE DEPARTMENT	2
LAKE VOLUNTEER FIRE DEPARTMENT/SCOTT COUNTY	2
LAMAR COUNTY EMA	2
LAMAR COUNTY FIRE SERVICES	16
LAMAR COUNTY SHERIFF'S DEPARTMENT	2
LAMBERT VOLUNTEER FIRE DEPARTMENT	20
LANGFORD VOLUNTEER FIRE DEPARTMENT	21
LAUDERDALE COUNTY FIRE SERVICES	16
LAUDERDALE COUNTY EMERGENCY MANAGEMENT	4
LAUDERDALE COUNTY FIRE COORDINATOR	2
LAUDERDALE VOLUNTEER FIRE DEPARTMENT	4
LAUREL FIRE DEPARTMENT	66
LAWRENCE COUNTY FIRE COORDINATOR	2
LEAKE COUNTY EMA	1
LEAKE COUNTY FIRE COORDINATOR	2
LEAKE COUNTY SHERIFF'S DEPARTMENT	1
LEARNED VOLUNTEER FIRE DEPARTMENT	16
LEE COUNTY SHERIFF'S DEPARTMENT	1



2011 PARTICIPATION REPORT BY ORGANIZATION (Cont.)

Organization Name	Student Count
LEESBURG VOLUNTEER FIRE DEPARTMENT	9
LEETOWN VOLUNTEER FIRE DEPARTMENT	30
LEFLORE COUNTY SHERIFF'S DEPARTMENT	1
LELAND FIRE DEPARTMENT	21
LEMOYNE INDUSTRIAL PARK	10
LENA VOLUNTEER FIRE DEPARTMENT	4
LETOURNEAU COMMUNITY FIRE DEPARTMENT	9
LEWISBURG VOLUNTEER FIRE DEPARTMENT	28
LEXIE VOLUNTEER FIRE DEPARTMENT	1
LEXINGTON VOLUNTEER FIRE DEPARTMENT	5
LIBERTY GROVE VOLUNTEER FIRE DEPARTMENT/ITAWAMBA CTY	3
LIBERTY ROAD VOLUNTEER FIRE DEPARTMENT/ADAMS COUNTY	25
LIZANA VOLUNTEER FIRE DEPARTMENT	25
LONE STAR VOLUNTEER FIRE DEPARTMENT	2
LONG BEACH FIRE DEPARTMENT	74
LONG BRANCH VOLUNTEER FIRE DEPARTMENT	9
LONG CREEK VOLUNTEER FIRE DEPARTMENT	6
LONGTOWN VOLUNTEER FIRE DEPARTMENT	7
LONGVIEW VOLUNTEER FIRE DEPARTMENT	3
LOOP, LLC	5
LORMAN VOLUNTEER FIRE DEPARTMENT	12
LOST GAP VOLUNTEER FIRE DEPARTMENT	4
LOUIN VOLUNTEER FIRE DEPARTMENT	17
LOUISE VOLUNTEER FIRE DEPARTMENT	3
LOUISVILLE FIRE DEPARTMENT	125
LOVE VOLUNTEER FIRE DEPARTMENT	31
LOWNDES COUNTY ARSON INVESTIGATOR	1
LOWNDES COUNTY DISTRICT 5/ARTESIA FIRE DEPARTMENT	6
LOWNDES COUNTY EMA	5
LOWNDES COUNTY SHERIFF'S DEPARTMENT	1
LOYD STAR VOLUNTEER FIRE DEPARTMENT	3
LSR VOLUNTEER FIRE DEPARTMENT/SUNFLOWER COUNTY	3
LUCEDALE FIRE DEPARTMENT	5
LUCEDALE POLICE DEPARTMENT	1
LUCITE INTERNATIONAL	9
LUDLOW VOLUNTEER FIRE DEPARTMENT	4
LULA VOLUNTEER FIRE DEPARTMENT	3
LUMBERTON VOLUNTEER FIRE DEPARTMENT	49
LYON VOLUNTEER FIRE DEPARTMENT	5
MABEN VOLUNTEER FIRE DEPARTMENT	13
MACON VOLUNTEER FIRE DEPARTMENT	4
MADISON COUNTY ARSON INVESTIGATOR	2
MADISON FIRE DEPARTMENT	112



2011 PARTICIPATION REPORT BY ORGANIZATION (Cont.)

Organization Name	Student Count
MADISON POLICE DEPARTMENT	31
MAGEE FIRE DEPARTMENT	29
MAGNOLIA VOLUNTEER FIRE DEPARTMENT	40
MANTACHIE VOLUNTEER FIRE DEPARTMENT	21
MANTEE VOLUNTEER FIRE DEPARTMENT	1
MARION/JEFFERSON DAVIS COUNTY CIVIL DEFENSE	2
MARKS VOLUNTEER FIRE DEPARTMENT	5
MARS HILL VOLUNTEER FIRE DEPARTMENT/WINSTON COUNTY	1
MARTIN VOLUNTEER FIRE DEPARTMENT	4
MARYDELL/BARNES VOLUNTEER FIRE DEPARTMENT	1
MATHISTON VOLUNTEER FIRE DEPARTMENT	13
MAYORSVILLE VOLUNTEER FIRE DEPARTMENT	8
MCCOMB FIRE DEPARTMENT	95
MCHENRY VOLUNTEER FIRE DEPARTMENT	24
MCLAURIN VOLUNTEER FIRE DEPARTMENT	9
MEADVILLE VOLUNTEER FIRE DEPARTMENT	6
MEEHAN VOLUNTEER FIRE DEPARTMENT	12
MELBOURNE AIRPORT AUTHORITY	1
MS EMERGENCY MANAGEMENT AGENCY	3
MENDENHALL VOLUNTEER FIRE DEPARTMENT	22
MERIDIAN-CITY OF-HOMELAND SECURITY	2
MERIDIAN FIRE DEPARTMENT	524
MERIDIAN POLICE DEPARTMENT	8
MERIDIAN PUBLIC SAFETY TRAINING FACILITY	2
MID-DELTA REGIONAL AIRPORT	6
MIDWAY VOLUNTEER FIRE DEPARTMENT/SCOTT COUNTY	3
MIDWAY VOLUNTEER FIRE DEPARTMENT/TISHOMINGO CTY DIS	1
MIDWAY VOLUNTEER FIRE DEPARTMENT/YAZOO COUNTY	12
MINTER CITY VOLUNTEER FIRE DEPARTMENT	1
MITCHELL VOLUNTEER FIRE DEPARTMENT	13
MIZE VOLUNTEER FIRE DEPARTMENT	14
MOBILE FIRE & RESCUE DEPARTMENT	25
MOBILE FIRE DEPARTMENT	3
MONEY VOLUNTEER FIRE DEPARTMENT	14
MONROE COUNTY FIRE COORDINATOR	1
MONROE COUNTY SHERIFF'S DEPARTMENT	2
MONROE FIRE DEPARTMENT	23
MONTEREY VOLUNTEER FIRE DEPARTMENT	17
MONTICELLO FIRE DEPARTMENT	53
MONTROSE VOLUNTEER FIRE DEPARTMENT	5
MOOREVILLE VOLUNTEER FIRE DEPARTMENT	5
MOORHEAD VOLUNTEER FIRE DEPARTMENT	15
MORGAN CITY VOLUNTEER FIRE DEPARTMENT	3



2011 PARTICIPATION REPORT BY ORGANIZATION (Cont.)

Organization Name	Student Count
MORGANTOWN VOLUNTEER FIRE DEPARTMENT	7
MORTON POLICE DEPARTMENT	1
MORTON VOLUNTEER FIRE DEPARTMENT	3
MOSELLE VOLUNTEER FIRE DEPARTMENT	10
MOSS POINT FIRE DEPARTMENT	48
MOSSVILLE VOLUNTEER FIRE DEPARTMENT	8
MOUND BAYOU VOLUNTEER FIRE DEPARTMENT	3
MOUNT OLIVE VOLUNTEER FIRE DEPARTMENT	4
MOUNTAIN CREEK VOLUNTEER FIRE DEPARTMENT	6
MOVELLA VOLUNTEER FIRE DEPARTMENT	9
MS AIR GUARD/MERIDIAN/186 REFUELING GROUP	30
MS ANG/AIRPORT FIRE DEPARTMENT 172ND CES	44
MS DEPARTMENT OF WILDLIFE	1
MS GULF COAST COMMUNITY COLLEGE	66
MS GULF COAST COMMUNITY COLLEGE-GAUTIER	30
MS HIGHWAY PATROL/PANOLA COUNTY	115
MS POWER COMPANY	68
MS STATE HEALTH DEPARTMENT-LICENSURE & CERTIFICATION	1
MS STATE PENITENTIARY/PARCHMAN FIRE DEPARTMENT	26
MT. NEBO FIRE DEPARTMENT/KEMPER COUNTY DISTRICT 5	6
MT. OLIVET VOLUNTEER FIRE DEPARTMENT	2
MT. PISGAH VOLUNTEER FIRE DEPARTMENT/CARROLL COUNTY	6
MT. PISGAH VOLUNTEER FIRE DEPARTMENT/GREENE COUNTY	2
MT. PISGAH VOLUNTEER FIRE DEPARTMENT/ GREENE CTY-USE	1
MT. SALEM VOLUNTEER FIRE DEPARTMENT	9
MURPHREESBORO VOLUNTEER FIRE DEPARTMENT	5
MYRICK & MILL CREEK FIRE DEPARTMENT	19
MYRTLE VOLUNTEER FIRE DEPARTMENT	29
N. E. JASPER VOLUNTEER FIRE DEPARTMENT	3
N. BENTON COUNTY VOLUNTEER FIRE DEPARTMENT	16
N. E. CALHOUN VOLUNTEER FIRE DEPARTMENT	4
N. E. CLAY COUNTY/#100 VOLUNTEER FIRE DEPARTMENT	1
N. E. ITAWAMBA/FAIRVIEW FIRE DEPARTMENT	50
N. E. LAMAR VOLUNTEER FIRE DEPARTMENT	8
N. E. LAUDERDALE VOLUNTEER FIRE DEPARTMENT	2
N. E. PEARL RIVER COUNTY FIRE DEPARTMENT	1
N. E. UNION FIRE DEPARTMENT	15
N. E. WARREN COUNTY VOLUNTEER FIRE DEPARTMENT	4
N. FORREST COUNTY VOLUNTEER FIRE DEPARTMENT	8
N. MS AMBULANCE SERVICE	2
N. W. LOWNDES/DISTRICT 2 FIRE DEPARTMENT	7
N. WOOLMARKET VOLUNTEER FIRE DEPARTMENT	3
NANIH WAIYA VOLUNTEER FIRE DEPARTMENT	16



2011 PARTICIPATION REPORT BY ORGANIZATION (Cont.)

Organization Name	Student Count
NATCHEZ FIRE DEPARTMENT	95
NATCHEZ POLICE DEPARTMENT	2
NATCHEZ-ADAMS COUNTY AIRPORT	4
NAVAL AIR STATION FIRE DEPARTMENT/MERIDIAN	2
NESBIT VOLUNTEER FIRE DEPARTMENT	2
NESHOBA COUNTY EMA	2
NESHOBA COUNTY SHERIFF'S DEPARTMENT	2
NETTLETON VOLUNTEER FIRE DEPARTMENT	6
NEW ALBANY FIRE DEPARTMENT	50
NEW AUGUSTA VOLUNTEER FIRE DEPARTMENT	11
NEW HEBRON VOLUNTEER FIRE/RESCUE	17
NEW HOPE FIRE DEPARTMENT/LOWNDES COUNTY DISTRICT 3	4
NEW HOPE VOLUNTEER FIRE DEPARTMENT/KEMPER COUNTY	8
NEW ORLEANS FIRE DEPARTMENT	1
NEW SIGHT VOLUNTEER FIRE DEPARTMENT/ LINCOLN COUNTY	4
NEW SITE VOLUNTEER FIRE DEPARTMENT/PRENTISS COUNTY	9
NEWTON COUNTY FIRE COORDINATOR	3
NEWTON COUNTY SHERIFF'S DEPARTMENT	4
NEWTON FIRE DEPARTMENT	4
NICHOLSON VOLUNTEER FIRE DEPARTMENT	11
NORANDA ALUMINA	33
NORTH CENTRAL YAZOO VOLUNTEER FIRE DEPARTMENT	1
NORTH HAVEN VOLUNTEER FIRE DEPARTMENT	1
NORTH OKALOOSA FIRE DISTRICT	21
NORTH PLEASANT HILL FIRE DEPARTMENT	2
NORTH TUNICA COUNTY FIRE PROTECTION DISTRICT	52
NOXUBEE COUNTY FIRE COORDINATOR	5
OAK BOWERY VOLUNTEER FIRE DEPARTMENT	11
OAK GROVE VOLUNTEER FIRE DEPARTMENT/WALTHALL COUNTY	5
OAK GROVE/BEAT 4 LAMAR COUNTY FIRE DEPARTMENT	10
OAKLEY TRAINING SCHOOL	1
OAKVALE VOLUNTEER FIRE DEPARTMENT	5
OCEAN SPRINGS FIRE DEPARTMENT	76
OFAHOMA VOLUNTEER FIRE DEPARTMENT	10
OKOLONA FIRE DEPARTMENT	27
OKTIBBEHA COUNTY DISTRICT 5 FIRE DEPARTMENT	4
OKTIBBEHA COUNTY SHERIFF'S DEPARTMENT	3
OLIVE BRANCH FIRE DEPARTMENT	41
OLOH VOLUNTEER FIRE DEPARTMENT	13
OMA VOLUNTEER FIRE DEPARTMENT	1
OSYKA VOLUNTEER FIRE DEPARTMENT	5
O'TUCKOLOFA VOLUNTEER FIRE DEPARTMENT	1
OVETT VOLUNTEER FIRE DEPARTMENT	17



2011 PARTICIPATION REPORT BY ORGANIZATION (Cont.)

Organization Name	Student Count
OXFORD FIRE DEPARTMENT	136
PACHUTA VOLUNTEER FIRE DEPARTMENT	7
PADEN VOLUNTEER FIRE DEPARTMENT	7
PALM BEACH COUNTY FIRE DEPARTMENT	1
PALMETTO VOLUNTEER FIRE DEPARTMENT	4
PANOLA COUNTY CIVIL DEFENSE	4
PARKER FIRE DEPARTMENT	3
PASCAGOULA FIRE DEPARTMENT	32
PASCAGOULA POLICE DEPARTMENT	4
PASS CHRISTIAN FIRE DEPARTMENT	128
PASS CHRISTIAN POLICE DEPARTMENT	8
PAULDING VOLUNTEER FIRE DEPARTMENT	8
PAYNES VOLUNTEER FIRE DEPARTMENT	24
PEARL FIRE DEPARTMENT	186
PEARL POLICE DEPARTMENT	2
PEARL RIVER COUNTY SHERIFF'S DEPARTMENT	1
PECO ENERGY	1
PELAHATCHIE VOLUNTEER FIRE DEPARTMENT	139
PERKINSTON VOLUNTEER FIRE DEPARTMENT	14
PERRY COUNTY SHERIFF'S DEPARTMENT	1
PETAL FIRE DEPARTMENT	16
PHEBA VOLUNTEER FIRE DEPARTMENT/CLAY COUNTY # 500	5
PHILADELPHIA FIRE DEPARTMENT	63
PHILLIPSTON VOLUNTEER FIRE DEPARTMENT	4
PICAYUNE FIRE DEPARTMENT	41
PINE GROVE VOLUNTEER FIRE DEPARTMENT	3
PINE RIDGE VOLUNTEER FIRE DEPARTMENT	17
PINE VALLEY VOLUNTEER FIRE DEPARTMENT	12
PINEDALE VOLUNTEER FIRE DEPARTMENT	7
PINEVILLE VOLUNTEER FIRE DEPARTMENT	15
PINOLA VOLUNTEER FIRE DEPARTMENT	3
PISGAH COMMUNITY FIRE DEPARTMENT	12
PITTSBORO VOLUNTEER FIRE DEPARTMENT	12
PLEASANT GROVE VOLUNTEER FIRE DEPARTMENT/PANOLA CTY	2
PLEASANT RIDGE VOLUNTEER FIRE DEPARTMENT	1
POCAHONTAS VOLUNTEER FIRE DEPARTMENT	50
POLKVILLE VOLUNTEER FIRE DEPARTMENT	10
PONTOTOC COUNTY SHERIFF'S DEPARTMENT	1
PONTOTOC FIRE DEPARTMENT	12
POPE VOLUNTEER FIRE DEPARTMENT	11
POPLAR CREEK VOLUNTEER FIRE DEPARTMENT	5
POPLARVILLE FIRE DEPARTMENT	7
PORTERVILLE VOLUNTEER FIRE DEPARTMENT	18



2011 PARTICIPATION REPORT BY ORGANIZATION (Cont.)

Organization Name	Student Count
POTTS CAMP VOLUNTEER FIRE DEPARTMENT	1
POWERS VOLUNTEER FIRE DEPARTMENT	8
PRAIRIE POINT FIRE DEPARTMENT/NOXUBEE CTY	3
PRAIRIE VOLUNTEER FIRE DEPARTMENT	4
PRENTISS COUNTY EMA	2
PRENTISS FIRE DEPARTMENT	18
PRESTON FIRE DEPARTMENT/KEMPER COUNTY DISTRICT 4	9
PROGRESS VOLUNTEER FIRE DEPARTMENT/PIKE COUNTY	16
PROVIDENCE STATION VOLUNTEER FIRE DEPARTMENT	2
PUCKETT VOLUNTEER FIRE DEPARTMENT	6
PURVIS POLICE DEPARTMENT	4
PURVIS VOLUNTEER FIRE DEPARTMENT	4
QUITMAN VOLUNTEER FIRE DEPARTMENT	1
RALEIGH VOLUNTEER FIRE DEPARTMENT	49
RAMSEY SPRINGS VOLUNTEER FIRE DEPARTMENT	1
RANDOLPH VOLUNTEER FIRE DEPARTMENT	3
RANKIN COUNTY ARSON INVESTIGATOR	1
RANKIN COUNTY EOC	14
RANKIN COUNTY SHERIFF'S DEPARTMENT	2
RAYMOND VOLUNTEER FIRE DEPARTMENT	5
RED HILL VOLUNTEER FIRE DEPARTMENT	5
REDLICK VOLUNTEER FIRE DEPARTMENT	2
REFORM VOLUNTEER FIRE DEPARTMENT/CHOCTAW COUNTY	3
REFORMATION VOLUNTEER FIRE DEPARTMENT/LEAKE COUNTY	3
RESERVOIR FIRE PROTECTION DISTRICT	50
RHODES CHAPEL VOLUNTEER FIRE DEPARTMENT	11
RHODIA CHEMICAL	26
RICHLAND FIRE DEPARTMENT	68
RIDGELAND FIRE DEPARTMENT	103
RIENZI VOLUNTEER FIRE DEPARTMENT	7
RIPLEY VOLUNTEER FIRE DEPARTMENT	23
ROBINHOOD VOLUNTEER FIRE DEPARTMENT	17
ROCK HILL VOLUNTEER FIRE DEPARTMENT	15
ROCKY CREEK VOLUNTEER FIRE DEPARTMENT	3
ROGERS FIRE DEPARTMENT	6
ROLLING CREEK VOLUNTEER FIRE DEPARTMENT	1
ROLLING FORK VOLUNTEER FIRE DEPARTMENT	36
ROSE HILL VOLUNTEER FIRE DEPARTMENT	7
ROSEBLOOM VOLUNTEER FIRE DEPARTMENT	3
ROSEBURG FOREST PRODUCTS SPL-LOUISVILLE	17
ROXIE VOLUNTEER FIRE DEPARTMENT	4
RULEVILLE VOLUNTEER FIRE DEPARTMENT	15
RUNNELSTOWN VOLUNTEER FIRE DEPARTMENT	1



2011 PARTICIPATION REPORT BY ORGANIZATION (Cont.)

Organization Name	Student Count
RURAL HILL VOLUNTEER FIRE DEPARTMENT	3
RURAL METRO FIRE DEPARTMENT/SIKORSKY	9
RURAL METRO FIRE RESCUE/FL	2
RUSSELL FIRE & RESCUE	9
RUSTIN VOLUNTEER FIRE DEPARTMENT	7
RUTH VOLUNTEER FIRE DEPARTMENT	8
S. E. CHICKASAW FIRE DEPARTMENT	9
S. E. COVINGTON VOLUNTEER FIRE DEPARTMENT	15
S. E. LAMAR VOLUNTEER FIRE DEPARTMENT	18
S. E. UNION FIRE DEPARTMENT	16
S. JONES VOLUNTEER FIRE DEPARTMENT	2
S. LAUDERDALE VOLUNTEER FIRE DEPARTMENT	8
S. LEE COUNTY VOLUNTEER FIRE DEPARTMENT	1
S. MARION VOLUNTEER FIRE DEPARTMENT	10
S. W. ALCORN VOLUNTEER FIRE DEPARTMENT	1
S. W. COVINGTON VOLUNTEER FIRE DEPARTMENT	5
S. W. JONES VOLUNTEER FIRE DEPARTMENT	2
S. W. LAMAR VOLUNTEER FIRE DEPARTMENT	24
S. W. MADISON FIRE DEPARTMENT	28
SALEM VOLUNTEER FIRE DEPARTMENT	3
SALLIS FIRE DEPARTMENT/ATTALA COUNTY BEAT 4	10
SALTILLO FIRE DEPARTMENT	7
SAM DALE COMMUNITY VOLUNTEER FIRE DEPARTMENT	1
SANDERSVILLE VOLUNTEER FIRE DEPARTMENT	17
SAND HILL FIRE DEPARTMENT/GREENE COUNTY BEAT 3	6
SARDIS LOWER LAKE FIRE DEPARTMENT	9
SARDIS VOLUNTEER FIRE DEPARTMENT	17
SAUCIER VOLUNTEER FIRE DEPARTMENT	13
SCHLATER VOLUNTEER FIRE DEPARTMENT	13
SCOOBA VOLUNTEER FIRE DEPARTMENT	9
SCOTT COUNTY FIRE COORDINATOR	1
SEBASTOPOL VOLUNTEER FIRE DEPARTMENT	6
SEMINARY VOLUNTEER FIRE DEPARTMENT	3
SENATOBIA FIRE DEPARTMENT	39
SHADY GROVE VOLUNTEER FIRE DEPARTMENT	2
SHANNON VOLUNTEER FIRE DEPARTMENT	5
SHARKEY COUNTY SHERIFF'S DEPARTMENT	1
SHARKEY HAMPTON VOLUNTEER FIRE DEPARTMENT	10
SHARON VOLUNTEER FIRE DEPARTMENT	5
SHAW FIRE DEPARTMENT/BOLIVAR COUNTY DISTRICT	5
SHELBY VOLUNTEER FIRE DEPARTMENT/ BOLIVAR CTY DISTRICT	1
SHELL ROAD VOLUNTEER FIRE DEPARTMENT	5
SHERMAN VOLUNTEER FIRE DEPARTMENT	15



2011 PARTICIPATION REPORT BY ORGANIZATION (Cont.)

Organization Name	Student Count
SHILOH VOLUNTEER FIRE DEPARTMENT	10
SHIPMAN VOLUNTEER FIRE DEPARTMENT	2
SHUQUALAK VOLUNTEER FIRE DEPARTMENT	16
SIDON VOLUNTEER FIRE DEPARTMENT	3
SILVER CREEK VOLUNTEER FIRE DEPARTMENT	5
SILVER RUN VOLUNTEER FIRE DEPARTMENT	4
SIMPSON COUNTY EMERGENCY MANAGEMENT	2
SIMPSON COUNTY FIRE STATION # 7	16
SIMPSON COUNTY SHERIFF'S DEPARTMENT	2
SIMPSON VOLUNTEER FIRE DEPARTMENT	1
SIPSEY RIVER VOLUNTEER FIRE DEPARTMENT	3
SLAYDEN-MT. PLEASANT FIRE DEPARTMENT	11
SLEDGE VOLUNTEER FIRE DEPARTMENT	3
SMITH COUNTY EMA	3
SMITH COUNTY SHERIFF'S DEPARTMENT	4
SMITHVILLE VOLUNTEER FIRE DEPARTMENT	9
SMYRNA VOLUNTEER FIRE DEPARTMENT	21
SNOW LAKE VOLUNTEER FIRE DEPARTMENT	23
SNOWDOWN/PLEASANT HILL VOLUNTEER FIRE DEPARTMENT	6
SONTAG VOLUNTEER FIRE DEPARTMENT	8
SOSO VOLUNTEER FIRE DEPARTMENT	6
SOUTH MS CORRECTIONAL FACILITY	15
SOUTH TISHOMINGO VOLUNTEER FIRE DEPARTMENT	4
SOUTHAVEN FIRE DEPARTMENT	55
SOUTHEAST PEARL RIVER VOLUNTEER FIRE DEPARTMENT	19
SOUTHWEST MARION VOLUNTEER FIRE DEPARTMENT	6
SOUTHWEST RANKIN VOLUNTEER FIRE DEPARTMENT	5
SPOUT SPRINGS VOLUNTEER FIRE DEPARTMENT	15
SPRING HILL VOLUNTEER FIRE DEPARTMENT/KEMPER COUNTY	18
SPRINGHILL VOLUNTEER FIRE DEPARTMENT/TALLAHATCHIE CO.	3
ST. CROIX, VIRGIN ISLANDS PORT AUTHORITY	15
ST. TAMMANY, LA FIRE DIST #1	5
ST. TAMMANY, LA FIRE DIST. #2	2
ST. TAMMANY, LA FIRE DIST. #4	4
STANDING PINE VOLUNTEER FIRE DEPARTMENT	22
STAR VOLUNTEER FIRE DEPARTMENT	27
STARKVILLE FIRE DEPARTMENT	187
STATE FIRE MARSHAL'S OFFICE	9
STATE LINE VOLUNTEER FIRE DEPARTMENT	8
STEEP HOLLOW VOLUNTEER FIRE DEPARTMENT	8
STENNIS SPACE CENTER/JOHNSON CONTROLS	2
STEWART VOLUNTEER FIRE DEPARTMENT	3
STOLTHAVEN NEW ORLEANS, LLC	10



2011 PARTICIPATION REPORT BY ORGANIZATION (Cont.)

Organization Name	Student Count
STONE COUNTY FIRE COORDINATOR	1
STRINGER VOLUNTEER FIRE DEPARTMENT	17
STRONG HOPE VOLUNTEER FIRE DEPARTMENT	2
STUDENT/NOT WITH CODED DEPARTMENT	1
STURGIS/DIST. 4 VOLUNTEER FIRE DEPARTMENT	5
SUMMERSHILL VOLUNTEER FIRE DEPARTMENT	8
SUMMIT VOLUNTEER FIRE DEPARTMENT/PIKE COUNTY	5
SUMRALL VOLUNTEER FIRE DEPARTMENT	3
SUNFLOWER VOLUNTEER FIRE DEPARTMENT	21
SUNRISE VOLUNTEER FIRE DEPARTMENT	4
SUQUALENA VOLUNTEER FIRE DEPARTMENT	5
SYLVARENA VOLUNTEER FIRE DEPARTMENT/YALOBUSHA COUNTY	1
TALLAHATCHIE COUNTY FIRE COORDINATOR	2
TALLAHATCHIE COUNTY SHERIFF'S DEPARTMENT	2
TATE COUNTY DISTRICT 1 FIRE DEPARTMENT	4
TATE COUNTY FIRE COORDINATOR	1
TATE COUNTY SHERIFF'S DEPARTMENT	3
TAYLORSVILLE VOLUNTEER FIRE DEPARTMENT	3
TCHULA VOLUNTEER FIRE DEPARTMENT	3
TEASDALE VOLUNTEER FIRE DEPARTMENT	6
THAXTON VOLUNTEER FIRE DEPARTMENT	15
THEADVILLE VOLUNTEER FIRE DEPARTMENT	3
THORN VOLUNTEER FIRE DEPARTMENT	27
THRASHER VOLUNTEER FIRE DEPARTMENT	3
THREE FORKS FIRE DEPARTMENT	3
THREE MILE CORNER VOLUNTEER FIRE DEPARTMENT	4
THREE RIVERS VOLUNTEER FIRE DEPARTMENT	9
TIBBEE VOLUNTEER FIRE DEPARTMENT/CLAY COUNTY #200	1
TIE PLANT VOLUNTEER FIRE DEPARTMENT	24
TILDEN-NEW SALEM FIRE DEPARTMENT	28
TILLATOBA VOLUNTEER FIRE DEPARTMENT	4
TIPPAH COUNTY FIRE COORDINATOR	5
TIPPAH COUNTY SHERIFF'S DEPARTMENT	1
TISHOMINGO COUNTY FIRE COORDINATOR	2
TISHOMINGO COUNTY SHERIFF'S DEPARTMENT	2
TOCCOPOLA VOLUNTEER FIRE DEPARTMENT	4
TOMNOLEN VOLUNTEER FIRE DEPARTMENT	1
TOOMSUBA VOLUNTEER FIRE DEPARTMENT	25
TOPEKA/DIST 3 VOLUNTEER FIRE DEPARTMENT	29
TOTAL PETROCHEMICALS	9
TREMONT/DIST. 4 VOLUNTEER FIRE DEPARTMENT	8
TRI-COMMUNITY VOLUNTEER FIRE DEPARTMENT/MARION CO.	68
TRI-COMMUNITY VOLUNTEER FIRE DEPARTMENT/YAZOO CO.	37



2011 PARTICIPATION REPORT BY ORGANIZATION (Cont.)

Organization Name	Student Count
TROY-WOODLAND VOLUNTEER FIRE DEPARTMENT	5
TUCKER VOLUNTEER FIRE DEPARTMENT	5
TUNICA AIRPORT	6
TUNICA COUNTY SHERIFF'S DEPARTMENT	3
TUNICA VOLUNTEER FIRE DEPARTMENT	47
TUPELO AIRPORT AUTHORITY	1
TUPELO FIRE DEPARTMENT	135
TUSCUMBIA/NEW CHANDLER VOLUNTEER FIRE DEPARTMENT	2
TUTWILER VOLUNTEER FIRE DEPARTMENT	3
TWIN CREEK VOLUNTEER FIRE DEPARTMENT	4
TYLERTOWN VOLUNTEER FIRE DEPARTMENT	1
U.S. ENVIRONMENTAL SERVICES	4
UNA VOLUNTEER FIRE DEPARTMENT/CLAY COUNTY # 400	1
UNCODED DEPARTMENT OR INDUSTRY	138
UNION CARBIDE-DOW	1
UNION CARBIDE-DOW/ST. CHARLES	1
UNION CENTER/THEO VOLUNTEER FIRE DEPARTMENT	6
UNION COUNTY EMA	3
UNION COUNTY FIRE COORDINATOR	1
UNION COUNTY SHERIFF'S DEPARTMENT	12
UNION VOLUNTEER FIRE DEPARTMENT/CHOCTAW COUNTY	1
UNION VOLUNTEER FIRE DEPARTMENT/JONES COUNTY	12
UNITY VOLUNTEER FIRE DISTRICT	4
UNIVERSITY OF MISSISSIPPI POLICE DEPARTMENT	27
USES	1
VAIDEN VOLUNTEER FIRE DEPARTMENT	22
VALLEY GROVE VOLUNTEER FIRE DEPARTMENT	4
VALLEY HILL VOLUNTEER FIRE DEPARTMENT	3
VAN VLEET VOLUNTEER FIRE DEPARTMENT	9
VANCLEAVE VOLUNTEER FIRE DEPARTMENT	16
VARDAMAN VOLUNTEER FIRE DEPARTMENT	22
VAUGHN VOLUNTEER FIRE DEPARTMENT	5
VELMA VOLUNTEER FIRE DEPARTMENT	1
VERONA FIRE DEPARTMENT	22
VICKSBURG FIRE DEPARTMENT	148
VICKSBURG-WARREN 911	2
VICTORIA FIRE DEPARTMENT	3
VIMVILLE VOLUNTEER FIRE DEPARTMENT	8
WACKENHUT SECURITY	1
WALLS FIRE DEPARTMENT	80
WALNUT GROVE VOLUNTEER FIRE DEPARTMENT	3
WALNUT GROVE YOUTH CORRECTIONAL FACILITY	1
WALNUT VOLUNTEER FIRE DEPARTMENT	13



2011 PARTICIPATION REPORT BY ORGANIZATION (Cont.)

Organization Name	Student Count
WALTERS VOLUNTEER FIRE DEPARTMENT	10
WALTHALL COUNTY 3RD DIST FIRE DEPARTMENT	4
WALTHALL COUNTY 4TH DIST VOLUNTEER FIRE DEPARTMENT	17
WALTHALL VOLUNTEER FIRE DEPARTMENT	1
WARD VOLUNTEER FIRE DEPARTMENT	7
WARREN COUNTY FIRE COORDINATOR	1
WARREN COUNTY SHERIFF'S DEPARTMENT	1
WATER VALLEY FIRE DEPARTMENT	5
WATERFORD VOLUNTEER FIRE DEPARTMENT	7
WATSON VOLUNTEER FIRE DEPARTMENT	7
WAVELAND FIRE DEPARTMENT	48
WAYNE COUNTY CENTRAL FIRE STATION	46
WAYNE COUNTY SHERIFF'S DEPARTMENT	1
WAYNESBORO FIRE DEPARTMENT	2
WEBSTER COUNTY CIVIL DEFENSE	4
WEBSTER COUNTY SHERIFF'S DEPARTMENT	2
WEIR VOLUNTEER FIRE DEPARTMENT	6
WENASOGA VOLUNTEER FIRE DEPARTMENT	3
WESSON VOLUNTEER FIRE DEPARTMENT	32
WEST HANCOCK VOLUNTEER FIRE DEPARTMENT	64
WEST HARRISON VOLUNTEER FIRE DEPARTMENT	7
WEST HINDS VOLUNTEER FIRE DEPARTMENT	2
WEST JACKSON COUNTY VOLUNTEER FIRE DEPARTMENT	2
WEST POINT FIRE DEPARTMENT	12
WEST VOLUNTEER FIRE DEPARTMENT	2
WHEELER VOLUNTEER FIRE DEPARTMENT	8
WIGGINS FIRE DEPARTMENT	18
WILKINSON COUNTY SHERIFF'S DEPARTMENT	1
WINONA FIRE DEPARTMENT	4
WINSTON COUNTY FIRE TRAINING OFFICER	1
WINSTONVILLE VOLUNTEER FIRE DEPARTMENT	5
WOODLAND VOLUNTEER FIRE DEPARTMENT	21
WOODVILLE VOLUNTEER FIRE DEPARTMENT	2
WREN VOLUNTEER FIRE DEPARTMENT	8
YAZOO CITY FIRE DEPARTMENT	75
ZAMA VOLUNTEER FIRE DEPARTMENT	7
ZETUS VOLUNTEER FIRE DEPARTMENT	2



“Making A Difference!”