

DEH-P4700MP

NEW FOR 2005

- SUPER TUNER III D
- MP3
- CD TEXT
- WMA
- EQ
- MOSFET 50
- SAT READY
- CD CONTROL



CD Receiver with Multi-Color LCD Display, iPod® Adapter Ready, MP3/WMA Playback, MOSFET50, XM-Ready, SIRIUS-Ready, Supertuner® III D™, IP-Bus System Control, Slim Remote, Pop-up Rotary Volume Control, Flap Face, and Detachable Face Security™

DEH-P3700MP

NEW FOR 2005

- SUPER TUNER III D
- MP3
- CD TEXT
- WMA
- EQ
- MOSFET 50
- SAT READY
- CD CONTROL



CD Receiver with Multi-Color LCD Display, iPod® Adapter Ready, MP3/WMA Playback, MOSFET50, XM-Ready, SIRIUS-Ready, Supertuner® III D™, IP-Bus System Control, Slim Remote, Rotary Volume Control, and Detachable Face Security™

NEW FOR 2005

- SUPER TUNER III D
- EQ
- 45Wx4
- SUPER TUNER III D
- DETACHABLE FACE SECURITY



CD Receiver with Multi-Color LCD Display, 45W x 4 high power, Supertuner® III D™, Rotary Volume Control, and Detachable Face Security™

NEW FOR 2005

- SUPER TUNER III D
- 45Wx4
- SUPER TUNER III D
- DETACHABLE FACE SECURITY



CD Receiver with Blue Background LCD Display, 45W x 4 high power, Supertuner® III D™, and Detachable Face Security™

	DEH-P9600MP	DEH-P8600MP	DEH-P80MP	DEH-P7700MP	DEH-P6700MP	DEH-P4700MP	DEH-P3700MP	DEH-2700	DEH-1700
<b>SUPERTUNER SECTION</b>									
Supertuner	III D	III D	III D	III D+	III D	III D	III D	III D	III D
XM Radio Ready	x	x	x	x	x	x	x		
SIRIUS-Ready	x	x	x	x	x	x	x		
24-Station/6-Button (18FM/6AM) Presets	x	x	x	x	x	x	x	x	x
BSM (Best Stations Memory)	x	x	x	x	x	x	x	x	x
<b>CD PLAYER</b>									
1-bit D/A Converter	8fs/24-bit*1	8fs/24-bit*1	8fs/16-bit	8fs/16-bit	8fs/16-bit	8fs/16-bit	8fs/16-bit	8fs/16-bit	8fs/16-bit
CD-R/CD-RW Compatible	x	x	x	x	x	x	x	x	x
MP3 Compatible	x	x	x	x	x	x	x		
WMA (Windows Media® Audio)	x	x	x	x	x	x	x		
Wave (.wav) Compatible	x	x	x	x	x	x	x		
iTunes®*2 AAC*3 Playback				x					
AGC (Automatic Gain Control)	x	x	x	x	x	x	x	x	x
Disc Title Memory	x	x	x	x	x	x	x		
Disc List	x	x	x	x	x				
CD Text	x	x	x	x	x	x	x		
IP-Bus (Changer Control)	x	x	x	x	x	x	x		
BMX Digital Compression (SCD)	x	x	x	x	x	x	x		
DBE (MCD)	x	x	x	x	x	x	x		
<b>AUDIO SECTION</b>									
MOSFET60 (60Wx4-Channel High Power)				x					
MOSFET50 (50Wx4-Channel High Power)	x	x		x	x	x	x		
45W x 4-Channel Power								x	x
Equalizer	13-Band	13-Band	3-Band Parametric	3-Band Parametric	3-Band Parametric	3-Band Parametric	3-Band Parametric	3-Band Parametric	Bass/Treble
SFEQ (Sound Focus EQ)			x						
EQ-EX			x	x	x				
Selectable FIE (Front Image Enhancer)						x	x	x	
DSP	x	x							
Auto-EQ (with Mic Included)	x	x							
Auto Time Alignment	x	x							
BBE	x	x							
Source Level Adjuster (SLA)	x	x	x	x	x	x	x	x	x
Automatic Sound Levelizer (ASL)	x	x	x	x					
Loudness	x	x	x	3 Mode	3 Mode	3 Mode	3 Mode	3 Mode	2 Mode
Listening Position Selector	x	x							
Selectable Fader	x	x	x	x	x	x	x	x	x
HPF Crossover	x	x	x	x	x				
Subwoofer (LPF) Crossover	x	x	x	x	x				
Hi-Volt RCA Preouts	3 (4.0V)	3 (4.0V)	3 (4.0V)						
RCA Preouts				3 (2.2V)	2 (2.2V)	2 (2.2V)	2 (2.2V)	1 (2.2V)	1 (2.2V)
<b>GENERAL</b>									
iPod® Adapter Ready*4	x	x	x	x	x	x	x	x	
DVD Control	Ext	x	x	x	x	Ext	Ext		
Customizable Display	CD-R	CD-R	CD-R						
Detachable Face Security™	x	x	x	x	x	x	x	x	x
Flap Face	Motorized	Auto Slide	Auto Slide	x	x	x			
Organic EL Display	Multi-Color	Multi-Color	Blue	Blue	Blue				
LCD Display with LED Backlight							Multi-Color	Multi-Color	Multi-Color
Spectrum Analyzer	x	x	Level Ind.	Level Ind.	Level Ind.				
Soft-Key Operation	x	x							
Remote Control	10-key	10-key	10-key	10-key	Card	Card	Card		
Rotary Volume Control	x	x	Rotary Commander	Rotary Commander	Pop-up	Pop-up	x	x	
Wired Remote Input	x	x	x	x	x	x	x	x	
Display Output	x	x	x	x	x	x	x		
Cellular Mute	x	x	x	x	x				
Face Case (Included)	x	x	x	x					
Warranty	1 Year	1 Year	1 Year	1 Year	1 Year	1 Year	1 Year	1 Year	1 Year

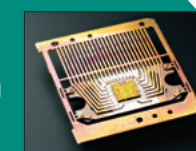
\*1 Burr-Brown  
 \*2 iTunes® AAC Playback: AAC player can decode only AAC files ripped and encoded using iTunes®; they cannot decode AAC DRM files downloaded from iTunes music store®.  
 \*3 AAC: AAC is a short for Advanced Audio Coding and refers to audio compression technology standard used with MPEG 4.  
 \*4 iPod is for legal or rightholder-authorized copying only. Don't steal music. iPod and iTunes are trademarks of Apple Computer, Inc., registered in the U.S. and other countries.

High Performance Digital Supertuner®



MOSFET50

MOSFET 50



Pioneer's Supertuner® has long set the standard for tuners and Supertuner® III D™ continues the proud lineage. Digital processing works with analog technology to reduce distortion and improve signal-to-noise ratio, stereo separation and sensitivity. In areas where reception is weak, it automatically adjusts to boost the signal and reduce multi-path noise caused by tall buildings. A digital filter achieves high selectivity in career frequency areas, while an analog block works to supreme advantage where reception is strong. Supertuner® III D™, the legend lives on.

In recent years, MOSFET has become the buzzword of the car electronics industry. And for good reasons. It's a highly efficient way to power your sound system and even drives a subwoofer. MOSFET50 by Pioneer is the real thing. It may not look like much, but this little chip pumps a solid 50 watts to all four speaker channels. Of course, its true beauty is its musical clarity. With MOSFET50, sound is far more detailed than what the average stereo pumps out with a bipolar circuit.

FH-P4200MP

- SUPER TUNER III
- MP3
- DOLBY BNR
- WMA
- BDS DIGITAL
- DSP CDTEXT
- EEQ
- MOSFET 50
- CD CONTROL
- SAT READY



**NEW FOR 2005**  
 Double-DIN CD/Cassette Receiver with LCD Display, iPod® Adapter Ready, iTunes® AAC Playback, MP3/WMA Playback, BMX Digital Compression, MOSFET50, XM-Ready, SIRIUS-Ready, Supertuner® III D™, Rotary Volume Control, IP-Bus System Control and Slim Remote

DEH-P77DH

- SUPER TUNER III
- CD-R
- EEQ
- Hi-VOLT
- MOSFET 45
- DFS ALARM
- SAT READY
- CD CONTROL



GM/Chrysler-Fit CD Receiver with Multi-Color LCD Display, iPod® Adapter Ready, EEQ™, MOSFET45, XM-Ready, SIRIUS-Ready, Supertuner® III™, IP-Bus System Control, Slim Remote, DFS™ Alarm, Pop-up Rotary Volume Control, Detachable Face Security™, and Hi-Volt Preouts

- SUPER TUNER III
- CD-R
- EEQ
- MOSFET 45
- SAT READY
- CD CONTROL



GM/Chrysler-Fit CD Receiver with Multi-Color LCD Display, iPod® Adapter Ready, EEQ™, MOSFET45, XM-Ready, SIRIUS-Ready, Supertuner® III™, IP-Bus System Control, Pop-up Rotary Volume Control, and Detachable Face Security™

- EEQ
- 45Wx4
- XM READY
- SUPER TUNER
- CD CONTROL
- REMOVABLE FACE SECURITY



Full-Logic Cassette Receiver with Multi-Color Display, EEQ™, 45Wx4-Channel High Power, XM-Ready, Supertuner®, IP-Bus System Control, and Detachable Face Security™

KEH-P2030

- 40Wx4
- XM READY
- SUPER TUNER
- CD CONTROL
- REMOVABLE FACE SECURITY



Cassette Receiver with 40Wx4-Channel High Power, XM-Ready, Supertuner®, IP-Bus System Control, and Detachable Face Security™

	FH-P4200MP	DEH-P77DH	DEH-P47DH	KEH-P4200	KEH-P2030
<b>SUPERTUNER SECTION</b>					
Supertuner	III D	III	III	x	x
XM Radio Ready	x	x	x	x	x
SIRIUS-Ready	x	x	x	x	x
24-Station/6-Button (18FM/6AM) Presets	x	x	x	x	x
BSM (Best Stations Memory)	x	x	x	x	x
<b>CD PLAYER/CD FUNCTIONS</b>					
1-bit D/A Converter	x	x	x		
CD-R/CD-RW Compatible	x	x (CD-R)	x (CD-R)		
MP3 Compatible	x				
WMA (Windows Media® Audio)	x				
Wave (.wav) Compatible	x				
iTunes® AAC** Playback	x				
AGC (Automatic Gain Control)	x	x	x		
Disc Title Memory	x	x	x		
Disc List		x	x		
CD Text	x	x (MCD)	x (MCD)		
IP-BUS (Changer Control)	x	x	x	x	x
BMX Digital Compression (SCD)	x				
DBE (MCD)	x				
<b>CASSETTE PLAYER</b>					
Auto Reverse	x			x	x
Full Logic Control	x			x	
SHC Dual-Groove Tape Head	x			x	x
Dolby® B Noise Reduction	x				
Music Search & Repeat	x				
Radio Intercept				x	x
<b>AUDIO SECTION</b>					
MOSFET50 (50Wx4-Channel High Power)	x				
MOSFET45 (45Wx4-Channel High Power)		x	x		
45Wx4-Channel High Power				x	
40Wx4-Channel High Power					x
BTB (Bass/Treble Booster)					x
Equalizer	9-Band	3-Band Parametric	3-Band Parametric	3-Band	
Selectable FIE (Front Image Enhancer)		x	x	x	
Source Level Adjuster (SLA)	x				
DSP	x				
BBE	x				
Loudness	x	Variable	Variable	3 Mode	2 Mode
HPF Crossover	x	x	x		
Selectable Fader	x			x	x
Subwoofer (LPF) Crossover	x	x	x		
Hi-Volt RCA Preouts		3 (4V)			
RCA Preouts	2 (2V)		1 (2V)	1 (2V)	1 (2V)
<b>GENERAL</b>					
iPod® Adapter Ready***	x	x	x		
LCD Display with LED Backlight	x	Multi-Color	Multi-Color	Multi-Color	
Spectrum Analyzer	x				
Detachable Face Security™		x	x	x	x
Flap Face				x	
Face Case (Included)				x	
Remote Control	Slim	Slim			
Rotary Volume Control	x	Pop-up	Pop-up		
Cellular Mute	x	x	x		
Warranty	1 Year	1 Year	1 Year	1 Year	1 Year

\* iTunes® AAC Playback: AAC player can decode only AAC files ripped and encoded using iTunes®; they cannot decode AAC DRM files downloaded from iTunes music store®.  
 \*\* AAC: AAC is a short for Advanced Audio Coding and refers to audio compression technology standard used with MPEG 4.  
 \*\*\* iPod is for legal or rightholder-authorized copying only. Don't steal music. iPod and iTunes are trademarks of Apple Computer, Inc., registered in the U.S. and other countries.

DEQ-9200



Universal Add-On Digital Signal Processor with Auto-EQ, Digital Crossover Network, Legato Link™ Conversion, and Detachable Face Security™

- FEATURES:**
- 3-Band Parametric Equalizer: Presets (6 Factory, 4 User), Nuance Control
  - Auto-EQ: 3 Curves (Dynamic/Natural/Mild), Omni-Directional Microphone (Included)
  - 8x Oversampling 1-Bit Legato Link™ D/A Converter
  - Multi-Color Display with EL Backlighting
  - RCA Input
  - RCA Outputs (x3 Pair) (Front/Rear + Subwoofer or High/Mid/Low)
  - DSP Mode: 5-Mode Digital Sound Field Control (SFC), Listening Position Selector, Front & Rear HPF, Subwoofer LPF
  - Pro Mode: Time Alignment, Listening Position Selector, High-HPF, Mid-LPF, Mid-HPF, Low-LPF
  - Dimensions (WxHxD): 7-3/8" x 2-1/4" x 1-1/4"



DEQ-7600



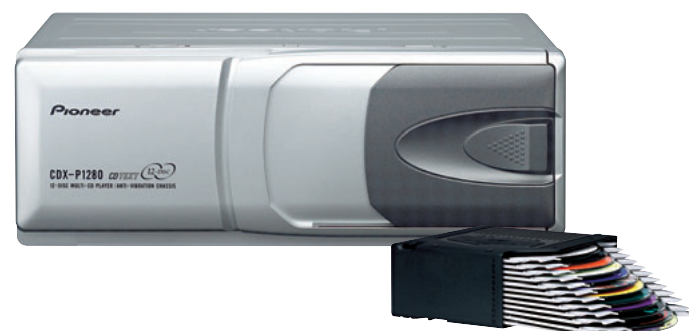
Universal Add-On Digital Processing Equalizer with DSP and Subwoofer Output

- FEATURES:**
- Electronic 15-Band Digital Graphic Equalizer: Presets (5 Factory, 3 User), Nuance Control, 15 Center Frequencies, ±12dB Gain
  - 5-Mode Digital Sound Field Control (SFC)
  - Listening Position Selector
  - Hi-Bit Legato Link™ Digital Processing with 20-Bit Accuracy
  - RCA Input
  - RCA Outputs (x3 Pair) (Front/Rear + Subwoofer)
  - Sub-Out Crossover (50/80/125Hz, -18dB/Oct.)
  - Multi-Color EL Display
  - Remote Control Sensor
  - Dimensions (WxHxD): 7" x 2" x 5-1/4"



**CDX-P1280**

12-Disc IP-Bus Multi-CD Player



Ready to step up to a 12-disc CD changer? The CDX-P1280 works with a Pioneer system IP-Bus headunit and can be mounted vertically or horizontally and has CD Text capability.



**CDX-P680**

6-Disc IP-Bus Multi-CD Player



This 6-disc changer is compatible with Pioneer's IP-Bus headunits. Disc title memory allows you to program the names of up to 100 CDs. Mount it anywhere and control it via your headunit.



**CDX-FM1287**

Universal FM-Modulated 12-Disc Multi-CD System with Wireless Remote Control



Want a 12-disc changer that goes with your factory stereo? No problem. The CDX-FM1287 uses your FM signal to reproduce CD audio, giving you hours of CD, CD-R, and CD-RW play. It mounts easily, and includes a remote and control/display unit.



**CDX-FM687**

Universal FM-Modulated 6-Disc Multi-CD System with Wireless Remote Control



Yes, you can add a CD changer onto your factory stereo. The CDX-FM687 works off an FM signal. Load in six of your favorite discs and control everything with a wireless remote and a control/display unit.



**CDS-P4000**

Single-Disc IP-Bus Add-On CD Player with LCD Level Indicator



If all you need is a single disc player to add onto your Pioneer IP-Bus headunit or AV receiver, this is it. It seamlessly connects to your system and provides an illuminated LCD display.



	CDX-P1280	CDX-P680	CDS-P4000	CDX-FM1287	CDX-FM687
<b>CD PLAYER</b>					
Disc Capacity	12	6	1	12	6
AGC (Automatic Gain Control)	x	x	x	x	x
CD-R/CD-RW Compatible	x	x	x	x	x
1-bit D/A Converter	x	x	x	x	x
8x Oversampling Filter	x	x	x	x	x
"Double-Floating" Anti-Vibration System	x	x	x	x	x
CD-Text Decoder	x	x		x	x
Disc Title Memory	100 Discs	100 Discs		100 Discs	100 Discs
ITS Memory	100 Discs	100 Discs		100 Discs	100 Discs
IP-Bus Control Output	x	x		x	x
IP-Bus Control Input (Pass-thru)			x		
Built-in FM Modulator				x	x
Selectable FM Frequencies				12	12
<b>GENERAL</b>					
Multiple Mounting Angles	x	x	In-Dash	x	x
Wired Control/Display				x	x
Wireless Remote				Slim	Slim
Magazine	JD1212S	JD612V		JD1212S	JD612V
Warranty	1 Year	1 Year	1 Year	1 Year	1 Year

**GM-7100M**

NEW FOR 2005



RCA Input

**800W MAX.**

Amplifier Power Standard  
CEA  
CEA-2006 Compliant

250 Watts x 1, at 4Ω <= 1% THD+N  
360 Watts x 1, at 2Ω <= 1% THD+N, at 100Hz  
80 dBA Signal-to-Noise Ratio  
(Reference: 1 Watt Output)

Get harder-hitting bass with 800 watts of high power at a 2-ohm load. This amp delivers powerful sound with a low distortion rating of less than 0.03%.

**GM-5100T**

NEW FOR 2005



**760W MAX.**

Amplifier Power Standard  
CEA  
CEA-2006 Compliant

125 Watts x 2, at 4Ω <= 1% THD+N  
380 Watts x 1, at 4Ω BRIDGE <= 1% THD+N  
75 dBA Signal-to-Noise Ratio  
(Reference: 1 Watt Output)

Give your system clean, high power. This amp has two channels to enhance your front/rear sound. Bridge the channels together to drive a power-hungry subwoofer for harder-hitting bass.

**GM-D510M**

1000W MAX.



**CLASS D AMPLIFIER**  
Big, efficient power. Operating in Class D, the space-saving GM-D510M gives you massive power with less heat – and less distortion—than with a conventional amp.

Push an explosive 1000 watts of power into a hard-driving 2-ohm load. Class D design means high efficiency, cool operation and high decibel sound without taking too much space in your trunk—perfect for driving a sub or two.

**GM-6100F**

NEW FOR 2005



RCA Input and Output

**600W MAX.**

Amplifier Power Standard  
CEA  
CEA-2006 Compliant

60 Watts x 4, at 4Ω <= 1% THD+N  
150 Watts x 2, at 4Ω BRIDGE <= 1% THD+N  
80 dBA Signal-to-Noise Ratio  
(Reference: 1 Watt Output)

Upgrade your in-car audio system with 600 watts of high power and variable LPF and HPF. Dynamic power can be yours whether the amp is configured for 2- or 4-channel.

**GM-3100T**

NEW FOR 2005



**300W MAX.**

Amplifier Power Standard  
CEA  
CEA-2006 Compliant

60 Watts x 2, at 4Ω <= 1% THD+N  
150 Watts x 1, at 4Ω BRIDGE <= 1% THD+N  
80 dBA Signal-to-Noise Ratio  
(Reference: 1 Watt Output)

Add power with clarity to your system and experience the excitement of an on-board live performance. It's a smart, simple solution to improving your in-car sound.

	GM-7100M	GM-6100F	GM-5100T	GM-3100T	GM-D510M
<b>SPECIFICATIONS</b>					
Peak Music Power	500W (4Ω) 800W (2Ω)	120W x 4 (4Ω) 300W x 2 (Bridge, 4Ω)	250W x 2 (4Ω) 760W x 1 (Bridge)	120W x 2 (4Ω) 300W x 1 (Bridge)	600W (4Ω) 1000W (2Ω)
Number of Channels	1	4	2	2	1
Continuous Power (4Ω)	250W x 1	60W x 4	125W x 2	60W x 2	300W x 1
Continuous Power (2Ω)	360W x 1	75W x 4	190W x 2	75W x 2	500W x 1
Continuous Power Bridged (4Ω)		150W x 2	380W x 1	150W x 1	
Frequency Response (0, -1dB)	10Hz - 240Hz (+0dB, -3dB)	10Hz - 50kHz	10Hz-50kHz	10Hz-50kHz	5Hz - 240Hz (+0.5dB, -3dB)
Total Harmonic Distortion (1kHz, 4Ω)	<0.03% (120Hz)	<0.01%	<0.015%	<0.008%	<0.1% (100Hz, 4Ω)
Signal-to-Noise Ratio (IHF-A Weighted, at 1kHz)	>100dB	>95dB	>95dB	>100dB	>100dB
Dimensions (WxHxD)	11-13/16" x 2-3/8" x 12-7/8"	11-13/16" x 2-3/8" x 12-7/8"	11-13/16" x 2-3/8" x 12-7/8"	11-13/16" x 2-3/8" x 7-5/16"	10-9/16" x 2-1/16" x 9-13/16"
<b>FEATURES</b>					
Bridgeable 1/2/3-Channel Capability			X	X	
Bridgeable 2/3/4-Channel Capability		X			
Class D Amplifier					X
PWM Regulated MOSFET Power Supply	X	X	X		X
DMOSFET Output Section					X
Balanced Isolator Input Circuit	X	X	X	X	
Oversized Screw-Type Power/Ground Terminals	X	X	X	X	X
RCA Inputs	2 Ch	4 Ch	2 Ch	2 Ch	2 Ch
RCA Outputs (Pass Thru)			X		
Speaker Level Input	X	X	X	X	
Screw-Type Speaker Terminals	X	X	X	X	X
Hi-Volt Input Level Control (200mV-6.5V)	X	X	X	X	
Variable Crossover (40-240Hz, -24dB/Oct. [LPF])					X
Variable LPF (40-240Hz, -12dB/Oct.)	X				
Selectable Crossover (80Hz, -12dB/Oct.)		X			
Bass Boost (50Hz, 0/6/12dB)		X		X	
Selectable LPF (80Hz, -12dB/Oct.)				X	X



TS-D691R

NEW FOR 2005

6" X 9" REV 2-Way Speaker

DuPont™ KEVLAR

350W MAX.



FEATURES:

- Dual-Layer KEVLAR® Brand Fiber with Rigilite™ IMPP™ Composite Cone
- Butyl Rubber Surround for Smoother Response
- Glass-Imide Voice Coil Bobbin
- Conex Damper
- 1-1/8" Lightweight Soft Dome Tweeter with Neodymium Magnet and Rear Chamber
- Newly-Designed Wave Guides for Even Better Dispersion Control
- Built-in LC Network (-12dB/Oct. LPF & HPF)
- Newly-Designed Full-Depth Basket Boasting Much Higher Compressive Strength and Better Damping

SPECIFICATIONS:

- 350 Watts Max. Music Power (80 Watts Nominal)
- Frequency Response: 22Hz - 32kHz
- Sensitivity: 91dB
- 4Ω Rated

TS-D681R

NEW FOR 2005

6" X 8" REV 2-Way Speaker

DuPont™ KEVLAR

260W MAX.



FEATURES:

- Dual-Layer KEVLAR® Brand Fiber with Rigilite™ IMPP™ Composite Cone
- Butyl Rubber Surround for Smoother Response
- Glass-Imide Voice Coil Bobbin
- Conex Damper
- 1-1/8" Lightweight Soft Dome Tweeter with Neodymium Magnet and Rear Chamber
- Newly-Designed Wave Guides for Even Better Dispersion Control
- Built-in LC Network (-12dB/Oct. LPF & HPF)
- Newly-Designed Basket Boasting Much Higher Compressive Strength and Better Damping

SPECIFICATIONS:

- 260 Watts Max. Music Power (60 Watts Nominal)
- Frequency Response: 27Hz - 32kHz
- Sensitivity: 91dB
- 4Ω Rated

TS-D161R

NEW FOR 2005

6-1/2" REV 2-Way Speaker

DuPont™ KEVLAR

260W MAX.



FEATURES:

- Dual-Layer KEVLAR® Brand Fiber with Rigilite™ IMPP™ Composite Cone
- Butyl Rubber Surround for Smoother Response
- Glass-Imide Voice Coil Bobbin
- Conex Damper
- 1-1/8" Lightweight Soft Dome Tweeter with Neodymium Magnet and Rear Chamber
- Newly-Designed Wave Guides for Even Better Dispersion Control
- Built-in LC Network (-12dB/Oct. LPF & HPF)
- Newly-Designed Basket Boasting Much Higher Compressive Strength and Better Damping

SPECIFICATIONS:

- 260 Watts Max. Music Power (60 Watts Nominal)
- Frequency Response: 27Hz - 32kHz
- Sensitivity: 90dB
- 4Ω Rated

TS-C160R

6-1/2" REV Component Speaker Package

VCCS™ DuPont™ KEVLAR

250W MAX.



FEATURES:

- 6-1/2" KEVLAR® Brand Fiber Composite Cone Woofer
- Butyl Rubber Surround for Smoother Response
- CCAW (Copper-Clad Aluminum Wire) Voice Coil
- Glass-Imide/Copper Voice Coil Bobbin
- Conex Damper
- VCCS™ (Voice Coil Cooling System) with Aluminum Dust Cap
- Projected Pole Yoke
- 1" Lightweight Soft Dome Tweeter with Magnetic Fluid and Neodymium Magnet
- Surface (Angled) or Flush Swivel Mounting
- Outboard Crossover Network Included with -12dB/Oct. HPF and -12dB/Oct. LPF, Tweeter Protection Circuit and Tweeter Level Adjustment (0, -3dB)
- Aluminum Die-Cast Full-Depth Basket for Rich Bass Response
- Gold-Plated Binding Posts
- Fits GM Oversized 6-1/2" Applications

SPECIFICATIONS:

- 250 Watts Max. Music Power (60 Watts Nominal)
- Frequency Response: 25Hz - 32kHz
- Sensitivity: 90dB
- 4Ω Rated

5-1/4" REV Component Speaker Package

VCCS™ DuPont™ KEVLAR

180W MAX.



FEATURES:

- 5-1/4" KEVLAR® Brand Fiber Composite Cone Woofer
- Butyl Rubber Surround for Smoother Response
- Glass-Imide/Copper Voice Coil Bobbin
- Conex Damper
- VCCS™ (Voice Coil Cooling System) with Aluminum Dust Cap
- Projected Pole Yoke
- 1" Lightweight Soft Dome Tweeter with Magnetic Fluid and Neodymium Magnet
- Surface (Angled) or Flush Swivel Mounting
- Outboard Crossover Network Included with -12dB/Oct. HPF and -12dB/Oct. LPF, Tweeter Protection Circuit and Tweeter Level Adjustment (0, -3dB)
- Aluminum Die-Cast Full-Depth Basket for Rich Bass Response
- Gold-Plated Binding Posts

SPECIFICATIONS:

- 180 Watts Max. Music Power (40 Watts Nominal)
- Frequency Response: 35Hz - 32kHz
- Sensitivity: 90dB
- 4Ω Rated

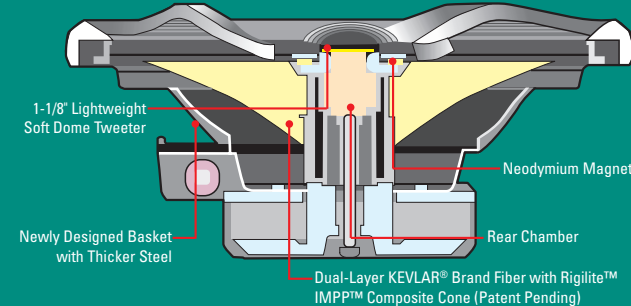
REV Series Evolution — for Even More Excitement

The new REV (TS-D) Series speakers boost the impact of sound with high power and smooth, accurate sound reproduction. The composite IMPP cones now feature 2nd generation KEVLAR® Brand Fiber composite cone with ceramic coating, which enables high spec in sound-propagation speed, internal loss, and rigidity. The result is more detailed, high-fidelity sound with lower resonance and better transient response in low and mid ranges.

And the true beauty of REV Series speakers is the science built into their soft-dome tweeters. Ordinary speaker woofers play frequencies that extend into the higher ranges. REV Series speakers direct those crisp sounds exclusively to the tweeters, thanks to a diaphragm and rear chamber that controls damping and improves imaging and staging. The domes themselves are made of newly-applied lightweight material, and the gentle shape of the domes improves sound by preventing sharp, top-end peaks.

Also contributing to better sound is the newly designed basket with thicker steel — more than 1.4 times thicker than previous models — which results in more than three-times higher compressive strength and better damping.

Cross Section of REV Speaker

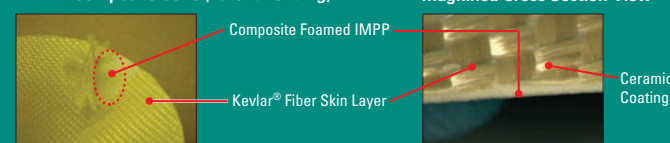


Wave Guides

To help control the dips in frequency response, REV Series tweeters rely on an innovation called wave guides. They affect the dispersion patterns of sound waves and provide a sound image that is clear and focused. Wave guides also enhance localization, depth in soundstage and generate a wider sweet spot than normal tweeters. The new REV Series comes with an updated version of wave guides, which boasts even higher performance.

Dual-Layer KEVLAR® Brand Fiber with Rigilite™ IMPP™ Composite Cone (Patent Pending)

Magnified Cross Section View



**TS-A6991R** **NEW FOR 2005**

**6" x 9" 5-Way Speaker** **460W MAX.**



- FEATURES:**
- Composite IMPP Cone Woofer Using Interlaced Dual Aramid Fiber
  - Butyl Rubber Surround for Smoother Response
  - Glass-Imide Voice Coil Bobbin
  - Latex-Treated Conex Damper
  - 2-1/4" Lightweight Balanced Dome Midrange with Magnetic Fluid
  - 1-1/2" Film Cone Tweeter with Neodymium Magnet
  - 3/4" Dome Supertweeter
  - Full-Depth Basket for Rich Bass Response

**TS-A6981R** **NEW FOR 2005**

**6" x 9" 4-Way Speaker** **420W MAX.**



- FEATURES:**
- Composite IMPP Cone Woofer Using Interlaced Dual Aramid Fiber
  - Butyl Rubber Surround for Smoother Response
  - Glass-Imide Voice Coil Bobbin
  - Latex-Treated Conex Damper
  - 2-1/4" Lightweight Balanced Dome Midrange with Magnetic Fluid
  - 1-1/2" Film Cone Tweeter
  - 3/4" Dome Supertweeter
  - Full-Depth Basket for Rich Bass Response

**TS-A6971R** **NEW FOR 2005**

**6" x 9" 3-Way Speaker** **300W MAX.**



- FEATURES:**
- Composite IMPP Cone Woofer Using Interlaced Dual Aramid Fiber
  - Glass-Imide Voice Coil Bobbin
  - 2-1/4" Lightweight Balanced Dome Midrange with Magnetic Fluid
  - 3/4" Cone Tweeter
  - Shallow Basket for Increased Installation Versatility

**TS-A6961R** **NEW FOR 2005**

**6" x 9" 3-Way Speaker** **230W MAX.**



- FEATURES:**
- Composite IMPP Cone Woofer Using Interlaced Dual Aramid Fiber
  - Glass-Imide Voice Coil Bobbin
  - 2-1/4" Film Cone Midrange
  - 3/4" Cone Tweeter
  - Shallow Basket for Increased Installation Versatility

**TS-A6880R**

**6" x 8" Custom-Fit 4-Way Speaker** **240W MAX.**



- FEATURES:**
- Composite IMPP Cone Woofer Using Interlaced Aramid Fiber
  - Butyl Rubber Surround for Smoother Response
  - High-Energy Strontium Magnet (Woofer)
  - Glass-Imide Voice Coil Bobbin
  - Latex-Treated Conex Damper
  - 1-5/8" Foamed PPC (Pearl Poly-Carbon) Balanced Dome Midrange with Magnetic Fluid and Strontium Magnet
  - 5/8" Dome Tweeter
  - 3/8" Dome Supertweeter
  - Custom-Fit for Ford and Mazda Vehicles

**TS-A6870R**

**6" x 8" Custom-Fit 3-Way Speaker** **220W MAX.**



- FEATURES:**
- Composite IMPP Cone Woofer Using Interlaced Aramid Fiber
  - Butyl Rubber Surround for Smoother Response
  - High-Energy Strontium Magnet (Woofer)
  - Glass-Imide Voice Coil Bobbin
  - Latex-Treated Conex Damper
  - 1-5/8" Foamed PPC (Pearl Poly-Carbon) Balanced Dome Midrange with Magnetic Fluid and Strontium Magnet
  - 3/8" Dome Tweeter
  - Custom-Fit for Ford and Mazda Vehicles

**TS-G6840R**

**6" x 8" Custom-Fit 2-Way Speaker** **150W MAX.**



- FEATURES:**
- IMPP Composite Cone Woofer
  - High-Energy Strontium Magnet
  - Kapton Voice Coil Bobbin
  - Conex Damper
  - 1-1/2" Film Cone Tweeter
  - New Custom-Fit for Ford and Mazda Vehicles

**TS-A5713**

**5" x 7" Custom-Fit 2-Way Speaker** **120W MAX.**



- FEATURES:**
- Foamed IMPP Composite Cone Woofer
  - Urethane Surround for High Efficiency
  - High-Energy Strontium Magnet
  - 1-5/8" Cone Tweeter
  - Custom-designed Speaker Basket Fits Ford, Chrysler and Toyota (6" x 8" or 5" x 7") Factory Provisions

**New Materials, New Shape — Better Sound**

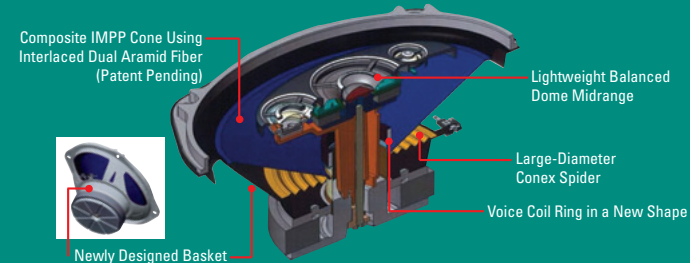
The new TS-A series speakers feature a composite IMPP cone woofer that uses two kinds of interlaced aramid fiber for even higher sound quality — one for sufficient volume in low frequency levels and the other for creating a smooth, natural, stereoscopic sound field with minute details. Use of the two materials also increases the rigidity and durability of the woofer, and the voice coil ring with reduced thickness permits better linearity.

The lightweight balanced dome midrange enables improved sensitivity and better transient. Its overall shape has been optimized through repeated simulations. The result is reduced sound-wave interference between the dome and the surrounding area.

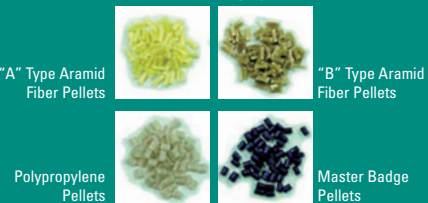
**New Basket Design**

Behind the TS-A series speakers' cool-looking face — featuring metallic sub grill and new spoke grills — is the newly designed basket, which ensures higher sound quality and easy installation on a wider variety of vehicles. The new basket design boasts higher compressive strength, while the wider installation coverage is enabled by smaller cutout holes that maintain the vibration area.

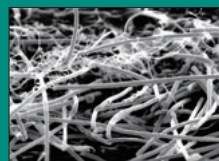
**Cross Section of TS-A6991R Speaker**



The IMPP cones of new TS-A series are made from two types of aramid fibers, polypropylene, and master badge pellets.



Microscopic Cross Section View



The new cone boasts even higher rigidity and durability.

**TS-A1780R**

**6-3/4" 4-Way Speaker** **240W MAX.**



- FEATURES:**
- Composite IMPP Cone Woofer Using Interlaced Aramid Fiber
  - Butyl Rubber Surround for Smoother Response
  - High-Energy Strontium Magnet (Woofer)
  - Glass-Imide Voice Coil Bobbin
  - Conex Damper
  - 1-5/8" Foamed PPC (Pearl Poly-Carbon) Balanced Dome Midrange with Magnetic Fluid and Strontium Magnet
  - 3/8" Dome Tweeter
  - 3/8" Dome Supertweeter

**6" x 8" Perfect Fit Speakers**

There are a few things in life we'll never understand. Like why do stereo companies keep trying to force people to put 5" x 7" speakers in 6" x 8" holes? It doesn't look or sound right. That's why we've researched exactly what dimension speakers would work best with what cars. If it doesn't fit perfect, it's not gonna sound perfect. Trust us on this.



**TS-A1681R** NEW FOR 2005

**6-1/2" 4-Way Speaker** **260W MAX.**



- FEATURES:**
- Composite IMPP Cone Woofer Using Interlaced Dual Aramid Fiber
  - Butyl Rubber Surround for Smoother Response
  - Glass-Imide Voice Coil Bobbin
  - Latex-Treated Conex Damper
  - 1-5/8" Lightweight Balanced Dome Midrange with Magnetic Fluid
  - 5/8" Dome Tweeter
  - 3/8" Dome Supertweeter
  - Full-Depth Basket for Rich Bass Response

**TS-A1671R** NEW FOR 2005

**6-1/2" 3-Way Speaker** **220W MAX.**



- FEATURES:**
- Composite IMPP Cone Woofer Using Interlaced Dual Aramid Fiber
  - Butyl Rubber Surround for Smoother Response
  - Glass-Imide Voice Coil Bobbin
  - Latex-Treated Conex Damper
  - 1-5/8" Lightweight Balanced Dome Midrange with Magnetic Fluid and Neodymium Magnet
  - 3/8" Dome Tweeter
  - Shallow Mounting Depth for Increased Installation Versatility

**TS-A4103**

**4" x 10" 2-Way Speaker** **120W MAX.**



- FEATURES:**
- IMPP Composite Cone Woofer
  - Urethane Surround for High Efficiency
  - High-Energy Strontium Magnet (Woofer/Tweeter)
  - Aluminum Voice Coil Bobbin
  - Conex Damper
  - 1-5/8" Cone Tweeter

**TS-P462**

**4" x 6" 2-Way Component Plate Speaker** **150W MAX.**



- FEATURES:**
- 4" Foamed IMPP Composite Cone
  - Butyl Rubber Surround for Smoother Response
  - High-Energy Strontium Magnet (Woofer)
  - Latex-Treated Conex Damper
  - Kapton Voice Coil Bobbin
  - 1" Soft-Dome Tweeter with Neodymium Magnet
  - Built-In Passive Crossover (-6dB/Oct. LPF, -12dB/Oct. HPF)

**TS-A4670R**

**4" x 6" 3-Way Speaker** **120W MAX.**



- FEATURES:**
- Composite IMPP Cone Using Interlaced Aramid Brand Fiber
  - High-Energy Strontium Magnet (Woofer)
  - Glass-Imide Voice Coil Bobbin
  - Conex Damper
  - 1-1/8" Foamed PPC (Pearl Poly-Carbon) Balanced Dome Midrange with Magnetic Fluid and Neodymium Magnet
  - 3/8" Film Dome Tweeter
  - Custom-Fit US/European Compatible Basket Design

**TS-G1640R**

**6-1/2" 2-Way Speaker** **160W MAX.**



- FEATURES:**
- IMPP Composite Cone Woofer
  - High-Energy Strontium Magnet (Woofer)
  - Kapton Voice Coil Bobbin
  - Conex Damper
  - CCAW (Copper-Clad Aluminum Wire) Voice Coil
  - 1-5/8" Film Cone Tweeter
  - 6-3/4" Compatibility (GM Tabs)

**TS-A1370R**

**5-1/4" 3-Way Speaker** **160W MAX.**



- FEATURES:**
- Composite IMPP Cone Woofer Using Interlaced Aramid Fiber
  - Butyl Rubber Surround for Smoother Response
  - High-Energy Strontium Magnet (Woofer)
  - Glass-Imide Voice Coil Bobbin
  - Conex Damper
  - 1-5/8" Foamed PPC (Pearl Poly-Carbon) Cone Midrange with Magnetic Fluid and Strontium Magnet
  - 3/8" Dome Tweeter

**TS-G4640R**

**4" x 6" 2-Way Speaker** **100W MAX.**



- FEATURES:**
- IMPP Composite Cone Woofer
  - High-Energy Strontium Magnet
  - Kapton Voice Coil Bobbin
  - Conex Damper
  - 1-3/8" Film Cone Tweeter
  - New Custom-Fit US/European Compatible Basket Design

**TS-A1057**

**4" 2-Way Speaker** **100W MAX.**



- FEATURES:**
- Foamed IMPP Composite Cone Woofer
  - High-Compliance Urethane Surround for High Efficiency
  - High-Energy Strontium Magnet (Woofer)
  - Glass-Imide Voice Coil Bobbin
  - Latex-Treated Conex Damper
  - 1" Foamed PPC (Pearl Poly-Carbon) Balanced Dome Tweeter with Neodymium Magnet and Magnetic Fluid
  - 4 & 2-Hole Compatibility with Removable Screw Holes

**TS-G1040R**

**4" 2-Way Speaker** **100W MAX.**



- FEATURES:**
- IMPP Composite Cone Woofer
  - Kapton Voice Coil Bobbin
  - Cotton/Conex Damper
  - 1-1/8" Film Cone Tweeter
  - 4 & 2-Hole Compatibility with Removable Screw Holes

**Foamed PPC**

PPC (or Pearl Poly-Carbon to us engineers) is a lightweight material that delivers high sensitivity, open sound character and smooth extended frequency response in tweeters. Not only that, but it has a high inner loss that reduces distortion. It's also blended with special carbon fiber for UV resistance and protection against the harsh environment of your car. Think of it as the perfect soundstage for the crisp highs you demand.

Speaker Specifications located on Page 30.

**TS-G1340R**

**5-1/4" 2-Way Speaker** **130W MAX.**



- FEATURES:**
- IMPP Composite Cone Woofer
  - High-Energy Strontium Magnet (Woofer)
  - Kapton Voice Coil Bobbin
  - Conex Damper
  - 1-3/8" Film Cone Tweeter
  - Shallow Mounting Depth for Wider Installation Coverage

**TS-A878**

**3-1/2" Dash-Mount 2-Way Speaker** **60W MAX.**



- FEATURES:**
- 3-1/2" Carbon-Graphite Blended IMPP Composite Cone Woofer
  - High-Energy Strontium Magnet (Woofer)
  - Glass-Imide Voice Coil Bobbin
  - Conex Damper
  - 1" PEI (Poly-Ether Imide) Dome Tweeter
  - Ultra-Slim Neodymium Magnet (Tweeter)
  - Custom-Fit for GM, Ford and Volkswagen Vehicles

**TS-877**

**3-1/2" Dash-Mount Dual-Cone Speaker** **40W MAX.**



- FEATURES:**
- 3-1/2" Cone Woofer
  - Custom-Fit for GM, Ford and Volkswagen Vehicles

**TS-X200**

**Surface-Mount 3-Way Speaker** **80W MAX.**



- FEATURES:**
- 4" IMPP Composite Cone Woofer
  - 2-1/4" Cone Midrange
  - 3/4" Horn Tweeter
  - Top-Mounting Bracket
  - Bass-Reflex Cabinet
- SPECIFICATIONS:**
- 80 Watts Max. Music Power (20 Watts Nominal)
  - Frequency Response: 65Hz - 30kHz
  - Sensitivity: 89dB
  - 4Ω Rated

**TS-X150**

**Surface-Mount 3-Way Speaker** **60W MAX.**



- FEATURES:**
- 5-1/4" IMPP Composite Cone Woofer
  - 1-1/8" Horn Midrange
  - 3/4" Horn Tweeter
  - Top-Mounting Bracket
- SPECIFICATIONS:**
- 60 Watts Max. Music Power (20 Watts Nominal)
  - Frequency Response: 75Hz - 20kHz
  - Sensitivity: 89dB
  - 4Ω Rated

Speaker Specifications located on Page 30.

