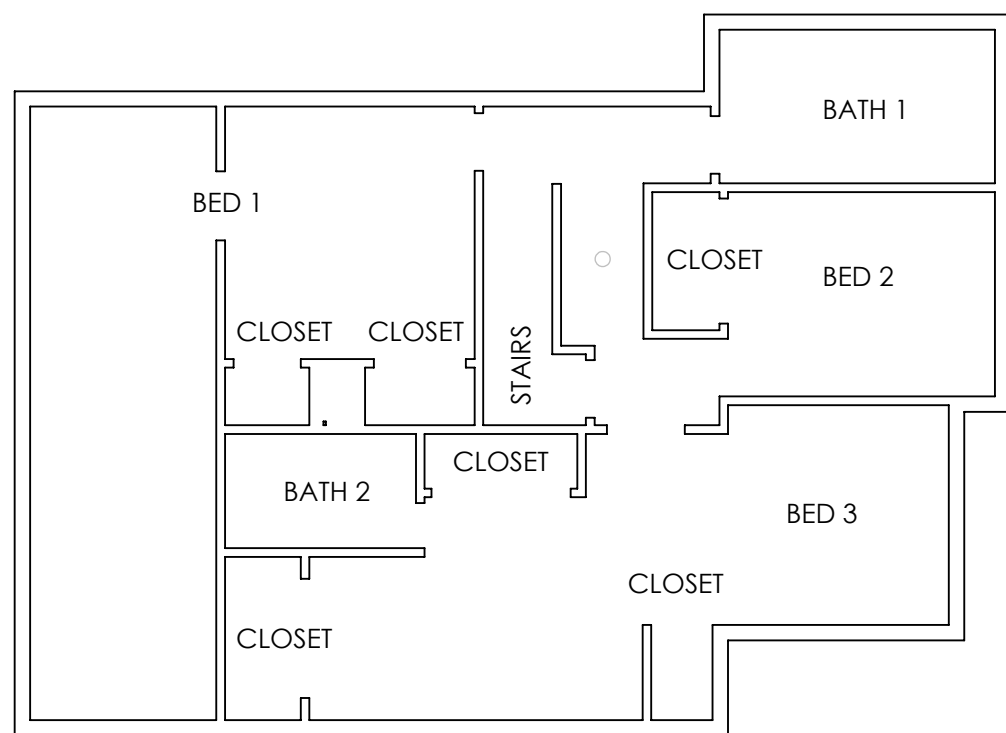


4

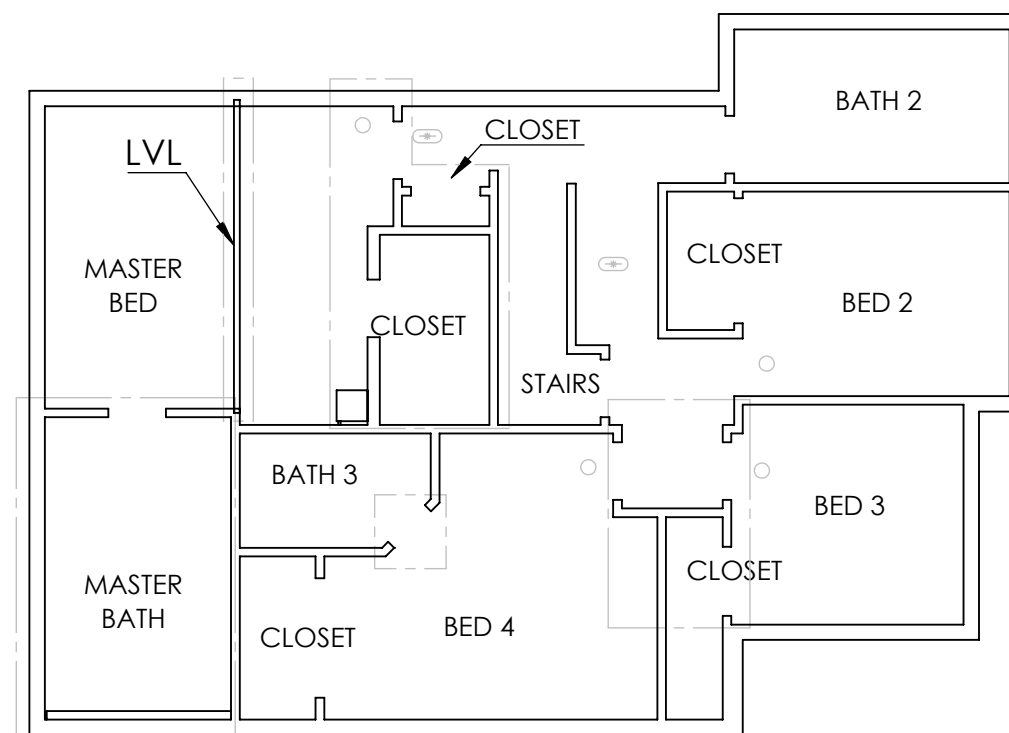
3

2

1



ORIGINAL LAYOUT



RENOVATED LAYOUT

NOTES:

- REFERENCE ENGINEERING PLANS FOR LVL DETAILS AND INSTALLATION

- ADDITIONAL CO & SMOKE DETECTORS IN BASEMENT & ATTIC

--- - DENOTES MODIFIED FEATURE

○ - SMOKE DETECTOR

⊞ - CO DETECTOR

CHANGES:

- LVL ADDED TO OPEN MASTER BEDROOM

- MASTER BATH ADDED

- CLOSETS MODIFIED IN MASTER BEDROOM

- SPLIT BEDROOM 3 INTO TWO BEDROOMS AND MODIFIED CLOSETS

- MODIFED BATH 3 DOORWAY

FOR REF:
5 FEET

4

3

2

1

PROPRIETARY AND CONFIDENTIAL

THE INFORMATION CONTAINED IN THIS DRAWING IS THE SOLE PROPERTY OF DINO KASVIKIS DESIGN. ANY REPRODUCTION IN PART OR AS A WHOLE WITHOUT THE WRITTEN PERMISSION OF DINO KASVIKIS DESIGN IS PROHIBITED.

UNLESS OTHERWISE SPECIFIED:

DIMENSIONS ARE IN INCHES
TOLERANCES:
FRACTIONAL \pm
ANGULAR: MACH \pm BEND \pm
TWO PLACE DECIMAL \pm
THREE PLACE DECIMAL \pm

INTERPRET GEOMETRIC
TOLERANCING PER:

MATERIAL

FINISH

DO NOT SCALE DRAWING

NAME DATE

DRAWN

DK

11.16.2017

CHECKED

ENG APPR.

MFG APPR.

Q.A.

COMMENTS:

NORTH



TITLE:

41 CLARKE RD
RENOVATION

SIZE

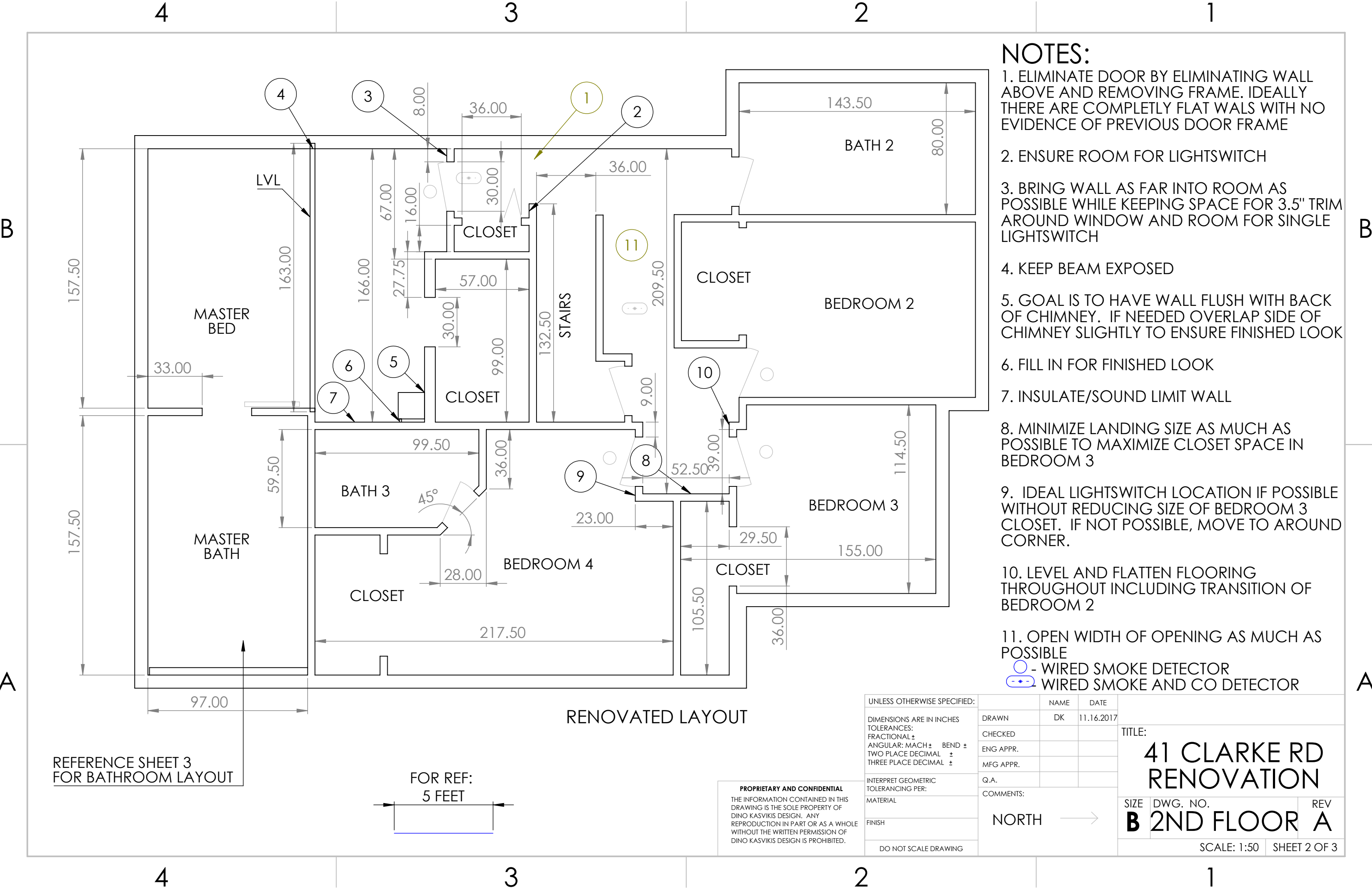
DWG. NO.

REV

B 2ND FLOOR **A**

SCALE: 1:50

SHEET 1 OF 3



- NOTES:**
- 1. ELIMINATE DOOR BY ELIMINATING WALL ABOVE AND REMOVING FRAME. IDEALLY THERE ARE COMPLETELY FLAT WALS WITH NO EVIDENCE OF PREVIOUS DOOR FRAME
 - 2. ENSURE ROOM FOR LIGHTSWITCH
 - 3. BRING WALL AS FAR INTO ROOM AS POSSIBLE WHILE KEEPING SPACE FOR 3.5" TRIM AROUND WINDOW AND ROOM FOR SINGLE LIGHTSWITCH
 - 4. KEEP BEAM EXPOSED
 - 5. GOAL IS TO HAVE WALL FLUSH WITH BACK OF CHIMNEY. IF NEEDED OVERLAP SIDE OF CHIMNEY SLIGHTLY TO ENSURE FINISHED LOOK
 - 6. FILL IN FOR FINISHED LOOK
 - 7. INSULATE/SOUND LIMIT WALL
 - 8. MINIMIZE LANDING SIZE AS MUCH AS POSSIBLE TO MAXIMIZE CLOSET SPACE IN BEDROOM 3
 - 9. IDEAL LIGHTSWITCH LOCATION IF POSSIBLE WITHOUT REDUCING SIZE OF BEDROOM 3 CLOSET. IF NOT POSSIBLE, MOVE TO AROUND CORNER.
 - 10. LEVEL AND FLATTEN FLOORING THROUGHOUT INCLUDING TRANSITION OF BEDROOM 2
 - 11. OPEN WIDTH OF OPENING AS MUCH AS POSSIBLE
- - WIRED SMOKE DETECTOR
- - ○ - WIRED SMOKE AND CO DETECTOR

RENOVATED LAYOUT

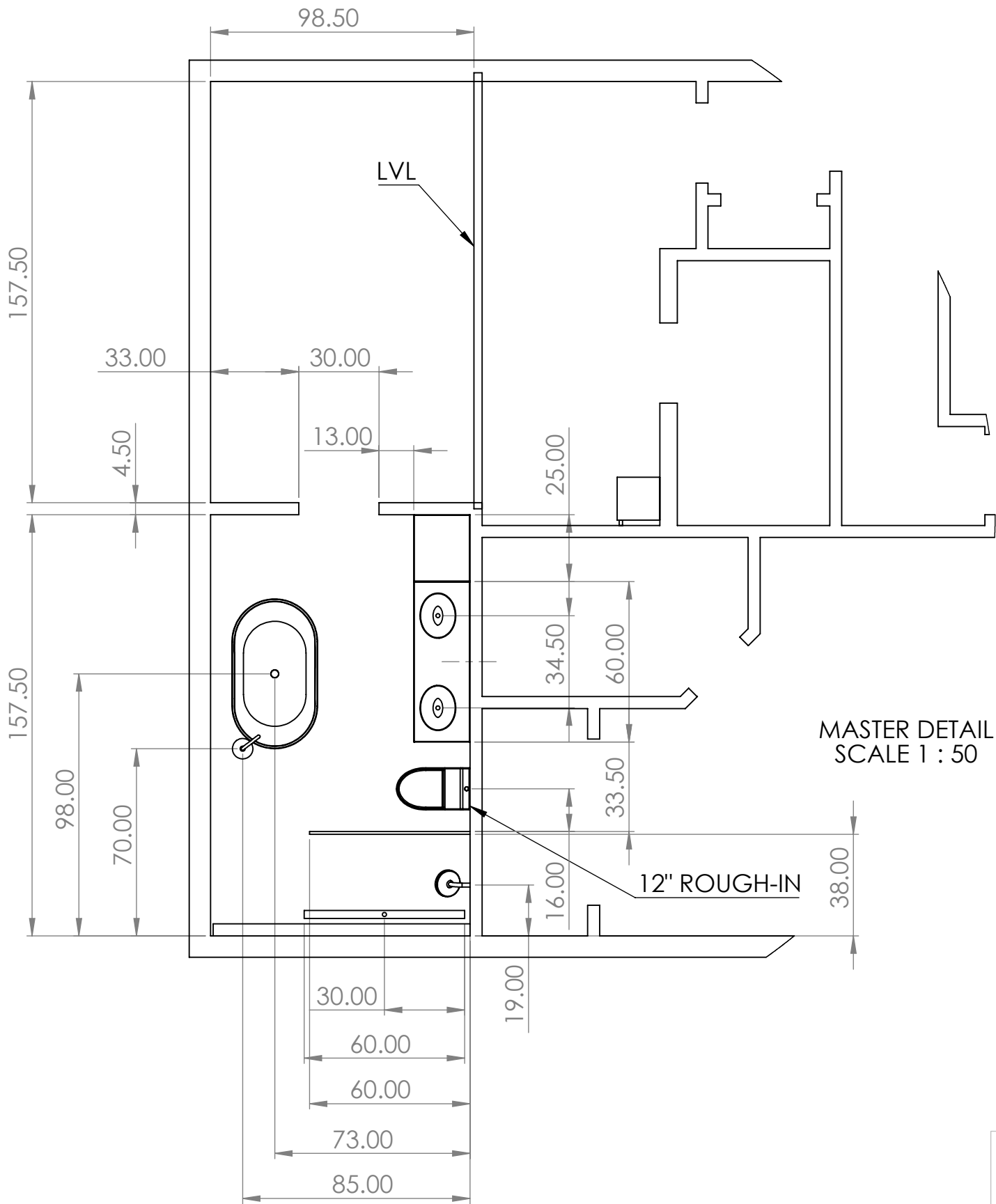
REFERENCE SHEET 3
FOR BATHROOM LAYOUT



PROPRIETARY AND CONFIDENTIAL
THE INFORMATION CONTAINED IN THIS DRAWING IS THE SOLE PROPERTY OF DINO KASVIKIS DESIGN. ANY REPRODUCTION IN PART OR AS A WHOLE WITHOUT THE WRITTEN PERMISSION OF DINO KASVIKIS DESIGN IS PROHIBITED.

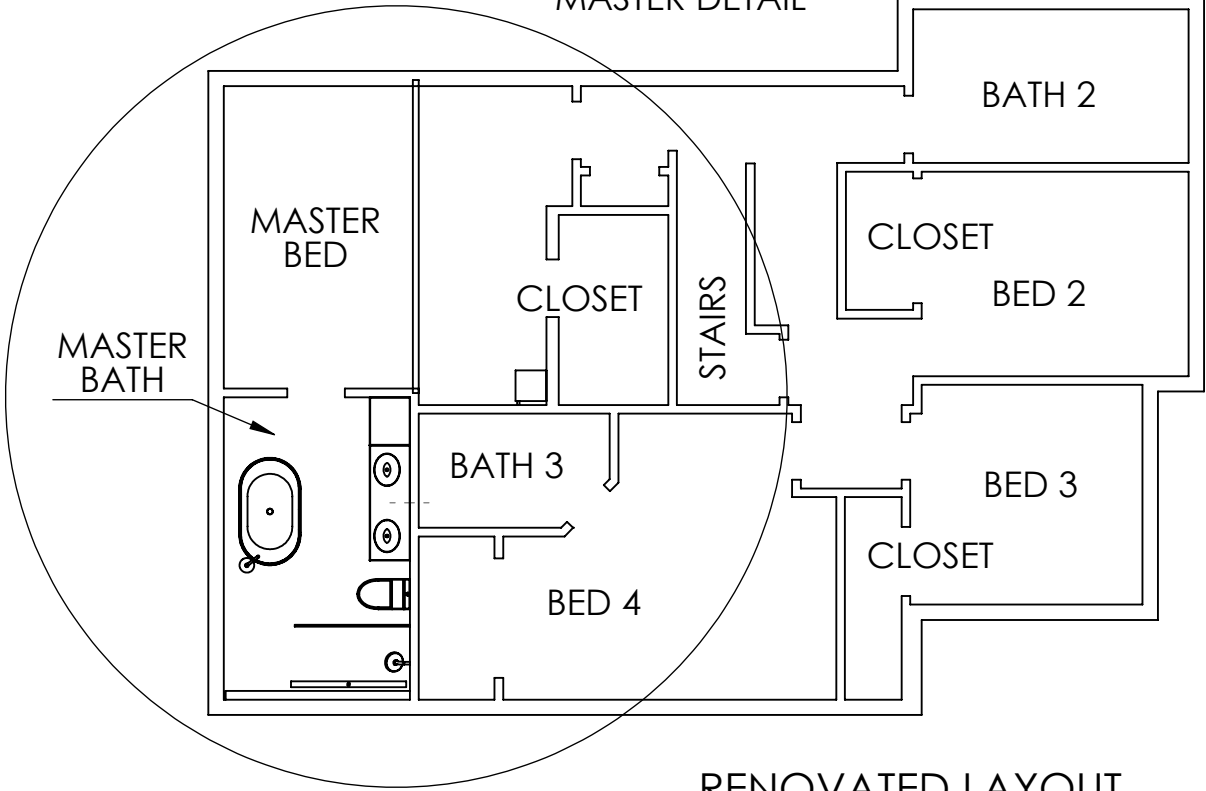
UNLESS OTHERWISE SPECIFIED:		NAME	DATE					
DIMENSIONS ARE IN INCHES TOLERANCES: FRACTIONAL ± ANGULAR: MACH ± BEND ± TWO PLACE DECIMAL ± THREE PLACE DECIMAL ±	DRAWN	DK	11.16.2017	TITLE: 41 CLARKE RD RENOVATION				
	CHECKED							
	ENG APPR.							
	MFG APPR.							
	Q.A.							
INTERPRET GEOMETRIC TOLERANCING PER:	COMMENTS: NORTH →							
MATERIAL								
FINISH								
DO NOT SCALE DRAWING					SIZE	DWG. NO.	REV	
					B	2ND FLOOR	A	
					SCALE: 1:50		SHEET 2 OF 3	

MASTER BED & BATH



MASTER DETAIL
SCALE 1 : 50

MASTER DETAIL



- NOTES:**
- REFERENCE ENGINEERING PLANS FOR LVL DETAILS AND INSTALLATION
 - SHOWER FLOOR LEVEL WITH BATHROOM FLOOR. REFERENCE 1ST FLOOR PRINTS FOR JOIST MODIFICATIONS FOR RECESSED SHOWER PAN.

PROPRIETARY AND CONFIDENTIAL
THE INFORMATION CONTAINED IN THIS DRAWING IS THE SOLE PROPERTY OF DINO KASVIKIS DESIGN. ANY REPRODUCTION IN PART OR AS A WHOLE WITHOUT THE WRITTEN PERMISSION OF DINO KASVIKIS DESIGN IS PROHIBITED.

UNLESS OTHERWISE SPECIFIED:		NAME	DATE	TITLE: 41 CLARKE RD RENOVATION			
DIMENSIONS ARE IN INCHES		DRAWN	DK				11.16.2017
TOLERANCES:		CHECKED					
FRACTIONAL ±		ENG APPR.					
ANGULAR: MACH ± BEND ±		MFG APPR.					
TWO PLACE DECIMAL ±					SIZE DWG. NO. REV B 2ND FLOOR A		
THREE PLACE DECIMAL ±							
INTERPRET GEOMETRIC TOLERANCING PER:		Q.A.					
MATERIAL		COMMENTS: NORTH →			SCALE: 1:100 SHEET 3 OF 3		
FINISH							
DO NOT SCALE DRAWING							