

ROUGH CUT LAWN MOWER

OWNER'S AND OPERATORS MANUAL

**MODEL NUMBER:
30-0045 (BRIGGS & STRATTON)
30-0140 (HONDA)**

**CUSTOMER MUST RECEIVE A COPY OF THIS
OWNER'S MANUAL AT TIME OF SALE**



1701 38TH AVE W
PO BOX 257
SPENCER, IA 51301
PHONE: 712-262-4191
FAX: 712-262-0248
SERVICE: 800-841-2222
E-MAIL: ccac@cyclecountry.com

ONE YEAR LIMITED WARRANTY

For the period of one year from the purchase date Cycle Country Accessories Corporation will replace for the original purchaser, free of charge, any part or parts, when found, upon examination by Cycle Country Accessories Corporation, to be defective in material, workmanship, or both.

All transportation cost incurred by the purchaser in submitting the material to Cycle Country Accessories Corporation for replacement under this warranty must be borne by the purchaser. If Cycle Country Accessories Corporation determines that the product must be returned to the factory for credit please call 1-800-841-2222 for an RMA number and shipping instructions.

The warranty does not apply to parts that have been damaged by accident, alteration, abuse, improper lubrication, normal wear, or other causes beyond Cycle Country Accessories Corporation's control. Products such as engines, electric motors, and actuators may carry an original manufacturer's warranty. Please call Cycle Country Accessories Corporation for information.

The ROUGH CUT MOWER is a powerful cutting machine and is capable of amputating hands and feet and can also throw materials that can cause damage to you or your property.

PLEASE READ ALL INSTRUCTIONS IN THIS MANUAL VERY CAREFULLY

IF YOU HAVE ANY QUESTIONS, PLEASE CONSULT YOUR DEALER OR CYCLE COUNTRY DIRECTLY AT 1-800-841-2222

IMPORTANT PRECAUTIONS:

DO NOT ALLOW children to ride on the ATV or lawn mower at any time.

DO NOT ALLOW children to operate the lawn mower.

Be familiar with the lawn mower controls, safety switch, and all cautions and warnings before operation of mower.

Only responsible persons with mature judgment should be allowed to operate the lawn mower.

Wear appropriate protective clothing when mowing such as gloves, head and eye protection, long pants and footwear.

Never operate under the influence of **DRUGS** or **ALCOHOL**.

Know how to stop the blade and engine quickly in preparation for emergencies. **Always** have the kill switch and kill switch tether properly installed. **SEE PARAGRAPH 2-3.**

Keep all people and pets at a safe distance from lawn mower.

All shields, safety/kill switch, throttle control and other devices must be in proper positions and functional before using the lawn mower.

Clear the area to be mowed of all wire, rocks, and other objects that could cause injury if thrown by the blades.

Shut off the engine before leaving the ATV. Remove the key when leaving the ATV and mower unattended.

DO NOT attempt to operate the lawn mower unless properly seated on the ATV.

Stop the engine and disconnect the spark plug wire and wait for blade to stop before attempting to unclog grass or leaves from the mower.

DO NOT operate with the belt covers removed for any reason.

Service the lawn mower and make adjustments only when the engine is stopped.

Tighten all bolts, nuts, and screws frequently and check, adjust or replace worn or broken parts as needed.

Handle gasoline with care!!! Never remove cap while engine is running. Fill the fuel tank outdoors only with the engine stopped and cool.

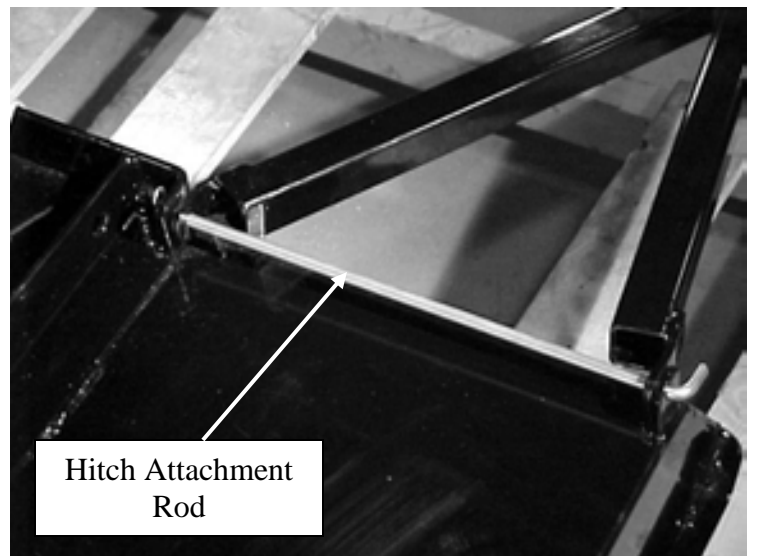
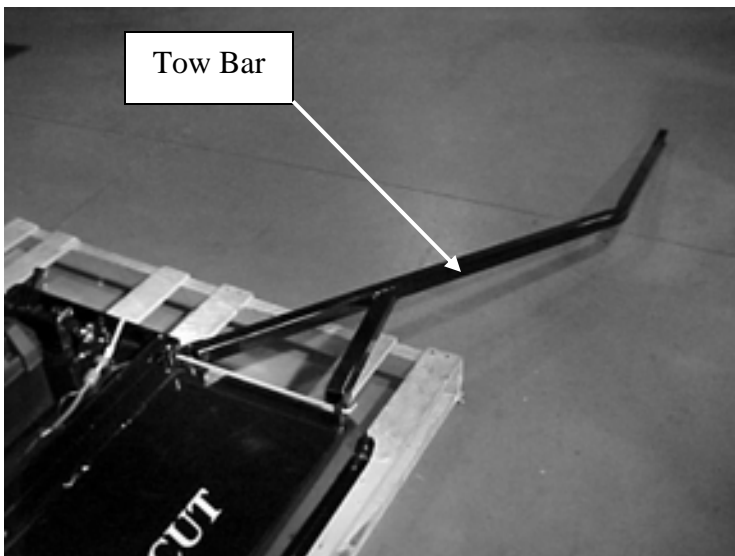
ASSEMBLY INSTRUCTIONS:

**Note: You will need to purchase a battery. Recommended battery is a Garden Tractor/Utility Battery
BCI Group: U1**

1. Remove mower from shipping crate.

Refer to the Deck Sub Assembly for Instruction #2.

2. Use the hitch attachment rod to attach the tow bar to the deck. The tow bar can be switched to the opposite side of the mower. It can also be flipped over to tow directly behind the ATV.

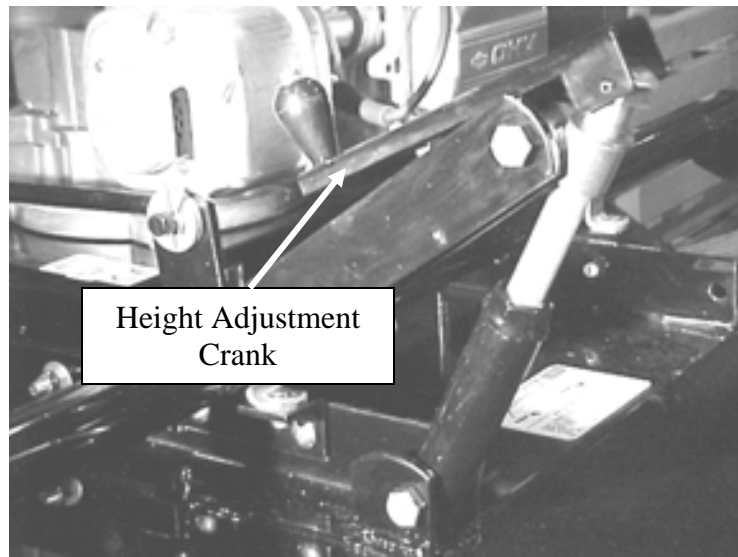


3. Add engine oil before startup.

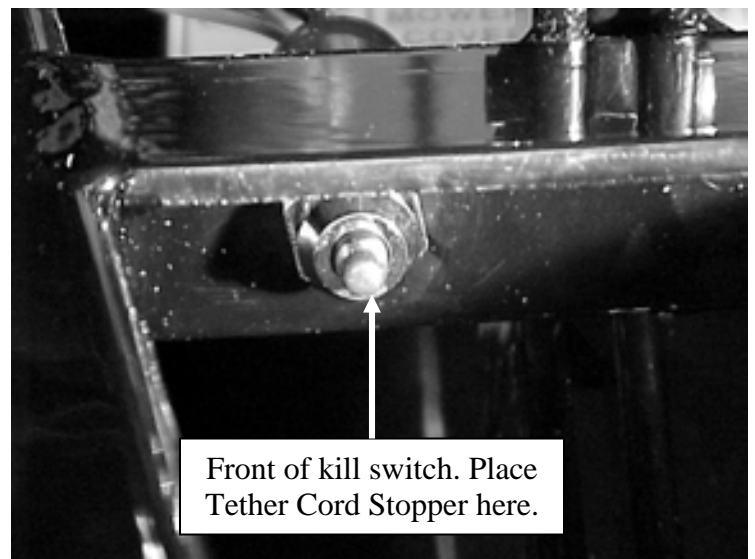
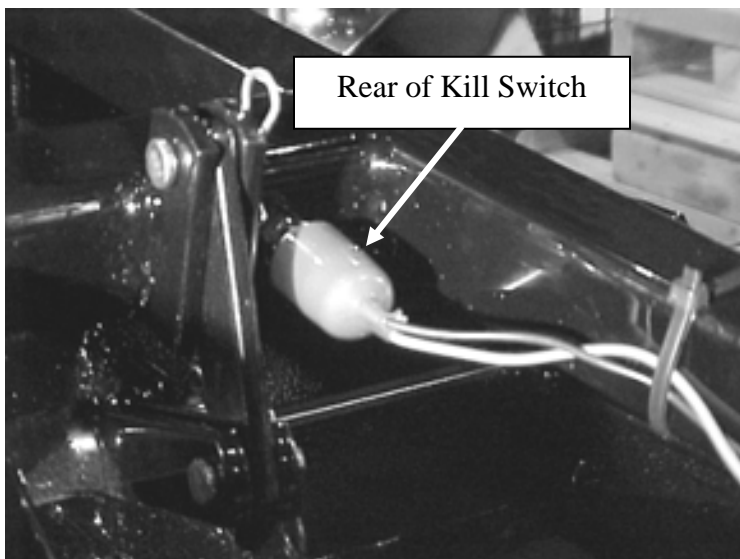


Prepare the engine according to the ENGINE OWNER'S MANUAL.

4. To increase or decrease the height of the cut, use the height adjustment crank handle on the rear axle sub assembly to raise and lower the height of the deck.



5. Attach the rubber stopper and safety/kill switch tether found in your parts bag as shown below. Install the tether cord support through the hole found on the tow bar. Secure with the hairpin provided.



OPERATING INSTRUCTIONS

Before operating your new **LAWN MOWER** – **PLEASE READ** and **FOLLOW** all the operating instructions and assembly instructions contained in this manual.

CAUTION: When transporting the lawn mower, be sure to crank the deck all the way down to prevent any movement during transport.

WARNING: The lawn mower is a powerful machine and is capable of amputating hands and feet, can throw materials that can cause injury and damage to you and your property. **PLEASE READ ALL INSTRUCTIONS IN THIS MANUAL CAREFULLY.**

STARTING AND STOPPING

1-1 PRE-START CHECK LIST

1. Check over your ATV to insure that it is in good working order.
2. Check over the lawn mower. All guards and covers must be in proper position.
3. Check the exterior surfaces of the lawn mower. Clean up any accumulation of grass, oil, or gas, especially around air intakes and cooling fins on the engine.
4. Check the engine oil and add as needed. (SEE ENGINE OWNER'S MANUAL.)
5. Fill the fuel tank outdoors where fumes will dissipate.
6. Check the spark plug for tightness and then connect spark plug wire.

1-2 STARTING –STOPPING

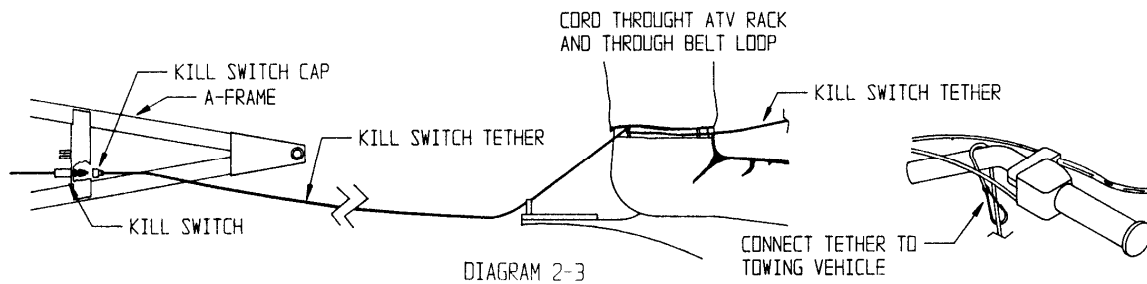
1. Before starting engine, be sure the safety/kill switch is in place and the safety/kill switch tether is laced through the rear rack of the ATV and draped over the handlebars so it is easily accessible to string through the drivers belt loop once the lawn mowers engine is started. Make sure the kill switch tether does not become tangled in any moving parts of the lawn mower, ATV or garden tractor.
2. To start engine, move throttle control to the **CHOKE** position, unless engine is warm. If engine is warm, move the throttle control to slow position. Turn the key to start engine. When engine is running, move the throttle control to the desired speed. **WARNING:** automatic clutch will engage blade drive system **IMMEDIATELY**. **KEEP FEET AND HANDS CLEAR OF DECK EDGES.**
3. As soon as lawn mower engine starting has been achieved and engine speed has been adjusted, mount the ATV/garden tractor and immediately string the safety/kill switch tether through operators belt loop (or equivalent) then around the ATV handle bars (as shown in Diagram 2-3).

- The engine is stopped by moving the throttle control down to the **STOP** position, turning the key to **OFF** position or by pulling the safety/kill switch tether.

WARNING! THE ONLY WAY TO INSURE THAT THE BLADES ARE STOPPED IS TO SHUT OFF THE ENGINE! DO NOT RELY ON THE CLUTCH TO DISENGAGE THE BLADES WITH THE ENGINE RUNNING!

1-3 EMERGENCY SHUTDOWN PROCEDURES

To shutdown the engine and blade quickly, in the event of an emergency, pull the safety/kill switch tether. This will stop the engine immediately. The blade still will be spinning however, so use



CAUTION when approaching the mower. If lawn mower blade should strike a hard object or become tangled in some debris, immediately pull the safety/kill switch tether, wait for the blade to come to a complete stop and remove the spark plug wire. Then, inspect blade for damage or untangle blade before continuing. Install the safety/kill switch tether cord holder onto the rear hitch tube. String the tether cord through the holder when stringing from the A-Frame to the belt loop.

1-4 MOWING SPEED SPECIFICATION

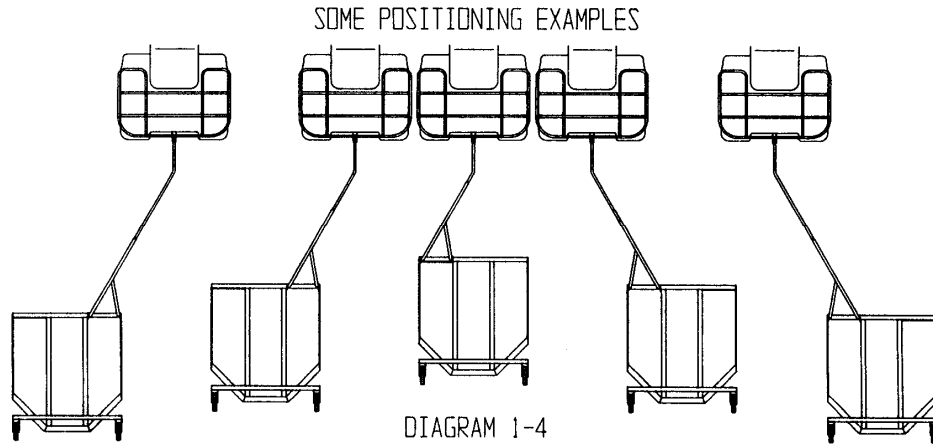
Mower is to be used at low speeds. When mowing, do not exceed 5 MPH. When towing mower, have engine off and blade stopped, and do not exceed 10 MPH. If mower cuttings are uneven, slow the mowing speed.

1-5 HEIGHT ADJUSTMENT

Height adjustment is controlled by a single screw adjustment at the rear of the mower. Height adjustment changes must be done with engine off. Turn crank handle clockwise to raise the mower, and counter clockwise to lower the mower. Level cutting is recommended and is adjusted by position of the 1/2" nuts on the lift rod.

1-6 HITCH POSITION

SEE DIA. 1-4 Engine must be stopped when setting new hitch position. Hitch positioning can be one of 3 primary positions, plus, extension of the hitch to 3 different lengths allows different amounts of offsetting positions relative to the ATV or garden tractor. The mower may be towed directly behind the ATV/garden tractor, slightly offset to the right or left, or fully offset right or left



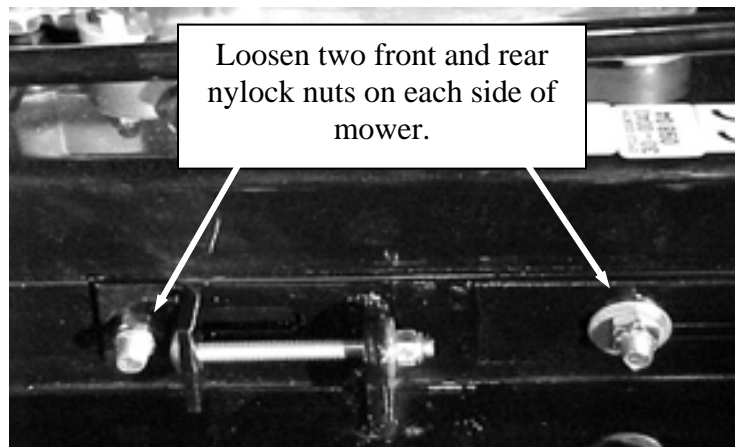
of the ATV/garden tractor. With each hitch position change, the safety/kill switch tether cord length must be changed.

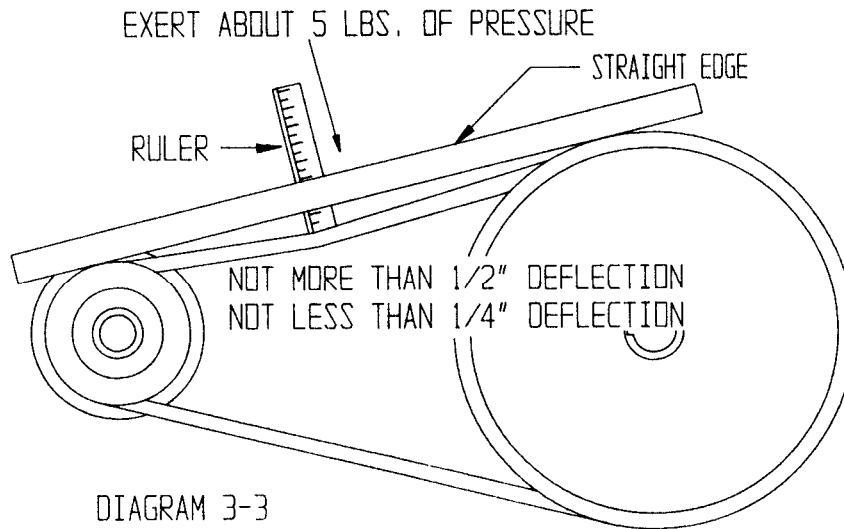
MAINTENANCE

2-1 BELT REPLACEMENT AND TENSION SETTING

Remove the belt guard and loosen the front and rear carriage bolt locknuts of the belt tensioner on each side of the mower (*see picture below*). Loosen the 3" carriage bolts. Remove old belt if necessary. Thread new belt around the pulleys. Tighten the 3" carriage bolts until proper belt tension is achieved. **SEE DIAGRAM 3-3**. Retighten the carriage bolt locknuts fully. Reinstall the belt guard.

Note: Check Belt Tension after the first 1/2 hour of use at the beginning of the season and daily thereafter.





2-2 CUTTING BLADE SERVICE

1. Before doing any work on blade, disconnect the spark plug wire and secure it away from the plug to prevent unintentional starting. Remove safety/kill switch cap. Have blade sharpened if it becomes dull from extended use. Have blade and blade support replaced if they become bent or chipped from impacting solid objects. Grease spindle at each blade change.
2. Check blade, spindle nuts and bolts at frequent intervals to make sure blade and spindle remains tight.

2-3 SPINDLE BEARING REPLACEMENT

Refer to the Parts List for Part #'s on Instructions 1-4

1. Remove the belt guard.
2. Remove the blade and blade support.
3. Remove the pulley from the spindle shaft.
4. Remove the spindle from the center deck.

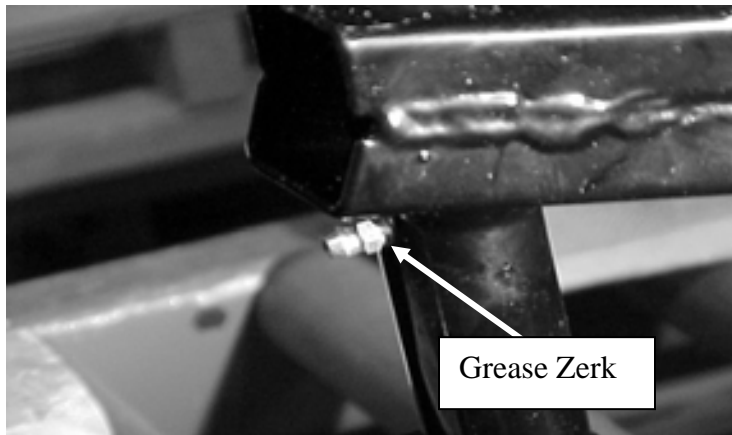
Refer to Spindle Parts List for Part #'s on Instructions 5-10

5. Remove the bolt, lockwasher, flatwasher and cotter pin.
6. Remove the spindle nut.
7. Pull spindle shaft out of the spindle casting.
8. Remove the spindle seals, these will have to be replaced with new ones.
9. Remove the spindle bearings.
10. Remove the spindle outer bearing cups. Using new spindle bearings, spindle outer bearing cups and spindle seals, put spindle back together in the opposite order it was taken apart (Instruction 10 thru 5). Then, grease the spindle until grease is discharged through either the top or bottom spindle seal. (Wipe off excess grease and put the spindle back on the mower using instructions 4 thru 1). Set belt tension using **SECTION 2-1**.

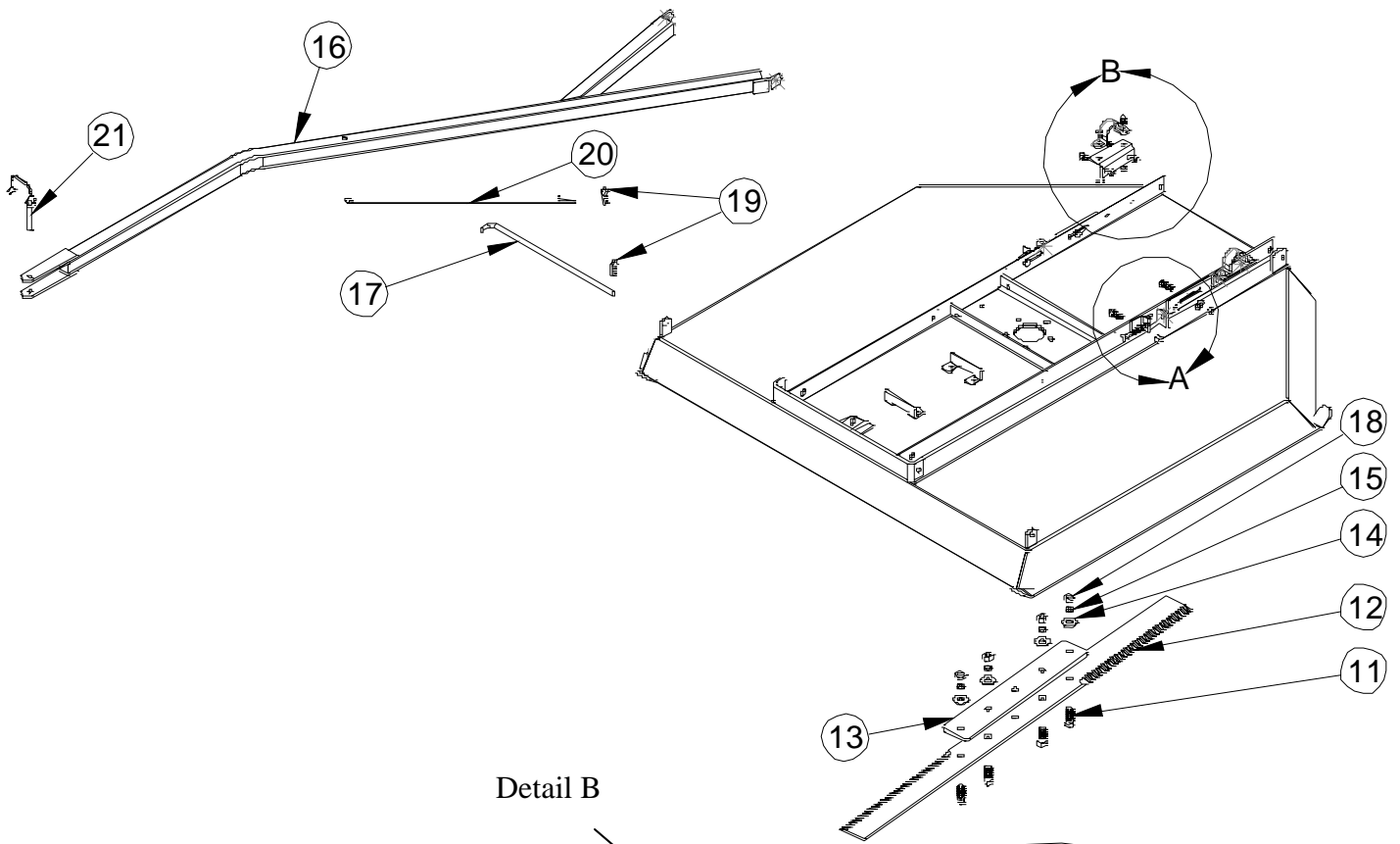
2-4 PERIODIC MAINTENANCE

Check these items before each use unless otherwise specified.

1. Check V-belt tension after the first 1/2 hour of use at the beginning of the season and daily thereafter. **SEE SECTION 2-1.**
2. Engine oil level, daily. Blade condition, daily.
3. Bolts, nuts, cotter keys and retaining pins before and after each use, and at each refueling.
4. Lubrication of mower parts weekly.
5. Follow engine manual recommendations for engine servicing.
6. Check for dull or nicked blades that may require sharpening or replacing.
7. Replace all damaged or missing fasteners immediately, before any operation of the mower.
8. Grease or lightly oil between moving parts.
9. Grease spindle whenever blade is replaced or at beginning of new season. Apply grease until a small amount is discharged from either upper or lower spindle seal. Wipe off excess grease and oil. Prevent or remove lubricants from contact with belt or pulley grooves.
10. Change oil according to engine manufacturer's owners manual.
11. Inspect mower parts and decals at each refueling.
12. Repair or replace all damage, worn or missing mower parts before using.
13. Replace all damaged or missing warning or instruction decals as soon as possible.
14. Located on the A-frame is the grease zerk. This zerk has already been greased for you but it is important for you to re-grease it at the beginning of each mowing season and at each oil change.

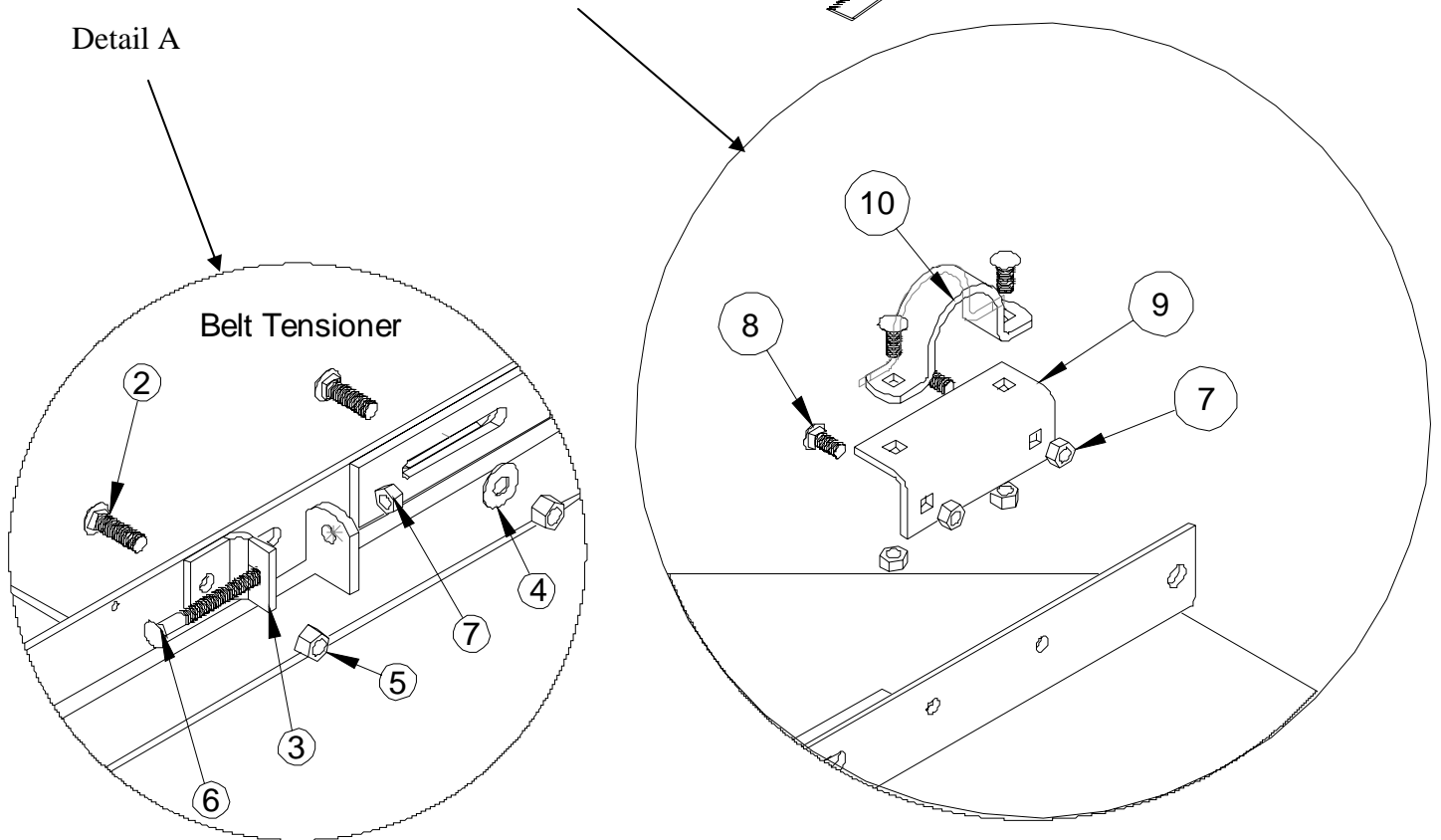


15. Periodically check all nuts and bolts for tightness.
16. Check exterior surfaces and clean up any accumulation of grass, oil, dirt or gas especially around air intakes and cooling fins on engine. Failure to keep clean will make the engine overheat, causing severe damage.
17. Check engine oil and add as needed. **(SEE ENGINE OWNER'S MANUAL.)**



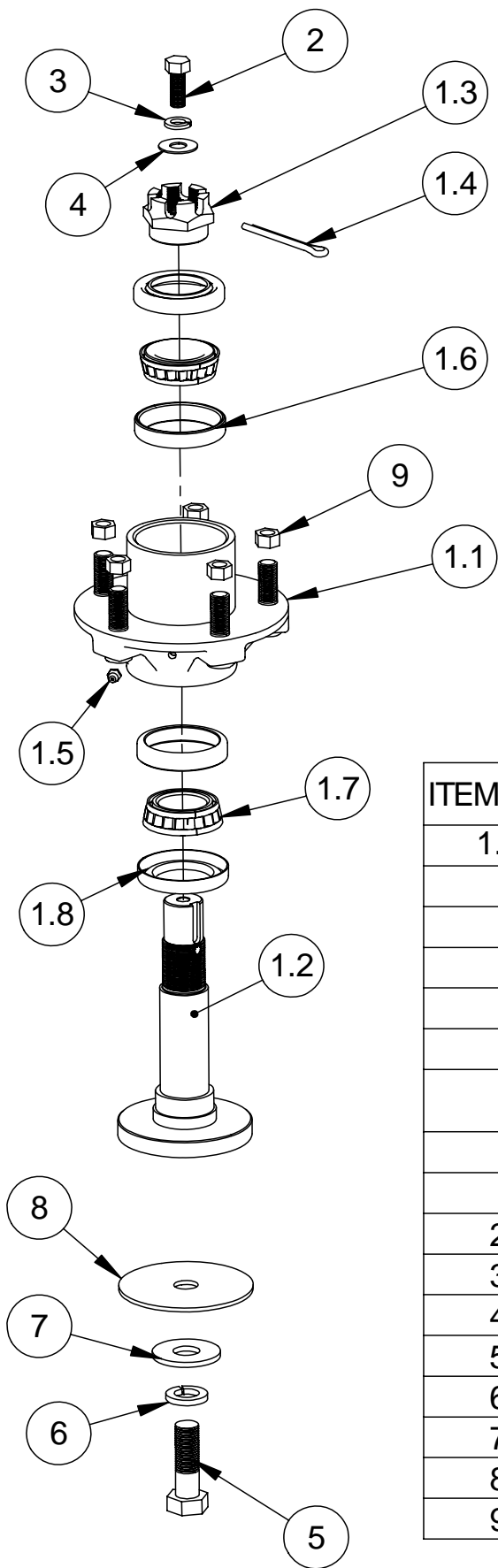
Detail B

Detail A



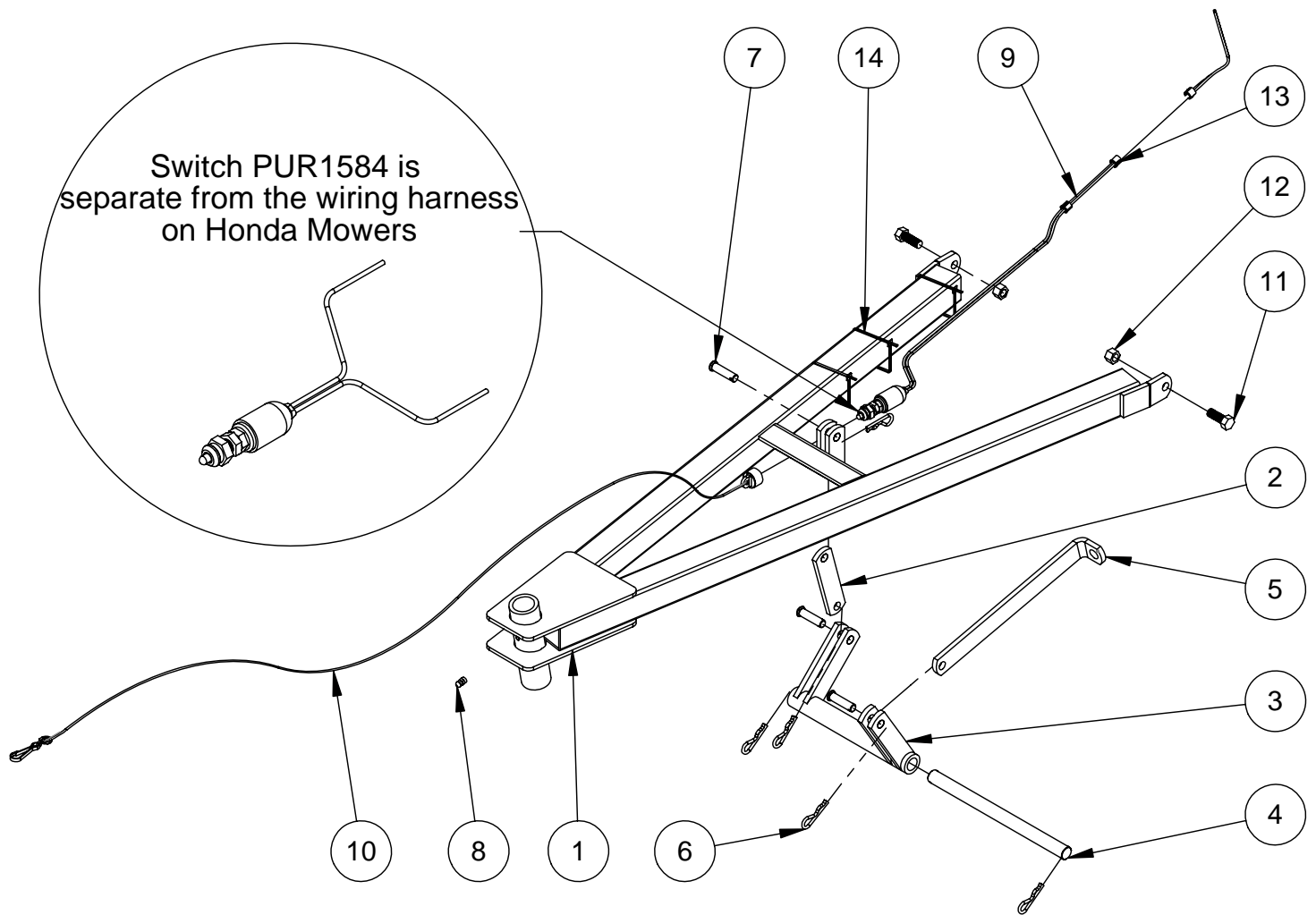
**Rough Cut Mower
Deck Sub Assembly
30-0045
30-0140
Parts List**

ITEM NO.	QTY.	PART NO.	DESCRIPTION
1	1	CYC1535	Deck
2	4	PUR1187	Carriage Bolt 3/8" x 1-1/4"
3	2	CYC2233	Belt Tension Bracket
4	2	PUR0250	3/8" Flatwasher
5	4	PUR1272	Nut 3/8" Nylock
6	2	PUR1201	Carriage Bolt 5/16" x 3"
7	10	PUR1275	Locknut 5/16" Nylock
8	8	PUR1202	Carriage Bolt 5/16" x 3/4"
9	2	CYC1579	Rear Axle Mount Bracket
10	2	CYC1580	Rear Axle U-Bracket
11	4	PUR1110	1/2" x 1-1/2" Bolt
12	1	PUR1574	Blade
13	1	PUR1575	Blade Support
14	4	PUR1233	1/2" Flatwasher
15	4	PUR1288	1/2" Lockwasher
16	1	CYC4862	Tow Bar
17	1	CYC1569	Hitch Attachment Rod
18	4	PUR1260	Lock Nut 1/2" Yellow
19	2	PUR1249	# 3 Hair Pin
20	1	PUR1587	Tether Cord Support
21	1	PUR1286	Lock Pin 3/8" x 2.5"



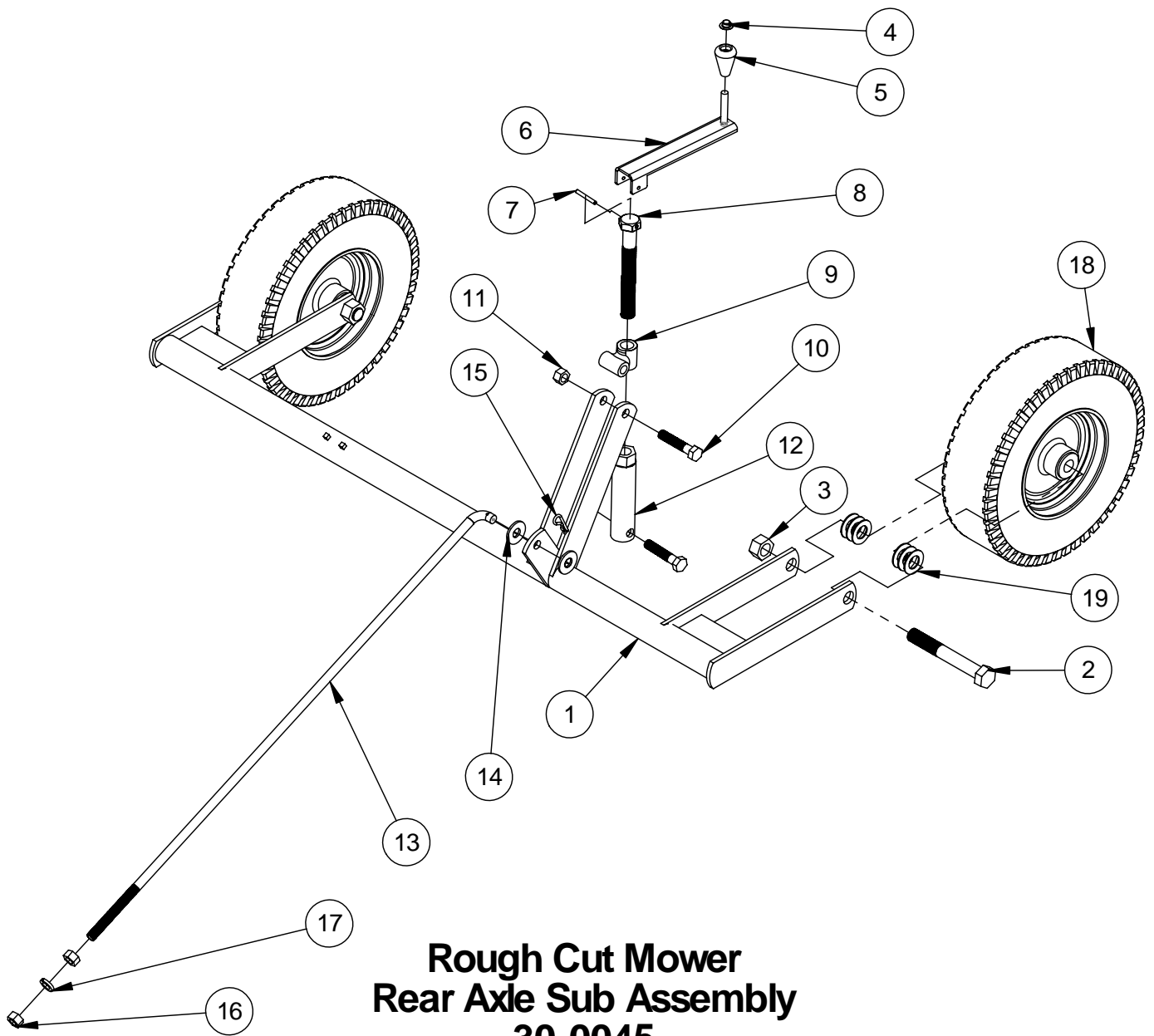
Rough Cut Mower Spindle Assembly 30-0045 30-0140 Parts List

ITEM NO.	QTY.	PART NUMBER	DESCRIPTION
1.7	1	PUR1565	Rough Cut Spindle
1.1	1	PUR1566	Spindle Casting
1.2	1	PUR1567	Spindle Shaft
1.3	1	PUR1568	Spindle Nut
1.4	1	PUR1573	Cotter Pin
1.5	1	PUR1572	Spindle Zerk
1.6	2	PUR1571	Spindle Outer Bearing Cup
1.7	2	PUR1570	Spindle Bearing
1.8	2	PUR1569	Spindle Seal
2	1	PUR1140	3/8" x 1" Bolt
3	1	PUR1292	3/8" Lockwasher
4	1	PUR0250	3/8" Flatwasher
5	1	PUR1168	5/8" x 2" Bolt
6	1	PUR1294	5/8" Lockwasher
7	1	PUR1245	5/8" Flatwasher
8	1	PUR1585	Blade Clutch Pad
9	5	PUR1262	Nut 3/8" Fine Thread



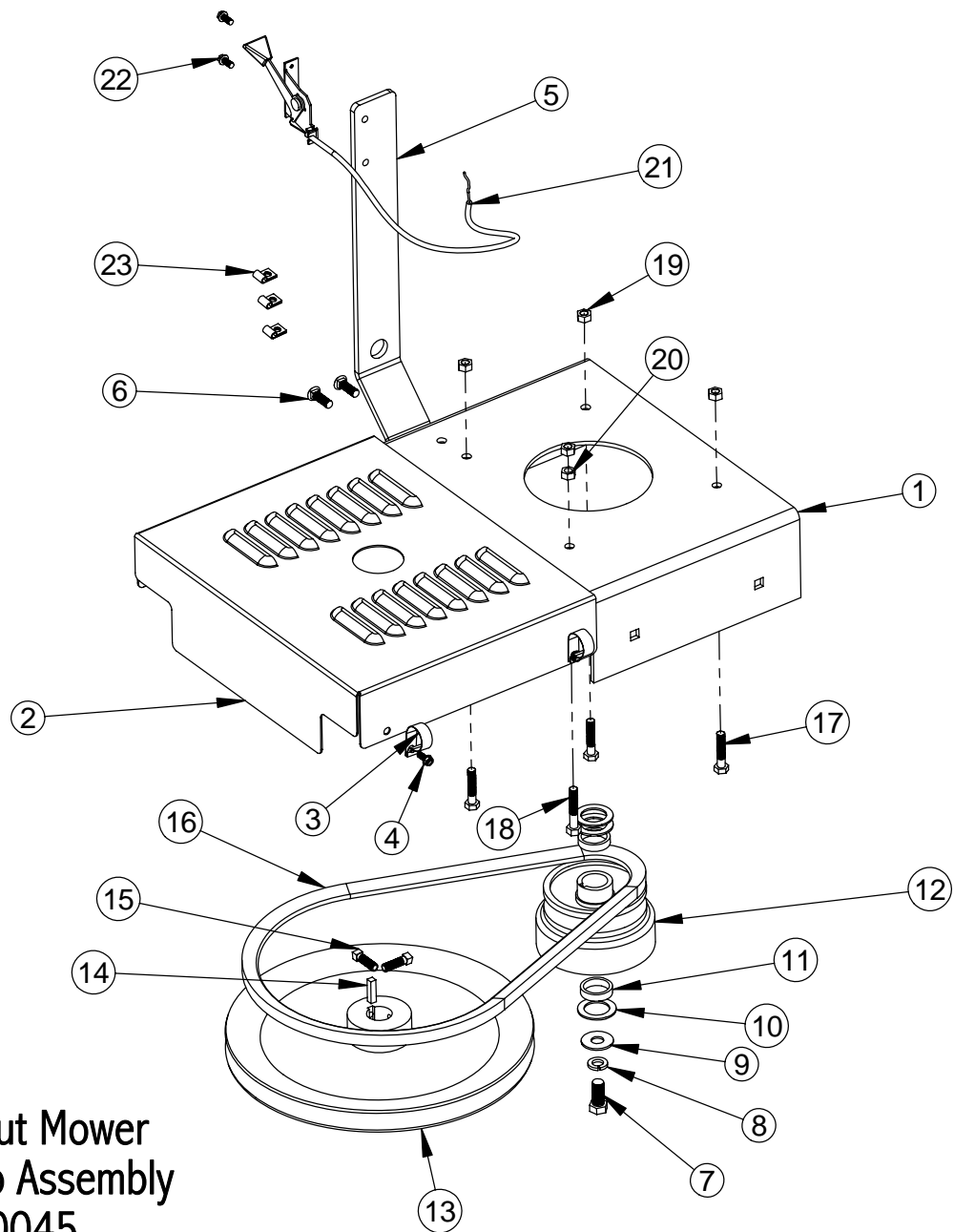
**Rough Cut Mower
A-Frame Sub Assembly
30-0045
30-0140
Parts List**

ITEM NO.	QTY.	PART NO.	DESCRIPTION
1	1	CYC0100	A-Frame Weldment
2	1	CYC1567	Toggle Plate
3	1	CYC1557	Bell Crank Assembly
4	1	CYC1560	Pivot Rod
5	1	CYC1568	Lift Rod Adjuster
6	5	PUR1249	#3 Hair Pin
7	3	PUR1209	Clevis Pin .375 x 1.375 Yellow Zinc
8	1	PUR1603	Grease Zerk
9	1	CYC5372	Safety Switch & Components (Briggs)
10	1	CYC5371	Safety Switch Cap/ Tether/ Hook
11	2	PUR1140	3/8" x 1" Bolt
12	2	PUR1272	Locknut 3/8" Nylock
13	3	PUR1593	Rubber Grommet
14	3	PUR1947	Cable Tie 14"



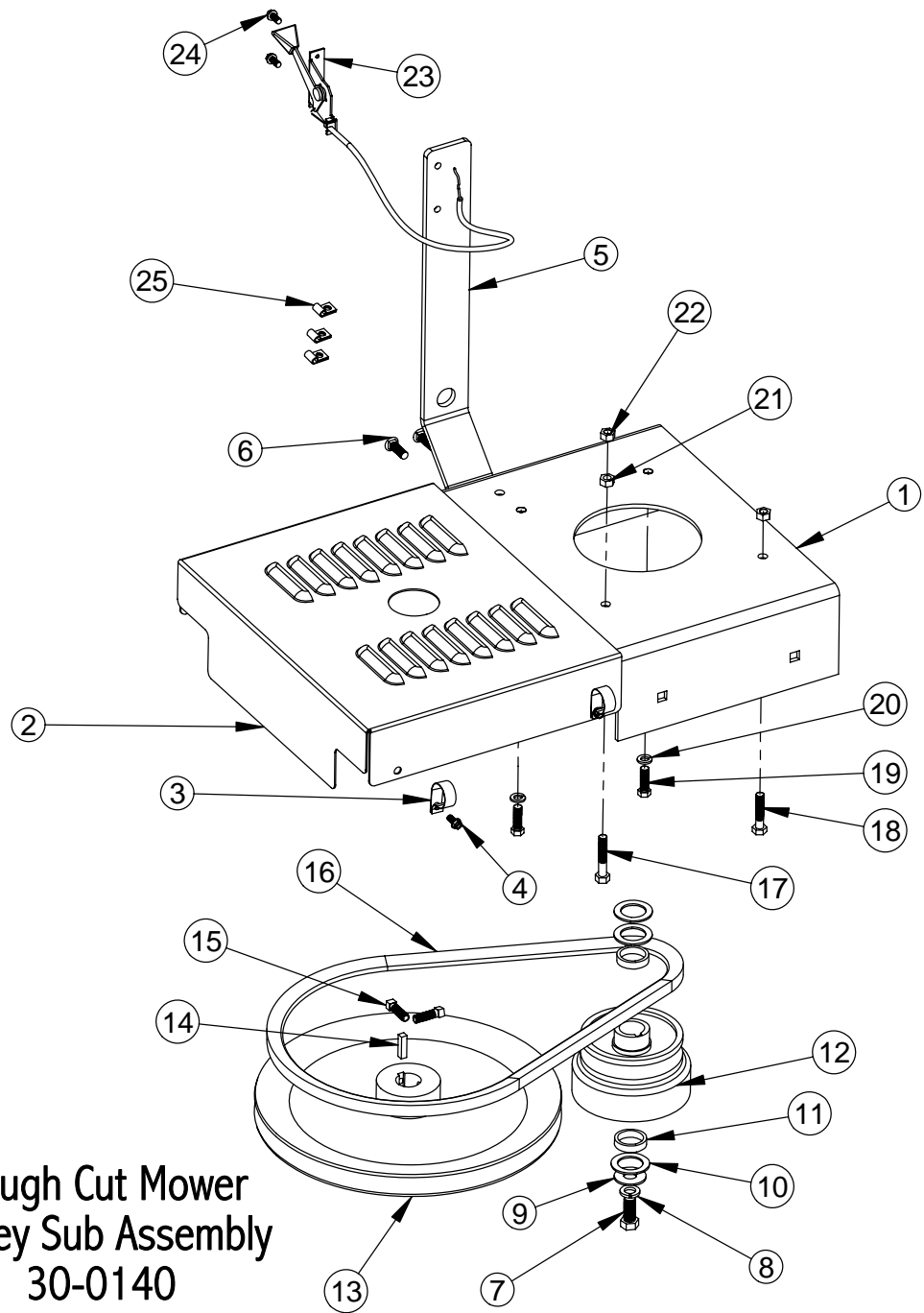
**Rough Cut Mower
Rear Axle Sub Assembly
30-0045
30-0140
Parts List**

ITEM NO.	QTY.	PART NO.	DESCRIPTION	ITEM NO.	QTY.	PART NO.	DESCRIPTION
1	1	CYC0111	Rear Axle Weldment	11	2	PUR1260	Lock Nut 1/2" Yellow
2	2	PUR1139	3/4" x 5-1/2" Bolt	12	1	CYC1586	Height Adjustment Nut
3	2	PUR1268	Lock Nut 3/4"	13	1	CYC1230	Lift Rod
4	1	PUR1353	3/8" Push Nut	14	2	PUR1233	1/2" Flatwasher
5	1	PUR1590	Knob	15	1	PUR1249	# 3 Hair Pin
6	1	CYC1582	Height Adjustment Crank	16	2	PUR1332	Nut 1/2"
7	1	PUR1363	3/16" x 1-1/2" Roll Pin	17	1	PUR1288	1/2" Lockwasher
8	1	PUR1564	Height Adjustment Bolt	18	2	PUR2179	Pneumatic Wheel
9	1	CYC1587	T-Sleeve	19	12	PUR1240	14 Gauge Machine Bushing
10	2	PUR1112	1/2" x 2-1/2" Bolt				



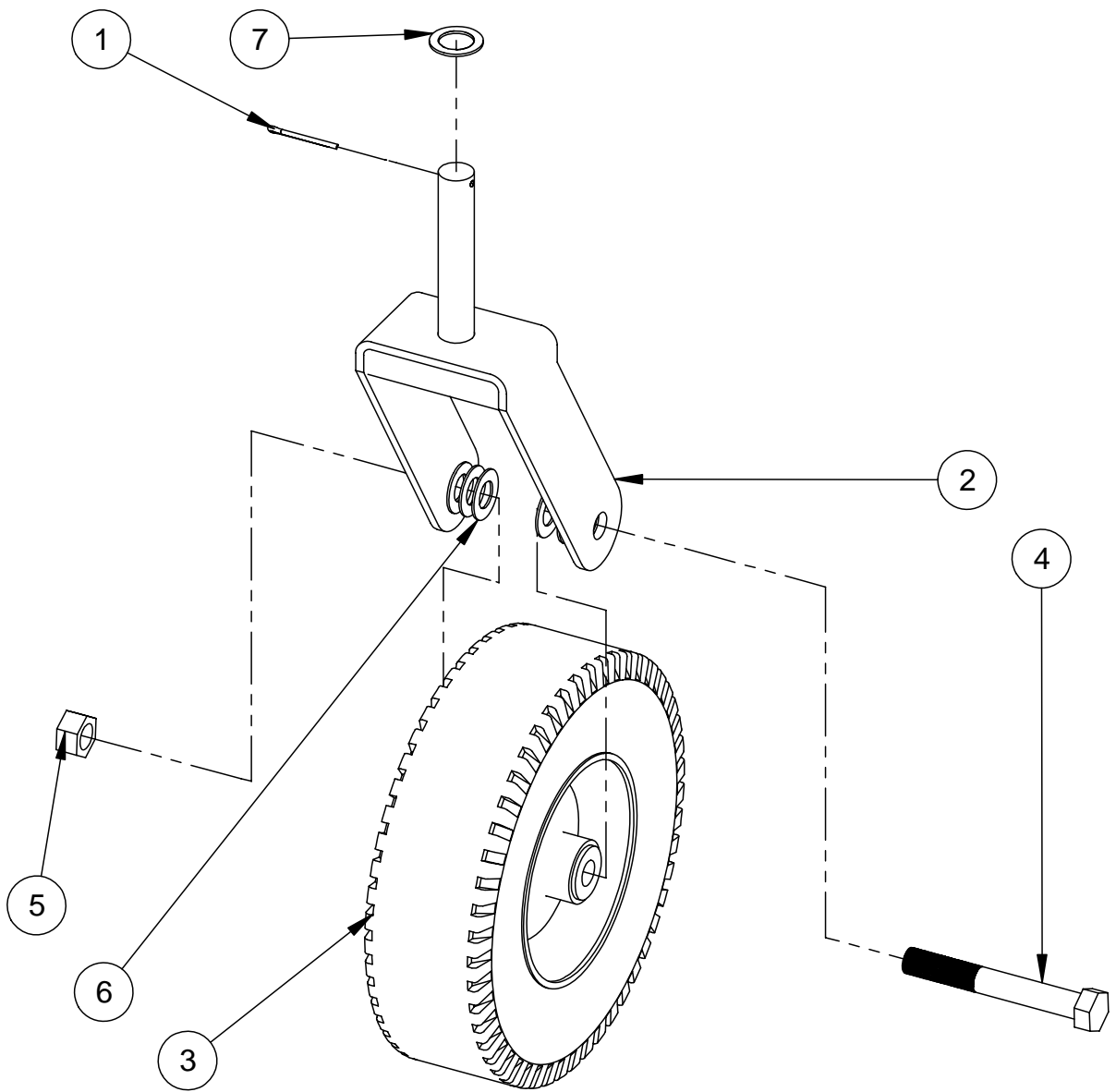
**Rough Cut Mower
Pulley Sub Assembly
30-0045
Briggs
Parts List**

ITEM NO.	QTY.	PART NO.	DESCRIPTION	ITEM NO.	QTY.	PART NO.	DESCRIPTION
1	1	CYC2235	Motor Mount	13	1	PUR1578	Pulley
2	1	CYC2234	Belt Guard Shield	14	1	PUR1595	1/4" x 1" Keystock
3	2	PUR1609	Clamp 3/4" Vinyl Coated	15	2	PUR1384	5/16" x 1" Square Head Set Screw
4	4	PUR1395	12 x 1/2" Hex Washer Head Tapping Screw	16	1	PUR1586	Belt
5	1	CYC2934	Bracket for throttle and starter switch	17	3	PUR1156	5/16" x 1-1/2" Bolt
6	2	PUR1189	Carriage Bolt 5/16" x 1"	18	1	PUR1159	5/16" x 1-3/4" Bolt
7	1	PUR1229	7/16" x 1" Fine Thread Bolt	19	6	PUR1275	Locknut 5/16" Nylock
8	1	PUR1295	7/16" Lockwasher	20	1	PUR1278	Flange Nut 5/16" Serrated
9	1	PUR1248	7/16" Flatwasher	21	1	PUR1563	Throttle Cable
10	3	PUR1301	1" x 1-1/2" Machine Bushing	22	2	PUR1392	10 x 1/2" Slotted Tapping Screw
11	2	CYC5443	Bushing Mower Clutch RC Mower	23	3	PUR1562	Throttle Cable Clamp
12	1	PUR0678	Engine Drive Clutch				



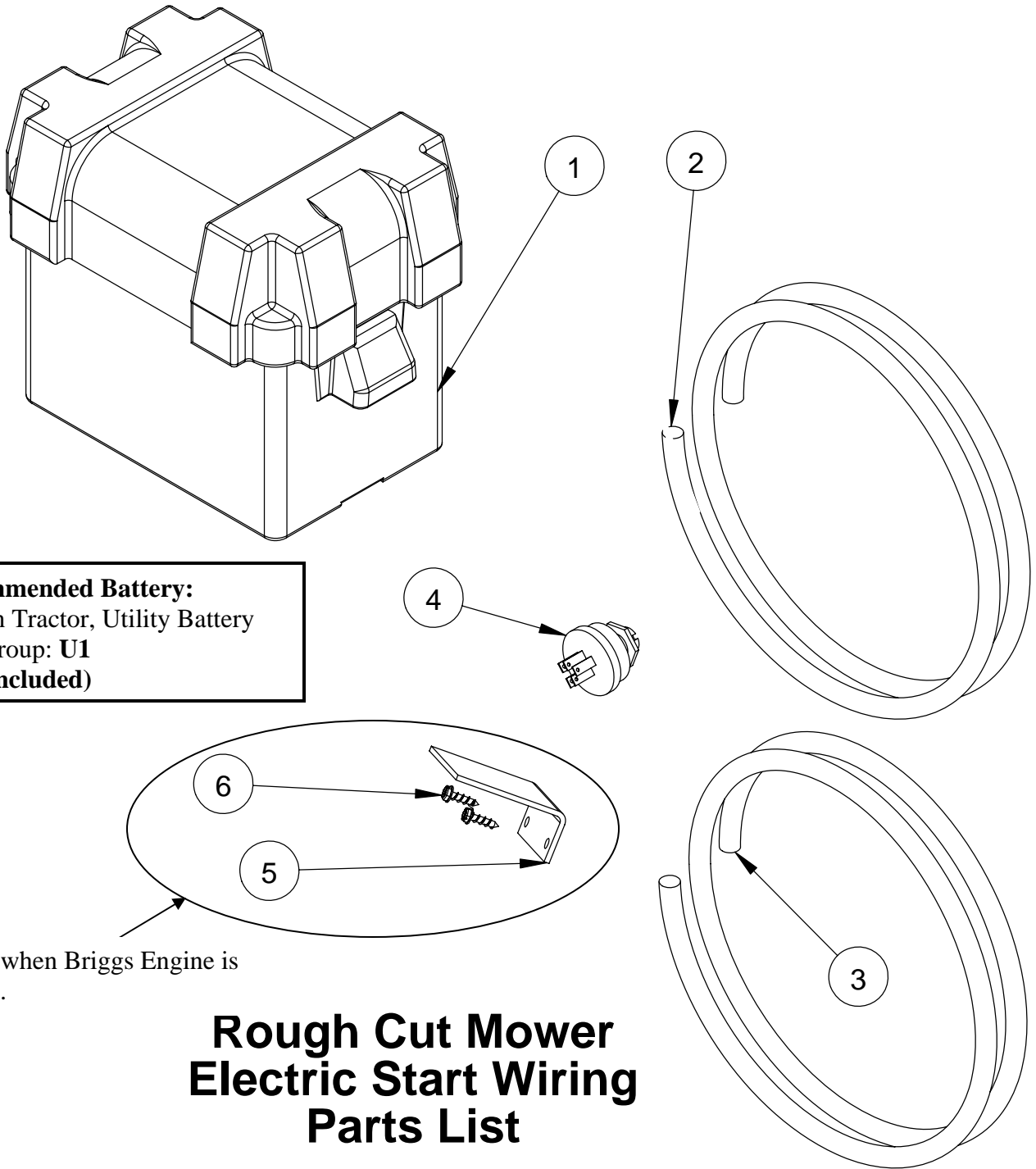
**Rough Cut Mower
 Pulley Sub Assembly
 30-0140
 Honda
 Parts List**

ITEM NO.	QTY.	PART NO.	DESCRIPTION	ITEM NO.	QTY.	PART NO.	DESCRIPTION
1	1	CYC2235	Motor Mount	14	1	PUR1595	1/4" x 1" Keystock
2	1	CYC2234	Belt Guard Shield	15	2	PUR1384	5/16" x 1" Square Head Set Screw
3	2	PUR1609	Clamp 3/4" Vinyl Coated	16	1	PUR1586	Belt
4	4	PUR1395	12 x 1/2" Hex Washer Head Tapping Screw	17	1	PUR1159	5/16" x 1-3/4" Bolt
5	1	CYC2934	Bracket for throttle and starter switch	18	1	PUR1156	5/16" x 1-1/2" Bolt
6	2	PUR1189	Carriage Bolt 5/16" x 1"	19	2	PUR1932	5/16" x 1" Fine Thread Bolt
7	1	PUR1229	7/16" x 1" Fine Thread Bolt	20	2	PUR1293	5/16" Lockwasher
8	1	PUR1295	7/16" Lockwasher	21	1	PUR1278	Flange Nut 5/16" Serrated
9	1	PUR1248	7/16" Flatwasher	22	4	PUR1275	Locknut 5/16" Nylock
10	3	PUR1301	1" x 1-1/2" Machine Bushing	23	1	PUR1563	Throttle Cable
11	2	CYC5443	Bushing Mower Clutch RC Mower	24	2	PUR1392	10 x 1/2" Slotted Tapping Screw
12	1	PUR0678	Engine Drive Clutch	25	3	PUR1562	Throttle Cable Clamp
13	1	PUR1578	Pulley				



**Rough Cut Mower
Wheel Caster Sub Assembly
30-045
30-0140
Parts List**

ITEM NO.	QTY.	PART NO.	DESCRIPTION
1	1	PUR1205	5/32" x 1-1/2" Cotter Pin
2	1	CYC0107	Front Fork Weldment
3	1	PUR2179	Pneumatic Wheel
4	1	PUR1139	3/4" x 5-1/2" Bolt
5	1	PUR1268	Lock Nut 3/4"
6	6	PUR1240	14 Gauge Machine Bushing
7	1	PUR1301	1" x 1-1/2" Machine Bushing (MB112-1)



Recommended Battery:
 Garden Tractor, Utility Battery
 BCI Group: U1
 (Not Included)

Used only when Briggs Engine is being used.

Rough Cut Mower Electric Start Wiring Parts List

ITEM NO.	QTY.	PART NO.	DESCRIPTION
1	1	PUR1540	Battery Box
2	1	CYC5572	Wiring Harness - Briggs RC
3	1	CYC5573	Wiring Harness - Honda RC
4	1	PUR1600	Ignition Switch
5	1	PUR1550	Solenoid Cover
6	2	PUR1407	Hex Tapping Screw 1/4" x 3/4"



Cycle Country Accessories Corporation has been a world-renowned manufacturer of quality ATV products since 1981 and we hope you will enjoy your new Cycle Country accessory.



Check out our other accessories



We're the Industry Snow Blade leader:

42", 48", 54", 60" & 72" Straight Blades

52" & 60" State Plows

Power 'V' Blade

If a winch is what you must have, then you've come to the right place:

1500lb, 2500lb and 3000lb Winches

We also have an extensive line of winch mounts for both Cycle Country and Warn winches

If you need to haul more gear on your quad, check out our baskets:

Front Basket

Rear Basket

Rear Drop Basket

If you need to mow the trail before you go riding one of these will help:

Our 54" finish cut Quick Silver54 can be mounted in front or towed behind your ATV

The 48" Rough Cut will handle your toughest mowing jobs

The Rough Cut 44 provides an economical way to handle all your mowing needs

If you are into deer hunting and want to make a food plot, you will love our 3 Point Hitch & Implements:

Rear Blade

Moldboard Plow

Spreader

Furrower

Rake

Cultivator

Disk Harrow

And many more accessories to help you Work Hard and Play Hard:

For more information call us at 1-800-841-2222, or on the web at www.cyclecountry.com