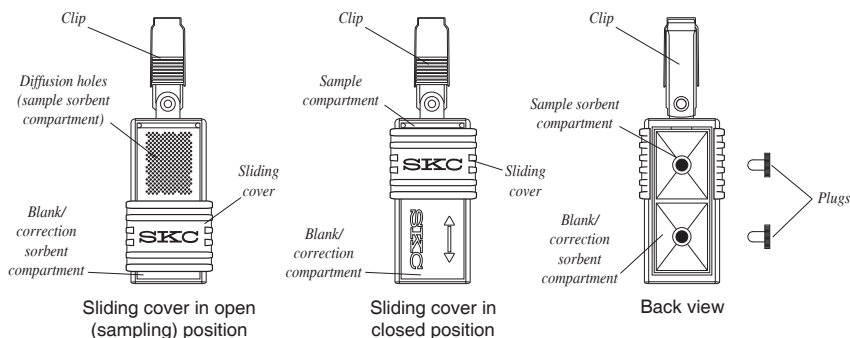




Operating Instructions

863 Valley View Road, Eighty Four, PA 15330 USA
Tel: 724-941-9701 Fax: 724-941-1369 e-mail: skctech@skcinc.com

ULTRA Passive Samplers Cat. Nos. 690-101, -103, -104, and -106



Applications

SKC patented* ULTRA® Passive Samplers provide for low ppb to ppt detection of organic vapors in ambient and indoor air.

Performance Profile

Sampling Rates: Go to the SKC Passive (Diffusive) Sampling Guide at www.skinc.com/catalog/passive-guide.php.

Analysis: Thermal desorption; gas chromatography
See *Analysis Instructions* at www.skinc.com/instructions/40125.pdf.

Shelf-life: 30 days from date of manufacture. Store at ≤ 39.2 F (4 C).

* U.S. Patent No. 6,607,581

Sampling

1. Open pouch. Remove sampler.
 - a. Do not discard pouch.
 - b. Store pouch in a clean, organic solvent-free environment.
2. Record the following:
 - a. **Sample ID** on pouch and sampler I.D. label
 - b. **Sampling location** on pouch
 - c. **Date sample taken** on pouch

! *Do not use Sharpie® markers or equivalent to mark label or pouch as these can off-gas VOCs.*

3. Clip sampler(s) in appropriate location.
 - a. **Indoors:** Clip sampler(s) to stand accessory (Cat. No. 690-302) and locate at appropriate height.
 - b. **Outdoors:** Clip sampler(s) inside shelter (open on two ends and bottom to allow air to flow freely). Hang shelter securely at the appropriate height.

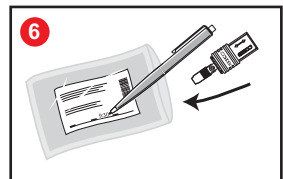
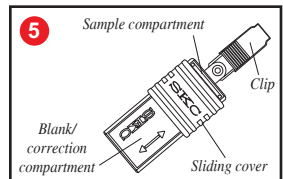
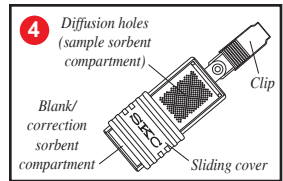
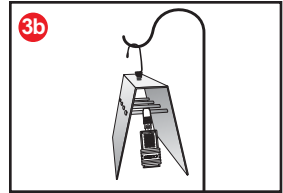
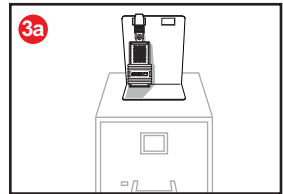
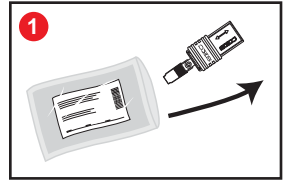
! *Ensure diffusion holes in sampler are not obstructed in any way.*

4. Start sampling: Slide sampler cover to open position (diffusion holes visible).
 - a. If performing for an extended sampling time or sampling in an area of high concentrations, install Rate Reducer accessory (Cat. No. 690-300); see *Operating Instructions 39008*.
 - b. Write sample start time on pouch label.

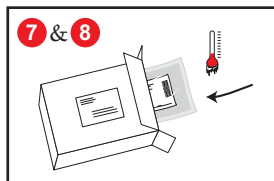
5. Stop sampling: Slide sampler cover to closed position (arrow and SKC visible).
 - a. Remove Rate Reducer, if used, and then slide cover to closed position; see *Operating Instructions 39008*.
 - b. Write sample stop time on pouch label.

6. Place sampler in its resealable pouch **immediately** after sampling.

! *Ensure sample ID on sampler matches sample ID on pouch.*



7. Seal pouch(es). Place pouch(es) in container with cool pack.
8. Use expedited shipping to ship sample(s) and Chain of Custody form(s) to a laboratory for analysis.



Storage

Before Sampling: Up to 30 days at ≤ 39.2 F (4 C) in a clean, organic solvent-free environment

After Sampling: 21 days at ≤ 39.2 F (4 C) in a clean, organic solvent-free environment

Ordering

ULTRA Passive Samplers, pk/5, prefilled with:	Cat. No.
Anasorb GCB1 , [#] 370 mg in each compartment	690-101
Chromosorb 106 , [#] 285 mg in each compartment	690-103
Tenax TA , [#] 253 mg in each compartment	690-104
Carbopack X , 400 mg in each compartment	690-106

[#] Limited shelf-life; see Storage above

[‡] Comparable to Carbopack B

¥ Go to www.osha.gov and search on ULTRA for additional information on sampling rates for Chromosorb 106.

Sampling Accessories

Stand for Indoor Sampling	690-302
Rate Reducer , 12 holes, lowers sampling rate for extended sampling time and for high concentrations	690-300
Shelter for Outdoor Sampling	690-303

Analysis Accessory

Thermal Desorption Tube , Perkin Elmer, 0.25-inch OD x 3.5-inch length, includes screens and end caps, ea	P226530
--	----------------

SKC Limited Warranty and Return Policy

SKC products are subject to the SKC Limited Warranty and Return Policy, which provides SKC's sole liability and the buyer's exclusive remedy. To view the complete SKC Limited Warranty and Return Policy, go to <http://www.skcinc.com/warranty.asp>.

