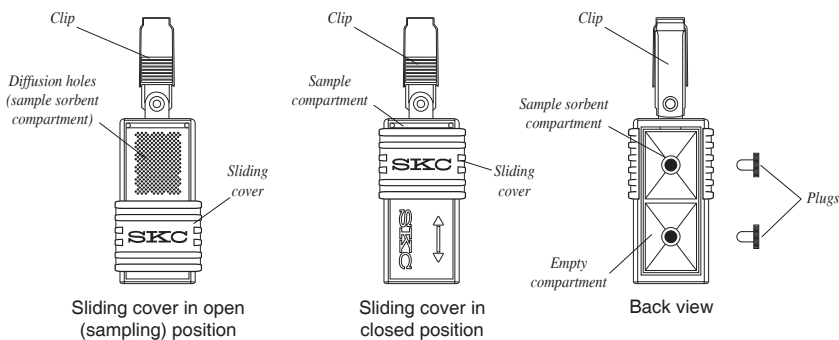




Operating Instructions

863 Valley View Road, Eighty Four, PA 15330 USA
Tel: 724-941-9701 Fax: 724-941-1369 e-mail: skctech@skcinc.com

ULTRA Passive Samplers Without Blank, with Charcoal Sorbent Cat. No. 690-105-NB



Applications

SKC patented* ULTRA® Passive Samplers provide for low ppb to ppt detection of organic vapors in ambient and indoor air.

Performance Profile

Sampling Rates: Go to the SKC Passive (Diffusive) Sampling Guide at www.skinc.com/catalog/passive-guide.php.

Analysis: Solvent extraction; gas chromatography (GC)
See *Analysis Instructions* at www.skinc.com/instructions/40127.pdf.

Shelf-life: Six months from date of manufacture. Store at ≤ 39.2 F (4 C).

* U.S. Patent No. 6,607,581

Sampling

1. Open the pouch. Remove the sampler.
 - a. Do not discard the pouch.
 - b. Store the pouch in a clean, organic solvent-free environment.
2. Record the following:
 - a. **Sample ID** on the pouch and sampler ID label
 - b. **Sampling location** on the pouch
 - c. **Date sample taken** on the pouch

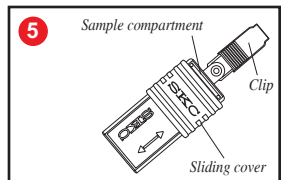
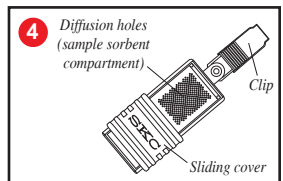
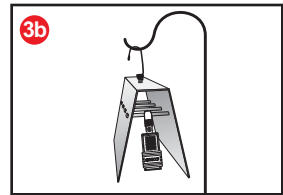
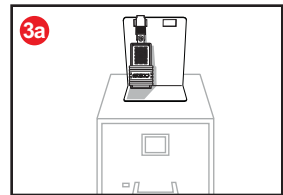
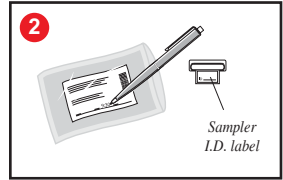
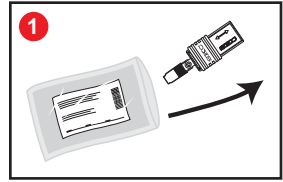
❗ **Do not use Sharpie® markers or equivalent to mark the label or pouch as these can off-gas VOCs.**

3. Clip the sampler(s) in an appropriate location.
 - a. **Indoors:** Clip the sampler(s) to a stand accessory (Cat. No. 690-302) and locate at an appropriate height.
 - b. **Outdoors:** Clip the sampler(s) inside the shelter (open on two ends and bottom to allow air to flow freely). Hang the shelter securely at the appropriate height.

❗ **Ensure the diffusion holes in the sampler are not obstructed in any way.**

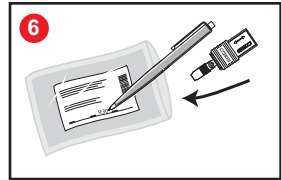
4. Start sampling: Slide the sampler cover to the open position (diffusion holes visible).
 - a. If performing for an extended sampling time or sampling in an area of high concentrations, install the Rate Reducer accessory (Cat. No. 690-300); see *Operating Instructions 39008*.
 - b. Write the sample start time on the pouch label.

5. Stop sampling: Slide the sampler cover to the closed position (arrow and SKC visible).
 - a. Remove the Rate Reducer, if used, and then slide the cover to the closed position; see *Operating Instructions 39008*.
 - b. Write the sample stop time on the pouch label.

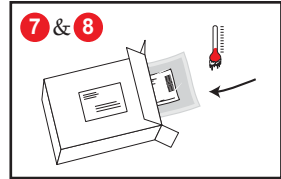


6. Place the sampler in its resealable pouch **immediately** after sampling.

❗ **Ensure the sample ID on the sampler matches the sample ID on the pouch.**



7. Seal the pouch(es). Place the pouch(es) in a container with a cool pack.
8. Use expedited shipping to ship the sample(s) and Chain of Custody form(s) to a laboratory for analysis.



Storage

Before Sampling: Up to 6 months at ≤ 39.2 F (4 C) in a clean, organic solvent-free environment

After Sampling: 21 days at ≤ 39.2 F (4 C) in a clean, organic solvent-free environment

Ordering

ULTRA Passive Samplers, pk/5, prefilled with:	Cat. No.
Charcoal, 500 mg	690-105-NB

Limited shelf-life; see Storage above

Sampling Accessories

Stand for Indoor Sampling	690-302
Rate Reducer, 12 holes, lowers sampling rate for extended sampling time and for high concentrations	690-300
Shelter for Outdoor Sampling	690-303

SKC Limited Warranty and Return Policy

SKC products are subject to the SKC Limited Warranty and Return Policy, which provides SKC's sole liability and the buyer's exclusive remedy. To view the complete SKC Limited Warranty and Return Policy, go to <http://www.skcinc.com/warranty.asp>.

