

# Operating Instructions

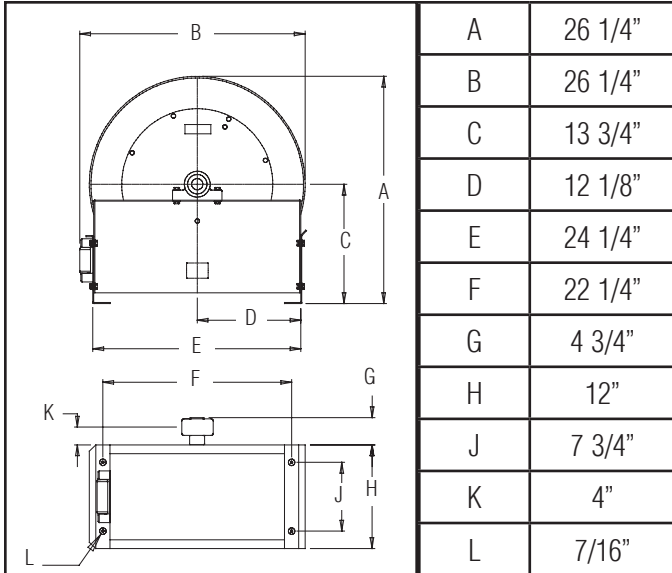
## Series D9000 Spring Driven Hose Reels

High Pressure Model Numbers:

D9100 OHP    D9150 OHP    D9175 OHP



### Dimensions



Four 7/16" diameter mounting holes

### SAFETY

1. Do not use reel at higher pressures or temperatures than listed on the back of this bulletin.
2. Remove all spring tension before beginning disassembly process.
3. Reel spring motor case is permanently sealed. Any attempt to remove the spring motor may cause serious injury.

#### INSTALLATION:

The swivel union is packed separately in the reel carton, use teflon tape to assure a satisfactory seal. A flexible hose connection must be used between the hose reel inlet and the source of supply to prevent possible misalignment and binding. Non flexible connections will void the warranty, pressure rating of inlet hose must be equal to or more than the pressure rating of the reel. Consult factory for proper spring when installing reels above 16 ft.

#### LUBRICATION:

Hose reel spring and bearings are factory lubricated and require no further lubrication.

#### REPLACING HOSE:

1. Wind spool flange clockwise-facing swivel-until spring is tight.
2. Back off three turns and latch.
3. Insert hose through roller guide.
4. Connect hose fitting to female outlet ell.

#### ADJUSTMENTS:

To adjust spring tension, add or remove wraps of hose from the spool, one wrap at a time until desired tension is obtained.

#### REPAIRS:

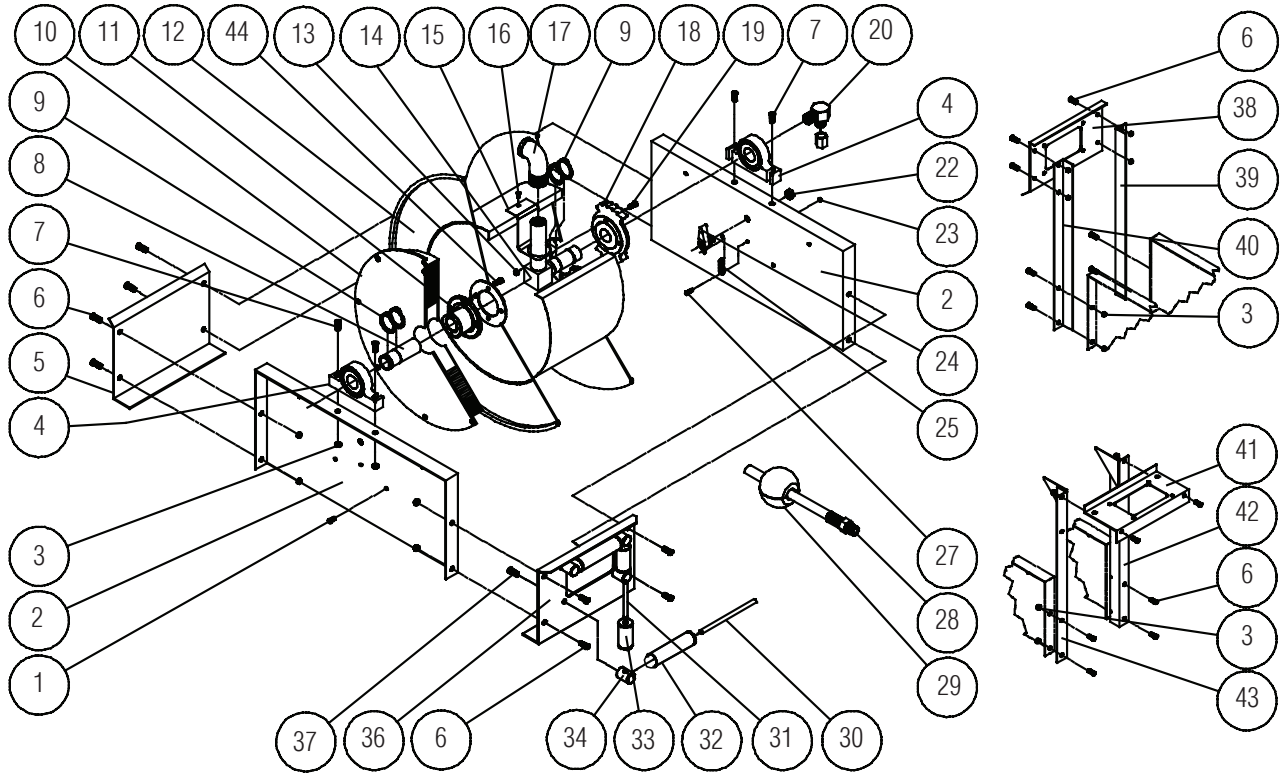
Extensive repairs should be performed only by an authorized serviceman or factory to avoid damage which may void your warranty. Remove all spring tension before beginning disassembly process.

#### MODIFICATION:

Hose latching mechanism can be removed for constant tension applications.

Form# 498-285 Rev: 1/2016

# Series D9000 Spring Driven Hose Reels



Item #	Part #	# Req	Description	Item #	Part #	# Req	Description	Item #	Part #	# Req	Description
1	S2-41	4	1/4-20 x 1/2" hex screw	14	S270063	1	1" Inlet tube	31	S270015	2	Guide roller pin - short
2	270009	2	Side frame	15	270029	1	Hose outlet support	32	262436-5.468	2	Guide roller
3	S281-6	12	3/8-16 hex flange nut	16	S32-136	1	#10 x 3/8" self tap screw	33	262436-2.968	2	Guide roller
4	S270058	2	Pillow block	17	S257-26	1	Swivel union, 90°	34	S270014	4	Guide roller post
5	270012	1	End frame support	18	S270001	1	Latch ratchet hub	35	270011	1	Hose guide roller plate
6	S44-2	8	3/8-16 x 5/8" mach. screw	19	S2-42	4	1/4-20 x 5/8" hex screw	36	S2-51	4	5/16-18 x 1/2" hex screw
7	S44-8	4	3/8-16 x 1 3/4" screw	20	S602033	1	Swivel Assembly	38	270045	1	Guide roller plate SW
8	602314	1	Support shaft	22	S280-8	1	1/2-20 hex flange nut	39	270043	1	SW support bracket
9	S140-31	6	Snap ring	23	S82-15	1	10-32 x 3/8" nyloc nut	40	270042	1	SW support bracket
10	S270105	1	Spring & case assembly	24	S600018	1	Latch pawl assembly	41	270044	1	Guide roller plate TW
11	S270002	1	Spring arbor	25	S260067	1	Latch spring	42	270041	1	TW support bracket
12	270107	1	Sheave assembly	27	S393-2	1	10-32 shoulder screw	43	270040	1	TW support bracket
13	S281-4	8	1/4-20 hex flange nut	30	S270016	1	Guide roller pin - long	44	S328-29	4	5/16-18 x 1/2" screw

Item #	Description	# Req	D9100 OHP	D9150 OHP	D9175 OHP
28	Hose assembly	1	None	S19-260044	S18-260044
29	Bumper stop assembly	1	None	2-HR1005	2-HR1005
--	Hose ID and length	--	None	3/8" x 50'	3/8" x 75'
--	Working pressure	--	5000 PSI	4800 PSI	4800 PSI
--	Max. temperature	--	210 °F	210 °F	210 °F