

**DIGITAL VIDEO
RECORDER**

**ECOR264 x1
Series**

- ECOR264-4x1
- ECOR264-9x1
- ECOR264-16x1

- ECOR264-4x1F
- ECOR264-9x1F
- ECOR264-16x1F

- ECOR264-4x1R
- ECOR264-9x1R
- ECOR264-16x1R



**Cost Effective H.264 Performance
Digital Video Recorder**



ECOR264 x1

Cost Effective H.264 Performance plus Powerful Feature Set

This new EverFocus digital video recorder series is based on H.264 compression technology, resulting in enhanced recording capacity and improved network image transmission speed with high image quality. The choice of 4, 9 or 16 camera configuration with real-time recording (120/100 D1 fps or 480/400 CIF fps in total, frame rate independently configurable over cameras) along with comprehensive features including remote viewing directly on SmartPhone and PDA portable devices and extended event recording settings enable the almost universal application of this DVR series.

► Features

- H.264 Compression format for efficient disk utilization and network bandwidth conservation
- Real time recording rate and playback rate for all cameras
- Normal and event recording frame rate can be set independently for each camera
- Main Monitor: VGA(800 x 600; 1280 x 1024*) or BNC outputs
- Call monitor: additional composite BNC output with multiplex and/or sequenced views
- Simultaneous recording at D1 or 2CIF with real time streaming at CIF for remote web viewing to conserve bandwidth
- Pentaplex Operation (Simultaneous live, recording, playback, archiving and remote viewing)
- Free EverFocus DDNS Service - static IP address is not required for reliable remote access
- User friendly GUI with graphical icons and visual indicators
- Supports eSATA (reserved for future use),(Hot Swappable model does not support eSATA)
- Supports SmartPhone and PDA for mobile monitoring
- Multiple Control Inputs: mouse/front panel/IR remote controller/EKB500 keyboard
- Built-in record time calculator for fast recording estimation
- Express Setup: a unique menu option for quick & easy installation
- Express Archive: archive video instantly (to USB) while playing back
- Express Playback: simply point, click and drag the playback bar to view desired recordings
- Express Search: use the intuitive playback bar with simple drag & drop operations
- Smart Search: quickly identify motion in areas of interest from recorded video
- Snapshot Search: extract images from recorded video at specific intervals to quickly locate events
- Remote configuration support from the built-in web interface
- Gigabit Ethernet interface for remote network viewing and control
- On-screen PTZ control via mouse or front panel
- Support for up to 1 Hot Swappable HDD or 2 fixed internal HDD*
- Built-in DVD burner*
- 2 USB 2.0 ports (1 located on front panel, 1 located on back panel) for video archive and mouse usage
- Multi-language support
- Watermark capabilities to identify intentional modifications to exported data
- 19" Rack mountable
- USB Mouse and IR remote control included

*Feature may not be available on all models



► Advantages

Real-time High Resolution Recording

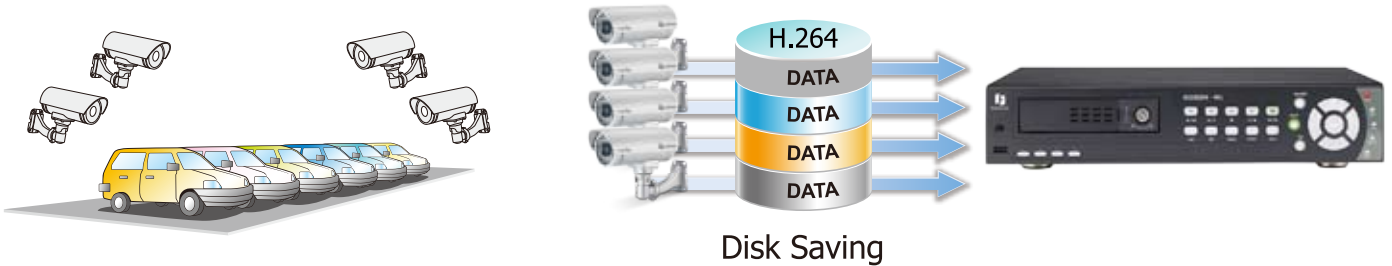
Applying high speed data processing technology across all channels with H.264 full-frame compression, the ECOR264X1 achieves the ability to record and play real time video on all channels on all models. Frame rate can be independently set over the channels to fit the different recording speed requirements in different scenes. The ECOR264X1 series also provides simultaneous recording and full speed playback over all channels.



H.264 Recording

H.264 Compression Technology

H.264 compression technology is considered to be approximately 1.5 times more efficient in compression ratio than MPEG-4. Another benefit from H.264 compression is the remote viewing of high quality images with lower LAN/WAN bandwidth utilization.

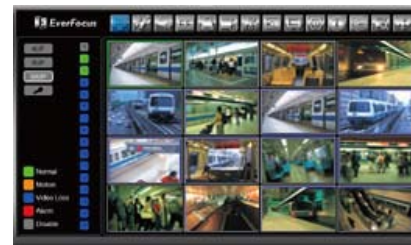


Pentaplex Operation plus Dual Streaming

For optimized system performance, the ECOR264 x1 can simultaneously record and play back at one resolution, plus stream video for web viewing at another. If recording/playing at 2CIF or D1 resolution, dual streaming at CIF resolution allows remote viewing of full motion on all cameras while conserving bandwidth. The DVR can achieve high recording quality locally and still deliver smooth remote motion reproduction in low bandwidth environments.

Convenient Monitoring with Web-viewer

The DVR has a built-in web server that enables users to monitor live and playback DVR images without special software, through a web browser, from any supported PC.



Video Streaming to Mobile Devices

The ECOR264 x1 series supports http streaming for MAC and PDA/SmartPhone monitoring on a variety of PCs and mobile devices, allowing you the capability to check your home or business on-the-go directly from a variety of mobile devices – FREE! No additional servers or purchased programs required.

Quick & Easy Search Mode

By selecting among thumbnail images extracted from the recorded video at a user defined interval, at a specific date and time, in response to various types of events, or based on a 'smart search' review of recorded video to identify motion in area(s) of interest, users can quickly isolate and play back relevant video for efficient review of significant activities.



Comprehensive and Flexible Recording Control

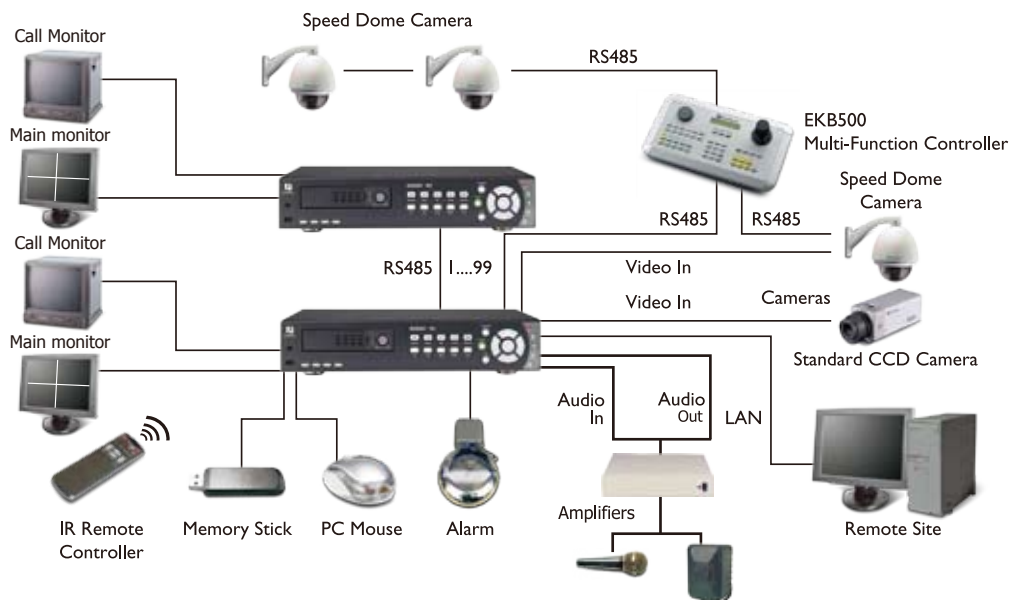
Resolution, frame rate, normal or event-only recording can be independently configured for different cameras and different times through comprehensive Schedule Recording setup. Recording parameter changes in response to event triggers can be set in combination for an optimal response to various applications and circumstances. In addition, audio recording is possible on up to 4 independent channels.



Specifications

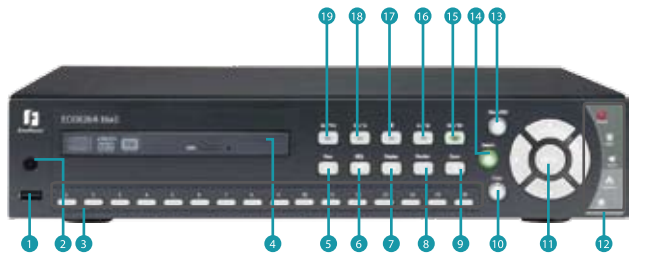
	ECOR264 x1		
Channels	16	9	4
Compression Format	H.264		
Recording Rate/Resolution (Max. total)	480 NTSC /400 PAL (CIF)	270 NTSC /225 PAL (CIF)	120 NTSC /100 PAL (CIF)
(fps rates per camera can be set independently up to the max total rate)	240 NTSC /200 PAL (2CIF)	240 NTSC /200 PAL (2CIF)	120 NTSC /100 PAL (2CIF)
Playback Rate/Resolution	120 NTSC /100 PAL (D1)		
	480 NTSC /400 PAL (CIF)	270 NTSC /225 PAL (CIF)	120 NTSC /100 PAL (CIF)
	240 NTSC /200 PAL (2CIF)	240 NTSC /200 PAL (2CIF)	120 NTSC /100 PAL (2CIF)
Dual Streaming	Smart remote viewing at CIF or D1 stream		
Mobile Devices	Yes		
Pentaplex Operation	Simultaneous Live, Recording, Playback, Archive and Remote Viewing		
Camera Inputs	16 BNC	9 BNC	4 BNC
Looping Camera Outputs	One per camera input (BNC)		
Video Outputs	Main VGA (800 x 600 ; 1280 x 1024) or BNC; Multiplex Call BNC		
Audio Input/Output (RCA)	4 Inputs / 1 Output		
Recording Mode	Continuous, Event and Schedule		
Playback Search	Time search, Event search, Smart search, Snapshot search		
Alarm Inputs	One per Video Input		
Alarm Outputs	4 Alarm Outputs		
Video Pause	Yes		
Video Loss Detection	Yes		
Motion Detection	Yes		
Event Log	Yes		
Watch Dog Timer	Yes		
HDD Support	1 Hot swappable / 2 Internal HDD		
External HDD	1 eSATA (reserved for future use),(Hot Swappable model does not support eSATA)		
Built-in DVD Burner	Slim Type DVD Burner (Optional)		
User Interface	Mouse/Front Panel Operated GUI(Graphical User Interface)		
OS	Embedded Linux		
Network/Protocol	10/100Mb/s Ethernet ; TCP-IP/DHCP/PPPoE/DDNS/SMTP/SSL/POP3/HTTP/NTP		
Control PTZ via OSD	Yes (via mouse or front panel)		
USB	2 USB 2.0 port (1 on Front Panel, 1 on Back Panel)		
Schedule Setting	Supports Express and Advanced Schedule Settings		
User Access	3 Levels of User Access Supported		
RS-232	Yes		
RS-485	Terminal connector		
Supported PTZ Protocols	EverFocus, Pelco D, Pelco P, Samsung, Transparent		
Power Source	12VDC – Power Supply Included		
Temperature	0°C~40°C / 32°F~104°F (20~80% humidity)		
Dimensions (L x W x H)	353.0 x 354.8 x 70.60 mm / 13.89" x 13.96" x 3.055"		
Certifications	CE, FCC, UL		

System Configuration



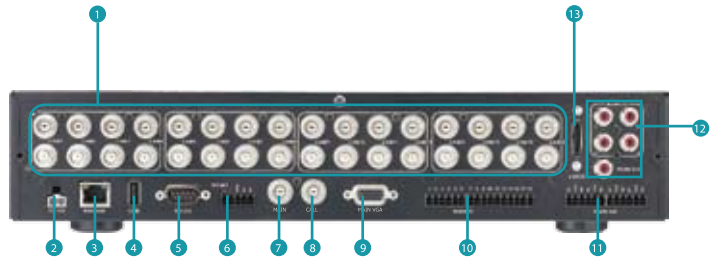
Major Operating Controls

ECOR264-16x1 Front Panel Design



- | | | |
|---|-------------------------|----------------------|
| 1 USB Port | 7 Display | 13 Menu/ESC |
| 2 Remote Control Receiver | 8 Monitor | 14 Search |
| 3 Channel Key (1~16) | 9 Zoom | 15 FF / Next Step |
| 4 Hot swappable 3.5" SATA HDD storage / DVD Burner (optional) | 10 Copy | 16 Play / Pause |
| 5 View | 11 Menu Navigation Keys | 17 Stop |
| 6 Sequence | 12 System LED | 18 Rev Play / Pause |
| | | 19 F Rev / Prev Step |

Back Panel Design

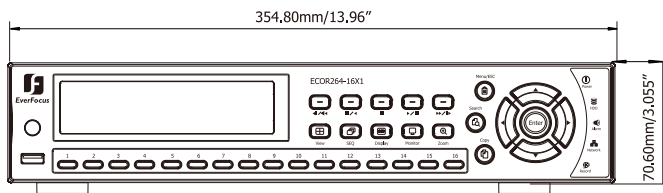


- | | | |
|---------------------------|-------------------|---|
| 1 Video Input and Looping | 6 RS485 Connector | 11 Alarm Out |
| 2 Power Plug | 7 Call Monitor | 12 Audio In/Out |
| 3 Network Connector | 8 Main Monitor | 13 eSATA (reserved for future use) (Hot Swappable model does not support eSATA) |
| 4 USB Port | 9 Main VGA | |
| 5 RS232 Connector | 10 Alarm In | |

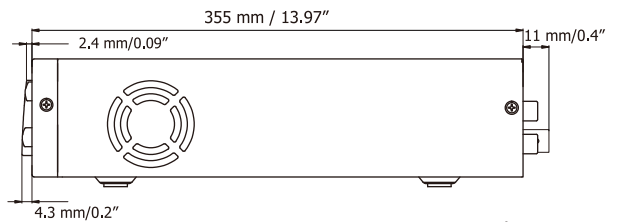
*Front & back panel controls vary depending on models

Dimensions

ECOR264-16x1



Front View



Side View

Wide Variety of Applications for Security Surveillance



Retail



Transportation



City Surveillance



Banking

Free Network Surveillance Management Software



Overview

- Supports MPEG-4 and H.264 devices
- Supports Paragon, Paragon264, ECOR, ECOR264, EDR & EDVR series DVR
- Supports Google and E-Map function
- Web Browser based UI
- Supports all EverFocus Nevio IP cameras and video servers

Playback and Search

- Supports multiple concurrent video and audio playback from DVR
- Searching can be queried based on channel: date, time and event type
- Supports multiple playback speeds in fast forward and fast reverse playback
- Supports multiple video and audio archive methods

Live Video Monitoring

- Supports configurable view layout and display presets for custom split screens with assigned DVR
- Supports remote viewing
- Multi-monitor support: video TV Wall via display terminal setting
- User grouping tree, device tree and map tree with filtered views
- Supports PTZ control, including preset patterns & tours
- Supports device drag and drop function on layout setting and device configuration
- Supports multiple monitors to display separate information
- View real-time alarms and alarm history





Focused on You.

EverFocus Electronics Corp.

EverFocus USA - California

TEL: +1 626 844 8888
sales@everfocus.com

EverFocus USA - New York

TEL: +1 631 436 5070
sales@everfocus.com

EverFocus Taiwan

TEL: +886 2 2698 2334
marketing@everfocus.com.tw

EverFocus Europe - Germany

TEL: +49 2822 93940
info@everfocus.de

EverFocus Europe - UK

TEL: +44 (0) 20 8649 9757
0845 430 9999
salesuk@everfocus.com

EverFocus Japan

TEL: +81 3 5625 8188
info@everfocus.co.jp

EverFocus China - Beijing

TEL: +86 10 6297 3336~39
marketing@everfocus.com.cn

EverFocus China - Shenzhen

TEL: +86 755 2765 1313
marketing@everfocus.com.cn

EverFocus India

TEL: +91 22 6128 8700
sales@everfocus.in

Notice:

© 1995~2012 EverFocus Electronics Corp. The EverFocus trademark is registered by EverFocus Electronics Corp. All rights reserved. Product features and specifications are subject to change without notice. No parts or contents of this datasheet may be reproduced or transmitted in any form or by any means without permission from EverFocus.

- * Not all models featured are available in all countries. For accessories and other products information, please visit www.everfocus.com.tw
- * All photographs in this datasheet were taken for the purpose of explanation; actual images may differ.