

Owner's Manual & Safety Instructions

Save This Manual Keep this manual for the safety warnings and precautions, assembly, operating, inspection, maintenance and cleaning procedures. Write the product's serial number in the back of the manual near the assembly diagram (or month and year of purchase if product has no number). Keep this manual and the receipt in a safe and dry place for future reference.

REV 15b

SIT-OR-STAND BEHIND ROLLING WALKER



ITEM 62547

Visit our website at: <http://www.harborfreight.com>
Email our technical support at: productsupport@harborfreight.com

When unpacking, make sure that the product is intact and undamaged. If any parts are missing or broken, please call 1-888-866-5797 as soon as possible.

Copyright© 2015 by Harbor Freight Tools®. All rights reserved.
No portion of this manual or any artwork contained herein may be reproduced in any shape or form without the express written consent of Harbor Freight Tools. Diagrams within this manual may not be drawn proportionally. Due to continuing improvements, actual product may differ slightly from the product described herein.
Tools required for assembly and service may not be included.

⚠ WARNING

**Read this material before using this product.
Failure to do so can result in serious injury.
SAVE THIS MANUAL.**

IMPORTANT SAFETY INFORMATION

Assembly Precautions

1. Assemble only according to these instructions. Improper assembly can create hazards.
2. Wear ANSI-approved safety goggles and heavy-duty work gloves during assembly.
3. Keep assembly area clean and well lit.
4. Keep bystanders out of the area during assembly.
5. Do not assemble when tired or when under the influence of alcohol, drugs or medication.
6. Weight capacity and other product capabilities apply to properly and completely assembled product only.

Use Precautions

1. Use as intended only. **Do not use as wheelchair, as a stepstool, or to carry people. Do not push the walker with someone sitting on it. Use the Seat only as a seat; do not place other objects on the seat.**
2. **Consult your physician before using this Walker. Make sure that this is the appropriate type of walker for your current physical condition.** This product should only be used by a person who has the physical capability to safely walk and sit on this device. A standard walker or a two wheeled walker will typically offer more stability, but less mobility than this walker.
3. **Get training from your physician on proper Walker use for your condition before using this Walker.**
4. This Walker may not be suitable for uneven or soft surfaces, such as, but not limited to deep carpet, ridged carpet, and door frames.
5. Open the Walker fully so that the hinge extends fully and put the Seat down before use.
6. Adjust handles to suit user and to equal height and then securely tighten Height Adjustment Knobs before use. Apply gentle pressure to Handles to check Walker stability before use.
7. Wear well-fitting, non-slip footwear when using the Walker.
8. Check Brakes before use. If Wheels can turn while Brakes are locked, have a qualified technician adjust Brakes. **DO NOT** use Walker if Brakes do not work properly.
9. Lock Brakes before sitting on Seat. Do not sit on Seat unless on even, level ground. Make sure brakes are locked while seated and before getting up out of the seat.
10. Inspect before every use; do not use if parts are loose or damaged. Check for wear and tear and the tightness of all hardware.
11. Inspect and maintain this walker at least every month. If you are unable to inspect and maintain this walker every month, have a qualified technician do so every month.
12. Do not exceed listed weight capacity of 300 lb. **Be aware of dynamic loading!** Sudden load movement may briefly create excess load causing product failure.
13. This product is not a toy. Do not allow children to play with or near this item.
14. Maintain product labels and nameplates. These carry important safety information. If unreadable or missing, contact Harbor Freight Tools for a replacement.
15. **WARNING:** This product contains di (2-ethylhexyl) phthalate (DEHP), a chemical known to the State of California to cause cancer and birth defects or other reproductive harm. (California Health & Safety Code § 25249.5, *et seq.*)

Specifications

Weight Capacity	300 lb.
Seat Height	20"
Seat Dimensions	12" x 12"

Assembly Instructions



Read the **ENTIRE IMPORTANT SAFETY INFORMATION** section at the beginning of this document including all text under subheadings therein before set up or use of this product.

1. Press in buttons on Backrest poles while carefully inserting Backrest into Backrest Brackets until buttons snap into holes.
2. Loosen the Height Adjustment Knobs on both sides of the Walker.
3. Insert the Right Handlebar into the tube on the right side of the frame. Route the Brake Cable outside the Hinge area of the Walker to prevent damage when folding/unfolding.
4. Insert the Left Handlebar into the tube on the left side of the frame. Route the Brake Cable outside the Hinge area of the Walker to prevent damage when folding/unfolding.
5. Adjust the Handlebars to equal height, and tighten both Height Adjustment Knobs securely.

Set up Instructions: Before use



Read the **ENTIRE IMPORTANT SAFETY INFORMATION** section at the beginning of this document including all text under subheadings therein before set up or use of this product.

Handlebar Adjustment

1. Loosen the Height Adjustment Knobs on both sides of the Walker.
2. Adjust both Handlebars so the grips are at the same level as your wrists if you are standing upright with your arms hanging relaxed at your sides.
3. Tighten both Height Adjustment Knobs securely.

WARNING! TO PREVENT SERIOUS INJURY, adjust both Handlebars to the same height and lock them securely in place.

Brake Check

1. Check the right brake operation by squeezing the right Handbrake and making sure the rear right Wheel cannot turn while it is squeezed.
2. Check the brake lock by pushing the right Handbrake down, letting go of it, and making sure that the rear right Wheel cannot turn. Pull up on the right Handbrake after checking to release it.
3. Check the left Handbrake also according to steps 1 and 2.

WARNING! TO PREVENT SERIOUS INJURY, if either brake does not function reliably, do not use the Walker until the Brakes are properly adjusted or repaired.

Operation Instructions



Read the **ENTIRE IMPORTANT SAFETY INFORMATION** section at the beginning of this document including all text under subheadings therein before set up or use of this product.

Get training from your physician on proper Walker use for your condition before using this Walker.

Walking Use

1. Open Walker completely, lay seat down, and make sure that the Hinge is pushed down flat.
2. Inspect before every use; do not use if parts are loose or damaged. Check for wear and tear and the tightness of all hardware.
3. Check Handlebar height and Brake tension and adjust as needed before every use, see page 3.
4. Apply gentle pressure to Handles to check Walker stability.
5. Move the Walker steadily, do not push the Walker so far away that you lose your balance.
6. Keep your hands on the Hand Grips.
7. If you wish to slow down or stop, squeeze both the Handbrakes at the same time. Do not squeeze just one of the Handbrakes.
8. To keep the Walker from rolling, press down on both the Handbrakes until they click into place. To allow the Walker to roll again, pull up on both of the Handbrakes slightly to disengage them.

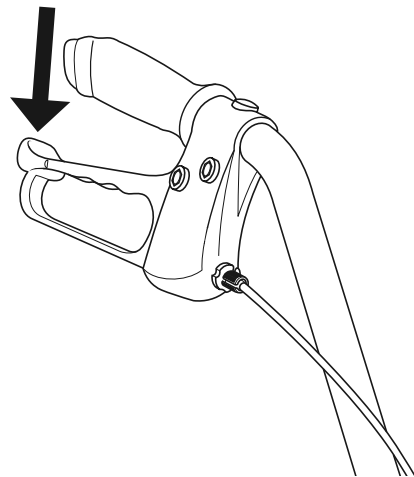


Figure A: Push Handbrake Down to Lock Wheel

Sitting

1. Check Brake tension and adjust as needed before every use, see page 3.
2. Open Walker completely, lay seat down, and make sure that the Hinge is pushed down flat. Make sure the Backrest is properly installed.
3. Make sure the walker is on a hard, level surface to prevent tipping and movement.
4. To keep the Walker from rolling, lock Brakes before sitting on seat by pressing down on both the Handbrakes until they click into place.
5. Back into the Walker slowly until the backs of your legs touch the Seat.
6. Grasp the Hand Grips firmly, and sit on the Seat.
7. Do not move the walker while seated.
8. To stand up, make sure Handbrakes are still locked down, grasp the Hand Grips firmly, and use your arms to help yourself stand.

Folding

1. Fold up the Seat.
2. Pull up on the strap underneath the Seat to fold the Hinge.

Maintenance Instructions



Procedures not specifically explained in this manual must be performed only by a qualified technician.

WARNING

TO PREVENT SERIOUS INJURY FROM PRODUCT FAILURE:

Do not use damaged equipment. If abnormal noise or vibration occurs, have the problem corrected before further use.

Cleaning, Maintenance, and Lubrication

1. **BEFORE EACH USE**, inspect the general condition of the Walker. Check for:
 - loose or incorrectly adjusted brakes,
 - loose hardware and wheels,
 - misalignment or binding of moving parts,
 - cracked or broken parts, and
 - any other condition that may affect its safe operation.
2. **AFTER USE**, wipe external surfaces of the Walker with clean cloth.
3. On a regular basis, have a qualified technician check the condition and safety of this Walker. Eventually this Walker will wear out and can no longer be used safely. Do not use an unsafe Walker.

Brake Adjustment

1. **Brake adjustment is needed if:**
 - a. One Wheel or the other does not completely stop when the Handbrakes are squeezed.
 - b. One Wheel or the other does not completely stop when the Handbrakes are pressed down into their locked position.
 - c. If the Wheels do not turn freely with the Handbrakes in the neutral position.

OR

 - d. If the Handbrakes require too much force to engage or disengage them.

Note: Since the Brake Cables will stretch over time, Brake Cable adjustment is a normal part of maintenance.

2. Put both Handbrakes in their neutral position. If the Handbrakes are locked, pull up on both of them slightly to disengage them.

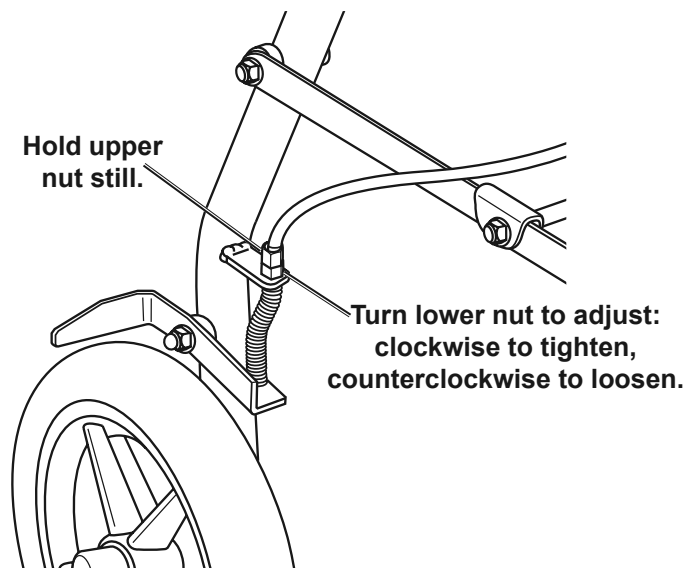


Figure B

3. Using two small wrenches (sold separately) hold the upper cable end still while turning the nut underneath to adjust Brake Cable tension:
 - Turn the nut **clockwise to tighten** the Brakes.
 - Turn the nut **counterclockwise to loosen** the Brakes.
4. **WARNING! THOROUGHLY test the Brakes after adjustment. Do not use this Walker with untested Brakes.**

PLEASE READ THE FOLLOWING CAREFULLY

THE MANUFACTURER AND/OR DISTRIBUTOR HAS PROVIDED THE PARTS LIST AND ASSEMBLY DIAGRAM IN THIS DOCUMENT AS A REFERENCE TOOL ONLY. NEITHER THE MANUFACTURER OR DISTRIBUTOR MAKES ANY REPRESENTATION OR WARRANTY OF ANY KIND TO THE BUYER THAT HE OR SHE IS QUALIFIED TO MAKE ANY REPAIRS TO THE PRODUCT, OR THAT HE OR SHE IS QUALIFIED TO REPLACE ANY PARTS OF THE PRODUCT. IN FACT, THE MANUFACTURER AND/OR DISTRIBUTOR EXPRESSLY STATES THAT ALL REPAIRS AND PARTS REPLACEMENTS SHOULD BE UNDERTAKEN BY CERTIFIED AND LICENSED TECHNICIANS, AND NOT BY THE BUYER. THE BUYER ASSUMES ALL RISK AND LIABILITY ARISING OUT OF HIS OR HER REPAIRS TO THE ORIGINAL PRODUCT OR REPLACEMENT PARTS THERETO, OR ARISING OUT OF HIS OR HER INSTALLATION OF REPLACEMENT PARTS THERETO.

Parts List and Diagram

Parts List

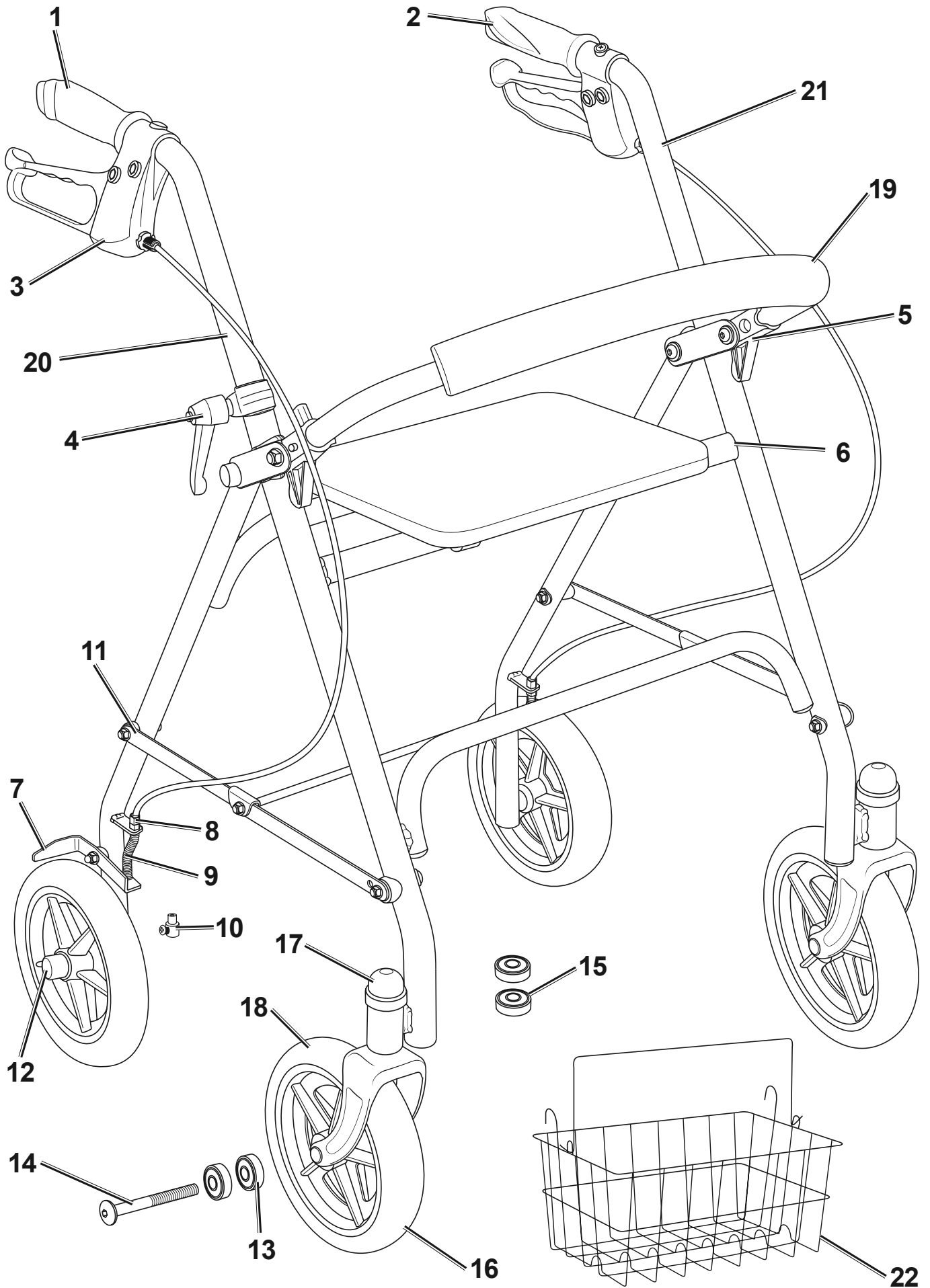
Part	Description	Qty	Part	Description	Qty
1	Right Hand Grip	1	12	Axle Cap	4
2	Left Hand Grip	1	13	Axle Bearing	8
3	Handbrake and Cable	2	14	Front Axle Bolt	2
4	Height Adjustment Knob	2	15	Pivot Bearing	4
5	Backrest Bracket	2	16	Wheel	4
6	Seat	1	17	Pivot Cap	2
7	Brake Arm	2	18	Fork	2
8	Cable Adjuster	2	19	Backrest	1
9	Cable Spring	2	20	Right Handlebar	1
10	Cable Fastener	2	21	Left Handlebar	1
11	Hinge Asm.	1	22	Basket	1

Record Serial Number Here: _____

Note: If product has no serial number, record month and year of purchase instead.

Note: Some parts are listed and shown for illustration purposes only, and are not available individually as replacement parts.

Assembly Diagram



Limited 90 Day Warranty

Harbor Freight Tools Co. makes every effort to assure that its products meet high quality and durability standards, and warrants to the original purchaser that this product is free from defects in materials and workmanship for the period of 90 days from the date of purchase. This warranty does not apply to damage due directly or indirectly, to misuse, abuse, negligence or accidents, repairs or alterations outside our facilities, criminal activity, improper installation, normal wear and tear, or to lack of maintenance. We shall in no event be liable for death, injuries to persons or property, or for incidental, contingent, special or consequential damages arising from the use of our product. Some states do not allow the exclusion or limitation of incidental or consequential damages, so the above limitation of exclusion may not apply to you. THIS WARRANTY IS EXPRESSLY IN LIEU OF ALL OTHER WARRANTIES, EXPRESS OR IMPLIED, INCLUDING THE WARRANTIES OF MERCHANTABILITY AND FITNESS.

To take advantage of this warranty, the product or part must be returned to us with transportation charges prepaid. Proof of purchase date and an explanation of the complaint must accompany the merchandise. If our inspection verifies the defect, we will either repair or replace the product at our election or we may elect to refund the purchase price if we cannot readily and quickly provide you with a replacement. We will return repaired products at our expense, but if we determine there is no defect, or that the defect resulted from causes not within the scope of our warranty, then you must bear the cost of returning the product.

This warranty gives you specific legal rights and you may also have other rights which vary from state to state.