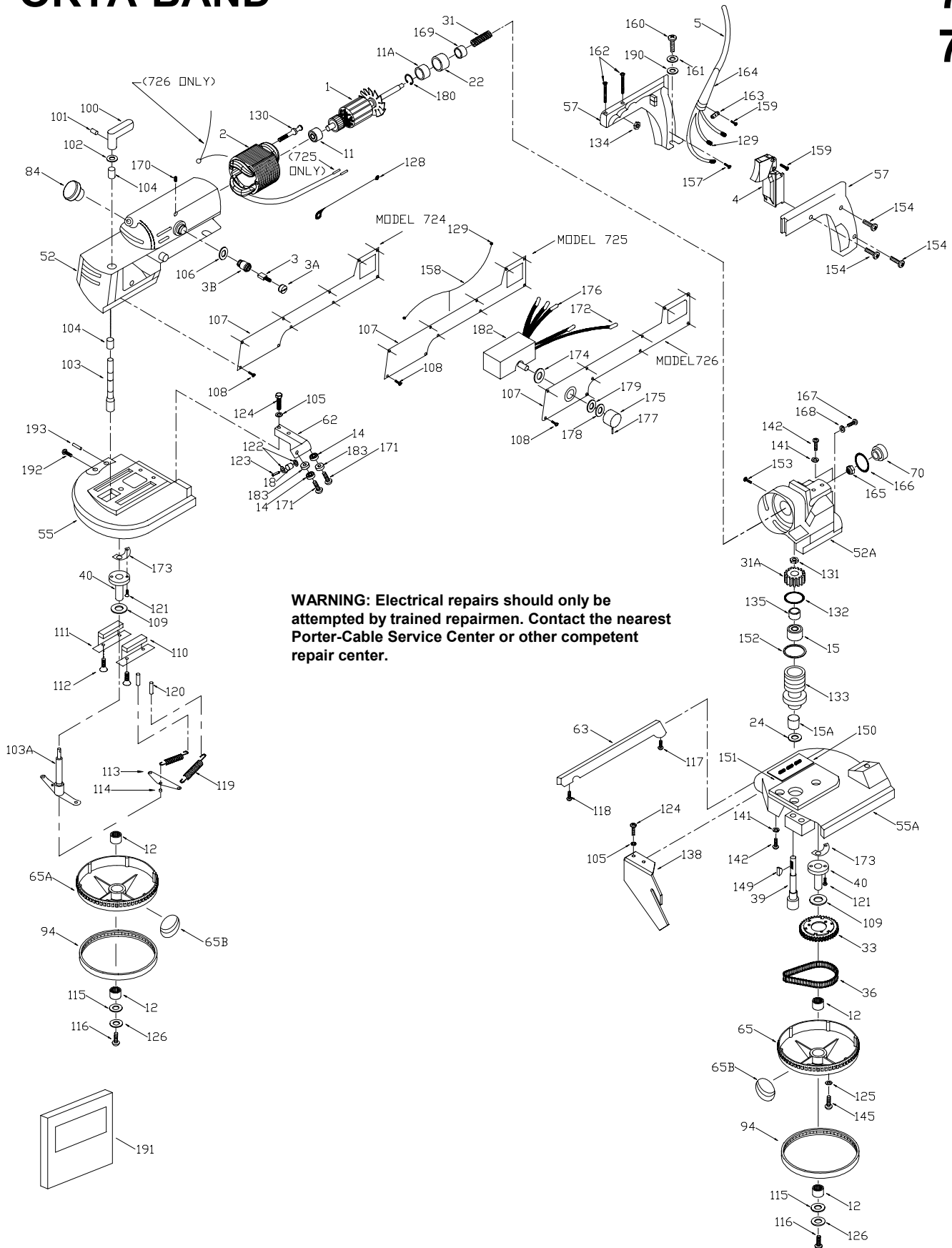


# PORTER-CABLE

## PORTA-BAND®

724  
725  
726



**WARNING: Electrical repairs should only be attempted by trained repairmen. Contact the nearest Porter-Cable Service Center or other competent repair center.**

724  
725  
726

Ref.	No.	Part No.	Description	Ref.	No.	Part No.	Description
	1	692116**	Armature, 115V, T3		119	804389	Tension Spring
		861005	Armature, 115V, T1 & T2		120	867693	Spring Stud, T2, T3
		861074	Armature, 220V, T1 CF			803575	Spring Stud, T1
	2	861006	Field, 115V (724) T1, T2, T3		121	845619**	Self Tapping Screw Current, T2, T3
		861007	Field, 115V (725) T1, T2, T3			802289	Mach. Screw, (T1, Early T2)
		861008	Field, 115V (726) T1, T2, T3		122	861664	Washer, T2, T3
		861075	Field, 220V (724) T1 CF			802606**	Washer, T1
		861076	Field, 220V (725) T1 CF		123	861663	Pin, T2, T3
	3	859179	Brush			802603**	Screw, T1
	3A	801538	Brush Cap		124	866061	Screw
	3B	801519	Brush Holder		125	802417**	Washer
	4	864459	Switch (Plastic Handles)		126	863134	Pulley Washer
		843156	Switch (Metal Handles)		128	803105	Brush/Switch Lead, (724, 725)
	5	802787	Cord W/O Strain Reliever, 115V		129	849314	Terminal
	n	875863	Cord W/Strain Reliever, 220V (725)		130	838312	Field Screw
	11	855284	Commutator Bearing		131	805011	Gear Ret. Ring, T3
	11A	855193**	Bearing			804301	Gear Nut, T1, T2
	12	803858	Pulley Bearing		132	802302	Lock Ring
	14	855196**	Guide Outer Bearing		133	802897	Jackshaft Carrier
	15	855193	Bearing		134	869687	Nut
	15A	803856	Lower Shaft Bearing		135	691721	Spacer, T3
	18	855195**	Guide Inner Bearing		138	858932**	Guide Stop, T2, T3
	22	691809	Armature Shaft Seal, T3			804562**	Guide Stop, T1
		802601**	Armature Shaft Seal, T1, T2		141	802687	Lockwasher
	24	876800	Jackshaft Seal		142	n 849235	Housing Screw
	31	692100	Worm, T3		145	875660	Drive Pulley Screw
		841698	Worm, T1, T2		149	804424	Jackshaft Key
	31A	691722	Worm Gear, T3		150	847090	Blade Chart, T1, T2, CF
		841699	Worm Gear, T1, T2		151	801896	Chart Screw, T1, T2
	33	874077	Driven Sprocket		152	803665	O-Ring
	36	802524**	Chain		153	846744	Carrier Screw
	39	691723**	Jackshaft, T3		154	860220	Cover Screw
		802265	Jackshaft, T1, T2		157	802764	Ground Screw, T3
	40	803458	Pulley Shaft			844107	Ground Screw, T1, T2
	52	857835**	Motor Housing		158	841693	Switch/Select. Lead, (725)
	52A	692037	Gear Housing, T3		159	860715	Screw, T2, T3
		852682	Gear Housing, T1, T2 CF		160	802158	Handle Bolt
	55	865223**	Front Pulley Hsg., T2, T3		161	801377	Handle Washer
		852700**	Front Pulley Hsg., T1		162	687960	Handle Top Screw
	55A	865226**	Rear Pulley Hsg., T2, T3		163	861434	Cord Clamp
		852680**	Rear Pulley Hsg., T1		164	810716	Reliever
	57	864707**	Handle Set Incl.: Ref. 134 154, 159, 163, 164		165	801372	Worm Nut
					166	804177	Plug Gasket
	62	861799	Blade Guide, T2, T3		167	838733	Housing Screw
	62	863417**	Blade Guide, T1		168	803017	Lockwasher
		867950	Blade Guide Assy., T2, T3 Incl.: Ref. 14, 18, 62, 105, 122, 123, 124, 171, 183		169	804214	Oil Slinger, T1, T2 (Only)
		694978	Blade Guide Hardware, T2, T3 Incl.: Ref. 14, 18, 105, 122 123, 124, 171, 183		170	802200	Brush Holder Screw
					171	884286**	Screw
	62A	863418**	Rear Blade Guide, T1		172	845289	Control/Switch Lead, (726) CF
	63	853328	Blade Guard		173	853338	Shim - .0035 (As required)
	65	844866	Drive Pulley			692203	Shim - .0075 (As required)
	65A	844867	Driven Pulley		174	847115	Control Retainer, (726) CF
	65B	692987	Caplug		175	844595	Knob, (726)
	70	804167	Plug		176	802303	Connector, (726)
	84	839279	Knob		177	847002	Knob Screw, (726)
	94	844868	Tire		178	851584	Washer, (726)
	100	865398	Tension Knob		179	846440	Bushing, (726)
	101	802329	Pin		180	844571**	Snap Ring, T3
	102	803745	Washer		182	859325**	Speed Control, (726) CF
	103	694988**	Tension Shaft/Yoke Assy.		183	863569**	Roller Guide
	103A	694988**	Tension Shaft/Yoke Assy. (Current)		190	801821	Washer
					191	867349**	Hardware Kit
	104	803390**	Bushing, (Early Models Only) CF		192	858008	Screw (Current Version Only)
	105	839686	Lockwasher, T2, T3		193	801710	Wear Pin (Current Version Only)
	n	802417**	Washer, T1		*	803105	Field Lead
	106	802223	Brush Holder Washer		*	844607	Armature Fan, T1, T2
	107	851347	Spec Plate, (724)		*	847976	Armature Fan, T3 CF
		851357	Spec Plate w/Switch (725). Incl.:				
		878712	Switch		*	803442	Lubricant - 5 1/2 oz., (1.5 oz. Req'd.)
		802424	Rivet		*	803443	Gear Lubricant - 1 gal.
		855071	Spec Plate W/Switch (725V) CF		n	897146	Carrying Case
		851371	Spec Plate, (726)		**		Not Shown
	108	858008	Plate Screw				See Service Notes
	109	803679	Shaft Washer				
	110	803254	Slide Block				
	111	801135	Block Plate				
	112	802598	Plate Screw				
	113	803600**	Yoke, (Early)				
	114	802099**	Yoke Ring, (Early)				
	115	803435	Pulley Washer				
	116	847213	Pulley Screw				
	117	844009	Self Tapping Screw, (Current)				
		803338	Machine Screw, (Early)				
	118	804547	Front Guard Screw				

**ACCESSORIES: (Optional)**

*	803442	Lubricant - 5 1/2 oz., (1.5 oz. Req'd.)
*	803443	Gear Lubricant - 1 gal.
*	n 897146	Carrying Case

\*\* Not Shown  
See Service Notes

# SERVICE NOTES

724

725

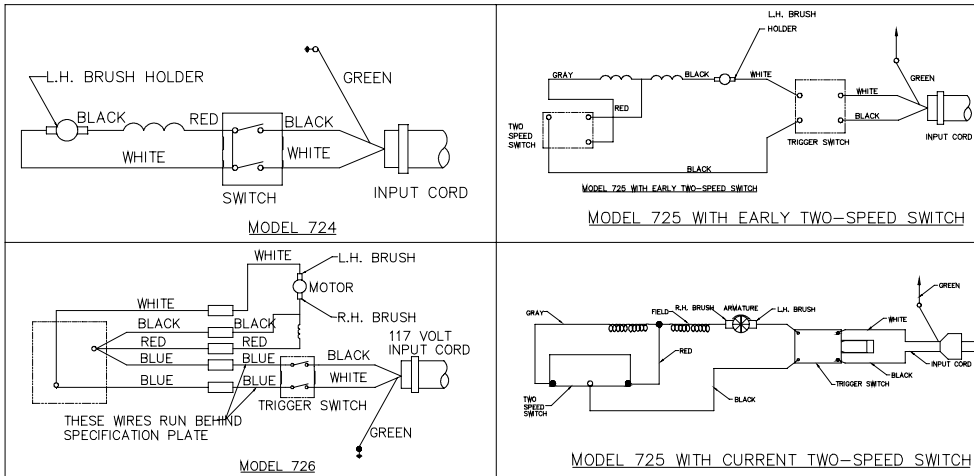
726

## NEW HANDLE SET USED WITH OLD CORD

When handle set #864707 is used with old cord #802791, it will be necessary to cut off reliever and re-strip cord wires.

## WIRING DIAGRAM

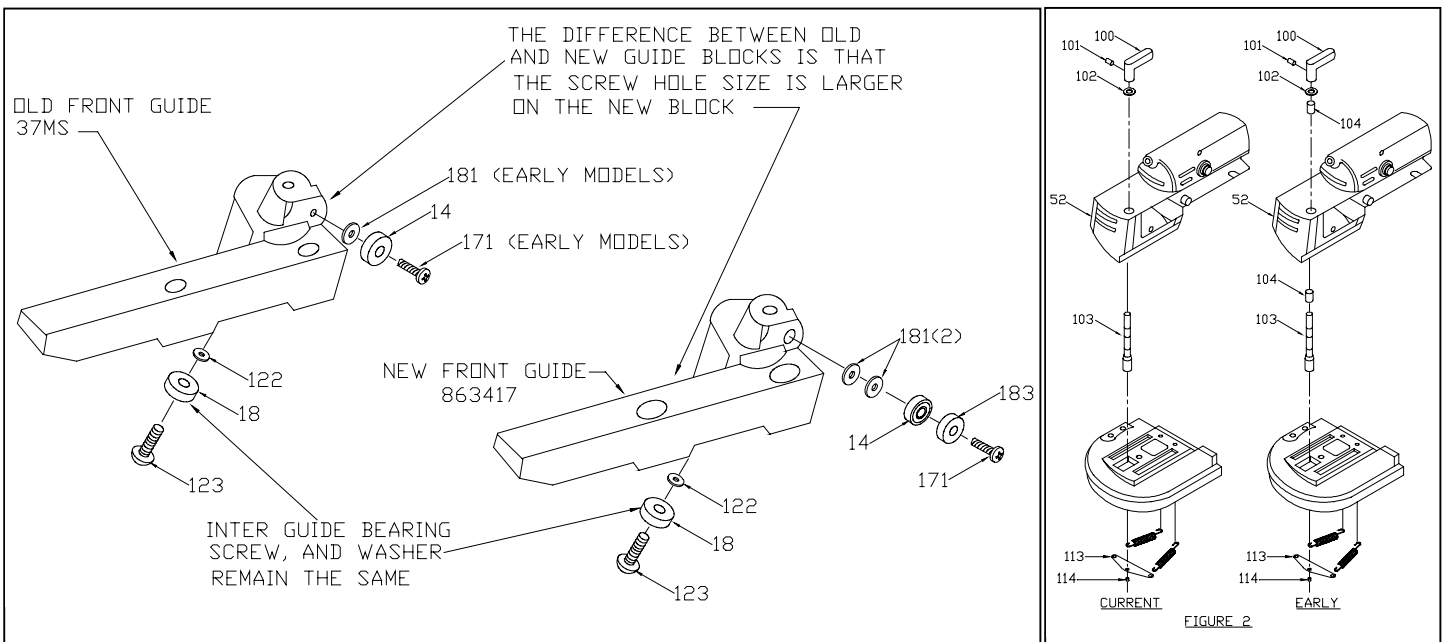
### 726 SPEED CONTROL (182)



Speed control (859325) is no longer available. Rewire tool as single speed Model 724 or convert to two speed Model 725 by adding switch/spec plate 851357 and field 861007.

## ORIGINAL BLADE GUIDE CONVERSION TO TYPE 1 (SEE FIGURE 1)

Original Models incorporated to a different blade guide style other than the Type 1.



## TENSION SHAFT (102 (/MOTOR HOUSING (52) (SEE FIGURE 2)

Currently produced models incorporate a larger diameter shaft which eliminates the use of #813390 (104) Bushing. The early type shaft cannot be used in the current housing. The current type shaft can be used in the early type housing by removing the two #803390 (104) bushing. The #803390 bushing are no longer available.

# 724 725 726

## SERVICE NOTES

### TENSION SHAFT/YOKE ASSEMBLE (103A)

Early version - yoke (113) is held onto tension shaft (103) by a snap ring (114). Current version - yoke and tension shaft are serviced as an assembly (103A). The yoke and shaft assembly (103A) is used to service all versions.

### YOKE NO. 803600

Some early type yokes did not have the stop formed in them as the current types do. When replacing the current tension shaft on a machine that has an early type yoke, replacement of the yoke is necessary.

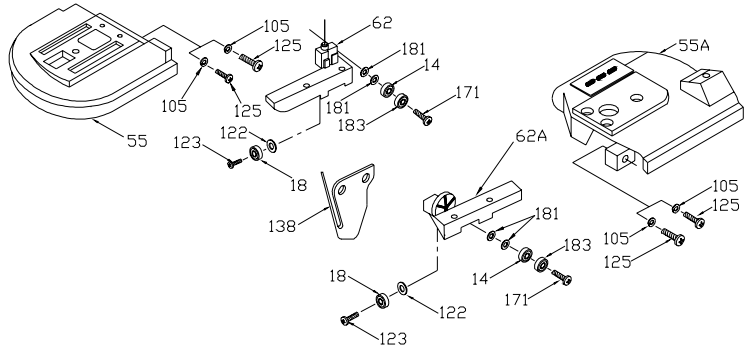
### HARDWARE KIT

Hardware kit includes the following reference numbers for use when complete tear down is required: 3, 3A, 22, 24, 108, 108, 112, 115, 116, 117, 118, 121, 122, 123, 124, 125, 127, 129, 134, 141, 142, 145, 152, 153, 154, 157, 159, 161, 162, 166, 167, 168, 171, 173, 181, 183, 190.

### PULLEY HOUSINGS AND BLADE GUIDES TYPE1

Listed below are the parts used only on Type 1 units.

<u>Ref. No.</u>	<u>Part No.</u>	<u>Description</u>
14	855196	Guide Outer Bearing
18	855195	Guide Inner Bearing
55	852700	Front Pulley Hsg.
55A	852680	Rear Pulley Hsg.
62	863417	Blade Guide
62A	863418	Rear Blade Guide
105	802417	Washer
122	802606	Washer
123	802603	Screw
125	804309	Screw .625" Short
	802688	Screw .875" Long
138	804562	Guide Stop
171	884286	Screw
181	863703	Washer
183	863569	Roller Guide



### PULLY SHAFT SCREWS REF. #121

The countersinks of the pulley shaft (803458) mounting holes have been increased to accept the larger head of a self-tapping screw (845619). Current Type 2 pulley housings use self-tapping screws while Type 1 and early Type 2 used machined screws. The current self-tapping screw cannot be used with early pulley shaft because of its larger head. Early machine screw (802836) is still available and can be used with current pulley housing and shaft, provided you tap the (4) mounting holes with an 8-32 thread through the housing.

### ARMATURE SHAFT SEAL

On Types 1 & 2, the positions of the armature shaft seal Ref. 22 and armature bearing Ref. 11A are reversed from what is pictured for Type 3 Models.

### CHAIN/SPROCKET/JACKSHAFT

Model 725, Type 3, S/N 96222 through 100088, were built using single-row drive chain (Ref. 36), sprocket (Ref. 33) and Jackshaft (Ref. 39).

All other units are built using double-row components.

Single-row components will not be available for service. Any unit requiring replacement of a single-row component (chain, sprocket, or jackshaft) should be converted to the double-row system by installing: chain 802524, sprocket 802375, and jackshaft 691723.

### 725 T3 ARMATURE & SNAP-RING

Model 725 T3 bandsaws between serial numbers 256614 and 267590 were built with special armatures. These armatures require the use of an extra #844571 snap-ring. The extra snap-ring is used as a spacer between the fan end bearing and the standard snap-ring (Ref. 180). The commutator end bearing must also be pressed against the shoulder of the armature shaft. If the original armature is replaced, the extra snap-ring must be omitted.