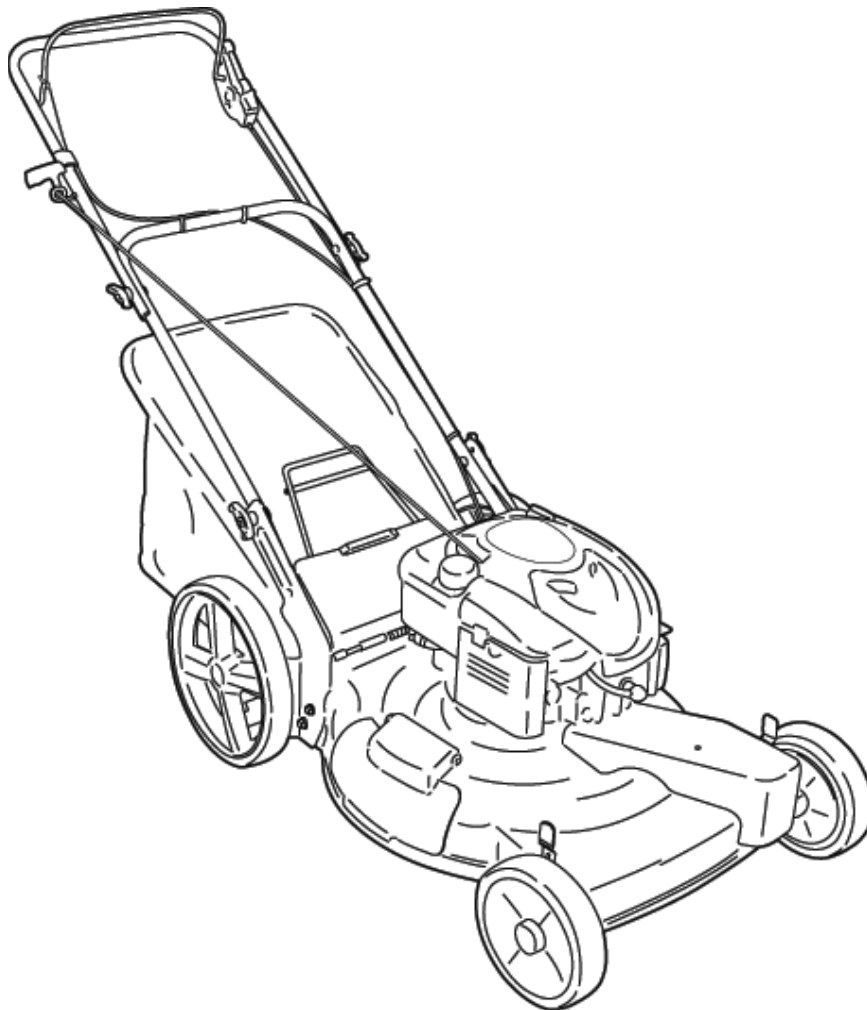


7800477 - BTP22675HW

Parts Manual



Manual Part No. 7006274

Revision A

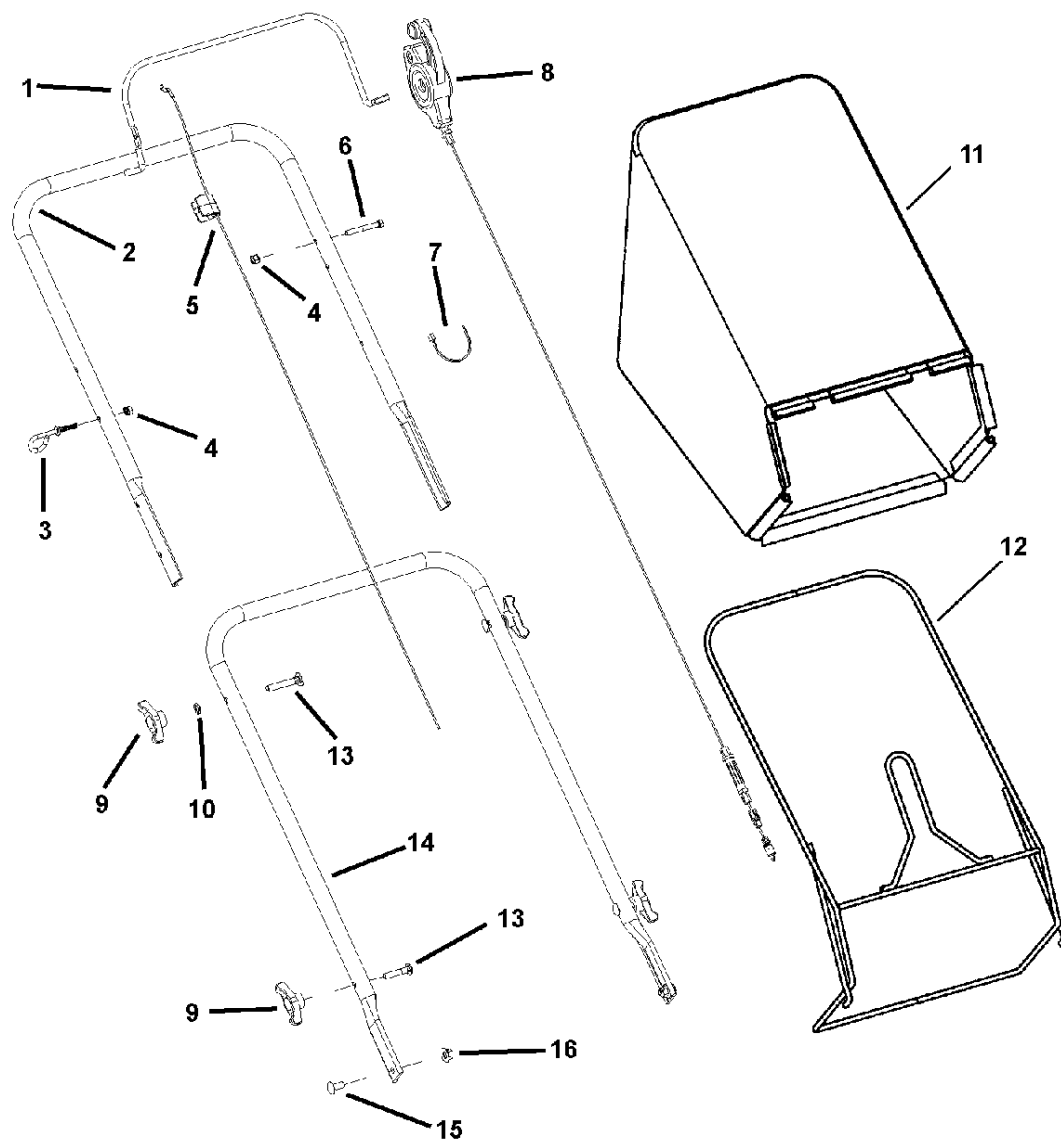
Rev. Date 02/2009

PRODUCT COMPONENTS	PAGES
Handle & Bag Group	4
Engine, Blade & Deck Group	6
Wheels & Covers Group	8
Decal Group	12
Torque Specification Chart	Inside Back Cover

Not for
Reproduction

Handle & Bag Group

NOTE: Unless noted otherwise,
use the standard hardware torque
specification chart.



The above parts group applies to the following Mfg. Nos.:

7800477 - BTP22675HW

Handle & Bag Group

REF NO	PART NO.	QTY.	DESCRIPTION
1	7101676AMA	1	BAIL, OPC PROPELLED
2	7300705AMA	1	HANDLE, UPPER, PROPELLED
--	7023810YP	1	FOAM GRIP, 18.75 (on upper handle, not shown)
3	071530MA	1	GUIDE, ROPE (1/4-20 thread)
4	7076978SM	2	NUT, HEX, 1/4C NYL RNG
5	7101861MA	1	CABLE, BAIL, HW PROPELLED
6	025X14MA	1	BOLT, HEX .25-20 X 2.00
7	7024649YP	4	WIRE TIE, 11 INCH STD BLK NYLON
8	1101670MA	1	CONTROL, DRIVE, SINGLE SPEED
9	7035744YP	4	KNOB, 5/16-18 WING (BLACK)
10	7090391SM	4	LOCKWASHER, 5/16
11	7102573YP	1	BAG, CLOTH, GRASS BAG
12	7101230AYP	1	FRAME, BAG 22"
13	7091740SM	4	BOLT, 5/16-18 X 2 GR2 was 7091189YP
14	7301013AYP	1	HANDLE, LOWER (2009)
15	7091508SM	2	BOLT, 5/16-18 X 3/4 GR5 YZ
16	7090951SM	2	NUT, HEX, 5/16-18 BLACK

Not for
Reproduction

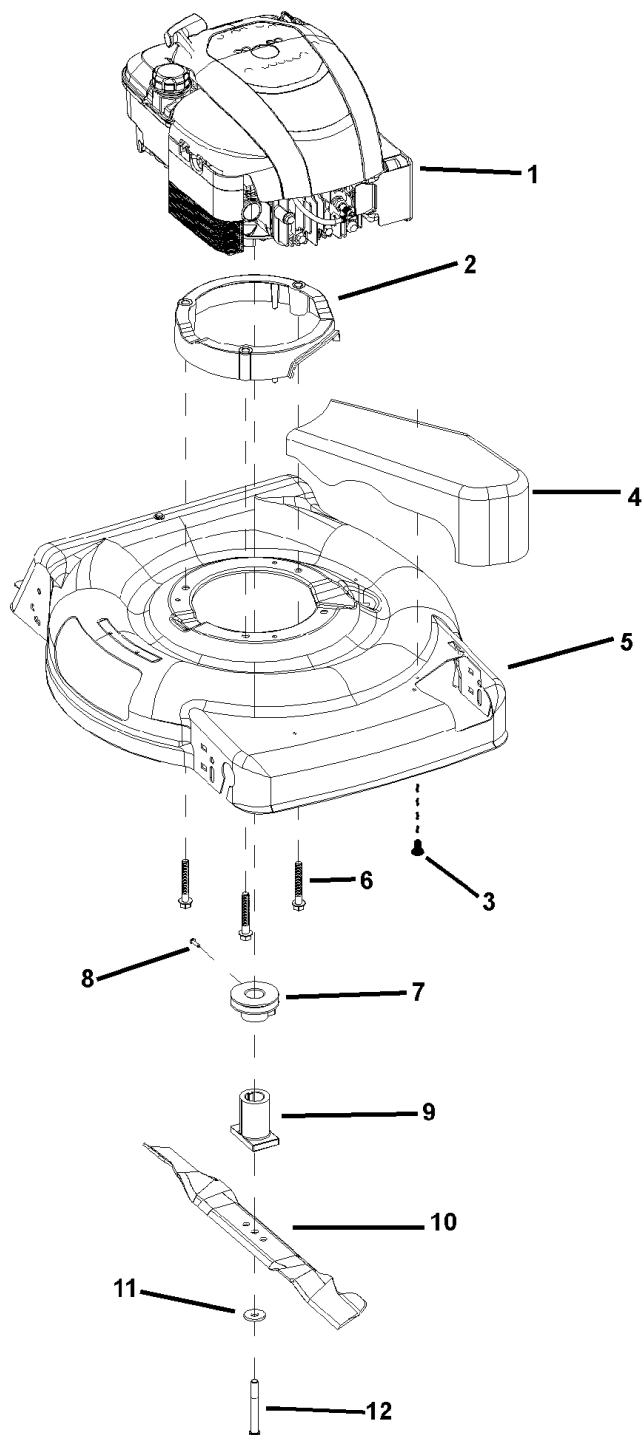
Footnotes

The above parts group applies to the following Mfg. Nos.:

7800477 - BTP22675HW

Engine, Blade & Deck Group

NOTE: Unless noted otherwise,
use the standard hardware torque
specification chart.



The above parts group applies to the following Mfg. Nos.:

7800477 - BTP22675HW

Engine, Blade & Deck Group

REF NO	PART NO.	QTY.	DESCRIPTION
1	--	1	* ENGINE, B&S, 6.75GT Mod. 126T02-0675-B3
2	7101449YP	1	ASSY, ENGINE SPACER , 22 WBM, PROPELLED (incl. 3 bushings, p/n 7101448)
3	7900018YP	1	SCREW, Round Washer Head Torx, Hi-Lo
4	1101596MA	1	COVER, BELT 22" (same look except no top hole)
5	7300400ZMA	1	DECK, 22 WALK, 3-N-1
6	025X11MA	3	BOLT, 3/8-16 NS X 2.50"
7	7100763MA	1	PULLEY, ENGINE, 22 DECK, SS
8	26X303MA	1	SCREW, #8-11 X .63 POLY
9	7100740YP	1	HUB, BLADE, 22 DECK
10	7100851AYP	1	BLADE, 22, WALK MOWER
11	1101989MA	1	WASHER, BELLVILLE, .38 ID X 1.183 OD
12	01X144MA	1	BOLT, HEX HEAD, 3/8-24 NF X 3.25

Not for
Reproduction

Footnotes

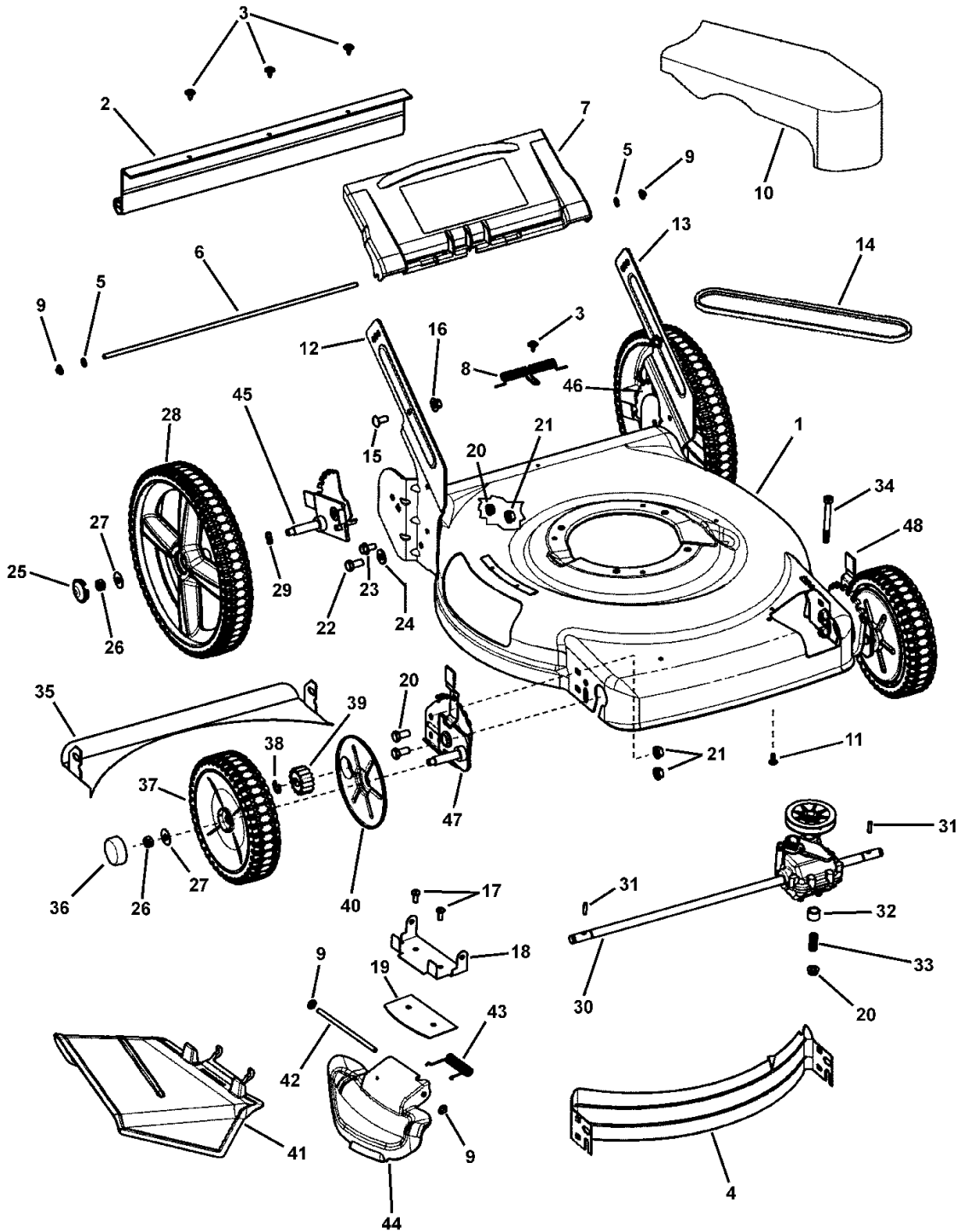
NOTE: * Purchase engine parts from engine manufacturer dealer.

The above parts group applies to the following Mfg. Nos.:

7800477 - BTP22675HW

Wheels & Covers Group

NOTE: Unless noted otherwise,
use the standard hardware torque
specification chart.



The above parts group applies to the following Mfg. Nos.:
7800477 - BTP22675HW

Wheels & Covers Group

REF NO	PART NO.	QTY.	DESCRIPTION
1	7300400ZMA	1	DECK, 22 WALK, 3-N-1
2	1101105MA	1	GUARD, REAR 22 HW (19-1/2 long) was 721685 (18-1/4 long)
3	7091286YP	4	HWST, 10-24X.50 SEMS
4	7300440ZMA	1	BAFFLE, FRONT, 22 WBM
5	028X49MA	2	CAP, RETAINER
6	215X21MA	1	ROD, PIVOT, REAR DOOR
7	7101243YP	1	DOOR, REAR DISCHARGE, 22 WALK MOWER
8	7101461YP	1	SPRING, TORSION, REAR DOOR, 22 WBM
9	7091020YP	4	PUSHNUT, 1/4
10	1101596MA	1	COVER, BELT 22"
11	7900018YP	1	SCREW, Round Washer Head Torx, Hi-Lo
12	7300582ZMA	1	BRACKET, LOWER HANDLE, RH, 22 WBM, HW (not shown detached)
13	7300583ZMA	1	BRACKET, LOWER HANDLE, LH, 22 WBM, HW (not shown detached)
14	7101193MA	1	BELT, DRIVE 22 (3L Section;33.75 effective length)
15	7091508SM	2	RHSSNB, 5/16-18 X 3/4 GR5 YZ
16	7090951SM	2	LHCLN, 5/16-18 BLACK
17	26X217MA	3	TORX ST, 1/4-20 X 11/16
18	7300855ZMA	1	BRACKET, CHUTE
19	7300856ZMA	1	PLATE-MULCH, 22 RB SCOTT'S
20	015X88MA	3	NUT, HEX FLANGE LOCK, 5/16-18 NC
21	7900053MA	8	HFLN, 3/8-16, BRIGHT ZINC
22	7091086YP	6	HHCS, 3/8-16 X 3/4
23	7090606SM	2	HFLB, 5/16-18 X 5/8
24	7091528SM	2	FLW, .375 X .875 X .083 YZ
25	7101931MA	2	HUBCAP, 12 WHEEL, BLACK
26	7091585SM	4	HCLN, 3/8-16 YZ
27	17X169MA	4	WASHER, FLAT, 1 OD X .387 ID
28	7101708MA	2	WHEEL, 12X 2 IDLE, W/DB TRD, BRUTE YELLOW
29	7026257MA	2	WASHER, .531 X .781 3-WAVE
30	7101206MA	1	TRANSMISSION, 22 WBM SS, FWD
31	7101270YP	2	PIN, DRIVE, 22 WBM, FWD
32	043844MA	1	SPACER, ENGINE
33	164X27MA	1	SPRING, COMPRESSION
34	01X156MA	1	BOLT, Hex-Head 5/16-18 X 3.00 P&OIL
35	7300854ZMA	1	BAFFLE, REAR, 22 DECK
36	7101351MA	2	HUBCAP, ROUND, BLACK
37	7101710MA	2	WHEEL, 8X 2 DRIVE, W/DB TRD, BRUTE YELLOW
38	7014341YP	4	RETAINING RING
39	7101207YP	2	GEAR, PINION, 22 WBM, FWD
40	7101402YP	2	SHIELD, DUST, 22 WBM, FWD
41	1101097MA	1	CHUTE, SIDE, PLASTIC, BLACK
42	215X19ZMA	1	ROD, PIVOT, CHUTE
43	166X38MA	1	SPRING, TORSION, CHUTE

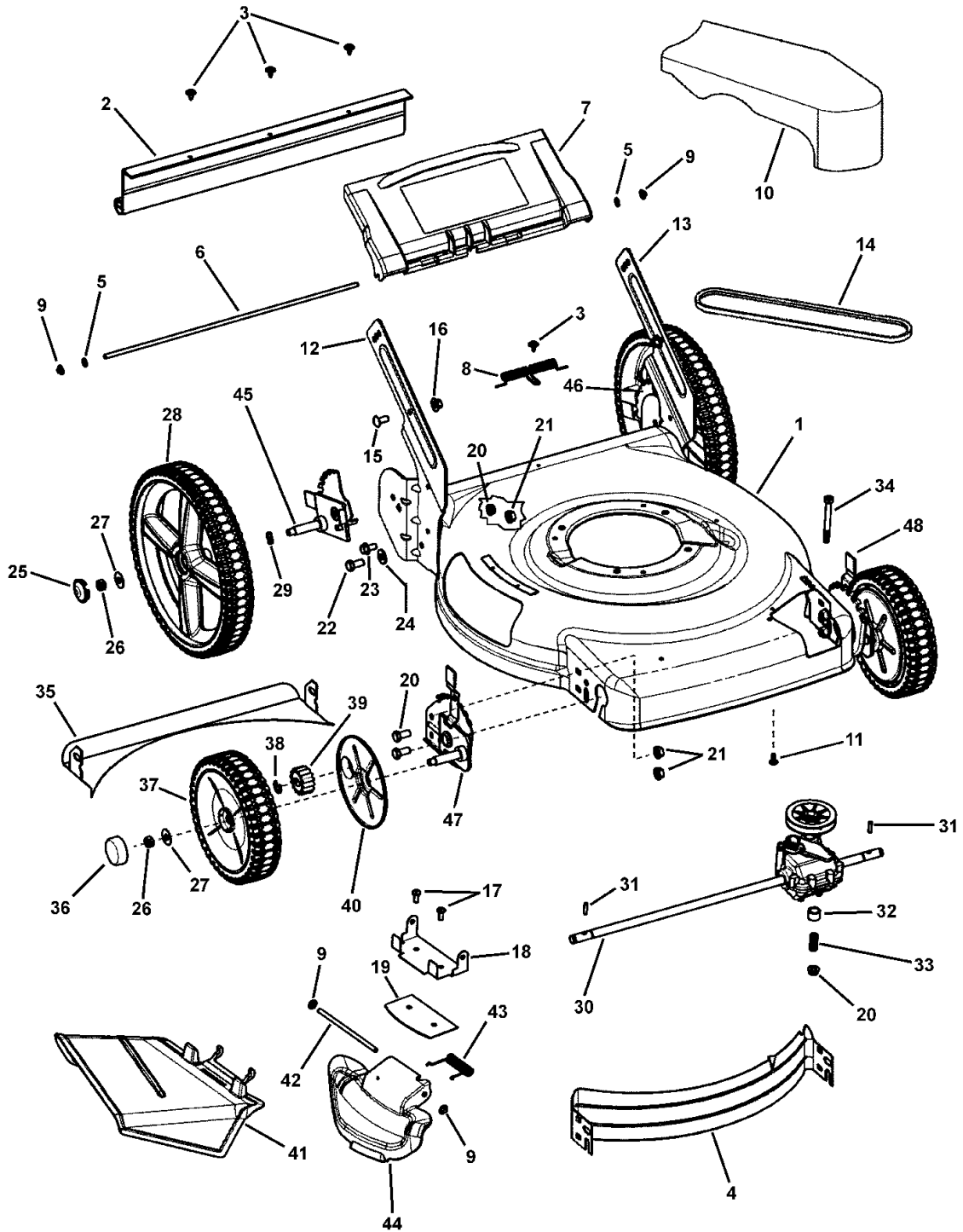
Footnotes

The above parts group applies to the following Mfg. Nos.:

7800477 - BTP22675HW

Wheels & Covers Group

NOTE: Unless noted otherwise,
use the standard hardware torque
specification chart.



The above parts group applies to the following Mfg. Nos.:
7800477 - BTP22675HW

Wheels & Covers Group

REF NO	PART NO.	QTY.	DESCRIPTION
44	1101098MA	1	COVER, MULCH, PLASTIC, BLACK
45	7501056YP	1	ASSY, Height-Of-Cut, RR, 22", 9 Position (shown detached)
46	7501055YP	1	ASSY, Height-Of-Cut, LR, 22", 9 Position (shown attached)
47	7501057YP	1	ASSY, Height-Of-Cut, RF, 22", Propelled, 9 Position (shown detached)
48	7501058YP	1	ASSY, Height-Of-Cut, LF, 22", Propelled, 9 Position (shown attached)
--	7100633YP		GRIP, Latch, Height-Of-Cut (not shown)

Not for
Reproduction

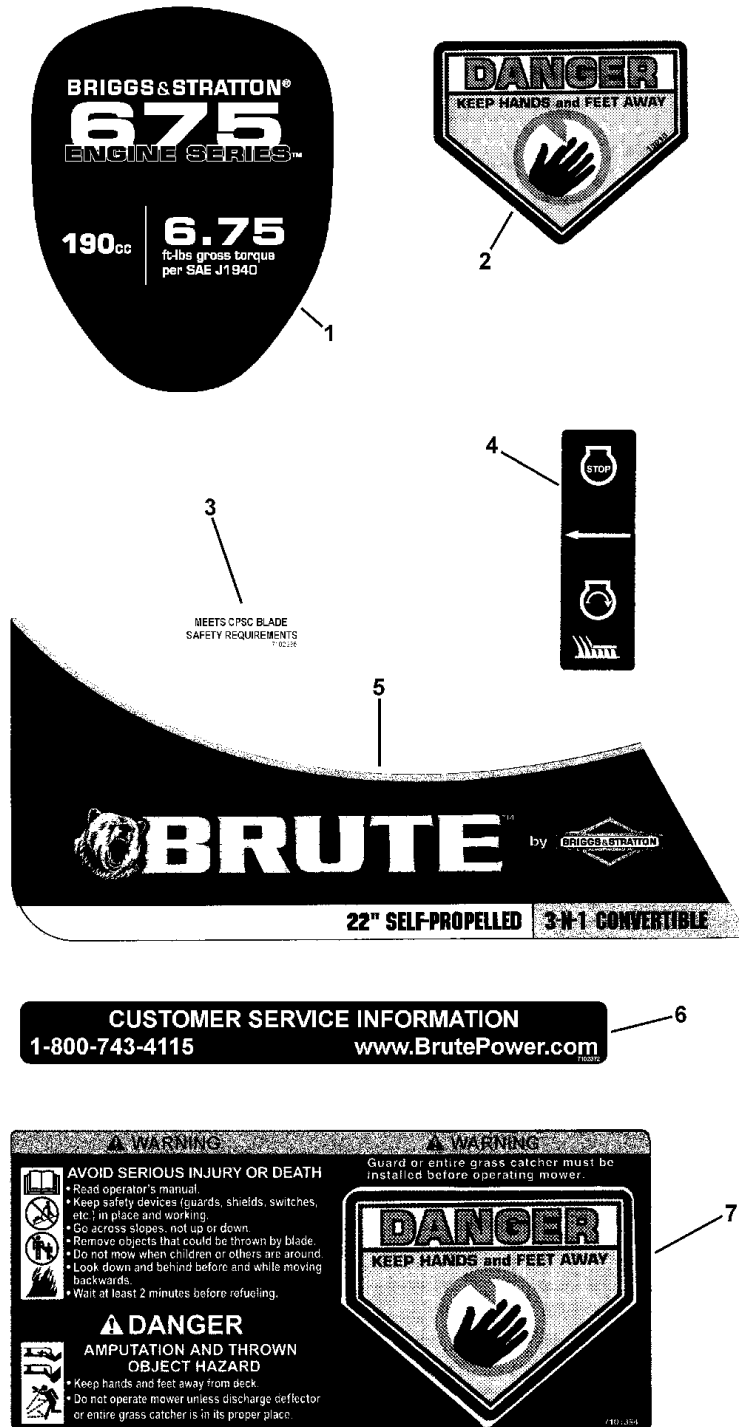
Footnotes

The above parts group applies to the following Mfg. Nos.:

7800477 - BTP22675HW

Decal Group

NOTE: Unless noted otherwise, use the standard hardware torque specification chart.



The above parts group applies to the following Mfg. Nos.:
7800477 - BTP22675HW

Decal Group

REF NO	PART NO.	QTY.	DESCRIPTION
1	7101911MA	1	DECAL, Engine, TP, Brute 675
2	7013010SM	1	DECAL, Danger, Cut Finger
3	7102286YP	1	DECAL, Blade CPSC
4	7029782MA	1	DECAL, OPC Bail International Symbol
5	7101815MA	1	DECAL, Deck Front 22"
6	7102372YP	1	DECAL, Customer Service, Brute
7	7101394YP	1	DECAL, Warning, Rear Discharge Door

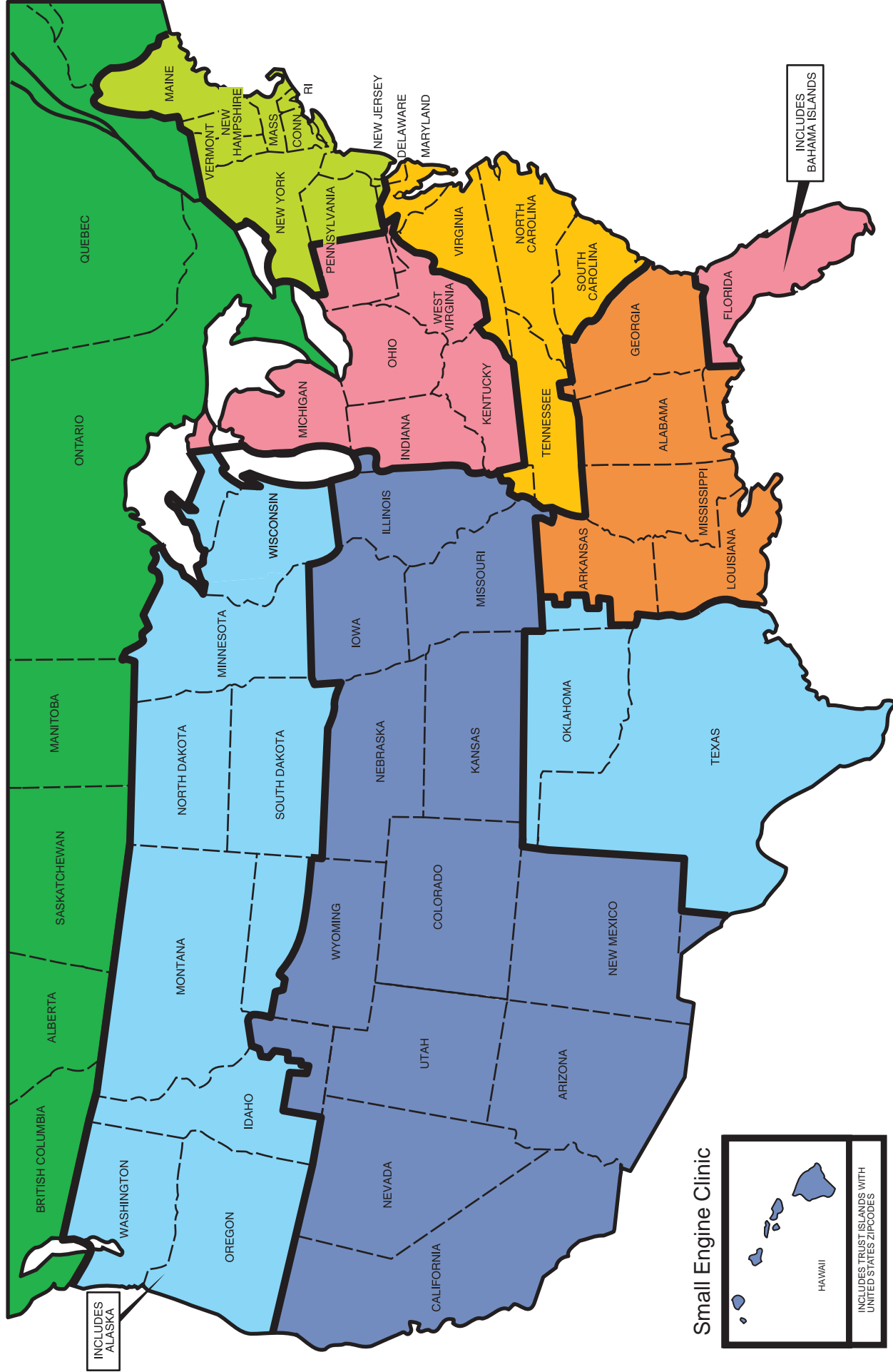
Not for
Reproduction

Footnotes

The above parts group applies to the following Mfg. Nos.:

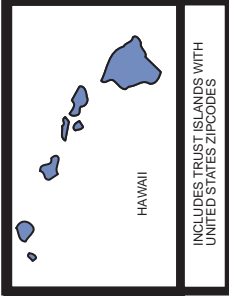
7800477 - BTP22675HW

IDN Network



INCLUDES ALASKA

Small Engine Clinic



INCLUDES BAHAMA ISLANDS

- Magneto Power (800) 733-7388
- Atlantic Power (800) 456-5692
- MWE (800) 683-8484
- Central Power (800) 444-7774
- Preferred Power (800) 331-7164
- SEDCO (800) 346-4260
- Power Source Canada (905) 829-0006

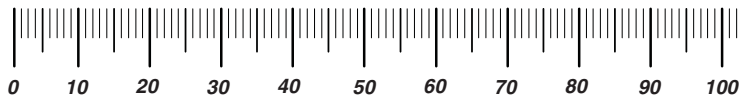
Briggs & Stratton Corporation
INTEGRATED DISTRIBUTOR NETWORK

Midwest Engines	700 Enterprise Rd Aurora, IL 60504	www.mwe.net	(800) 683-8484
Central Power Systems	3700 Paragon Dr Columbus, OH 43228	www.centralpower.com	(800) 444-7774
Atlantic Power	20 Empire Stat Rd Castleton, NY 12033	www.atlanticpowerinc.com	(800) 456-5692
Preferred Power Inc	6509-A Northpark Blvd Charlotte, NC 28216	www.centralpower.com	(800) 331-7164
Central Power Systems	3700 Paragon Dr Columbus, OH 43228	www.centralpower.com	(800) 444-7774
Magneto Power LLC	1000 W. Donges Bay Rd Suite 100 Mequon, WI 53092	www.magnetopower.com	(800) 733-7388
Sedco, Inc	225 Henry D. Robinson Blvd Pendergrass, GA 30567	www.sedcoinc.com	(800) 346-4260
Power Source Canada, LTD	2815 Bristol Circle, Unit 1 Oakville, ON L6H 6X5	www.powersourcecanada.ca	(905) 829-0006

Hardware Identification & Torque Specifications

Torque Specification Chart								
FOR STANDARD METRIC MACHINE HARDWARE (Tolerance ± 20%)								
Property Class	5.6		8.8		10.9		12.9	
	Class 5.6		Class 8.8		Class 10.9		Class 12.9	
Size Of Hardware	in/lbs		in/lbs		in/lbs		in/lbs	
	ft/lbs	Nm.	ft/lbs	Nm.	ft/lbs	Nm.	ft/lbs	Nm.
M3	5.88	.56	13.44	1.28	19.2	1.80	22.92	2.15
M4	13.44	1.28	30.72	2.90	43.44	4.10	52.56	4.95
M5	26.4	2.50	60.96	5.75	5.97	8.10	7.15	9.7
M6	44.64	4.3	7.3	9.9	10.3	14	12.1	16.5
M7	5.2	7.1	12.1	16.5	16.9	23	19.9	27
M8	7.7	10.5	17.7	24	25	34	29	40
M10	15	21	35	48	50	67	59	81
M12	26	36	61	83	86.2	117	103	140
M14	42	58	101	132	136	185	162	220
M16	64	88	147	200	210	285	250	340
M18	89	121	202	275	287	390	346	470
M20	126	171	290	390	405	550	486	660
M22	169	230	390	530	559	745	656	890
M24	217	295	497	375	708	960	840	1140
M27	320	435	733	995	1032	1400	1239	1680
M30	435	590	995	1350	1401	1900	1681	2280
M33	590	800	1349	1830	1902	2580	2278	3090
M36	759	1030	1740	2360	2441	3310	2935	3980
M39	988	1340	2249	3050	3163	4290	3798	5150

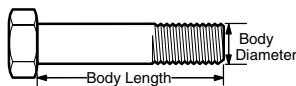
The guides and ruler furnished below are designed to help you select the appropriate hardware.



Nut, M8

Thread Diameter (mm)
Inside Diameter (in)
Threads per inch

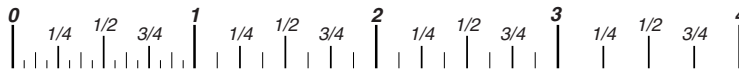
Nut, 1/2-16



Screw, M8- 1.25 x 25

Thread Diameter (mm)
Body Diameter
Distance between threads (mm)
Threads per inch
Body Length (mm)
Body Length (in)

Screw, 1/2- 16 x 2



Standard Hardware Sizing

When a washer or nut is identified as **1/2"** (M8), this is the *Nominal size*, meaning the *inside diameter* is 1/2 inch (8mm metric thread diameter); if a second number is present it represents the *threads per inch* (distance between threads).

When bolt or capscrew is identified as **1/2 - 16 x 2"** (M8 - 1.25 x 50), this means the *Nominal size*, or body diameter is 1/2 inch (8mm metric thread diameter), the second number, 16, represents the *threads per inch*, (*1.25 thread diameter*). The final number is the body length of the bolt or screw, 2 inches (50mm).

Torque Specification Chart						
FOR STANDARD MACHINE HARDWARE (Tolerance ± 20%)						
Hardware Grade	No Marks		No Marks		No Marks	
	SAE Grade 2		SAE Grade 5		SAE Grade 8	
Size Of Hardware	in/lbs		in/lbs		in/lbs	
	ft/lbs	Nm.	ft/lbs	Nm.	ft/lbs	Nm.
8-32	19	2.1	30	3.4	41	4.6
8-36	20	2.3	31	3.5	43	4.9
10-24	27	3.1	43	4.9	60	6.8
10-32	31	3.5	49	5.5	68	7.7
1/4-20	66	7.6	8	10.9	12	16.3
1/4-28	76	8.6	10	13.6	14	19.0
5/16-18	11	15.0	17	23.1	25	34.0
5/16-24	12	16.3	19	25.8	29	34.0
3/8-16	20	27.2	30	40.8	45	61.2
3/8-24	23	31.3	35	47.6	50	68.0
7/16-14	30	40.8	50	68.0	70	95.2
7/16-20	35	47.6	55	74.8	80	108.8
1/2-13	50	68.0	75	102.0	110	149.6
1/2-20	55	74.8	90	122.4	120	163.2
9/16-12	65	88.4	110	149.6	150	204.0
9/16-18	75	102.0	120	163.2	170	231.2
5/8-11	90	122.4	150	204.0	220	299.2
5/8-18	100	136	180	244.8	240	326.4
3/4-10	160	217.6	260	353.6	386	525.0
3/4-16	180	244.8	300	408.0	420	571.2
7/8-9	140	190.4	400	544.0	600	816.0
7/8-14	155	210.8	440	598.4	660	897.6
1-8	220	299.2	580	788.8	900	1,244.0
1-12	240	326.4	640	870.4	1,000	1,360.0

NOTES

- These torque values are to be used for all hardware excluding: locknuts, self-tapping screws, thread forming screws, sheet metal screws and socket head setscrews.
- Recommended seating torque values for locknuts:
 - for prevailing torque locknuts - use 65% of grade 5 torques.
 - for flange whizlock nuts and screws - use 135% of grade 5 torques.
- Unless otherwise noted on assembly drawings, all torque values must meet this specification.

Common Hardware Types

Hex Head Capscrew



Washer

Carriage Bolt


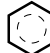
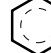

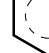


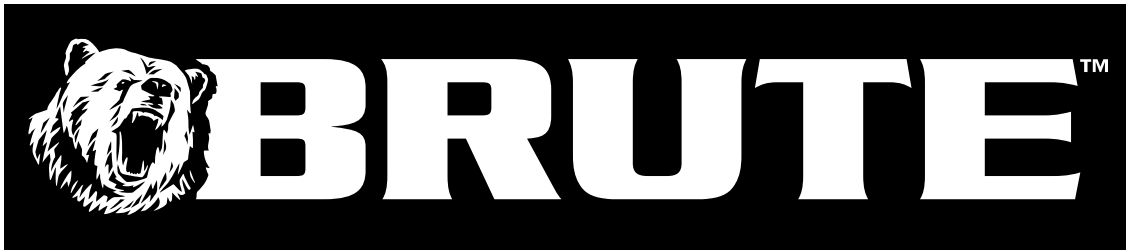
Lockwasher



Hex Nut

Wrench & Fastener Size Guide

				
1/4" Bolt or Nut Wrench—7/16"	5/16" Bolt or Nut Wrench—1/2"	3/8" Bolt or Nut Wrench—9/16"	7/16" Bolt or Nut Wrench (Bolt)—5/8" Wrench (Nut)—11/16"	1/2" Bolt or Nut Wrench—3/4"
M6 Bolt or Nut Wrench—10mm	M8 Bolt or Nut Wrench—13mm	M10 Bolt or Nut Wrench—17mm	M12 Bolt or Nut Wrench—19mm	M14 Bolt or Nut Wrench—22mm



Not for
Reproduction

**IT IS THE POLICY OF BRIGGS & STRATTON CORP. TO IMPROVE ITS PRODUCTS
WHENEVER IT IS POSSIBLE AND PRACTICAL TO DO SO. WE RESERVE THE RIGHT TO
MAKE CHANGES OR ADD IMPROVEMENTS AT ANY TIME WITHOUT INCURRING ANY
OBLIGATION TO MAKE SUCH CHANGES ON PRODUCTS.**

BRUTE™ is a trademark of Briggs & Stratton Yard Power Products.

Copyright© 2008 Briggs & Stratton Power Products Group. All rights reserved. No part of this page can be reproduced or transmitted in any form by any means without the express written permission of Briggs & Stratton Power Products Group.

Briggs & Stratton Yard Power Products Group

3515 N. 124 Street / PO Box 702
Wauwatosa, WI 53222 USA

www.brutepower.com

© Copyright 2009 by Briggs & Stratton Corporation
Milwaukee, WI, USA. All rights reserved