

This installation guide covers MX300 G2 with a wall-mount bracket.

Dimensions

Height: 948 mm / 37.4 in.

Width: 1278 mm / 50.4 in.

Depth: 200 mm / 7.9 in.

Weight total: 40 kg / 88 lb

Manpower



Two people working together are required to mount the system.

Room setup

Explore the Cisco Project Workplace website to find inspiration and guidelines when preparing your office or meeting room for video conferencing, <http://www.cisco.com/go/projectworkplace>



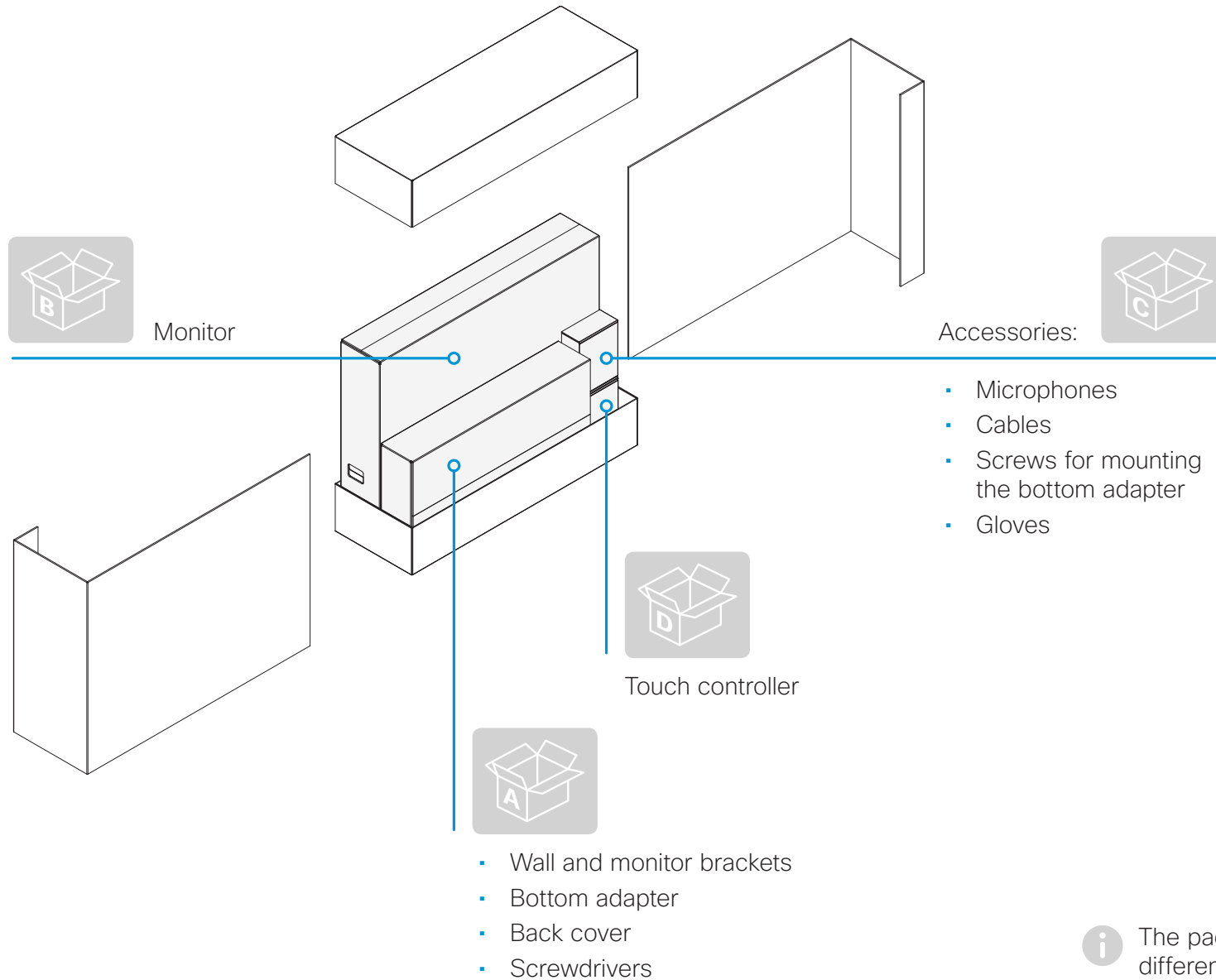
Documentation

Cisco Spark: Visit the Cisco Spark help site to find more information about Spark registered room systems, <http://help.ciscospark.com>



Other services: Visit the Cisco web site to find user guides and compliance and safety information for the video system, <http://www.cisco.com/go/mx-docs>





The packaging may be slightly different for some shipments.

1 Mounting the monitor bracket

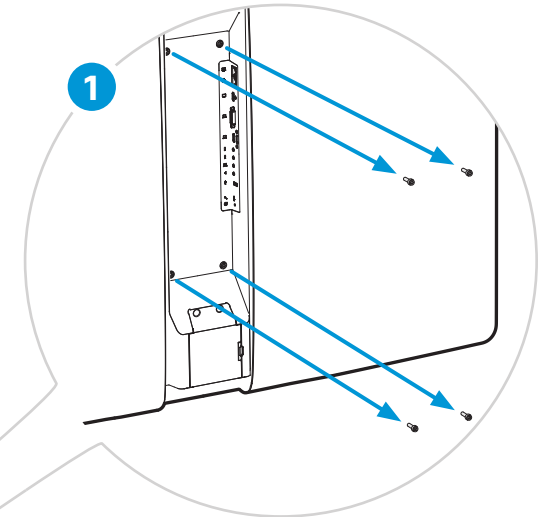
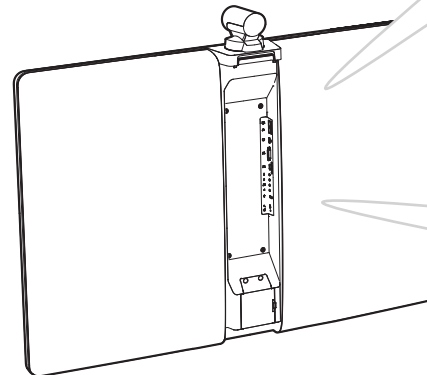
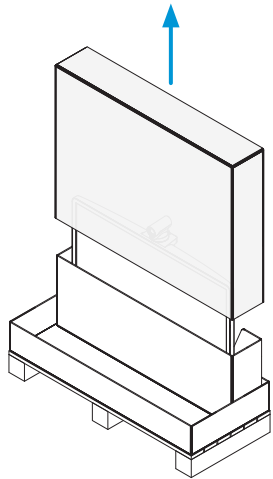


Use gloves when handling the monitor.

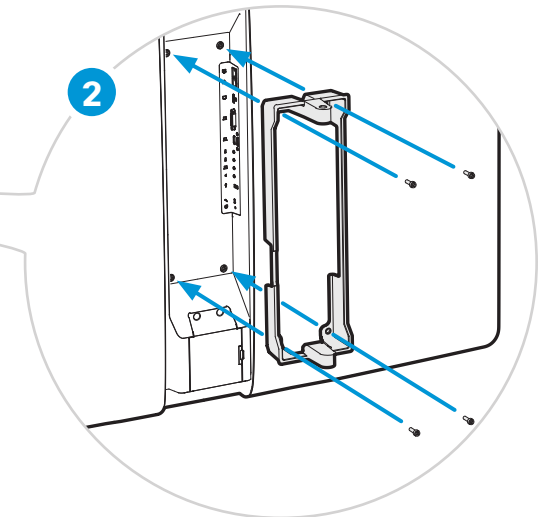


Lay the monitor gently face down on a steady, soft surface.

Take care not to subject the camera for any stress (turn it parallel to the monitor).




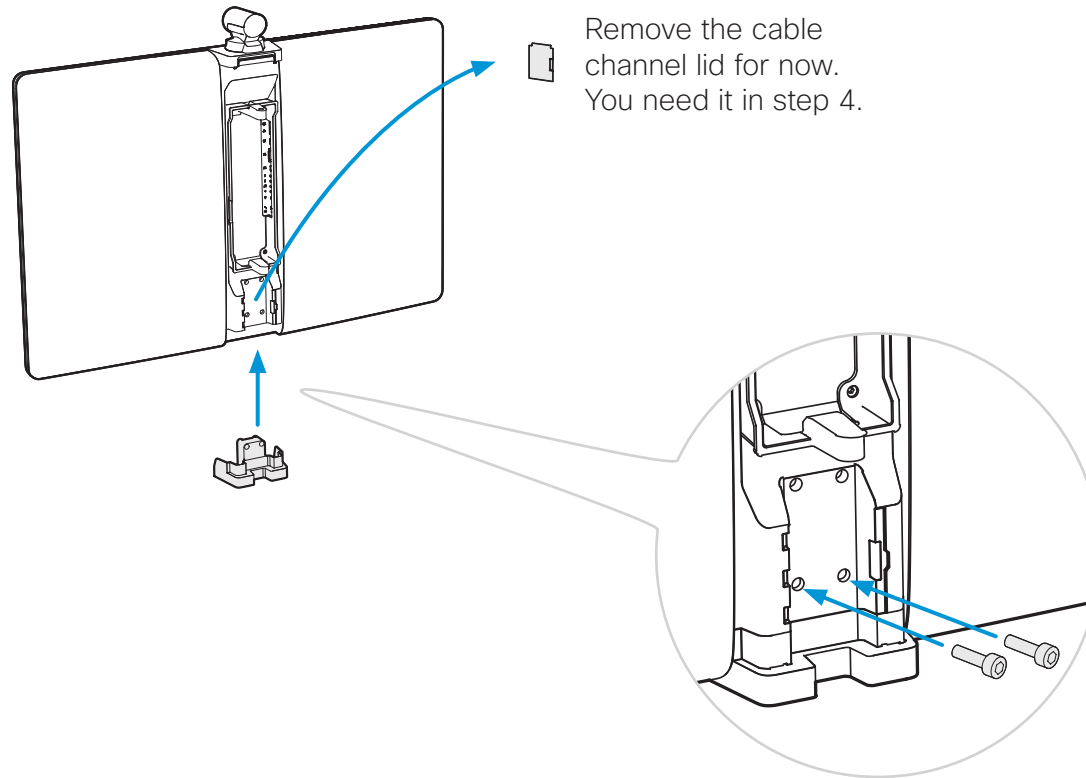
Unscrew these four screws. You will re-use them when fastening the bracket.



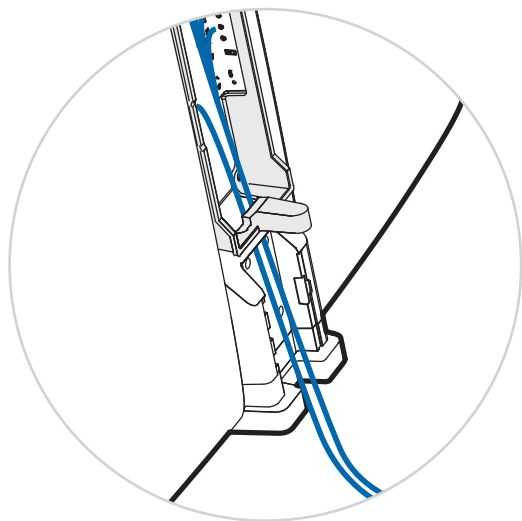
Fasten the bracket with the four screws that you just removed.

2 Mounting the bottom adapter

 2 × M6x16



3 Connecting the cables



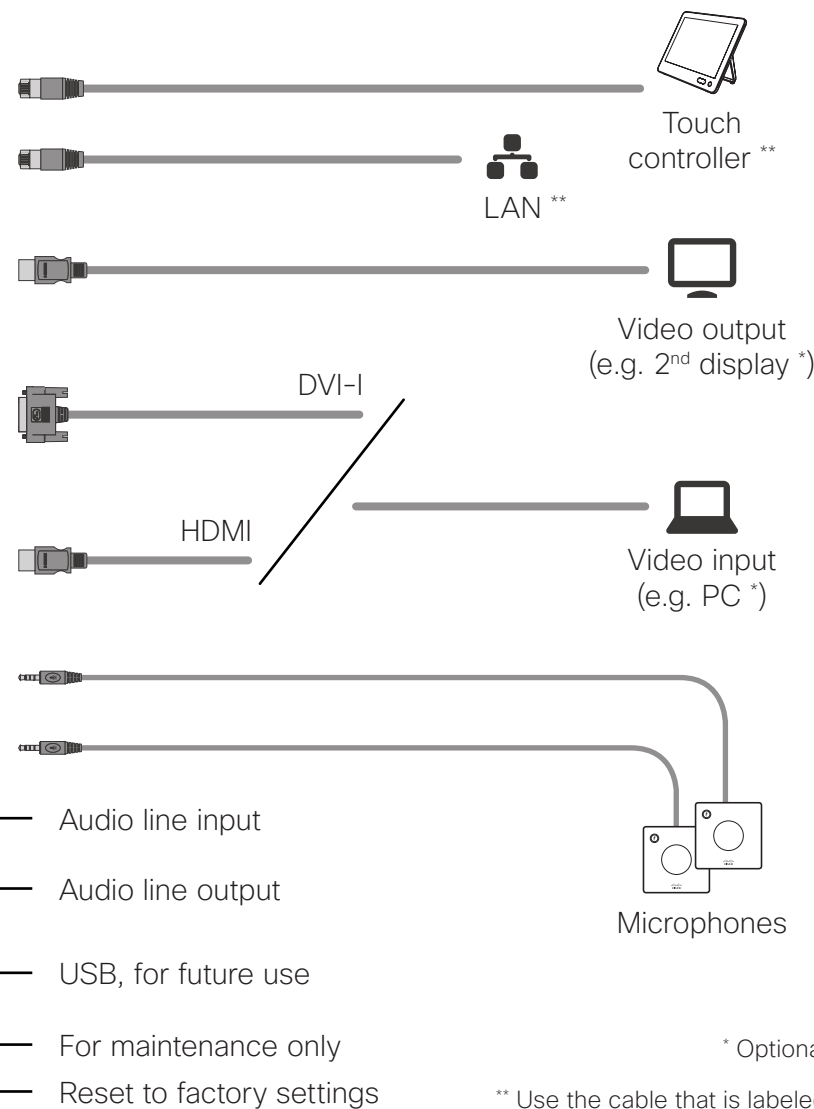
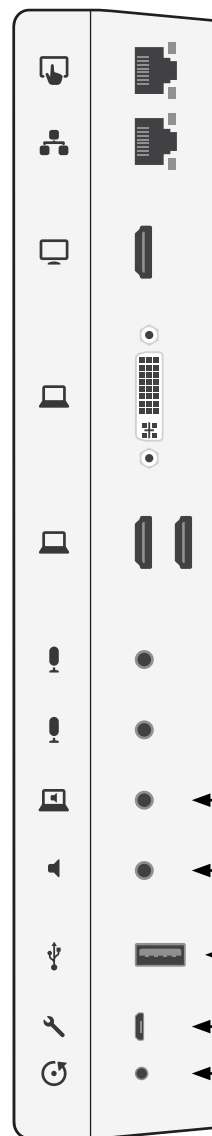
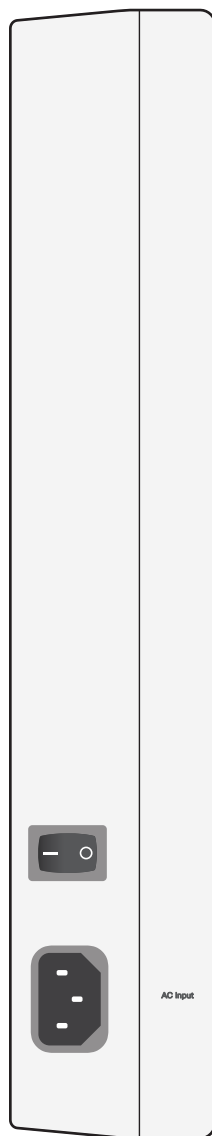
Thread the cables up through the hole in the bracket before you connect them.

Power switch →

Power (100-240 VAC, 50/60 Hz)



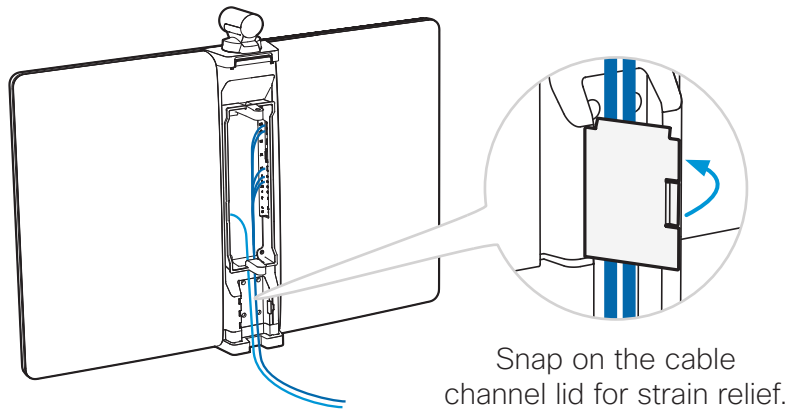
Always use the provided power cable.
The wall socket outlet must be easily accessible after installation.



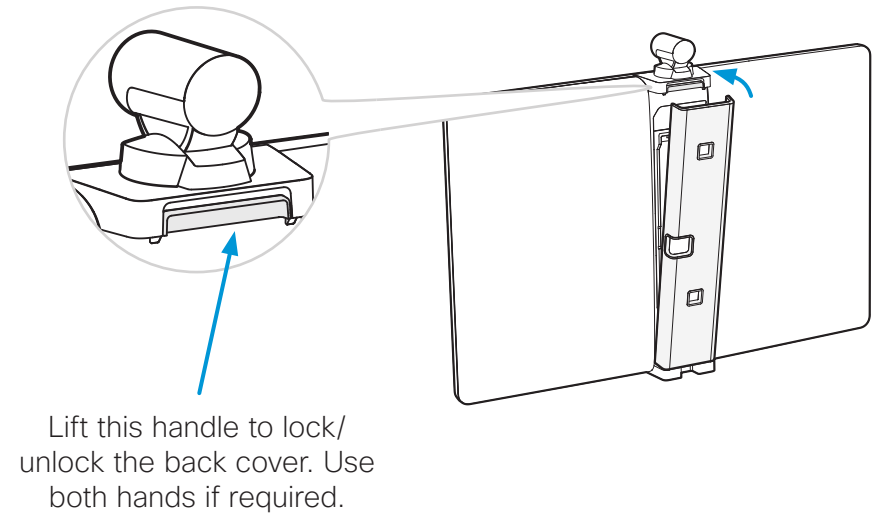
* Optional

** Use the cable that is labeled with for the Touch controller; use the cable that is labeled with for the LAN

4 Snapping on the cable channel lid



5 Mounting the back cover



6 Mounting the monitor to the wall

Due to the size and mass of this product, it is important that the wall-mounted system is safely installed according to these installation instructions.

The wall and mounting hardware must be able to safely support the product.

The wall-mounted system must be installed by qualified personnel, in accordance with state and local building regulations.



40 kg / 88 lb
(including brackets)

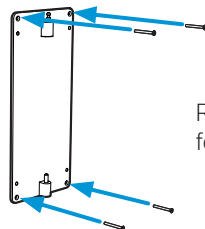


Use gloves when handling the monitor.

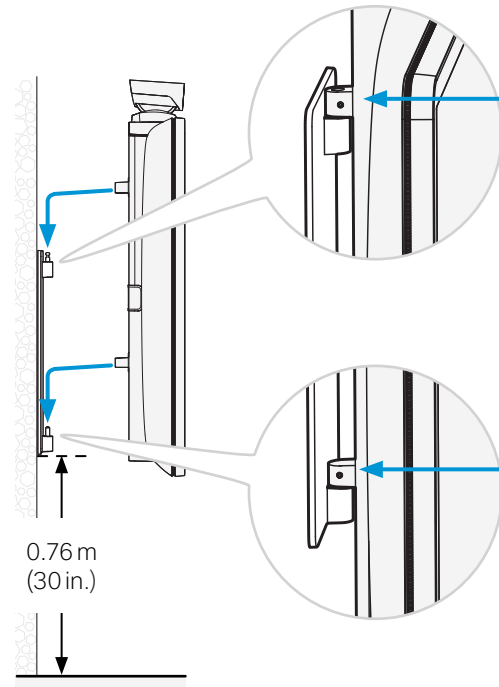


Fix the bracket to the wall with four screws. Use screws and anchors suiting your type of wall (not provided).

Verify that the bracket is level before securing it to the wall.



Recommended distance for regular meeting rooms:



Tighten the upper setting screw to lock the monitor to the bracket.

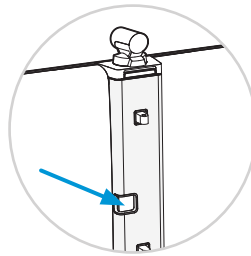
Tighten the lower setting screw to fix the monitor parallel to the wall.

7 Starting up the system

- Connect to power and LAN/Ethernet.
- Switch on the system.

The power switch is placed next to the power connector and can be accessed through the back cover.

Wait while the unit starts up. Normally this takes a few minutes. It may include automatic software upgrade and restart of the Touch controller.



- Follow the instructions on the Touch controller.

Cisco Spark: To find more information on how to get started with Spark registered systems, visit <http://help.ciscospark.com> and look for Getting Started articles for room systems.

Other services: For further information on set-up and configuration, download the *Getting Started Guide* from the Cisco web site, <http://www.cisco.com/go/mx-docs>



Never move the camera manually when power is switched on; always use the camera control function on the Touch controller to change the camera position.

EMC Class A declaration

WARNING: This is a class A product. In a domestic environment this product may cause radio interference in which case the user may be required to take adequate measures.

声明

此为A级产品，在生活环境中，该产品可能会造成无线电干扰。在这种情况下，可能需要用户对其干扰采取切实可行的措施。

On our web site you will find an overview of the worldwide Cisco contacts.

Go to: <http://www.cisco.com/go/offices>

Corporate Headquarters
Cisco Systems, Inc.
170 West Tasman Dr.
San Jose, CA 95134 USA