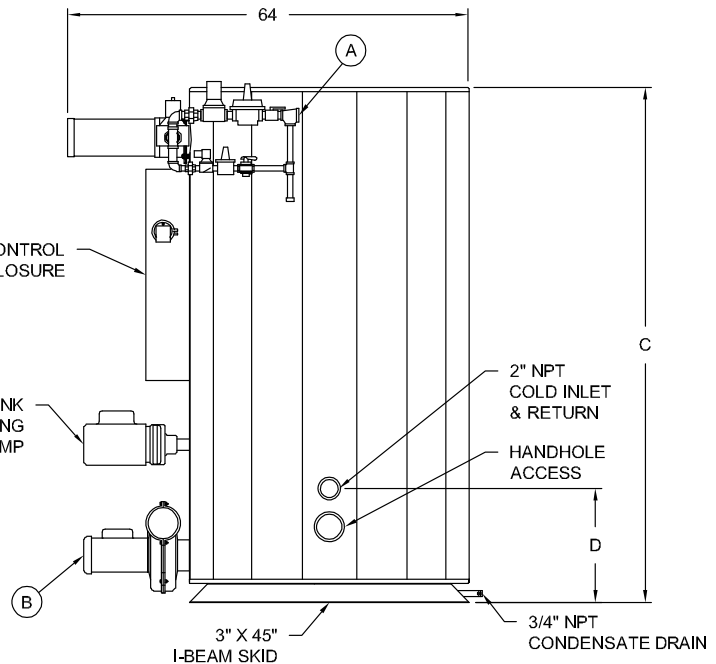
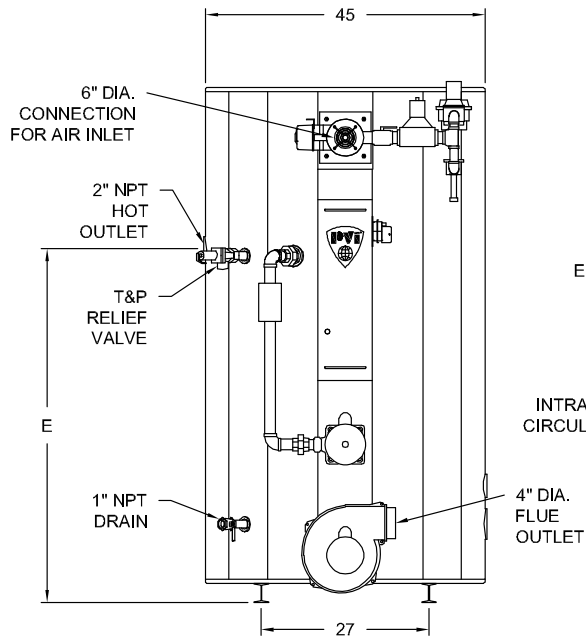


POWER VT® • PACKAGED GAS WATER HEATER AquaPLEX® STORAGE TANK (UNLINED DUPLEX ALLOY)

250 GALLON TANK SERIES

MODEL NUMBER	560 L 250A-PV	800 L 250A-PV	1060 L 250A-PV	1400 L 250A-PV
GPH Recovery Rate at 40°F to 120°F	560	800	1060	1400
GPH Recovery Rate at 40°F to 140°F	450	640	850	1130
Input Btu/h	399,000	565,000	750,000	1,000,000
Nominal Gallons Storage	250	250	250	250
A Gas Inlet - NPT	3/4"	1"	1"	1"
Minimum Inlet Flow Gas Pressure – " W.C.	4-1/2	4-1/2	4-1/2	4-1/2
B Induced-Draft Blower Motor Horsepower	1/3	1/3	1/2	3/4
C Overall Height	79"	79"	81"	81"
D Floor to Cold Inlet	18"	18"	20"	20"
E Floor to Hot Outlet	55"	55"	57"	57"
Approximate Shipping Weight - lbs	1750	1845	1915	2065

Recoveries based on 94% thermal efficiency. ASHRAE 90.1 compliant.
Dimensions are in inches unless otherwise noted.
For standard and optional equipment, see form # PV 8388.



STANDARD GAS PRESSURE REQUIREMENTS:

SEE TABLE FOR **MINIMUM** PRESSURE BY MODEL NUMBER.
MAXIMUM STATIC INLET GAS PRESSURE : 14" W.C.
FOR GAS PRESSURES OUTSIDE OF THIS RANGE,
CONTACT YOUR PVI REPRESENTATIVE.

STANDARD ELECTRICAL REQUIREMENTS:

CONTROL VOLTAGE: 120V, 1Ø, 60 HZ., 2 AMPS
INDUCED-DRAFT BLOWER: 1/3 HP, 120V, 1Ø, 60 HZ., 6 AMPS
1/2 HP, 120V, 1Ø, 60 HZ., 8 AMPS
3/4 HP, 120V, 1Ø, 60 HZ., 11 AMPS
INTRATANK CIRCULATOR: 1/3 HP, 120V, 1Ø, 60 HZ., 7 AMPS
(CIRCULATOR OPERATES ONLY WHEN BURNER IS FIRING)

VENTING REQUIREMENTS:

CATEGORY IV - POSITIVE PRESSURE, CONDENSING.
INTERTEK/ETL LISTED FOR CPVC PLASTIC PIPE ON EXHAUST.
STAINLESS STEEL IS ALSO ACCEPTABLE.
INLET AIR ON ALL INPUTS RATED FOR 120 EQUIV FEET THRU 6"
399 TO 750 MBH: EXHAUST RATED FOR 100 EQUIV FEET THRU 4"
EXHAUST RATED FOR 500 EQUIV FEET THRU 6"
1000 MBH: EXHAUST RATED FOR 50 EQUIV FEET THRU 4"
EXHAUST RATED FOR 390 EQUIV FEET THRU 6"
SEE INSTALLATION MANUAL FOR DETAILS.

**PVI RESERVES THE RIGHT TO CHANGE THE DESIGN
AND SPECIFICATION WITHOUT NOTICE.**



PVI INDUSTRIES, LLC
FORT WORTH, TEXAS 76111
(800) 784-8326 • www.pvi.com