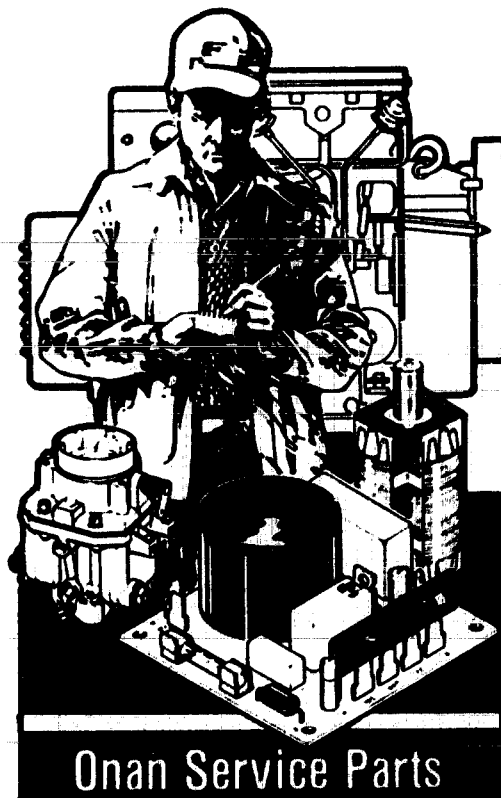


The following catalog has gaps in its page numbers, or doesn't have any numbers. We have chosen to leave the page numbering in the order that Acrobat assigns it.

Onan

Parts Manual 10 CCK CCKB GenSet

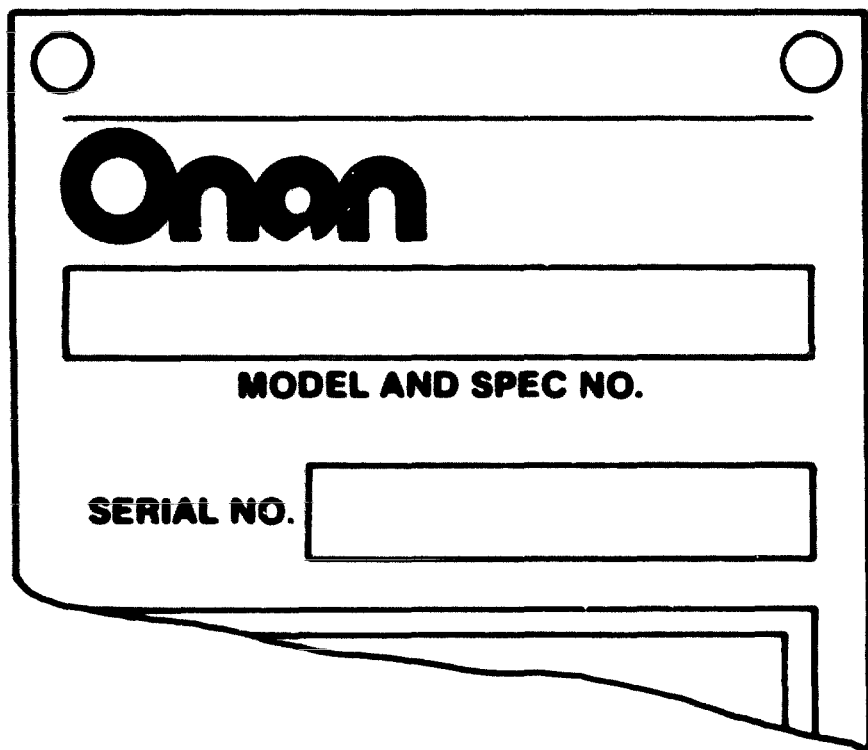


Onan Service Parts

General Information

For parts or service, contact the dealer from whom you purchased this equipment or refer to your Nearest Authorized Onan Parts and Service Center.

To avoid errors or delay in filling your parts order, always give the MODEL, SPEC NO. and SERIAL NO. from the Onan nameplate.



The diagram shows a rectangular nameplate with two circular mounting holes at the top. The word "Onan" is printed in a large, bold, stylized font. Below it is a wide rectangular box labeled "MODEL AND SPEC NO.". Underneath that is a narrower rectangular box labeled "SERIAL NO.". The bottom right corner of the nameplate is folded over, revealing a second identical nameplate underneath. The number "M-1100" is printed at the bottom right of the diagram.

For handy reference, insert "YOUR" nameplate information in the spaces above.

Index

Adapter, Air Cleaner A12
Adapter, Generator 88.C11
Advance, Spark A9
Ammeter C10
Amplifier C10
Armature, Generator 88.C11

Baffle, Breather Tube A6
Base, Oil A5.C12
Bearing, Camshaft A6
Bearing, Crankshaft A6
Bell, End 88.C11
Block, Cylinder A6
Block, Terminal 810.C10
Blower, Generator 88
Booster, Vacuum Speed 82
Box, Breaker 86.C8
Box, Control 810.C10
Bracket, Fuel Pump C9
Bracket, Governor 83
Bracket, Timing C8
Brush, Generator 88

Cable, Battery 810.C10
Cable, Spark Plug 88
Camshaft A6
Carburetor (Gas Only) C3
Carburetor, Gasoline A12
Carburetor, Components (Gas-Gasoline) A14.B1
Carburetor, Components (Gasoline) A14.B1
Choke, Thermo-Magnetic 85
Clamp, Muffler C9
Cleaner, Air C4
Clip, Bearing Stop 88
Coil, Field 88.C11
Coil, Ignition 86
Commutator, Brush 88.C11
Condenser 88.810.C11
Control, Generator 810
Control, Remote C10
Cover, Air Cleaner A12.C9
Cover, Breaker Box 86
Cover, Control 810.C10
Cover, End Bell 88
Cover, Valve A6
Crankshaft A10

Diaphragm, Breaker Box 86

Element, Air Cleaner A12

Flywheel A10.C8
Frame, Carrying C5
Frame, Generator 88.C11

Gasket, Breaker Box 86
Gasket, Carburetor Mounting A12
Gasket, Exhaust Manifold A12
Gasket, Fuel Pump A13.B2
Gasket, Gearcase A11.C13
Gasket, Intake Manifold A12
Gearcase A11.C13
Generator 88
Guard, Scroll C7
Guide, Valve A6

Harness, Wiring (Control To Engine) 810.C10
Head, Cylinder A6
Heater, Oil Base C6
Hose, Breather A12
Housing, Blower C7

Joint, Ball 83

Kit, Carburetor Repair A14.B1
Kit, Decal 812
Kit, Gasket 812
Kit, Tune-Up 87

Line, Fuel - Flexible C3.C6.C9
Line, Fuel-Gasoline A12.C2
Link, Throttle 83

Magneto 86
Manifold, Exhaust C9
Manifold, Intake A12
Muffler A12.C9

Paint, Green 812
Pan, Air Cleaner A12
Piston A6
Plug, Spark 86
Points, Ignition 86
Pump, Fuel - Electric C9
Pump, Fuel - Mechanical A12
Pump, Oil A5

Regulator, Garretson C3
Resistor, Fixed 810.C10
Rig, Brush 88.C11
Ring, Collector - Generator 88.C11
Ring, Piston A6
Rod, Connecting A6

Scroll, Air C7
Seal, Oil-Crankshaft A6
Seat, Valve A6
Shield, Heat - Air Cleaner A12
Shoe, Pole 88.C11
Solenoid, Start 810
Spring, Governor 83
Starter, Rendi-Pull 84
Starter Components 84
Strap, Ground 810
Switch, Hatco C10
Switch, Pressure - Oil A5.C10.C12
Switch, Start-Stop 83.B10
Switch, Vacuum Regulator C3

Tank, Day C3
Tank, Fuel C2.C6
Tappet, Valve A6
Tube, Breather A6
Tube, Exhaust A12

Valve, Exhaust A6
Valve, Intake A6
Valve, Solenoid (Gaseous Fuel) C3

Wheel, Blower C8

INTRODUCTION

This catalog applies to the standard CCKB Generating Sets as listed below. Parts are arranged in groups of related items and each illustrated part is identified by a reference. Parts illustrations are typical. Using the MODEL and SPEC NO. from the set nameplate, select the Parts Key No. (1, 2, etc. in the last column) that applies to your set Model and Spec No. This Parts Key No. represents parts that differ between models. Unless otherwise mentioned in the description, parts are interchangeable between models. Right and left sides are determined by FACING the engine end (front) of the set.

GENERATING SET DATA TABLE

MODEL & SPEC NO. £	ELECTRICAL DATA					PARTS KEY NO.
	WATTS	VOLTS	HERTZ	WIRE	PHASE	
10.0CCKB-3CP/* 10CCK AJ	10,000	120/240	60	†	1	1
8.0CCKB-53CP/* 8CCK AP	8,000	120/240	50	†	1	
10.0CCKB-3CR/* 10CCK FJ	10,000	120/240	60	†	1	2
10.0CCKB-4R/* 10CCK FC	10,000	120/208	60	4	3	
8.0CCKB-53CR/* 8CCK FP	8,000	120/240	50	†	1	
8.0CCKB-54R/*	8,000	120/240	50	4	3	
Mobile Generating Sets	See separate parts section following the standard parts section.					

- * - The Specification Letter advances (A to B, B to C, etc.) with manufacturing changes
- £ - New Model designations shown, begin during 1969. Previous designations did not use a decimal in the kW rating. EXAMPLE 8.0CCKB was formerly 8CCKB, 10.0CCKB was formerly 10CCKB.
- † - Set is reconnectable for 120 volt, 2 wire or 120/240 volt, 3 wire service.
NOTE: Previously the C designation was not used in the model
NOTE: Hertz is a unit of frequency equal to one cycle per second.

STANDARD PARTS SECTION

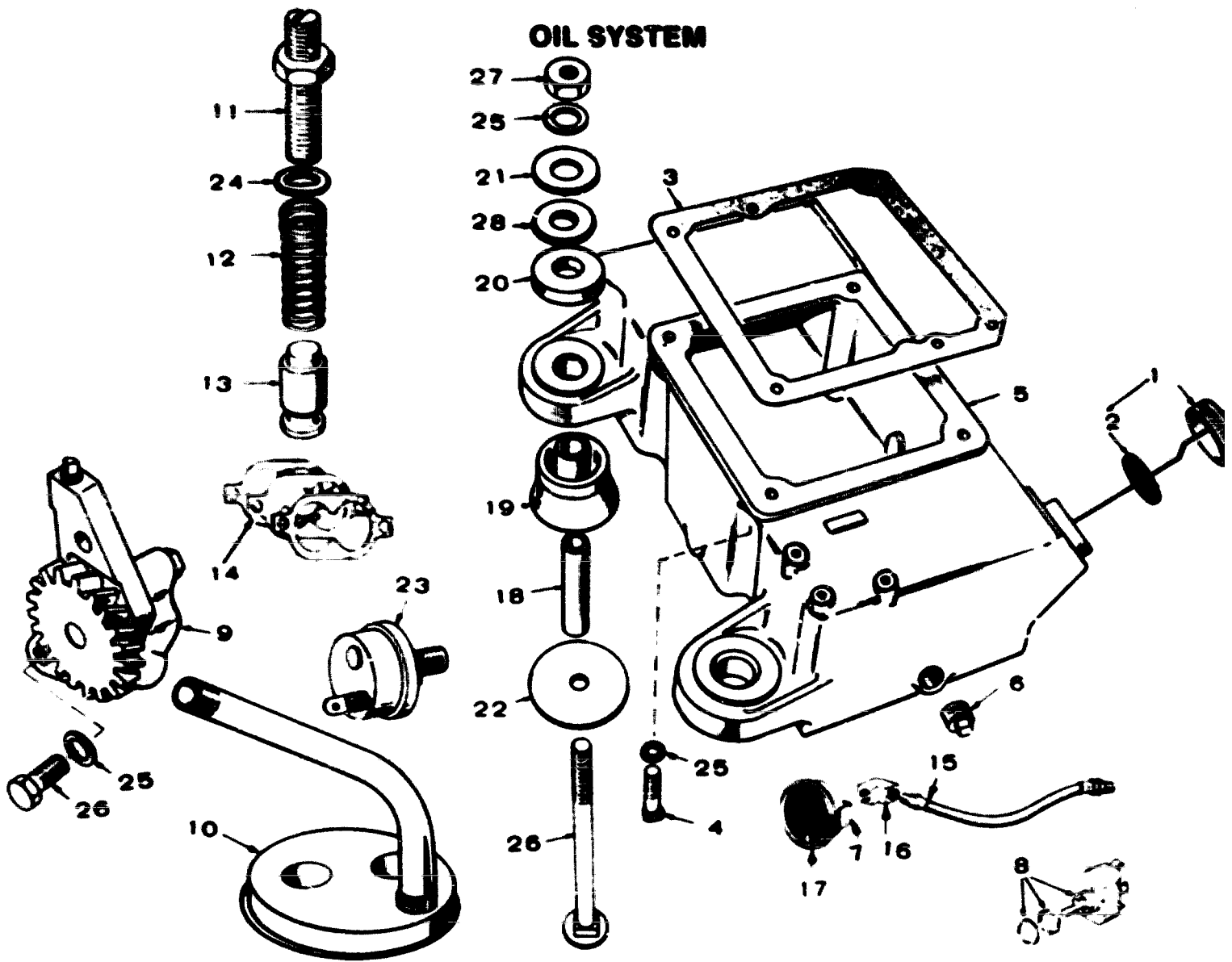
This section contains the illustrated parts listings for the standard generator sets listed in the Data Table.

NOTICE!

ITEMS REFERENCED AS OPTIONAL INDICATE PART IS FACTORY INSTALLED AND MAY NOT BE APPLICABLE TO ALL MODELS, FOR FIELD CONVERSIONS ADDITIONAL PARTS ARE USUALLY REQUIRED.



OIL SYSTEM

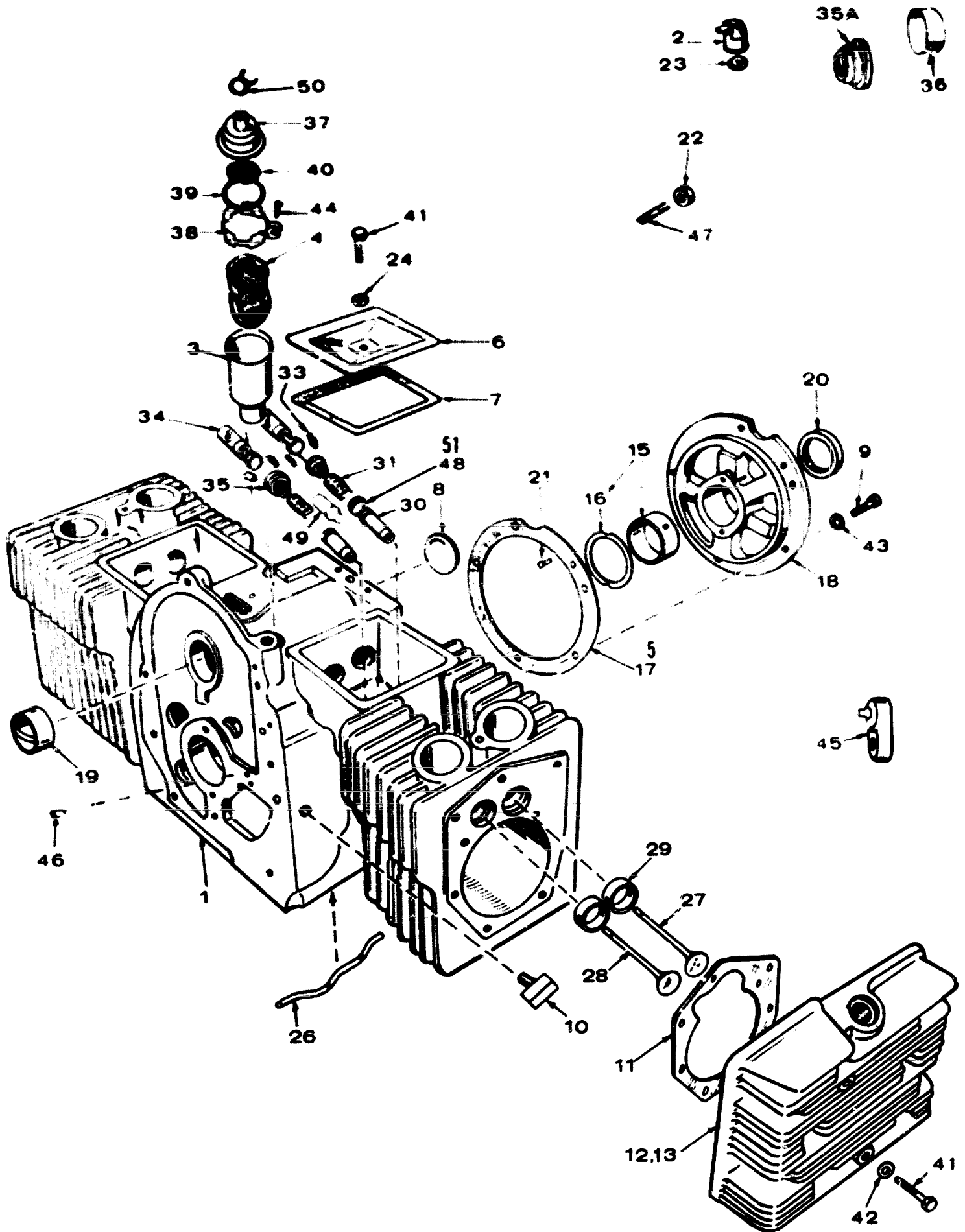


REF. NO.	PART NO.	QTY. USED	PART DESCRIPTION
1	123-0489	1	Cap and Indicator Oil Fill
2	123-0191	1	Gasket Oil Fill Cap
3	102-0158	1	Gasket Oil Base Mounting
4	102-0455	4	Screw Cap - Oil Base to Block (Special)
5	BASE OIL		
	102-0686	1	Key 1
	102-0643	1	Key 2
6	505-0056	2	Plug - (1) Oil Drain (1) Oil Base Heater Hole
7	193-0031	1	U-Clamp (2")
8	308-0097	1	Switch Toggle - Low Oil Pressure Momentary By-Pass
9	120-0491	1	Pump Oil (Components Not Sold Separately)
10	120-0400	1	Cup Oil Pump Intake
11	120-0187	1	Stud Oil By-Pass (Includes Nut)
12	120-0140	1	Spring By-Pass Valve
13	120-0398	1	Valve By-Pass
14	120-0161	1	Gasket Kit Oil Pump
15	501-0004	1	Line Flexible - Oil Gauge
16	CONNECTOR - Oil Gauge		
	502-0017	1	Inverted Female
	502-0005	1	Female Elbow
17	193-0005	1	Gauge Oil Pressure
	402-0349	1	Mounting Hardware (Includes Parts Marked *)

REF. NO.	PART NO.	QTY. USED	PART DESCRIPTION
18	402-0290	4	*Bushing Spacer
19	CUSHION VIBRATION		
	402-0284	2	Engine End
	402-0285	2	Generator End
20	402-0282	4	*Snubber Shock Mounting
21	526-0014	4	*Washer (29/64" ID x 1-1/2" OD x 1/8" Thk)
22	526-0195	4	*Washer (29/64" ID x 3-1/4" OD x 1/8" Thk)
23	309-0010	1	Switch Low Oil Pressure Washer Oil Pressure Relief Valve Adjusting Screw (25 64" ID x 9/16" OD x 1 1/16" Thk)
24	526-0066	1	Washer Oil Pressure Relief Valve Adjusting Screw (25 64" ID x 9/16" OD x 1 1/16" Thk)
25	WASHER LOCK - SPRING		
	850-0040	2	Oil Pump Mounting (1 4")
	850-0050	4	Oil Base Mounting (3/8")
	850-0055	4	*Set Mounting (7/16")
26	SCREW CAP - HEX HEAD		
	800-0007	2	Oil Pump Mounting (1/4-20 x 1")
	800-0081	4	*Set Mounting - Key 1 (3/8-14 x 3-1/2")
	816-0212	4	Bolt Carriage - Set Mounting - Key 2 (7/16-14 x 5-1/2")
27	862-0004	4	*Nut Set Mounting (7/16-14)
28	526-0198	4	*Washer (5/8" ID x 1-1/2" OD x 1/16" Thk)

* - Parts Included in 402-0349 Mounting Hardware Kit

CYLINDER BLOCK

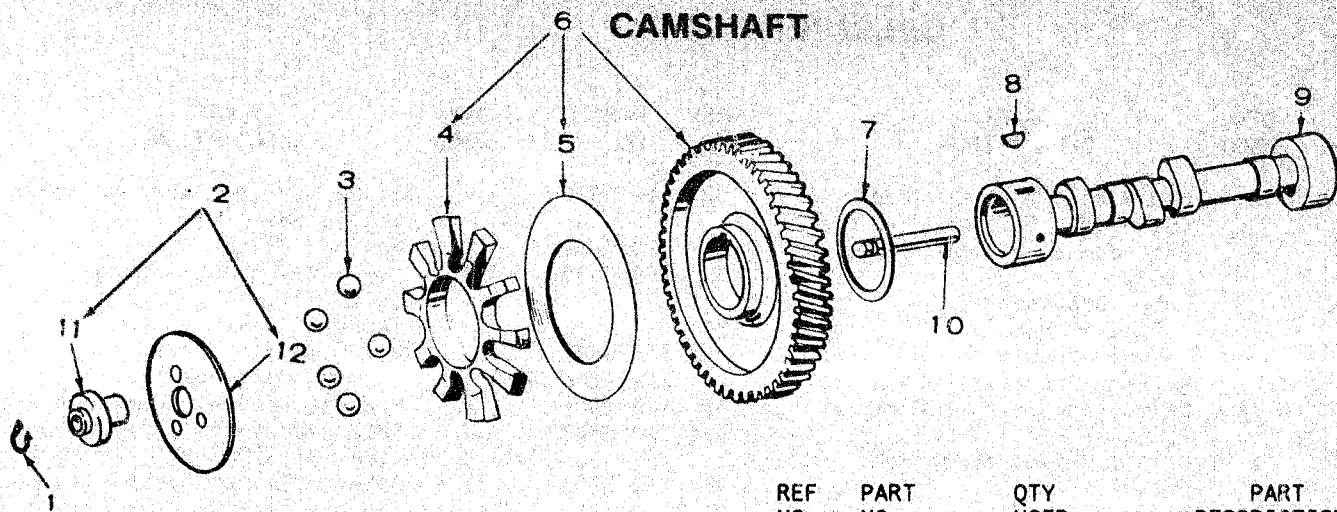


CYLINDER BLOCK

REF NO.	PART NO.	QTY USED	PART DESCRIPTION	REF NO.	PART NO.	QTY USED	PART DESCRIPTION
1	110-2358	1	Block Assembly, Cylinder (Includes Parts Marked *)	30	110-0902	4	*Guide, Valve - When No Seals on Valves
2	123-0787	1	Cap, Breather Tube - Spec A Only	31	110-0539	4	Spring, Valve
3			Tube, Breather	33	110-0639	8	Lock, Valve and Spring Retaining
	123-0866	1	Spec A Only	34			Tappet, Valve
	123-0953	1	* Begin Spec B		115-0006	4	Standard
4	123-0865	1	Baffle, Breather Tube		115-0006-05	4	.005" Oversize
5	104-0776	AR	Shim, Rear Bearing Plate (.005")	35	110-0904	4	Rotocap, Valve - Gasoline Set
6	110-0466	2	Cover, Valve Compartment	35A	110-0893	4	Retainer, Valve - Gaseous Fuel Sets
7	110-0667	2	Gasket, Valve Cover	36	110-1283	1	Cover, Timing Control (Also in Camshaft Group) - Key 1
8	517-0049	1	*Plug, Camshaft Expansion - Key 2	37	123-0954	1	Cap and Valve, Breather Tube - Begin Spec B
9	800-0517	5	*Screw, Cap - Hex Head - Rear Bearing Plate Mounting (Special)	38	123-0951	1	Clamp, Breather Tube Cap - Begin Spec B
10	502-0058	1	Lee, Oil Line	39	509-0117	1	*O" Ring Seal - Breather Tube Cap - Begin Spec B
11	110-0892	2	Gasket, Cylinder Head	40	123-0958	2	Screen, Breather Tube - Begin Spec B
12	110-0884	1	Head, Cylinder - RH (82)	41			Screw, Cap - Hex Head (Special)
13	110-0883	1	Head, Cylinder - LH (81)		110-0879	8	Cylinder Head
15			Bearing, Crankshaft - Front and Rear		114-0022	10	Cylinder Head
	101-0450	2	* Standard		114-0171	1	Cylinder Head - Mounts
	101-0450-02	2	.002" Undersize				Optional High Air
	101-0450-10	2	.010" Undersize				Temperature Cut-Off Switch
	101-0450-20	2	.020" Undersize		800-0012	2	Valve Compartment Cover (1/4-20 x 2-1/4")
	101-0450-30	2	.030" Undersize	42	526-0122	18	Washer, Flat - Cylinder Head Screws (11/32 ID x 23/32 OD x 1/8" Thk)
16	104-0575	2	*Washer, Crankshaft Bearing Thrust (Special)	43	850-0045	5	*Lockwasher, Bearing Plate Mounting (5/16")
17	101-0115	1	*Gasket Kit, Bearing Plate	44	809-0035	1	Screw, Round Head - Breather Clamp (#8 x 3/4")
18	101-0316	1	*Plate, Rear Bearing (Less Bearing)	45	309-0255	1	Switch, High Air Temperature Cut-Off - Optional
19	101-0367	2	§Bearing, Camshaft Front and Rear (Precision)	46	516-0141	2	Pin, Roll
20	509-0041	1	Seal, Bearing Plate (Included in Engine Gasket Kit 168-0103)	47	520-0114	5	Stud, Rear Bearing Plate Mounting (Early Models)
21	516-0072	4	*Pin, Main Bearing Stop	48	110-3136	2	*Gasket, Intake Valve Guide
22	110-0445	5	*Nut, Hex - Rear Bearing Plate Mounting (Early Models) (Special)	49	110-1827	4	Guide, Valve (to Stop Oil Seepage) Used When Valves Have Seals
23	123-0315	1	Valve, Breather Tube - Spec A Only	50	503-0171	1	Clamp, Breather Hose
24	526-0063	2	Washer, Flat - Copper - Valve Compartment Cover (17/64 ID x 7/16 OD x 1/32" Thk)	51	509-0090	2	Seal, Valve - Intake
26	120-0386	1	*Tube, Crankcase Oil				
27	110-1037	2	Valve, Intake				
28	110-0880	2	Valve, Exhaust				
29			Insert, Valve Seat Exhaust				
	110-0872	2	* Standard				
	110-0872-02	2	.002" Oversize				
	110-0872-05	2	.005" Oversize				
	110-0872-10	2	.010" Oversize				
	110-0872-25	2	.025" Oversize				
			Intake (Stellite)				
	110-1000	2	* Standard				
	110-1000-02	2	.002" Oversize				
	110-1000-05	2	.005" Oversize				
	110-1000-10	2	.010" Oversize				
	110-1000-25	2	.025" Oversize				

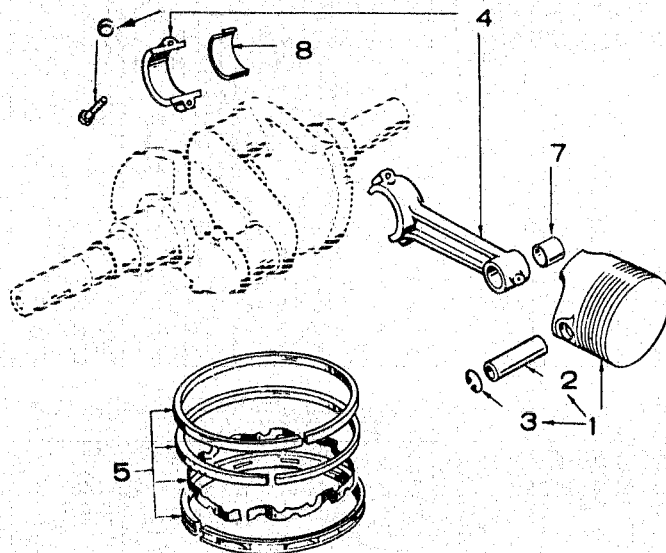
* - Parts Included in 110-2358 Cylinder Block Assembly

§ - NOTE: Units with Hi-Lift Cam use 101-0405 Bearing.



REF NO.	PART NO.	QTY USED	PART DESCRIPTION	REF NO.	PART NO.	QTY USED	PART DESCRIPTION
1	150-0078	1	Ring, Camshaft Center Pin	9			Camshaft
2	150-1695	1	Kit, Governor Cup Replacement (Includes Parts Marked *)	105-0238	1		Key 2 - Includes Center Pin
3	510-0015	5	Ball, Fly - Governor	105-0234	1		Key 1 - Includes Center Pin and Spark Advance Mechanism Pins
4	150-1257	1	Spacer, Governor Flyball	10	150-0075	1	Pin, Camshaft Center
5	150-0077	1	Plate, Governor Flywheel	11	150-1519	1	*Hub, Governor Cup
6	105-0332	1	Gear, Camshaft - Timing	12	150-1520	1	*Cup, Governor
7	105-0541	1	Washer, Camshaft Gear Thrust	* - Parts Included in 150-1695 Governor Cup Replacement Kit.			
8	515-0001	1	Key, Camshaft Gear Mounting				

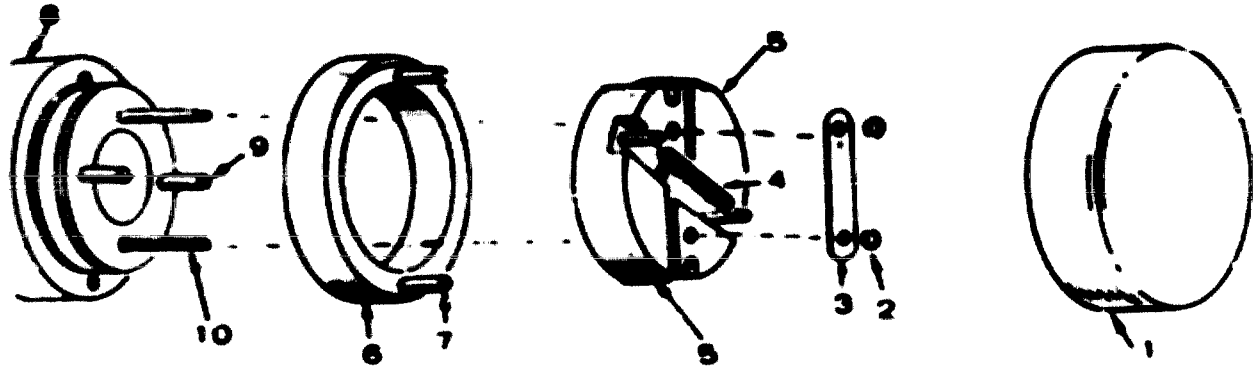
PISTON AND ROD



REF NO.	PART NO.	QTY USED	PART DESCRIPTION	REF NO.	PART NO.	QTY USED	PART DESCRIPTION
1			Piston and Pin (Includes Retaining Rings)	2	112-0069	2	Pin, Piston
			LPG	3	112-0003	4	Ring, Piston Pin Retaining
			Gasoline	4	114-0203	2	Rod, Connecting (Includes Bushing and Bolts)
			Standard	5			Ring Set, Piston
			.005" Oversize	113-0153	2		Gasoline
			.010" Oversize	113-0153-05	2		Standard
			.020" Oversize	113-0153-10	2		.005" Oversize
			.030" Oversize	113-0153-20	2		.010" Oversize
			.040" Oversize	113-0153-30	2		.020" Oversize
			Standard	113-0153-40	2		.030" Oversize
			.005" Oversize				.040" Oversize
			.010" Oversize	113-0238	2		LPG Only
			.020" Oversize	113-0238-05	2		Standard
			.030" Oversize	113-0238-10	2		.005" Oversize
			.040" Oversize	113-0238-20	2		.010" Oversize
			Standard	113-0238-30	2		.020" Oversize
			.005" Oversize	113-0238-40	2		.030" Oversize
			.010" Oversize	6	805-0010	4	Bolt, Place - Connecting Rod Cap (Special)
			.020" Oversize	7	114-0036	2	Bushing, Piston Pin - Connecting Rod
			.030" Oversize	8			Bearing, Connecting Rod
			.040" Oversize	114-0188	4		Standard
			Standard	114-0188-02	4		.002" Undersize
			.005" Oversize	114-0188-10	4		.010" Undersize
			.010" Oversize	114-0188-20	4		.020" Undersize
			.020" Oversize	114-0188-30	4		.030" Undersize
			.030" Oversize				
			.040" Oversize				

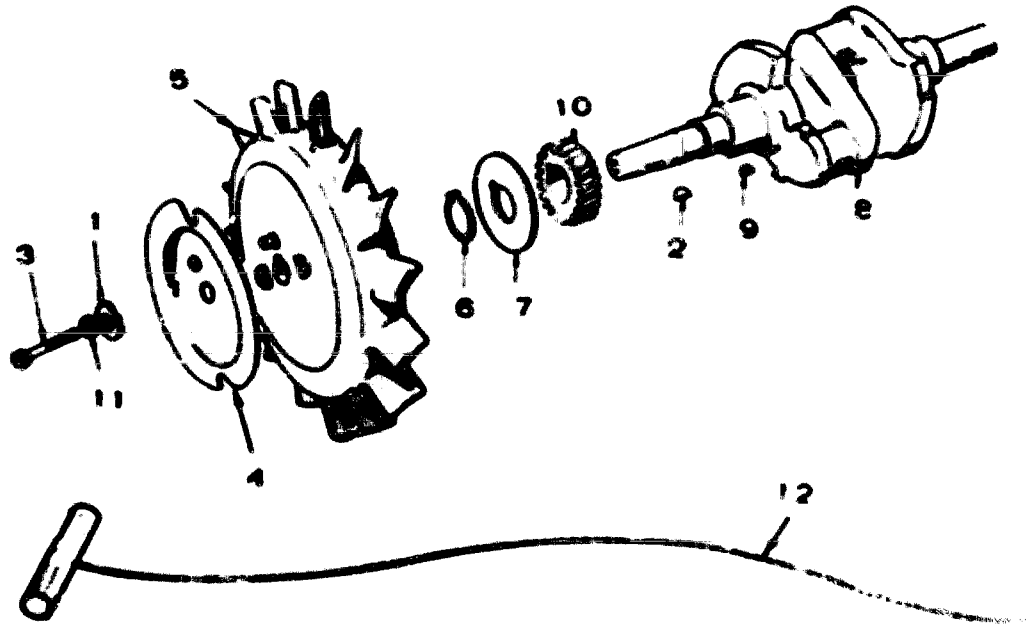
SPARK ADVANCE MECHANISM

KEY 1



REF. NO.	PART NO.	QTY. USED	PART DESCRIPTION
1	110-1283	1	Cover, Spark Advance Mechanism - Key 1
2	518-0185	2	Ring, Retaining - Key 1
3	160-0726	1	Retainer, Timing Weights Key 1
4	160-0727	1	Spring, Timing - Key 1
5	160-0789	2	Weight, Timing (Includes Pin and Magnet) - Key 1
6	160-0791	1	Cam, Timing (Includes Roll Pins) Key 1
7	516-0144	2	Pin, Roll - Key 1
8	105-0234	1	Camshaft (Includes Roll and Grooved Straight Pins) - Key 1
9	516-0144	2	Pin, Roll - Key 1
10	516-0146	2	Pin, Straight, Grooved Key 1

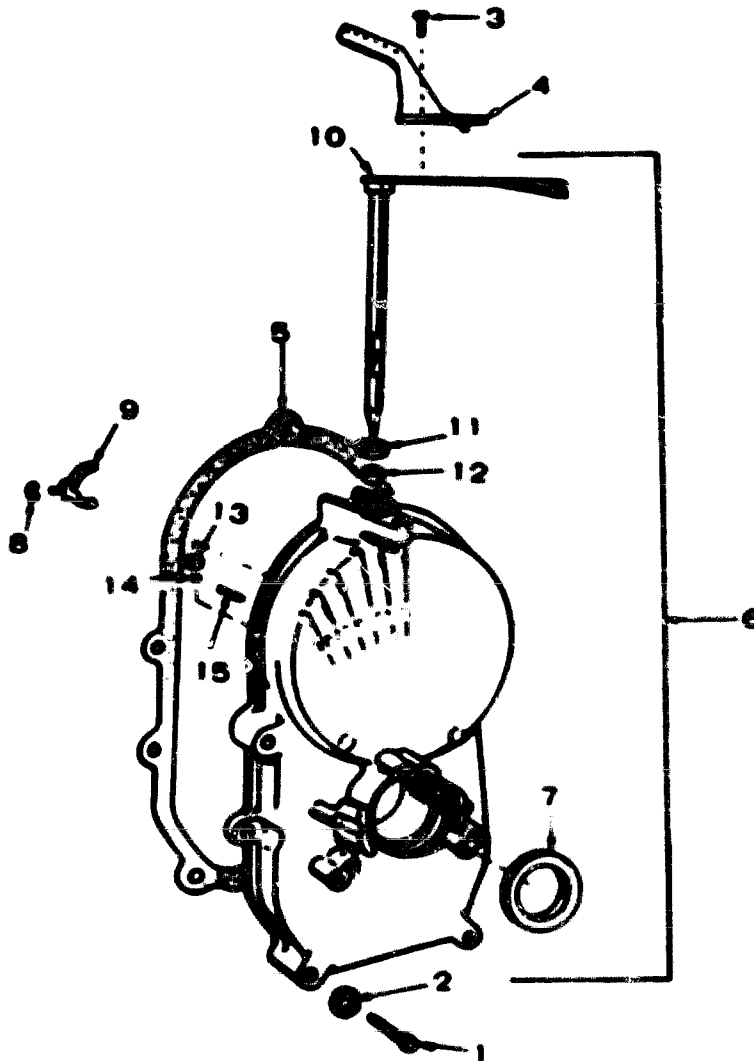
CRANKSHAFT AND FLYWHEEL



REF. NO.	PART NO.	QTY. USED	PART DESCRIPTION
1	526-0017	1	Washer, Flat - Wheel Mounting (15/32 ID x 1-1/4" OD x 1/4" Thk)
2	515-0022	1	*Key, Wheel Mounting
3	104-0170	1	Screw, Wheel Mounting (Special)
4	182-0308	1	Shaave, Starter Rope
5	FLYWHEEL		
	160-0761	1	Key 1 (Includes Magnets)
	134-0581	1	Key 2
6	518-0014	1	Lock, Crankshaft Gear Washer
7	104-0343	1	Washer, Crankshaft Gear Retaining (Special)
8	104-1323	1	Crankshaft (Includes Parts Marked *)
9	515-0001	1	*Key, Crankshaft Gear Mounting
10	104-0032	1	Gear, Crankshaft (Timing)
11	860-0065	1	Lockwasher, Flywheel Mounting (7/16")
12	182-0083	1	Rope, Manual Starting - Key 1

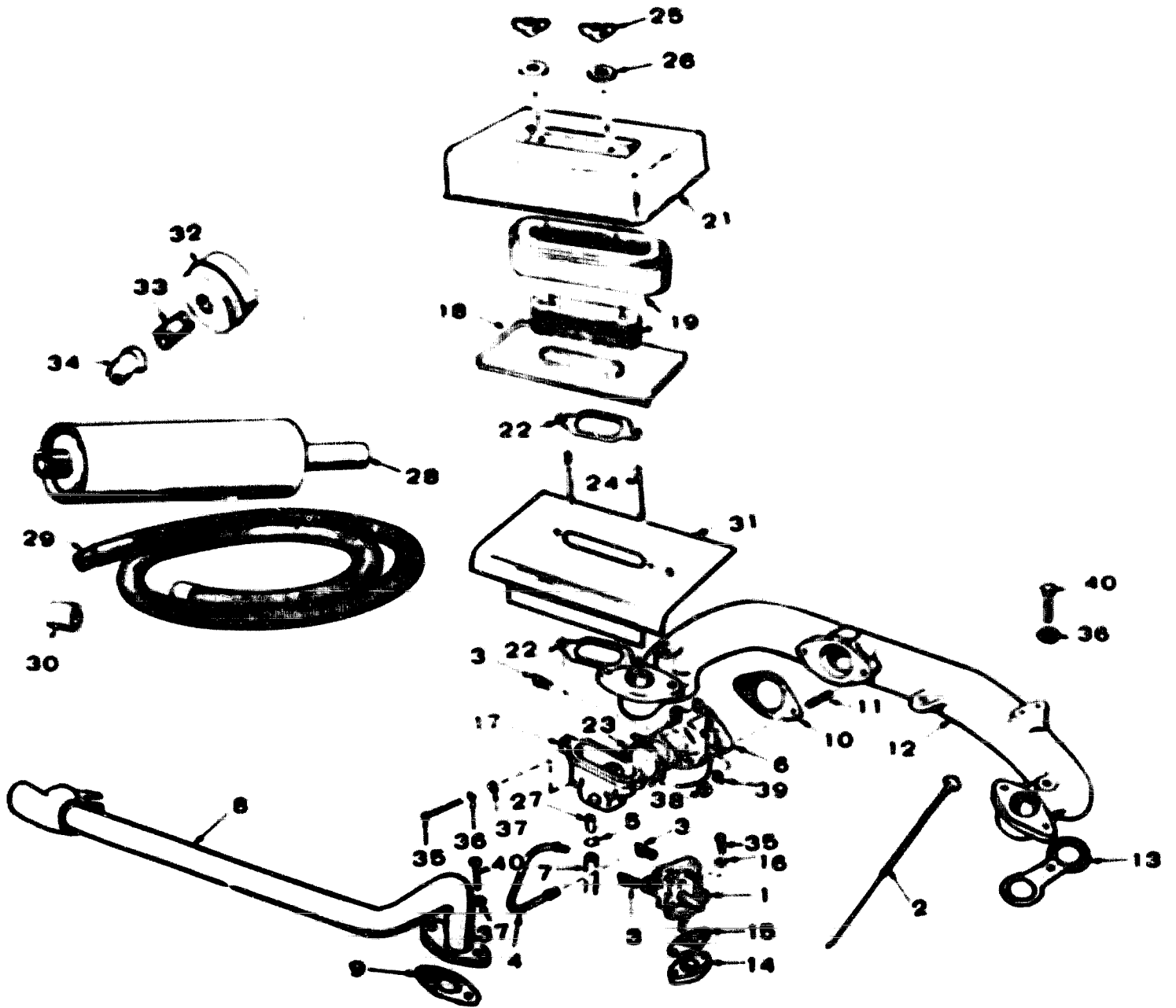
* - Parts included in 104-1323 Crankshaft Kit.

GEARCASE



REF. NO.	PART NO.	QTY. USED	PART DESCRIPTION
1	SCREW, CAP - HEX HEAD		
	809-0032	4	5/16-18 x 1-3/4"
	800-0034	1	5/16-18 x 2-1/4"
2	526-0085	5	Washer, Flat - Copper (21/64" ID x 9/16" OD x 1/16" Thk)
3	815-0181	1	Screw, Tapping - Hex Head with External Tooth Lockwasher (#10-32 x 1/2")
4	150-1073	1	Arm, Extension
5	103-0011	1	Gasket, Gearcase
6	103-0844	1	Gearcase Assembly (Includes the following components)
7	509-0040	1	Seal, Oil - Crankshaft
8	516-0129	1	Ring, Retaining - Yoke
9	150-0820	1	Yoke, Governor Shaft
10	150-1008	1	Shaft and Arm, Governor
11	509-0008	1	Seal, Oil
12	510-0013	1	Bearing, Needle
13	510-0008	1	Bearing, Needle
14	510-0014	1	Ball, Bearing
15	516-0130	1	Pin, Roll

FUEL SYSTEM

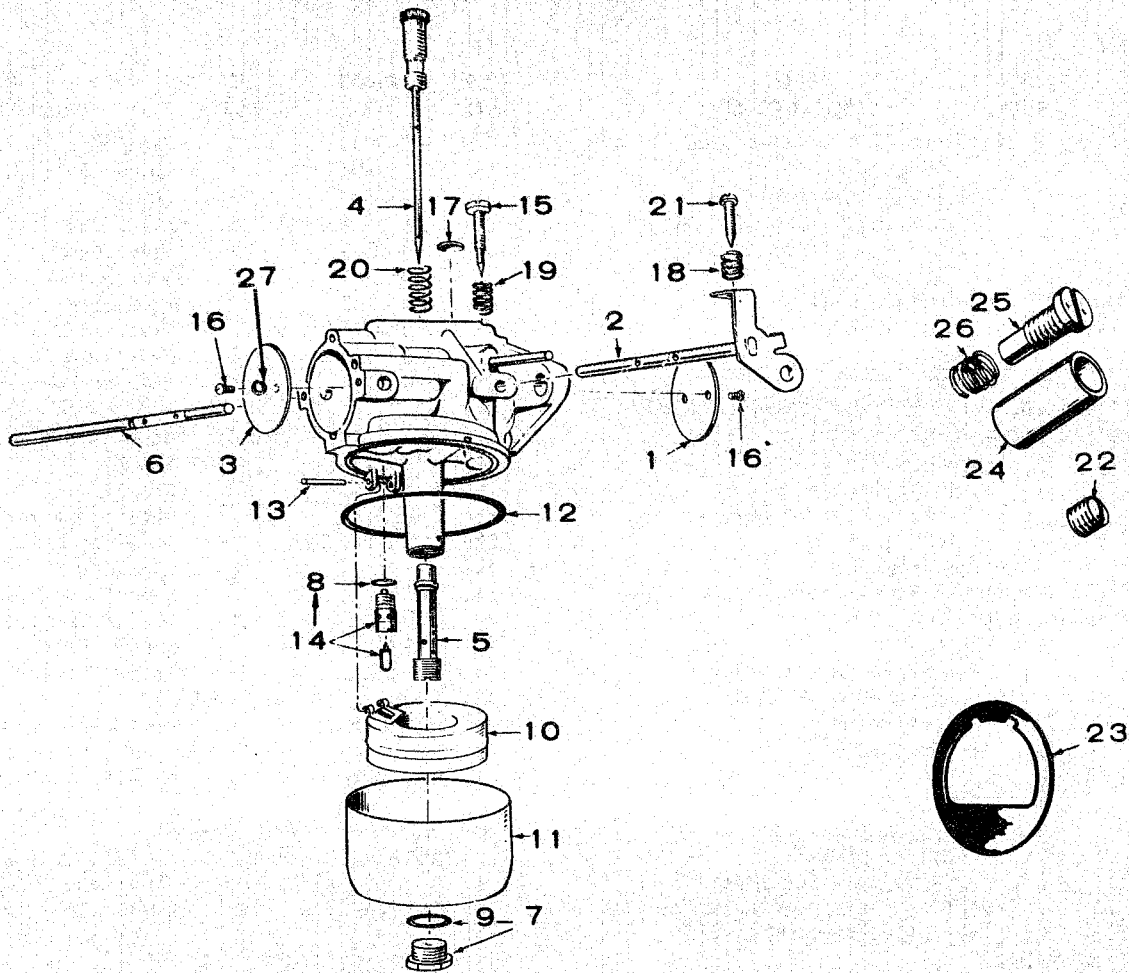


FUEL SYSTEM

REF. NO.	PART NO.	QTY. USED	PART DESCRIPTION	REF. NO.	PART NO.	QTY. USED	PART DESCRIPTION
1	149-1792	1	£Pump, Fuel - Kit (Includes Pump 149-1393)	20	505-0274	2	Plug, Pipe
2	149-1024	1	Rod, Fuel Pump Primer - Used on some early models - Key 1	21	140-0594	1	Cover, Air Cleaner
3	502-0065	3	Elbow - (1) Carburetor Inlet (2) Fuel Pump	22	140-0584	2	Gasket, Air Cleaner
4	LINE, FUEL-PUMP TO CARBURETOR			23	GASKET, ADAPTER TO CARBURETOR		
	149-1070	1	Spec A Only		140-0585	1	Spec A Only
	149-1096	1	Begin Spec B		140-0921	1	Spec E, Key 1
5	503-0170	2	Clamp, Hose		140-1302	1	Begin Spec B
6	£CARBURETOR, GASOLINE-KEY 1, MANUAL CHOKE			24	520-0621	2	Stud, Air Cleaner
	(See Separate Group for Components)			25	865-0020	2	Nut, Wing - Air Cleaner (1/4-20)
	143-0322	1	#Spec A Only	26	526-0063	2	Washer, Flat - Air Cleaner (17/64 ID x 7/16 OD x 1/32" Thk)
	141-0774	1	Spec A Replacement Kit (Includes a 141-0689 Carburetor)	27	TUBE, ADAPTER TO BREATHER HOSE		
	141-0689	1	Begin Spec B		123-0893	1	Key 2
	£CARBURETOR, GASOLINE-KEY 2, ELECTRIC CHOKE				123-0732	1	Key 1
	(See Separate Group for Components)			28	155-0077	1	Muffler, Exhaust
	143-0323	1	#Spec A Only	29	155-0492	1	Tube (36"), Flexible Exhaust
	141-0792	1	Spec A Replacement Kit (Includes a 141-0690 Carburetor)	30	505-0036	1	Coupling (1"), Exhaust Pipe
	141-0690	1	Begin Spec B	31	140-0829	1	Shield, Air Cleaner Heat
7	HOSE, BREATHER			32	155-0916	2	Muffler, Exhaust - Key 1
	503-0488	1	Spec A Only	33	505-0004	2	Nipple, Exhaust - Key 1
	503-0546	1	Begin Spec B	34	505-0333	2	Elbow, Exhaust (45°) - Key 1
8	154-0944	1	Manifold, Exhaust	35	SCREW, CAP-HEX HEAD		
9	154-0973	2	Gasket, Exhaust Manifold		813-0108	2	Air Cleaner Adapter Mounting (10-32 x 1-1/2")
10	141-0281	1	£Gasket, Carburetor Mounting		806-0009	2	Fuel Pump Mounting (1/4-20 x 1-1/4")
11	520-0526	2	Stud, Carburetor Mounting	36	WASHER, LOCK-SPRING		
12	MANIFOLD, INTAKE				850-0030	2	Air Cleaner Adapter Mounting (#10)
	154-0950	1	Key 2		850-0050	2	Intake Manifold Mounting (3/8")
	154-1081	1	Key 1	37	WASHER, FLAT		
	154-1231	1	Sets with Vacuum Switch for Gas Solenoid - Key 2		526-0241	2	Air Cleaner Adapter Mounting (.188 ID x .438 OD x .049 Thk)
13	154-0013	2	Gasket, Intake Manifold to Cylinder Block		526-0122	4	Exhaust Manifold Mounting - Early Models (11/32 ID x 23/32 OD x 1/8" Thk)
14	149-0045	1	Spacer, Fuel Pump Mounting	38	868-0002	2	Nut, Hex - Carburetor Mounting (5/16-24)
15	149-0003	2	£Gasket, Fuel Pump Mounting	39	854-0017	2	Washer, Shakeproof - Carburetor Mounting (5/16")
16	526-0063	2	Washer, Flat - Copper - Pump Mounting - Used Spec A through Serial #3479B6 During Spec D	40	SCREW, CAP-HEX HEAD		
17	ADAPTER, AIR CLEANER				821-0016	4	Exhaust Manifold Mounting (5/16-18 x 3/4")
	140-0760	1	Spec A Only		800-0057	2	Intake Manifold Mounting (3/8-16 x 2-3/4")
	140-1304	1	Begin Spec B				
18	PAN, AIR CLEANER						
	140-0828	1	Spec A Only				
	140-0595	1	Begin Spec B				
19	140-0636	1	Element and Retainer, Air Cleaner				

- Carburetors no longer available - order Replacement Kit.
 £ - Mounting Gasket supplied with new unit.

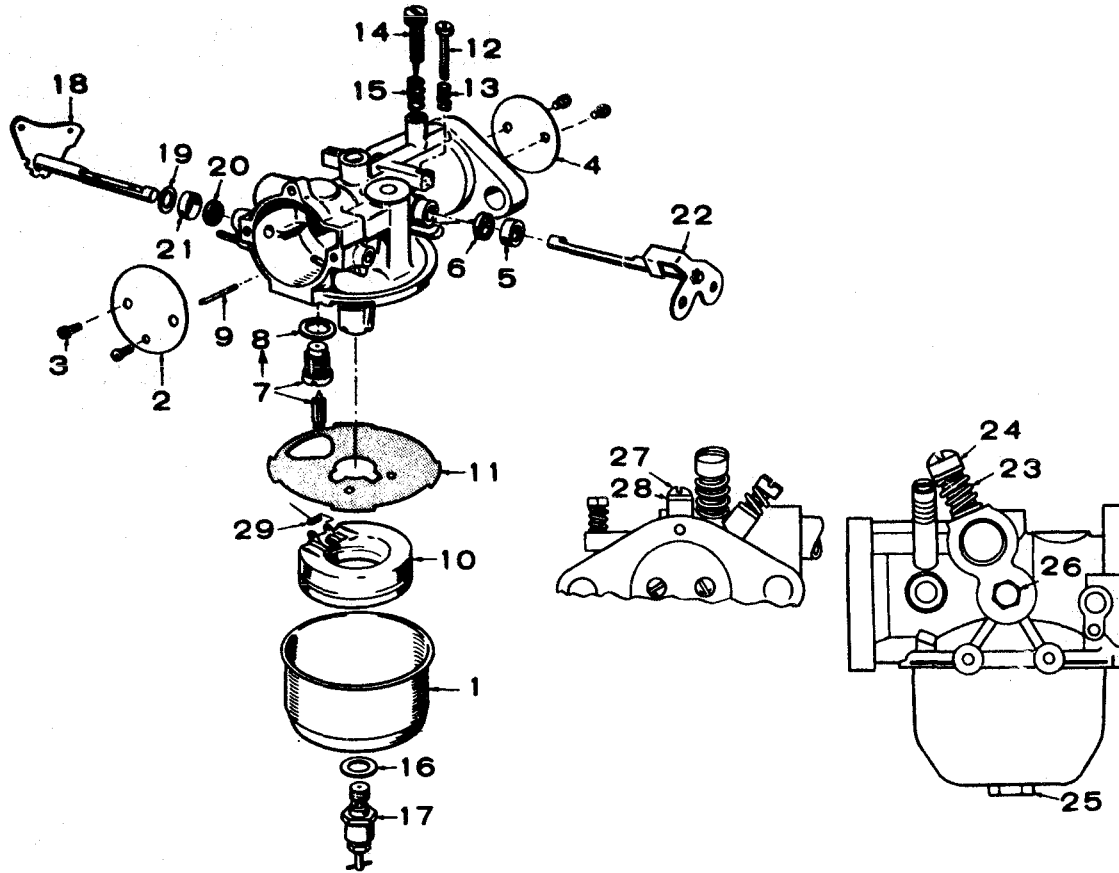
CARBURETOR PARTS (CARTER)



REF. NO.	PART NO.	QTY. USED	PART DESCRIPTION	REF. NO.	PART NO.	QTY. USED	PART DESCRIPTION
£	CARBURETOR, GASOLINE			13	141-0703	1	†#Pin, Float Lever
	143-0322	1	Manual Choke - Key 1	14	143-0341	1	#†Valve, Fuel Inlet
	143-0323	1	Electric Choke - Key 2	15	143-0213	1	Screw, Idle Adjusting (2 for Gas-Gasoline Units) (Special)
£	CARBURETOR, GAS-GASOLINE			16	812-0014	4	†Screw (#3-48 x 3/16) - Choke and Throttle Valve
	143-0338	1	Manual Choke - Key 1	17	143-0110	1	Plug, Expansion
	143-0339	1	Electric Choke - Key 2	18	143-0214	1	Spring, Throttle Adjusting Screw
£	143-0340	1	Carburetor, Gas Only	19	143-0112	1	Spring, Idle Adjusting Screw (2 for Gas-Gasoline Units)
	143-0332	1	Repair Kit (Includes Parts Marked †)	20	143-0114	1	#Spring, High Speed Adjusting Needle
	143-0201	1	†Gasket Kit (Includes Parts Marked *)	21	143-0215	1	Screw, Throttle Lever, Adjusting (Special)
	141-0281	1	*Gasket, Carburetor Flange	22	505-0008	1	Plug (1/8") - Gas Only Unit
1	143-0202	1	Valve, Throttle	23	143-0342	1	#Diaphragm, Fuel Splash
2	143-0331	1	Shaft and Lever, Throttle	24	145-0308	1	Tube, Gas Inlet - Gas and Gas-Gasoline Units
3	VALVE, CHOKE			25	148-0589	1	Needle, Gas Adjusting - Gas and Gas-Gasoline Units
	143-0220	1	# Manual Choke - Key 1	26	148-0590	1	Spring, Gas Adjusting - Gas and Gas-Gasoline Units
	143-0204	1	# Electric Choke - Key 2	27	854-0003	4	†Washer, Lock-It (#3)
4	143-0330	1	# †Needle, Idle Jet and High Speed Adjusting				
5	143-0329	1	# †Nozzle				
6	SHAFT, CHOKE						
	143-0221	1	# Manual Choke - Key 1				
	143-0315	1	# Electric Choke - Key 2				
7	143-0208	1	Screw and Gasket, Bowl				
8	143-0015	1	# *Gasket, Fuel Inlet Valve				
9	143-0209	1	*Gasket, Bowl Screw				
10	143-0105	1	# Float and Lever				
11	143-0210	1	Bowl				
12	143-0077	1	*Gasket, Bowl Ring				

- Parts not used in Gas Only Carburetor.
 * - Included in 143-0201 Gasket Kit.
 † - Included in 143-0332 Repair Kit.
 £ - Mounting Gasket supplied with new unit.

CARBURETOR PARTS (ZENITH)



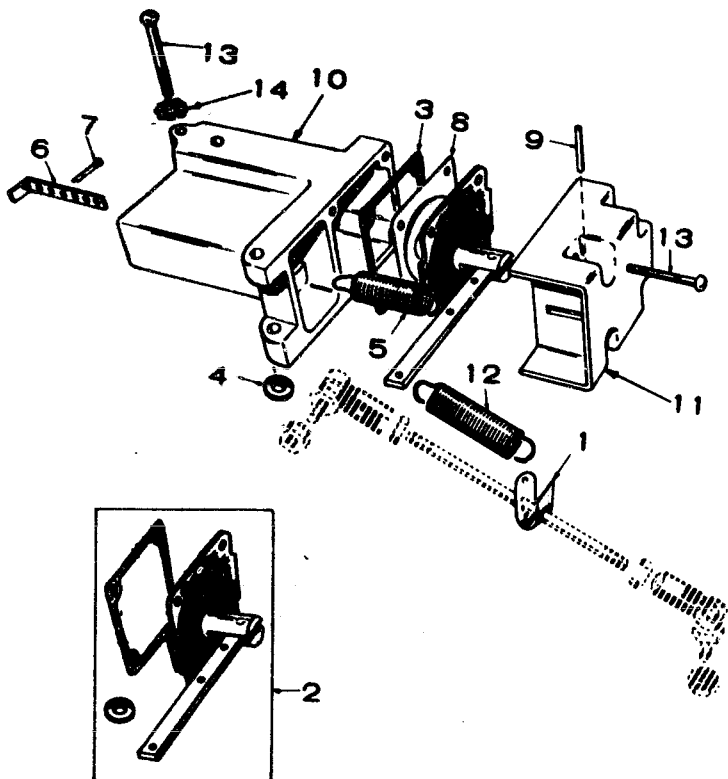
REF. NO.	PART NO.	QTY. USED	PART DESCRIPTION	REF. NO.	PART NO.	QTY. USED	PART DESCRIPTION
£CARBURETOR, GASOLINE				15	SPRING, IDLE NEEDLE		
	141-0689	1	Manual Choke - Key 1	141-0710	1	Gasoline and Gas Only Units	
	141-0690	1	Electric Choke - Key 2	141-0710	2	Gas-Gasoline Units	
£CARBURETOR, GAS-GASOLINE				16	141-0077	1	†*Washer, Main Jet Assembly (Special)
	141-0721	1	Manual Choke - Key 1	17	141-0712	1	Jet Assembly (Adjustable), Main (Not used on Gas only units)
	141-0722	1	Electric Choke - Key 2	18	SHAFT, CHOKE (Not Used On Gas Only Units)		
£	141-0726	1	Carburetor, Gas Only	141-0742	1	Manual Choke Units	
	141-0747	1	Repair Kit (Includes Parts Marked *)	141-0679	1	Electric Choke Gasoline Units	
	141-0748	1	Gasket Kit (Includes Parts Marked †)	141-0679	1	Electric Choke Gas-Gasoline Units	
	141-0281	1	†*Gasket, Carburetor Flange	19	141-0699	1	Washer - Key 1 (Not used on Gas only units) (Special)
1	141-0708	1	Bowl, Fuel	20	141-0697	1	†*Seal, Felt - Key 1 (Not used on Gas only units)
2	141-0741	1	Plate, Choke (Not used on Gas Only Units)	21	141-0203	1	*Retainer, Felt Seal - Key 1 (Not used on Gas only units)
3	141-0698	4	Screw and Washer - Choke and Throttle Plate Mounting (2 used on Gas only units)	22	141-0709	1	Shaft and Lever, Throttle
4	141-0706	1	Plate, Throttle	23	141-0733	1	Spring, Main Gas Needle - Gas and Gas-Gasoline Units
5	141-0705	1	*Retainer, Seal	24	141-0734	1	Needle, Main Gas Adjusting - Gas and Gas-Gasoline Units
6	141-0661	1	†*Seal, Rubber	25	141-0736	1	Nut, Bowl - Gas Only Units
7	141-0830	1	*Valve Seat Assembly, Fuel (Not used on Gas only units)	26	141-0737	1	Plug, Pipe (1/8") - Gas Only Units
8	141-0811	1	†Washer, Fuel Valve Seat (Not used on Gas only units) (Special)	27	141-0738	1	Screw - Gas Only Units (Special)
9	141-0703	1	*Shaft, Float (Not used on Gas only units)	28	141-0739	1	Washer - Gas Only Units (Special)
10	141-0702	1	Float Assembly (Not used on Gas only units)	29	141-0799	1	*Spring, Float (Not Used on Gas Only Carburetors)
11	141-0701	1	†*Gasket, Bowl to Body				
12	141-0700	1	Screw, Throttle Stop (Special)				
13	141-0711	1	Spring, Throttle Stop				
14	NEEDLE, IDLE ADJUSTING						
	141-0713	1	Gasoline and Gas Only Units				
	141-0713	2	Gas-Gasoline Units				

£ - Mounting Gasket supplied with new unit.

* - Included in 141-0747 Repair Kit.

† - Included in 141-0748 Gasket Kit.

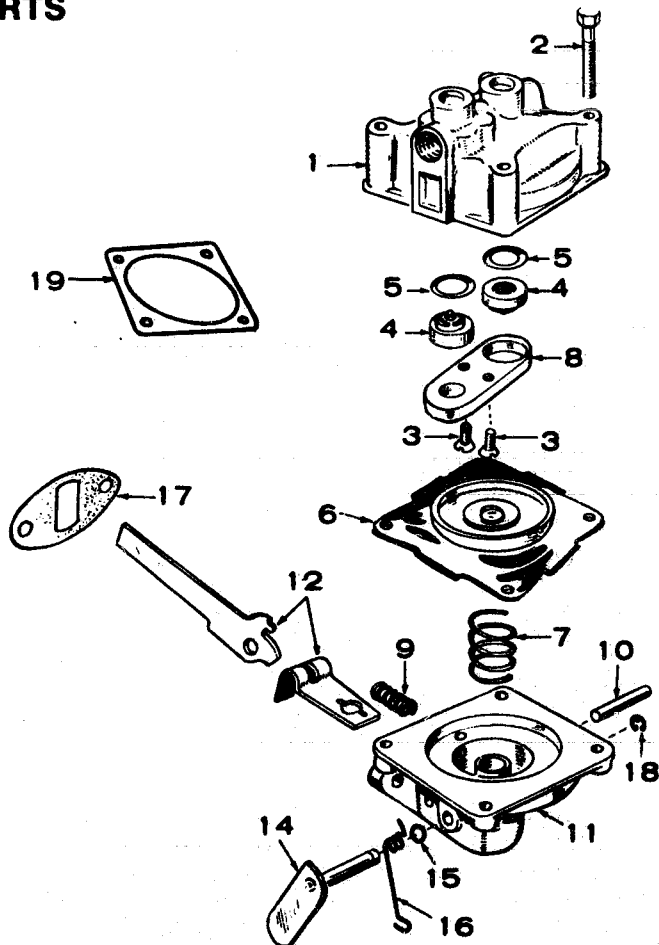
VACUUM SPEED BOOSTER



REF. NO.	PART NO.	QTY. USED	PART DESCRIPTION
	150-1030	1	Kit, Vacuum Speed Booster Replacement (Includes Parts Marked *)
1	150-0430	1	Bracket, Spring to Governor Link
2	150-1031	1	*Kit, Diaphragm Replacement (Includes Gaskets)
3	150-0668	1	*Gasket, Diaphragm Plate
4	150-0425	1	*Gasket, Booster to Manifold
5	150-1354	1	*Spring, Internal
6	150-0376	1	*Bracket, Internal Spring Adjustment
7	516-0039	1	*Pin (3/32 x 5/8"), Cotter Adjusting Bracket
8	150-0666	1	*Plate, Diaphragm
9	516-0085	1	*Pin (3/32 x 3/4") - Diaphragm Lever Pivot
10		1	*Housing, Vacuum Booster (Not Sold Separately)
11		1	*Cover, Vacuum Booster Housing (Not Sold Separately)
12	150-0471	1	*Spring, External
13	SCREW		
	815-0148	4	*Cover, Housing - Slotted, Hex Head (8-32 x 7/8")
	813-0110	2	Vacuum Speed Booster Mounting - Round Head, Machine (10-32 x 2")
14	853-0008	2	Washer, Shakeproof - Vacuum Speed Booster Mounting - ET (#10)

FUEL PUMP PARTS

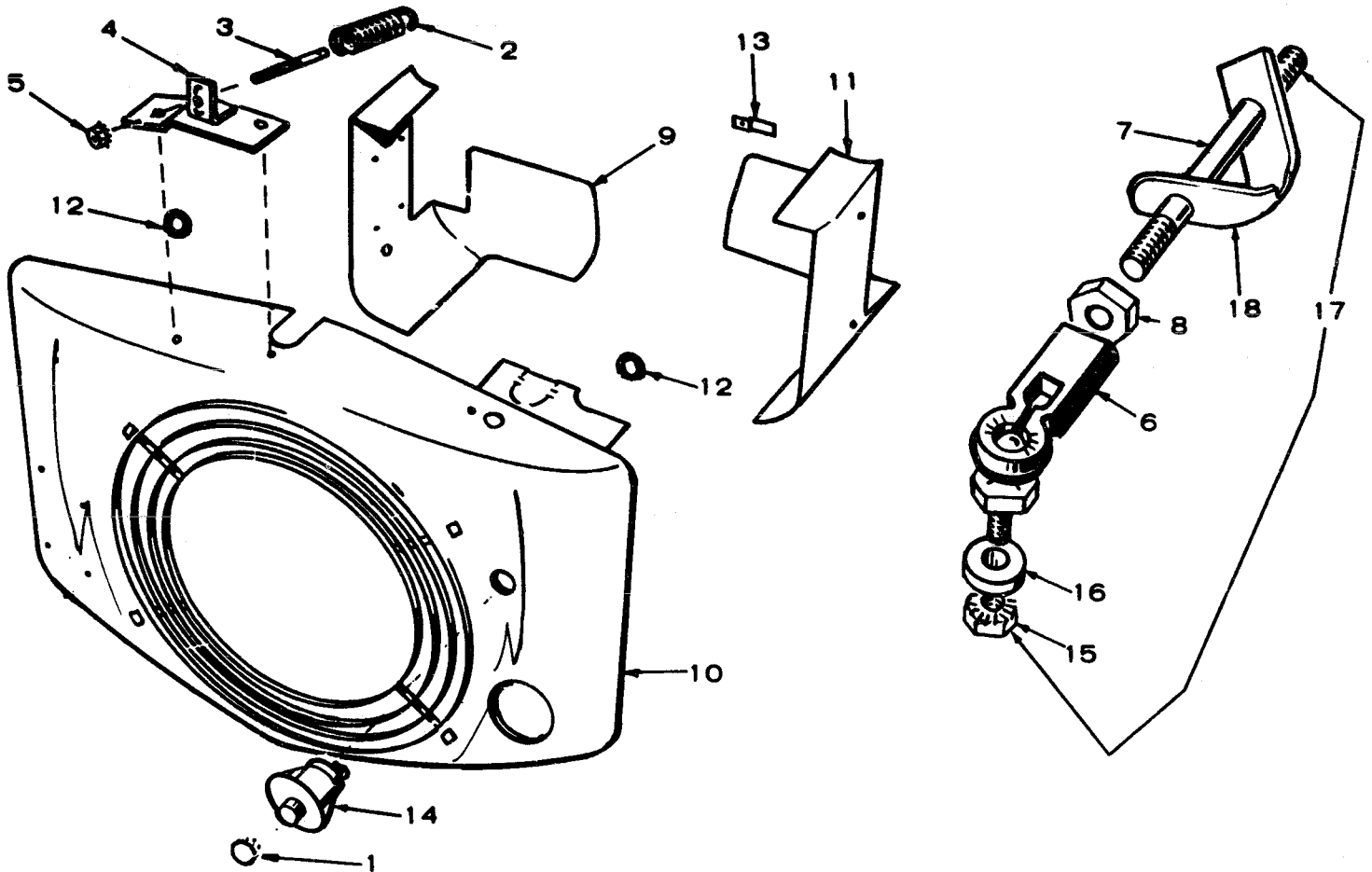
REF. NO.	PART NO.	QTY. USED	PART DESCRIPTION
	149-1393	1	£ Pump, Fuel (Illustrated in Fuel System Group)
	149-0526	1	Repair Parts Kit (Includes Parts Marked *)
1		1	Body, Upper (Not Sold Separately)
2	815-0148	4	Screw (#8-32 x 7/8"), Slotted Hex Head
3	815-0147	2	Screw, Phillips Self Tapping (#6-32 x 5/8") - Valve Retainer
4	149-0096	2	*Valve and Cage
5	149-0095	2	*Gasket, Valve
6	149-0582	1	*Diaphragm Assembly
7	149-0672	1	*Spring
8	149-0539	1	Retainer, Valve Cage
9	149-0675	1	*Spring
10	516-0113	1	Pin, Rocker Arm
11		1	Body, Lower (Not Sold Separately)
12	149-0710	1	Link and Arm, Rocker (Only As a Set)
14	149-1042	1	Lever, Primer
15	509-0065	2	Seal, "O" Ring
16	149-1044	1	Spring, Primer Lever
17	149-0003	1	£ *Gasket, Pump Mounting
18	518-0129	1	Ring, Retainer - Primer Lever
19	149-0858	1	*Gasket, Diaphragm - Lower Side



* - Included in 149-0526 Repair Kit.

£ - Mounting Gasket supplied with new unit.

AIR HOUSING AND GOVERNOR

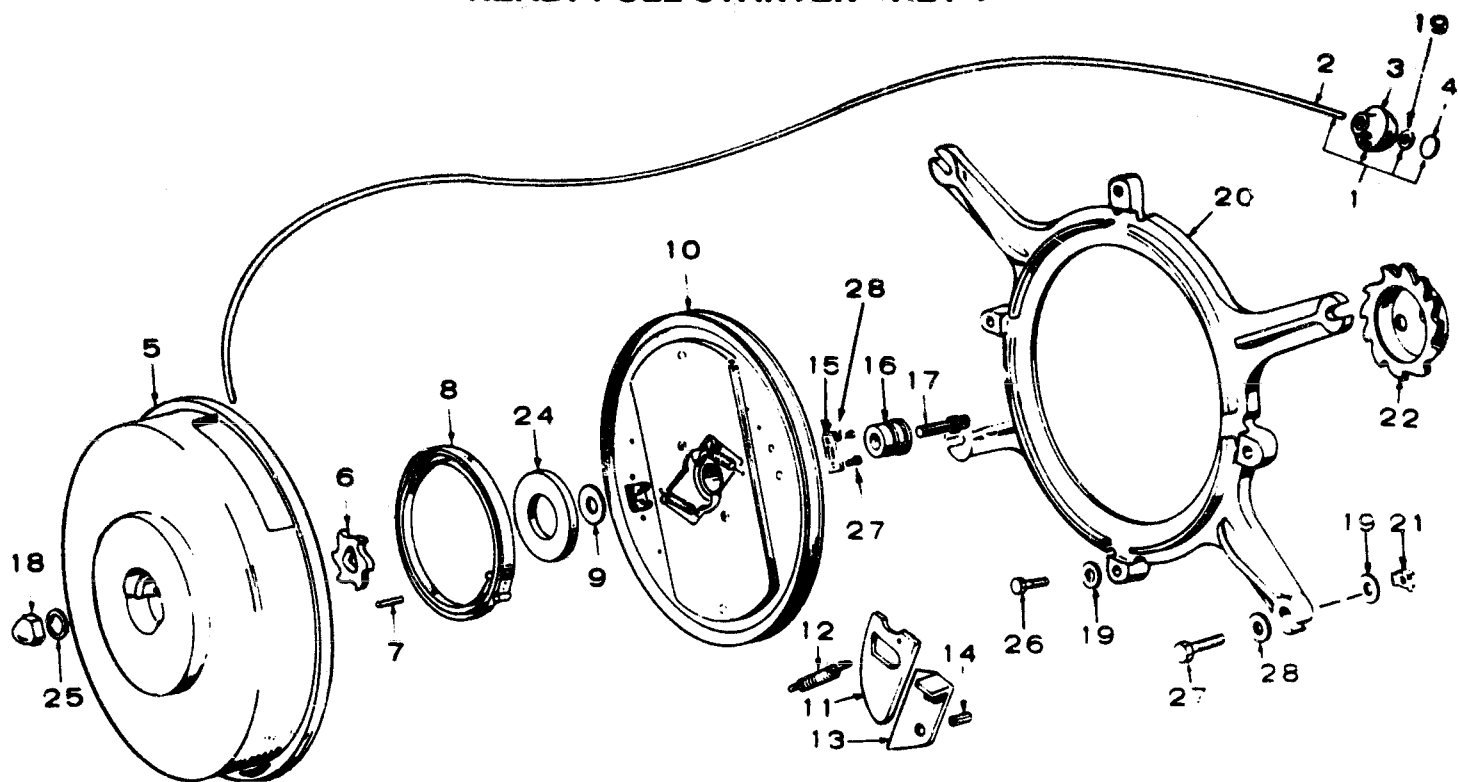


REF. NO.	PART NO.	QTY. USED	PART DESCRIPTION
1	517-0021	1	Button, Dot (For Units Without Stop Switch)
2	150-0098	1	Spring, Governor
3	150-1023	1	Stud, Governor Adjusting
4	150-1262	1	Bracket, Governor Adjusting Stud
5	870-0131	1	*Nut, Hex - Governor Adjusting WET (10-32)
6	JOINT, BALL		
	150-0974	2	Spec A Only
	150-0939	2	Begin Spec B - Plastic
	150-0639	2	*Begin Spec B - Metal
7	LINK, THROTTLE		
	520-0187	1	*Spec A Only
	520-0623	1	Begin Spec B - Used with Plastic Ball Joints Only
	520-0187	1	Begin Spec B - Used with Metal Ball Joints Only
8	870-0053	2	*Nut, Hex (10-32)

REF. NO.	PART NO.	QTY. USED	PART DESCRIPTION
9	134-0589	1	Housing, Cylinder Air - Left
10	HOUSING, BLOWER		
	134-1579	1	Key 1
	134-1721	1	Key 2
11	134-0588	1	Housing, Cylinder Air - Right
12	508-0095	2	Grommet, Blower Housing - Key 1
13	134-0599	1	Clip, Cylinder Air Housing
14	313-0018	1	Switch, Stop Button - Key 1 (For Lead Use 334-0028 Wire)
15	870-0131	2	Nut (10-32), Self-Locking - Ball Joint
16	526-0196	2	*Washer, Flat - Ball Joint (7/32 ID x 7/16 OD x 1/8" Thk)
17	150-1080	1	Linkage Assembly, Governor (Includes Parts Marked *)
18	150-0430	1	*Bracket, Governor Spring

* - Parts Included in 150-1080 Governor Linkage Assembly.

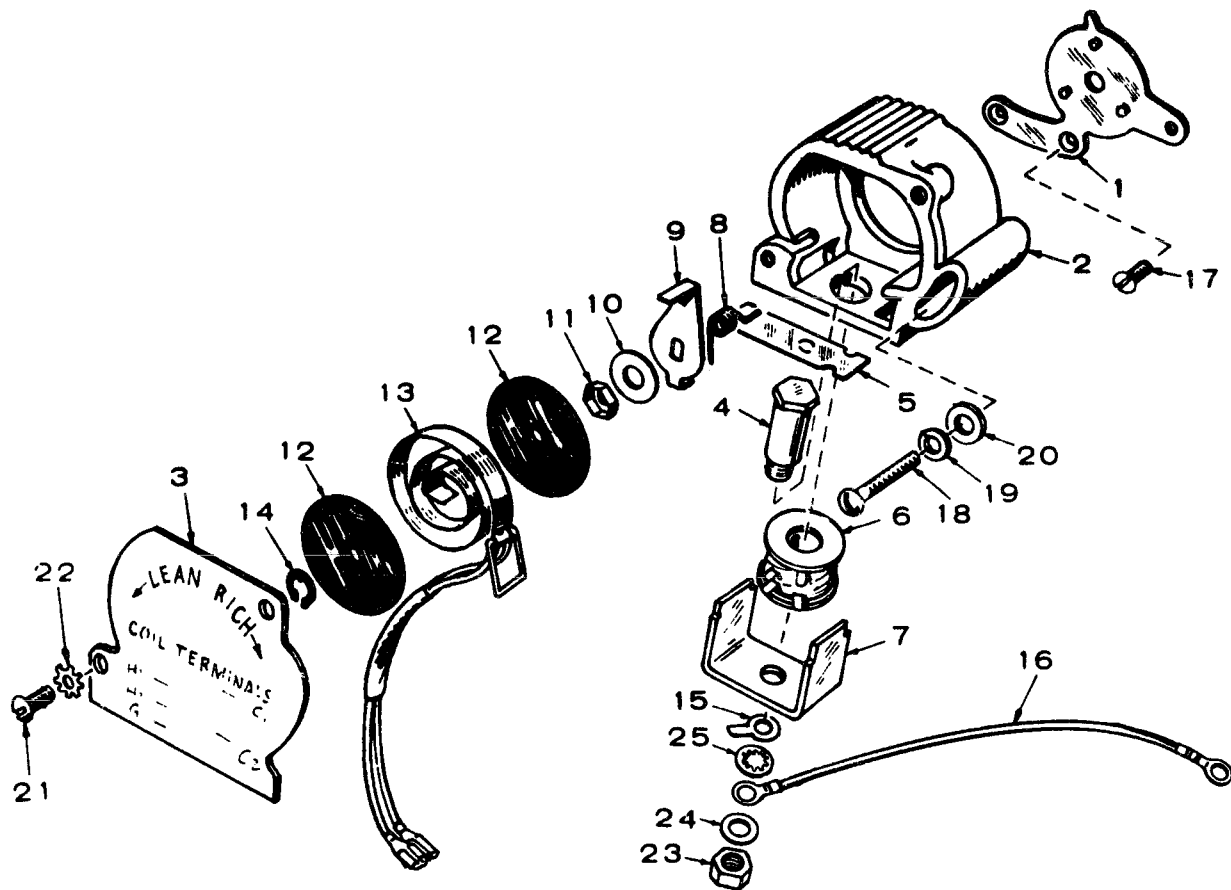
READI-PULL STARTER - KEY 1



REF NO.	PART NO.	QTY USED	PART DESCRIPTION	REF NO.	PART NO.	QTY USED	PART DESCRIPTION
	192-0325	1	Starter Kit - Complete (Includes Mounting Ring and Ratchet Wheel)	19			Washer, Flat
1	192-0045	1	Rope and Grip Assembly		526-0180	4	Starter to Mounting Ring
2	192-0043	1	Rope, Starter (83")		526-0169	1	Starter Rope Grip
3	192-0044	1	Grip, Starter Rope - Rubber		526-0130	4	Starter Ring to Blower Housing (1/16" Thick)
4	517-0025	1	Plug, Starter Rope Grip		526-0158	4	Starter Ring to Blower Housing (1/8" Thick)
5	192-0152	1	Cover, Starter	20	192-0186	1	Ring - Starter to Blower Housing
6	192-0153	1	Gear, Anti-Backlash	21	870-0110	4	Nut, Speed Grip - Starter Ring to Blower Housing (1/4-20)
7	516-0138	1	Pin (3/16 x 5/8") - Recoil Spring	22	192-0309	1	Wheel, Ratchet
8	192-0039	1	Spring, Recoil	24	526-0168	1	Washer, Flat - Recoil Spring Retainer (1-15/32 ID x 3 OD x 3/64" Thk)
9	526-0123	1	Washer, Thrust - Sheave Bushing to Cover (25/64 ID x 1-1/4 OD x .0598 Thk)	25	850-0050	1	Washer, Lock - Cover Nut (3/8")
10	192-0180	1	Sheave, Rope (Includes Parts Marked *)	26			Screw, Cap - Hex Head
11	192-0172	2	*Pawl		800-0007	4	Starter Ring to Blower Housing (1/4-20 x 1")
12	192-0165	2	*Spring, Pawl		815-0137	4	Starter to Mounting Ring (1/4-20 x 5/8")
13	192-0168	2	*Arm, Ratchet	27	815-0137	2	*Screw, Hex Head - Rope Clamp Mounting (1/4-20 x 5/8")
14	516-0110	4	*Pin (5/16 x 1/2"), Roll (2) Ratchet Arm, (2) Pawl	28	526-0015	2	*Washer, Flat - Rope Clamp Mounting (9/32 ID x 9/16 OD x 1/16" Thk)
15	192-0167	1	*Clamp, Rope				
16	192-0163	1	Bearing, Sheave Hub (Bronze)				
17	192-0323	1	Screw (Special)				
18	862-0003	1	Nut, Hex (3/8-16)				

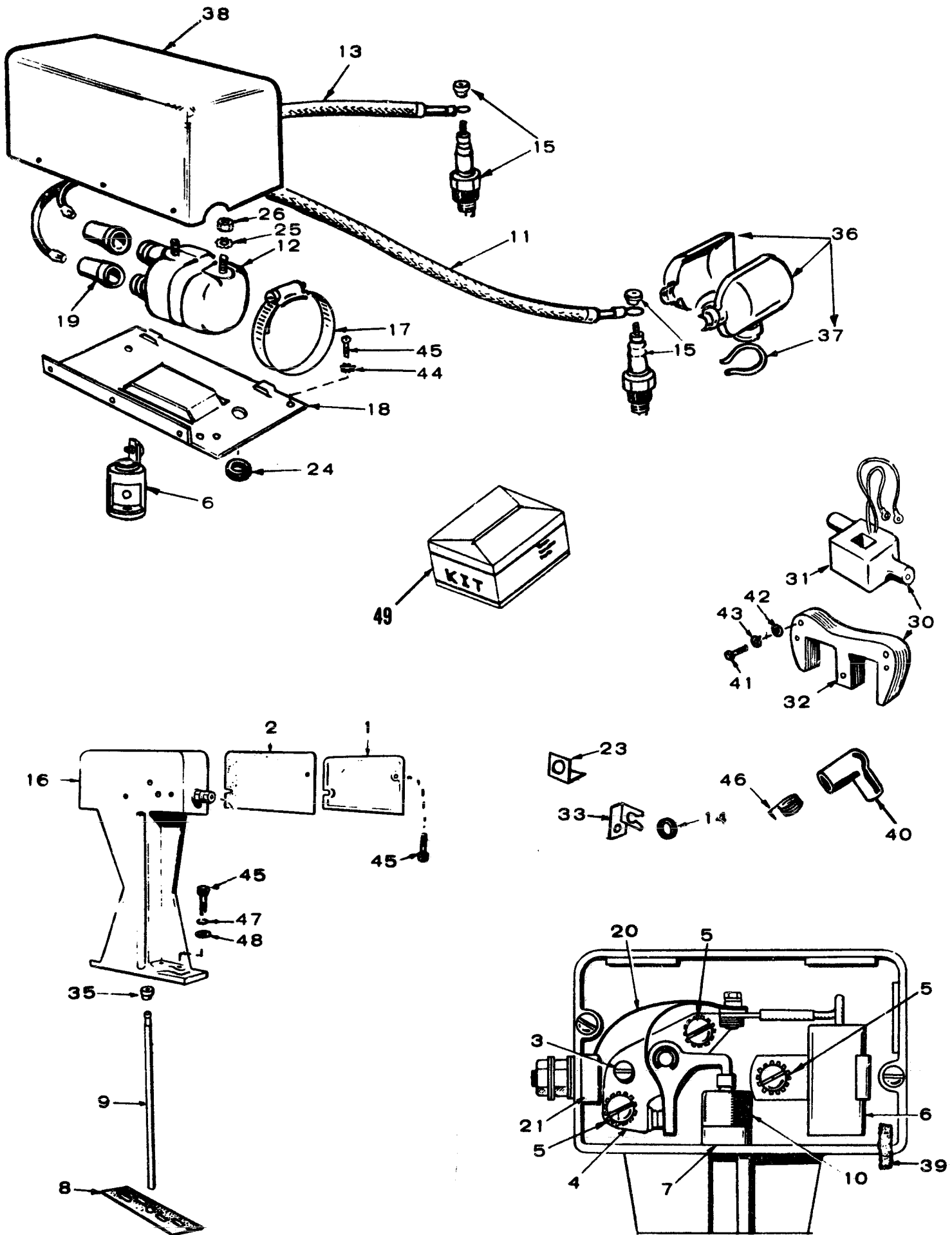
* - Included in 192-0180 Rope Sheave Assembly.

THERMO-MAGNETIC CHOKE



REF. NO.	PART NO.	QTY. USED	PART DESCRIPTION
	153-0429	1	Replacement Kit (Includes Complete Choke - Less Leads)
1	153-0385	1	Plate, Mounting
2	153-0386	1	Body
3	153-0389	1	Cover
4	153-0391	1	Core, Solenoid
5	153-0395	1	Armature
6	307-1203	1	Coil, Solenoid Assembly
7	153-0392	1	Frame, Solenoid
8	153-0387	1	Spring
9	153-0390	1	Lever, Thermostat
10	526-0018	1	Washer, Flat (17/64" ID x 5/8" OD x 1/16" Thk)
11	870-0134	1	Nut (1/4-20)
12	153-0399	2	Insulator
13	153-0400	1	Heater Assembly
14	518-0129	1	Ring, Retaining
15	332-0876	1	Terminal Ground
16	LEAD, CHOKE		
	336-1550	1	Choke to Ground
	336-1549	1	Choke Solenoid Ground
17	815-0161	2	Screw, Flat Head (10-32 x 3/8") - Plate Mounting
18	813-0107	1	Screw, Round Head - Choke Adjustment (10-32 x 1-1/4")
19	850-0030	1	Washer (#10), Lock
20	526-0008	1	Washer, Flat (13/64 ID x 7/16 OD x 1/32" Thk)
21	812-0076	2	Screw, Round Head - Machine Cover Mounting (8/32 x 5/16")
22	854-0007	2	Washer, Lock-IT (#8)
23	862-0015	1	Nut, Hex - Jam - Choke Coil (5/16-18)
24	526-0022	1	Washer, Flat (21/64 ID x 9/16 OD x 1/16" Thk)
25	854-0017	1	Washer, Lock - IT (5/16")

IGNITION SYSTEM

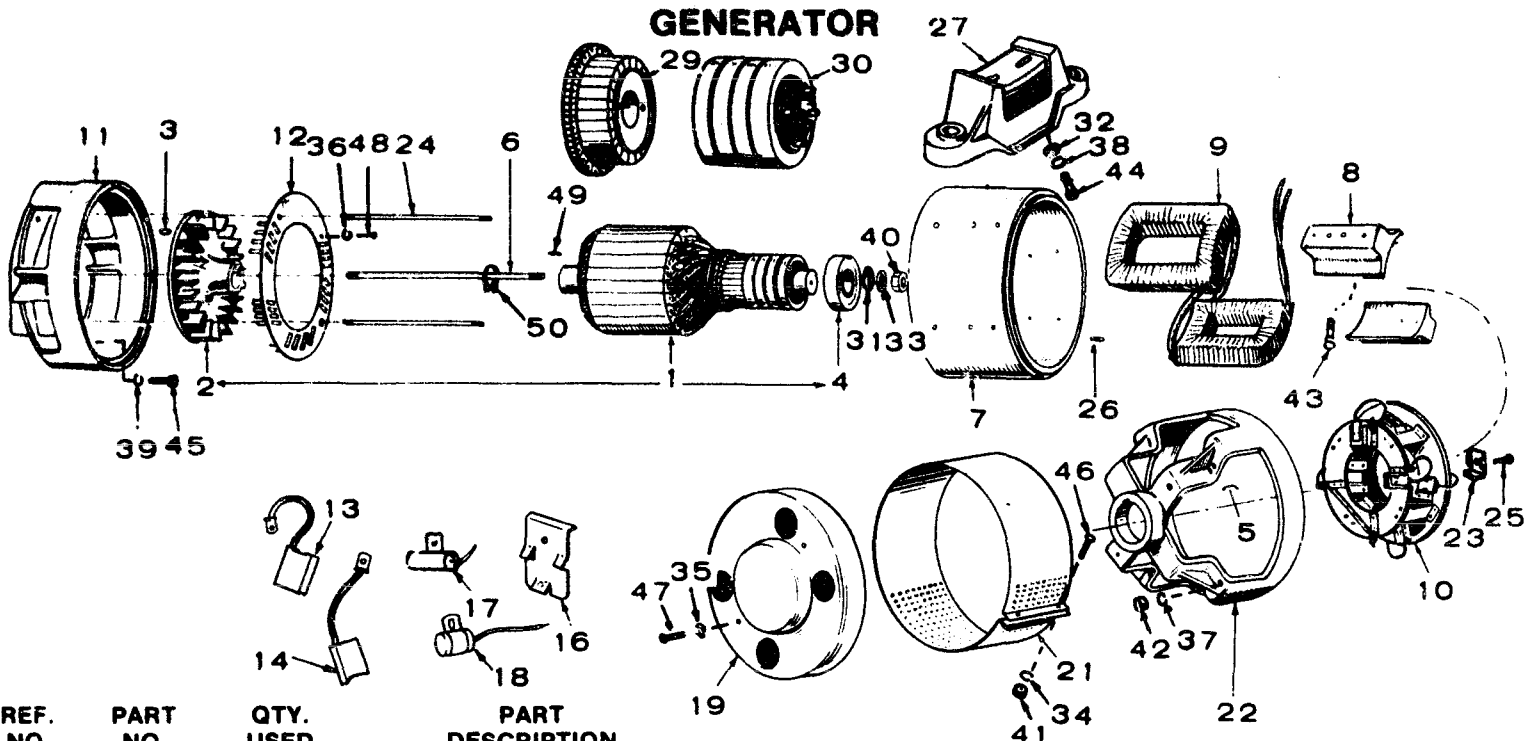


IGNITION SYSTEM

REF NO.	PART NO.	QTY USED	PART DESCRIPTION	REF NO.	PART NO.	QTY USED	PART DESCRIPTION
1	160-0930	1	*Cover, Breaker Box	30	160-0752	1	Magneto Stator Assembly - Key 1 (Includes Parts Marked **)
2	160-0150	1	*Gasket, Breaker Box Cover				
3	160-0075	1	*Cam, Point Gap Adjusting				
4	160-0002	1	**Point Set, Breaker	31	160-0750	1	**Coil, Magneto Stator - Key 1
5	815-0281	3	*Screw, Round Head Drive (#4 x 1/8") Breaker Points and Condenser Mounting	32	160-0749	1	**Pole Shoe, Magneto Stator - Key 1
6			Condenser	33	167-0188	4	Clip, Spark Plug Cables - Key 1
	312-0069	1	** Breaker Points	35	160-0929	1	*Bushing, Breaker Box (Bottom)
	312-0162	1	Ignition Coil - Key 2	36	167-0067	2	Shield, Spark Plug (Includes Clamp)
7	160-0931	1	*Guide, Plunger	37	167-0064	2	Clamp, Spark Plug Shield
8	160-0043	1	Gasket, Breaker Box Mounting	38	166-0385	1	Cover, Ignition Coil
9	160-0723	1	*Plunger	39	160-0261	1	*Wick, Breaker Box
10	160-0382	1	*Diaphragm, Breaker Box	40	166-0250	2	Cover, Spark Plug
11			Cable, Spark Plug - Right Hand	41	815-0259	2	Screw, Hex Head - Pole Shoe Mounting (1/4-20 x 1-1/4")
	167-1467	1	Shielded	42	526-0184	2	Washer, Flat - Pole Shoe Mounting (17/64 ID x 5/8 OD x 1/8" Thk)
	167-1595	1	Unshielded	43	850-0040	2	Washer, Lock - Pole Shoe Mounting (1/4")
12	166-0346	1	Coil, Ignition	44	853-0008	2	Washer, Shakeproof - Coil Bracket Mounting - ET (#10) Screw
13			Cable, Spark Plug - Left Hand	45			
	167-1468	1	Shielded				
	167-1595	1	Unshielded				
14	508-0095	2	Grommet, Rubber - Key 1				
15			Plug, Spark				
	167-0241	2	Non-Resistor Type				
	167-0237	2	Resistor Type				
16	160-1135	1	Box, Breaker (Includes Parts Marked *)		802-0035	2	* Socket Head - Breaker Box Mounting (1/4-20 x 7/8")
17	503-0514	1	Clamp, Coil - Key 2		812-0077	2	* Round Head - Machine - Breaker Box Cover Mounting (8/32 x 3/8")
18	166-0464	1	Bracket, Coil Mounting - Key 2				
19	160-0558	2	Nipple, Rubber - Coil		813-0100	2	Round Head - Machine - Coil Bracket Mounting (10-32 x 1/2")
20	160-0428	1	*Strap, Point Set to Terminal Block				
21	160-0349	1	*Terminal Assembly, Breaker Box	46	166-0253	2	Spring, Contact - Spark Plug Cover
23	332-0273	1	Clip, Magneto Lead - Key 1	47	850-0040	2	*Washer, Lock (1/4")
24			Grommet	48	526-0214	2	*Washer, Flat (17/64 ID x 1/2 OD x 1/16" Thk)
	508-0002	1	Magneto Lead Clip - Key 1	49	160-0836	1	Kit, Tune Up (Includes Parts Marked +)
	508-0114	1	Ignition Coil Lead - Key 2				
25	854-0010	2	Washer, Lock - IT (#10)				
26	870-0053	2	Nut, Hex - Coil Leads (10-32)				

* - Parts Included in 160-1135 Breaker Box Assembly.
 ** - Parts Included in 160-0752 Magneto Stator Assembly.
 + - Parts Included in 160-0836 Tune Up Kit.

GENERATOR

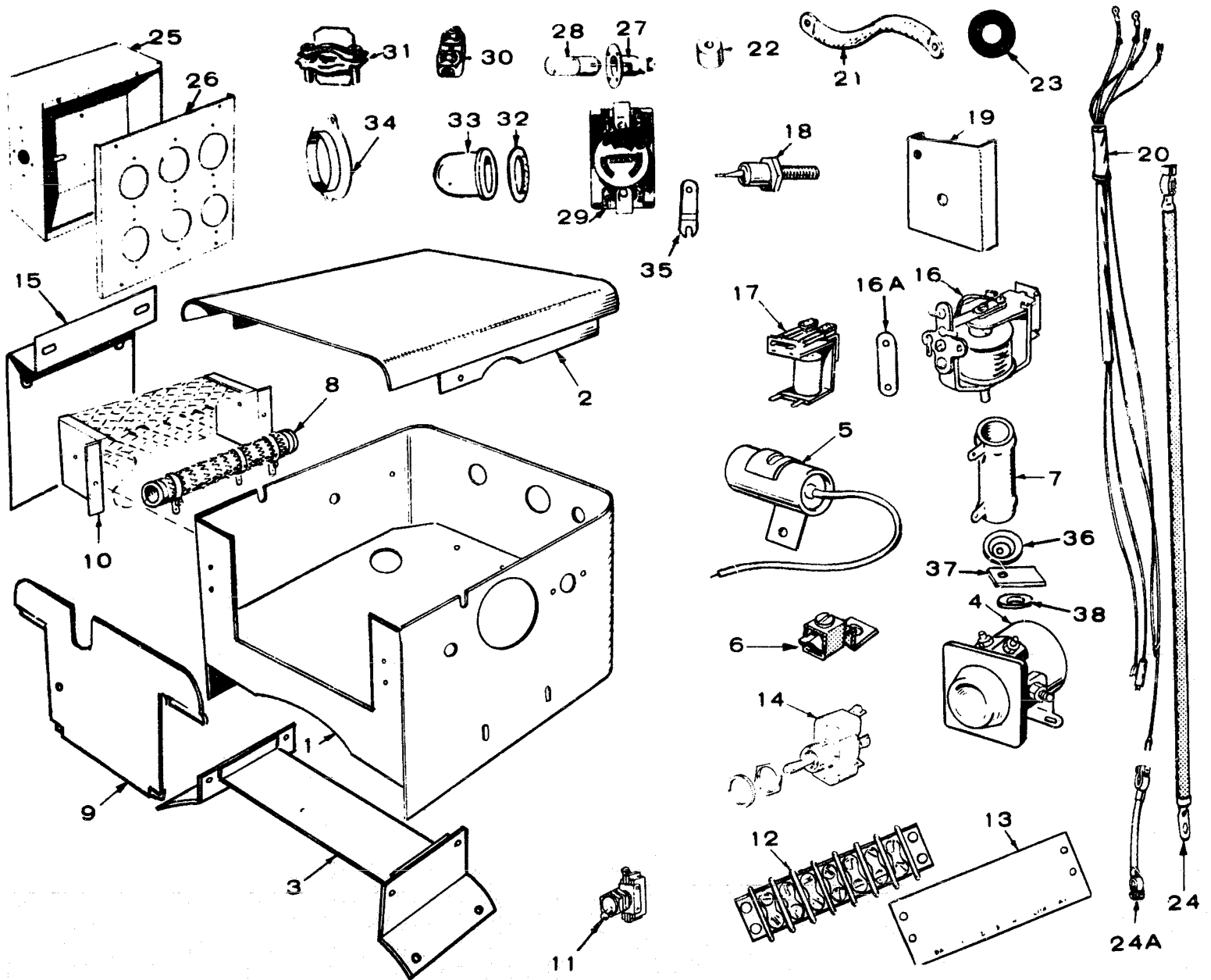


REF. NO.	PART NO.	QTY. USED	PART DESCRIPTION
1	ARMATURE ASSEMBLY (Includes Bearing and Blower)		
	201-1427	1	50 Hertz (120/240 Volts)
	201-1335	1	60 Hertz (120/240 Volts)
	201-1336	1	60 Hertz (120/208 Volts)
2	205-0053	1	Blower, Generator
3	515-0006	1	Key - Blower to Crankshaft
4	510-0047	1	Bearing, Armature
5	232-0596	1	Clip, Bearing Stop
6	520-0595	1	Stud, Armature Through
7	210-0385	1	Frame Only, Generator (Machined and Drilled, Less Coils and Pole Shoe)
8	221-0143	2	Shoe, Field Pole
9	COIL ASSEMBLY, FIELD (Set of 2 Coils)		
	222-1645	1	Key 1 (60 Hertz)
	222-1646	1	Key 1 (50 Hertz)
	222-1641	1	Key 2 (120/208)
	222-1646	1	Key 2 (50 Hertz)
	222-1641	1	Key 2 (60 Hertz)
10	RIG ASSEMBLY, BRUSH		
	212-0307	1	120/240 Volt, 1 Phase, 120 Volt, 1 Phase and 120/208 Volt, 3 Phase (All except inside of smaller ring)
	212-0332	1	240 Volt, 3 Phase (All except inside of smaller ring)
11	231-0124	1	Adapter, Generator to Engine
12	232-1256	1	Scroll, Air Baffle
13	214-0061	4	Brush, Commutator
14	BRUSH, COLLECTOR RING		
	214-0086	6	120/240 Volt, 1 Phase, 120 Volt, 1 Phase and 120/208 Volt, 3 Phase (All except inside of smaller ring)
	214-0086	4	240 Volt, 3 Phase (All except inside of smaller ring)
	214-0087	2	Inside Smaller Ring
16	SPRING, BRUSH		
	212-1105	12	120/240 Volt, 1 Phase, 120 Volt, 1 Phase and 120/208 Volt, 3 Phase
	212-1105	10	240 Volt, 3 Phase
17	312-0027	1	Condenser (.5 Mfd), DC
18	312-0058	3	Condenser (.1 Mfd), AC
19	211-0114	1	Cover, End Bell
21	234-0005	1	Band, End Bell
22	211-0098	1	Bell, End
23	212-1214	4	Clamp, Brush Rig
24	520-0498	2	Stud, Generator Through (5/16 x 15 11/16" Lg)

REF. NO.	PART NO.	QTY. USED	PART DESCRIPTION
25	800-0003	4	Screw, Cap - Hex Head - Brush Rig Clamp - (1/4-20 x 1/2")
26	516-0103	2	Pin (1/8 x 1/2"), Roll
27	232-1798	1	Support, Generator
29	203-0146	1	Commutator
30	COLLECTOR RING		
	204-0092	1	120/240 Volt, 1 Phase, 120 Volt, 1 Phase and 120/208 Volt, 3 Phase
	204-0010	1	240 Volt, 3 Phase
31	WASHER, FLAT		
	526-0032	1	Armature through Stud (24/64 ID x 7/8 OD x 1/16" Thk)
32	526-0030	2	Mounting Support to Generator (13/32 ID x 7/8 OD x 1/8" Thk)
	WASHER, LOCK-SPRING		
33	850-0055	1	Armature through Stud (7/16")
34	850-0030	2	Generator Band Mounting (#10)
35	850-0030	2	End Bell Cover Mounting (#10)
36	850-0030	4	Baffle Plate Mounting (#10)
37	850-0045	2	Generator through Stud (5/16")
38	850-0050	2	Mounting Support to Generator (3/8")
39	850-0050	4	Adapter Mounting (3/8")
	NUT, HEX		
40	862-0004	1	Armature through Stud (7/16-14)
41	870-0053	2	Generator Band Mounting (10-32)
42	862-0015	2	Generator through Stud (5/16-18)
	SCREW, CAP-HEX HEAD		
43	800-0032	12	Pole Shoe Mounting (5/16-18 x 1-3/4")
44	800-0050	2	Mounting Support to Generator (3/8-16 x 1")
45	800-0050	4	Adapter Mounting (3/8-16 x 1")
	SCREW, ROUND HEAD		
46	813-0104	2	Generator Band Mounting (10-32 x 7/8")
47	813-0098	2	End Bell Cover Mounting (10-32 x 3/8")
48	813-0098	4	Baffle Plate Mounting (10-32 x 3/8")
49	515-0122	1	Key, Blower Wheel to Armature Shaft
50	518-0014	2	Ring, Retaining - Blower Wheel



CONTROL



CONTROL

REF. NO.	PART NO.	QTY. USED	PART DESCRIPTION	REF. NO.	PART NO.	QTY. USED	PART DESCRIPTION
1	301-2705	1	Box Control - Key 2	17	307-1978	2	Relay Start-Disconnect - Key 2
2	301-1244	1	Cover Control Box - Key 2	18	305-0673	1	Rectifier - Key 2
3	301-2593	1	Bracket Control Box Mounting - Key 2	19	305-0254	1	Bracket Rectifier Heat Sink - Key 2
4	307-0845	1	Solenoid Start - Key 2	20	338-0370	1	Harness Wiring - Key 2
5	312-0057	1	Condenser (1 Mfd.) Start Solenoid - Key 2	21	STRAP GROUND - KEY 2		
6	332-0142	1	Terminal Ground (17/64" Stud Hole)		337-0036	1	4-15/16" Lg.
6A	332-0952	1	Terminal Ground (21/64" Stud Hole)		337-0052	1	5-7/16" Lg.
6B	332-0517	1	Terminal Ground (13/64" Stud Hole)	22	402-0078	4	Cushion Mounting - Key 2
7	RESISTOR, FIXED - KEY 2			23	GROMMET - KEY 2		
	304-0060	1	1.72-Ohm. 25 Watt		508-0001	2	For 1-1/16" Hole
	304-0251	1	30-Ohm. 5 Watt		508-0002	3	For 1/2" Hole
8	304-0635	1	Resistor (Mounts Outside Control Box) - Key 2		508-0004	1	For 1-3/8" Hole (1-3/4" OD)
9	301-2597	1	Plate Control Box End - Key 2		508-0009	1	For 1-3/8" Hole (1-9/16" OD)
10	301-2528	1	Box Resistor Mounting - Key 2	24	416-0077	2	Cable (28"). Battery - Key 2
11	308-0002	1	Switch (For Hand Cranking Only)	24A	416-0004	1	Cable (6-3/4"). Battery Jumper - Key 2
12	BLOCK, TERMINAL-KEY 2			25	301-2112	1	Box Receptacle - Key 1
	332-0706	1	Remote Control - 8 Place	26	301-3659	1	Panel Box - Key 1
	332-0609	1	Optional - 2 Place	27	322-0021	1	Receptacle Light - Key 1
	332-0611	1	Optional - 3 Place	28	322-0011	1	Lamp - Key 1
13	STRIP, MARKER - KEY 2			29	RECEPTACLE, TWISTLOCK-KEY 1		
	332-1126	1	Remote Control - 8 Place		323-0855	2	20 Amp., 250 Volt
	332-0610	1	Optional - 2 Place		323-0860	2	20 Amp., 120/208 Volt
	332-0612	1	Optional - 3 Place		323-0866	2	20 Amp., 125 Volt
14	308-0154	1	Switch, Start-Stop - Key 2	30	323-0383	2	Receptacle Duplex - Key 1
15	301-2683	1	Bracket Control Box Mounting - Key 1	31	331-0027	1	Connector - Key 1
16	307-0253	1	Relay Stop - Key 2	32	149-0234	1	Guard - Key 1
16A	332-0592	1	Jumper, Stop Relay	33	149-0156	1	Gasket - Key 1
				34	301-1902	1	Clamp - Key 1
				35	332-1695	2	Tab. Terminal Connector
				36	304-0014	2	Washer, Centering - Resistor - Key 2
				37	304-0292	1	Insulator, Resistor - Key 2
				38	508-0015	2	Washer, Fiber - Insulator - Key 2

SERVICE KIT AND MISCELLANEOUS

REF NO.	PART NO.	QTY USED	PART DESCRIPTION	REF NO.	PART NO.	QTY USED	PART DESCRIPTION
	98-1100	1	Decal Kit		509-0041	1	*Seal, Bearing
	168-0103	1	Kit, Gasket - Engine Complete (Includes Parts Marked *)		509-0008	1	*Seal, Oil
	101-0040	1	*Gasket, Rear Bearing Plate		509-0040	1	*Seal, Oil
	101-0041	1	*Gasket, Rear Bearing Plate		509-0030	2	*Seal, O-Ring
	102-0156	1	*Gasket, Oil Base		110-3136	2	*Gasket, Valve Guide
	103-0011	1	*Gasket, Gearcase		168-0095	1	Kit, Gasket - Carbon Removal (Includes Parts Marked +)
	110-0667	2	*Gasket, Valve Box		110-0667	2	+Gasket, Oil Fill Tube
	110-0892	2	*Gasket, Cylinder Head		110-0892	2	+Gasket, Cylinder Head
	120-0161	1	*Gasket Kit		154-0013	2	+Gasket, Intake and Exhaust Manifold
	123-0191	1	*Gasket, Oil Fill Cap		154-0360	2	+Gasket, Exhaust
	140-0584	1	*Gasket, Air Cleaner		154-0973	2	+Gasket, Exhaust Manifold Engine Overhaul Kit
	140-0585	1	*Gasket, Air Horn		522-0225	1	Spec A Only
	140-0921	1	*Gasket, Air Horn		522-0239	1	Begin Spec B
	141-0078	2	*Gasket, Carburetor Flange				Touch-Up Paint (Pressurized Can)
	141-0281	1	*Gasket, Carburetor Flange		525-0137	1	Metallic Green (13 oz.)
	149-0003	2	*Gasket, Fuel Pump		525-0305	1	Non-Metallic Green (13 oz.)
	122-0375	1	*Gasket, Oil Filter Adapter				
	149-0149	1	*Gasket, Filter Bowl				
	150-0425	1	*Gasket, Vacuum Booster				
	154-0013	2	*Gasket, Intake and Exhaust Manifold				
	160-1040	1	*Gasket, Breaker Box				
	154-0360	2	*Gasket, Exhaust				
	154-0973	2	*Gasket, Exhaust Manifold				
	160-0043	2	*Gasket, Breaker Box				
	509-0117	1	*Seal, O-Ring				
	160-0150	1	*Gasket, Breaker Box Cover				

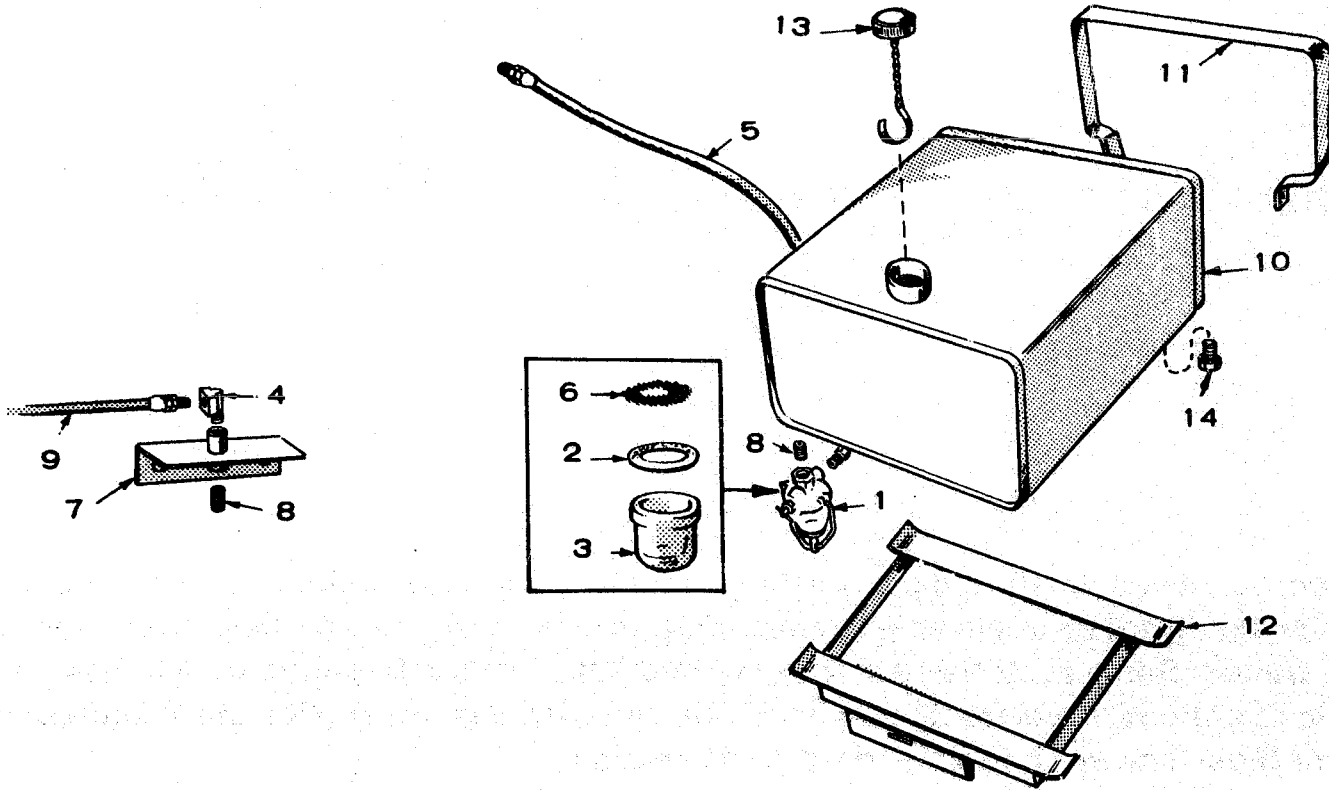
+ - Parts Included in 168-0095 Gasket Kit.
* - Parts Included in 168-0103 Gasket Kit.

NOTE: For other kits, refer to the group for the part in question.

OPTIONAL EQUIPMENT PARTS SECTION

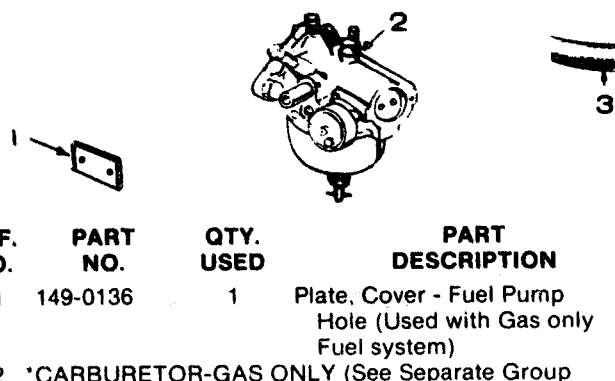
This section contains illustrated parts listing of factory installed options for the generator sets. Options may not be applicable to all models; for field conversions additional parts are usually required. Some parts listed in the standard parts section beginning Spec B are also applicable as optional parts for Spec A. Optional parts listed in this section are in addition or in place of those shown in the standard parts section.

FUEL TANK AND FILTER OPTIONAL

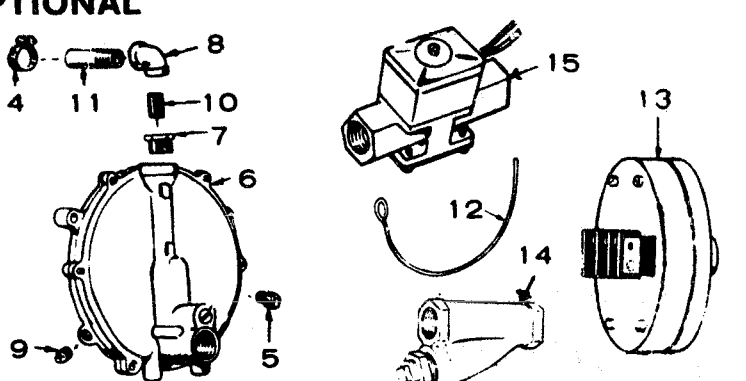


REF. NO.	PART NO.	QTY. USED	PART DESCRIPTION
1	149-0079	1	Filter, Fuel - Gasoline Sets
2	149-0149	1	Gasket, Filter Bowl
3	149-0150	1	Bowl, Fuel Filter
4	502-0020	1	Elbow, Fuel Filter
5	501-0015	1	Line, Fuel (16" long)
6	149-0202	1	Screen, Fuel Filter
7	149-0616	1	Bracket, Fuel Filter
8	502-0046	1	Nipple, Fuel Filter
9	501-0005	1	Line, Flexible - Filter to Pump
10	159-0546	1	Tank, Mounted Fuel
11	159-0537	2	Strap, Mounted Fuel Tank
12	159-0882	1	Bracket, Mounted Fuel Tank
13	159-0020	1	Cap, Mounted Fuel Tank
14	505-0274	2	Plug, Tank Drain

FUEL SYSTEM (Gaseous Fuels) OPTIONAL



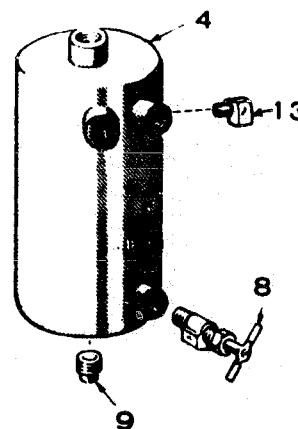
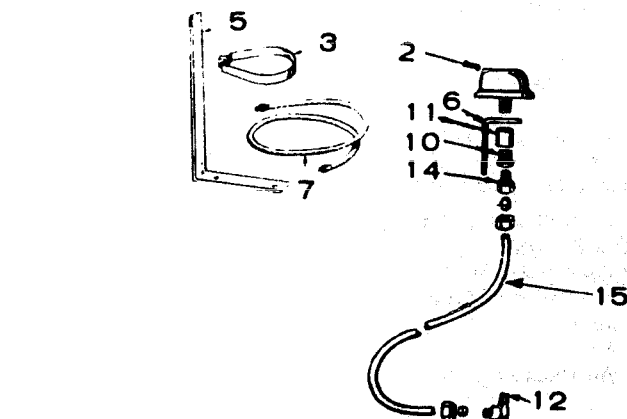
REF. NO.	PART NO.	QTY. USED	PART DESCRIPTION
1	149-0136	1	Plate, Cover - Fuel Pump Hole (Used with Gas only Fuel system)
2	*CARBURETOR-GAS ONLY (See Separate Group for Components)		
	143-0340	1	£Spec A Only
	141-0839	1	Spec A Replacement Kit (Includes a 141-0726 Carburetor)
	141-0726	1	Begin Spec B
	*CARBURETOR-GAS-GASOLINE (See Separate Group for Components)		
	143-0338	1	£Manual Choke - Spec A Only
	141-0856	1	£Manual Choke - Spec A Replacement Kit (Includes a 141-0721 Carburetor)
	141-0721	1	Manual Choke - Begin Spec B
	143-0339	1	£Electric Choke - Spec A Only
	141-0857	1	Electric Choke - Spec A Replacement Kit (Includes a 141-0722 Carburetor)
	141-0722	1	Electric Choke - Begin Spec B
3	503-0315	1	Hose, Regulator to Carburetor (1/2" ID x 2 Ft. Long)
4	503-0032	2	Clamp, Hose
5	148-0107	1	Vent



REF. NO.	PART NO.	QTY. USED	PART DESCRIPTION
6	148-0311	1	Regulator, Garretson
7	505-0017	1	Bushing, Reducer (3/8" NPT to 1/4" NPT)
8	505-0038	1	Elbow, Pipe (1/4" NPT)
9	505-0057	1	Plug, Pipe (1/8" NPT)
10	505-0099	1	Nipple, Pipe (1/4" NPT x 7/8")
11	505-0302	1	Nipple, Half, Pipe (1/4" NPT x 1-1/2")
12	143-0231	1	Wire, Choke Lock (Used on Gas-Gasoline Fuel Systems)
13	148-0367	1	Switch, Vacuum Regulator
14	149-0558	1	Strainer, Gaseous Fuel
15	307-0312	1	Valve, Solenoid-Gaseous Fuel

£ - The 143-0340 Carburetor no longer available.
For Complete Replacement order the applicable kit.
* - Mounting Gasket Supplied with Carburetor.

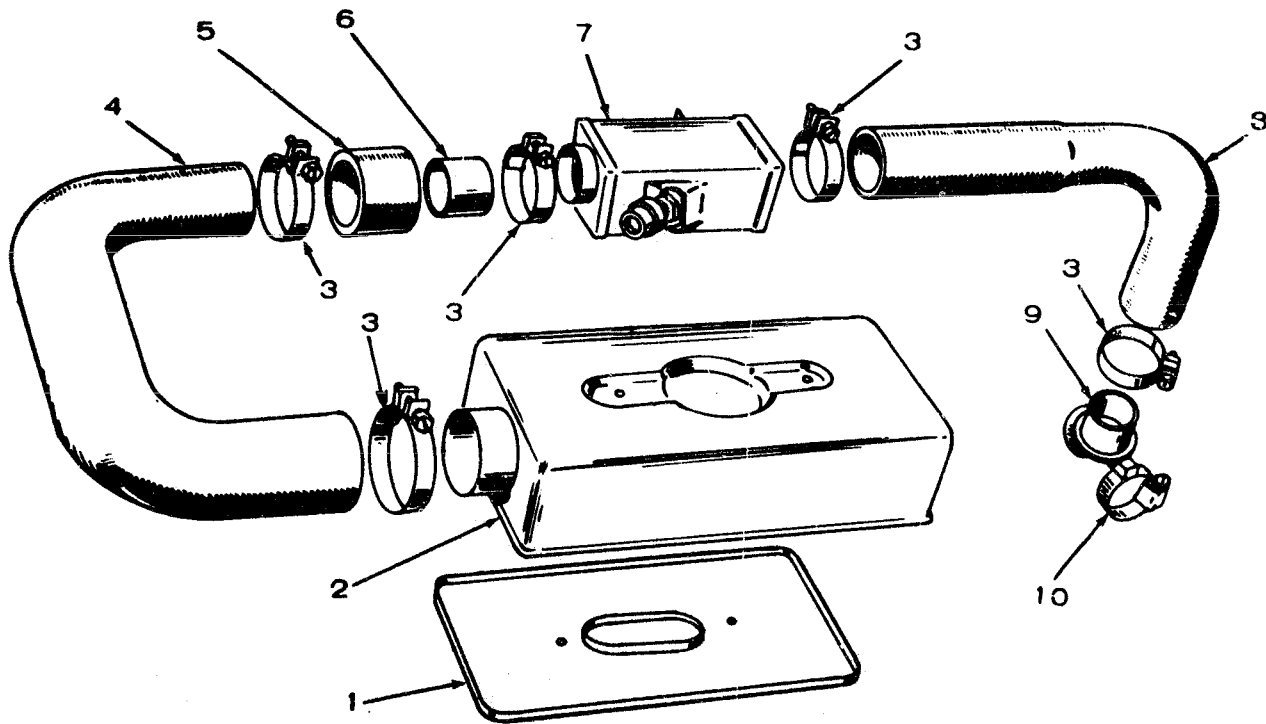
RESERVOIR (DAY) TANK OPTIONAL



REF. NO.	PART NO.	QTY. USED	PART DESCRIPTION
TANK KIT, RESERVOIR (DAY)			
	159-0591	1	1 Quart
	159-0942	1	2 Quart
2	159-0041	1	Cap, Vent
BAND, TANK MOUNTING			
	159-0556	1	1 Quart
	159-0936	1	2 Quart
TANK, RESERVOIR			
	159-0294	1	1 Quart
	159-0746	1	2 Quart
5	159-0612	1	Bracket, Reservoir Tank Mounting
6	415-0055	1	Bracket, Vent Cap

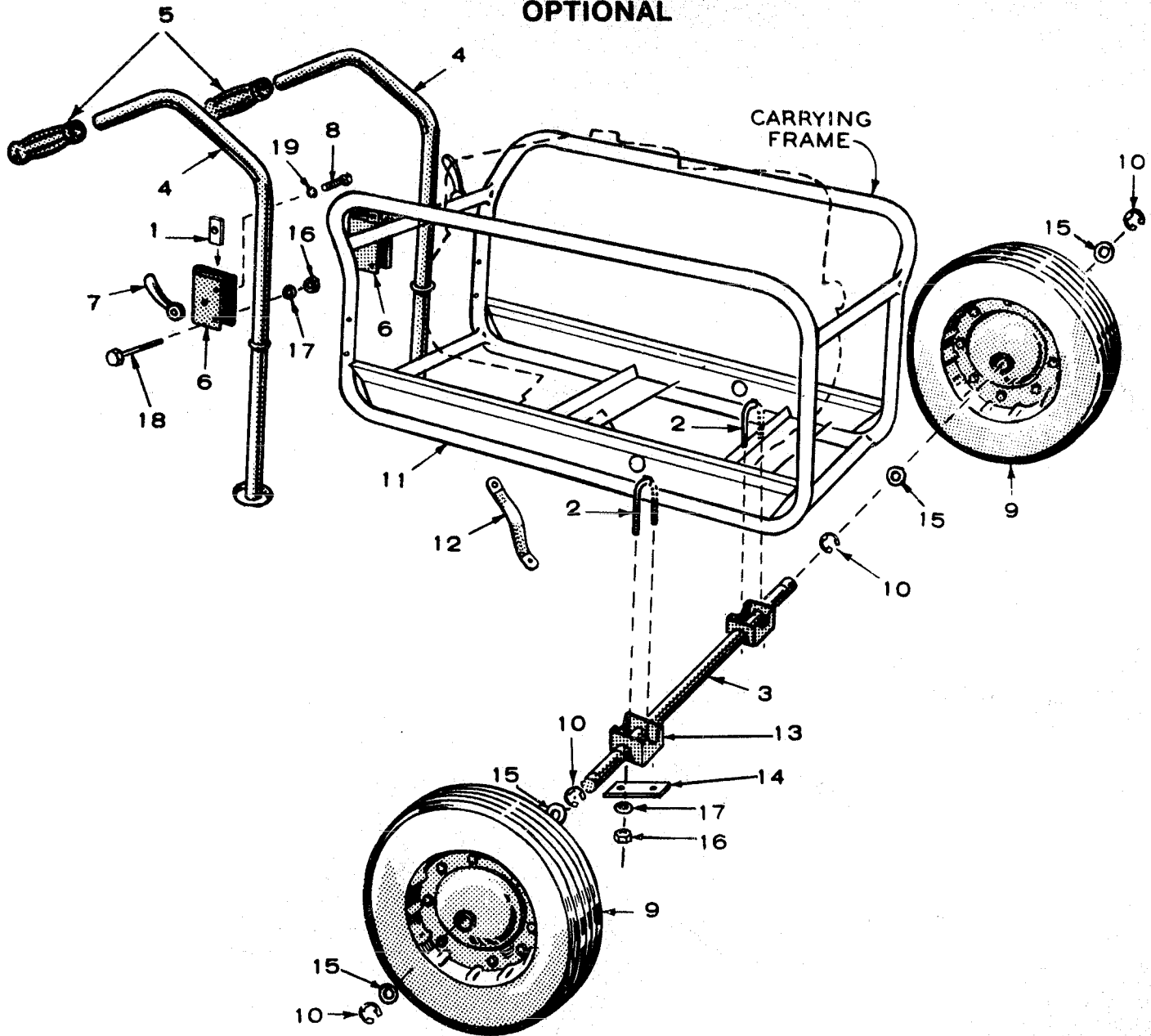
REF. NO.	PART NO.	QTY. USED	PART DESCRIPTION
7 LINE, FUEL, FLEXIBLE			
	501-0005	1	18" Long
	501-0007	1	24" Long
8	504-0086	1	Valve, Shut-Off
9	505-0057	1	Plug, Tank Drain
10	505-0016	1	Bushing (3/8 x 1/8"), Reducer
11	505-0028	1	Coupling
12	502-0020	1	Elbow (90°), Street
13	502-0024	1	Elbow (90°)
14	502-0116	1	Connector
15	159-0345	1	Tubing (5/16" x 12'), Copper

AIR CLEANER OPTIONAL



REF. NO.	PART NO.	QTY. USED	PART DESCRIPTION
1	140-0791	1	Pan. Air Cleaner
2	140-0790	1	Cover. Air Cleaner
3	503-0004	5	Clamp. Hose
4	503-0657	1	Hose. Air Shutter to Air Cleaner
5	145-0448	1	Tube. Hose Reinforcement
6	503-0330	1	Hose. Air Shutter Adapter (2" ID x 2" Lg.)
7	140-0788	1	Shutter Assembly. Air
8	503-0689	1	Hose. Air Intake to Shutter Assembly
9	145-0449	1	Intake. Air
10	503-0189	1	Clamp. Air Intake Mounting

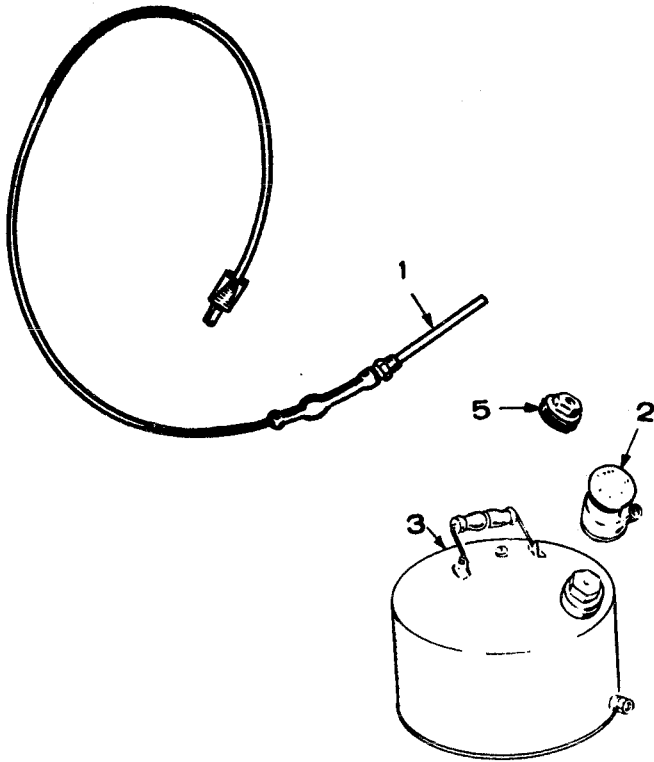
CARRYING FRAME AND DOLLY OPTIONAL



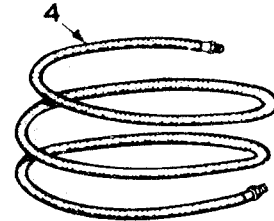
REF. NO.	PART NO.	QTY. USED	PART DESCRIPTION	REF. NO.	PART NO.	QTY. USED	PART DESCRIPTION
	410-0235	1	Dolly Assembly (Includes Parts Marked *)	14	410-0284	2	*Plate, Dolly Support
1	410-0238	2	*Lock, Handle	15	526-0081	4	*Washer, Flat - Wheel Mtg. (1-1/64 ID x 1-5/8 OD x 1/8" Thk)
2	410-0148	2	*Bolt, "U"	16	NUT, HEX 860-0017	4	*Axle Mounting (3/8-16)
3	410-0233	1	*Axle, Dolly		862-0015	4	*Channel Mounting (5/16-18)
4	410-0147	2	*Handle, Dolly	17	WASHER, LOCK 850-0050	4	*Axle Mounting (3/8)
5	403-0205	2	*Grip, Handle		850-0045	4	*Channel Mounting (5/16)
6	410-0179	2	*Channels, "U"	18	800-0032	4	*Screw, Cap - Hex Head - Channel Mounting (5/16-18 x 1-3/4")
7	406-0062	2	*Nut, Handle	19	854-0020	2	*Washer, Shakeproof - Channel Tension Nut - IT (3/8")
8	800-0052	2	*Screw, Cap - Hex Head (3/8-16 x 1-1/2")				
9	410-0236	2	*Wheel and Tire Assembly (16 x 4.00)				
10	518-0130	4	*Ririg, "E" Retaining - Wheel to Axle				
11	403-0406	1	Frame, Carrying				
12	337-0056	1	Strap, Ground				
13	410-0283	2	*Support, Dolly Axle				

* - Parts included in 410-0235 Dolly Assembly.

MISCELLANEOUS OPTIONAL PARTS



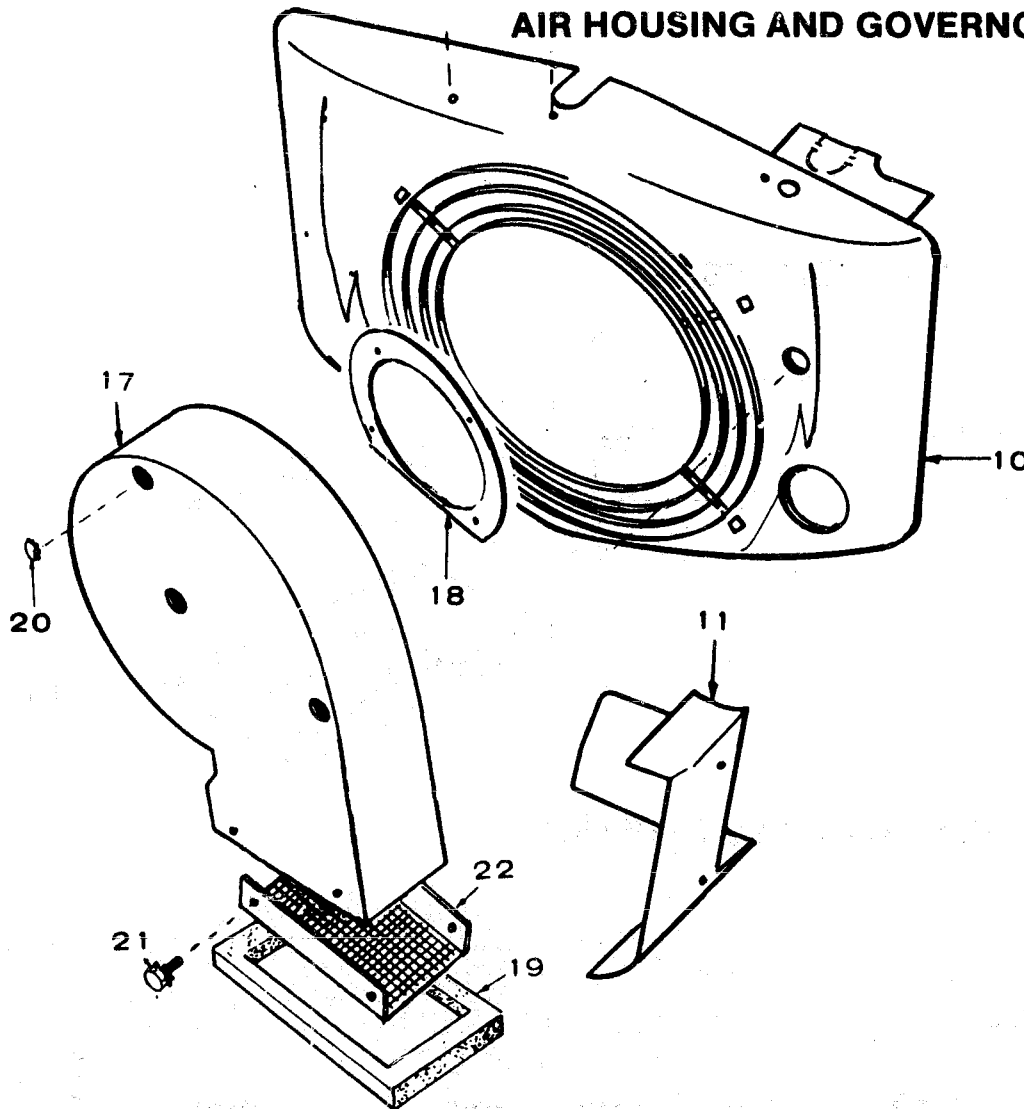
REF. NO.	PART NO.	QTY. USED	PART DESCRIPTION
1	102-0558	1	Heater, Oil Base
2	415-0124	1	Cap, Fuel Tank Rain
3	415-0126	1	Tank, Fuel (5 gal.)
4	LINE, FUEL - FLEXIBLE		
	501-0027	1	48" long
	501-0007	1	24" long
5	415-0313	1	Cap, Fuel Tank



SPECIAL PARTS SECTION FOR MOBILE HOME GENERATING SETS

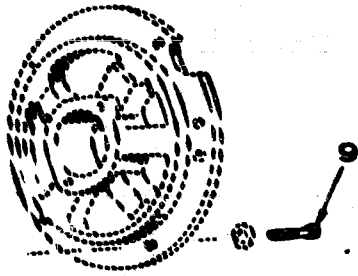
This section contains illustrated parts listing of factory installed equipment used on Mobile Home generating sets. The parts listed in this section are in addition or in place of those shown in the standard parts section. Use Key 2 when referring to the standard parts section.

AIR HOUSING AND GOVERNOR



REF NO.	PART NO.	QTY USED	PART DESCRIPTION	REF NO.	PART NO.	QTY USED	PART DESCRIPTION
10	134-1572	1	Housing, Blower (Must plug unused holes)	19	134-2112	1	Seal, Blower Scroll
11	134-1591	1	Housing, Cylinder Air - Right	20	517-0021	2	Button, Dot
17	134-2115	1	Spec A through C		517-0035	1	For 7/8" Hole
	134-3033	1	Begin Spec D (Includes Guard)	21	815-0421	4	For 1-1/16" Hole
18	134-0761	1	Spacer, Scroll Mounting	22	134-2956	1	Screw, Tapping - Hex Head with External Tooth Lock-washer (10-16 x 1/2")
							Guard, Scroll Outlet

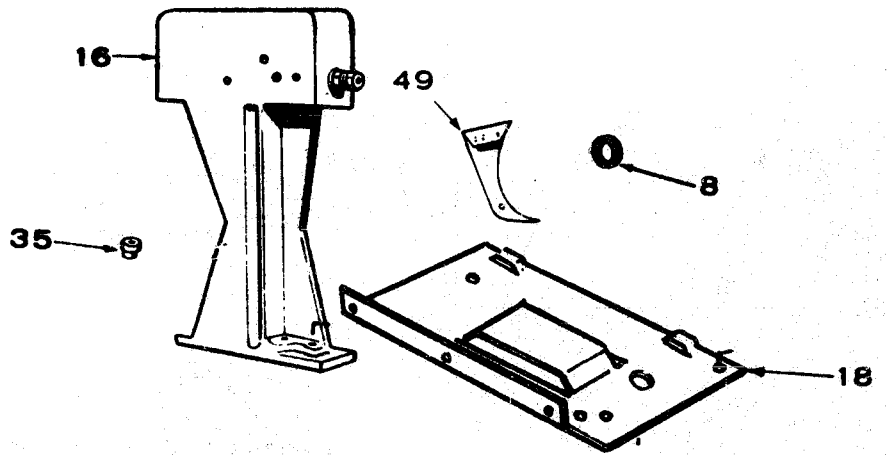
CYLINDER BLOCK



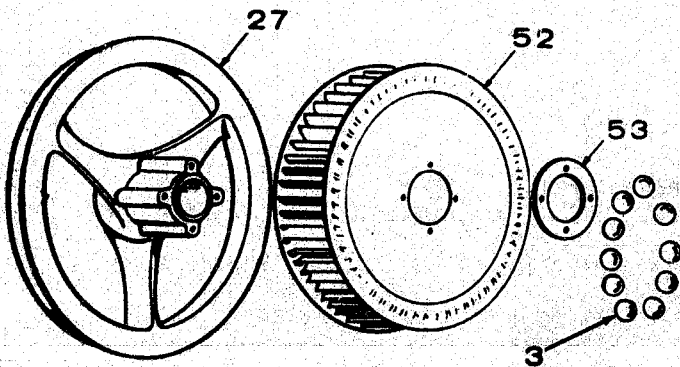
REF. NO.	PART NO.	QTY. USED	PART DESCRIPTION
9	800-0512	5	Screw, Cap - Hex Head - Rear Bearing Plate Mounting (Special)

IGNITION SYSTEM

REF. NO.	PART NO.	QTY. USED	PART DESCRIPTION
8	160-1040	1	Gasket, Breaker Box
16	160-1135	1	Box Assembly, Breaker
18	166-0383	1	Bracket, Coil Mounting
35	160-1041	1	Bushing, Breaker Box
49	166-0519	1	Bracket, Timing



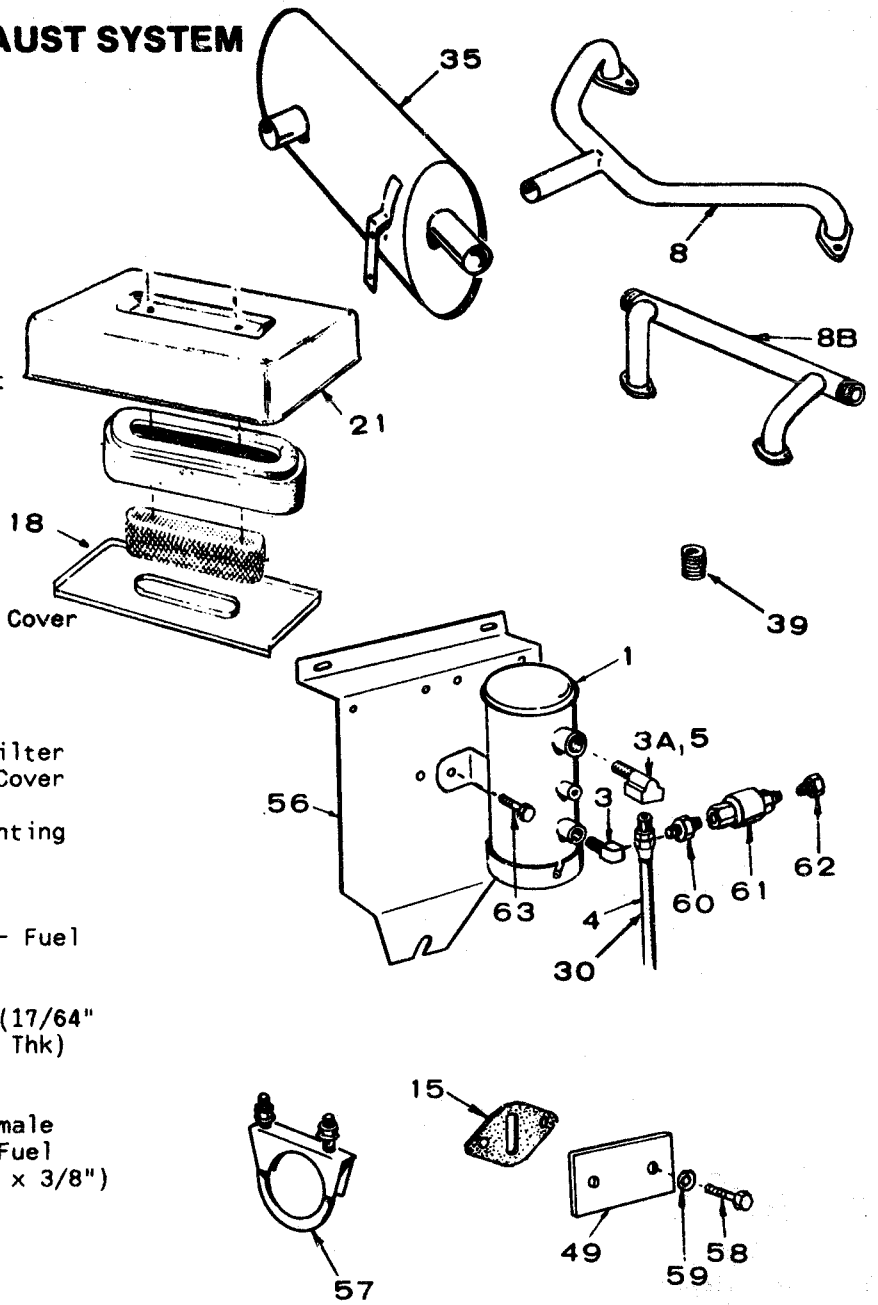
CRANKSHAFT AND FLYWHEEL



REF. NO.	PART NO.	QTY. USED	PART DESCRIPTION
3	510-0015	10	Ball, Fly - Governor
27	104-0499	1	Flywheel
52	134-0565	1	Wheel, Blower
53	134-0911	1	Plate, Blower Wheel

FUEL SYSTEM, EXHAUST SYSTEM

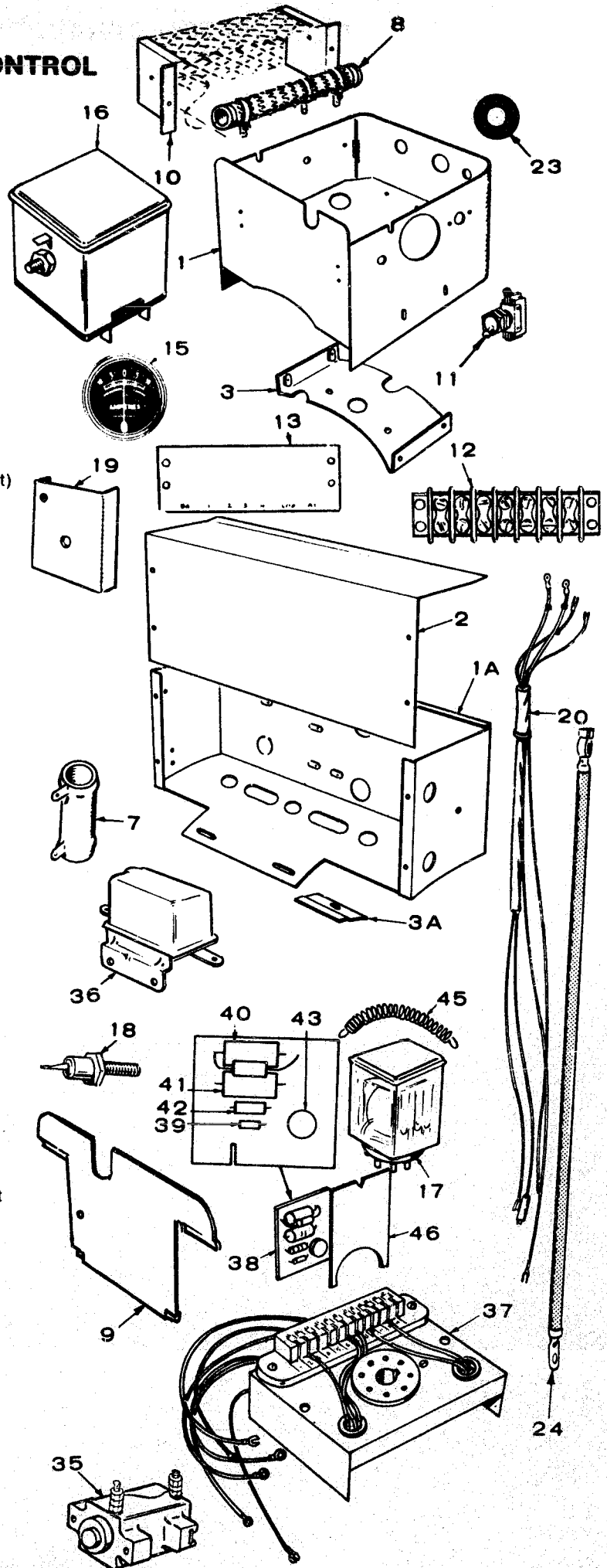
REF NO.	PART NO.	QTY USED	PART DESCRIPTION
1	149-1828	1	Pump, Fuel (Electric)
3	502-0020	1	Elbow, Fuel Pump Inlet
3A	502-0020	1	Elbow, Fuel Pump Outlet
	502-0020	1	Spec A and B
	502-0002	1	Begin Spec C
4			Line, Fuel - Flexible
	501-0007	1	Spec A and B
	501-0131	1	Begin Spec C
5	502-0002	1	Elbow, Filter Inlet
8	154-1212	1	Manifold, Exhaust
8B	154-0998	1	Manifold, Exhaust
15	149-0003	1	Gasket, Fuel Pump Hole Cover
18	140-0791	1	Pan, Air Cleaner
21	140-0790	1	Cover, Air Cleaner
30	501-0005	1	Line, Fuel - Flexible
35	155-1016	1	Muffler, Exhaust
39	505-0098	1	Nipple, Fuel Pump to Filter
49	149-0136	1	Plate, Fuel Pump Hole Cover (Cylinder Block)
56			Bracket, Fuel Pump Mounting
	160-1089	1	Spec A and B
	160-1109	1	Begin Spec C
57	155-1015	1	Clamp, Muffler
58	800-0004	2	Screw, Cap - Hex Head - Fuel Pump Hole Cover Plate (1/4-20 x 5/8")
59	526-0063	2	Washer, Flat - Copper (17/64" ID x 7/16" OD x 1/32" Thk)
60	502-0082	1	Nipple, Hex
61	307-1279	1	Valve, Fuel Solenoid
62	502-0003	1	Connector, Inverted Female
63	821-0009	2	Screw, Self Locking - Fuel Pump Mounting (1/4-20 x 3/8")



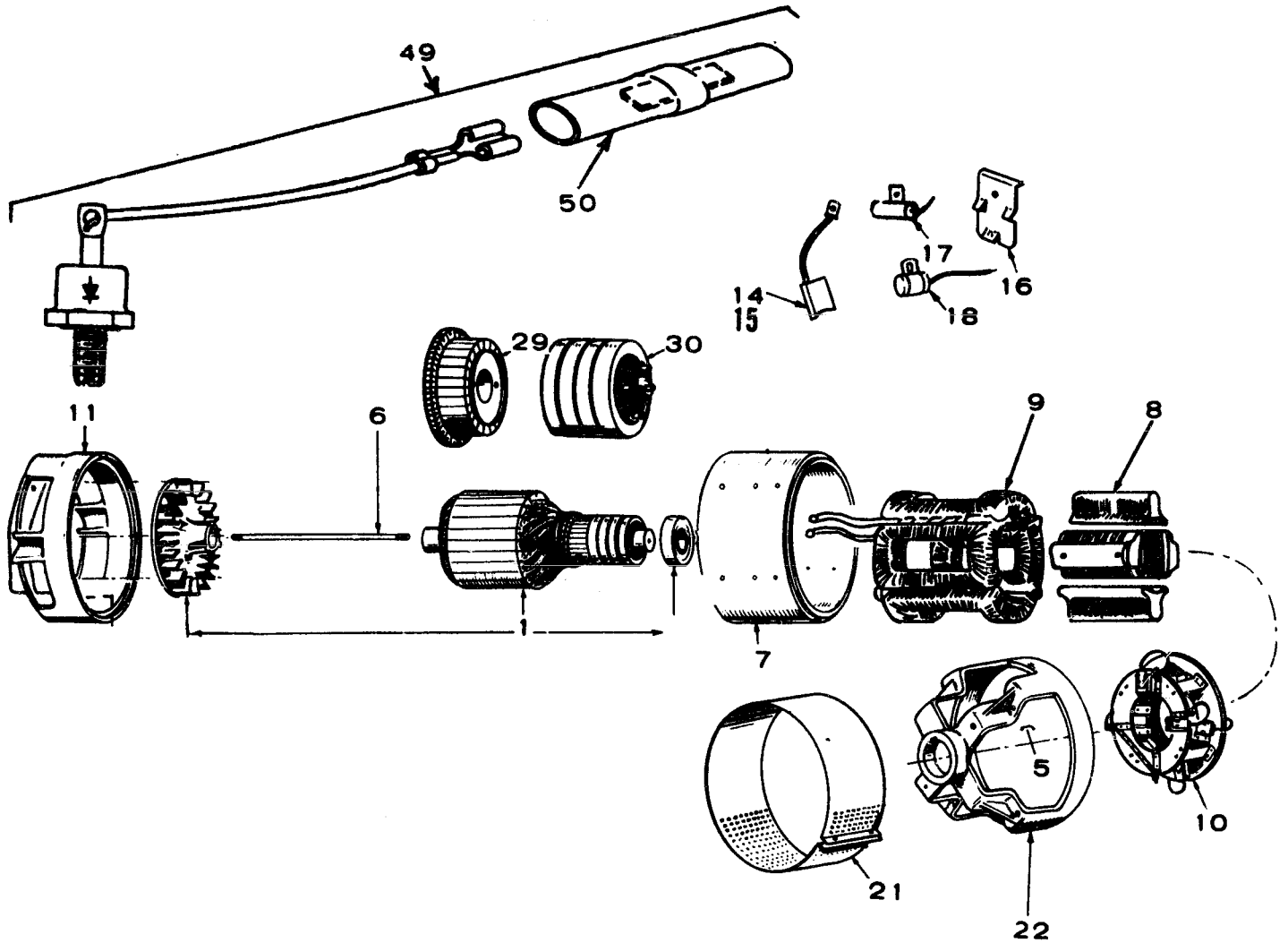
CONTROL

REF. NO.	PART NO.	QTY. USED	PART DESCRIPTION
1	301-2525	1	Box, Control - Spec A and B
1A	301-3233	1	Box, Control - Begin Spec C
2	COVER, CONTROL BOX		
	301-1244	1	Spec A and B
	301-3102	1	Begin Spec C
3	301-1198	1	Bracket, Control Box Mounting - Spec A and B
3A	301-3227	1	Bracket, Control Box Mounting - Begin Spec C
7	RESISTOR, FIXED		
	304-0060	1	1.72-Ohm, 25 Watt
	304-0251	1	30-Ohm, 5 Watt
	304-0217	1	1-Ohm, 10 Watt (Spec A and B)
8	304-0483	1	Resistor, Tapped (6-Ohm, 225 Watt)
9	301-2597	1	Plate, Control Box End - Spec A and B
10	BOX, RESISTOR MOUNTING		
	301-2528	1	Spec A and B
	301-3235	1	Begin Spec C
11	308-0002	1	Switch, High Air Temperature - Begin Spec C
12	BLOCK, TERMINAL - REMOTE CONTROL		
	332-0745	1	Spec A and B
	332-0699	1	Begin Spec C
13	STRIP, MARKER		
	332-0922	1	Spec A and B
	332-1289	1	Begin Spec C
15	302-1360	1	Ammeter, Charge (10-0-10) - (Includes Hardware) Spec A and B
16	RELAY, STOP		
	307-0253	1	Spec A and B
	307-1052	1	Begin Spec C
17	RELAY, START DISCONNECT		
	307-0642	1	Spec A and B
	307-1070	1	Begin Spec C
18	305-0235	1	Rectifier - Spec A and B
19	305-0254	1	Bracket, Rectifier Heat Sink - Spec A and B
20	HARNESS, WIRING		
	338-0492	1	Spec A and B
	338-0511	1	Begin Spec C - Plants Without Fuel Solenoid Valve
	338-0747	1	Begin Spec C - Plants With Fuel Solenoid Valve
23	508-0001	4	Grommet - Begin Spec C
24	CABLE, BATTERY		
	416-0036	1	42" Long
	416-0037	1	48" Long
35	320-0104	1	Switch, Low Oil Pressure Lockout - Spec A and B
36	305-0383	1	Relay, Charge Regulator
37	323-0807	1	Socket and Chassis Assembly, Start Disconnect (Includes Leads) - Begin Spec C
38	300-0734	1	Amplifier Assembly, Start-Disconnect (Includes Parts Marked *) - Begin Spec C
39	359-0028	1	*Diode, Zener
40	350-0979	1	*Resistor (470-Ohm, 2 Watt)
41	350-0985	1	*Resistor (820-Ohm, 2 Watt)
42	350-0397	1	*Resistor (2700-Ohm, 1/2 Watt)
43	362-0032	1	*Transistor
45	301-3306	1	Spring, Relay Hold-down - Begin Spec C
46	301-3307	1	Spacer, Relay to Amplifier - Begin Spec C

* - Included in 300-0734 Amplifier Assembly.

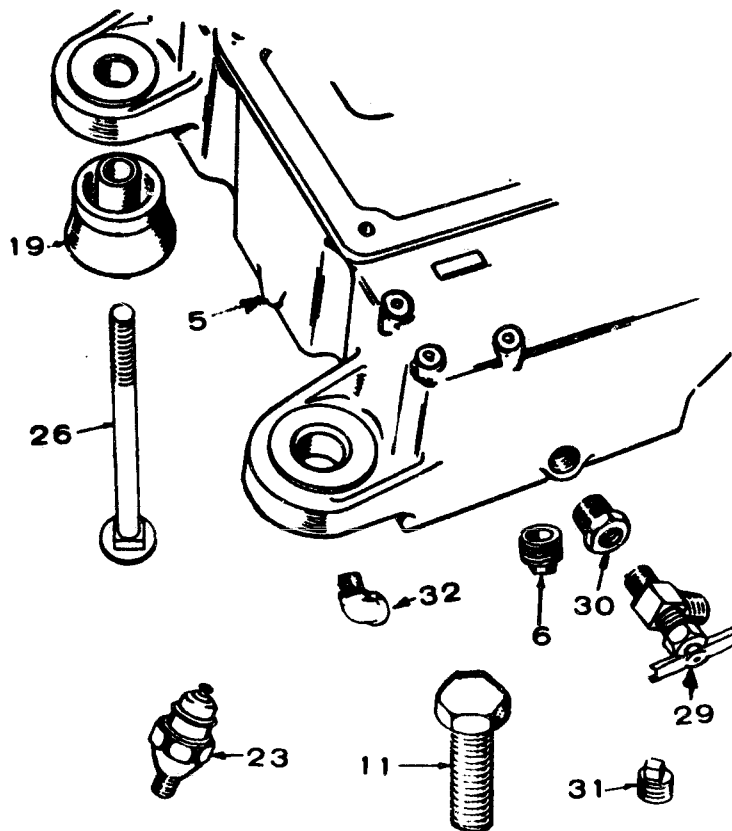


GENERATOR



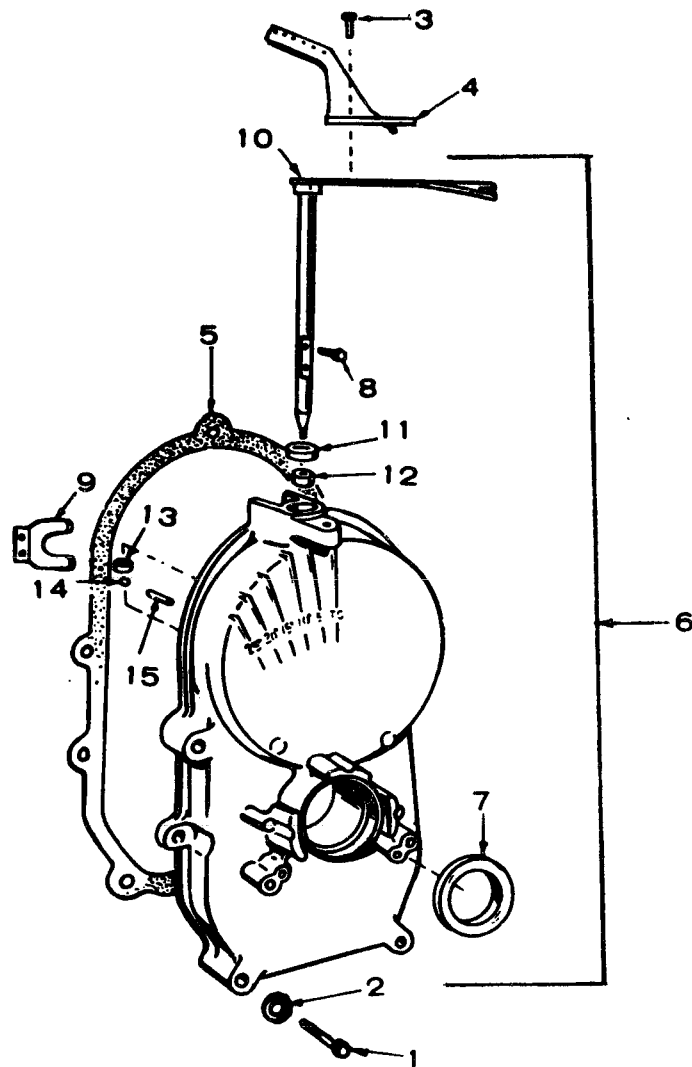
REF NO.	PART NO.	QTY USED	PART DESCRIPTION	REF NO.	PART NO.	QTY USED	PART DESCRIPTION
1			Armature Assembly (Includes Bearing and Blower)	17			Condenser (.5 Mfd) DC
	201-1313	1	60 Hertz (120 Volts)		312-0017	1	120 Volt
	201-1314	1	60 Hertz (120/240 Volts)		312-0027	1	120/240 Volt
6			Stud, Through Armature	18			Condenser (.1 Mfd) AC
	520-0407	1	120 Volt		312-0058	1	120 Volt
	520-0595	1	120/240 Volt		312-0058	2	120/240 Volt
7	210-0238	1	Frame (Machined and Drilled)	21			Band, End Bell
8	221-0090	4	Shoe, Pole - Field		234-0255	1	120 Volt
9	222-1639	1	Coil Assembly, Field (Set of 4 Coils)		234-0256	1	120/240 Volt
10			Rig Assembly, Brush	22			End Bell
	212-0293	1	120 Volt		211-0097	1	120 Volt
	212-0295	1	120/240 Volt		211-0098	1	120/240 Volt
11	231-0123	1	Adapter, Generator to Engine	29	203-0127	1	Commutator
14			Brush, Collector Ring (AC)	30			Collector Ring
	214-0056	4	120 Volt		204-0009	1	120 Volt
	214-0056	3	120/240 Volt		204-0010	1	120/240 Volt
15	214-0061	4	Brush, Commutator (DC)	49	305-0397	1	Rectifier Assembly (Include Lead and Connector)
16			Spring, Brush	50	332-0556	1	Connector, Quick-Disconnect
	212-1105	8	120 Volt				
	212-1105	7	120/240 Volt				

OIL SYSTEM



REF. NO.	PART NO.	QTY. USED	PART DESCRIPTION
5	102-0579	1	Base, Oil
6	505-0056	1	Plug, Pipe - Square Head (1/2" NPT) Used up thru Serial #496751 During Spec D
11	801-0048	1	Screw, Cap - Hex Head (Oil By- Pass) (3/8-24 x 3/4")
19	CUSHION, VIBRATION		
	402-0283	2	Engine End
	402-0284	2	Generator End
23	309-0237	1	Switch, Low Oil Pressure - Used Beginning Serial #496752, During Spec D
26	816-0206	4	Bolt, Carriage - Set Mounting (7/16-14 x 3-1/2")
29	504-0092	1	Valve, Drain - Oil - Used Beginning Serial #496752, During Spec D
30	505-0019	1	Bushing, Reducer - Oil Drain - Used Beginning Serial #496752, During Spec D
31	505-0057	1	Plug, Pipe - Square Head (1/8" NPT) - Installed in Oil Line Tee
32	505-0050	1	Elbow, Pipe - Street - Oil Drain (1/2" NPT) - Used up thru Serial #496751 During Spec D

GEARCASE

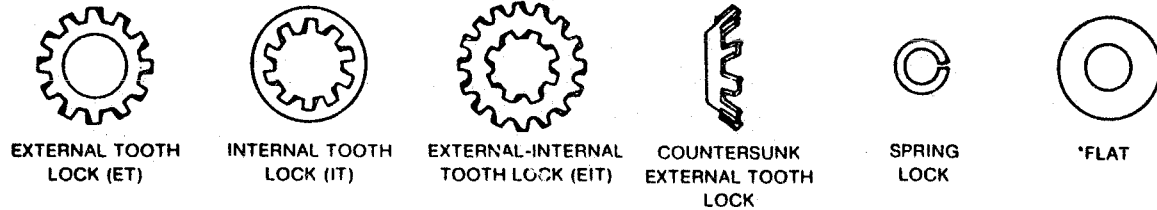


REF. NO.	PART NO.	QTY. USED	PART DESCRIPTION
1	SCREW, CAP - HEX HEAD		
	800-0032	4	5/16-18 x 1-3/4"
	800-0034	1	5/16-18 x 2-1/4"
2	526-0065	5	Washer, Flat - Copper (21/64" ID x 9/16" OD x 1/16" Thk)
3	815-0181	1	Screw, Tapping - Hex Head with External Tooth Lock- washer (#10-32 x 1/2")
4	150-1073	1	Arm, Extension
5	103-0011	1	Gasket, Gearcase
6	GEARCASE ASSEMBLY		
	103-0333	1	Spec A and B (See Standard Parts Section for Components)
	103-0386	1	Begin Spec C (Includes the following Components)
7	509-0040	1	Seal, Oil - Crankshaft
8	815-0046	2	Screw, Machine - Pan Head, Cross-Recessed (#8-32 x 3/8")
9	150-1187	1	Yoke, Governor Shaft
10	150-1260	1	Shaft and Arm, Governor
11	509-0008	1	Seal, Oil
12	510-0013	1	Bearing, Needle
13	510-0008	1	Bearing, Needle
14	510-0014	1	Ball, Bearing
15	516-0130	1	Pin, Roll

HARDWARE IDENTIFICATION

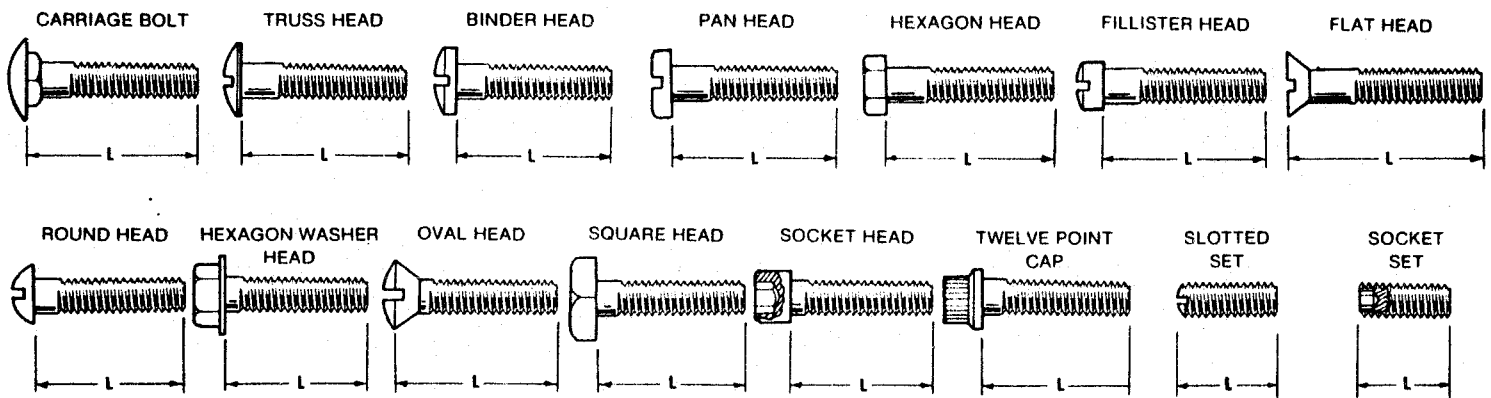
Illustrated hardware items are only for identification purposes. All hardware items listed throughout this part catalog are steel SAE grade five (5) or lower (zinc plated with clear chromate dip) unless parts description indicates differently. All dimensions are in inches.

WASHER TYPES



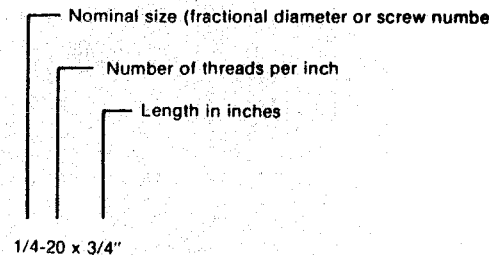
* - Flat washer dimensions given are: Inside Diameter (ID), Outside Diameter (OD) and Thickness (Thk).

BOLT AND SCREW TYPES



L - Measure length between these points.

INTERNAL DRIVE TYPES



NUT TYPES

