



AUTOMATIC TRACTOR

Parts Manual

Models
A22A46 46" Automatic Tractor



GB ENGLISH

583 95 93-95 (21548361) Rev 1 02.15.13
Printed in the U.S.A.

HOW TO USE THIS MANUAL

This manual is designed to provide the customer with a means to identify the parts on his/her tractor when ordering repair parts. The illustrations may or may not represent the actual assemblies; therefore, it is not recommended to use this manual as a guide to assemble or disassemble the tractor. Some hardware and parts are drawn larger in order to more readily identify them.

Each tractor has its own model number.

The model number for your tractor can be found on the fender under the seat.

When ordering parts, always give the following information:

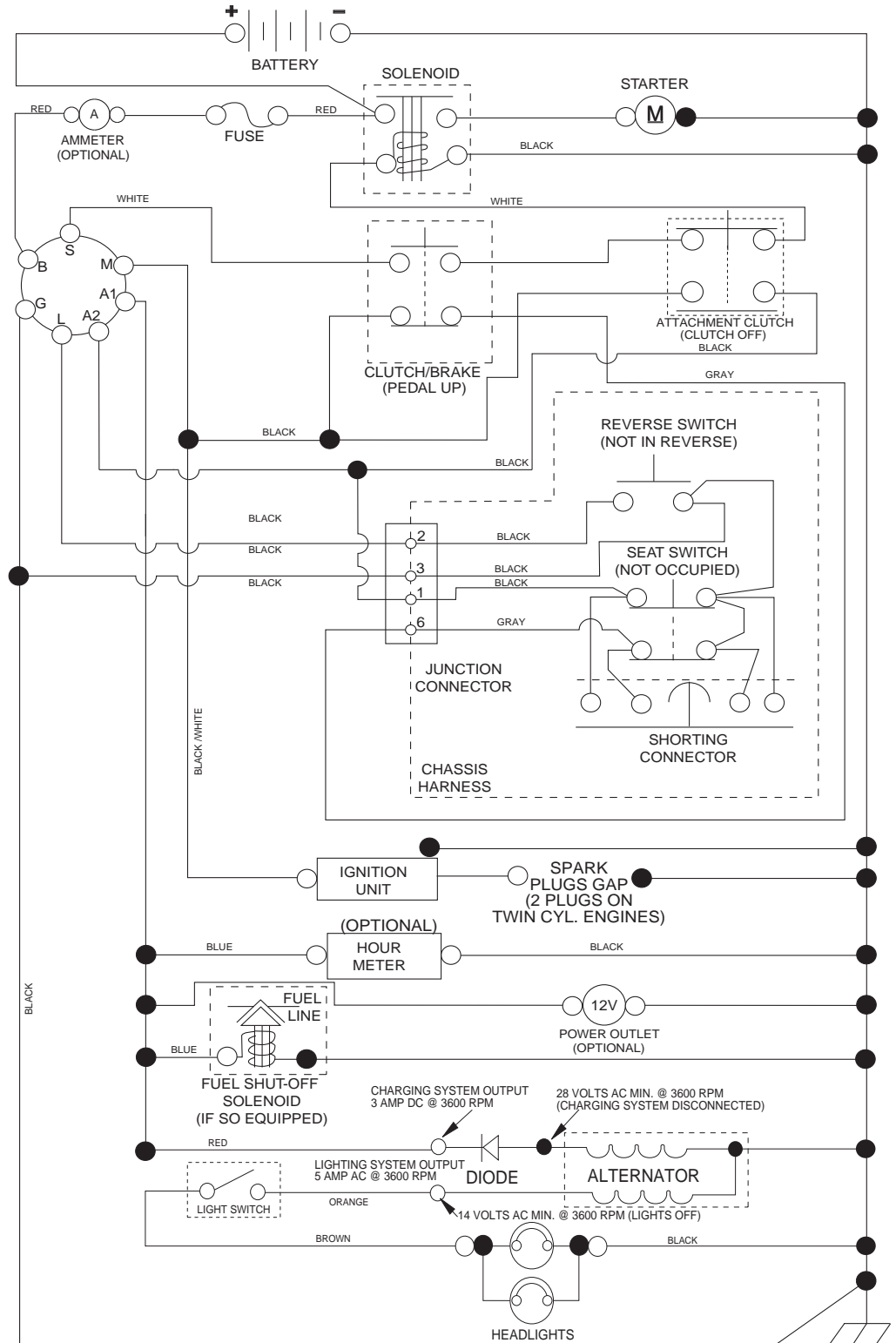
- Product - "Tractor"
- MODEL NUMBER - "A22A46 (96046005601)"
- Part Number
- Part Description

TABLE OF CONTENTS

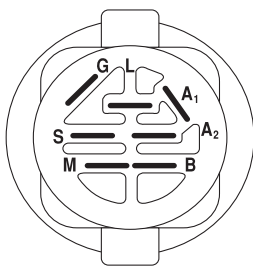
SCHEMATIC	3
ELECTRICAL.....	4-5
CHASSIS	6-7
DRIVE.....	8-9
ENGINE.....	10-11
STEERING	12-13
MOWER DECK	14-15
MOWER LIFT.....	16-17
SEAT	18-19
DECALS.....	20-21
PARTS AND SERVICE.....	22

TRACTOR - MODEL NO. A22A46 (96046005601), PRODUCT NO. 960 46 00-56 SCHEMATIC

SCH11

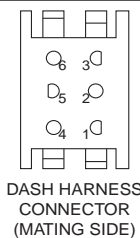
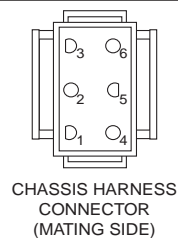


NOTE
YOUR TRACTOR IS EQUIPPED WITH A SPECIAL ALTERNATOR SYSTEM. THE LIGHTS ARE NOT CONNECTED TO THE BATTERY, BUT HAVE THEIR OWN ELECTRICAL SOURCE. BECAUSE OF THIS, THE BRIGHTNESS OF THE LIGHTS WILL CHANGE WITH ENGINE SPEED. AT IDLE THE LIGHTS WILL DIM. AS THE ENGINE IS SPEEDED UP, THE LIGHTS WILL BECOME THEIR BRIGHTEST.

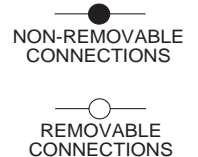


IGNITION SWITCH

POSITION	CIRCUIT	"MAKE"
OFF	M+G+A1	
RUN/OVERRIDE	B+A1	
RUN	B+A1	L+A2
START	B + S + A1	



WIRING INSULATED CLIPS
NOTE: IF WIRING INSULATED CLIPS WERE REMOVED FOR SERVICING OF UNIT, THEY SHOULD BE RE-INSTALLED TO PROPERLY SECURE YOUR WIRING.

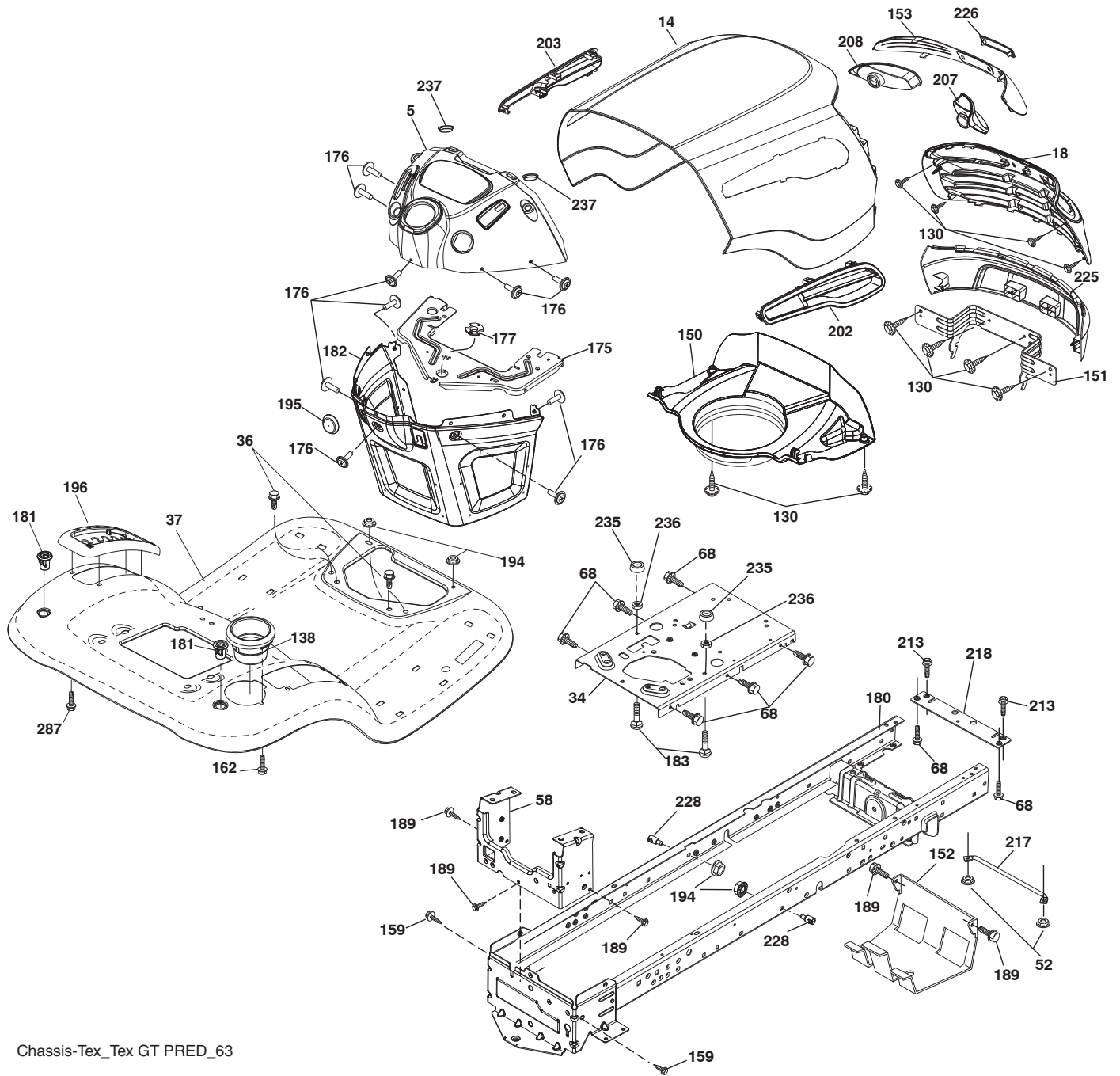


**TRACTOR - MODEL NO. A22A46 (96046005601), PRODUCT NO. 960 46 00-56
ELECTRICAL**

ITEM NO.	MFG. NO.	ARIENS PART NO.	DESCRIPTION
1	532 16 34-65	21546162	BATTERY.12.VOLT.28.AMP.WET
2	874 76 04-12	21546803	BOLT HEX HD 1/4-20 UNC X 3/4
8	532 19 32-28	21546315	BOX.BATTERY.MOUNT.FRONT.LT
16	532 17 61-38	21546205	SWITCH.INTERLOCK.NONO.GRAY
21	532 40 02-52	21547584	HARNESS.ASM.LIGHT.22" (4152J)
22	532 00 41-52	21546673	BULB.LIGHT.#1156
25	581 49 80-01	21548381	CABLE STARTER 6 G4. BL/RED 17.5
26	532 17 51-58	21546200	FUSE.20 AMP.
27	873 51 04-00	21546779	NUT, KEPS HEX 1/4-20 UNC
28	532 42 16-86	21548382	CABLE.GROUND 22"
29	532 40 15-45	21546574	SWITCH.SEAT.DELTA.OPC.9LB.
30	532 19 33-50	21546319	SWITCH.IGN.DLTA.P-IN.ROS
33	532 41 19-33	21547339	KEY/CHAIN.BLISTER PACK.GEN.USA
34	532 11 07-12	21546050	SWITCH.LIGHT/RESET.B/B/RED.
40	581 02 31-01	21548383	HARNESS.IGN.DASH.HUSQ/PRED.
43	532 19 25-07	21546294	SOLENOID.W/BRASS PLUNGER.2005
55	817 06 05-12	21546187	SCREW.5/16-18X3/4.SMGML.TAP/R
71	581 02 30-01	21548384	HARNESS.IGN.CHASSIS.TEX
79	532 17 52-42	21546201	SOCKET ASM.BULB.TWISTLOCK
87	532 19 78-02	21546457	SWITCH.INTERLOCK.CLUTCH
90	532 43 53-95	21547570	COVER TERMINAL BATTERY FR. TEX
99	817 67 04-12	21548385	SCREW HEXWSH
102	581 02 34-01	21548309	HARNESS.PIGTAIL
105	532 40 75-68	21546625	SWITCH REVERSE
106	532 17 48-14	21548386	PAL NUT 1/4 LUGS

NOTE: All component dimensions given in U.S. inches
1 inch = 25.4 mm

**TRACTOR - MODEL NO. A22A46 (96046005601), PRODUCT NO. 960 46 00-56
CHASSIS**



Chassis-Tex_Tex GT PRED_63

**TRACTOR - MODEL NO. A22A46 (96046005601), PRODUCT NO. 960 46 00-56
CHASSIS**

ITEM NO.	MFG. NO.	ARIENS PART NO.	DESCRIPTION
5	532 44 18-82	21548128	DASH P/L TEX CABLE
14	581 56 40-01	21548085	HOOD
18	532 42 73-33	21548064	GRILLE ELITE ARIENS BLACK
34	580 91 08-01	21548072	PLATE.ENGINE.WELDED.CHASSIS
36	817 06 05-12	21546187	SCREW.5/16-18 X 3/4.SMGML.TAP/R
37	532 44 12-06	21548127	FENDER TLT W/CPH
52	873 68 05-00	21546784	NUT.HEX.CROWNLOCK.5/16-18
58	532 41 22-80	21546643	DRAWBAR UPPER
68	817 49 05-08	21546199	SCREW.THDROL.5/16-18 X 1/2TYTT
130	532 41 63-58	21546675	SCREW
138	532 40 97-30	21547560	CUPHOLDER TL TEX 428
150	532 19 94-11	21548056	AIR DUCT ENGINE
151	532 44 54-94	21548070	BRACKET.PIVOT
152	532 19 95-35	21546501	SHIELD.BROWNING.W/TEX
153	532 42 47-17	21548061	ASM LIGHT BOX
159	817 00 06-12	21546181	SCREW.HEXWSH THDR3/8-16 X 3/4.BL
162	532 14 24-32	21546106	SCREW.HEX.WSH.HI-LO.1/4X1/2 UNC
175	532 19 63-04	21548053	CROSSMEMBER
176	532 40 07-76	21546562	SCREW.#10-24 X 5/8.RND.QUDRX.GIM
177	532 19 52-27	21546356	BUSHING.STEERING.YT/GT
180	532 41 50-63	21546670	CHASS. WLDMT TL 12 GA/2PC 18/22
181	532 40 47-96	21547557	BUSHING MNT FEND CRGO BLK TEX
182	532 40 68-59	21548059	DASH LOWER
183	874 52 05-20	21547383	BOLT.FIN.HEX.5/16-18 UNC X1-1/4
189	817 00 05-12	21546180	SCREW.5/16-18X3/4.SMGML.TAP/BL
194	873 90 05-00	21546789	NUT, LOCK HEX FLANGE 5/16-18 UNC
195	532 40 41-37	21547532	PLUG HOLE DASH LOWER
196	532 43 16-58	21548087	CONSOLE ASM.DECKLFT.BL/RBT.TLT
202	581 30 72-02	21548169	VENT.SIDE.RH
203	581 30 66-02	21548123	VENT.SIDE.LH
207	532 19 89-64	21548055	BEZEL.LH
208	532 19 89-63	21548054	BEZEL.RH
213	874 76 05-12	21546803	BOLT.5/16-18X3/4
217	532 40 91-67	21546636	ROD.HOOD.PIVOT
218	532 19 63-95	21546400	X-PIECE.HOOD.STOP
225	581 56 41-01	21548086	BUMPER
226	581 54 16-01	21548084	ARIENS.LOGO.PLATE
228	532 19 51-61	21546343	STUD.FASTNER.W/D'ANTI-ROTATIO
235	532 40 61-29	21546619	SPACER.FENDER
236	873 93 05-00	21546793	NUT.CENTER LOCK.5/16-18 UNC
237	532 40 37-04	21547588	PLUG.MOUNT.CARGO
287	817 60 04-06	21546204	SCREW.HEX.WASHEAD.1/4-20 X 3/8
--	532 44 11-26	21547868	PLUG.DASH.SRVMNDR

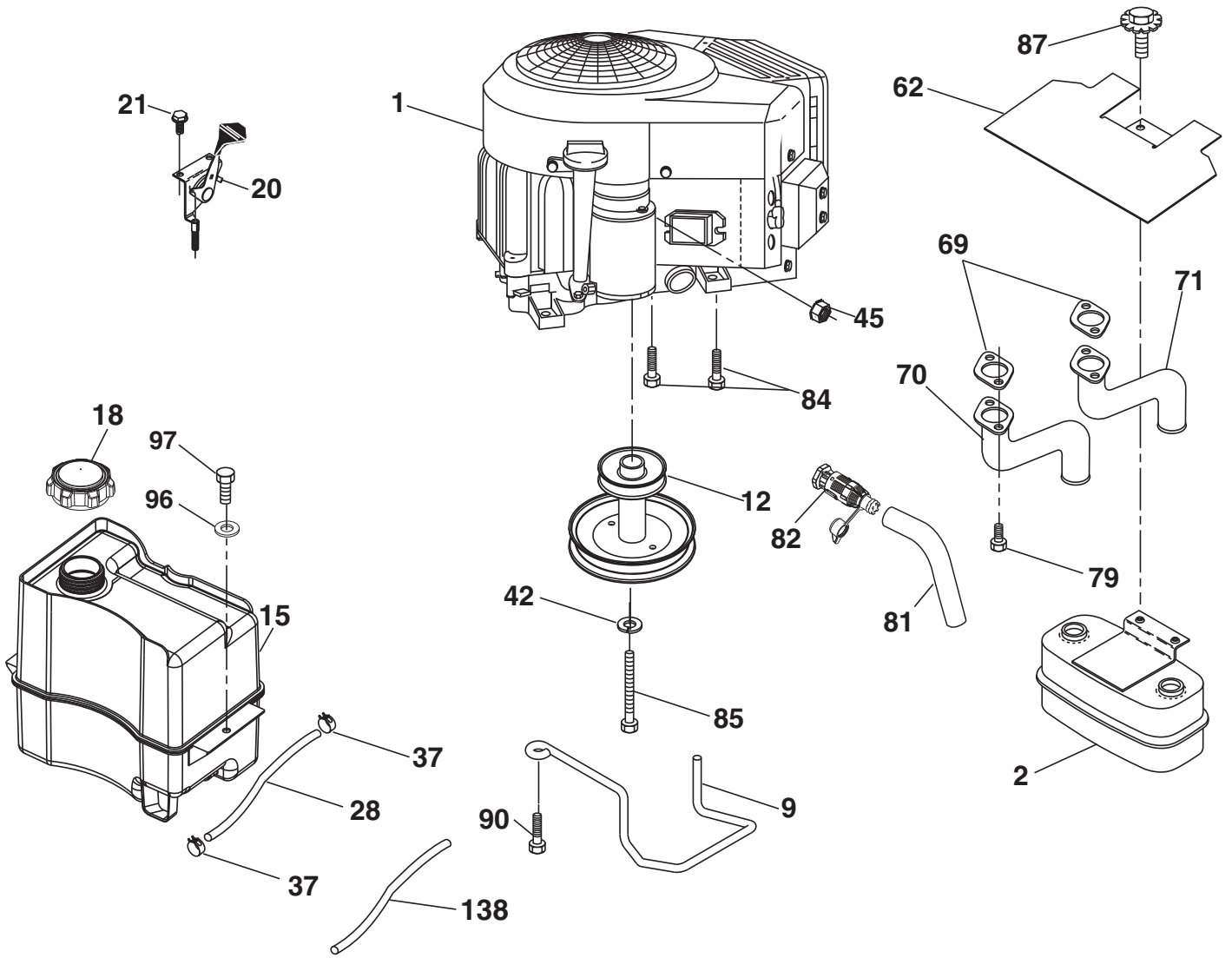
NOTE: All component dimensions given in U.S. inches
1 inch = 25.4 mm

**TRACTOR - MODEL NO. A22A46 (96046005601), PRODUCT NO. 960 46 00-56
DRIVE**

ITEM NO.	MFG. NO.	ARIENS PART NO.	DESCRIPTION
1	---		TRANSMISSION, GENTRANS VATR (580486201) (ORDER PARTS FROM TRANSAXLE MANUFACTURER.)
2	532 12 35-83	21546070	KEY.SQUARE .20 X .1845/.1865
5	873 68 06-00	21546785	NUT.CROWNLOCK
6	532 12 40-28	21547114	BUSHING SNAP
15	819 13 13-16	21546284	WASHER 13/32 X 13/16 X 16 GA.
17	532 41 36-78	21546654	SPRING BRAKE
26	532 19 96-79	21546508	SPRING RETURN CRUISE
29	581 47 93-01	21548271	ROD BRAKE
33	812 00 00-01	21546051	E-RING. #5133-75
35	532 43 54-86	21548066	ROD.BRAKE.PARKING.
37	532 18 89-67	21546272	WASHER HARDEN .793 X 1.637 X 060
42	532 12 48-72	21547538	COVER.PEDAL.BLK.ROUND
49	872 11 06-14	21546766	BOLT.RDHD.3/8-16UNCX1-3/4.GR 5
50	532 19 43-27	21546331	IDLER.FLAT
51	873 90 06-00	21546790	NUT, HEX, FLANGELOCK 3/8-16
52	532 19 43-26	21546330	IDLER.V-GROOVE.OFFSET
56	532 19 72-53	21546422	BELT.DRIVE
64	532 44 83-53	21548307	SHAFT ASM. PEDAL BRAKE
67	819 13 13-12	21546283	WASHER 13/32 X 13/16 X 12 GA.
73	874 49 05-44	21546798	BOLT.HEX.FLGHD.5/16-18.GR.5
92	874 76 05-20	21546806	BOLT 5/16-18 X 1-1/4
99	532 43 59-35	21548267	ROD BYPASS
116	873 90 05-00	21546789	NUT, LOCK HEX FLANGE 5/16-18 UNC
125	817 00 05-12	21546180	SCREW.5/16-18 X 3/4.SMGML.TAP/BL
143	817 49 05-08	21546199	SCREW.THDROL.5/16-18 X 1/2 TYTT
159	876 02 04-12	21546820	PIN COTTER 1/8 X 3/4
160	532 16 94-84	21546178	RETAINER.CLIP(M).DIA.290
161	532 10 57-09	21546028	SPRING.RETURN.CLUTCH.6.75
163	532 44 82-68	21548305	ROD CONTROL PEDAL
166	532 42 91-64	21547349	NUT PUSH .625
167	532 40 52-57	21546608	LATCH.BRAKE.PARKING
172	583 97 42-01	21548347	STRAP TORQUE VARIATOR
184	532 44 14-55	21548069	HANDLE.PARKING BRAKE
185	872 11 06-22	21546768	BOLT.RDHD.3/8-16 UNC X 2-3/4 GR.5
186	532 19 43-21	21546328	SPACER.RETAINER
187	819 13 32-10	21546287	WASHER.13/32 X 2 X 10 GA.
188	532 19 43-23	21546329	LINK.CLUTCH.GROUND DRIVE
189	532 19 43-17	21546324	BELLCRANK.GROUNDRIE.NSTG/NSTL
190	532 19 43-18	21546325	KEEPER.BELLCRANK.DRIVE.GROUND
195	581 50 46-01	21548272	BRAKE BRACKET
203	819 11 11-16	21546279	WASHER 11/32 X 11/16 X 16 GA.
205	532 12 17-48	21546066	WASHER.25/32 X 1-5/8 X 16 GA.
206	532 44 85-96	21548308	BRACKET MOUNT LATCH CRUISE
207	532 44 82-64	21548302	LATCH CONTROL CRUISE
209	532 19 95-92	21548120	ROD CONTROL CRUISE
210	532 44 82-70	21548306	WELDMENT PEDAL
211	532 12 01-83	21546061	BEARING NYLON
213	532 40 31-19	21548124	KNOB CONTROL CRUISE
214	532 42 12-63	21547005	PEDAL FORWARD PAD
215	532 44 82-54	21548301	CAP PEDAL REVERSE
221	532 40 31-87	21546588	RETAINER.SPRING.CLIP.HANDLE
222	879 21 20-10	21546821	WASHER 21/32 X 1-1/4 10 GA.
278	580 36 91-01	21548316	BOLT CRUISE VARIATOR
282	874 49 05-48	21548239	BOLT.HEX. 5/16-18 X
298	532 41 56-83	21547209	BRACKET MOUNT IDLER
300	532 41 56-81	21547210	KEEPER IDLER REAR
301	532 41 56-80	21547211	PULLEY IDLER V-GROOVE
302	581 42 05-01	21548266	PULLEY IDLER FLAT 2.0 OD
303	872 11 06-18	21547133	BOLT RDHD SGNK 3/8-16 X 2-1/4
345	872 11 06-06	21547050	BOLT RDHD
373	581 46 18-01	21548269	SPACER IDLER
374	581 47 52-01	21548270	BRACKET BRAKE ARM
375	874 76 06-36	21548291	BOLT.HEX
376	532 42 65-89	21547489	NUT FLANGE HEX 5/16 X 18
377	584 30 34-01	21548348	GEAR SECTOR CONTROL CRUISE VATR
378	584 28 77-01	21548349	NUT PUSH

NOTE: All component dimensions given in U.S. inches
1 inch = 25.4 mm

**TRACTOR - MODEL NO. A22A46 (96046005601), PRODUCT NO. 960 46 00-56
ENGINE**



29

SPARK ARRESTER KIT

engine-tex_bs-2cyl_93

TRACTOR - MODEL NO. A22A46 (96046005601), PRODUCT NO. 960 46 00-56 ENGINE

ITEM NO.	MFG. NO.	ARIENS PART NO.	DESCRIPTION
1	-----	-----	ENGINE BRIGGS MODEL NO. 407777-3195-G5 (581081901)(ORDER PARTS FROM ENGINE MANUFACTURER.)
2	532 14 97-23	21546118	MUFFLER ASM.TWIN.LO-TONE
9	532 19 43-19	21546326	KEEPER.BELT.ENGINE.3.25"NSTG
12	532 40 51-40	21546606	PULLEY.ENGINE
15	532 43 30-07	21547730	TANK FUEL
18	532 43 85-96	21547731	CAP FUEL
20	532 42 35-02	21547806	CONTROL THROTTLE/CHOKE
21	532 41 63-58	21546675	SCREW
28	532 13 70-40	21548052	LINE.FUEL.FRONT.20"
29	532 13 71-80	21546090	KIT.SPARK ARRESTOR(392390 B&S)
37	532 12 34-87	21546069	CLAMP.HOSE.BLK.
42	810 04 07-00	21546004	WASHER.LOCK.HVY HLCL.SPR.7/16
45	873 51 04-00	21546779	NUT, KEPS HEX 1/4-20 UNC
62	532 43 40-17	21547370	SHIELD.HEAT.MUFFLER.
69	532 16 53-91	21547297	GASKET MUFFLER
70	532 15 99-55	21547295	EXHAUST TUBE LH
71	532 16 05-89	21547296	EXHAUST TUBE RH
79	532 18 39-06	21547307	SCREW SOCKET HEAD 5/16-18 X 1
81	532 14 84-56	21546117	TUBE.DRAIN.OIL.EASY
82	532 42 82-87	21547348	VALVE OIL DRAIN
84	817 06 06-20	21547225	SCREW 3/8-16 X 1-1/4
85	532 17 39-37	21546191	BOLT.HEX.7/16-20 X 4 X GR. 5-1.5THR.
87	532 17 18-77	21546190	BOLT.5/16-18 UNC X 3/4 W/SEMS.BLK
90	817 00 06-16	21546182	SCREW.3/8-16X1.SMGML.TAP/R.BLK
96	819 09-14-16	21546277	WASHER.9/32 X 7/8 X 16 GA.
97	817 67 04-12	21546207	SCREW.HEXWSH.THDROL.1/4-20 X 3/4
138	532 41 41-19	21546660	PURGE.LINE.CARB.

NOTE: All component dimensions given in U.S. inches
1 inch = 25.4 mm

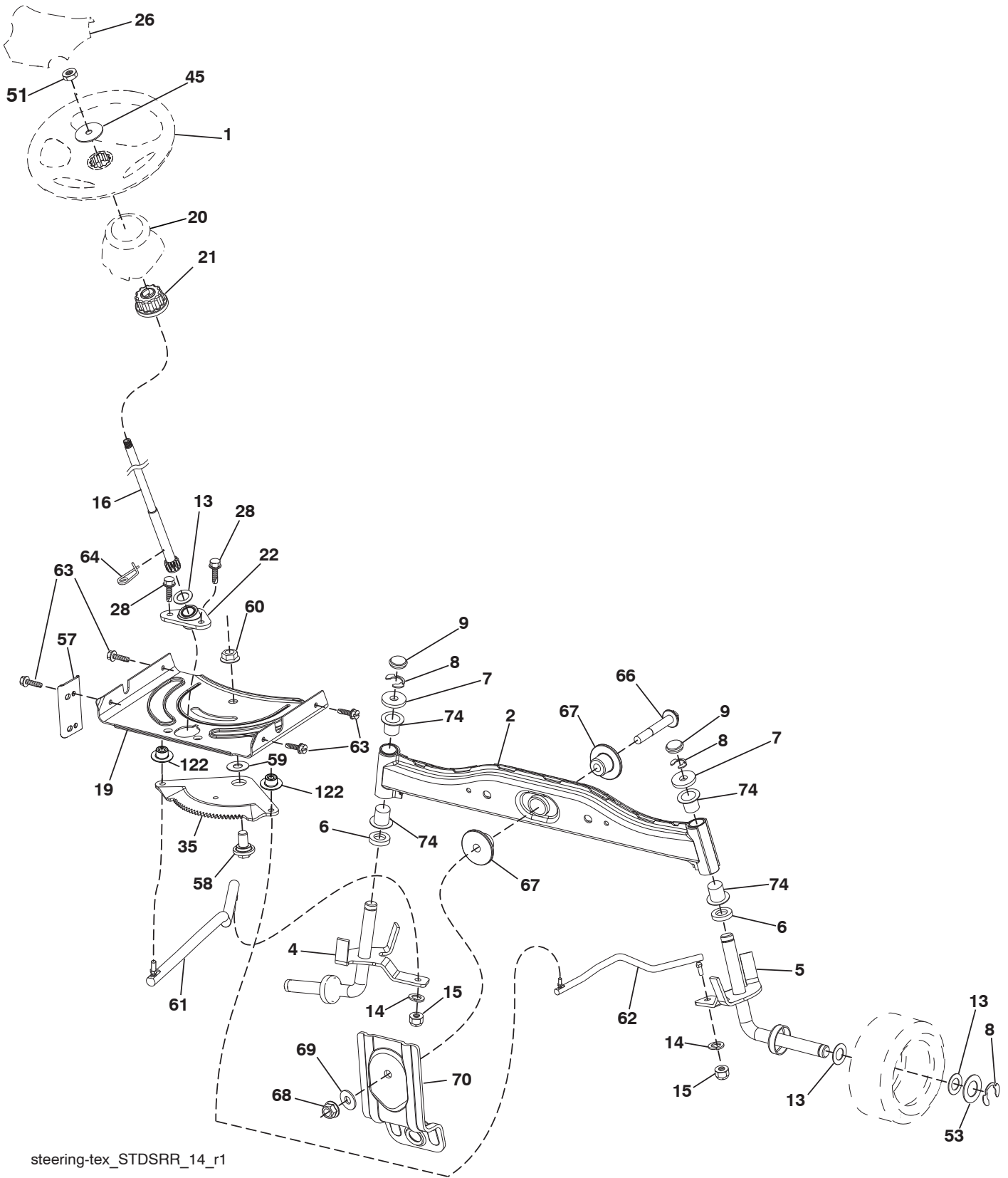
For engine service and replacement parts, call the toll free number for your engine manufacturer listed below:

Briggs & Stratton 1-800-233-3723

Engine Power Rating Information

The gross power rating for individual gas engine models is labeled in accordance with SAE (Society of Automotive Engineers) code J1940 (Small Engine Power & Torque Rating Procedure), and rating performance has been obtained and corrected in accordance with SAE J1995 (Revision 2002-05). Torque values are derived at 3060 RPM; horsepower values are derived at 3600 RPM. Actual gross engine power will be lower and is affected by, among other things, ambient operating conditions and engine-to-engine variability. Given both the wide array of products on which engines are placed and the variety of environmental issues applicable to operating the equipment, the gas engine will not develop the rated gross power when used in a given piece of power equipment (actual "on-site" or net power). This difference is due to a variety of factors including, but not limited to, accessories (air cleaner, exhaust, charging, cooling, carburetor, fuel pump, etc.), application limitations, ambient operating conditions (temperature, humidity, altitude), and engine-to-engine variability. Due to manufacturing and capacity limitations, Briggs & Stratton may substitute an engine of higher rated power for this Series engine.

TRACTOR - MODEL NO. A22A46 (96046005601), PRODUCT NO. 960 46 00-56
STEERING ASSEMBLY



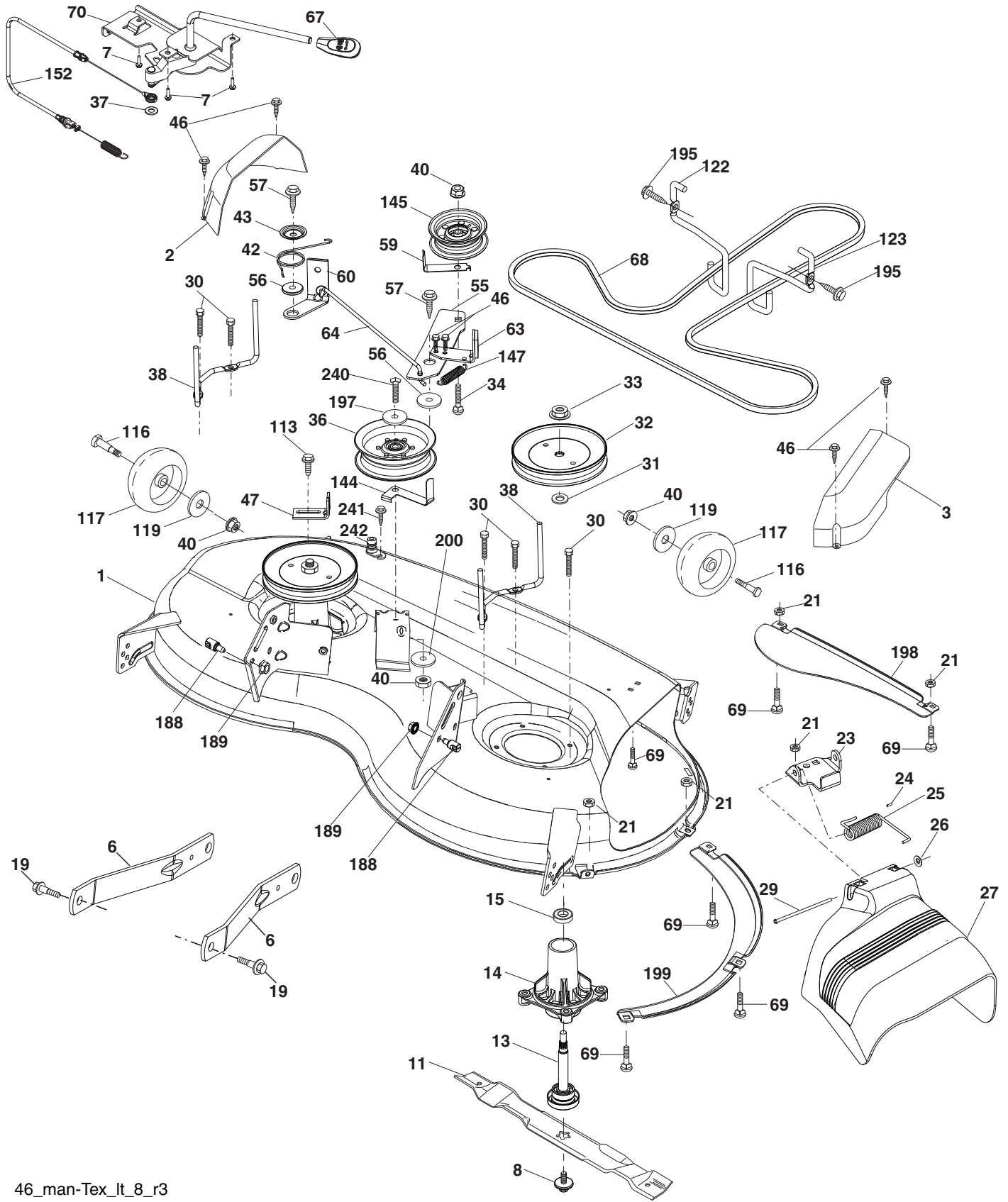
steering-tex_STDSRR_14_r1

**TRACTOR - MODEL NO. A22A46 (96046005601), PRODUCT NO. 960 46 00-56
STEERING ASSEMBLY**

ITEM NO.	MFG. NO.	ARIENS PART NO.	DESCRIPTION
1	532 42 41-46	21547582	WHEEL STEERING
2	532 41 81-68	21546681	AXLE ASM.WELDED
4	532 40 30-87	21546582	SPINDLE.WELDED.LH.15"TEX
5	532 40 30-88	21546583	SPINDLE.WELDED.RH.15"TEX
6	532 12 49-31	21547540	WASHER THRUST .75 X 1.230
7	532 12 17-48	21546066	WASHER.25/32 X 1-5/8 X 16GA.
8	812 00 00-29	21546053	RING.KLIP:#T5304-75
9	532 12 12-32	21546064	CAP.SPINDLE.FR.TOP.BLK.
13	532 12 17-49	21546067	WASHER.25/32 X 1 1/4 X 16 GA.
14	810 04 06-00	21546003	WASHER, LOCK 3/8
15	873 54 06-00	21546782	NUT.CROWNLOCK.3/8-24
16	532 40 82-19	21546628	SHAFT.STEER.3/4 TEX.NON-PLATED
19	532 19 47-29	21546334	PLATE.STEER.DDL.NLT/NGT
20	532 42 47-40	21548063	BOOT STEERING.428
21	532 18 67-37	21546234	ADAPTER.WHEEL.STRG..760
22	532 42 05-37	21547007	STEERING SUPT. LOWER
26	532 42 46-91	21547568	CAP WHEEL STEERING BLACK
28	817 00 06-12	21546181	SCREW.HEXWSH THDR 3/8-16 X 3/4.BL
35	532 19 47-32	21546335	GEAR SECTOR.PLATE.DDL.NLT/NGT
45	819 18 38-12	21546291	WASHER.9/16ID X2 3/8OD X 12GA
51	873 94 08-00	21546795	NUT.HEX.JAM.TOPLOCK.1/2-20 UNF
53	532 18 89-67	21546272	WASHER.HARDEN..793 X 1.637 X 060
57	532 40 74-65	21546623	BRACKET.UPSTOP.TEX
58	532 19 47-47	21546339	BOLT.SHOULDER.SECTOR.PIVOT.CFM
59	532 19 47-48	21546340	WASHER.THRUST.SECTOR.STEER.NLT
60	873 97 10-00	21546797	NUT.FLANGE LOCK.5/8-11
61	532 19 47-40	21546337	DRAGLINK.LH.BALLSTUD.DDL.
62	532 19 47-41	21546338	DRAGLINK.RH.BALLSTUD.DDL
63	817 00 05-12	21546180	SCREW.5/16-18X3/4.SMGML.TAP/BL
64	532 19 98-49	21546512	RETAINER.CLIPSPRING.STEERING
66	871 02 07-48	21546754	BOLT.HEX.FGHD.7/16-14 X 3.SERR
67	532 19 47-37	21546336	BUSHING.PM.FRONT AXLE
68	873 90 07-00	21546791	NUT.LOCK.FLANGE.7/16-14.GR5
69	532 19 91-62	21546483	WASHER.1.5 X .505 X .118
70	532 19 61-97	21546386	BRACKET.DECK.SUSPENSION.FRONT
74	532 12 49-37	21547541	BEARING COL STRNG BLK
122	532 44 49-62	21547948	CAP GEAR SECTOR

NOTE: All component dimensions given in U.S. inches
1 inch = 25.4 mm

**TRACTOR - MODEL NO. A22A46 (96046005601), PRODUCT NO. 960 46 00-56
MOWER DECK**



46_man-Tex_it_8_r3

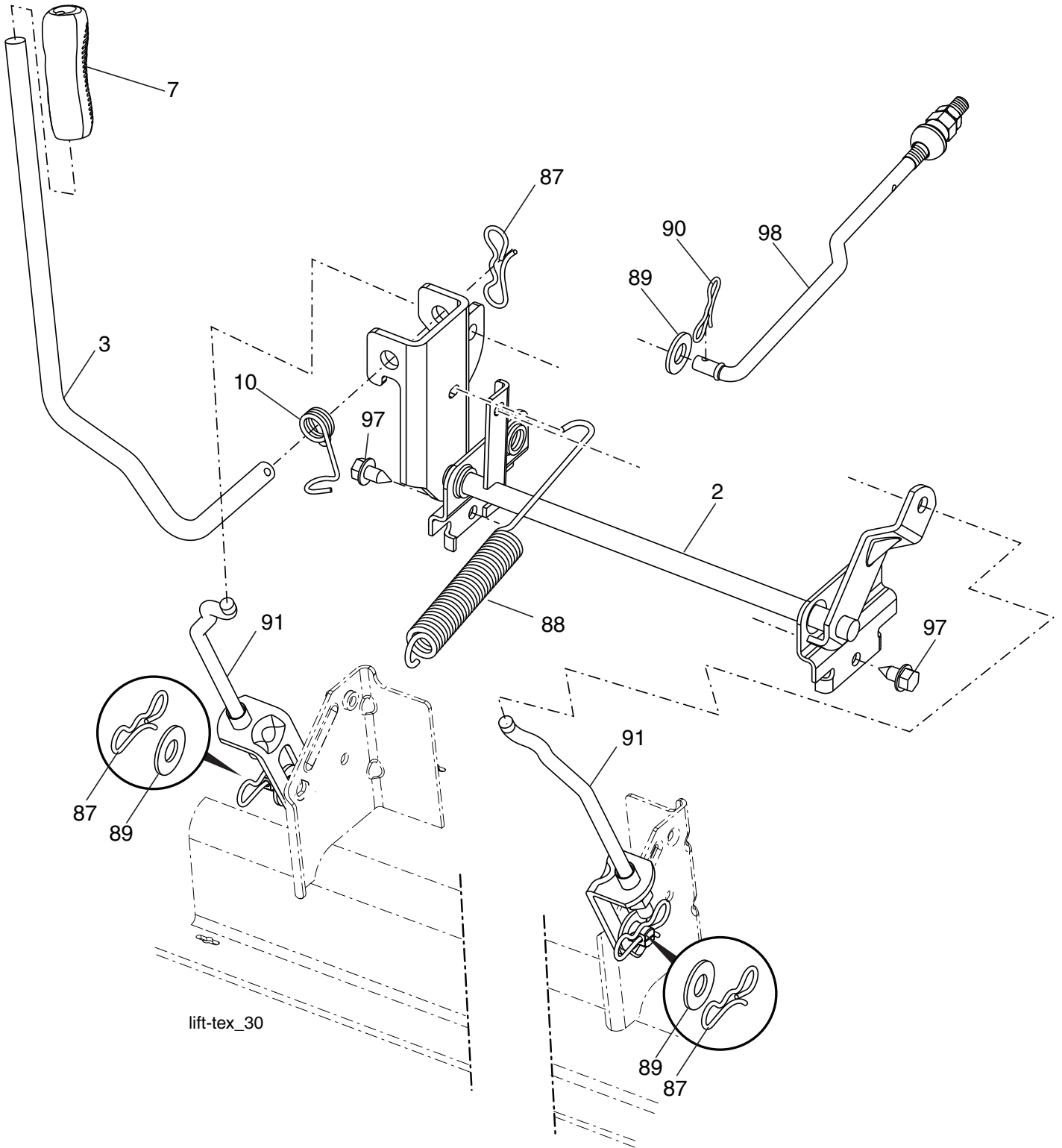
TRACTOR - MODEL NO. A22A46 (96046005601), PRODUCT NO. 960 46 00-56

MOWER DECK

ITEM NO.	MFG. NO.	ARIENS PART NO.	DESCRIPTION
1	532 44 16-11	21547818	MOWER HOUSING
2	532 40 55-07	21546618	COVER.MANDREL LH
3	532 40 55-06	21546617	COVER.MANDREL RH
6	532 19 51-86	21546347	ARM.SUSPENSION.MOWER.REAR.LD
7	532 41 63-58	21546675	SCREW #10 X 0.750 BOS THREAD
8	532 19 30-03	21546301	BOLT/WASHER ASM.7/16-20.UNF
11	532 40 53-80	21546611	BLADE.MOWER.46"HI LIFT BAGGER
13	532 19 28-72	21546300	SHAFT ASM.MNDRL.N/GREASEABLE
14	532 18 72-81	21546238	HOUSING.MANDREL.4PT.SERVICE
15	532 11 04-85	21546046	BEARING.BALL.MANDREL
19	532 19 65-39	21546411	BOLT.SHOULDER
21	873 68 05-00	21546784	NUT, HEX, CROWNLOCK 5/16-18
23	532 19 25-57	21546296	BRACKET.DEFLECTOR.38/42"2005
24	532 10 53-04	21546025	CAP.SLEEVE..80 X.112.BLK.MOWER
25	532 19 70-26	21546416	SPRING.TORSION.DFL.38/42/46.GR
26	532 11 04-52	21546045	NUT.PUSH.PHOS.& OIL
27	532 40 53-57	21546610	SHIELD.DEFLECTOR.MOWER 46"BLK
29	532 13 14-91	21546081	ROD.HINGE.42/46"
30	532 17 39-84	21546192	SCREW.THD ROLL.DOD PT.HEX
31	532 18 76-90	21546253	WASHER.SPACER.MANDREL
32	532 19 74-73	21546446	PULLEY.MANDREL.5.438 PD.42"
33	532 40 02-34	21546554	NUT.FLANGE.LOCK.TOP
34	872 11 06-12	21546765	BOLT.CARR.SH.3/8-16 X 1-1/2.GR5
36	532 19 73-79	21546440	PULLEY.IDLER.4.50.RAW
37	819 13 13-16	21546284	WASHER.13/32.X13/16.X16GA
38	532 43 25-20	21547367	KEEPER.BELT
40	873 90 06-00	21546790	NUT, HEX, FLANGELOCK 3/8-16
42	532 19 84-10	21546478	SPRING.TORSION.BRAKE
43	532 19 72-56	21546423	SPRING.TORSION.RETAINER
46	532 13 77-29	21546091	SCREW.THD.ROLL.1/4-20 X 5/8
47	532 19 72-50	21546421	BRACKET.CLUTCH.CABLE
55	532 19 72-49	21546419	IDLER.ARM
56	532 19 90-92	21546482	SPACER.RETAINER
57	817 00 06-16	21546182	SCREW.3/8-16X1.SMGML.TAP/R.BLK
59	532 14 10-43	21546103	GUARD.TUV.IDLER
60	532 19 94-71	21546497	ARM.BRAKE.MOWER.LH
63	532 19 94-77	21546499	ARM.BRAKE.MOWER
64	532 40 51-38	21548125	LINKAGE.ASM.BRAKE
67	532 40 30-12	21547741	HANDLE.CLUTCH.CABLE
68	532 40 51-43	21546607	V-BELT
69	872 14 05-05	21546179	BOLT.5/16-18 HEX.WHS.HD.LCKSERR
70	532 19 99-72	21548121	CLUTCH.ASM.MANUAL
113	817 00 05-10	21546179	BOLT.5/16-18.HEX.WHS.HD.LCKSERR
116	532 12 48-42	21547537	BOLT SHLD "A" 2.41 "B" 1.66
117	532 18 86-06	21546267	WHEEL.GAGE.HALF.SPOKED
119	819 12 14-14	21546281	WASHER 3/8 X 7/8 X 14 GA.
122	532 19 72-58	21546424	KEEPER.BELT.ENGINE.LH
123	532 19 72-59	21546426	KEEPER.BELT.ENGINE.RH
144	532 19 92-04	21546489	KEEPER.BELT.MOWER
145	532 19 31-97	21546308	PULLEY.IDLER
147	532 40 18-72	21546577	SPRING
152	532 43 51-11	21547599	CABLE.CLUTCH.MANUAL
188	532 19 51-61	21546343	STUD.FASTNER.W/D'ANTI-ROTATION
189	873 90 05-00	21546789	NUT, LOCK HEX FLANGE 5/16-18 UNC
195	817 00 06-12	21546181	SCREW.3/8-16X3/4
197	819 13 13-12	21546283	WASHER.13-32 X 13/16 X 12 GA.
198	532 40 31-49	21546584	BAFFLE.CENTER FRONT
199	532 40 31-50	21546586	BAFFLE.FRONT RH
200	532 41 35-24	21546651	WASHER 13/32 X 1 X 1/2
240	874 52 06-36	21546799	BOLT 3/8-16 X 2-1/4 GR. 5
241	532 15 29-27	21547128	SCREW #10-32.5 3/8 FLANGE
242	532 41 55-98	21547345	PORT WASHOUT
--	532 41 64-05	21547347	COUPLING QUICK CONNECT
--	532 19 28-70	21546299	MANDREL ASSEMBLY (INCLUDES HOUSING (KEY #14), SHAFT ASSEMBLY (KEY #13), AND BEARING ONLY (KEY #15) - PULLEY/NUT/WASHER AND BLADE BOLT/WASHERS NOT INCLUDED)
--	532 41 80-63	21547593	REPLACEMENT MOWER, COMPLETE

NOTE: All component dimensions given in U.S. inches
1 inch = 25.4 mm

**TRACTOR - MODEL NO. A22A46 (96046005601), PRODUCT NO. 960 46 00-56
MOWER LIFT**

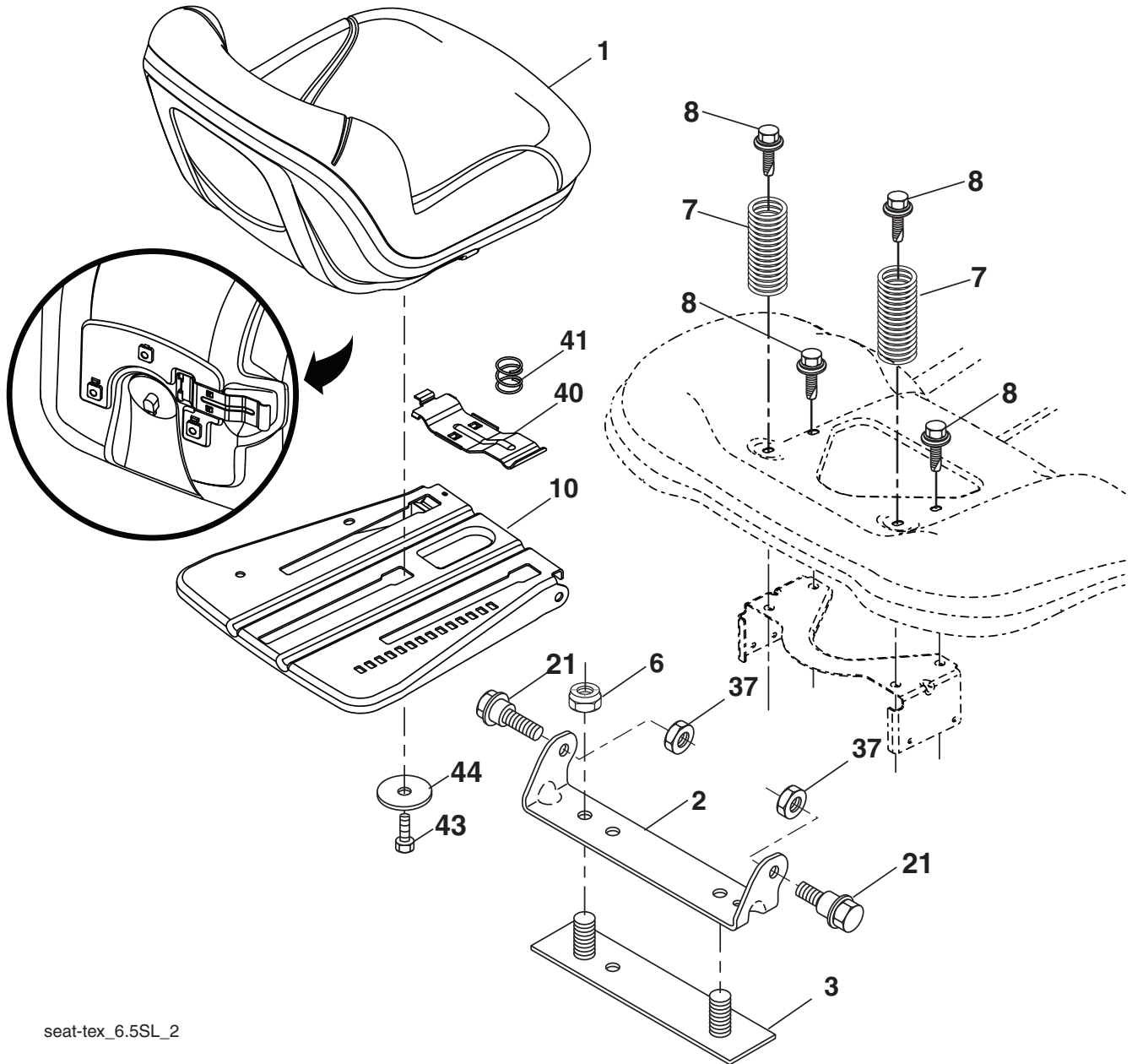


**TRACTOR - MODEL NO. A22A46 (96046005601), PRODUCT NO. 960 46 00-56
MOWER LIFT**

ITEM NO.	MFG. NO.	ARIENS PART NO.	DESCRIPTION
2	532 42 20-27	21547008	SHAFT ASM., LIFT
3	532 42 68-96	21548088	LEVER.LIFT.MULITPOSITION
7	580 96 23-01	21548049	GRIP LEVER 5625 LD BLACK 428
10	532 19 63-14	21546397	SPRING.TORSION.HANDLE.LIFT
87	532 19 42-09	21546322	PIN.COTTER.7/16.BOW TIE LOCK
88	532 41 07-10	21546638	SPRING.LIFT ASSIST
89	819 19 19-12	21546292	WASHER.CLEAR ZINC
90	532 19 42-08	21546321	PIN.COTTER.5/16.BOW TIE LOCK
91	532 19 51-81	21546344	LINK ASM.LIFT.LH.REAR
97	817 00 06-12	21546181	SCREW.HEXWSH THDR3/8-16 X 3/4.BL
98	532 19 52-70	21546360	LINK ASM.SUSP.FRONT.MWR.11

NOTE: All component dimensions given in U.S. inches
1 inch = 25.4 mm

**TRACTOR - MODEL NO. A22A46 (96046005601), PRODUCT NO. 960 46 00-56
SEAT ASSEMBLY**



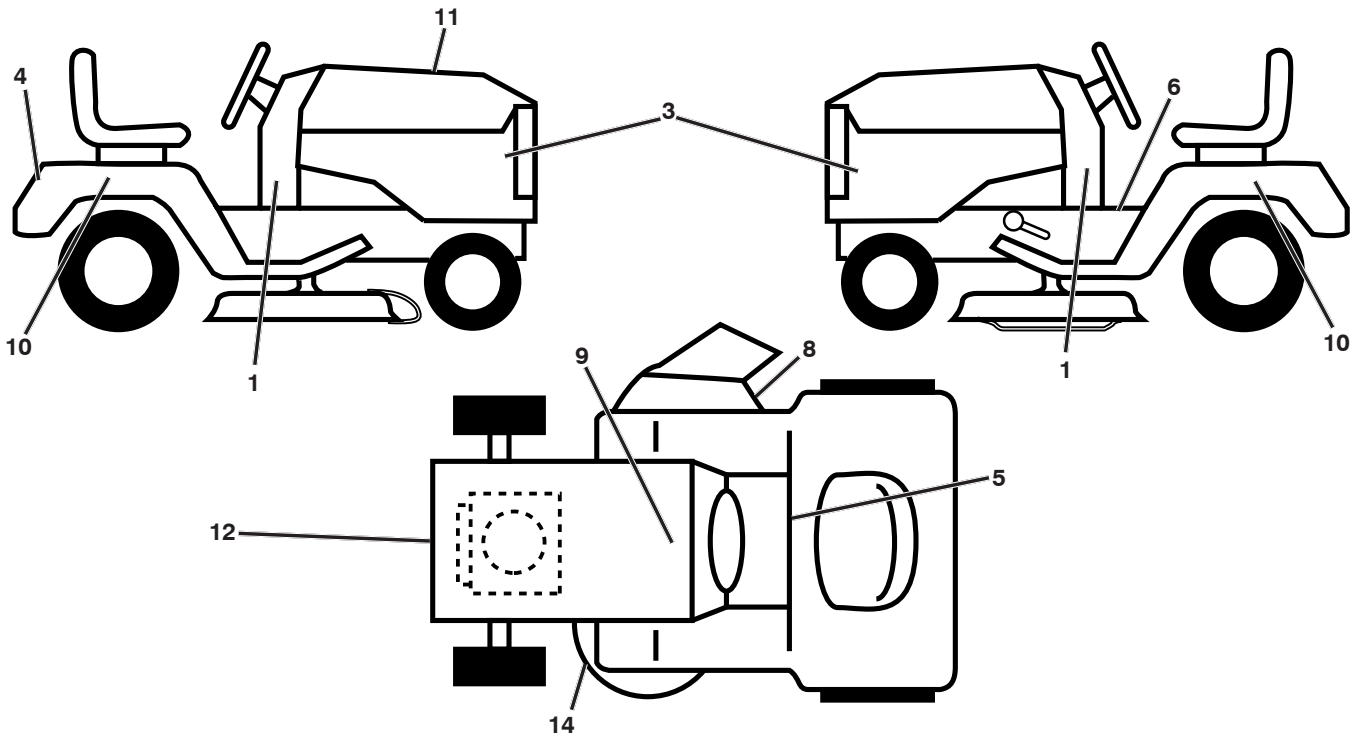
seat-tex_6.5SL_2

**TRACTOR - MODEL NO. A22A46 (96046005601), PRODUCT NO. 960 46 00-56
SEAT ASSEMBLY**

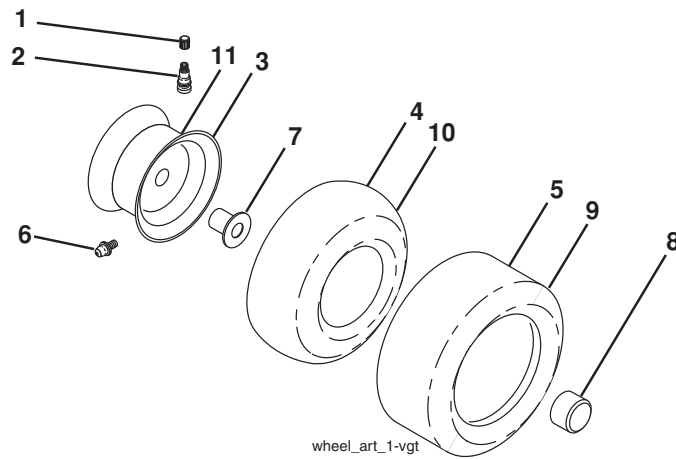
ITEM NO.	MFG. NO.	ARIENS PART NO.	DESCRIPTION
1	532 42 30-10	21546703	SEAT.TA150.KB/SLD.BLK.ARIENS
2	532 18 01-66	21546216	BRACKET.PIVOT.FENDER.2002
3	532 14 06-75	21546101	STRAP ASM.FENDER.94
6	873 80 06-00	21546787	LOCKNUT, WASHER INSERT 3/8-16
7	532 12 41-81	21546074	SPRING.SEAT.CPRSN.2.250.BLK.ZI
8	532 17 18-77	21546190	BOLT.5/16-18 UNC X 3/4 W/SEMS.BLK
10	532 19 69-77	21546414	PAN ASM.SEAT.3PT.
21	532 17 18-52	21546189	BOLT.SHLD.5/16-18 UNC-2A.BLK D
37	873 80 05-00	21546786	LOCKNUT, WASHER INSERT 5/16-18
40	532 19 76-61	21546451	HANDLE.SLIDE.SEAT.TEX.MILSCO
41	532 19 82-00	21546473	SPRING.LATCH.SEAT.TEX
43	874 76 06-12	21546810	BOLT.FIN.HEX.3/8-16 UNC X 3/4
44	819 13 38-12	21546288	WASHER.13/32 X 2 3/8 X 12 GA.

NOTE: All component dimensions given in U.S. inches
1 inch = 25.4 mm

**TRACTOR - MODEL NO. A22A46 (96046005601), PRODUCT NO. 960 46 00-56
DECALS**



WHEELS AND TIRES



**TRACTOR - MODEL NO. A22A46 (96046005601), PRODUCT NO. 960 46 00-56
DECALS**

ITEM NO.	MFG. NO.	ARIENS PART NO.	DESCRIPTION
1	581 51 70-01	21548079	DECAL.LOWER.DASH.22HP
3	532 43 91-26	21547732	DECAL.SDPNL
4	532 43 91-24	21547668	DECAL.FENDER.REAR.ARIENS
5	532 44 63-54	21547918	DECAL.FENDER.AMERICA.CRAFT
6	581 57 89-01	21548131	DECAL WARNING START INST.
8	581 57 95-01	21548132	DECAL MOWER.WARN.KEEP HAND AWY
9	532 14 50-05	21546109	DECAL.BAT.DAN/POI P/L SYM.WPN
10	581 66 51-01	21548134	DECAL FENDER SIDE HYDRO ARIENS
11	581 88 18-01	21548315	DECAL REPLACEMENT
12	581 25 85-01	21548122	DECAL ENGINE
14	581 58 00-01	21548133	DECAL V-BELT.SCH.42/46"MEC/ELE
--	581 72 48-01	21548135	DECAL BYPASS.FENDER.CRD/LT/YT
--	532 40 95-07	21547938	PAD FOOTREST
--	532 40 95-05	21547559	PAD FOOTREST LH TLT BLACK .428
--	581 91 91-24	21548311	MANUAL, OPERATORS (ENGLISH/FRENCH)
--	581 91 91-49	21548313	MANUAL, OPERATORS (SPANISH)
--	583 95 93-95	21548361	MANUAL, PARTS (ENGLISH/FRENCH)
--	583 95 93-96	51248362	MANUAL, PARTS (SPANISH)

NOTE: All component dimensions given in U.S. inches
1 inch = 25.4 mm

ITEM NO.	MFG. NO.	ARIENS PART NO.	DESCRIPTION
1	532 05 91-92	21546747	CAP, VALVE, TIRE
2	532 06 51-39	21546751	STEM, VALVE
3	532 43 96-73	21547813	RIM ASM.6"FRONT.BLACK.SERVICE
4	532 05 99-04	21546748	TUBE, FRONT
5	532 10 62-22	21546034	TIRE, FRONT
6	532 12 49-57	21546037	RIM ASM.6"FRONT.BLACK.SERVICE
7	532 12 49-59	21547542	BEARING FLANGE
8	532 17 50-39	21547547	CAP AXLE (FRONT WHEEL ONLY)
9	532 13 84-68	21546094	TIRE.R.TS.20 X 8-8.C.SERVICE
10	532 12 49-26	21547539	TUBE, REAR
11	532 44 08-81	21547814	RIM ASM.8"REAR.W.GRY.SRVCE.643
--	532 14 43-34	21546845	SEALANT, TIRE (10 OZ. TUBE)

NOTE: All component dimensions given in U.S. inches
1 inch = 25.4 mm