

Onan

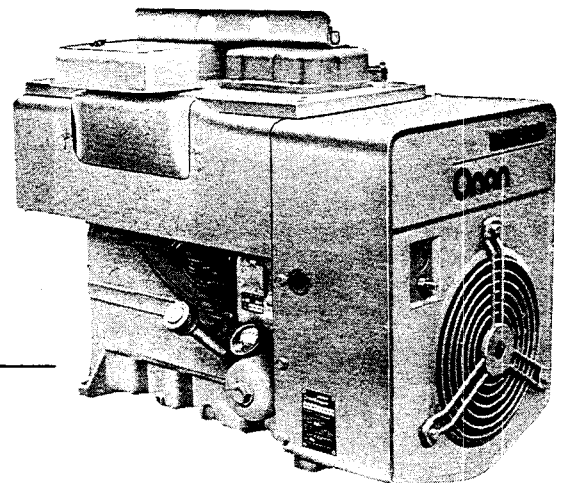
Parts Manual

JB-JC Engine



<http://BestManuals.net>

Best.Manuals@yahoo.com



967-0254
JB (SPEC A-T)
JC (SPEC A-V)
9-74
Printed in U.S.A.

This parts catalog applies to the standard J-Series Industrial Engines as listed in the Engine Data Table. Parts are arranged in groups of related items. Each illustrated part is identified by a reference number corresponding to the same reference number in the *parts list* for the group. Parts illustrations represent typical items and do not necessarily portray a particular part number. Compare your engine nameplate MODEL and SPEC NO. with the Engine Data Table. Select the *quantity used* column (B or C in the last column) that applies to your engine MODEL and SPEC NO.

Many parts are interchangeable between the 2-cylinder and 4-cylinder engines. The quantity used per engine varies, therefore the quantity used column is sub-divided. Use column B for quantity used on 2-cylinder models and column C for quantity used on 4-cylinder models. Unless otherwise mentioned in the parts description, parts are interchangeable between the various models on which they are used as indicated by the quantity used column. Right and left sides are determined when *facing* the blower (front) end of the engine.

ENGINE DATA TABLE

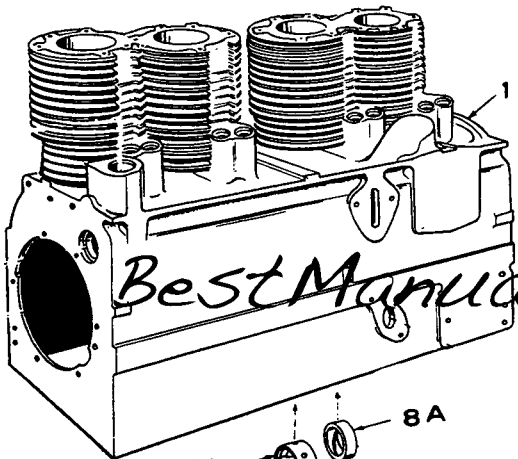
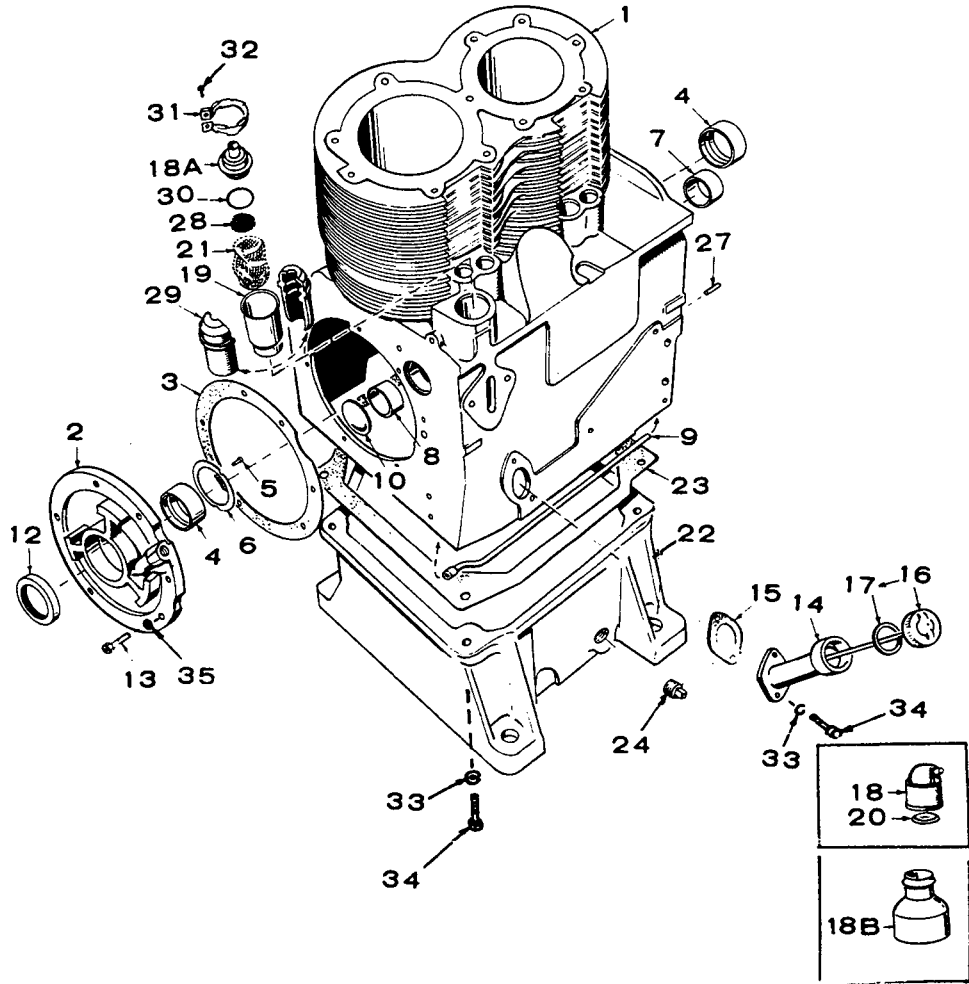
MODEL NO. AND SPECIFICATION	NUMBER OF CYLINDERS	QUANTITY USED COLUMN	MODEL NO. AND SPECIFICATION	NUMBER OF CYLINDERS	QUANTITY USED COLUMN
JB-S/*	2	B	JC-S/*	4	C
JB-MF/*£	2	B	JC-MF/*£	4	C
JB-MS/*	2	B	JC-MS/*	4	C

* - The Specification Letter advances (A to B, B to C, etc.) with manufacturing changes.
 The Specification Number identifies optional equipment on special models.

£ - MF Models have optional clutch.

NOTE: JB engines were formerly known as J60 and JC engines were J120.

CRANKCASE AND OIL BASE GROUP



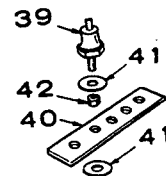
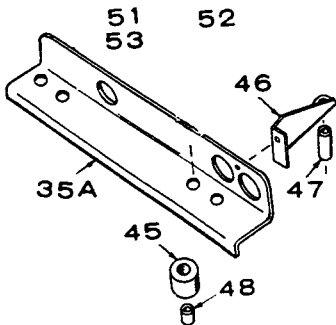
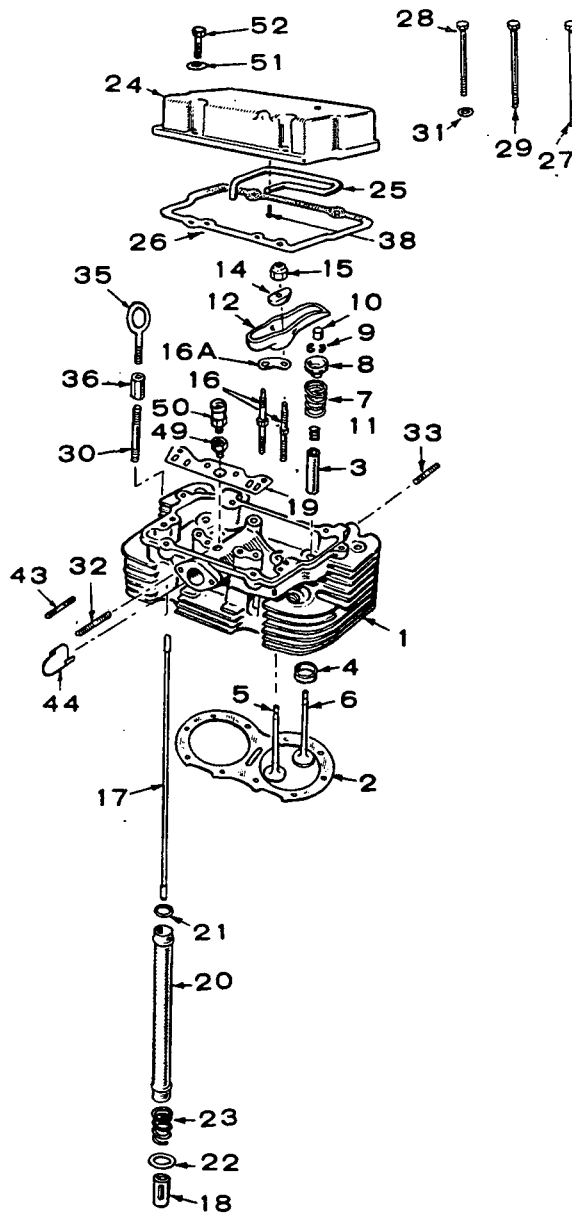
BestManuals.net

REF. NO.	PART NO.	QTY.		PART DESCRIPTION
		B	C	
1	110-1324	1		Block Assembly, Cylinder - Includes Parts Marked *
1	110-1329		1	Block Assembly, Cylinder - Includes Parts Marked * (Manual Start)
1	110-1328		1	Block Assembly, Cylinder - Includes Parts Marked * (Electrical Start)
2	101-0337	1	1	*Plate, Bearing (Less Bearing and Pins)
3	101-0386	1	1	Gasket and Shim Kit, Rear Bearing Plate
4	BEARING, PRECISION, MAIN - FRONT OR REAR			
	101-0359	2	2	*Standard
	101-0359-02	2	2	.002" Undersize
	101-0359-10	2	2	.010" Undersize
	101-0359-20	2	2	.020" Undersize
	101-0359-30	2	2	.030" Undersize
4A	BEARING HALF, PRECISION, MAIN - CENTER			
	101-0361		2	*Standard
	101-0361-02		2	.002" Undersize
	101-0361-10		2	.010" Undersize
	101-0361-20		2	.020" Undersize
	101-0361-30		2	.030" Undersize
4B	101-0342		2	*Bolt, Center Main Bearing Housing
4C	516-0149		2	*Pin, Center Main Bearing Housing
5	516-0072	4	4	*Pin, Crankshaft Thrust Washer
6	104-0420	2	2	*Washer, Crankshaft Thrust
7	101-0363	1	1	*Bearing, Precision Camshaft - Front - Standard Size Only
8	101-0365	1	1	*Bearing, Precision Camshaft, Rear - Standard Size Only
8A	101-0364		1	*Bearing, Precision Camshaft, Center - Standard Size Only
9	120-0553	1		*Tube, Crankcase Oil
9	120-0586	1	1	*Tube, Crankcase Oil - Front
9	120-0585	1	1	*Tube, Crankcase Oil - Rear
10	517-0053	1	1	*Plug, Camshaft Opening
12	509-0086	1	1	Seal, Oil, Crankshaft Rear
13	805-0019	6	6	*Bolt, Place - Rear Bearing Plate (3/8-16 x 1-1/4")
14	123-0649	1	1	Tube, Oil Fill
15	123-0667	1	1	Gasket, Oil Fill Tube Mounting
16	123-0651	1		Cap and Indicator

REF. NO.	PART NO.	QTY.		PART DESCRIPTION
		B	C	
16	123-0698		1	Cap and Indicator
17	123-0191	1	1	Gasket, Cap
18	CAP, BREATHER TUBE			
	123-0458	1		Spec A through D
	123-0787	1		Spec E through R
	123-0458		1	Spec A through E
	123-0787		1	Spec F through S
18A	123-1203	1		Cap and Valve Assembly, Breather - Begin Spec S
18B	123-1168		1	Cap, Breather - Begin Spec T
19	TUBE, BREATHER			
	123-0645	1		Spec A through R
	123-0952	1		Begin Spec S
19	123-0645		1	Tube, Breather - Spec A through S
20	123-0315	1		Valve, Breather - Spec A through R
21	123-1140	1		Baffle, Breather
21	123-1140		1	Baffle, Breather - Spec A through S
22	102-0448	1		Base, Oil
22	102-0477		1	Base, Oil
23	102-0451	1		Gasket, Base
23	102-0475		1	Gasket, Base
24	505-0056	1	1	Plug
27	516-0141	2	2	*Pin, Gear Cover Locating
28	123-1153	1		Screen, Breather - Begin Spec S
29	123-0998	2		Insulator (Half), Breather - Begin Spec S
30	509-0117	1		Seal, "O" Ring - Breather - Begin Spec S
31	518-0268	1		Clamp, Breather Insulator - Begin Spec S
32	809-0035	1		Screw, Breather Clamp - Begin Spec S
33	WASHER, LOCK			
	850-0045	2		Oil Fill Tube Mounting
	850-0055	4	10	Oil Base Mounting
34	SCREW, HEX CAP			
	800-0021	2	2	Oil Fill Tube Mounting
	800-0073	4		Oil Base Mounting
	800-0072		10	Oil Base Mounting
35	526-0245	6	6	Washer, Flat - Rear Bearing Plate Mounting
36	102-0588	1		Heater, Oil Base (Optional)

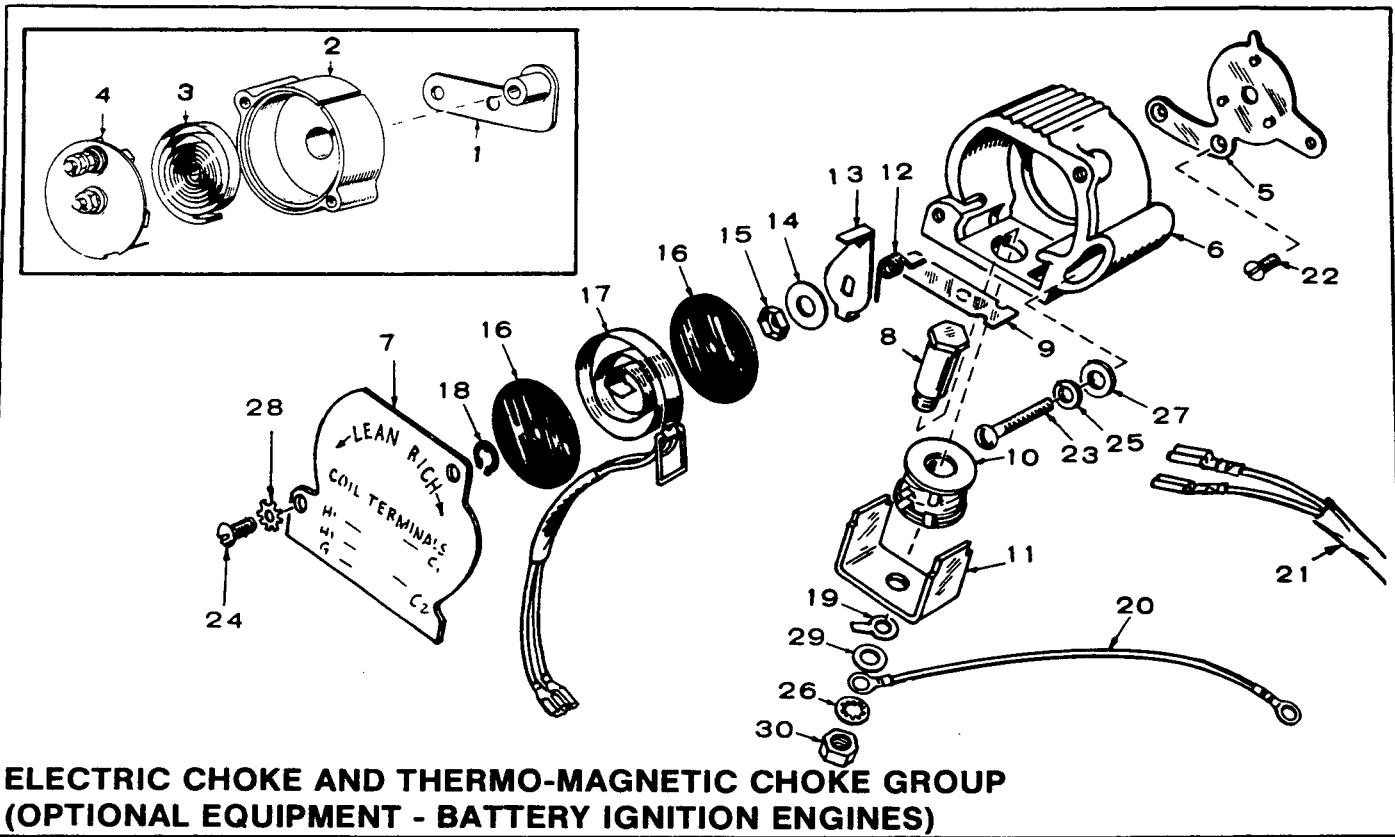
* - Included in Cylinder Block Assembly.

CYLINDER HEAD, VALVE AND ROCKER GROUP



REF. NO.	PART NO.	QTY.		PART DESCRIPTION
		B	C	
1	HEAD, CYLINDER			
	110-1212	1	2	Gasoline Engines
	110-1440	1	2	Gas & Gas-Gasoline Engines
2	110-1223	1	2	Gasket, Head
3	GUIDE, VALVE			
				Intake and Exhaust, Gasoline Engines
	110-1501	4	8	Standard
	110-1501-01	4	8	.001" Oversize
	110-1501-05	4	8	Intake, Gas and Gas-Gasoline Engines
				Standard
	110-1501	2	4	Standard
	110-1501-01	2	4	.001" Oversize
	110-1501-05	2	4	.005" Oversize
				Exhaust, Gas and Gas-Gasoline Engines
	110-1392	2	4	Standard
	110-1392-01	2	4	.001" Oversize
	110-1392-05	2	4	.005" Oversize
4	INSERT, VALVE SEAT			
				Intake, Gasoline Engines
	110-1214	2	4	Standard
	110-1214-02	2	4	.002" Oversize
	110-1214-05	2	4	.005" Oversize
	110-1214-10	2	4	.010" Oversize
	110-1214-25	2	4	.025" Oversize
				Intake, Stellite, Gas-Gasoline Engines
	110-1287	2	4	Standard
	110-1287-02	2	4	.002" Oversize
	110-1287-05	2	4	.005" Oversize
	110-1287-10	2	4	.010" Oversize
	110-1287-25	2	4	.025" Oversize
				Exhaust
	110-1215	2	4	Standard
	110-1215-02	2	4	.002" Oversize
	110-1215-05	2	4	.005" Oversize
	110-1215-10	2	4	.010" Oversize
	110-1215-25	2	4	.025" Oversize
5	VALVE, INTAKE			
	110-1218	2	4	Gasoline Engines
	110-1286	2	4	Gas & Gasoline Engines
6	110-1219	2	4	Valve, Exhaust, Stellite
7	110-1221	4	8	Spring, Valve
8	110-1220	4	8	Retainer, Valve Spring
9	110-0858	8	16	Lock, Valve Spring Retainer
10	110-0859	4	8	Cap, Valve Stem
11	509-0090	2	4	Seal, Oil - Intake Valve, Includes Retainer Rings
12	ARM, ROCKER			
	115-0128	2	4	Exhaust
	115-0129	2	4	Intake
14	115-0127	4	8	Ball, Rocker Arm
15	115-0150	4	8	Locknut, Rocker Arm
16	115-0189	2	4	Stud Set, Rocker Arm (2 Studs and Lock)
16A	115-0184	2	4	Lock, Stud
17	115-0145	4	8	Rod, Valve Push (Aluminum)
18	TAPPET, VALVE			
	115-0132	4	8	Spec A through O
	115-0195	4	8	Begin Spec P
19	115-0196	1	2	Guide, Push Rod
20	115-0137	4	8	Shield, Push Rod
21	509-0084	8	16	Seal, Push Rod Shield
22	115-0155	8	16	Washer, Spring Retaining

REF. NO.	PART NO.	QTY.		PART DESCRIPTION
		B	C	
23	115-0146	4	8	Spring, Shield Retainer
24	COVER, ROCKER			
	115-0134	1	2	Gasoline Engines (Less Oil Line)
	115-0173	1	2	Gas and Gas-Gasoline Engines (With Oil Line)
25	120-0628	1	2	Line, Oil, Rocker Cover - Gasoline Engines Only
26	115-0130	1	2	Gasket, Rocker Cover
27	110-1225	5	10	Screw (3/8-16 x 4-3/4") - Cylinder Head
28	110-0815	4	8	Screw (3/8-16 x 2"), Cylinder Head
29	110-1282	2	4	Screw (3/8-16 x 4"), Cylinder Head
30	520-0626	1	2	Stud, Cylinder Head (Only With Eyebolt and Extension Nut)
31	526-0174	6	12	Washer, Cylinder Head
32	520-0526	2	2	Stud, Carburetor
33	520-0608	4	8	Stud, Exhaust Manifold
35		1		Bolt, Lifting (Order 403-0707)
35A	403-0707	1		Bracket, Lifting - Includes Hardware
35A	403-0690	1		Bracket, Lifting
36	110-1304	1		Nut, Extension (Only on Models with Lifting Eye)
36	403-0620	2		Nut, Extension - Spec A through H
37		1		Bar Assembly, Lifting - Spec A through H Order 403-0690, (2) 800-0091 and (2) 850-0060
38	809-0042	1	2	Screw, Oil Line, Rocker Cover
39	309-0196	1	1	Switch, High Air Temperature (Optional)
40	309-0195	1	1	Bracket, High Air Temperature Switch (Optional)
41	508-0126	2	2	Washer, Insulator, Switch Mounting (Optional)
42	508-0127	1	1	Insulator, Sleeving - Air Temperature Switch (Optional)
43	520-0338	4		Stud, Intake Manifold
44	110-1312	2		Baffle, Fuel Distribution
45	402-0361	2		Cushion, Vibration (Not Used on Early Models)
46	403-0890	1		Brace, Lifting Bracket (Not Used on Early Models)
47	403-0826	1		Spacer, Lifting Bracket (Not Used on Early Models)
48	402-0362	2		Bushing, Spacer (Not Used on Early Models)
49	123-1169	2		Adapter, PCV Valve
50	123-1170	2		Valve, PCV (Positive Crankcase Ventilator)
51	WASHER, LOCK			
	850-0045	4	8	Rocker Cover Mounting
	850-0060	1		Lifting Bracket Mounting
52	SCREW, HEX CAP			
	800-0030	4	8	Rocker Cover Mounting
	800-0091	1		Lifting Bracket Mounting
	800-0094	2		Lifting Bracket Mounting
53	526-0100	2		Washer, Flat - Lifting Bracket Mounting

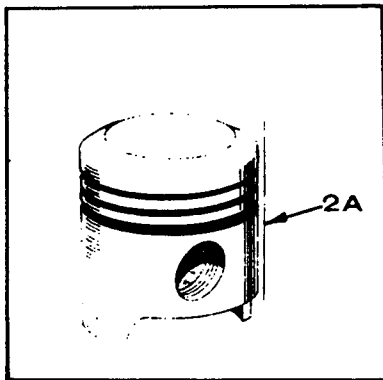
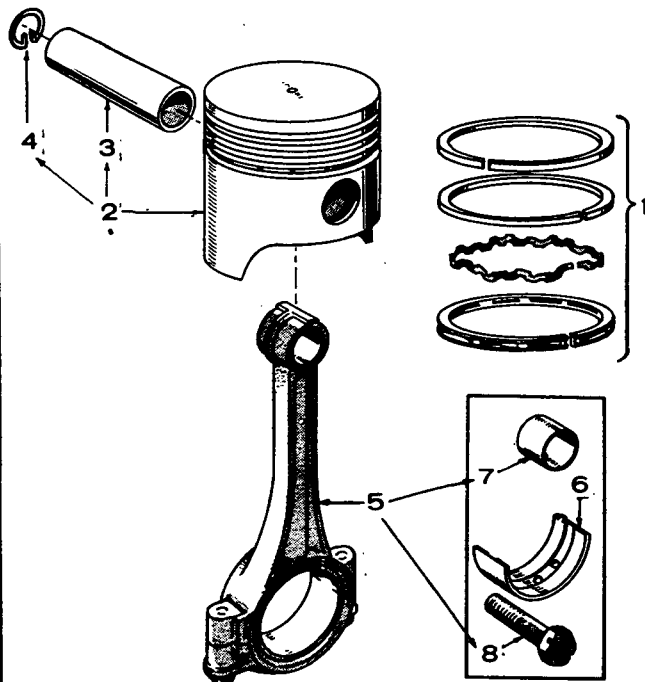


**ELECTRIC CHOKE AND THERMO-MAGNETIC CHOKE GROUP
(OPTIONAL EQUIPMENT - BATTERY IGNITION ENGINES)**

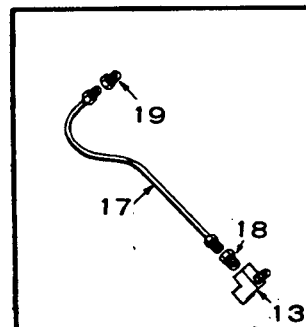
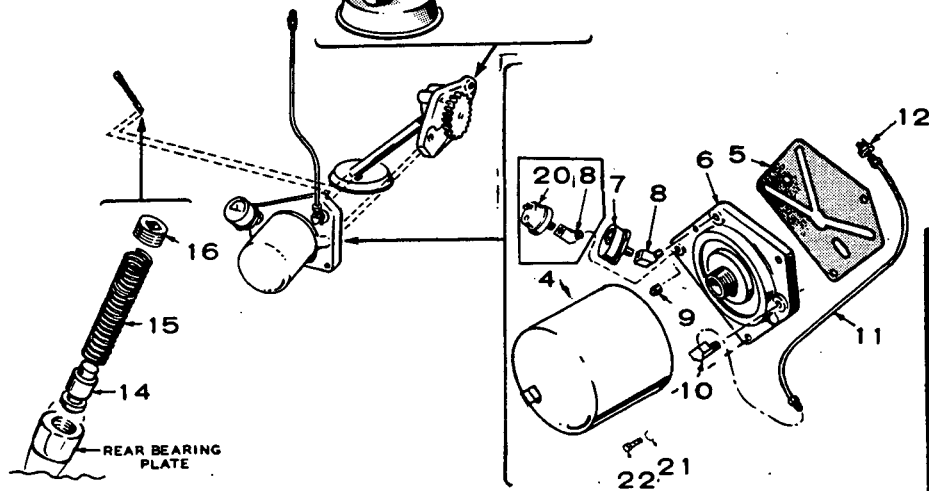
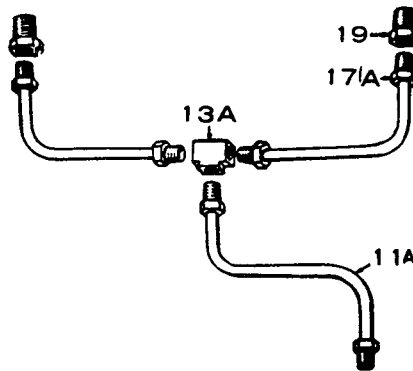
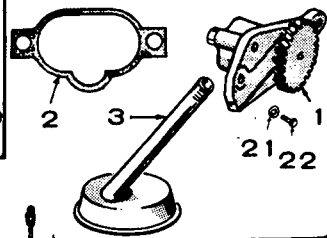
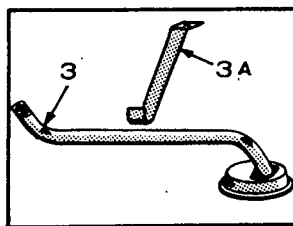
REF. NO.	PART NO.	QTY.		PART DESCRIPTION	REF. NO.	PART NO.	QTY.		PART DESCRIPTION
		B	C				B	C	
1	153-0315	1	1	Adapter, Electric Choke	18	518-0129	1	1	Ring, Retaining
2	153-0324	1	1	Bracket, Electric Choke Mounting	19	332-0876	1	1	Terminal, Ground
3	153-0321	1	1	Element, Electric Choke	20	LEAD			
4	153-0325	1	1	Cover Assembly, Electric Choke	336-1550		1	1	Ground
5	153-0385	1	1	Plate, Choke Mounting	336-1551		1	1	Choke to Ignition Coil
6	153-0386	1	1	Body	338-0332		1	1	Harness, Choke
7	153-0389	1	1	Cover	815-0161	2	2	2	Late Models (10-32 x 3/8")
8	153-0391	1	1	Core, Solenoid	815-0266	2	2	2	Early Models (8-32 x 3/8")
9	153-0395	1	1	Armature	813-0107	1	1	1	Screw, Round Head - Choke Body Mounting (10-32 x 1-1/4")
10	307-0801	1	1	Coil Solenoid Assembly	24	812-0046	2	2	Screw, Round Head - Choke Cover Mounting (8-32 x 5/16")
11	153-0392	1	1	Frame, Solenoid	25	526-0008	1	1	Washer, Flat - Choke Body Mounting
12	SPRING				26	526-0022	1	1	Washer, Flat - Ground Terminal
	153-0387	1	1	Spec A through R	27	850-0030	1	1	Washer, Lock - Choke Body Mounting
	153-0425	1	1	Begin Spec S	28	854-0007	2	2	Washer, Shakeproof - Choke Cover Mounting
13	153-0390	1	1	Lever, Thermostat	29	854-0017	1	1	Washer, Shakeproof - Ground Terminal
14	526-0018	1	1	Washer (17/64" I.D. x 5/8" O.D. x 1/16")	30	862-0015	1	1	Nut, Hex - Ground Terminal (5/16-18)
15	870-0134	1	1	Palnut (1/4-20)	153-0430		1	1	Choke Kit - Complete - For Engine Originally Equipped with this type Choke
16	153-0399	2	2	Insulator					
17	HEATER ASSEMBLY AND BI METAL								
	153-0400	1	1	Spec A through R (NOTE: See next entry)					
	153-0422	1	1	Begin Spec S (NOTE: Recommended for Engines with this type of Choke Beginning Spec A through R. Also order 153-0425 Spring for These Engines)					

NOTE: Electric Choke Items 1 through 4 used on 2 cylinder engines Spec A through E and 4 cylinder engines Spec A through F. The Thermo-Magnetic Choke used on 2 Cylinder engines begins with Spec F and for 4 cylinder engines Spec G.

PISTON AND CONNECTING ROD GROUP



REF. NO.	PART NO.	QTY.		PART DESCRIPTION
		B	C	
1 RING SET				
	113-0089	2		Gasoline & Gas-Gasoline Standard
	113-0089-10	2		.010" Oversize
	113-0089-20	2		.020" Oversize
	113-0089-30	2		.030" Oversize
				Gas Only and LPG - Spec A through R
	113-0089	2		Standard
	113-0089-10	2		.010" Oversize
	113-0089-20	2		.020" Oversize
	113-0089-30	2		.030" Oversize
				Gas Only and LPG - Begin Spec S
	113-0107	2		Standard
	113-0107-10	2		.010" Oversize
	113-0107-20	2		.020" Oversize
	113-0107-30	2		.030" Oversize
				All Models
	113-0107	4		Standard
	113-0107-10	4		.010" Oversize
	113-0107-20	4		.020" Oversize
	113-0107-30	4		.030" Oversize
				Chrome Plated - Optional
	113-0111	2	4	Standard
	113-0111-10	2	4	.010" Oversize
	113-0111-20	2	4	.020" Oversize
	113-0111-30	2	4	.030" Oversize
2 PISTON & PIN (Includes Retaining Rings)				
				Gasoline - Gas-Gasoline - LPG - Natural Gas
	112-0092	2	4	Standard
	112-0092-10	2	4	.010" Oversize
	112-0092-20	2	4	.020" Oversize
	112-0092-30	2	4	.030" Oversize
2A PISTON & PIN (Includes Retaining Ring)				
				Natural Gas Only - High Compression - Optional
	112-0106	2	4	Standard
	112-0106-10	2	4	.010" Oversize
	112-0106-20	2	4	.020" Oversize
	112-0106-30	2	4	.030" Oversize
3 PIN, PISTON				
	112-0086	2	4	Standard
4 112-0085 4 8 Ring, Retaining, Pin				
5 114-0163 2 4 Rod Assembly, Connecting (Forged)				
6 BEARING HALF, CONNECTING ROD				
	114-0164	4	8	Standard
	114-0164-02	4	8	.002" Undersize
	114-0164-10	4	8	.010" Undersize
	114-0164-20	4	8	.020" Undersize
	114-0164-30	4	8	.030" Undersize
7 114-0170 4 8 Bushing, Half - Piston Pin, Connecting Rod - Semi-finished				
8 805-0012 4 8 Bolt (5/16-24 x 1-13/16")				



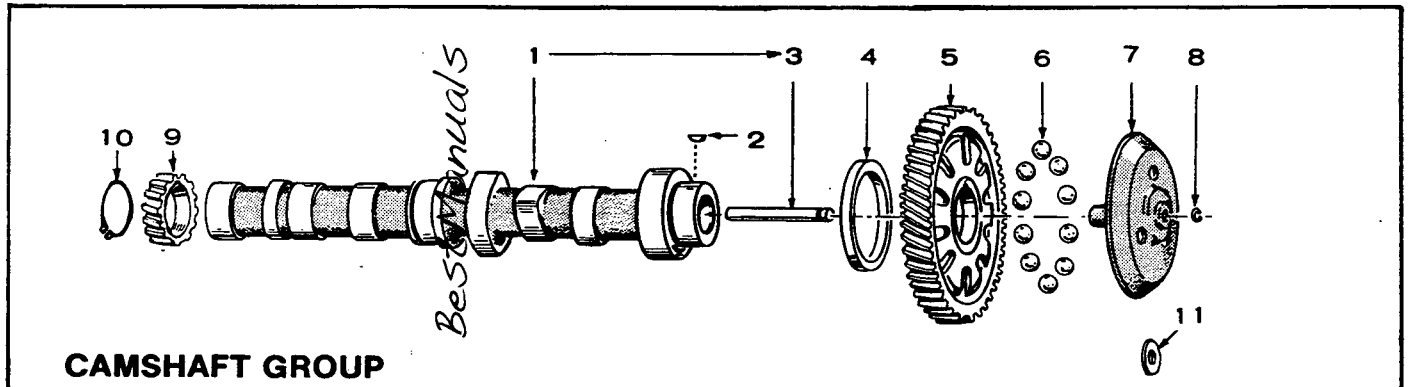
OIL SYSTEM GROUP

REF. NO.	PART NO.	QTY.		PART DESCRIPTION
		B	C	
1	120-0547	1	1	Pump Assembly, Oil
2	120-0580	1	1	Gasket Kit, Pump
3	CUP ASSEMBLY, OIL INTAKE			
	120-0551	1		All
	120-0551		1	Spec A through D
	120-0601		1	Begin Spec E
3A	120-0602		1	Bracket, Intake Cup - Begin Spec E
4	122-0185	1	1	Filter (3-1/2" Long)
4	122-0193	1	1	Filter (5-1/2" Long) - Optional
5	122-0188	1	1	Gasket, Filter Adapter
6	122-0182	1	1	Adapter Assembly, Filter
7	193-0006	1	1	Gauge, Oil Pressure
8	502-0053	1	1	Elbow, Street 45°, (1) Oil Gauge, Also (1) used to Mount Optional LOPKO Switch
9	505-0057	1	1	Plug, Pipe 1/8", Adapter
10	ELBOW, OIL LINE TO FILTER ADAPTER			
	502-0019	1	1	Gasoline Engines - Spec A through O
	502-0037	1	1	Gasoline Engines - Begin Spec P
	502-0019	1	1	Gas & Gas-Gasoline Engines - Prior to Serial #698178
	502-0037	1	1	Gas & Gas-Gasoline Engines - Begin Serial #698178
11	LINE, FILTER ADAPTER TO CYLINDER HEAD			
	120-0562	1	1	Gasoline Engines - Spec A through O
	120-0672	1		Gasoline Engines - Begin Spec P

REF. NO.	PART NO.	QTY.		PART DESCRIPTION
		B	C	
	120-0637		1	Gasoline Engines - Spec P through S
	120-0562	1	1	Gas & Gas-Gasoline Engines - Prior to Serial #698178
	120-0672	1		Gas & Gas-Gasoline Engines - Begin Serial #698178
	120-0606	1		Gas & Gas-Gasoline Engines - Begin Serial #698178
11A	120-0707	1		Line, Adapter to Cylinder Head Tee - Begin Spec T
12	CONNECTOR, INVERTED MALE - ADAPTER OIL LINE			
	502-0235	1		Gasoline Engines - Spec A through O (Restricted)
	502-0030	1		Gasoline Engines - Spec A through O
	502-0274	1		Gasoline Engines - Begin Spec P (Restricted)
	502-0097	1		Gasoline Engines - Spec P through S
	502-0235	1		Gas & Gas-Gasoline Engines - Prior to Serial #698178 (Restricted)
	502-0030	1		Gas & Gas-Gasoline Engines - Prior to Serial #698178
	502-0274	1		Gas & Gas-Gasoline Engines - Begin Serial #698178 (Restricted)
	502-0097	1		Gas & Gas-Gasoline Engines - Begin Serial #698178 Spec A through S

REF. NO.	PART NO.	QTY.		PART DESCRIPTION
		B	C	
13	502-0242		1	Tee, Restricted - Front Cylinder Head - Spec A through S
13A	502-0373		1	Tee, Cylinder Head - Begin Spec T
14	120-0539	1	1	Valve, By-Pass
15	120-0555	1	1	Spring, By-Pass
16	505-0274	1	1	Plug, Pipe 1/8", Counter-sunk Oil By-Pass
17	LINE, TEE TO REAR CYLINDER HEAD			
	120-0575		1	Gasoline Engines - Spec A through O
	120-0635		1	Gasoline Engines - Spec P through S
	120-0575		1	Gas & Gas-Gasoline Engines - Prior to Serial #698178
	120-0635		1	Gas & Gas-Gasoline Engines - Begin Serial #698178 Spec A through S
17A	120-0695	2		Line, Cylinder Head - Begin Spec T
18	502-0097		1	Connector, Inverted Male - Tee to Rear Cylinder Head Oil Line - Spec A thru S

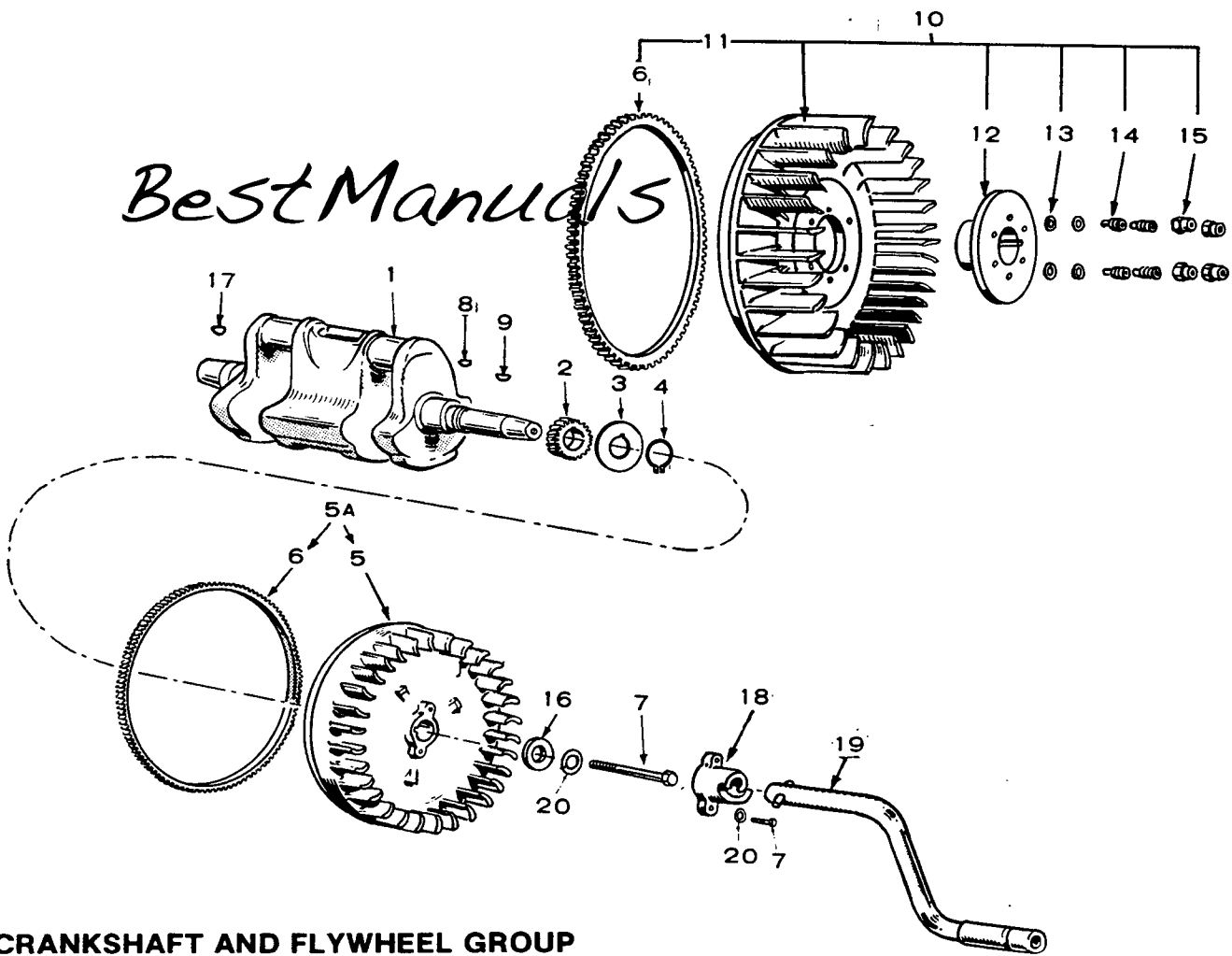
REF. NO.	PART NO.	QTY.		PART DESCRIPTION
		B	C	
19	CONNECTOR, INVERTED MALE - REAR CYLINDER HEAD			
	502-0097		1	Gasoline Engines - Spec A through O
	502-0274		1	Gasoline Engines - Spec P through S (Restricted)
	502-0394		2	All - Begin Spec T (Restricted)
	502-0097		1	Gas & Gas-Gasoline Engines - Prior to Serial #698178
	502-0274		1	Gas & Gas-Gasoline Engines - Begin Serial #698178 Spec A through S (Restricted)
20	309-0064	1	1	Switch, Low Oil Pressure (Optional)
	309-0169	1	1	Switch, Low Oil Pressure (Optional)
21	WASHER, LOCK			
	850-0045	2	2	Oil Pump Mounting
	850-0045	3	3	Oil Filter Adapter Mounting
22	SCREW, HEX CAP			
	800-0030	2	2	Oil Pump Mounting
	800-0028	3	3	Oil Filter Adapter Mounting



REF. NO.	PART NO.	QTY.		PART DESCRIPTION
		B	C	
1	CAMSHAFT, INCLUDES CENTER PIN			
	105-0219		1	Spec A through O
	105-0272		1	Begin Spec P
	105-0240		1	Spec A through O
	105-0275		1	Begin Spec P
2	515-0001	2	2	Key, Camshaft Gear
2	515-0001		1	Key, Distributor Drive Gear - Battery Ignition
3	150-0075	1	1	Pin, Camshaft Center
4	105-0205	1	1	Washer, Camshaft Thrust
5	GEAR, CAMSHAFT - INCLUDES FLYBALL SPACER AND PLATE			
	205-0218		1	Begin Spec B
	105-0223		1	Spec A Only
	105-0218		1	All

REF. NO.	PART NO.	QTY.		PART DESCRIPTION
		B	C	
6	BALL, FLY - GOVERNOR			
	510-0046		12	Spec A Only
	510-0046		10	Begin Spec B
	510-0046		10	All
7	CUP, GOVERNOR			
	150-0775		1	All
	150-0833		1	Spec A Only
	150-0857		1	Begin Spec B
8	150-0078	1	1	Ring Snap - Center Pin
9	166-0302	1	1	Gear, Distributor Drive - Battery Ignition
10	518-0195	1	1	Ring Snap, Drive Gear - Battery Ignition
11	150-0859	1	1	Washer, Thrust - Governor Yoke - Begin Spec B

Best Manuals

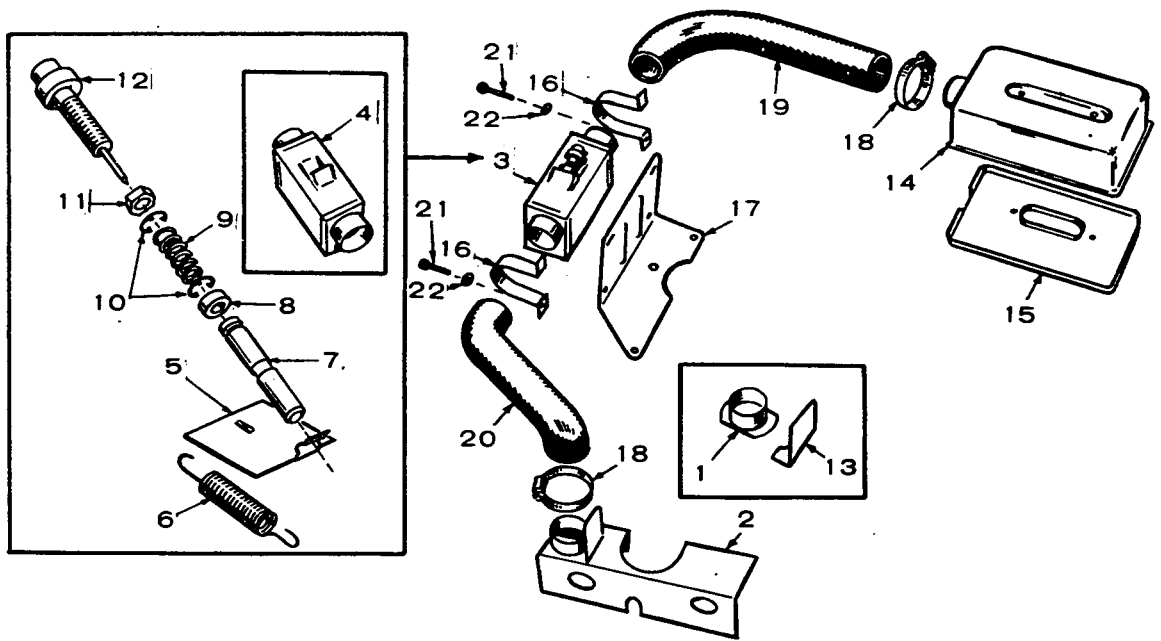


CRANKSHAFT AND FLYWHEEL GROUP

REF. NO.	PART NO.	QTY.		PART DESCRIPTION
		B	C	
1	CRANKSHAFT			
	104-0438	1		Standard Engines
	104-0439	1		Engine with Clutch
		1		Engine with Auto Cycle Starter
	104-0458		1	Standard Engine
	104-0460		1	Engine with Clutch
			1	Engine with Auto Cycle Starter
2	104-0418	1	1	Gear
3	104-0416	1	1	Washer, Retainer
4	518-0188	1	1	Ring, Lock
5	FLYWHEEL			
	160-0692	1		Magneto Ignition, Manual Start and Auto Cycle Start - Standard
	104-0473	1		Battery Ignition, Auto Cycle Start - Optional
5A	FLYWHEEL, INCLUDES RING GEAR			
	160-0877	1		Magneto Ignition - Optional
	104-0472	1		Battery Ignition - Standard
	191-0403	1		Battery Ignition (Machined for Charging Alternator Rotor) - Optional
6	104-0423	1	1	Gear, Ring
7	HEX CAP			
	800-0500	1	1	Flywheel Mounting
	800-0050	2	2	Crankdog Mounting
8	515-0001	1	1	Key, Gear
9	515-0153	1	1	Key, Flywheel to Crankshaft

REF. NO.	PART NO.	QTY.		PART DESCRIPTION
		B	C	
10	FLYWHEEL, INCLUDES HUB ASSEMBLY			
	134-1446	1		Magneto Ignition, Manual Start and Auto Cycle Start - Optional
	134-1446	1		Battery Ignition, Auto Cycle Start - Optional
11	FLYWHEEL, INCLUDES RING GEAR AND HUB ASSEMBLY			
	134-1406	1		Battery Ignition - Standard
	134-1556	1		Battery Ignition (Machined for Charging Alternator Rotor) - Optional
12	134-1401	1		Hub, Flywheel
13	526-0187	4		Washer, Special, Hub to Flywheel
14	104-0543	4		Spacer and Washer Assembly, Hub to Flywheel
15	115-0150	4		Nut, Stover (3/8-24) - Hub to Flywheel
16	526-0185	1		Washer, Flywheel Mounting
17	515-0003	1		Key, Crankshaft, Power Take-Off
18	104-0429	1	1	Crankdog, Manual Start Engines
19	192-0350	1		Crank, Hand - Manual Start Engines
19	192-0268	1		Crank, Hand - Manual Start Engines
20	WASHER, LOCK			
	850-0055	1	1	Flywheel Mounting
	850-0050	2	2	Crankdog Mounting

* - Refer to factory giving complete Model, Spec, and Serial Number.

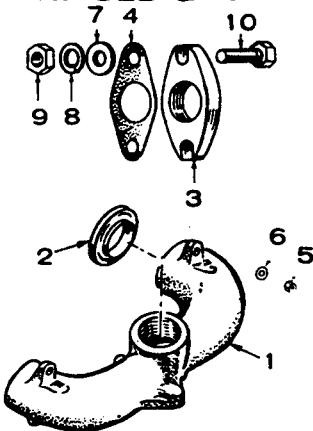


CARBURETOR AIR HEATER GROUP (OPTIONAL EQUIPMENT) - LATE MODELS

REF. NO.	PART NO.	QTY.		PART DESCRIPTION	REF. NO.	PART NO.	QTY.		PART DESCRIPTION
		B	C				B	C	
	KIT, AIR HEATER								
	140-0890	1		Engines with Duct or with Duct and Shutter	7	140-0784	1	1	*Plunger, Temperature Control
	140-0893		1	Engines with Duct or with Duct and Shutter	8	140-0808	1	1	*Spacer, Vernatherm
	140-0891	1		Engines without Duct or Shutter	9	140-0787	1	1	*Spring, Vernatherm
	140-0894		1	Engines without Duct or Shutter	10	518-0205	1	1	*Ring, Retaining
1	133-0187	1	1	Adapter, Hose - Air Outlet - Engines with Duct or Duct and Shutter	11	870-0195	1	1	*Nut, Locking - Vernatherm
2	133-0191		1	Plenum, Manifold Heater - Engines without Duct or Shutters	12	309-0181	1	1	*Vernatherm, Temp. Control
2	133-0192		1	Plenum, Manifold Heater - Engines without Duct or Shutters	13	140-0789	1	1	Shield, Air Outlet Hose - Engines with Duct or Duct and Shutter
3	140-0788	1	1	Control Assembly, Temperature - Includes Parts Marked *	14	140-0790	1	1	Cover, Air Cleaner
4	140-0785	1	1	*Housing, Temperature Control	15	140-0791	1	1	Pan, Air Cleaner
5	140-0782	1	1	*Shutter, Temperature Control	16	140-0821	2	2	Clamp, Temperature Control Support
6	140-0786	1	1	*Spring, Shutter Control	17	140-0822	1	1	Support, Temperature Control
					18	503-0311	2	2	Clamp, Hose
					19	503-0474	1	1	Hose, Control to Air Cleaner
					19	503-0475	1	1	Hose, Control to Air Cleaner
					20	503-0476	1	1	Hose, Adapter (or Plenum) to Control
					21	813-0105	2	2	Screw, Round Head - 10-32 x 1
					22	854-0010	2	2	Washer, Lock

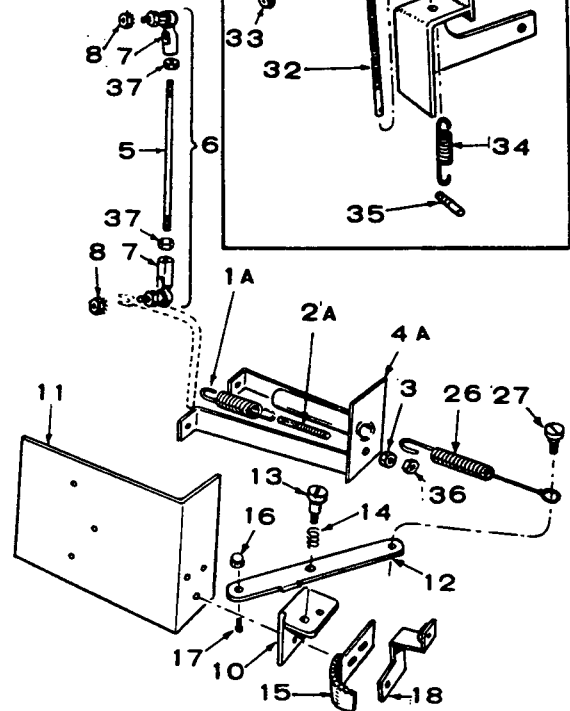
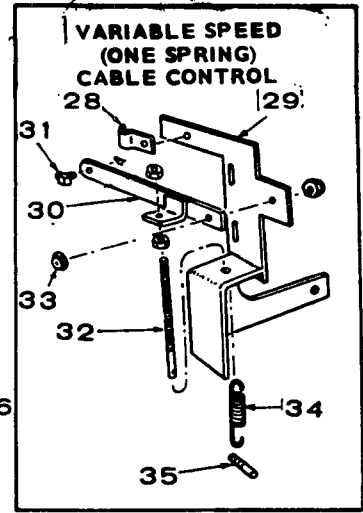
* - Included in Control Assembly.

MANIFOLD GROUP

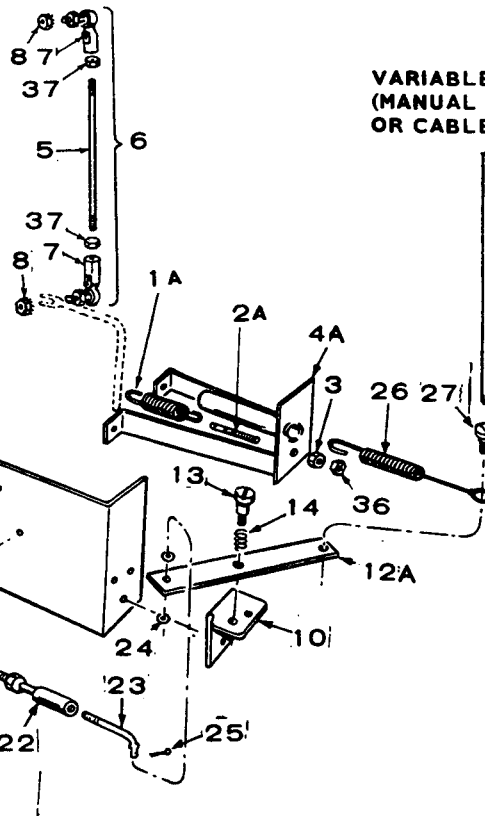
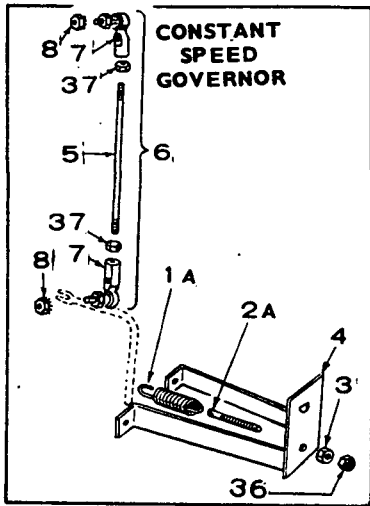
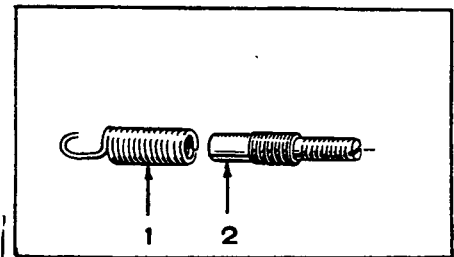


REF. NO.	PART NO.	QTY.		PART DESCRIPTION
		B	C	
1	154-0633	1		Manifold, Exhaust
1	154-0714		1	Manifold, Exhaust
2	154-0463	2	4	Gasket, Exhaust Manifold to Head
3	155-0782		1	Flange, Exhaust Manifold Outlet
4	154-0738		1	Gasket, Exhaust Outlet
5	110-0445	4	4	Nut, Hex, Manifold Mounting
6	526-0045	4	4	Washer, Flat - Manifold Mounting
7	526-0127	2	2	Washer (3/8")
8	850-0050	2	2	Washer (3/8"), Lock
9	862-0003	2	2	Nut (3/8-16)
10	850-0054	2	2	Screw (3/8-16 x 2")

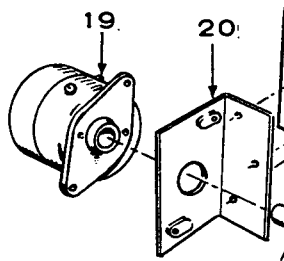
GOVERNOR AND THROTTLE CONTROL GROUP



VARIABLE SPEED GOVERNOR (MANUAL CONTROL AT ENGINE OR CABLE CONTROL)

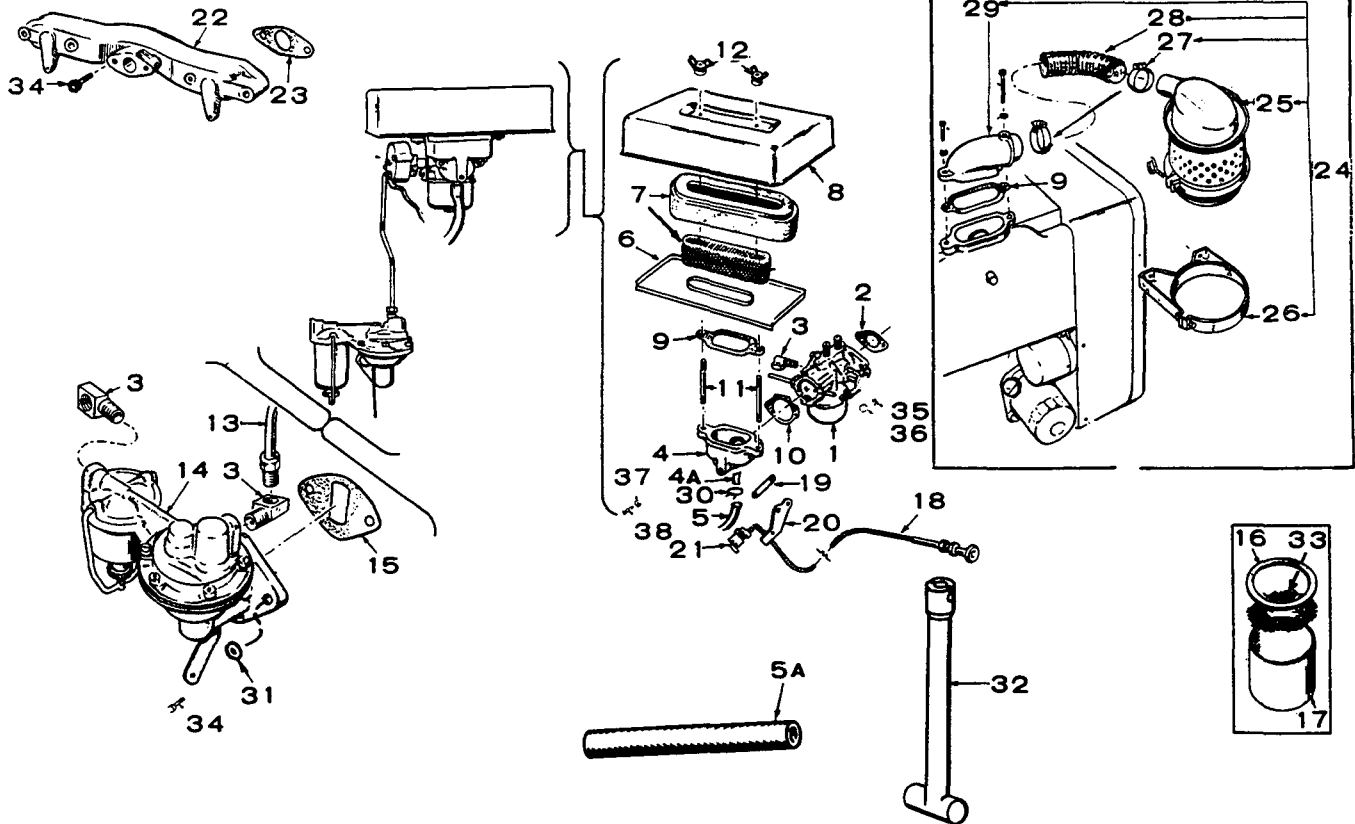


TWO SPEED GOVERNOR



REF. NO.	PART NO.	QTY.		PART DESCRIPTION
		B	C	
1	SPRING, GOVERNOR			
	150-0821	1		Spec A through Q
	150-0837		1	Spec A Only
	150-0861		1	Spec B through Q
1A	SPRING, GOVERNOR			
	150-1084	1		Begin Spec R
	150-1085		1	Begin Spec R
2	STUD, GOVERNOR ADJUSTING			
	150-0822	1		Spec A through Q
	150-0851		1	Spec A Only
	150-0863		1	Spec B through Q
2A	STUD, GOVERNOR ADJUSTING			
	150-1082	1		Begin Spec R
	150-1083		1	Begin Spec R
3	NUT, GOVERNOR ADJUSTING			
	104-0091	1	1	Spec A through Q
	862-0003	1	1	Begin Spec R
4	BRACKET ASSEMBLY, GOVERNOR - CONSTANT SPEED AND VARIABLE SPEED (One Spring) GOVERNOR			
	150-0813	1		Spec A through Q
	150-1108	1		Begin Spec R
	150-0815		1	Spec A through Q
	150-1109		1	Begin Spec R
4A	BRACKET ASSEMBLY - VARIABLE SPEED (Two Spring) AND TWO SPEED GOVERNOR - OPTIONAL EQUIPMENT			
	150-0912	1		Spec A through Q
	150-1106	1		Begin Spec R
	150-0913		1	Spec A through Q
	150-1111		1	Begin Spec R
5	ROD, GOVERNOR CONTROL			
	150-0964	1		Spec A through Q
	150-1075	1		Begin Spec R
	150-0841		1	Spec A through Q
	150-1069		1	Begin Spec R
6	LINKAGE ASSEMBLY, GOVERNOR			
	150-0965	1		Spec A through Q
	150-1076	1		Begin Spec R
	150-0849		1	Spec A through Q
	150-1070		1	Begin Spec R
7	JOINT, BALL			
	150-0974	2	1	Spec A through Q (Early 2 Cylinder Engines used 1 only)
	150-1081	2	2	Begin Spec R
8	870-0131	2	2	Nut, Keps - Ball Joint to Governor Arm
10	150-0916	1	1	Bracket, Control Arm - Variable Speed (2 Spring) & 2 Speed Governor - Optional Equipment
11	150-0917	1	1	Bracket, Governor Control Mounting - Variable Speed (2 Spring) and 2 Speed Governor - Optional Equipment
12	150-0908	1	1	Lever, Speed Control - Variable (2 Spring) Governor - Optional Equipment
12A	150-0904	1	1	Lever, Solenoid Control - 2 Speed Governor - Optional Equipment
13	150-0915	1	1	Screw, Speed Control Lever and Spring Mounting Variable Speed (2 Spring) and 2 Speed Governor - Optional Equipment
14	150-0907	1	1	Spring, Speed Control Lever, Tension, Variable Speed (2 Spring) and 2 Speed Governor - Optional Equipment
15	150-0914	1	1	Ratchet, Speed Control, Variable Speed (2 Spring) Governor (Manual Control at Engine) - Optional Equipment

REF. NO.	PART NO.	QTY.		PART DESCRIPTION
		B	C	
16	153-0014	1	1	Nut, Cable to Lever, Variable Speed (2 Spring) Governor (Manual Control with Cable) Optional Equipment
17	810-0074	1	1	Screw, Cable to Lever, Variable Speed (2 Spring) Governor (Manual Control with Cable) Optional Equipment
18	150-0978	1	1	Bracket, Stop, Variable Speed Governor - Optional Equipment
19	307-0628	1	1	Solenoid, Governor Control, Two Speed Governor - Optional Equipment
20	150-0906	1	1	Bracket, Solenoid Mounting, Two Speed Governor - Optional Equipment
21	150-0905	1	1	Plunger, Solenoid, Two Speed Governor - Optional Equipment
22	150-0925	1	1	Joint, Ball, Two Speed Governor - Optional Equipment
23	150-0923	1	1	Rod, Solenoid to Lever - Two Speed Governor - Optional Equipment
24	526-0116	2	2	Washer, Solenoid Rod - Two Speed Governor - Optional Equipment
25	516-0036	1	1	Key, Cotter (1/16 x 3/8") Solenoid Rod, Two Speed Governor - Optional Equipment
26	SPRING, GOVERNOR CONTROL, TWO SPEED - OPTIONAL EQUIPMENT			
	150-0919	1		Speed Range 1200 to 2400 rpm (1-1/4" Coil)
	150-0920	1		Speed Range 1200 to 1800 rpm or 1800 to 2500 rpm (2-3/32" Coil)
	150-0922	1		Speed Range 1200 to 1800 rpm (1-15/16" Coil)
	150-0921	1		Speed Range 1200 to 2400 rpm or 1800 to 2500 rpm (1-13/32" Coil)
27	150-0918	1	1	Screw, Spring to Lever, Variable (2 Spring) Speed & Two Speed Governor - Optional Equipment
28	150-0942	1	1	Clamp, Speed Control Cable - Variable Speed (1 Spring) Governor - Optional Equipment
29	150-0940	1	1	Bracket, Governor Spring & Variable Speed Arm - Variable Speed (1 Spring) Governor - Optional Equipment
30	150-0973	1	1	Arm and Bracket, Variable Speed (1 Spring) Governor - Optional Equipment
31	142-0113	1	1	Swivel, Variable Speed (1 Spring) Governor - Optional Equipment
32	150-0945	1	1	Stud, Speed Adjustment - Variable Speed (1 Spring) Governor - Optional Equipment
33	152-0041	1	1	Washer, Tension - Variable Speed (1 Spring) Governor - Optional Equipment
34	151-0206	1	1	Spring, Governor - Variable Speed (1 Spring) Governor - Optional Equipment
35	150-0900	1	1	Arm, Governor Spring Control - Variable Speed (1 Speed) Governor - Optional Equipment
36	870-0133	1	1	Painut, Governor Adjustment Locking
37	870-0188	2	2	Painut, Governor Link Locking



FUEL SYSTEM GROUP (GASOLINE)

REF. NO.	PART NO.	QTY.		PART DESCRIPTION
		B	C	
1	ε	CARBURETOR, GASOLINE - MANUAL START ENGINES		
	141-0763	1		Spec A through Q
	141-0693	1		Begin Spec R
	141-0756		1	Spec A through Q
	141-0686		1	Begin Spec R
1	ε	CARBURETOR, GASOLINE - ELECTRIC START ENGINES		
	141-0762	1		Spec A through Q
	141-0692	1		Begin Spec R
	141-0759		1	Spec A through Q
	141-0685		1	Begin Spec R
2	154-0733	1	1	Gasket, Carburetor Flange
3	ELBOW, INVERTED			
	502-0002	2	2	Fuel Pump Inlet and Outlet
	502-0065	1		Carburetor Inlet
	502-0002		1	Carburetor Inlet - Manual Start and Electric Start - Spec A through F
	502-0065		1	Electric Start - Begin Spec G
4	ADAPTER, AIR CLEANER (Includes Nylon Tube)			
	140-0647	1	1	Spec A through Q
	140-0933	1	1	Begin Spec R
4A	123-0732	1	1	Tube, Nylon
5	HOSE, BREATHER TO AIR CLEANER ADAPTER			
	503-0384	1		Spec A through D
	503-0395	1		Spec E through R
	503-0543	1		Begin Spec S
	503-0389		1	Spec A through E
	503-0416		1	Spec F through S
	503-0471		1	Begin Spec T
5A	503-0558	1		Insulator, Breather Hose - Begin Spec S

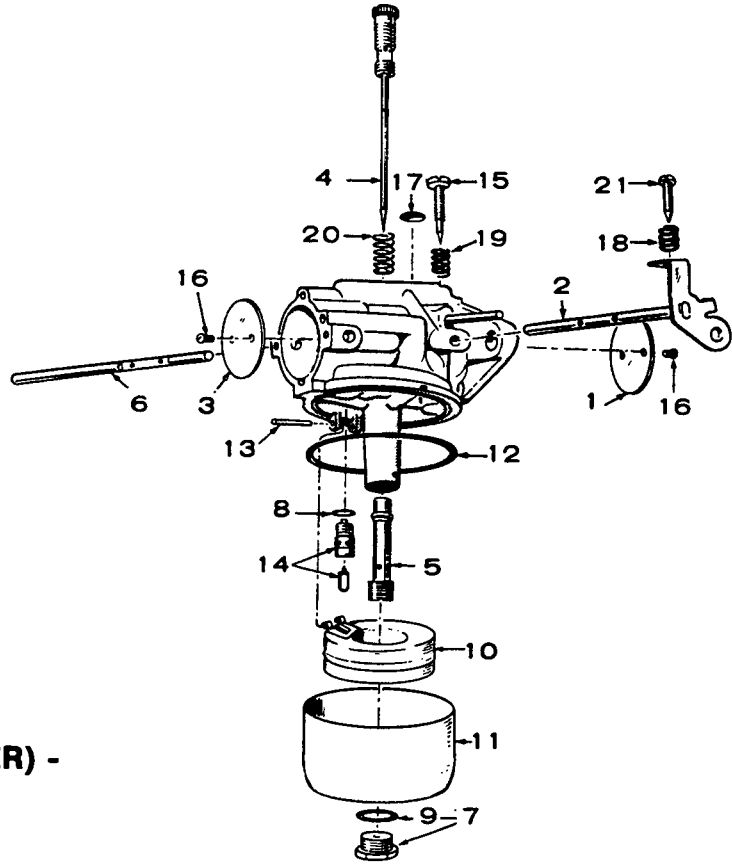
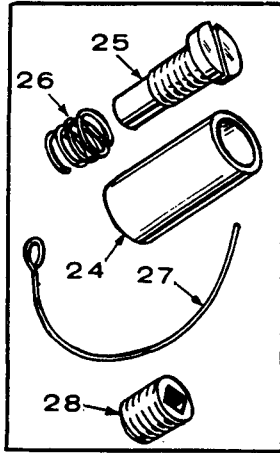
REF. NO.	PART NO.	QTY.		PART DESCRIPTION
		B	C	
6	140-0595	1	1	Pan, Air Cleaner
7	140-0636	1	1	Element and Retainer, Air Cleaner
8	140-0594	1	1	Cover, Air Cleaner
9	140-0584	1	1	Gasket, Air Cleaner
10	GASKET, ADAPTER TO CARBURETOR			
	140-0585	1	1	Spec A thru Q
	140-0921	1	1	Begin Spec R
11	520-0621	2	2	Stud, Air Cleaner
12	865-0020	2	2	Nut (Self Sealing) Air Cleaner
13	LINE, PUMP TO CARBURETOR			
	149-0739		1	Spec A through Q
	149-1095		1	Begin Spec R
	149-0744		1	Spec A through Q - Manual Start
	149-1016		1	Spec A through Q - Electric Start
	149-1094		1	Begin Spec R - Manual Start
	149-1099		1	Begin Spec R - Electric Start
14	PUMP, FUEL			
	149-0805	1	1	Manual Start Engine
	149-0803	1	1	Electric Start Engine
15	149-0792	1	1	Gasket, Fuel Pump Mounting
16	149-0517	1	1	Gasket, Fuel Pump Bowl
17	149-0116	1	1	Bowl, Fuel Pump
18	153-0328	1		Choke, Manual
	153-0332		1	Choke, Manual
19	153-0326	1	1	Arm, Manual Choke
20	153-0327	1	1	Bracket, Manual Choke
21	518-0176	1	1	Clip, Manual Choke Arm
22	MANIFOLD, INTAKE			
	154-0724	1		Spec A Only
	154-0749	1		Begin Spec B

REF. NO.	PART NO.	QTY.		PART DESCRIPTION
		B	C	
23	154-0733		2	Gasket, Intake Manifold
24	140-0677	1	1	Conversion Kit, Oil Bath Air Cleaner - Includes parts marked *
25	140-0500	1	1	*Cleaner, Air - Oil Bath - Optional Equipment
26	140-0519	1	1	*Band, Air Cleaner - Optional Equipment
27	503-0365	2	2	*Clamp, Air Cleaner Hose - Optional Equipment
28	503-0395	1	1	*Hose, Air Cleaner to Adapter - Optional Equipment
29	140-0645	1	1	*Adapter, Oil Bath Air Cleaner - Optional Equipment
30	503-0171	2	2	Clamp, Breather Hose
31	149-1307	2	2	Washer, Lock - Fuel Pump Mounting
32	141-0727	1	1	Rod, Carburetor Adjusting
33	149-0463	1	1	Screen, Fuel Pump
34	800-0027	2	2	Screw, Hex Cap - Fuel Pump Mounting

REF. NO.	PART NO.	QTY.		PART DESCRIPTION
		B	C	
35	854-0017	2	2	Washer, Shakeproof - Carburetor Mounting
36	868-0002	2	2	Nut, Carburetor Mounting
37	850-0030	2	2	Washer, Lock - Air Cleaner Adapter Mounting
38	813-0108	2	2	Screw, Air Cleaner Adapter Mounting
39	813-0098	2	2	Screw, Choke Mounting Mounting Bracket (10-32 x 3/8")
40	850-0030	2	2	Washer, Lock - Choke Mounting Bracket (#10)
41	870-0131	1	1	Nut, Kep (10-32)
42	502-0020	1	1	Elbow, Street Pipe
43	504-0007	1	1	Valve, Shut-off
	149-1048	1	1	Repair Kit, Fuel Pump (Includes Diaphragm Assembly, Valves and Gaskets)

* - Included in Optional 140-0677 Oil Bath Air Cleaner Conversion Kit.

£ - See Separate Group for Components and Service Kits.



CARBURETOR PARTS GROUP (CARTER) - SPEC A THROUGH Q

NOTE: See separate group for Zenith Carburetor parts used beginning Spec R.

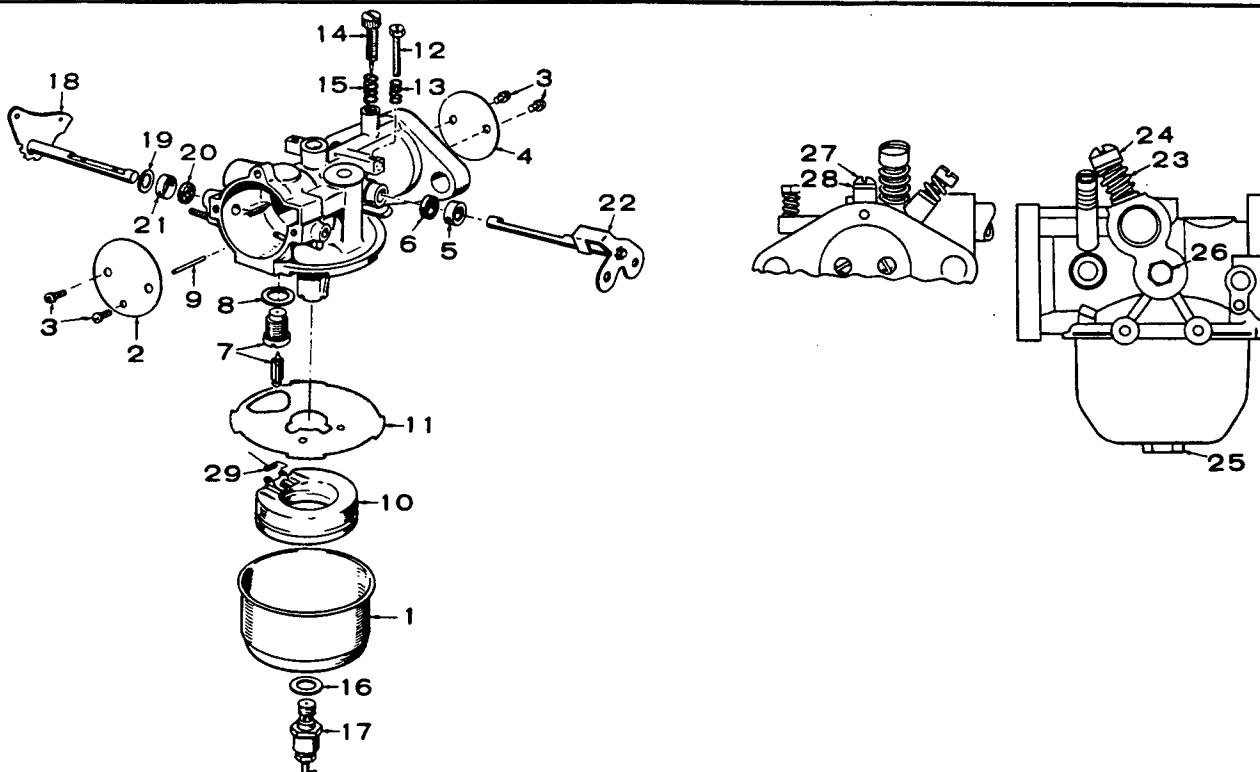
REF. NO.	PART NO.	QTY.		PART DESCRIPTION
		B	C	
CARBURETOR, GASOLINE (Zenith Replaces Carter Carburetor)				
	141-0763	1		Manual Choke
	141-0762	1		Electric Choke
	141-0756	1		Manual Choke
	141-0759	1		Electric Choke - Optional
CARBURETOR, GAS-GASOLINE - OPTIONAL				
	141-0761	1		Manual Choke
	141-0760	1		Electric Choke
	141-0755	1	1	Manual Choke
	141-0758	1	1	Electric Choke
	141-0764	1		Carburetor, Gas - Optional
	141-0757	1	1	Carburetor, Gas - Optional
REPAIR KIT, CARBURETOR - (Includes Parts Marked **)				
	143-0200	1		For Gasoline Carburetor - Spec A through D
	143-0298	1		For Gasoline Carburetor - Spec E through P
	143-0298	1		For Optional Gas-Gasoline Carburetor
	143-0241	1	1	Repair Kit, Carburetor - Includes Parts Marked ** (Not used for Gas Only Carburetor)
	143-0201	1	1	Gasket Kit, Carburetor (Includes Parts Marked *) (§**)
	141-0281	1	1	Gasket, Carburetor Flange (Illustrated in Fuel System Group) (*)
1	143-0202	1	1	Valve, Throttle
2 SHAFT AND LEVER, THROTTLE				
	143-0203	1		Standard
	143-0234	1		Spec B through P
	143-0203	1		Spec A Only

REF. NO.	PART NO.	QTY.		PART DESCRIPTION
		B	C	
3	143-0220	1	1	Valve, Choke
4**NEEDLE, IDLE JET AND HIGH SPEED ADJUSTING				
	143-0205	1		For Gasoline Carburetor Spec A through D (**)
	143-0295	1		For Gasoline Carburetor - Spec E through P (†)**
	143-0295	1		For Optional Gas-Gasoline Carburetor (†)
	143-0235	1	1	Needle, Idle Jet and High Speed Adjusting (Not used on Gas Carburetor) (§**)
5**NOZZLE				
	143-0206	1		For Gasoline Carburetor - Spec A through D
	143-0296	1		For Gasoline Carburetor - Spec E through P (†)
	143-0296	1		For Optional Gas-Gasoline Carburetor (†)
	143-0237	1	1	Nozzle (Not used on Gas Only Carburetor) (§**)
6 SHAFT, CHOKE				
				Electric Choke - (J60 - Spec A through E & J120 - Spec A through F)
	143-0207	1	1	Gasoline Carburetor
	143-0232	1	1	Gas-Gasoline Carburetor, Thermo-Magnetic Choke (J60 - Spec F through P and J120 - Spec G through P)
6	143-0221	1	1	Shaft and Lever, Choke - Manual Choke
	143-0315	1	1	Gasoline Carburetor
	143-0316	1	1	Gas-Gasoline Carburetor
7	143-0208	1	1	Screw and Gasket, Bowl

REF. NO.	PART NO.	QTY.		PART DESCRIPTION
		B	C	
8	143-0015	1	1	Gasket, Fuel Inlet Valve (*)
9	143-0209	1	1	Gasket, Bowl Screw (*)
10	FLOAT AND LEVER			
	143-0105	1		For Gasoline Carburetor - Spec A through D
	143-0297	1		For Gasoline Carburetor - Spec E through P
	143-0297	1		For Optional Gas-Gasoline Carburetor
	143-0105		1	Float and Lever (Not Used on Gas Only Carburetor)
11	143-0210	1	1	Bowl
12	143-0077	1	1	Gasket, Bowl Ring (*)
13	143-0212	1	1	Pin, Float, Lever (Not Used on Gas Only Carburetor) (§†**)
14	143-0341	1	1	Valve, Fuel Inlet (Not Used on Gas Only Carburetor) (§†**)
15	SCREW, IDLE ADJUSTMENT			
	143-0213	1		For Gasoline Carburetor (Spec A through D)
	143-0299	1		Spec E through P (Gasoline Carburetor)
	143-0213	1		Located 45° from Vertical (Gas-Gasoline Carburetors)
	143-0299	1		Located top of Carburetor (Gas-Gasoline Carburetors)
	143-0213	1	1	For Gas Only Carburetor
	143-0213		1	Gas-Gasoline Carburetor (NOTE: Quantity is 2 for Gas-Gasoline Carburetor)

REF. NO.	PART NO.	QTY.		PART DESCRIPTION
		B	C	
16	812-0014	4	4	Screw, Round Head (#3-48 x 3/16") Choke and Throttle Valve Attaching (§†**)
17	143-0110	1	1	Plug, Welsh
18	143-0214	1	1	Spring, Throttle Lever Adjustment Screw
19	143-0112	1	1	Spring, Idle Adjustment Screw
20	143-0114	1	1	Spring, High Speed Adjustment Needle
21	143-0215	1	1	Screw, Throttle Lever Adjusting
24	145-0308	1	1	Tube, Gas Inlet - For Gas and Gas-Gasoline Carburetor Only
25	145-0309	1	1	Needle, Gas Adjustment - For Gas and Gas-Gasoline Carburetor Only
26	148-0010	1	1	Spring, Gas Adjustment Needle - For Gas and Gas-Gasoline Carburetor Only
27	143-0231	1	1	Wire, Choke Lock - For Gas-Gasoline Carburetor Only
28	505-0008	1	1	Plug, Pipe (1/8") - For Gas Carburetor Only
29	854-0003		4	Washer, Lock - Valve Plate (§†)

- * - Contained in 143-0281 Gasket Kit.
- ** - Contained in 143-0201 Repair Kit.
- † - Contained in 143-0298 Repair Kit.
- § - Contained in 143-0200 Repair Kit.



**CARBURETOR (ZENITH) PARTS GROUP - (REPLACEMENT FOR CARTER)
 BEGIN SPEC R**

NOTE: See separate group for Carter Carburetor parts, Spec A through Q.

REF. NO.	PART NO.	QTY.		PART DESCRIPTION
		B	C	
CARBURETOR, GASOLINE				
	141-0693	1		Manual Choke
	141-0686		1	Manual Choke
	141-0692	1		Electric Choke
	141-0685		1	Electric Choke
CARBURETOR, GAS-GASOLINE (Optional)				
	141-0717	1		Manual Choke
	141-0719		1	Manual Choke
	141-0718	1		Electric Choke
	141-0720		1	Electric Choke
	141-0726	1		Carburetor, Gas Only (Optional)
	141-0725		1	Carburetor, Gas Only (Optional)
	141-0747	1	1	Repair Kit (Includes Parts Marked *)
	141-0748	1	1	Gasket Kit (Includes Parts Marked †)
	141-0281	1	1 †	Gasket, Carburetor Flange
1	141-0708	1	1	Bowl, Fuel
2	141-0741	1	1	Plate, Choke (Not used on Gas Only Units) - Manual Choke
2	141-0861	1	1	Plate, Choke (Not Used on Gas Only Units) - Electric Choke
3	141-0698	4	4	Screw and Washer, Choke and Throttle Plate Mounting (2 used on Gas only units)
4	141-0792	1	1	Plate, Throttle
4	141-0706	1	1	Plate, Throttle (Straight Gas)
5	141-0705	1	1 †	Retainer, Seal
6	141-0661	1	1 †	Seal, Rubber
7	141-0798	1	1 †	Valve Seat Assembly, Fuel (Not used on Gas only Units)
8	141-0696	1	1	Washer, Fuel Valve Seat (Not used on Gas only Units)
9	141-0703	1	1 †	Shaft, Float (Not used on Gas only Units)

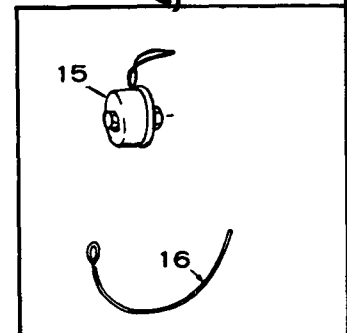
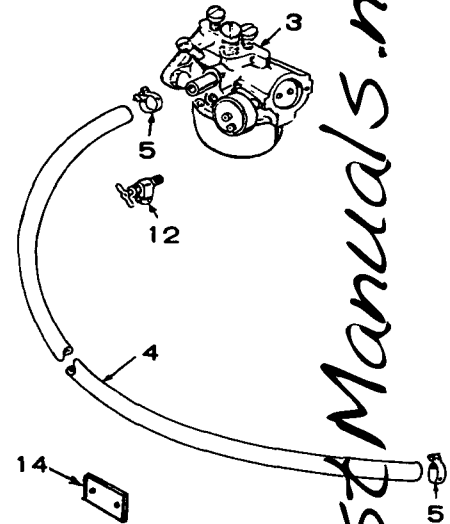
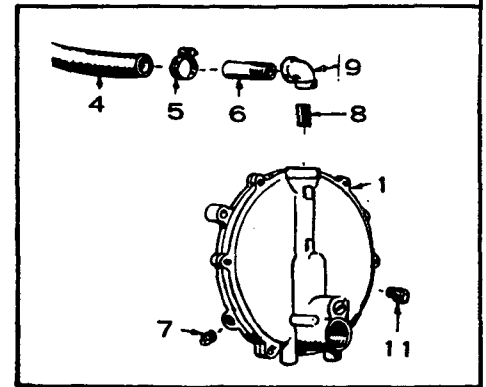
REF. NO.	PART NO.	QTY.		PART DESCRIPTION
		B	C	
10	141-0702	1	1	Float Assembly (Not used on Gas only Units)
11	141-0701	1	1 †	Gasket, Bowl to Body
12	141-0700	1	1	Screw, Throttle Stop
13	141-0711	1	1	Spring, Throttle Stop
14	NEEDLE, IDLE ADJUSTING			
	141-0713	1	1	Gasoline and Gas only Units
	141-0713	2	2	Gas and Gasoline Units
15	SPRING, IDLE NEEDLE			
	141-0710	1	1	Gasoline and Gas only Units
	141-0710	2	2	Gas-Gasoline Units
16	141-0077	1	1 †	Washer, Main Jet Assembly
17	141-0712	1	1	Jet Assembly, Main (Adjustable) Not used on Gas only Units
18	SHAFT, CHOKE			
	141-0742	1	1	Manual Choke Units
	141-0679	1	1	Electric Choke Gasoline Units
	141-0716	1	1	Electric Choke Gas-Gasoline Units
19	141-0699	1	1	Washer, Manual Choke Units
20	141-0697	1	1 †	Seal, Felt - Manual Choke Units
21	141-0203	1	1 †	Retainer, Felt Seal - Manual Choke Units
22	141-0709	1		Shaft and Lever, Throttle
22	141-0735	1		Shaft and Lever, Throttle
23	141-0733	1	1 †	Spring, Main Gas Needle - Gas and Gas-Gasoline Units
24	141-0734	1	1	Needle, Main Gas Adjusting - Gas and Gas-Gasoline Units
25	141-0736	1	1	Nut, Bowl - Gas only Units
26	141-0737	1	1	Plug, Pipe (1/8") - Gas Only Units
27	141-0738	1	1	Screw (#10-32) - Gas Only Units
28	141-0739	1	1	Washer, Gas Only Units
29	141-0799	1	1 †	Spring, Float

* - Contained in Repair Kit.
 † - Contained in Gasket Kit.

OPTIONAL FUEL SYSTEM GROUP (GAS AND COMBINATION GAS-GASOLINE)

REF. NO.	PART NO.	QTY.		PART DESCRIPTION
		B	C	
1	148-0311	1	1	Regulator, Gas (Garretson Manufacturer)
3	*CARBURETOR, GAS-GASOLINE			
	148-0961	1		Manual Start Engines - Spec A through Q
	141-0717	1		Manual Start Engines - Begin Spec R
	141-0760	1		Electric Start Engines - Spec A through Q
	141-0718	1		Electric Start Engines - Begin Spec R
	141-0755		1	Manual Start Engines - Spec A through Q
	141-0719		1	Manual Start Engines - Begin Spec R
	141-0758		1	Electric Start Engines - Spec A through Q
	141-0720		1	Electric Start Engines - Begin Spec R
3	*CARBURETOR, GAS			
	141-0764	1		Spec A through Q
	141-0726	1		Begin Spec R
	141-0757		1	Spec A through Q
	141-0725		1	Begin Spec R
4	503-0159	1	1	Hose, Regulator to Carburetor
5	503-0032	2	2	Clamp, Hose
6	148-0519	1	1	Connector, Hose
7	505-0057	1	1	Plug (1/8"), Regulator
8	505-0101	1	1	Nipple (3/8 x 1"), Regulator Outlet
9	505-0039	1	1	Elbow, (3/8"), Regulator Outlet
	505-0120	1	1	Elbow, (3/8"), Regulator Outlet
11	148-0107	1	1	Vent, Regulator
12	504-0007	1	1	Valve, Shut-off (Fuel Pump Inlet)
14	149-0638	1	1	Plate, Fuel Pump Hole - Crankcase (Gas Fuel Engines)
15	307-0615		1	Primer Assembly, Solenoid (Used on some early models using Algas Regulator)
16	143-0231	1	1	Wire Choke Stop - Gas-Gasoline, Electric Choke Engines

* - See separate group for Components and Gasket Kit.

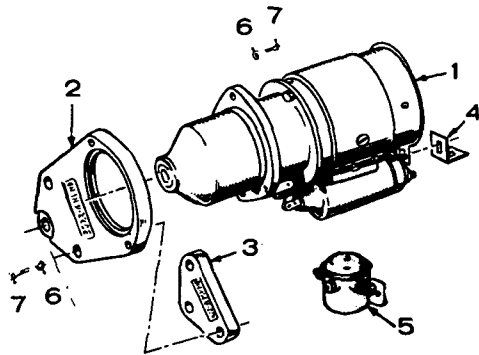


BestManuals.net

AUTOMOTIVE STARTER GROUP

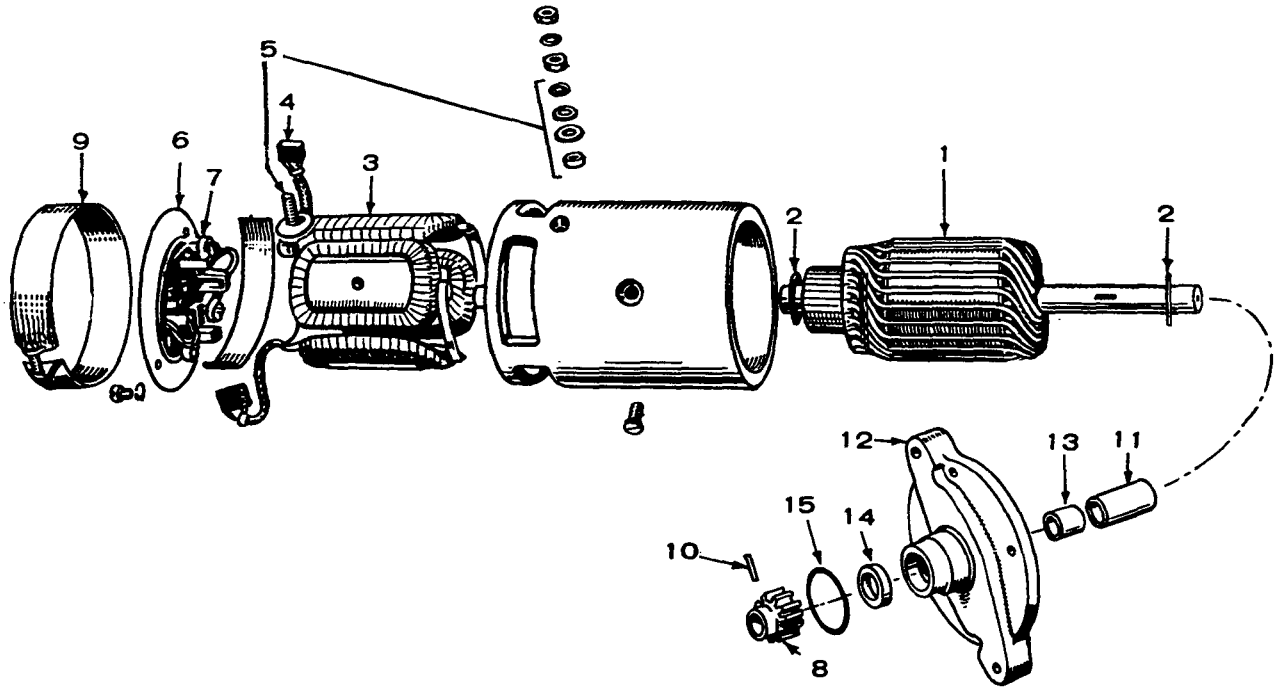
NOTE: This group applies to electric start engines.

NOTE: See separate group for Auto Cycle (Continuously engaged) Starter System.



REF. NO.	PART NO.	QTY.		PART DESCRIPTION
		B	C	
1	191-0427	1	1	*Motor, Start (12 Volt) Bendix
1	191-0324	1	1	Motor, Start (12 Volt) Solenoid Shift - Optional
2	191-0512	1	1	Flange, Mounting
3	191-0311	1	1	Spacer, Flange
4	191-0320	1	1	Bracket, Support, Rear
5	307-1046	1	1	Solenoid (12 Volt) - Optional
6	WASHER, LOCK			
	850-0050	2	2	Starter to Flange
	850-0050	3	3	Flange Mounting
7	SCREW, HEX HEAD			
	800-0051	2	2	Starter to Flange
	800-0054	3	3	Flange Mounting
	191-0432	1	1	Clutch, Starter (For 191-0324)
	191-0433	1	1	Solenoid, Starter Switch (For 191-0324)
	191-0434	1	1	Brush Set, Starter (For 191-0324)
	191-0712	1	1	Armature (For 191-0324)
	191-0497	1	1	Bearing, Drive End (For 191-0324)

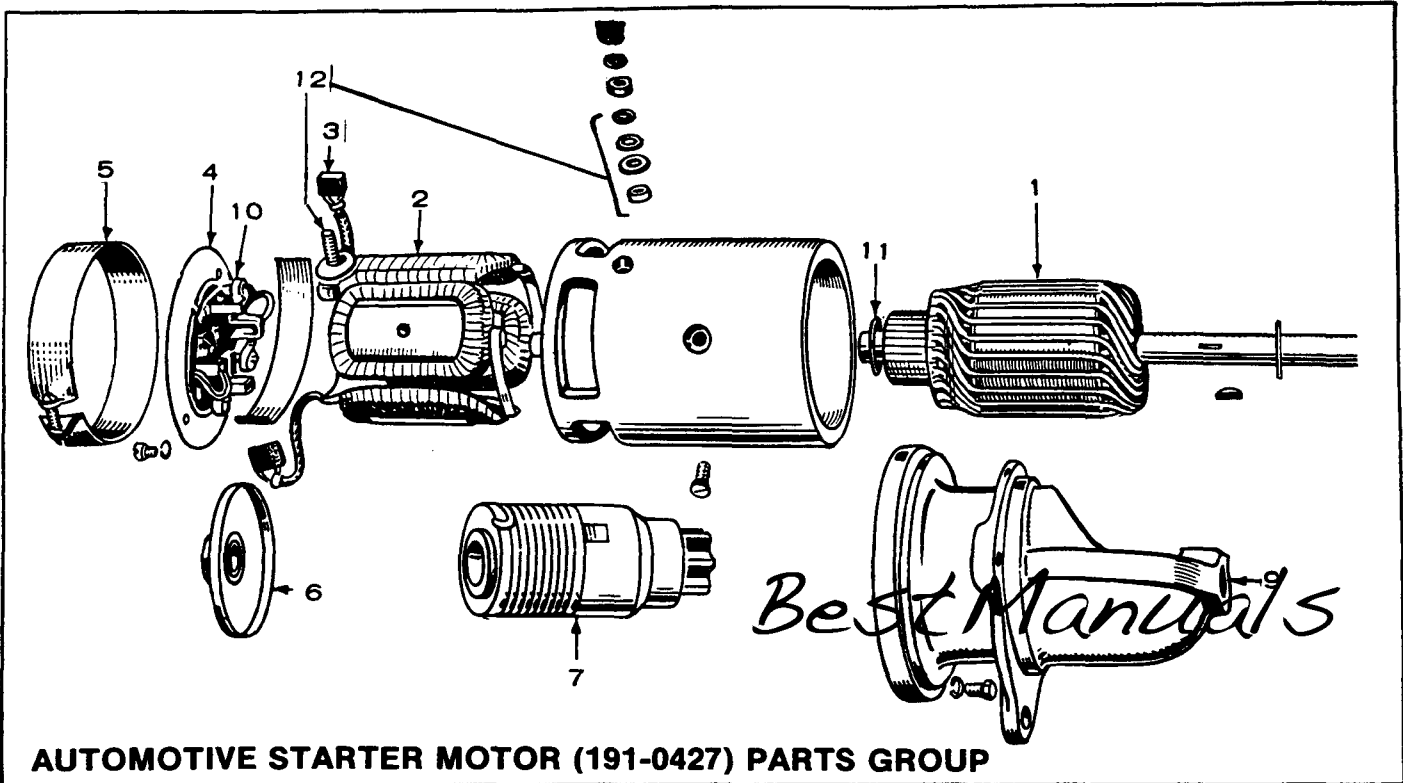
* - See separate group for components.



**12 VOLT AUTO CYCLE STARTER MOTOR (191-0453)
PARTS GROUP (OPTIONAL EQUIPMENT)**

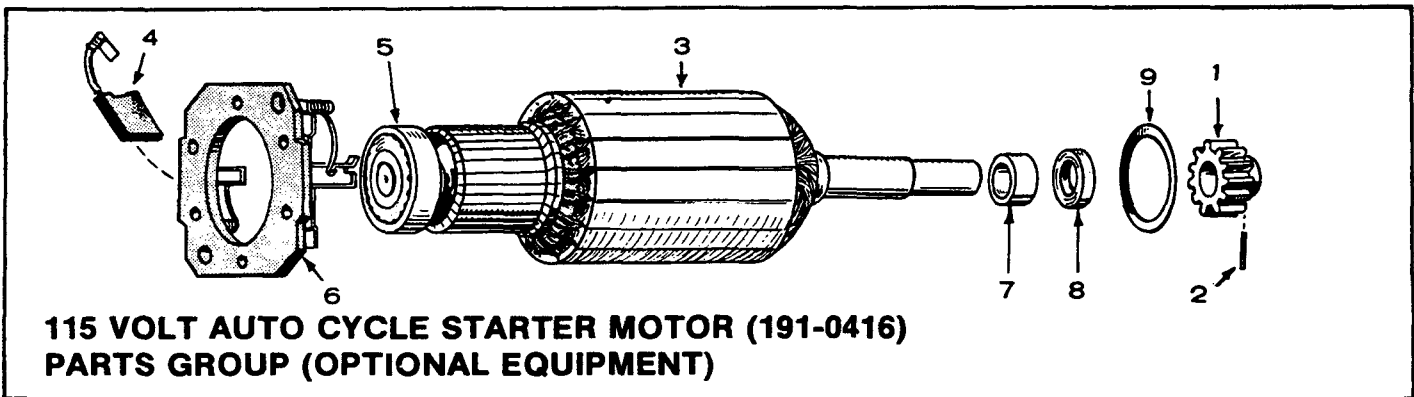
REF. NO.	PART NO.	QTY.		PART DESCRIPTION
		B	C	
	191-0453	1	1	Motor, Starter - 12 Volt - Includes Pinion Gear and Pin
1	191-0452	1	1	Armature
2	191-1021	1	1	Washer, Armature Thrust (Pkg)
3	191-1017	1	1	Coil Assembly, Package, Field
4	191-0513	1	1	Brush Set, Service
5	191-1022	1	1	Stud, Terminal (Pkg)
6	191-1018	1	1	Head Assembly, Commutator End
7	191-1020	1	1	Spring, Brush (Set of 4)
8	191-0450	1	1	Gear, Pinion - Starter
9		1	1	Band, Cover - Not Sold Separately
10	516-0154	1	1	Pin, Dowel - Pinion Gear
11	191-0451	1	1	Spacer, Armature to Adapter
12	191-0448	1	1	Adapter
13	191-0329	1	1	Bushing, Adapter
14	509-0092	1	1	Seal, Oil - Armature Shaft - Front
15	509-0093	1	1	Seal, "O" Ring - Starter Motor Mounting

NOTE: See Separate group for 115 Volt Auto Cycle Starter Motor 191-0416 Parts.



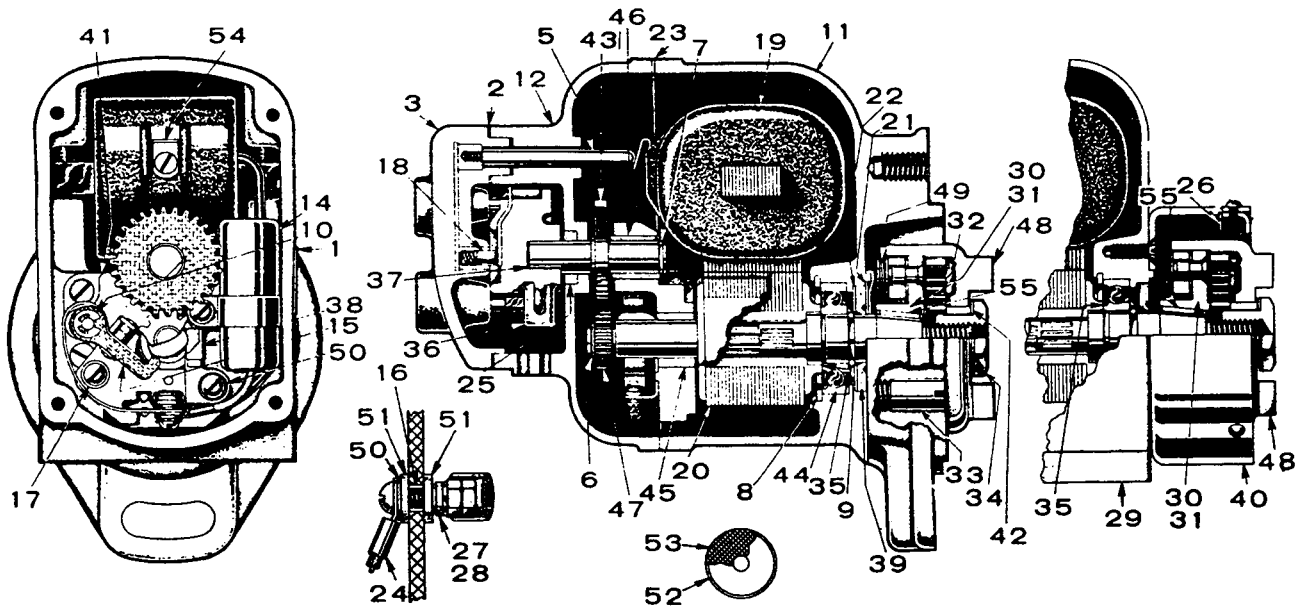
AUTOMOTIVE STARTER MOTOR (191-0427) PARTS GROUP

REF. NO.	PART NO.	QTY.		PART DESCRIPTION	REF. NO.	PART NO.	QTY.		PART DESCRIPTION
		B	C				B	C	
	191-0427	1	1	Motor Assembly, Starting	6	191-1019	1	1	Bearing Assembly, Intermediate
1	191-0517	1	1	Armature	7	191-0271	1	1	Drive Assembly, Bendix
2	191-1017	1	1	Coil Assembly Package - Field	8	191-0735	1	1	Bearing, Drive End
3	191-0513	1	1	Brush Set, Service	9	191-1020	1	1	Spring, Brush (Set of 4)
4	191-1018	1	1	Head Assembly, Commutator Field	10	191-1021	1	1	Washer, Armature Thrust (Package)
5		1	1	Band, Cover (Not Sold Separately)	11	191-1022	1	1	Stud, Terminal (Package)



115 VOLT AUTO CYCLE STARTER MOTOR (191-0416) PARTS GROUP (OPTIONAL EQUIPMENT)

REF. NO.	PART NO.	QTY.		PART DESCRIPTION	REF. NO.	PART NO.	QTY.		PART DESCRIPTION
		B	C				B	C	
	191-0416	1	1	Motor, Starter - 115 Volt - Includes Pinion Gear and Pin - Illustrated in Auto Cycle Starter Group	5	191-0420	1	1	Bearing, Ball - Armature Shaft Rear
1	191-0336	1	1	Gear, Pinion - Starter	6	191-0421	1	1	Holder Assembly, Brush
2	516-0150	1	1	Pin, Starter Pinion Gear	7	191-0329	1	1	Bushing, Armature Shaft Front
3	191-0418	1	1	Armature	8	509-0092	1	1	Seal, Oil - Armature Shaft Front
4	191-0419	2	2	Brush	9	509-0093	1	1	Seal, "O" Ring - Starter Motor Mounting

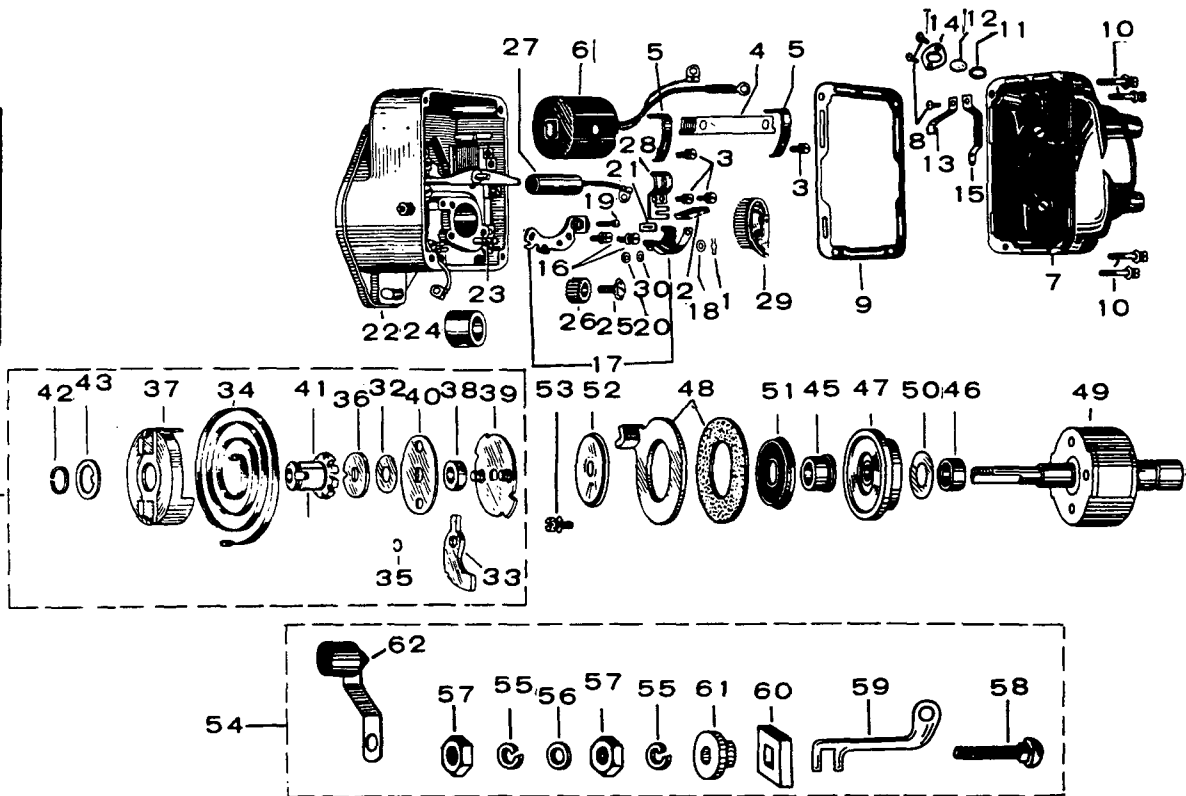
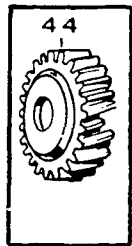


MAGNETO PARTS GROUP - BEGIN SPEC R

NOTE: See separate group Spec A through Q.

REF. NO.	PART NO.	QTY.		PART DESCRIPTION	REF. NO.	PART NO.	QTY.		PART DESCRIPTION
		B	C				B	C	
	161-0252		1	Magneto Assembly - Includes Gear	41	(F)X4631		1	Bearing Support
1	(F)A195			Nameplate	42	(F)B5931B		1	Coupling Nut Washer
2	(F)B682	1		End Cap Cover Gasket	43	(F)Y5939		1	Distributor Shaft and Gear Assembly
3	(F)C800	1		End Cap Cover	44	161-0071		1	Drive End Bearing
5	(F)J983A	1		High Tension Lead Rod	45	(F)A5950A		1	Cam End Bearing
6	(F)D1498	1		Rotor Gear Snap Ring	46	161-0073		1	Distributor Bearing
7	(F)G1498	1		Distributor Shaft Snap Ring	47	(F)Q5952		1	Rotor Gear
8	(F)B1498B	1		Drive End Bearing Snap Ring	48	(F)TZ5957		1	Coupling Shell - Flange Mounting
9	(F)B1498D	1		Rotor Shaft Snap Ring	49	(F)T5963		1	Pawl Spring - Flange Mounting
10	(F)G1498G	1		Fulcrum Pin Snap Ring	50	(F)B5969		1	Contact Screw Plate Washer
11	(F)FX2425	1		Housing - Flange Mounting	51	(F)C6018		2	Switch Insulating Washer
12	(F)R2430C	1		End Cap	52	161-0219		2	Vent Cover
14	161-0182	1		Condenser	53	161-0221		2	Vent Screen
15	161-0166	1		Breaker Point Set	54	(F)D6120		1	Coil Clip
16	(F)K2457A	1		Ground Switch Screw Bushing	55	515-0001		1	Key
17	(F)D2458	1		Contact Screw Plate Washer - #6		(F)859D		2	Screw, End Cap Cover (#8-32 x 9/16")
18	(F)E2460B	1		Center Brush and Spring		(F)10S14D		4	Screw, End Cap (#10-24 x 7/8")
19	161-0029	1		Coil	161-0224			1	Screw, Condenser (#8-32 x 1/4")
20	(F)HW2480	1		Magnetic Rotor	(F)6S6Z			1	Screw, Terminal Bucher (#6-32 x 3/8")
21	161-0128	1		Drive End Seal Outer Washer	161-0225			1	Screw, Contact Support (#6-32 x 3/8")
22	(F)A2492C	1		Drive End Seal Inner Washer	(F)8S6U			1	Screw, Contact Support (#8-32 x 3/8")
23	(F)H2498	1		End Cap to Housing Gasket	161-0126			1	Washer, Lock - Ground Switch
24	(F)J2499A	1		Primary Terminal Wire Assembly	(F)8N1			3	Nut, Ground Switch Screw
25	(F)G2501	1		Distributor Shaft Seal	(F)25S12G			2	Screw, Base Plate (1/4-20 x 3/8")
26	(F)D2502	1		Outer Shell Flat Washer - FM-X4A	(F)25S6G			4	Screw, Outer Shell Coupling (1/4-20 x 3/8")
27	(F)M2514	1		Ground Switch Lever	814-0077			4	Screw, Bearing Support (#8-32 x 3/8")
28	(F)L2514C	1		Ground Switch Complete	161-0223			2	Screw, Cover (#6-32 x 1/4")
29	(F)A2561A	1		Base Plate - Type FM-X4A	(F)6S3W			1	Screw, Coil Clip (#6-32 x 3/16")
30	(F)S2563	1		Coupling Hub Assembly					
31	(F)BS2563C	1		Coupling Complete					
32	(F)E2565	1		Coupling Drive Spring					
33	(F)S2568	1		Pawl Stop Pin					
34	(F)M2570	1		Coupling Nut					
35	(F)C2723	2		Drive End Bearing Shim					
36	(F)DX2765	1		Distributor Rotor					
37	(F)A2766	1		Distributor Rotor Spring Clip					
38	(F)G2788	1		Cam Wick and Holder					
39	161-0062	1		Drive End Seal					
40	(F)C4591	1		Coupling Outer Shell					

NOTE: Parts with Onan part numbers order from Onan. Order parts with Fairbanks (F) number from your nearest Fairbanks Morse dealer.



MAGNETO PARTS GROUP - SPEC A THROUGH Q

NOTE: See separate group beginning Spec R.

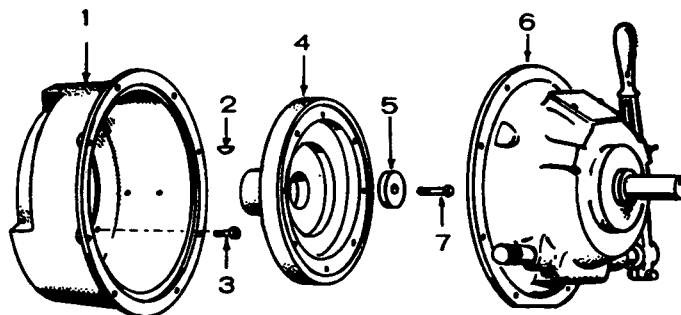
REF. NO.	PART NO.	QTY.		PART DESCRIPTION
		B	C	
	162-0242	1		Magneto, Complete
1	(Wico) 4210	1		Lock, Breather Arm
2	(Wico) 5077	1		Wiper, Cam - Felt
3	(Wico) 5411	4		Screw - (2) Condenser Clamp, (2) Coil Core Clamp
4	162-0244	1		Core, Coil (Wico #X5524)
5	(Wico) 5633	2		Clamp, Coil Core
6	162-0246	1		Coil (Wico #X5700 B)
7	162-0248	1		Cap Assembly, Distributor (Wico #X5777)
8	(Wico) 5536	3		Screw, (1) Coil Contact (2) Window Clamp Plate
9	(Wico) 5618	1		Gasket, Distributor Cap
10	(Wico) 5622	4		Screw and Lock Washer, Distributor Cap Mounting
11	(Wico) 5719	1		Gasket, Window Seal
12	(Wico) 5753	1		Window
13	(Wico) 5775	1		Spring, Coil Contact
14	(Wico) 5895	1		Plate, Window Clamp
15	(Wico) X6001	1		Core, Coil (Wico #X5524)
16	(Wico) 5900	2		Screw, Fixed Contact Clamp
17	162-0204	1		Point Set, Breaker (Wico #X5996)
18	(Wico) 3219	1		Washer, Breaker Point Aligning
19	(Wico) 5431	1		Screw, Breaker Spring Clamp
20	(Wico) 5717	1		Washer, Breaker Point Aligning
21	(Wico) 7644	1		Felt, Breaker Arm
22	(Wico) X6196	1		Housing Assembly
23	(Wico) 5603	1		Pivot, Breaker Arm
24	(Wico) 5610	1		Bushing, Breaker Plate
25	(Wico) 6466	1		Screw and Washer, Distributor Gear

REF. NO.	PART NO.	QTY.		PART DESCRIPTION
		B	C	
26	162-0250	1		Gear, Distributor (Wico #6865)
27	162-0227	1		Condenser (Wico #X6916)
28	(Wico) 6924	1		Clamp, Condenser
29	162-0251	1		Rotor, Distributor (Wico #9564)
30	(Wico) 10407	1		Washer
31	162-0249	1		Coupling Assembly, Impulse (Wico #X6516)
32	(Wico) M-42XA	1		Washer, Flange Spacing
33	(Wico) A-179X	2		Arm, Trip
34	(Wico) 15-186	1		Spring, Drive
35	(Wico) A-243X	2		Ring, Snap - Impulse Coupling
36	(Wico) IVA-0583	1		Washer, Drive Cup Spacing
37	(Wico) 2061A	1		Cup, Drive
38	(Wico) 2122	1		Spacer, Driven Flange
39	(Wico) X2286	1		Flange Driven
40	(Wico) 2288	1		Retainer, Drive Spring
41	(Wico) 6412	1		Nut, Lock - Impulse
42	162-0253	1		Ring, Lock - Impulse (Wico #6424)
43	162-0254	1		Washer, Thrust (Wico #6425)
44	160-0674	1		Gear, Drive
45	(Wico) 5518	1		Spacer, Impulse
46	(Wico) 5520	1		Spacer, Bearing Cage
47	162-0243	1		Bearing and Cage Assembly, (Wico #X5521)
	(Wico) 5516	1		Ring, Retaining - Rotor Bearing (Included in 162-0243 Assembly)
	(Wico) 5517	1		Bearing, Rotor (Included in 162-0243 Assembly)
	(Wico) 5567	1		Cage, Rotor Bearing (Included in 162-0243 Assembly)
48	162-0245	1		Plate and Gasket, Impulse Stop (Wico #X5540)

REF. NO.	PART NO.	QTY.		PART DESCRIPTION
		B	C	
49	162-0247		1	Rotor (Wico #Y5710)
50	(Wico) 5926		1	Shield, Ball Bearing
51	(Wico) 6199		1	Seal, Oil
52	(Wico) 6204		1	Slinger, Oil
53	(Wico) 6465		4	Screw and Lockwasher, Impulse Stop Clamp
54	(Wico) X5654		1	Connection Assembly, Ground
55	(Wico) M-55XA		2	Washer, Lock - Ground Stud
56	(Wico) 1XA-256		1	Washer, Ground Stud
57	(Wico) 3230		2	Nut, Ground Stud

REF. NO.	PART NO.	QTY.		PART DESCRIPTION
		B	C	
58	(Wico) 3945		1	Stud, Ground
59	(Wico) 5635		1	Connector, Ground
60	(Wico) 9820		1	Lock, Insulating - Ground Stud
61	(Wico) 11874		1	Insulator, Ground Stud
62	(Wico) X5632		1	Button, Stop

NOTE: Parts having Wico number, order from your nearest Wico Dealer, giving Part Number and Complete Description. Parts having Onan number, order from Onan.

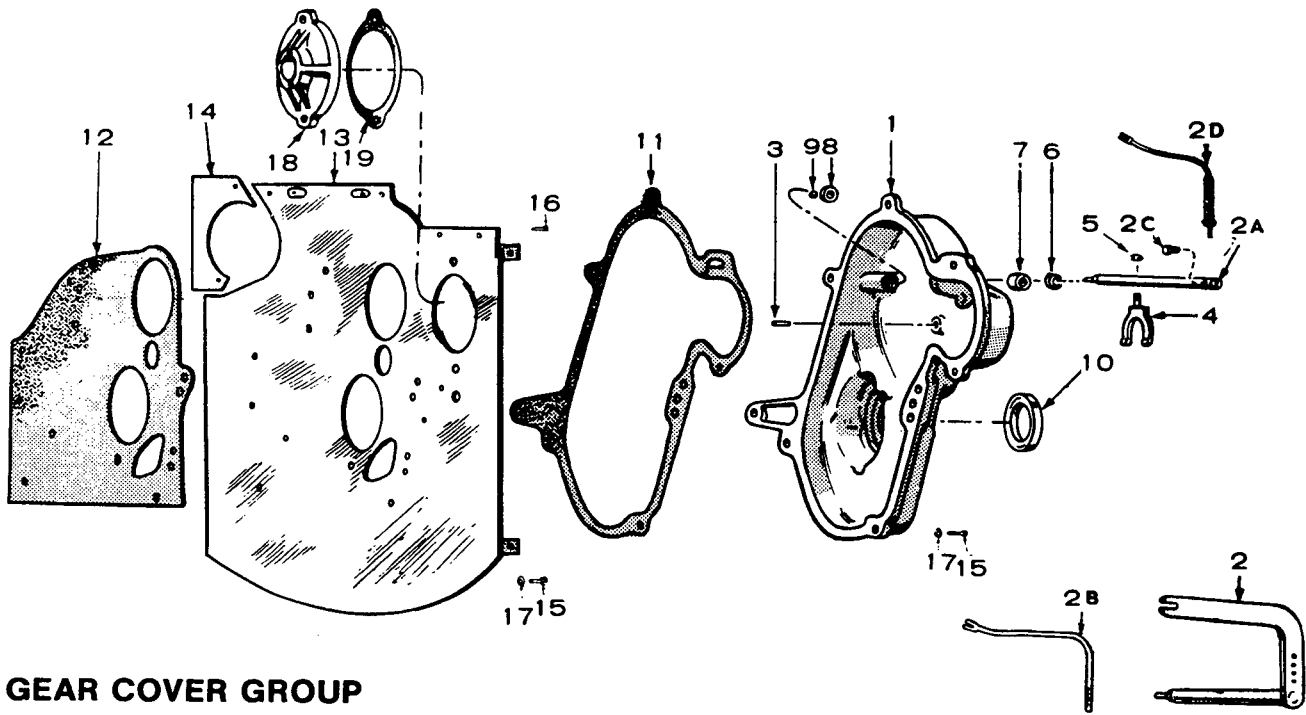


ROCKFORD CLUTCH GROUP (OPTIONAL EQUIPMENT)

REF. NO.	PART NO.	QTY.		PART DESCRIPTION
		B	C	
1	190-0251	1	1	Housing, Clutch
2	516-0006	1	1	Key, Clutch
3	805-0019	4	4	Bolt Place (3/8-16 x 1-1/4")
4	190-0252	1	1	Flange, to Adapt Rockford Clutch
4	190-0253	1	1	Flange, to Adapt Twin Disc Clutch
5	190-0254	1	1	Washer, Flat
6	190-0258	1	1	*Clutch Assembly (Rockford)
7	800-0074	1	1	Screw, Hex Cap
8	190-0325	1	1	**Clutch Assembly (Twin Disc)

* - For Components contact your nearest Rockford Clutch Dealer. Borg Warner Corporation - Rockford, Illinois, 61100.

** - For Components contact your nearest Twin Disc Clutch Dealer, Racine, Wisconsin 53403.



GEAR COVER GROUP

REF. NO.	PART NO.	QTY. B	QTY. C	PART DESCRIPTION
1	COVER ASSEMBLY, GEAR, COMPLETE - INCLUDES PARTS MARKED *			
	103-0277	1		Standard - Spec A through S (For Engines Spec A through C Also Order 103-0251 Gasket and 150-0840 Arm)
	103-0366	1		Standard - Begin Spec T
	103-0252	1	1	For Engines with Auto Cycle Starter Motor - Optional
	103-0278	1	1	For Engine with One Spring Variable Speed Governor - Optional
	103-0277	1		Standard - Spec A through S (For Engines Spec A thru C Also Order 103-0251 Gasket)
	103-0366	1		Standard - Begin Spec T
2	150-0785	1		Arm & Shaft, Spec A thru C For Replacement Order 150-0838 Shaft, 150-0840 Arm and 815-0176 Screw
	2A 150-0838	1		*Shaft, Governor - Begin Spec D
	2A 150-0838	1	1	*Shaft, Governor
	2A 150-0901	1	1	*Shaft, Governor (For 103-0278 Cover only) - Optional
	2B 150-0840	1		Arm, Governor Shaft to Carburetor - Spec D thru P
	2B 150-0836	1		Arm, Governor Shaft to Carburetor - Spec A thru Q
	2C 815-0176	1		*Screw, Hex (8-32 x 1/2") - Begin Spec D
	2C 815-0176	1		*Screw, Hex (8-32 x 1/2")
2D	ARM ASSEMBLY, GOVERNOR - BEGINSPEC R			
	150-1093	1		Standard
	150-1102	1		Variable and Two Speed Governor
	150-1091	1		Standard
	150-1100	1		Variable and Two Speed Governor
	3 516-0111	1	1	*Pin, Roll, Governor Cup Stop
	4 150-0777	1	1	*Yoke, Governor
	5 518-0129	1	1	*Ring, Yoke
	6 509-0088	1	1	*Seal, Oil
	7 510-0048	1	1	*Bearing, 1/2" Governor Shaft

REF. NO.	PART NO.	QTY. B	QTY. C	PART DESCRIPTION
8	510-0082	1	1	*Bearing, For 1/4" Governor Shaft
9	*BEARING, BALL, GOVERNOR SHAFT THRUST			
	9 510-0014	1	1	3/16" Spec A through C and Also used on Optional 103-0252 Gear Cover
	510-0043	1	1	5/16", Begin Spec D
	10 509-0087	1	1	*Seal, Oil
11	GASKET, GEAR COVER			
	103-0219	1	1	For Cast Iron Cover, Spec A through C
	103-0251	1	1	For Die Cast Cover, Begin Spec D
	103-0231	1	1	For Optional 103-0252 Gear Cover Assembly
12	103-0218	1	1	Gasket, Backplate
13	BACKPLATE, GEAR COVER			
	103-0226	1	1	Manual Start Engines
	103-0271	1	1	For Automotive Type Starter (To replace backplate on early models also order 134-1532 Baffle)
	103-0225	1	1	For Engines with Auto Cycle Starting System
14	134-1532	1	1	Baffle, Gear Cover Backplate
15	SCREW, HEX CAP 800-0028	1	1	Gear Cover Mounting (5/16-18 x 1)
	110-0879	4	4	Gear Cover Mounting (5/16-18 x 1-1/4)
	800-0026	1	1	Gear Cover Backplate Mounting
16	815-0347	2	2	Screw, Gear Cover Backplate Mounting
17	WASHER, LOCK 526-0115	5	5	Gear Cover Mounting
	850-0045	1	1	Gear Cover Backplate Mounting
18	103-0221	1	1	Cover, Gear Cover Backplate Opening
19	160-0721	1	1	Gasket, Backplate Opening Cover

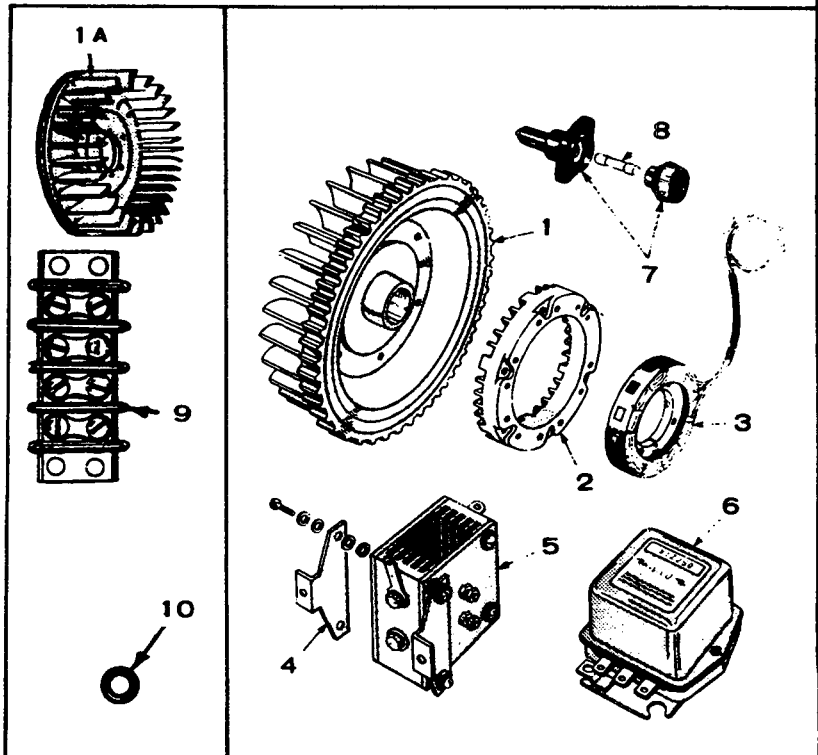
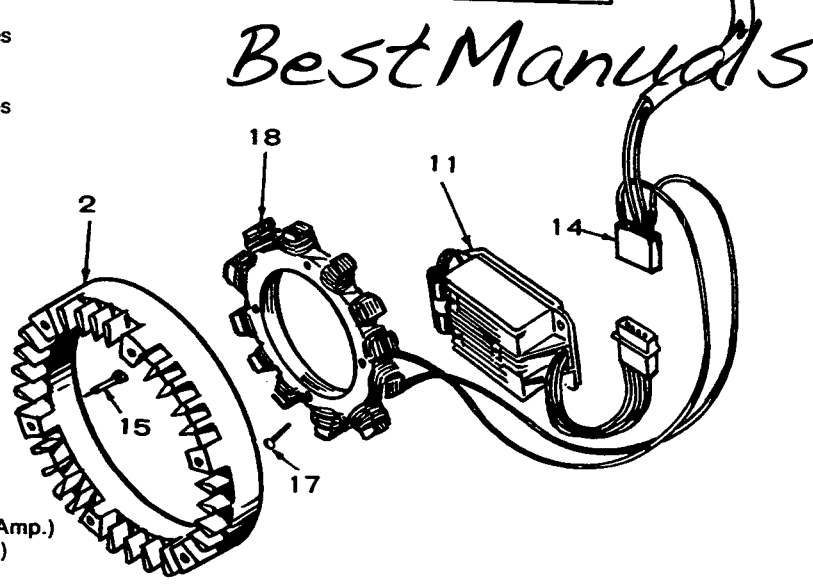
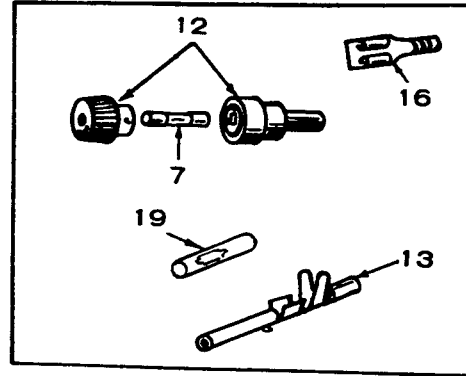
* - Parts Included in Gear Cover Assembly.

CHARGING ALTERNATOR GROUP, 12-VOLT

NOTE: See Separate Group Spec A through Q.

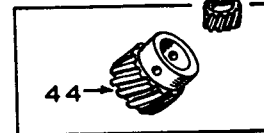
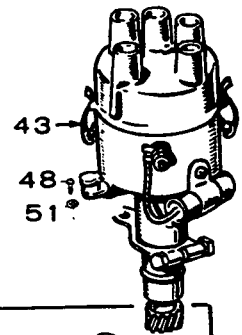
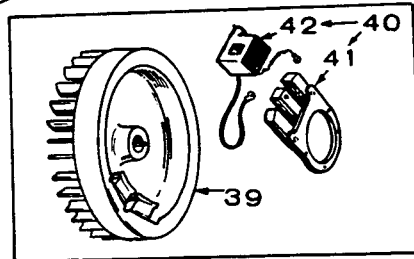
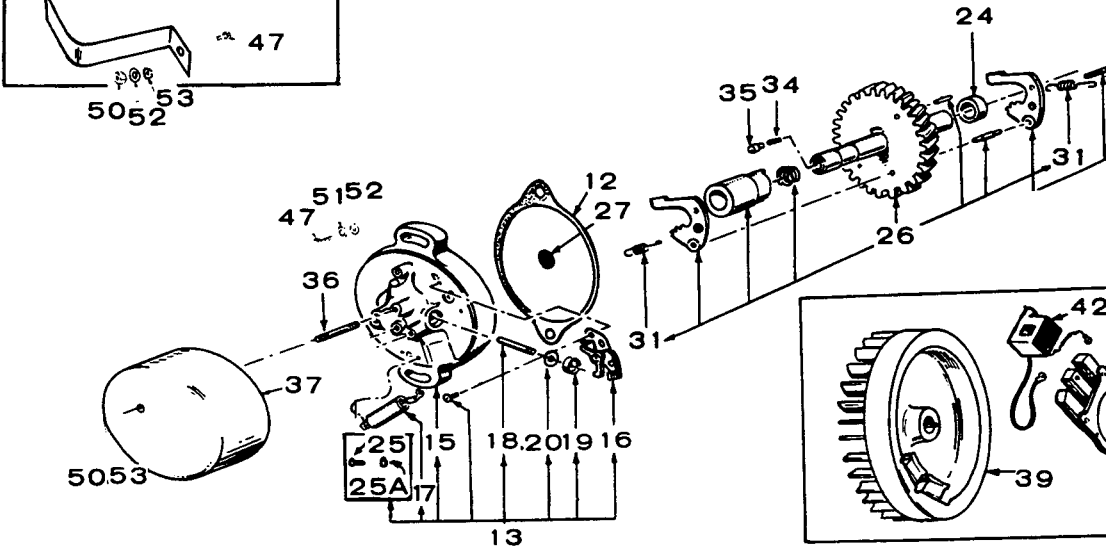
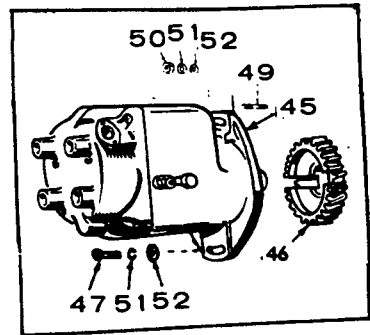
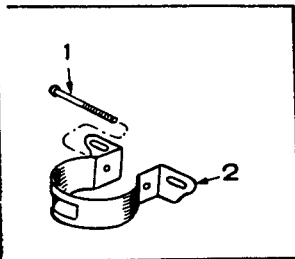
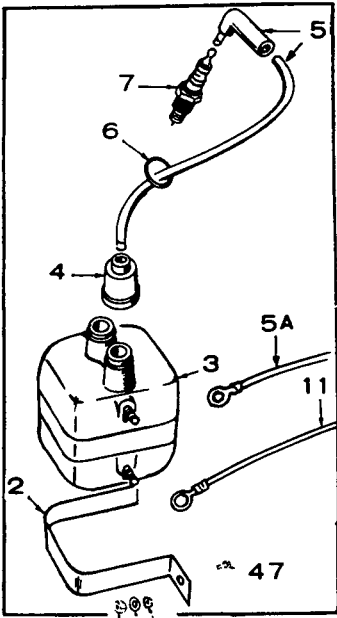
REF. NO.	PART NO.	QTY.		PART DESCRIPTION
		B	C	
1	191-0403	1		Flywheel, Includes Ring Gear (Also listed in Crankshaft and Flywheel Group)
1A	134-1556	1		Flywheel, Includes Ring Gear (Also listed in Crankshaft and Flywheel Group)
2	191-0400	1	1	Rotor
3	STATOR ASSEMBLY			
	191-0509	1		Spec A through S
	191-0740	1		Begin Spec T - Includes Parts Marked *
	191-0509	1		Spec A through U
	191-0740	1		Begin Spec V - Includes Parts Marked *
4	BRACKET, RECTIFIER MOUNTING			
	305-0262	2		Spec A through S
	305-0262	2		Spec A through U
5	RECTIFIER ASSEMBLY, INCLUDES MOUNTING BRACKETS			
	305-0267	1		Spec A through S
	305-0267	1		Spec A through U
6	REGULATOR, VOLTAGE			
	305-0261	1		Spec A through S
	305-0261	1		Spec A through U
7	HOLDER, FUSE			
	321-0103	1		Spec A through S
	321-0103	1		Spec A through U
8	FUSE			
	321-0128	1		Spec A through S
	321-0162	1		*Begin Spec T
	321-0128	1		Spec A through U (20 Amp.)
	321-0162	1		*Begin Spec V (30 Amp.)
9	BLOCK, TERMINAL (4 Place)			
	332-0537	1		Spec A through S
	332-0537	1		Spec A through U
10	GROMMET, RUBBER - BLOWER HOUSING			
	508-0071	1		Spec A through S
	508-0071	1		Spec A through U
11	REGULATOR, VOLTAGE			
	305-0478	1		Begin Spec T
	305-0478	1		Begin Spec V
12	*HOLDER, FUSE			
	321-0165	1		Begin Spec T
	321-0165	1		Begin Spec V
13	*SOCKET, CONNECTOR			
	323-0488	4		Begin Spec T
	323-0488	4		Begin Spec V
14	*CONNECTOR, SOCKET HOUSING			
	323-0759	1		Begin Spec T
	323-0759	1		Begin Spec V
15	812-0133	1	1	Screw, Rotor Mounting
16	*TERMINAL, CRIMP			
	332-0529	1		Begin Spec T
	332-0529	1		Begin Spec V
17	813-0107	1	1	Screw, Stator Mounting
18	*STATOR ONLY			
	191-0724	1		Begin Spec T
	191-0724	1		Begin Spec V
19	*CONNECTOR, FASTON			
	332-0556	1		Begin Spec T
	332-0556	1		Begin Spec V

* - Included in Stator Assembly.



Best Manuals

IGNITION GROUP



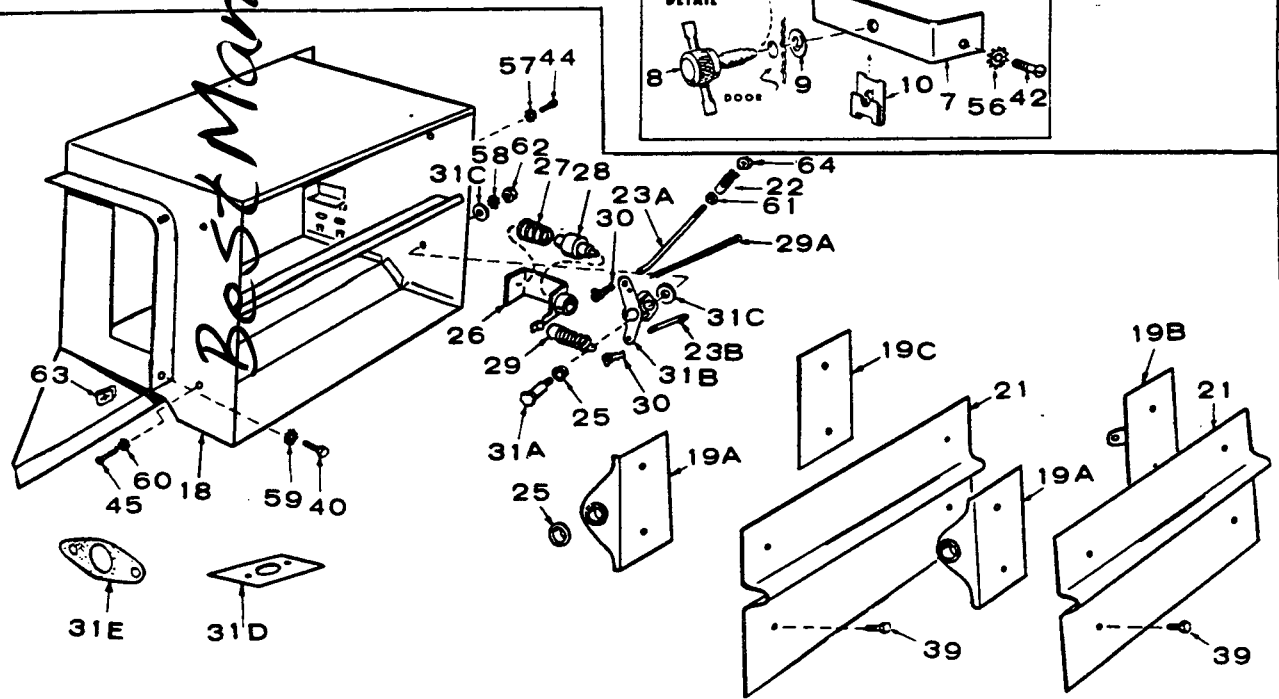
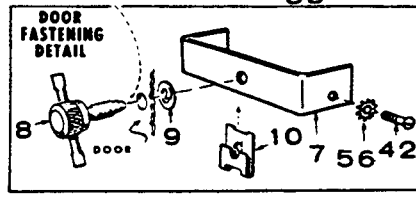
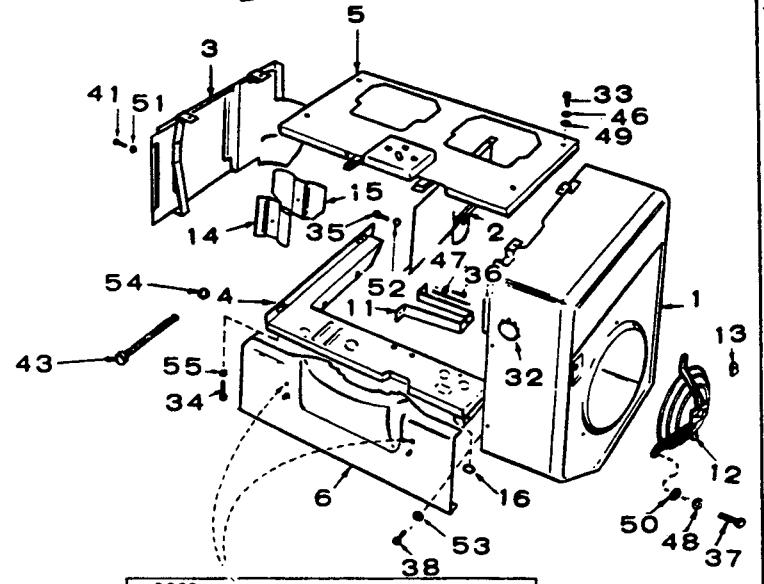
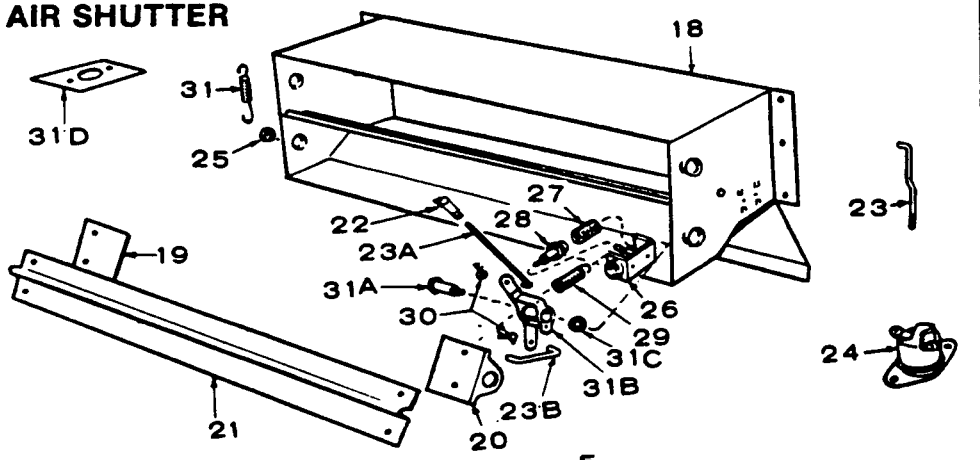
REF. NO.	PART NO.	QTY.		PART DESCRIPTION
		B	C	
1	166-0286	1		Screw, Coil Clamp (Battery Ignition) - Spec A thru S
2	CLAMP, IGNITION COIL - BATTERY IGNITION			
	166-0682	1		Spec A through S
	166-0556	1		Begin Spec T
	166-0279		1	All Models
3	COIL, IGNITION - BATTERY IGNITION			
	160-0792	1		Spec A through S
	166-0346	1		Begin Spec T
	166-0278		1	All Models
4	160-0558	2	6	Nipple, Rubber - Coil (Battery Ignition)
5	CABLE, SPARK PLUG			
	167-1384	2		26" Long (Magneto Ignition)
	167-1387	2		14-1/2" Long (Battery Ignition)
	167-1379	2		17" Long - Use with Optional Wico Magneto
	167-1396		2	22-1/2" Long (Magneto Ignition)
	167-1379		1	17" Long - (Magneto Ignition)
	167-1381		1	28-1/2" Long - (Magneto Ignition)
	167-1395		3	15-1/2" Long - (Battery Ignition)
	167-1399		1	25-1/2" Long - (Battery Ignition)
5A	167-1398		1	Cable, Coil to Distributor (Battery Ignition)
6	509-0018		1	Ring, "O" - Spark Plug Cables
7	167-0241	2	4	Plug, Spark
11	336-0179		1	Lead, Coil to Breaker Box (Battery Ignition)
11	336-0333		1	Lead, Coil to Distributor (Battery Ignition)
12	160-0721	1	1	Gasket, Breaker Plate Mounting
13	160-0762	1		Plate Assembly, Ignition Breaker
15	160-0891	1		Plate Only, Breaker
16	160-0002	1		Point Set, Breaker
17	312-0116	1		Condenser, Ignition
18	160-0716	1		Plunger, Ignition Breaker
19	160-0717	1		Cup, Plunger Diaphragm
20	160-0718	1		Diaphragm, Ignition Plunger
24	160-0720	1		Spacer, Ignition Timing Control
25	517-0072	1		Screw, U-Drive - Breaker Plunger Hole
25A	509-0065	1		Seal, "O" Ring
26	160-0707	1		Control Assembly, Ignition Timing
27	160-0806	1		Disc, Thrust - Plunger Bearing
31	160-0711	2		Spring, Timing Weight
34	160-0773	1		Spring, Thrust Plunger
35	160-0774	1		Plunger, Thrust
36	520-0347	1		Stud, Ignition Plate Cover Mounting
37	160-0769	1		Cover, Ignition Plate - Includes Stop Button (Magneto Ignition)

REF. NO.	PART NO.	QTY.		PART DESCRIPTION
		B	C	
37	160-0719	1		Cover, Ignition Plate (Battery Ignition)
39	160-0692	1		Flywheel, With Magnets (Also Illustrated in Crankshaft and Flywheel Group) (Magneto Ignition)
40	160-0698	1		Backplate Assembly, Magneto - Includes Backplate, Pole Shoe, and Coil (Magneto Ignition)
41	160-0697	1		Backplate and Pole Shoe Assembly, Magneto (Magneto Ignition)
42	160-0693	1		Coil, Magneto (Magneto Ignition)
43	166-0307		1	*Distributor Assembly, Includes Drive Gear (Battery Ignition)
44	166-0303		1	Gear, Distributor Drive (Battery Ignition)
45	161-0252		1	*Magneto Assembly - Includes Drive Gear (Magneto Ignition)
45	162-0255		1	£Magneto Assembly - Includes Drive Gear - Optional (Wico XH-2D Spec XH-2677)
46	160-0674	1	1	Gear, Magneto Drive (Optional for 2-Cylinder Engine) (Magneto Ignition)
47	SCREW, HEX CAP			
	800-0052		2	Breaker Plate Mounting
	800-0051		1	Magneto Mounting
	800-0003		1	Coil Mounting
	800-0002		2	Coil Mounting
48	812-0148		1	Screw, Round Head - Distributor Mounting (Battery Ignition)
49	520-0119		1	Stud, Magneto Mounting
50	NUT, HEX			
	862-0003		1	Magneto Mounting
	860-0013		1	2 Coil Mounting
	865-0011		1	Breaker Plate Cover Mounting
51	WASHER, LOCK			
	850-0040		1	Distributor Mounting (Battery Ignition)
	850-0050		2	Magneto Mounting
	850-0050		2	Breaker Plate Mounting
52	WASHER, FLAT			
	526-0030		2	Magneto Mounting
	526-0026		2	Breaker Plate Mounting
	526-0015		1	2 Coil Mounting
53	WASHER, SHAKEPROOF			
	853-0013		1	Coil Mounting
	854-0014		2	Coil Mounting
	853-0008		1	Breaker Plate Cover Mounting

* - See Separate Group for Components.

£ - Order Components from your nearest Wico Dealer, giving description of part and Magneto number from Magneto nameplate.

BLOWER HOUSING AND AIR SHUTTER ASSEMBLY GROUP



BestManuals.net

REF. NO.	PART NO.	QTY.		PART DESCRIPTION
		B	C	
1	HOUSING, BLOWER			
	134-1050	1		JB Engine Only
	134-1087		1	JC Engine Only
2	134-1048	1	1	Housing, Cylinder Air (Front)
3	HOUSING, CYLINDER AIR (Rear)			
	134-1051	1	1	Standard Engine
	134-1508	1	1	Engine with Factory Mounted Controls
4	PAN, CYLINDER AIR HOUSING (Bottom)			
	134-1419	1		JB Engine Only
	134-1418		1	JC Engine Only
5	COVER, CYLINDER AIR HOUSING			
	134-1121	1		Spec A Through Q
	134-1787	1		Begin Spec R
	134-1119		1	Spec A Only
	134-1201		1	Spec B Through P
	134-1794		1	Begin Spec R
6	PANEL, AIR HOUSING DOOR			
	134-1039	1		Spec A Through U
	134-1096		1	Spec A Only
	134-1202		1	Begin Spec B
7	BRACKET, AIR HOUSING DOOR			
	135-1554	1		JB Engine Only
	134-1089		1	JC Engine Only
8	134-1373	1	2	Screw, Door Panel
9	134-1180	2	4	Washer, Screw - Retainer (Early Models used 8 for Top Covers)
10	870-0194	5	6	Nut, Tinnerman, Door Panel Cover
11	SUPPORT, BLOWER HOUSING AND GRILLE			
	134-1085	1		JB Engine Only
	134-1088		1	JC Engine Only
12	134-1091	1	1	Grille
13	134-1092	3	3	Retainer, Grille
14	134-1097		1	Baffle, Center Cylinder (Carburetor Side)
15	134-1098		1	Baffle, Center Cylinder (Opposite Carburetor Side)
16	508-0002	2	2	Grommet, Rubber - (Blower Housing 9/16")
17	SHUTTER ASSEMBLY, AIR DISCHARGE (Optional) INCLUDES PARTS MARKED *			
	134-1811	1		JB Engine Only
	134-1810		1	JC Engine Only
18	DUCT ONLY, AIR OUTLET (NOTE: Cannot be used on Early Model Shutter Assembly with External Shutter Pivot Springs)			
	134-1804	1		JB Engines Only (*)
	134-1805		1	JC Engines Only (*)
19	BRACKET AND PIVOT ASSEMBLY, SHUTTER			
	134-1242	3	3	JB and JC Engines (£ +)
	134-1242		2	JC Engines Only (#)
	134-1612		1	JC Engines Only (#)
19A	134-2411	2	2	JB and JC Engines (*)
19B	134-1802	1	1	JB and JC Engines (*)
19C	134-1801	1	1	JB and JC Engines (*)
20	134-1238	1	1	JB and JC Engines (£ +)
20	134-1611		1	JC Engines Only (*)
21	SHUTTER, AIR OUTLET			
	134-1252	2		JB Engines Only (£)
	134-1807	2		JB Engines Only (*)
	134-1237		2	JC Engines Only (+)
	134-1614		2	JC Engines Only (#*)
22	150-1358	1	1	Joint, Ball (*£+#)
23	134-1247	1	1	Rod, Shutter Control (£+)
23A	134-1606	1	1	Rod, Shutter Control (Upper) (#*)
23B	134-1607	1	1	Rod, Shutter Control (Lower) (#*)
24	309-0162	1	1	Switch, Hi Temperature

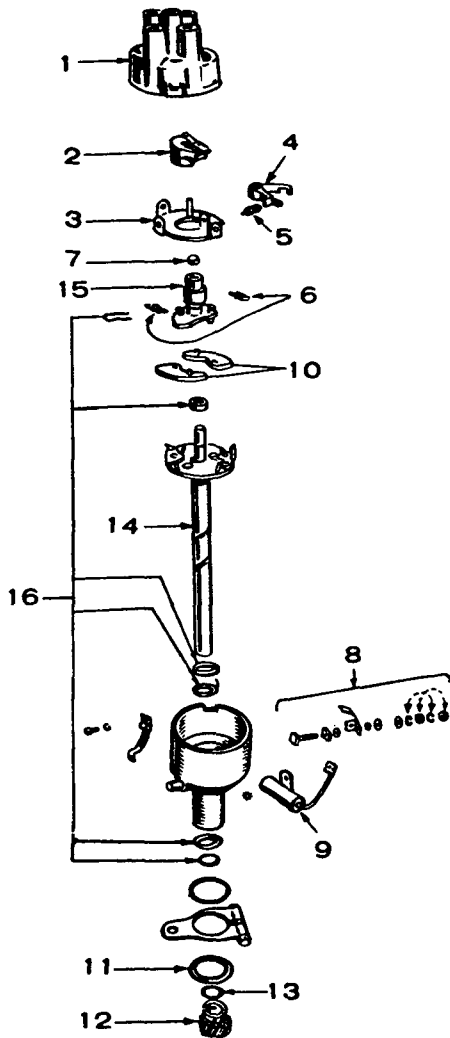
REF. NO.	PART NO.	QTY.		PART DESCRIPTION
		B	C	
25	BEARING, AIR SHUTTER			
	134-1248	4	4	JB and JC Engines (£+)
	134-1248		6	JC Engines Only (#)
	134-1783	4	4	JB and JC Engines (*)
	134-1248	2	2	JB and JC Engines (*)
26	BRACKET AND GUIDE, VERNATHERM			
	134-1244	1	1	JB and JC Engines (£+)
	134-1610	1	1	JB and JC Engines (#*)
27	134-0656	1	1	Spring, Vernatherm Element (*£+#)
28	309-0085	1	1	Element, Vernatherm (*£+#)
29	134-0658	1	1	Spring, Shutter Return - Lower (*£+#)
29A	134-1817	1	1	Spring, Shutter Return - Upper (*)
30	CLIP, ROD END			
	518-0004	1	1	Right Hand (*£+#)
	518-0006	2	2	Left Hand (#)
31	134-1437	2	2	Spring, Shutter Pivot (External) (*£+#)
31A	134-1605	1	1	Shaft, Actuating Arm (#)
31B	134-1604	1	1	Arm, Actuating (#)
31C	526-0045		1	Washer, Actuating Shaft (#)
31C	526-0213	1	1	Washer, Actuating Shaft (#)
31D	134-1375	1	1	Plate, Exhaust Outlet Cover (#)
31E	154-0738	1	1	Gasket, Exhaust Outlet (#)
32	517-0035	1	1	Plug, Dot Button - Governor Access
	SCREW, HEX HEAD CAP			
33	800-0004	4	4	Cylinder Air Housing Cover Mounting (1/4-20 x 5/8")
34	815-0235	2	2	Bottom Cylinder Air Housing Mounting (1/4-20 x 5/8")
35	815-0235	1	1	Front, Cylinder Air Housing Mounting (1/4-20 x 5/8")
36	800-0024	2	2	Blower Housing Support Mounting (5/16-18 x 1/2")
37	800-0007	3	3	Grille Mounting (1/4-20 x 1")
38	815-0235	6	6	Blower Housing Mounting (1/4-20 x 5/8")
39	815-0361	8	8	Shutter Mounting (Optional) (10-32 x 5/16") (*)
40	815-0235	3	3	Shutter Assembly Mounting (Optional) (1/4-20 x 5/8")
	SCREW, ROUND HEAD			
41	813-0097	2	2	Rear Air Housing Mounting (10-32 x 5/16")
42	813-0098	2	2	Air Housing Door Bracket Mounting (10-32 x 3/8")
43	812-0165	1	1	Center Baffle Mounting (1/4-20 x 4-1/2")
44	813-0097	2	2	Vernatherm Bracket and Guide Mounting (10-32 x 5/16") (Optional) (*)
45	812-0148	4	4	Bracket and Pivot Mounting (1/4-20 x 1/2") (Optional) (*)
	WASHER, LOCK			
46	850-0040	4	4	Cylinder Air Housing Cover Mounting (1/4")
47	850-0045	2	2	Blower Housing Support Mounting (5/16")
48	850-0040	3	3	Grille Mounting (1/4")
	WASHER, FLAT			
49	526-0021	4	4	Cylinder Air Housing Cover (1/4")
50	526-0115	3	3	Grille Mounting (5/16")
	WASHER, SHAKEPROOF			
51	854-0010	2	2	Rear Air Housing Mounting (#10 Internal)
52	853-0013	1	1	Front Air Housing Mounting (1/4" External)
53	854-0014	6	6	Blower Housing Mounting (1/4" Internal)
54	854-0014	1	1	Center Baffle Mounting (1/4" Internal)

REF. NO.	PART NO.	QTY.		PART DESCRIPTION
		B	C	
55	854-0013	2	2	Bottom Air Housing Mounting (#12 Internal)
56	853-0008	2	2	Air Housing Door Bracket Mounting (#8 External)
57	853-0008	2	2	Vernatherm Bracket Mounting (#8 External) Optional (*)
58	853-0016	1	1	Actuator Bearing Mounting (5/16" External) Optional (*)
59	853-0013	3	3	Shutter Assembly Mounting (1/4" External) Optional (*)
60	856-0006	4	4	Bracket and Pivot Moutning (1/4" External Internal) Optional (*)
	NUT, HEX			
61	870-0053	1	1	Ball Joint (10-32)
62	864-0002	1	1	Actuating Bearing Mounting (5/16-18) Optional (*)
63	870-0178	3	3	Speed Nut (1/4-20) Optional (*)
64	870-0131	1	1	Ball Joint (10-32) with External Tooth Lockwasher

REF. NO.	PART NO.	QTY.		PART DESCRIPTION
		B	C	

- * - Included in OPTIONAL Air Discharge Shutter Assembly. Used on late model engines (Internal Shutter Pivot Springs).
- £ - These parts apply to OPTIONAL Air Discharge Shutter Assembly (External Shutter Pivot Springs) used on 2 cylinder engines until the use of Shutter Assembly with internal shutter pivot springs.
- # - These parts apply to OPTIONAL Air Discharge Shutter Assembly (External Shutter Pivot Springs) used on 4 cylinder engines, Spec F until the use of Shutter Assembly with Internal Shutter Springs.
- + - These parts apply to OPTIONAL Air Discharge Shutter Assembly (External Shutter Pivot Springs) used on 4 cylinder engines, prior to Spec F.

DISTRIBUTOR GROUP



REF. NO.	PART NO.	QTY.		PART DESCRIPTION
		B	C	
	166-0307	1		Distributor Assembly, Includes Gear
1	166-0235	1		Cap
2	166-0234	1		Rotor
3	166-0297	1		Plate, Breaker
4	166-0245	1		Point Set, Breaker
5	166-0061	1		Nut, Lock, Contact Screw
6	166-0606	1		Spring Set, Governor Weight
7	166-0607	1		Wick Package
8	166-0608	1		Terminal Stud and Parts Package
9	166-0310	1		Condenser
10	166-0609	1		Weight Set, Governor
11	509-0096	1		Seal, Base
12	166-0303	1		Gear, Drive
13	518-0216	1		Ring, Retaining
14	166-0610	1		Shaft, Drive
15	166-0611	1		Cam and Stop Plate
16	166-0612	1		Bearing & Parts Package

SERVICE KITS AND MISCELLANEOUS

REF. NO.	PART NO.	QTY.		PART DESCRIPTION
		B	C	
	98-1100	1	1	Decal Kit
	168-0083	1		*Gasket Kit, Engine
	168-0084	1		*Gasket Kit, Engine
	522-0198	1		*Overhaul Kit - Spec A through Q
	522-0230	1		*Overhaul Kit - Begin Spec R
	522-0196	1		*Overhaul Kit - (Magnetic Ignition) - Spec A through Q
	522-0234	1		*Overhaul Kit - (Magnetic Ignition) - Begin Spec R
	522-0199	1		*Overhaul Kit, (Battery Ignition) - Spec A through Q
	522-0235	1		*Overhaul Kit - (Battery Ignition) - Begin Spec R
	525-0137	1	1	Paint, Touch-up (Green Enamel) - 16 Ounce Pressurized Can

* - Engines having optional continuously engaged "auto-cycle" starter, order also 168-0098 Supplementary Gasket Kit.

NOTE: For other Kits, refer to the group for the part in question.