



NON DESTRUCTIVE TESTING SOLUTIONS, INC.

Eddy Current Probe Catalog



October 2012

Eddy Current Probe Catalog

Table of Contents

NDTS Services Provided	3
What We Can Offer You	4
Warranty/Handling Shipping Damages Information	5
Connector Identification Chart	6
Probe Kits	7-11
Sizing Table.....	12
HF Surface Probes	13
Manual Bolt Hole Probes	14
Rotating Scanner Probes	15-16
Rotating Scanner Countersink Probes	16-17
LF Spot Probes	18
LF Ring Probes.....	19
Moulded Wheel Probes	20-21
Sliding Probes	22
Blade Probes	23
Finger Probes.....	24
Spring Loaded Probes	25
Delrin Surface Probes	25
Specials	26
Other Eddy Current Products	27

Copyright Notice - The contents of this catalog are the property of NDT Solutions, Inc. and EC/NDT LLC. Any redistribution or reproduction of part or all of the contents in any form is prohibited. ©NDTS All rights reserved.

To order: sales@ndts.com / 715.246.0433



NDTS Services Provided

INSPECTION SERVICES

- On-site and in-house inspection services
 - MAUS® - FlawInspecta® - C-scan
- Validation of Inspection Processes
- Part validation with Certificate of Conformance
- Inspection of customer provided test specimens

CONSULTING SERVICES

- Development of inspection techniques & processes
- Technical writing of procedures and techniques
- Technology transition program
 - Develop - Design - Build - Deliver - Transition
- Procedure streamlining
 - Increased Efficiency-Simplified Process-Time Savings
 - Quick Return on Investment

TRAINING SERVICES

- On-site and off-site training
- ASNT and NAS 410 Level I and Level II training
- MAUS system operation training
- MAUS system maintenance training
- MAUS operator refresher training
- On the job training services

QUICKTURN SERVICE & REPAIR

- MAUS maintenance services
- Equipment calibration services
- Evaluation and repair of MAUS equipment
- MAUS equipment lend/lease program
- MAUS logistical spare program
- MAUS replacement parts
- Equipment upgrade program
- System software updates

CUSTOM SCANNING SOLUTIONS

- Development of custom systems to meet specific inspection needs
- Custom solution development
 - Design - Build - Test - Install - Train - Support

SERVICE AND REPAIR PACKAGES AVAILABLE



The MAUS Automated Inspection System



In-house inspection services



Hands on training, inspection and analysis



Customized systems developed for specific NDT requirements

What We Can Offer You

Providing you with quality products in a fast and dependable manner with the service you deserve and need.

- ***Competitive Pricing***

We will meet or beat any competitor price.

- ***Our Research and Development Team Work for You***

We bring the world of specialty design to your fingertips with our experience and knowledge. You tell us what you need and we design it.

- ***We have a large selection of probe kits to choose from***

NDT Solutions is committed to our customers satisfaction. We design probe kits to meet our customers inspection needs and budget requirements.

- ***We have thousands of probes to choose from***

If there is a special probe you are looking for you will find it at NDT Solutions. We are ready to help you find the exact probe you need to get the job done.

Probe and Cable Repair

Re-Certification of Probes and Standards

- ***We accept all of our competitors and NDTs/EC-NDT probes and cables for repair.***
- ***Probes and cables which need repairs that are not manufactured by EC/NDT are replaced with EC/NDT probes and cables at repair probe prices.***
- ***What does this mean for you. You receive a new EC/NDT probe or cable for half the cost.***
- ***Save up to 50% on the cost of a new/repair.***

Warranty/Handling Shipping Damages Information

Warranty Information

All items manufactured and sold by EC/NDT are under warranty for manufacturing defects.

Wear, damage, material deterioration and other defects caused by improper use by the operator are not covered by warranty.

If, however, the above excluded conditions are related to the manufacturing process, design or materials used the item will be replaced under warranty. Replaced items will be delivered under full warranty.

A one-year warranty is applicable for all eddy current probes and reference standards. The warranty period for probe repairs is 6 months.

The customer will pay all shipping charges and duties if applicable from their facility to:

NDT Solutions Inc.

10-1 Airport Road

New Richmond, WI 54017-2703

NDT Solutions Inc. will cover the return costs via economical shipping methods to the customer's facilities. This does not include delays caused by the shipping company, customs, acts of God, which are unforeseen at time of shipping.

Important Notice - For Your Protection

Under U.S. shipping regulation, damage claims must be collected by the consignee. Do not return merchandise which has been damaged during the shipping process until after your claim has been established.

The carrier who delivers merchandise to your door is responsible for loss and damages. Acceptance of the shipment by the transportation company is acknowledgement that the articles received by them were in good condition and properly packed.

All claims for loss or damaged orders should be filed immediately with the transportation company making the delivery to your door. After you have made your claim please notify NDT Solutions Inc. about the problem. We will mark our records accordingly. Should you need assistance with the claim, we will be glad to help.

Handling Shipping Damages /Shortages

Visible Damage

- Have delivery person note the damage on freight bill noting the nature and extent of damages.
- Notify the transportation company's office to inspect the merchandise.
- File claim for damages at once. In filing a claim with the transportation company you can do one of the following:
 1. Make a cash adjustment for full value
 2. Arrange to have repairs made
 3. Replace the merchandise

Concealed Damage

- If damage is noticed when merchandise is unpacked notify transportation company immediately and ask to have it inspected.
- Do not destroy packing materials until shipment is inspected and claim is settled.

Shortages

- All shortages must be reported within 5 days of receiving the order.
- Check the number of cartons delivered with the quantity shown on the receipt.
- If quantities do not match the cartons delivered and the quantity shown on the receipt please have delivery person note the shortage. If missing items do not show up with in a few days of receiving your shipment please contact NDT Solutions Inc. and we will re-ship your order.

Important Notice on Returning Goods

- Before returning any goods please contact NDT Solutions Inc.

All returned goods must have a return number, which you will receive after contacting NDT Solutions. All shipments not having this number will be refused.

Warranty Information

Copyright Notice - The contents of this catalog are the property of NDT Solutions and EC-NDT. Any redistribution or reproduction of part or all of the contents in any form is prohibited. ©NDTS and EC-NDT. All rights reserved.

Eddy Current Probe Catalog

Introduction

Every section in this probe catalog begins with a short description of the different eddy current products available. This section gives a short description on how to build a probe part number. Each eddy current probe available from NDTs has a unique code. These codes can be used to order the desired probe configuration. When ordering always indicate the instrument to be used and the preferred connector type. In the "How to Order" section of each probe page you will find the correct format to use when building your own probe/part number. If you have questions or concerns please call NDTs at (715) 246-0433.

Connector Identification Chart

Nortec 1000, 2000 & 500 (16 Pin Lemo)



M12-21 (4 Pin Fischer)

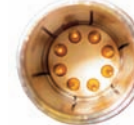


Nortec NDT-18 & 19 (8 Pin Burndy)



Differential Reflection

8 Pin Fischer/Elotest



Phasec 2d & 2200 (12 Pin Lemo)



Locator 2 (7 Pin Lemo)



PS-5 Connector



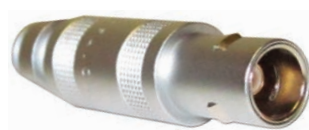
Microdot



2 Pin Microdot



Triax Lemo



4 Pin Switchcraft



MAUS Connector



3 Pin Din Defectometer



MIZ-20 & 22 (4 Pin Cannon)



Phasec 1.1 (6 Pin Jaeger)



Probe Kits

NDT Solutions Inc. specializes in making custom probe kits which are designed to meet our customers needs & specifications. We customize each kit/order to meet all budget requirements.

Reference Standards

- Boeing
- Lockheed
- Airbus
- Pratt & Whitney
- Eddy Current
- Custom EDM Notching
- Re-Certify Old Standards
- Sikorsky
- Bell Helicopter
- General Electric
- Ultrasonic



Interconnecting Cables & Adapters

- Ultrasonic
- Eddy Current

The Last and Only Probe Kit(s) You Will Ever Need!

- Titanium wear surface option for extended durability and life
- Every size, shape, form and fit probe you will need.
- Certified and calibrated for use on aluminum, steel and titanium. Also available in magnesium, inconel, stainless steel, etc.
- The highest sensitivity and lowest noise ratio available.
- A multitude of frequency ranges.
- Compatible for all Eddy Current testers

HOW TO ORDER

Order on-line at www.ndts.com.

Please contact NDT Solutions at (715) 246-0433 with your inspection requirements and we will build a custom probe kit to fit your needs, requirements and budgetary goals.

Eddy Current Probe Catalog

Probe Kits (continued)

Our Most Popular Probe Kits

The following probe kits are custom probe kits which are most popular with our customers and in the field of NDT. Each of these kits are designed to meet the needs of our customers and their business. If you are looking for a specialty kit please give us a call and we would be happy to help you design the kit which will meet your needs and your budget.



Probe Kit SPCK-363/N2K

(Manual Bolt Hole Kit)

QTY	Part Type	Probe Type
1	Probe	MBAB1-.875
1	Probe	MBAB1-.625
1	Probe	MBAB1-.437
1	Probe	MBAB1-.312
1	Probe	MBAB1-.250
1	Probe	MBAB1-.156
1	Probe	MBAB1-.750
1	Probe	MBAB1-.500
1	Probe	MBAB1-.375
1	Probe	MBAB1-.281
1	Probe	MBAB1-.187
1	Probe	MBAB1-.125
1	Cable	EC-N2K-TL-6
1		Form Fitted Pelican Kit Box

Probe Kit SPCK-374

(Universal Scanner Probe Kit)

QTY	Part Type	Probe Type
1	Probe	SO6R4-.156-.187
1	Probe	SO6R4-.187-.250
1	Probe	SO6R4-.250-.312
1	Probe	SO6R4-.312-.375
1	Probe	SO6R4-.375-.437
1	Probe	SO6R4-.437-.500
1	Probe	SO6R4-.500-.625
1	Probe	SO6R4-.625-.750
1	Probe	SO6R4-.750-.875
1	Probe	SO6R4-.875-.1.00
1		Form Fitted Pelican Kit Box

Probe Kits (continued)

Probe Kit SPCK-135/N2K

(Surface Eddy Current Probe Kit)

QTY	Part Type	Probe Type
1	Probe	PAUB30602FX
1	Probe	PAUB90602FX
1	Standard	ECRS-08245-4/4340
1	Cable	EC-N2K-TL-6
1		Form Fitted Pelican Kit Box



Probe Kit SPCK-228

(Low Frequency Ring Probe Kit)

QTY	Part Type	Probe Type	Coil	Diameter	Size	Frequency
1	Probe	SPC-365R-.187	Reflection	3/16	4.76mm	100Hz-10KHz
1	Probe	SPC-365R-.250	Reflection	1/4	6.35mm	100Hz-10KHz
1	Probe	SPC-365R-.312	Reflection	5/16	7.9mm	100Hz-10KHz
1	Probe	SPC-365R-.375	Reflection	3/8	9.5mm	100Hz-10KHz
1	Probe	SPC-365R-.437	Reflection	7/16	11.11mm	100Hz-10KHz
1	Probe	SPC-365R-.500	Reflection	1/2	12.7mm	100Hz-10KHz
1	Probe	SPC-365R-.625	Reflection	5/8	15.88mm	100Hz-10KHz
1	Probe	SPC-365R-.750	Reflection	3/4	19mm	100Hz-10KHz
1	Cable	EC-RN2K-TL-6				
1	Probe	Form Fitted Pelican Kit Box				

Eddy Current Probe Catalog

Probe Kits (continued)

Probe Kit SPCK-367/N2K

(This is a General Purpose Surface Probe Kit)

QTY	Part Type	Probe Type	Frequency
2	Cable	EC-N2K-TL-6	
2	Cable	EC-RN2K-TL-6	
1	Probe	PAB0080FX	50-500KHz
1	Probe	PAB90602	50-500KHz
1	Probe	PAB90601	50-500KHz
1	Probe	PABM90402/.072	50-500KHz
1	Probe	PAB0050	50-500KHz
1	Probe	PAB45605	50-500KHz
1	Probe	PAB90605	50-500KHz
1	Probe	PAB90602FX	50-500KHz
1	Probe	PAB90602FX	500KHz-2MHz
1	Probe	PAB0080FX	500KHz-2MHz
1	Probe	PAB90602	500KHz-2MHz
1	Probe	PAB90601	500KHz-2MHz
1	Probe	PABM90402/.072	500KHz-2MHz
1	Probe	PAB0050	500KHz-2MHz
1	Probe	PAB45605	500KHz-2MHz
1	Probe	PAB90605	500KHz-2MHz
1	Scanner Probe	SO6R2-.750-5FX	100KHz-1MHz
1	Scanner Probe	SO6R2-.687-5FX	100KHz-1MHz
1	Scanner Probe	SO6R2-.625-5FX	100KHz-1MHz
1	Scanner Probe	SO6R2-.562-5FX	100KHz-1MHz
1	Scanner Probe	SO6R2-.500-5FX	100KHz-1MHz
1	Scanner Probe	SO6R2-.437-5FX	100KHz-1MHz
1	Scanner Probe	SO6R2-.375-5FX	100KHz-1MHz
1	Scanner Probe	SO6R2-.312-5FX	100KHz-1MHz
1	Scanner Probe	SO6R2-.250-5FX	100KHz-1MHz
1	Scanner Probe	SO6R2-.750-5FX	500KHz-2MHz
1	Scanner Probe	SO6R2-.687-5FX	500KHz-2MHz
1	Scanner Probe	SO6R2-.625-5FX	500KHz-2MHz
1	Scanner Probe	SO6R2-.562-5FX	500KHz-2MHz
1	Scanner Probe	SO6R2-.500-5FX	500KHz-2MHz
1	Scanner Probe	SO6R2-.437-5FX	500KHz-2MHz
1	Scanner Probe	SO6R2-.375-5FX	500KHz-2MHz
1	Scanner Probe	SO6R2-.312-5FX	500KHz-2MHz
1	Scanner Probe	SO6R2-.250-5FX	500KHz-2MHz
		Form Fitted Pelican Kit Box	
1	Scanner Probe	SO6R4-.750	100KHz-1MHz
1	Scanner Probe	SO6R4-.687	100KHz-1MHz
1	Scanner Probe	SO6R4-.625	100KHz-1MHz



Probe Kit SPCK-367/N2K (continued)

(This is a General Purpose Surface Probe Kit)

QTY	Part Type	Probe Type	Frequency
1	Scanner Probe	SO6R4-.562	100KHz-1MHz
1	Scanner Probe	SO6R4-.500	100KHz-1MHz
1	Scanner Probe	SO6R4-.437	100KHz-1MHz
1	Scanner Probe	SO6R4-.375	100KHz-1MHz
1	Scanner Probe	SO6R4-.312	100KHz-1MHz
1	Scanner Probe	SO6R4-.250	100KHz-1MHz
1	Scanner Probe	SO6R4-.750	500KHz-2MHz
1	Scanner Probe	SO6R4-.687	500KHz-2MHz
1	Scanner Probe	SO6R4-.625	500KHz-2MHz
1	Scanner Probe	SO6R4-.562	500KHz-2MHz
1	Scanner Probe	SO6R4-.500	500KHz-2MHz
1	Scanner Probe	SO6R4-.437	500KHz-2MHz
1	Scanner Probe	SO6R4-.375	500KHz-2MHz
1	Scanner Probe	SO6R4-.312	500KHz-2MHz
1	Scanner Probe	SO6R4-.250	500KHz-2MHz
1	Probe	PAR16-90605	1-20KHz
1	Spot Probe	LFSR-.500/TM	200Hz-2KHz
1	Spot Probe	LFSR-.437/TM	500Hz-5KHz
1	Spot Probe	LFSR-.310/TM	1-50KHz
1	Spot Probe	LFSR-.250/TM	1-50KHz
1	Standard	ECRS-0824/AL	
1	Standard	ECRS-0824/Ti	
1	Standard	ECRS-0824-S4/4340	

Probe Kits (continued)

Probe Kit SPCK-229

(Manual Bolt Hole Kit)

QTY	Part Type	Probe Type	Size
1	Probe	MBA1-10	5/32"
1	Probe	MBA1-12	3/16"
1	Probe	MBA1-14	7/32"
1	Probe	MBA1-16	1/4"
1	Probe	MBA1-18	9/32"
1	Probe	MBA1-20	5/16"
1	Probe	MBA1-22	11/32"
1	Probe	MBA1-24	3/8"
1	Probe	MBA1-26	13/32"
1	Probe	MBA1-28	7/16"
1	Probe	MBA1-30	15/32"
1	Probe	MBA1-32	1/2"
1	Probe	MBA1-34	17/32"
1	Probe	MBA1-36	9/16"
1	Probe	MBA1-38	19/32"
1	Probe	MBA1-40	5/8"
1	Probe	MBA1-42	21/32"
1	Probe	MBA1-44	11/16"
1	Probe	MBA1-46	23/32"
1	Probe	MBA1-48	3/4"
1	Probe	MBA1-50	25/32"
1	Probe	MBA1-52	13/16"
1	Probe	MBA1-54	27/32"
1	Probe	MBA1-56	7/8"
1	Probe	MBA1-58	29/32"
1	Probe	MBA1-60	15/16"
1	Probe	MBA1-62	31/32"
1	Probe	MBA1-64	1"
1		Form Fitted Pelican Kit Box	
Add "1" for Universal Bolt Hole Probe Kit			
Add "IRA" for RA Scanner Bolt Hole Probe Kit			

Probe Kit SPCK-218

(General Purpose Surface Probe Kit)

QTY	Part Type	Probe Type
1	Probe	PAB0060/AL (50-500K)
1	Probe	PAB90505/AL (50-500K)
1	Probe	PAB90505/Ti (1-3 MHz)
1	Probe	PAB90305/AL (50-500)
1	Probe	PAB0030/Ti (1-3MHz)
1	Probe	PAB0020/AL (50-500K)
1	Ref. Std.	ECRS-0824/AL
1	Ref. Std.	ECRS-0824/Ti
1	Ref. Std.	ECRS-0824/MAG
1	Cable	EC-N2K-TL-6
1		Form Fitted Pelican Kit Box

Probe Kit SPCK-330

(General Purpose Surface Probe Kit)

QTY	Part Type	Probe Type
1	Probe	PAB0040
1	Probe	PAB0080FX
1	Probe	PAB90605
1	Probe	PAB90602
1	Probe	PAB90C601
1	Probe	PAB45502
1	Probe	PAB90605FX
1	Probe	PAB90802FX
1	Cable	EC-N2K-TL-6
1	Ref. Std.	ECRS-0824/AL
1		Form Fitted Pelican Kit Box

(Kit pictures unavailable at this time)

HOW TO ORDER

Order on-line at www.ndts.com.

Please contact NDT Solutions at (715) 246-0433 with your inspection requirements and we will build a custom probe kit to fit your needs, requirements and budgetary goals.

Eddy Current Probe Catalog

Sizing Table

Size	Fraction	Decimals	Millimeters
1	1/64	.0156	0.396
2	1/32	.0312	0.793
3	3/64	.0468	1.190
4	1/16	.0626	1.587
5	5/64	.0781	1.984
6	3/32	.0937	2.381
7	7/64	.1093	2.778
8	1/8	.125	3.175
9	9/64	.1406	3.571
10	5/32	.1562	3.968
11	11/64	.1718	4.365
12	3/16	.1875	4.762
13	13/64	.2031	5.159
14	7/32	.2187	5.556
15	15/64	.2343	5.953
16	1/4	.250	6.350
17	17/64	.2656	6.746
18	9/32	.2812	7.143
19	19/64	.2968	7.540
20	5/16	.3125	7.937
21	21/64	.3281	8.334
22	11/32	.3437	8.731
23	23/64	.3593	9.128
24	3/8	.375	9.525
25	25/64	.3906	9.921
26	13/32	.4062	10.318
27	27/64	.4218	10.715
28	7/16	.4375	11.112
29	29/64	.4531	11.509
30	15/32	.4687	11.906
31	31/64	.4843	12.303
32	1/2	.500	12.700

Size	Fraction	Decimals	Millimeters
33	33/64	.5156	13.096
34	17/32	.5312	13.493
35	35/64	.5468	13.890
36	9/16	.5626	14.287
37	37/64	.5781	14.684
38	19/32	.5937	15.081
39	39/64	.6093	15.478
40	5/8	.625	15.875
41	41/64	.6406	16.271
42	21/32	.6562	16.668
43	43/64	.6718	17.065
44	11/16	.6875	17.462
45	45/64	.7031	17.859
46	23/32	.7187	18.256
47	47/64	.7343	18.653
48	3/4	.750	19.050
49	49/64	.7556	19.446
50	25/32	.7812	19.843
51	51/64	.7968	20.240
52	13/16	.8125	20.637
53	53/64	.8281	21.034
54	27/32	.8437	21.431
55	55/64	.8593	21.828
56	7/8	.875	22.225
57	57/64	.8906	22.621
58	29/32	.9062	23.018
59	59/64	.9218	23.415
60	15/16	.9375	23.812
61	61/64	.9531	24.209
62	31/32	.9687	24.606
63	63/64	.9843	25.003
64	1	1.000	25.4

HF Surface Probes

High frequency surface probes are available in various shielded or unshielded designs and frequencies. These probes are commonly used for surface crack detection.



Probe Configuration

1. Probe Type

Shielded	P
Absolute Bridge, Quick Disconnect	PAB
For unshielded add U to part number E.g. Absolute Unshielded	PAU
Defectometer (Ferrous)	PDF
Defectometer (Non-Ferrous)	PDN
Defectometer (Non-Ferrous Shielded)	PDNS

2. Probe Tip Diameter

Default diameter of HF probes = 0.125
For an unshielded Mini Tip the diameter is from .035 to .072
For a shielded Mini Tip the diameter is from .072 to .125
Add M to front of part # and /0.00 for the diameter you request at the end of part number

3. Coil

Differential	D
Reflection	R
Absolute	A
Absolute Bridge	AB
Absolute Reflection	AR
Bridge Differential	BD

4. Angle

Straight	00
45 Degrees	45
Right Angle	90

5. Bend at Handle Angle

Straight (Default)	
Bend (At Handle)	B
Crank (1" from Coil End Side)	C

6. Length (WL)

Probe length is 0.1" from handle end to shaft coil end
--

7. Probe Drop

0.100"
0.200"
0.300"
0.400"
0.500"
0.600"
0.700"
Custom Drop

8. Shaft

Stainless (Default)	
Copper (Flexible)	FX

9. Frequency

Probe frequency, either fixed or range 50-500KHz (Default) 200KHz (Center Frequency) 500KHz - 1MHz, 1-3MHz
--

10. Protective Tip

Protects the wear on the coil - add TT at end of part #

HOW TO ORDER

Order on-line at www.ndts.com. Construct your part number as described in this section, or contact NDTs at (715) 246-0433 with a description of your desired probe configuration.

1. Probe Type	2. Probe Tip Diameter	3. Coil	4. Angle	5. Bend at Handle	6. Length	7. Drop	8. Shaft	9. Frequency	10. Protective Tip
---------------	-----------------------	---------	----------	-------------------	-----------	---------	----------	--------------	--------------------

For Example: A shielded surface probe, with an absolute bridge, 90 degrees, cranked, 6 inches long, drops .4 and is copper - the Part # would be: PAB90C604FX

Eddy Current Probe Catalog

Manual Bolt Hole Probes

These probes are used for manual testing of bolt holes.

Probe Configuration

1. Probe Type

Manual Bolt Hole Probe	MB
Defectometer Ferrous	MBDF
Defectometer Non-Ferrous Unshielded	MBDN
Defectometer Non-Ferrous Shielded	MDDNS



2. Coil

Differential - Quick Disconnect	D
Reflection	R
Absolute	A
Absolute Bridge - Quick Disconnect	AB
Absolute Reflection	AR
Bridge Differential	BD

3. Probe Shape

Split End (Single Sized)	1
Self Expanding (Spread)	2
Screw Adjustable (Spread)	3
Add S to number if depth gage is used - Collar default length is 1"	

4. Diameter (Head Size)

Default in inches, see Table 1
For metric add M to end of part #

5. Frequency

Default frequency is 100 kHz - 1 MHz
Provide frequency range or desired frequency

6. Working Length (WL)

Default = 2 inches or in case of metric = 50mm
Indicate required length if not default in inches or mm, length measured from probe end to coil

HOW TO ORDER

Order on-line at www.ndts.com. Construct your part number as described in this section, or contact NDTs at (715) 246-0433 with a description of your desired probe configuration.

1. Probe Type	2. Coil	3. Probe Shape	-	4. Diameter	/	5. Frequency	/	6. Working Length	Metric
----------------------	----------------	-----------------------	---	--------------------	---	---------------------	---	--------------------------	---------------

For Example: A manual bolt hole probe, differential, split end, .156 head size, 3 inches, the part # would be: MBD1-.156/3WL
Example #2: A manual bolt hole probe, absolute, split end, with a diameter of .156, and 3 inches working length, the part # would be: MBA1-.156/3WL

Rotating Scanner Probes

Scanner probes are eddy current probes used in combination with an automated rotator, which is attached to an eddy current instrument. High speed testing of bolt holes, counter bores, the hole perimeter or around fasteners heads are a typical application for these types of probes. Several designs and materials are possible depending on the application the probes are used in. EC/NDT has many different designs available for all rotating guns on the market. If a standard design does not fit your application we will manufacture a probe according to your specifications/requirements.

Rotating Scanner Bolt Hole Probes

Bolt hole probes are used to scan the inside of a bore for cracks. Many different designs and coil types are available to meet your inspection requirements.



Probe Configuration

1. Probe Type

Rechii Scanner Probe (Plastic Design)	S
Stainless Steel Scanner Probe	SS
For unshielded design of above probes, add U	SU, SSU
For flexible shaft design probes, add FX	SFX, SUFX, etc.

2. Equipment Manufacturer

Nortec	0
Zetec	1
Physical Acoustic	2
Rohmann	3
Foerster	4
Hocking	5
Uniwest	6
Gulton	7

3. Scanner Model

Nortec RA	0
Nortec RA2	1
Nortec PS2/3	2
Nortec PS4	4
Nortec PS5	5
Zetec Standard	0
Physical Acoustics Standard	0
Rohmann Standard	0
Rohmann Mini	1
Foerster	0
Foerster	1
Hocking Mini	1
Uniwest Standard	0
Gulton Standard	0
Universal Mini	1

4. Coil

Differential	D
Reflection	R
Absolute	A
Absolute Reflection	AR
Absolute Bridge	AB

Default Coil Types Are:

Nortec PS2/3	Differential
Nortec RA, RA2, PS4, PS5	Reflection
Zetec Default	Differential
Physical Acoustics Default	Differential
Rohmann Default	Reflection
Foerster Default	Reflection
Hocking Default	Reflection
Uniwest Default	Differential
Gulton Default	Absolute
Universal	Reflection

Eddy Current Probe Catalog

Rotating Scanner Probes (continued)

5. Probe Model

Perimeter Probes	HP
Fastener Head Probes	FP
Solid	0
Split End	1
Self Expanding	2
Screw Adjustable	3
Collar Adjustable Shaft	4

6. Diameter

Default in inches, see Table 1
 For metric add M to end of part #
 In case of fixed diameter e.g. S100/16
 In case of diameter range e.g. S102/16-20

7. Working Length (WL)

Default = 2 inches or in case of metric = 50mm
 Indicate required length if not default in inches or mm

8. Frequency

Probe frequency, either fixed or range

HOW TO ORDER

Order on-line at www.ndts.com. Construct your part number as described in this section, or contact NDTs at (715) 246-0433 with a description of your desired probe configuration.

1. Probe Type	2. Equipment Manufacturer	3. Scanner Model	4. Coil	5. Probe Model	/	6. Diameter	/	7. Working Length	M'	/	8. Frequency
---------------	---------------------------	------------------	---------	----------------	---	-------------	---	-------------------	----	---	--------------

¹For metric sizes add M to end of part #

For Example: A Rechi Scanner Probe, Lemo 1/2 moon connector, Refl., Collar Adjustable Shaft, the part # would be: S00R4

Rotating Scanner Countersink Probes

Scanner countersink probes are used to scan the countersink area of a bore for cracks. Many different designs and coil types are available to meet your inspection requirements.



Probe Configuration

1. Probe Type

Scanner Probe (Plastic Design)	SC
Stainless Steel Scanner Probe	SSC
For unshielded design of above probes, add U	SCU, SSCU
For flexible shaft design probes, add FX	SCFX, SCUFX, etc.

2. Equipment Manufacturer

Nortec	0
Zetec	1
Physical Acoustic	2
Rohmann	3
Foerster	4
Hocking	5
Uniwest	6
Gulton	7
Universal	8

Rotating Scanner Countersink Probes (continued)

3. Scanner Model

Nortec RA	0
Nortec RA2	1
Nortec PS2/3	2
Nortec PS4	4
Nortec PS5	5
Zetec Standard	0
Physical Acoustics Standard	0
Rohmann Standard	0
Rohmann Mini	1
Foerster Standard	0
Foerster Mini	1
Hocking Mini	1
Uniwest Standard	0
Gulton Standard	0
Universal Mini	1

4. Coil

Differential	D
Reflection	R
Absolute	A
Absolute Reflection	AR
Absolute Bridge	AB

Default Coil Types Are:

Nortec PS2/3	Differential
Nortec RA, RA2, PS4, PS5	Reflection
Zetec Default	Differential
Physical Acoustics Default	Differential
Rohmann Default	Reflection
Foerster Default	Reflection
Hocking Default	Reflection
Uniwest Default	Differential
Gulton Default	Absolute
Universal	Reflection

5. Angle

Standard (Degrees)	100
--------------------	-----

6. Diameter

Default in inches, see Table 1 For metric add M to end of part #

7. Working Length (WL)

Default = 2 inches or in case of metric = 50mm Indicate required length if not default in inches or mm

8. Frequency

Probe frequency, either fixed or range
--

HOW TO ORDER

Order on-line at www.ndts.com. Construct your part number as described in this section, or contact NDTs at (715) 246-0433 with a description of your desired probe configuration.

1. Probe Type	2. Equipment Manufacturer	3. Scanner Model	4. Coil	5. Angle	/	6. Diameter	/	7. Working Length	M ¹	/	8. Frequency
---------------	---------------------------	------------------	---------	----------	---	-------------	---	-------------------	----------------	---	--------------

¹For metric sizes add M to end of part #

For Example: A Nortec equipment with a Universal Scanner Gun, the part # would be: SC01R100-.312

Eddy Current Probe Catalog

LF Spot Probes

The LF Spot Probes are general purpose probes for most applications. They are used for sub-surface defect detection, fatigue cracks, and metal thinning due to corrosion.

Probe Configuration

1. Probe Type

LF Spot Probe	LF
---------------	----

2. Connector Location

Side Connection (Default)	S
Top Mount	T

3. Coil

Differential	D
Reflection	R
Bridge Differential	BD
Absolute	A
Absolute Bridge	AB

4. Diameter

Diameter of probe is 0.1" or when metric in mm
--



5. Metric

When diameter in metric add M

6. Connector

Lemo Quick Disconnect (Default)
Other connectors available upon request

7. Frequency

Provide frequency range or desired frequency
--

HOW TO ORDER

Order on-line at www.ndts.com. Construct your part number as described in this section, or contact NDTs at (715) 246-0433 with a description of your desired probe configuration.

1. Probe Type	2. Connector Location	3. Coil	-	4. Diameter	5. Metric	/	6. Connector	/	7. Frequency
----------------------	------------------------------	----------------	---	--------------------	------------------	---	---------------------	---	---------------------

For Example: A LF Spot Probe with a top mount, absolute bridge. The part # would be: LFTAB-.54

LF Ring Probes

The Ring Probes are used for crack detection around installed fastener heads. These probes are made to fit various fastener head diameters.

Probe Configuration

1. Probe Type

LF Ring Probe	LF
---------------	----

2. Coil

Differential	D
Reflection	R
Bridge Differential	BD
Absolute	A
Absolute Bridge	AB

3. Connector Location

Side Mounted (Default)	S
Top Mount	T

4. ID-OD

Add desired diameters, default in inches
--

5. Metric

When diameter in metric add M



6. Connector

Lemo Quick Disconnect (Default)
Other connectors available upon request

7. Frequency

Provide frequency range or desired frequency
--

8. Material

Aluminum
Steel
Titanium

HOW TO ORDER

Order on-line at www.ndts.com. Construct your part number as described in this section, or contact NDTs at (715) 246-0433 with a description of your desired probe configuration.

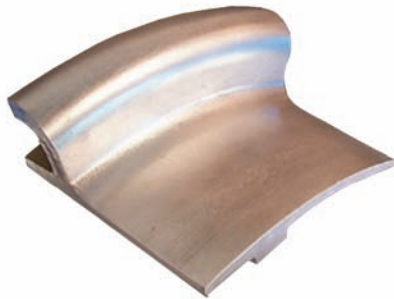
1. Probe Type	2. Coil	3. Connector Location	4. ID-OD	5. Metric	/	6. Connector	/	7. Frequency	8. Material
---------------	---------	-----------------------	----------	-----------	---	--------------	---	--------------	-------------

(For Example: A LF Ring Probe, Reflection, Top Mount. The part # would be: LFRT)

Eddy Current Probe Catalog

Moulded Wheel Probes and Wheel Standards

These probes are designed to scan complex shapes and maintain good contact to surface on large areas. These probes are, for example, used to scan the bead seat area of aircraft wheels. Complete aircraft wheel inspection kits are available for many different aircraft types. All other special design moulded probes will be coded as a special. See section "Special Probes" for more detailed information.



SPCK-214/T1
T1 Wheel Probe Kit -
Nose and Main

Wheel Probe Configuration

1. Probe Type

Wheel Probe	WP
Wheel Standard	SS

2. Location

Main	M
Nose	N
Kit (Kit includes all probes and reference standards needed for aircraft type)	K

3. Aircraft Type

Indicate aircraft manufacturer's code, if not available contact NDT Solutions, Inc.	
Aerospatial (ATR-1)	E
Airbus	A
Boeing	B
Bombardier	O
British Aerospace	BA
Cessna	C
Dehavilland	D
Embraer	M
Fokker	F
Gulfstream	G
Lockheed	L
McDonnell Douglas	MD
Northrop	C
Pilatus	P
Saab	S

4. Aircraft Type Indication

The aircraft type indication e.g., Dash 8, 737, MD80
--

5. Connector

Lemo Quick Disconnect (Default)
Other connectors available upon request

HOW TO ORDER

Order on-line at www.ndts.com. Construct your part number as described in this section, or contact NDTs at (715) 246-0433 with a description of your desired probe configuration.

1. Probe Shape	2. Location	-	3. Aircraft Type	4. Aircraft Type Indication	5. Connector
-----------------------	--------------------	---	-------------------------	------------------------------------	---------------------

For Example: A Moulded Wheel Probe for the nose of a Boeing aircraft. The part # would be: WPN-B737

Moulded Wheel Probes and Wheel Standards (continued)

The following are examples of wheel probes and wheel standards which we build. However, there are many different types of aircraft. It is important to know we design wheel probes and wheel standards for all current aircraft. If there is an aircraft you are looking for but do not see it on this list please contact us at (715) 246-0433 or through our website at sales@ndts.com. We would be happy to assist you with your specific request.

Aircraft	Wheel Probe Placement - Main	Wheel Probe Placement - Nose	Wheel Standard Placement - Main	Wheel Standard Placement - Nose
B-717	WPM-B717	WPN-B717	WSM-B717	WSN-B717
B-727	WPM-B727	WPN-B727	WSM-B727	WSN-B727
B-737	WPM-B737	WPN-B737	WSM-B737	WSN-B737
B-747	WPM-B747	WPN-B747	WSM-B747	WSN-B747
B-757	WPM-B757	WPN-B757	WSM-B757	WSN-B757
B-767	WPM-B767	WPN-B767	WSM-B767	WSN-B767
A-320	WPM-A320	WPN-A320	WSM-A320	WSN-A320
DC-9	WPM-DC9	WPN-DC9	WSM-DC9	WSN-DC9
DC-10	WPM-DC10	WPN-DC10	WSM-DC10	WSN-DC10
MD-80	WPM-MD80	WPN-MD80	WSM-MD80	WSN-MD80
Dash 8	WPM-Dash8	WPN-Dash8	WSM-Dash8	WSN-Dash8
KC-135	WPM-KC135	WPN-KC135	WSM-KC135	WSN-KC135
B-52	WPM-B52	WPN-B52	WSM-B52	WSN-B52
F-15C, D	WPM-F15CD	WPN-F15CD	WSM-F15CD	WSN-F15CD
F-15E	WPM-F15E	WPN-F15E	WSM-F15E	WSN-F15E
F-16	WPM-F16	WPN-F16	WSM-F16	WSN-F16
A-6	WPM-A6	WPN-A6	WSM-A6	WSN-A6
A-10	WPM-A10	WPN-A10	WSM-A10	WSN-A10
UH-60	WPM-UH60	WPN-UH60	WSM-UH60	WSN-UH60
B-717	WPM-B717	WPN-B717	WSM-B717	WSN-B717
KC-135/CB Carbon Brake	WPM-KC135/CB	WPN-KC135/CB	WSM-KC135/CB	WSN-KC135/CB
H46-2/CB Carbon Brake	WPM-H462/CB	WPN-H462/CB	WSM-H462/CB	WSN-H462/CB

It is helpful when building a wheel probe and/or reference standard, for our specialists to have a sample of the wheel you will be using the probe and standard on. If you have a sample please indicate that on your order or tell one of our representatives when placing your order. Thank you.

Eddy Current Probe Catalog

Sliding Probes

Sliding probes provide an easy and quick method of scanning smooth surfaces to detect surface and subsurface cracks. These probes are mostly used to scan fastener rows. Probes can be designed to meet your specific inspection requirements.

Probe Configuration

1. Probe Type

Probe Type	GP
------------	----

2. Shape

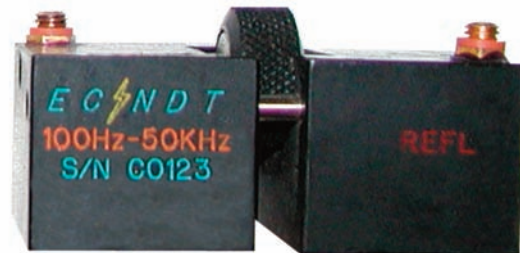
Fixed Size	F
Adjustable Size	A
Wheel Adjustable	WA

3. Length

Length of probe, in case of adjustable sliding probes the minimum size
--

4. Width

Fixed Size	F
Adjustable Size	A
Wheel Adjustable	WA



5. Metric

When ID and OD in metric add M

6. Connector

Lemo Quick Disconnect (Default)
Other connectors available upon request

7. Frequency

Add frequency range or desired frequency
--

HOW TO ORDER

Order on-line at www.ndts.com. Construct your part number as described in this section, or contact NDTs at (715) 246-0433 with a description of your desired probe configuration.

1. Probe Type	2. Shape	-	3. Length	4. Width	5. Metric	-	6. Connector	7. Frequency
----------------------	-----------------	---	------------------	-----------------	------------------	---	---------------------	---------------------

For Example: A Sliding Probe, fixed size, 2 inches long, fixed width. The part # would be: GPF-2F

Blade Probes

Blade probes provide an easy access in narrow slots or gaps between structures detect surface anomalies. Both sides of the probe are sensitive for defects.

Probe Configuration

1. Probe Type

Shielded Blade Probe	BL
For unshielded add U to part # e.g. Absolute Unshielded	BLAU
Defectometer (Ferrous)	BLDF
Defectometer (Non-Ferrous)	BLDN
Defectometer (Non-Ferrous Shielded)	BLDNS
For side mounded coil, change BL into BLS	

2. Coil

Differential	D
Reflection	R
Absolute	A
Absolute Reflection	AR
Absolute Bridge	AB

3. Angle

Straight	00
30 Degrees, etc.	30
Right Angle or Indicate Desired Angle	90

4. Thickness (T)

3 Standard Thickness's are available: 0.8", 0.06", 0.04"



5. Working Length (WL)

Default = 2 inches or in case of metric = 50mm Indicate required length if not default in inches or mm

6. Connector

Default connector is Tri-Axial Fischer	TF
--	----

7. Frequency

Add frequency range or desired frequency
--

HOW TO ORDER

Order on-line at www.ndts.com. Construct your part number as described in this section, or contact NDTs at (715) 246-0433 with a description of your desired probe configuration.

1. Probe Type	2. Coil	3. Angle	-	4. Thickness^t	5. Working Length	/	6. Connector	/	7. Frequency
----------------------	----------------	-----------------	---	---------------------------------	--------------------------	---	---------------------	---	---------------------

For Example: A shielded blade probe, absolute bridge, straight, with .08" thickness. The part # would be: BLAB00-.08

Eddy Current Probe Catalog

Finger Probes

Finger probes are surface probes that can be handled by sliding a finger in the handle. This gives the possibility to scan areas that are difficult to access and remain in good contact with the surface.

Probe Configuration

1. Probe Type

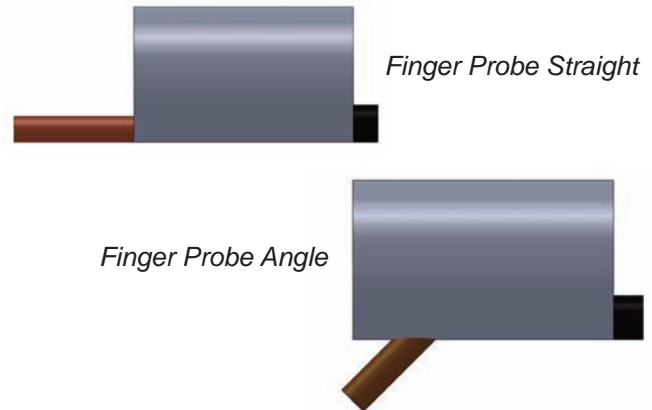
Finger Probe Shielded	FSPFSP
For unshielded add U to part # e.g. Absolute Unshielded	FSPAU
Defectometer (Ferrous)	FSPDF
Defectometer (Non-Ferrous)	FSPDN
Defectometer (Non-Ferrous Shielded)	FSPDNS

2. Coil

Differential	D
Reflection	R
Absolute	A
Absolute Reflection	AR
Absolute Bridge	AB

3. Angle

Straight	00
30 Degrees, etc.	30
Right Angle	90



4. Drop or Working Length

In terms of drop	0.1D
In terms of length	1.0D

5. Connector

Microdot (Default)
Indicate connector type if not default

6. Frequency

Add frequency range or desired frequency
--

HOW TO ORDER

Order on-line at www.ndts.com. Construct your part number as described in this section, or contact NDTs at (715) 246-0433 with a description of your desired probe configuration.

1. Probe Type	2. Coil	3. Angle	-	4. Drop	/	5. Connector	/	6. Frequency
----------------------	----------------	-----------------	---	----------------	---	---------------------	---	---------------------

For Example: A finger probe, absolute bridge, straight, with .1 drop. The part # would be: FSPFSPAB00-.01

To order: sales@ndts.com / 715.246.0433



Spring Loaded Probes

Spring loaded probes are used when a constant pressure of the probe on the surface is required. This will give a high repeatability of your inspection.

Probe Configuration

1. Probe Type

Spring Loaded Probe	SLP
---------------------	-----

2. Coil

Differential	D
Reflection	R
Absolute	A
Absolute Bridge	AB

3. Diameter

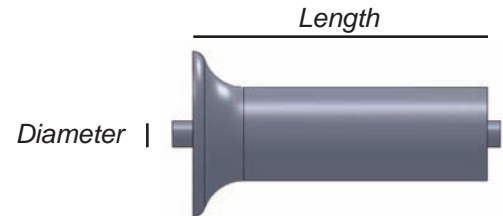
Diameter of surface area

4. Length

Length of holder

1. Probe Type	2. Coil	3. Diameter	4. Length	5. Metric	/	6. Connector	/	7. Frequency
---------------	---------	-------------	-----------	-----------	---	--------------	---	--------------

For Example: A spring loaded probe, absolute bridge, with a diameter of .025 and a length of two inches. The part # would be SLPAB.0252



5. Metric

If diameter and length are provided in metric add M

6. Connector

Lemo Quick Disconnect (Default)
Other connectors available upon request

7. Frequency

Add frequency range or desired frequency
--

Delrin Surface Probes

Unshielded "pencil" type probe for surface crack detection.

Probe Configuration

1. Probe Type

Tip Diameter 1/4"	DSS
Tip Diameter 1/8"	DSM

2. Coil

Differential	D
Reflection	R
Absolute	A
Absolute Bridge	AB
Absolute Reflection	AR

3. Length

Length of holder, default in inches

1. Probe Type	2. Coil	3. Length	4. Metric	/	5. Connector	/	6. Frequency
---------------	---------	-----------	-----------	---	--------------	---	--------------

For Example: A delrin surface probe with a tip diameter of 1/4", absolute bridge, two inches long. The part # would be DSSAB2



4. Metric

If diameter and length are provided in metric add M

5. Connector

Lemo Quick Disconnect (Default)
Other connectors available upon request

6. Frequency

Add frequency range or desired frequency
--

Eddy Current Probe Catalog

Specials

Specially designed probes are available for all your applications. Since the design meets a special requirement the probe identification will be given by NDT Solutions, Inc. and EC/NDT.

Probe Configuration

1. Probe Type

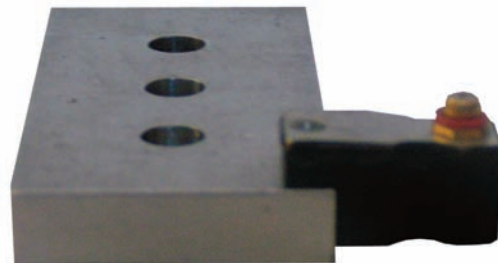
Special	SPC
---------	-----

2. Number

Scanning Probes	1
Manual Bolt Hole Probes	2
HF Surface Probes	3
LF Spot Probes	4
LF Ring Probes	5
Sliding Probes	6
Moulded Probes	7
Spring Loaded Probes	8
Finger Probes	9
Delrin Probes	10
Blade probes	11

3. Connector

Lemo Quick Disconnect (Default)	
Tri Axial Fischer	TF
Microdot	M
2 Pin Microdot	2P
4 Pin Fisher for Reflection Elotest Type	4F



4. Drawing Index

Added for internal administrative purposes
--

5. Frequency

Frequency range or desired frequency

HOW TO ORDER

Order on-line at www.ndts.com. Contact NDT Solutions at (715) 246-0433 for help constructing your part number. Have your inspection requirements ready and we will help construct a part number to fit your needs and budgetary goals.

Other Eddy Current Products

NDT Solutions, Inc. is a leading provider of Eddy Current testing equipment for applications requiring surface and sub-surface crack detection, metal sorting, coating thickness and conductivity measurements.

The hand-held design allows true single hand operation, leaving the operator free to use their other hand to scan with a probe. The specifications and features will appeal to users in aerospace, offshore oil, petrochemical, power generation and rail/axle industries.



ETi Series - 100 & 200 Eddy Current Flaw Detector

System Features

- Ability to multiplex four frequencies per channel; meaning up to eight probes can be used at any one time
- Uses Linux based software and has an Ethernet connector for connection to the client's local network
- SD storage card on board and USB capability for further data storage
- Housed in a rugged, single piece cast aluminum chassis and is compact to aid usability



SigmaCheck Eddy Current Conductivity Meter

System Features

- Easy to use
- Lightweight (350g) and ergonomically designed for comfort in the hand
- Choice of five frequencies – 60, 120, 240, 480, 960kHz
- Rapid display of conductivity results
- Field exchangeable probes via SD card
- USB PC connectivity for remote control and data logging
- Comes in a moulded UL94-5VA flame retardent ABS case



Vantage Eddy Current Flaw Detector

System Features

- Perfectly balanced for comfortable single-handed operation
- Lightweight (1.8 lbs.) with rugged housing
- Automatic lift-off setting
- Separate connector for Absolute and Reflection / Bridge Probes
- 3.5" easy to read, bright, high-resolution (115 DPI/0.22mm pixel) display
- PC-based analysis and reporting utility software for easy analysis and reporting included with the instrument

Individual detailed brochures are available upon request

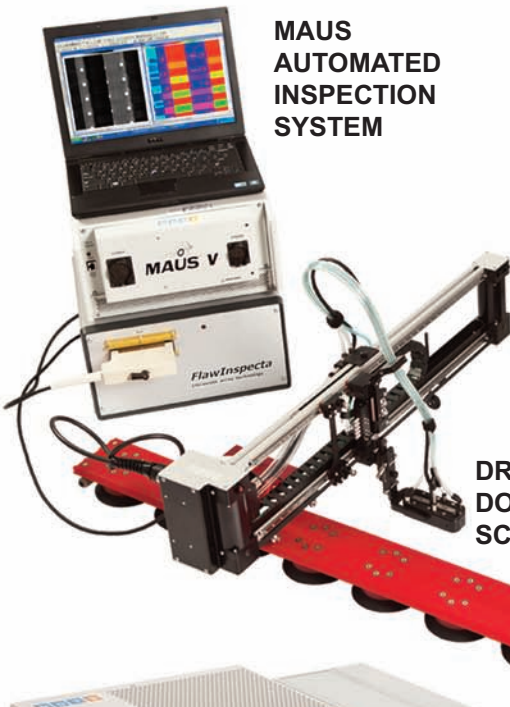


To order: sales@ndts.com / 715.246.0433

www.ndts.com

Eddy Current Probe Catalog

NDTS Product Line



**MAUS
AUTOMATED
INSPECTION
SYSTEM**



**VARIABLE
AUTOMATIC
COUPLANT AND
RECOVERY SYSTEM**

**DR11
DOUBLE REVERSE
SCANNING ARM**



**NSPECT 210 ROBOTIC
NON-DESTRUCTIVE INSPECTION SYSTEM**



Diagnostic Sonar Ltd.

**FLAWINSPECTA®
HIGH SPEED
ULTRASONIC ARRAY SYSTEM**



**SSEC III
REMOTE FIELD
EDDY CURRENT INSTRUMENT**

**ETHER NDE
EDDY CURRENT TESTING EQUIPMENT**



**IMTT™
UT TRANSDUCERS**



**SONOTECH™
UT COUPLANTS**



NON DESTRUCTIVE TESTING SOLUTIONS, INC

NDT Solutions, Inc.
10-1 Airport Rd. • New Richmond, WI 54017-2703
Tel: 715.246.0433 • Fax: 715.246.0466 • Email: sales@ndts.com
www.ndts.com