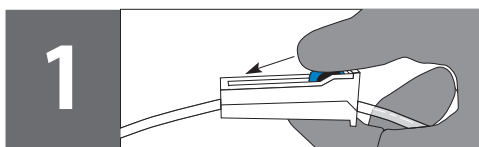




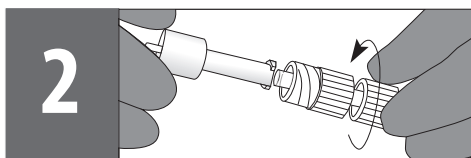
Jigsaw Medical™

Solving the healthcare puzzle one product at a time

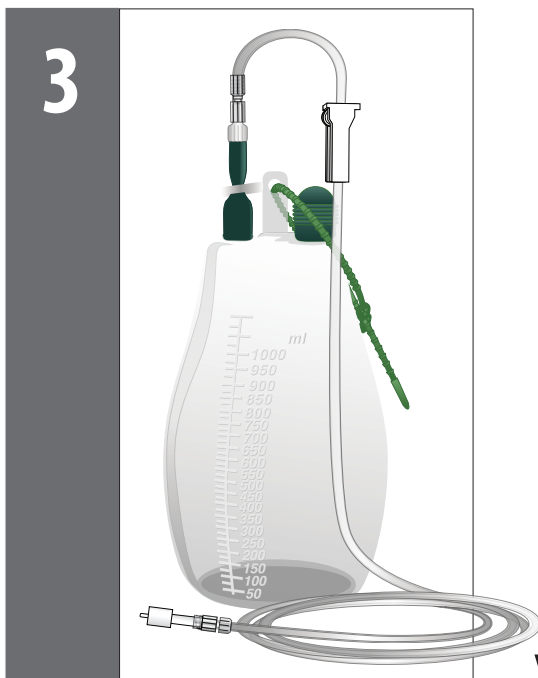
Adapter & Cap Instructions



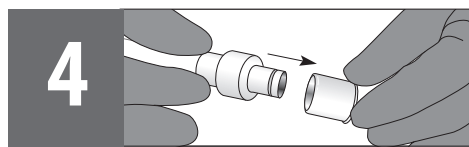
Close the roller clamp on the drain line tubing so that it is completely closed.



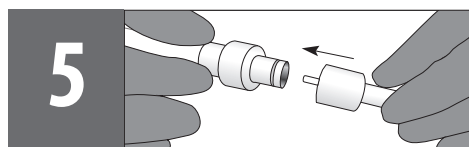
Attach the White Adapter to the drain line by pushing the ends together and turning the locking collar clockwise.



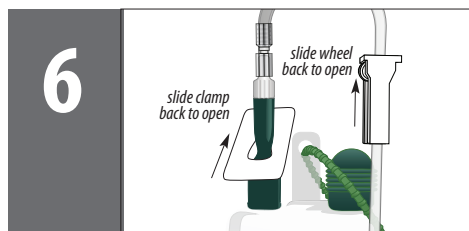
Attach drain line to bottle.



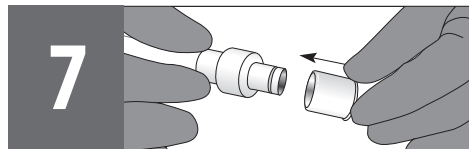
Remove cap from catheter.



Press fit the adaptor end of the drain line into the catheter tip.



Open clamp on bottle and drain line.
Adjust flow as necessary.



To disconnect the drain line; close all clamps, separate the adaptor from the catheter, attach new sterile cap to catheter tip.

If a second bottle is needed to complete the drainage, open a second sterile Safety Drain Line Adapter and a second Sterile Bottle.

Do Not Connect to a Drain Line Adapter that has already been used.

www.jigsawmed.com

2585 Millennium Dr., Suite C, Elgin, IL 60124
Tel: 630-587-0019 | Fax: 630-524-9088
Email: Fax@jigsawmed.com