

John Deere
1420, 1435, 1445 Soft Side
Parts List & Mounting Instructions

Jodale • Perry

Printed: 2003/07

John Deere 1420, 1435, 1445 Mounting Instructions

Standard Parts List

Qty	Description	Photo
L&R	Rear Cab Brackets	
L&R	Rear Cab Side Panels (Plastic) installed	
1	30 Amp Circuit Breaker	
1	30 Amp Relay	
2	Cab Lift Brackets (1" Tube)	
2	3/8" Black Snap Caps	
1	Ignition (Orange), Ground (Black), Power (Red Longer), Power Jumper Harnesses (Red Shorter)	
18"	O-rubber, Clip-on, 180°	
12.5 LF	O-rubber, Clip-on, 90°	
8"	NDAX, 1" x 1"	
22"	NDAX, 1/2" x 3/4" (seat plate)	

NOTE: All references to left and right are taken from the operator's point of view when he/she is sitting in the driver's seat.

John Deere 1420, 1435, 1445 Mounting Instructions

Standard Bolts List

Qty	Description
4	Bolt, Hex, 5/8" x 2", Grade 8, Yellow Dichrome
2	Bolt, Hex, 1/2" x 3", Grade 8, Yellow Dichrome
2	Bolt, Hex, 1/2" x 4 1/2", Grade 8, Yellow Dichrome
4	Nut, Hex, 5/8", Grade 8, Yellow Dichrome
4	Nut, Hex, 1/2", Grade 8, Yellow Dichrome
4	Washer, Lock, 5/8", Plated
4	Washer, Lock, 1/2", Plated
2	Washer, Flat, Rubber, Trimmed 2 sides
2	Washer, Flat, Rubber, Trimmed 1 side
2	Washer, Flat, Steel, 9/16" x 2 1/2" Trimmed 2 sides
2	Washer, Flat, Steel, 9/16" x 2 1/2" Trimmed 1 side
4	Isolator, Rubber, 1/2" x 2 1/2", Black
2	Tube Spacer Lower, 1"OD x 5/8"ID x 11/16"
2	Tube Spacer Upper, 1"OD x 5/8"ID x 5/16"
3	Nut, Hex, 10-24, Plated
3	Screw, Pan-Head, 10-24 x 1", Plated

NOTE: All references to left and right are taken from the operator's point of view when he/she is sitting in the driver's seat.

John Deere 1420, 1435, 1445 Mounting Instructions

Optional Parts Lists

Heater Option (if equipped)

Qty	Description	Photo
14 LF	3/8" Heater Hose	
1	3/8 NPT x 3/8" Barb - 180° Fitting (suction)	
1	3/8 NPT x 3/8" Barb - 90° Fitting (pressure) (1445 ONLY)	
1	16MM x 3/8" Barb - 180° Fitting (pressure) (1420 &1435 ONLY)	
2	HS-6 Hose Clamps	

NOTE: All references to left and right are taken from the operator's point of view when he/she is sitting in the driver's seat.

John Deere 1420, 1435, 1445 Mounting Instructions

NOTE: Use the following torque specifications for all hardware: 1/2" hardware 73 ft-lbs, 3/8" hardware 42 ft-lbs, 5/8" hardware 177 ft-lbs.

1. Prior to cab installation, remove the upper section of the 2-post ROPS guard, remove seat from seat plate.

2. Take the left rear bracket, one short tube spacer, and one long tube spacer and position it onto the left lower 2-post ROPS member. Put the longer tube spacer into the bottom hole of the ROPS, and the shorter tube spacer into the upper ROPS hole and loosely fasten the rear bracket into place using the hardware provided, 5/8" x 2" hex bolts, nuts, and lock washers. Ensure that the washer and nut are on the outside of the machine side for space requirements. Repeat for the right rear bracket, see Figure 1.

Figure 1



3. Locate the tubing crossmember which is located underneath the operator foot platform. Use Figures 2 and 3 as a guide and drill two 9/16" holes through the tubing crossmember and the foot platform.

Figure 2

See attached blueprint



4. Take the 1/2" x 3/4" NDAX and position it against the seat plate near the hinge as shown in Figure 4. Peel back the adhesive and glue into place.



5. Open the left door and right escape window before proceeding with the

NOTE: All references to left and right are taken from the operator's point of view when he/she is sitting in the driver's seat.

John Deere 1420, 1435, 1445 Mounting Instructions

following steps. Take the cab lift brackets and bolt them onto the cab frame with the ends sticking away from the frame. Remove the shipping bracket from the rear mounts and prepare to lift the cab with an overhead hoist so that the cab O-rubber can be installed.

Figure 5



Figure 6



6. Take the 90° O-rubber and beginning at the left rear corner, slide the rubber onto the steel panel with the bulb facing down, and work your way forward and around the cab frame until you reach the same point on the right rear corner of the

cab. See Figure 5 & 6. You will have to put a separate piece between the front mount plates.

7. Take the 180° O-rubber, and starting where you stopped in the previous step, slide the rubber onto the panel until you reach the panel shown in Figure 7.

8. Using Figure 7 as a guide take the 1" x 1" NDAX and glue it into the rear panel as shown.

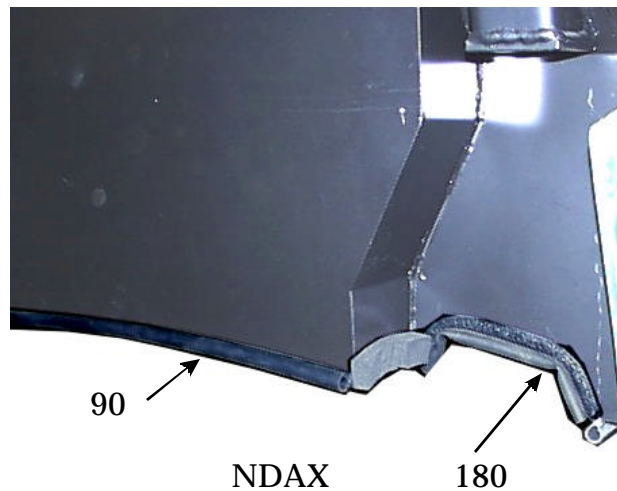


Figure 7

9. From where you left off in the previous step, slide 90° O-rubber onto the rear steel panel and then repeat for the other side. See Figure 7.

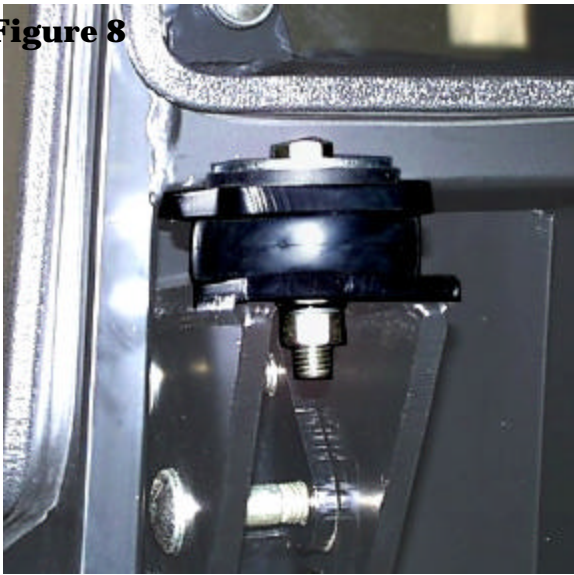
10. Move to the lower two post ROPS, and note the rear steel crossmember bolted to the ROPS member. Loosen all four bolts in order to make the installation of the cab easier. Lift the cab over the machine and slowly lower the cab over the rear mounts. Place one rubber isolator over each of the two rear mounts, and over the two holes drilled into the front platform. Once the cab is lowered onto the rear mounts, take one ½" x 3" hex bolt, one 9/16" x 2 ½" steel

NOTE: All references to left and right are taken from the operator's point of view when he/she is sitting in the driver's seat.

John Deere 1420, 1435, 1445 Mounting Instructions

flat washer (trimmed 2 sides), one 9/16" x 2 1/2" rubber flat washer (trimmed 2 sides), one 1/2" lock washer, and one 1/2" hex nut and loosely fasten each rear mount. Repeat for the front mounts, but use 1/2" x 4 1/2" hex bolts instead and loosely fasten the cab down. The front mounts locate the cab frame front to back, so tighten the two front mounts to the torque spec first, and then the rear mounts next, and finally the rear cab brackets last. See Figure 8.

Figure 8



11. Use the attached wiring diagram as a guide, and proceed with the wiring hook-up onto the tractor.

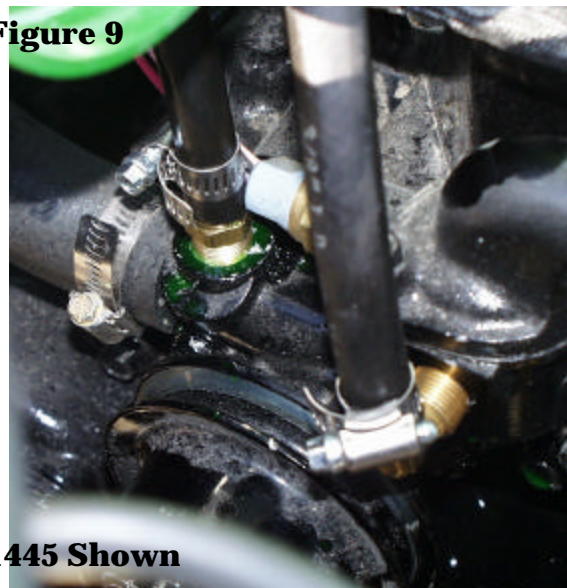
Proceed with steps 12 & 13 if cab is equipped with the heater option only.

12. Drain antifreeze from engine before proceeding. Prior to proceeding, remove the alternator belt. Remove engine plug from the thermostat housing as shown in Figure 9 in the lower right side. **USE A WATER SEALANT MATERIAL AROUND ALL FITTINGS.** Insert the 3/8 barb x 3/8 NPT 90° fitting (pressure) into the plug hole (1445 only). Insert the 3/8 barb x 16MM 180° fitting (pressure)

into the plug hole (1420 & 1435 only). Remove plug from near the water pump in the upper left part of Figure 9 just beside the thermostat sending unit. Insert the 3/8 barb x 3/8 NPT 180° fitting (suction) into the plug hole. Run the hose to the heater fittings and ensure that there is adequate hose and then cut the hose. Attach the pressure hose to the pressure fitting and the other hose to the suction fitting. Attach the hose with two HS-6 clamps. Re-install alternator belt when complete.

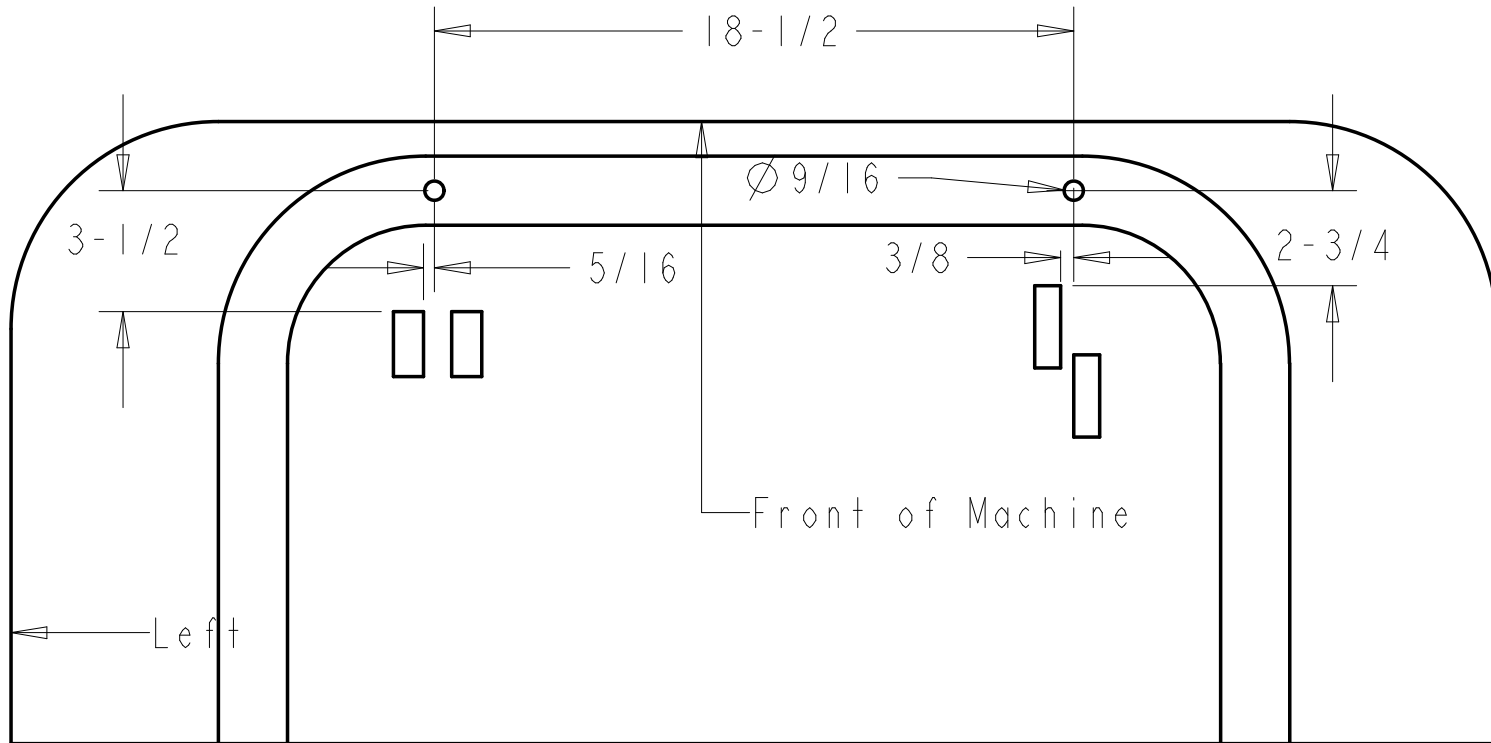
13. Refill the engine anti-freeze. Open the cab heater valve using the rotary control on the switchplate and turn on the fan. Start the vehicle and run at PTO RPM for five minutes to build up engine heat. Check for leaks and add anti-freeze if required. For maximum heater efficiency, all air trapped in the heater system must be evacuated. Continue running the engine and adding antifreeze as required until cab heater produces hot air. **TIP: when purging system of air, open radiator cap when running the engine.**

Figure 9



NOTE: All references to left and right are taken from the operator's point of view when he/she is sitting in the driver's seat.

Revision	Decision	Date



Tolerances:
 Unless otherwise specified
 X.X = $\pm 1/16$ "
 Angular = $\pm 1.0^\circ$

SCALE 0.180

CONFIDENTIALITY NOTICE

This material is property of Jodale Perry Corporation (JDP) or one of its subsidiaries or affiliates and is not to be used by the recipient for any purpose other than the purpose for which it was transmitted. The material remains the property of JDP and shall be returned upon request. The material may not be reproduced or disclosed to third parties without the written consent of JDP

Material		Req'd		JODALE PERRY CORPORATION Box 909, 300 Route 100, Morden MB, Canada			
				Title Front Mount Drill Template			
Drawn By Dave Friesen	Date 2001-05-01	Size A	Part Number	Project John Deere 1400	Rev		
Checked By	Date	Scale	Units Imperial	File Number JDI400PRT0115			

2

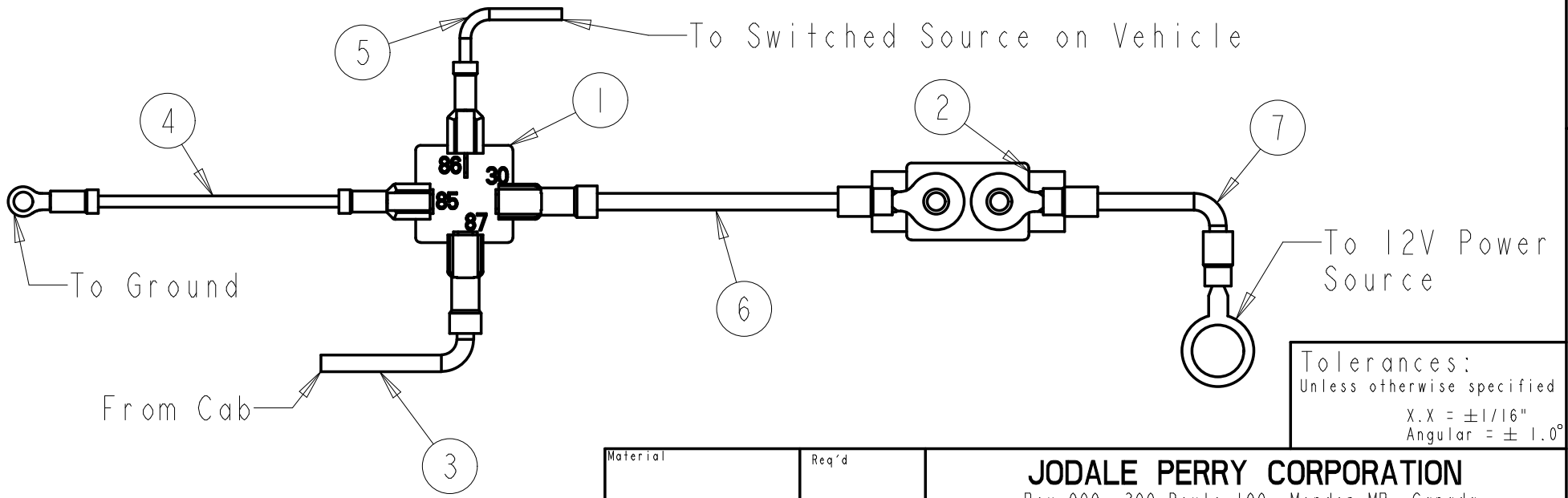
1

	Revision	Decision	Date

Item	Qty	Length	File Number	Description
1	1		JDPPRT0175	30 Amp Relay
2	1		JDPPRT0176	30 Amp Circuit Breaker
3	1		JDPWASM0016	Cab Main Power Harness
4	1		JDPWASM0019	Ground Harness
5	1		JDPWASM0017	Ignition Harness
6	1		JDPWASM0018	Power Jumper Harness
7	1		JDPWASM0020	Power Harness

B

A



Tolerances:
 Unless otherwise specified
 X.X = ±1/16"
 Angular = ± 1.0°

SCALE 0.625
 CONFIDENTIALITY NOTICE

This material is property of Jodale Perry Corporation (JDP) or one of its subsidiaries or affiliates and is not to be used by the recipient for any purpose other than the purpose for which it was transmitted. The material remains the property of JDP and shall be returned upon request. The material may not be reproduced or disclosed to third parties without the written consent of JDP.

Material	Req'd	JODALE PERRY CORPORATION Box 909, 300 Route 100, Morden MB, Canada			
		Title Cab Wiring Schematic			
Drawn By Daryl Furkalo	Date 2001-04-03	Size A	Part Number	Project Boxer Parts	Rev
Checked By	Date	Scale Imperial	File Number JDPWASM0021		

2

1