

7800510 - BTPV22675E

# Parts Manual



**Manual Part No.** 7103421

Revision -

Rev. Date: 4/1/2009

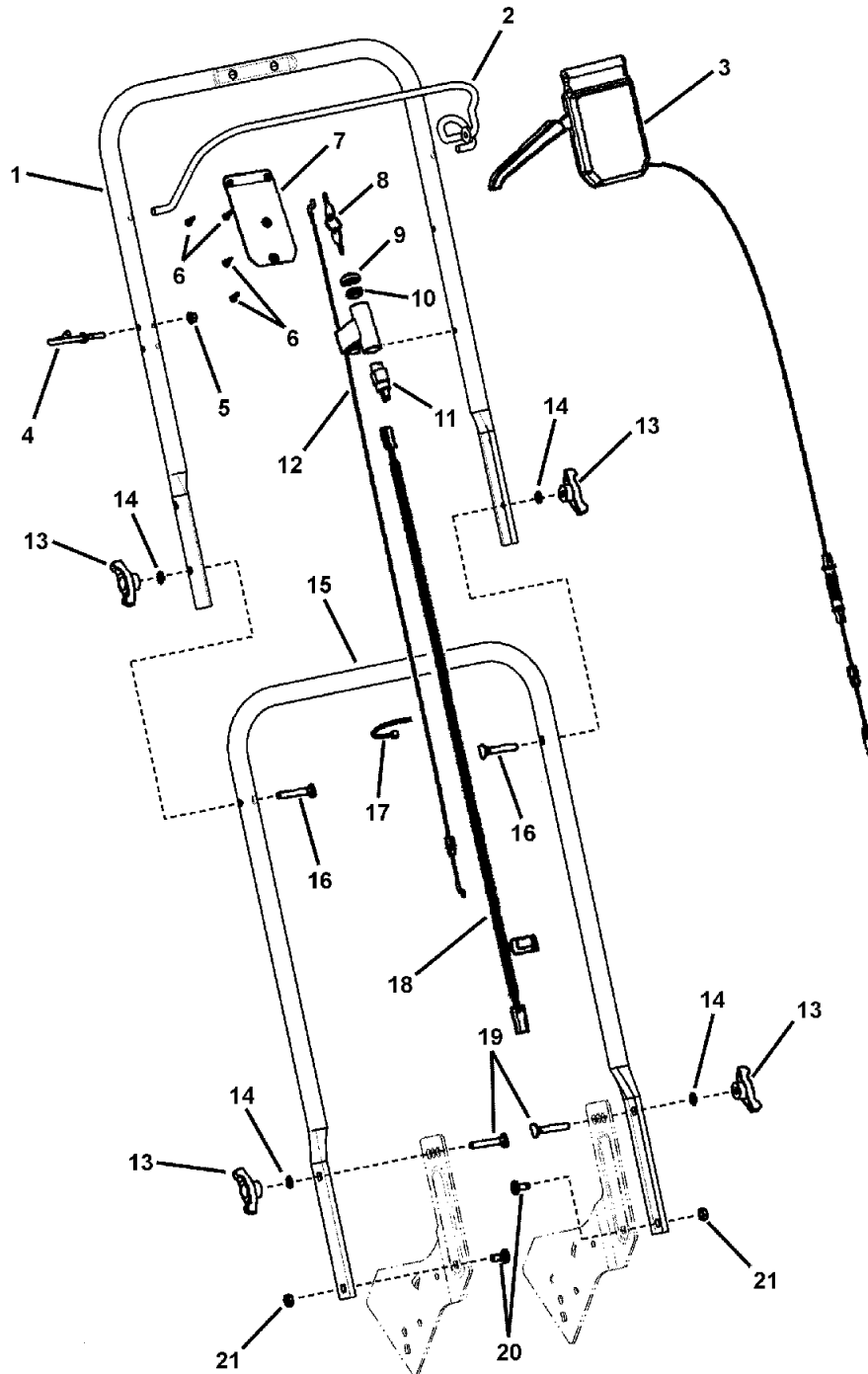
---

<b>PRODUCT COMPONENTS</b>	<b>PAGES</b>
Handles and Controls .....	4
Engine and Blade Assembly .....	6
Transmission & Grass Bag .....	8
Decals Group .....	10
Deck Assembly .....	12
Wiring Schematic .....	14
<b>Torque Specification Chart .....</b>	<b>Inside Back Cover</b>

Not for  
Reproduction

## Handles and Controls

NOTE: Unless noted otherwise, use the standard hardware torque specification chart.



The above parts group applies to the following Mfg. Nos.:

7800510 - BTPV22675E

## Handles and Controls

REF NO	PART NO.	QTY.	DESCRIPTION
1	7078247AYP	1	HANDLE, Upper, Flat
2	7101675AYP	1	BAIL, Operator Presence Control
3	7102962YP	1	ASSY, Control Head, VS, Brute 22"
4	7028488MA	1	GUIDE, Rope (1/4-20 thread)
5	7076978SM	1	NUT, 1/4-20 Hex Nyloc
6	7100225YP	4	SCREW, #8-16 Recessed Pan Head (Torxplus)
7	7300130AMA	1	PLATE, Control Panel
8	7011138YP	1	IGNITION KEY (Pair)
9	7100330YP	1	CAP, E-Start <added>
10	7100329YP	1	NUT, 5/8-32, E-Start
11	7028765YP	1	IGNITION SWITCH, E/S (Start/Run)
12	7102961YP	1	CABLE, Bail, 22", WBM, Brute, E/S Part number is stamped on part.
13	071294MA	4	KNOB, 5/16-18 Wing Nut
14	7090391SM	4	WASHER, 5/16" Internal Tooth Lock
15	7301013AYP	1	HANDLE, Lower Murray, MY09"
16	7091189YP	2	BOLT, 5/16-18 x 2" Curved Head Square Neck
17	7024649YP	3	WIRE TIE, 11 Inch Std Blk Nylon
18	7101504YP	1	WIRING HARNESS, RD, 21"/22" WBM
19	7091714YP	2	BOLT, 5/16-18 x 1" Round Head Square Neck
20	7091077YP	2	BOLT, 5/16-18 x 5/8" Round Head Square Neck, GR 5
21	7090951SM	2	NUT, 5/16-18 Hex Large Flange Center Lock

Not for  
Reproduction

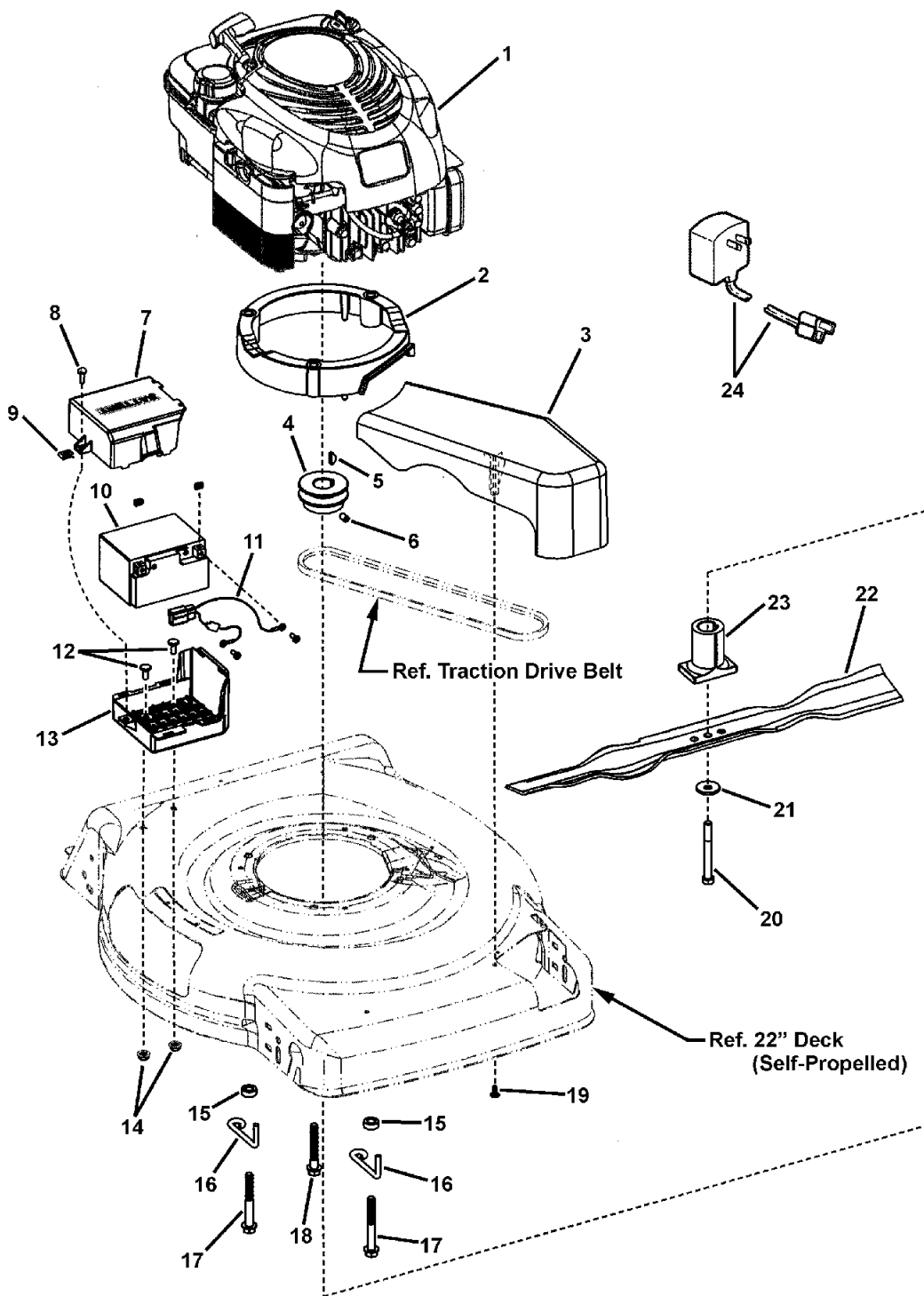
### Footnotes

The above parts group applies to the following Mfg. Nos.:

7800510 - BTPV22675E

# Engine and Blade Assembly

NOTE: Unless noted otherwise, use the standard hardware torque specification chart.



The above parts group applies to the following Mfg. Nos.:  
7800510 - BTPV22675E

## Engine and Blade Assembly

REF NO	PART NO.	QTY.	DESCRIPTION
1	126T05-4678-B3	1	ENGINE, B&S, 675 Series, ES, X, B3
2	7101449YP	1	ASSY, Engine Spacer (incl. 3 bushings, p/n 7101448)
3	1101596MA	1	COVER, Belt (Plastic)
4	7100437YP	1	PULLEY, Engine
5	7091214YP	1	KEY, #HP-506 Hi-Pro
6	7092086YP	1	SET SCREW, 5/16-18 x 1/2" Hex Recess
7	7102918YP	1	TOP, Battery Box, WBM
8	7091075SM	1	SCREW, #10-24 x 5/8" Hex Washer Face Self-Tap, GR 5
9	1960593SM	1	SPEED NUT, #10-24 Retainer w/Extrusion
10	7101320YP	1	ASSY, Battery w/Harness (incl. items 10 & 11) also includes 2 screws (7043977) and nu (7090932)
10	-----	1	BATTERY, Sealed Lead Acid, 12V
11	7015488YP	1	HARNESS, Battery
12	7090803YP	2	BOLT, 1/4-20 x 5/8" Flat Head Square Neck, GR 5
13	7102917YP	1	BOTTOM, Battery Box, WBM
14	780285MA	2	NUT, 1/4-20 Hex Flange Lock
15	7101302YP	2	SPACER, Belt Guide, 22" VS
16	7101024YP	2	BELT GUIDE, Engine, 22" VS
17	7101451YP	2	SCREW 3/8-16 x 3" Hex Washer Self-Tap
18	025X11MA	1	BOLT, 3/8-16 NS x 2-1/2" Hex Washer Face
19	7900018YP	1	SCREW, 4.8 x 1.59 x 13mm, Round Washer Head Hi-Lo (Torx)
20	01X144MA	1	BOLT, 3/8-24 x 3-1/4" Hex Head GR 8
21	1101989MA	1	WASHER, .38" I.D. x 1.183 O.D. Bellville
22	7100851AYP	1	BLADE, 22", Walk Mower
23	7100740YP	1	BLADE HUB, 22" Deck
24	206838YP	1	CHARGER, Battery

### Footnotes

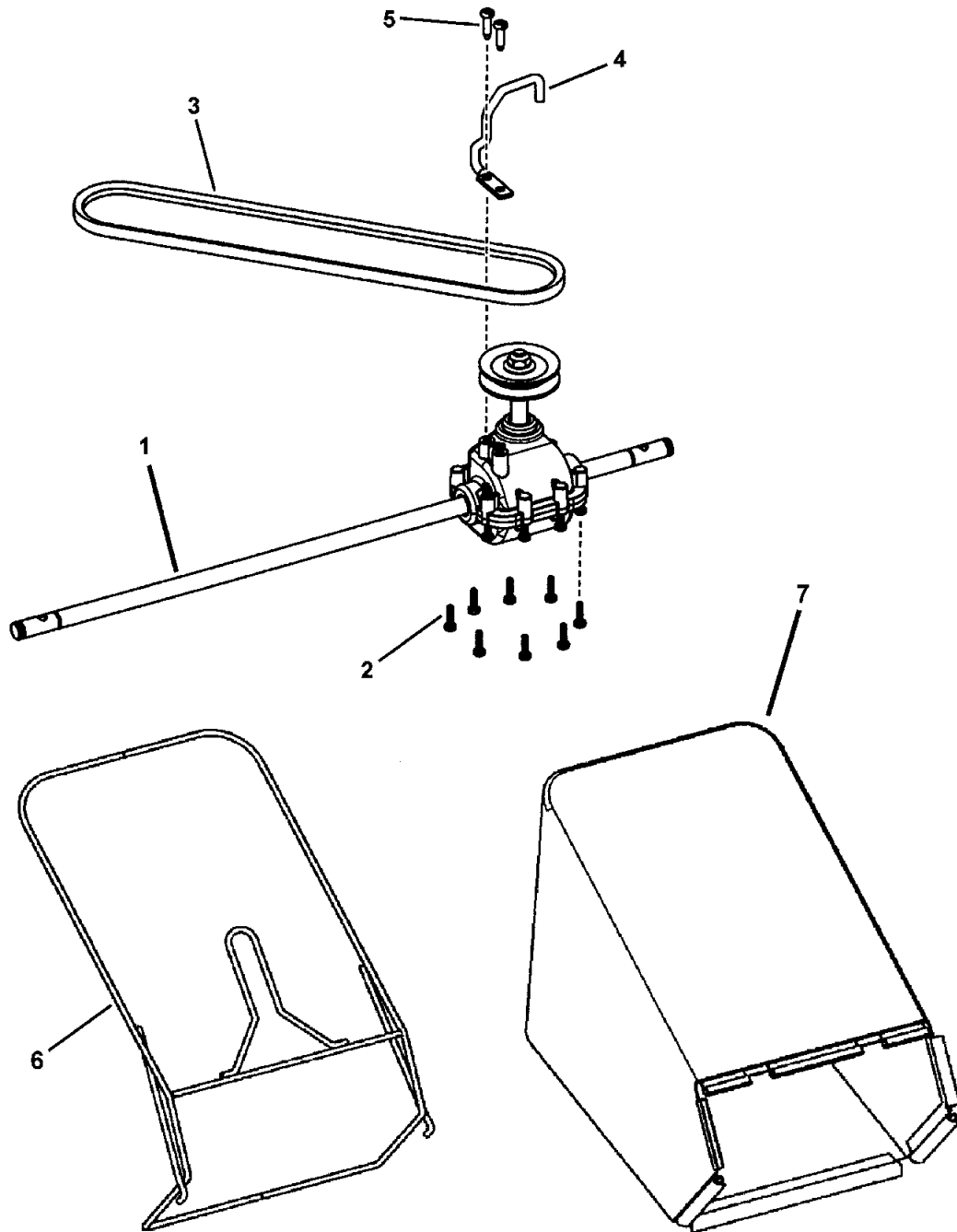
NOTE: \* Purchase engine parts from engine manufacturer dealer.

**The above parts group applies to the following Mfg. Nos.:**

7800510 - BTPV22675E

## Transmission & Grass Bag

NOTE: Unless noted otherwise,  
use the standard hardware torque  
specification chart.



The above parts group applies to the following Mfg. Nos.:

7800510 - BTPV22675E

## **Transmission & Grass Bag**

<b>REF NO</b>	<b>PART NO.</b>	<b>QTY.</b>	<b>DESCRIPTION</b>
1	7100857YP	1	TRANSMISSION, Rocker, 22" WBM, VS (Ref. Deck Assembly Page, item 35)
2	7900032YP	8	SCREW, 7mm x 1 x .550 AB Point
3	7100913YP	1	BELT, 3L, 31.94" Effective Length (Traction Drive, Pivot Handle)
4	7101009YP	1	BELT GUIDE, Transmission, 22" WBM
5	691138	2	SCREW, Pan Head Cross Recess, Tapping
6	7101230AYP	1	BAG FRAME, 22" WBM
7	7102573YP	1	GRASS BAG, 22" Rear Discharge

Not for  
Reproduction

### **Footnotes**

---

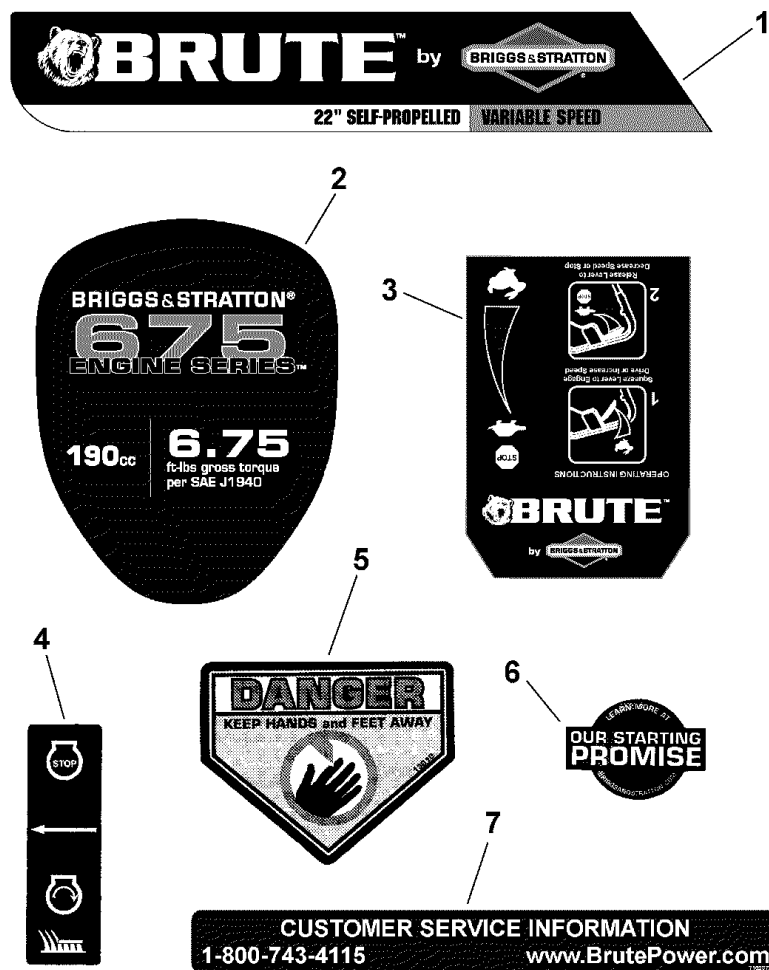
**The above parts group applies to the following Mfg. Nos.:**

7800510 - BTPV22675E



## Decals Group

NOTE: Unless noted otherwise, use the standard hardware torque specification chart.



The above parts group applies to the following Mfg. Nos.:

7800510 - BTPV22675E

## **Decals Group**

<b>REF NO</b>	<b>PART NO.</b>	<b>QTY.</b>	<b>DESCRIPTION</b>
1	7102959YP	1	DECAL, 22" Deck, Front Wheel Drive, Electric Start
2	7101911MA	1	DECAL, Engine, TP, Brute 675
3	7101814MA	1	DECAL, Control Head
4	7029782MA	1	DECAL, OPC Bail International Symbol
5	7013010SM	1	DECAL, Danger, Cut Finger
6	277878YP	1	DECAL, Starting Promise
7	7102372YP	1	DECAL, Customer Service, Brute
8	7101394YP	1	DECAL, Warning, Rear Discharge Door

Not for  
Reproduction

### **Footnotes**

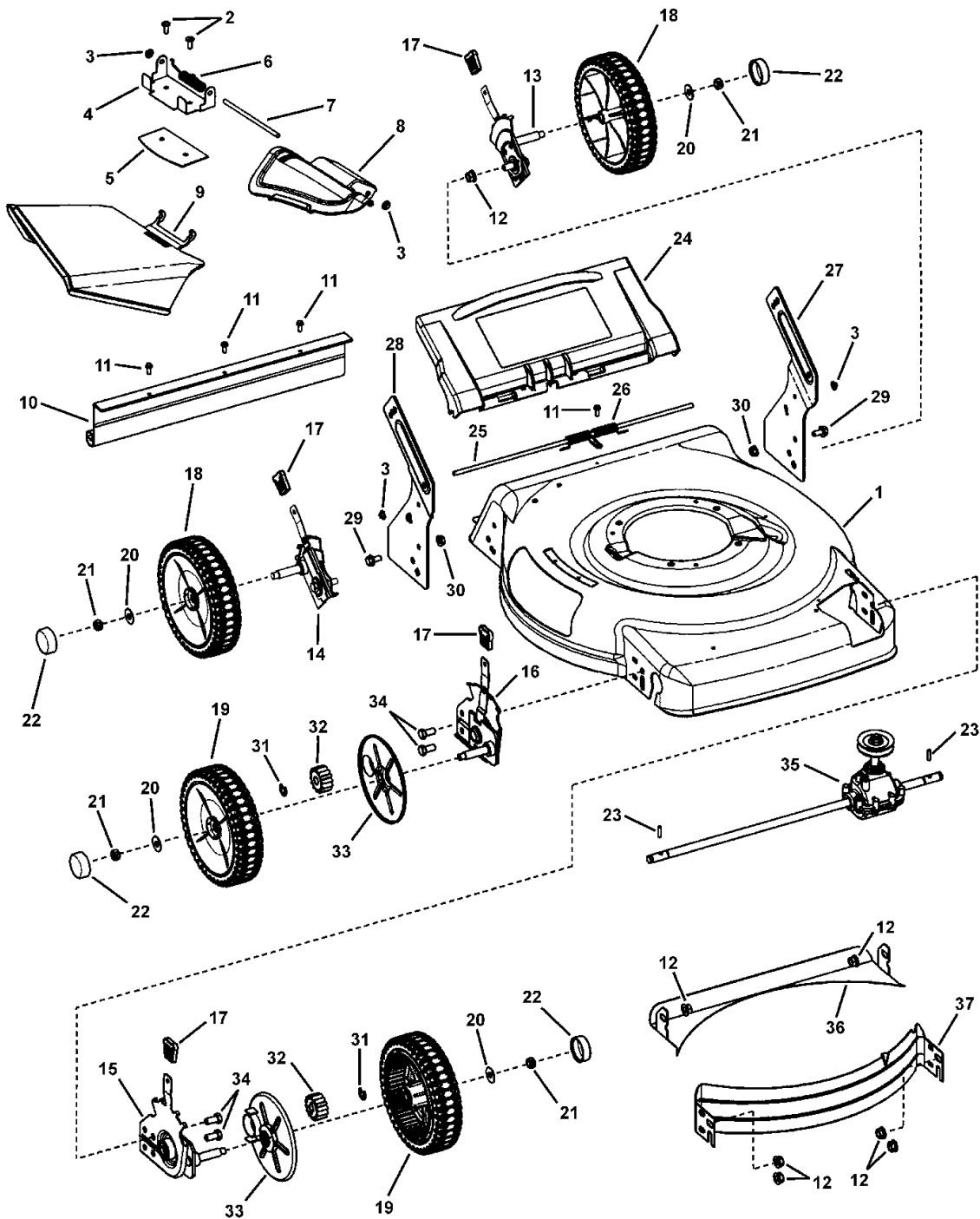
---

**The above parts group applies to the following Mfg. Nos.:**

7800510 - BTPV22675E

## Deck Assembly

NOTE: Unless noted otherwise,  
use the standard hardware torque  
specification chart.



The above parts group applies to the following Mfg. Nos.:  
7800510 - BTPV22675E

## Deck Assembly

REF NO	PART NO.	QTY.	DESCRIPTION
1	7301035ZYP	1	DECK, 22" Walk, 3-N-1, Electric Start
2	7900067YP	3	SCREW, 1/4-20 x .550 Pan Head Torx (T-30)
3	7091020YP	4	PUSHNUT, 1/4"
4	7300855ZMA	1	BRACKET, Chute
5	7300856ZMA	1	PLATE, Mulch 22" RB Scotts
6	166X38MA	1	SPRING, Chute (Torsion)
7	215X19ZMA	1	ROD, Chute Pivot
8	1101098MA	1	COVER, Mulch, Plastic, Black
9	1101097MA	1	SIDE CHUTE, Plastic, Black
10	7103347YP	1	GUARD, Rear, 22" Mower Deck
11	7091286YP	4	SCREW, #10-24 x 1/2" Hex Washer Self-Tap (Sems)
12	7900053MA	10	NUT, 3/8-16, Hex Flange Lock GR 5
13	7501055YP	1	ASSY, Height-Of-Cut, Left Rear, 22" S.P.
14	7501056YP	1	ASSY, Height-Of-Cut, Right Rear, 22" S.P.
15	7501058YP	1	ASSY, Height-Of-Cut, Left Front, 22 S.P.
16	7501057YP	1	ASSY, Height-Of-Cut, Right Front, 22 S.P.
17	7100633YP	4	GRIP, Height Latch
18	7101712MA	2	WHEEL, 8" x 2" Idle, w/Db Tread (Brute yellow)
19	7101710MA	2	WHEEL, 8" x 2" Drive, w/Db Tread (Brute yellow)
20	17X169MA	4	WASHER, 1" O.D. x .387 I.D. Flat
21	7091585SM	4	NUT, 3/8-16 Hex Center Lock, GR 5 or B
22	7101351MA	4	HUBCAP, Round, Black
23	7101270YP	2	DRIVE PIN, 22" WBM, Front Wheel Drive
24	7101243YP	1	DOOR, 22" Rear
25	7101070YP	1	ROD, Pivot, Rear Door (1/4" Dia. X 17-1/2")
26	7101461YP	1	SPRING, Torsion, Rear Door, 22" WBM
27	7300668AYP	1	BRACKET, Lower Handle, LH, 22" WBM
28	7300669AYP	1	BRACKET, Lower Handle, RH, 22" WBM
29	7090606SM	2	BOLT, 5/16-18 x 5/8" Hex Flange Lock
30	7090585MA	2	NUT, 5/16-18 Hex Flange Lock, GR 5
31	7014341YP	4	RING, External Retaining
32	7101207YP	2	GEAR, Pinion, 22" WBM, Front Wheel Drive
33	7101402YP	2	DUST SHIELD, Forward, 22" WBM
34	7090134MA	4	SCREW, 3/8-16 x 3/4" Hex Head Cap, GR 5
35	7100857YP	1	TRANSMISSION, Rocker, 22" WBM, VS
36	7300854ZMA	1	BAFFLE, Rear, 22" Deck
37	7300440ZMA	1	BAFFLE, Front, 22" WBM

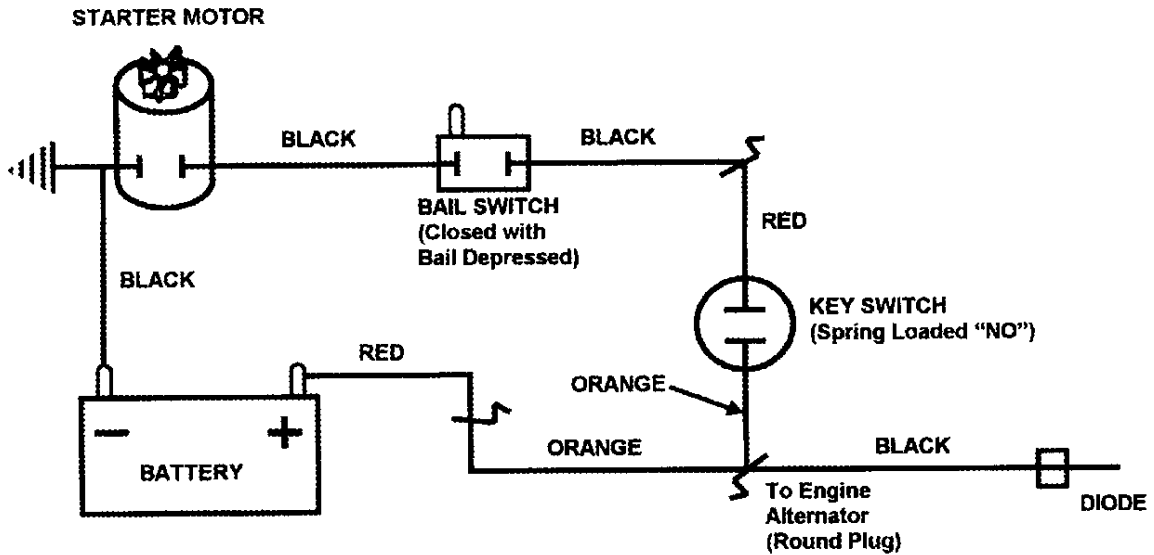
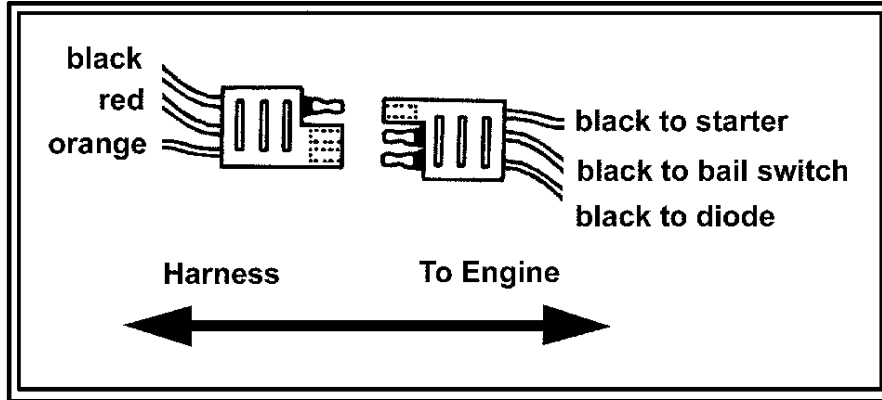
## Footnotes

The above parts group applies to the following Mfg. Nos.:

7800510 - BTPV22675E

# Wiring Schematic

NOTE: Unless noted otherwise, use the standard hardware torque specification chart.



WIRING SCHEMATIC FOR 6.75 GROSS TORQUE BRIGGS ENGINE

The above parts group applies to the following Mfg. Nos.:  
7800510 - BTPV22675E

## Wiring Schematic

---

REF NO	PART NO.	QTY.	DESCRIPTION
1	7101504YP	1	WIRING HARNESS, RD, 21"/22" WBM (Ref. Handles and Controls page, item 18)

---

Not for  
Reproduction

### Footnotes

---

The above parts group applies to the following Mfg. Nos.:

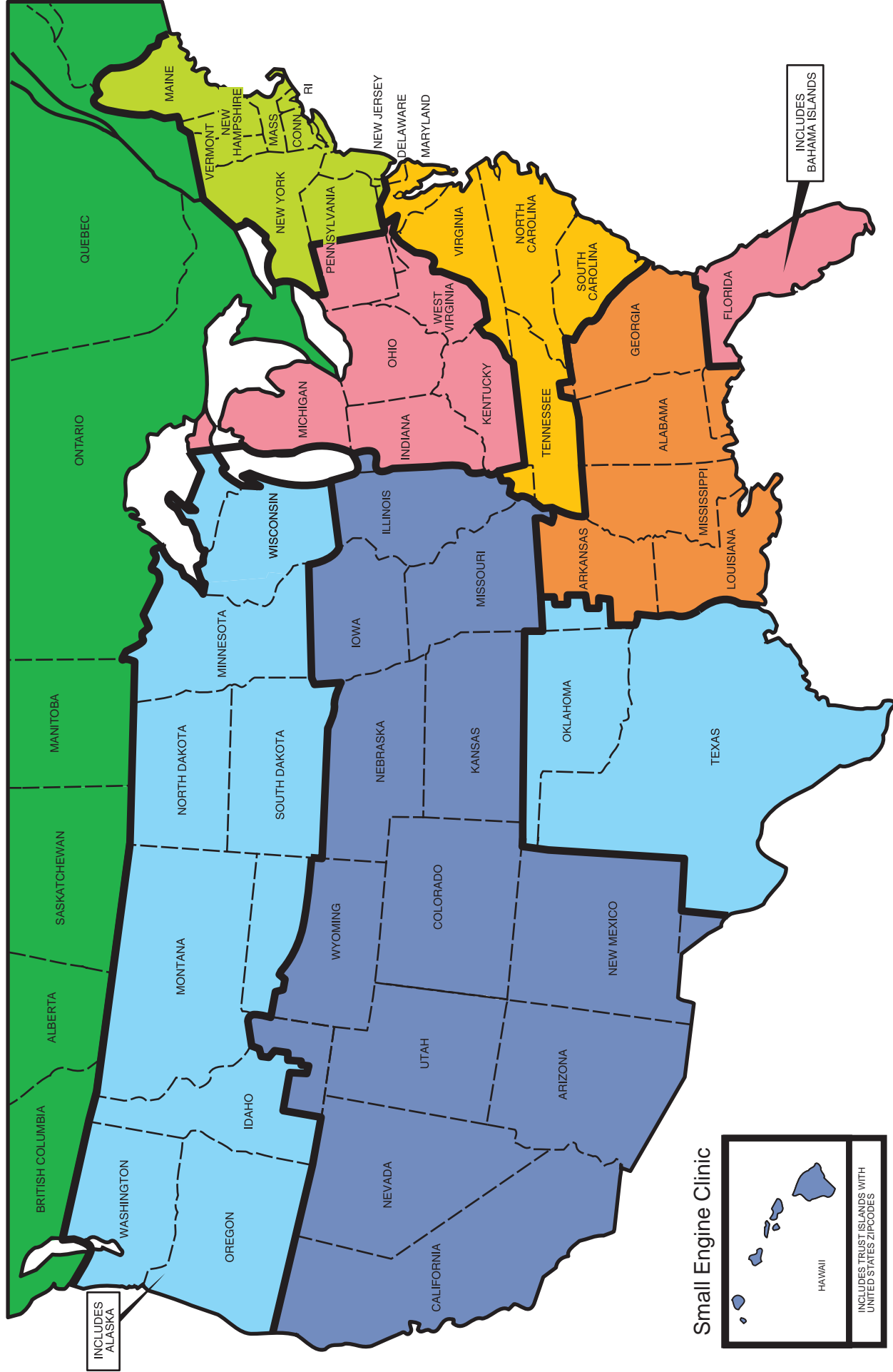
7800510 - BTPV22675E

Not for  
Reproduction

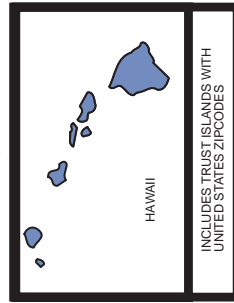
Not for  
Reproduction



# IDN Network



Small Engine Clinic



- Magneto Power (800) 733-7388
- MWE (800) 683-8484
- Preferred Power (800) 331-7164
- Atlantic Power (800) 456-5692
- Central Power (800) 444-7774
- SEDCO (800) 346-4260
- Power Source Canada (905) 829-0006

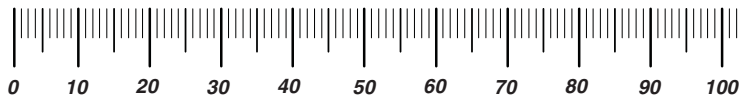
**Briggs & Stratton Corporation**  
**INTEGRATED DISTRIBUTOR NETWORK**

Midwest Engines	700 Enterprise Rd Aurora, IL 60504	<a href="http://www.mwe.net">www.mwe.net</a>	(800) 683-8484
Central Power Systems	3700 Paragon Dr Columbus, OH 43228	<a href="http://www.centralpower.com">www.centralpower.com</a>	(800) 444-7774
Atlantic Power	20 Empire Stat Rd Castleton, NY 12033	<a href="http://www.atlanticpowerinc.com">www.atlanticpowerinc.com</a>	(800) 456-5692
Preferred Power Inc	6509-A Northpark Blvd Charlotte, NC 28216	<a href="http://www.centralpower.com">www.centralpower.com</a>	(800) 331-7164
Central Power Systems	3700 Paragon Dr Columbus, OH 43228	<a href="http://www.centralpower.com">www.centralpower.com</a>	(800) 444-7774
Magneto Power LLC	1000 W. Donges Bay Rd Suite 100 Mequon, WI 53092	<a href="http://www.magnetopower.com">www.magnetopower.com</a>	(800) 733-7388
Sedco, Inc	225 Henry D. Robinson Blvd Pendergrass, GA 30567	<a href="http://www.sedcoinc.com">www.sedcoinc.com</a>	(800) 346-4260
Power Source Canada, LTD	2815 Bristol Circle, Unit 1 Oakville, ON L6H 6X5	<a href="http://www.powersourcecanada.ca">www.powersourcecanada.ca</a>	(905) 829-0006

# Hardware Identification & Torque Specifications

Torque Specification Chart								
FOR STANDARD METRIC MACHINE HARDWARE (Tolerance ± 20%)								
Property Class	5.6		8.8		10.9		12.9	
	Class 5.6		Class 8.8		Class 10.9		Class 12.9	
Size Of Hardware	in/lbs		in/lbs		in/lbs		in/lbs	
	ft/lbs	Nm.	ft/lbs	Nm.	ft/lbs	Nm.	ft/lbs	Nm.
M3	5.88	.56	13.44	1.28	19.2	1.80	22.92	2.15
M4	13.44	1.28	30.72	2.90	43.44	4.10	52.56	4.95
M5	26.4	2.50	60.96	5.75	5.97	8.10	7.15	9.7
M6	44.64	4.3	7.3	9.9	10.3	14	12.1	16.5
M7	5.2	7.1	12.1	16.5	16.9	23	19.9	27
M8	7.7	10.5	17.7	24	25	34	29	40
M10	15	21	35	48	50	67	59	81
M12	26	36	61	83	86.2	117	103	140
M14	42	58	101	132	136	185	162	220
M16	64	88	147	200	210	285	250	340
M18	89	121	202	275	287	390	346	470
M20	126	171	290	390	405	550	486	660
M22	169	230	390	530	559	745	656	890
M24	217	295	497	375	708	960	840	1140
M27	320	435	733	995	1032	1400	1239	1680
M30	435	590	995	1350	1401	1900	1681	2280
M33	590	800	1349	1830	1902	2580	2278	3090
M36	759	1030	1740	2360	2441	3310	2935	3980
M39	988	1340	2249	3050	3163	4290	3798	5150

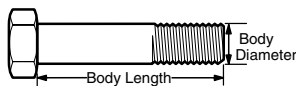
The guides and ruler furnished below are designed to help you select the appropriate hardware.



Nut, M8

Thread Diameter (mm)  
Inside Diameter (in)  
Threads per inch

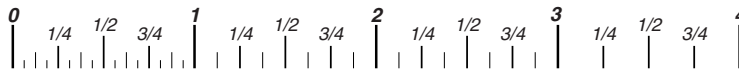
Nut, 1/2-16



Screw, M8- 1.25 x 25

Thread Diameter (mm)  
Body Diameter  
Distance between threads (mm)  
Threads per inch  
Body Length (mm)  
Body Length (in)

Screw, 1/2- 16 x 2



## Standard Hardware Sizing

When a washer or nut is identified as 1/2" (M8), this is the *Nominal size*, meaning the *inside diameter* is 1/2 inch (8mm metric thread diameter); if a second number is present it represents the *threads per inch* (distance between threads).

When bolt or capscrew is identified as 1/2 - 16 x 2" (M8 - 1.25 x 50 ), this means the *Nominal size*, or body diameter is 1/2 inch (8mm metric thread diameter), the second number, 16, represents the *threads per inch*, (1.25 thread diameter). The final number is the body length of the bolt or screw, 2 inches (50mm).

Torque Specification Chart						
FOR STANDARD MACHINE HARDWARE (Tolerance ± 20%)						
Hardware Grade	No Marks		SAE Grade 5		SAE Grade 8	
	SAE Grade 2		SAE Grade 5		SAE Grade 8	
Size Of Hardware	in/lbs		in/lbs		in/lbs	
	ft/lbs	Nm.	ft/lbs	Nm.	ft/lbs	Nm.
8-32	19	2.1	30	3.4	41	4.6
8-36	20	2.3	31	3.5	43	4.9
10-24	27	3.1	43	4.9	60	6.8
10-32	31	3.5	49	5.5	68	7.7
1/4-20	66	7.6	8	10.9	12	16.3
1/4-28	76	8.6	10	13.6	14	19.0
5/16-18	11	15.0	17	23.1	25	34.0
5/16-24	12	16.3	19	25.8	29	34.0
3/8-16	20	27.2	30	40.8	45	61.2
3/8-24	23	31.3	35	47.6	50	68.0
7/16-14	30	40.8	50	68.0	70	95.2
7/16-20	35	47.6	55	74.8	80	108.8
1/2-13	50	68.0	75	102.0	110	149.6
1/2-20	55	74.8	90	122.4	120	163.2
9/16-12	65	88.4	110	149.6	150	204.0
9/16-18	75	102.0	120	163.2	170	231.2
5/8-11	90	122.4	150	204.0	220	299.2
5/8-18	100	136	180	244.8	240	326.4
3/4-10	160	217.6	260	353.6	386	525.0
3/4-16	180	244.8	300	408.0	420	571.2
7/8-9	140	190.4	400	544.0	600	816.0
7/8-14	155	210.8	440	598.4	660	897.6
1-8	220	299.2	580	788.8	900	1,244.0
1-12	240	326.4	640	870.4	1,000	1,360.0

## NOTES

- These torque values are to be used for all hardware excluding: locknuts, self-tapping screws, thread forming screws, sheet metal screws and socket head setscrews.
- Recommended seating torque values for locknuts:
  - for prevailing torque locknuts - use 65% of grade 5 torques.
  - for flange whizlock nuts and screws - use 135% of grade 5 torques.
- Unless otherwise noted on assembly drawings, all torque values must meet this specification.

## Common Hardware Types

Hex Head Capscrew



Washer

Carriage Bolt



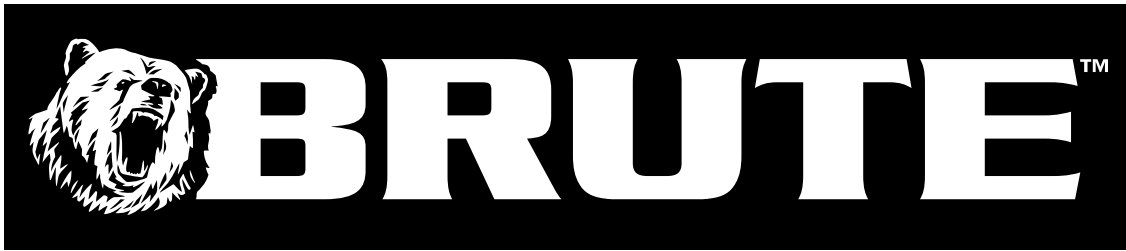
Lockwasher



Hex Nut

## Wrench & Fastener Size Guide

1/4" Bolt or Nut Wrench—7/16"	5/16" Bolt or Nut Wrench—1/2"	3/8" Bolt or Nut Wrench—9/16"	7/16" Bolt or Nut Wrench (Bolt)—5/8" Wrench (Nut)—11/16"	1/2" Bolt or Nut Wrench—3/4"
M6 Bolt or Nut Wrench—10mm	M8 Bolt or Nut Wrench—13mm	M10 Bolt or Nut Wrench—17mm	M12 Bolt or Nut Wrench—19mm	M14 Bolt or Nut Wrench—22mm



Not for  
Reproduction

**IT IS THE POLICY OF BRIGGS & STRATTON CORP. TO IMPROVE ITS PRODUCTS  
WHENEVER IT IS POSSIBLE AND PRACTICAL TO DO SO. WE RESERVE THE RIGHT TO  
MAKE CHANGES OR ADD IMPROVEMENTS AT ANY TIME WITHOUT INCURRING ANY  
OBLIGATION TO MAKE SUCH CHANGES ON PRODUCTS.**

BRUTE™ is a trademark of Briggs & Stratton Yard Power Products.

Copyright© 2008 Briggs & Stratton Power Products Group. All rights reserved. No part of this page can be reproduced or transmitted in any form by any means without the express written permission of Briggs & Stratton Power Products Group.

**Briggs & Stratton Yard Power Products Group**

3515 N. 124 Street / PO Box 702  
Wauwatosa, WI 53222 USA

[www.brutepower.com](http://www.brutepower.com)

© Copyright 2009 by Briggs & Stratton Corporation  
Milwaukee, WI, USA. All rights reserved