



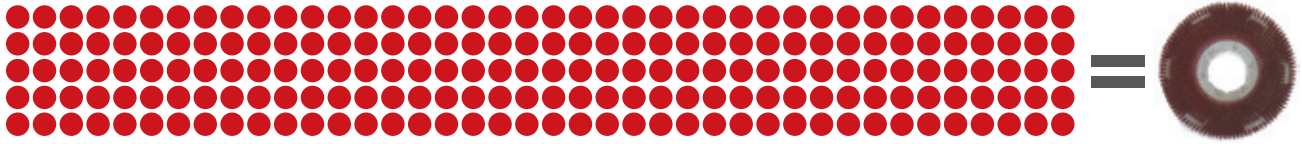
ROTARY BRUSHES

Carlisle's Flo-Pac® professional floor machine brushes are designed to make floor cleaning chores easier. Our rotary brushes and accessories are long-wearing and durable.

Product	Page
Carpet Cleaning Brushes & Accessories	142
Clutch Plates & Lugs	146
Colortech™ Rotary Brushes	136
Concrete Floor Preparation Tools	144
Machine Listings	154
Pad Driver Brushes & Accessories	140
Polishing Brushes	140

Product	Page
Rotary Bristle Material Guide	149
Rotary Brush Guide	150
Scrubbing Brushes	138
Selecting the Proper Rotary Brush	148
Stripping Brushes	139
Wood Floor Preparation Tools	145

**Only Colortech Rotary Brushes
Outlast Floor Pads More Than 200 To 1***



Rotary Brushes are the simple floor care solution. They clean more effectively, using nylon filament impregnated with Silicon Carbide grit. And, we offer a wide selection of rotary brushes to match all of your floor care needs including stripping, scrubbing and general cleaning of high traffic areas in office buildings, malls, schools, hospitals, and stores.

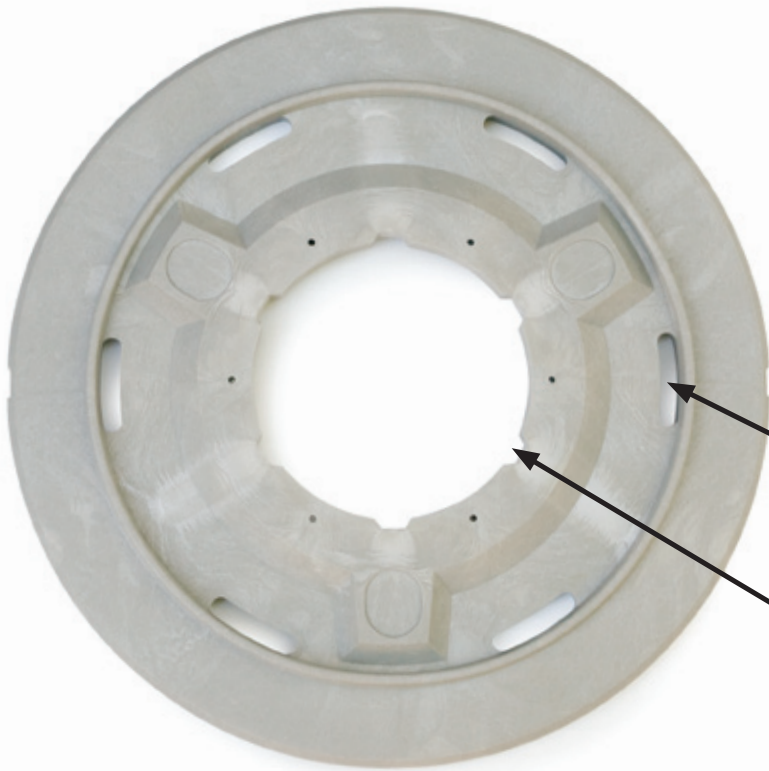
** Based on an independent 2009 University of Illinois Colortech Rotary Brush Study – Durability/Sustainability*

Advantages over pads:

- Rotary brushes outlast floor pads more than 200 to 1, ultimately saving time and money
- Reduces packaging, storage and waste
- Lowers labor cost by reducing change out frequency and time
- Eliminates pad tearing and the need to re-center pads
- All rotary brushes utilize durable plastic blocks specially constructed to provide long lasting, superior performance
- Brushes perform well on all types of surfaces including new or old floors with uneven surfaces
- Solution feed design allows cleaning solution to flow through rotary brush block for thorough cleaning



Showerfeed Rotary Block



Solution Feed Holes have been redesigned for better usage and a more even coverage. This improvement alone proves to be 10 times more effective at directing solution for utilization.

Interlocking design increases the durability of the riser and the block.



Riser Installation

Interlocking Riser comes with Stainless Steel fasteners for securing the connection to the Rotary Brush Block.



Wear Indicator

The wear indicator tab is a non-marking visual indicator for when it is time to replace the rotary brush.

Online Tools

Check out our two online tools which aid in the transition from pads to brushes.



www.carlisesmp.com/colortech_calc



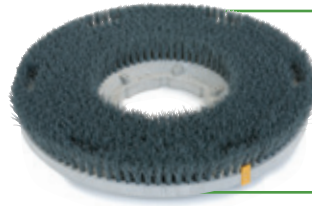
www.carlisesmp.com/rotarywizard

Colortech™ BRUSH LINEUP



Daily Cleaning For all High Gloss Floor Surfaces

- Specifically designed for daily cleaning of all High Gloss floor surfaces while still maintaining floor shine
- For daily cleaning of ceramic tile, concrete, marble, quarry tile, slate, terrazzo and VCT
- Irregular bristle length to assure cleaning on uneven surfaces
- Available in 11" – 20" diameter showerfeed blocks
- Great for grout lines less than .5" in width



Light Cleaning Replaces Light Green Pad

- For light to medium cleaning of ceramic tile, concrete, marble, quarry tile, rubber floors, slate, terrazzo and VCT
- .018" nylon fibers impregnated with 500 grit silicon carbide
- Available in 11" – 20" diameter showerfeed blocks with 1.5" trim
- Great for grout lines less than .5" in width



Cleaning Replaces Red Pads

- For medium to mildly aggressive cleaning of ceramic tile, concrete, marble, non-slip flooring, quarry tile, rubber, slate, terrazzo and VCT
- .022" nylon fibers impregnated with 320 grit silicon carbide
- Available in 11" – 20" diameter showerfeed blocks with 1.5" trim
- Great for grout lines less than .5" in width



Scrubbing Replaces Blue Pads

- For aggressive top scrubbing of ceramic tile, rubber, terrazzo and VCT
- .035" nylon fibers impregnated with 180 grit silicon carbide
- Available in 11" – 19" diameter showerfeed blocks with 1.5" trim
- Great for grout lines less than .5" in width



Stripping Replaces Black Pads

- Excellent for scrubbing of concrete and stripping of quarry tile, terrazzo and VCT
- .050" nylon fibers impregnated with 80 grit silicon carbide
- Available in 9" – 21" diameter showerfeed blocks with 1.5" trim
- Great for grout lines .5" or greater in width



Aggressive Stripping Replaces High Productivity Pads

- Aggressive scrubbing of concrete and aggressive stripping of terrazzo and VCT
- .060" nylon fibers impregnated with 46 grit silicon carbide
- Available in 11" – 20" diameter showerfeed blocks with 1.5" trim
- Great for grout lines .5" or greater in width



Concrete Floor Care

- Our most aggressive brush for scrubbing heavy soil from concrete in industrial applications
- .070" nylon fibers impregnated with 36 grit silicon carbide
- Available in 11" – 20" diameter showerfeed blocks with 1.5" trim

Daily Cleaning Brush – High Gloss Surfaces

Replaces Lt. Green & Red Pads

Block Dia	Prod No
11"	361100HG
12"	361200HG
12.5"	N/A
13"	361300HG
13.5"	N/A
14"	361400HG
15"	361500HG
16"	361600HG
16.5"	N/A
17"	361700HG
18"	361800HG
19"	361900HG
20"	362000HG

Green Brush – Light Cleaning

Replaces Light Green Pads

Block Dia	Prod No
11"	361100G18-5N
12"	361200G18-5N
12.5"	361250G18-5N
13"	361300G18-5N
13.5"	361350G18-5N
14"	361400G18-5N
15"	361500G18-5N
16"	361600G18-5N
16.5"	361650G18-5N
17"	361700G18-5N
18"	361800G18-5N
19"	361900G18-5N
20"	362000G18-5N

Red Brush – General Cleaning

Replaces Red Pads

Block Dia	Prod No
11"	361100G22-5N
12"	361200G22-5N
12.5"	361250G22-5N
13"	361300G22-5N
13.5"	361350G22-5N
14"	361400G22-5N
15"	361500G22-5N
16"	361600G22-5N
16.5"	361650G22-5N
17"	361700G22-5N
18"	361800G22-5N
19"	361900G22-5N
20"	362000G22-5N

Blue Brush – Scrubbing

Replaces Blue Pads

Block Dia	Prod No
11"	361100G35-5N
12"	361200G35-5N
12.5"	N/A
13"	361300G35-5N
13.5"	N/A
14"	361400G35-5N
15"	361500G35-5N
16"	361600G35-5N
16.5"	N/A
17"	361700G35-5N
18"	361800G35-5N
19"	361900G35-5N
20"	N/A

Black Brush – Stripping

Replaces Black Pads

Block Dia	Prod No
* 9"	360900G50
10"	361000G50
11"	361100G50-5N
12"	361200G50-5N
13"	361300G50-5N
14"	361400G50-5N
15"	361500G50-5N
16"	361600G50-5N
17"	361700G50-5N
18"	361800G50-5N
19"	361900G50-5N
20"	362000G50-5N
21"	362100G50

Purple Brush – Aggressive Stripping

Replaces High Productivity Pads

Block Dia	Prod No
* 9"	N/A
10"	N/A
11"	361100G60-5N
12"	361200G60-5N
13"	361300G60-5N
14"	361400G60-5N
15"	361500G60-5N
16"	361600G60-5N
17"	361700G60-5N
18"	361800G60-5N
19"	361900G60-5N
20"	362000G60-5N
21"	N/A

Brown Brush – Concrete Floor Care

Block Dia	Prod No
*9"	N/A
10"	N/A
11"	361100G70-5N
12"	361200G70-5N
13"	361300G70-5N
14"	361400G70-5N
15"	361500G70-5N
16"	361600G70-5N
17"	361700G70-5N
18"	361800G70-5N
19"	361900G70-5N
20"	362000G70-5N
21"	N/A

* Available in wood block only

SCRUBBING BRUSHES

These long-wearing rotary brushes with stiff bristles are designed for general scrubbing. Available in a choice of bassine, polypropylene, or nylon.

Bassine

- Stiff fiber for general scrubbing
- Available in 11" - 20" diameter blocks with 1.75" trim



Bassine

Polypropylene (Poly)

- For economical, general scrubbing
- .028" stiff bristles for general scrubbing, available in 10" - 21" diameter showerfeed blocks with 1.75" trim
- .022" medium bristles for light general scrubbing, available in 11" - 20" diameter showerfeed blocks with 1.75" trim



Polypropylene

Nylon

- Long-wearing, general scrub rotary brush
- Extra stiff .032" bristles for extra tough scrubbing, available in 11" - 20" diameter showerfeed blocks with 1.75" trim
- .018" stiff bristles for general scrubbing, available in 10" - 20" diameter showerfeed blocks with 1.75" trim
- .022 medium bristles for light general scrubbing, available in 11" - 20" diameter showerfeed blocks with 1.75" trim
- .012 soft bristles for scrubbing marble and finished concrete, available in 11" - 20" diameter showerfeed blocks with 1.75" trim



Nylon

Scrubbing Brushes

Bassine

Block Dia	Prod No
10"	N/A
11"	361100BA-5N
12"	361200BA-5N
13"	361300BA-5N
14"	361400BA-5N
15"	361500BA-5N
16"	361600BA-5N
17"	361700BA-5N
18"	361800BA-5N
19"	361900BA-5N
20"	362000BA-5N

Poly .022 (Medium)

Block Dia	Prod No
10"	N/A
11"	361100P22-5N
12"	361200P22-5N
13"	361300P22-5N
14"	361400P22-5N
15"	361500P22-5N
16"	361600P22-5N
17"	361700P22-5N
18"	361800P22-5N
19"	361900P22-5N
20"	362000P22-5N
21"	N/A

Poly .028 (Stiff)

Block Dia	Prod No
10"	361000P28
11"	361100P28-5N
12"	361200P28-5N
13"	361300P28-5N
14"	361400P28-5N
15"	361500P28-5N
16"	361600P28-5N
17"	361700P28-5N
18"	361800P28-5N
19"	361900P28-5N
20"	362000P28-5N
21"	362100P28

Nylon .012 (Soft)

Block Dia	Prod No
10"	N/A
11"	361100N12-5N
12"	361200N12-5N
13"	361300N12-5N
14"	361400N12-5N
15"	361500N12-5N
16"	361600N12-5N
17"	361700N12-5N
18"	361800N12-5N
19"	361900N12-5N
20"	362000N12-5N

Nylon .022 (Medium)

Block Dia	Prod No
10"	N/A
11"	361100N22-5N
12"	361200N22-5N
13"	361300N22-5N
14"	361400N22-5N
15"	361500N22-5N
16"	361600N22-5N
17"	361700N22-5N
18"	361800N22-5N
19"	361900N22-5N
20"	362000N22-5N

Nylon .028 (Stiff)

Block Dia	Prod No
10"	361000N28
11"	361100N28-5N
12"	361200N28-5N
13"	361300N28-5N
14"	361400N28-5N
15"	361500N28-5N
16"	361600N28-5N
17"	361700N28-5N
18"	361800N28-5N
19"	361900N28-5N
20"	362000N28-5N

Nylon .032 (Heavy)

Block Dia	Prod No
10"	N/A
11"	361100N32-5N
12"	361200N32-5N
13"	361300N32-5N
14"	361400N32-5N
15"	361500N32-5N
16"	361600N32-5N
17"	361700N32-5N
18"	361800N32-5N
19"	361900N32-5N
20"	362000N32-5N

Steel Wire

Block Dia	Prod No
10"	N/A
11"	361100W30-5N
12"	361200W30-5N
13"	361300W30-5N
14"	361400W30-5N
15"	361500W30-5N
16"	361600W30-5N
17"	361700W30-5N
18"	361800W30-5N
19"	361900W30-5N
20"	362000W30-5N

Stripping Brushes

Steel Wire

- For stripping and scrubbing of rough concrete surfaces
- High carbon steel, 30 ga. wire fill
- Available in 11" - 20" diameter blocks with 1.56" trim

Steel Wire



POLISHING BRUSH

Union

- A blend of palmyra and white tampico fiber for general purpose polishing
- Available in 11" - 20" diameters with 1.75" trim

Union

Block Dia	Prod No
11"	361100UN-5N
12"	361200UN-5N
13"	361300UN-5N
14"	361400UN-5N
15"	361500UN-5N
16"	361600UN-5N
17"	361700UN-5N
18"	361800UN-5N
19"	361900UN-5N
20"	362000UN-5N

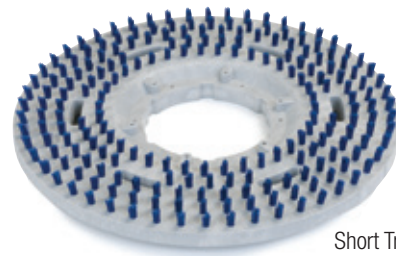


Union

PAD DRIVER BRUSHES & ACCESSORIES

Short Trim Pad Driver

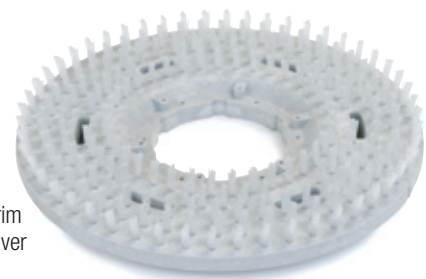
- .5" long, polypropylene bristles unevenly trimmed and widely spaced to hold a floor pad
- Available in 11" - 20" diameter
- Can be converted for use on some high speed machines*
- Order with riser 3613511 for use with swing machines



Short Trim Pad Driver

Long Trim Pad Driver

- Stiff polypropylene bristles trimmed to 1" long
- Available in 9" - 22" diameter blocks



Long Trim Pad Driver

* Prep charge may be required, which includes cutting the center hole and static balancing. Check the machine listing on pages 154-164 or call Customer Service for more information.

PAD DRIVER BRUSHES & ACCESSORIES

Pad Grab® Pad Holder

- Unique three piece construction, teeth on base and washer hold pad in place, retainer slides on the washer for easy pad installation and removal
- Fits most pads, from stripping to buffing
- Holds pads on center without tearing
- Molded of high-impact plastic for extra strength
- Easily and securely fastens to brush block with six screws, included



363522 – Pad Grab Pad Holder

Pad Grab 2000 Pad Holder

- Includes 6 screws for easy mounting
- Made of high impact polymer for extra strength and long life
- Attaches quickly to different pad thicknesses and holds the pad on center without tearing
- Retainer ring always seats itself for proper pad positioning and leveling
- Eliminates right/left rotation considerations



363523 – Pad Grab 2000 Pad Holder

Pad Driver Brushes & Accessories

Short Trim Pad Driver

Block Dia	Prod No
* 9"	N/A
10"	N/A
11"	361100PDS-5N
12"	361200PDS-5N
13"	361300PDS-5N
14"	361400PDS-5N
15"	361500PDS-5N
16"	361600PDS-5N
17"	361700PDS-5N
18"	361800PDS-5N
19"	361900PDS-5N
20"	362000PDS-5N
21"	N/A
22"	N/A

* Available in wood block only

Long Trim Pad Driver

Block Dia	Prod No
* 9"	360900PDL
10"	361000PDL
11"	361100PDL-5N
12"	361200PDL-5N
13"	361300PDL-5N
14"	361400PDL-5N
15"	361500PDL-5N
16"	361600PDL-5N
17"	361700PDL-5N
18"	361800PDL-5N
19"	361900PDL-5N
20"	362000PDL-5N
21"	362100PDL
22"	362200PDL

* Available in wood block only

Pad Grab Pad Holders

Block Dia	Prod No
Pad Grab	363522
Pad Grab 2000	363523

Warning: Do not use brushes, pads, or tools with flammable materials as serious bodily injury could result.

CARPET CLEANING BRUSHES & ACCESSORIES

Karpet Kare™ Nylon

- Excellent for general scrubbing
- 11" - 20" showerfeed blocks with 1.75" trim
- Outer rows of .028" nylon bristles and inner rows of .022" nylon bristles
- Requires a few minutes of concrete surface "break-in" operation before use



Karpet Kare Nylon

Nylon

- Long wearing nylon for effective carpet cleaning
- Available in .028" stiff nylon in 10" to 20" diameter showerfeed blocks for general cleaning; or .022" medium stiff nylon in 11" - 20" diameter showerfeed blocks for light cleaning; 1.75" trim



Nylon

Polypropylene

- For economical carpet cleaning
- .022" polypropylene bristles with a 1.75" trim
- Available in 11" - 20" diameter showerfeed blocks



Polypropylene

Dirt Napper System®

- Carpet Cleaning System consisting of a polyester brush and a bonnet for fast, effective cleaning
- Outside rows of 1.25" trim bristles scrub carpet
- Inside rows of .31" trim bristles hold absorbent looped microfiber bonnet in place
- Available in 15", 17", 18", and 19" diameter plastic blocks with 1" riser
- Replacement bonnets available, specify Dirt Napper size when ordering, packed 6 per case



Dirt Napper System

Dirt Napper System®

Adjust-A-Glide®

- Polyester bristle brush effectively scrubs carpet while the smooth glide plate supports the weight of the machine for easier operator handling, while reducing operator fatigue
- .025" for general cleaning; or .018" for light cleaning
- Available in 12" - 18" diameter showerfeed plastic blocks



Adjust-A-Glide

Clutch Plates for Carpet Cleaning Brushes are sold separately.
See Machine Listing on pages 154-164 for recommended Clutch Plate.

Carpet Cleaning Brushes & Accessories

Karpet Kare Nylon Outer Rows .028 (Stiff) Inner Rows .022 (Med.)

Block Dia	Prod No
10"	N/A
11"	361100NDF-5N
12"	361200NDF-5N
13"	361300NDF-5N
14"	361400NDF-5N
15"	361500NDF-5N
16"	361600NDF-5N
17"	361700NDF-5N
18"	361800NDF-5N
19"	361900NDF-5N
20"	362000NDF-5N

Nylon .028 (Stiff)

Block Dia	Prod No
10"	361000N28
11"	361100N28-5N
12"	361200N28-5N
13"	361300N28-5N
14"	361400N28-5N
15"	361500N28-5N
16"	361600N28-5N
17"	361700N28-5N
18"	361800N28-5N
19"	361900N28-5N
20"	362000N28-5N

Nylon .022 (Medium)

Block Dia	Prod No
10"	N/A
11"	361100N22-5N
12"	361200N22-5N
13"	361300N22-5N
14"	361400N22-5N
15"	361500N22-5N
16"	361600N22-5N
17"	361700N22-5N
18"	361800N22-5N
19"	361900N22-5N
20"	362000N22-5N

Poly .022 (Medium)

Block Dia	Prod No
10"	N/A
11"	361100P22-5N
12"	361200P22-5N
13"	361300P22-5N
14"	361400P22-5N
15"	361500P22-5N
16"	361600P22-5N
17"	361700P22-5N
18"	361800P22-5N
19"	361900P22-5N
20"	362000P22-5N

Dirt Napper System

Block Dia	Prod No
10"	N/A
11"	N/A
12"	N/A
13"	N/A
14"	N/A
15"	361500DN-5N
16"	N/A
17"	361700DN-5N
18"	361800DN-5N
19"	361900DN-5N
20"	N/A

Carpet Cleaning Accessories

Block Dia	Prod No
Bonnet for 15" Dirt Napper	361300DNB
Bonnet for 17" and 18" Dirt Napper	361500DNB
Bonnet for 19" Dirt Napper	361700DNB

Adjust-A-Glide .018 (Soft)

Block Dia	Prod No
10"	N/A
11"	N/A
12"	361200A18-5N
13"	361300A18-5N
14"	361400A18-5N
15"	361500A18-5N
16"	361600A18-5N
17"	361700A18-5N
18"	361800A18-5N
19"	N/A
20"	N/A

Adjust-A-Glide .025 (Stiff)

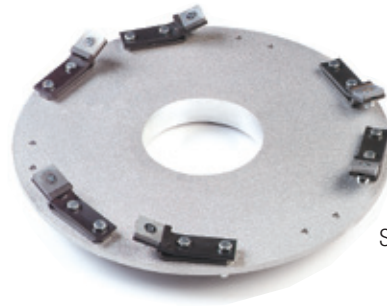
Block Dia	Prod No
10"	N/A
11"	N/A
12"	361200A25-5N
13"	361300A25-5N
14"	361400A25-5N
15"	361500A25-5N
16"	361600A25-5N
17"	361700A25-5N
18"	361800A25-5N
19"	N/A
20"	N/A

Warning: Do not use brushes, pads, or tools with flammable materials as serious bodily injury could result.

CONCRETE FLOOR PREPARATION TOOLS

Scrape-Away®

- The productive, economical, and environmentally safe method for scraping and preparing concrete floors and stripping of film coatings, packed soils, ice, etc
- Equipped with 6 replaceable carbon steel cutter blades; each blade has 8 cutting edges; three replacement blades per set
- Available in 13", 15", and 17" sizes
- Scrape-Away can be fit with Grind-Away grit blocks
- Order 2" smaller than machine size



Scrape-Away

Scrape-Away

Block Dia	Prod No
13"	361300CC
15"	361500CC
17"	361700CC

Scrape-Away Accessories

Block Dia	Prod No
Brackets, Springs & Cutter Blades (set of 3)*	363525
Cutter Blades (set of 3)*	363526
Brackets & Springs (set of 3)*	363527

* Standard Scrape-Away uses 2 sets



363526

Scrape-Away and Grind-Away tools are designed for use only on 175 rpm rotary machines with 1 HP or greater. The heavy-duty circular aluminum casting has a 5" center hole, and an "N" series clutch plate is required. These tools cannot be used with riser blocks. When the machine listing on pages 154-164 recommends a "P" series universal clutch plate, use the proper "N" series clutch plate from the table below.

Important: All concrete floor tools are designed for use only by experienced rotary floor machine operators wearing protective eyewear, footwear, and dust mask. Always use the proper size standard 175 rpm rotary floor machine, equipped with the proper heavy-duty "N" series clutch plate. Do not use with "P" series or 364101 series universal clutch plates. Do not use with flammable materials.

Grind-Away®

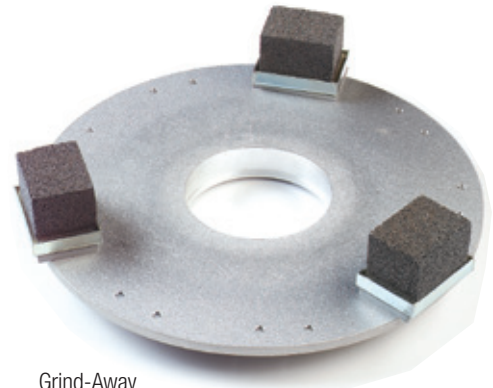
- For smoothing and finishing after concrete patchwork
- Equipped with three replaceable silicon carbide grit blocks; three replacement grit blocks per set
- Available in 15" and 17" sizes.
- Grind-Away can be fit with Scrape-Away cutting hardware
- For dry use only
- Order 2" smaller than machine size

Grind-Away

Block Dia	Prod No
15"	361500GA
17"	361700GA

Grind-Away Accessories

Block Dia	Prod No
Grit Block Kit (set of 3)	3635828

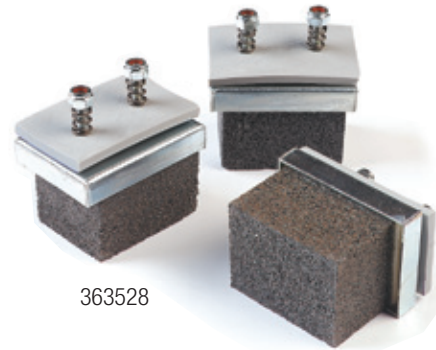


Grind-Away

N Series Metal Plate

Prod No		Prod No.
364183N	Instead of	364183P
364192N	Instead of	364192P
364147N	Instead of	364147P
364146N	Instead of	364146P

Universal Plate



363528

Warning: Do not use brushes, pads, or tools with flammable materials as serious bodily injury could result.



364146N

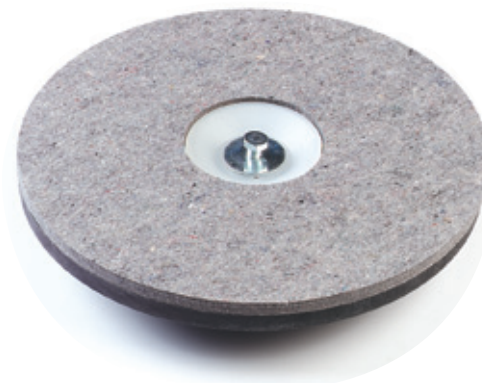
WOOD FLOOR PREPARATION TOOLS

Sand-Away® Sanding Disk Driver for Wood Floors

- Durable plastic block with the finest quality felt face and a molded plastic holding cup securely holds sandpaper discs
- Equipped with a 1.44" plastic riser with 5" center hole for use with Plastic Universal Clutch Plates or Standard Metal Universal Clutch Plates
- Available in 15", 16", 17", and 19" sizes

Sand-Away

Block Dia	Prod No
15"	361500SA-5N
16"	361600SA-5N
17"	361700SA-5N
19"	361900SA-5N



Sand-Away

Warning: Do not use brushes, pads, or tools with flammable materials as serious bodily injury could result.

CLUTCH PLATES & LUGS

Clutch Plates

Clutch plates available in standard metal, plastic, or heavy-duty metal. Refer to the cross reference chart at the bottom of this page for options.

Standard (Metal) Universal Clutch Plates

- Cast of durable zinc alloy with a 5" center hole
- Can be used instead of plastic ("P" Series) plates for the same applications
- Numbers for plates are listed in the table



364101A



364101E

Plastic Universal Clutch Plates

- Durable ("P" Series) plates molded to the same tight dimensions as metal counterparts with a 5" center hole and are recommended for most applications
- Plastic plates won't stick to the drive hub; makes installation and removal easy



364183P

Heavy-Duty (Metal) "N" Series Clutch Plates

- Required for the roughest applications using Scrape-Away® and Grind-Away® tools



364183N



364192N



364147N

Metal Universal 5" CH

Plastic Universal 5" CH

Heavy-Duty "N" Series 5" CH

Prod No	Prod No	Prod No
364101A	364183P	364183N
364101B	364192P	364192N
364101C	364147P	364147N
364101D	364146P	364146N
364101E		

Additional Clip-On Style Plates

- Match OEM design for brushes to fit automatic scrubbers

Clip-On Style Clutch Plates

Center Hole	Prod No
2.95" CH	364103
4.88" CH	364115
5" CH	364105
5" CH	364108
5" CH	364109
5" CH	364110
5" CH	364112



Conventional Style CH

Center Hole	Prod No
3.38" CH	36P9
4" CH	3661238
4" CH	36P3A
5" CH	364148P



Lugs

Metal Lugs

- Match OEM design for mounting on this style drive
- Set of 3 lugs

Lug Style Mounting Sets

Center Hole	Prod No
5.53" CH	36P74
2.88" CH	36P42A
Plastic, 5.53" CH	364174

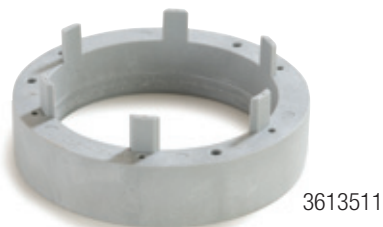


Plastic Riser Blocks

- For use with plastic block brushes
- 1.44" high x 6.5" diameter; specify center hole size

Plastic Riser Block

Size	Prod No
6.5" Dia. (1.44" High) Specify Center Hole Size	3613511



SELECTING THE PROPER ROTARY BRUSH

- Find the make and model number of your floor machine on pages 154-164 to determine the correct brush block size and clutch plate. Additional clutch plate information can be found on pages 146-147. See A1 & A2 as referred.
 - Brushes and long fill pad drivers for single brush, swing machines are usually 2" smaller than the machine size. For example: a 20" machine uses an 18" block.
 - Short trim pad drivers are usually 1" smaller than the machine size. Add 1" to the block size in this table for these drivers.

- Special sizes, or brushes without available plates may require a preparation charge. These are noted by instructions to CALL Customer Service for information and prices.
- Find the brush type for your cleaning application in the Brush Selection Guide on pages 150-153. See figures B1 & B2 as referred.
 - The Rotary Wizard can also determine the item number by machine, make and model number, brush type and/or brush number. Visit www.carlislesmp.com/rotarywizard.

A1

Nilfisk-Advance (Advance)

Model No	Block Dia	Sugg Plate
All Purpose Matador 17	15"	364147P
All Purpose Matador 20	18"	364147P
BA 5321, BA 5321D	20"	364148P
Converta Max 26 (2 brushes)	12"	5.5" CH - 36P74
Convertamatic 17	15"	364147P
Convertamatic 18	16"	5.5" CH - 36P74
Convertamatic 20	18"	364147P
Convertamatic 21	19"	5.5" CH - 36P74

A2

Hardware

Plastic Universal 5" CH

Metal Universal 5" CH

Prod No	Prod No
364183P	364101A
364192P	364101B
364147P	364101C
364146P	364101D

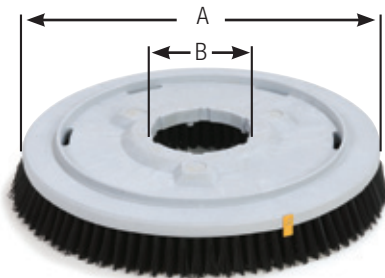


Figure A3

- Flo-Pac® recommends the popular "P" Series Plastic Universal Clutch Plate. Alternate Universal Metal and Heavy-Duty "N" Series Metal Plates are described on page 146.
- When ordered with a brush, clutch plates are mounted with no installation fee.
- If ordering a brush without a clutch plate, or if no plate is available for your model, specify machine model, block diameter (dimension A), and center hole diameter (dimension B). See Figure A3 at left.

B1

Aggressive Stripping

- Replaces High Productivity floor pads
- Aggressive scrubbing of concrete and aggressive stripping of terrazzo and VCT
- Irregular bristle length to assure cleaning on uneven surfaces
- Great for grout lines .5" or greater in width
- .060" nylon fibers impregnated with 46 grit silicon carbide
- Available in 11" - 20" dia showerfeed blocks with 1.75" trim



B2 Stripping Brushes

Aggressive Stripping

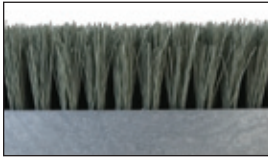
Block Dia	Prod No
Replaces High Productivity Pads	
9"	N/A
10"	N/A
11"	361100G60-5N
12"	361200G60-5N
12.5"	N/A
13"	361300G60-5N
13.5"	N/A
14"	361400G60-5N
15"	361500G60-5N

Clutch plate and riser block charts are listed on page 146-147.

ROTARY BRISTLE MATERIAL GUIDE

Choose the best brush for your specific application. Synthetic materials are the best choice with high quality natural materials as a good alternate. Our fine selection of bristles offers you a choice of solutions for any application.

Synthetic Bristles

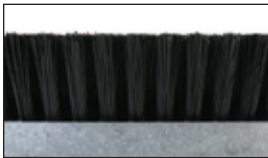


Colortech™ – An aggressive Nylon filament with Silicon Carbide Grit. Use **Colortech** instead of traditional floor pads for all your floor care needs including stripping, scrubbing, and daily maintenance operations. Six grits to choose from, see page 136 for details.

Natural Bristles



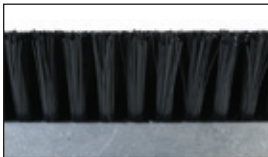
Union Mix – An economical blend of two or more bristle materials, usually Tampico and Palmyra which is used in general floor buffing/polishing operations.



Polypropylene – A synthetic bristle material with more durability than plastic; highly resistant to chemicals, fungus, and bacteria. Ideal for floor care programs that require general scrubbing, wet scrubbing, as well as stripping and re-coating operations.



Bassine – A natural, high quality coarse bristle material for general scrubbing applications. Economical and durable, Bassine does have limitations when compared to synthetic fibers.



Nylon – A durable synthetic bristle material with excellent abrasion resistance and bristle bend recovery. Nylon provides very good chemical resistance and is an excellent bristle choice for general scrubbing.



Steel Wire – Provides excellent chemical resistance and a high degree of abrasion. Primarily used in scrubbing and scarifying concrete floors and surfaces.

Warning:

Do not use brush or pad with flammable materials (fuels, solvents, thinner, etc.) as serious bodily harm or injury could result from possible fire or explosion. Any brush used for carpet cleaning must be broken in properly or carpet damage could result.

ROTARY BRUSH GUIDE

Scrubbing Brushes

Block Dia	Bassine	Poly .022 (Med)	Poly .028 (Stiff)	Nylon .012 (Soft)	Nylon .022 (Med)	Nylon .028 (Stiff)	Nylon .032 (Heavy)	Light Cleaning
9"								
10"			361000P28			361000N28		
11"	361100BA-5N	361100P22-5N	361100P28-5N	361100N12-5N	361100N22-5N	361100N28-5N		361100G18-5N
12"	361200BA-5N	361200P22-5N	361200P28-5N	361200N12-5N	361200N22-5N	361200N28-5N	361200N32-5N	361200G18-5N
12.5"								361250G18-5N
13"	361300BA-5N	361300P22-5N	361300P28-5N	361300N12-5N	361300N22-5N	361300N28-5N	361300N32-5N	361300G18-5N
13.5"								361350G18-5N
14"	361400BA-5N	361400P22-5N	361400P28-5N	361400N12-5N	361400N22-5N	361400N28-5N	361400N32-5N	361400G18-5N
15"	361500BA-5N	361500P22-5N	361500P28-5N	361500N12-5N	361500N22-5N	361500N28-5N	361500N32-5N	361500G18-5N
16"	361600BA-5N	361600P22-5N	361600P28-5N	361600N12-5N	361600N22-5N	361600N28-5N	361600N32-5N	361600G18-5N
16.5"								361650G18-5N
17"	361700BA-5N	361700P22-5N	361700P28-5N	361700N12-5N	361700N22-5N	361700N28-5N	361700N32-5N	361700G18-5N
18"	361800BA-5N	361800P22-5N	361800P28-5N	361800N12-5N	361800N22-5N	361800N28-5N	361800N32-5N	361800G18-5N
19"	361900BA-5N	361900P22-5N	361900P28-5N	361900N12-5N	361900N22-5N	361900N28-5N	361900N32-5N	361900G18-5N
20"	362000BA-5N	362000P22-5N	362000P28-5N	362000N12-5N	362000N22-5N	362000N28-5N	362000N32-5N	362000G18-5N
21"			362100P28-5N					

* Available in wood block only

Scrubbing Brushes

Stripping Brushes

Block Dia	General Cleaning	Scrubbing	Wire	Stripping	Aggressive Stripping	Concrete Floor
9"				360900G50		
10"				361000G50		
11"	361100G22-5N	361100G35-5N	361100W30-5N	361100G50-5N	361100G60-5N	361100G70-5N
12"	361200G22-5N	361200G35-5N	361200W30-5N	361200G50-5N	361200G60-5N	361200G70-5N
12.5"	361250G22-5N					
13"	361300G22-5N	361300G35-5N	361300W30-5N	361300G50-5N	361300G60-5N	361300G70-5N
13.5"	361350G22-5N					
14"	361400G22-5N	361400G35-5N	361400W30-5N	361400G50-5N	361400G60-5N	361400G70-5N
15"	361500G22-5N	361500G35-5N	361500W30-5N	361500G50-5N	361500G60-5N	361500G70-5N
16"	361600G22-5N	361600G35-5N	361600W30-5N	361600G50-5N	361600G60-5N	361600G70-5N
16.5"	361650G22-5N					
17"	361700G22-5N	361700G35-5N	361700W30-5N	361700G50-5N	361700G60-5N	361700G70-5N
18"	361800G22-5N	361800G35-5N	361800W30-5N	361800G50-5N	361800G60-5N	361800G70-5N
19"	361900G22-5N	361900G35-5N	361900W30-5N	361900G50-5N	361900G60-5N	361900G70-5N
20"	362000G22-5N		362000W30-5N	362000G50-5N	362000G60-5N	362000G70-5N
21"				362100G50		

* Available in wood block only

ROTARY BRUSH GUIDE (CONT)

Clutch Plates

5" CH Clutch Plates

Metal Universal	Plastic Universal	Heavy Duty "N" Series
364101A	364183P	364183N
364101B	364192P	364192N
364101C	364147P	364147N
364101D	364146P	364146N
364101E		

Clip-On Style Clutch Plates

Conventional Style CH Clutch Plates

Prod No	Prod No
364103	36P3A
364105	—
364108	—
364109	—
364110	—
364112	—
364115	3661238
	364148P

Polishing Brushes

Pad Drivers

Block Dia	Tampico	Union	Short Trim	Long Trim
9"				360900PDL
10"				361000PDL
11"	361100TM-5N	361100UN-5N	361100PDS-5N	361100PDL-5N
12"	361200TM-5N	361200UN-5N	361200PDS-5N	361200PDL-5N
13"	361300TM-5N	361300UN-5N	361300PDS-5N	361300PDL-5N
14"	361400TM-5N	361400UN-5N	361400PDS-5N	361400PDL-5N
15"	361500TM-5N	361500UN-5N	361500PDS-5N	361500PDL-5N
16"	361600TM-5N	361600UN-5N	361600PDS-5N	361600PDL-5N
17"	361700TM-5N	361700UN-5N	361700PDS-5N	361700PDL-5N
18"	361800TM-5N	361800UN-5N	361800PDS-5N	361800PDL-5N
19"	361900TM-5N	361900UN-5N	361900PDS-5N	361900PDL-5N
20"	362000TM-5N	362000UN-5N	362000PDS-5N	362000PDL-5N
21"				362100PDL
22"				362200PDL

Accessories

Prod No	Prod Description
3613511	Plastic Riser Block
36P74	Lug Style Mounting Sets
36P42A	Lug Style Mounting Sets
364174	Lug Style Mounting Sets
363522	Pad Grab®
363523	Pad Grab® 2000

* Available in wood block only

Carpet Cleaning Brushes

Block Dia	Nylon Outer - .028 Inner - .022	Nylon .028 (Stiff)	Nylon .022 (Med)	Poly .022 (Med)	Adjust-A- Glide® .025 (Stiff)	Adjust-A- Glide® .018 (Soft)	Dirt Napper System®
10"		36100N28					
11"	361100NDF-5N	361100N28-5N	361100N28-5N	361100P22-5N			
12"	361200NDF-5N	361200N28-5N	361200N28-5N	361200P22-5N	361200A25-5N	361200A18-5N	
13"	361300NDF-5N	361300N28-5N	361300N28-5N	361300P22-5N	361300A25-5N	361300A18-5N	
14"	361400NDF-5N	361400N28-5N	361400N28-5N	361400P22-5N	361400A25-5N	361400A18-5N	
15"	361500NDF-5N	361500N28-5N	361500N28-5N	361500P22-5N	361500A25-5N	361500A18-5N	361500DN-5N
16"	361600NDF-5N	361600N28-5N	361600N28-5N	361600P22-5N	361600A25-5N	361600A18-5N	
17"	361700NDF-5N	361700N28-5N	361700N28-5N	361700P22-5N	361700A25-5N	361700A18-5N	361700DN-5N
18"	361800NDF-5N	361800N28-5N	361800N28-5N	361800P22-5N	361800A25-5N	361800A18-5N	361800DN-5N
19"	361900NDF-5N	361900N28-5N	361900N28-5N	361900P22-5N			361900DN-5N
20"	362000NDF-5N	362000N28-5N	362000N28-5N	362000P22-5N			

Carpet Cleaning Accessories

Prod No	Prod Description
361300DNB	Bonnet for 15" Dirt Napper
361500DNB	Bonnet for 17" and 18" Dirt Napper
361700DNB	Bonnet for 19" Dirt Napper

MACHINE LISTINGS

The listings below will assist you in selecting the correct brush block size and clutch plate for your equipment.

- Scrubbing brushes and long-trim pad drivers are usually 2" smaller than the machine size. This is the block diameter listed in the table.
- Short-trim pad drivers are usually 1" smaller than the machine size. Add 1" to the block size listed in this table for short-trim pad drivers.

- Automatic scrubbers will use brushes, short-trim pad drivers, and long-trim pad drivers as listed in this table.

Brushes for certain machine models may require special preparation, or may be available in select fill types.

Call Customer Service at 800-654-8210 for information on machines not listed.

Machine Manufacturer's Model No	Block Dia	Suggested Plate
Advance (Nilfisk-Advance)		
See Nilfisk-Advance on pages 159-160.		
American-Lincoln		
22	20"	364192P
66 (2 brushes)	14"	CALL*
81 (2 brushes)	17"	CALL*
121	19"	364192P
151, 156, 161	14"	364192P
150 Series	12"	364192P
152 Series	17"	364192P
153 Series	21"	364192P
160 Series	12"	364192P
161	14"	364192P
162 Series	17"	364192P
189	15"	364192P
191-11, 191-15	13"	364192P
192, 198	15"	364192P
193 Series	12"	364192P
197 Series	13"	364192P
215, 216	14"	364192P
221, S221	19"	364192P
301	18"	364192P
317	15"	364192P
319	17"	364192P
320	18"	364192P
321	19"	364192P
322	20"	364192P
518 Series sectional (6 per set)	L250	36L250
524 Series sectional (8 per set)	L250	36L250
530 Series sectional (10 per set)	L250	36L250
537, 538 sectional (12 per set)	L250	36L250
560 Series sectional (20 per set)	L250	36L250
620 Series sectional (7 per set)	L250	36L250
721	19"	364192P
or sectional (7 per set)	L250	36L250
726 (2 brushes)	13" - 4" CH	N/A
730 (2 brushes)	14" - 4" CH	N/A
or sectional (10 per set)	L250	—
750 sectional (18 per set)	L250	—
772 sectional (24 per set)	L250	—

Machine Manufacturer's Model No	Block Dia	Suggested Plate
American-Lincoln (cont.)		
930i (2 brushes)	14"	36L250
or sectional (10 per set)	L250	—
934 (2 brushes)	17"	36L250
or sectional (14 per set)	L250	—
936 (2 brushes)	17" - 4" CH	N/A
or sectional (14 per set)	L250	—
950, 960 (3 brushes)	14"	36L250
or sectional (18 per set)	L250	—
1030 (2 brushes)	14"	36L250
or sectional (12 per set)	L250	—
6200, 6700 (3 brushes)	14"	36L250
BP21 sectional (7 per set)	L250	—
Aztec		
Power Scrub 20	19" - 5.53" CH	36P74
ProScrub 20	19" - 5.53" CH	36P74
Betco/Powerbuff		
20HD	18"	364192P
32	16"	36P74
AS2600B, AS2600T (2 brushes)	13" - 5.53" CH	36P74
AS3200 (2 brushes)	16" - 5.53" CH	36P74
FL 17, FL 17HD, FL 17DS	15"	364192P
FL 19, FL 19HD, FL 19DS	17"	364192P
Foreman 32 (2 brushes)	16"	36P74
Breuer (Tornado)		
See Tornado on pages 163-164.		
Cassidy (Clean-O-Matic)		
12	10"	364192P
14, 14A, 140	12"	364192P
15, VP-15, 150	13"	364192P
16, 160	14"	364192P
17, VP-17, 170	15"	364192P
190	17"	364192P
20, VP-20	18"	364192P
23, 230, 230A	21"	364192P
Clarke		
820	19"	364192P
1700 Mini-Scrubber	17"	CALL*
2000 Mini-Scrubber	18"/19"	CALL*
2400 (2 brushes)	13"	CALL*

CALL* – Call Customer Service at 800-654-8210 for brush types available in these special sizes.

WARNING: Do not use brushes, pads, or tools with flammable materials as serious bodily injury could result.

Machine Manufacturer's Model No	Block Dia	Suggested Plate
Clark (cont.)		
Burnisher 1000, 1500, 2000 - high speed pad driver	18"	CALL*
Burnisher 2000B, 2000E- high speed pad driver	19"	CALL*
C-15	13"	364192P
C-16, C-1600	14"	364192P
C-18, C-1800	16"	364192P
C-20, C-2000	18"	364192P
C-22	20"	364192P
C2K 13	11"	364192P
C2K 16, C2K 160, C2K 1600, C2K 1600HS, C2K 1600DS	14"	364192P
C2K 18, C2K 180, C2K 1800, C2K 1800HS	16"	364192P
C2K 200, C2K 2000, C2K 2000HS, C2K 2000DS	18"	364192P
CFP-130	11"	364183P
CFP-170, 1700	15"	364183P
CFP-200, 2000, 2000DS	18"	364147P
Compact Leader 1700B, 1700E	16"/17"	CALL*
Compact Leader 2000B, 2000E	18"/19"	CALL*
E-15	13"	364192P
EM-16	14"	364192P
E-18	16"	364192P
Encore L17	16/17"	CALL*
Encore L20, S20, S20E	18"/19"	CALL*
Encore L28, S28 (2 brushes)	14"	CALL*
Encore L33, S33, R34 (2 brushes)	17"	CALL*
Encore L38, R38, S38 (2 brushes)	19"	CALL*
Encore L2426 (2 brushes)	13"	CALL*
Encore S2426 (2 brushes)	13"	CALL*
FM-11, FM-1100D	9" - 3.38" CH	36P9
FM-12, FM-12R	10" - 3.38" CH	36P9
FM-1300 (old)	11" - 3.38" CH	36P9
FM-13 (new)	11"	364192P
FM-14	12"	364192P
FM-15, FM-1500	13"	364192P
F-16, FM-16	14"	364192P
FM-17	15"	364192P
FM-1700	15"	364147P
FM-18	16"	364192P
FM-20	18"	364192P
FM-2000	18"	364147P
FM-23	21"	364192P
FM-2300	21"	364147P
Focus 28 (2 brushes)	14"	364105
Focus 33 (2 brushes)	17"	CALL*
Focus 34 (2 brushes)	17"	364105
Focus 38 (2 brushes)	19"	CALL*
Focus II S20	18"	364148P

Machine Manufacturer's Model No	Block Dia	Suggested Plate
Clark (cont.)		
Focus II 26	13"	CALL*
GM-15	13"	364192P
GM-17	15"	364192P
GM-18	16"	364192P
LP-80, LP-136	15"	364192P
Leader 2400 (2 brushes) high speed pad driver	13"	CALL*
Leader 3200, 3400 (2 brushes) high speed pad driver	17"	CALL*
MP-18	16"	364192P
P-11	9" - 3.38" CH	36P9
P-12	10" - 1.75" CH	N/A
P-13	11"	364192P
P-15	13"	364192P
P-17	15"	364192P
P-20	18"	364192P
PE-20	19"	364192P
P-22	20"	364192P
P-23	21"	364192P
S-13	11"	364192P
S-16	14"	364192P
S-18	16"	364192P
S-20, SS-20	18"	364192P
TB-18 (2 brushes)	9" - 2.5" CH	N/A
TB-20E, TB-21E (2 brushes)	10"	CALL*
TB-24 sectional (8 per set)	C240	—
TB-32 sectional (8 per set)	C370	—
TB-60 (2 brushes) - high speed pad driver	13"	CALL*
TB-60 sectional (8 per set)	C260	—
TB-80 (2 brushes)- high speed pad driver	17"	CALL*
TB-80 sectional (8 per set)	C380	—
Vantage 17	15"	364148P
VP-16	14"	364192P
VP-18	16"	364192P
VP-20	18"	364192P
Vision 17	16"/17"	CALL*
Vision 20	18"/19"	CALL*
Vision 21; 21i (2 brushes)	11"	CALL*
Vision 26 (2 brushes)	14"	CALL*
Vision 32 (2 brushes)	17"	CALL*
Vision 38 (2 brushes)	19"	CALL*
Vision 3400 (2 brushes)	17"	CALL*
Vision V (2 brushes)	13"	CALL*
Crusader		
9013, C-13	11"	364192P
9017, C-17	15"	364192P
9002, C-20, 9003, C-20-2SP	18"	364192P

CALL* – Call Customer Service at 800-654-8210 for brush types available in these special sizes.

WARNING: Do not use brushes, pads, or tools with flammable materials as serious bodily injury could result.

MACHINE LISTINGS (CONT)

Machine Manufacturer's Model No	Block Dia	Suggested Plate
Dart		
15A	13"	364192P
18A	16"	364192P
21A	19"	364192P
123	21"	364192P
130, 131	11"	364192P
140, 141, 142	12"	364192P
150, 151, 152, 153	13"	364192P
160, 161, 162	14"	364192P
170, 171, 172	15"	364192P
190, 191	17"	364192P
323	21"	364192P
341, 342, 343	12"	364192P
360, 361, 362	14"	364192P
371, 372	15"	364192P
390, 391	17"	364192P
410	9"	364192P
423	19"	364192P
430	11"	364192P
451, 452, 453	13"	364192P
482, 483	16"	364192P
623	21"	364192P
630, 631	11"	364192P
641, 642, 643	12"	364192P
661, 662, 663	14"	364192P
672, 673	15"	364192P
692, 693	17"	364192P
723	19"	364192P
751, 752, 753	13"	364192P
782, 783	16"	364192P
823	19"	364192P
863	14"	364192P
873	15"	364192P
893	17"	364192P
921	19"	364192P
923	21"	364192P
961, 962	14"	364192P
971, 972	15"	364192P
991	17"	364192P
Eureka (Sanitaire)		
15 Sanitaire	13"	364192P
17 Sanitaire	15"	364192P
20 Sanitaire	18"	364192P
SC6001	11"	364192P
SC6005	13"	364192P
SC6010, SC6015, SC6030	15"	364192P
SC6025	18"	364192P

Machine Manufacturer's Model No	Block Dia	Suggested Plate
EDIC		
Saturn 17	15"	364192P
Saturn 20	18"	364192P
Factory Cat/Tomcat (RPS)		
21, 2100 (2 brushes)	10"	364108 or 364110**
23, Mini Mag 23	21"	364108 or 364110**
25, 2500 (2 brushes)	12"	364108 or 364110**
250-15	14"	364108 or 364110**
27, 2700 (2 brushes)	13"	364108 or 364110**
29, 29SS, 290D (2 brushes)	14"	364108 or 364110**
3400D, Magnum 34 (2 brushes)	16"	364108 or 364110**
35, 35SS, 350D (2 brushes)	16"	364108 or 364110**
38, 40, 40HD, 3700 (2 brushes)	18"	364108 or 364110**
390D	19"	364108 or 364110**
420D, 430D	21"	364108 or 364110**
490D (2 brushes)	16"	364108 or 364110**
52, 5100 (3 brushes)	17"	364108 or 364110**
550D (2 brushes)	18"	364108 or 364110**
GTX26 (2 brushes)	12"	364108 or 364110**
GTX34 (2 brushes)	16"	364108 or 364110**
Magnum 30 (2 brushes)	14"	364108 or 364110**
Mini Mag 17	16"	364108 or 364110**
Mini Mag 20	19"	364108 or 364110**
SS1017, SS1517HD, SS1517-2S	15"	364192P
SS1020, SS1520 HD, SS1520-2S	18"	364192P
** When ordering rotary brushes, specify clutch plate style: 6 point 364108 or 8 point 364110		
General		
1000 - high speed pad driver	18"	CALL*
2000DC - high speed pad driver	18"	CALL*
GF-15	13"	364192P
GF-17, GVS-17	15"	364192P
GF-19, GVS-19	16"	364192P
GVS-21	18"	364192P
GF-21	18"	364192P
GF-23	20"	364192P
K-12, KC-12, KR-12	11"	364192P
KL-13, KR-13	11"	364192P
KC14DHS	12"	364192P

CALL* – Call Customer Service at 800-654-8210 for brush types available in these special sizes.

WARNING: Do not use brushes, pads, or tools with flammable materials as serious bodily injury could result.

Machine Manufacturer's Model No	Block Dia	Suggested Plate
General (cont.)		
K-14, KC-14, KL-14, KR-14	13"	364192P
K-15, KL-15	13"	364192P
KC16DHS	14"	364192P
K-16, KC-16, KL-16, KR-16	15"	364192P
KC-17, KL-17, KR-17	15"	364192P
KC18DHS	16"	364192P
K-18, KC-18, KR-18	16"	364192P
KC20DHS	18"	364192P
KC-20, KR-20	18"	364192P
K-22, KC-22, KR-22	20"	364192P
S-11	10"	364192P
S-13	11"	364192P
S-15	13"	364192P
S-18	16"	364192P
S-22	20"	364192P
* Floor machine serial number identifies the clutch plate to be used. 84xxx or lower use 364183P. 85xxx or higher take 364192P.		
Graco		
Saturn 24" sectional (8 per set)	36C240	—
Hawk		
HP 1017, HP 1517HD	15"	364192P
HP 1020, HP 1520HD	18"	364192P
Hild		
17-Pro II	15"	364146P
20-Pro II	18"	364146P
22A-Pro II	20"	364146P
A-14	12" - 2.13" CH	N/A
B-11	9" - 2.13" CH	N/A
C-16	14"	364146P
C-18	16"	364146P
C-Master 16	14" - 2.13" CH	N/A
D-19	17"	364146P
D-Master 19	17" - 3.25" CH	N/A
E-24, E-25	22"	364146P
F-22	20"	364146P
G-18	16"	364146P
GP 15A	13"	364146P
H-22	20"	364146P
Hi-20 - high speed pad driver	18"	CALL*
HP-16	14"	364146P
J-25	22"	364146P
JR-11	9" - 2.13" CH	N/A
K-12-1/2, K-13	11"	364146P
L-12, P-12	10"	364146P
L-14, P-14	12"	364146P
L-15	13"	364146P
Mach 1100, 1500 - high speed pad driver	18"	CALL*
P-13	11"	364146P

Machine Manufacturer's Model No	Block Dia	Suggested Plate
Hild (cont.)		
P-15	13"	364146P
P-16	14"	364146P
P-18	16"	364146P
UC-16	14"	364146P
UD-19, UD-219	17"	364146P
VA-14	12"	364146P
Hillyard		
16" Hillboy	14" - 5" CH	N/A
17" Hillboy	15" - 5.63" CH	N/A
21" Hillboy	18" - 5.63" CH	N/A
Deluxe Single 14	12"	364147P
Standard Single 16	14"	364147P
Standard Single 18	16"	364147P
Standard Single 20	18"	364147P
Holt (Pullman-Holt)		
See Pullman-Holt on pages 161-162.		
Hoover		
C5023	14"	364192P
C5025, C5033, C5035	18"	364192P
C5027	16"	364192P
C5029 - high speed pad driver	18"	CALL*
C5031	15"	364192P
F7089	15"	364147P
F7091, F7093	18"	364147P
F7095 - high speed pad driver	18"	CALL*
Huntington		
12, 13	11"	3661238
16, 16B, 16G, 16H	14"	3661238
18, 18P	16"	3661238
20, 20F, 20H	18"	3661238
20J	18"	364192N
Kent/Euroclean		
170E	15"	364192P
A-11	9" - 5" CH	N/A
B-11	9" - 5" CH	N/A
C-13, 13"	11" - 5.63" CH	N/A
C-13, 15"	14" - 5.63" CH	N/A
C-15	15" - 5" CH	N/A
C-18	17" - 5" CH	N/A
D-20	19" - 5" CH	N/A
E-12, E-13	11"	364192P
ECFM 17	15"	364192P
ECFM 20	18"	364192P
GA-15	13"	364192P
GA-17	15"	364192P
GA-20	18"	364192P
K-11	9" - 5" CH	N/A

CALL* – Call Customer Service at 800-654-8210 for brush types available in these special sizes.

WARNING: Do not use brushes, pads, or tools with flammable materials as serious bodily injury could result.

MACHINE LISTINGS (CONT)

Machine Manufacturer's Model No	Block Dia	Suggested Plate
Kent/Euroclean (cont.)		
K-12, KM-13	11" - 5" CH	N/A
K-13, K-14	11" - 5" CH	N/A
K-15, K-16	14" - 5" CH	N/A
K-17, K-17HD	15" - 5" CH	N/A
KA-17 Select Scrub	15"	364192P
KA-18, KB-18 (2 brushes)	9" - 2.88" CH	36P42A
KA-20 (2 brushes)	10"	36P42A
KA-20BT, KA-20E, KA-20B	19"	364192P
KA-26 (2 brushes)	12" - 2.88" CH	36P42A
KA-26BT (2 brushes)	12"/13"	CALL*
KA-26HD (2 brushes)	13" - 2.88" CH	36P42A
KA-27 Dura-Scrub (2 brushes)	13" - 2.88" CH	36P42A
KA-27SS, KA-27SSA Select Scrub (2 brushes)	13" - 2.88" CH	36P42A
KA-32 (2 brushes)	15" - 2.88" CH	36P42A
KA-33 Dura-Scrub (2 brushes)	16" - 2.88" CH	36P42A
KA33BR (2 brushes)	16"	CALL*
KA-33SS, KA-33SSA Select Scrub (2 brushes)	16" - 2.88" CH	36P42A
KA-34BR2 (rider) (2 brushes)	16"	CALL*
KA-39 Dura-Scrub (2 brushes)	19" - 2.88" CH	36P42A
KA-39SS, KA-39SSA Select Scrub (2 brushes)	19" - 2.88" CH	36P42A
KA-171B	15"	364192P
KA-200E, KA-201BST (2 brushes)	10" - 2.88" CH	36P42A
KA-261, KA-262B, KA-265, KA-266EB, 26ERB2 (2 brushes)	13" - 2.88" CH	36P42A
KA-325B (2 brushes)	15" - 2.88" CH	36P42A
KA-326EB, 32ERB2, KA-36 (2 brushes)	15" - 2.88" CH	36P42A
KA-381EB, 38ERB2, KA-38 (2 brushes)	18" - 2.88" CH	36P42A
KA-382 (2 brushes)	18" - 2.88" CH	36P42A
KA-3818 (2 brushes)	18" - 2.88" CH	36P42A
KE-20 (2 brushes)	10"	36P42A
KF-13DL, KF-13SL	11"	364192P
KF-17DL, KF-17SL	15"	364192P
KF-17SL2 (2 speed)	15"	364192P
KF-20DL, KF-20HD, KF-20SL	18"	364192P
KF-20SL2 (2 speed)	18"	364192P
K-130, KF-130	11"	364192P
KF-150A	13"	364192P
K-170, KF-170A, KF-174SL, KF-175A	15"	364192P
KF-175SA - high speed pad driver	15"	CALL*
KF-176SL2 (2 speed)	15"	364192P
KF-195, KF-195M	18"	364192P
KF-200A, KF-201, KF-204SL	18"	364192P
KF204SC	18"	CALL*
KF-205A, KF-206SL2 (2 speed)	18"	364192P
KF-205S2 (2 speed)	18"	364192P
M-13, MA-13	11"	364192P

Machine Manufacturer's Model No	Block Dia	Suggested Plate
Kent/Euroclean (cont.)		
M-15, XP-15	13"	364192P
M-17, MA-17, XP-17	15"	364192P
M-20, MA-20, XP-20	18"	364192P
M-23, MA-23, XP-23	21"	364192P
Razor 17	16"	364148P
Razor 20	19"	364148P
Razor Blade 26D (2 brushes)	13"	364148P
Razor Blade 28D (2 brushes)	14"	364148P
SD130	11"	364192P
Select Line 17, 17HD	15"	364192P
Select Line 20, 20HD, 20TS (2 speed)	18"	364192P
Koblentz		
TP-1710, TP-1715	15"	364192P
TP-2010, TP-2015	18"	364192P
Lawlor		
15W, 16, 151, 151W	14" - 6" CH	N/A
19, 20D, 181, 181W	17" - 6" CH	N/A
221, 221R	20" - 6" CH	N/A
C-12, C-13	11"	364192P
C-16, CF-16	14"	364192P
C-19, CF-19	17"	364192P
C-22, CF-22	20"	364192P
K-13, L-1300	12"	364192P
K-16, L-1600	14"	364192P
K-19, L-1900	17"	364192P
Mastercraft		
1300, 3300	11"	364192P
1550, 1575, 2550	13"	364192P
1700, 1775	15"	364192P
1900, 3990	17"	364192P
3550, 3575, 4550, 4575	13"	364192P
3700, 3775, 4775	15"	364192P
MBS-2000E - high speed pad driver	18"	CALL*
MD-13A	11"	364192P
MD-15B, MD-15C, MD-15D	13"	364192P
MD-17	15"	364192P
MD-20, MD-20D, MH-20E	18"	364192P
MD-21	19"	364192P
MD-24E	22"	364192P
MHS20E - high speed pad driver	18"	CALL*
Mercury		
BDP-13	11"	364192P
BDP-15, H-15, L-15	13"	364192P
BDP-17, H-17, HSP-17, L-17, TS-17	15"	364192P
DC-17, GM-17	16"	CALL*
BDP-19, H-19, HSP-19, L-19, TS-19	17"	364192P
DC-19, GM-19	17"	CALL*

CALL* – Call Customer Service at 800-654-8210 for brush types available in these special sizes.

WARNING: Do not use brushes, pads, or tools with flammable materials as serious bodily injury could result.

Machine Manufacturer's Model No	Block Dia	Suggested Plate
Mercury (cont.)		
H-21, HSP-21, L-21, TS-21	19"	364192P
DC-21, GM-21	20"	CALL*
L-23	21"	364192P
Timesaver 17	15"	364192P
National Super Service		
21 (2 brushes)	10"	N/A
24B	12"	N/A
Champ ZS29, 2929 (2 brushes)	14" - 5.53" CH	36P74
Champ 3329 (2 brushes)	16" - 5.53" CH	36P74
Champ 3529 (2 brushes)	17" - 5.53" CH	36P74
Charger 20, Charger 1500 - high speed pad driver	18"	CALL*
Filly 13	11"	364192P
Galaxy 17	15"	364192P
Galaxy 20	18"	364192P
Maverick II - 15	13"	364192P
Maverick II - 17, Maverick 300-17	15"	364192P
Maverick II - 20, Maverick 300-20	18"	364192P
Maverick 300	18"	364192P
Mustang 17, Mustang 300-17	15"	364192P
Mustang 20, Mustang 300-20	18"	364192P
Portable 13 (old style)	11"	N/A
Portable 13-SP	11"	364192P
SS-13	11"	364192P
SP-15, SS-15	13"	364192P
SP-16, SS-16	14"	364192P
SP-17, SS-17	15"	364192P
SP-19, SS-19	17"	364192P
SP-20, SS-20	18"	364192P
Thoroughbred FP15	13"	364192P
Thoroughbred 17	15"	364192P
Thoroughbred 20	18"	364192P
Thoroughbred 23	21"	364192P
Wrangler 17	17"	CALL*
Wrangler 20	20"	CALL*
Wrangler 24 (2 brushes)	11" - 5.53" CH	36P74
Wrangler 26 (2 brushes)	12" - 5.53" CH	36P74
Wrangler 27, 2625DB (2 brushes)	13" - 5.53" CH	36P74
Wrangler 33, 3329 (2 brushes)	16" - 5.53" CH	36P74
Wrangler 1708C	17"	364192P
Wrangler 2008C	20"	364192P
Wrangler 2016DB	18"	364192P
Nilfisk-Advance (Advance)		
Adfinity 17ST	16"	364148P
Adfinity 20ST, 20, X20D, X20C, 20D	19"	364148P
Adfinity 24 (2 brushes)	11"	364148P
Adgressor 28 (2 brushes)	13" - 5.53" CH	36P74
Adgressor 32, 3220 (2 brushes)	15" - 5.53" CH	36P74

Machine Manufacturer's Model No	Block Dia	Suggested Plate
Nilfisk-Advance (Advance) (cont.)		
Adgressor 35, 3520 (3 brushes)	11" - 5.53" CH	36P74
Adgressor 38, 3820 (3 brushes)	12" - 5.53" CH	36P74
Advenger 2400D (2 brushes)	11" - 5.53" CH	36P74
Advenger 2600D (2 brushes)	12" - 5.53" CH	36P74
Advenger 2810D (2 brushes)	13" - 5.53" CH	36P74
Advenger 3210D (2 brushes)	15" - 5.53" CH	36P74
All Purpose Matador 17	15"	364147P
All Purpose Matador 20	18"	364147P
BA 5321, BA 5321D	19"	364148P
Captor 4300 (3 brushes)	14" - 5.53" CH	36P74
Captor 4800 (3 brushes)	16" - 5.53" CH	36P74
Captor 5400 (4 brushes)	13" - 5.53" CH	36P74
Converta Max 20	19"	364148P
Converta Max 26 (2 brushes)	12" - 5.53" CH	36P74
Converta Max 28 (2 brushes)	14" - 5.53" CH	36P74
Converta Max 34 (2 brushes)	16" - 5.53" CH	36P74
Convertamatic 17	15"	364147P
Convertamatic 18	16" - 5.53" CH	36P74
Convertamatic 20	18"	364147P
Convertamatic 21	19" - 5.53" CH	36P74
Convertamatic 24 (2 brushes)	11" - 5.53" CH	36P74
Convertamatic 26 (2 brushes)	12" - 5.53" CH	36P74
Convertamatic 28 (2 brushes)	14" - 5.53" CH	36P74
Convertamatic 32 (2 brushes)	16" - 5.53" CH	36P74
Convertamatic 38 (2 brushes)	19" - 5.53" CH	36P74
Convertamatic 200	18"	364147P
Convertamatic 240 (2 brushes)	11" - 5.53" CH	36P74
Convertamatic 260, 265 (2 brushes)	12" - 5.53" CH	36P74
Convertamatic 280, 285 (2 brushes)	14" - 5.53" CH	36P74
Convertamatic 320, 325 (2 brushes)	16" - 5.53" CH	36P74
Convertamatic 380, 385, 3800 (2 brushes)	19" - 5.53" CH	36P74
Galaxie 14 (new)	12" - 4.91" CH	N/A
Galaxie 16 (new)	14" - 4.91" CH	N/A
Galaxie 16, 160	14"	364147P
Galaxie 18 (new)	16" - 5" CH	N/A
Galaxie 18, 180	16"	364147P
Galaxie 20	18"	364147P
Hydro-Cat (2 brushes)	12" - 5.53" CH	36P74
Hydro-Cat 5015 (4 brushes)	12" - 5.53" CH	36P74
Hydro-Retriever 200	18"	364147P
Hydro-Retriever 240 (2 brushes)	11" - 5.53" CH	36P74
Hydro-Retriever 2800 (2 brushes)	14" - 5.53" CH	36P74
Hydro-Retriever 3200 (2 brushes)	16" - 5.53" CH	36P74
Hydro-Retriever 3800 (2 brushes)	19" - 5.53" CH	36P74
Lynx 285 (2 brushes)	14" - 5.53" CH	36P74
Lynx 325 (2 brushes)	16" - 5.53" CH	36P74
Lynx 385 (2 brushes)	19" - 5.53" CH	36P74

CALL* – Call Customer Service at 800-654-8210 for brush types available in these special sizes.

WARNING: Do not use brushes, pads, or tools with flammable materials as serious bodily injury could result.

MACHINE LISTINGS (CONT)

Machine Manufacturer's Model No	Block Dia	Suggested Plate
Nilfisk-Advance (Advance) (cont.)		
MP-20 HS	18"	364147P
Matador 17	15"	364147P
Matador 20	18"	364147P
Matador 24	22"	N/A
Micromatic 14E	12"	364192P
Micromatic 17B	15"	364192P
Except Scrub-Grit® II, Dyna-Scrub®, and pad driver	16"	364192P
Micromax 17B, 17E	16"	364148P
Micromax 20B, 20DD	19"	364148P
Mobilmatic 17	15"	364147P
Mobilmatic 20	18"	364147P
Mobilmatic 64, 6400 (4 brushes)	15" - 5.53" CH	36P74
Pacemaker 15	13"	364147P
Pacemaker 17	15"	364147P
Pacemaker 20, P20E	18"	364147P
Pacemaker 22	20"	364147P
Pacemaker 24	22"	N/A
Pacesetter 13	11"	364192P
Pacesetter 17, 17HD	15"	364192P
Pacesetter 20, 20HD, 20TS, 20SD	18"	364192P
SC750-26D (2 brushes)	12" - 5.53" CH	36P74
SC750-28D (2 brushes)	14" - 5.53" CH	36P74
SC800-34D, SC800 ST-34D (2 brushes)	16" - 5.53" CH	36P74
SC800-28D (2 brushes)	14" - 5.53" CH	36P74
SD 17, SD 4317	15"	364192P
SD 20, SD 5120	18"	364192P
SD130	11"	364192P
Shadow 17	15"	364192P
Shadow 20	18"	364192P
Spin 17	15"	364192P
Spin 20	18"	364192P
Trac 240 (2 brushes)	11" - 5.53" CH	36P74
Trac 280 (2 brushes)	14" - 5.53" CH	36P74
Trac 320 (2 brushes)	16" - 5.53" CH	36P74
Trac 380 (2 brushes)	19" - 5.53" CH	36P74
Warrior 28D (2 brushes)	13" - 5.53" CH	36P74
Warrior 32D (2 brushes)	15" - 5.53" CH	36P74
Warrior 34, 34RST (2 brushes)	17"	CALL*
Whirlamatic 200	18"	364147P
Whirlamatic 1100 - high speed pad driver	18"	CALL*
Nobles		
11	9"	364192P
21 (2 brushes)	10" - 4" CH	N/A
24 (2 brushes)	12" - 4" CH	N/A
32 (2 brushes)	15" - 4" CH	N/A
260 (2 brushes)	13"	CALL*
265XP (2 brushes)	12"	364109

Machine Manufacturer's Model No	Block Dia	Suggested Plate
Nobles (cont.)		
320 (2 brushes)	15"	CALL*
1125LT	9"	364192P
1400 Series	12"	364192P
2000 Series	18"	364192P
2300 Series	21"	364192P
5300	19"	CALL*
EZ Rider HP28 (2 brushes)	14"	364108
EZ Rider HP32 (2 brushes)	16"	364108
Speed Scrub 5-32, SS5-32 (2 brushes)	15.5"	CALL*
Speed Scrub 32, SS-32 (2 brushes)	15.5"	CALL*
Speedshine 2000-17	15"	364192P
SS-14, SPR-14	12"	364192P
SS-16, SPR-16	14"	364192P
SS-17, SPR-17	15"	364192P
SS-170, SS-1701, SS-1700	15" - 5.53" CH	36P74
SS-1701 Plus	15"	364115
SS-19, SPR-19	17"	364192P
SS-20, SPR-20, SS2000DS, Speedshine 2000-20	18"	364192P
SS-22, SPR-22	20"	364192P
SS-23, SPR-23	21"	364192P
SS-2000, SS-2001	19" - 5.53" CH	36P74
SS-2000DS	18"	364192P
SS-2400 (2 brushes)	11" - 5.53" CH	36P74
SS-2401 (2 brushes)	11" - 5.53" CH	36P74
SS-2601 (2 brushes)	12" - 5.53" CH	36P74
SS-2700 (2 brushes)	13" - 5.53" CH	36P74
SS-2701 (2 brushes)	13" - 5.53" CH	36P74
SS3-17	16"	364174
SS3-20	19"	364174
SS-3300 (2 brushes)	16" - 5.53" CH	36P74
SS-3301 (2 brushes)	16" - 5.53" CH	36P74
SS-5300	19"	CALL*
Tuff Scrub 3300 (2 brushes)	16" - 5.53" CH	36P74
North American/Nacecare		
TTB 665/200s (2 brushes)	12"	364101E
TT455s	20"	364101E
Twintec 345, TT-345	16"	364101E
TTB 455-100s (2 brushes)	11"	364101E
Pacific		
13, Satellite 13	11"	364192P
14	12"	364192P
15	13"	364192P
16, Satellite 16	14"	364192P
17	15"	364192P
19, 19A	17"	364192P
PS-20	18"	364192P
21	19"	364192P

CALL* – Call Customer Service at 800-654-8210 for brush types available in these special sizes.

WARNING: Do not use brushes, pads, or tools with flammable materials as serious bodily injury could result.

Machine Manufacturer's Model No	Block Dia	Suggested Plate
Pacific (cont.)		
22, P22G	20"	364192P
23, 23A	21"	364192P
24	22"	364192P
Fury 1500 DCP	13"	CALL*
Fury 2000 DCP	18"	CALL*
PCP-13	11"	364192P
PCP-15	13"	364192P
PCP-17	15"	364192P
PCP-20	18"	364192P
PCP-23	21"	364192P
PHS-17	15"	364192P
PHS-19	17"	364192P
PHS-20DC	18"	364192P
Searay 133	11"	364192P
Searay 175, 175DS	15"	364192P
Searay 205, 205DS	18"	364192P
Ponsell Atlas		
A-15	13" - 5" CH	N/A
CR-134	11"	N/A
CR-154, CR-155, CR156	13"	N/A
CR-175, CR-176, CR-177	15"	N/A
CR-196, CR197	17"	N/A
CR-206, CR-207	18"	N/A
CR-226, CR-227	20"	N/A
DS-14, E-15, G-15, H-15	13" - 5" CH	N/A
DS-16, I-16	14" - 5" CH	N/A
DS-19, I-19, O-19	17" - 5" CH	N/A
Q-11	9" - 2.13" CH	N/A
Q-12, Q-13	12" - 5" CH	N/A
Q-15, QS-15	13" - 5" CH	N/A
Q-16, QS-16	14" - 5" CH	N/A
Q-18	16" - 5" CH	N/A
Q-19	17" - 5" CH	N/A
V-16, VS-16	14" - 5" CH	N/A
V-19, VS-19	17" - 5" CH	N/A
V-22	20" - 5" CH	N/A
Powr-Flite		
C171, C171HD, C171SD, C172, M171-3, M171HD-3, M172-3	15"	364192P
C201, C201HD, C202, M201-3, M201HD-3, M202-3	18"	364192P
P131-3	11"	364192P
Pullman-Holt (Holt)		
50	14"	364192P
2S-16	14" - 5" CH	N/A
2S-17	15" - 5" CH	N/A
2S-20	18" - 5" CH	N/A
2S-23	21" - 5" CH	N/A

Machine Manufacturer's Model No	Block Dia	Suggested Plate
Pullman-Holt (Holt) (cont.)		
A-12	9" - 5" CH	N/A
A-14	12" - 5" CH	N/A
A-16	14" - 5" CH	N/A
B-13D	11"	364192P
B-14D	12"	364192P
B-16 Series	14"	364192P
B-18 Series	16"	364192P
B-20 Series	18"	364192P
B-22F	20"	364192P
C-12	9"	364192P
C-16D, C-16E	14"	364192P
C-18D	16"	364192P
C-20 Series	18"	364192P
C-22F	20"	364192P
C-24F	22"	364192P
CD-12	9" - 5" CH	N/A
CD-14	12" - 5" CH	N/A
CD-16	14" - 5" CH	N/A
CH-11	9"	364192P
D-18F	16"	364192P
ES2000	18"	364192P
Expert-13	11"	364192P
Expert-16	14"	364192P
Expert-18	16"	364192P
Expert-20	17"	364192P
Expert-22	20"	364192P
Gloss Boss 1090, 1500, 2000 - high speed pad driver	18"	CALL*
Heavy-Duty 15	13" - 4.25" CH	N/A
HS18F	16"	364192P
HST-20 (2 brushes)	9"	364192P
J-12A	9"	364192P
JW-12	10"	364192P
JW-13	11"	364192P
JW-16	14"	364192P
JW-18	16"	364192P
JW-20	17"	364192P
JW-22	20"	364192P
Jubilee 12	9" - 5" CH	N/A
M-13-1/2	11"	364183P
M-15-1/2	13"	364183P
M-16E, M-16F	14"	364192P
M-17	15"	364183P
M-20 Series	18"	364192P
M-23	21"	364183P
P-12B, P-12C	10"	364192P
P-12-1/2	11"	364192P
P-13B, P-13C	11"	364192P

CALL* – Call Customer Service at 800-654-8210 for brush types available in these special sizes.

WARNING: Do not use brushes, pads, or tools with flammable materials as serious bodily injury could result.

MACHINE LISTINGS (CONT)

Machine Manufacturer's Model No	Block Dia	Suggested Plate
Pullman-Holt (Holt) (cont.)		
P-14, PC-14, PR-14	12"	364192P
P-16, PC-16, PR-16, PX-16	14"	364192P
P-18, PC-18, PR-18	16"	364192P
P-20 Series, PES-2000	18"	364192P
P-22 Series	20"	364192P
P-24 Series	22"	364192P
S-17 Series	15"	364192P
S-20 Series	18"	364192P
Scrub Boss SB26 (2 brushes)	12" - 5.13" CH	N/A
Scrub Boss SB32 (2 brushes)	15" - 5.13" CH	N/A
Single 13	11"	364192P
Single 14	12"	364192P
Single 16	14"	364192P
Single 18, Single 19	16"	364192P
Single 20	17"	364192P
Single 22	20"	364192P
Single 24	21"	364192P
Special 12	10"	364192P
Special 16	14"	364192P
Special 20E	18"	364192P
Super 12	9"	364192P
Super 16	14"	364192P
RPS (Factory Cat/Tomcat)		
See Factory Cat/Tomcat on page 156.		
Standardized Sanitation Systems (Sss)		
15	13"	364192P
16	14"	364192P
17, 17VS, 17HS	15"	364192P
19, 19A	17"	364192P
21, 21VS, 20HS	19"	364192P
23, 23A	21"	364192P
Star		
Hydrodyne 33 sectional (8 per set)		—
Hydrodyne 46 sectional (12 per set)		—
Hydrodyne 60, SS60 sectional (16 per set)		—
Taski		
Hi-Speed	15"	CALL*
Combimat 55 (2 brushes)	11" - 4" CH	N/A
Except Scrub-Grit® II & Dyna-Scrub®	12" - 4" CH	N/A
Combimat 85 (2 brushes)	16" - 4" CH	N/A
Except Scrub-Grit® II & Dyna-Scrub®	17" - 4" CH	N/A
1000E	19" - 4" CH	N/A
Combimat 1500 (2 brushes)	11"	CALL*
Combimat 1700 (2 brushes)	14"	CALL*
Combimat 1900 (2 brushes)	17"	CALL*
Tennant (Tennant Trend)		
320 (2 brushes)	15"/15.25"	CALL*

Machine Manufacturer's Model No	Block Dia	Suggested Plate
Tennant (Tennant Trend) (cont.)		
426 (2 brushes)	12" - 4.36" CH	N/A
432 (2 brushes)	16" - 5.5" CH	N/A
465, 1465 (2 brushes)	12"	364108
480, 1480 (2 brushes)	16"	364108
490, 1490 (2 brushes)	18"	364108
510E, 515, 7300, 8010, 8200, 8210, 8300, Max Pro 1000 (2 brushes)	20"	364108
515, 7300, 7400, 8010, 8200, 8210, 8300, Max Pro 1200 (3 brushes)	16"	364108
528, 530	12.5"	364108
2000	15"	364192P
2030-17	15"	364192P
2030-20	18"	364192P
2040	18"	364192P
2100	11"	364192P
2100-17	15"	364192P
2100-20	18"	364192P
2120, 2140, 2160	15"	364192P
2130, 2150, 2170	18"	36P3A
2270-17	15"	364192P
2270-20	18"	364192P
5100	15"	364115
5200	19" - 5.53" CH	36P74
5280, 5300	19" - 5.53" CH	CALL*
5400-24D (2 brushes)	11" - 5.53" CH	364109
5400-26D (2 brushes)	12.5" - 5.53" CH	364109
Except pad driver	12" - 5.53" CH	364109
5500 (2 brushes)	11" - 5.53" CH	36P74
5520 (2 brushes)	12" - 5.53" CH	36P74
5540 (2 brushes)	13" - 5.53" CH	36P74
5560 (2 brushes)	16" - 5.53" CH	36P74
5680-700D, 5700-700D, 7100-28D, 7200 Tight Aisle (2 brushes)	14"	364108
5680-800D, 5700-800D, 7100-32D (2 brushes)	16"	364108
5680-900D, 5700-900D, 7200D (2 brushes)	18"	364108
7080-28 (2 brushes)	14"	364108
7080-32 (2 brushes)	16"	364108
8400, 8410, Max Pro 1200 (3 brushes)	16"	364108
BA-2000	19" - 5.53" CH	36P74
EZ Rider-28 (2 brushes)	14"	364108
EZ Rider-32 (2 brushes)	16"	364108
F5-17, F10-17	15"	364192P
F5-20, F10-20	18"	364192P
FM-17-SS	15"	364192P
FM-20-SS, FM-20-DS	18"	364192P
FS-2000	19" - 5.53" CH	36P74
Powerline 17	15"	CALL*
Powerline 20	18"	CALL*

CALL* – Call Customer Service at 800-654-8210 for brush types available in these special sizes.

WARNING: Do not use brushes, pads, or tools with flammable materials as serious bodily injury could result.

Machine Manufacturer's Model No	Block Dia	Suggested Plate
Tennant (Tennant Trend) (cont.)		
Power Trend 15	14"	364192P
Power Trend 17	16"	364192P
Power Trend 20	19"	364192P
S250 (2 brushes)	12"	36P74
Speed Scrub 1701 Plus	15"	364115
Servomatic 17	15" - 4.94" CH	N/A
Servomatic 26, 261 (2 brushes) Except Scrub-Grit® II & Dyna-Scrub®	12" - 4.36" CH	N/A
Servomatic 32 (2 brushes)	15" - 4.36" CH	N/A
T3-17	16"	364174
T3-20	19"	364174
T15 (2 brushes)	18"	364108
T16 (2 brushes)	18"	364108
T20 (3 brushes)	14"	364108
Viking 15	14"	N/A
Tennant Trend (Tennant)		
See Tennant (Tennant Trend) listing on pages 162-163.		
Thoro-Matic		
SE 15	13"	364192P
SE 17	15"	364192P
SE 20	18"	364192P
SE 22	20"	364192P
TM 12	10" - 3.78" CH	N/A
TM 13	11"	364192P
TM 15	13"	364192P
TM 17, TM 17-TS	15"	364192P
TM 20, TM 20 TS (2 speed)	18"	364192P
TM 22	20"	364192P
TM 300-17	15"	364192P
TM 300-20 (2 speed)	18"	364192P
Tornado (Breuer)		
15	13"	364192P
17	15"	364192P
19	17"	364192P
20-1	18"	364192P
22	20"	364192P
73 Series	12" - 5" CH	N/A
75 Series	14" - 5" CH	N/A
77 Series	16" - 5" CH	N/A
94 Series	12"	364192P
96, 97	14"	364192P
98	16"	364192P
130, 131, 132	11" - 4" CH	N/A
280-15, 283-15	13"	364192P
280-17, 283-17	15"	364192P
280-19, 283-19	17"	364192P
280-22, 283-22	20"	364192P
940 Series, 941	12"	364192P

Machine Manufacturer's Model No	Block Dia	Suggested Plate
Tornado (Breuer) (cont.)		
960, 961, 962	14"	364192P
980, 981	16"	364192P
990	20"	364192P
6200, 6300	10" - 5" CH	N/A
6400, 6500	12" - 5" CH	N/A
6600, 6700	14" - 5" CH	N/A
6800, 6900	16" - 5" CH	N/A
95625 (21" Auto-Mite)	19" - 4.63" CH	N/A
95678/95679 (16" Auto-Mite)	14" - 4.63" CH	N/A
97580 (M17-175)	15"	364192P
97585 (M20-175)	18"	364192P
97800 (16" Series I)	14"	364192P
97805 (18" Series I)	16"	364192P
97810 (20" Series I)	18"	364192P
97820 (14" Series I)	12"	364192P
98405 (17" Series II)	15"	364192P
98410 (19" Series II)	17"	364192P
98415 (22" Series II)	20"	364192P
98440 (Glazer 700/1500)	18"	CALL*
98441 (Glazer 1100, 1600)	18"	CALL*
98445 (Glazer 1100, 1400)	18"	CALL*
98457 (Glazer 1500)	18"	CALL*
98470 (16" Bi-Speed)	14"	364192P
98473 (17" Bi-Speed)	15"	364192P
98480 (20" Bi-Speed)	18"	364192P
98653 (Tri-Drive 1017)	15"	364192P
98656 (Tri-Drive 1020)	18"	364192P
98663 (Tri-Drive 1517)	15"	364192P
98666 (Tri-Drive 1520)	18"	364192P
98672 (17" ES Deluxe)	15"	364192P
98673 (ES8673 - 17" Deluxe)	15"	364192P
98674 (20" ES Deluxe)	18"	364192P
98675 (ES8675 - 20" Deluxe)	18"	364192P
98677 (1517SSM)	15"	364192P
98682 (ES8682 - 17" Standard)	15"	364192P
98683 (ES8683 - 17" Standard)	15"	364192P
98684 (ES8684 - 20" Standard)	18"	364192P
98685 (ES8685 - 20" Standard)	18"	364192P
99125 (EZ-20 Floorkeeper)	19"	364192P
99130 (EZ-24 Floorkeeper)	22"	364192P
99300 (Floorkeeper 3800) (2 brushes)	11"/12"	CALL*
99307 (26" Floorkeeper) (2 brushes)	14"	CALL*
99321 (24" Floorkeeper) (2 brushes)	12"/13"	CALL*
99351 (28" Floorkeeper) (2 brushes)	14"/15"	CALL*
99407 (33" Mid-Range Floorkeeper) (2 brushes)	16"/16.5"	CALL*
99421 (32" Long-Range Floorkeeper) (2 brushes)	16"	CALL*

CALL* – Call Customer Service at 800-654-8210 for brush types available in these special sizes.

WARNING: Do not use brushes, pads, or tools with flammable materials as serious bodily injury could result.

MACHINE LISTINGS (CONT)

Machine Manufacturer's Model No	Block Dia	Suggested Plate
Tornado (Breuer) (cont.)		
99430 (30" Floorkeeper) (2 brushes)	16"	CALL*
99450, 99451 (36" Long-Range Floorkeeper) (2 brushes)	18"	CALL*
Champion	10" - 5.25" CH	N/A
Cyclone 14-1/2	12"	364192P
Cyclone 16-1	14"	364192P
Cyclone 18-1	16"	364192P
Jumbo	14" - 6.13" CH	N/A
Majestic	18" - 6.13" CH	N/A
Royal	12" - 5.25" CH	N/A
Standard	16" - 6.13" CH	N/A
United (Unico)		
112, 112B, 112C	10"	364192P
CSU-12B	10"	364192P
CSU-13	11"	364192P
CSU-14	12"	364192P
CSU-15	13"	364192P
CSU-16	14"	364192P
CSU-17	15"	364192P
CSU-20	18"	364192P
CSU-112	10"	364192P
P60-15	13"	364192P
P60-17	15"	364192P
P60-20	18"	364192P
S-12 Aero	10"	364192P
SBU-13	11"	364192P
SBU-14	12"	364192P
SBU-15, S60-16	13"	364192P
SBU-16	14"	364192P
SBU-17, S60-17	15"	364192P
SBU-20, S60-20	18"	364192P
SBU-20SS - high speed pad driver	18"	CALL*
SBU-24	22"	364192P
Viper		
DR17125, DR17175	15"	364192P
DR20125, DR20175	18"	364192P
Fang 18	17"	CALL*
Fang 20/20T	18" - 5.53" CH	36P74
Fang 24T (2 brushes)	11" - 5.53" CH	36P74
Fang 26T (2 brushes)	12" - 5.53" CH	36P74
Fang 28T (2 brushes)	13" - 5.53" CH	36P74
*VN1720P - 17", VN1700, VN1715	15"	364192P
*VN1720P - 20"	18"	364192P
VN2015, VN20DS	18"	364192P
* Model VN1720P is sold by the manufacturer with both a 17" and 20" deck.		

Machine Manufacturer's Model No	Block Dia	Suggested Plate
Windsor		
Lightning 175-17	15"	364183P
Lightning 175-20	18"	364183P
Merit 175-17 (MD-17)	15"	364183P
Merit 175-20 (MD-20)	18"	364183P
Merit MP13	11"	364192P
Merit MP15	13"	364192P
Merit MP17X, Storm 17	15"	364192P
Merit MP20X, Storm 20	18"	364192P
PowerTec 17	16"	CALL*
PowerTec 20	18"	CALL*
PowerTec 24	21"	CALL*
PowerTec 26 (2 brushes)	13"	CALL*
PowerTec 28 (2 brushes)	14"	CALL*
PowerTec 32 (2 brushes)	16"	CALL*
PowerTec 34 (2 brushes)	17"	CALL*
Quick 32 (2 brushes)	15"	CALL*
Saber 24 (2 brushes)	11"	CALL*
Saber 26 (2 brushes)	12"	CALL*
Saber 28 (2 brushes)	13"	364112
Saber Cutter 26 (2 brushes)	12"	CALL*
Saber Glide 28 (2 brushes)	13"	364112
Saber Glide 28/36 (3 brushes)	11"	364112
Saber Glide 32, Saber Cutter 32 (2 brushes)	15"	364112
Saber 34 (2 brushes)	16"	CALL*
Saber Compact 17	17"	CALL*
Saber Compact 20	19"	364112
Storm 17	15"	364192P
Storm 20	18"	364192P
Tracker AS34 (2 brushes)	17"	CALL*
Trident Compact 17	16"	CALL*
Trident Compact 20	19"	CALL*
Trident TR28 (2 brushes)	14"	CALL*
Trident TR34 (2 brushes)	17"	CALL*
* Fits new machines with star style plates only. Old style hex shaped plate not available from Flo-Pac.		

CALL* – Call Customer Service at 800-654-8210 for brush types available in these special sizes.

WARNING: Do not use brushes, pads, or tools with flammable materials as serious bodily injury could result.