

# ICOM

## INSTRUCTIONS

### CLONING SOFTWARE

# CS-F3160/F5060

## ■ Getting started

- ◇ This cloning software is designed to perform data setting and cloning for the IC-F3160/F4160 series VHF/UHF HANDHELD TRANSCEIVERS, or IC-F5060/F6060 series VHF/UHF MOBILE TRANSCEIVERS.
- ◇ **HELP WINDOW:** CS-F3160/F5060 has a help window to describe functions and operation.

## ■ System requirement

To use this program, the following hardware and software are required:

### PC

- Microsoft® Windows® 98SE/Me/2000/XP is installed
- With RS-232C serial port (D-sub 9-pin) or USB port

### Other item

- For IC-F3160/F4160 series  
Optional OPC-966 CLONING CABLE (RS-232C type) or OPC-966U CLONING CABLE (USB type)
- For IC-F5060/F6060 series  
Optional OPC-1122 CLONING CABLE (RS-232C type) or OPC-1122U CLONING CABLE (USB type)

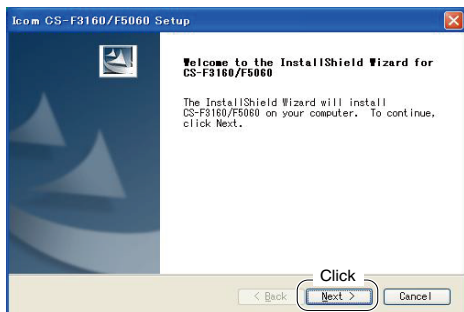
### NOTE:

When using the OPC-966U/1122U, USB type cloning cable, USB driver installation is necessary. The driver is supplied with the OPC-966U/1122U. See the OPC-966U/1122U instruction manual for the installation details.

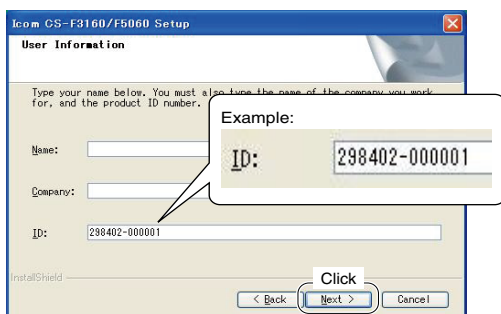
## ■ Software installation

When installing into a Windows XP or Windows 2000 environment, log in as the **administrator**.

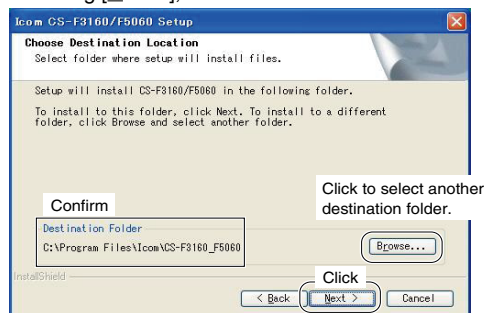
- ① Quit all applications when Windows is running.
- ② Insert the CD into the appropriate CD drive.
- ③ Double-click the “Setup.exe” contained in the CD.
- ④ The “Welcome to the InstallShield Wizard for CS-F3160/F5060” will appear as below. Click [Next>].



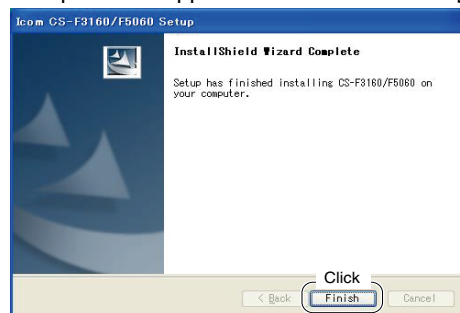
- ⑤ The “User Information” will appear as below, then type your name, your company name and the product ID number with the following manner. Then click [Next >].
  - ID number: 298402-(6 digit serial number)
  - e.g. the serial number on the CD is 000001, enter “298402-000001” as the ID number.



- ⑥ The “Choose Destination Location” will appear as below. Then click [Next>] to install the software to the destination folder. (e.g. C:\Program Files\Icom\CS-F3160\_F5060)
  - Click [Browse...] to select another destination folder before clicking [Next >], if desired.



- ⑦ After the installation is completed, the “InstallShield Wizard Complete” will appear as below. Then click [Finish].



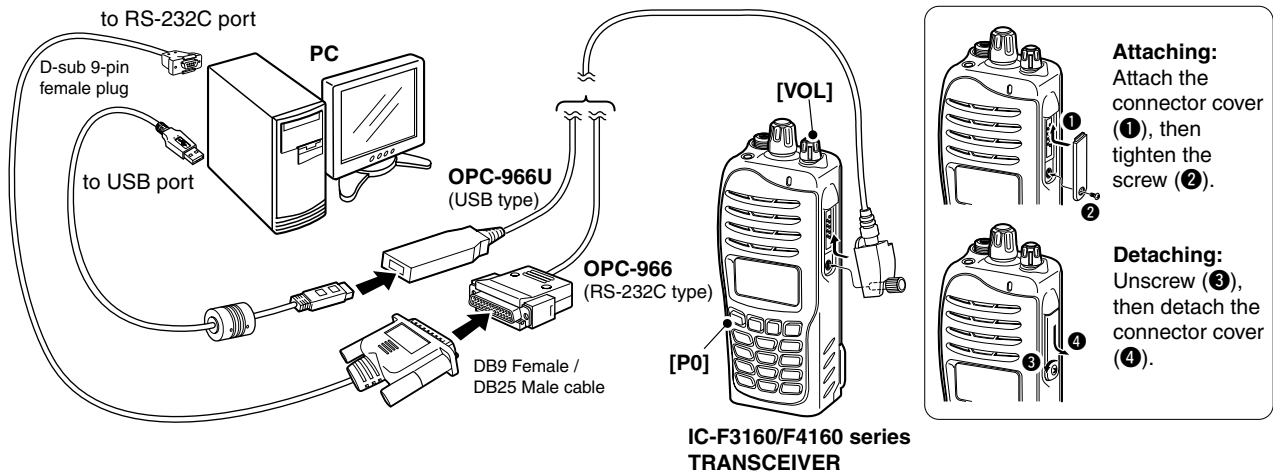
- ⑧ Eject the CD.
- ⑨ Program group ‘CS-F3160\_F5060’ appears in the ‘Programs’ folder of the start menu, and ‘CS-F3160\_F5060’ short cut icon appears on the desktop screen.
  - To uninstall the cloning software, select the “Control Panel” in the start menu, and click the “Add or Remove Programs.” Then, select the program group ‘Icom CS-F3160/F5060’ and click [Remove].

## ■ Connections

All cloning operations are performed from the computer's keyboard—the operation required on the transceiver side is;

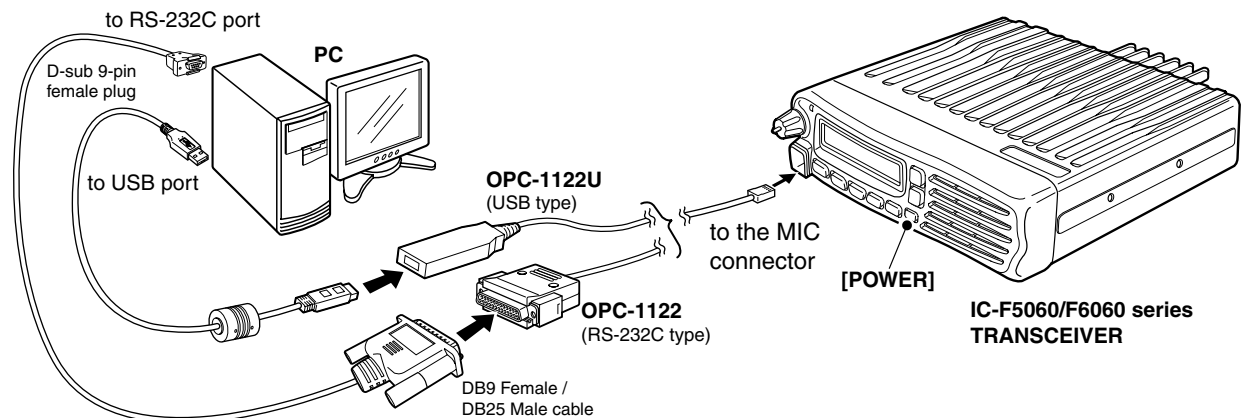
### For IC-F3160/F4160 series

- ① First, connect the cloning cable as illustrated below.
- ② While pushing and holding [P0], rotate [VOL] to turn power ON.



### For IC-F5060/F6060 series

- ① First, connect the cloning cable as illustrated below.
- ② And then push [POWER] to turn power ON.



## ■ Programming information

- We recommend that you should read out all the transceiver's data before start entering/editing parameters even when the transceiver is factory fresh.
- Select the model type which you are going to clone from LMR (Land Mobile Radio) and PMR (Private Mobile Radio).
- Double click the desired cell in the contents list screen directory, or rightclick the cell to display the edit menu. Then click [Edit... Enter] to select and change the setting depends on the item.
- Click [Help] to display the help screen for the item.

Edit...	Enter
Copy	Ctrl+C
Paste	Ctrl+V
Up	Ctrl+Up
Down	Ctrl+Down
Clear	
Delete	Del
Insert	Ins
Help	

(Edit menu)

**NOTE:** The left instructions are for reference only. Please refer to the HELP file of the cloning software when you don't understand the function or setting meaning.

Icom, Icom Inc. and the ICOM logo are registered trademarks of Icom Incorporated (Japan) in the United States, the United Kingdom, Germany, France, Spain, Russia and/or other countries. Microsoft and Windows are registered trademarks of Microsoft Corporation in the United States and/or other countries. All other products or brands are registered trademarks or trademarks of their respective holders.