

Desoutter



Industrial Tools



CVIC II Controllers

Current control technology

- *Exceptional value and quality from an industry leading benchmark*

More Than Productivity

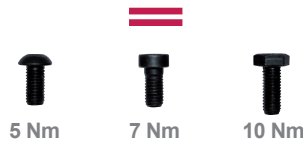


CVIC II - Innovate your assembly process...

Exceptional value and quality

MULTI TORQUE CAPABILITY

Replace multiple pneumatic tools with one electric tool per station.



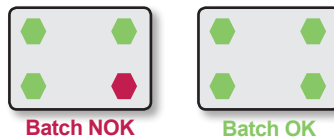
OPTIMIZE YOUR FASTENING PROCESS

Fine tune your process with up to 15 phases for any assembly needs.



FASTENING QUALITY GUARANTEED IN ALL YOUR PRODUCTS

Set up a batch count to ensure all bolts are tightened with correct strategy.

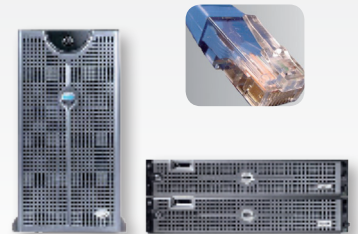
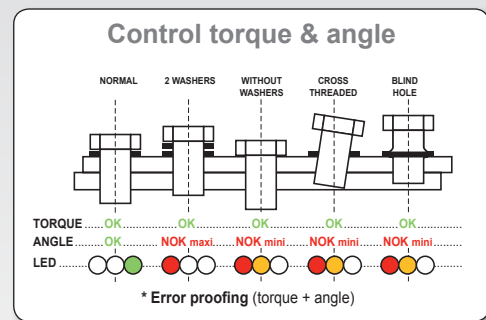


RECORD ALL YOUR RESULTS

Up to 2,000 results stored in the controller, with the option to transfer to your local database via ethernet.



Auto learning of the process
Speed up set up times using the Auto learning process. Provides automatic set up for the tool to optimize the application on any joint.



Advanced ergonomics

A SMOOTH FLOWING DESIGN

The small compact size allows you to mount the controller anywhere in your assembly line.



GET RID OF THE REACTION FORCE

The ergostop function reduces risks of injuries for your operators by virtually eliminating all reaction forces.

DON'T LOOSE TIME VERIFYING YOUR FASTENING PROCESS

Benefit from direct feedback on the controller and directly on the tool.

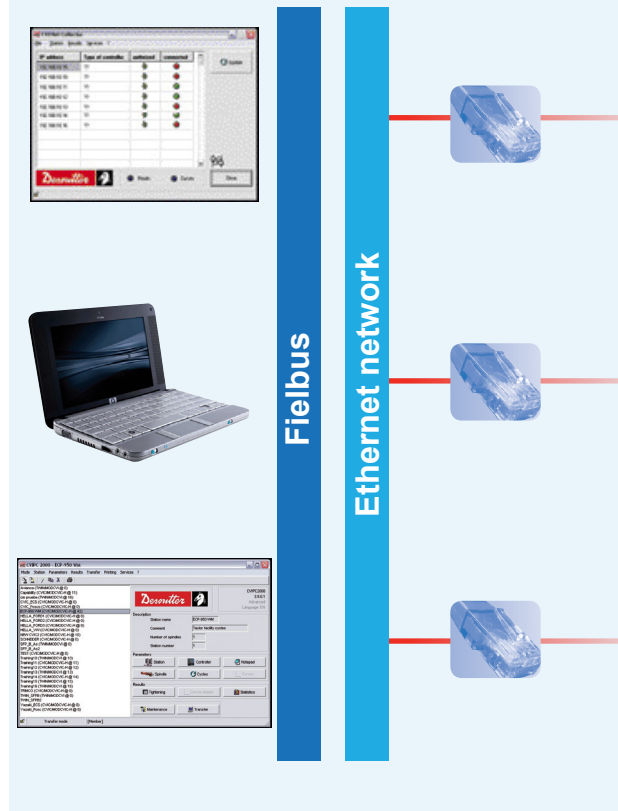


and improve quality throughout all applications

Flawless integration

OPEN TO YOUR NETWORK NEEDS

Communicate easily with your local line protocol.



OPEN TO PERIPHERALS

Connect accessories to optimize your fastening process.



MODEL	PART NUMBER	TOOLS	CONSUMPTION (current)		MAINS SUPPLY	WIDTH		DIMENSIONS HEIGHT		DEPTH		WEIGHT	
			115 V	230 V		50/60 hertz	mm	in.	mm	in.	mm	in.	kg

CVIC II CONTROLLERS (Literature included)

MODEL	PART NUMBER	TOOLS	CONSUMPTION (current)	MAINS SUPPLY	WIDTH	DIMENSIONS HEIGHT	DEPTH	WEIGHT
CVICII-L2	615 932 676 0	ECS / ECPL(T) / ECD5 / MC35-10 / ECA15	4A 2A	Single-phase	130	5.1 278	10.9 291	11.5 5 11
CVICII-H2	615 932 677 0	ECS / ECPL(T) / ECD5 / MC35-10 / ECA15	4A 2A	100 to 250 V	130	5.1 278	10.9 291	11.5 5 11
CVICII-L4	615 932 678 0	Other tools	8A 4A	Single-phase	130	5.1 278	10.9 291	11.5 5 11
CVICII-H4	615 932 679 0	Other tools	8A 4A	100 to 250 V	130	5.1 278	10.9 291	11.5 5 11

Protocols

MODEL	PART NO.
Ethernet IP Module	615 927 594 0
Profibus Module	615 927 595 0



Power cord to be ordered with the controller

PLUG	DESCRIPTION	PART NO.
A	European	615 917 201 0
B	UK	615 917 202 0



OPTIONAL ACCESSORIES

OPTIONAL ACCESSORIES	PART NO.
CVIPC2000 for CVICS/CVIC 1 installation	615 927 521 0
CVIPC2000 for CVICS/CVIC 5 installations	615 927 534 0
PC cable length 2 m (78.7")	615 917 047 0
37 pin D-Sub female I/O adaptor	615 919 003 0
Shelf support - Aluminium profile	615 397 403 5

Current control technology for any application

From 0.12 to 4000 Nm



ECS (-M20)
0.12-16 Nm



ECSF
0.12-16 Nm

ECSA
0.55-11.5 Nm



ECP low torque
1-40 Nm



ECP high torque
60-4000 Nm



ECA
5-200 Nm



ECD
2-120 Nm



MC
2.5-1350 Nm



MCL
15-550 Nm



More Than Productivity