

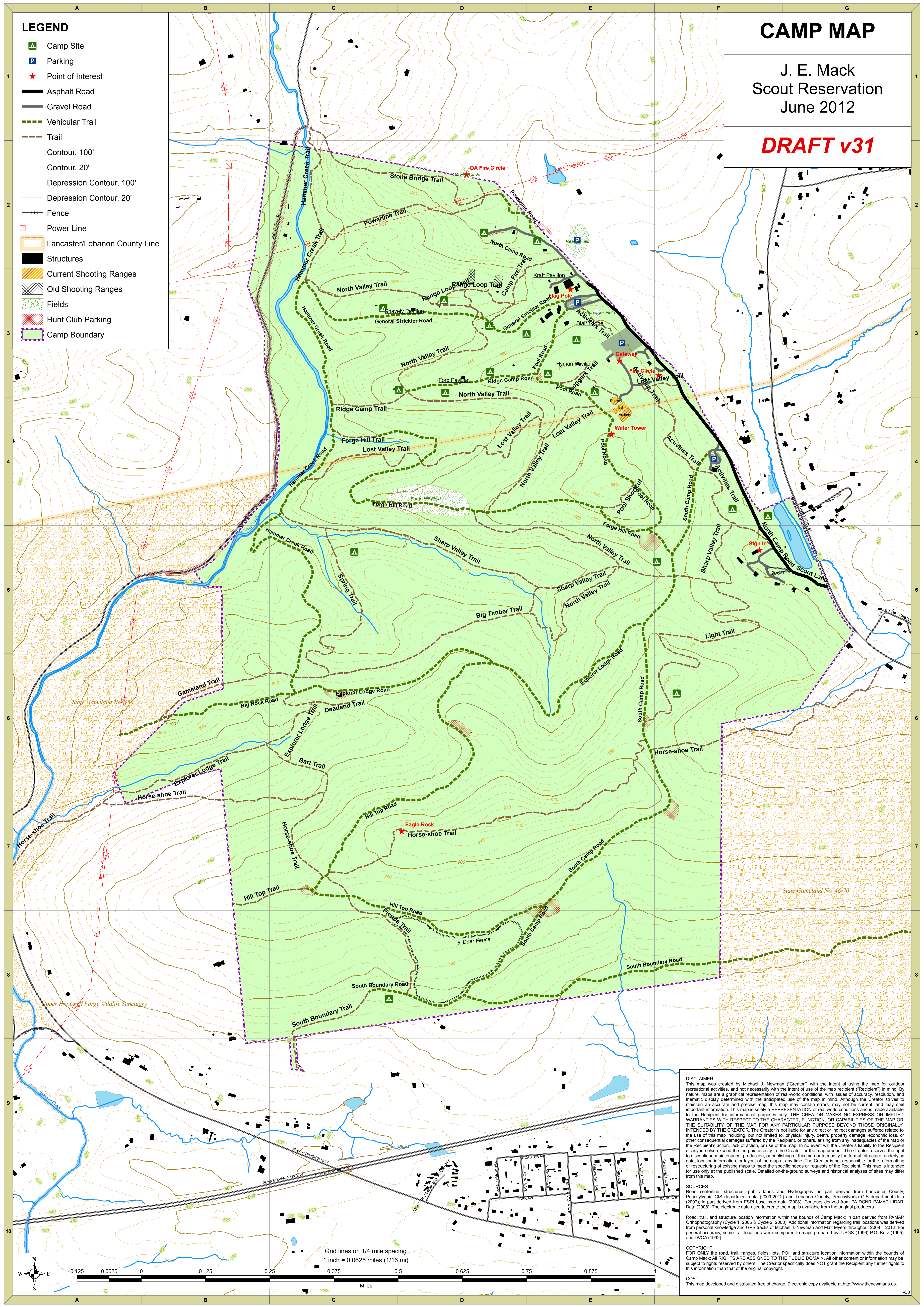
CAMP MAP

J. E. Mack
Scout Reservation
June 2012

DRAFT v31

LEGEND

- Camp Site
- Parking
- Point of Interest
- Asphalt Road
- Gravel Road
- Vehicular Trail
- Trail
- Contour, 100'
- Contour, 20'
- Depression Contour, 100'
- Depression Contour, 20'
- Fence
- Power Line
- Lancaster/Lebanon County Line
- Structures
- Current Shooting Ranges
- Old Shooting Ranges
- Fields
- Hunt Club Parking
- Camp Boundary



Grid lines on 1/4 mile spacing
1 inch = 0.0625 miles (1/16 mi)

DISCLAIMER
This map was created by Michael J. Newman ("Creator") with the intent of using the map for outdoor recreational activities, and not necessarily with the intent of use of the map recipient ("Recipient") in mind. By nature, maps are a graphical representation of real-world conditions, with issues of accuracy, resolution, and thematic display determined with the anticipated use of the map in mind. Although the Creator strives to maintain an accurate and precise map, this map may contain errors, may not be current, and may omit important information. This map is solely a REPRESENTATION of real-world conditions and is made available to the Recipient for informational purposes only. THE CREATOR MAKES NO EXPRESS OR IMPLIED WARRANTIES WITH RESPECT TO THE CHARACTER, FUNCTION, OR CAPABILITIES OF THE MAP OR THE SUITABILITY OF THE MAP FOR ANY PARTICULAR PURPOSE BEYOND THOSE ORIGINALLY INTENDED BY THE CREATOR. The Creator is not liable for any direct or indirect damages suffered related to the use of this map including, but not limited to, physical injury, death, property damage, economic loss, or other consequential damages suffered by the Recipient, or others, arising from any inadequacies of the map or the Recipient's action, lack of action, or use of the map. In no event will the Creator's liability to the Recipient or anyone else exceed the fee paid directly to the Creator for the map product. The Creator reserves the right to discontinue maintenance, production, or publishing of this map or to modify the format, structure, underlying data, location information, or layout of the map at any time. The Creator is not responsible for the reformatting or restructuring of existing maps to meet the specific needs or requests of the Recipient. This map is intended for use only at the published scale. Detailed on-the-ground surveys and historical analyses of sites may differ from this map.

SOURCES
Road centerline, structures, public lands and Hydrography; in part derived from Lancaster County, Pennsylvania GIS department data (2009-2012) and Lebanon County, Pennsylvania GIS department data (2007); in part derived from ESRI base map data (2008). Contours derived from PA DNR PAMAP LIDAR Data (2008). The electronic data used to create the map is available from the original producers.

Road, trail, and structure location information within the bounds of Camp Mack; in part derived from PAMAP Orthophotography (Cycle 1, 2005 & Cycle 2, 2008). Additional information regarding trail locations was derived from personal knowledge and GPS tracks of Michael J. Newman and Matt Myers throughout 2008 - 2012. For general accuracy, some trail locations were compared to maps prepared by: USGS (1996) P.G. Kutz (1995) and DVOA (1992).

COPYRIGHT
FOR ONLY the road, trail, ranges, fields, lots, POI, and structure location information within the bounds of Camp Mack. All RIGHTS ARE ASSIGNED TO THE PUBLIC DOMAIN. All other content or information may be subject to rights reserved by others. The Creator specifically does NOT grant the Recipient any further rights to this information than that of the original copyright.

COST
This map developed and distributed free of charge. Electronic copy available at <http://www.thenewmans.us>.