

SPECIFICATIONS

1. PICTURE TUBE

- Size : 17 inch (Flat Square Tube)
- Deflection Angle : 90°
- Neck Diameter : 29.1mm
- Transmission : 46%
- Dot Pitch : 0.28mm
- Face Treatment : AR-ASC (Anti-Reflection and Anti-Static Coating)
- Low Radiation : MPR-II, TCO-95

2. SIGNAL

- 2-1. Horizontal & Vertical Sync
 - 1) Input Voltage Level : Low=0~1.2V, High=2.5~5.5V
 - 2) Sync Polarity : Positive or Negative
- 2-2. Video Input Signal
 - 1) Voltage Level : 0 ~ 0.7 Vp-p
 - a) Color 0, 0 : 0 Vp-p
 - b) Color 7, 0 : 0.467 Vp-p
 - c) Color 15, 0 : 0.7 Vp-p
 - 2) Input Impedance : 75 Ω
 - 3) Video Color : R, G, B Analog
 - 4) Signal Format : Refer to the Timing Chart
- 2-3. Signal Connector
 - 15-pin D-Sub Connector
- 2-4. Scanning Frequency
 - Horizontal : 30 ~ 70kHz
 - Vertical : 50 ~ 160Hz

3. POWER SUPPLY

- 3-1. Power Range
 - AC 100~264V (Free Voltage), 50/60Hz, 2.0A Max.

3-2. Power Consumption

MODE	H/V SYNC	POWER CONSUMPTION	LED COLOR
NORMAL (ON)	ON/ON	less than 105 W	GREEN
STAND-BY	OFF/ON	less than 15 W	ORANGE
SUSPEND	ON/OFF	less than 15 W	
OFF	OFF/OFF	less than 15 W	ORANGE
FAULT	OUT OF RANGE	less than 5 W	ORANGE

4. DISPLAY AREA

- 4-1. Active Video Area : 310 x 230 mm (12.20" x 9.06")
(Available for Full Screen)
- 4-2. Display Color : Full Colors
- 4-3. Display Resolution : 1280 x 1024 / 60Hz
(Non-Interlace)
- 4-4. Video Bandwidth : 110MHz

5. ENVIRONMENT

- 5-1. Operating Temperature: 15°C ~ 30°C (59°F ~ 86°F)
(Ambient)
- 5-2. Relative Humidity : 8%~ 80%
(Non-condensing)
- 5-3. Altitude : 5,000m

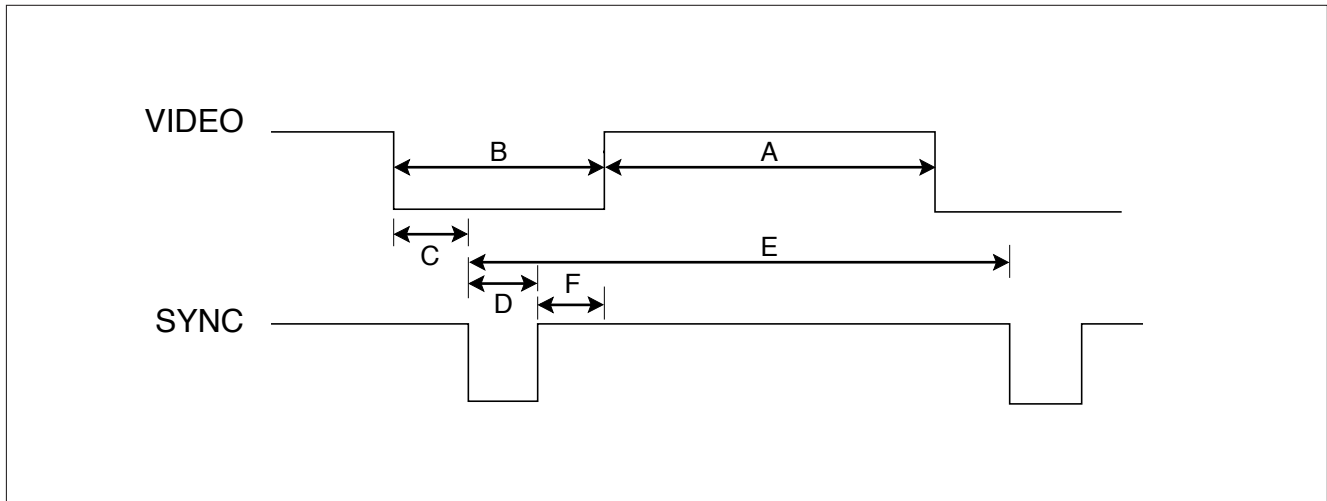
6. DIMENSIONS (with TILT/SWIVEL)

- Width : 512mm (20.16 inch)
- Depth : 545mm (21.46 inch)
- Height : 525mm (20.67 inch)

7. WEIGHT (with TILT/SWIVEL)

- Net Weight : 15.90kg (35.06 lbs.)
- Gross Weight : 19.00kg (41.89 lbs.)

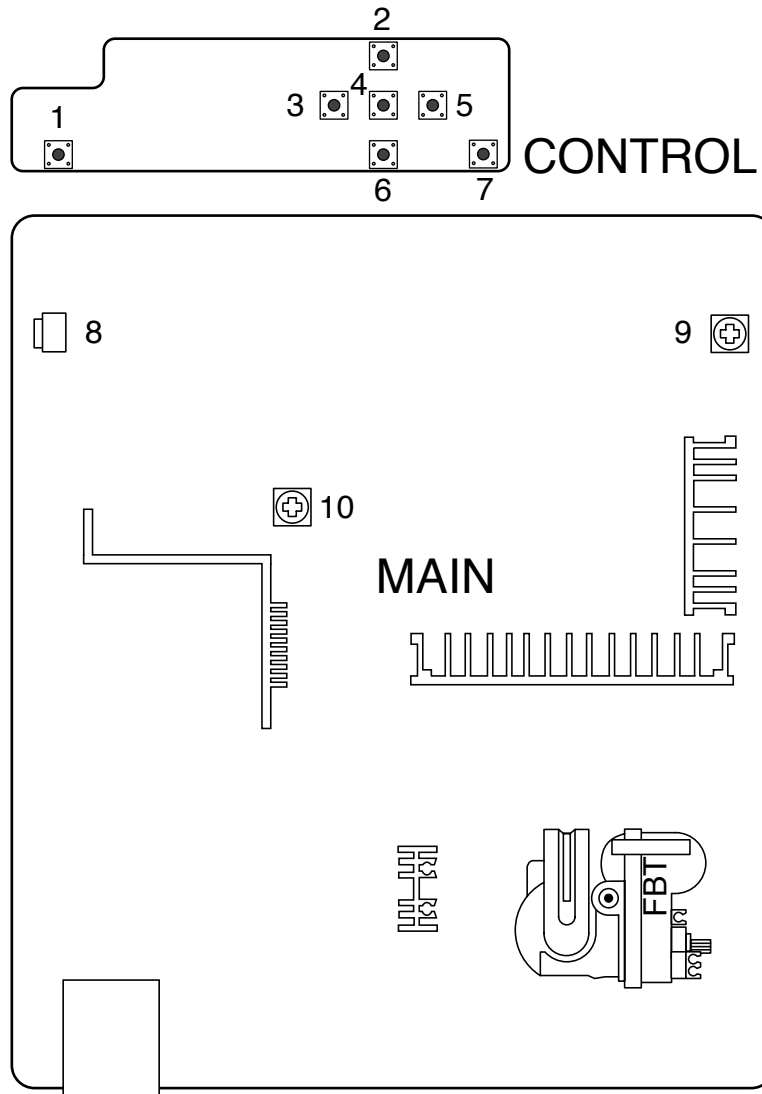
TIMING CHART



MODE			FACTORY PRESET MODE											
			MARK	MODE 1	MODE 2	MODE 3	MODE 4	MODE 5	MODE 6	MODE 7	MODE 8	MODE 9	MODE 10	MODE 11
H O R I Z O N T A L	Sync Polarity		-	+	+	+	-	-	+	-	-	+	+	
	Frequency	kHz	37.50	46.88	53.68	68.677	31.47	31.47	37.88	43.27	49.75	60.02	63.98	
	Total Period	μ s	E	26.67	21.33	18.63	14.561	31.78	31.78	26.40	23.11	20.10	16.66	15.63
	Video Active Time	μ s	A	20.32	16.16	14.22	10.836	25.42	25.42	20.00	17.78	14.52	13.00	11.85
	Blanking Time	μ s	B	6.35	5.17	4.41	3.725	6.36	6.36	6.40	5.33	5.58	3.66	3.78
	Front Porch	μ s	C	0.51	0.32	0.57	0.508	0.64	0.64	1.00	0.89	0.55	0.20	0.44
	Sync Duration	μ s	D	2.03	1.62	1.14	1.016	3.81	3.81	3.20	1.33	1.12	1.22	1.04
Back Porch	μ s	F	3.81	3.23	2.70	2.201	1.91	1.91	2.20	3.11	3.91	2.24	2.30	
V E R T I C A L	Sync Polarity		-	+	+	+	+	-	+	-	-	+	+	
	Frequency	Hz	74.99	75.01	85.07	85.00	70.08	59.94	60.32	85.01	74.95	75.03	60.02	
	Total Period	ms	E	13.335	13.331	11.775	11.764	14.269	16.684	16.579	11.763	13.407	13.328	16.661
	Video Active Time	ms	A	12.802	12.798	11.178	11.182	12.712	15.254	15.840	11.093	12.542	12.795	16.005
	Blanking Time	ms	B	0.533	0.533	0.577	0.582	1.557	1.430	0.739	0.670	0.865	0.533	0.656
	Front Porch	ms	C	0.026	0.021	0.018	0.014	0.414	0.318	0.026	0.023	0.021	0.017	0.015
	Sync Duration	ms	D	0.080	0.064	0.056	0.044	0.063	0.063	0.106	0.069	0.060	0.050	0.047
Back Porch	ms	F	0.427	0.448	0.503	0.524	1.080	1.049	0.607	0.578	0.784	0.466	0.594	
Resolution				640 x 480 75Hz	800 x 600 75Hz	800 x 600 85Hz	1024 x 768 85Hz	640 x 400 70Hz	640 x 480 59Hz	800 x 600 60Hz	640 x 480 85Hz	832 x 624 75Hz	1024 x 768 75Hz	1280 x 1024 60Hz
Recall				Yes	Yes	Yes	Yes	Yes	Yes	Yes	Yes	Yes	Yes	Yes

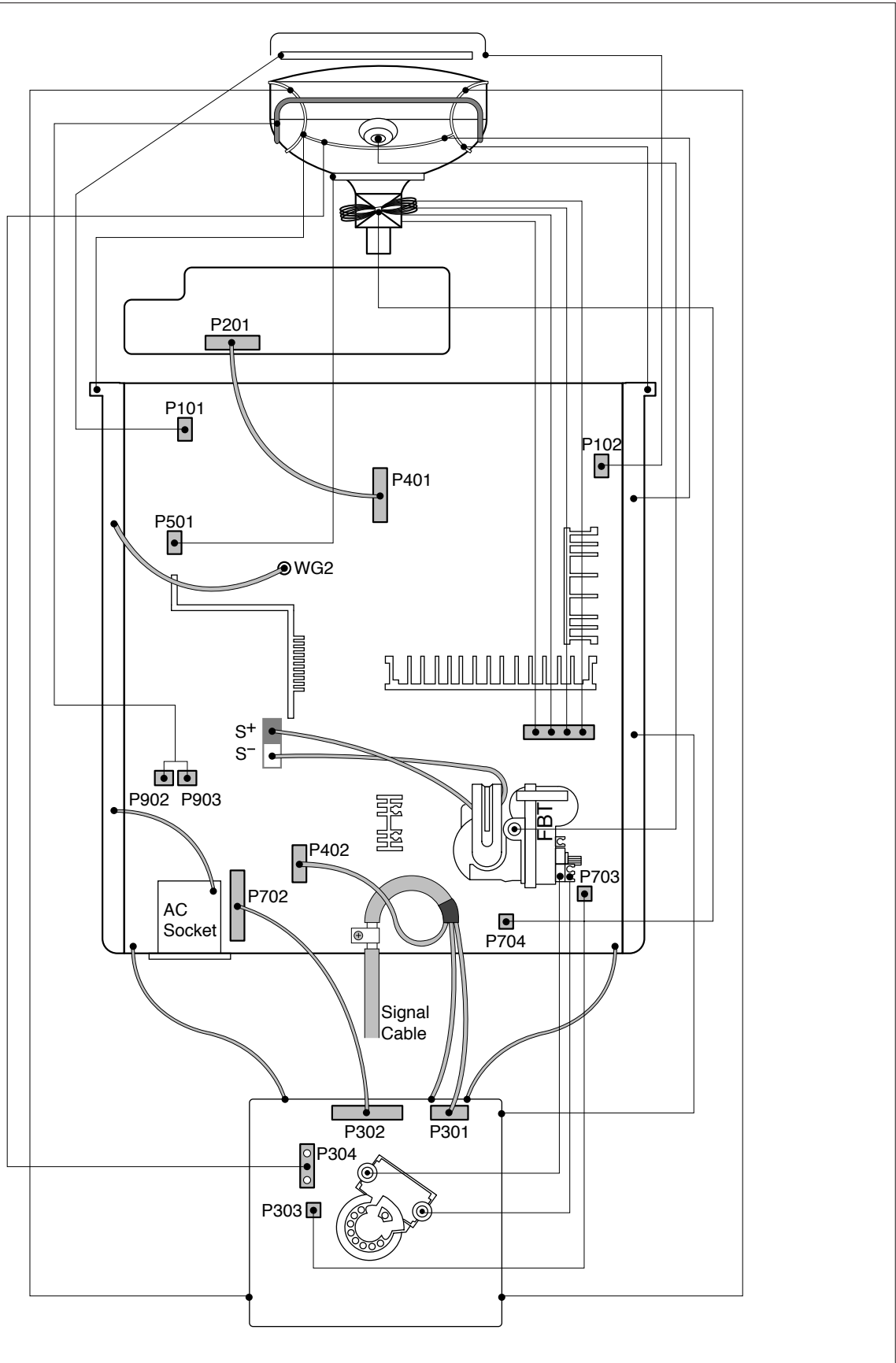
* Mode 1~Mode 4: Basic Mode (Mode 5~Mode 11: Default Mode)

CONTROL LOCATIONS



NO.	Ref. No.	Control Function	NO.	Ref. No.	Control Function
1	SW207	POWER BUTTON	6	SW203	OSD SELECT/ADJUSTMENT(UP)
2	SW205	OSD SELECT/ADJUSTMENT(DOWN)	7	SW201	OSD BUTTON
3	SW206	OSD SELECT/ADJUSTMENT(RIGHT)	8	VR101	TCO ADJUSTMENT
4	SW204	SET BUTTON	9	VR701	HIGH-VOLTAGE ADJUSTMENT
5	SW202	OSD SELECT/ADJUSTMENT(LEFT)	10	VR901	B ⁺ ADJUSTMENT

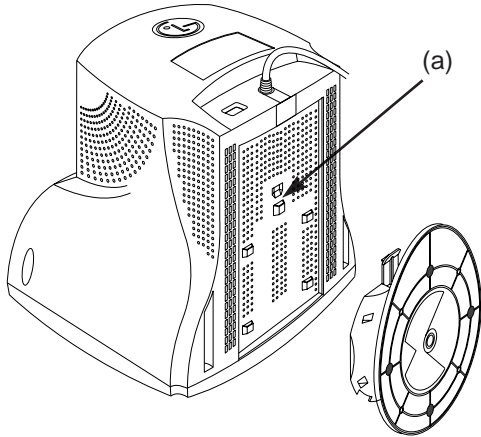
WIRING DIAGRAM



DISASSEMBLY

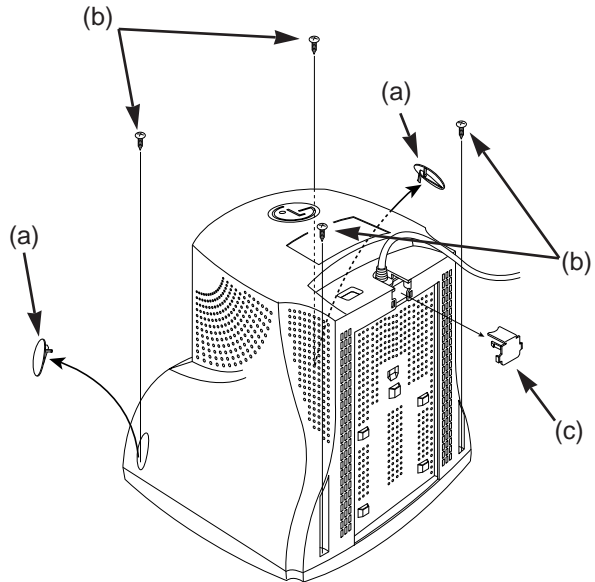
1. TILT/SWIVEL REMOVAL

- 1) Set the monitor face downward.
- 2) Pressing the latch (a), carefully remove the Tilt/Swivel by pulling it upward.



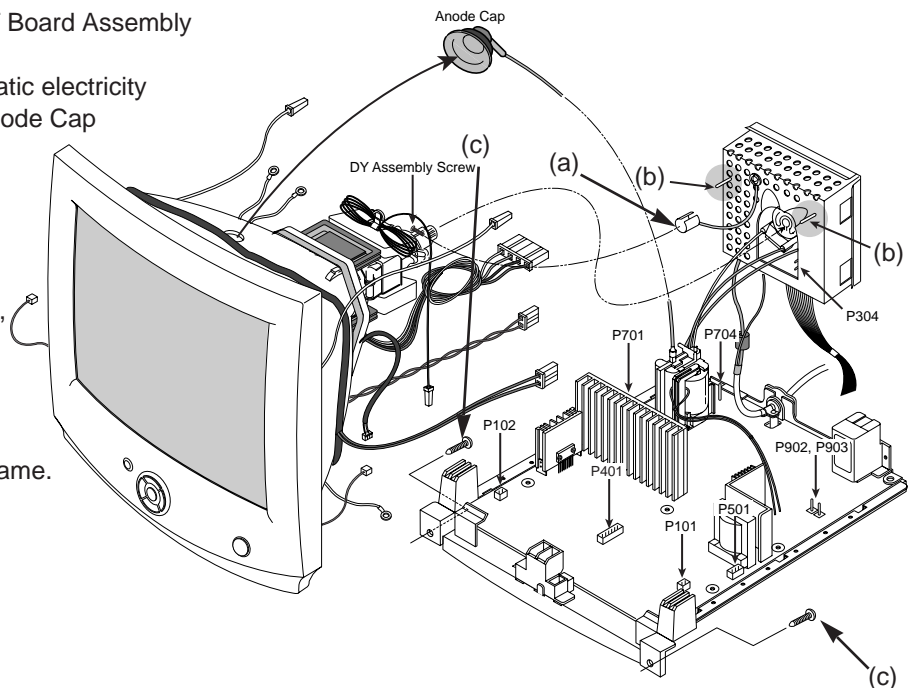
2. BACK COVER REMOVAL

- 1) Remove two screw caps (a).
- 2) Remove four screws (b).
- 3) Remove signal cable cap (c).
- 4) Slide the Back Cover away from the Front Cabinet of the monitor.



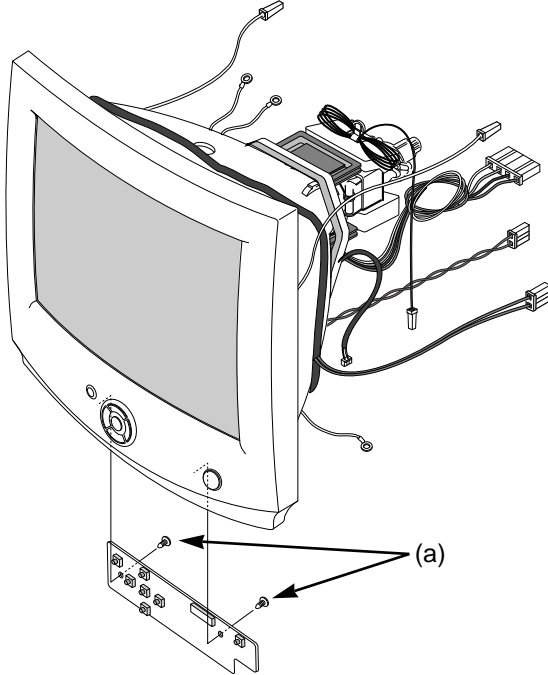
3. TOTAL CHASSIS ASSEMBLY REMOVAL

- 1) Remove connector (a) from the DY Assembly screw.
- 2) Disconnect P304 (GND Wire) and two pins (b) from the Video PCB.
- 3) Carefully separate the CDT Board Assembly from the CDT neck.
- 4) Discharge the remaining static electricity by shorting between the Anode Cap and the CDT ground.
- 5) Disconnect the Anode Cap from the CDT.
- 6) Disconnect P902, P903 (Degaussing pin), P701 (DY pin), P101, P102, P401, P501, and P704 from the Main PCB.
- 7) Remove two screws (c).
- 8) Remove the Total Chassis Assembly from the Main Frame.



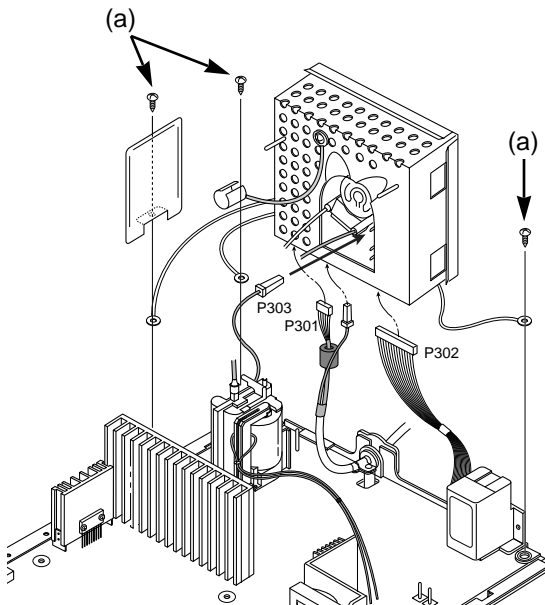
4. CONTROL PCB ASSEMBLY REMOVAL

- 1) Remove two screws (a).
- 2) Remove the Control PCB Assembly from the Front Cabinet.



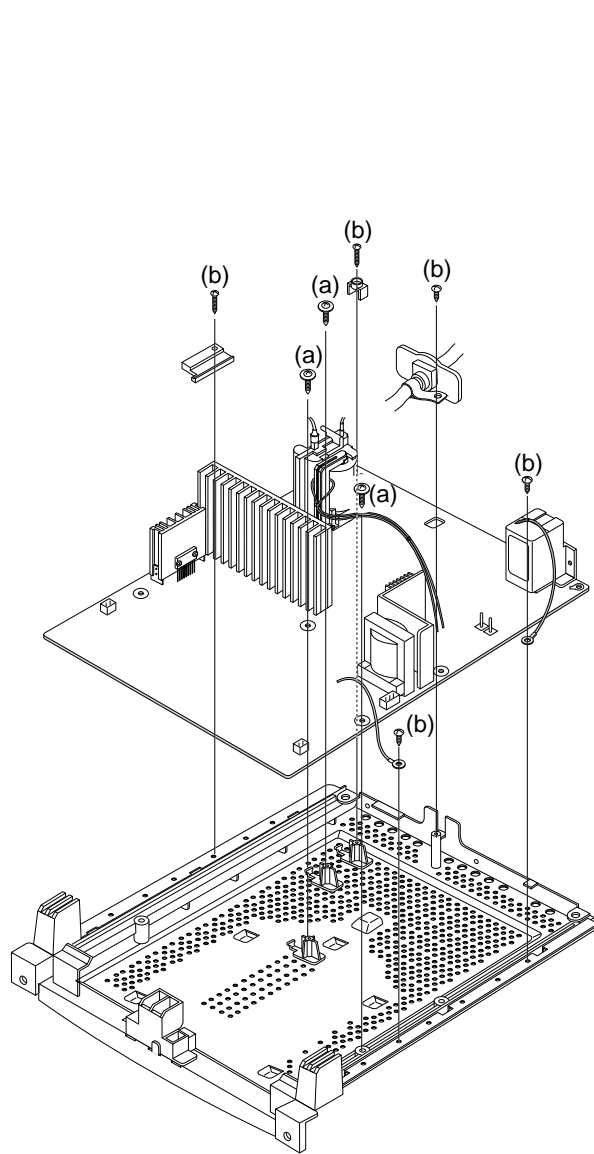
5. VIDEO PCB ASSEMBLY REMOVAL

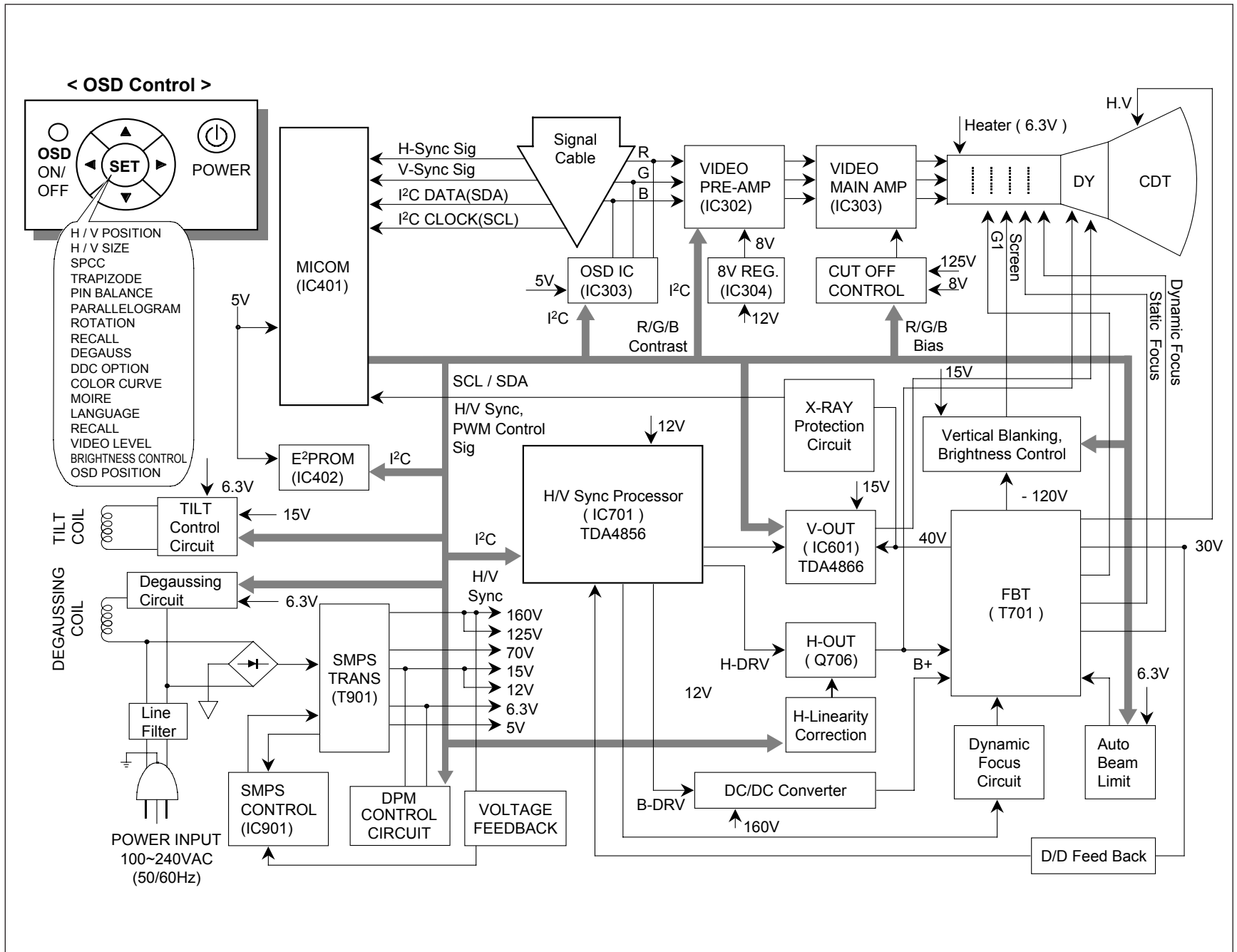
- 1) Disconnect P301, P302, and P303 from the Video PCB.
- 2) Remove three screws (a).
- 3) Remove the Video PCB Assembly from the Interface Assembly.



6. BOTTOM BRACKET REMOVAL

- 1) Remove three screws (a).
- 2) Remove five screws (b).
- 3) Remove the Bottom Bracket.





BLOCK DIAGRAM

DESCRIPTION OF BLOCK DIAGRAM

1. Line Filter & Associated Circuit.

This is used for suppressing noise of power input line flowing into the monitor and/or some noise generated in this monitor flowing out through the power input line.

That is to say, this circuit prevents interference between the monitor and other electric appliances.

2. Degauss Circuit & Coil.

The degauss circuit consists of the degaussing coil, the PTC(Positive Temperature Coefficient) thermistor(TH901), and the relay(RL901). This circuit eliminates abnormal color of the screen automatically by degaussing the shadow mask in the CRT during turning on the power switch. When you need to degauss in using the monitor, select DEGAUSS on the OSD menu.

3. SMPS(Switching Mode Power Supply).

This circuit is working of 90~264V AC(50/60Hz).

The operation procedure is as follows:

- 1) AC input voltage is rectified and smoothed by the bridge diodes (D901~D904) and the capacitor (C907).
- 2) The rectified voltage(DC) is applied to the primary coil of the transformer(T901).
- 3) The control IC(IC901) generates switching pulse to turn on and off the primary coil of the transformer (T901) repeatedly.
- 4) Depending on turn ratio of the transformer, the secondary voltages appear at the secondary coils of the transformer(T901).
- 5) These secondary voltages are rectified by each diode(D902, D922~D924, D926)) and operate other circuit. (horizontal and vertical deflection, video amplifier, ...etc.)

4. X-ray Protection.

If the high voltage of the FBT reaches up to 29kV (abnormal state), Q807 operates and IC401(MICOM) pin 11 come to low level. Then MICOM control IC701 (Deflection controller) to stop Horizontal drive pulse and stop Horizontal Deflection.

5. Micom(Microprocessor) Circuit.

The operating procedure of Micom(Microprocessor) and its associated circuit is as follows:

- 1) H and V sync signal is supplied from the signal cable.
- 2) The Micom(IC401) distinguishes polarity and frequency of H and V sync.
- 3) The Micom sets operating mode and offers the controlled data. (H-size, H-position, V-size, ... etc.)
- 4) The controlled data of each mode is stored in itself.
- 5) User can adjust screen condition by each OSD function. The data of the adjusted condition is stored in EEPROM(IC402).

6. Horizontal and Vertical Oscillation.

This circuit generates the horizontal pulse and the vertical pulse by taking the H and V sync signal.

This circuit consists of the TDA4856(IC701) and the associated circuit.

7. Oscillating Circuit for D/D Converter.

This circuit generates the saw-tooth wave which has the horizontal period by taking output of the TDA4856(IC701).

8. D/D(DC to DC) Converter.

This circuit supplies DC voltage to the horizontal deflection output circuit by decreasing DC 160V which is the secondary voltage of the SMPS in accordance with the input horizontal sync signal.

9. Side-Pincushion & Trapezoid Correction Circuit.

This circuit improves the side-pincushion and the trapezoid distortion of the screen by mixing parabola and saw-tooth wave to output of the horizontal deflection D/D converter which is used for the supply voltage(B⁺) of the deflection circuit.

10. Horizontal Deflection Output Circuit.

This circuit makes the horizontal deflection by supplying the saw-tooth current to the horizontal deflection yoke.

11. High Voltage Output & FBT(Flyback Transformer).

The high voltage output circuit is used for generating pulse to the primary coil of the FBT(Flyback Transformer (T701)). A boosted voltage(about 26kV) appears at the secondary of the FBT and it is supplied to the anode, focus, and screen voltage of the CRT.

12. H-Linearity Correction Circuit.

This circuit corrects the horizontal linearity for each horizontal sync frequency.

13. Vertical Output Circuit.

This circuit takes the vertical ramp wave from the TDA4856(IC701) and performs the vertical deflection by supplying the saw-tooth current to the vertical deflection yoke.

14. Dynamic Focus Output Circuit.

This circuit takes the horizontal and the vertical parabola waves from the TDA4856(IC701) and amplifies it to maintain constant focus on center and corners in the screen.

15. H & V Blanking and Brightness Control.

Blanking circuit eliminates retrace line by supplying negative pulse to the G1 of the CRT. And Brightness circuit is used for control of the screen brightness by changing DC level of the G1.

16. Image Rotation (Tilt) Circuit.

This circuit corrects the tilt of the screen by supplying the image rotation signal to the tilt coil which is attached near the deflection yoke of the CRT.

17. Video Pre-Amp Circuit.

This circuit amplifies the analog video signal from 0-0.7V to 0-4V. It is operated by taking the clamp, R, G, B drive and contrast signal from the Micom(IC401).

18. Video Output Amp Circuit.

This circuit amplifies the video signal which comes from the video pre-amp circuit and amplified it to applied the CRT cathode.

ADJUSTMENT

GENERAL INFORMATION

All adjustment are thoroughly checked and corrected when the monitor leaves the factory, but sometimes several adjustments may be required.

Adjustment should be following procedure and after warming up for a minimum of 30 minutes.

- Alignment appliances and tools.
 - IBM compatible PC.
 - Programmable Signal Generator.
(eg. VG-819 made by Astrodesign Co.)
 - EPROM or EEPROM with saved each mode data.
 - Alignment Adaptor and Software.
 - Digital Voltmeter.
 - White Balance Meter.
 - Luminance Meter.
 - High-voltage Meter.

AUTOMATIC AND MANUAL DEGAUSSING

The degaussing coil is mounted around the CDT so that automatic degaussing when turn on the monitor. But a monitor is moved or faced in a different direction, become poor color purity cause of CDT magnetized, then press DEGAUSS on the OSD menu.

ADJUSTMENT PROCEDURE & METHOD

- Install the cable for adjustment such as Figure 1 and run the alignment program on the DOS for IBM compatible PC.
- Set external Brightness and Contrast volume to max position.

1. Adjustment for B⁺ Voltage.

- 1) Display cross hatch pattern at Mode 4.
- 2) Adjust voltage to 160V±0.5Vdc with **VR901**.

2. Adjustment for High-Voltage.

- 1) Display cross hatch pattern at Mode 4.
- 2) Adjust FBT B⁺ voltage to 140V±0.5Vdc with **VR701**.

3. Adjustment for Factory Mode (Preset Mode).

- 1) Display cross hatch pattern at Mode 1.
- 2) Run alignment program for StudioWorks 775N, CB775 on the IBM compatible PC.
- 3) Power button of the monitor turn off → turn on.
- 4) COMMAND → START → Y(Yes) command.
- 5) DIST. ADJ. → TILT command.
- 6) Adjust tilt as arrow keys to be the best condition.

- 7) DIST. ADJ. → BALANCE command.
- 8) Adjust balance of side-pincushion as arrow keys to be the best condition.
- 9) DIST. ADJ. → BALANCE command.
- 10) Adjust parallelogram as arrow keys to be the best condition.
- 11) DIST. ADJ. → FOS. ADJ command.
- 12) Adjust V-SIZE as arrow keys to 230±2mm.
- 13) Adjust V-POSITION as arrow keys to center of the screen.
- 14) Adjust H-SIZE as arrow keys to 310±2mm.
- 15) Adjust H-POSITION as arrow keys to center of the screen.
- 16) Adjust S-PCC (Side-Pincushion) as arrow keys to be the best condition.
- 17) Adjust TRAPEZOID as arrow keys to be the best condition.
- 18) Display from Mode 1 to Mode 4 and repeat above from number 12) to 17).
- 19) PRESET EXIT → Y (Yes) command.

4. Adjustment for White Balance and Luminance.

- 1) Set the White Balance Meter.
- 2) Press the DEGAUSS on the OSD menu for demagnetization of the CDT.
- 3) Set Brightness and SUB-Brightness to Max position.
- 4) Display color 0,0 pattern at Mode 4.
- 5) COLOR ADJ. → LUMINANCE command of the alignment program.
- 6) COLOR ADJ. → BIAS ADJ. command of the alignment program.
- 7) Check whether blue color or not at R-BIAS and G-BIAS to min position and B-BIAS to 0.3±0.05FL. Check it's not blue color.
- 8) Adjust R-BIAS and G-BIAS command to $x=0.281±0.01$ and $y=0.311±0.01$ on the White Balance Meter with PC arrow keys.
- 9) Adjust SUB-Brightness command to 0.4±0.1FL of the raster luminance.
- 10) Display color 15,0 box pattern (70x70mm) at Mode 4.
- 11) Set Contrast and SUB-Contrast to max position.
- 12) DRIVE ADJ command.
- 13) Set B-DRIVE to 2/3 150(96) (decimal) at DRIVE of the alignment program.
- 14) Adjust R-DRIVE and G-DRIVE command to white balance $x=0.281±0.003$ and $y=0.311±0.003$ on the White Balance Meter with PC arrow keys.

- 15) Adjust SUB-CONTRAST command to $47 \pm 2FL$ of the color 15,0 box pattern (70x70mm) luminance at mode 4 and save in color 1.
- 16) Display color 15,0 full white pattern at Mode 4.
- 17) COLOR ADJ. → LUMINANCE → ABL command.
- 18) Adjust ABL to $31 \pm 1FL$ of the luminance.
- 19) Exit from the program.

5. Adjustment for Focus.

- 1) Set the Brightness and Contrast to max position.
- 2) Display H character in full screen at Mode 4.
- 3) Adjust two Focus control on the FBT that focus should be the best condition.

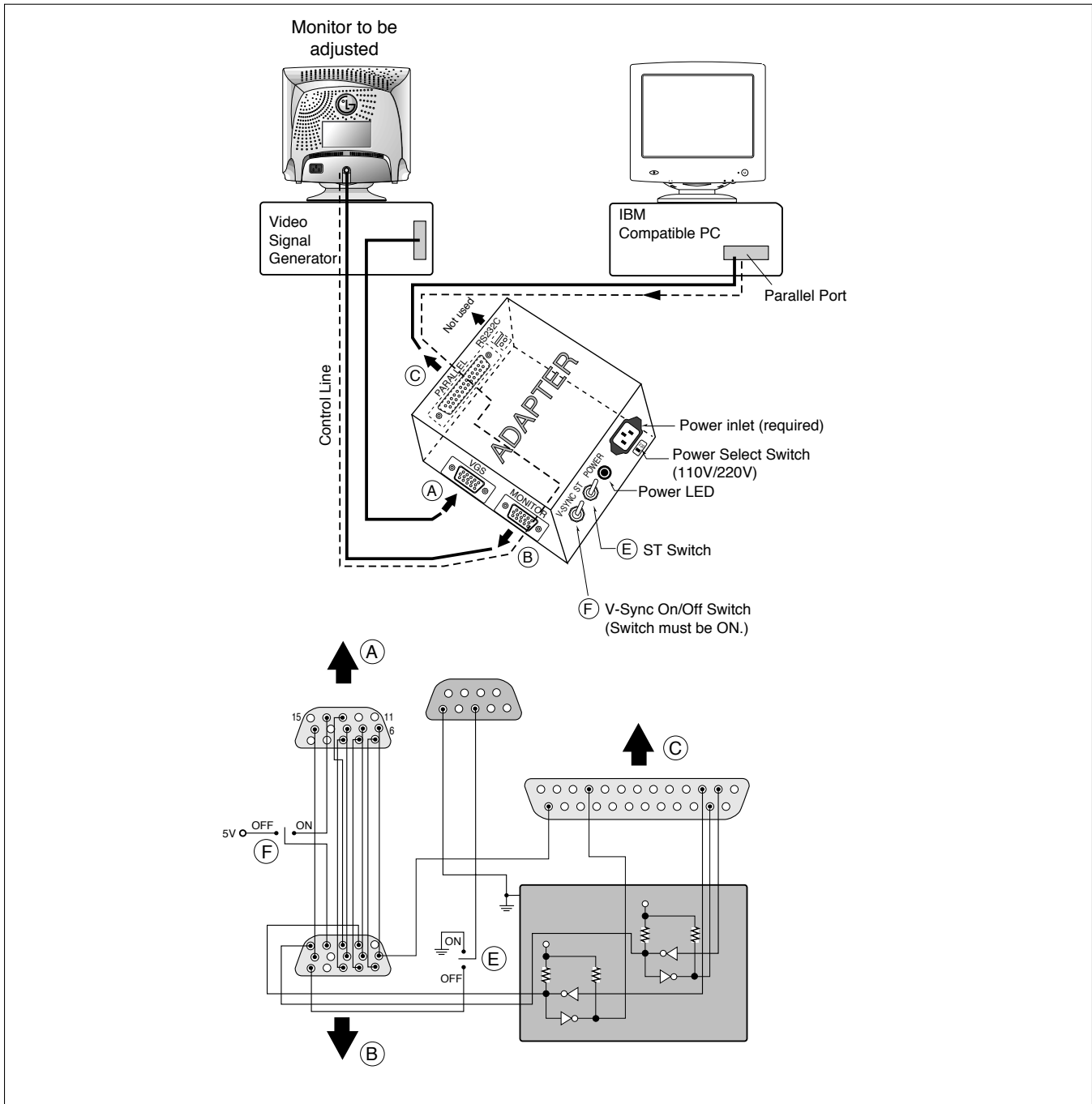
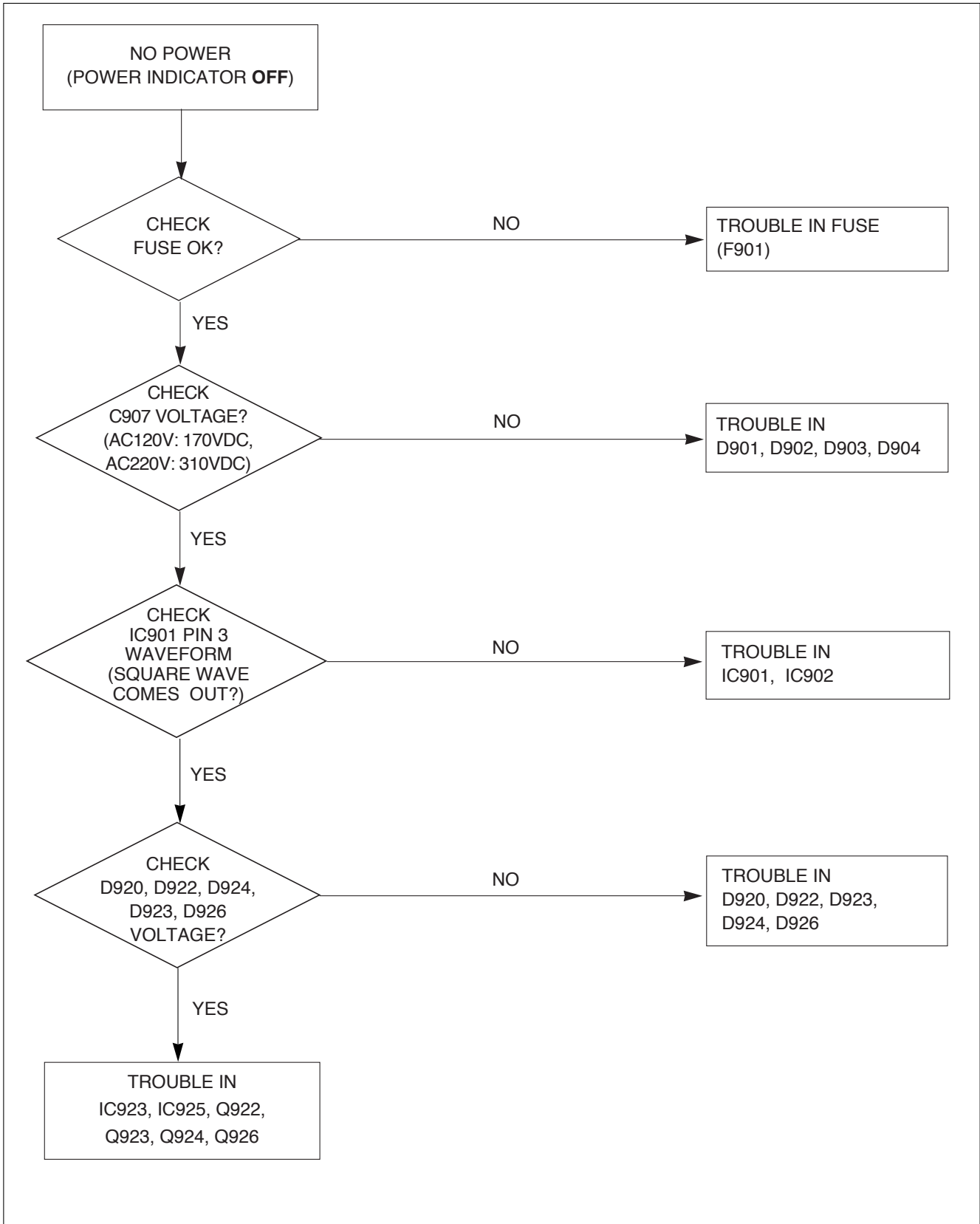


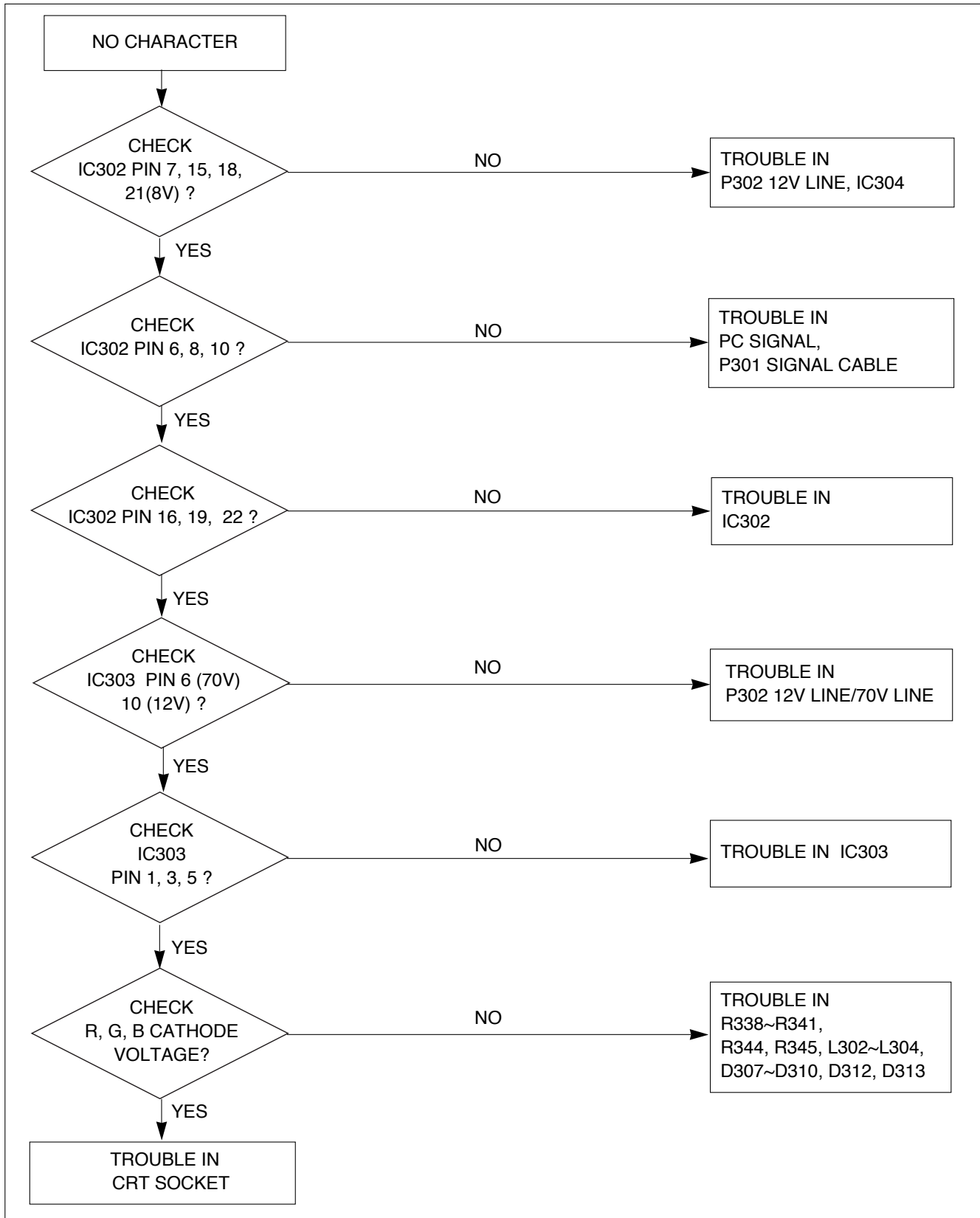
Figure 1. Cable Connection

TROUBLESHOOTING GUIDE

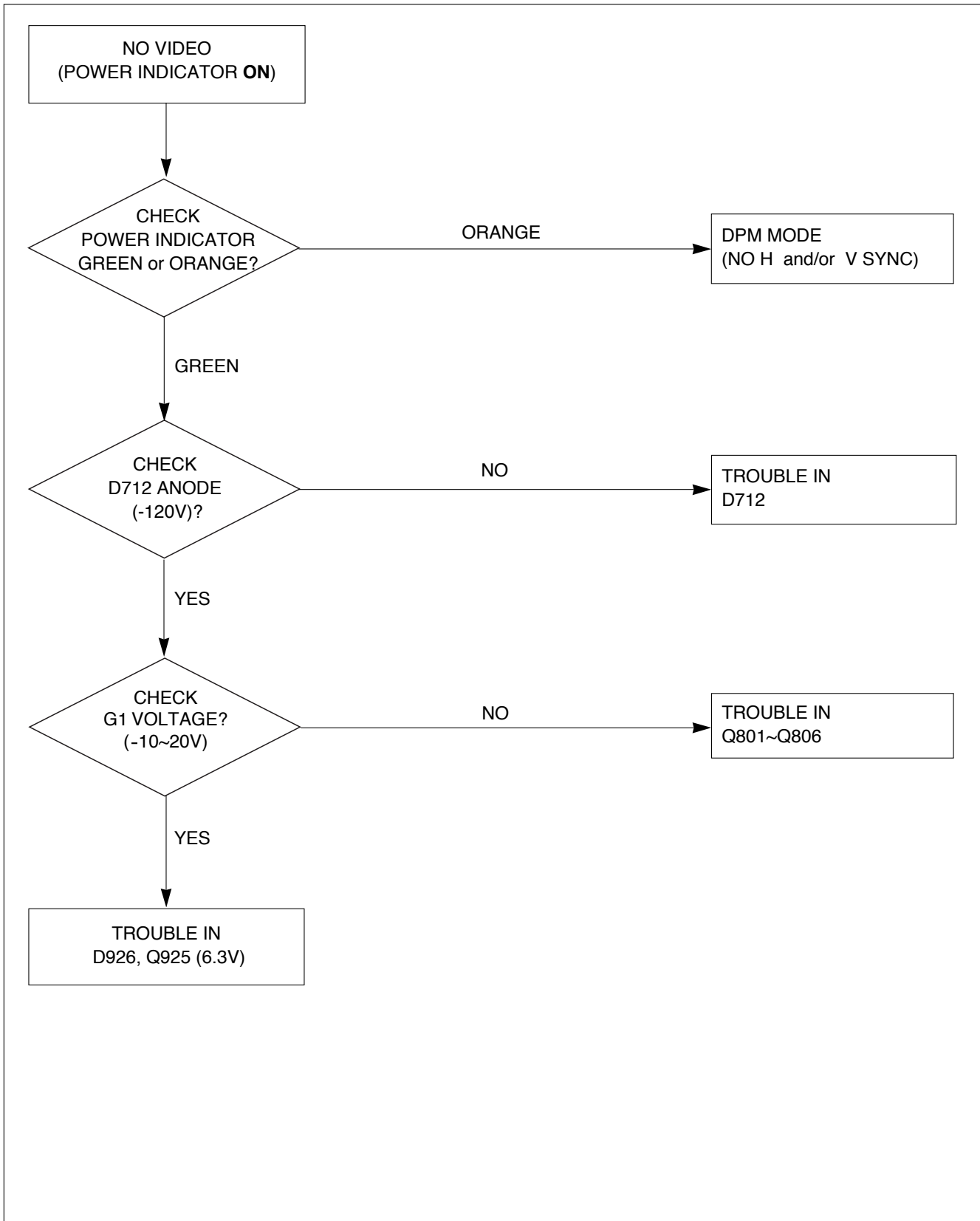
1. NO POWER



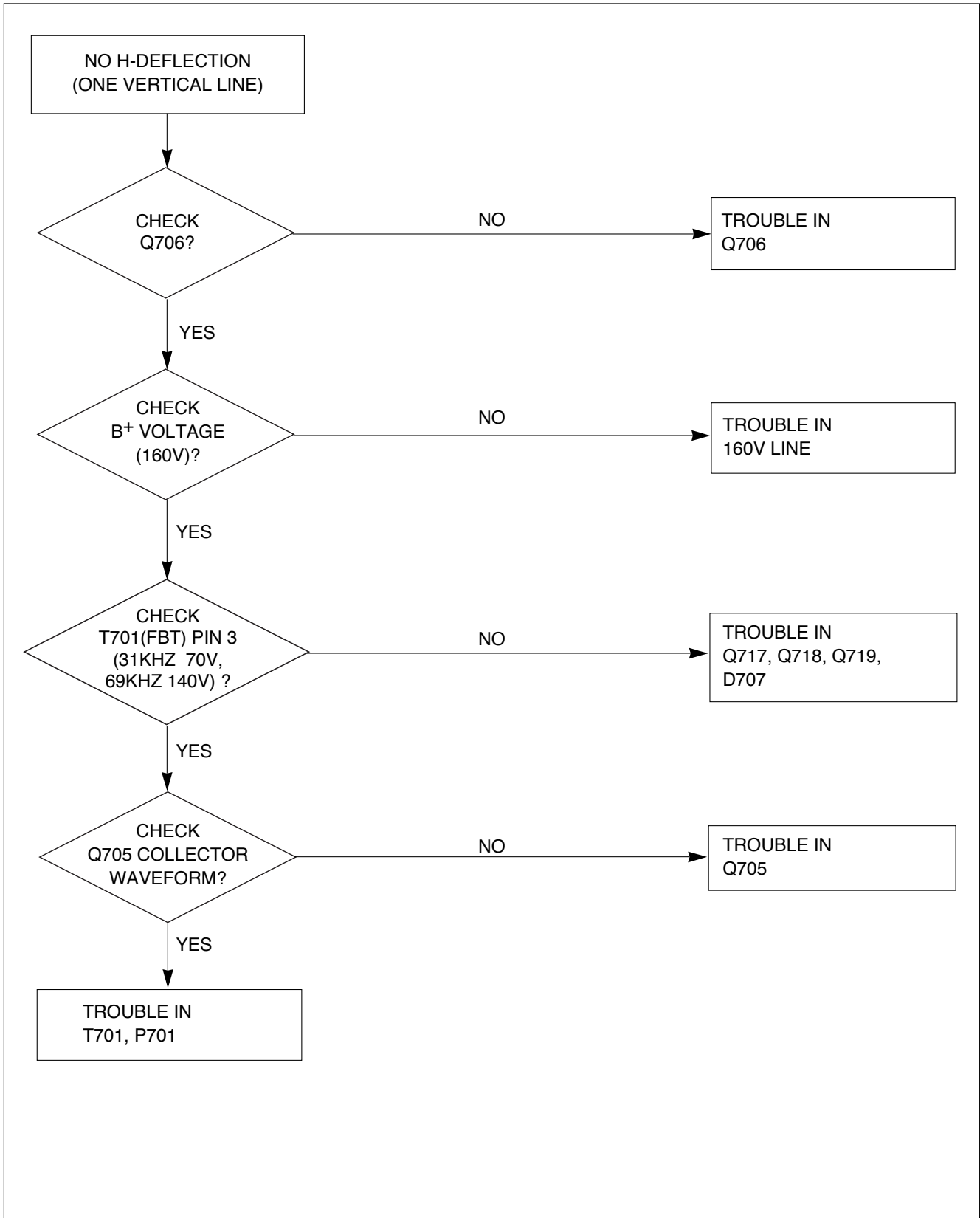
2. NO CHARACTER



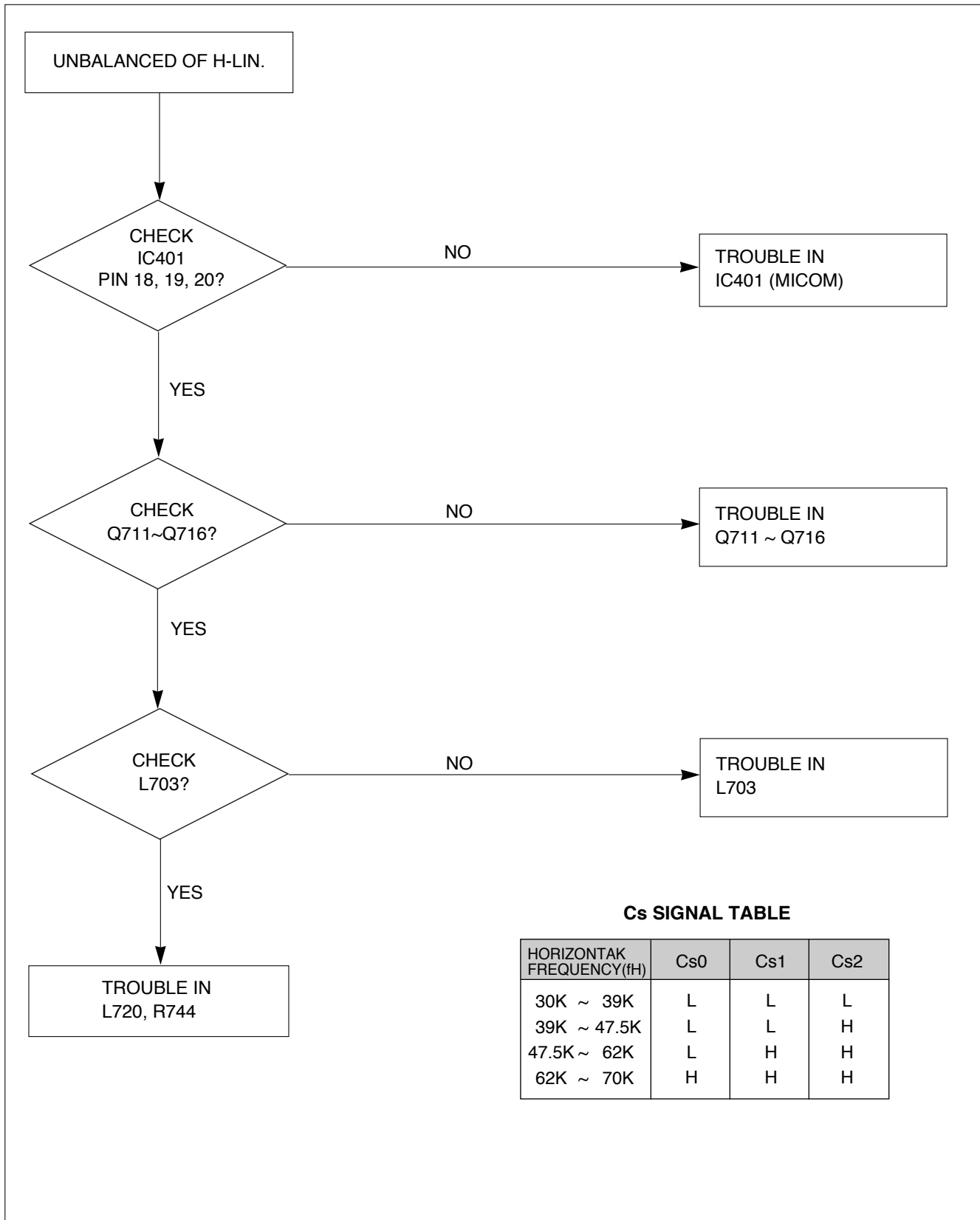
3. NO RASTER



4. NO HORIZONTAL DEFLECTION



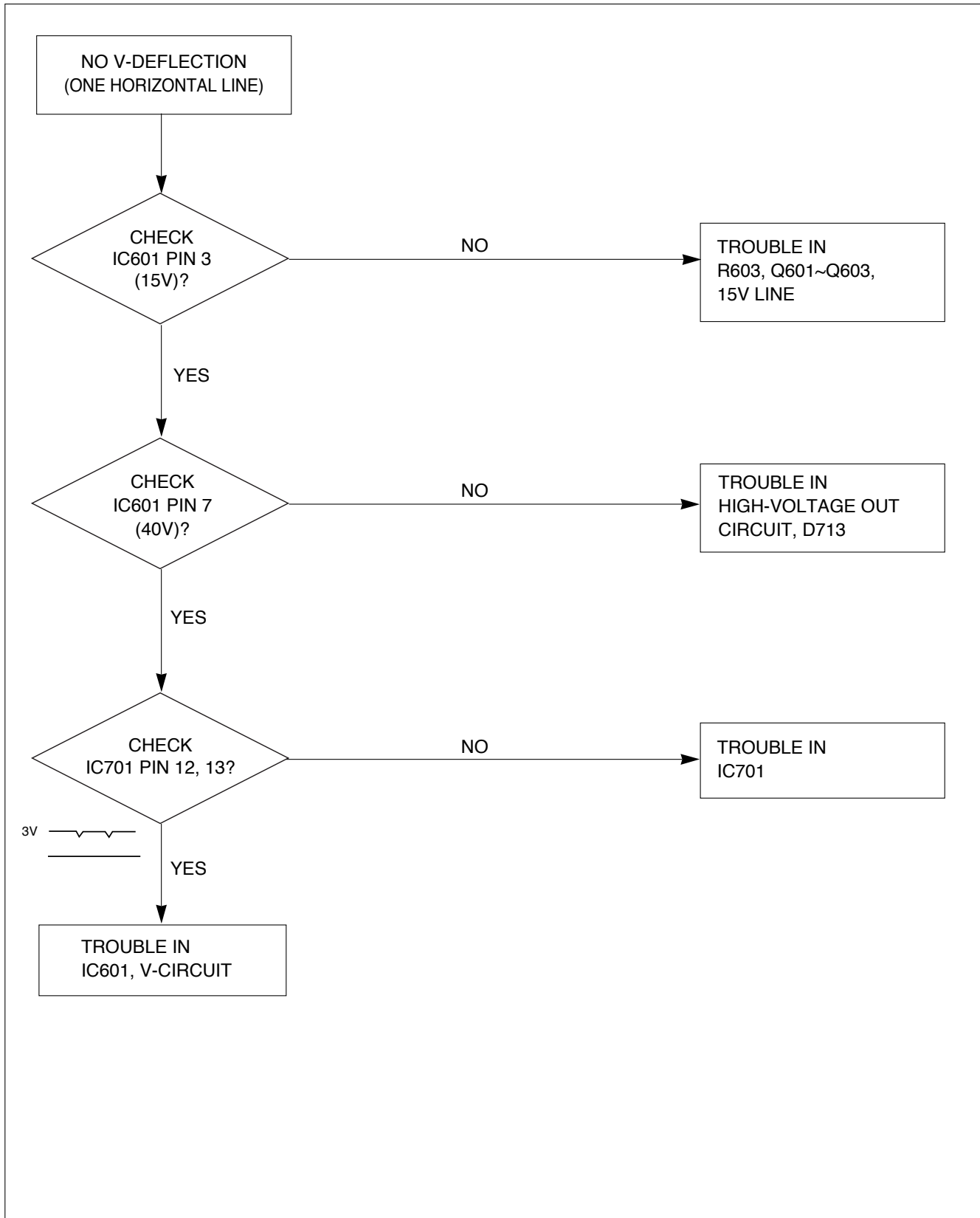
5. TROUBLE IN H-LINEARITY



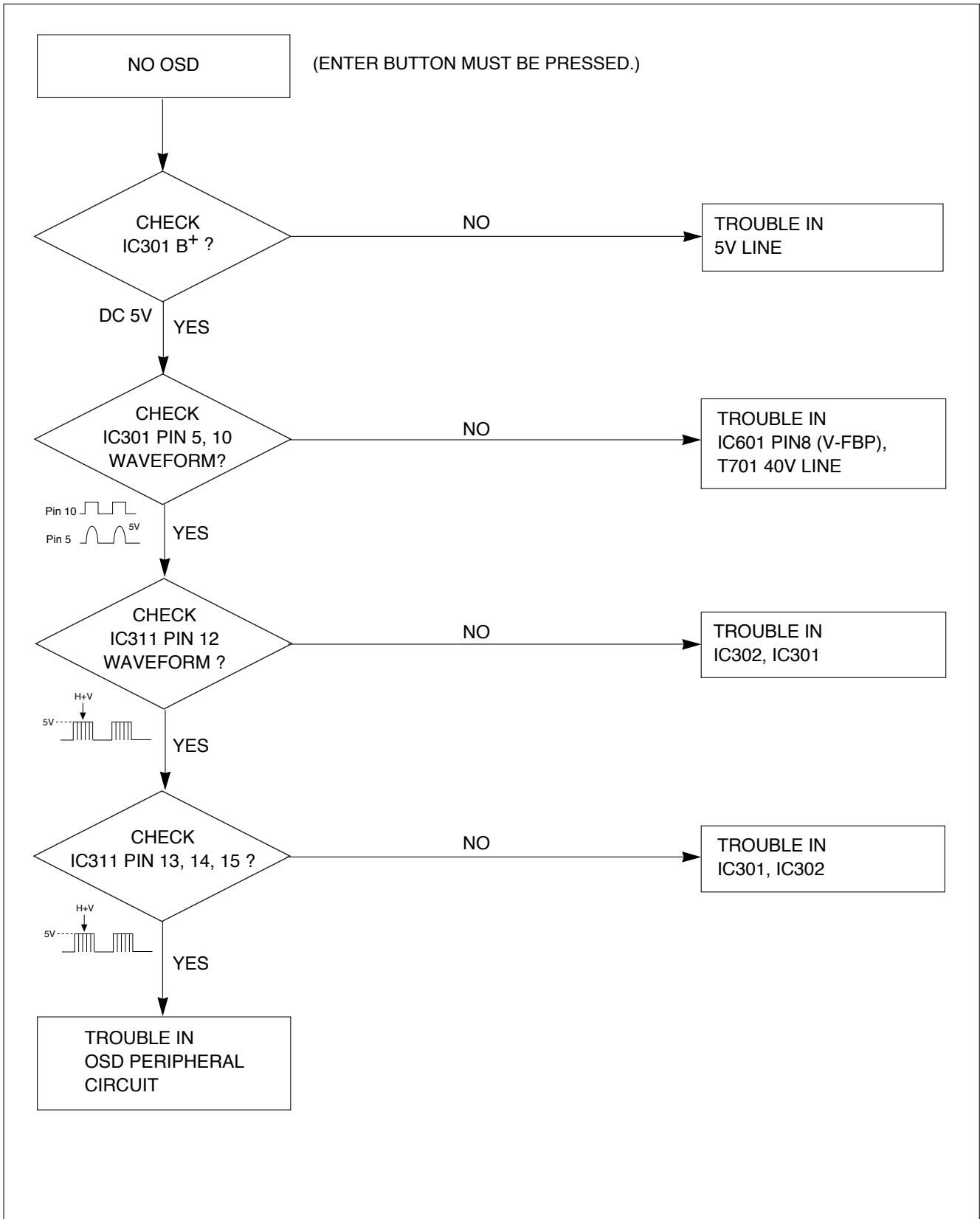
Cs SIGNAL TABLE

HORIZONTAL FREQUENCY(fH)	Cs0	Cs1	Cs2
30K ~ 39K	L	L	L
39K ~ 47.5K	L	L	H
47.5K ~ 62K	L	H	H
62K ~ 70K	H	H	H

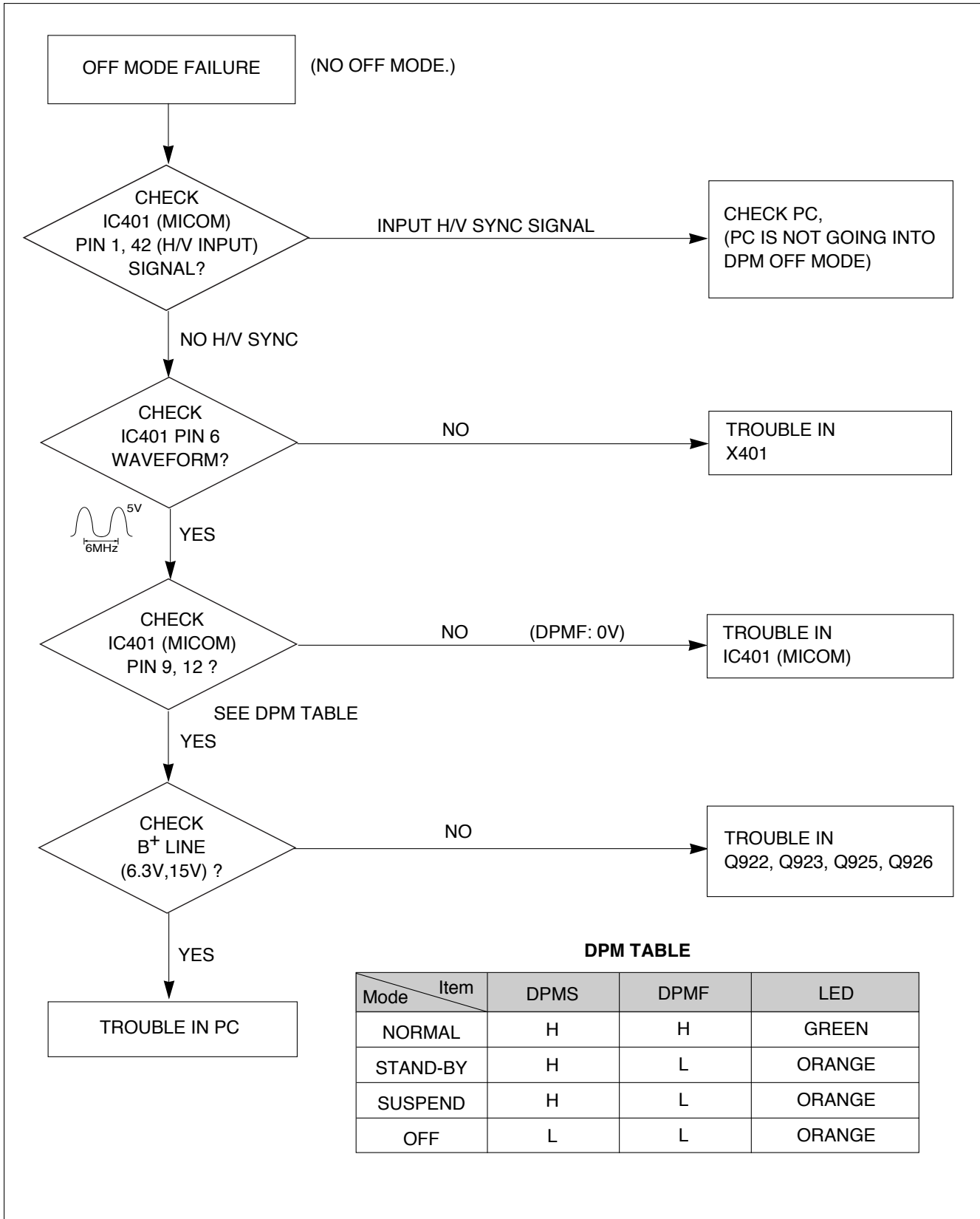
6. NO VERTICAL DEFLECTION



7. TROUBLE IN OSD



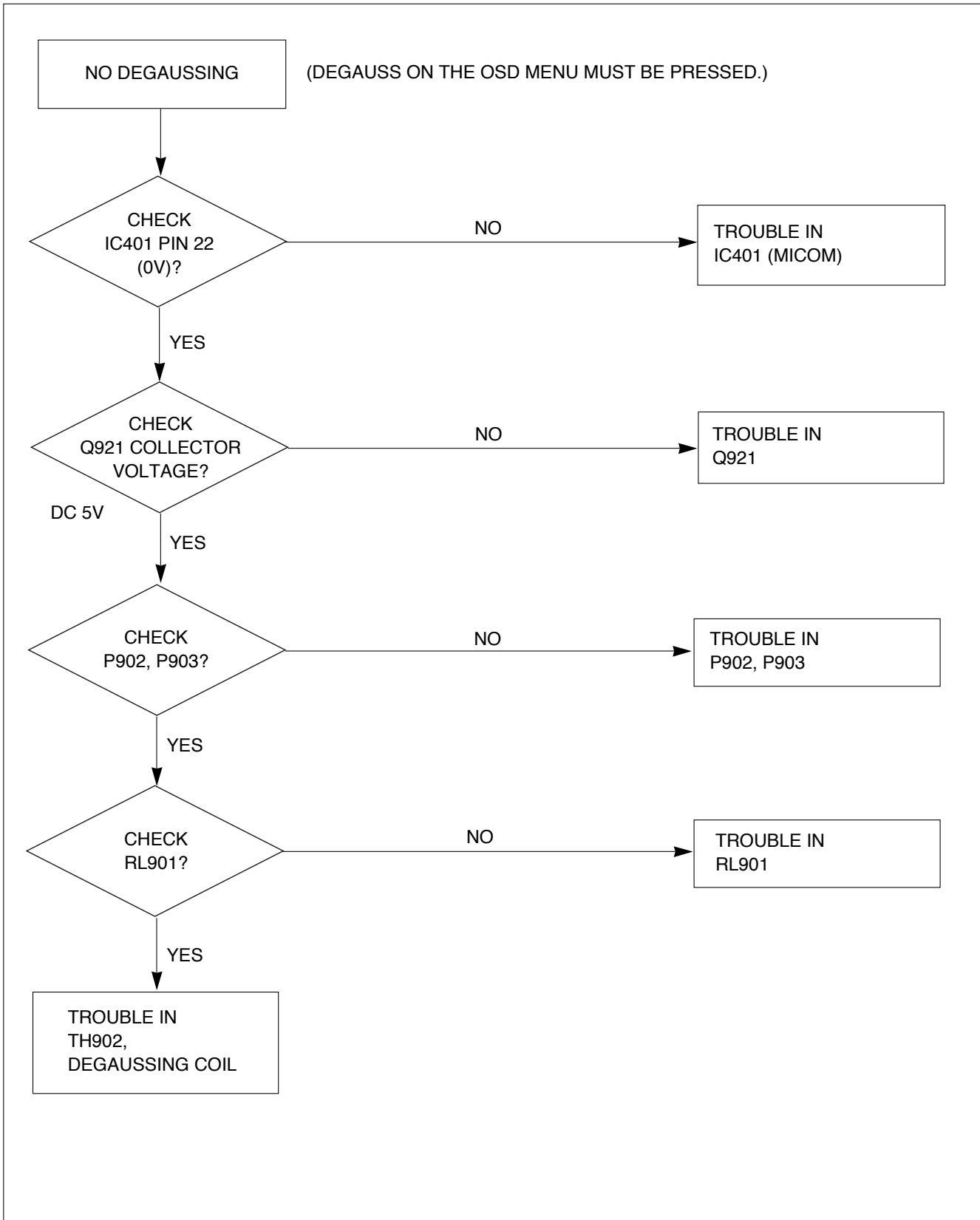
8. TROUBLE IN DPM



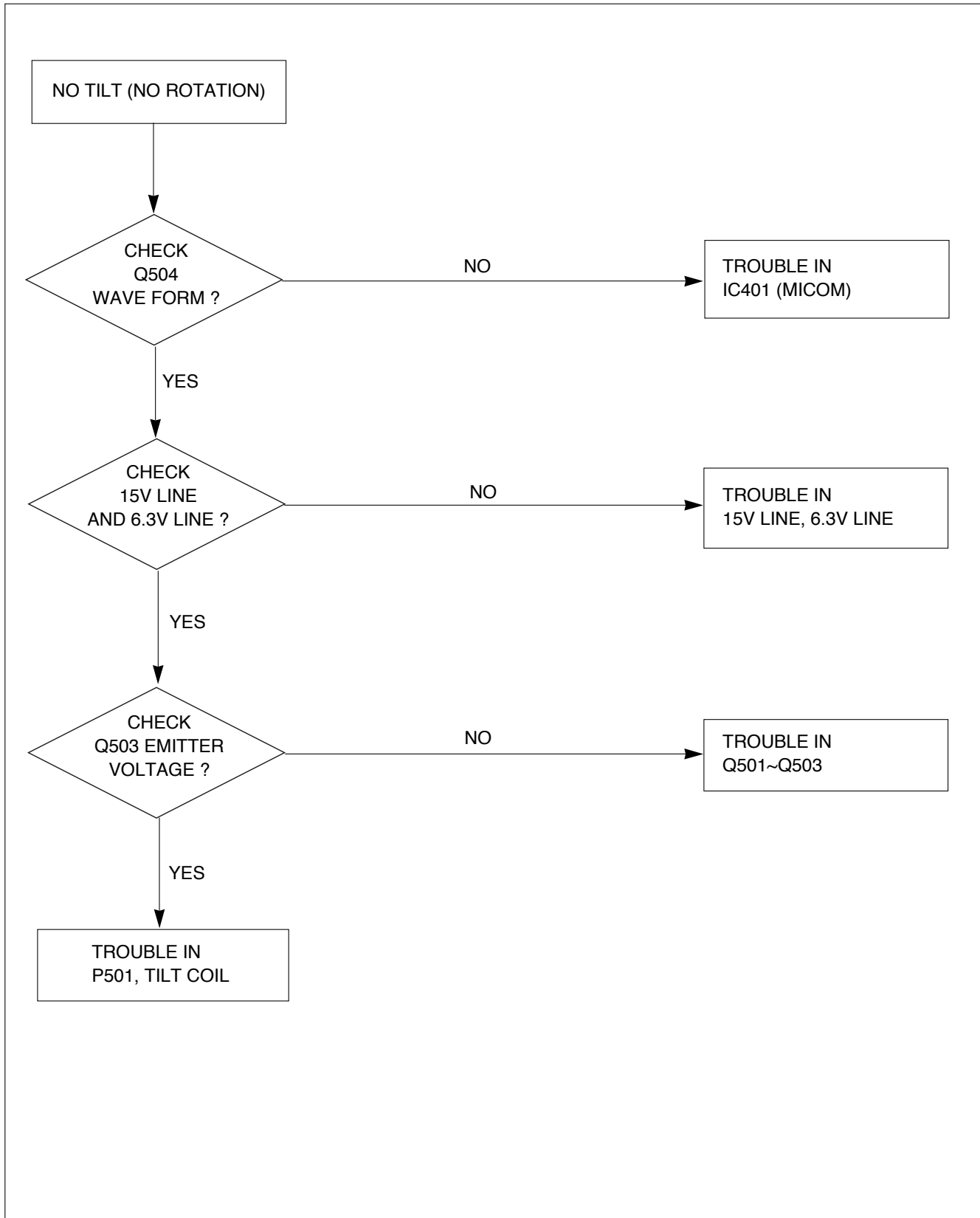
DPM TABLE

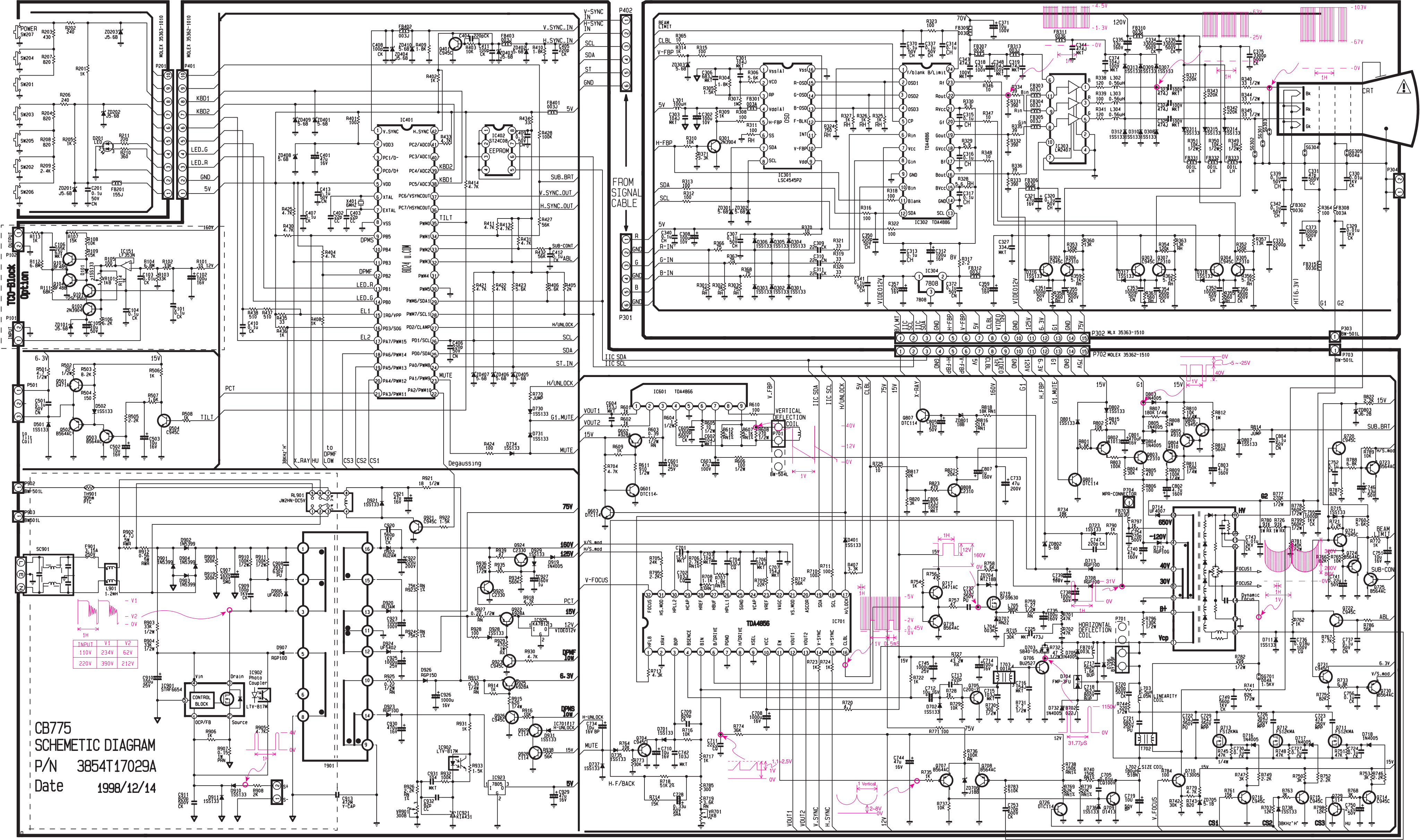
Mode \ Item	DPMS	DPMF	LED
NORMAL	H	H	GREEN
STAND-BY	H	L	ORANGE
SUSPEND	H	L	ORANGE
OFF	L	L	ORANGE

9. NO DEGAUSSING

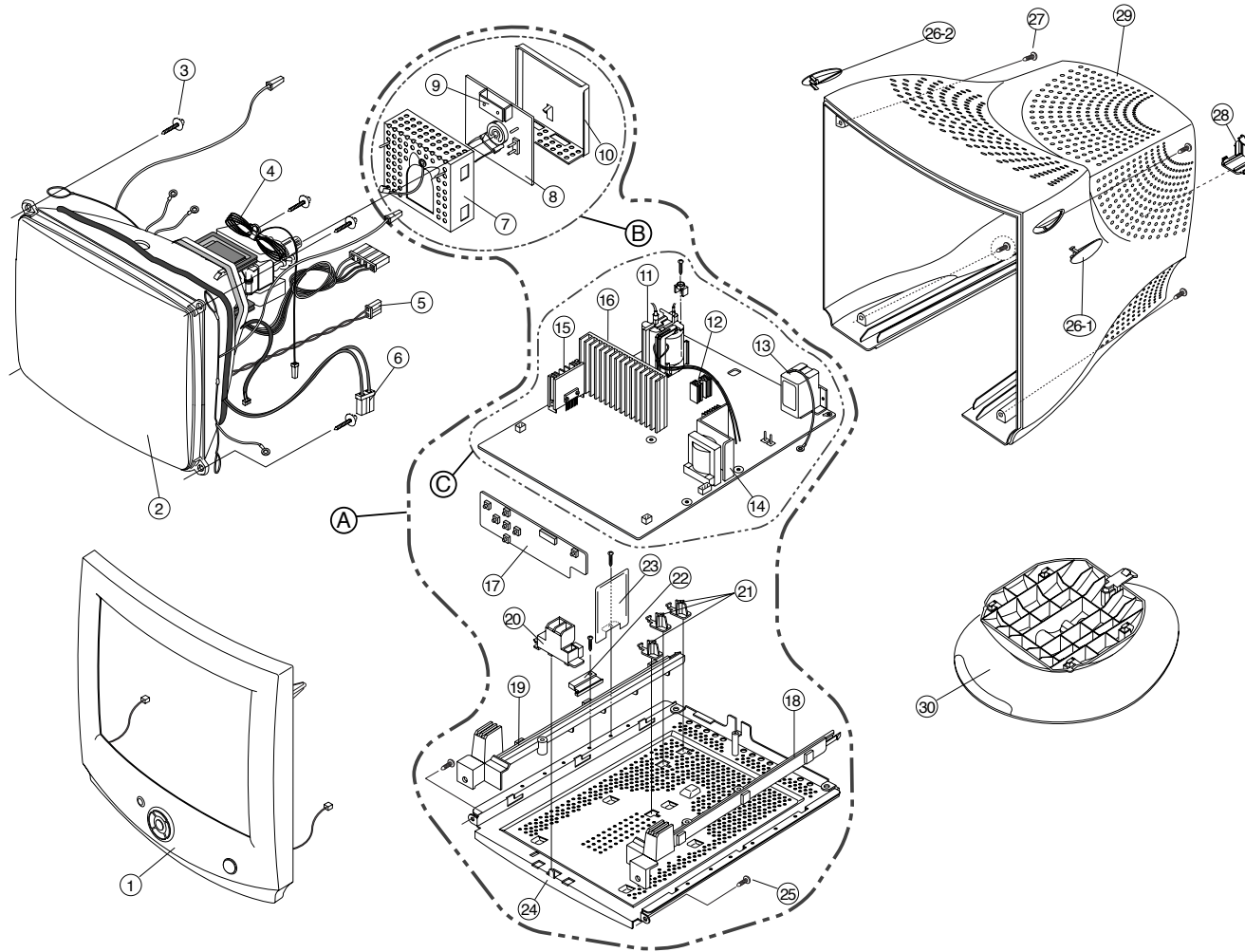


10. NO TILT (NO ROTATION)





EXPLODED VIEW



EXPLODED VIEW PARTS LIST

Ref. No.	Part No.	Description	Q'ty	Material
1	3091TKC029B	CABINET ASS'Y, MPR-II, StdioWorks 775N	1	GE SEA-2 UL94-5V
	3091TKC029A	CABINET ASS'Y, TCO95, StdioWorks 775C		
2	2423GC0B85D	CDT, M41LFQ813X 46NLAA	1	
3	339-002H	SCREW ASS'Y, PHP+5x20 BP+GW18	4	
4	6631T11005A	TCO OPEN LOOP WIRE (TCO ONLY)	1	
5	6868T17003C	CRT GROUND WIRE	1	
6	6140TC3001A	DEGAUSSING COIL	1	
7	4815TKV006E	BRACKET, VIDEO FRONT	1	SPTE-C (t=0.3)
8	6871TVH066B	PCB ASS'Y, VIDEO	1	
9	4920TKP015A	PLATE, HEAT SINK FOR IC303	1	
10	4815TKV007J	METAL ASS'Y, VIDEO REAR SHIELD	1	SPTE-C (t=0.3)
11	6174Z-1012B	FBT, FMTC61	1	
12	407-S29H	PLATE, HEAT SINK FOR Q719	1	AL (t=2.0)
13	6200TJB001D	AC SOCKET	1	
14	407-T73D	PLATE, HEAT SINK FOR IC901	1	AL (t=2.0)
15	407-T98M	PLATE, HEAT SINK FOR IC601	1	AL
16	4920TKC003D	COMPRESS, HEAT SINK FOR D704, Q709, Q706	1	AL
17	6871TST097A	PCB ASS'Y, CONTROL	1	
18	4810TKM031A	BRACKET, PCB GUIDE (RIGHT)	1	
19	4810TKM031B	BRACKET, PCB GUIDE (LEFT)	1	
20	4810TKK084A	BRACKET, PCB HOLDER	1	
21	4810TKK060A	HOLDER (PCB)	3	
22	431-128A	PIECE HOLDER	1	
23	407-T83A	TCO SHIELD	1	
24	4950TKS118A	METAL, BOTTOM SHIELD	1	SBHG1-A (t=1.0)
25	332-102F	SCREW, PTP+4x20BP	2	
26-1	3550TKK055A	SCREW COVER (RIGHT)	1	
26-2	3550TKK055B	SCREW COVER (LEFT)	1	
27	332-102G	SCREW, PTP+4x30	4	
28	3550TKK056A	COVER, PIECE REAR	1	
29	3809TKC014B	BACK COVER ASS'Y, MPR-II	1	GE SEA-2 UL94-5V
	3809TKC014A	BACK COVER ASS'Y, TCO95		
30	3043TKK036A	TILT SWIVEL ASS'Y	1	HIPS 60HR UL 94-HB
A	3141TZZ029B	CHASSIS ASS'Y, MAIN TOTAL, MPR-II	1	
	3141TZZ029A	CHASSIS ASS'Y, MAIN TOTAL, TCO-95		
B	6871TVT066B	CHASSIS ASS'Y, VIDEO BOARD	1	
C	6871TMT095B	PCB ASS'Y, MAIN BOARD, MPR-II	1	
	6871TMT095A	PCB ASS'Y, MAIN BOARD, TCO95		

REPLACEMENT PARTS LIST

CAUTION: BEFORE REPLACING ANY OF THESE COMPONENTS,
READ CAREFULLY THE **SAFETY PRECAUTIONS** IN THIS MANUAL.

* NOTE : **S** SAFETY Mark
AL ALTERNATIVE PARTS

MODEL: S/W775N, S/W775C				DATE: 1998.12.23.	
*S	*AL	LOC. NO.	PART NO.	DESCRIPTION / SPECIFICATION	REMARK
MAIN BOARD					
CAPACITORS					
		C401	0CE4766F618	CAPACITOR, AL.ELECTROLYTIC, 47U SMS 16V M FM5 TP5	
		C402	0CC2200K405	CAPACITOR, CERAMIC (TEMP. COMPENSATE), 22P 50V J SL	
		C403	0CC2200K405	CAPACITOR, CERAMIC (TEMP. COMPENSATE), 22P 50V J SL	
		C404	0CK2210K515	CAPACITOR, CERAMIC (HIGH DIELECTRIC), 220P 50V K B	
		C405	0CK2210K515	CAPACITOR, CERAMIC (HIGH DIELECTRIC), 220P 50V K B	
		C406	0CN2210K519	CAPACITOR, TUBULAR(HIGH DIELEC), 220P 50V K B TA52	
		C407	0CK1040K945	CAPACITOR, CERAMIC (HIGH DIELECTRIC), 0.1UF 50V Z F TR	
		C408	0CK1010K515	CAPACITOR, CERAMIC (HIGH DIELECTRIC), 100PF 50V K B TR	
		C409	0CN1040K949	CAPACITOR, TUBULAR(HIGH DIELEC), 0.1M 50V Z F TA52	
		C410	0CK1040K945	CAPACITOR, CERAMIC (HIGH DIELECTRIC), 0.1UF 50V Z F TR	
		C411	0CK1010K515	CAPACITOR, CERAMIC (HIGH DIELECTRIC), 100PF 50V K B TR	
		C412	0CK1040K945	CAPACITOR, CERAMIC (HIGH DIELECTRIC), 0.1UF 50V Z F TR	
		C413	0CN1040K949	CAPACITOR, TUBULAR(HIGH DIELEC), 0.1M 50V Z F TA52	
		C501	0CN1040K949	CAPACITOR, TUBULAR(HIGH DIELEC), 0.1M 50V Z F TA52	
		C502	0CE1066F618	CAPACITOR, AL.ELECTROLYTIC, 10UF SMS 16V M FL TP5	
		C503	0CE1066F618	CAPACITOR, AL.ELECTROLYTIC, 10UF SMS 16V M FL TP5	
		C601	0CE477CH618	CAPACITOR, AL.ELECTROLYTIC, 470UF SHL 25V M FL TP5	
		C602	0CZZTFT001Z	CAPACITOR, ECQB1H104JM3 104J 50V TP5.0 MATSUSHITA	
	or	C602	181-288B	CAPACITOR, POLYESTER, MKT 100V 104JTR PHS26104	
		C603	0CE476CN618	CAPACITOR, AL.ELECTROLYTIC, 47UF SHL 100V M FL TP5	
		C604	181-288P	CAPACITOR, POLYESTER, MKT 100V 153JTR PHS86153	
		C605	0CK3320W515	CAPACITOR, CERAMIC (HIGH DIELECTRIC), 3300P 500V K B	
		C701	181-288R	CAPACITOR, POLYESTER, MKT 100V 123JTR PHS86123	
		C702	0CZZTFT001M	CAPACITOR, ECQB1H103JM3 103J 50V TP5.0 MATSUSHITA	
	or	C702	181-288N	CAPACITOR, POLYESTER, MKT 100V 103JTR PHS86103	
	or	C702	0CQ1031N419	CAPACITOR, POLYESTER, 0.01U 100V J POLY NI TP	
		C703	0CZZTFT001Z	CAPACITOR, ECQB1H104JM3 104J 50V TP5.0 MATSUSHITA	
	or	C703	181-288B	CAPACITOR, POLYESTER, MKT 100V 104JTR PHS26104	
		C704	0CZZTFT001F	CAPACITOR, ECQB1H332JM3 332J 50V TP5.0 MATSUSHITA	
	or	C704	0CQ3321N419	CAPACITOR, POLYESTER 3300P 100V J POLY NI TP	
		C705	0CQ1031N419	CAPACITOR, POLYESTER, 0.01U 100V J POLY NI TP	
		C706	0CZZTFT001Z	CAPACITOR, ECQB1H104JM3 104J 50V TP5.0 MATSUSHITA	
	or	C706	181-288B	CAPACITOR, POLYESTER, MKT 100V 104JTR PHS26104	
		C707	0CZZTFT002B	CAPACITOR, ECQV1H154JZ3 154J 50V TP5.0 MATSUSHITA	
	or	C707	181-288Q	CAPACITOR, POLYESTER MKT 100V 154JTR PHS26154	
		C708	0CE108CF618	CAPACITOR, AL.ELECTROLYTIC, 1000UF SHL 16V M FL TP5	
		C709	0CK8210W515	CAPACITOR, CERAMIC (HIGH DIELECTRIC), 820P 500V K B TS	

*S	*AL	LOC. NO.	PART NO.	DESCRIPTION / SPECIFICATION	REMARK
		C710	0CE1066F618	CAPACITOR, AL.ELECTROLYTIC, 10UF SMS 16V M FL TP5	
		C711	0CZZTFT001D	CAPACITOR, ECQB1H222JM3 222J 50V TP5.0 MATSUSHITA	
	or	C711	0CQ2221N419	CAPACITOR, POLYESTER, 2200PF 100V J PE NI TP	
		C712	0CE1066F618	CAPACITOR, AL.ELECTROLYTIC, 10UF SMS 16V M FL TP5	
		C713	0CC2210K415	CAPACITOR, CERAMIC (TEMP. COMPENSATE), 220P 50V J	
		C714	0CE1076F618	CAPACITOR, AL.ELECTROLYTIC, 100UF SMS 16V M TP(5)	
		C715	0CZZTFT001M	CAPACITOR, ECQB1H103JM3 103J 50V TP5.0 MATSUSHITA	
	or	C715	181-288N	CAPACITOR, POLYESTER, MKT 100V 103JTR PHS86103	
	or	C715	0CQ1031N419	CAPACITOR, POLYESTER, 0.01U 100V J POLY NI TP	
		C716	0CZZTFT002B	CAPACITOR, ECQV1H154JZ3 154J 50V TP5.0 MATSUSHITA	
	or	C716	181-288Q	CAPACITOR, POLYESTER MKT 100V 154JTR PHS26154	
	⚠	C717	181-309Z	CAPACITOR, POLYPROPYLENE, 562H 31.0*17.0*10.0*20.0 1.6KV	
		C718	0CBZTBU003H	CAPACITOR, POLYPROPYLENE, 362J 20.0*12.0*7.0*10.0 800V	
		C719	0CZZTAB001A	CAPACITOR, SM-BP(P)/BP 10UF 50V 13*25 BK5	
		C720	0CK8210W515	CAPACITOR, CERAMIC (HIGH DIELECTRIC), 820P 500V K B TS	
		C721	181-477L	CAPACITOR, POLYPROPYLENE, 682J 19.5*12.0*7.0*7.5 250V	
		C722	181-303G	CAPACITOR, POLYPROPYLENE, 334J 31.0*22.0*15.0*20.0 250V	
		C723	181-305M	CAPACITOR, POLYPROPYLENE, 824J 26.0*21.5*13.0*15.0 250V	
		C724	0CK1040K945	CAPACITOR, CERAMIC (HIGH DIELECTRIC), 0.1UF 50V Z F TR	
		C725	181-288D	CAPACITOR, POLYESTER, MKT 100V 473JTR PHS26473	
		C726	181-482W	CAPACITOR, POLYPROPYLENE, 304J 19.0*18.5*10.5*7.5 250V	
		C727	0CK1040K945	CAPACITOR, CERAMIC (HIGH DIELECTRIC), 0.1UF 50V Z F TR	
		C728	0CE3344K638	CAPACITOR, AL.ELECTROLYTIC, 0.33UF SRA,SS 50V M FM5	
		C729	181-482C	CAPACITOR, POLYPROPYLENE, 154J 18.0*14.0*8.0*7.5 250V	
		C730	0CK1040K945	CAPACITOR, CERAMIC (HIGH DIELECTRIC), 0.1UF 50V Z F TR	
		C732	181-477U	CAPACITOR, POLYPROPYLENE, 333J 19.5*13.0*7.5*7.5 250V	
		C733	0CE476CQ618	CAPACITOR, AL.ELECTROLYTIC, 47U SHL 200V M FL TP5	
		C734	181-310A	CAPACITOR, AL.ELECTROLYTIC, 10UF SM-BP(D) 5*11 16V M	
		C735	0CE107CP618	CAPACITOR, AL.ELECTROLYTIC, 100U SHL 160V M FL TP5	
		C736	0CQ1831N419	CAPACITOR, POLYESTER, 0.018UF 100V J PE NI TP	
		C737	0CN1040K949	CAPACITOR, TUBULAR(HIGH DIELEC), 0.1M 50V Z F TA52	
		C738	0CE1076K618	CAPACITOR, AL.ELECTROLYTIC, 100U SMS 50V M FM5 TP5	
		C739	0CE476CN618	CAPACITOR, AL.ELECTROLYTIC, 47UF SHL 100V M FL TP5	
		C740	0CE476CP618	CAPACITOR, AL.ELECTROLYTIC, 47U SHL 160V M FL TP5	
		C741	0CE2246K618	CAPACITOR, AL.ELECTROLYTIC, 0.22M SMS 50V M FM5 TP(5)	
		C742	0CZZTFT001M	CAPACITOR, ECQB1H103JM3 103J 50V TP5.0 MATSUSHITA	
	or	C742	181-288N	CAPACITOR, POLYESTER, MKT 100V 103JTR PHS86103	
	or	C742	0CQ1031N419	CAPACITOR, POLYESTER, 0.01U 100V J POLY NI TP	
		C743	0CK10302945	CAPACITOR, CERAMIC (HIGH DIELECTRIC), 0.01UF 2KV Z F	
		C744	0CE4766F618	CAPACITOR, AL.ELECTROLYTIC, 47U SMS 16V M FM5 TP5	
		C745	0CE108CH618	CAPACITOR, AL.ELECTROLYTIC, 1000UF SHL 25V M FL TP5	
		C746	0CE3344K638	CAPACITOR, AL.ELECTROLYTIC, 0.33UF SRA,SS 50V M FM5	
		C747	0CC2210K415	CAPACITOR, CERAMIC (TEMP. COMPENSATE), 220P 50V	
		C749	0CK56101515	CAPACITOR, CERAMIC (HIGH DIELECTRIC), 560P 1KV K B TS	
		C750	0CE2256K618	CAPACITOR, AL.ELECTROLYTIC, 2.2U SMS 50V M FM5 TP5	
		C751	0CE1066F618	CAPACITOR, AL.ELECTROLYTIC, 10UF SMS 16V M FL TP5	

MODEL: S/W775N, S/W775C				DATE: 1998.12.23.	
*S	*AL	LOC. NO.	PART NO.	DESCRIPTION / SPECIFICATION	REMARK
		C752	0CK1040K945	CAPACITOR, CERAMIC (HIGH DIELECTRIC), 0.1UF 50V Z F TR	
		C753	0CQ5621N419	CAPACITOR, POLYESTER, 5600P 100V J POLY NI TP	
		C754	0CK2710W515	CAPACITOR, CERAMIC (HIGH DIELECTRIC), 270P 500V	
		C755	0CK10201515	CAPACITOR, CERAMIC (HIGH DIELECTRIC), 1000P 1KV K B TS	
		C756	0CK1040K945	CAPACITOR, CERAMIC (HIGH DIELECTRIC), 0.1UF 50V Z F TR	
		C801	0CE477CF618	CAPACITOR, AL.ELECTROLYTIC, 470UF SHL 16V M FL TP5	
		C802	0CE4756P618	CAPACITOR, AL.ELECTROLYTIC, 4.7U SMS 160V M FM5 TP5	
		C803	0CE4756P618	CAPACITOR, AL.ELECTROLYTIC, 4.7U SMS 160V M FM5 TP5	
		C804	0CN1040K949	CAPACITOR, TUBULAR(HIGH DIELEC), 0.1M 50V Z F TA52	
		C805	0CE1066K618	CAPACITOR, AL.ELECTROLYTIC, 10M SMS 50V M FM5	
		C806	181-288P	CAPACITOR, POLYESTER, MKT 100V 153JTR PHS86153	
		C807	0CE1056P618	CAPACITOR, AL.ELECTROLYTIC, 1U SMS 160V M FM5 TP5	
		C907	181-124R	CAPACITOR, AL.ELECTROLYTIC, 220UF SMG(25.4*40) 400V M	
		C908	181-308V	CAPACITOR, POLYPROPYLENE, 393J 20.0*21.0*13.5*10.0 630V	
		C909	0CK10101515	CAPACITOR, CERAMIC (HIGH DIELECTRIC), 100PF 1KV K B TR	
		C910	0CE1076H618	CAPACITOR, AL.ELECTROLYTIC, 100M SMS 25V M FM5 TP(5)	
		C911	0CK8210W515	CAPACITOR, CERAMIC (HIGH DIELECTRIC), 820P 500V K B TS	
	⚠	C913	0CKZTTA003C	CAPACITOR, CERAMIC (HIGH DIELECTRIC), SC E 472M	
	⚠ or	C913	0CKZTTA001C	CAPACITOR, CERAMIC (HIGH DIELECTRIC), 1307-486E	
		C920	0CK56101515	CAPACITOR, CERAMIC (HIGH DIELECTRIC), 560P 1KV K B TS	
		C921	0CE4766F618	CAPACITOR, AL.ELECTROLYTIC, 47U SMS 16V M FM5 TP5	
		C922	0CE227CQ650	CAPACITOR, AL.ELECTROLYTIC, 220UF SHL 200V M FM7.5	
		C923	0CE107CN618	CAPACITOR, AL.ELECTROLYTIC, 100UF SHL 100V M FL TP5	
		C925	0CE108CH618	CAPACITOR, AL.ELECTROLYTIC, 1000UF SHL 25V M FL TP5	
		C926	0CE108CF618	CAPACITOR, AL.ELECTROLYTIC, 1000UF SHL 16V M FL TP5	
		C927	0CE1056P618	CAPACITOR, AL.ELECTROLYTIC, 1U SMS 160V M FM5 TP5	
		C929	0CE4766F618	CAPACITOR, AL.ELECTROLYTIC, 47U SMS 16V M FM5 TP5	
		C930	0CE477CF618	CAPACITOR, AL.ELECTROLYTIC, 470UF SHL 16V M FL TP5	
		C931	0CZZTFT001Z	CAPACITOR, ECQB1H104JM3 104J 50V TP5.0 MATSUSHITA	
	or	C931	181-288B	CAPACITOR, POLYESTER, MKT 100V 104JTR PHS26104	
		C932	0CC8200K415	CAPACITOR, CERAMIC (TEMP. COMPENSATE), 82P 50V J NP0	
DIODEs					
		D401	0DS113309AA	DIODE, SWITCHING, 1SS133, TP, ROHM, KOREA DO34 90V	
		D501	0DS113309AA	DIODE, SWITCHING, 1SS133, TP, ROHM, KOREA DO34 90V	
		D502	0DS113309AA	DIODE, SWITCHING, 1SS133, TP, ROHM, KOREA DO34 90V	
		D701	0DS113309AA	DIODE, SWITCHING, 1SS133, TP, ROHM, KOREA DO34 90V	
		D702	0DS113309AA	DIODE, SWITCHING, 1SS133, TP, ROHM, KOREA DO34 90V	
		D703	0DR400500AA	DIODE, RECTIFIER, SB40-05J BK SANYO TO-220ML 50V 4A	
		D704	0DD300000AB	DIODE, RECTIFIER, FMP-3FU BK SANKEN TO3PF 1500V 5A	
		D705	0DR140059DA	DIODE, RECTIFIER, 1N4005TB52 TP LITEON DO41 600V 1A 40A	
	or	D705	0DD400509AA	DIODE, RECTIFIER, 1N4005 GP TP G.I DO204AL 600V	
		D706	0DR359150AA	DIODE, RECTIFIER, BY359F-1500 BK PHILIPS SOD100 1500V	
		D707	0DD200009AJ	DIODE, RECTIFIER, RL2Z V(1) TP SANKEN A-TMD 200V 2A	
		D708	0DR100009EA	DIODE, RECTIFIER, RGP10G[CHN] TP G.I DO204AL 400V 1A	
		D711	0DS113309AA	DIODE, SWITCHING, 1SS133, TP, ROHM, KOREA DO34 90V	

*S	*AL	LOC. NO.	PART NO.	DESCRIPTION / SPECIFICATION	REMARK
		D712	0DR100009EA	DIODE, RECTIFIER, RGP10G[CHN] TP G.I DO204AL 400V	
		D713	0DR100009DB	DIODE, RECTIFIER, RGP10D[CHN] TP G.I DO204AL 200V 1A	
		D714	0DD400709CB	DIODE, RECTIFIER, UF4007 TP G.I DO204AL 1000V 1A 30A	
		D715	0DS113309AA	DIODE, SWITCHING, 1SS133, TP, ROHM, KOREA DO34 90V	
		D716	0DR140059DA	DIODE, RECTIFIER, 1N4005TB52 TP LITEON DO41 600V 1A 40A	
	or	D716	0DD400509AA	DIODE, RECTIFIER, 1N4005 GP TP G.I DO204AL 600V	
		D717	0DR140059DA	DIODE, RECTIFIER, 1N4005TB52 TP LITEON DO41 600V 1A 40A	
	or	D717	0DD400509AA	DIODE, RECTIFIER, 1N4005 GP TP G.I DO204AL 600V	
		D718	0DR140059DA	DIODE, RECTIFIER, 1N4005TB52 TP LITEON DO41 600V 1A 40A	
	or	D718	0DD400509AA	DIODE, RECTIFIER, 1N4005 GP TP G.I DO204AL 600V	
		D723	0DS113309AA	DIODE, SWITCHING, 1SS133, TP, ROHM, KOREA DO34 90V	
		D730	0DS113309AA	DIODE, SWITCHING, 1SS133, TP, ROHM, KOREA DO34 90V	
		D731	0DS113309AA	DIODE, SWITCHING, 1SS133, TP, ROHM, KOREA DO34 90V	
		D732	0DR140059DA	DIODE, RECTIFIER, 1N4005TB52 TP LITEON DO41 600V 1A	
	or	D732	0DD400509AA	DIODE, RECTIFIER, 1N4005 GP TP G.I DO204AL 600V	
		D734	0DS113309AA	DIODE, SWITCHING, 1SS133, TP, ROHM, KOREA DO34 90V	
		D735	0DS113309AA	DIODE, SWITCHING, 1SS133, TP, ROHM, KOREA DO34 90V	
		D736	0DS113309AA	DIODE, SWITCHING, 1SS133, TP, ROHM, KOREA DO34 90V	
		D737	0DS113309AA	DIODE, SWITCHING, 1SS133, TP, ROHM, KOREA DO34 90V	
		D738	0DS113309AA	DIODE, SWITCHING, 1SS133, TP, ROHM, KOREA DO34 90V	
		D801	0DS113309AA	DIODE, SWITCHING, 1SS133, TP, ROHM, KOREA DO34 90V	
		D802	0DS113309AA	DIODE, SWITCHING, 1SS133, TP, ROHM, KOREA DO34 90V	
		D803	0DR140059DA	DIODE, RECTIFIER, 1N4005TB52 TP LITEON DO41 600V 1A 40A	
	or	D803	0DD400509AA	DIODE, RECTIFIER, 1N4005 GP TP G.I DO204AL 600V	
		D804	0DR140059DA	DIODE, RECTIFIER, 1N4005TB52 TP LITEON DO41 600V 1A 40A	
	or	D804	0DD400509AA	DIODE, RECTIFIER, 1N4005 GP TP G.I DO204AL 600V	
		D805	0DR140059DA	DIODE, RECTIFIER, 1N4005TB52 TP LITEON DO41 600V 1A 40A	
	or	D805	0DD400509AA	DIODE, RECTIFIER, 1N4005 GP TP G.I DO204AL 600V	
		D807	0DS113309AA	DIODE, SWITCHING, 1SS133, TP, ROHM, KOREA DO34 90V	
	⚠	D901	0DR153999AB	DIODE, RECTIFIER, 1N5399GP TP G.I DO204AC 1000V 1.5A	
	⚠	D902	0DR153999AB	DIODE, RECTIFIER, 1N5399GP TP G.I DO204AC 1000V 1.5A	
	⚠	D903	0DR153999AB	DIODE, RECTIFIER, 1N5399GP TP G.I DO204AC 1000V 1.5A	
	⚠	D904	0DR153999AB	DIODE, RECTIFIER, 1N5399GP TP G.I DO204AC 1000V 1.5A	
		D906	0DD400709CB	DIODE, RECTIFIER, UF4007 TP G.I DO204AL 1000V 1A 30A	
	⚠	D907	0DR100009DB	DIODE, RECTIFIER, RGP10D[CHN] TP G.I DO204AL 200V 1A	
		D910	0DS113309AA	DIODE, SWITCHING, 1SS133, TP, ROHM, KOREA DO34 90V	
		D911	0DS113309AA	DIODE, SWITCHING, 1SS133, TP, ROHM, KOREA DO34 90V	
		D919	0DR140059DA	DIODE, RECTIFIER, 1N4005TB52 TP LITEON DO41 600V 1A 40A	
	or	D919	0DD400509AA	DIODE, RECTIFIER, 1N4005 GP TP G.I DO204AL 600V	
		D920	0DD300009AC	DIODE, RECTIFIER, RU3AMV(1) TP SANKEN R-TMD 600V 1.5A	
		D921	0DS113309AA	DIODE, SWITCHING, 1SS133, TP, ROHM, KOREA DO34 90V	
		D922	0DD200009AH	DIODE, RECTIFIER, RU2AMV(1) TP SANKEN R-TMD 600V 1.1A	
		D923	0DR100009DB	DIODE, RECTIFIER, RGP10D[CHN] TP G.I DO204AL 200V 1A	
		D924	0DD540200AA	DIODE, RECTIFIER, UF5402 (19C2-409) BK G.I DO201AD 200V	
		D926	0DD150009CB	DIODE, RECTIFIER, RGP15D TP G.I DO204AC 200V 1.5A 50A	
		D928	0DS113309AA	DIODE, SWITCHING, 1SS133, TP, ROHM, KOREA DO34 90V	

MODEL: S/W775N, S/W775C				DATE: 1998.12.23.	
*S	*AL	LOC. NO.	PART NO.	DESCRIPTION / SPECIFICATION	REMARK
		D929	0DS113309AA	DIODE, SWITCHING, 1SS133, TP, ROHM, KOREA DO34 90V	
		D931	0DS113309AA	DIODE, SWITCHING, 1SS133, TP, ROHM, KOREA DO34 90V	
		ZD401	0DZ560009CE	DIODE, ZENER, MTZJ5.6B TP ROHM-K DO34 500MW 5.6V	
		ZD402	0DZ560009CE	DIODE, ZENER, MTZJ5.6B TP ROHM-K DO34 500MW 5.6V	
		ZD403	0DZ560009CE	DIODE, ZENER, MTZJ5.6B TP ROHM-K DO34 500MW 5.6V	
		ZD404	0DZ560009CE	DIODE, ZENER, MTZJ5.6B TP ROHM-K DO34 500MW 5.6V	
		ZD405	0DZ560009CE	DIODE, ZENER, MTZJ5.6B TP ROHM-K DO34 500MW 5.6V	
		ZD406	0DZ560009CE	DIODE, ZENER, MTZJ5.6B TP ROHM-K DO34 500MW 5.6V	
		ZD407	0DZ560009CE	DIODE, ZENER, MTZJ5.6B TP ROHM-K DO34 500MW 5.6V	
		ZD408	0DZ560009CE	DIODE, ZENER, MTZJ5.6B TP ROHM-K DO34 500MW 5.6V	
		ZD409	0DZ560009CE	DIODE, ZENER, MTZJ5.6B TP ROHM-K DO34 500MW 5.6V	
		ZD410	0DZ560009CE	DIODE, ZENER, MTZJ5.6B TP ROHM-K DO34 500MW 5.6V	
		ZD704	0DZ180009AG	DIODE, ZENER, MTZJ18B TP ROHM-K DO34 500MW 18V 5MA	
		ZD705	0DZ510009AB	DIODE, ZENER, MTZ5.1B TP ROHM-K DO34 500MW 5.1V 20MA	
		ZD706	0DZ180009AG	DIODE, ZENER, MTZJ18B TP ROHM-K DO34 500MW 18V 5MA	
		ZD801	0DZ180009AG	DIODE, ZENER, MTZJ18B TP ROHM-K DO34 500MW 18V 5MA	
		ZD802	0DZ560009CE	DIODE, ZENER, MTZJ5.6B TP ROHM-K DO34 500MW 5.6V 5MA	
		ZD803	0DZ620009BB	DIODE, ZENER, MTZJ6.2B TP ROHM-K DO34 0.5W 6.2V 5MA	
ICs					
		IC401	0IZZTSZ027A	IC[HYBRID], CB775 MICOM ASSY, (1)CB775 MICOM ASSY	
		IC402	0ISG240860A	IC, SGS-THOMSON, M24C08-BN6 8DIP BK 8K SERIAL IIC BUS	
	or	IC402	0IAL240800A	IC, ATMEL, AT24C08, 8D EEPROM(8K, IIC)	
		IC601	0IPH486650A	IC, PHILIPS, TDA4866/V5 SIL9P BK VERTICAL DEFLECTION IC	
		IC701	0IPH485600A	IC, PHILIPS, TDA4856 SDIP32 BK IIC DEFLECTION CONT. IC	
		IC901	0ISK665413B	IC, SANKEN, STR-F6654A[LF1351] 5P BK SWITCHING	
⚠		IC902	0ILI817000E	IC, LITEON, LTV-817M B 4P BK PHOTO COUPLER CTR(130-260)	
⚠	or	IC902	0ISH123200B	IC, LITEON, LTV-817M B 4P BK PHOTO COUPLER CTR(130-260)	
		IC921	0IKE431000B	IC, SHARP, PC123 FY2	
		IC923	0ISS780500F	IC, SAMSUNG ELECTRONICS, KA7805	
		IC925	0ISS781200F	IC, SAMSUNG ELECTRONICS, KA7812	
COILS & CORES					
		L702	150-518N	COIL, CHOKE, DR14*20 180UH 0.12*25MM 57.5T	
		L703	150-L05N	COIL, LINEARITY, DR14*15 14*6T 5.6UH 0.12*30MM 17.5T	
		L704	125-155K	CORE (CIRC),BEAD, BFS3550A0FG SAMWHA 3.5*5.0MM	
		L705	150-985K	COIL, CHOKE, DR14*20 2.8MH 0.35MM 235.5T D/D CHOKE	
⚠		L901	6200TLT002A	FILTER(CIRC), LINE, RING 19*6*13H 1.0MH 0.5MM 22T CB770	
TRANSISTORS					
		Q401	0TR945009AA	TRANSISTOR, KSC945C-Y TP SAMSUNG TO92 NPN EPI	
	or	Q401	0TR319809AA	TRANSISTOR, KTC3198-Y(KTC1815) TP, KEC	
		Q501	0TR471009AA	TRANSISTOR, KSD471AC-Y TP SAMSUNG TO92 NPN	
	or	Q501	0TR320209AA	TRANSISTOR, KTC3202-TP-Y (KTC1959), KEC	
		Q502	0TR564009AB	TRANSISTOR, KSB564AC-YTA TP SANSUNG TO92 PNP	
	or	Q502	0TR127009AA	TRANSISTOR, KTA1270-Y(KTA562TM), TP, KEC	

*S	*AL	LOC. NO.	PART NO.	DESCRIPTION / SPECIFICATION	REMARK
		Q503	0TR564009AB	TRANSISTOR, KSB564AC-YTA TP SANSUNG TO92 PNP	
	or	Q503	0TR127009AA	TRANSISTOR, KTA1270-Y(KTA562TM), TP, KEC	
		Q504	0TR945009AA	TRANSISTOR, KSC945C-Y TP SANSUNG TO92 NPN EPI.	
	or	Q504	0TR319809AA	TRANSISTOR, KTC3198-Y(KTC1815) TP, KEC	
		Q601	0TR114009AB	TRANSISTOR, DTC114ES TP ROHM-K SPT NPN	
		Q602	0TR928009AB	TRANSISTOR, KSA928A-Y TP SANSUNG TO92L PNP	
	or	Q602	0TR127309AA	TRANSISTOR, KTA1273-Y(KTA966A) TP KEC	
		Q603	0TR114009AB	TRANSISTOR, DTC114ES TP ROHM-K SPT NPN	
		Q704	0TR945009AA	TRANSISTOR, KSC945C-Y TP SANSUNG TO92 NPN EPI.	
	or	Q704	0TR319809AA	TRANSISTOR, KTC3198-Y(KTC1815) TP, KEC	
		Q705	0TR200009AB	TRANSISTOR, KTC200-Y TP KEC TO92 NPN	
		Q706	0TR252700AB	TRANSISTOR, BU2527AX BK PHILIPS SOT339 H-OUT TR	
		Q707	0TR564009AB	TRANSISTOR, KSB564AC-YTA TP SANSUNG TO92 PNP	
	or	Q707	0TR127009AA	TRANSISTOR, KTA1270-Y(KTA562TM), TP, KEC	
		Q708	0TR564009AB	TRANSISTOR, KSB564AC-YTA TP SANSUNG TO92 PNP	
		Q709	0TR141300AB	TRANSISTOR, KTD1413 BK KEC TO220IS NPN	
		Q710	0TR130050BA	TRANSISTOR, KSE13005F-A BK SANSUNG TO220 NPN	
		Q711	0TF650000AA	FET, IRF650A BK SANSUNG 200V 25A TO220	
		Q712	0TF124000AB	FET, FS12KMA-4A BK MITSUBISHI 200V 12A TO220FN	
	or	Q712	0TF630000CA	FET, IRFS630A BK SANSUNG 200V 6.5A	
		Q713	0TF124000AB	FET, FS12KMA-4A BK MITSUBISHI 200V 12A TO220FN	
	or	Q713	0TF630000CA	FET, IRFS630A BK SANSUNG 200V 6.5A	
		Q714	0TR945009AA	TRANSISTOR, KSC945C-Y TP SANSUNG TO92 NPN EPI.	
	or	Q714	0TR319809AA	TRANSISTOR, KTC3198-Y(KTC1815) TP, KEC	
		Q715	0TR945009AA	TRANSISTOR, KSC945C-Y TP SANSUNG TO92 NPN EPI.	
	or	Q715	0TR319809AA	TRANSISTOR, KTC3198-Y(KTC1815) TP, KEC	
		Q716	0TR945009AA	TRANSISTOR, KSC945C-Y TP SANSUNG TO92 NPN EPI.	
	or	Q716	0TR319809AA	TRANSISTOR, KTC3198-Y(KTC1815) TP, KEC	
		Q717	0TR471009AA	TRANSISTOR, KSD471AC-Y TP SANSUNG TO92 NPN	
	or	Q717	0TR320209AA	TRANSISTOR, KTC3202-TP-Y (KTC1959), KEC	
		Q718	0TR564009AB	TRANSISTOR, KSB564AC-YTA TP SANSUNG TO92 PNP	
	or	Q718	0TR127009AA	TRANSISTOR, KTA1270-Y(KTA562TM), TP, KEC	
		Q719	0TF963000BA	FET, SFS9630 BK SANSUNG -200V -4.4A TO220	
		Q720	0TR945009AA	TRANSISTOR, KSC945C-Y TP SANSUNG TO92 NPN EPI.	
	or	Q720	0TR319809AA	TRANSISTOR, KTC3198-Y(KTC1815) TP, KEC	
		Q721	0TR945009AA	TRANSISTOR, KSC945C-Y TP SANSUNG TO92 NPN EPI.	
	or	Q721	0TR319809AA	TRANSISTOR, KTC3198-Y(KTC1815) TP, KEC	
		Q722	0TR945009AA	TRANSISTOR, KSC945C-Y TP SANSUNG TO92 NPN EPI.	
	or	Q722	0TR319809AA	TRANSISTOR, KTC3198-Y(KTC1815) TP, KEC	
		Q723	0TR564009AB	TRANSISTOR, KSB564AC-YTA TP SANSUNG TO92 PNP	
	or	Q723	0TR127009AA	TRANSISTOR, KTA1270-Y(KTA562TM), TP, KEC	
		Q724	0TR564009AB	TRANSISTOR, KSB564AC-YTA TP SANSUNG TO92 PNP	
	or	Q724	0TR127009AA	TRANSISTOR, KTA1270-Y(KTA562TM), TP, KEC	
		Q725	0TR564009AB	TRANSISTOR, KSB564AC-YTA TP SANSUNG TO92 PNP	
	or	Q725	0TR127009AA	TRANSISTOR, KTA1270-Y(KTA562TM), TP, KEC	
		Q726	0TR114009AB	TRANSISTOR, DTC114ES TP ROHM-K SPT NPN	

*S	*AL	LOC. NO.	PART NO.	DESCRIPTION / SPECIFICATION	REMARK
		Q729	0TR114009AB	TRANSISTOR, DTC114ES TP ROHM-K SPT NPN	
		Q730	0TR564009AB	TRANSISTOR, KSB564AC-YTA TP SANSUNG TO92 PNP	
	or	Q730	0TR127009AA	TRANSISTOR, KTA1270-Y(KTA562TM), TP, KEC	
		Q731	0TR945009AA	TRANSISTOR, KSC945C-Y TP SANSUNG TO92 NPN EPI.	
	or	Q731	0TR319809AA	TRANSISTOR, KTC3198-Y(KTC1815) TP, KEC	
		Q801	0TR114009AB	TRANSISTOR, DTC114ES TP ROHM-K SPT NPN	
		Q802	0TR101309CC	TRANSISTOR, KSA1013-YTA TP SANSUNG TO92L PNP	
	or	Q802	0TR127509AC	TRANSISTOR, KTA1275-Y(KTA1013) TP, KEC	
		Q803	0TR231009AA	TRANSISTOR, KSC2310-Y TP SANSUNG TO92L NPN	
	or	Q803	0TR302609AB	TRANSISTOR, KTC3206-Y, TP(KTC2229), KEC	
		Q804	0TR910009AA	TRANSISTOR, KSA910-YTA TP SANSUNG TO92L PNP	
	or	Q804	0TR102409AB	TRANSISTOR, KTA1024-Y(KTA949) TP, KEC	
		Q805	0TR910009AA	TRANSISTOR, KSA910-YTA TP SANSUNG TO92L PNP	
	or	Q805	0TR102409AB	TRANSISTOR, KTA1024-Y(KTA949) TP, KEC	
		Q806	0TR945009AA	TRANSISTOR, KSC945C-Y TP SANSUNG TO92 NPN EPI.	
	or	Q806	0TR319809AA	TRANSISTOR, KTC3198-Y(KTC1815) TP, KEC	
		Q807	0TR114009AB	TRANSISTOR, DTC114ES TP ROHM-K SPT NPN	
		Q808	0TR231009AA	TRANSISTOR, KSC2310-Y TP SANSUNG TO92L NPN	
	or	Q808	0TR302609AB	TRANSISTOR, KTC3206-Y, TP(KTC2229), KEC	
		Q920	0TR233009AA	TRANSISTOR, KSC2330-O TP SANSUNG TO92L NPN	
	or	Q920	0TR320709AA	TRANSISTOR, KTC3270, TP(KTC2482), KEC	
		Q921	0TR945009AA	TRANSISTOR, KSC945C-Y TP SANSUNG TO92 NPN EPI.	
	or	Q921	0TR319809AA	TRANSISTOR, KTC3198-Y(KTC1815) TP, KEC	
		Q922	0TR928009AB	TRANSISTOR, KSA928A-Y TP SANSUNG TO92L PNP	
	or	Q922	0TR127309AA	TRANSISTOR, KTA1273-Y(KTA966A) TP KEC	
		Q923	0TR945009AA	TRANSISTOR, KSC945C-Y TP SANSUNG TO92 NPN EPI.	
	or	Q923	0TR319809AA	TRANSISTOR, KTC3198-Y(KTC1815) TP, KEC	
		Q924	0TR233009AA	TRANSISTOR, KSC2330-O TP SANSUNG TO92L NPN	
	or	Q924	0TR320709AA	TRANSISTOR, KTC3270, TP(KTC2482), KEC	
		Q925	0TR928009AB	TRANSISTOR, KSA928A-Y TP SANSUNG TO92L PNP	
	or	Q925	0TR127309AA	TRANSISTOR, KTA1273-Y(KTA966A) TP KEC	
		Q926	0TR945009AA	TRANSISTOR, KSC945C-Y TP SANSUNG TO92 NPN EPI.	
	or	Q926	0TR319809AA	TRANSISTOR, KTC3198-Y(KTC1815) TP, KEC	
		Q928	0TR114009AB	TRANSISTOR, DTC114ES TP ROHM-K SPT NPN	
		Q929	0TR114009AB	TRANSISTOR, DTC114ES TP ROHM-K SPT NPN	
RESISTORS					
		R401	0RD1000Q609	RESISTOR, FIXED CARBON FILM, 100 1/4W(3 5% TA52	
		R402	0RD1001Q609	RESISTOR, FIXED CARBON FILM, 1K 1/4W(3 5% TA52	
		R403	0RD1002Q609	RESISTOR, FIXED CARBON FILM, 10K 1/4W(3 5% TA52	
		R404	0RD4701Q609	RESISTOR, FIXED CARBON FILM, 4.70K 1/4W(3 5% TA52	
		R405	0RD2001Q609	RESISTOR, FIXED CARBON FILM, 2K 1/4W(3 5% TA52	
		R406	0RD5601Q609	RESISTOR, FIXED CARBON FILM, 5.60K 1/4W(3 5% TA52	
		R407	0RD3301Q609	RESISTOR, FIXED CARBON FILM, 3.30K 1/4W(3 5% TA52	
		R408	0RD1001Q609	RESISTOR, FIXED CARBON FILM, 1K 1/4W(3 5% TA52	
		R409	0RD1801Q609	RESISTOR, FIXED CARBON FILM, 1.80K 1/4W(3 5% TA52	

*S	*AL	LOC. NO.	PART NO.	DESCRIPTION / SPECIFICATION	REMARK
		R410	0RD1801Q609	RESISTOR, FIXED CARBON FILM, 1.80K 1/4W(3 5% TA52	
		R411	0RD4701Q609	RESISTOR, FIXED CARBON FILM, 4.70K 1/4W(3 5% TA52	
		R413	0RD4701Q609	RESISTOR, FIXED CARBON FILM, 4.70K 1/4W(3 5% TA52	
		R414	0RD4701Q609	RESISTOR, FIXED CARBON FILM, 4.70K 1/4W(3 5% TA52	
		R421	0RD4701Q609	RESISTOR, FIXED CARBON FILM, 4.70K 1/4W(3 5% TA52	
		R422	0RD4701Q609	RESISTOR, FIXED CARBON FILM, 4.70K 1/4W(3 5% TA52	
		R423	0RD5601Q609	RESISTOR, FIXED CARBON FILM, 5.60K 1/4W(3 5% TA52	
		R424	0RD1000Q609	RESISTOR, FIXED CARBON FILM, 100 1/4W(3 5% TA52	
		R425	0RD4701Q609	RESISTOR, FIXED CARBON FILM, 4.70K 1/4W(3 5% TA52	
		R427	0RD5602Q609	RESISTOR, FIXED CARBON FILM, 56K 1/4W(3 5% TA52	
		R428	0RD1003Q609	RESISTOR, FIXED CARBON FILM, 100K 1/4W(3 5% TA52	
		R430	0RD4701Q609	RESISTOR, FIXED CARBON FILM, 4.70K 1/4W(3 5% TA52	
		R431	0RD4701Q609	RESISTOR, FIXED CARBON FILM, 4.70K 1/4W(3 5% TA52	
		R432	0RD5602Q609	RESISTOR, FIXED CARBON FILM, 56K 1/4W(3 5% TA52	
		R434	0RD0332Q609	RESISTOR, FIXED CARBON FILM, 33 1/4W(3 5% TA52	
		R435	0RD4701Q609	RESISTOR, FIXED CARBON FILM, 4.70K 1/4W(3 5% TA52	
		R436	0RD1001Q609	RESISTOR, FIXED CARBON FILM, 1K 1/4W(3 5% TA52	
		R437	0RD5100Q609	RESISTOR, FIXED CARBON FILM, 510 1/4W(3 5% TA52	
		R438	0RD5100Q609	RESISTOR, FIXED CARBON FILM, 510 1/4W(3 5% TA52	
		R501	0RD0471A609	RESISTOR, FIXED CARBON FILM, 4.7 OHM 1/2 W (7.0) 5% TA52	
		R502	0RD0202A609	RESISTOR, FIXED CARBON FILM, 20 OHM 1/2 W (7.0) 5% TA52	
		R503	0RD8201Q609	RESISTOR, FIXED CARBON FILM, 8.20K 1/4W(3 5% TA52	
		R504	0RD1500Q609	RESISTOR, FIXED CARBON FILM, 150 1/4W(3 5% TA52	
		R505	0RD2201Q609	RESISTOR, FIXED CARBON FILM, 2.20K 1/4W(3 5% TA52	
		R506	0RD1001Q609	RESISTOR, FIXED CARBON FILM, 1K 1/4W(3 5% TA52	
		R507	0RD1601Q609	RESISTOR, FIXED CARBON FILM, 1.60K 1/4W(3 5% TA52	
		R508	0RD1001Q609	RESISTOR, FIXED CARBON FILM, 1K 1/4W(3 5% TA52	
		R601	0RD1001Q609	RESISTOR, FIXED CARBON FILM, 1K 1/4W(3 5% TA52	
		R602	0RD1001Q609	RESISTOR, FIXED CARBON FILM, 1K 1/4W(3 5% TA52	
		R603	0RN0390G609	RESISTOR, FIXED METAL FILM, 0.39 1/4W 5 TA52	
		R604	0RD0101A609	RESISTOR, FIXED CARBON FILM, 1 OHM 1/2 W (7.0) 5% TA52	
		R605	0RD0102A609	RESISTOR, FIXED CARBON FILM, 10 OHM 1/2 W (7.0) 5% TA52	
		R606	0RD1000A609	RESISTOR, FIXED CARBON FILM, 100 OHM 1/2 W (7.0) 5%	
		R607	0RN5101F409	RESISTOR, FIXED METAL FILM, 5.10K 1/6W 1% TA52	
		R608	0RD2700A609	RESISTOR, FIXED CARBON FILM, 270 OHM 1/2 W (7.0) 5%	
		R609	0RD1001Q609	RESISTOR, FIXED CARBON FILM, 1K 1/4W(3 5% TA52	
		R610	0RD1000Q609	RESISTOR, FIXED CARBON FILM, 100 1/4W(3 5% TA52	
		R611	0RD9100A609	RESISTOR, FIXED CARBON FILM, 910 OHM 1/2 W (7.0) 5%	
		R612	0RN5101F409	RESISTOR, FIXED METAL FILM, 5.10K 1/6W 1% TA52	
		R701	0RD4702Q609	RESISTOR, FIXED CARBON FILM, 47K 1/4W(3 5% TA52	
		R702	0RD4702Q609	RESISTOR, FIXED CARBON FILM, 47K 1/4W(3 5% TA52	
		R703	0RD1202Q609	RESISTOR, FIXED CARBON FILM, 12K 1/4W(3 5% TA52	
		R704	0RD4701Q609	RESISTOR, FIXED CARBON FILM, 4.70K 1/4W(3 5% TA52	
		R705	0RD2402Q609	RESISTOR, FIXED CARBON FILM, 24K 1/4W(3 5% TA52	
		R706	0RN2701F409	RESISTOR, FIXED METAL FILM, 2.70K 1/6W 1% TA52	
		R707	0RN1801F409	RESISTOR, FIXED METAL FILM, 1.80K 1/6W 1% TA52	

*S	*AL	LOC. NO.	PART NO.	DESCRIPTION / SPECIFICATION	REMARK
		R708	0RN1101F409	RESISTOR, FIXED METAL FILM, 1.10K 1/6W 1% TA52	
		R709	0RD2202Q609	RESISTOR, FIXED CARBON FILM, 22K 1/4W(3 5% TA52	
		R710	0RD1000Q609	RESISTOR, FIXED CARBON FILM, 100 1/4W(3 5% TA52	
		R711	0RD1000Q609	RESISTOR, FIXED CARBON FILM, 100 1/4W(3 5% TA52	
		R712	0RD5602Q609	RESISTOR, FIXED CARBON FILM, 56K 1/4W(3 5% TA52	
		R713	0RD4301Q609	RESISTOR, FIXED CARBON FILM, 4.30K 1/4W(3 5% TA52	
		R714	0RD1502Q609	RESISTOR, FIXED CARBON FILM, 15K 1/4W(3 5% TA52	
		R715	0RD3002Q609	RESISTOR, FIXED CARBON FILM, 30K 1/4W(3 5% TA52	
		R716	0RD1002Q609	RESISTOR, FIXED CARBON FILM, 10K 1/4W(3 5% TA52	
		R717	0RD1001Q609	RESISTOR, FIXED CARBON FILM, 1K 1/4W(3 5% TA52	
		R718	0RD5102Q509	RESISTOR, FIXED CARBON FILM, 51K OHM 1/4 W (3.4) 2%	
		R719	0RN3601F409	RESISTOR, FIXED METAL FILM, 3.6K 1/6W 1 TA52	
		R720	0RD0471Q609	RESISTOR, FIXED CARBON FILM, 4.70 1/4W(3 5% TA52	
		R721	0RD2201Q609	RESISTOR, FIXED CARBON FILM, 2.20K 1/4W(3 5% TA52	
		R722	0RD1001Q609	RESISTOR, FIXED CARBON FILM, 1K 1/4W(3 5% TA52	
		R723	0RD1001Q609	RESISTOR, FIXED CARBON FILM, 1K 1/4W(3 5% TA52	
		R724	0RD1001Q609	RESISTOR, FIXED CARBON FILM, 1K 1/4W(3 5% TA52	
		R725	0RD0102Q609	RESISTOR, FIXED CARBON FILM, 10 1/4W(3 5% TA52	
		R726	0RX9102J609	RESISTOR, SMALL FIX METAL FILM OXIDE, 91K OHM 1 W 5%	
		R727	0RX0432K607	RESISTOR, SMALL FIX METAL FILM OXIDE, 43 OHM 2 W 5%	
		R728	0RD1001Q609	RESISTOR, FIXED CARBON FILM, 1K 1/4W(3 5% TA52	
		R729	0RD1002Q609	RESISTOR, FIXED CARBON FILM, 10K 1/4W(3 5% TA52	
		R730	0RD3000A609	RESISTOR, FIXED CARBON FILM, 300 OHM 1/2 W (7.0) 5%	
		R731	0RD0271A609	RESISTOR, FIXED CARBON FILM, 2.7 OHM 1/2 W (7.0) 5%	
		R732	0RD0472A609	RESISTOR, FIXED CARBON FILM, 47 OHM 1/2 W (7.0) 5%	
		R733	0RD6801Q609	RESISTOR, FIXED CARBON FILM, 6.80K 1/4W(3 5% TA52	
		R734	0RD1802Q609	RESISTOR, FIXED CARBON FILM, 18K 1/4W(3 5% TA52	
		R735	0RD1001Q609	RESISTOR, FIXED CARBON FILM, 1K 1/4W(3 5% TA52	
		R736	0RN1003F409	RESISTOR, FIXED METAL FILM, 100K 1/6W 1 TA52	
		R737	0RD1002Q609	RESISTOR, FIXED CARBON FILM, 10K 1/4W(3 5% TA52	
		R738	0RN1503F409	RESISTOR, FIXED METAL FILM, 150K 1/6W 1% TA52	
		R739	0RN2202F409	RESISTOR, FIXED METAL FILM, 22K 1/6W 1% TA52	
		R740	0RN1503F409	RESISTOR, FIXED METAL FILM, 150K 1/6W 1% TA52	
		R741	0RD8202A609	RESISTOR, FIXED CARBON FILM, 82K OHM 1/2 W (7.0) 5%	
		R742	0RD3002Q609	RESISTOR, FIXED CARBON FILM, 30K 1/4W(3 5% TA52	
		R743	0RD8200Q609	RESISTOR, FIXED CARBON FILM, 820 1/4W(3 5% TA52	
		R744	0RD2200A609	RESISTOR, FIXED CARBON FILM, 220 OHM 1/2 W (7.0) 5%	
		R745	0RD4702Q609	RESISTOR, FIXED CARBON FILM, 47K 1/4W(3 5% TA52	
		R746	0RD2201Q609	RESISTOR, FIXED CARBON FILM, 2.20K 1/4W(3 5% TA52	
		R747	0RD3001Q609	RESISTOR, FIXED CARBON FILM, 3K 1/4W(3 5% TA52	
		R748	0RD4702Q609	RESISTOR, FIXED CARBON FILM, 47K 1/4W(3 5% TA52	
		R749	0RD2201Q609	RESISTOR, FIXED CARBON FILM, 2.20K 1/4W(3 5% TA52	
		R750	0RD3001Q609	RESISTOR, FIXED CARBON FILM, 3K 1/4W(3 5% TA52	
		R751	0RD4702Q609	RESISTOR, FIXED CARBON FILM, 47K 1/4W(3 5% TA52	
		R752	0RD2201Q609	RESISTOR, FIXED CARBON FILM, 2.20K 1/4W(3 5% TA52	
		R753	0RD3001Q609	RESISTOR, FIXED CARBON FILM, 3K 1/4W(3 5% TA52	

*S	*AL	LOC. NO.	PART NO.	DESCRIPTION / SPECIFICATION	REMARK
		R754	ORD1001Q609	RESISTOR, FIXED CARBON FILM, 1K 1/4W(3 5% TA52	
		R756	ORD0472Q609	RESISTOR, FIXED CARBON FILM, 47 1/4W(3 5% TA52	
		R757	ORD0472Q609	RESISTOR, FIXED CARBON FILM, 47 1/4W(3 5% TA52	
		R758	ORD5601Q609	RESISTOR, FIXED CARBON FILM, 5.60K 1/4W(3 5% TA52	
		R759	ORN0270H609	RESISTOR, FIXED METAL FILM, 0.27 1/2W 5 TA52	
		R760	ORD5601Q609	RESISTOR, FIXED CARBON FILM, 5.60K 1/4W(3 5% TA52	
		R761	ORD1502Q609	RESISTOR, FIXED CARBON FILM, 15K 1/4W(3 5% TA52	
		R762	ORD1001Q609	RESISTOR, FIXED CARBON FILM, 1K 1/4W(3 5% TA52	
		R763	ORD3001Q609	RESISTOR, FIXED CARBON FILM, 3K 1/4W(3 5% TA52	
		R764	ORD1002Q609	RESISTOR, FIXED CARBON FILM, 10K 1/4W(3 5% TA52	
		R765	ORD1002Q609	RESISTOR, FIXED CARBON FILM, 10K 1/4W(3 5% TA52	
		R766	ORD8202Q609	RESISTOR, FIXED CARBON FILM, 82K 1/4W(3 5% TA52	
		R767	ORD2701Q609	RESISTOR, FIXED CARBON FILM, 2.70K 1/4W(3 5% TA52	
		R768	ORD3001Q609	RESISTOR, FIXED CARBON FILM, 3K 1/4W(3 5% TA52	
		R769	ORN6202F409	RESISTOR, FIXED METAL FILM, 62KOHM 1/6 W 1% TA52	
		R770	971-0016	WIRE, JUMP, TIN HDC 0.60H	
		R771	ORD1000Q609	RESISTOR, FIXED CARBON FILM, 100 1/4W(3 5% TA52	
		R772	ORD1001Q609	RESISTOR, FIXED CARBON FILM, 1K 1/4W(3 5% TA52	
		R773	ORD3002Q609	RESISTOR, FIXED CARBON FILM, 30K 1/4W(3 5% TA52	
△		R774	ORD3602Q609	RESISTOR, FIXED CARBON FILM, 36K 1/4W(3 5% TA52	
		R775	ORD8202Q609	RESISTOR, FIXED CARBON FILM, 82K 1/4W(3 5% TA52	
		R777	ORD2703A609	RESISTOR, FIXED CARBON FILM, 270K OHM 1/2 W (7.0) 5%	
		R778	ORD5603A609	RESISTOR, FIXED CARBON FILM, 560K OHM 1/2 W (7.0) 5%	
		R779	ORD4701Q609	RESISTOR, FIXED CARBON FILM, 4.70K 1/4W(3 5% TA52	
		R780	ORX9102J609	RESISTOR, SMALL FIX METAL FILM OXIDE, 91K OHM 1 W 5%	
		R781	ORD2403A609	RESISTOR, FIXED CARBON FILM, 240K OHM 1/2 W (7.0) 5%	
		R782	ORD2002A609	RESISTOR, FIXED CARBON FILM, 20K OHM 1/2 W (7.0) 5%	
		R783	ORD5103Q609	RESISTOR, FIXED CARBON FILM, 510K 1/4W(3 5% TA52	
		R784	ORD1000Q609	RESISTOR, FIXED CARBON FILM, 100 1/4W(3 5% TA52	
△		R785	ORD3000Q609	RESISTOR, FIXED CARBON FILM, 300 1/4W(3 5% TA52	
		R786	ORD5602Q609	RESISTOR, FIXED CARBON FILM, 56K 1/4W(3 5% TA52	
		R787	ORD8202Q609	RESISTOR, FIXED CARBON FILM, 82K 1/4W(3 5% TA52	
		R788	ORD6801Q609	RESISTOR, FIXED CARBON FILM, 6.80K 1/4W(3 5% TA52	
		R789	ORD1002Q609	RESISTOR, FIXED CARBON FILM, 10K 1/4W(3 5% TA52	
		R790	ORD1001Q609	RESISTOR, FIXED CARBON FILM, 1K 1/4W(3 5% TA52	
		R795	ORD2201Q609	RESISTOR, FIXED CARBON FILM, 2.20K 1/4W(3 5% TA52	
		R796	ORD1303A609	RESISTOR, FIXED CARBON FILM, 130K OHM 1/2 W (7.0) 5%	
		R797	ORD1001Q609	RESISTOR, FIXED CARBON FILM, 1K 1/4W(3 5% TA52	
		R798	ORD1202Q609	RESISTOR, FIXED CARBON FILM, 12K 1/4W(3 5% TA52	
		R799	ORD5603A609	RESISTOR, FIXED CARBON FILM, 560K OHM 1/2 W (7.0) 5%	
		R801	ORD5601Q609	RESISTOR, FIXED CARBON FILM, 5.60K 1/4W(3 5% TA52	
		R802	ORD1002Q609	RESISTOR, FIXED CARBON FILM, 10K 1/4W(3 5% TA52	
		R803	ORD1003Q609	RESISTOR, FIXED CARBON FILM, 100K 1/4W(3 5% TA52	
		R804	ORD3002Q609	RESISTOR, FIXED CARBON FILM, 30K 1/4W(3 5% TA52	
		R805	ORD4700Q609	RESISTOR, FIXED CARBON FILM, 470 OHM 1/4 W (3.4) 5% TA52	
		R806	ORD1000Q609	RESISTOR, FIXED CARBON FILM, 100 1/4W(3 5% TA52	

MODEL: S/W775N, S/W775C				DATE: 1998.12.23.	
*S	*AL	LOC. NO.	PART NO.	DESCRIPTION / SPECIFICATION	REMARK
		R807	0RD1803Q609	RESISTOR, FIXED CARBON FILM, 180K 1/4W(3 5% TA52	
		R808	0RD1004Q609	RESISTOR, FIXED CARBON FILM, 1M OHM 1/4 W (3.4) 5% TA52	
		R809	0RD1003Q609	RESISTOR, FIXED CARBON FILM, 100K 1/4W(3 5% TA52	
		R810	0RD1002Q609	RESISTOR, FIXED CARBON FILM, 10K 1/4W(3 5% TA52	
		R811	0RD1503Q609	RESISTOR, FIXED CARBON FILM, 150K 1/4W(3 5% TA52	
		R812	0RD1004Q609	RESISTOR, FIXED CARBON FILM, 1M OHM 1/4 W (3.4) 5% TA52	
		R813	0RD5603Q609	RESISTOR, FIXED CARBON FILM, 560K 1/4W(3 5% TA52	
		R814	971-0016	WIRE, JUMP, TIN HDC 0.60H	
		R815	0RD4700Q609	RESISTOR, FIXED CARBON FILM, 470 OHM 1/4 W (3.4) 5%	
⚠		R816	0RN1102F409	RESISTOR, FIXED METAL FILM, 11K 1/6W 1% TA52	
		R817	0RD2001Q609	RESISTOR, FIXED CARBON FILM, 2K 1/4W(3 5% TA52	
⚠		R818	0RN1802F409	RESISTOR, FIX METAL FILM, 18K 1/6W 1% TA52	
		R820	0RD3001Q609	RESISTOR, FIXED CARBON FILM, 3K 1/4W(3 5% TA52	
		R821	0RD2002Q609	RESISTOR, FIXED CARBON FILM, 20K 1/4W(3 5% TA52	
		R822	0RD2201Q609	RESISTOR, FIXED CARBON FILM, 2.20K 1/4W(3 5% TA52	
		R823	0RD4700Q609	RESISTOR, FIXED CARBON FILM, 470 OHM 1/4 W (3.4) 5%	
⚠		R902	0RMZTWD001A	RESISTOR, CEMENT, 4.7 OHM 5 W 5% B RWR	
⚠		R903	0RD3302A609	RESISTOR, FIXED CARBON FILM, 33K OHM 1/2 W (7.0) 5%	
⚠		R904	0RD3302A609	RESISTOR, FIXED CARBON FILM, 33K OHM 1/2 W (7.0) 5%	
		R905	0RD4701Q609	RESISTOR, FIXED CARBON FILM, 4.70K 1/4W(3 5% TA52	
		R906	0RD1001Q609	RESISTOR, FIXED CARBON FILM, 1K 1/4W(3 5% TA52	
		R907	0RB0150J609	RESISTOR, FIX WIRE-WOUND PRECISION, 0.15 OHM 1W 5%	
		R908	0RD2001Q609	RESISTOR, FIXED CARBON FILM, 2K 1/4W(3 5% TA52	
		R909	0RD3003Q609	RESISTOR, FIXED CARBON FILM, 300K 1/4W(3 5% TA52	
		R910	0RD1003A609	RESISTOR, FIXED CARBON FILM, 100K OHM 1/2 W (7.0) 5%	
		R911	0RD1003A609	RESISTOR, FIXED CARBON FILM, 100K OHM 1/2 W (7.0) 5%	
		R912	180-465A	RESISTOR, CEMENT, 0.56 OHM 5W 5% B RWR	
		R913	0RN0390G609	RESISTOR, FIXED METAL FILM, 0.39 1/4W 5 TA52	
		R914	0RD1001Q609	RESISTOR, FIXED CARBON FILM, 1K 1/4W(3 5% TA52	
		R915	0RD6200Q609	RESISTOR, FIXED CARBON FILM, 620 1/4W(3 5% TA52	
		R916	0RD1002Q609	RESISTOR, FIXED CARBON FILM, 10K 1/4W(3 5% TA52	
		R918	0RD4701Q609	RESISTOR, FIXED CARBON FILM, 4.70K 1/4W(3 5% TA52	
		R919	0RD3003Q609	RESISTOR, FIXED CARBON FILM, 300K 1/4W(3 5% TA52	
		R921	0RD0182A609	RESISTOR, FIXED CARBON FILM, 18 OHM 1/2 W (7.0) 5% TA52	
		R922	0RD1501Q609	RESISTOR, FIXED CARBON FILM, 1.50K 1/4W(3 5% TA52	
⚠		R923	0RN7502G409	RESISTOR, FIXED METAL FILM, 75 KOHM 1/4 W 1% TA52	
⚠		R924	0RN7502G409	RESISTOR, FIXED METAL FILM, 75 KOHM 1/4 W 1% TA52	
		R925	0RN0220H609	RESISTOR, FIXED METAL FILM, 0.22 1/2W 5% TA52	
⚠		R926	0RN2201F409	RESISTOR, FIXED METAL FILM, 2.20K 1/6W 1% TA52	
		R927	0RN0220H609	RESISTOR, FIXED METAL FILM, 0.22 1/2W 5% TA52	
		R928	0RD1000Q609	RESISTOR, FIXED CARBON FILM, 100 1/4W(3 5% TA52	
		R929	0RX4700J609	RESISTOR, SMALL FIX METAL FILM OXIDE, 470 OHM 1 W 5%	
		R930	0RD4701Q609	RESISTOR, FIXED CARBON FILM, 4.70K 1/4W(3 5% TA52	
		R931	0RD1001Q609	RESISTOR, FIXED CARBON FILM, 1K 1/4W(3 5% TA52	
		R932	0RD1003Q609	RESISTOR, FIXED CARBON FILM, 100K 1/4W(3 5% TA52	
		R933	0RD1501Q609	RESISTOR, FIXED CARBON FILM, 1.50K 1/4W(3 5% TA52	

MODEL: S/W775N, S/W775C				DATE: 1998.12.23.	
*S	*AL	LOC. NO.	PART NO.	DESCRIPTION / SPECIFICATION	REMARK
		R934	ORD5603Q609	RESISTOR, FIXED CARBON FILM, 560K 1/4W(3 5% TA52	
		R935	ORD1001Q609	RESISTOR, FIXED CARBON FILM, 1K 1/4W(3 5% TA52	
		R936	ORD1503A609	RESISTOR, FIXED CARBON FILM, 150K OHM 1/2 W (7.0) 5%	
		R938	ORD5602Q609	RESISTOR, FIXED CARBON FILM, 56K 1/4W(3 5% TA52	
		R939	ORD0472Q609	RESISTOR, FIXED CARBON FILM, 47 1/4W(3 5% TA52	
△		VR701	180-035G	VOLUME, EVN-DJAA03B13 (MEC),1KB	
		VR901	180-035D	VOLUME, EVN-DJAA03B32 (MEC),300B	
OTHERS					
△		F901	131-040C	FUSE, TIME LAG, 3.15A 250V HBC UL/CSA TRIAD	
		P401	6602T20002J	WAFER, 35362-1010 MOLEX 2.0mm S/T	
		P401-P201	6631T20004A	CONNECTOR ASSY, 10P H-H 220MM UL1061 AWG 26 TWI	
		P402	6602T20002E	WAFER, 35362-0610 MOLEX 2.0mm S/T	
		P501	6602T25008B	WAFER, SMW250-03 YEONHO 2.5MM LOCK S/T	
		P701	366-112D	WAFER, BW-504LG BAE EUN 2.36mm S/T	
		P702	6602T20002P	WAFER, 35362-1510 MOLEX 2.0mm S/T	
		P702-P302	6631T20009A	CONNECTOR ASSY, 15P H-H 180MM UL1061 AWG 26 TWI CB770	
		P703	366-167A	WAFER, BW-501S BAE EUN 2.36mm H=17MM	
		P704	366-167A	WAFER, BW-501S BAE EUN 2.36mm H=17MM	
		P902	366-167A	WAFER, BW-501S BAE EUN 2.36mm H=17MM	
		P903	366-167A	WAFER, BW-501S BAE EUN 2.36mm H=17MM	
		PG1	302-987A	SHIELD, TERMINAL EARTH	
		PG2	302-987A	SHIELD, TERMINAL EARTH	
△		RL901	141-040A	RELAY, JW2HN-DC5V MATSUSHITA 250VAC 5A 5V 106MA	
△		SC901	6200TJB001D	FILTER(CIRC), EMI, 02ME4E2 DELTA 25MH BLACK	
		SG701	165-004A	SPARK GAP, AG20PT 152F-L3N/S-23 HANDOK RADIAL BULK	
△		T701	6174Z-1012B	FBT (FLY BACK TRANSFORMER), FMTC61	
		T702	6170TCZ002A	TRANSFORMER, HORIZONTAL DRIVER, EE2519,2.9MH D/FOCUS	
		T703	6170TCZ001A	TRANSFORMER, SMPS, H-DRIVE, EI2218, 3.8MH	
		T901	6170TMZ056A	TRANSFORMER, SMPS, EER4045 195UH 16PIN CB770 NY/JS .	
△		TH901	6322TB090AA	THERMISTOR, PTC, PT11P62D090Q290 DAEWOO +30%/-20%	
		WG2	387-P91A	CONNECTOR ASSY, UL1015 AWG22	
		X401	6202TTB001A	CRYSTAL, HC-49/U SUNNY E 6.000000MHZ 30PPM 16PF BK	
		CONN	6631T11005A	CONNECTOR ASSY, TCO OPEN LOOP WIRE (UL 101522 CS560)	
VIDEO BOARD					
CAPACITORS					
		C301	0CZZTFT001Z	CAPACITOR, ECQB1H104JM3 104J 50V TP5.0 MATSUSHITA	
		C302	0CE1076D618	CAPACITOR, AL.ELECTROLYTIC, 100M SMS 10V M FM5	
		C303	0CZZTFT001Z	CAPACITOR, ECQB1H104JM3 104J 50V TP5.0 MATSUSHITA	
		C306	0CZZTFT001X	CAPACITOR, ECQB1H683JM3 683J 50V TP5.0 MATSUSHITA	
	or	C306	181-288K	CAPACITOR, POLYESTER, MKT 100V 683JTR PHS26683	
		C307	0CH3104K946	CAPACITOR, CHIP[CERAMIC LD-LESS HD], 100000PF 50V Z	
		C308	0CE1076D618	CAPACITOR, AL.ELECTROLYTIC, 100M SMS 10V M FM5	
		C309	0CK2230K945	CAPACITOR, CERAMIC (HIGH DIELECTRIC), 0.022UF 50V Z	
		C310	0CN2230H949	CAPACITOR, TUBULAR(HIGH DIELEC), 22000P 25V Z FTA52	

*S	*AL	LOC. NO.	PART NO.	DESCRIPTION / SPECIFICATION	REMARK
		C311	0CK2230K945	CAPACITOR, CERAMIC (HIGH DIELECTRIC), 0.022UF 50V Z	
		C312	0CE1076F618	CAPACITOR, AL.ELECTROLYTIC, 100UF SMS 16V M TP(5)	
		C313	0CH3104K946	CAPACITOR, CHIP[CERAMIC LD-LESS HD], 100000PF 50V Z F	
		C314	0CH3104K946	CAPACITOR, CHIP[CERAMIC LD-LESS HD], 100000PF 50V Z F	
		C315	0CH3104K946	CAPACITOR, CHIP[CERAMIC LD-LESS HD], 100000PF 50V Z F	
		C316	0CH3104K946	CAPACITOR, CHIP[CERAMIC LD-LESS HD], 100000PF 50V Z F	
		C317	0CH3104K946	CAPACITOR, CHIP[CERAMIC LD-LESS HD], 100000PF 50V Z F	
		C318	0CE476CN618	CAPACITOR, AL.ELECTROLYTIC, 47UF SHL 100V M FL TP5	
		C319	181-288E	CAPACITOR, POLYESTER, MKT 100V 474JTR PHS 26474	
		C320	0CH3104K946	CAPACITOR, CHIP[CERAMIC LD-LESS HD], 100000PF 50V Z F	
		C321	0CE4766F618	CAPACITOR, AL.ELECTROLYTIC, 47U SMS 16V M FM5 TP5	
		C323	181-288E	CAPACITOR, POLYESTER, MKT 100V 474JTR PHS 26474	
		C324	181-288E	CAPACITOR, POLYESTER, MKT 100V 474JTR PHS 26474	
		C325	181-288E	CAPACITOR, POLYESTER, MKT 100V 474JTR PHS 26474	
		C327	181-288G	CAPACITOR, POLYESTER, MKT 100V 334JTR PHS26334	
		C329	0CK10301510	CAPACITOR, CERAMIC (HIGH DIELECTRIC), 0.01M 1KV	
		C330	0CK10301510	CAPACITOR, CERAMIC (HIGH DIELECTRIC), 0.01M 1KV	
		C331	0CC4700W405	CAPACITOR, CERAMIC (TEMP. COMPENSATE), 47PF 500V	
		C333	0CK2220K515	CAPACITOR, CERAMIC (HIGH DIELECTRIC), 2200P 50V	
		C334	0CK3320W515	CAPACITOR, CERAMIC (HIGH DIELECTRIC), 3300P 500V	
		C335	0CE336CP630	CAPACITOR, AL.ELECTROLYTIC, 33U SHL 160V M FM5	
		C336	0CK3320W515	CAPACITOR, CERAMIC (HIGH DIELECTRIC), 3300P 500V	
		C337	0CH3104K946	CAPACITOR, CHIP[CERAMIC LD-LESS HD], 100000PF 50V Z F	
		C339	0CH3104K946	CAPACITOR, CHIP[CERAMIC LD-LESS HD], 100000PF 50V Z F	
		C340	0CH3104K946	CAPACITOR, CHIP[CERAMIC LD-LESS HD], 100000PF 50V Z F	
		C341	0CH3104K946	CAPACITOR, CHIP[CERAMIC LD-LESS HD], 100000PF 50V Z F	
		C342	0CH3104K946	CAPACITOR, CHIP[CERAMIC LD-LESS HD], 100000PF 50V Z F	
		C343	181-288E	CAPACITOR, POLYESTER, MKT 100V 474JTR PHS 26474	
		C344	181-288E	CAPACITOR, POLYESTER, MKT 100V 474JTR PHS 26474	
		C348	181-288B	CAPACITOR, POLYESTER, MKT 100V 104JTR PHS26104	
		C350	0CH6221K416	CAPACITOR, CHIP[CERAMIC LD-LESS TC], 220PF 50V J NP0	
		C351	0CH6102K406	CAPACITOR, CHIP[CERAMIC LD-LESS TC], 1000PF 50V J SL	
		C352	0CH6102K406	CAPACITOR, CHIP[CERAMIC LD-LESS TC], 1000PF 50V J SL	
		C353	0CN1020K519	CAPACITOR, TUBULAR(HIGH DIELEC), 1000P 50V K B TA52	
		C354	0CK5610W515	CAPACITOR, CERAMIC (HIGH DIELECTRIC), 560P 500V K B	
		C355	0CK5610W515	CAPACITOR, CERAMIC (HIGH DIELECTRIC), 560P 500V K B	
		C356	0CK5610W515	CAPACITOR, CERAMIC (HIGH DIELECTRIC), 560P 500V K B	
		C357	0CE2266F618	CAPACITOR, AL.ELECTROLYTIC, 22M SMS 16V M FM5	
		C359	0CE2266F618	CAPACITOR, AL.ELECTROLYTIC, 22M SMS 16V M FM5	
		C370	0CH3104K946	CAPACITOR, CHIP[CERAMIC LD-LESS HD], 100000PF 50V Z F	
		C371	0CE1066N618	CAPACITOR, AL.ELECTROLYTIC, 10M SMS 100V M FM5 TP5	
		C372	0CN1040K949	CAPACITOR, TUBULAR(HIGH DIELEC), 0.1M 50V Z F TA52	
		C373	0CK1020W515	CAPACITOR, CERAMIC (HIGH DIELECTRIC), 1000P 500V	
		C374	181-288B	CAPACITOR, POLYESTER, MKT 100V 104JTR PHS26104	
		C375	0CK3320W515	CAPACITOR, CERAMIC (HIGH DIELECTRIC), 3300P 500V	

MODEL: S/W775N, S/W775C				DATE: 1998 .12. 23.	
*S	*AL	LOC. NO.	PART NO.	DESCRIPTION / SPECIFICATION	REMARK
DIODEs					
		D301	0DS113309AA	DIODE, SWITCHING, 1SS133, TP, ROHM, KOREA DO34 90V	
		D302	0DS113309AA	DIODE, SWITCHING, 1SS133, TP, ROHM, KOREA DO34 90V	
		D303	0DS113309AA	DIODE, SWITCHING, 1SS133, TP, ROHM, KOREA DO34 90V	
		D304	0DS113309AA	DIODE, SWITCHING, 1SS133, TP, ROHM, KOREA DO34 90V	
		D305	0DS113309AA	DIODE, SWITCHING, 1SS133, TP, ROHM, KOREA DO34 90V	
		D306	0DS113309AA	DIODE, SWITCHING, 1SS133, TP, ROHM, KOREA DO34 90V	
		D307	0DS113309AA	DIODE, SWITCHING, 1SS133, TP, ROHM, KOREA DO34 90V	
		D308	0DS113309AA	DIODE, SWITCHING, 1SS133, TP, ROHM, KOREA DO34 90V	
		D309	0DS113309AA	DIODE, SWITCHING, 1SS133, TP, ROHM, KOREA DO34 90V	
		D310	0DS113309AA	DIODE, SWITCHING, 1SS133, TP, ROHM, KOREA DO34 90V	
		D311	0DS113309AA	DIODE, SWITCHING, 1SS133, TP, ROHM, KOREA DO34 90V	
		D312	0DS113309AA	DIODE, SWITCHING, 1SS133, TP, ROHM, KOREA DO34 90V	
		D313	0DS113309AA	DIODE, SWITCHING, 1SS133, TP, ROHM, KOREA DO34 90V	
		D314	0DS113309AA	DIODE, SWITCHING, 1SS133, TP, ROHM, KOREA DO34 90V	
		D315	0DS113309AA	DIODE, SWITCHING, 1SS133, TP, ROHM, KOREA DO34 90V	
		D316	0DS113309AA	DIODE, SWITCHING, 1SS133, TP, ROHM, KOREA DO34 90V	
		D317	0DS113309AA	DIODE, SWITCHING, 1SS133, TP, ROHM, KOREA DO34 90V	
		D318	0DS113309AA	DIODE, SWITCHING, 1SS133, TP, ROHM, KOREA DO34 90V	
ICs					
		IC301	0IMO454520A	IC, MOTOROLA, LSC4545P2 16,DIP BK OSD	
		IC302	0IPH488600A	IC, PHILIPS, TDA4886 SDIP24 BK 120MHZ VIDEO PREAMP IC	
		IC303	0INS240700A	IC, NATIONAL SEMICONDUCTOR, LM2407T 11P BK MONO.	
		IC304	0ISS780800A	IC, SAMSUNG ELECTRONICS, KA7808 (KA7808C) REGULATOR	
COILs & COREs					
		L301	0LA1000K119	INDUCTOR, AXIAL LEAD, 100UH K 2.3*3.4 TP	
		L302	0LA0560K119	INDUCTOR, AXIAL LEAD, 0.56UH K 2.3*3.4 TP	
		L303	0LA0560K119	INDUCTOR, AXIAL LEAD, 0.56UH K 2.3*3.4 TP	
		L304	0LA0560K119	INDUCTOR, AXIAL LEAD, 0.56UH K 2.3*3.4 TP	
TRANSISTORs					
		Q301	0TR390409CA	TRANSISTOR, 2N3904 TP SAMSUNG TO92 NPN	
		Q302	0TR945009AA	TRANSISTOR, KSC945C-Y TP SAMSUNG TO92 NPN EPI.	
	or	Q302	0TR319809AA	TRANSISTOR, KTC3198-Y(KTC1815), TP KEC	
		Q303	0TR945009AA	TRANSISTOR, KSC945C-Y TP SAMSUNG TO92 NPN EPI.	
	or	Q303	0TR319809AA	TRANSISTOR, KTC3198-Y(KTC1815), TP KEC	
		Q304	0TR945009AA	TRANSISTOR, KSC945C-Y TP SAMSUNG TO92 NPN EPI.	
	or	Q304	0TR319809AA	TRANSISTOR, KTC3198-Y(KTC1815), TP KEC	
		Q305	0TR231009AA	TRANSISTOR, KSC2310-Y TP SAMSUNG TO92L NPN	
	or	Q305	0TR320609AB	TRANSISTOR, KTC3206-Y, TP(KTC2229), KEC	
		Q306	0TR231009AA	TRANSISTOR, KSC2310-Y TP SAMSUNG TO92L NPN	
	or	Q306	0TR320609AB	TRANSISTOR, KTC3206-Y, TP(KTC2229), KEC	
		Q307	0TR231009AA	TRANSISTOR, KSC2310-Y TP SAMSUNG TO92L NPN	
	or	Q307	0TR320609AB	TRANSISTOR, KTC3206-Y, TP(KTC2229), KEC	

*S	*AL	LOC. NO.	PART NO.	DESCRIPTION / SPECIFICATION	REMARK
RESISTORS					
		R301	0RH0752D622	RESISTOR, CHIP, 75 1/10W 5 D.R/TP	
		R302	0RH0752D622	RESISTOR, CHIP, 75 1/10W 5 D.R/TP	
		R303	0RH0752D622	RESISTOR, CHIP, 75 1/10W 5 D.R/TP	
		R304	0RD1801Q609	RESISTOR, FIXED CARBON FILM, 1.80K 1/4W(3 5% TA52	
		R305	0RD1501Q609	RESISTOR, FIXED CARBON FILM, 1.50K 1/4W(3 5% TA52	
		R306	0RD5601Q609	RESISTOR, FIXED CARBON FILM, 5.60K 1/4W(3 5% TA52	
		R307	0RD1004Q609	RESISTOR, FIXED CARBON FILM, 1M OHM 1/4 W (3.4) 5% TA52	
		R308	0RD1000Q609	RESISTOR, FIXED CARBON FILM, 100 1/4W(3 5% TA52	
		R309	0RD1001Q609	RESISTOR, FIXED CARBON FILM, 1K 1/4W(3 5% TA52	
		R310	0RD1002Q609	RESISTOR, FIXED CARBON FILM, 10K 1/4W(3 5% TA52	
		R311	0RH1000D622	RESISTOR, CHIP, 100 1/10W 5 D.R/TP	
		R312	0RD1000Q609	RESISTOR, FIXED CARBON FILM, 100 1/4W(3 5% TA52	
		R313	0RD1000Q609	RESISTOR, FIXED CARBON FILM, 100 1/4W(3 5% TA52	
		R314	0RD1001Q609	RESISTOR, FIXED CARBON FILM, 1K 1/4W(3 5% TA52	
		R315	0RD1000Q609	RESISTOR, FIXED CARBON FILM, 100 1/4W(3 5% TA52	
		R316	0RD1000Q609	RESISTOR, FIXED CARBON FILM, 100 1/4W(3 5% TA52	
		R317	0RD0221Q609	RESISTOR, FIXED CARBON FILM, 2.20 1/4W(3 5% TA52	
		R318	0RD1000Q609	RESISTOR, FIXED CARBON FILM, 100 1/4W(3 5% TA52	
		R319	0RD0332Q609	RESISTOR, FIXED CARBON FILM, 33 1/4W(3 5% TA52	
		R320	0RD0332Q609	RESISTOR, FIXED CARBON FILM, 33 1/4W(3 5% TA52	
		R321	0RD0332Q609	RESISTOR, FIXED CARBON FILM, 33 1/4W(3 5% TA52	
		R322	0RD1000Q609	RESISTOR, FIXED CARBON FILM, 100 1/4W(3 5% TA52	
		R323	0RD1000Q609	RESISTOR, FIXED CARBON FILM, 100 1/4W(3 5% TA52	
		R324	0RH7500D622	RESISTOR, CHIP, 750 OHM 1 / 10 W 5% D R/TP	
		R325	0RH1001D622	RESISTOR, CHIP, 1.0K 1/10W 5 D.R/TP	
		R326	0RH1001D622	RESISTOR, CHIP, 1.0K 1/10W 5 D.R/TP	
		R327	0RH1001D622	RESISTOR, CHIP, 1.0K 1/10W 5 D.R/TP	
		R328	0RH0561D622	RESISTOR, CHIP, 5.6 1/10W 5 TA	
		R329	0RD0561Q609	RESISTOR, FIXED CARBON FILM, 5.60 1/4W(3 5% TA52	
		R330	0RD0561Q609	RESISTOR, FIXED CARBON FILM, 5.60 1/4W(3 5% TA52	
		R331	0RD3900Q609	RESISTOR, FIXED CARBON FILM, 390 1/4W(3 5% TA52	
		R332	0RD3900Q609	RESISTOR, FIXED CARBON FILM, 390 1/4W(3 5% TA52	
		R333	0RD3900Q609	RESISTOR, FIXED CARBON FILM, 390 1/4W(3 5% TA52	
		R334	0RD0392Q609	RESISTOR, FIXED CARBON FILM, 39 1/4W(3 5% TA52	
		R335	0RD0392Q609	RESISTOR, FIXED CARBON FILM, 39 1/4W(3 5% TA52	
		R336	0RD0392Q609	RESISTOR, FIXED CARBON FILM, 39 1/4W(3 5% TA52	
		R337	0RD2203Q609	RESISTOR, FIXED CARBON FILM, 220K 1/4W(3 5% TA52	
		R338	0RD1200Q609	RESISTOR, FIXED CARBON FILM, 120 1/4W(3 5% TA52	
		R339	0RD1000Q609	RESISTOR, FIXED CARBON FILM, 100 1/4W(3 5% TA52	
		R340	0RD0332A609	RESISTOR, FIXED CARBON FILM, 33 OHM 1/2 W (7.0) 5% TA52	
		R341	0RD1200Q609	RESISTOR, FIXED CARBON FILM, 120 1/4W(3 5% TA52	
		R342	0RD2203Q609	RESISTOR, FIXED CARBON FILM, 220K 1/4W(3 5% TA52	
		R343	0RD2203Q609	RESISTOR, FIXED CARBON FILM, 220K 1/4W(3 5% TA52	
		R344	0RD0332A609	RESISTOR, FIXED CARBON FILM, 33 OHM 1/2 W (7.0) 5% TA52	
		R345	0RD0332A609	RESISTOR, FIXED CARBON FILM, 33 OHM 1/2 W (7.0) 5% TA52	

MODEL: S/W775N, S/W775C				DATE: 1998.12.23.	
*S	*AL	LOC. NO.	PART NO.	DESCRIPTION / SPECIFICATION	REMARK
		R346	0RD0102Q609	RESISTOR, FIXED CARBON FILM, 10 1/4W(3 5% TA52	
		R347	0RD0102Q609	RESISTOR, FIXED CARBON FILM, 10 1/4W(3 5% TA52	
		R348	0RD0102Q609	RESISTOR, FIXED CARBON FILM, 10 1/4W(3 5% TA52	
		R349	0RD1002A609	RESISTOR, FIXED CARBON FILM, 10K OHM 1/2 W (7.0) 5%	
		R350	0RD1002A609	RESISTOR, FIXED CARBON FILM, 10K OHM 1/2 W (7.0) 5%	
		R351	0RD1002A609	RESISTOR, FIXED CARBON FILM, 10K OHM 1/2 W (7.0) 5%	
		R352	0RD1203Q609	RESISTOR, FIXED CARBON FILM, 120K 1/4W(3 5% TA52	
		R353	0RD1203Q609	RESISTOR, FIXED CARBON FILM, 120K 1/4W(3 5% TA52	
		R354	0RD1203Q609	RESISTOR, FIXED CARBON FILM, 120K 1/4W(3 5% TA52	
		R355	0RH5600D622	RESISTOR, CHIP, 560 1/10W 5 D.R/TP	
		R356	0RH5101D622	RESISTOR, CHIP, 5.1K 1/10W 5 D.R/TP	
		R357	0RD1302Q609	RESISTOR, FIXED CARBON FILM, 13K 1/4W(3 5% TA52	
		R358	0RH5600D622	RESISTOR, CHIP, 560 1/10W 5 D.R/TP	
		R359	0RH5101D622	RESISTOR, CHIP, 5.1K 1/10W 5 D.R/TP	
		R360	0RD1302Q609	RESISTOR, FIXED CARBON FILM, 13K 1/4W(3 5% TA52	
		R361	0RH5600D622	RESISTOR, CHIP, 560 1/10W 5 D.R/TP	
		R362	0RH5101D622	RESISTOR, CHIP, 5.1K 1/10W 5 D.R/TP	
		R363	0RH1302D622	RESISTOR, CHIP, 13K 1/10W 5 TA	
		R364	0RD1000Q609	RESISTOR, FIXED CARBON FILM, 100 1/4W(3 5% TA52	
		R365	0RD0102Q609	RESISTOR, FIXED CARBON FILM, 10 1/4W(3 5% TA52	
		R366	0RD0752Q609	RESISTOR, FIXED CARBON FILM, 75 1/4W(3 5% TA52	
		R367	0RD0752Q609	RESISTOR, FIXED CARBON FILM, 75 1/4W(3 5% TA52	
		R368	0RD0752Q609	RESISTOR, FIXED CARBON FILM, 75 1/4W(3 5% TA52	
		R370	0RD0102Q609	RESISTOR, FIXED CARBON FILM, 10 1/4W(3 5% TA52	
		R371	0RD3301Q609	RESISTOR, FIXED CARBON FILM, 3.30K 1/4W(3 5% TA52	
OTHERs					
		P301	6602T20003E	WAFER, 35363-0610 MOLEX 2.0mm R/A	
		P302	6602T20003P	WAFER, 35363-1510 MOLEX 2.0mm R/A	
		P303	366-112A	WAFER, BW-501L BAEEUN 2.36mm S/T	
		P304	366-112B	WAFER, BW-502L BAEEUN 2.36mm S/T	
		SC301	381-094L	SOCKET (CIRC), CPT, 033-0-7700-41 METALLO 10P 25.714μμ	
		SG301	6918TAT005A	SPARK GAP, AXIAL, MTA-201MT GIGA AXIAL TAPING	
		SG302	6918TAT005A	SPARK GAP, AXIAL, MTA-201MT GIGA AXIAL TAPING	
		SG303	6918TAT005A	SPARK GAP, AXIAL, MTA-201MT GIGA AXIAL TAPING	
		SG304	6918TAT005A	SPARK GAP, AXIAL, MTA-201MT GIGA AXIAL TAPING	
		SG305	165-004A	SPARK GAP, AG20PT 152F-L3N/S-23 HANDOK RADIAL BULK	
		ZD301	0DZ560009CE	DIODE, ZENER, MTZJ5.6B TP ROHM-K DO34 500MW 5.6V 5MA	
		ZD302	0DZ560009CE	DIODE, ZENER, MTZJ5.6B TP ROHM-K DO34 500MW 5.6V 5MA	
		ZD303	0DZ560009CE	DIODE, ZENER, MTZJ5.6B TP ROHM-K DO34 500MW 5.6V 5MA	
CONTROL BOARD					
		C201	0CN1040K949	CAPACITOR, TUBULAR(HIGH DIELEC), 0.1M 50V Z F TA52	
		D201	0DL300009AE	LED, LTL-30EFJ TP LITEON RED D = 5 TWO COLOR	
	or	D201	0DL571300AA	LED, SPR571MVW3, TP ROHM GREEN/RED	
		ZD201	0DZ560009CE	DIODE, ZENER, MTZJ5.6B TP ROHM-K DO34 500MW 5.6V 5MA	

MODEL: S/W775N, S/W775C				DATE: 1998.12.23.	
*S	*AL	LOC. NO.	PART NO.	DESCRIPTION / SPECIFICATION	REMARK
		ZD202	0DZ560009CE	DIODE, ZENER, MTZJ5.6B TP ROHM-K DO34 500MW 5.6V 5MA	
		ZD203	0DZ560009CE	DIODE, ZENER, MTZJ5.6B TP ROHM-K DO34 500MW 5.6V 5MA	
		P201	6602T20003J	WAFER, 35363-1010 MOLEX 2.0mm R/A	
		R201	0RD1001Q609	RESISTOR, FIXED CARBON FILM, 1K 1/4W(3 5% TA52	
		R202	0RD2400Q609	RESISTOR, FIXED CARBON FILM, 240 OHM 1/4 W (3.4) 5%	
		R203	0RD4300Q609	RESISTOR, FIXED CARBON FILM, 430 1/4W(3 5% TA52	
		R204	0RD4300Q609	RESISTOR, FIXED CARBON FILM, 430 1/4W(3 5% TA52	
		R205	0RD1001Q609	RESISTOR, FIXED CARBON FILM, 1K 1/4W(3 5% TA52	
		R206	0RD2400Q609	RESISTOR, FIXED CARBON FILM, 240 OHM 1/4 W (3.4) 5%	
		R207	0RD8200Q609	RESISTOR, FIXED CARBON FILM, 820 1/4W(3 5% TA52	
		R208	0RD8200Q609	RESISTOR, FIXED CARBON FILM, 820 1/4W(3 5% TA52	
		R209	0RD2401Q609	RESISTOR, FIXED CARBON FILM, 2.40K 1/4W(3 5% TA52	
		R210	0RD3600Q609	RESISTOR, FIXED CARBON FILM, 360 1/4W(3 5% TA52	
		R211	0RD2200Q609	RESISTOR, FIXED CARBON FILM, 220 1/4W(3 5% TA52	
		SW201	140-058D	SWITCH, TACT, SKHV10911A LGEC NON 12 20 HORIZONTAL	
		SW202	140-058D	SWITCH, TACT, SKHV10911A LGEC NON 12 20 HORIZONTAL	
		SW203	140-058D	SWITCH, TACT, SKHV10911A LGEC NON 12 20 HORIZONTAL	
		SW204	140-058D	SWITCH, TACT, SKHV10911A LGEC NON 12 20 HORIZONTAL	
		SW205	140-058D	SWITCH, TACT, SKHV10911A LGEC NON 12 20 HORIZONTAL	
		SW206	140-058D	SWITCH, TACT, SKHV10911A LGEC NON 12 20 HORIZONTAL	
		SW207	140-058D	SWITCH, TACT, SKHV10911A LGEC NON 12 20 HORIZONTAL	
TCO BLOCK OPTION (TCO-95 ONLY)					
		C101	0CK1040K945	CAPACITOR, CERAMIC (HIGH DIELECTRIC), 0.1UF 50V Z F TR	
		C102	0CE1076F618	CAPACITOR, AL.ELECTROLYTIC, 100UF SMS 16V M TP(5)	
		C103	181-288N	CAPACITOR, POLYESTER, MKT 100V 103JTR PHS86103	
		C104	0CK1040K945	CAPACITOR, CERAMIC (HIGH DIELECTRIC), 0.1UF 50V Z F TR	
		C105	0CE1066K618	CAPACITOR, AL.ELECTROLYTIC, 10M SMS 50V M FM5 TP(5)	
		C106	181-288M	CAPACITOR, POLYESTER, MKT 63V 105KTR PHS15105	
		ZD101	0DZ560009CE	DIODE, ZENER, MTZJ5.6B TP ROHM-K DO34 500MW 5.6V 5MA	
		IC101	0INS353000A	IC, NATIONAL SEMICONDUCTOR, LF353N OP-AMP	
		Q101	0TR350200AA	TRANSISTOR, 2SC3502 BK SANYO TO126 NPN	
		Q102	0TR390409CA	TRANSISTOR, 2N3904 TP SAMSUNG TO92 NPN	
		Q103	0TR485009AA	TRANSISTOR, BF485 TP PHILIPS TO92 NPN	
		Q104	0TR488009AA	TRANSISTOR, BF488 TP PHILIPS TO92 PNP	
		R101	0RD0102Q609	RESISTOR, FIXED CARBON FILM, 10 1/4W(3 5% TA52	
		R102	0RD3302Q609	RESISTOR, FIXED CARBON FILM, 33K 1/4W(3 5% TA52	
		R103	0RD3302Q609	RESISTOR, FIXED CARBON FILM, 33K 1/4W(3 5% TA52	
		R104	0RD6804Q609	RESISTOR, FIXED CARBON FILM, 6.8M OHM 1/4 W (3.4) 5%	
		R105	0RD1000Q609	RESISTOR, FIXED CARBON FILM, 100 1/4W(3 5% TA52	
		R106	0RD6201Q609	RESISTOR, FIXED CARBON FILM, 6.20K 1/4W(3 5% TA52	
		R107	0RD1502A609	RESISTOR, FIXED CARBON FILM, 15K OHM 1/2 W (7.0) 5%	
		R108	0RD1002A609	RESISTOR, FIXED CARBON FILM, 10K OHM 1/2 W (7.0) 5%	
		R109	0RD1502A609	RESISTOR, FIXED CARBON FILM, 15K OHM 1/2 W (7.0) 5%	
		R110	971-0016	WIRE, JUMP, TIN HDC 0.60H	
		R111	0RD6802Q609	RESISTOR, FIXED CARBON FILM, 68K 1/4W(3 5% TA52	

MODEL: S/W775N, S/W775C				DATE: 1998.12.23.	
*S	*AL	LOC. NO.	PART NO.	DESCRIPTION / SPECIFICATION	REMARK
		R112	0RD6804Q609	RESISTOR, FIXED CARBON FILM, 6.8M OHM 1/4 W (3.4) 5%	
		R113	0RD1001Q609	RESISTOR, FIXED CARBON FILM, 1K 1/4W(3 5% TA52	
		R114	0RD1001Q609	RESISTOR, FIXED CARBON FILM, 1K 1/4W(3 5% TA52	
		VR101	180-037G	VOLUME, EVN-DCAA03B13 (MEC),1KB	
		P101	6602T25008A	WAFER, SMW250-02 YEONHO 2.5MM LOCK S/T	
		P102	6602T25008A	WAFER, SMW250-02 YEONHO 2.5MM LOCK S/T	
MISCELLANEOUS					
		CDT	2423GC0B85D	CDT SET,ITC, M41LFQ813X 46NLAA	
		D/COIL	6140TC3001A	COIL,DEGAUSSING COIL, "1090MM 14.3 OHM 0.45MM 120T 17"	
		G/WIRE	6868T17003C	CDT EARTH, CB770 TIN WIRE BRAID(128)	
		P/CORD	6410TEW002B	POWER CORD, VDE/SEMKO 1870MM WALL	
		P/CORD	6410TUW002B	POWER CORD, UL/CSA 1870MM WALL	
		P/CORD	6410TWP001D	POWER CORD, UNIVERSAL 1560MM	
		S/CABLE	6866TA9011D	SIGNAL CABLE, UL 2990-9C(5.5) AT 1560MM GRAY	