

TPC-30/32 Series

**Intel PXA270
Touch Panel Computer
with 3.5" QVGA TFT LCD**

User Manual

Copyright

The documentation and the software included with this product are copyrighted 2008 by Advantech Co., Ltd. All rights are reserved. Advantech Co., Ltd. reserves the right to make improvements in the products described in this manual at any time without notice. No part of this manual may be reproduced, copied, translated or transmitted in any form or by any means without the prior written permission of Advantech Co., Ltd. Information provided in this manual is intended to be accurate and reliable. However, Advantech Co., Ltd. assumes no responsibility for its use, nor for any infringements of the rights of third parties, which may result from its use.

Acknowledgements

IBM, PC/AT, PS/2 and VGA are trademarks of International Business Machines Corporation.

Microsoft Windows and MS-DOS are registered trademarks of Microsoft Corp.

All other product names or trademarks are properties of their respective owners.

This Manual Covers the Following Models:

- TPC-30 Series
- TPC-32 Series
- TPC-30T-E2AE
- TPC-32T-E2AE

Part No. 2003003021

1.2 Edition

Printed in Taiwan

October 2008

Product Warranty (2 years)

Advantech warrants to you, the original purchaser, that each of its products will be free from defects in materials and workmanship for two years from the date of purchase.

This warranty does not apply to any products which have been repaired or altered by persons other than repair personnel authorized by Advantech, or which have been subject to misuse, abuse, accident or improper installation. Advantech assumes no liability under the terms of this warranty as a consequence of such events.

Because of Advantech's high quality-control standards and rigorous testing, most of our customers never need to use our repair service. If an Advantech product is defective, it will be repaired or replaced at no charge during the warranty period. For out-of-warranty repairs, you will be billed according to the cost of replacement materials, service time and freight. Please consult your dealer for more details.

If you think you have a defective product, follow these steps:

1. Collect all the information about the problem encountered. (For example, CPU speed, Advantech products used, other hardware and software used, etc.) Note anything abnormal and list any onscreen messages you get when the problem occurs.
2. Call your dealer and describe the problem. Please have your manual, product, and any helpful information readily available.
3. If your product is diagnosed as defective, obtain an RMA (return merchandise authorization) number from your dealer. This allows us to process your return more quickly.
4. Carefully pack the defective product, a fully-completed Repair and Replacement Order Card and a photocopy proof of purchase date (such as your sales receipt) in a shippable container. A product returned without proof of the purchase date is not eligible for warranty service.
5. Write the RMA number visibly on the outside of the package and ship it prepaid to your dealer.

CE

This product has passed the CE test for environmental specifications.

FCC Class A

This equipment has been tested and found to comply with the limits for a Class A digital device, pursuant to Part 15 of the FCC Rules. These limits are designed to provide reasonable protection against harmful interference when the equipment is operated in a commercial environment. This equipment generates, uses and can radiate radio frequency energy and, if not installed and used in accordance with the instruction manual, may cause harmful interference to radio communications. Operation of this equipment in a residential area is likely to cause harmful interference in which case the user will be required to correct the interference at his own expense.

Safety Instructions

1. Read these safety instructions carefully.
2. Keep this User's Manual for later reference.
3. Disconnect this equipment from any AC outlet before cleaning. Use a damp cloth. Do not use liquid/spray detergents for cleaning.
4. For plug-in equipment, the power outlet socket must be located near the equipment and must be easily accessible.
5. Put this equipment on a reliable surface during installation. Dropping it or letting it fall may cause damage.
6. The openings on the enclosure are for air convection. Protect the equipment from overheating. **DO NOT COVER THE OPENINGS.**
7. Make sure the voltage of the power source is correct before connecting the equipment to the power outlet.
8. Position the power cord so that people cannot step on it. Do not place anything over the power cord.
9. All cautions and warnings on the equipment should be noted.
10. If the equipment is not used for a long time, disconnect it from the power source to avoid damage by transient overvoltage.
11. Never pour any liquid into an opening. This may cause fire or electrical shock.

12. Never open the equipment. For safety reasons, the equipment should be opened only by qualified service personnel.
13. If one of the following situations arises, get the equipment checked by service personnel:
 - a. The power cord or plug is damaged.
 - b. Liquid has penetrated into the equipment.
 - c. The equipment has been exposed to moisture.
 - d. The equipment does not work well, or you cannot get it to work according to the user's manual.
 - e. The equipment has been dropped and damaged.
 - f. The equipment has obvious signs of breakage.
14. Do not leave this equipment in an environment where the storage temperature may go below -20°C (-4°F) or above 70°C (158°F). This could damage the equipment.
15. If one of the following situations arises, get the equipment checked by service personnel:
 - a. The Power cord or plug is damaged.
 - b. Liquid has penetrated into the equipment.
 - c. The equipment has been exposed to moisture.
 - d. The equipment has not work well or you can not get it work according to user's manual.
 - e. The equipment has dropped and damaged.
 - f. If the equipment has obvious sign of breakage
16. Never open the equipment. For safety reasons, only qualified service personnel should open the equipment.
17. CAUTION: The computer is provided with a battery-powered real-time clock circuit. There is a danger of explosion if battery is incorrectly replaced. Replace only with same or equivalent type recommended by the manufacture. Discard used batteries according to the manufacturer's instructions.

Wichtige Sicherheitshinweise

1. Bitte lesen Sie sich diese Hinweise sorgfältig durch.
2. Heben Sie diese Anleitung für den späteren Gebrauch auf.
3. Vor jedem Reinigen ist das Gerät vom Stromnetz zu trennen. Verwenden Sie keine Flüssig- oder Aerosolreiniger. Am besten dient ein angefeuchtetes Tuch zur Reinigung.
4. Die Netzanschlußsteckdose soll nahe dem Gerät angebracht und leicht zugänglich sein.
5. Das Gerät ist vor Feuchtigkeit zu schützen.
6. Bei der Aufstellung des Gerätes ist auf sicheren Stand zu achten. Ein Kippen oder Fallen könnte Verletzungen hervorrufen.
7. Die Belüftungsöffnungen dienen zur Luftzirkulation, die das Gerät vor Überhitzung schützt. Sorgen Sie dafür, daß diese Öffnungen nicht abgedeckt werden.
8. Beachten Sie beim Anschluß an das Stromnetz die Anschlußwerte.
9. Verlegen Sie die Netzanschlußleitung so, daß niemand darüber fallen kann.
10. Es sollte auch nichts auf der Leitung abgestellt werden. Alle Hinweise und Warnungen, die sich an den Geräten befinden, sind zu beachten.
11. Wird das Gerät über einen längeren Zeitraum nicht benutzt, sollten Sie es vom Stromnetz trennen. Somit wird im Falle einer Überspannung eine Beschädigung vermieden.
12. Durch die Lüftungsöffnungen dürfen niemals Gegenstände oder Flüssigkeiten in das Gerät gelangen. Dies könnte einen Brand bzw. elektrischen Schlag auslösen.
13. Öffnen Sie niemals das Gerät. Das Gerät darf aus Gründen der elektrischen Sicherheit nur von autorisiertem Servicepersonal geöffnet werden.
14. Wenn folgende Situationen auftreten, ist das Gerät vom Stromnetz zu trennen und von einer qualifizierten Servicestelle zu überprüfen:
 - a - Netzkabel oder Netzstecker sind beschädigt.
 - b - Flüssigkeit ist in das Gerät eingedrungen.
 - c - Das Gerät war Feuchtigkeit ausgesetzt.
 - d - Wenn das Gerät nicht der Bedienungsanleitung entsprechend funktioniert oder Sie mit Hilfe dieser Anleitung keine Verbesserung erzielen.

Technical Support and Assistance

Step 1. Visit the Advantech web site at **www.advantech.com/support** where you can find the latest information about the product.

Step 2. Contact your distributor, sales representative, or Advantech's customer service center for technical support if you need additional assistance. Please have the following information ready before you call:

- Product name and serial number
- Description of your peripheral attachments
- Description of your software (operating system, version, application software, etc.)
- A complete description of the problem
- The exact wording of any error messages

Contents

Chapter	1	General Information	2
	1.1	Introduction	2
	1.2	Specifications	2
		1.2.1 System Kernel	2
		1.2.2 I/O Ports	3
		1.2.3 Storage	3
		1.2.4 Safety and Environment	3
	1.3	LCD Specifications	4
	1.4	Touchscreen Specifications.....	4
	1.5	Power.....	4
	1.6	I/O Ports Arrangement	5
		Figure 1.1:I/O Ports Arrangement	5
	1.7	Panel Mounting	5
	1.8	Dimensions and Cutout.....	6
		Figure 1.2:Dimensions and Cutout	6
Chapter	2	System Setup.....	8
		Figure 2.1:Power Connector and Power Lines	8
		Figure 2.2:Pin Assignment on the Power Receptor	8
		Figure 2.3:Power Line into the Power Receptor	9
Chapter	3	System Tuning	12
	3.1	LCD Tuning	12
		Figure 3.1:Display	12
		Figure 3.2:Display Properties	12
	3.2	Touchscreen Calibration	13
		Figure 3.3:Style	13
		Figure 3.4:Stylus Properties	13
		Figure 3.5:Touchscreen Calibration	14
	3.3	Buzzer Setting	14
		Figure 3.6:Volume & Sounds Settings 1	14
		Figure 3.7:Volume & Sounds Settings 2	14
Chapter	4	Windows CE	18
		Figure 4.1:Windows CE on TPC-30/32	18
	4.1	TPC Utilities.....	19
		4.1.1 Soft-KeyBoard	19
		Figure 4.2:Soft-KeyBoard	19
		4.1.2 TPC Configuration	19
		Figure 4.3:TPC Configurator	19
		Figure 4.4:General	20
		Figure 4.5:Network	20
		Figure 4.6:Advanced Network	21
		Figure 4.7:Watchdog Setting	21
		Figure 4.8:Misc Page	22

	Figure 4.9:Reboot Machine	23
	Figure 4.10:Registry Saving Success	24
	Figure 4.11:Registry Editor	24
4.1.3	Advantech Tools	25
	Figure 4.12:Advantech Tools	25
	Figure 4.13:Remote Display Host Application	26
	Figure 4.14:Remote Display Application	27
	Figure 4.15:Connect	27
	Figure 4.16:Remote Display Host Application	28
	Figure 4.17: NotepadPlus	28
	Figure 4.18:TPC Version Information	29
4.1.4	Other Utilities	29
4.2	Networking	30
4.2.1	Network via Ethernet	30
	Figure 4.19:Network and Dial-up Connections	30
	Figure 4.20:Selected Connection	31
	Figure 4.21:Setting IP Address	31
	Figure 4.22:Setting Name Servers	32
	Figure 4.23:Save Registry	32
4.2.2	Network via Serial Port	33
	Figure 4.24:PC Connection	33
	Figure 4.25:PC Connection Properties	34
	Figure 4.26:Change Connection	34
	Figure 4.27:Change Connection	35
	Figure 4.28:COM1 Set	35
	Figure 4.29:Microsoft ActiveSync	36
	Figure 4.30:Select Connection Setting	36
	Figure 4.31:Configure Connection Setting	37
	Figure 4.32:Get Connected	37
	Figure 4.33:Run Repllog.exe on the TPC	38
	Figure 4.34:Connection on the TPC	38
	Figure 4.35:Connection on the Host PC	38
	Figure 4.36:Explore the TPC	39
4.3	Application Program Development.....	39
4.3.1	System Requirements for Developers	39
4.3.2	Building Windows CE Runtime	40
	Figure 4.37:Starting a New Project	41
	Figure 4.38:Selecting	41
	Figure 4.39:Compiling Your Program	42
Appendix A	Watchdog Timer Programming.....	44
A.1	DeviceIOControl.....	44
A.2	How to Use the Control Code	46
A.2.1	IOCTL_WDT_ENABLE:	46
A.2.2	IOCTL_WDT_DISABLE:	46
A.2.3	IOCTL_WDT_STROBE:	46

	A.2.4	IOCTL_WDT_GETTIMEOUT:	47
	A.2.5	IOCTL_WDT_SETTIMEOUT:	47
	A.2.6	IOCTL_WDT_REBOOT:	47
	A.3	Examples	48
Appendix B		Fuse Specifications	52
	B.1	Fuse Specifications	52
Appendix C		Pin Assignments	54
	C.1	RS-232 Pin Assignments.....	54
	C.2	RS-485 Pin Assignment	54
	C.3	CAN-Bus Pin Assignments.....	55
Appendix D		Visual Settings	58
	D.1	Font Setting	58
		Figure D.1:Font Setting	58
		Figure D.2:Small Font Setting	58
		Figure D.3:Change Font Setting	59
		Figure D.4:Small Font Display	59
	D.2	Screen Rotation	60
		Figure D.5:Screen Rotation	60
		Figure D.6:Screen Rotation Options	60
		Figure D.7:90 Degrees Rotation	61
		Figure D.8:Portrait Rotation	61
Appendix E		TPC-30T Update Guide.....	64
	E.1	Updating Image & Bootloader.....	64
Appendix F		COM Port Settings.....	68

General Information

This chapter gives background information for the TPC-30/32 series.

Sections include:

- Introduction
- Specifications
- LCD Specifications
- Touchscreen Specifications
- Power
- I/O Port Arrangement
- Mounting
- Dimensions and Cutout

Chapter 1 General Information

1.1 Introduction

The TPC-30/32 series of touch panel computers consist of state-of-the-art HMI (Human Machine Interfaces). The 3.5" operator interface combined with a RISC-based computing platform offers these key features:

- **Bright Display:**
The high-brightness LCD display provides a clear interface.
- **Fanless:**
By using a low power processor, the system does not have to rely on fans, which often are unreliable, and attracts dust.
- **Powerful Communication Capability:**
The TPC-30/32 series provides a powerful I/O interface for easy communication with other devices. The I/O interface includes serial ports, RS-485 port, Ethernet and USB. (Serial Port default as RS-232)
- **Windows CE Support:**
Advantech offers platform support for Windows CE. The optional Windows CE operating system specifically for the TPC-30/32 is available for Windows CE application program builders.
- **JVM Support:**
TPC-30/32 is powered by JVM, compatible with Personal Java 1.2.

1.2 Specifications

1.2.1 System Kernel

- **CPU:** Intel PXA270 312 MHz
- **VGA:** CPU Built-in
- **DRAM:** Built-in 64MB SDRAM
- **Storage Memory:** 32MB onboard NAND Flash
- **Ethernet:** DM9000 10/100Base-T Ethernet controller; IEEE 802.3
- **Watchdog Timer:** Intel PXA watchdog timer; 5, 10, 15, 30, 45, 60 second and 2, 5, 10 minutes timeout period option
- **SD Slot:** Secure Digital Slot

1.2.2 I/O Ports

- 1 serial port: RS-232 or RS-485 for TPC-30 (default as RS-232)
CAN-Bus for TPC-32 (RS-232 for debug mode support)
- 1 RJ-45 Ethernet port (LAN will crash when speed mode is changed)
- 1 USB host port compliant with USB 1.1

1.2.3 Storage

TPC-30/32 panel computers provide two methods for storage. One is the on-board 32 MB NAND flash and the other one is an SD card.

1.2.4 Safety and Environment

Safety

- FCC Class A, CE certified
- The front bezel is compliant with NEMA 4/ IP65

Environment

- **Operating Temperature:** 0~50° C (32 ~ 122° F)
- **Storage Temperature:** -20 ~ 60° C (-4 ~ 140° F)
- **Humidity:** 10~95% @ 40° C relative humidity (non-condensing)
- **Vibration:** 1 Grms (Random, Operating)

1.3 LCD Specifications

	TPC-30/32
Display Type	TFT LCD
Size (diagonal)	3.5"
Maximum Resolution	320 x 240 (QVGA)
Maximum Colors	64K
Pixel Pitch (W x H)	0.073 x 0.219 mm
Viewing Angle	120° (H) x 110° (V)
Luminance (cd / m2)	400
Contrast Ratio	300
Operating Temperature	-20 ~ 70° C (Ambient)
Backlight	LED
Backlight MTBF	30,000 hours

1.4 Touchscreen Specifications

Touch Type	Resistive
Base Glass Construction	Glass
Resolution	Continuous
Light Transmission	80% typical
Controller	DMC9000
Power Rating	5 VDC
Software Driver	Windows CE (embedded)
Durability	1 million times with a 8 mm diameter silicone rubber finger

Note *There is no pointer/cursor shown using the touch screen. The cursor only appears when closing or minimizing the window.*

1.5 Power

- **Input Voltage:** 8 ~ 28 VDC
- **Maximum Current:** 2.5 A

1.6 I/O Ports Arrangement

TPC-30/32 panel computers provide 1 serial port, 1 Ethernet LAN port and 1 USB port.



Figure 1.1: I/O Ports Arrangement

1.7 Panel Mounting

There is an adhesive waterproof gasket on the front bezel. Make sure the waterproof gasket is in position before installing a TPC-30/32 panel computer into the panel opening.

1. Install the panel computer into the panel opening.
2. Find the mount bracket, four short screws and four long screws in the accessory pack. Fix the mount bracket on the rear cover with four short screws and then fasten the long screws. These screws will then push the mounting panel and fix the unit. The mounting panel thickness is suggested to be less than 3.5 mm (0.137 inch).

1.8 Dimensions and Cutout

- **Weight:** 0.5 Kg
- **Dimensions (WxHxD):** 121 x 85.5 x 26.5 mm (4.76" x 3.37" x 1.75")
- **Cutout:** 115 x 79.5mm

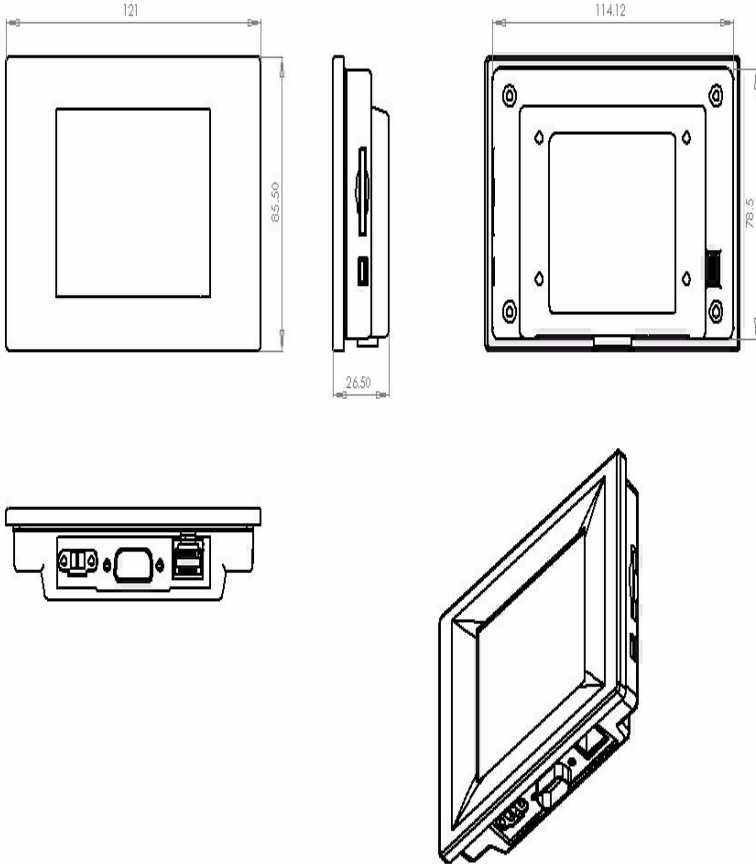


Figure 1.2: Dimensions and Cutout

System Setup

This chapter provides a brief explanation for operating the TPC-30/32.

Chapter 2 System Setup

You can quickly get up and running by following the step-by-step instructions below.

1. Open the package. Please check the packing list at the beginning of this manual to make sure every item is there.
2. Connect the power connector to the 8~28 VDC power lines. The power lines can either be from some power adapter or an in-house power source.

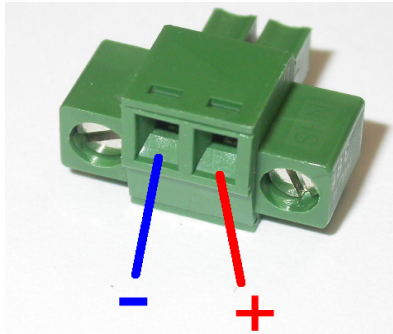


Figure 2.1: Power Connector and Power Lines

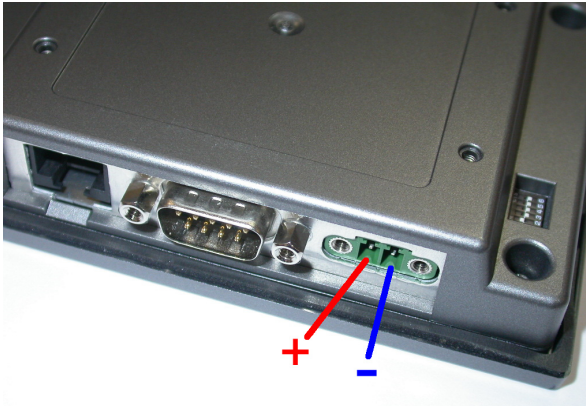


Figure 2.2: Pin Assignment on the Power Receptor

Warning *The system may be damaged when the power is turned on if the power source is not connected to the correct pins.*

3. Plug the power lines into the system power receptor. Thus the system will turn on.

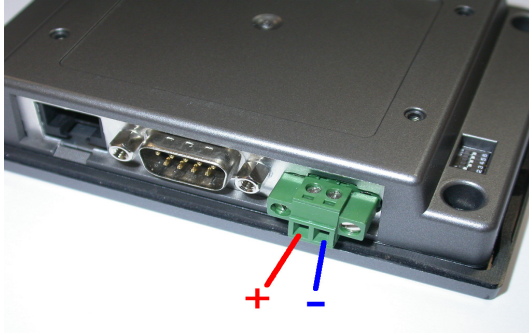


Figure 2.3: Power Line into the Power Receptor

4. Turn on the System
5. Calibrate the touchscreen.

System Tuning

Sections include:

- LCD Contrast Tuning
- Touchscreen Calibration
- Buzzer Setting

Chapter 3 System Tuning

3.1 LCD Tuning

The display settings let you control the backlight. Backlight provides a screen saving function. The backlight can be automatically turned off when the device is no longer used to lengthen the device life. Please go to “Start” † “Setting” † “Control Panel” † “Display” as shown in the Figure below.

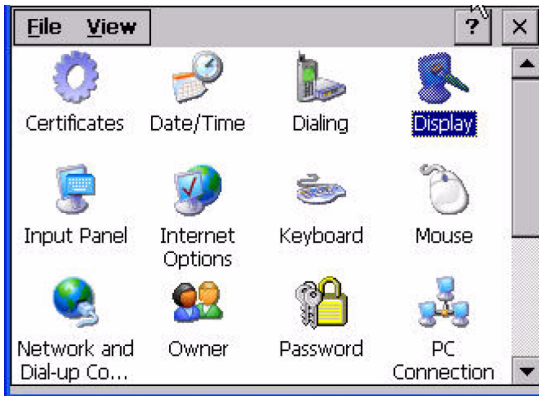


Figure 3.1: Display

To set the time to automatically turn off, tick the check box ‘turn off backlight’ and set the time to elapse by inputting a number in the edit box.



Figure 3.2: Display Properties

3.2 Touchscreen Calibration

You can calibrate the touchscreen through “Start” † “Setting” † “Control Panel” † “Stylus” as shown in the Figure below.



Figure 3.3: Style

The window of the stylus properties will display after you click the stylus. There are two tabs in this screen: Double-Tap and Calibration. Double-Tap is used to record the time period between the two taps when double-tapping in Windows CE. Calibration is for users to calibrate the touch screen.

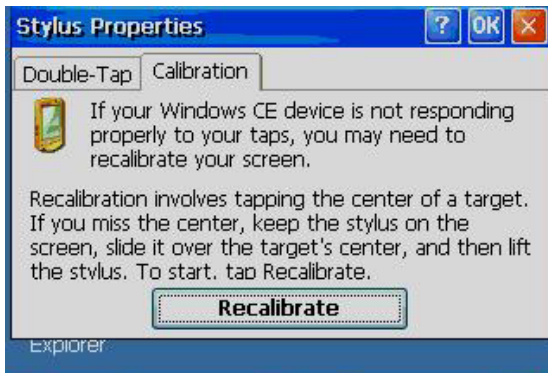


Figure 3.4: Stylus Properties

Please press “Calibration” and then click “Recalibrate” to calibrate the touch screen as shown below. A cross will appear on the screen in the order: center point, upper-left, lower-left, lower-right, and upper-right. Use the stylus to tap the center of the cross until the cross moves to next location.

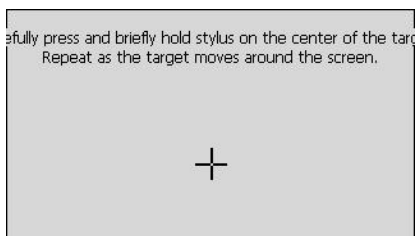


Figure 3.5: Touchscreen Calibration

3.3 Buzzer Setting

TPC-30/32 panel computers provide a buzzer setting in Windows CE. This function enables a beep when users use the touch screen. To enable/disable this functionality, open “Start” † “Setting” † “Control Panel” † “Volume & Sounds” as shown in Figure 3.6.

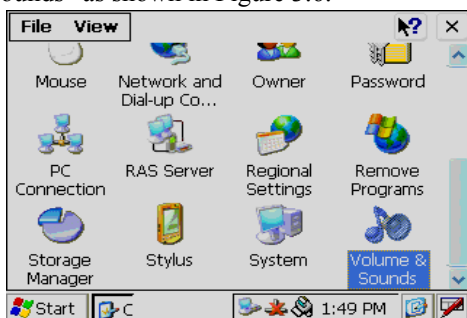


Figure 3.6: Volume & Sounds Settings 1

As shown in Figure 3.7, you can enable/disable this functionality.

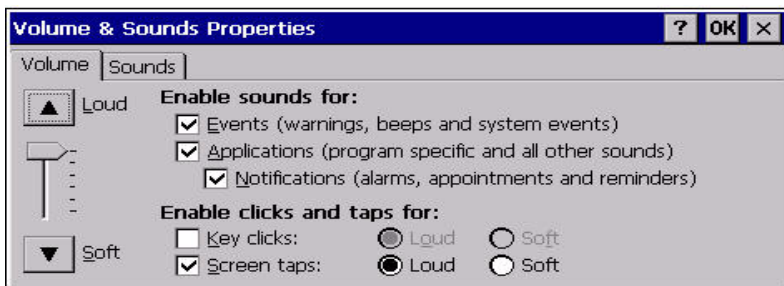


Figure 3.7: Volume & Sounds Settings 2

Windows CE

Sections include:

- TPC Utilities
- Networking
- Application Program Development

Chapter 4 Windows CE

The TPC-30/32 operator interface terminals are designed for Windows CE. Windows CE is a compact operating system that occupies less storage space and use less system resources compared with other operating systems. By its modular nature, it is possible to choose the functions that are useful for a specific application. This not only reduced the system resources required, it also reduces start-up time. In the field of industrial automation or for operator interface terminals, this is an appealing feature because the impact of downtime is minimized. Furthermore, the small storage space required makes it possible to install the operating system on a reliable solid-state disk.

Note *The default version of Windows CE in TPC-30/32 series is the English version. Please contact your local Advantech representative for local language support.*



Figure 4.1: Windows CE on TPC-30/32

Note: *The TPC-30/32 series also provides Remote Desktop Connection in Windows CE but the maximum resolution supported is only 320 x 240.*

4.1 TPC Utilities

There are several utilities built into Windows CE in the TPC series.

4.1.1 Soft-Keyboard

The TPC-30/32 series also has a small-sized operator interface. Since it is not convenient to attach a keyboard to such a small device, a software keyboard is built into the standard Windows CE OS. Upon boot-up, a small keyboard icon will appear on the status bar. Tap this icon with the stylus to activate/hide this Soft-keyboard.

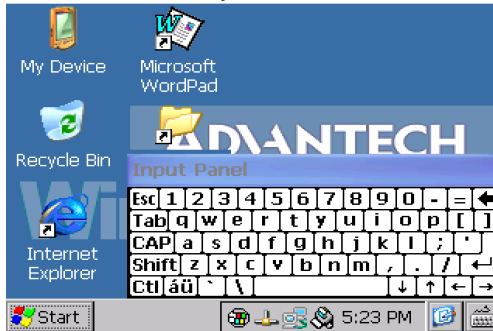


Figure 4.2: Soft-Keyboard

4.1.2 TPC Configuration

The TPC-30/32 series provides an integrated utility to configure the basic settings of the device. Execute it by clicking the TPC Configurator icon on the desktop. Navigate the configuration by tapping the four tab pages for: general, network, watchdog and misc.

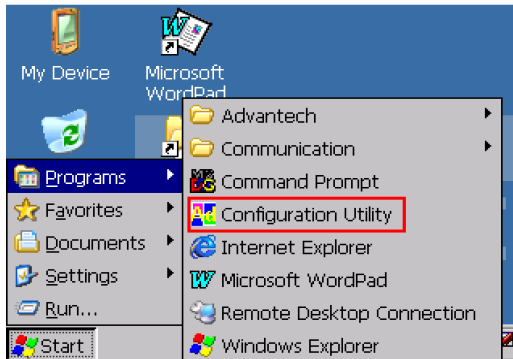


Figure 4.3: TPC Configurator

General Page

This page displays the basic system information. There are two main parts: system and memory. The system shows the OS image version and CPU type. The second part includes total capacity, usage and currently available capacity of the disk and the memory.

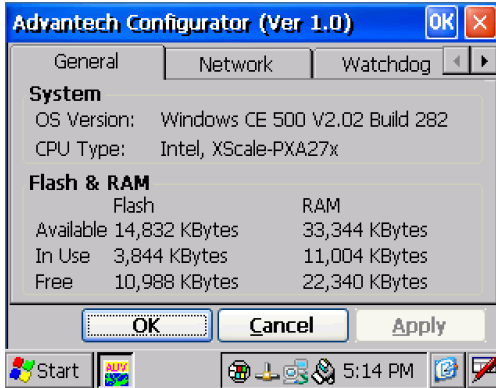


Figure 4.4: General

Network

This page shows information about the active network adapter. You can select the network adapter from the combo box as shown in Figure 4.5. Release the current IP and retrieve the new IP through the provided button, “Renew”. Use the “Ping” button to ping a specified IP address if you wish to test the connection.



Figure 4.5: Network

You can get more detailed IP information through “Advanced Network”. The information contains the default gateway, DHCP server, WINS and DNS server address as shown in Figure 4.6 below.

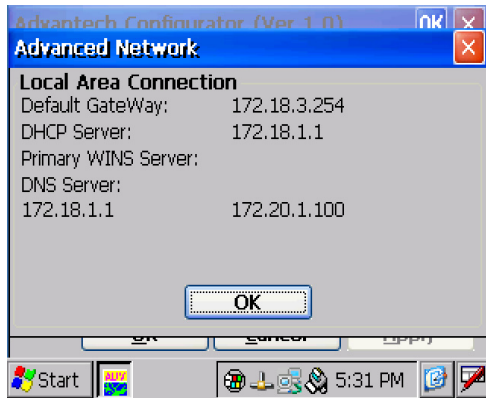


Figure 4.6: Advanced Network

Watchdog

Watchdog is a function to let the device automatically reset if a program does not respond in time. This prevents system crashes and hangs to stop your critical applications, as the watchdog will automatically restart the machine when required.

Set the response time through the combo box as shown below. The timer is the period that the watchdog will wait for a response.

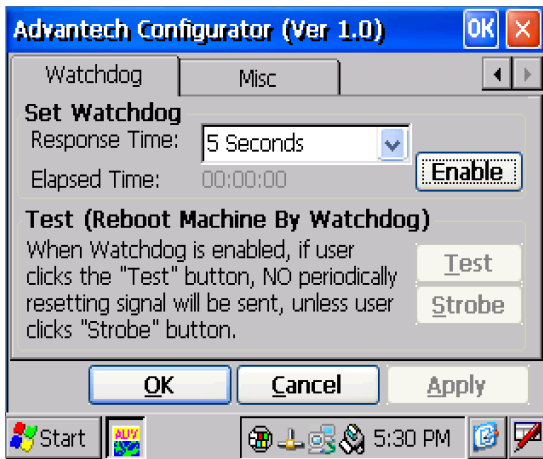


Figure 4.7: Watchdog Setting

Only when you select a time span and enable the watchdog, will the response time be effective. When the watchdog is enabled and the "Test" button is clicked, the NO resetting signal will be periodically sent to the watchdog hardware onboard. The watchdog will suppose the machine to be deadlocked and REBOOT it after the watchdog response time. If the machine reboots as expected after the watchdog response time, the watchdog is proved to be working properly.

Misc

There are several functions provided in the Misc page as shown in the figure below.

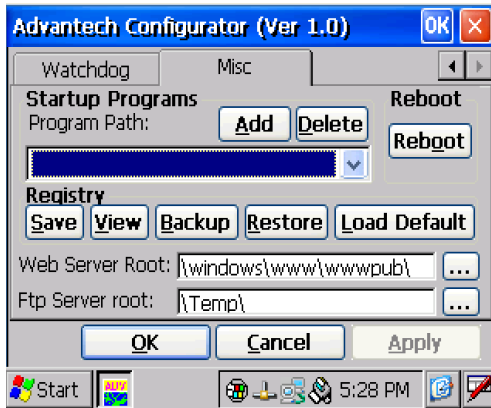


Figure 4.8: Misc Page

Startup Programs: You can easily set the startup programs without editing. The programs listed in the combo box will be automatically executed after the system has successfully booted. Click the “Add” button to insert a file to the startup. If you would like to remove the file from the startup or the combo box, please click “Delete”.

Note *Do NOT try to insert a NON-executable file into the startup program.*

Reboot: You can reboot TPC-30/32 panel computers by clicking the “Reboot” button. Once this button is clicked, the dialog below will be displayed.

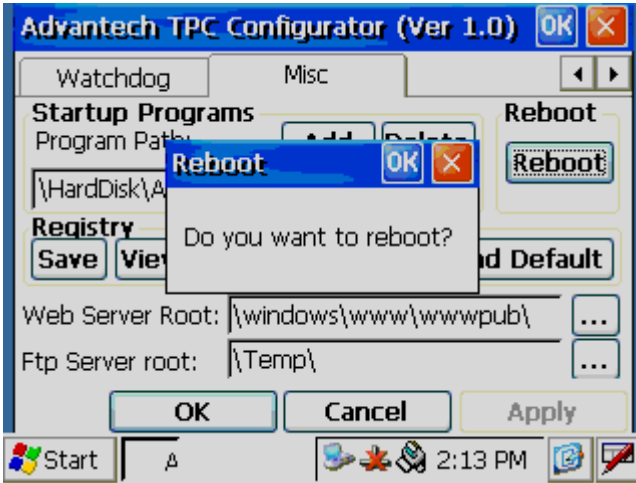


Figure 4.9: Reboot Machine

There are two additional ways to reboot the system, clicking a small machine icon on the status bar and executing a command, `reboot.exe`, through a command line program.

Registry: You can click the “Save” button to save the registry to a solid state disk, and click the “View” button to view, edit, create, or delete registry information. You also can backup or restore the registry setting by clicking the backup or restore button.

Note *It is not allowed to backup and restore over different image versions.*

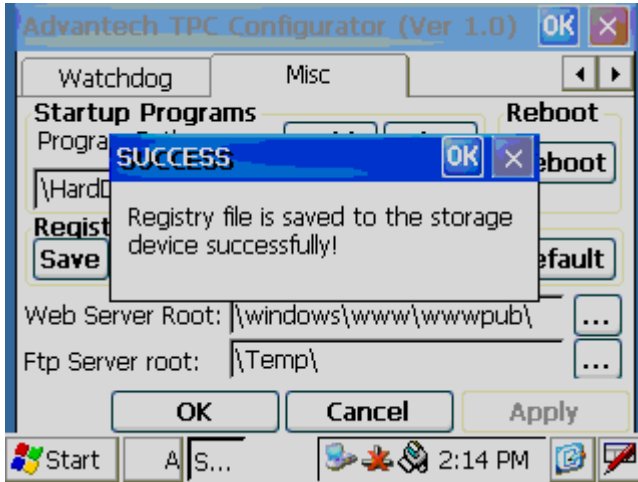


Figure 4.10: Registry Saving Success

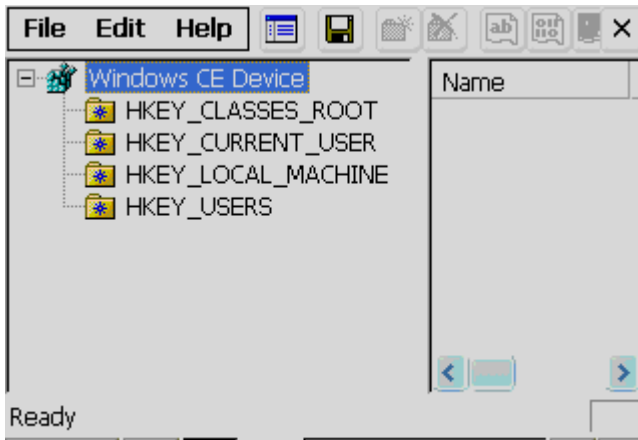


Figure 4.11: Registry Editor

Web Server Root: Input the root path of the web server here. The root path will only be effective after the machine has been rebooted.

FTP Server Root: Input the root path of the ftp server here. The root path will only be effective after the machine has been rebooted.

4.1.3 Advantech Tools

There are several useful tools in the Advantech program. Please go to “Start” † “Programs” † “Advantech” to run the tools as shown in Figure 4.12. The tools include “ActiveSync”, “Registry Editor”, “Registry Saver”, “Remote Display Application”, “NotepadPlus”, “System Font Setting” and “TPC Version Information”.

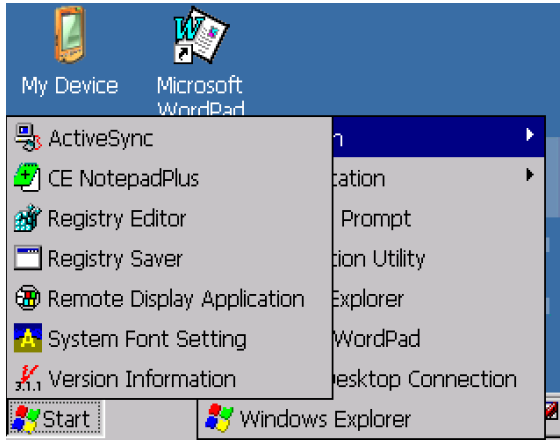


Figure 4.12: Advantech Tools

ActiveSync

This program synchronizes data and monitors the connection between TPC-30/32 panel computers and their host computer. By default, it will be executed automatically when you want to establish a connection to a target device with ActiveSync.

Registry Editor

When Registry Editor is executed as shown in the Figure 4.11, you can use this program to view, edit, enter, delete or save registry data.

Registry Saver

When Registry Saver is executed, the system registry will be saved. Also, you can execute it in a command-line environment to save the registry like “regsave.exe” or “regsave.exe -s” for the silence mode.

Remote Display Application

Remote Display Application displays a Windows CE device screen on a remote desktop. It works with the Windows CE Remote Display Host application. Because the connection is through the network, the network function of the host machine and panel computer must work properly. Via the Remote Display Application you can see the display of the panel computer and control it from a host machine.

Remote Display Host application (cerhost.exe) must be executed on a remote host desktop as shown in the Figure 4.13.

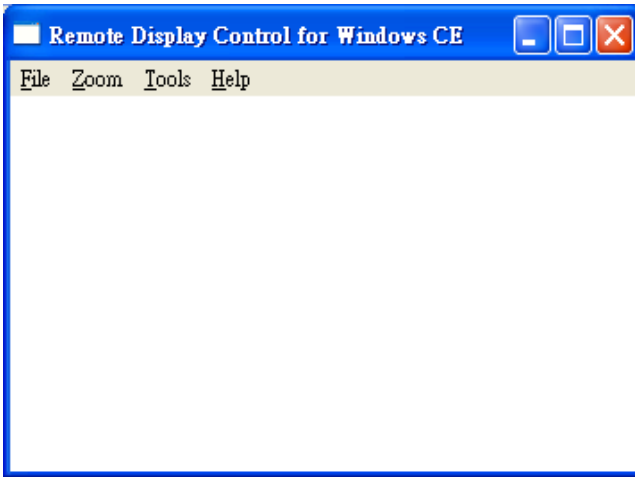


Figure 4.13: Remote Display Host Application

In addition, you must run Remote Display Application on the panel computer as shown in Figure 4.14. Click the “Connect” button and key in the host name or IP address as shown in the Figure 4.15.



Figure 4.14: Remote Display Application

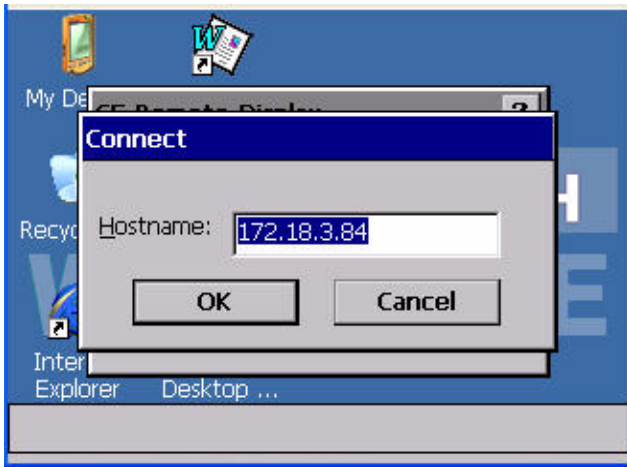


Figure 4.15: Connect

Once the connection is successfully established, you can see the display of the panel computer and control it from the host machine as shown in Figure 4.16.

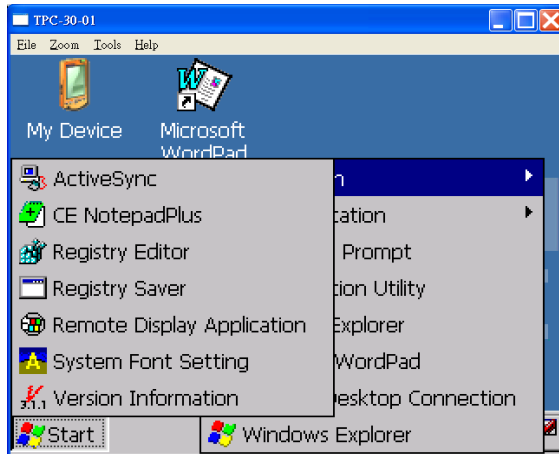


Figure 4.16: Remote Display Host Application

NotepadPlus

NotepadPlus is a text editor as shown in Figure 4.17.

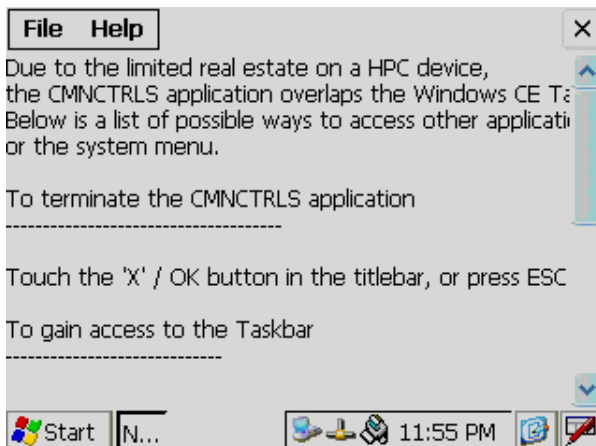


Figure 4.17: NotepadPlus

TPC Configurator

TPC Configurator is an integrated utility to configure the basic settings of the panel computer. Please refer to section 4.1.2.

TPC Version Information

TPC Version Information shows the version information of the operation system in the TPC-30/32 as shown in Figure 4.18.

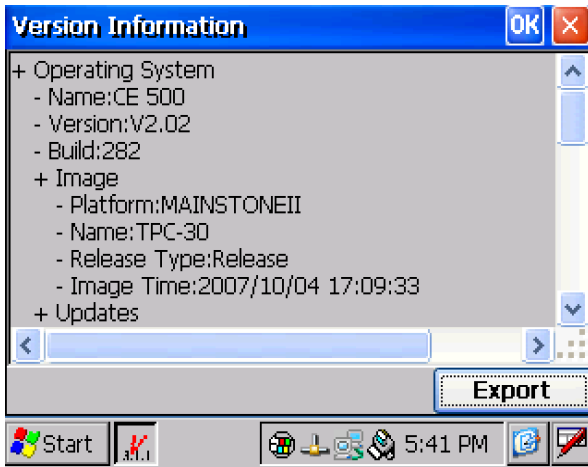


Figure 4.18: TPC Version Information

4.1.4 Other Utilities

There are other utilities provided in the panel computer. These utilities are command-line executed programs that do not have a graphical user interface. Please type the command names shown below in the command-line.

RegSave.exe [-s]:

Saves registry settings. If you use “RegSave.exe –s”, no message box is displayed whether you are successful or fail.

Reboot.exe:

Saves the registry settings and reboots the panel computer.

Screen.exe [on/off]:

Turns the display on/off. Use “Screen.exe on” to turn on and “Screen.exe off” to turn off the display.

Iesample.exe [-n] [-f] [ip address/ folder name]:

Open the Internet Explorer. Use "Iesample.exe -n" to close the scroll bar. Use "Iesamples.exe -f" to active the full screen. The three parameters can be blank.

4.2 Networking

4.2.1 Network via Ethernet

This section shows how to configure the Ethernet port of the TPC series properly. The procedure is listed below step by step.

Note: LAN transmission will crash when speed mode be changed.

1. Press Start in the task bar of Windows and select "Setting" -> "Networking and Dial-up connections".



Figure 4.19: Network and Dial-up Connections

2. A window that shows all available connections will pop up. Double click the icon that has the connection you want to configure. For example, double click DM9CE1 icon to configure.

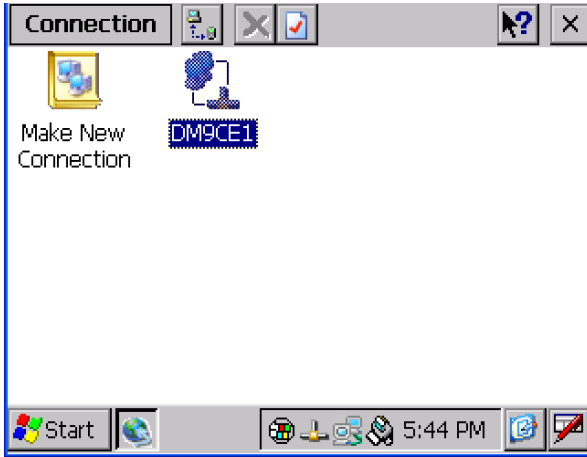


Figure 4.20: Selected Connection

3. Select the "IP Address" tab.

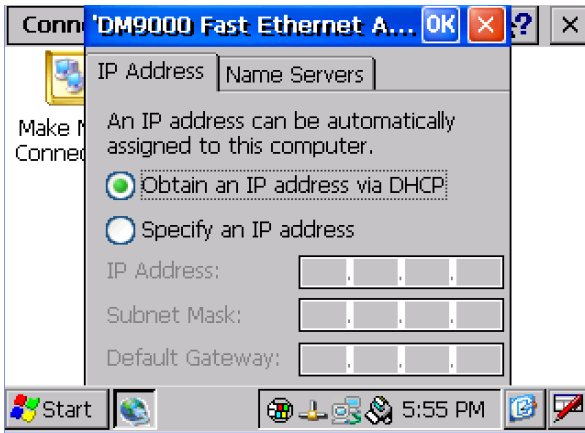


Figure 4.21: Setting IP Address

4. Select the “Name Server” tab.

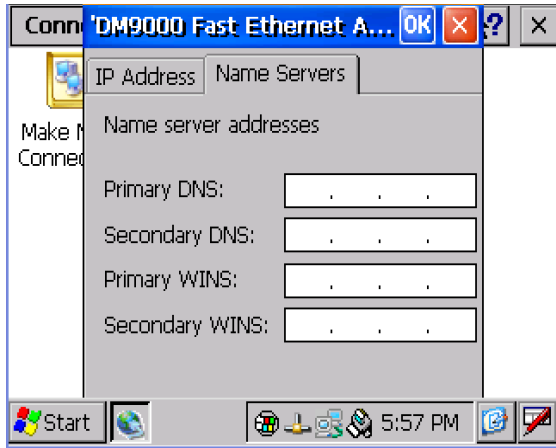


Figure 4.22: Setting Name Servers

Note Do NOT click the Next button at this time.

5. Press “Start” in of task bar of Windows and select “Run”. Execute “regsave” to save the registry settings to a storage card.

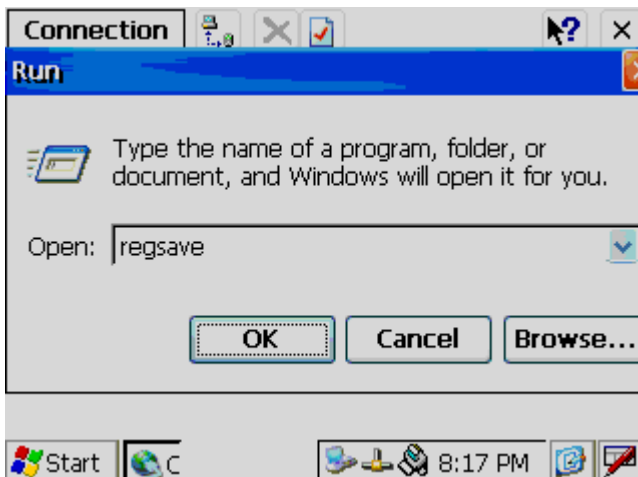


Figure 4.23: Save Registry

4.2.2 Network via Serial Port

This section introduces how to setup the connection between the TPC series and a host PC via Microsoft ActiveSync.

ActiveSync Setting Procedure

Insert the TPC CD into the CD-ROM of the host PC

Install the TPC software development kit for eVC++.

Install Microsoft ActiveSync.

Connect the host computer and TPC with a null modem cable (included in the package). Make sure the connection is solid on both RS-232 Serial ports.

Setup the communication environment of the TPC and the host

Setup the Communication Environment of TPC

Configure COM1 on the TPC. Press “Start” in Windows and select “Setting”-> “Control Panel”

Click the icon “PC Connection”



Figure 4.24: PC Connection

Click 'change...!' to select the COM port- serial 1. In this example, we use COM1 of TPC to connect with COM1 of the host.



Figure 4.25: PC Connection Properties

Please check the COM box and select your desired port from the list.

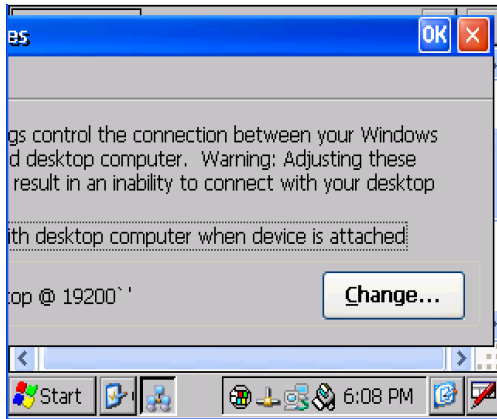


Figure 4.26: Change Connection

Press the 'enter' symbol from the keyboard to confirm the change.

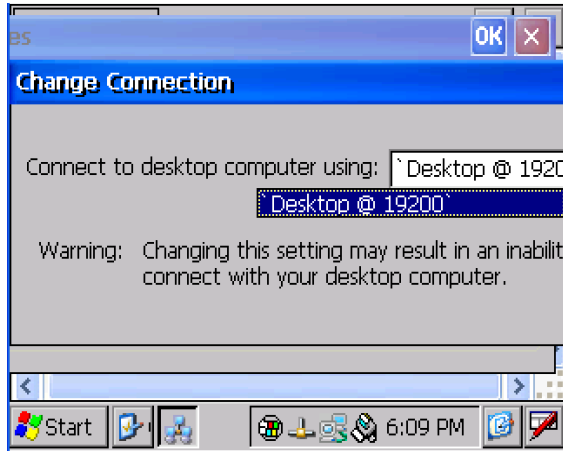


Figure 4.27: Change Connection

You can find the change is active. The connection is via serial1 - COM1.

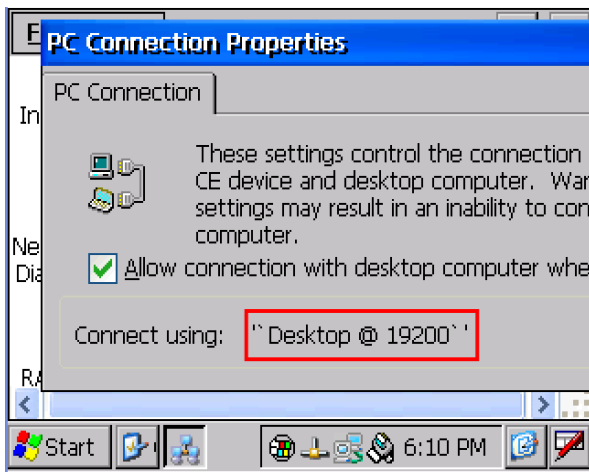


Figure 4.28: COM1 Set

Setting the Communication Environment of the Host

Double click the icon ActiveSync on your host computer.



Figure 4.29: Microsoft ActiveSync

Select “File”->”Connection Settings”

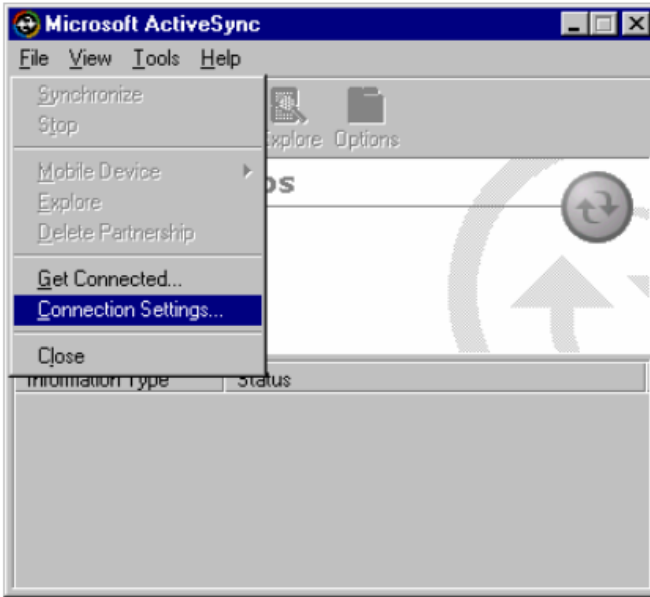


Figure 4.30: Select Connection Setting

Configure the connection setting.

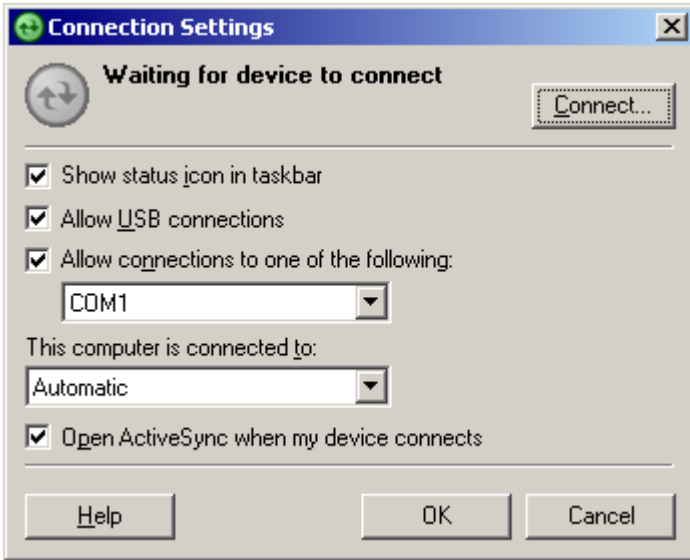


Figure 4.31: Configure Connection Setting

A window will pop up after you press “Get Connected”.

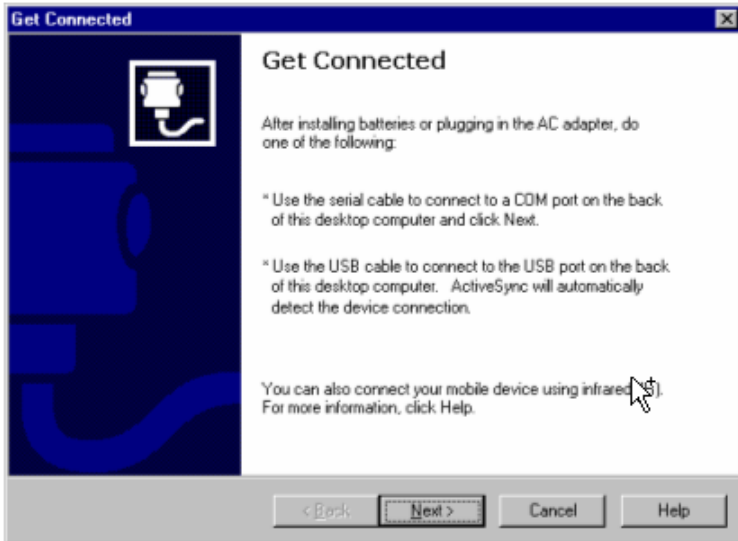


Figure 4.32: Get Connected

Please run “repllog.exe” on the TPC.

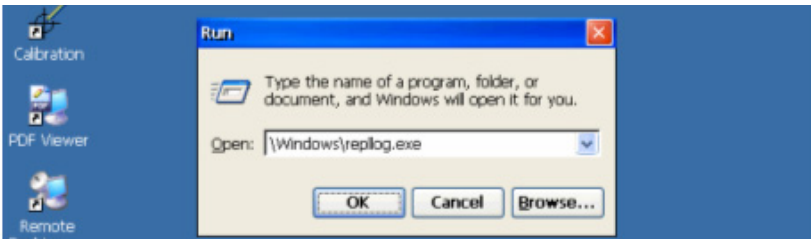


Figure 4.33: Run Repllog.exe on the TPC

Press the “Next” button on your host computer.

The message shown below will show on the TPC once the TPC and the host PC are connected.



Figure 4.34: Connection on the TPC

A window will pop up as shown below on the host computer, once the TPC and the host PC are connected. Select “No” and then press “Next”.

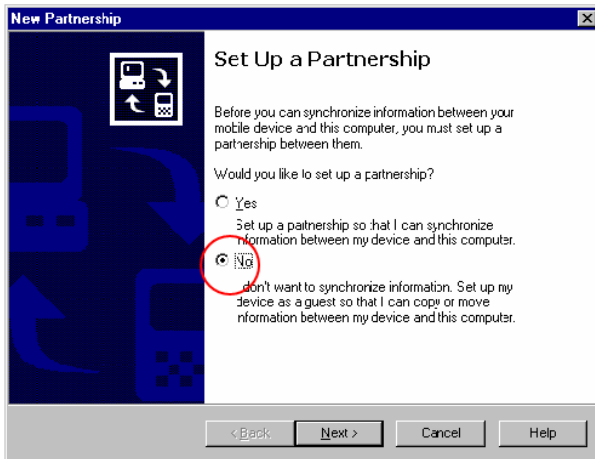


Figure 4.35: Connection on the Host PC

Select “Explore” in the Microsoft ActiveSync window, the window, Mobile Device, will pop up to display the file resources and information of TPC. For example, you could click the icon “My documents” to see the content of storage in TPC.

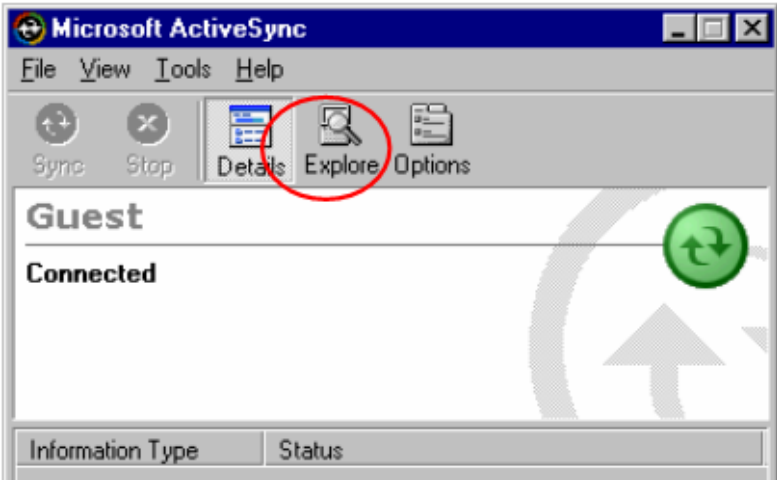


Figure 4.36: Explore the TPC

4.3 Application Program Development

4.3.1 System Requirements for Developers

These are the requirements to run Microsoft eMbedded Visual C++ 4.0.

- A desktop computer with a Pentium II-class processor, 450 MHz or faster.
- Microsoft Windows 2000 Professional SP4, Microsoft Windows 2000 Server SP2, or Microsoft Windows XP Professional.
- 96 MB (128 MB recommended) memory for Windows 2000 Professional or Windows XP Professional. 192 MB (256 MB recommended) memory for Windows 2000 Server.
- CD-ROM drive.
- VGA or higher-resolution monitor. A Super VGA (800 x 660 or larger) monitor is recommended.
- Mouse or compatible pointing device.
- 200 MB hard disk space.

Note

If you choose to install the Common files or Microsoft eMbedded Visual C++ 4.0 on a partition other than the system partition, the figure representing the amount of space required reflects only the amount of space for files being installed on that non-system partition. It does not reflect the total amount of space required to install the entire product. This is because some files must be installed on the system partition, regardless of where other files are installed.

4.3.2 Building Windows CE Runtime

Build the Windows CE runtime with the eMbedded Visual tools. This section demonstrates step by step how to develop a custom application.

1. Install Microsoft eMbedded Visual C++: The Microsoft eMbedded Visual C++ tool is a desktop development environment for creating applications and system components for Windows CE .NET-powered devices. This version features new capabilities such as C++ exception handling, Run Time Type Information (RTTI), and a plethora of new debugger functionalities. Before you begin to develop your application, you must install Microsoft eMbedded Visual C++ first
2. Insert the TPC CD into the CD-ROM in the host PC.
3. Install the TPC Software Development Kit for eMbedded Visual C++ from the support CD-ROM.
4. Install Microsoft ActiveSync from the support CD-ROM
5. Build the connection between the host and TPC via ActiveSync. For further information about ActiveSync, please refer to section 4.2.2.
6. Execute eMbedded Visual C++.
7. Select "File"->"New" to open a new project. Select your project type in the left side of the window and enter the new project name/location in the right side of the window.

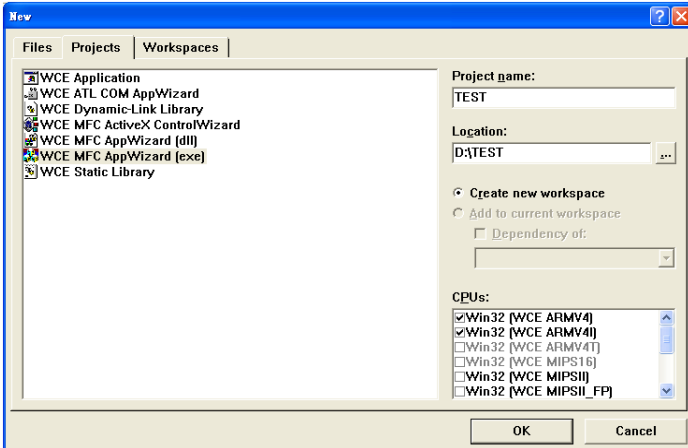


Figure 4.37: Starting a New Project

Note *The selected CPU type must be Win32 (WCE ARM V4) or Win32 (WCE ARMV4I).*

Select “ADVTPC” in the main window of embedded Visual C++.

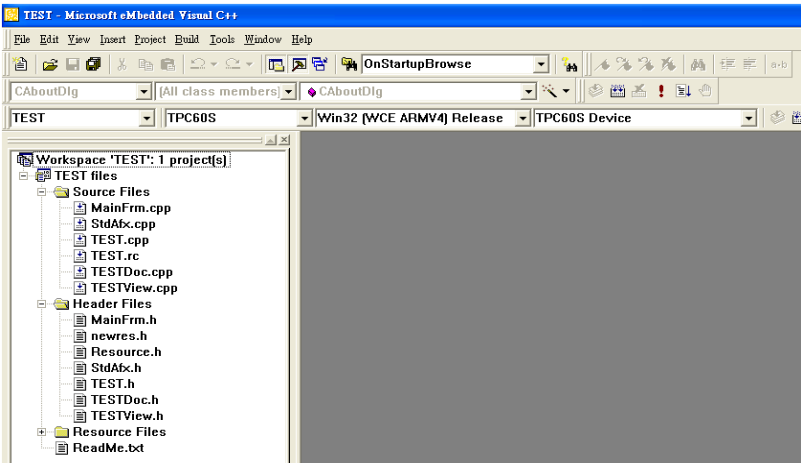


Figure 4.38: Selecting

After you complete the configuration procedure, you can start to develop your application. Press “Build” to compile your program to a .exe file and download it to TPC.

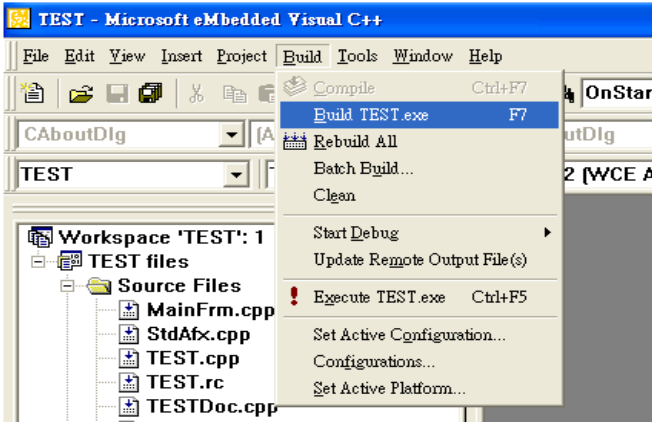


Figure 4.39: Compiling Your Program

APPENDIX
A

**Watchdog Timer
Programming**

Appendix A Watchdog Timer Programming

There is a built-in watchdog timer in the TPC-30/32 series. You can access it through the WIN32 API. TPC-30/32 panel computers provide a WDT driver to allow users to enable/disable the Watchdog timer. The driver name is “WDT1:”. Programmers must open this driver before using the resources. Then programmers can use DeviceIOControl functions to enable/disable Watchdog timer. The introduction below includes the DeviceIOControl, the definition of the parameter and an example.

A.1 DeviceIOControl

This function sends a control code directly to a specified device driver, causing the corresponding device to perform the specified operation.

```
BOOL DeviceIoControl(  
HANDLE hDevice,  
DWORD dwIoControlCode,  
LPVOID lpInBuffer,  
DWORD nInBufferSize,  
LPVOID lpOutBuffer,  
DWORD nOutBufferSize,  
LPDWORD lpBytesReturned,  
LPOVERLAPPED lpOverlapped );
```

Parameters:

- hDevice
[in] Handle to the device that is to perform the operation. Call the CreateFile function to obtain a device handle.
- dwIoControlCode
[in] Specifies the control code for the operation. This value identifies the specific operation to be performed and the type of device on which the operation is to be performed. No specific values are defined for the dwIoControlCode parameter. However, the writer of a custom device driver can define IOCTL_XXXX control codes, per the CTL_CODE macro. These control codes can then be advertised, and an application can use these control codes with DeviceIoControl to perform driver-specific functions.

- **lpInBuffer**
[in] Long pointer to a buffer that contains the data required to perform the operation. This parameter can be NULL if the `dwIoControlCode` parameter specifies an operation that does not require input data.

- **nInBufferSize**
[in] Size, in bytes, of the buffer pointed to by `lpInBuffer`.

- **lpOutBuffer**
[out] Long pointer to a buffer that receives the operation's output data. This parameter can be NULL if the `dwIoControlCode` parameter specifies an operation that does not produce output data.

- **nOutBufferSize**
[in] Size, in bytes, of the buffer pointed to by `lpOutBuffer`.

- **lpBytesReturned**
[out] Long pointer to a variable that receives the size, in bytes, of the data stored into the buffer pointed to by `lpOutBuffer`. The `lpBytesReturned` parameter cannot be NULL. Even when an operation produces no output data, and `lpOutBuffer` can be NULL, the `DeviceIoControl` function makes use of the variable pointed to by `lpBytesReturned`. After such an operation, the value of the variable is without meaning.

- **lpOverlapped**
[in] Ignored; set to NULL.

- **Return Values**
Nonzero indicates success. Zero indicates failure. To get extended error information, call `GetLastError`.

A.2 How to Use the Control Code

There are 6 control codes for the operation codes in the WDT driver.

A.2.1 IOCTL_WDT_ENABLE:

Enables the Watchdog timer on your application. By default, if the Watchdog timer is enabled, the WDT driver will automatically trigger itself after the specified period and your application does not need to trigger the Watchdog timer in this situation.

lpInBuffer : unused.

nInBufferSize: unused.

lpOutBuffer: unused.

nOutBufferSize: unused.

A.2.2 IOCTL_WDT_DISABLE:

Disables the Watchdog time on your application.

lpInBuffer : unused.

nInBufferSize: unused.

lpOutBuffer: unused.

nOutBufferSize: unused.

A.2.3 IOCTL_WDT_STROBE:

Triggers the Watchdog. If your application uses IOCTL_WDT_ENABLE to enable the Watchdog first and then sends IOCTL_WDT_REBOOT to the WDT driver, your application must trigger the Watchdog once during the Watchdog timer period. If your application has not triggered at the specified period, the device will reboot automatically.

lpInBuffer: unused.

nInBufferSize: unused.

lpOutBuffer: unused.

nOutBufferSize: unused.

A.2.4 IOCTL_WDT_GETTIMEOUT:

Gets the Watchdog time setting.

lpInBuffer: unused.

nInBufferSize: unused.

lpOutBuffer: The DWORD pointer to your Watchdog time setting. The Watchdog time setting is just a number. 0 means 2 seconds, 1 means 5 seconds, 2 means 10 seconds, 3 means 15 seconds, 4 means 30 seconds, others means 40 seconds. The default setting is 5 seconds.

nOutBufferSize: unused.

A.2.5 IOCTL_WDT_SETTIMEOUT:

Sets the Watchdog time setting.

lpInBuffer : The DWORD pointer to your Watchdog time setting. The Watchdog time setting is just a number. 0 means 2 seconds, 1 means 5 seconds, 2 means 10 seconds, 3 means 15 seconds, 4 means 30 seconds, others means 40 seconds. The default setting is 5 seconds.

nInBufferSize: unused.

lpOutBuffer: unused.

nOutBufferSize: unused.

A.2.6 IOCTL_WDT_REBOOT:

If you want your application to trigger the Watchdog by itself, please use IOCTL_WDT_REBOOT to notify the WDT driver. Otherwise, the WDT will trigger itself automatically.

lpInBuffer : unused.

nInBufferSize: unused.

lpOutBuffer: unused.

nOutBufferSize: unused.

A.3 Examples

```
#define WDT_CODE(ID) CTL_CODE(FILE_DEVICE_UNKNOWN,  
ID, METHOD_BUFFERED, FILE_ANY_ACCESS)  
  
#define IOCTL_WDT_ENABLE          WDT_CODE (0x900)  
#define IOCTL_WDT_DISABLE        WDT_CODE (0x901)  
#define IOCTL_WDT_STROBE         WDT_CODE (0x902)  
#define IOCTL_WDT_GET_TIMEOUT    WDT_CODE (0x903)  
#define IOCTL_WDT_SET_TIMEOUT    WDT_CODE (0x904)  
#define IOCTL_WDT_REBOOT         WDT_CODE (0x905)
```

// For compatibility reasons, you can define IOCTL as below:

```
// #define IOCTL_WDT_ENABLE 0x1001  
// #define IOCTL_WDT_DISABLE 0x1002  
// #define IOCTL_WDT_STROBE 0x1003  
// #define IOCTL_WDT_GETTIMEOUT 0x1004  
// #define IOCTL_WDT_SETTIMEOUT 0x1005  
// #define IOCTL_WDT_REBOOT 0x1006
```

```
HANDLE m_hWDT=NULL;
```

```
TCHAR szClassName[66];
```

```
// assign the WDT driver name
```

```
wsprintf(szClassName, TEXT("WDT1:"));
```

```
// Open the WDT driver
```

```
m_hWDT = CreateFile(szClassName, GENERIC_READ  
GENERIC_WRITE, 0, NULL, OPEN_EXISTING,  
FILE_ATTRIBUTE_NORMAL, NULL);
```

```
if ( m_hWDT == INVALID_HANDLE_VALUE ) {
```

```
    DebugMsg(CString("WDT driver fail"));
```

```
    return;
```

```
}
```

```

DWORD dwTemp;
DWORD nIndex=2;
// Set the Watchdog Timer as 10 seconds. Number 2 means 10 seconds.
DeviceIoControl(m_hWDT, IOCTL_WDT_SET_TIMEOUT, &nIndex,
sizeof(nIndex), NULL, 0, &dwTemp, NULL);
// Enable the Watchdog timer
DeviceIoControl(m_hWDT, IOCTL_WDT_ENABLE, NULL, 0, NULL,
0, &dwTemp, NULL);
While (1) {
    // do your job here...
    Sleep(8000);
    DeviceIoControl(m_hWDT, IOCTL_WDT_STROBE, NULL,0,
NULL, 0, &dwTemp, NULL);
}
DeviceIoControl(m_hWDT, IOCTL_WDT_DISABLE, NULL, , NULL,
0, &dwTemp, NULL);
CloseHandle(m_hWDT);

```


APPENDIX **B**

Fuse Specifications

Appendix B Fuse Specifications

B.1 Fuse Specifications

Rating: 125 VAC, 5A

Note *The fuse is set to break if the input voltage exceeds 28 VDC.*

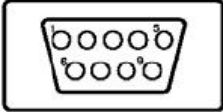
APPENDIX

C

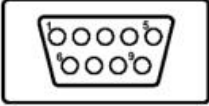
Pin Assignments

Appendix C Pin Assignments

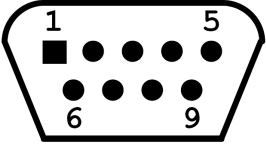
C.1 RS-232 Pin Assignments

Pin No.	Description	
Pin 1	DCD	
Pin 2	Rx	
Pin 3	Tx	
Pin 4	DTR	
Pin 5	GND	
Pin 6	DSR	
Pin 7	RTS	
Pin 8	CTS	
Pin 9	RI	

C.2 RS-485 Pin Assignment

Pin No.	Description	
Pin 1	No Connection	
Pin 2	DATA +	
Pin 3	DATA -	
Pin 4	No Connection	
Pin 5	GND	
Pin 6	No Connection	
Pin 7	No Connection	
Pin 8	No Connection	
Pin 9	No Connection	

C.3 CAN-Bus Pin Assignments

Pin No.	Description	
Pin 1	No Connection	
Pin 2	CAN -	
Pin 3	No Connection	
Pin 4	No Connection	
Pin 5	GND	
Pin 6	No Connection	
Pin 7	CAN +	
Pin 8	No Connection	
Pin 9	No Connection	

APPENDIX **D**

Visual Settings

Appendix D Visual Settings

There are two powerful and friendly utilities included to extend the visual capabilities of TPC-30/32. The two utilities are used to set the font size and rotate the screen.

D.1 Font Setting

Please go to start->programs->advantech->system font setting.

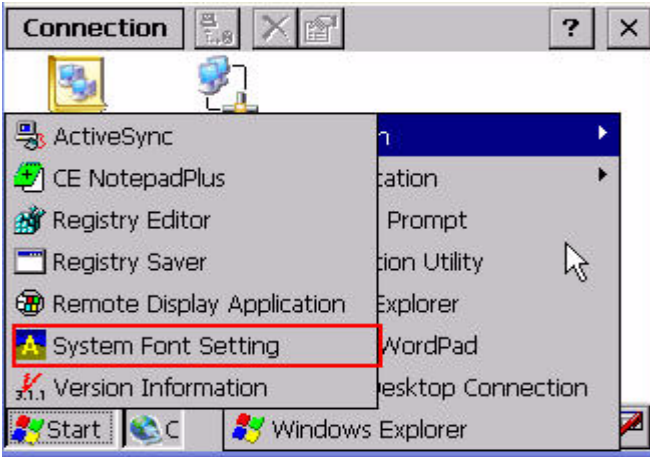


Figure D.1: Font Setting

TPC-30/32 provides two font settings – normal and small.

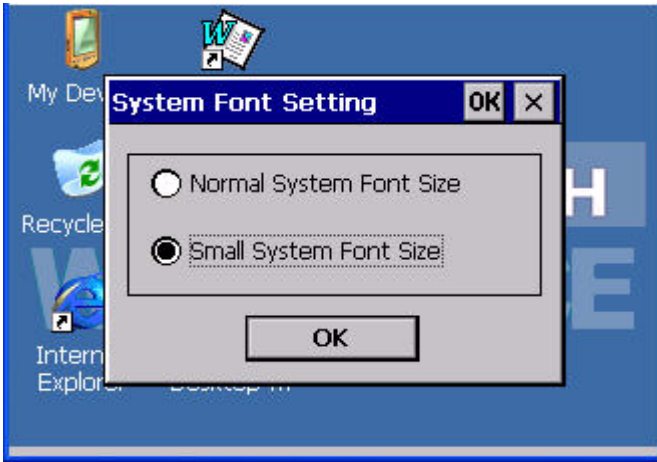


Figure D.2: Small Font Setting



Figure D.3: Change Font Setting



Figure D.4: Small Font Display

D.2 Screen Rotation

Please go to start->setting->control panel-> screen rotation as below.



Figure D.5: Screen Rotation

Please select how you want the view display.

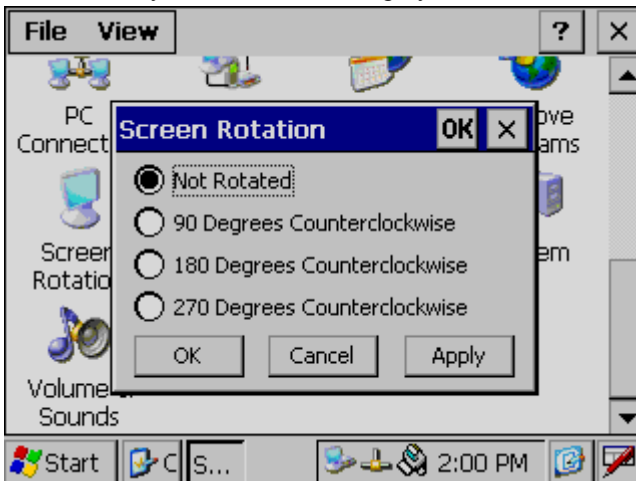


Figure D.6: Screen Rotation Options

This screen is rotated 90 degrees in the example.

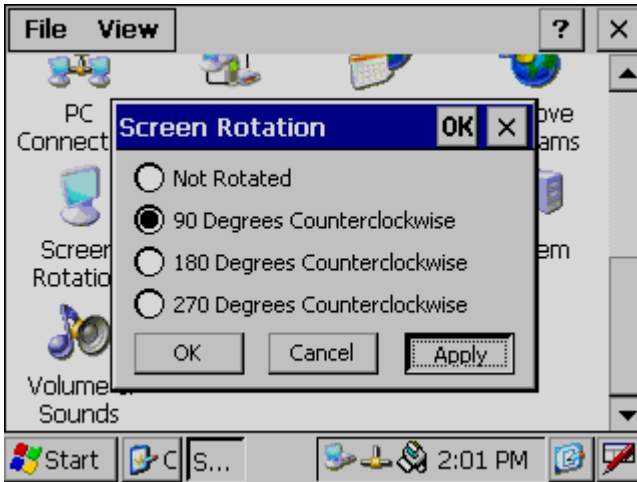


Figure D.7: 90 Degrees Rotation

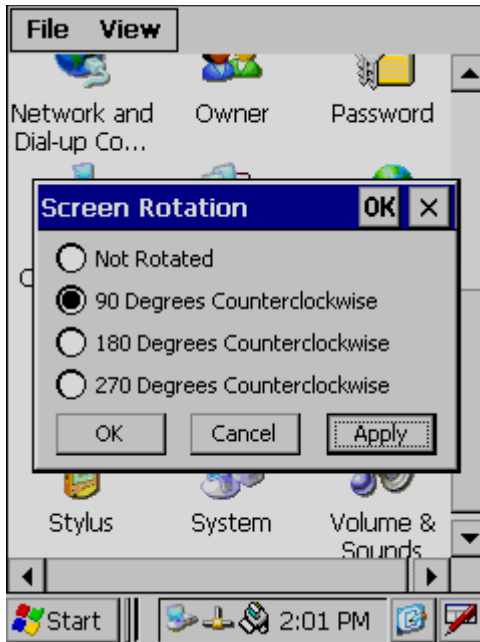


Figure D.8: Portrait Rotation

APPENDIX

E

TPC-30T Update Guide

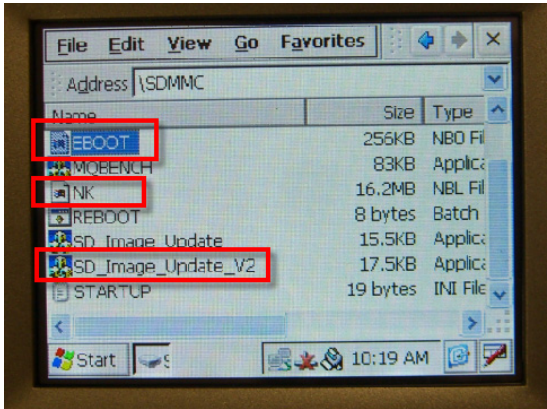
Appendix E TPC-30T Update Guide

E.1 Updating Image & Bootloader

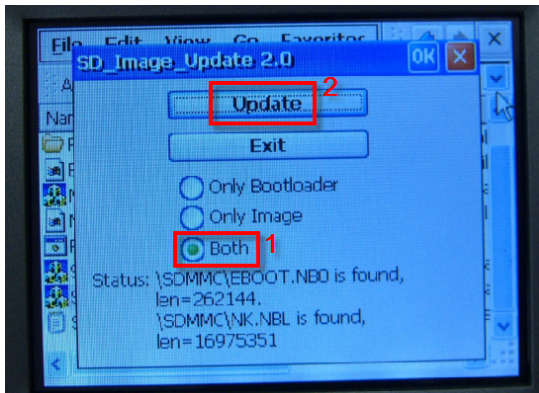
To update the image & bootloader for the TPC-30T, follow this guide:

There are three items are needed for image and bootloader update.

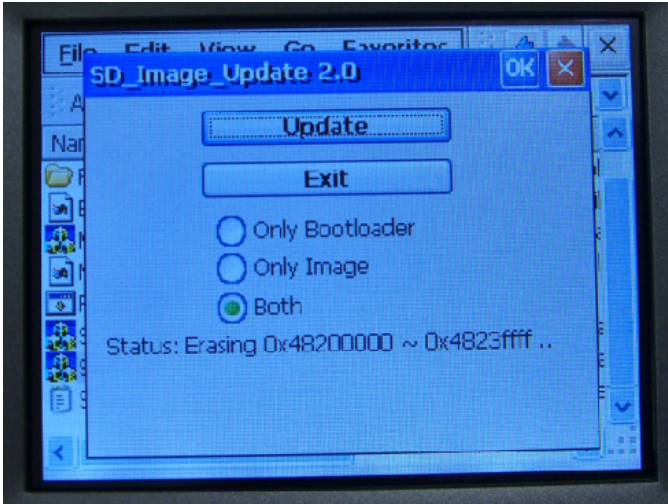
To complete this, you'll need to copy them onto an SD card.



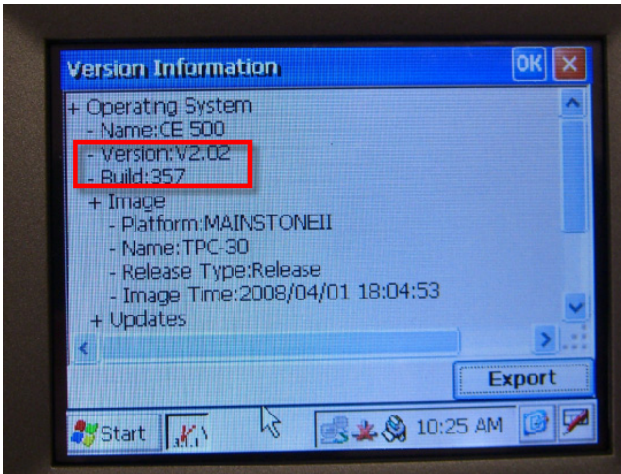
1. Plug an SD card into the SD slot.
2. Run SD_Image_Update 2.0 utility. Select “Both” items then click “Update” item.



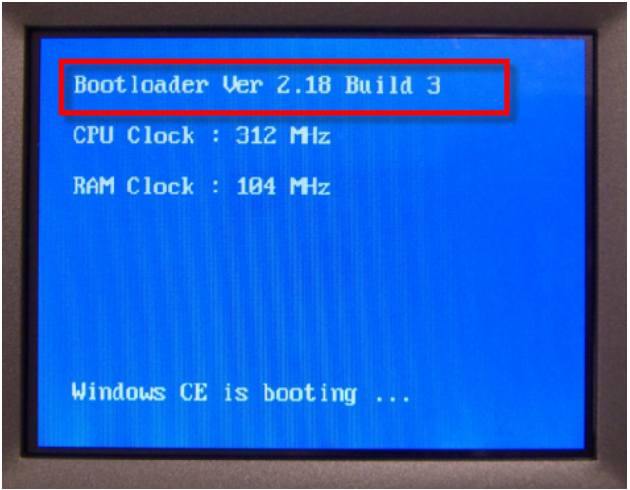
Updating will take around 3 minutes.



3. After a successful update, the system will reboot and become black.
4. The system is initializing and will take around 3 minutes.
5. After initial success, the new image will be implemented. You can check the image version under *Version Information*.



6. The Boot Loader version can be checked at system power on stage.



APPENDIX

F

COM Port Settings

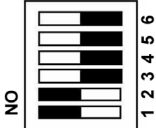
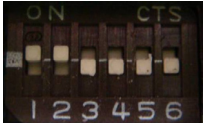

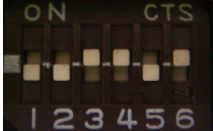
Appendix F COM Port Settings

The serial port on the TPC-30T is adjustable. It can be set to RS-232, RS-485 or CAN-Bus.

TPC-30T: Serial Port default as RS-232

TPC-32T: Serial Port default as CAN-Bus

The following is the COM switch setting guide:

Mode	S1
RS-232	
	
RS-485	
	
CAN-Bus	