

ER-OLEDM028-1 Series

OLED Display User Manual

EastRising Technology Co., Limited

Attention:

- A. Click "CONTENTS" list could be directed to the detail page. Click "Return to CONTENTS" could be directed to CONTENTS Page.
- B. Some specifications of IC are not listed in this manual. Please refer to the IC manual for more details.
- C. The drawing for related schematic drawing, demo code is all available, please download from our web.
- D. Please pay more attention to "INSPECTION CRITERIA" in this manual. We assume you already agree with these criterions when you place an order with us. No more recommendations.

REV	DESCRIPTION	RELEASE DATE
1.0	Preliminary Release	May-04-2013

CONTENTS

1. ORDERING INFORMATION	04
1.1 Order Number	04
1.2 Image	04
2. ATTRIBUTES	05
2.1 Display Attribute	05
2.2 Mechanical Attribute	05
2.3 Electrical Attribute	05
2.4 Optical Attribute	05
3. OUTLINE DRAWING	06
4. ELECTRICAL SPEC	07
4.1 Pin Configuration	07
4.2 Absolute Maximum Ratings	09
4.3 Electrical Characteristics	09
5. INSPECTION CRITERIA	10
5.1 Acceptable Quality Level	10
5.2 Definition of Lot	10
5.3 Condition of Cosmetic Inspection	10
5.4 Module Cosmetic Criteria	11
5.5 Screen Cosmetic Criteria (Non-Operating)	13
5.6 Screen Cosmetic Criteria (Operating)	14
6. PRECAUTIONS FOR USING	16
6.1 Handling Precautions	16
6.2 Power Supply Precautions	17
6.3 Operating Precautions	17
6.4 Mechanical/Environmental Precautions	17
6.5 Storage Precautions	17
6.6 Others	17

7. USING DISPLAY MODULES	18
7.1 Liquid Crystal Display Modules	18
7.2 Installing DISPLAY Modules	18
7.3 Precaution for Handling Modules	19
7.4 Electro-Static Discharge Control-	19
7.5 Precaution for Soldering to EastRising LCM-	19
7.6 Precaution for Operation	20
7.7 Limited Warranty	20
7.8 Return Policy	20

1. ORDERING INFORMATION

1.1 ER-OLEDM032-1 Series Table

[>>Return to CONTENTS](#)

Item Name	Part Number(Order Number)	Appearance
OLED Display	ER-OLEDM028-1Y	Yellow on Black
OLED Display	ER-OLED032-1B	Blue on Black
Pin Header	ER-PHD16-1	N/A

1.2 Image

[>>Return to CONTENTS](#)



↑ ER-OLED028-1Y



↑ ER-OLED028-1B



↑ ER-PHD16-1

2. ATTRIBUTES

2.1 Display Attributes

[>>Return to CONTENTS](#)

ITEM	STANDARD VALUE	UNIT
Dot matrix	256x64	--
Display Connector	Pin Header	--
Operating Temperature	-20 ~ +70	℃
Storage Temperature	-30 ~ +80	℃
Touch Panel Optional	N/A	--
Font Chip Optional	N/A	--
Sunlight Readable	No	--

2.2 Mechanical Attributes

[>>Return to CONTENTS](#)

ITEM	STANDARD VALUE	UNIT
Diagonal Size	2.80	inch
Outline Dimension	97.0(w)x32.5(H)x6.3Max(T)	mm
Visual Area	71.104(W)x19.264(H)	mm
Active Area	69.104(W)x17.264(H)	mm
Dot Size	0.254(W)x0.254(H)	mm
Dot Pitch	0.27(W)x0.27(H)	mm
Net Weight	25	g

2.3 Electrical Attributes

[>>Return to CONTENTS](#)

ITEM	STANDARD VALUE	UNIT
IC Package	COB	--
Controller	SSD1322	--
Interface	8-Bit 68xx/80xx Parallel、SPI	--

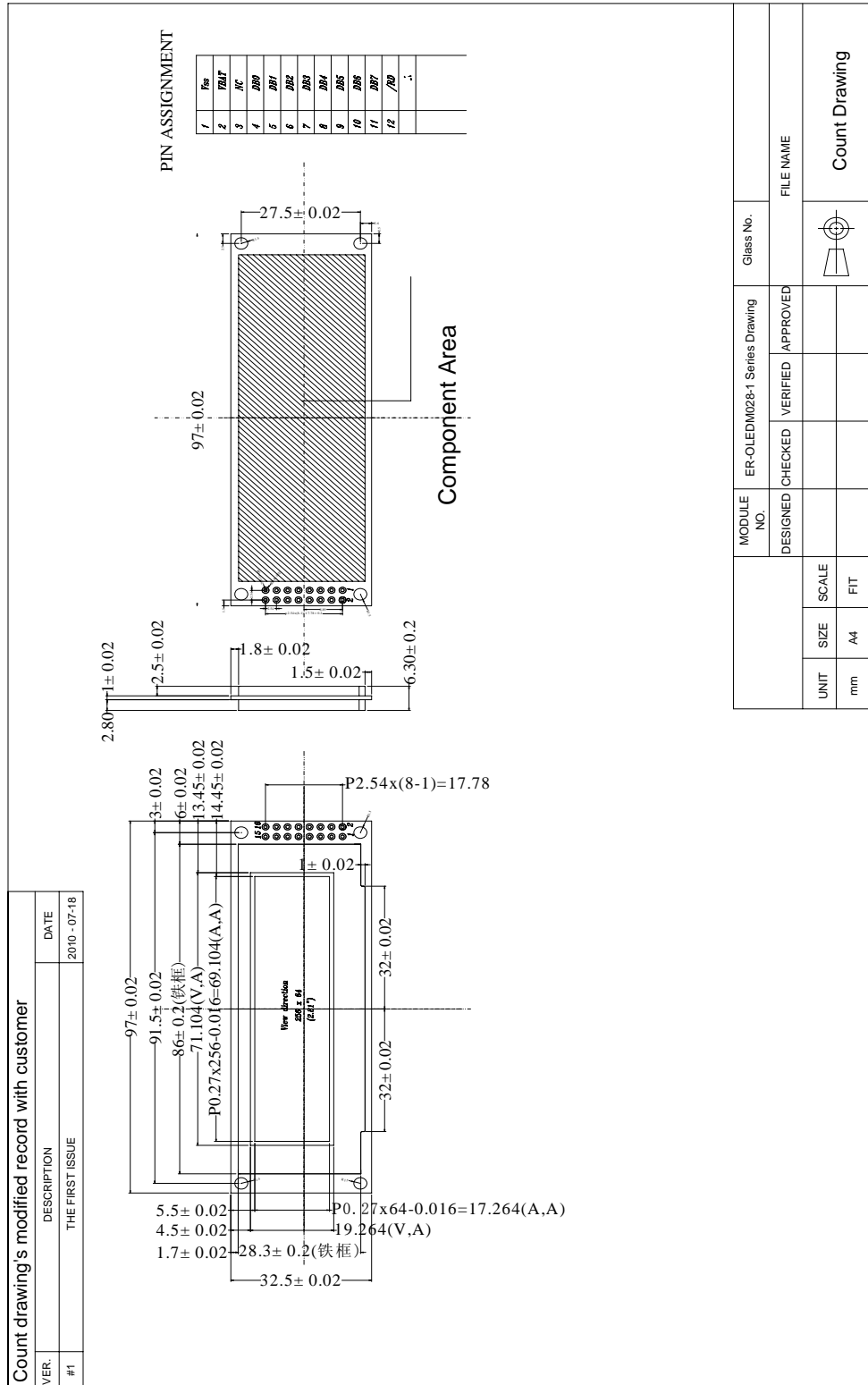
2.4 Optical Attributes

[>>Return to CONTENTS](#)

ITEM	STANDARD VALUE	UNIT
DISPLAY Type	OLED Display	--
DISPLAY Color	Refer to Page 4	--
Duty	1/64	--

3. OUTLINE DRAWING

>>Return to CONTENTS



4. ELECTRICAL SPEC

4.1 Pin Configuration

[>>Return to CONTENTS](#)

Pin No	Symbol	I/O	Description
1	Vss	P	Ground of Logic Circuit This is a ground pin,It also acts as a reference for the logic pins,It must be connected to external ground.
2	VBAT	3.3-5V	Power Supply for Display Module Circuit This is a Voltage supply pin.It Connected to external Source
3	NC	-	Please let it Float.
4-11	DB0-DB7	I/O	Host Data Input/Output Bus These pins are 8-bit bi-directional data bus to be connected to the microprocessor's data bus,When serial mode is selected,D1 will be the serial data input SDIN and DO will be the serial clock input SCLK.
12	/RD	I	Read/Wirte Enable or Read This pin is MCU interface input,When interfacing to an 68xx-series microprocessor,this pin will be used as the Enable(E) signal,Read/Write operation is initiated when this pin is pulled high and the CS is pulled low,When connecting to an 80xx-microprocessor,this pin receives the Read(RD) signal,Data read operation is initiated when this pin is pulled low CS is pulled low.
13	/WR	I	Read/Write Select or Write This pin is MCU interface input,When interfacing to an 68xx-series microprocessor,this pin will be used as Read/Write(R/W) selection input,Pull this pin to "High" for read mode and pull it to "low" for write mode,When 80xx interface mode is selected,this pin will be the write(WR) input,Data write operation is initiated when this pin is pulled low and the CS is pulled low.

Pin No	Symbol	I/O	Description
14	/DC	I	<p>Data/Command Control</p> <p>This pin is Data/Command control pin,When the pin is pulled high,the input at D7~D0 is treated as display data,When the pin is pulled low,the input at D7~D0 will be transferred to the command register.For detail relationship to MCU interface signals,please refer to the Timing Characteristics Diagrams.</p>
15	/Reset	I	<p>Power Reset for Controller and Driver</p> <p>This pin is reset signal input,When the pin is low,initialization of the chip is executed.</p>
16	/CS	I	<p>Chip Select</p> <p>This pin is the chip select input,The chip is enabled for MCU communication only when CS# is pulled low.</p>

4.2 Absolute Maximum Ratings

[>>Return to CONTENTS](#)

ITEM	SYMBOL	MIN.	MAX.	UNIT	NOTES
Power Supply Voltage	VBAT	3.0	+5.5	V	-
Logic signal voltage	VDDIO	2.5	3.3	V	1,2
Driver Supply voltage	Vcc	0	15	V	1,2
Vcc Supply Current	Icc	-	55	mA	1,2
operating temperature	Top	-40	+85	° C	-
storage temperature	TST	-45	+90	° C	-
Humidity	RH	-	90%(Max60C)	RH	-

Note 1: All the above voltages are on the basis of “VSS = 0V”.

2: When this module is used beyond the above absolute maximum ratings, permanent breakage of the module may occur. Also, for normal operations, it is desirable to use this module under the conditions according to Section 4.3.“Electrical Characteristics”. If this module is used beyond these conditions, malfunctioning of the module can occur and the reliability of the module may deteriorate.

4.3 Electrical Characteristics

[>>Return to CONTENTS](#)

ITEM	SYMBOL	MIN.	TYP.	MAX.	UNIT
Power supply voltage	VBAT(Not1)	3.3	-	5.0	V
Logic signal voltage	VDDIO(Not2)	2.8	-	3.3	
Input voltage'H'level	VIH	0.8xVDDIO	-	VDDIO	V
Input voltage'L'level	VIL	0	-	0.2xVDDIO	V
Logic Current	IVBAT (Not3)	-	250	--	mA
Display Voltage	VCC(Not2)	11.5	12.0	12.5	V
Brightness(Yellow)	Lbr	60	90	-	Cd/m2
C.I.E.(Yellow)	(X)	0.44	0.48	0.52	
	(Y)	0.46	0.50	0.54	
Dark Room Contrast	CR	-	>2000:1	-	
View Angle		>160	-	-	degree

Note1: This is a voltage supply pin. It must be connected to external source

Note2: From to internally DC/DC Circuit. No need external supply.

Note3: VDD=3.3V, VCC=12.0V(VDD, VCC Supply by the module internal generate) 100% Display Area Turn on.

5. INSPECTION CRITERIA

5.1 Acceptable Quality Level

[>>Return to CONTENTS](#)

Each lot should satisfy the quality level defined as follows

PARTITION	AQL	DEFINITION
A. Major	0.4%	Functional defective as product
B. Minor	1.5%	Satisfy all functions as product but not satisfy cosmetic standard

5.2 Definition of Lot

One lot means the delivery quantity to customer at one time.

5.3 Condition of Cosmetic Inspection

[>>Return to CONTENTS](#)

◆ INSPECTION AND TEST

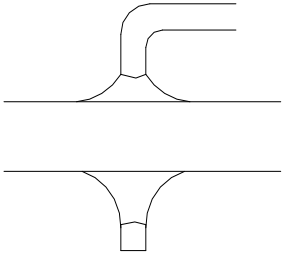
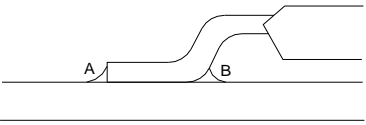
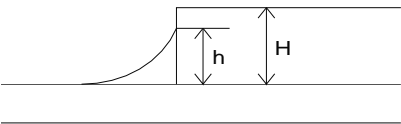
- FUNCTION TEST
- APPEARANCE INSPECTION
- PACKING SPECIFICATION

◆ INSPECTION CONDITION

- Put under the lamp (20w \pm 2) at a distance 100mm from
- Tilt upright 45 degree by the front (back) to inspect DISPLAY appearance.

◆ AQL INSPECTION LEVEL

- SAMPLING METHOD: MIL-STD-105D
- SAMPLING PLAN: SINGLE
- MAJOR DEFECT: 0.65% (MAJOR)
- MINOR DEFECT: 2.5% (MINOR)
- GENERAL LEVEL: II/NORMAL

NO.	Item	Judgment Criterion	Partition
1	Difference in Spec.	None allowed	Major
2	Pattern Peeling	No substrate pattern peeling and floating	Major
3	Soldering defects	No soldering missing	Major
		No soldering bridge	Major
		No cold soldering	Minor
4	Resist flaw on substrate	Invisible copper foil(\varnothing 0.5mm or more)on substrate pattern	Minor
5	Accretion of metallic Foreign matter	No soldering dust	Minor
		No accretion of metallic foreign matters(Not exceed \varnothing 0.2mm)	
6	Stain	No stain to spoil cosmetic badly	Minor
7	Plate discoloring	No plate fading,rusting and discoloring	Minor
8	Solder amount	<p>a. Soldering side of PCB</p> <p>Solder to form a 'Filet' all around the lead. Solder should not hide the lead form perfectly.(too much)</p> <p>b.Components side (In case of 'Through Hole PCB')</p> <p>Solder to reach the Components side of PCB</p> 	Minor
	2.Flat packages	<p>Either 'toe'(A) or 'heel' (B) of the lead to be covered by 'Filet'</p>  <p>Lead form to be assume over Solder.</p>	Minor
	3.Chips	<p>$(3/2) H \geq h \geq (1/2)H$</p> 	Minor

9	Backlight defects	1.Light fails or flickers.(Major) 2. Color and luminance do not correspond to specifications. (Major) 3.Exceeds standards for display's blemishes, foreign matter, dark lines or scratches.(Minor)	See list ←
10	PCB defects	Oxidation or contamination on connectors.* 2. Wrong parts, missing parts, or parts not in specification.* 3.Jumpers set incorrectly.(Minor) 4.Solder(if any)on bezel,LED pad,zebra pad,or screw hole pad is not smooth.(Minor) *Minor if display functions correctly.Major if the display fails.	See list ←
11	Soldering defects	1. Unmelted solder paste. 2. Cold solder joints,missing solder connections,or oxidation.* 3. Solder bridges causing short circuits.* 4. Residue or solder balls. 5. Solder flux is black or brown. *Minor if display functions correctly.Major if the display fails.	Minor

5.5 Screen Cosmetic Criteria (Non-Operating)

[>>Return to CONTENTS](#)

No.	Defect	Judgment Criterion	Partition	
1	Spots	In accordance with Screen Cosmetic Criteria (Operating) No.1.	Minor	
2	Lines	In accordance with Screen Cosmetic Criteria (Operation) No.2.	Minor	
3	Bubbles in Polarizer		Minor	
		Size: d mm		Acceptable Qty in active area
		d≦0.3		Disregard
		0.3<d≦1.0		3
		1.0<d≦1.5		1
1.5<d	0			
4	Scratch	In accordance with spots and lines operating cosmetic criteria, When the light reflects on the panel surface, the scratches are not to be remarkable.	Minor	
5	Allowable density	Above defects should be separated more than 30mm each other.	Minor	
6	Coloration	Not to be noticeable coloration in the viewing area of the DISPLAY panels. Back-lit type should be judged with back-lit on state only.	Minor	
7	Contamination	Not to be noticeable.	Minor	

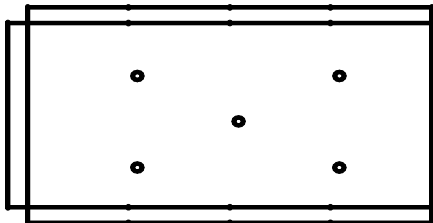
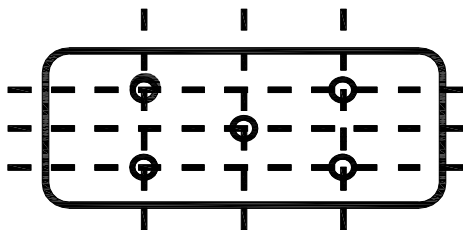
5.6 Screen Cosmetic Criteria (Operating)

[>>Return to CONTENTS](#)

No.	Defect	Judgment Criterion	Partition	
1	Spots	A) Clear	Minor	
		Size:d mm		Acceptable Qty in active area
		d≦0.1		Disregard
		0.1<d≦0.2		6
		0.2<d≦0.3		2
		0.3<d		0
		Note: Including pin holes and defective dots which must be within one pixel Size.		
		B) Unclear		
Size:d mm	Acceptable Qty in active area			
d≦0.2	Disregard			
0.2<d≦0.5	6			
0.5<d≦0.7	2			
0.7<d	0			
2	Lines	A) Clear	Minor	
		<div><div><div><div><div></div><div>L 5.0</div></div><div><div></div><div>2.0</div></div></div><div><div><div></div><div>∞</div></div><div><div></div><div>(6)</div></div><div><div></div><div>(0)</div></div></div><div><div><div></div><div>0.02</div></div><div><div></div><div>0.05</div></div><div><div></div><div>0.1</div></div></div><div><div></div><div>See No.1</div></div><div><div></div><div>W</div></div></div></div> <div>Note: () – Acceptable Qty in active area L - Length (mm) W -Width(mm) ∞-Disregard</div> <div>B) Unclear</div> <div><div><div><div><div></div><div>L 10.0</div></div><div><div></div><div>2.0</div></div></div><div><div><div></div><div>∞</div></div><div><div></div><div>(6)</div></div><div><div></div><div>(0)</div></div></div><div><div><div></div><div>0.05</div></div><div><div></div><div>0.3</div></div><div><div></div><div>0.5</div></div></div><div><div></div><div>See No.1</div></div><div><div></div><div>W</div></div></div></div> <div>Note: () – Acceptable Qty in active area L - Length (mm) W -Width(mm) ∞-Disregard</div>		

‘Clear’ = The shade and size are not changed by Vo.

‘Unclear’ = The shade and size are changed by Vo.

No.	Defect	Judgment Criterion	Partition
3	Rubbing line	Not to be noticeable.	
4	Allowable density	Above defects should be separated more than 10mm each other.	Minor
5	Rainbow	Not to be noticeable.	Minor
6	Dot size	To be 95%~105% of the dot size (Typ.) in drawing. Partial defects of each dot (ex.pin-hole) should be treated as 'spot'. (see Screen Cosmetic Criteria (Operating) No.1)	Minor
7	Brightness (only back-lit Module)	Brightness Uniformity must be $B_{MAX}/B_{MIN} \leq 2$ - B_{MAX} : Max.value by measure in 5 points - B_{MIN} : Min.value by measure in 5 points Divide active area into 4 vertically and horizontally. Measure 5 points shown in the following figure. 	Minor
8	Contrast Uniformity	Contrast Uniformity must be $B_{mAX}/B_{mIN} \leq 2$ Measure 5 points shown in the following figure. Dashed lines divide active area into 4 vertically and horizontally. Measuring points are located at the inter-sections of dashed line.  Note: B_{MAX} – Max.value by measure in 5 points. B_{MIN} – Min.value by measure in 5 points. O – Measuring points in $\varnothing 10\text{mm}$.	Minor

Note:

- (1) Size : $d = (\text{long length} + \text{short length}) / 2$
- (2) The limit samples for each item have priority.
- (3) Complexed defects are defined item by item, but if the number of defects is defined in above table, the total number should not exceed 10.

(4) In case of 'concentration', even the spots or the lines of 'disregarded' size should not be allowed. Following three situations

Should be treated as 'concentration'.

- 7 or over defects in circle of \varnothing 5mm.
- 10 or over defects in circle of \varnothing 10mm
- 20 or over defects in circle of \varnothing 20mm

6. PRECAUTIONS FOR USING

6.1 Handling Precautions

>>Return to CONTENTS

- ◆ This device is susceptible to Electro-Static Discharge (ESD) damage. Observe Anti-Static precautions.
- ◆ EastRising display panel is made of glass. Do not subject it to a mechanical shock by dropping it or impact.
- ◆ If EastRising display panel is damaged and the liquid crystal substance leaks out, be sure not to get any in your mouth. If the substance contacts your skin or clothes, wash it off using soap and water.
- ◆ Do not apply excessive force to the EastRising display surface or the adjoining areas since this may cause the color tone to vary.
- ◆ The polarizer covering the EastRising display surface of the DISPLAY module is soft and easily scratched. Handle this polarizer carefully.
- ◆ If EastRising display surface becomes contaminated, breathe on the surface and gently wipe it with a soft dry cloth. If it is heavily contaminated, moisten cloth with one of the following Isopropyl or alcohol.
- ◆ Solvents other than those above-mentioned may damage the polarizer. Especially, do not use the Water.
- ◆ Exercise care to minimize corrosion of the electrode. Corrosion of the electrodes is accelerated by water droplets, moisture condensation or a current flow in a high-humidity environment.
- ◆ Install the EastRising DISPLAY Module by using the mounting holes. When mounting the DISPLAY module make sure it is free of twisting, warping and distortion. In particular, do not forcibly pull or bend the cable or the backlight cable.
- ◆ Do not attempt to disassemble or process EastRising DISPLAY module.
- ◆ NC terminal should be open. Do not connect anything.
- ◆ If the logic circuit power is off, do not apply the input signals.
- ◆ To prevent destruction of the elements by static electricity, be careful to maintain an optimum work environment.
 - Be sure to ground the body when handling EastRising DISPLAY modules.
 - Tools required for assembling, such as soldering irons, must be properly grounded.
 - To reduce the amount of static electricity generated, do not conduct assembling and other work under dry conditions.
 - The DISPLAY module is coated with a film to protect the display surface. Exercise care when peeling off this protective film since static electricity may be generated.

6.2 Power Supply Precautions

>>Return to CONTENTS

- ◆ Identify and, at all times, observe absolute maximum ratings for both logic and LC drivers. Note that there is some variance between models.
- ◆ Prevent the application of reverse polarity to VDD and VSS, however briefly.
- ◆ Use a clean power source free from transients. Power-up conditions are occasionally jolting and may exceed the maximum ratings of EastRising modules.
- ◆ The VDD power of EastRising module should also supply the power to all devices that may access the display. Don't allow the data bus to be driven when the logic supply to the module is turned off.

6.3 Operating Precautions

>>Return to CONTENTS

- ◆ DO NOT plug or unplug EastRising module when the system is powered up.
- ◆ Minimize the cable length between EastRising module and host MPU.
- ◆ For models with backlights, do not disable the backlight by interrupting the HV line. Unload inverters produce voltage extremes that may arc within a cable or at the display.
- ◆ Operate EastRising module within the limits of the modules temperature specifications.

6.4 Mechanical/Environmental Precautions

>>Return to CONTENTS

- ◆ Improper soldering is the major cause of module difficulty. Use of flux cleaner is not recommended as they may seep under the electrometric connection and cause display failure.
- ◆ Mount EastRising module so that it is free from torque and mechanical stress.
- ◆ Surface of the DISPLAY panel should not be touched or scratched. The display front surface is an easily scratched, plastic polarizer. Avoid contact and clean only when necessary with soft, absorbent cotton dampened with petroleum benzene.
- ◆ Always employ anti-static procedure while handling EastRising module.
- ◆ Prevent moisture build-up upon the module and observe the environmental constraints for storage tem
- ◆ Do not store in direct sunlight
- ◆ If leakage of the liquid crystal material should occur, avoid contact with this material, particularly ingestion. If the body or clothing becomes contaminated by the liquid crystal material, wash thoroughly with water and soap

6.5 Storage Precautions

>>Return to CONTENTS

When storing the DISPLAY modules, avoid exposure to direct sunlight or to the light of fluorescent lamps. Keep EastRising modules in bags (avoid high temperature / high humidity and low temperatures below 0C. Whenever possible, EastRising DISPLAY modules should be stored in the same conditions in which they were shipped from our company.

6.6 Others

>>Return to CONTENTS

Liquid crystals solidify under low temperature (below the storage temperature range) leading to defective orientation or the generation of air bubbles (black or white). Air bubbles may also be generated if the module

is subject to a low temperature.

If EastRising DISPLAY modules have been operating for a long time showing the same display patterns, the display patterns may remain on the screen as ghost images and a slight contrast irregularity may also appear. A normal operating status can be regained by suspending use for some time. It should be noted that this phenomenon does not adversely affect performance reliability.

To minimize the performance degradation of the DISPLAY modules resulting from destruction caused by static electricity etc., exercise care to avoid holding the following sections when handling the modules.

- Exposed area of the printed circuit board.
- Terminal electrode sections.

7. USING DISPLAY MODULES

7.1 Liquid Crystal Display Modules

>>Return to CONTENTS

EastRising DISPLAY is composed of glass and polarizer. Pay attention to the following items when handling.

- ◆ Please keep the temperature within specified range for use and storage. Polarization degradation, bubble generation or polarizer peel-off may occur with high temperature and high humidity.
- ◆ Do not touch, push or rub the exposed polarizers with anything harder than an HB pencil lead (glass, tweezers, etc.).
- ◆ N-hexane is recommended for cleaning the adhesives used to attach front/rear polarizers and reflectors made of organic substances which will be damaged by chemicals such as acetone, toluene, ethanol and isopropylalcohol.
- ◆ When EastRising display surface becomes dusty, wipe gently with absorbent cotton or other soft material like chamois soaked in petroleum benzin. Do not scrub hard to avoid damaging the display surface.
- ◆ Wipe off saliva or water drops immediately, contact with water over a long period of time may cause deformation or color fading.
- ◆ Avoid contacting oil and fats.
- ◆ Condensation on the surface and contact with terminals due to cold will damage, stain or dirty the polarizers. After products are tested at low temperature they must be warmed up in a container before coming in contact with room temperature air.
- ◆ Do not put or attach anything on EastRising display area to avoid leaving marks on.
- ◆ Do not touch the display with bare hands. This will stain the display area and degrade insulation between terminals (some cosmetics are determined to the polarizers).
- ◆ As glass is fragile. It tends to become or chipped during handling especially on the edges. Please avoid dropping or jarring.

7.2 Installing DISPLAY Modules

>>Return to

CONTENTS

- ◆ Cover the surface with a transparent protective plate to protect the polarizer and LC cell.
- ◆ When assembling the LCM into other equipment, the spacer to the bit between the LCM and the fitting plate should have enough height to avoid causing stress to the module surface, refer to the individual

specifications for measurements. The measurement tolerance should be $\pm 0.1\text{mm}$.

7.3 Precaution for Handling DISPLAY Modules

[>>Return to](#)

CONTENTS

Since EastRising LCM has been assembled and adjusted with a high degree of precision; avoid applying excessive shocks to the module or making any alterations or modifications to it.

- ◆ Do not alter, modify or change the shape of the tab on the metal frame.
- ◆ Do not make extra holes on the printed circuit board, modify its shape or change the positions of components to be attached.
- ◆ Do not damage or modify the pattern writing on the printed circuit board.
- ◆ Absolutely do not modify the zebra rubber strip (conductive rubber) or heat seal connector.
- ◆ Except for soldering the interface, do not make any alterations or modifications with a soldering iron.
- ◆ Do not drop, bend or twist EastRising LCM.

7.4 Electro-Static Discharge Control

[>>Return to CONTENTS](#)

Since this module uses a CMOS LSI, the same careful attention should be paid to electrostatic discharge as for an ordinary CMOS IC.

- ◆ Make certain that you are grounded when handing LCM.
- ◆ Before remove LCM from its packing case or incorporating it into a set, be sure the module and your body have the same electric potential.
- ◆ When soldering the terminal of LCM, make certain the AC power source for the soldering iron does not leak.
- ◆ When using an electric screwdriver to attach LCM, the screwdriver should be of ground potentiality to minimize as much as possible any transmission of electromagnetic waves produced sparks coming from the commutator of the motor.
- ◆ As far as possible make the electric potential of your work clothes and that of the work bench the ground potential.
- ◆ To reduce the generation of static electricity be careful that the air in the work is not too dried. A relative humidity of 50%-60% is recommended.

7.5 Precaution for Soldering to EastRising LCM

[>>Return to CONTENTS](#)

- ◆ Observe the following when soldering lead wire, connector cable and etc. to the LCM.

-Soldering iron temperature : $280^{\circ}\text{C} \pm 10^{\circ}\text{C}$

-Soldering time: 3-4 sec.

-Solder: eutectic solder.

If soldering flux is used, be sure to remove any remaining flux after finishing to soldering operation. (This does not apply in the case of a non-halogen type of flux.) It is recommended that you protect the DISPLAY surface with a cover during soldering to prevent any damage due to flux spatters.

- ◆ When soldering the electroluminescent panel and PC board, the panel and board should not be detached more than three times. This maximum number is determined by the temperature and time conditions mentioned above, though there may be some variance depending on the temperature of the soldering iron.
- ◆ When remove the electroluminescent panel from the PC board, be sure the solder has completely melted,

the soldered pad on the PC board could be damaged.

7.6 Precaution for Operation

>>Return to CONTENTS

- ◆ Viewing angle varies with the change of liquid crystal driving voltage (VO). Adjust VO to show the best contrast.
- ◆ Driving the EastRising DISPLAY in the voltage above the limit shortens its life.
- ◆ Response time is greatly delayed at temperature below the operating temperature range. However, this does not mean the DISPLAY will be out of the order. It will recover when it returns to the specified temperature range.
- ◆ If EastRising display area is pushed hard during operation, the display will become abnormal. However, it will return to normal if it is turned off and then back on.
- ◆ Condensation on terminals can cause an electrochemical reaction disrupting the terminal circuit. Therefore, it must be used under the relative condition of 40℃, 50% RH.
- ◆ When turning the power on, input each signal after the positive/negative voltage becomes stable.

7.7 Limited Warranty

>>Return to CONTENTS

Unless agreed between EastRising and customer, EastRising will replace or repair any of its DISPLAY modules which are found to be functionally defective when inspected in accordance with EastRising DISPLAY acceptance standards (copies available upon request) for a period of one year from date of shipments. Cosmetic/visual defects must be returned to EastRising within 90 days of shipment. Confirmation of such date shall be based on freight documents. The warranty liability of EastRising limited to repair and/or replacement on the terms set forth above. EastRising will not be responsible for any subsequent or consequential events.

7.7 Return Policy

>>Return to CONTENTS

No warranty can be granted if the precautions stated above have been disregarded. The typical examples of violations are:

- Broken DISPLAY glass.
- PCB eyelet damaged or modified.
- PCB conductors damaged.
- Circuit modified in any way, including addition of components.
- PCB tampered with by grinding, engraving or painting varnish.
- Soldering to or modifying the bezel in any manner.

Module repairs will be invoiced to the customer upon mutual agreement. Modules must be returned with sufficient description of the failures or defects. Any connectors or cable installed by the customer must be removed completely without damaging the PCB eyelet's, conductors and terminals

That's the end of the Manual

>>Return to CONTENTS